

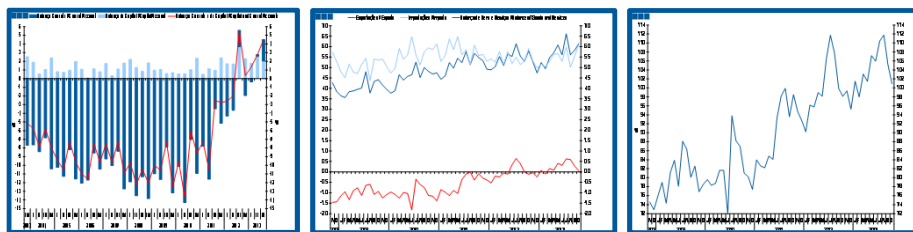
# Estatísticas Temáticas de Conjuntura

## *Short-term Thematic Statistics*

- Nº 12/2013 -

19 de dezembro de 2013

*December, 19, 2013*



## Balanças Corrente e de Capital *Current and Capital Accounts*

- Outubro de 2013 -

*- October, 2013 -*

Fonte / *Source*: Banco de Portugal

Nota: PIB ajustado de sazonalidade. Fonte: Instituto Nacional de Estatística.

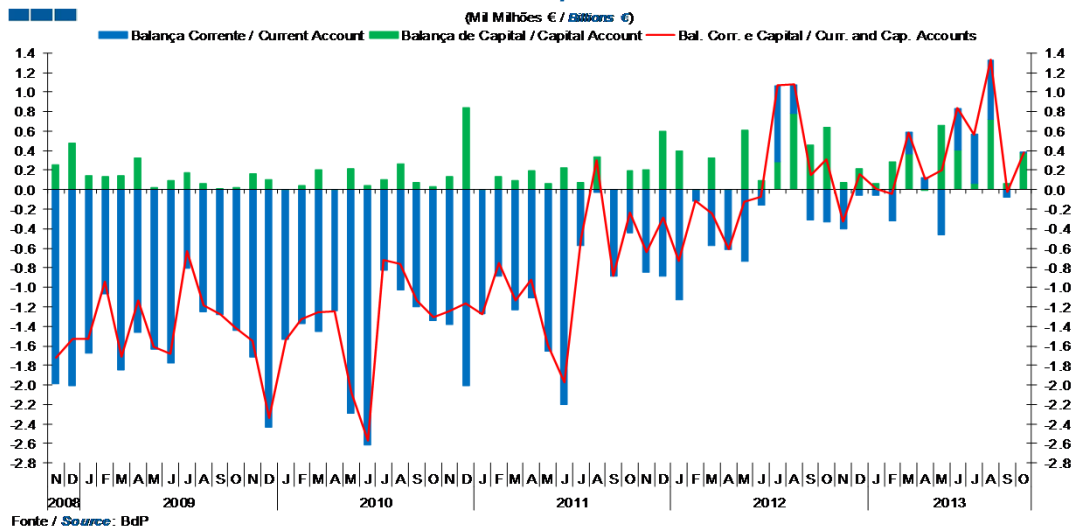
*Note: Seasonally adjusted GDP. Source: Statistics Portugal.*

## Índice / *Index*

	Página / <i>Page</i>
<b>1. Balanças Corrente e de Capital / <i>Capital and Current Accounts</i></b>	
Balanças Corrente e de Capital / <i>Current and Capital Accounts</i>	3
<b>2. Balança Corrente / <i>Current Account</i></b>	
Bens e Serviços, Rendimentos, Transferências Correntes / <i>Goods and Services, Income, Current Transfers</i>	4
<b>3. Balanças de Bens e Serviços / <i>Goods and Services Accounts</i></b>	
Exportações e Importações / <i>Exports and Imports</i>	5-6
Bens e Serviços / <i>Goods and Services</i>	7
<b>4. Balança de Bens / <i>Goods Account</i></b>	
Exportações e Importações / <i>Exports and Imports</i>	8
Variação Homóloga / <i>Annual Change</i>	9
Taxa de Cobertura / <i>Coverage Rate</i>	9
<b>5. Balança de Serviços / <i>Services Account</i></b>	
Exportações e Importações / <i>Exports and Imports</i>	10
Variação Homóloga / <i>Annual Change</i>	11
Taxa de Cobertura / <i>Coverage Rate</i>	11
Variação Homóloga das Exportações / <i>Exports Annual Change</i>	12
Variação Homóloga das Importações / <i>Imports Annual Change</i>	12
Taxa de Cobertura / <i>Coverage Rate</i>	13
Saldo / <i>Balance</i>	13
<b>6. Balança de Rendimentos / <i>Income Account</i></b>	
Juros, Dividendos, Lucros Reinvestidos, Rend. do Trabalho e Outros / <i>Interest, Dividends, Reinvested Earnings, Compensation of Employees and Others</i>	14

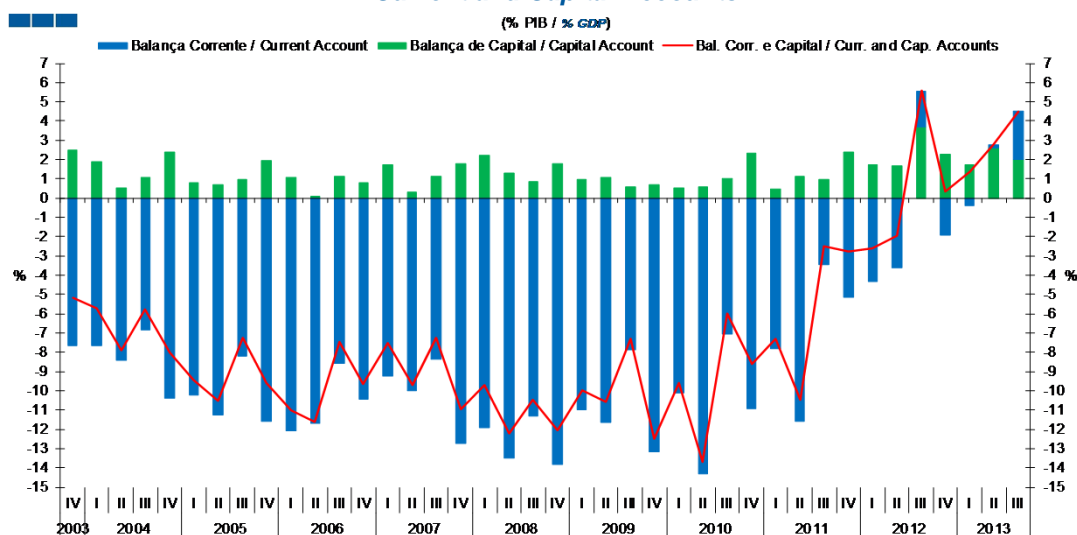
## 1. Balanças Corrente e de Capital / Capital and Current Accounts

Gráfico / Graph 1.1.  
 Balanças Corrente e de Capital  
 Current and Capital Accounts



	2011				2012				2013															
	N	D	J	F	M	A	M	J	J	A	S	O	N	D	J	F	M	A	M	J	J	A	S	O
Balança Corrente / Current Account	-0.8	-0.9	-1.1	-0.1	-0.6	-0.6	-0.7	-0.2	0.8	0.3	-0.3	-0.3	-0.4	-0.1	-0.1	-0.3	0.2	0.1	-0.5	0.4	0.5	0.6	-0.1	0.0
Balança de Capital / Capital Account	0.2	0.6	0.4	0.0	0.3	0.0	0.6	0.1	0.3	0.8	0.5	0.6	0.1	0.2	0.1	0.3	0.4	0.0	0.7	0.4	0.1	0.7	0.1	0.4
Bal. Corr. e Cap. / Curr. and Cap. Accounts	-0.6	-0.3	-0.7	-0.1	-0.2	-0.6	-0.1	-0.1	1.1	1.1	0.1	0.3	-0.3	0.2	0.0	0.0	0.6	0.1	0.2	0.8	0.6	1.3	0.0	0.4

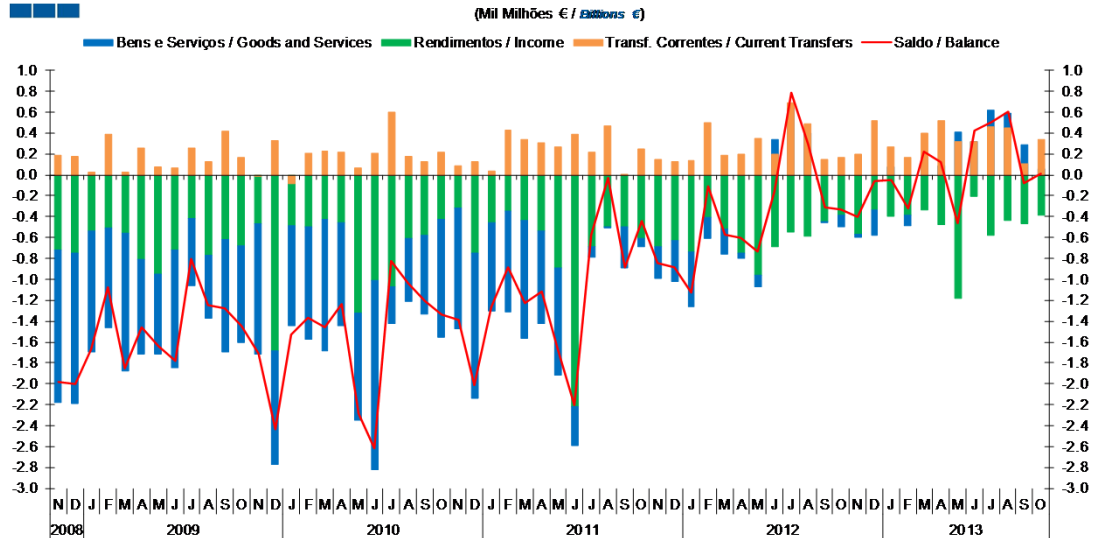
Gráfico / Graph 1.2.  
 Balanças Corrente e de Capital  
 Current and Capital Accounts



	2008		2009				2010				2011				2012				2013		
	IV	I	II	III	IV	I	II	III	IV	I	II	III	IV	I	II	III	IV	I	II	III	
Balança Corrente / Current Account	-13.8	-11.0	-11.6	-7.9	-13.2	-10.1	-14.3	-7.0	-10.9	-7.8	-11.6	-3.5	-5.2	-4.3	-3.6	1.9	-1.9	-0.4	0.2	2.5	
Balança de Capital / Capital Account	1.8	1.0	1.1	0.6	0.7	0.5	0.6	1.0	2.3	0.5	1.1	0.9	2.4	1.7	1.7	3.7	2.3	1.8	2.6	2.0	
Bal. Corr. e Cap. / Curr. and Cap. Accounts	-12.0	-10.0	-10.6	-7.3	-12.5	-9.6	-13.7	-6.0	-8.6	-7.3	-10.5	-2.5	-2.7	-2.6	-2.0	5.6	0.3	1.4	2.8	4.5	

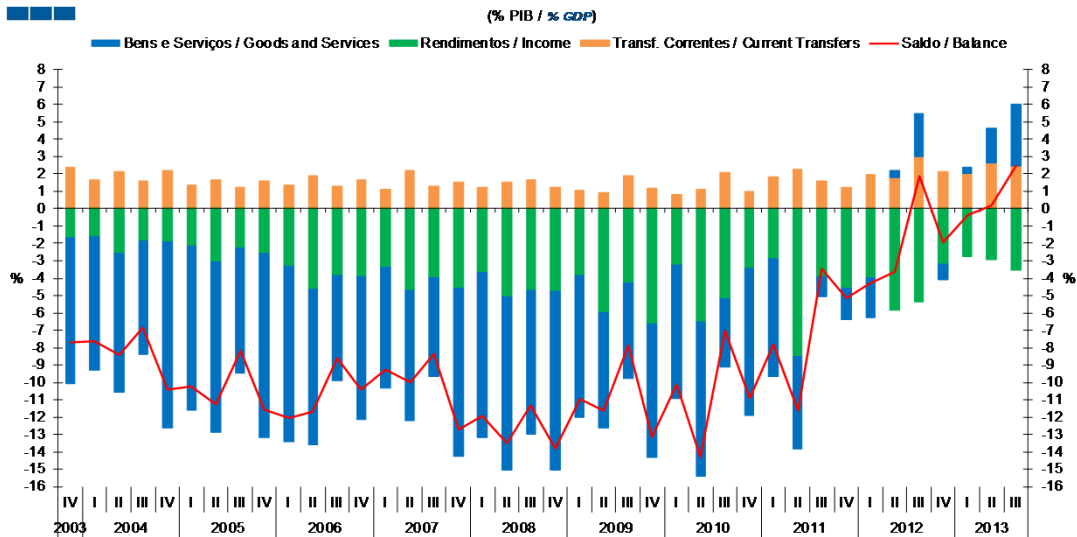
## 2. Balança Corrente / Current Account

Gráfico / Graph 2.1.  
**Bens e Serviços, Rendimentos, Transferências Correntes**  
**Goods and Services, Income, Current Transfers**



	2011				2012				2010				2011				2012				2013				
	N	D	J	F	M	A	M	J	J	A	S	O	N	D	J	F	M	A	M	J	J	A	S	O	
Bens e Serviços / Goods and Services	-0.3	-0.4	-0.5	-0.2	-0.2	-0.1	-0.1	0.3	0.6	0.4	0.0	-0.1	0.0	-0.2	0.1	-0.1	0.2	0.1	0.4	0.3	0.6	0.6	0.3	0.1	
Rendimentos / Income	-0.7	-0.6	-0.7	-0.4	-0.5	-0.7	-1.0	-0.7	-0.5	-0.6	-0.4	-0.4	-0.6	-0.3	-0.4	-0.4	-0.3	-0.5	-1.2	-0.2	-0.6	-0.4	-0.5	-0.4	
Transf. Correntes / Current Transfers	0.1	0.1	0.1	0.5	0.2	0.2	0.3	0.2	0.7	0.5	0.1	0.2	0.2	0.5	0.3	0.2	0.4	0.5	0.3	0.3	0.5	0.5	0.1	0.3	
Saldo / Balance	-0.8	-0.9	-1.1	-0.1	-0.6	-0.6	-0.7	-0.2	0.8	0.3	-0.3	-0.3	-0.4	-0.1	-0.1	-0.3	0.2	0.1	-0.5	0.4	0.5	0.6	-0.1	0.0	

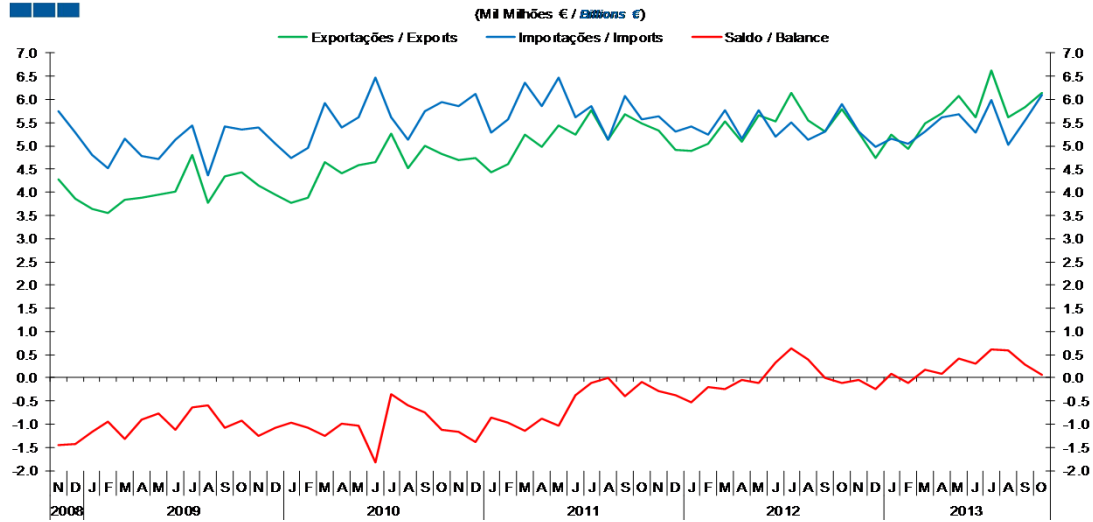
Gráfico / Graph 2.2.  
**Bens e Serviços, Rendimentos, Transferências Correntes**  
**Goods and Services, Income, Current Transfers**



	2008				2009				2010				2011				2012				2013			
	IV	I	II	III	IV	I	II	III	IV	I	II	III	IV	I	II	III	IV	I	II	III	I	II	III	
Bens e Serviços / Goods and Services	-9.7	-9.5	-10.0	-8.3	-10.3	-8.2	-6.7	-5.5	-7.7	-7.7	-8.9	-3.9	-8.5	-6.8	-5.4	-1.2	-1.8	-2.3	0.4	2.5	-0.9	0.3	2.0	3.6
Rendimentos / Income	-4.6	-3.6	-5.1	-4.7	-4.8	-3.8	-5.9	-4.3	-6.6	-3.3	-6.5	-5.2	-3.5	-2.9	-8.5	-3.9	-4.6	-3.9	-5.8	-5.4	-3.2	-2.7	-3.0	-3.6
Transf. Correntes / Current Transfers	1.5	1.3	1.6	1.7	1.2	1.1	1.0	1.9	1.2	0.8	1.1	2.1	1.0	1.9	2.2	1.6	1.3	1.9	1.8	3.0	2.2	2.0	2.7	2.4
Saldo / Balance	-12.7	-11.9	-13.5	-11.3	-13.8	-11.0	-11.6	-7.9	-13.2	-10.1	-14.3	-7.0	-10.9	-7.8	-11.6	-3.5	-5.2	-4.3	-3.6	1.9	-1.9	-0.4	0.2	2.5

### 3. Balanços de Bens e Serviços / Goods and Services Accounts

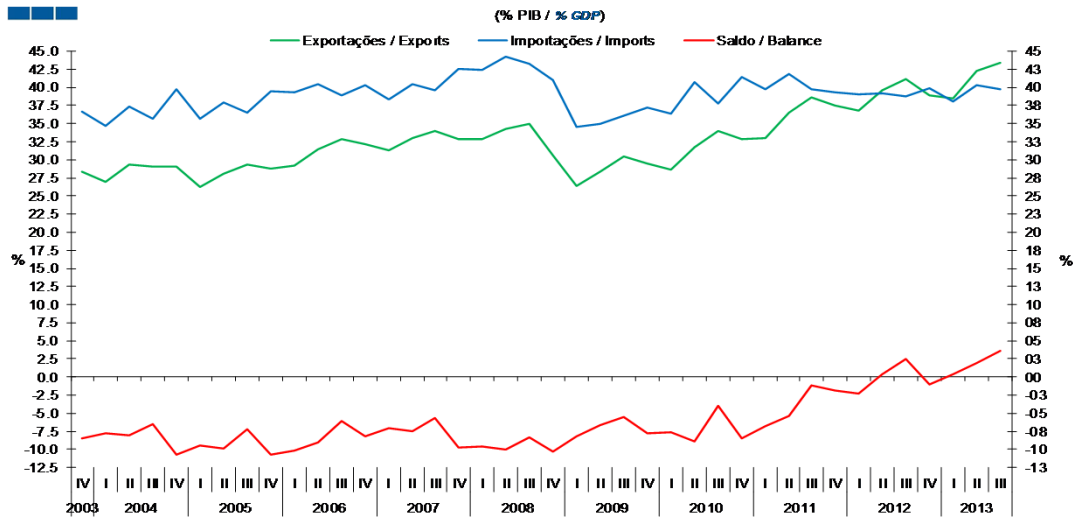
Gráfico / Graph 3.1.  
 Exportações e Importações  
 Exports and Imports



Fonte / Source: BdP

	2011				2012					2013														
	N	D	J	F	M	A	M	J	J	A	S	O	N	D	J	F	M	A	M	J	J	A	S	O
Exportações / Exports	5.3	4.9	4.9	5.0	5.5	5.1	5.7	5.5	6.1	5.5	5.3	5.8	5.3	4.7	5.2	4.9	5.5	5.7	6.1	5.6	6.6	5.6	5.8	6.1
Importações / Imports	5.6	5.3	5.4	5.2	5.8	5.2	5.8	5.2	5.5	5.1	5.3	5.9	5.3	5.0	5.2	5.0	5.3	5.6	5.7	5.3	6.0	5.0	5.5	6.1
Saldo / Balance	-0.3	-0.4	-0.5	-0.2	-0.2	-0.1	-0.1	0.3	0.6	0.4	0.0	-0.1	0.0	-0.2	0.1	-0.1	0.2	0.1	0.4	0.3	0.6	0.6	0.3	0.1

Gráfico / Graph 3.2.  
 Exportações e Importações  
 Exports and Imports

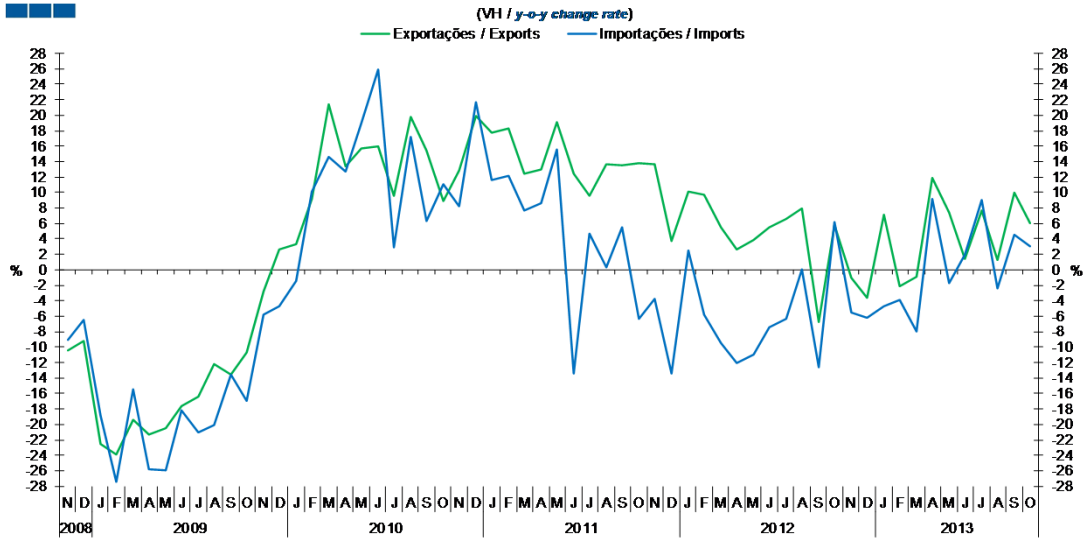


Fonte / Source: BdP

	2008				2009				2010				2011				2012				2013			
	IV	I	II	III	IV	I	II	III	IV	I	II	III	IV	I	II	III	IV	I	II	III	IV	I	II	III
Exportações / Exports	32.9	32.9	34.3	34.9	30.7	26.4	28.3	30.5	29.5	28.6	31.7	33.9	32.9	33.0	36.5	38.6	37.4	36.7	39.6	41.2	38.9	38.4	42.3	43.3
Importações / Imports	42.6	42.4	44.3	43.2	40.9	34.6	34.9	36.0	37.2	36.3	40.7	37.8	41.4	39.8	41.9	39.8	39.3	39.0	39.1	38.7	39.9	38.1	40.4	39.7
Saldo / Balance	-9.7	-9.5	-10.0	-8.3	-10.3	-8.2	-6.7	-5.5	-7.7	-7.7	-8.9	-3.9	-8.5	-6.8	-5.4	-1.2	-1.8	-2.3	0.4	2.5	-0.9	0.3	2.0	3.6

### 3. Balanças de Bens e Serviços / Goods and Services Accounts

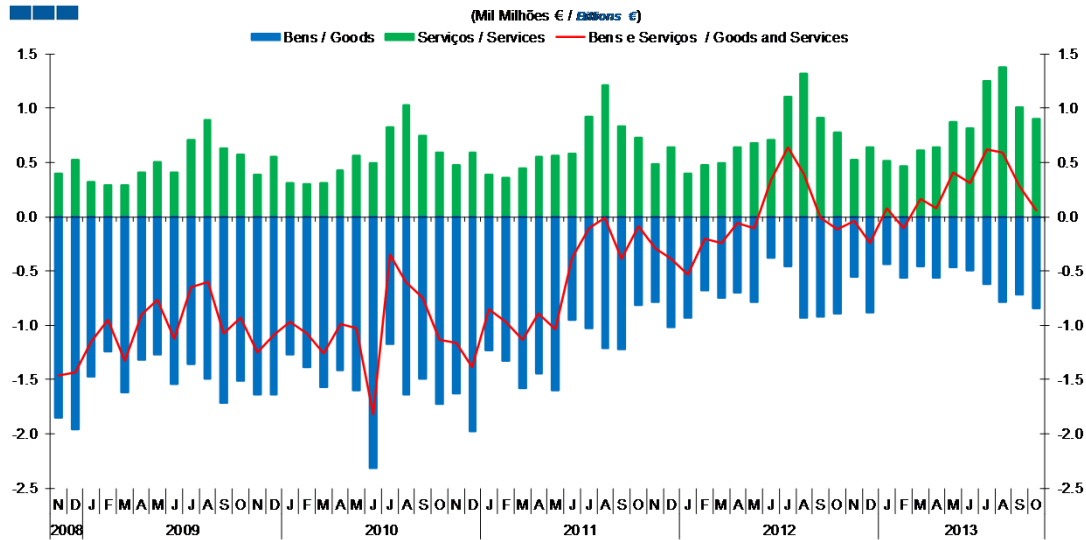
Gráfico / Graph 3.3.  
Exportações e Importações  
Exports and Imports



	2011		2012					2013																
	N	D	J	F	M	A	M	J	J	A	S	O	N	D	J	F	M	A	M	J	J	A	S	O
Exportações / Exports	13.7	3.7	10.1	9.7	5.5	2.6	3.9	5.5	6.6	7.9	-6.7	5.8	-1.0	-3.7	7.2	-2.1	-0.9	11.9	7.4	1.5	7.7	1.2	10.0	6.0
Importações / Imports	-3.8	-13.4	2.5	-5.8	-9.4	-12.0	-11.0	-7.5	-6.3	0.1	-12.6	6.2	-5.6	-6.2	-4.7	-3.9	-8.0	9.1	-1.7	2.0	9.0	-2.4	4.5	3.1

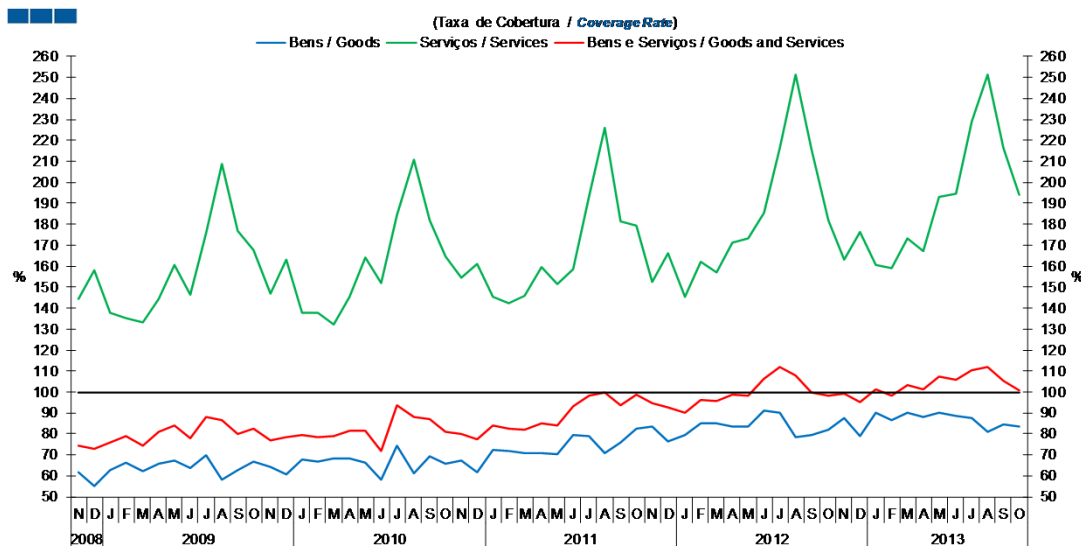
### 3. Balanças de Bens e Serviços / Goods and Services Accounts

Gráfico / Graph 3.4.  
 Bens e Serviços  
 Goods and Services



	2011		2012					2010					2011					2012					2013				
	N	D	J	F	M	A	M	J	J	A	S	O	N	D	J	F	M	A	M	J	J	A	S	O			
<b>Serviços / Services</b>	0.5	0.6	0.4	0.5	0.5	0.6	0.7	0.7	1.1	1.3	0.9	0.8	0.5	0.6	0.5	0.5	0.6	0.6	0.9	0.8	1.2	1.4	1.0	0.9			
<b>Bens / Goods</b>	-0.8	-1.0	-0.9	-0.7	-0.7	-0.7	-0.8	-0.4	-0.5	-0.9	-0.9	-0.9	-0.6	-0.9	-0.4	-0.6	-0.5	-0.6	-0.5	-0.5	-0.6	-0.8	-0.7	-0.8			
<b>Bens e Serviços / Goods and Services</b>	-0.3	-0.4	-0.5	-0.2	-0.2	-0.1	-0.1	0.3	0.6	0.4	0.0	-0.1	0.0	-0.2	0.1	-0.1	0.2	0.1	0.4	0.3	0.6	0.6	0.3	0.1			

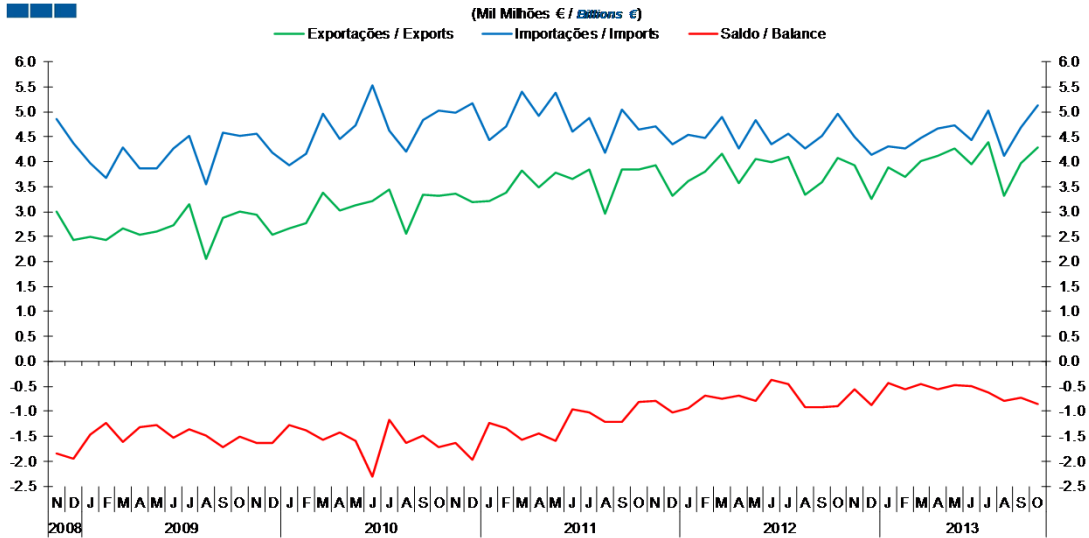
Gráfico / Graph 3.5.  
 Bens e Serviços  
 Goods and Services



	2011		2012					2010					2011					2012					2013				
	N	D	J	F	M	A	M	J	J	A	S	O	N	D	J	F	M	A	M	J	J	A	S	O			
<b>Serviços / Services</b>	152.4	166.2	145.6	162.1	156.8	171.3	173.2	185.6	216.4	251.2	215.8	181.7	163.0	176.4	160.7	159.1	173.3	167.2	193.1	194.8	229.0	251.2	216.5	194.1			
<b>Bens / Goods</b>	83.4	76.5	79.5	84.8	84.8	83.7	83.7	91.4	89.9	78.3	79.6	82.1	87.6	78.8	89.9	86.8	89.9	88.0	90.1	88.8	87.6	81.0	84.6	83.6			
<b>Bens e Serviços / Goods and Services</b>	94.8	92.8	90.2	96.2	95.8	99.0	98.1	106.5	111.7	107.7	99.9	98.1	99.3	95.2	101.5	98.0	103.1	101.5	107.2	105.9	110.4	111.8	105.1	100.9			

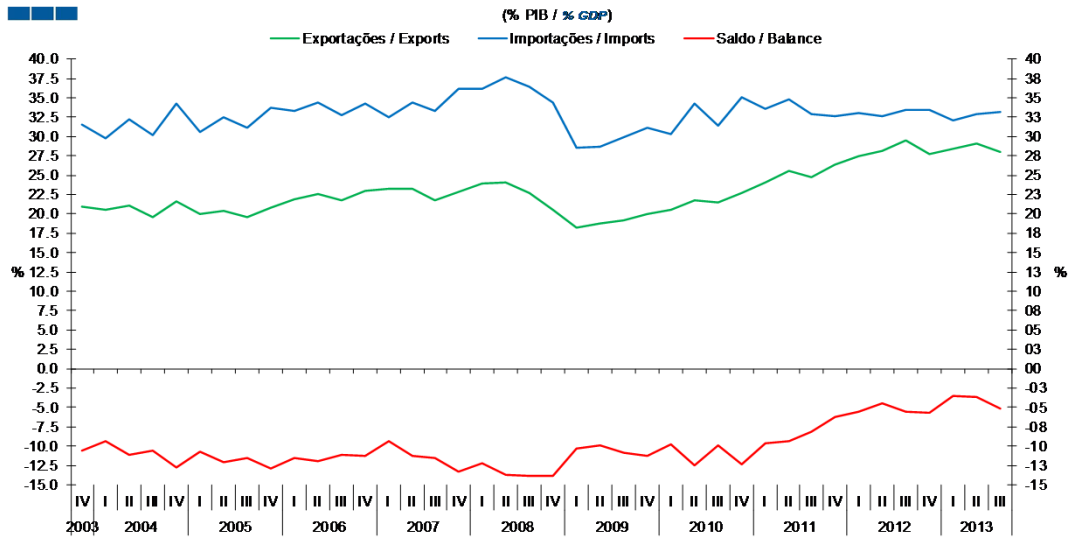
#### 4. Balança de Bens / Goods Account

Gráfico / Graph 4.1.  
 Exportações e Importações  
 Exports and Imports



	2011		2012			2010					2011					2012					2013				
	N	D	J	F	M	A	M	J	J	A	S	O	N	D	J	F	M	A	M	J	J	A	S	O	
Exportações / Exports	3.9	3.3	3.6	3.8	4.2	3.6	4.0	4.0	4.1	3.3	3.6	4.1	3.9	3.3	3.9	3.7	4.0	4.1	4.3	3.9	4.4	3.3	4.0	4.3	
Importações / Imports	4.7	4.3	4.5	4.5	4.9	4.3	4.8	4.4	4.5	4.3	4.5	5.0	4.5	4.1	4.3	4.3	4.5	4.7	4.7	4.4	5.0	4.1	4.7	5.1	
Saldo / Balance	-0.8	-1.0	-0.9	-0.7	-0.7	-0.7	-0.8	-0.4	-0.5	-0.9	-0.9	-0.9	-0.6	-0.9	-0.4	-0.6	-0.5	-0.6	-0.5	-0.5	-0.6	-0.8	-0.7	-0.8	

Gráfico / Graph 4.2.  
 Exportações e Importações  
 Exports and Imports



	2008				2009				2010				2011				2012				2013			
	IV	I	II	III	IV	I	II	III	IV	I	II	III	IV	I	II	III	IV	I	II	III	IV			
Exportações / Exports	22.8	23.9	24.1	22.6	20.5	18.2	18.8	19.1	19.9	20.5	21.8	21.5	22.8	24.1	25.5	24.8	26.4	27.4	28.2	29.5	27.7	28.5	29.0	28.1
Importações / Imports	36.2	36.2	37.7	36.4	34.3	28.5	28.6	29.9	31.2	30.3	34.2	31.4	35.1	33.6	34.8	32.9	32.6	33.0	32.7	33.4	33.4	32.0	32.9	33.2
Saldo / Balance	-13.3	-12.2	-13.6	-13.8	-13.8	-10.3	-9.8	-10.8	-11.3	-9.8	-12.4	-9.9	-12.3	-9.6	-9.3	-8.1	-6.2	-5.6	-4.5	-5.6	-5.7	-3.6	-3.7	-5.1

#### 4. Balança de Bens / Goods Account

Gráfico / Graph 4.3.  
 Variação Homóloga  
 Annual Change

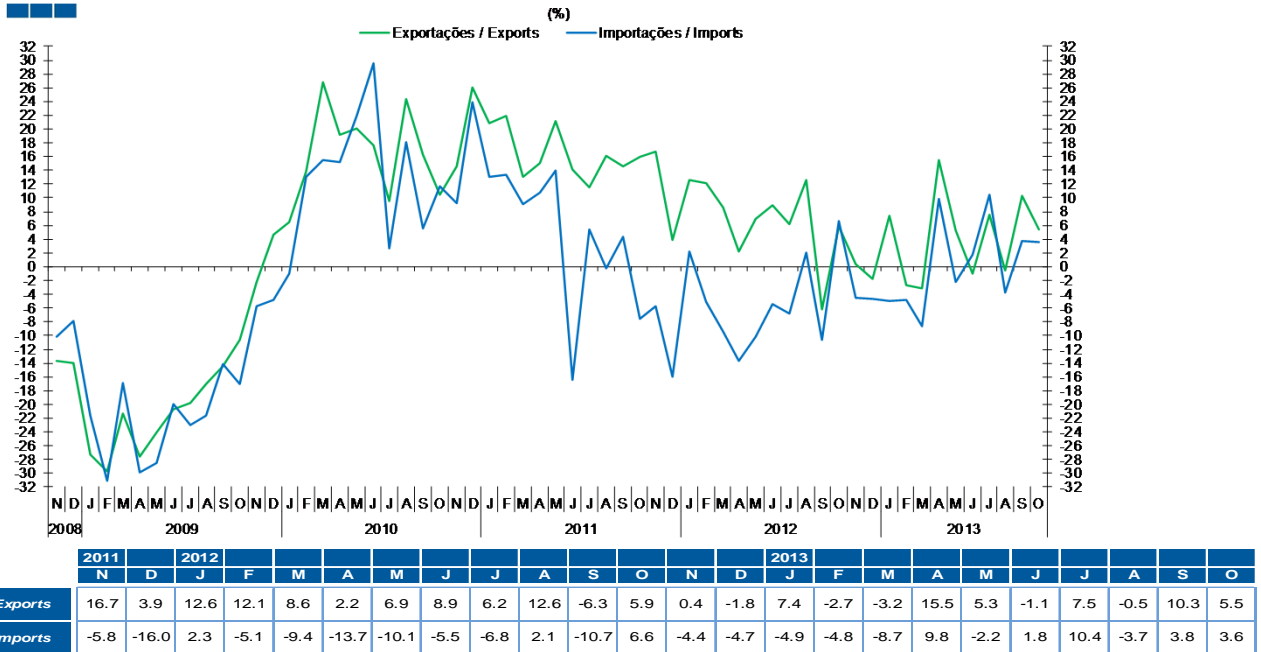
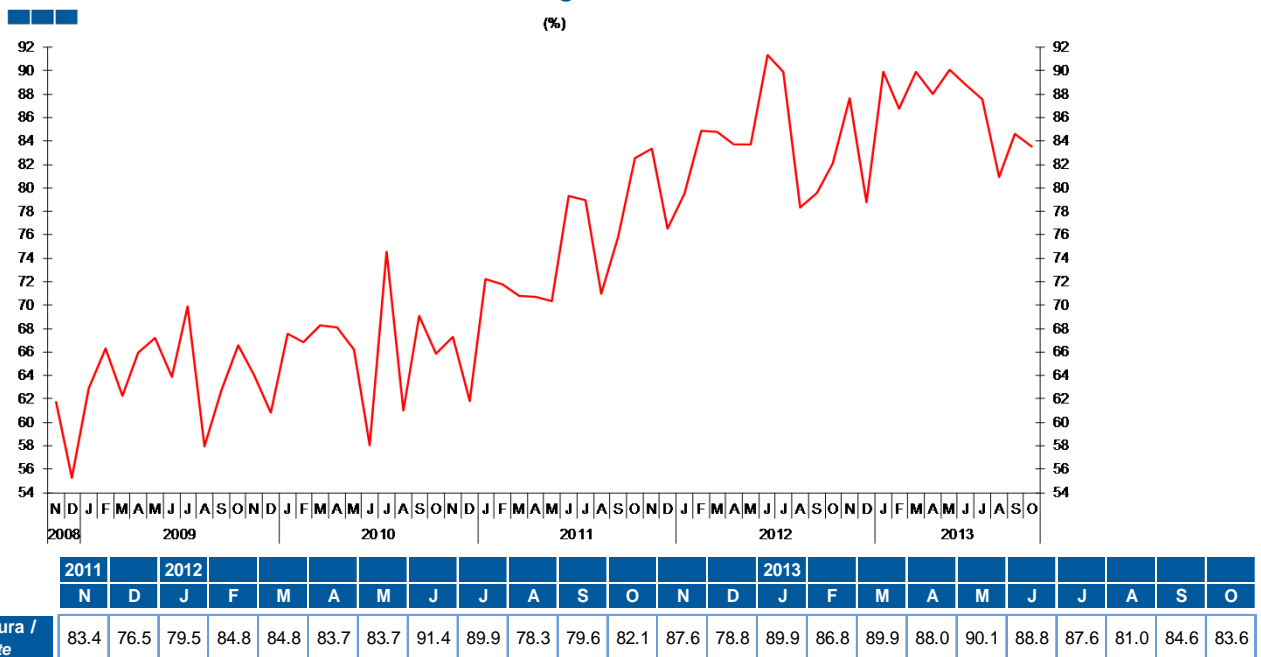
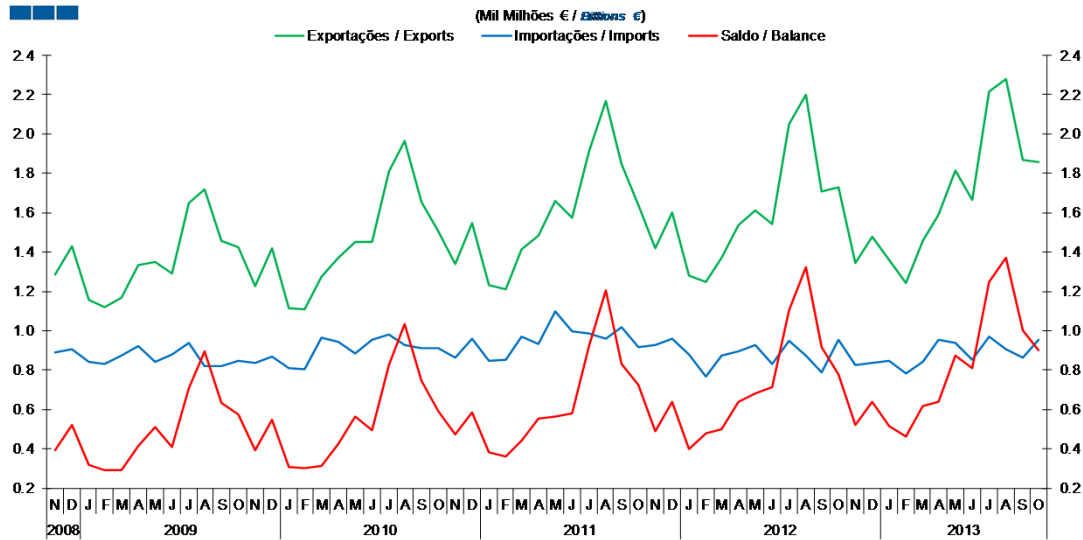


Gráfico / Graph 4.4.  
 Taxa de Cobertura  
 Coverage Rate



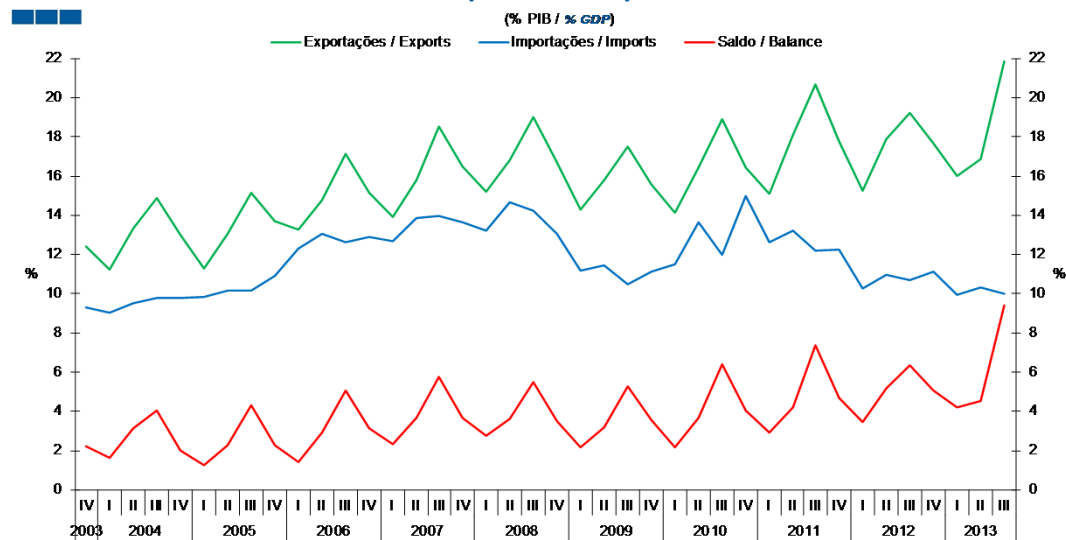
## 5. Balança de Serviços / Services Account

Gráfico / Graph 5.1.  
 Exportações e Importações  
 Exports and Imports



	2011					2012					2013													
	N	D	J	F	M	A	M	J	J	A	S	O	N	D	J	F	M	A	M	J	J	A	S	O
Exportações / Exports	1.4	1.6	1.3	1.2	1.4	1.5	1.6	1.5	2.1	2.2	1.7	1.7	1.3	1.5	1.4	1.2	1.5	1.6	1.8	1.7	2.2	2.3	1.9	1.9
Importações / Imports	0.9	1.0	0.9	0.8	0.9	0.9	0.9	0.8	0.9	0.9	0.8	1.0	0.8	0.8	0.8	0.8	0.8	1.0	0.9	0.9	1.0	0.9	0.9	1.0
Saldo / Balance	0.5	0.6	0.4	0.5	0.5	0.6	0.7	0.7	1.1	1.3	0.9	0.8	0.5	0.6	0.5	0.5	0.6	0.6	0.9	0.8	1.2	1.4	1.0	0.9

Gráfico / Graph 5.2.  
 Exportações e Importações  
 Exports and Imports



	2008				2009				2010				2011				2012				2013			
	IV	I	II	III	IV	I	II	III	IV	I	II	III	IV	I	II	III	IV	I	II	III	IV	I	II	III
Exportações / Exports	16.5	15.2	16.8	19.0	16.7	14.3	15.8	17.5	15.6	14.1	16.4	18.9	16.5	15.1	18.1	20.7	17.8	15.3	17.9	19.2	17.6	16.0	16.9	21.8
Importações / Imports	13.7	13.2	14.6	14.3	13.0	11.2	11.4	10.5	11.1	11.5	13.6	12.0	15.0	12.6	13.2	12.2	12.3	10.3	11.0	10.7	11.1	9.9	10.3	10.0
Saldo / Balance	3.6	2.7	3.6	5.5	3.5	2.2	3.2	5.3	3.6	2.1	3.6	6.4	4.1	2.9	4.2	7.3	4.7	3.5	5.2	6.4	5.1	4.2	4.5	9.4

## 5. Balança de Serviços / Services Account

Gráfico / Graph 5.3.  
 Variação Homóloga  
 Annual Change

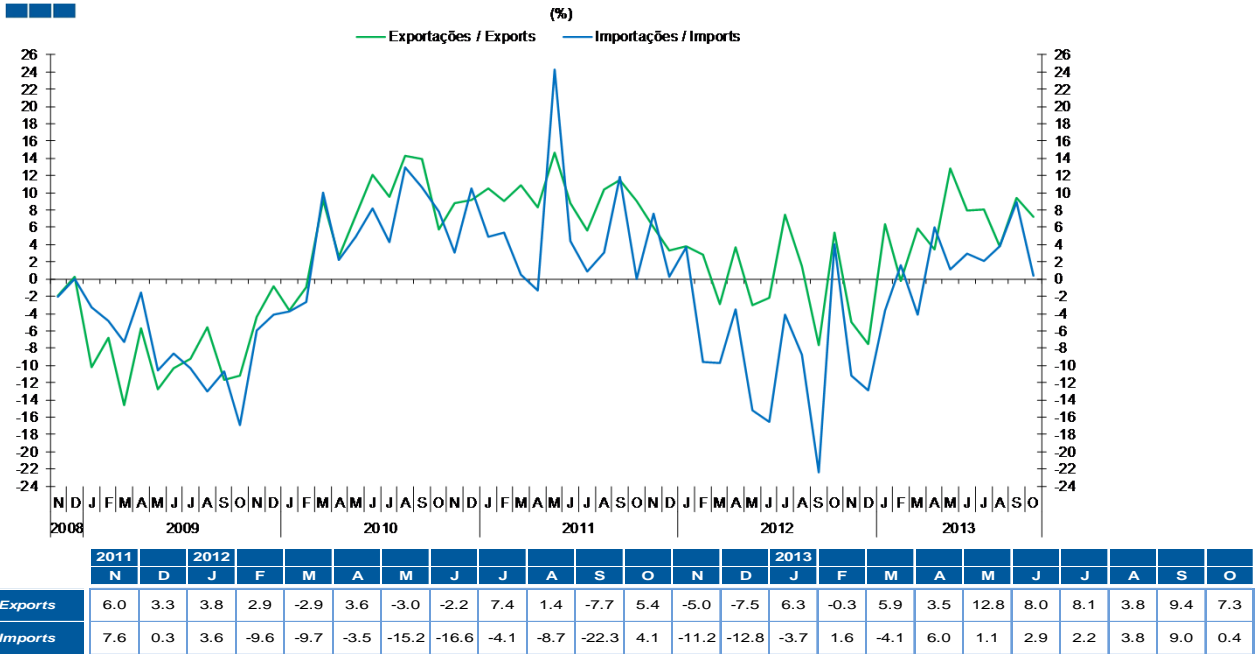
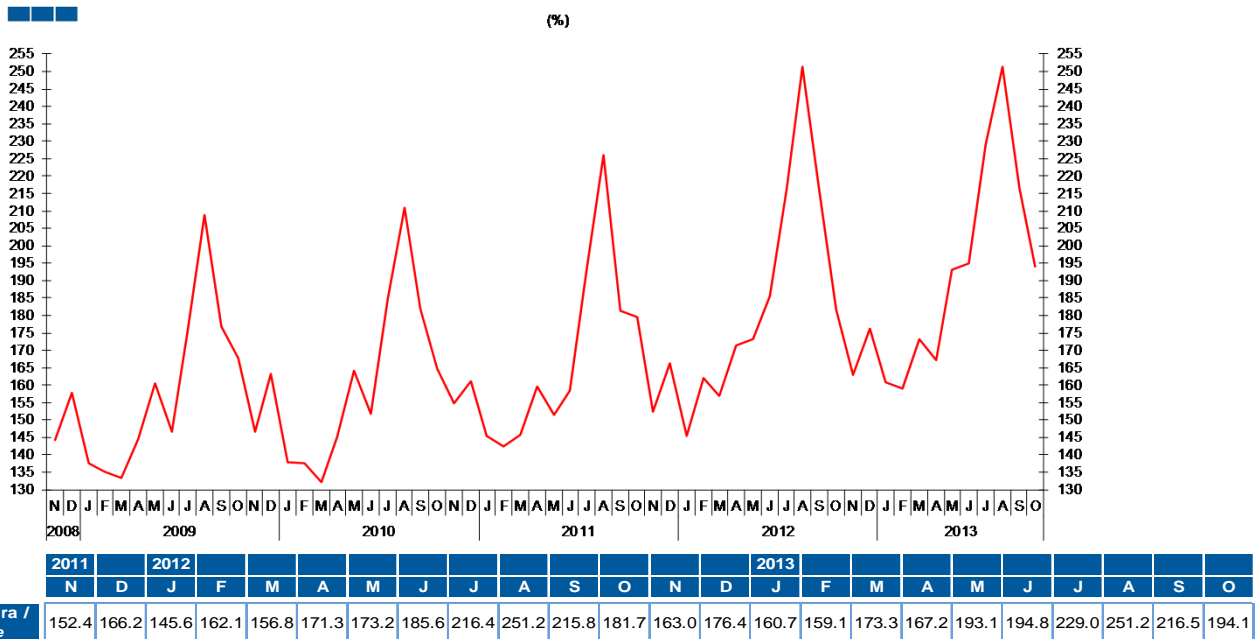
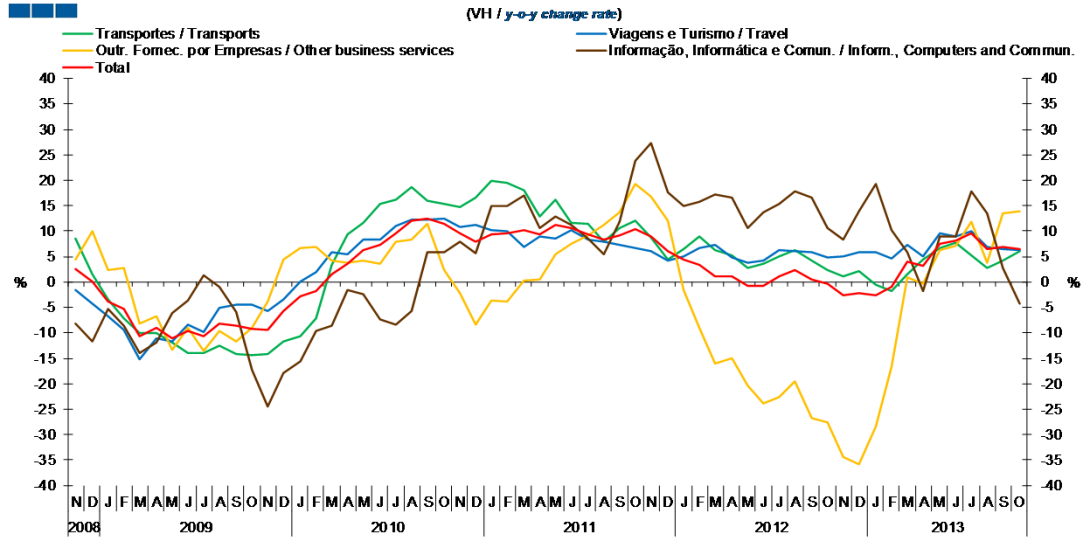


Gráfico / Graph 5.4.  
 Taxa de Cobertura  
 Coverage Rate



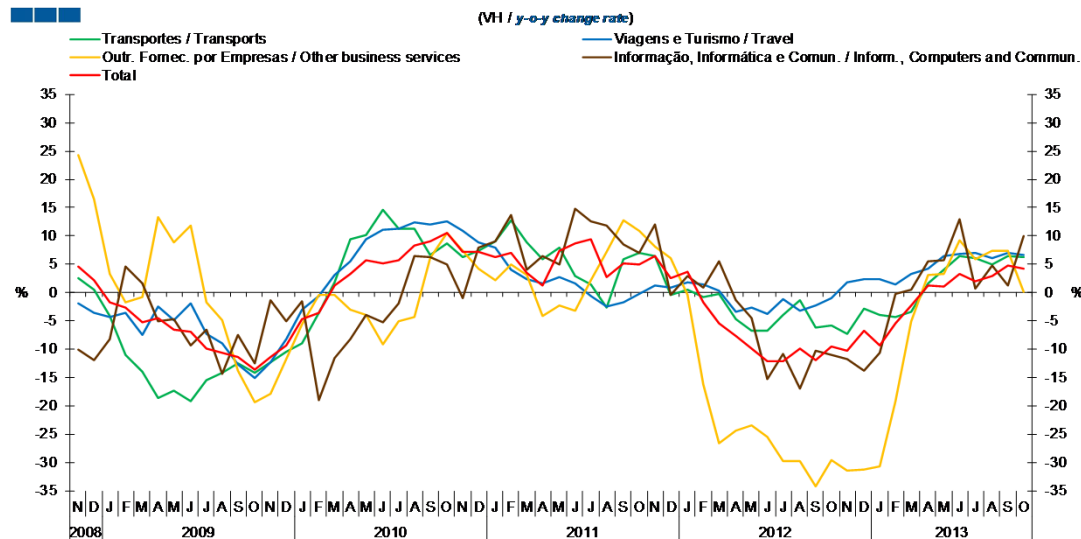
## 5. Balança de Serviços / Services Account

Gráfico / Graph 5.5.  
Variação Homóloga das Exportações  
Exports Annual Change



	2011				2012				2013															
	N	D	J	F	M	A	M	J	J	A	S	O	N	D	J	F	M	A	M	J	J	A	S	O
Transportes / Transports	8.7	4.5	6.5	8.9	6.2	5.2	2.8	3.6	4.9	6.2	4.3	2.4	1.1	2.2	-0.6	-1.7	1.5	4.5	6.7	7.7	5.3	2.7	4.1	6.1
Viagens e Turismo / Travel	6.1	4.1	5.0	6.8	7.2	4.9	3.8	4.1	6.2	6.1	5.8	4.9	5.1	5.8	6.0	4.6	7.3	5.0	9.6	8.9	10.0	6.8	6.4	6.2
Outr. Fomec. por empresas / Other business services	16.8	12.0	-1.6	-9.1	-16.1	-15.1	-20.5	-23.9	-22.7	-19.5	-26.9	-27.5	-34.5	-35.8	-28.5	-16.7	1.0	-0.3	6.3	7.1	11.8	3.8	13.5	13.9
Informação, Informática e Comun. / Infor., Computers, and Commun.	27.3	17.6	15.0	15.7	17.2	16.6	10.5	13.7	15.4	17.7	16.6	10.6	8.4	13.8	19.4	10.1	5.9	-1.7	9.0	9.0	17.9	13.4	2.7	-4.3
Total	9.0	6.1	4.3	3.3	1.1	1.2	-0.8	-0.7	1.1	2.4	0.5	-0.4	-2.5	-2.2	-2.6	-1.0	4.1	3.2	7.5	8.2	9.5	6.4	6.9	6.5

Gráfico / Graph 5.6.  
Variação Homóloga das Importações  
Imports Annual Change



	2011				2012				2013															
	N	D	J	F	M	A	M	J	J	A	S	O	N	D	J	F	M	A	M	J	J	A	S	O
Transportes / Transports	6.4	-0.3	0.5	-0.7	-0.3	-4.7	-6.7	-6.7	-4.0	-1.3	-6.1	-5.8	-7.3	-2.9	-4.0	-4.4	-3.5	1.7	4.0	6.5	6.1	5.0	6.4	6.3
Viagens e Turismo / Travel	1.3	0.8	1.7	1.4	0.4	-3.3	-2.7	-3.7	-1.2	-3.2	-2.2	-0.9	1.8	2.4	2.4	1.5	3.2	4.2	6.4	6.8	7.0	6.0	7.0	6.6
Outr. Fomec. por empresas / Other business services	8.1	6.0	-0.4	-16.2	-26.6	-24.3	-23.5	-25.5	-29.8	-29.8	-34.3	-29.7	-31.5	-31.2	-30.7	-19.1	-5.0	3.1	3.3	9.2	5.9	7.4	7.4	0.0
Informação, Informática e Comun. / Infor., Computers, and Commun.	12.0	-0.4	3.0	0.9	5.5	-1.3	-4.4	-15.2	-10.9	-16.9	-10.3	-11.0	-11.8	-13.9	-10.6	-0.2	0.4	5.5	5.6	12.9	0.6	4.8	1.2	9.9
Total	6.5	2.5	3.7	-1.8	-5.4	-7.6	-9.8	-12.1	-12.1	-9.8	-11.9	-9.5	-10.3	-6.8	-9.4	-5.5	-2.2	1.2	1.0	3.3	2.0	2.9	4.8	4.1

Nota: Não inclui as séries Construção, Financeiros, Seguros, Direitos de Utilização, Nat. Pessoal, Cult. e Recreat., Operações Gov. (Restantes Serviços), devido ao seu baixo valor relativo e elevada variabilidade.  
Note: Does not include Construction, Financial, Insurance, Royalties and Licence Fees, Personal, Cultural and Recreational Serv., Government Serv. (Remaining Services) because of its relative small value and high variability.

## 5. Balança de Serviços / Services Account

Gráfico / Graph 5.7.  
Taxa de Cobertura  
Coverage Rate

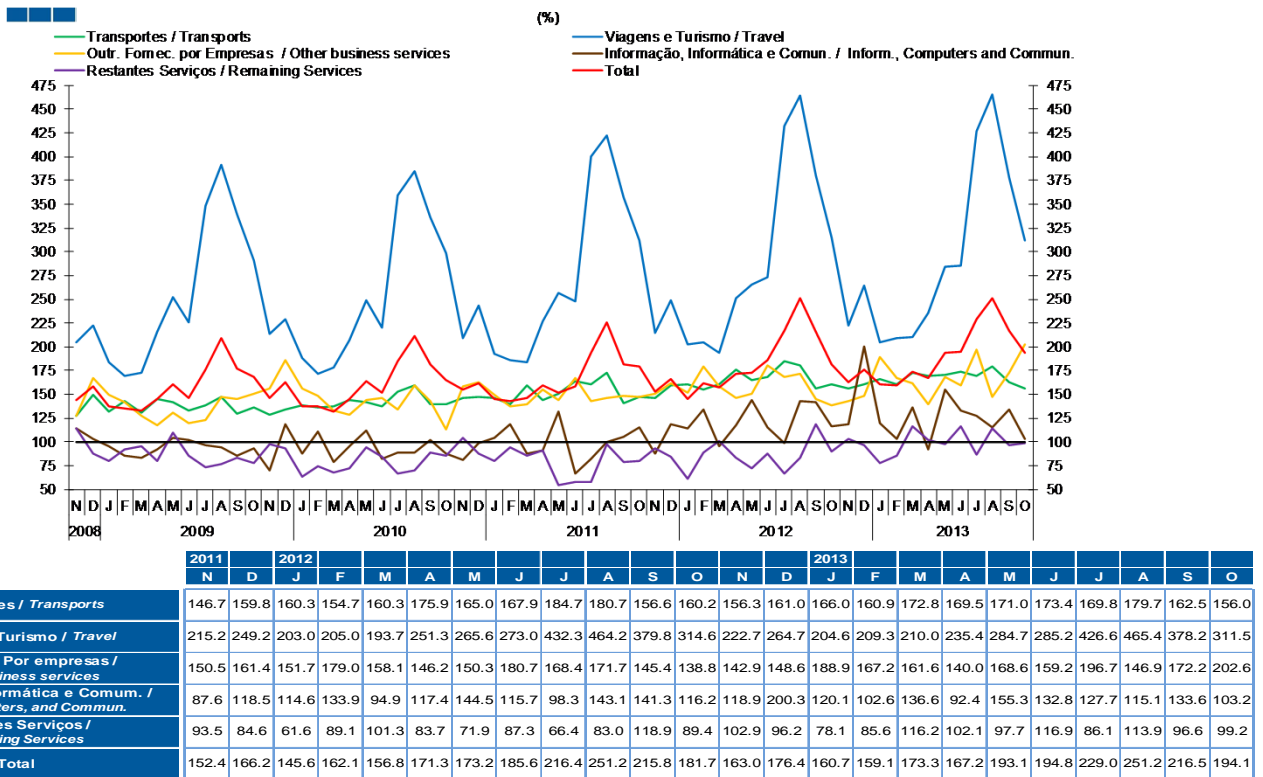
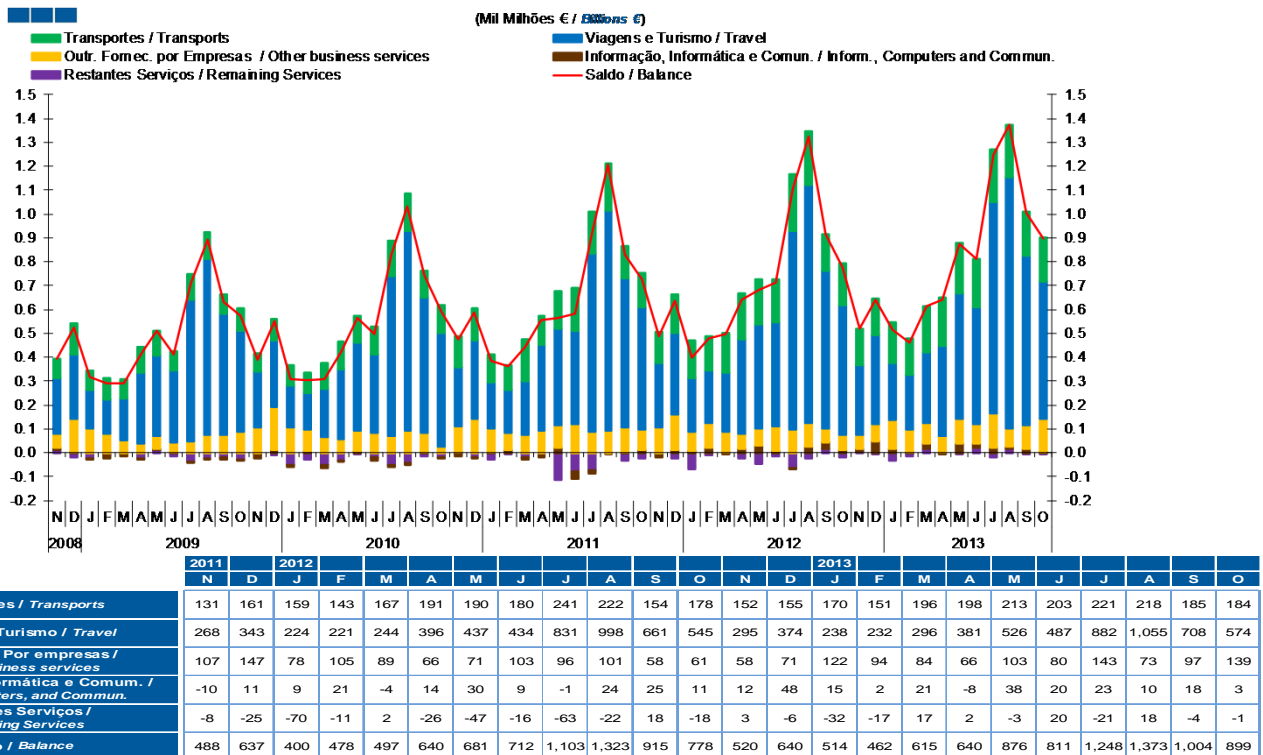


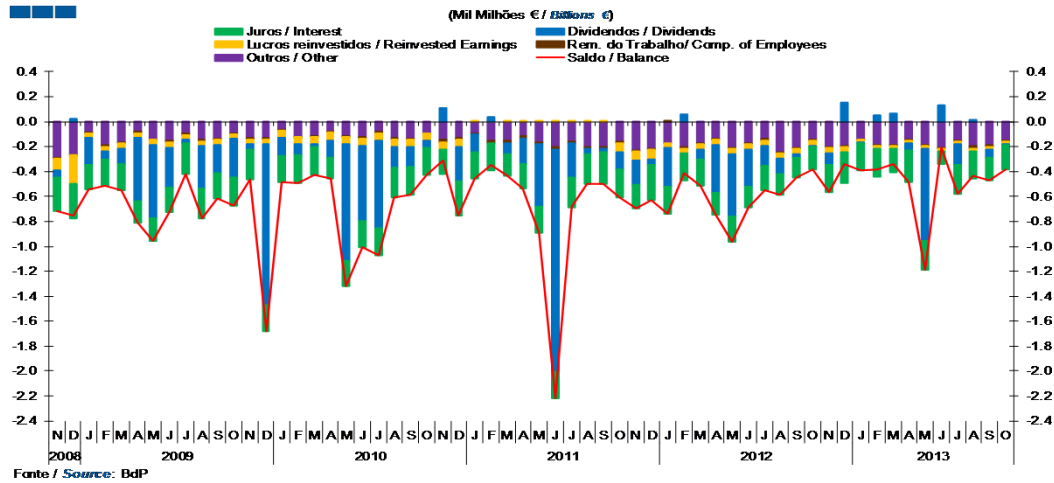
Gráfico / Graph 5.8.  
Saldo  
Balance



Nota: A série Restantes Serviços inclui Construção, Financeiros, Seguros, Direitos de Utilização, Nat. Pessoal, Cult. e Recreat., Operações Governamentais.  
Note: Remaining Services series includes Construction, Financial, Insurance, Royalties and Licence Fees, Personal, Cultural and Recreational Services, Government Services.

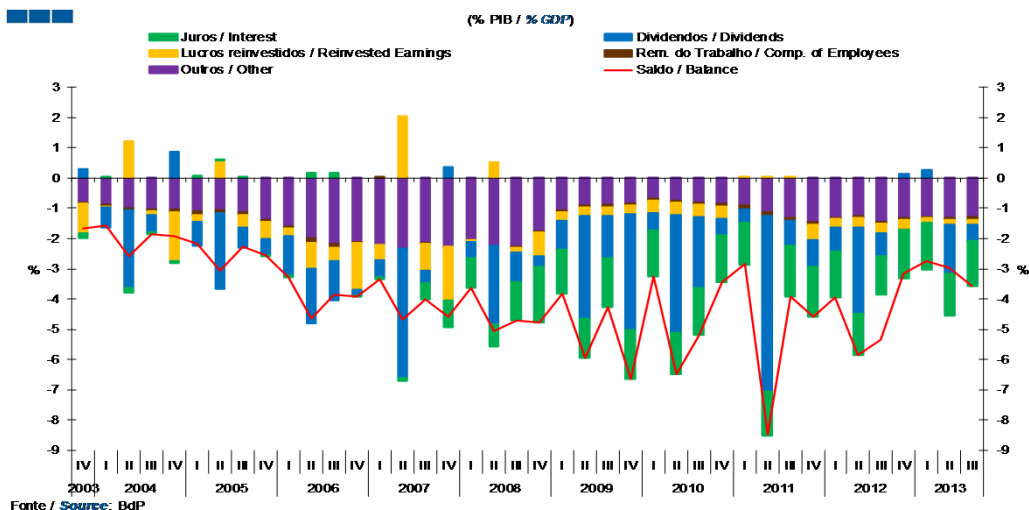
## 6. Balança de Rendimentos / Income Account

Gráfico / Graph 6.1.  
Juros, Dividendos, Lucros Reinvestidos, Rend. do Trabalho e Outros  
Interest, Dividends, Reinvested Earnings, Compensation of Employees and Others



	2011					2012					2013														
	N	D	J	F	M	A	M	J	J	A	S	O	N	D	J	F	M	A	M	J	J	A	S	O	
Remunerações do Trabalho / Compensation of Employees	0.0	0.0	0.0	0.0	0.0	0.0	0.0	0.0	0.0	0.0	0.0	0.0	0.0	0.0	0.0	0.0	0.0	0.0	0.0	0.0	0.0	0.0	0.0	0.0	0.0
Dividendos / Dividends	-0.2	0.0	-0.3	0.1	-0.1	-0.4	-0.5	-0.3	-0.2	-0.1	0.0	0.0	-0.1	0.2	0.0	0.1	0.1	-0.1	-0.7	0.1	-0.2	0.0	-0.1	0.0	0.0
Lucros Reinvestidos / Reinvested Earnings	-0.1	-0.1	0.0	0.0	0.0	0.0	0.0	0.0	0.0	0.0	0.0	0.0	0.0	0.0	0.0	0.0	0.0	0.0	0.0	0.0	0.0	0.0	0.0	0.0	0.0
Juros / Interest	-0.2	-0.3	-0.2	-0.2	-0.2	-0.2	-0.2	-0.2	-0.2	-0.2	-0.2	-0.2	-0.2	-0.3	-0.2	-0.2	-0.2	-0.2	-0.2	-0.1	-0.2	-0.2	-0.2	-0.2	-0.2
Outros / Other	-0.2	-0.2	-0.2	-0.2	-0.2	-0.1	-0.2	-0.2	-0.1	-0.2	-0.2	-0.1	-0.2	-0.2	-0.1	-0.2	-0.2	-0.1	-0.2	-0.2	-0.1	-0.2	-0.2	-0.2	-0.2
Saldo / Balance	-0.7	-0.6	-0.7	-0.4	-0.5	-0.7	-1.0	-0.7	-0.5	-0.6	-0.4	-0.4	-0.6	-0.3	-0.4	-0.4	-0.3	-0.5	-1.2	-0.2	-0.6	-0.4	-0.5	-0.4	-0.4

Gráfico / Graph 6.2.  
Juros, Dividendos, Lucros Reinvestidos, Rend. do Trabalho e Outros  
Interest, Dividends, Reinvested Earnings, Compensation of Employees and Others



	2008				2009				2010				2011				2012				2013			
	IV	I	II	III	IV	I	II	III	IV	I	II	III	IV	I	II	III	IV	I	II	III	IV	I	II	III
Remunerações do Trabalho / Compensation of Employees	0.0	0.0	0.0	0.0	0.0	-0.1	-0.1	-0.1	-0.1	0.0	-0.1	-0.1	-0.1	-0.1	-0.1	-0.1	0.0	-0.1	-0.1	-0.1	0.0	-0.1	-0.1	-0.1
Dividendos / Dividends	0.4	-0.6	-2.6	-1.0	-0.3	-1.0	-3.4	-1.4	-3.9	-0.6	-3.9	-2.3	-0.5	-0.5	-5.8	-0.8	-0.9	-0.8	-0.9	-0.8	-2.9	-0.8	0.1	
Lucros Reinvestidos / Reinvested Earnings	-1.8	-0.1	0.5	-0.1	-0.8	-0.3	-0.3	-0.3	-0.3	-0.4	-0.4	-0.4	-0.4	0.0	0.0	0.0	-0.5	-0.3	-0.3	-0.3	-0.3	-0.2	-0.2	
Juros / Interest	-0.9	-1.0	-0.7	-1.2	-1.9	-1.5	-1.3	-1.6	-1.6	-1.5	-1.4	-1.6	-1.6	-1.4	-1.4	-1.7	-1.7	-1.5	-1.3	-1.3	-1.6	-1.6	-1.4	
Outros / Other	-2.3	-2.0	-2.2	-2.3	-1.8	-1.1	-0.9	-0.9	-0.8	-0.7	-0.7	-0.8	-0.8	-0.9	-1.1	-1.3	-1.4	-1.3	-1.3	-1.3	-1.4	-1.3	-1.3	
Saldo / Balance	-4.6	-3.6	-5.1	-4.7	-4.8	-3.8	-5.9	-4.3	-6.6	-3.3	-6.5	-5.2	-3.5	-2.9	-8.5	-3.9	-4.6	-3.9	-5.8	-5.4	-3.2	-2.7	-3.0	

Nota: A série Restantes Serviços inclui Construção, Financeiros, Seguros, Direitos de Utilização, Nat. Pessoal, Cult. e Recreat., Operações Governamentais.  
Note: Remaining Services series includes Construction, Financial, Insurance, Royalties and Licence Fees, Personal, Cultural and Recreational Services, Government Services.