

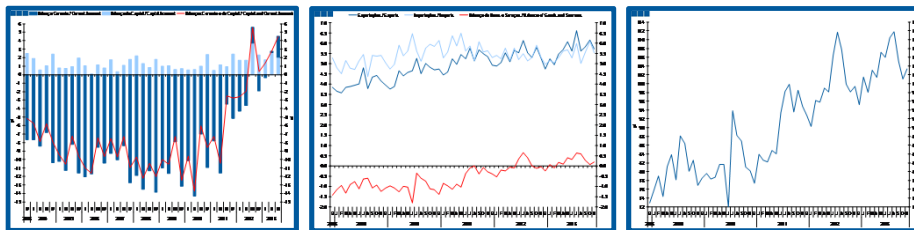
# Estatísticas Temáticas de Conjuntura

## *Short-term Thematic Statistics*

- Nº 1/2014 -

23 de janeiro de 2014

*January, 23, 2014*



## Balanças Corrente e de Capital

### *Current and Capital Accounts*

- Novembro de 2013 -

*- November, 2013 -*

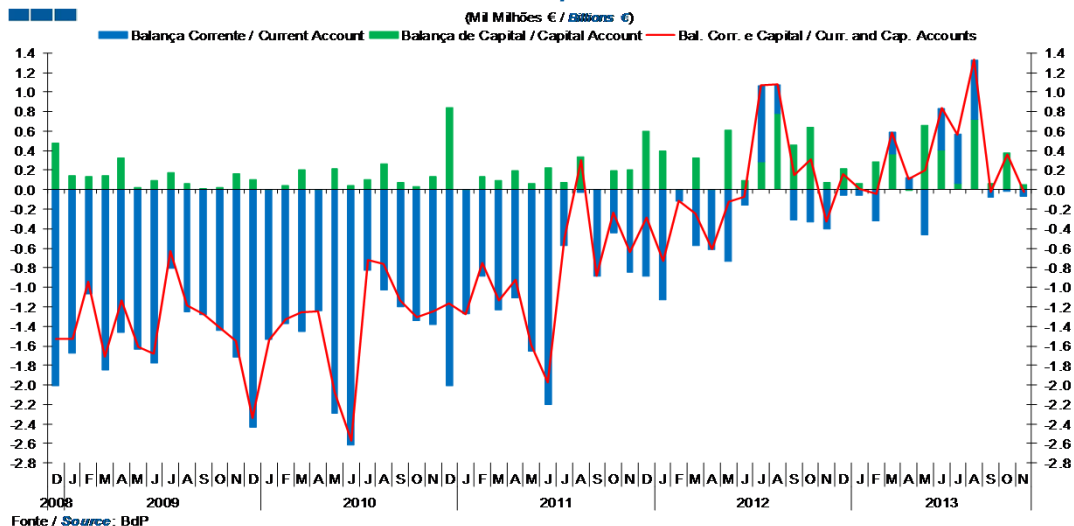
Fonte / *Source*: Banco de Portugal

## Índice / *Index*

	<i>Página / Page</i>
<b>1. Balanças Corrente e de Capital / <i>Capital and Current Accounts</i></b>	
Balanças Corrente e de Capital / <i>Current and Capital Accounts</i>	3
<b>2. Balança Corrente / <i>Current Account</i></b>	
Bens e Serviços, Rendimentos, Transferências Correntes / <i>Goods and Services, Income, Current Transfers</i>	4
<b>3. Balanças de Bens e Serviços / <i>Goods and Services Accounts</i></b>	
Exportações e Importações / <i>Exports and Imports</i>	5-6
Bens e Serviços / <i>Goods and Services</i>	7
<b>4. Balança de Bens / <i>Goods Account</i></b>	
Exportações e Importações / <i>Exports and Imports</i>	8
Variação Homóloga / <i>Annual Change</i>	9
Taxa de Cobertura / <i>Coverage Rate</i>	9
<b>5. Balança de Serviços / <i>Services Account</i></b>	
Exportações e Importações / <i>Exports and Imports</i>	10
Variação Homóloga / <i>Annual Change</i>	11
Taxa de Cobertura / <i>Coverage Rate</i>	11
Variação Homóloga das Exportações / <i>Exports Annual Change</i>	12
Variação Homóloga das Importações / <i>Imports Annual Change</i>	12
Taxa de Cobertura / <i>Coverage Rate</i>	13
Saldo / <i>Balance</i>	13
<b>6. Balança de Rendimentos / <i>Income Account</i></b>	
Juros, Dividendos, Lucros Reinvestidos, Rend. do Trabalho e Outros / <i>Interest, Dividends, Reinvested Earnings, Compensation of Employees and Others</i>	14

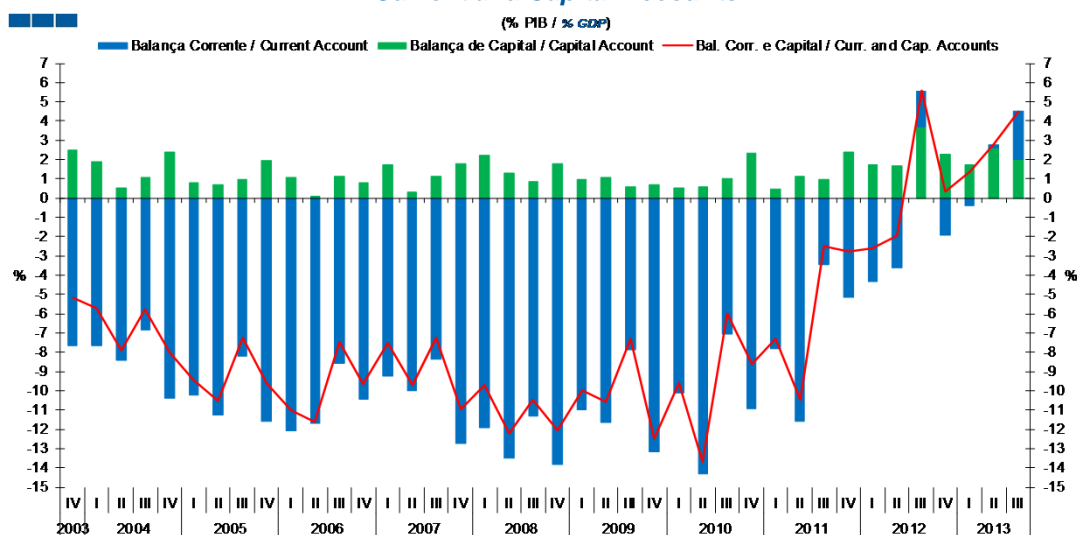
## 1. Balanças Corrente e de Capital / Capital and Current Accounts

Gráfico / Graph 1.1.  
Balanças Corrente e de Capital  
Current and Capital Accounts



	2011			2012			2013			2013			2013			2013			2013			2013		
	D	J	F	M	A	M	J	J	A	S	O	N	D	J	F	M	A	M	J	J	A	S	O	N
Balança Corrente / Current Account	-0.9	-1.1	-0.1	-0.6	-0.6	-0.7	-0.2	0.8	0.3	-0.3	-0.3	-0.4	-0.1	-0.1	-0.3	0.2	0.1	-0.5	0.4	0.5	0.6	-0.1	0.0	-0.1
Balança de Capital / Capital Account	0.6	0.4	0.0	0.3	0.0	0.6	0.1	0.3	0.8	0.5	0.6	0.1	0.2	0.1	0.3	0.4	0.0	0.7	0.4	0.1	0.7	0.1	0.4	0.1
Bal. Corr. e Cap. / Curr. and Cap. Accounts	-0.3	-0.7	-0.1	-0.2	-0.6	-0.1	-0.1	1.1	1.1	0.1	0.3	-0.3	0.2	0.0	0.0	0.6	0.1	0.2	0.8	0.6	1.3	0.0	0.4	0.0

Gráfico / Graph 1.2.  
Balanças Corrente e de Capital  
Current and Capital Accounts



	2008			2009			2010			2011			2012			2013				
	IV	I	II	III	IV	I	II	III	IV	I	II	III	IV	I	II	III	IV			
Balança Corrente / Current Account	-13.8	-11.0	-11.6	-7.9	-13.2	-10.1	-14.3	-7.0	-10.9	-7.8	-11.6	-3.5	-5.2	-4.3	-3.6	1.9	-1.9	-0.4	0.2	2.5
Balança de Capital / Capital Account	1.8	1.0	1.1	0.6	0.7	0.5	0.6	1.0	2.3	0.5	1.1	0.9	2.4	1.7	1.7	3.7	2.3	1.8	2.6	2.0
Bal. Corr. e Cap. / Curr. and Cap. Accounts	-12.0	-10.0	-10.6	-7.3	-12.5	-9.6	-13.7	-6.0	-8.6	-7.3	-10.5	-2.5	-2.7	-2.6	-2.0	5.6	0.3	1.4	2.8	4.5

## 2. Balança Corrente / Current Account

Gráfico / Graph 2.1.  
Bens e Serviços, Rendimentos, Transferências Correntes  
Goods and Services, Income, Current Transfers

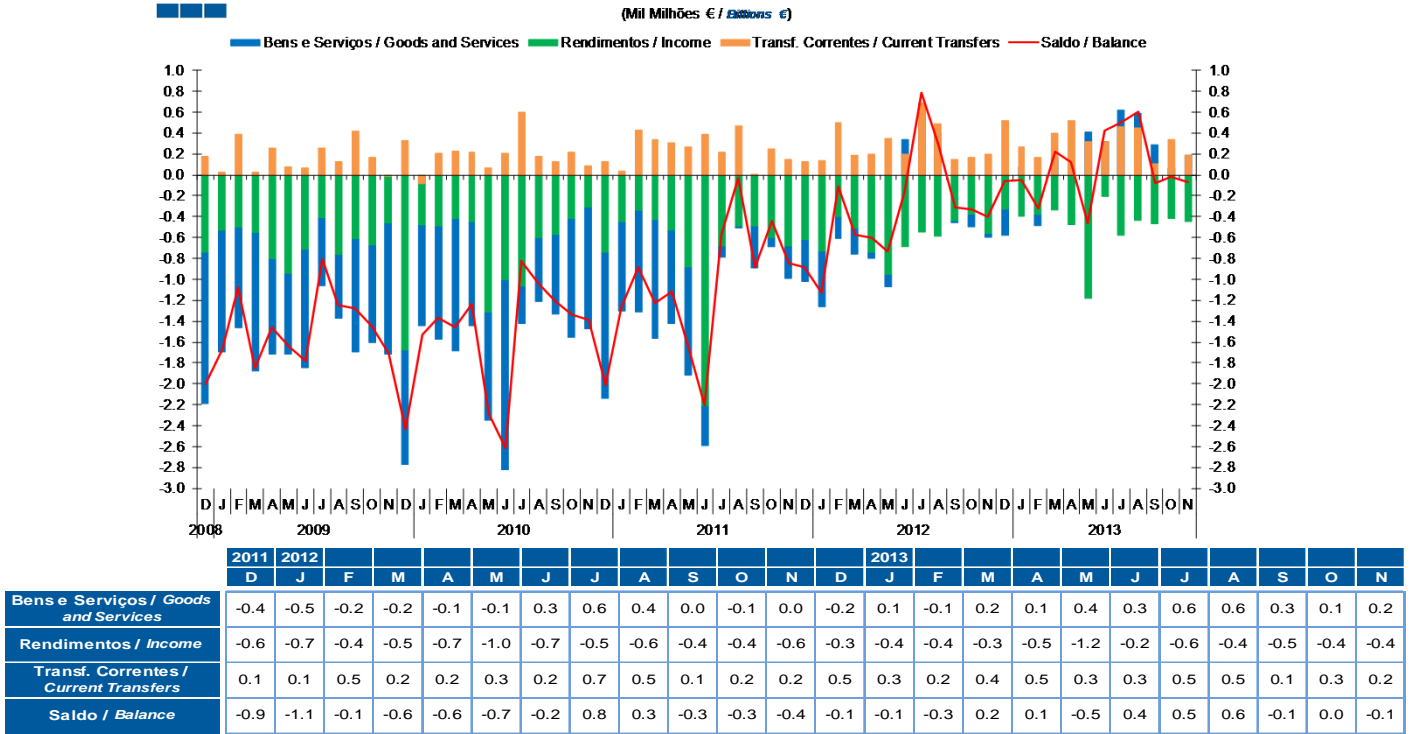
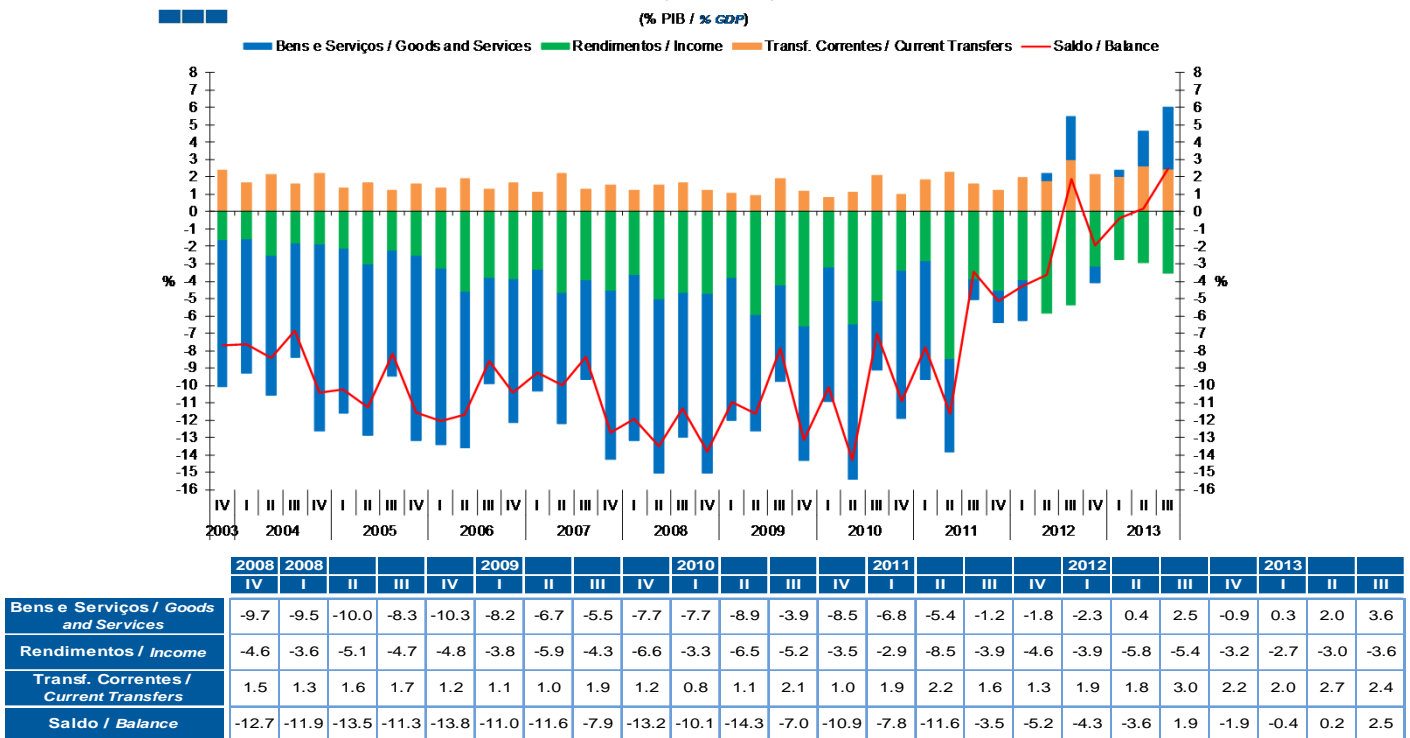
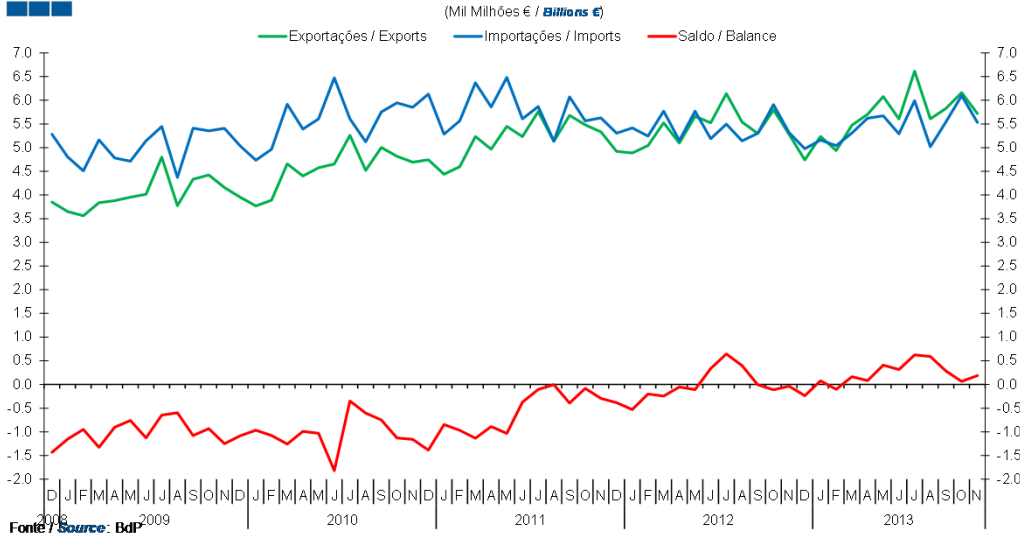


Gráfico / Graph 2.2.  
Bens e Serviços, Rendimentos, Transferências Correntes  
Goods and Services, Income, Current Transfers



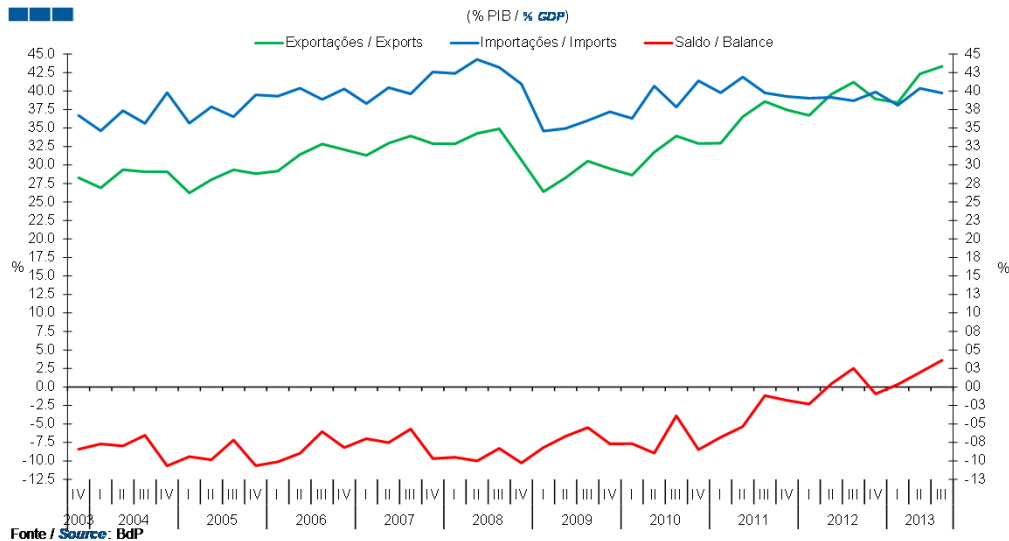
### 3. Balanças de Bens e Serviços / Goods and Services Accounts

Gráfico / Graph 3.1.  
 Exportações e Importações  
 Exports and Imports



	2011				2012				2013				2013											
	D	J	F	M	A	M	J	J	A	S	O	N	D	J	F	M	A	M	J	J	A	S	O	N
Exportações / Exports	4.9	4.9	5.0	5.5	5.1	5.7	5.5	6.1	5.5	5.3	5.8	5.3	4.7	5.2	4.9	5.5	5.7	6.1	5.6	6.6	5.6	5.8	6.2	5.7
Importações / Imports	5.3	5.4	5.2	5.8	5.2	5.8	5.2	5.5	5.1	5.3	5.9	5.3	5.0	5.2	5.0	5.3	5.6	5.7	5.3	6.0	5.0	5.5	6.1	5.5
Saldo / Balance	-0.4	-0.5	-0.2	-0.2	-0.1	-0.1	0.3	0.6	0.4	0.0	-0.1	0.0	-0.2	0.1	-0.1	0.2	0.1	0.4	0.3	0.6	0.6	0.3	0.1	0.2

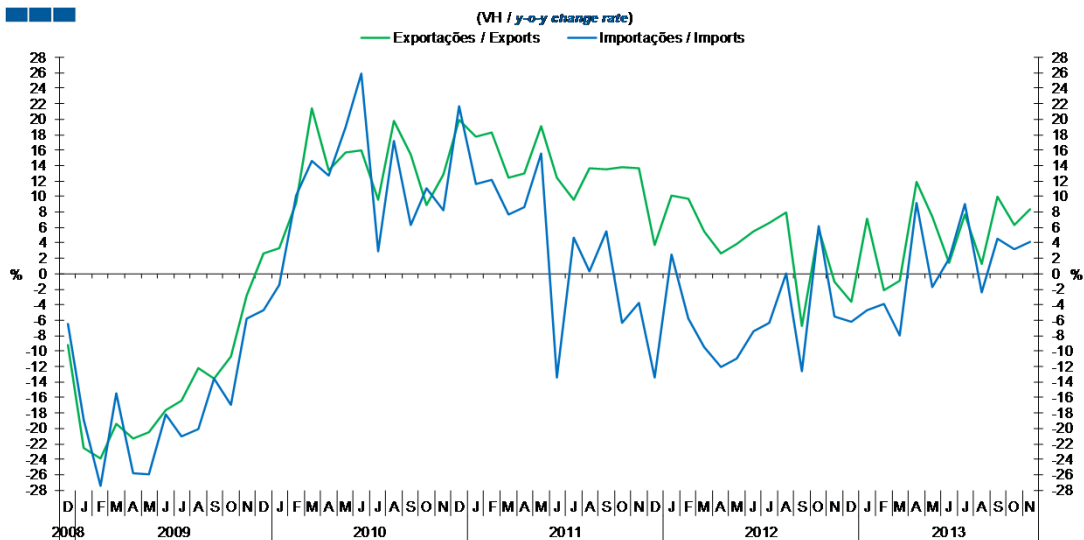
Gráfico / Graph 3.2.  
 Exportações e Importações  
 Exports and Imports



	2008				2009				2010				2011				2012				2013			
	IV	I	II	III	IV	I	II	III	IV	I	II	III	IV	I	II	III	IV	I	II	III	IV	I	II	III
Exportações / Exports	32.9	32.9	34.3	34.9	30.7	26.4	28.3	30.5	29.5	28.6	31.7	33.9	32.9	33.0	36.5	38.6	37.4	36.7	39.6	41.2	38.9	38.4	42.3	43.3
Importações / Imports	42.6	42.4	44.3	43.2	40.9	34.6	34.9	36.0	37.2	36.3	40.7	37.8	41.4	39.8	41.9	39.8	39.3	39.0	39.1	38.7	39.9	38.1	40.4	39.7
Saldo / Balance	-9.7	-9.5	-10.0	-8.3	-10.3	-8.2	-6.7	-5.5	-7.7	-7.7	-8.9	-3.9	-8.5	-6.8	-5.4	-1.2	-1.8	-2.3	0.4	2.5	-0.9	0.3	2.0	3.6

### 3. Balanças de Bens e Serviços / Goods and Services Accounts

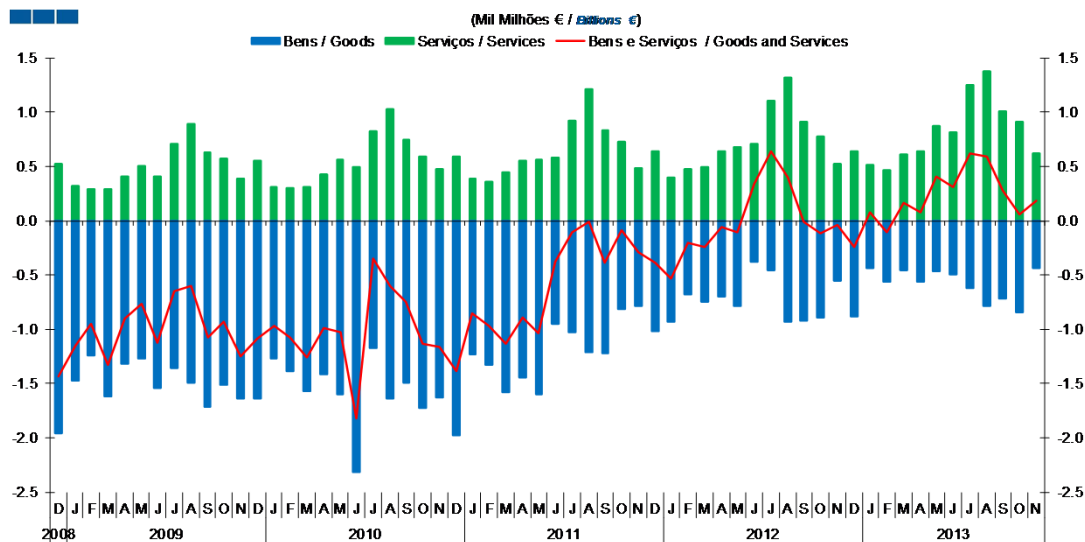
Gráfico / Graph 3.3.  
 Exportações e Importações  
 Exports and Imports



	2011		2012					2013																
	D	J	F	M	A	M	J	J	A	S	O	N	D	J	F	M	A	M	J	J	A	S	O	N
Exportações / Exports	3.7	10.1	9.7	5.5	2.6	3.9	5.5	6.6	7.9	-6.7	5.8	-1.0	-3.7	7.2	-2.1	-0.9	11.9	7.4	1.5	7.7	1.2	10.0	6.3	8.3
Importações / Imports	-13.4	2.5	-5.8	-9.4	-12.0	-11.0	-7.5	-6.3	0.1	-12.6	6.2	-5.6	-6.2	-4.7	-3.9	-8.0	9.1	-1.7	2.0	9.0	-2.4	4.5	3.2	4.1

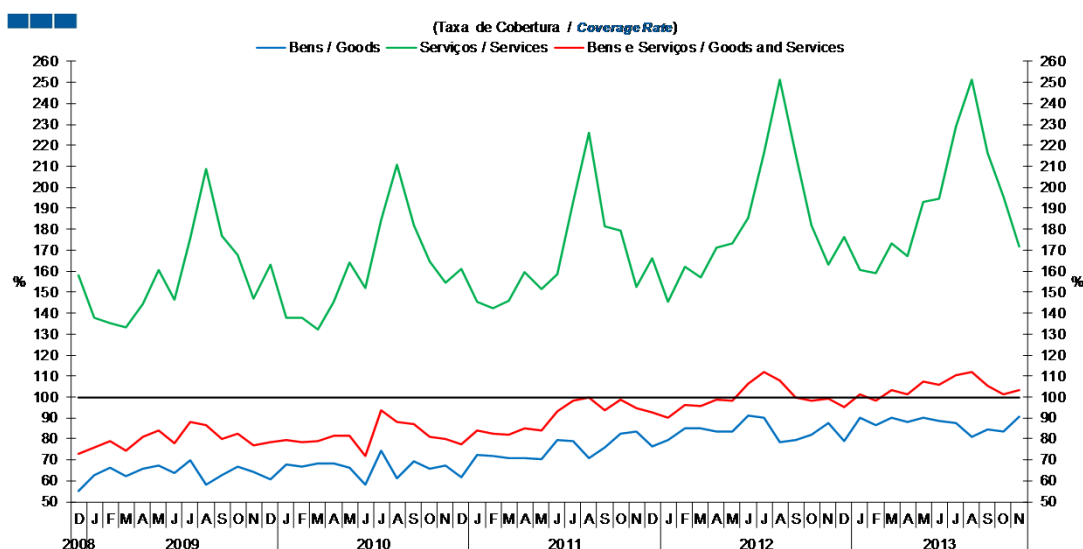
### 3. Balanças de Bens e Serviços / Goods and Services Accounts

Gráfico / Graph 3.4.  
Bens e Serviços  
Goods and Services



	2011		2012					2013					2013											
	D	J	F	M	A	M	J	J	A	S	O	N	D	J	F	M	A	M	J	J	A	S	O	N
<b>Serviços / Services</b>	0.6	0.4	0.5	0.5	0.6	0.7	0.7	1.1	1.3	0.9	0.8	0.5	0.6	0.5	0.5	0.6	0.6	0.9	0.8	1.2	1.4	1.0	0.9	0.6
<b>Bens / Goods</b>	-1.0	-0.9	-0.7	-0.7	-0.7	-0.8	-0.4	-0.5	-0.9	-0.9	-0.9	-0.6	-0.9	-0.4	-0.6	-0.5	-0.6	-0.5	-0.5	-0.6	-0.8	-0.7	-0.8	-0.4
<b>Bens e Serviços / Goods and Services</b>	-0.4	-0.5	-0.2	-0.2	-0.1	-0.1	0.3	0.6	0.4	0.0	-0.1	0.0	-0.2	0.1	-0.1	0.2	0.1	0.4	0.3	0.6	0.6	0.3	0.1	0.2

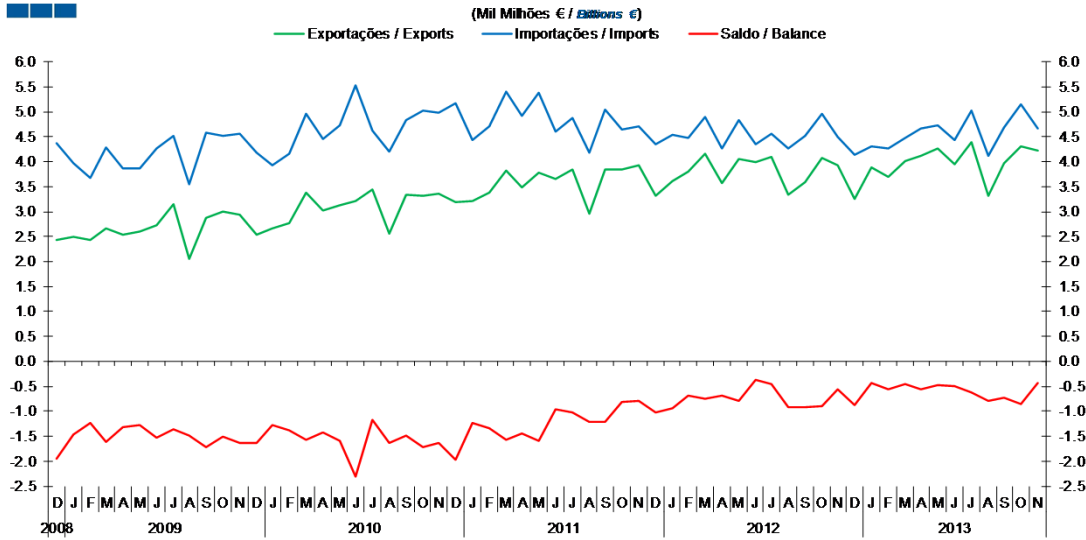
Gráfico / Graph 3.5.  
Bens e Serviços  
Goods and Services



	2011		2012					2013					2013											
	D	J	F	M	A	M	J	J	A	S	O	N	D	J	F	M	A	M	J	J	A	S	O	N
<b>Serviços / Services</b>	166.2	145.6	162.1	156.8	171.3	173.2	185.6	216.4	251.2	215.8	181.7	163.0	176.4	160.7	159.1	173.3	167.2	193.1	194.8	229.0	251.2	216.5	195.5	171.7
<b>Bens / Goods</b>	76.5	79.5	84.8	84.8	83.7	83.7	91.4	89.9	78.3	79.6	82.1	87.6	78.8	89.9	86.8	89.9	88.0	90.1	88.8	87.6	81.0	84.6	83.6	90.6
<b>Bens e Serviços / Goods and Services</b>	92.8	90.2	96.2	95.8	99.0	98.1	106.5	111.7	107.7	99.9	98.1	99.3	95.2	101.5	98.0	103.1	101.5	107.2	105.9	110.4	111.8	105.1	101.0	103.4

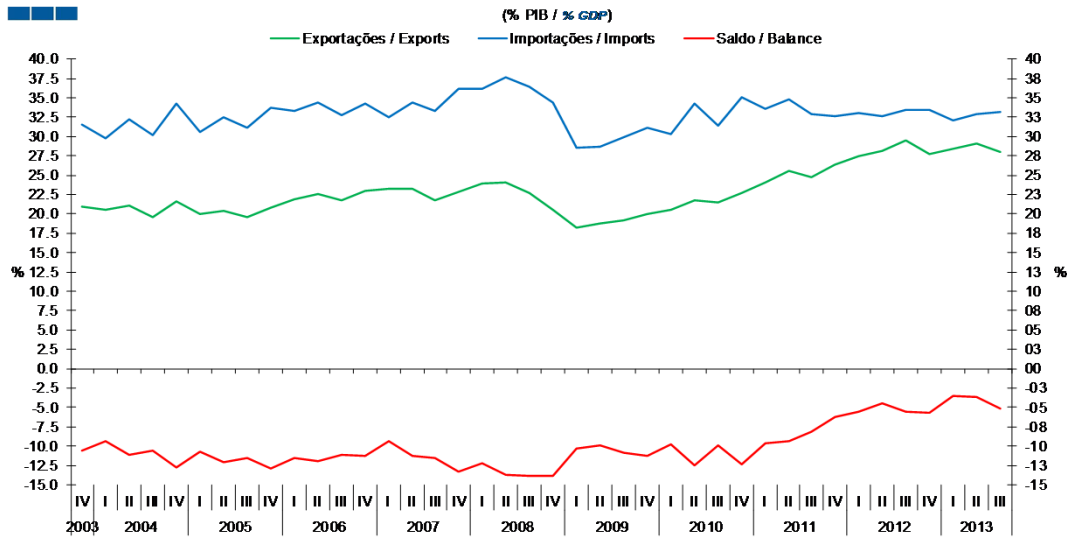
#### 4. Balança de Bens / Goods Account

Gráfico / Graph 4.1.  
 Exportações e Importações  
 Exports and Imports



	2011		2012				2013																	
	D	J	F	M	A	M	J	J	A	S	O	N	D	J	F	M	A	M	J	J	A	S	O	N
Exportações / Exports	3.3	3.6	3.8	4.2	3.6	4.0	4.0	4.1	3.3	3.6	4.1	3.9	3.3	3.9	3.7	4.0	4.1	4.3	3.9	4.4	3.3	4.0	4.3	4.2
Importações / Imports	4.3	4.5	4.5	4.9	4.3	4.8	4.4	4.5	4.3	4.5	5.0	4.5	4.1	4.3	4.3	4.5	4.7	4.7	4.4	5.0	4.1	4.7	5.1	4.7
Saldo / Balance	-1.0	-0.9	-0.7	-0.7	-0.7	-0.8	-0.4	-0.5	-0.9	-0.9	-0.9	-0.6	-0.9	-0.4	-0.6	-0.5	-0.6	-0.5	-0.5	-0.6	-0.8	-0.7	-0.8	-0.4

Gráfico / Graph 4.2.  
 Exportações e Importações  
 Exports and Imports



	2008				2009				2010				2011				2012				2013			
	IV	I	II	III	IV	I	II	III	IV	I	II	III	IV	I	II	III	IV	I	II	III	IV	I	II	III
Exportações / Exports	22.8	23.9	24.1	22.6	20.5	18.2	18.8	19.1	19.9	20.5	21.8	21.5	22.8	24.1	25.5	24.8	26.4	27.4	28.2	29.5	27.7	28.5	29.0	28.1
Importações / Imports	36.2	36.2	37.7	36.4	34.3	28.5	28.6	29.9	31.2	30.3	34.2	31.4	35.1	33.6	34.8	32.9	32.6	33.0	32.7	33.4	33.4	32.0	32.9	33.2
Saldo / Balance	-13.3	-12.2	-13.6	-13.8	-13.8	-10.3	-9.8	-10.8	-11.3	-9.8	-12.4	-9.9	-12.3	-9.6	-9.3	-8.1	-6.2	-5.6	-4.5	-5.6	-5.7	-3.6	-3.7	-5.1

#### 4. Balança de Bens / Goods Account

Gráfico / Graph 4.3.  
 Variação Homóloga  
 Annual Change

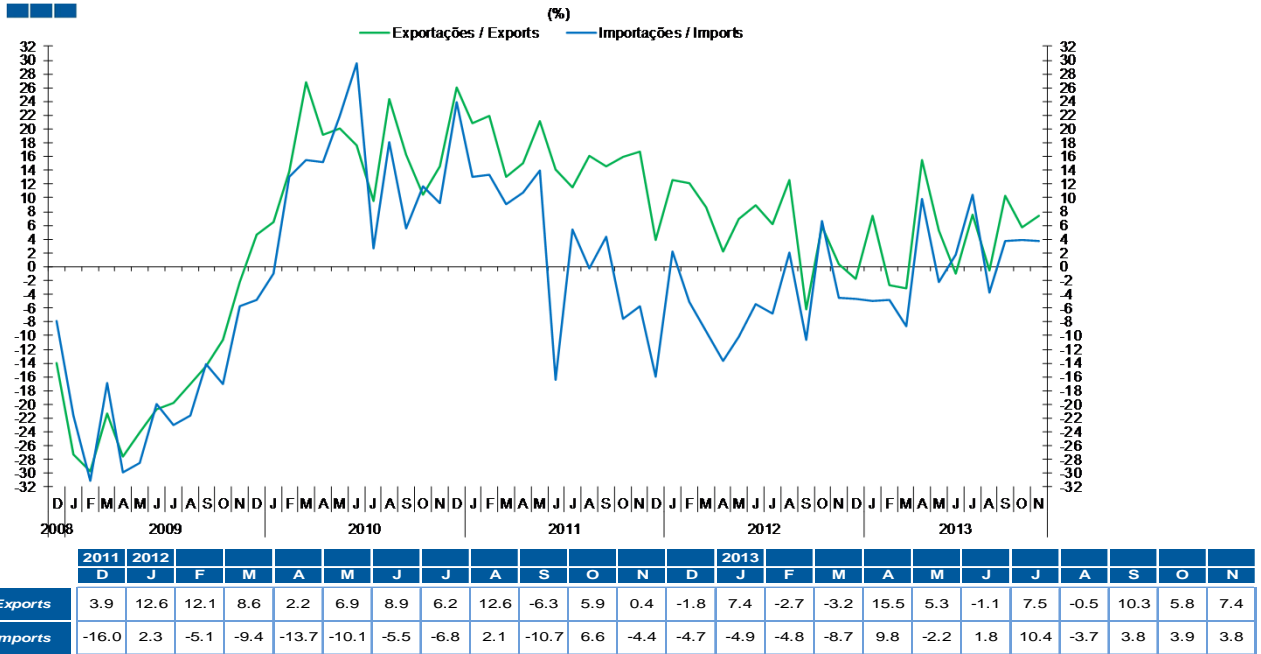
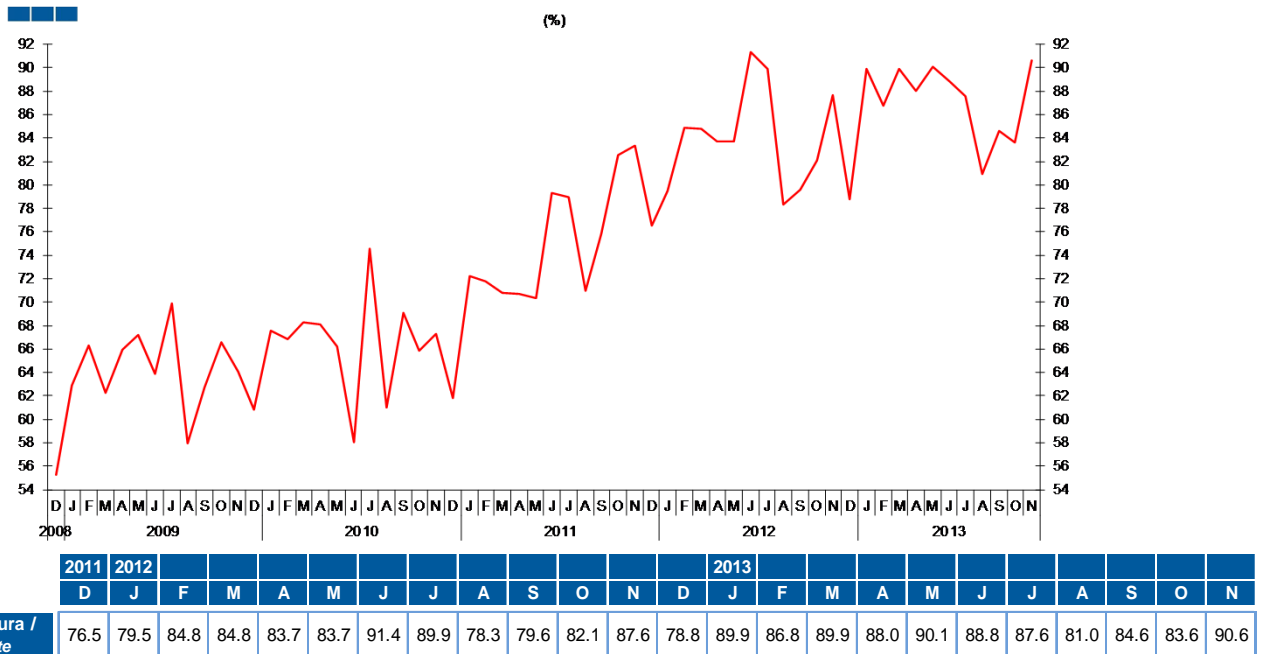
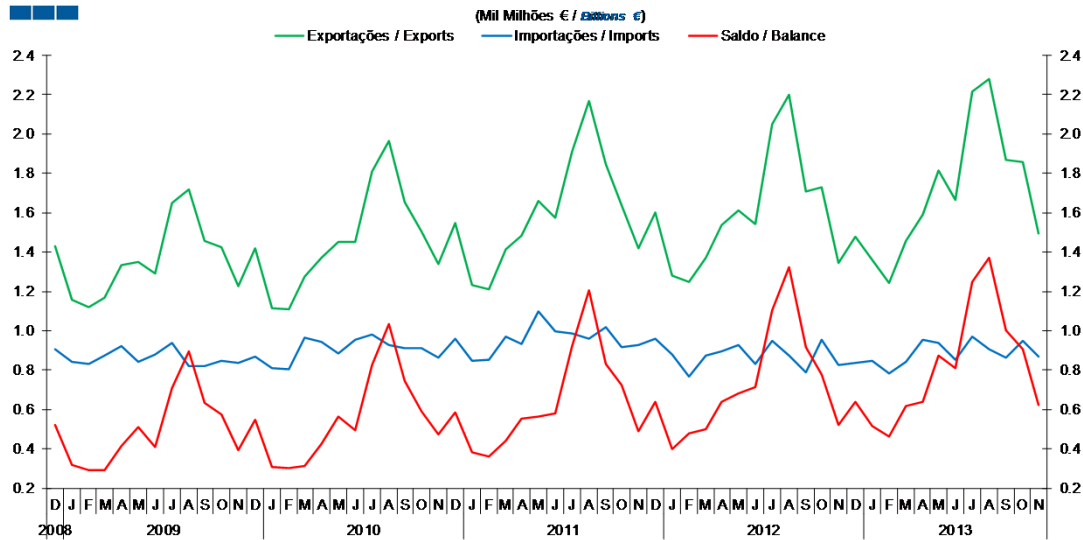


Gráfico / Graph 4.4.  
 Taxa de Cobertura  
 Coverage Rate



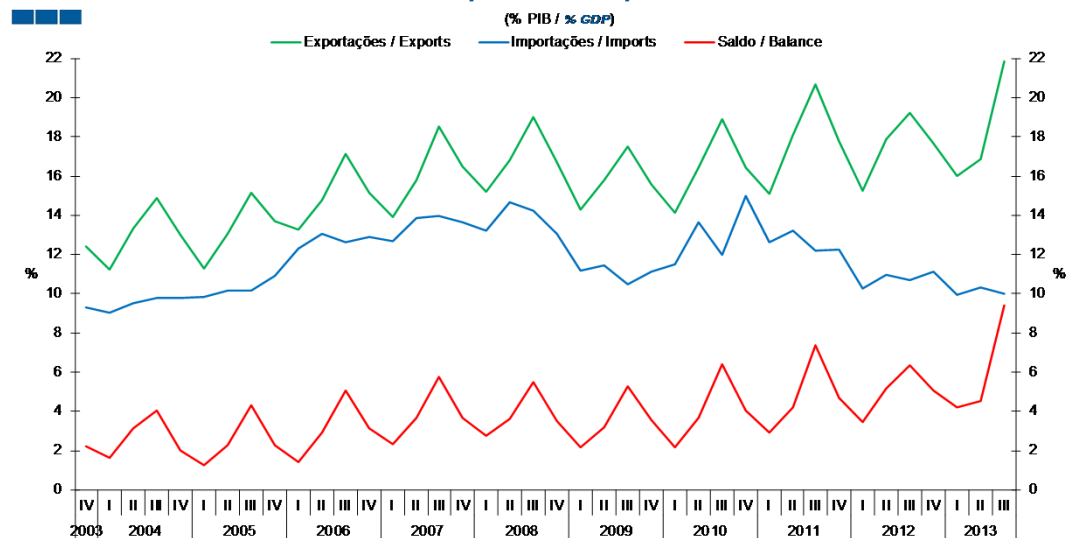
## 5. Balança de Serviços / Services Account

Gráfico / Graph 5.1.  
 Exportações e Importações  
 Exports and Imports



	2011				2012				2013															
	D	J	F	M	A	M	J	J	A	S	O	N	D	J	F	M	A	M	J	J	A	S	O	N
Exportações / Exports	1.6	1.3	1.2	1.4	1.5	1.6	1.5	2.1	2.2	1.7	1.7	1.3	1.5	1.4	1.2	1.5	1.6	1.8	1.7	2.2	2.3	1.9	1.9	1.5
Importações / Imports	1.0	0.9	0.8	0.9	0.9	0.9	0.8	0.9	0.9	0.8	1.0	0.8	0.8	0.8	0.8	0.8	1.0	0.9	0.9	1.0	0.9	0.9	1.0	0.9
Saldo / Balance	0.6	0.4	0.5	0.5	0.6	0.7	0.7	1.1	1.3	0.9	0.8	0.5	0.6	0.5	0.5	0.6	0.6	0.9	0.8	1.2	1.4	1.0	0.9	0.6

Gráfico / Graph 5.2.  
 Exportações e Importações  
 Exports and Imports



	2008				2009				2010				2011				2012				2013			
	IV	I	II	III	IV	I	II	III	IV	I	II	III	IV	I	II	III	IV	I	II	III	IV	I	II	III
Exportações / Exports	16.5	15.2	16.8	19.0	16.7	14.3	15.8	17.5	15.6	14.1	16.4	18.9	16.5	15.1	18.1	20.7	17.8	15.3	17.9	19.2	17.6	16.0	16.9	21.8
Importações / Imports	13.7	13.2	14.6	14.3	13.0	11.2	11.4	10.5	11.1	11.5	13.6	12.0	15.0	12.6	13.2	12.2	12.3	10.3	11.0	10.7	11.1	9.9	10.3	10.0
Saldo / Balance	3.6	2.7	3.6	5.5	3.5	2.2	3.2	5.3	3.6	2.1	3.6	6.4	4.1	2.9	4.2	7.3	4.7	3.5	5.2	6.4	5.1	4.2	4.5	9.4

## 5. Balança de Serviços / Services Account

Gráfico / Graph 5.3.  
 Variação Homóloga  
 Annual Change

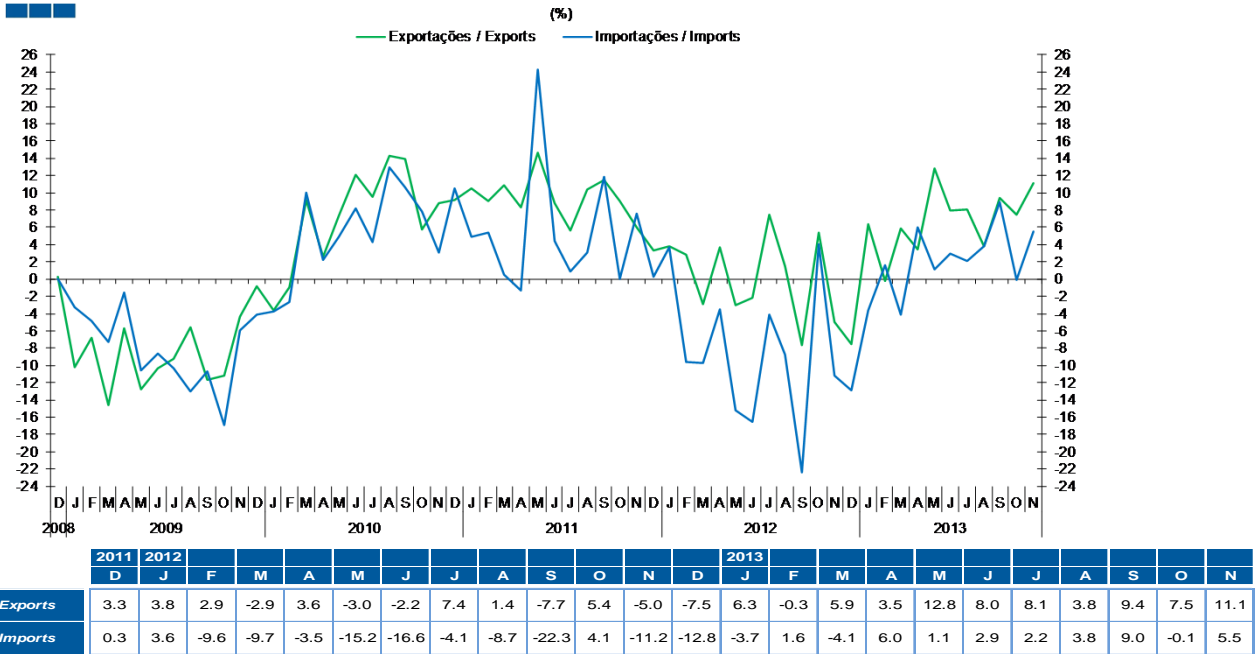
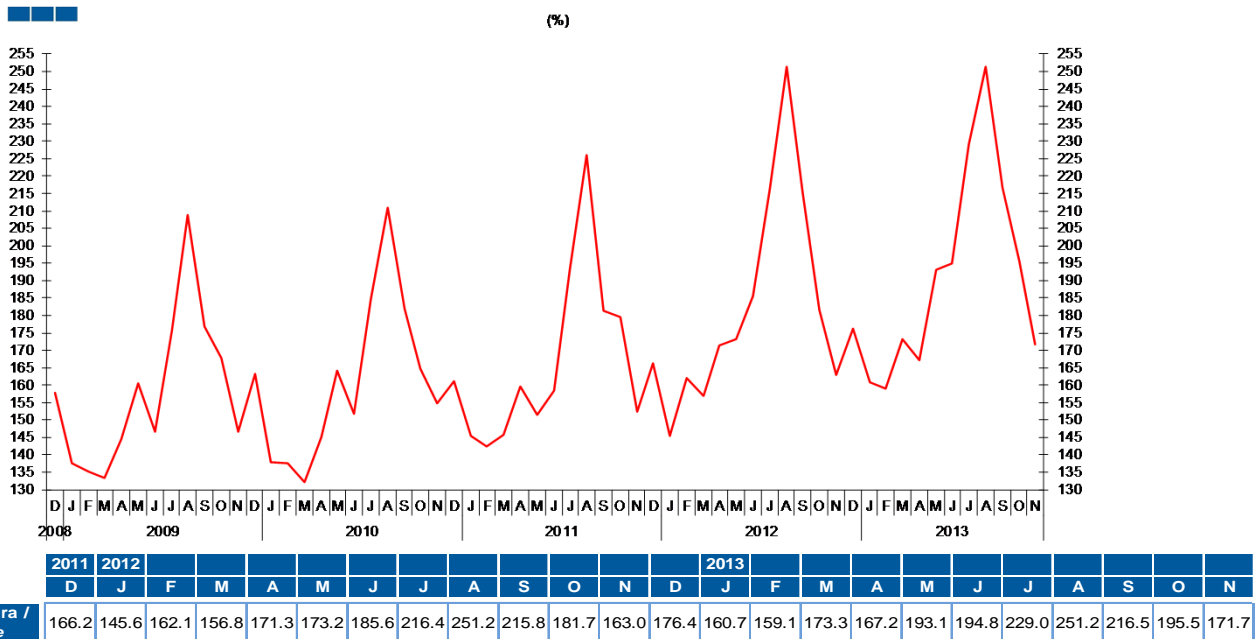
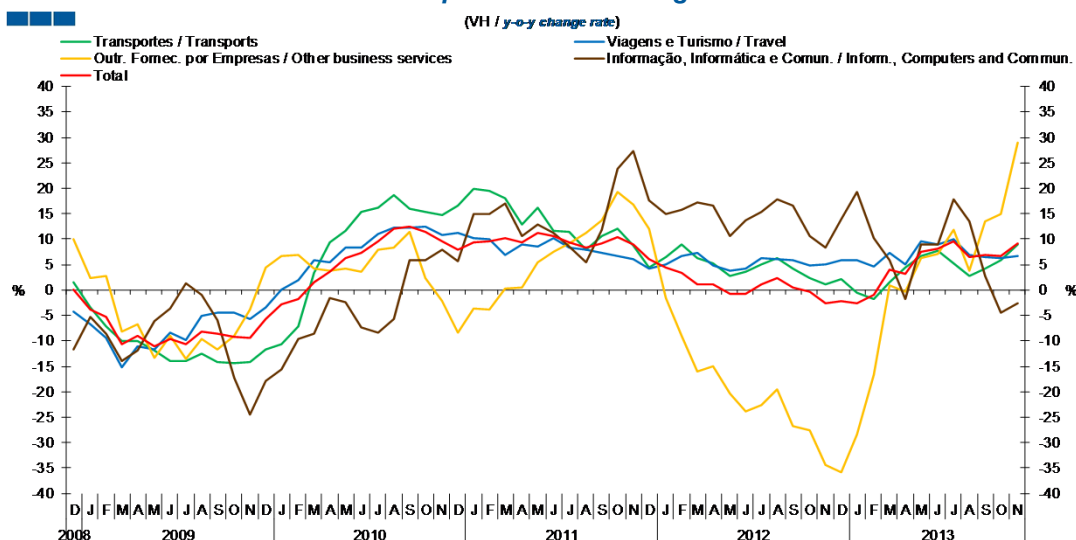


Gráfico / Graph 5.4.  
 Taxa de Cobertura  
 Coverage Rate



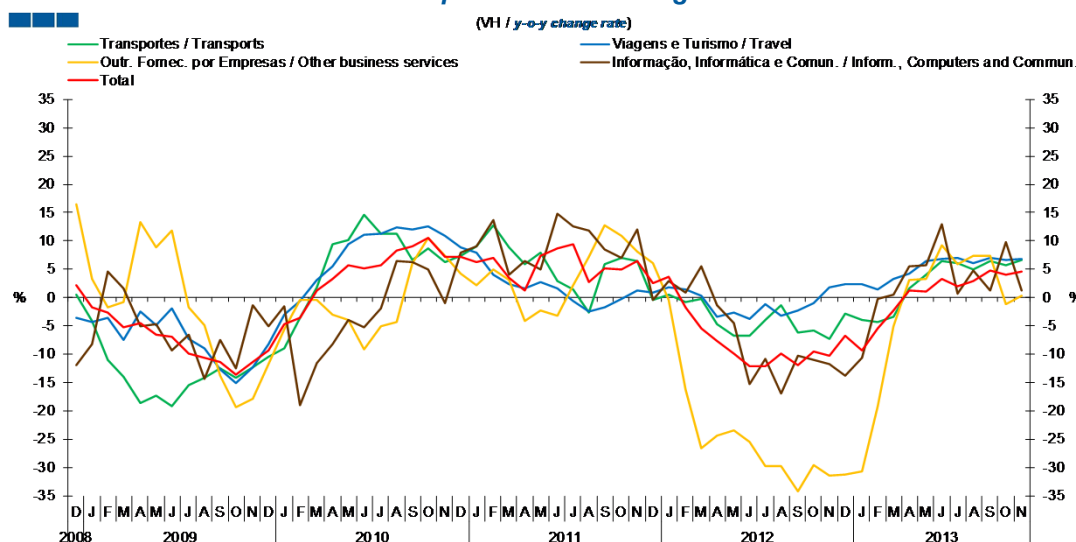
## 5. Balança de Serviços / Services Account

Gráfico / Graph 5.5.  
Variação Homóloga das Exportações  
Exports Annual Change



	2011		2012		2013																			
	D	J	F	M	A	M	J	J	A	S	O	N	D	J	F	M	A	M	J	J	A	S	O	N
Transportes / Transports	4.5	6.5	8.9	6.2	5.2	2.8	3.6	4.9	6.2	4.3	2.4	1.1	2.2	-0.6	-1.7	1.5	4.5	6.7	7.7	5.3	2.7	4.1	5.9	9.0
Viagens e Turismo / Travel	4.1	5.0	6.8	7.2	4.9	3.8	4.1	6.2	6.1	5.8	4.9	5.1	5.8	6.0	4.6	7.3	5.0	9.6	8.9	10.0	6.8	6.4	6.2	6.7
Outr. Fomec. por empresas / Other business services	12.0	-1.6	-9.1	-16.1	-15.1	-20.5	-23.9	-22.7	-19.5	-26.9	-27.5	-34.5	-35.8	-28.5	-16.7	1.0	-0.3	6.3	7.1	11.8	3.8	13.5	14.9	29.0
Informação, Informática e Comun. / Inform., Computers, and Commun.	17.6	15.0	15.7	17.2	16.6	10.5	13.7	15.4	17.7	16.6	10.6	8.4	13.8	19.4	10.1	5.9	-1.7	9.0	9.0	17.9	13.4	2.7	-4.4	-2.6
Total	6.1	4.3	3.3	1.1	1.2	-0.8	-0.7	1.1	2.4	0.5	-0.4	-2.5	-2.2	-2.6	-1.0	4.1	3.2	7.5	8.2	9.5	6.4	6.9	6.6	9.2

Gráfico / Graph 5.6.  
Variação Homóloga das Importações  
Imports Annual Change

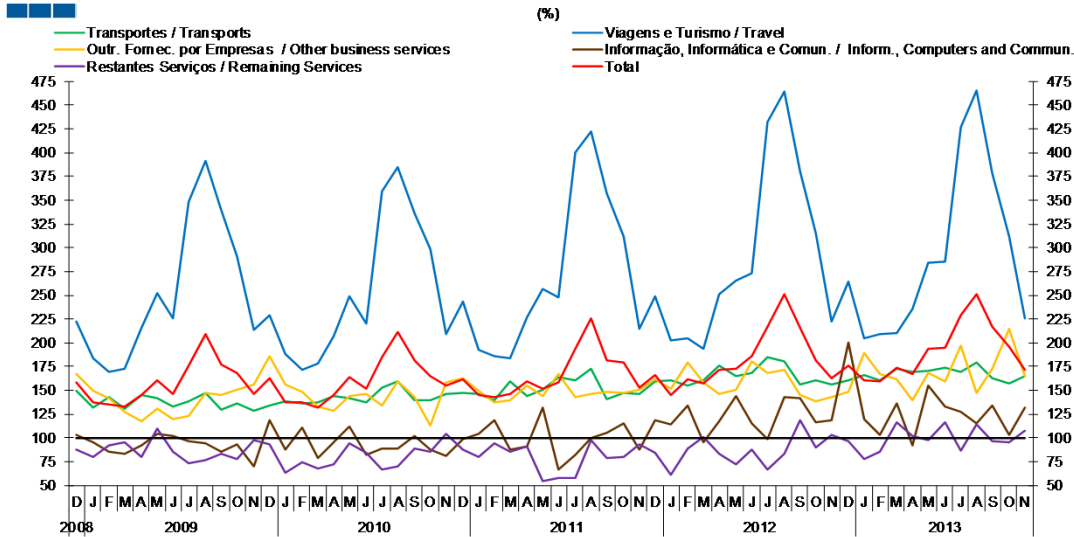


	2011		2012		2013																			
	D	J	F	M	A	M	J	J	A	S	O	N	D	J	F	M	A	M	J	J	A	S	O	N
Transportes / Transports	-0.3	0.5	-0.7	-0.3	-4.7	-6.7	-6.7	-4.0	-1.3	-6.1	-5.8	-7.3	-2.9	-4.0	-4.4	-3.5	1.7	4.0	6.5	6.1	5.0	6.4	5.7	6.6
Viagens e Turismo / Travel	0.8	1.7	1.4	0.4	-3.3	-2.7	-3.7	-1.2	-3.2	-2.2	-0.9	1.8	2.4	2.4	1.5	3.2	4.2	6.4	6.8	7.0	6.0	7.0	6.6	6.8
Outr. Fomec. por empresas / Other business services	6.0	-0.4	-16.2	-26.6	-24.3	-23.5	-25.5	-29.8	-29.8	-34.3	-29.7	-31.5	-31.2	-30.7	-19.1	-5.0	3.1	3.3	9.2	5.9	7.4	7.4	-1.1	0.3
Informação, Informática e Comun. / Inform., Computers, and Commun.	-0.4	3.0	0.9	5.5	-1.3	-4.4	-15.2	-10.9	-16.9	-10.3	-11.0	-11.8	-13.9	-10.6	-0.2	0.4	5.5	5.6	12.9	0.6	4.8	1.2	9.7	1.3
Total	2.5	3.7	-1.8	-5.4	-7.6	-9.8	-12.1	-12.1	-9.8	-11.9	-9.5	-10.3	-6.8	-9.4	-5.5	-2.2	1.2	1.0	3.3	2.0	2.9	4.8	3.9	4.5

Nota: Não inclui as séries Construção, Financeiros, Seguros, Direitos de Utilização, Nat. Pessoal, Cult. e Recreat., Operações Gov. (Restantes Serviços), devido ao seu baixo valor relativo e elevada variabilidade.  
Note: Does not include Construction, Financial, Insurance, Royalties and Licence Fees, Personal, Cultural and Recreational Serv., Government Serv. (Remaining Services) because of its relative small value and high variability.

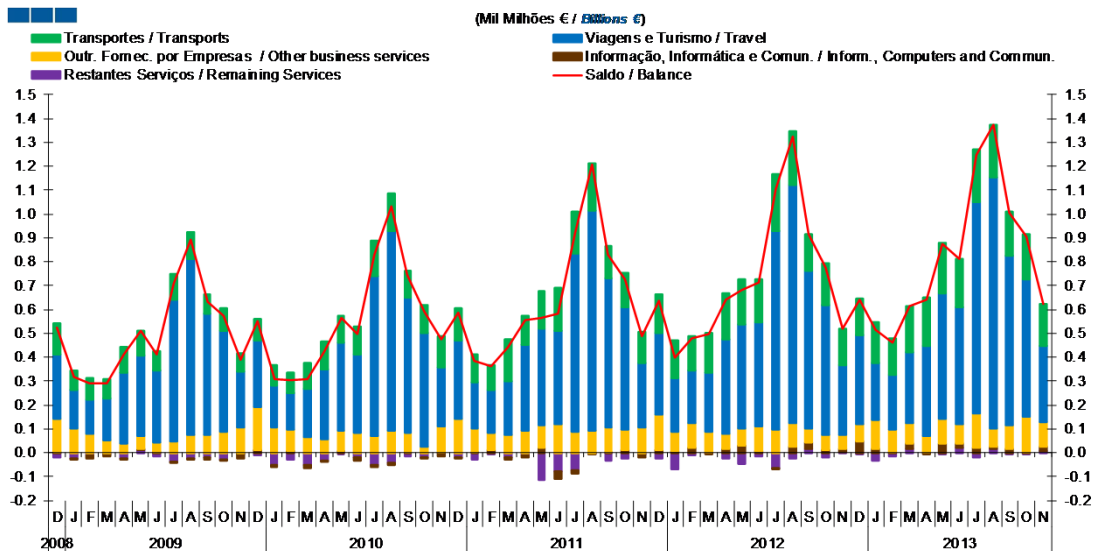
## 5. Balança de Serviços / Services Account

Gráfico / Graph 5.7.  
Taxa de Cobertura  
Coverage Rate



	2011		2012		2013		2013		2013		2013		2013		2013		2013		2013					
	D	J	F	M	A	M	J	J	A	S	O	N	D	J	F	M	A	M	J	J	A	S	O	N
Transportes / Transports	159.8	160.3	154.7	160.3	175.9	165.0	167.9	184.7	180.7	156.6	160.2	156.3	161.0	166.0	160.9	172.8	169.5	171.0	173.4	169.8	179.7	162.5	157.7	164.7
Viagens e Turismo / Travel	249.2	203.0	205.0	193.7	251.3	265.6	273.0	432.3	464.2	379.8	314.6	222.7	264.7	204.6	209.3	210.0	235.4	284.7	285.2	426.6	465.4	378.2	311.5	225.2
Outro Forn. Por empresas / Other business services	161.4	151.7	179.0	158.1	146.2	150.3	180.7	168.4	171.7	145.4	138.8	142.9	148.6	188.9	167.2	161.6	140.0	168.6	159.2	196.7	146.9	172.2	214.8	165.2
Informação, Informática e Comun. / Inform., Computers, and Commun.	118.5	114.6	133.9	94.9	117.4	144.5	115.7	98.3	143.1	141.3	116.2	118.9	200.3	120.1	102.6	136.6	92.4	155.3	132.8	127.7	115.1	133.6	103.6	131.8
Restantes Serviços / Remaining Services	84.6	61.6	89.1	101.3	83.7	71.9	87.3	66.4	83.0	118.9	89.4	102.9	96.2	78.1	85.6	116.2	102.1	97.7	116.9	86.1	113.9	96.6	95.5	107.0
Total	166.2	145.6	162.1	156.8	171.3	173.2	185.6	216.4	251.2	215.8	181.7	163.0	176.4	160.7	159.1	173.3	167.2	193.1	194.8	229.0	251.2	216.5	195.5	171.7

Gráfico / Graph 5.8.  
Saldo  
Balance

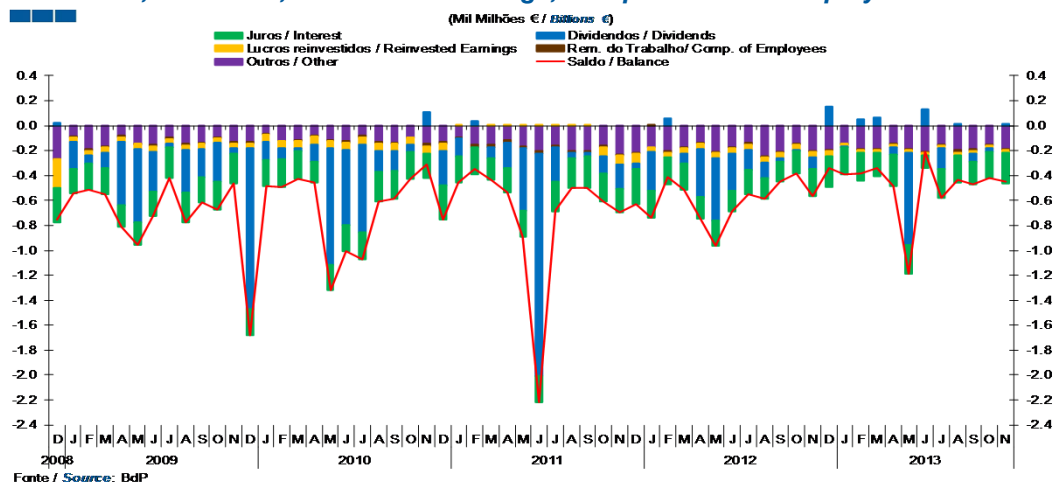


	2011		2012		2013		2013		2013		2013		2013		2013		2013		2013					
	D	J	F	M	A	M	J	J	A	S	O	N	D	J	F	M	A	M	J	J	A	S	O	N
Transportes / Transports	161	159	143	167	191	190	180	241	222	154	178	152	155	170	151	196	198	213	203	221	218	185	187	177
Viagens e Turismo / Travel	343	224	221	244	396	437	434	831	998	661	545	295	374	238	232	296	381	526	487	882	1,055	708	574	319
Outro Forn. Por empresas / Other business services	147	78	105	89	66	71	103	96	101	58	61	58	71	122	94	84	66	103	80	143	73	97	150	102
Informação, Informática e Comun. / Inform., Computers, and Commun.	11	9	21	-4	14	30	9	-1	24	25	11	12	48	15	2	21	-8	38	20	23	10	18	3	18
Restantes Serviços / Remaining Services	-25	-70	-11	2	-26	-47	-16	-63	-22	18	-18	3	-6	-32	-17	17	2	-3	20	-21	18	-4	-6	9
Saldo / Balance	637	400	478	497	640	681	712	1,103	1,323	915	778	520	640	514	462	615	640	876	811	1,248	1,373	1,004	908	625

Nota: A série Restantes Serviços inclui Construção, Financeiros, Seguros, Direitos de Utilização, Nat. Pessoal, Cult. e Recreat., Operações Governamentais.  
Note: Remaining Services series includes Construction, Financial, Insurance, Royalties and Licence Fees, Personal, Cultural and Recreational Services, Government Services.

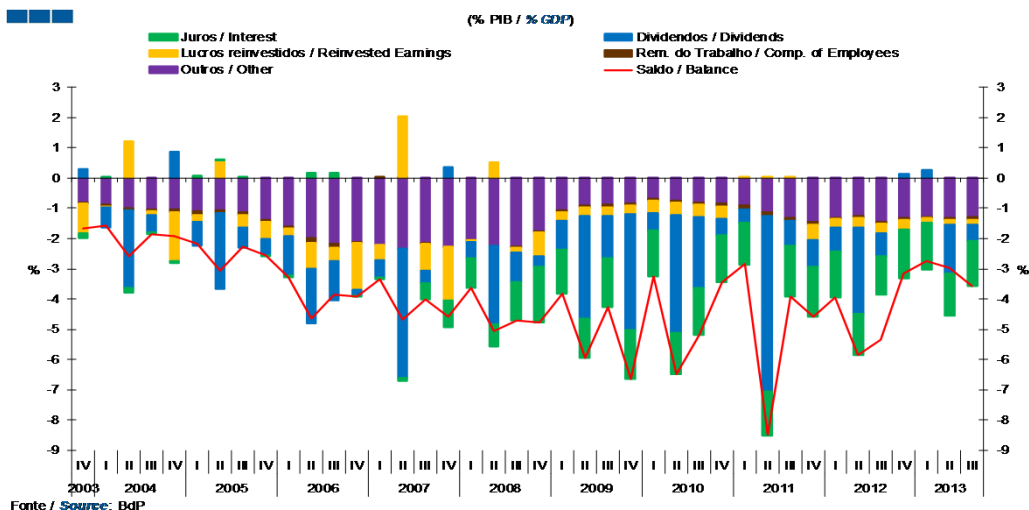
## 6. Balança de Rendimentos / Income Account

Gráfico / Graph 6.1.  
Juros, Dividendos, Lucros Reinvestidos, Rend. do Trabalho e Outros  
Interest, Dividends, Reinvested Earnings, Compensation of Employees and Others



	2011					2012					2013													
	D	J	F	M	A	M	J	J	A	S	O	N	D	J	F	M	A	M	J	J	A	S	O	N
Remunerações do Trabalho / Compensation of Employees	0.0	0.0	0.0	0.0	0.0	0.0	0.0	0.0	0.0	0.0	0.0	0.0	0.0	0.0	0.0	0.0	0.0	0.0	0.0	0.0	0.0	0.0	0.0	0.0
Dividendos / Dividends	0.0	-0.3	0.1	-0.1	-0.4	-0.5	-0.3	-0.2	-0.1	0.0	0.0	-0.1	0.2	0.0	0.1	0.1	-0.1	-0.7	0.1	-0.2	0.0	-0.1	0.0	0.0
Lucros Reinvestidos / Reinvested Earnings	-0.1	0.0	0.0	0.0	0.0	0.0	0.0	0.0	0.0	0.0	0.0	0.0	0.0	0.0	0.0	0.0	0.0	0.0	0.0	0.0	0.0	0.0	0.0	0.0
Juros / Interest	-0.3	-0.2	-0.2	-0.2	-0.2	-0.2	-0.2	-0.2	-0.2	-0.2	-0.2	-0.2	-0.2	-0.2	-0.2	-0.2	-0.2	-0.2	-0.2	-0.2	-0.2	-0.2	-0.2	-0.2
Outros / Other	-0.2	-0.2	-0.2	-0.2	-0.1	-0.2	-0.2	-0.1	-0.2	-0.2	-0.1	-0.2	-0.2	-0.1	-0.2	-0.2	-0.1	-0.2	-0.2	-0.1	-0.2	-0.2	-0.1	-0.2
Saldo / Balance	-0.6	-0.7	-0.4	-0.5	-0.7	-1.0	-0.7	-0.5	-0.6	-0.4	-0.4	-0.6	-0.3	-0.4	-0.4	-0.3	-0.5	-1.2	-0.2	-0.6	-0.4	-0.5	-0.4	-0.4

Gráfico / Graph 6.2.  
Juros, Dividendos, Lucros Reinvestidos, Rend. do Trabalho e Outros  
Interest, Dividends, Reinvested Earnings, Compensation of Employees and Others



	2008				2009				2010				2011				2012				2013			
	IV	I	II	III	IV	I	II	III	IV	I	II	III	IV	I	II	III	IV	I	II	III	IV	I	II	III
Remunerações do Trabalho / Compensation of Employees	0.0	0.0	0.0	0.0	0.0	-0.1	-0.1	-0.1	-0.1	0.0	-0.1	-0.1	-0.1	-0.1	-0.1	-0.1	-0.1	0.0	-0.1	-0.1	-0.1	0.0	-0.1	-0.1
Dividendos / Dividends	0.4	-0.6	-2.6	-1.0	-0.3	-1.0	-3.4	-1.4	-3.9	-0.6	-3.9	-2.3	-0.5	-0.5	-5.8	-0.8	-0.9	-0.8	-2.9	-0.8	0.1	0.3	-1.6	-0.5
Lucros Reinvestidos / Reinvested Earnings	-1.8	-0.1	0.5	-0.1	-0.8	-0.3	-0.3	-0.3	-0.3	-0.4	-0.4	-0.4	-0.4	0.0	0.0	0.0	-0.5	-0.3	-0.3	-0.3	-0.3	-0.2	-0.2	-0.2
Juros / Interest	-0.9	-1.0	-0.7	-1.2	-1.9	-1.5	-1.3	-1.6	-1.6	-1.5	-1.4	-1.6	-1.6	-1.4	-1.4	-1.7	-1.7	-1.5	-1.3	-1.3	-1.6	-1.6	-1.4	-1.5
Outros / Other	-2.3	-2.0	-2.2	-2.3	-1.8	-1.1	-0.9	-0.9	-0.8	-0.7	-0.7	-0.8	-0.8	-0.9	-1.1	-1.3	-1.4	-1.3	-1.3	-1.4	-1.3	-1.3	-1.3	-1.3
Saldo / Balance	-4.6	-3.6	-5.1	-4.7	-4.8	-3.8	-5.9	-4.3	-6.6	-3.3	-6.5	-5.2	-3.5	-2.9	-8.5	-3.9	-4.6	-3.9	-5.8	-5.4	-3.2	-2.7	-3.0	-3.6

Nota: A série Restantes Serviços inclui Construção, Financeiros, Seguros, Direitos de Utilização, Nat. Pessoal, Cult. e Recreat., Operações Governamentais.  
Note: Remaining Services series includes Construction, Financial, Insurance, Royalties and Licence Fees, Personal, Cultural and Recreational Services, Government Services.