

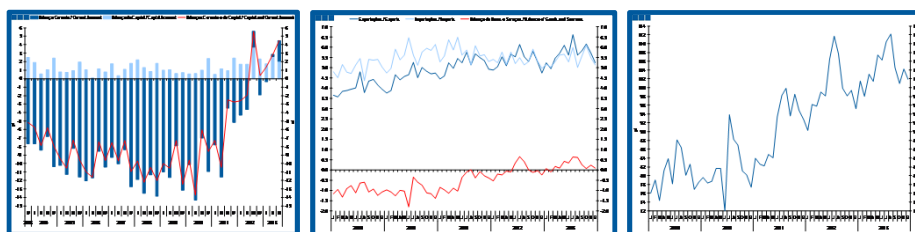
Estatísticas Temáticas de Conjuntura

Short-term Thematic Statistics

- Nº 2/2014 -

21 de fevereiro de 2014

February, 21, 2014



Balanças Corrente e de Capital

Current and Capital Accounts

- Dezembro de 2013 -

- December, 2013 -

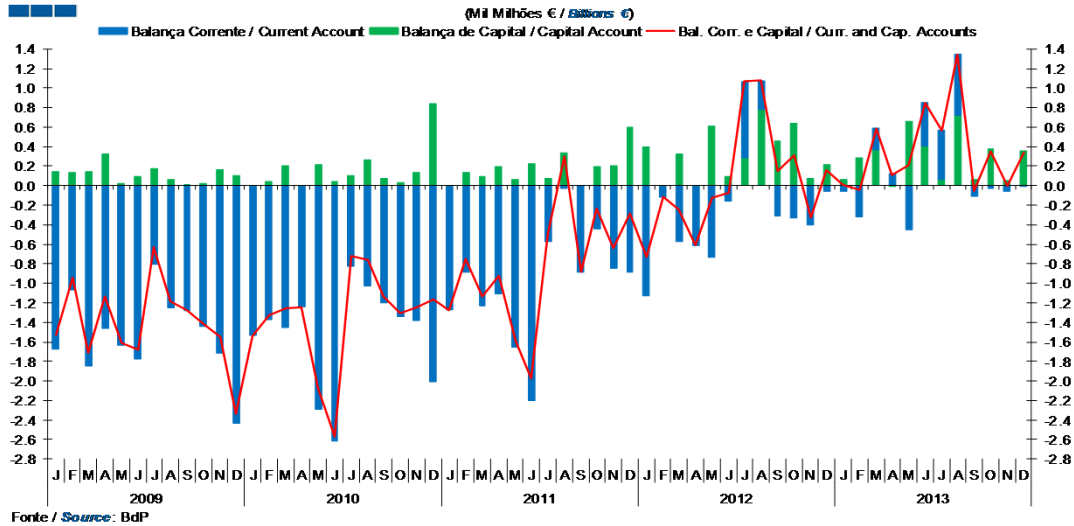
Fonte / *Source*: Banco de Portugal

Índice / *Index*

	Página / <i>Page</i>
1. Balanças Corrente e de Capital / <i>Capital and Current Accounts</i>	
Balanças Corrente e de Capital / <i>Current and Capital Accounts</i>	3
2. Balança Corrente / <i>Current Account</i>	
Bens e Serviços, Rendimentos, Transferências Correntes / <i>Goods and Services, Income, Current Transfers</i>	4
3. Balanças de Bens e Serviços / <i>Goods and Services Accounts</i>	
Exportações e Importações / <i>Exports and Imports</i>	5-6
Bens e Serviços / <i>Goods and Services</i>	7
4. Balança de Bens / <i>Goods Account</i>	
Exportações e Importações / <i>Exports and Imports</i>	8
Variação Homóloga / <i>Annual Change</i>	9
Taxa de Cobertura / <i>Coverage Rate</i>	9
5. Balança de Serviços / <i>Services Account</i>	
Exportações e Importações / <i>Exports and Imports</i>	10
Variação Homóloga / <i>Annual Change</i>	11
Taxa de Cobertura / <i>Coverage Rate</i>	11
Variação Homóloga das Exportações / <i>Exports Annual Change</i>	12
Variação Homóloga das Importações / <i>Imports Annual Change</i>	12
Taxa de Cobertura / <i>Coverage Rate</i>	13
Saldo / <i>Balance</i>	13
6. Balança de Rendimentos / <i>Income Account</i>	
Juros, Dividendos, Lucros Reinvestidos, Rend. do Trabalho e Outros / <i>Interest, Dividends, Reinvested Earnings, Compensation of Employees and Others</i>	14

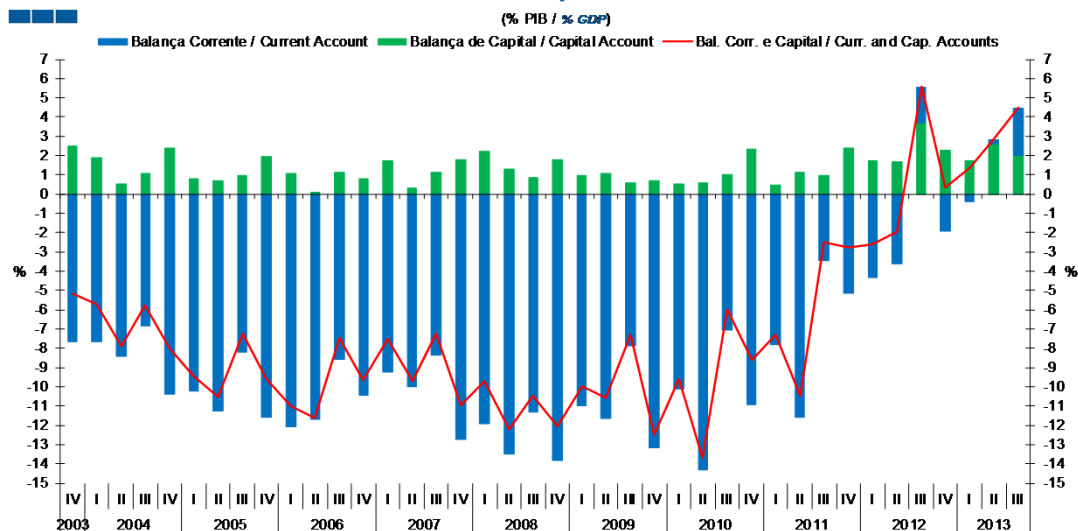
1. Balanças Corrente e de Capital / Capital and Current Accounts

Gráfico / Graph 1.1.
 Balanças Corrente e de Capital
 Current and Capital Accounts



	2012												2013											
	J	F	M	A	M	J	J	A	S	O	N	D	J	F	M	A	M	J	J	A	S	O	N	D
Balança Corrente / Current Account	-1.1	-0.1	-0.6	-0.6	-0.7	-0.2	0.8	0.3	-0.3	-0.3	-0.4	-0.1	-0.1	-0.3	0.2	0.1	-0.5	0.4	0.5	0.6	-0.1	0.0	-0.1	0.0
Balança de Capital / Capital Account	0.4	0.0	0.3	0.0	0.6	0.1	0.3	0.8	0.5	0.6	0.1	0.2	0.1	0.3	0.4	0.0	0.7	0.4	0.1	0.7	0.1	0.4	0.1	0.4
Bal. Corr. e Cap. / Curr. and Cap. Accounts	-0.7	-0.1	-0.2	-0.6	-0.1	-0.1	1.1	1.1	0.1	0.3	-0.3	0.2	0.0	0.0	0.6	0.1	0.2	0.8	0.6	1.3	0.0	0.4	0.0	0.3

Gráfico / Graph 1.2.
 Balanças Corrente e de Capital
 Current and Capital Accounts



	2008				2009				2010				2011				2012				2013		
	IV	I	II	III	IV	I	II	III	IV	I	II	III	IV	I	II	III	IV	I	II	III	I	II	III
Balança Corrente / Current Account	-13.8	-11.0	-11.6	-7.9	-13.2	-10.1	-14.3	-7.0	-10.9	-7.8	-11.6	-3.5	-5.2	-4.3	-3.6	1.9	-1.9	-0.4	0.3	2.4			
Balança de Capital / Capital Account	1.8	1.0	1.1	0.6	0.7	0.5	0.6	1.0	2.3	0.5	1.1	0.9	2.4	1.7	1.7	3.7	2.3	1.8	2.6	2.0			
Bal. Corr. e Cap. / Curr. and Cap. Accounts	-12.0	-10.0	-10.6	-7.3	-12.5	-9.6	-13.7	-6.0	-8.6	-7.3	-10.5	-2.5	-2.7	-2.6	-2.0	5.6	0.3	1.4	2.9	4.5			

2. Balança Corrente / Current Account

Gráfico / Graph 2.1.
Bens e Serviços, Rendimentos, Transferências Correntes
Goods and Services, Income, Current Transfers

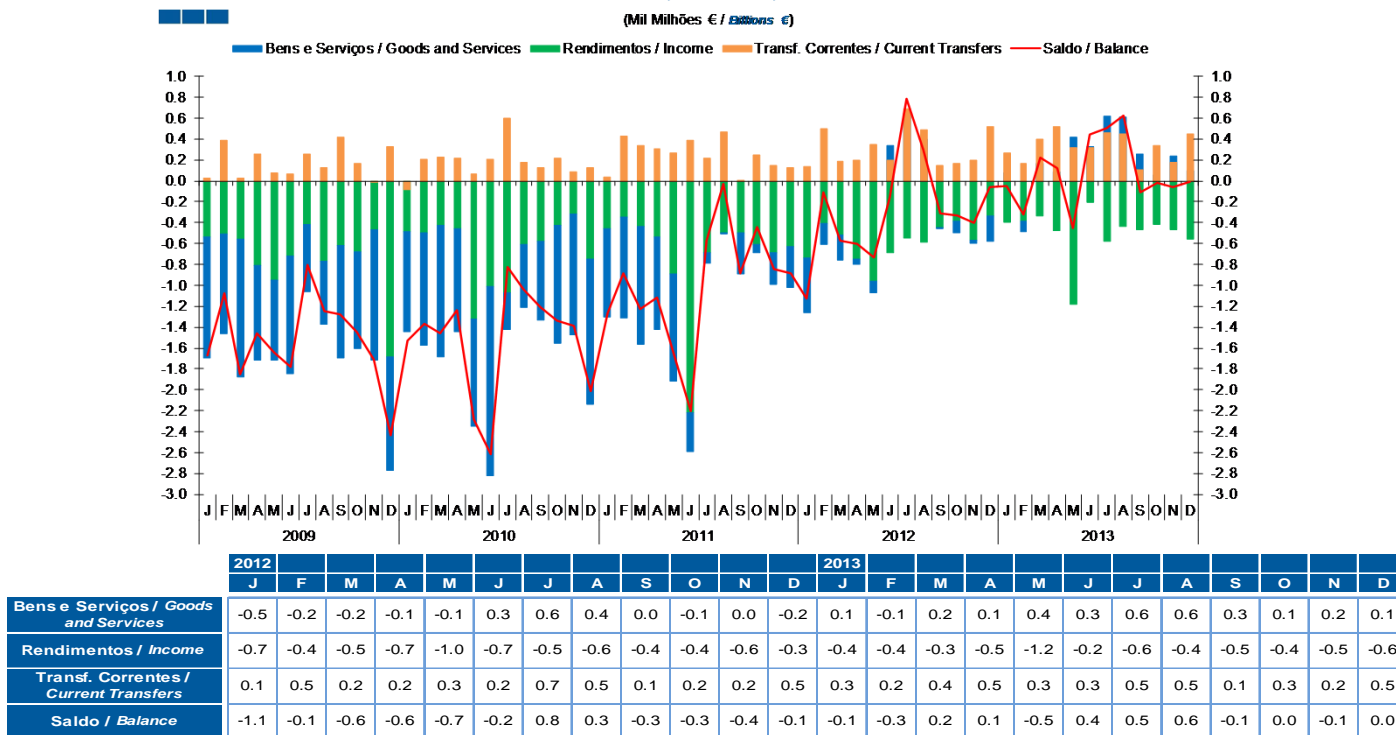
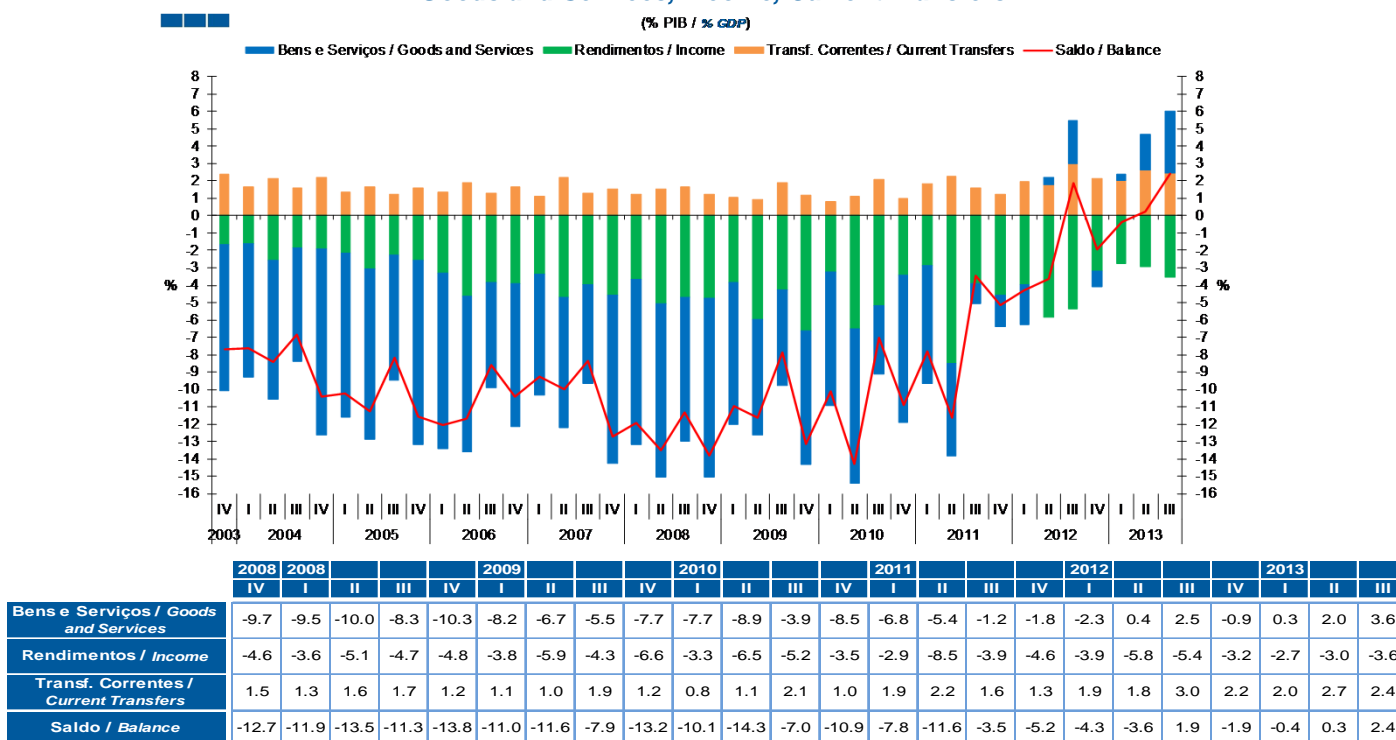
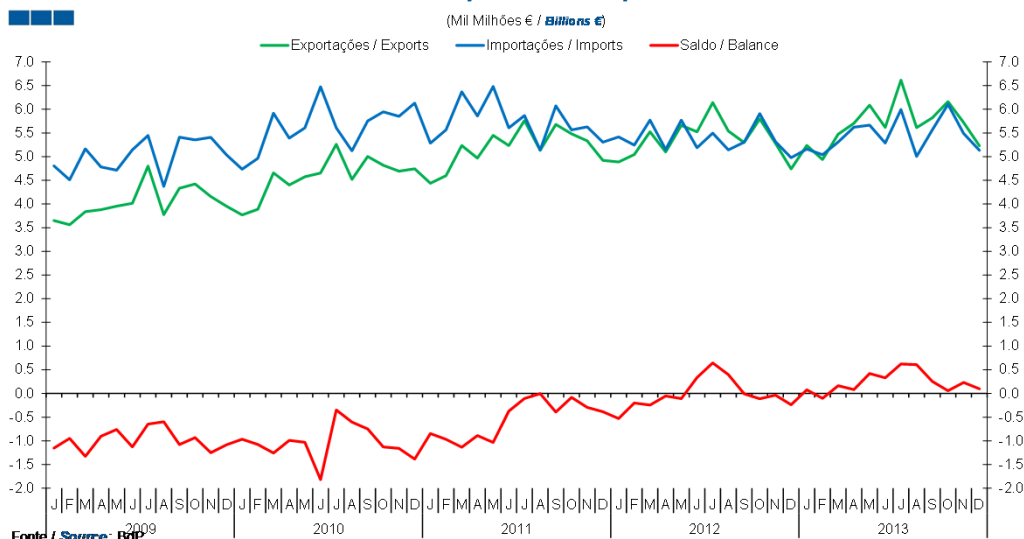


Gráfico / Graph 2.2.
Bens e Serviços, Rendimentos, Transferências Correntes
Goods and Services, Income, Current Transfers



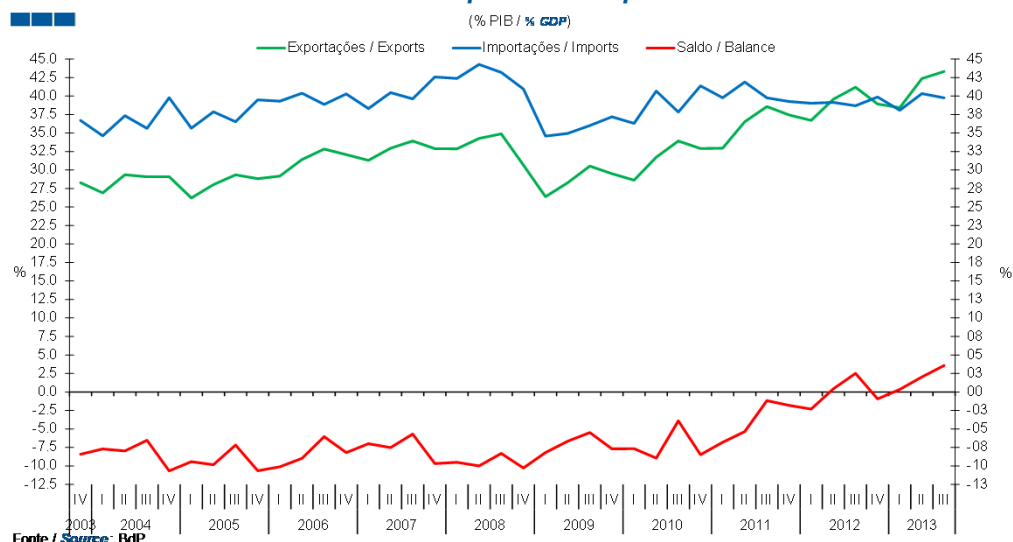
3. Balanços de Bens e Serviços / Goods and Services Accounts

Gráfico / Graph 3.1.
 Exportações e Importações
 Exports and Imports



	2012												2013											
	J	F	M	A	M	J	J	A	S	O	N	D	J	F	M	A	M	J	J	A	S	O	N	D
Exportações / Exports	4.9	5.0	5.5	5.1	5.7	5.5	6.1	5.5	5.3	5.8	5.3	4.7	5.2	4.9	5.5	5.7	6.1	5.6	6.6	5.8	6.2	5.7	5.2	
Importações / Imports	5.4	5.2	5.8	5.2	5.8	5.2	5.5	5.1	5.3	5.9	5.3	5.0	5.2	5.0	5.3	5.6	5.7	5.3	6.0	5.0	5.6	6.1	5.5	5.1
Saldo / Balance	-0.5	-0.2	-0.2	-0.1	-0.1	0.3	0.6	0.4	0.0	-0.1	0.0	-0.2	0.1	-0.1	0.2	0.1	0.4	0.3	0.6	0.6	0.3	0.1	0.2	0.1

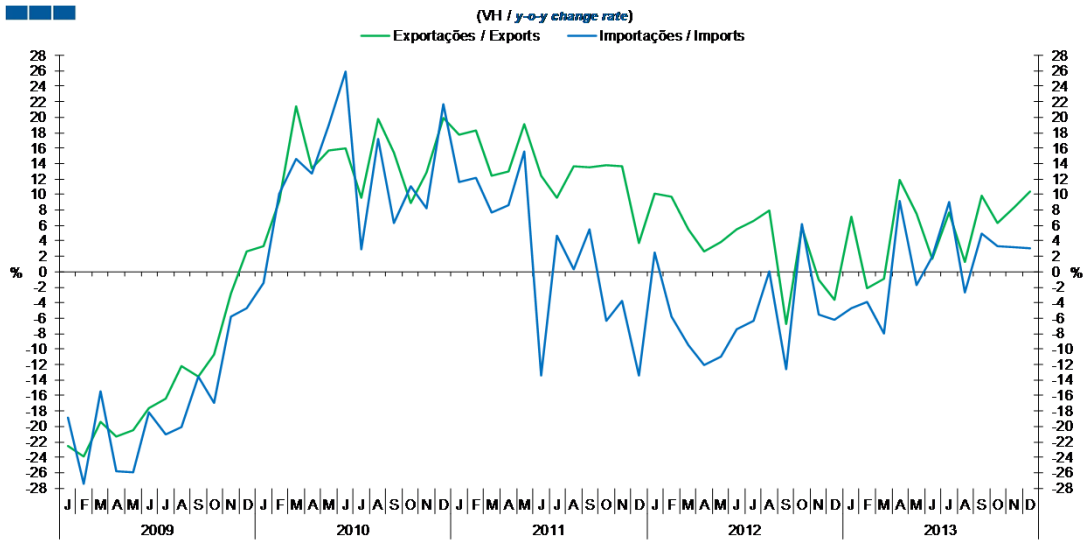
Gráfico / Graph 3.2.
 Exportações e Importações
 Exports and Imports



	2008				2009				2010				2011				2012				2013			
	IV	I	II	III	IV	I	II	III	IV	I	II	III	IV	I	II	III	IV	I	II	III	IV	I	II	III
Exportações / Exports	32.9	32.9	34.3	34.9	30.7	26.4	28.3	30.5	29.5	28.6	31.7	33.9	32.9	33.0	36.5	38.6	37.4	36.7	39.6	41.2	38.9	38.4	42.4	43.3
Importações / Imports	42.6	42.4	44.3	43.2	40.9	34.6	34.9	36.0	37.2	36.3	40.7	37.8	41.4	39.8	41.9	39.8	39.3	39.0	39.1	38.7	39.9	38.1	40.3	39.8
Saldo / Balance	-9.7	-9.5	-10.0	-8.3	-10.3	-8.2	-6.7	-5.5	-7.7	-7.7	-8.9	-3.9	-8.5	-6.8	-5.4	-1.2	-1.8	-2.3	0.4	2.5	-0.9	0.3	2.0	3.6

3. Balanças de Bens e Serviços / Goods and Services Accounts

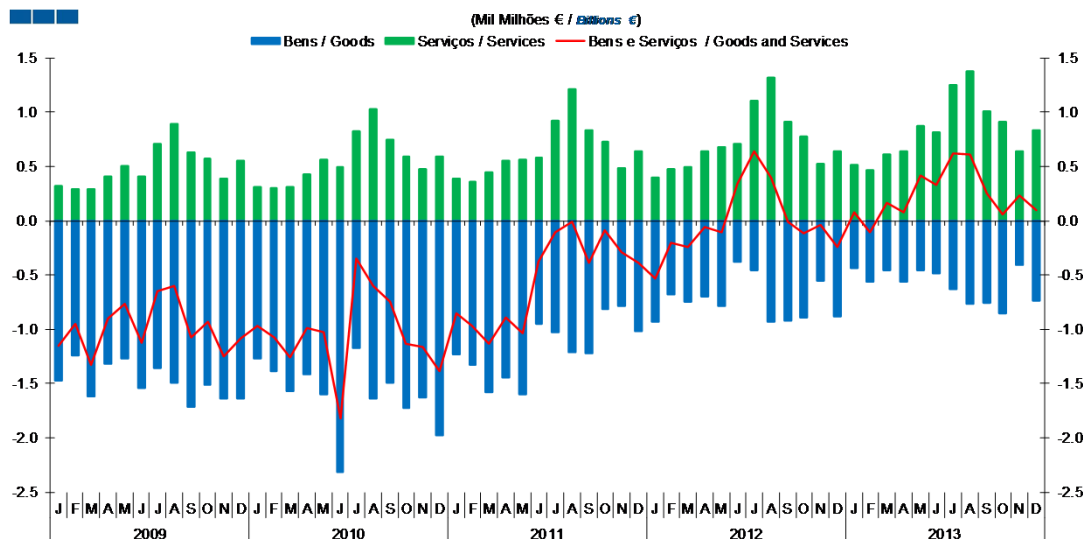
Gráfico / Graph 3.3.
Exportações e Importações
Exports and Imports



	2012				2013																			
	J	F	M	A	M	J	J	A	S	O	N	D	J	F	M	A	M	J	J	A	S	O	N	D
Exportações / Exports	10.1	9.7	5.5	2.6	3.9	5.5	6.6	7.9	-6.7	5.8	-1.0	-3.7	7.2	-2.1	-0.9	11.9	7.5	1.7	7.7	1.3	9.8	6.3	8.3	10.3
Importações / Imports	2.5	-5.8	-9.4	-12.0	-11.0	-7.5	-6.3	0.1	-12.6	6.2	-5.6	-6.2	-4.7	-3.9	-8.0	9.1	-1.8	1.9	9.0	-2.7	4.9	3.3	3.2	3.1

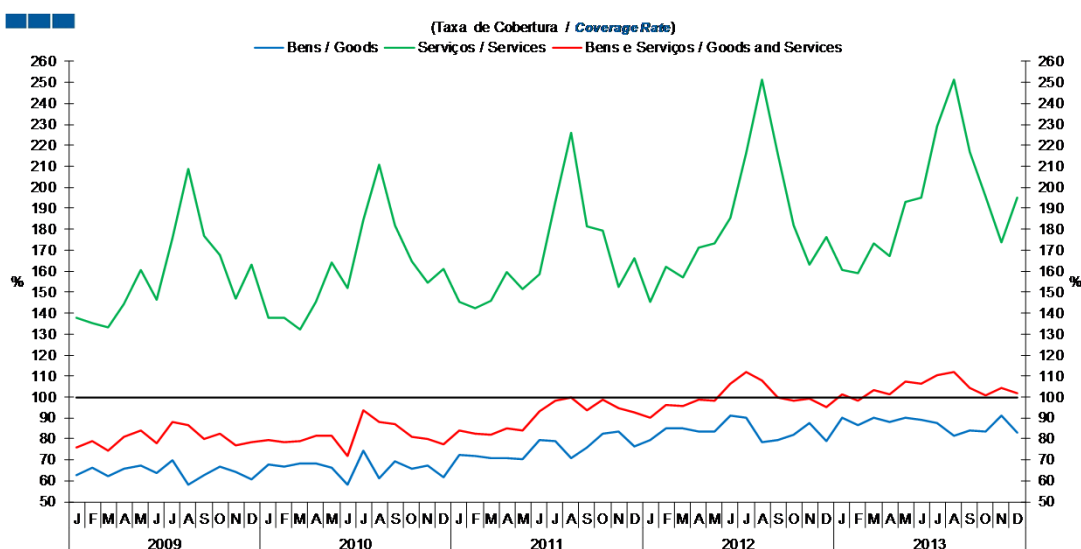
3. Balanças de Bens e Serviços / Goods and Services Accounts

Gráfico / Graph 3.4.
Bens e Serviços
Goods and Services



	2012												2013											
	J	F	M	A	M	J	J	A	S	O	N	D	J	F	M	A	M	J	J	A	S	O	N	D
Serviços / Services	0.4	0.5	0.5	0.6	0.7	0.7	1.1	1.3	0.9	0.8	0.5	0.6	0.5	0.5	0.6	0.6	0.9	0.8	1.2	1.4	1.0	0.9	0.6	0.8
Bens / Goods	-0.9	-0.7	-0.7	-0.7	-0.8	-0.4	-0.5	-0.9	-0.9	-0.9	-0.6	-0.9	-0.4	-0.6	-0.5	-0.6	-0.5	-0.5	-0.6	-0.8	-0.8	-0.9	-0.4	-0.7
Bens e Serviços / Goods and Services	-0.5	-0.2	-0.2	-0.1	-0.1	0.3	0.6	0.4	0.0	-0.1	0.0	-0.2	0.1	-0.1	0.2	0.1	0.4	0.3	0.6	0.6	0.3	0.1	0.2	0.1

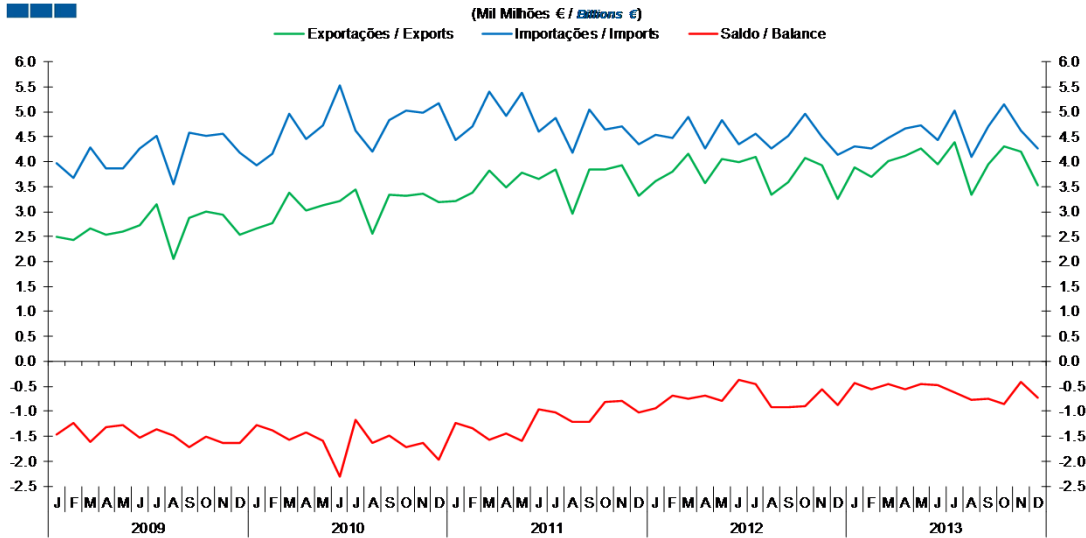
Gráfico / Graph 3.5.
Bens e Serviços
Goods and Services



	2012												2013											
	J	F	M	A	M	J	J	A	S	O	N	D	J	F	M	A	M	J	J	A	S	O	N	D
Serviços / Services	145.6	162.1	156.8	171.3	173.2	185.6	216.4	251.2	215.8	181.7	163.0	176.4	160.8	159.2	173.3	167.3	193.2	194.9	229.0	251.4	216.7	195.5	173.9	195.2
Bens / Goods	79.5	84.8	84.8	83.7	83.7	91.4	89.9	78.3	79.6	82.1	87.6	78.8	89.9	86.8	89.9	88.0	90.3	89.2	87.5	81.3	84.0	83.5	91.2	82.8
Bens e Serviços / Goods and Services	90.2	96.2	95.8	99.0	98.1	106.5	111.7	107.7	99.9	98.1	99.3	95.2	101.5	98.0	103.1	101.5	107.4	106.3	110.4	112.2	104.5	100.9	104.2	101.9

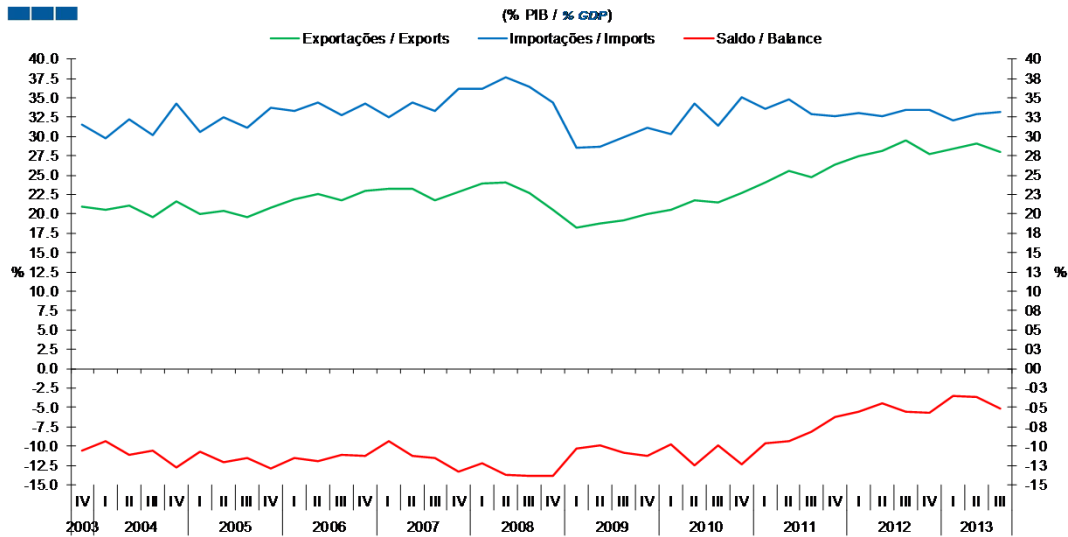
4. Balança de Bens / Goods Account

Gráfico / Graph 4.1.
 Exportações e Importações
 Exports and Imports



	2012												2013											
	J	F	M	A	M	J	J	A	S	O	N	D	J	F	M	A	M	J	J	A	S	O	N	D
Exportações / Exports	3.6	3.8	4.2	3.6	4.0	4.0	4.1	3.3	3.6	4.1	3.9	3.3	3.9	3.7	4.0	4.1	4.3	4.0	4.4	3.3	4.0	4.3	4.2	3.5
Importações / Imports	4.5	4.5	4.9	4.3	4.8	4.4	4.5	4.3	4.5	5.0	4.5	4.1	4.3	4.3	4.5	4.7	4.7	4.4	5.0	4.1	4.7	5.2	4.6	4.3
Saldo / Balance	-0.9	-0.7	-0.7	-0.7	-0.8	-0.4	-0.5	-0.9	-0.9	-0.9	-0.6	-0.9	-0.4	-0.6	-0.5	-0.6	-0.5	-0.5	-0.6	-0.8	-0.8	-0.9	-0.4	-0.7

Gráfico / Graph 4.2.
 Exportações e Importações
 Exports and Imports



	2008				2009				2010				2011				2012				2013			
	IV	I	II	III	IV	I	II	III	IV	I	II	III	IV	I	II	III	IV	I	II	III	IV	I	II	III
Exportações / Exports	22.8	23.9	24.1	22.6	20.5	18.2	18.8	19.1	19.9	20.5	21.8	21.5	22.8	24.1	25.5	24.8	26.4	27.4	28.2	29.5	27.7	28.5	29.0	28.0
Importações / Imports	36.2	36.2	37.7	36.4	34.3	28.5	28.6	29.9	31.2	30.3	34.2	31.4	35.1	33.6	34.8	32.9	32.6	33.0	32.7	33.4	33.4	32.0	32.9	33.2
Saldo / Balance	-13.3	-12.2	-13.6	-13.8	-13.8	-10.3	-9.8	-10.8	-11.3	-9.8	-12.4	-9.9	-12.3	-9.6	-9.3	-8.1	-6.2	-5.6	-4.5	-5.6	-5.7	-3.6	-3.6	-5.1

4. Balança de Bens / Goods Account

Gráfico / Graph 4.3.
 Variação Homóloga
 Annual Change

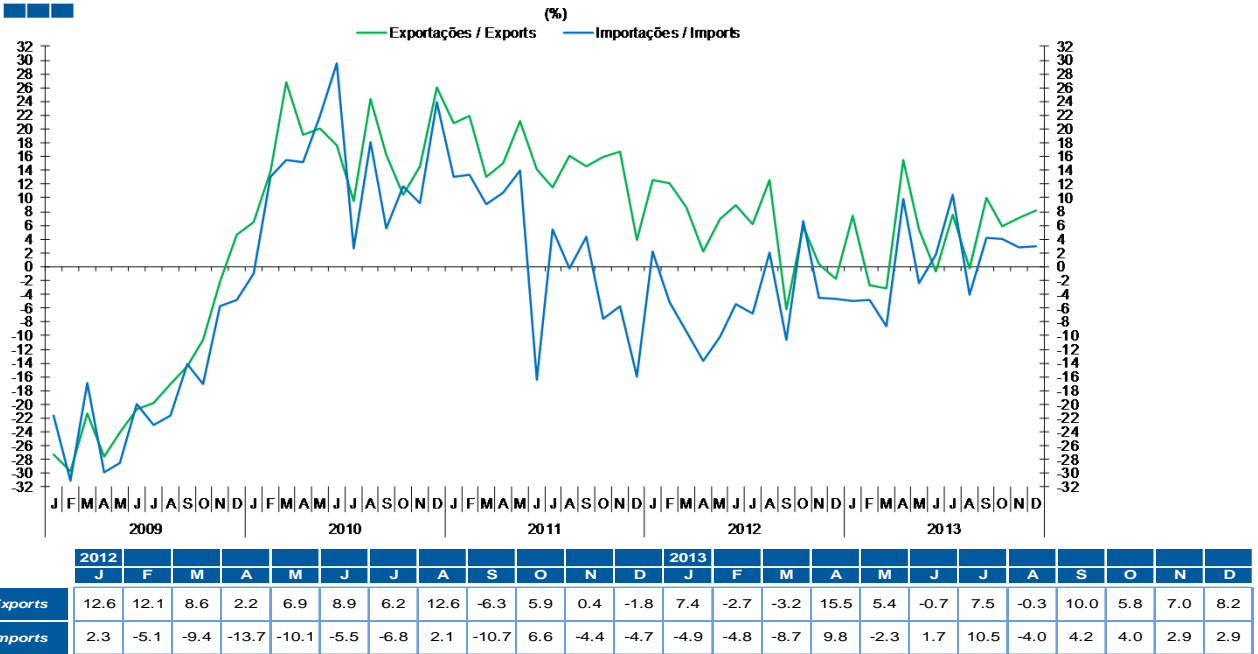
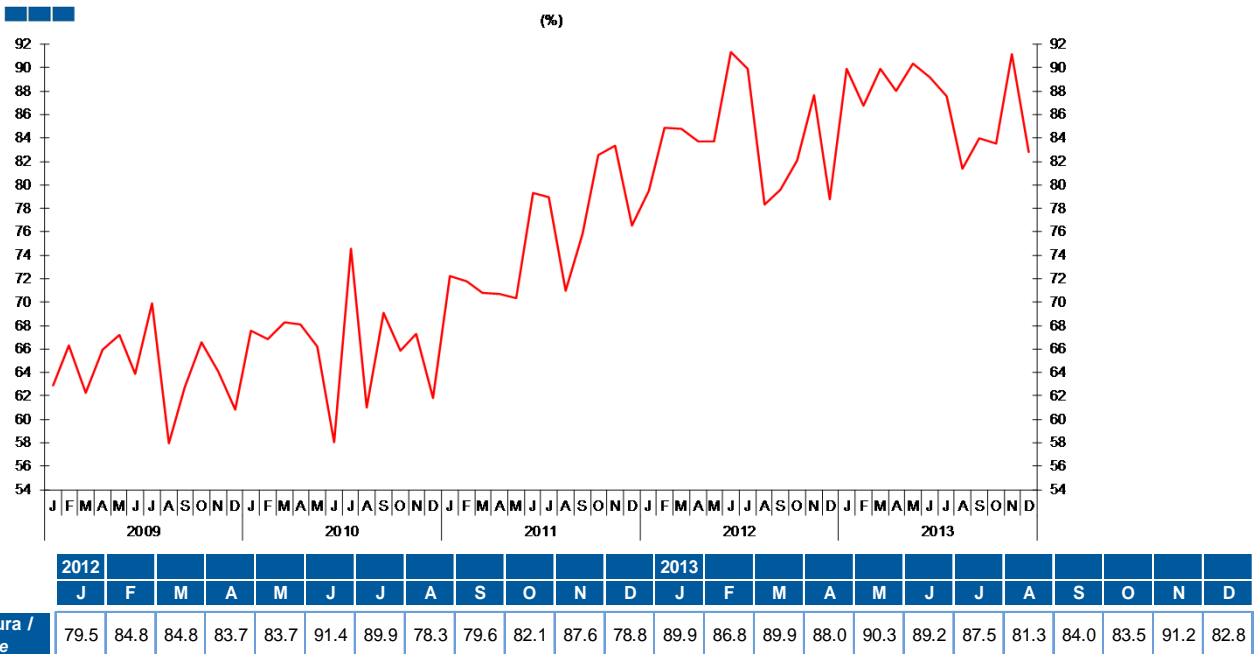
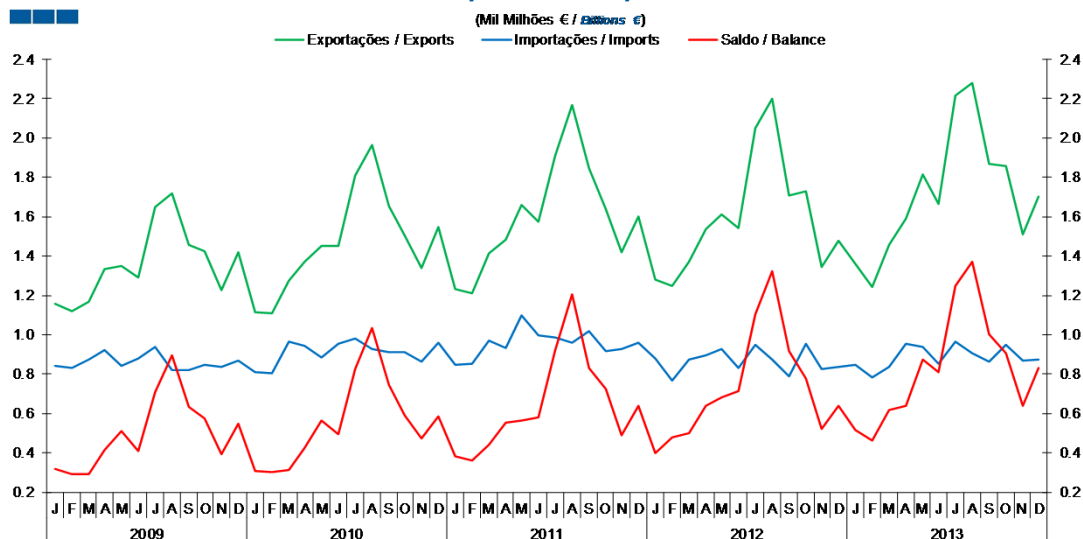


Gráfico / Graph 4.4.
 Taxa de Cobertura
 Coverage Rate



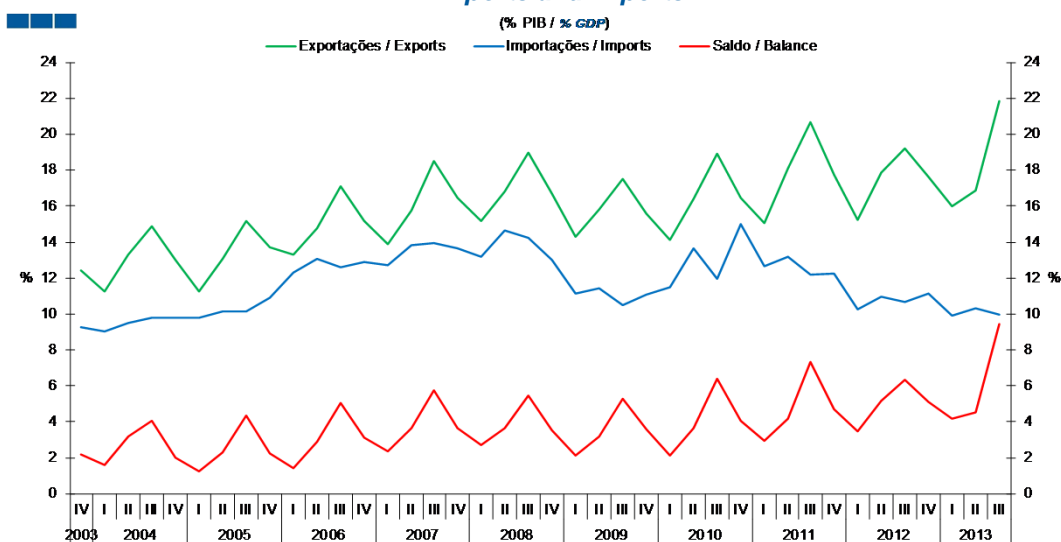
5. Balança de Serviços / Services Account

Gráfico / Graph 5.1.
 Exportações e Importações
 Exports and Imports



	2012												2013											
	J	F	M	A	M	J	J	A	S	O	N	D	J	F	M	A	M	J	J	A	S	O	N	D
Exportações / Exports	1.3	1.2	1.4	1.5	1.6	1.5	2.1	2.2	1.7	1.7	1.3	1.5	1.4	1.2	1.5	1.6	1.8	1.7	2.2	2.3	1.9	1.9	1.5	1.7
Importações / Imports	0.9	0.8	0.9	0.9	0.9	0.8	0.9	0.9	0.8	1.0	0.8	0.8	0.8	0.8	0.8	1.0	0.9	0.9	1.0	0.9	0.9	1.0	0.9	0.9
Saldo / Balance	0.4	0.5	0.5	0.6	0.7	0.7	1.1	1.3	0.9	0.8	0.5	0.6	0.5	0.5	0.6	0.6	0.9	0.8	1.2	1.4	1.0	0.9	0.6	0.8

Gráfico / Graph 5.2.
 Exportações e Importações
 Exports and Imports



	2008				2009				2010				2011				2012				2013			
	IV	I	II	III	IV	I	II	III	IV	I	II	III	IV	I	II	III	IV	I	II	III	IV	I	II	III
Exportações / Exports	16.5	15.2	16.8	19.0	16.7	14.3	15.8	17.5	15.6	14.1	16.4	18.9	16.5	15.1	18.1	20.7	17.8	15.3	17.9	19.2	17.6	16.0	16.8	21.8
Importações / Imports	13.7	13.2	14.6	14.3	13.0	11.2	11.4	10.5	11.1	11.5	13.6	12.0	15.0	12.6	13.2	12.2	12.3	10.3	11.0	10.7	11.1	9.9	10.3	10.0
Saldo / Balance	3.6	2.7	3.6	5.5	3.5	2.2	3.2	5.3	3.6	2.1	3.6	6.4	4.1	2.9	4.2	7.3	4.7	3.5	5.2	6.4	5.1	4.2	4.5	9.4

5. Balança de Serviços / Services Account

Gráfico / Graph 5.3.
 Variação Homóloga
 Annual Change

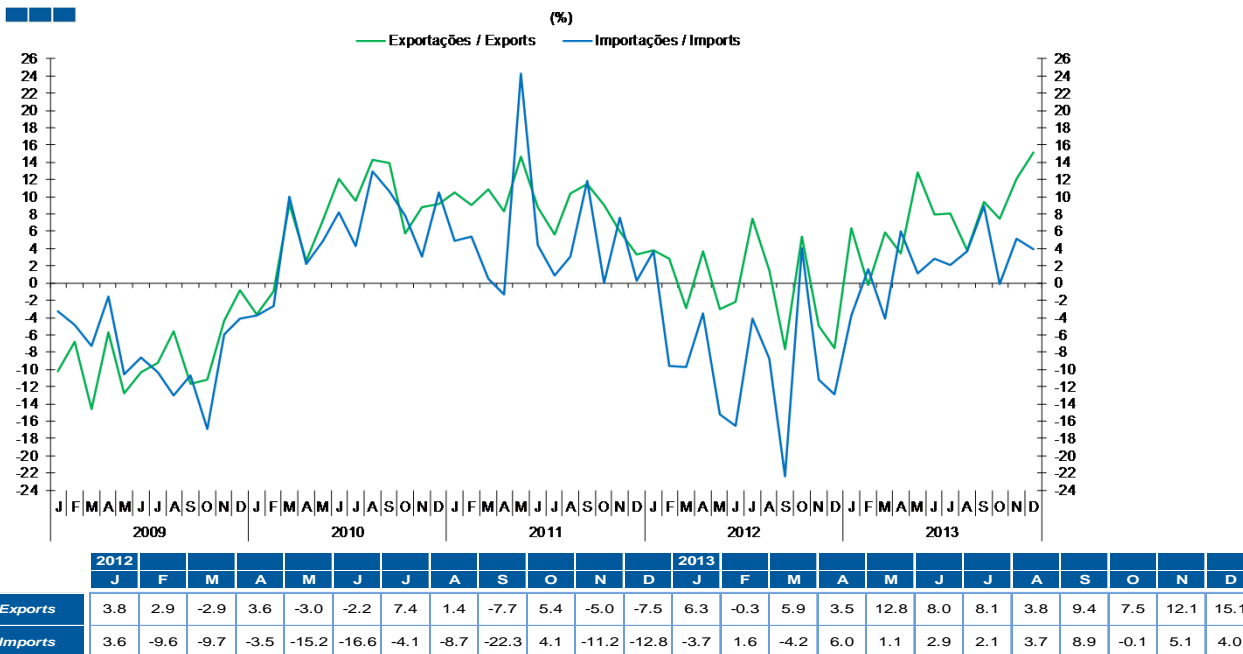
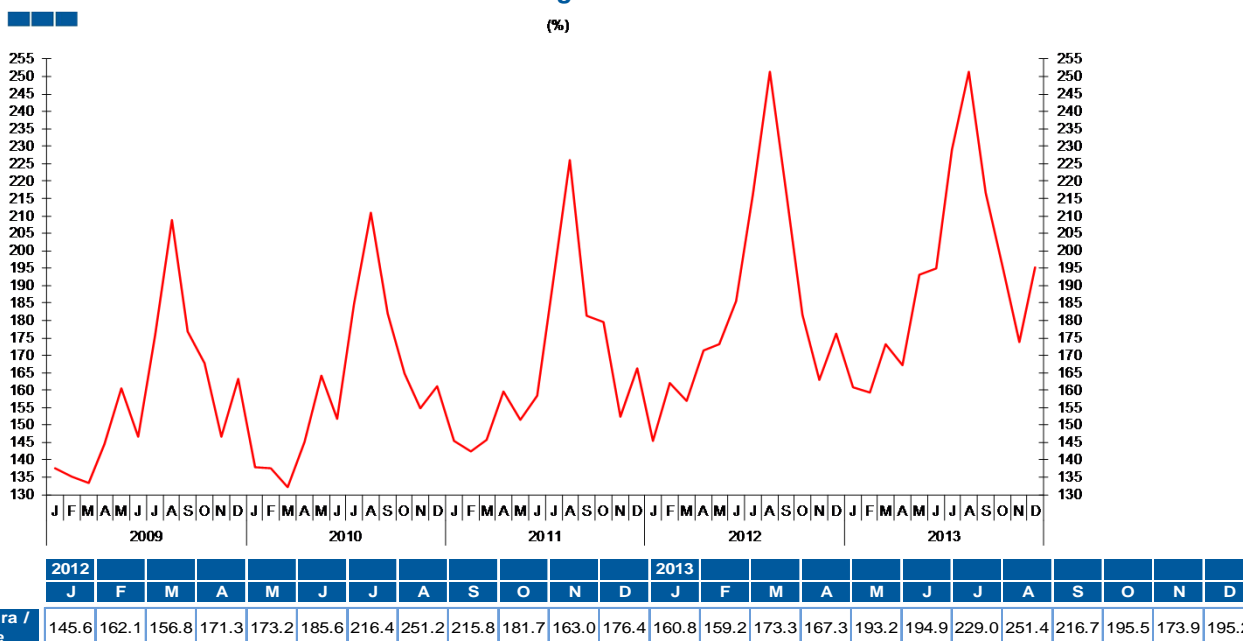
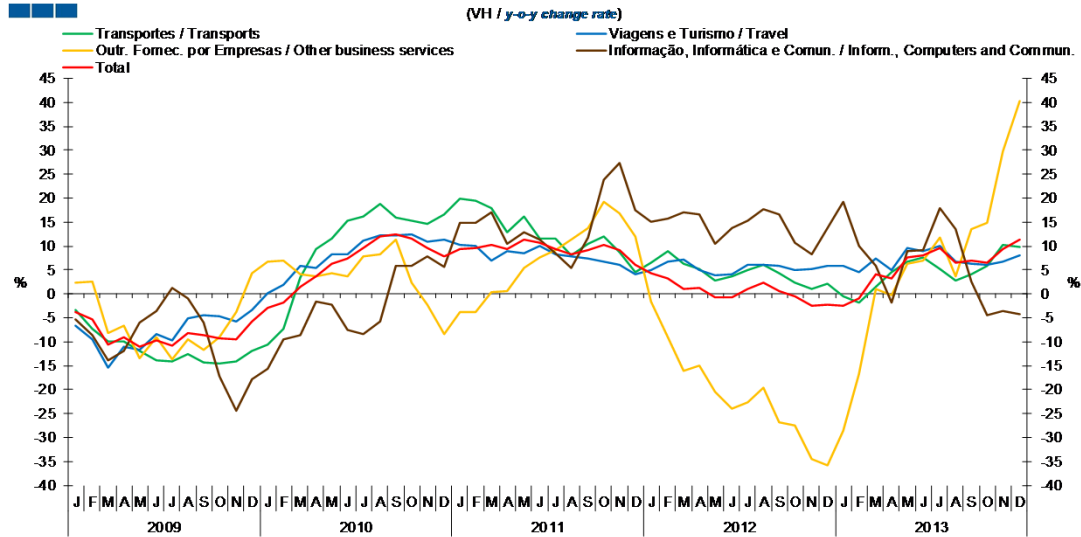


Gráfico / Graph 5.4.
 Taxa de Cobertura
 Coverage Rate



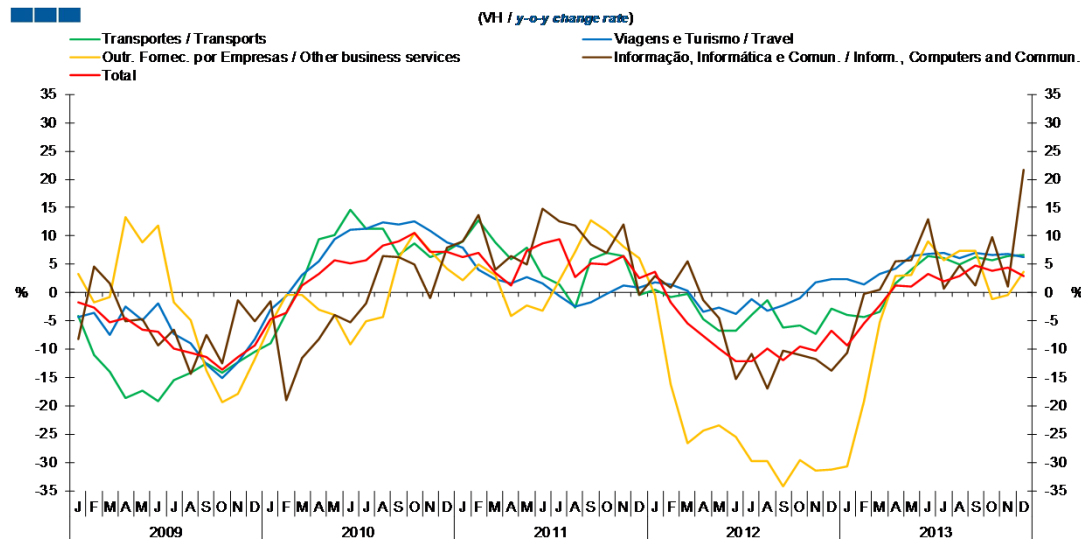
5. Balança de Serviços / Services Account

Gráfico / Graph 5.5.
 Variação Homóloga das Exportações
 Exports Annual Change



	2012												2013											
	J	F	M	A	M	J	J	A	S	O	N	D	J	F	M	A	M	J	J	A	S	O	N	D
Transportes / Transports	6.5	8.9	6.2	5.2	2.8	3.6	4.9	6.2	4.3	2.4	1.1	2.2	-0.6	-1.7	1.5	4.5	6.7	7.7	5.3	2.7	4.1	5.9	10.3	9.8
Viagens e Turismo / Travel	5.0	6.8	7.2	4.9	3.8	4.1	6.2	6.1	5.8	4.9	5.1	5.8	6.0	4.6	7.3	5.0	9.6	8.9	10.0	6.8	6.4	6.2	6.7	8.0
Outro Forn. Por empresas / Other business services	-1.6	-9.1	-16.1	-15.1	-20.5	-23.9	-22.7	-19.5	-26.9	-27.5	-34.5	-35.8	-28.5	-16.7	1.0	-0.3	6.3	7.1	11.8	3.8	13.5	14.9	29.7	40.4
Informação, Informática e Comun. / Infor., Computers, and Commun.	15.0	15.7	17.2	16.6	10.5	13.7	15.4	17.7	16.6	10.6	8.4	13.8	19.4	10.1	5.9	-1.7	9.0	9.0	17.9	13.4	2.7	-4.4	-3.6	-4.3
Total	4.3	3.3	1.1	1.2	-0.8	-0.7	1.1	2.4	0.5	-0.4	-2.5	-2.2	-2.6	-1.0	4.1	3.2	7.5	8.2	9.5	6.4	6.9	6.6	9.5	11.3

Gráfico / Graph 5.6.
 Variação Homóloga das Importações
 Imports Annual Change

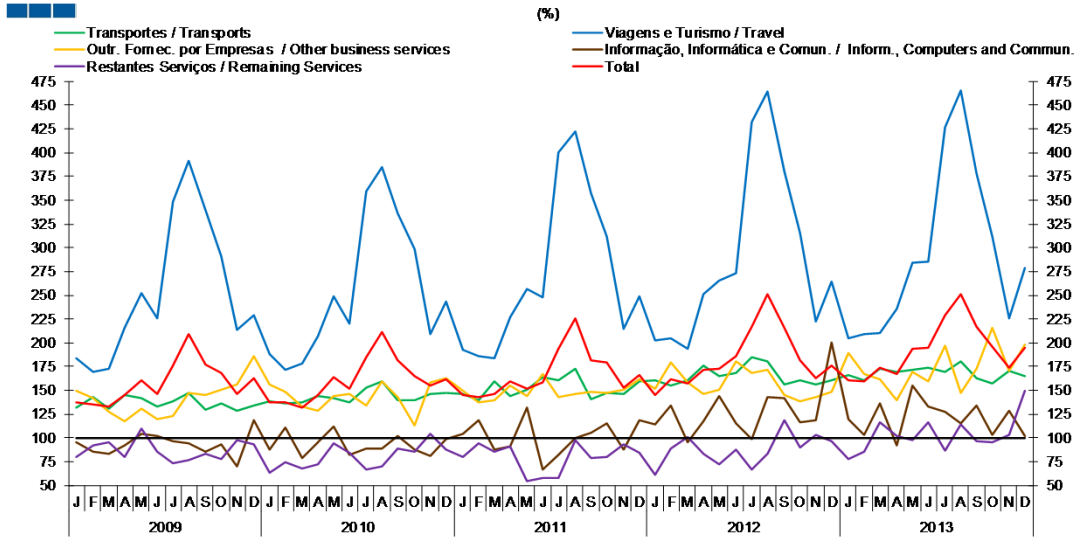


	2012												2013											
	J	F	M	A	M	J	J	A	S	O	N	D	J	F	M	A	M	J	J	A	S	O	N	D
Transportes / Transports	0.5	-0.7	-0.3	-4.7	-6.7	-6.7	-4.0	-1.3	-6.1	-5.8	-7.3	-2.9	-4.0	-4.4	-3.5	1.7	4.0	6.4	6.0	5.0	6.3	5.6	6.5	6.6
Viagens e Turismo / Travel	1.7	1.4	0.4	-3.3	-2.7	-3.7	-1.2	-3.2	-2.2	-0.9	1.8	2.4	2.4	1.5	3.2	4.2	6.4	6.8	7.0	6.0	7.0	6.6	6.8	6.3
Outro Forn. Por empresas / Other business services	-0.4	-16.2	-26.6	-24.3	-23.5	-25.5	-29.8	-29.8	-34.3	-29.7	-31.5	-31.2	-30.7	-19.2	-5.3	2.9	3.1	9.0	5.7	7.3	7.3	-1.3	-0.5	3.7
Informação, Informática e Comun. / Infor., Computers, and Commun.	3.0	0.9	5.5	-1.3	-4.4	-15.2	-10.9	-16.9	-10.3	-11.0	-11.8	-13.9	-10.6	-0.2	0.4	5.5	5.6	12.9	0.6	4.8	1.2	9.7	1.1	21.7
Total	3.7	-1.8	-5.4	-7.6	-9.8	-12.1	-12.1	-9.8	-11.9	-9.5	-10.3	-6.8	-9.4	-5.5	-2.2	1.2	1.0	3.3	2.0	2.9	4.7	3.9	4.3	2.8

Nota: Não inclui as séries Construção, Financeiros, Seguros, Direitos de Utilização, Nat. Pessoal, Cult. e Recreat., Operações Gov. (Restantes Serviços), devido ao seu baixo valor relativo e elevada variabilidade.
 Note: Does not include Construction, Financial, Insurance, Royalties and Licence Fees, Personal, Cultural and Recreational Serv., Government Serv. (Remaining Services) because of its relative small value and high variability.

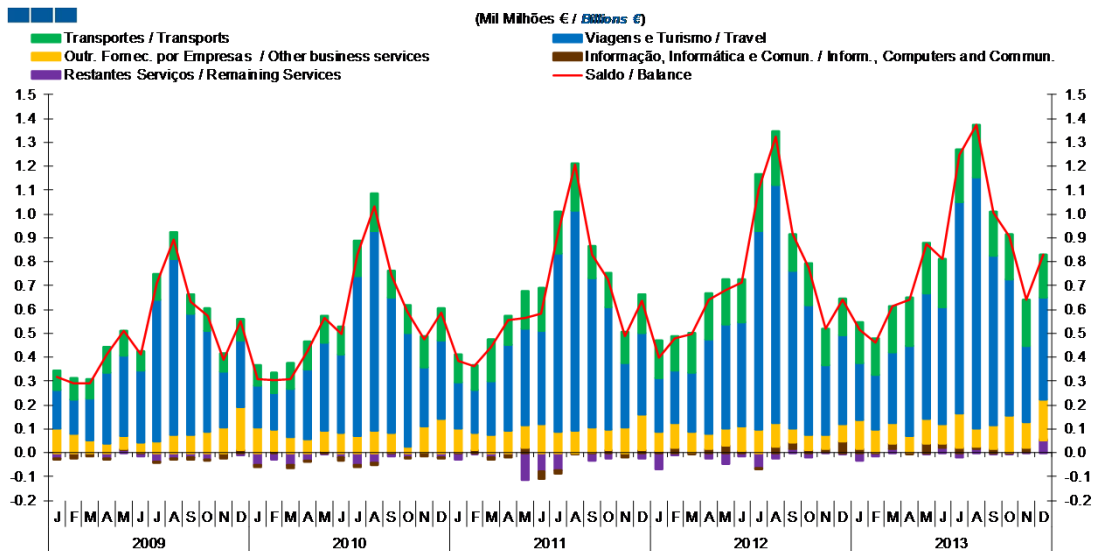
5. Balança de Serviços / Services Account

Gráfico / Graph 5.7.
Taxa de Cobertura
Coverage Rate



	2012												2013											
	J	F	M	A	M	J	J	A	S	O	N	D	J	F	M	A	M	J	J	A	S	O	N	D
Transportes / Transports	160.3	154.7	160.3	175.9	165.0	167.9	184.7	180.7	156.6	160.2	156.3	161.0	166.0	160.9	172.8	169.5	171.1	173.5	169.7	179.9	162.8	157.6	170.8	164.7
Viagens e Turismo / Travel	203.0	205.0	193.7	251.3	265.6	273.0	432.3	464.2	379.8	314.6	222.7	264.7	204.6	209.3	210.0	235.4	284.7	285.2	426.6	465.4	378.2	311.5	225.2	278.5
Outro Forn. Por empresas / Other business services	151.7	179.0	158.1	146.2	150.3	180.7	168.4	171.7	145.4	138.8	142.9	148.6	189.3	167.6	162.0	140.1	169.0	159.4	197.0	147.0	172.3	215.4	171.0	197.9
Informação, Informática e Comun. / Inform., Computers, and Commun.	114.6	133.9	94.9	117.4	144.5	115.7	98.3	143.1	141.3	116.2	118.9	200.3	120.1	102.6	136.6	92.4	155.3	132.8	127.7	115.1	133.6	103.6	128.3	102.6
Restantes Serviços / Remaining Services	61.6	89.1	101.3	83.7	71.9	87.3	66.4	83.0	118.9	89.4	102.9	96.2	78.1	85.6	116.2	102.1	97.7	116.9	86.1	113.9	96.6	95.5	103.4	149.2
Total	145.6	162.1	156.8	171.3	173.2	185.6	216.4	251.2	215.8	181.7	163.0	176.4	160.8	159.2	173.3	167.3	193.2	194.9	229.0	251.4	216.7	195.5	173.9	195.2

Gráfico / Graph 5.8.
Saldo
Balance

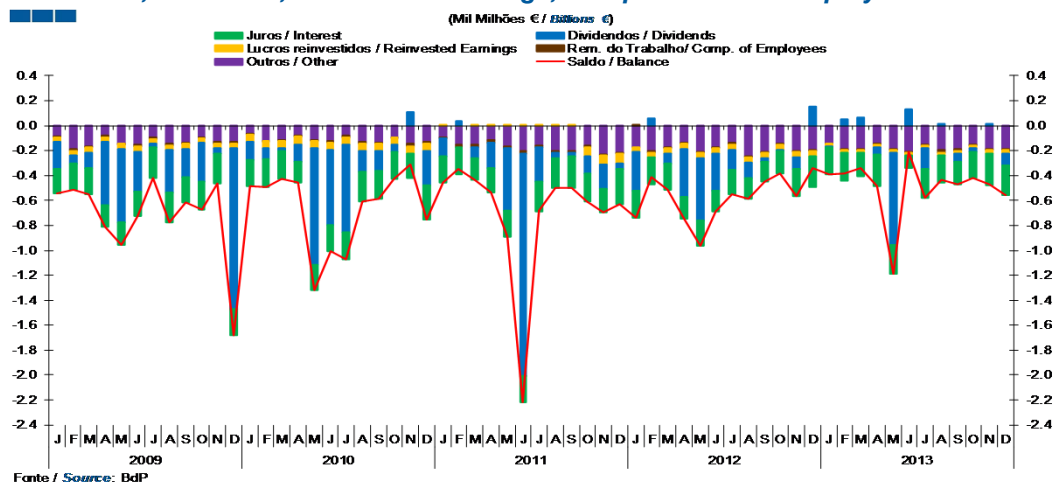


	2012												2013											
	J	F	M	A	M	J	J	A	S	O	N	D	J	F	M	A	M	J	J	A	S	O	N	D
Transportes / Transports	159	143	167	191	190	180	241	222	154	178	152	155	170	151	196	198	213	203	221	218	185	186	194	178
Viagens e Turismo / Travel	224	221	244	396	437	434	831	998	661	545	295	374	238	232	296	381	526	487	882	1,055	708	574	319	430
Outro Forn. Por empresas / Other business services	78	105	89	66	71	103	96	101	58	61	58	71	123	94	85	66	103	81	143	73	98	151	109	168
Informação, Informática e Comun. / Inform., Computers, and Commun.	9	21	-4	14	30	9	-1	24	25	11	12	48	15	2	21	-8	38	20	23	10	18	3	16	2
Restantes Serviços / Remaining Services	-70	-11	2	-26	-47	-16	-63	-22	18	-18	3	-6	-32	-17	17	2	-3	20	-21	18	-4	-6	4	52
Saldo / Balance	400	478	497	640	681	712	1,103	1,323	915	778	520	640	514	462	615	640	876	811	1,249	1,373	1,005	908	642	830

Nota: A série Restantes Serviços inclui Construção, Financeiros, Seguros, Direitos de Utilização, Nat. Pessoal, Cult. e Recreat., Operações Governamentais.
Note: Remaining Services series includes Construction, Financial, Insurance, Royalties and Licence Fees, Personal, Cultural and Recreational Services, Government Services.

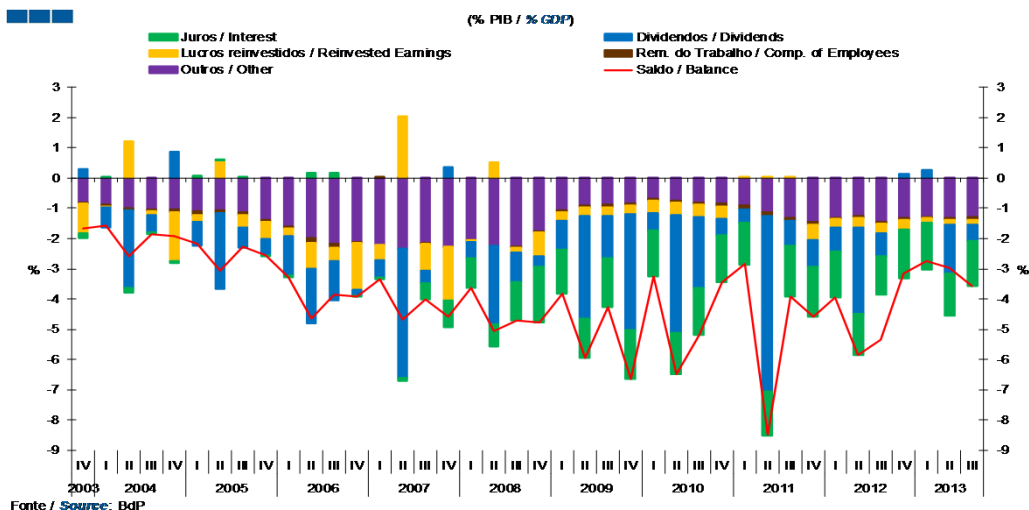
6. Balança de Rendimentos / Income Account

Gráfico / Graph 6.1.
Juros, Dividendos, Lucros Reinvestidos, Rend. do Trabalho e Outros
Interest, Dividends, Reinvested Earnings, Compensation of Employees and Others



	2012					2013					2013					2013								
	J	F	M	A	M	J	J	A	S	O	N	D	J	F	M	A	M	J	J	A	S	O	N	D
Remunerações do Trabalho / Compensation of Employees	0.0	0.0	0.0	0.0	0.0	0.0	0.0	0.0	0.0	0.0	0.0	0.0	0.0	0.0	0.0	0.0	0.0	0.0	0.0	0.0	0.0	0.0	0.0	0.0
Dividendos / Dividends	-0.3	0.1	-0.1	-0.4	-0.5	-0.3	-0.2	-0.1	0.0	0.0	-0.1	0.2	0.0	0.1	0.1	-0.1	-0.7	0.1	-0.2	0.0	-0.1	0.0	0.0	-0.1
Lucros Reinvestidos / Reinvested Earnings	0.0	0.0	0.0	0.0	0.0	0.0	0.0	0.0	0.0	0.0	0.0	0.0	0.0	0.0	0.0	0.0	0.0	0.0	0.0	0.0	0.0	0.0	0.0	0.0
Juros / Interest	-0.2	-0.2	-0.2	-0.2	-0.2	-0.2	-0.2	-0.2	-0.2	-0.2	-0.2	-0.3	-0.2	-0.2	-0.2	-0.2	-0.2	-0.2	-0.2	-0.1	-0.2	-0.2	-0.2	-0.2
Outros / Other	-0.2	-0.2	-0.2	-0.1	-0.2	-0.2	-0.1	-0.2	-0.2	-0.1	-0.2	-0.2	-0.1	-0.2	-0.2	-0.1	-0.2	-0.2	-0.2	-0.1	-0.2	-0.2	-0.2	-0.2
Saldo / Balance	-0.7	-0.4	-0.5	-0.7	-1.0	-0.7	-0.5	-0.6	-0.4	-0.4	-0.6	-0.3	-0.4	-0.4	-0.3	-0.5	-1.2	-0.2	-0.6	-0.4	-0.5	-0.4	-0.5	

Gráfico / Graph 6.2.
Juros, Dividendos, Lucros Reinvestidos, Rend. do Trabalho e Outros
Interest, Dividends, Reinvested Earnings, Compensation of Employees and Others



	2008				2009				2010				2011				2012				2013			
	IV	I	II	III	IV	I	II	III	IV	I	II	III	IV	I	II	III	IV	I	II	III	IV	I	II	III
Remunerações do Trabalho / Compensation of Employees	0.0	0.0	0.0	0.0	0.0	-0.1	-0.1	-0.1	0.0	-0.1	-0.1	-0.1	-0.1	-0.1	-0.1	-0.1	0.0	-0.1	-0.1	-0.1	0.0	-0.1	-0.1	-0.1
Dividendos / Dividends	0.4	-0.6	-2.6	-1.0	-0.3	-1.0	-3.4	-1.4	-3.9	-0.6	-3.9	-2.3	-0.5	-0.5	-5.8	-0.8	-0.9	-0.8	-0.9	-0.8	-2.9	-0.8	0.1	
Lucros Reinvestidos / Reinvested Earnings	-1.8	-0.1	0.5	-0.1	-0.8	-0.3	-0.3	-0.3	-0.3	-0.4	-0.4	-0.4	-0.4	0.0	0.0	0.0	-0.5	-0.3	-0.3	-0.3	-0.3	-0.2	-0.2	
Juros / Interest	-0.9	-1.0	-0.7	-1.2	-1.9	-1.5	-1.3	-1.6	-1.6	-1.5	-1.4	-1.6	-1.6	-1.4	-1.4	-1.7	-1.7	-1.5	-1.3	-1.6	-1.6	-1.4	-1.5	
Outros / Other	-2.3	-2.0	-2.2	-2.3	-1.8	-1.1	-0.9	-0.9	-0.8	-0.7	-0.7	-0.8	-0.8	-0.9	-1.1	-1.3	-1.4	-1.3	-1.3	-1.3	-1.3	-1.3	-1.3	
Saldo / Balance	-4.6	-3.6	-5.1	-4.7	-4.8	-3.8	-5.9	-4.3	-6.6	-3.3	-6.5	-5.2	-3.5	-2.9	-8.5	-3.9	-4.6	-3.9	-5.8	-5.4	-3.2	-2.7	-3.0	

Nota: A série Restantes Serviços inclui Construção, Financeiros, Seguros, Direitos de Utilização, Nat. Pessoal, Cult. e Recreat., Operações Governamentais.
 Note: Remaining Services series includes Construction, Financial, Insurance, Royalties and Licence Fees, Personal, Cultural and Recreational Services, Government Services.