

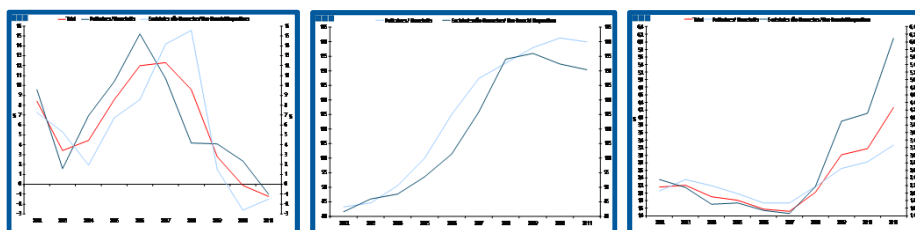
Estatísticas Temáticas de Conjuntura

Short-term Thematic Statistics

Edição / *Release* 2012

21 de Fevereiro de 2012

February, 21, 2012



Crédito ao Setor Privado *Credit to Private Sector*

- 2002 a 2011 -

- 2002 to 2011 -

Dados Anuais
Annual Data

Fonte / *Source*: Banco de Portugal

Índice / *Index*

	Página / <i>Page</i>
1. Total	
Empréstimos Concedidos / <i>Granted Loans</i>	3-4
Empréstimos Concedidos de Cobrança Duvidosa / <i>Non-performing Granted Loans</i>	5-6
Prazo dos Empréstimos Concedidos / <i>Granted Loans Term</i>	7
2. Sociedades Não Financeiras / <i>Non-Financial Corporations</i>	
Empréstimos Concedidos por Ramo de Atividade / <i>Granted Loans by Branch of Activity</i>	8-9
Empréstimos Concedidos de Cobrança Duvidosa por Ramo de Atividade / <i>Non-performing Granted Loans by Branch of Activity</i>	10-11
Prazo dos Empréstimos Concedidos / <i>Granted Loans Term</i>	12
3. Particulares / <i>Households</i>	
Empréstimos Concedidos por Destino / <i>Granted Loans by Purpose</i>	13-14
Empréstimos Concedidos de Cobrança Duvidosa por Destino / <i>Non-performing Granted Loans by Purpose</i>	15-16
Prazo dos Empréstimos Concedidos / <i>Granted Loans Term</i>	17

1. Total

Gráfico / Graph 1.1.
Empréstimos Concedidos
Granted Loans

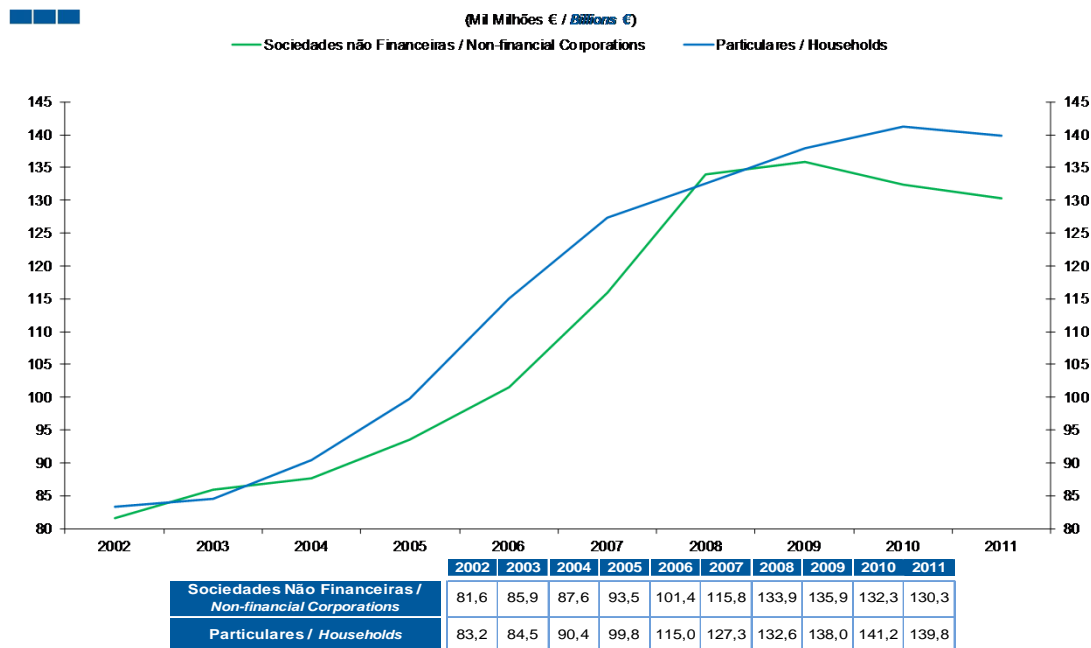
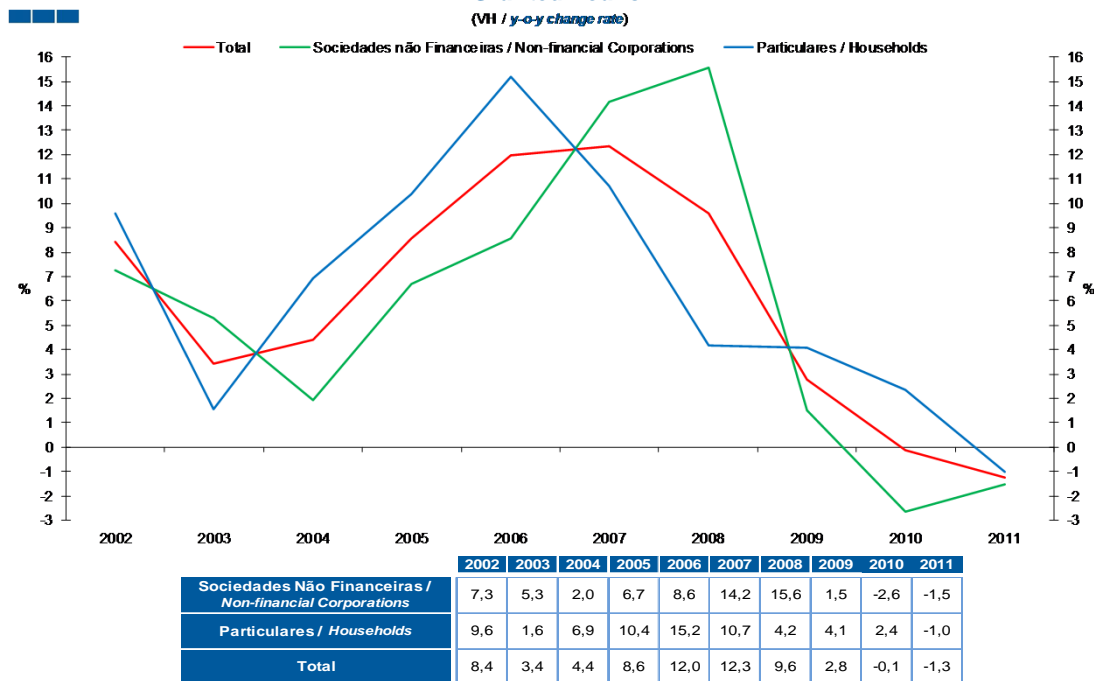


Gráfico / Graph 1.2.
Empréstimos Concedidos
Granted Loans

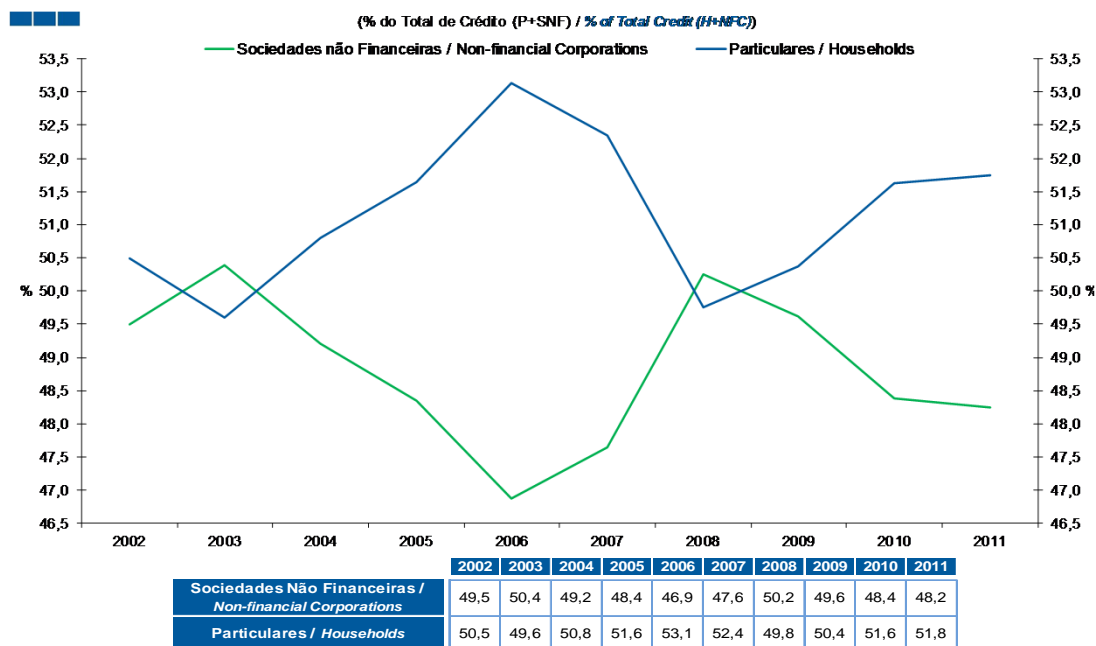


Nota: Particulares - Inclui crédito a emigrantes; Sociedades não Financeiras - Inclui crédito titulado

Note: Households - Includes credit to emigrants; Non-Financial Corporations - Includes loans represented by securities

1. Total

Gráfico / Graph 1.3.
Empréstimos Concedidos
Granted Loans



Nota: Particulares - Inclui crédito a emigrantes; Sociedades não Financeiras - Inclui crédito titulado

Note: Households - Includes credit to emigrants; Non-Financial Corporations - Includes loans represented by securities

1. Total

Gráfico / Graph 1.4.
Empréstimos Concedidos de Cobrança Duvidosa
Non-performing Granted Loans

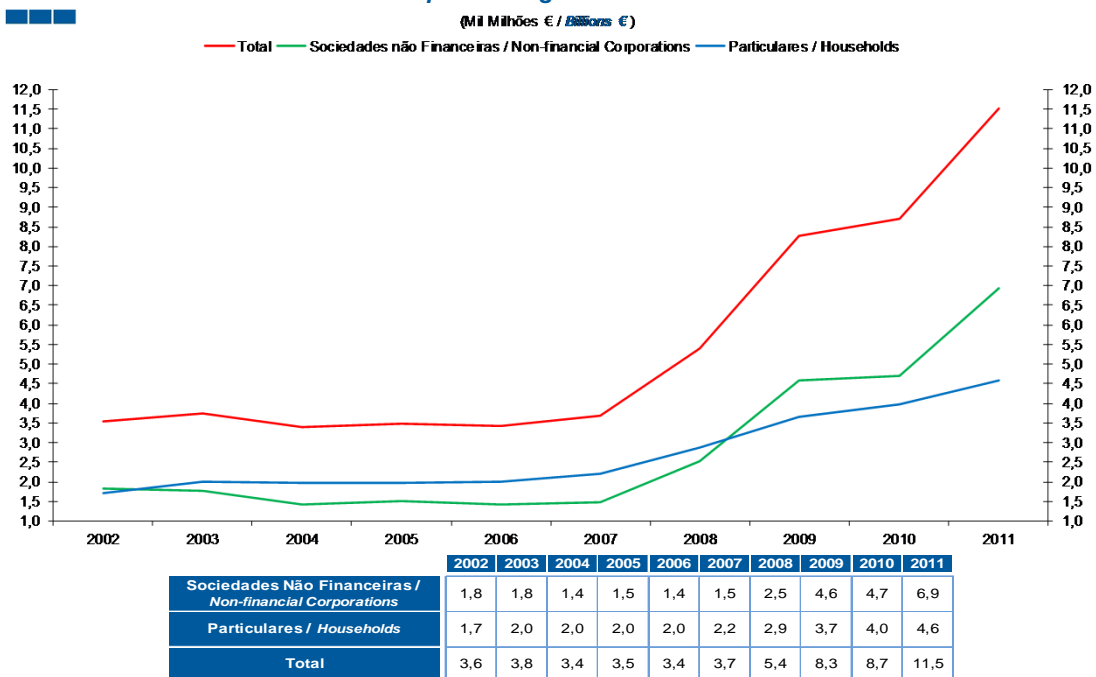
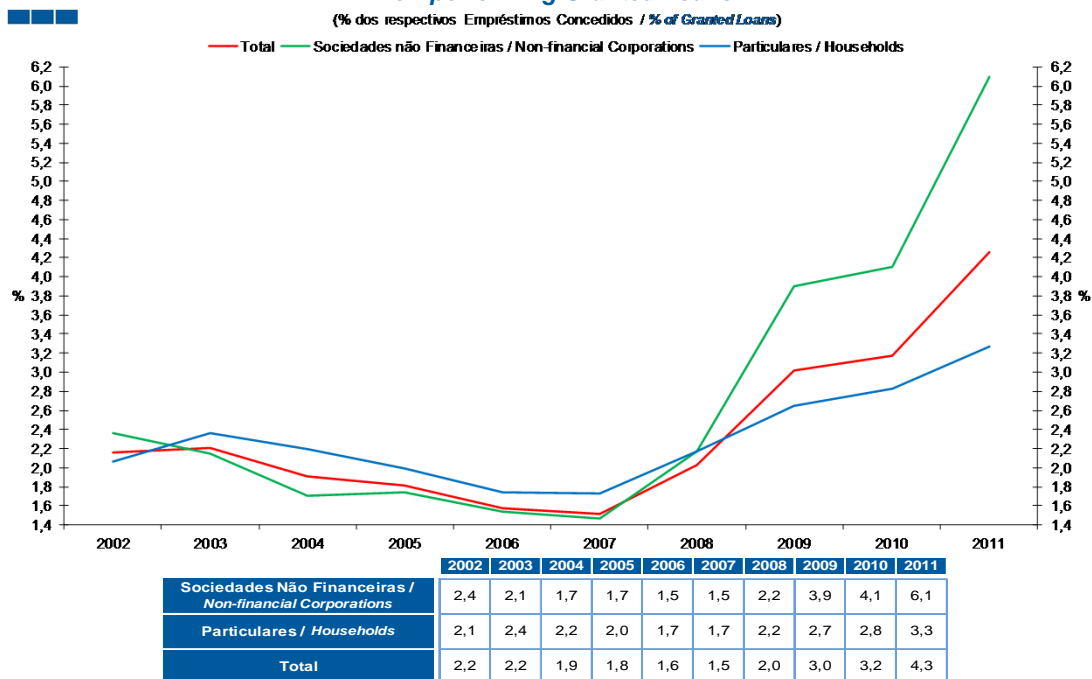


Gráfico / Graph 1.5.
Empréstimos Concedidos de Cobrança Duvidosa
Non-performing Granted Loans

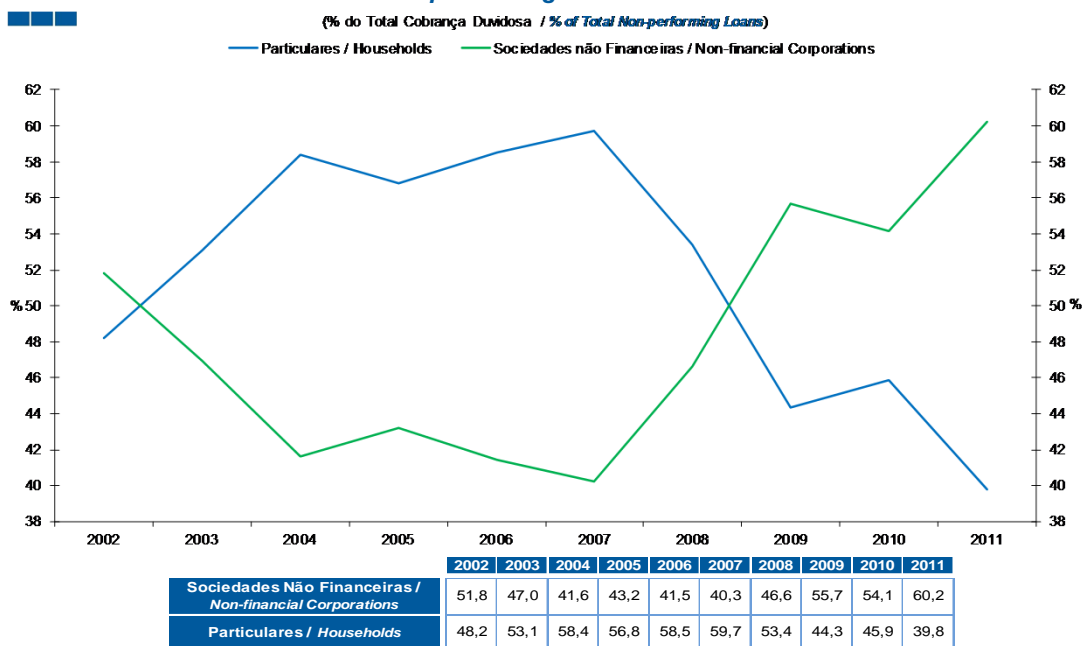


Nota: Particulares - Inclui crédito a emigrantes; Sociedades não Financeiras - Não inclui crédito titulado

Note: Households - Includes credit to emigrants; Non-Financial Corporations - Does not include loans represented by securities

1. Total

Gráfico / Graph 1.6.
Empréstimos Concedidos de Cobrança Duvidosa
Non-performing Granted Loans

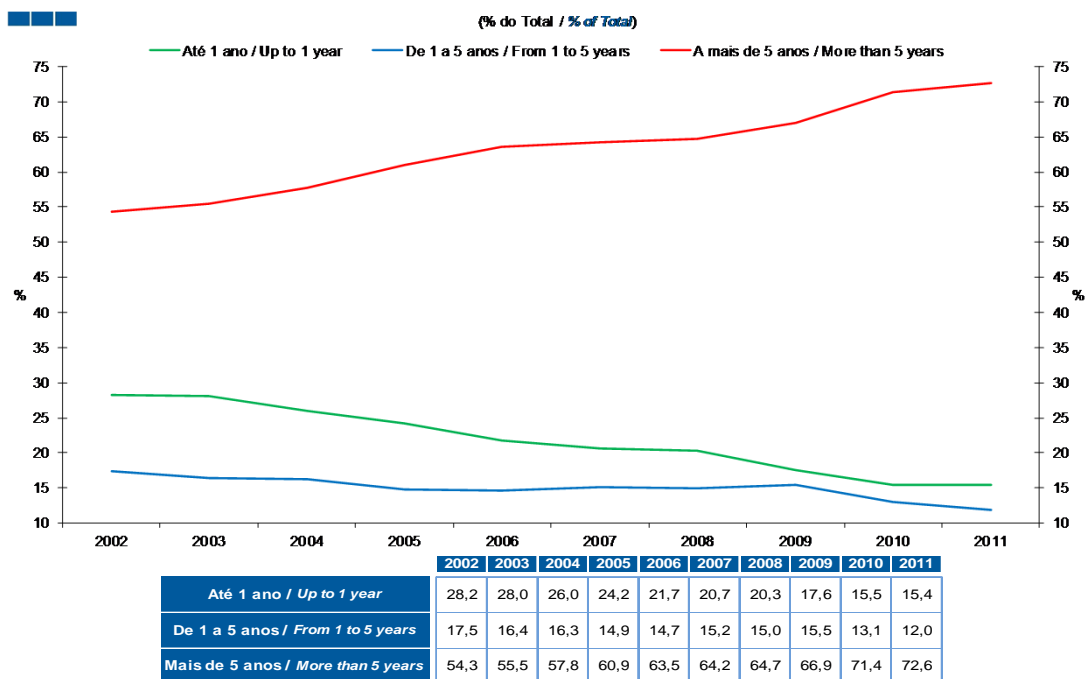


Nota: Particulares - Inclui crédito a emigrantes; Sociedades não Financeiras - Não inclui crédito titulado

Note: Households - Includes credit to emigrants; Non-Financial Corporations - Does not include loans represented by securities

1. Total

Gráfico / Graph 1.7.
Prazo dos Empréstimos Concedidos
Granted Loans Term



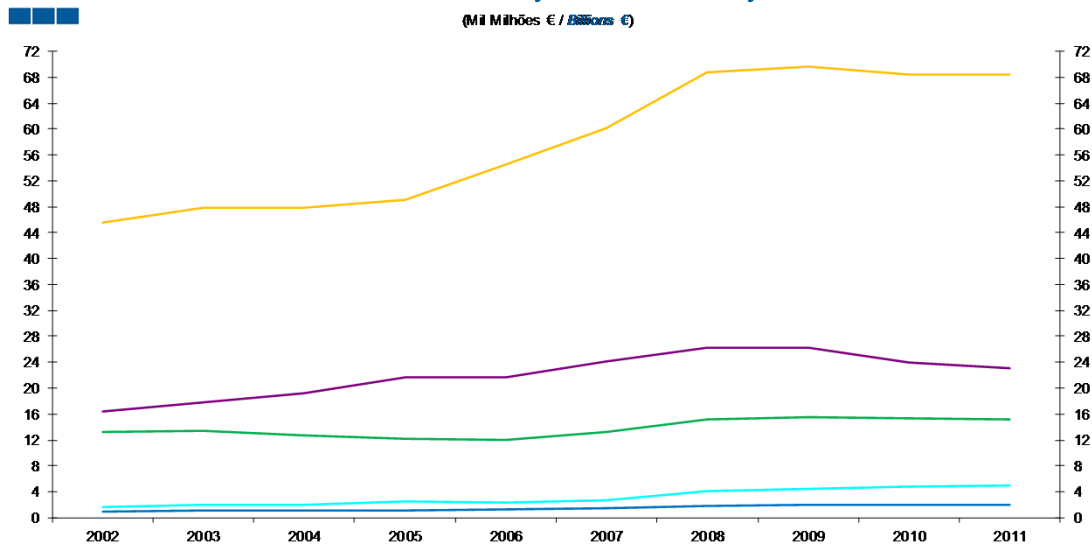
Nota: Particulares - Inclui crédito a emigrantes; Sociedades não Financeiras - Não inclui crédito titulado

Note: Households - Includes credit to emigrants; Non-Financial Corporations - Does not include loans represented by securities

2. Sociedades não Financeiras / Non-Financial Corporations

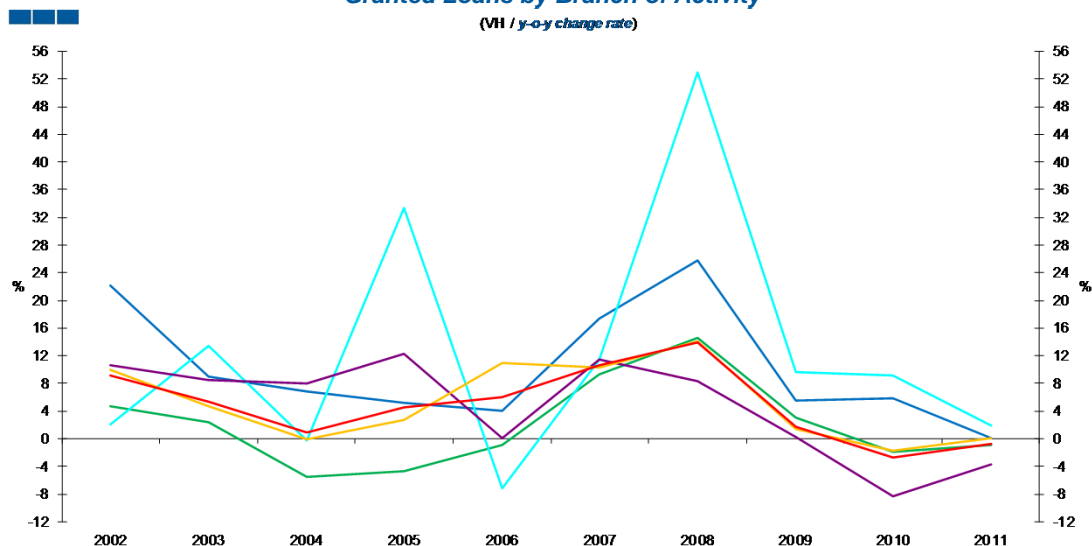
- Agricultura, silvicultura e pesca / Agriculture, forestry and fishing (A)
- Energia, água e resíduos / Energy, water and waste (D+E)
- Serviços / Services (G-J;K(64202):L-N;P-U)
- Indústrias / Industries (B+C)
- Construção / Construction (F)
- Total

Gráfico / Graph 2.1.
Empréstimos Concedidos por Ramo de Atividade
Granted Loans by Branch of Activity



	2002	2003	2004	2005	2006	2007	2008	2009	2010	2011
Agricultura, silvicultura e pesca / Agriculture, forestry and fishing	1,0	1,1	1,1	1,2	1,2	1,4	1,8	1,9	2,0	2,0
Construção / Construction	16,5	17,9	19,3	21,7	21,7	24,1	26,2	26,2	24,0	23,1
Energia, água e resíduos / Energy, water and waste	1,7	1,9	1,9	2,6	2,4	2,6	4,0	4,4	4,8	4,9
Indústrias / Industries	13,2	13,5	12,8	12,2	12,1	13,2	15,1	15,6	15,3	15,2
Serviços / Services	45,6	47,8	47,8	49,1	54,5	60,2	68,7	69,7	68,4	68,5

Gráfico / Graph 2.2.
Empréstimos Concedidos por Ramo de Atividade
Granted Loans by Branch of Activity



	2002	2003	2004	2005	2006	2007	2008	2009	2010	2011
Agricultura, silvicultura e pesca / Agriculture, forestry and fishing	22,2	9,0	6,8	5,1	4,0	17,4	25,8	5,6	5,9	0,1
Construção / Construction	10,6	8,5	8,0	12,2	0,1	11,4	8,3	0,3	-8,4	-3,7
Energia, água e resíduos / Energy, water and waste	2,1	13,4	-0,2	33,4	-7,2	11,4	53,0	9,6	9,1	2,0
Indústrias / Industries	4,7	2,4	-5,5	-4,6	-0,8	9,4	14,6	3,1	-1,9	-0,9
Serviços / Services	9,9	4,8	0,0	2,8	11,0	10,4	14,1	1,4	-1,7	0,1
Total	9,1	5,4	0,9	4,6	6,0	10,6	14,0	1,7	-2,7	-0,8

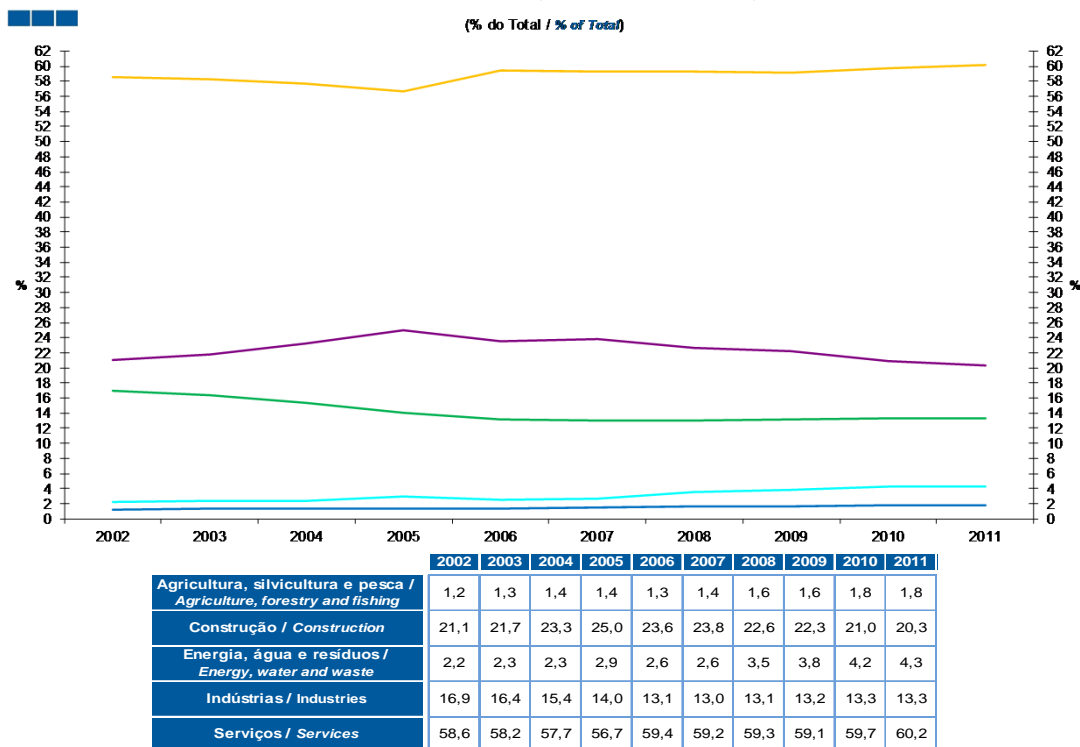
Nota: Não inclui crédito titulado.

Note: Does not include loans represented by securities

2. Sociedades não Financeiras / Non-Financial Corporations

- Agricultura, silvicultura e pesca / Agriculture, forestry and fishing (A)
- Energia, água e resíduos / Energy, water and waste (D+E)
- Serviços / Services (G-J;K(64202);L-N;P-U)
- Indústrias / Industries (B+C)
- Construção / Construction (F)
- Total

Gráfico / Graph 2.3.
Empréstimos Concedidos por Ramo de Atividade
Granted Loans by Branch of Activity



Nota: Não inclui crédito titulado.

Note: Does not include loans represented by securities

2. Sociedades não Financeiras / Non-Financial Corporations

- Agricultura, silvicultura e pesca / Agriculture, forestry and fishing (A)
- Energia, água e resíduos / Energy, water and waste (D+E)
- Serviços / Services (G-J;K(64202);L-N;P-U)
- Indústrias / Industries (B+C)
- Construção / Construction (F)
- Total

Gráfico / Graph 2.4.
Empréstimos Concedidos de Cobrança Duvidosa por Ramo de Atividade
Non-performing Granted Loans by Branch of Activity

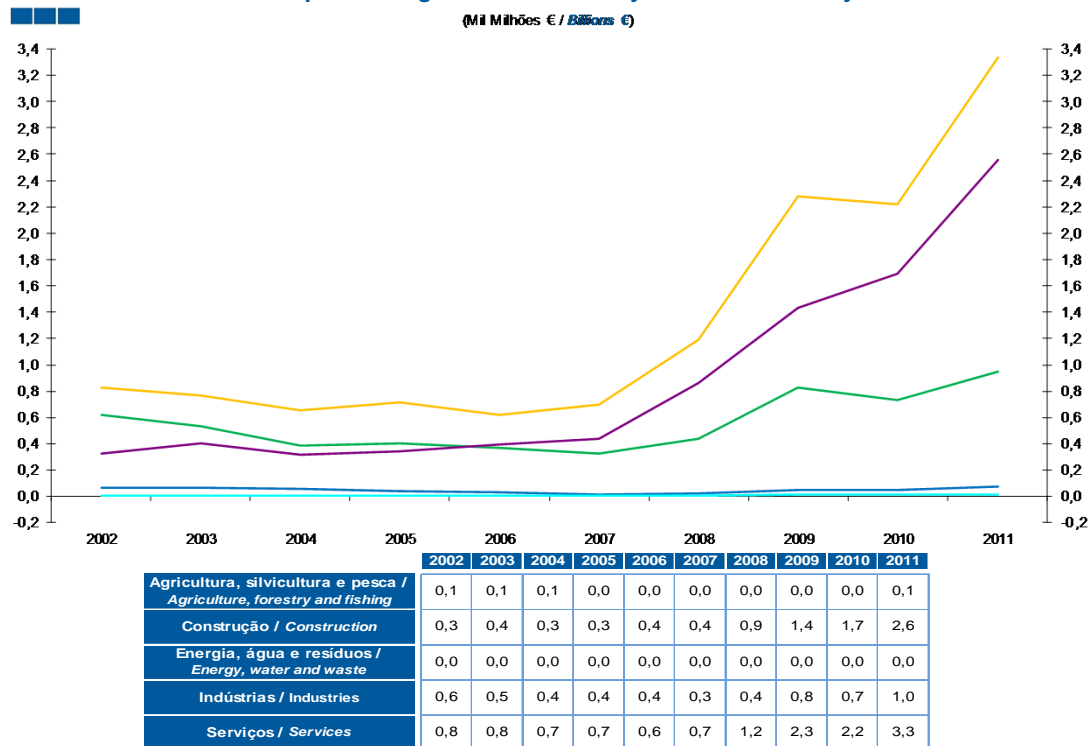
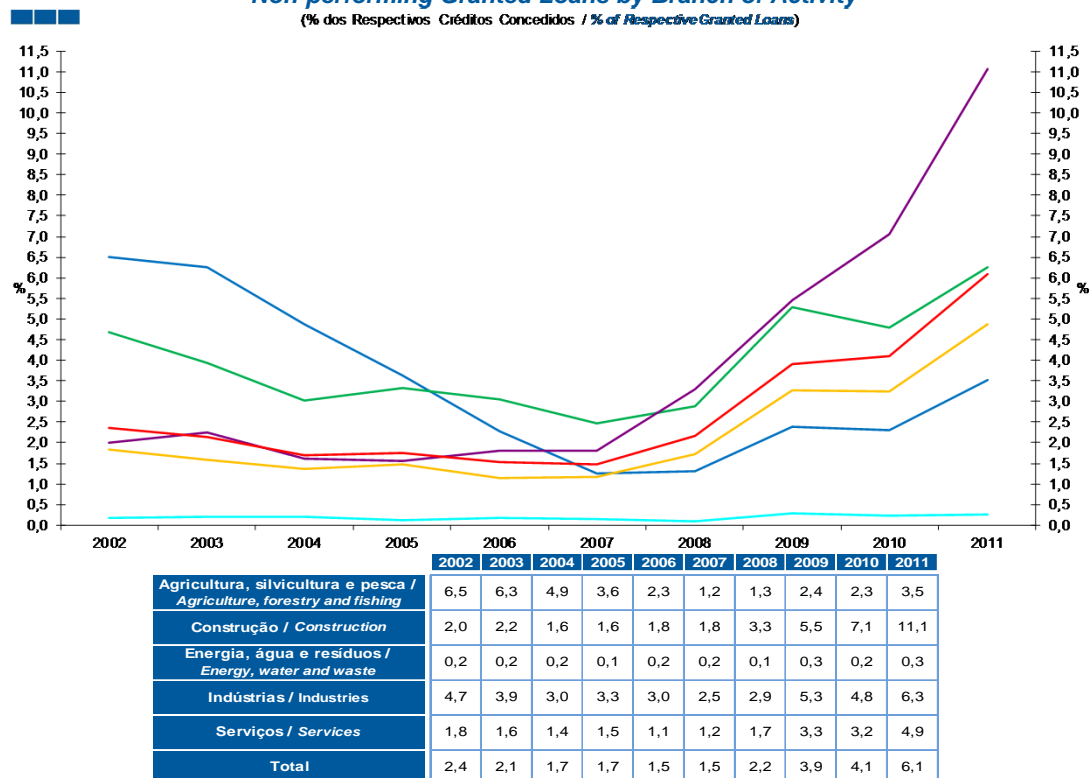


Gráfico / Graph 2.5.
Empréstimos Concedidos de Cobrança Duvidosa por Ramo de Atividade
Non-performing Granted Loans by Branch of Activity



Nota: Não inclui crédito titulado.

Note: Does not include loans represented by securities

2. Sociedades não Financeiras / Non-Financial Corporations

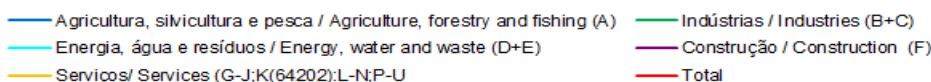
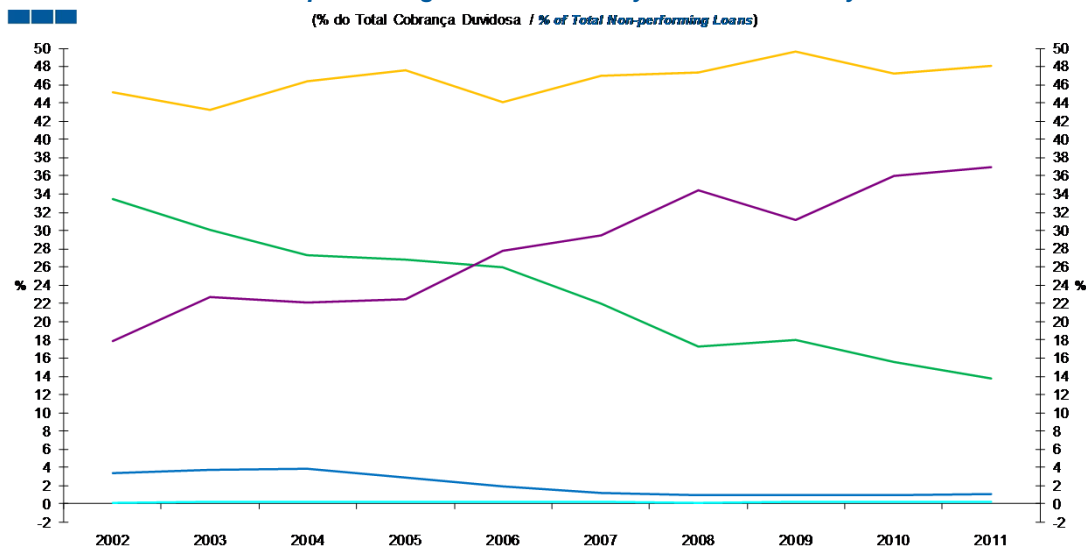


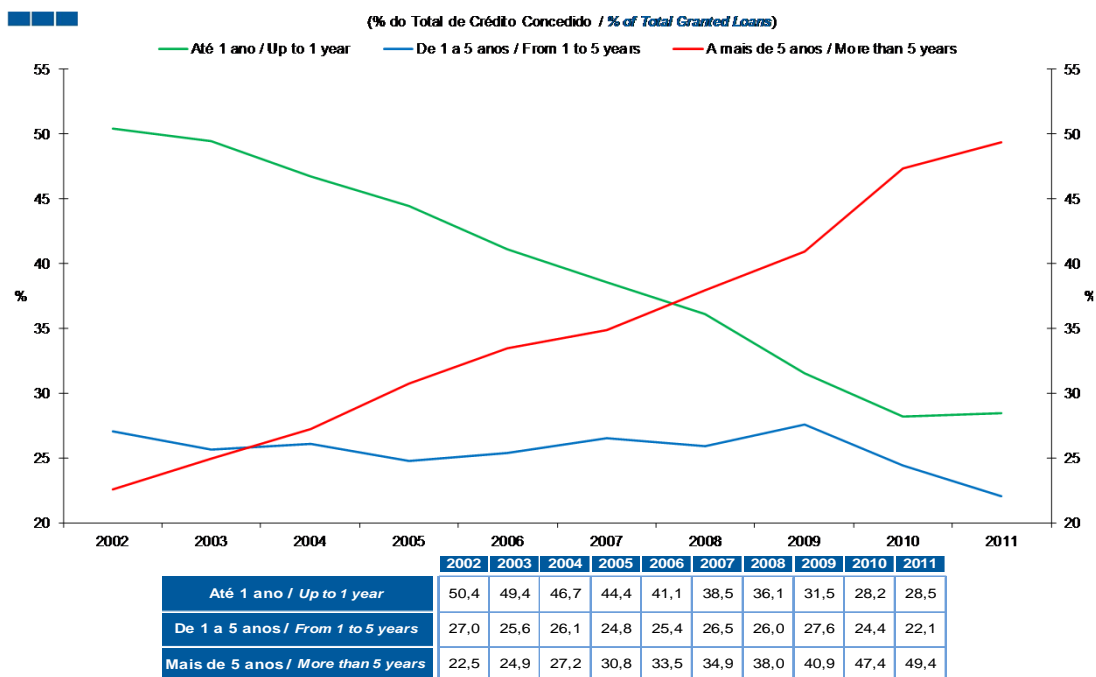
Gráfico / Graph 2.6.
Empréstimos Concedidos de Cobrança Duvidosa por Ramo de Atividade
Non-performing Granted Loans by Branch of Activity



	2002	2003	2004	2005	2006	2007	2008	2009	2010	2011
Agricultura, silvicultura e pesca / Agriculture, forestry and fishing	3,4	3,7	3,9	2,8	2,0	1,2	1,0	1,0	1,0	1,0
Construção / Construction	17,9	22,7	22,1	22,5	27,8	29,5	34,4	31,2	36,0	36,9
Energia, água e resíduos / Energy, water and waste	0,2	0,2	0,3	0,2	0,3	0,3	0,2	0,3	0,2	0,2
Indústrias / Industries	33,5	30,0	27,3	26,8	25,9	22,0	17,3	18,0	15,5	13,7
Serviços / Services	45,1	43,3	46,4	47,6	44,0	46,9	47,3	49,6	47,2	48,1

2. Sociedades não Financeiras / Non-Financial Corporations

Gráfico / Graph 2.7.
Prazo dos Empréstimos Concedidos
Granted Loans Term



Nota: Inclui crédito titulado

Note: Includes loans represented by securities

3. Particulares / Households

Gráfico / Graph 3.1.
Empréstimos Concedidos por Destino
Granted Loans by Purpose

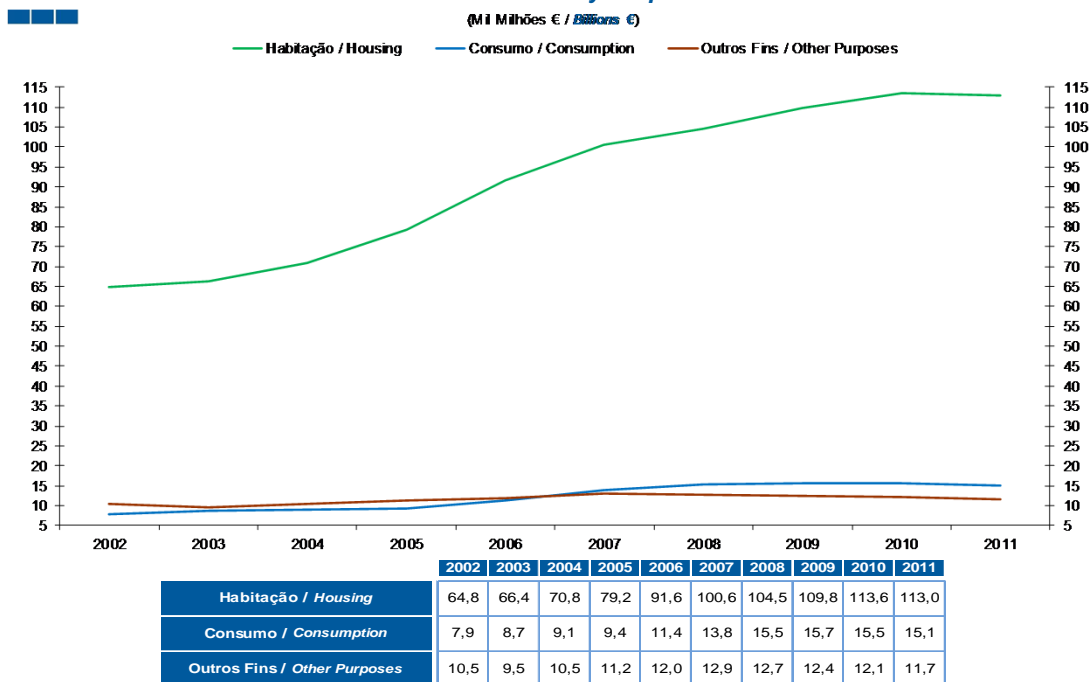
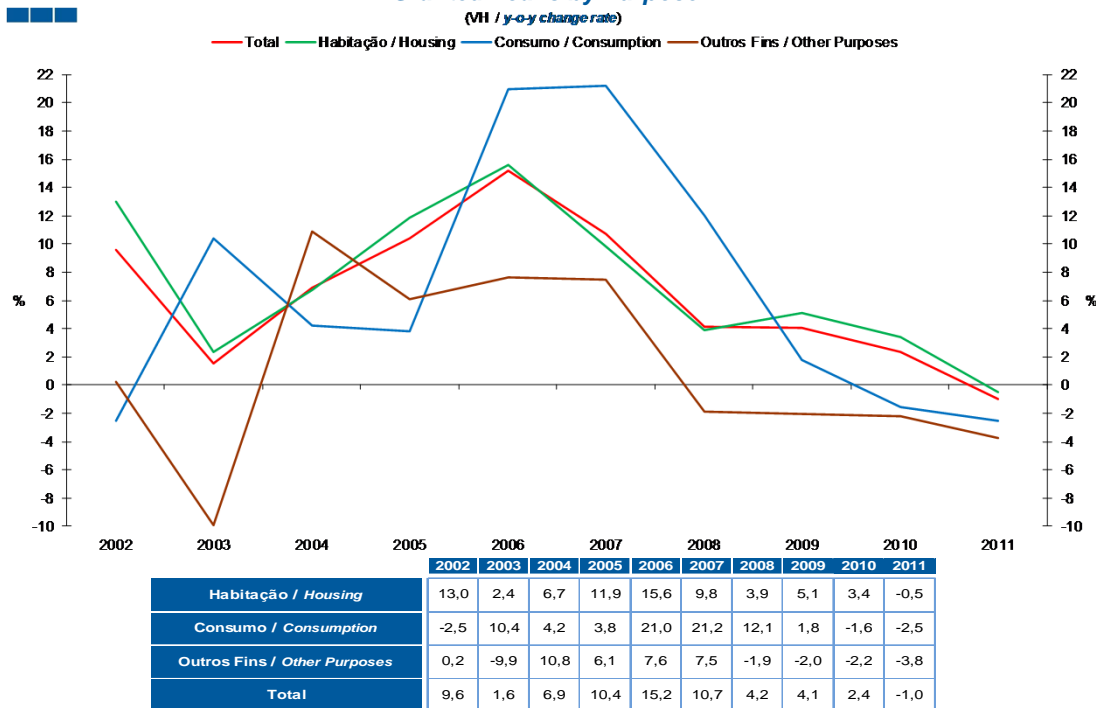


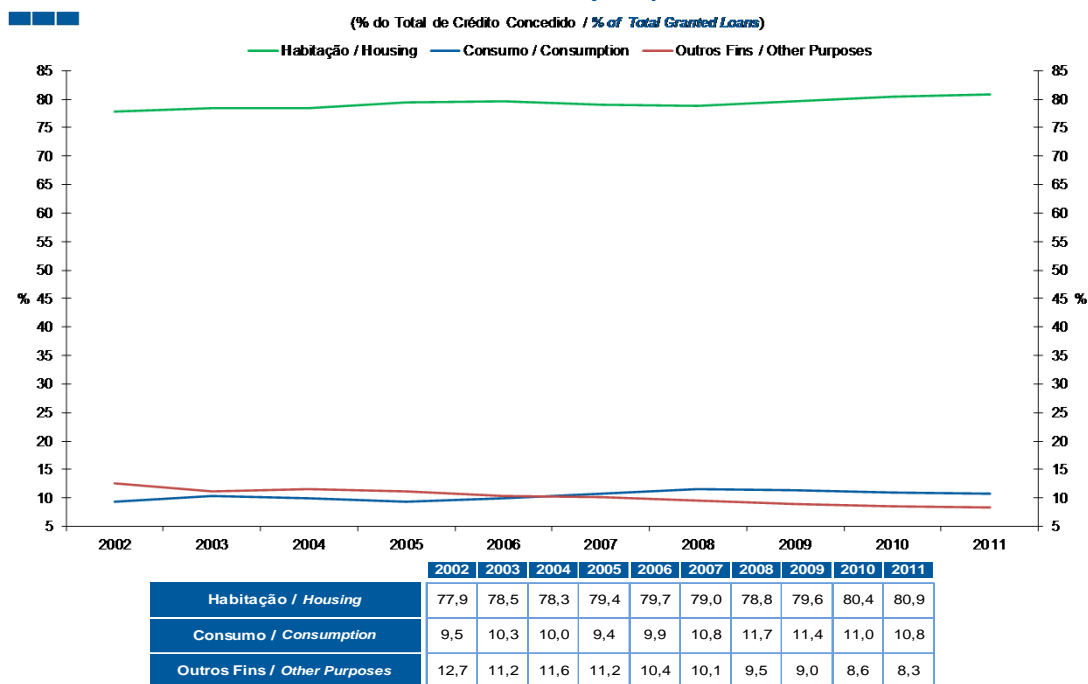
Gráfico / Graph 3.2.
Empréstimos Concedidos por Destino
Granted Loans by Purpose



Nota: Inclui crédito a emigrantes
Note: Includes credit to emigrants

3. Particulares / Households

Gráfico / Graph 3.3.
Empréstimos Concedidos por Destino
Granted Loans by Purpose



3. Particulares / Households

Gráfico / Graph 3.4.
Empréstimos Concedidos de Cobrança Duvidosa por Destino
Non-performing Granted Loans by Purpose

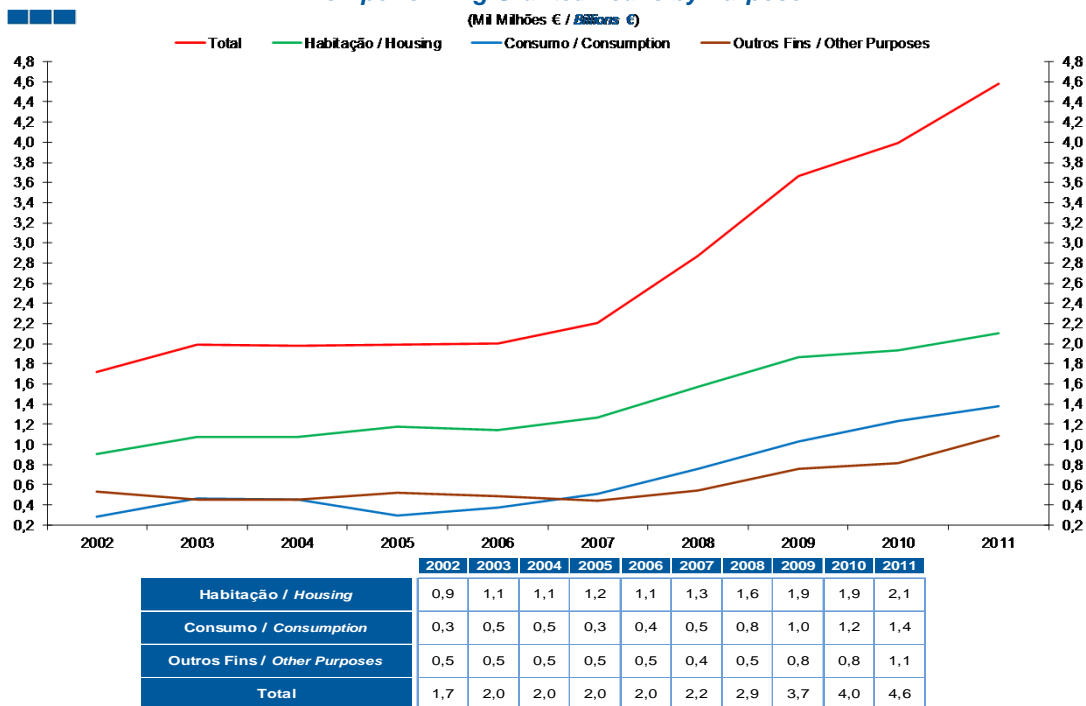
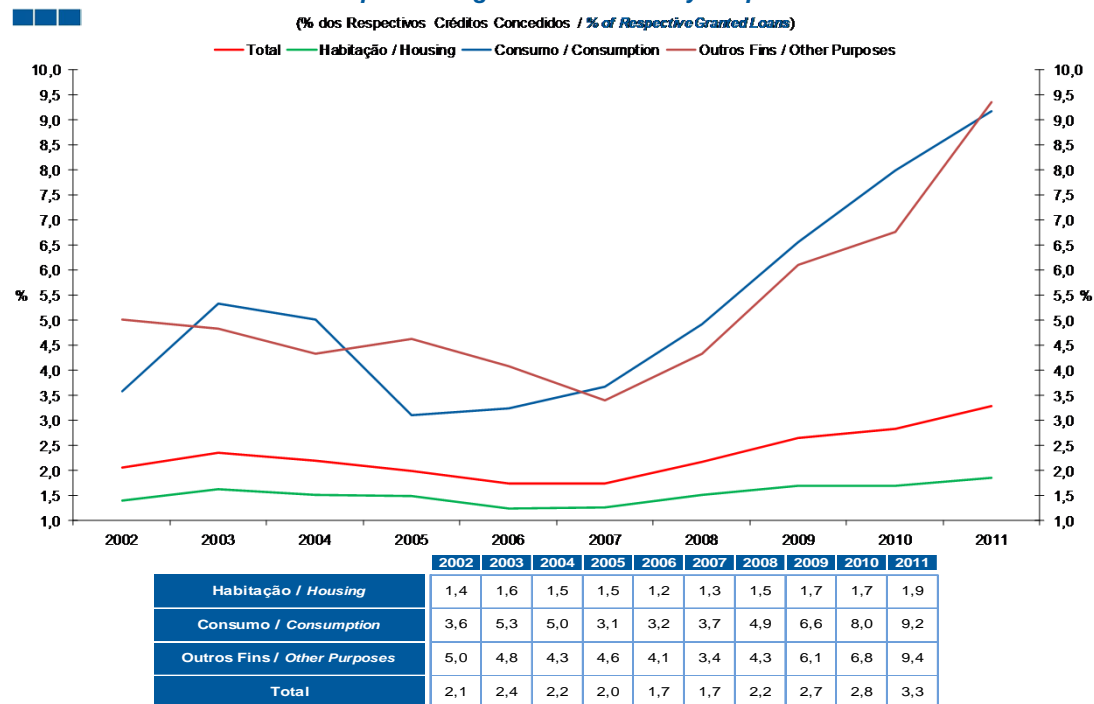


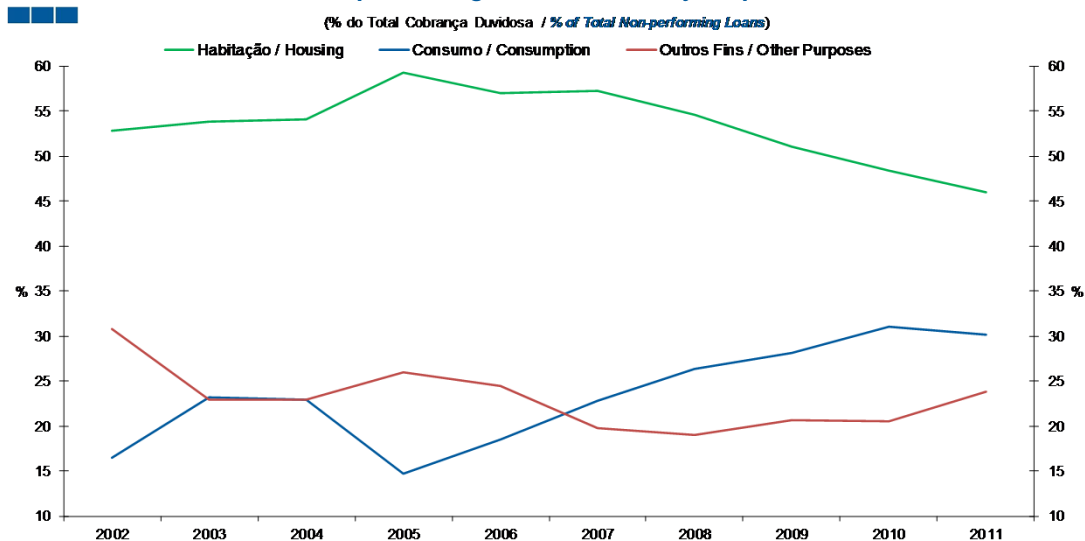
Gráfico / Graph 3.5.
Empréstimos Concedidos de Cobrança Duvidosa por Destino
Non-performing Granted Loans by Purpose



Nota: Inclui crédito a emigrantes.
Note: Includes credit to emigrants.

3. Particulares / Households

Gráfico / Graph 3.6.
Empréstimos Concedidos de Cobrança Duvidosa por Destino
Non-performing Granted Loans by Purpose



	2002	2003	2004	2005	2006	2007	2008	2009	2010	2011
Habitação / Housing	52,8	53,8	54,1	59,3	57,0	57,3	54,6	51,1	48,4	45,9
Consumo / Consumption	16,5	23,3	22,9	14,7	18,5	22,9	26,4	28,2	31,0	30,2
Outros Fins / Other Purposes	30,7	23,0	23,0	26,0	24,5	19,8	19,0	20,7	20,5	23,8

3. Particulares / Households

Gráfico / Graph 3.7.
Prazo dos Empréstimos Concedidos
Granted Loans Term

