

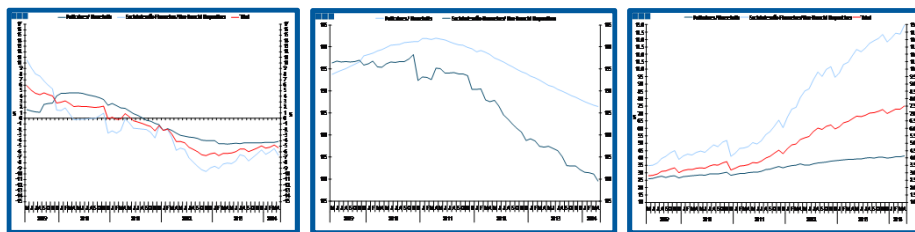
Estatísticas Temáticas de Conjuntura

Short-term Thematic Statistics

- Nº 6/2014 -

24 de junho de 2014

June, 24, 2014



Crédito ao Setor Privado *Credit to Private Sector*

- Abril de 2014 -

- April, 2014 -

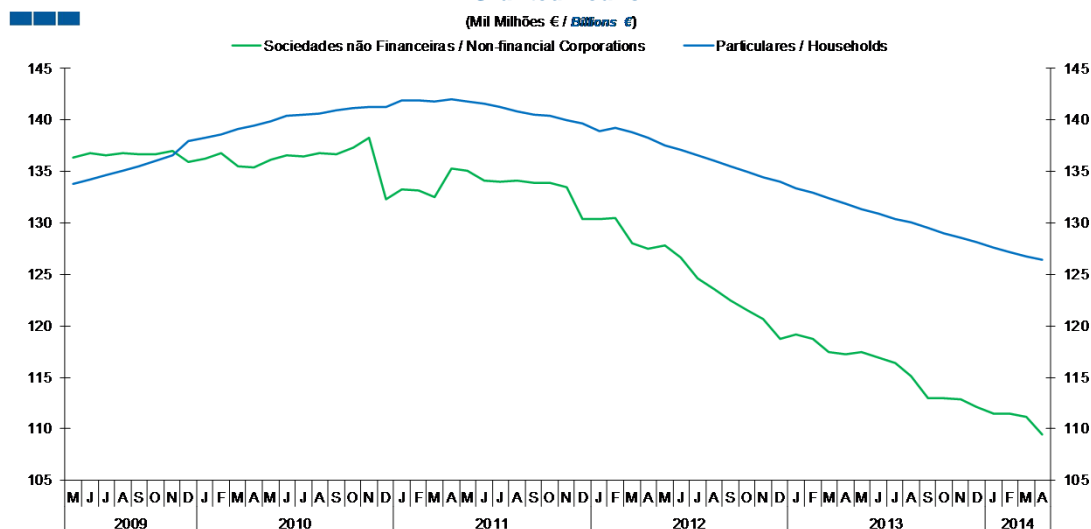
Fonte / *Source*: Banco de Portugal

Índice / Index

	Página / Page
1. Total	
Empréstimos Concedidos / <i>Granted Loans</i>	3-4
Empréstimos Concedidos de Cobrança Duvidosa / <i>Non-performing Granted Loans</i>	5-6
Prazo dos Empréstimos Concedidos / <i>Granted Loans Term</i>	7
2. Sociedades Não Financeiras / <i>Non-Financial Corporations</i>	
Empréstimos Concedidos por Ramo de Atividade / <i>Granted Loans by Branch of Activity</i>	8-9
Empréstimos Concedidos de Cobrança Duvidosa por Ramo de Atividade / <i>Non-performing Granted Loans by Branch of Activity</i>	10-11
Prazo dos Empréstimos Concedidos / <i>Granted Loans Term</i>	12
3. Particulares / <i>Households</i>	
Empréstimos Concedidos por Destino / <i>Granted Loans by Purpose</i>	13-14
Empréstimos Concedidos de Cobrança Duvidosa por Destino / <i>Non-performing Granted Loans by Purpose</i>	15-16
Prazo dos Empréstimos Concedidos / <i>Granted Loans Term</i>	17

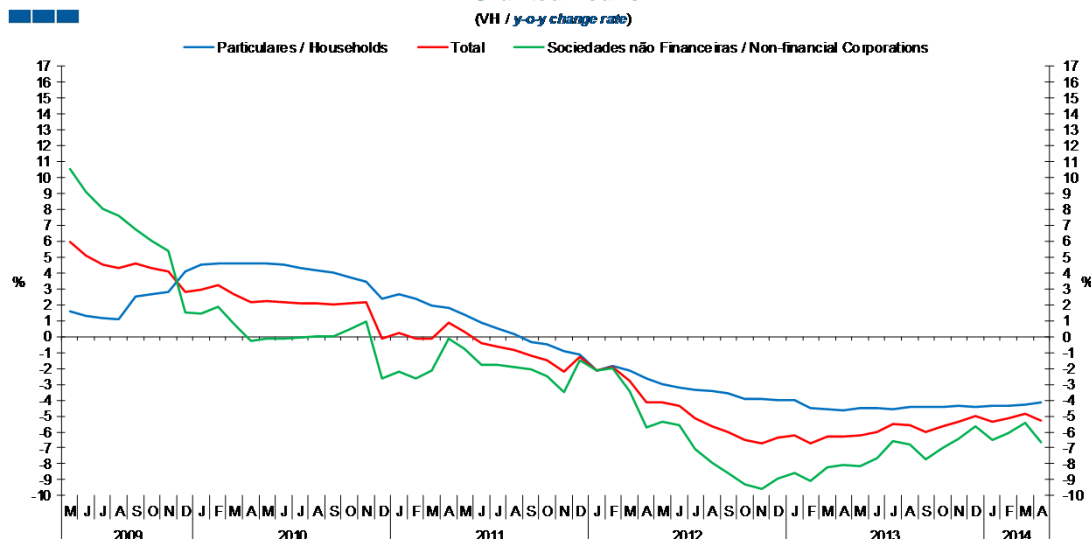
1. Total

Gráfico / Graph 1.1.
 Empréstimos Concedidos
 Granted Loans



	2012					2013												2014						
	M	J	J	A	S	O	N	D	J	F	M	A	M	J	J	A	S	O	N	D	J	F	M	A
Sociedades Não Financeiras / Non-financial Corporations	127.8	126.6	124.6	123.5	122.4	121.5	120.7	118.8	119.2	118.7	117.5	117.2	117.5	117.0	116.4	115.2	113.0	113.0	112.9	112.1	111.5	111.5	111.1	109.5
Particulares / Households	137.5	137.1	136.6	136.0	135.5	134.9	134.4	134.0	133.4	133.0	132.4	131.8	131.3	130.9	130.4	130.0	129.5	129.0	128.5	128.1	127.6	127.2	126.8	126.4

Gráfico / Graph 1.2.
 Empréstimos Concedidos
 Granted Loans

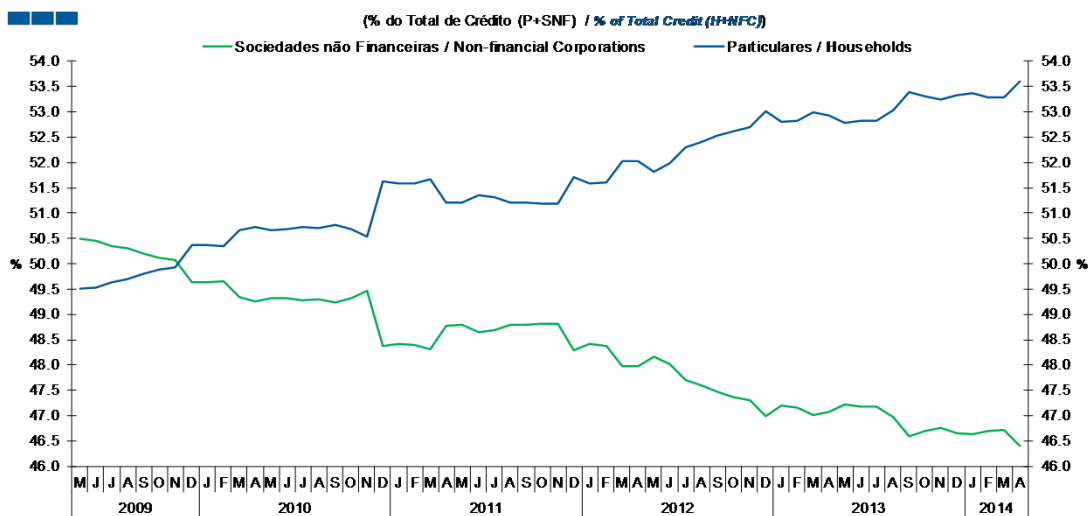


	2012					2013												2014						
	M	J	J	A	S	O	N	D	J	F	M	A	M	J	J	A	S	O	N	D	J	F	M	A
Sociedades Não Financeiras / Non-financial Corporations	-5.4	-5.6	-7.1	-7.9	-8.6	-9.3	-9.6	-8.9	-8.6	-9.0	-8.2	-8.1	-8.1	-7.6	-6.5	-6.8	-7.7	-7.0	-6.4	-5.6	-6.5	-6.1	-5.4	-6.6
Particulares / Households	-3.0	-3.2	-3.3	-3.4	-3.6	-3.9	-4.0	-4.0	-4.0	-4.5	-4.5	-4.7	-4.5	-4.5	-4.4	-4.4	-4.4	-4.4	-4.4	-4.4	-4.3	-4.3	-4.3	-4.1
Total	-4.2	-4.4	-5.1	-5.6	-6.0	-6.5	-6.7	-6.4	-6.2	-6.7	-6.3	-6.3	-6.2	-6.0	-5.5	-5.5	-6.0	-5.7	-5.3	-5.0	-5.3	-5.2	-4.8	-5.3

Nota: Particulares - Inclui crédito a emigrantes; Sociedades não Financeiras - Inclui crédito titulado
 Note: Households - Includes credit to emigrants; Non-Financial Corporations - Includes loans represented by securities

1. Total

Gráfico / Graph 1.3.
 Empréstimos Concedidos
 Granted Loans

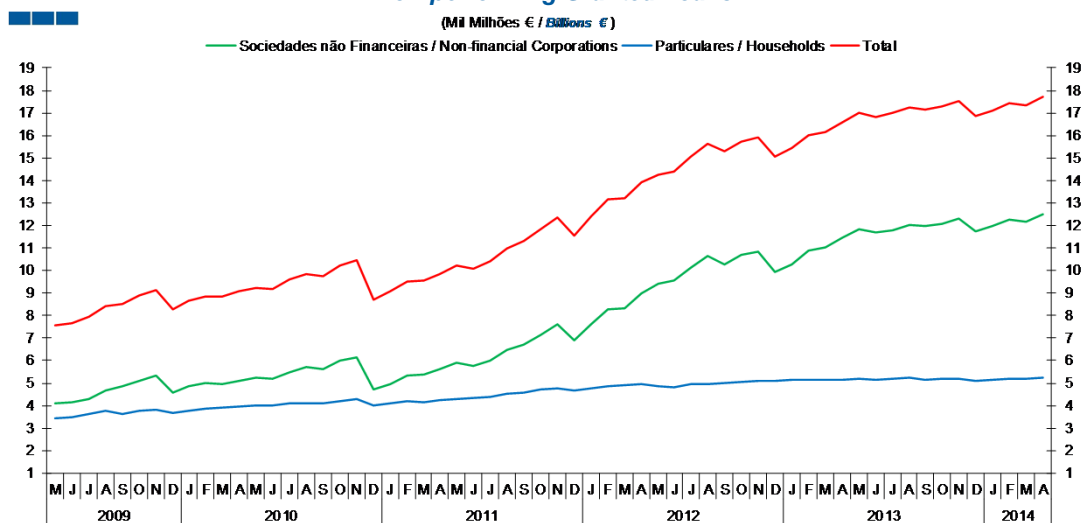


Nota: Particulares - Inclui crédito a emigrantes; Sociiedades não Financeiras - Inclui crédito titulado

	2012							2013							2014									
	M	J	J	A	S	O	N	D	J	F	M	A	M	J	J	A	S	O	N	D	J	F	M	A
Sociiedades Não Financeiras / Non-financial Corporations	48.2	48.0	47.7	47.6	47.5	47.4	47.3	47.0	47.2	47.2	47.0	47.1	47.2	47.2	47.2	47.0	46.6	46.7	46.8	46.7	46.6	46.7	46.7	46.4
Particulares / Households	51.8	52.0	52.3	52.4	52.5	52.6	52.7	53.0	52.8	52.8	53.0	52.9	52.8	52.8	52.8	53.0	53.4	53.3	53.2	53.3	53.4	53.3	53.3	53.6

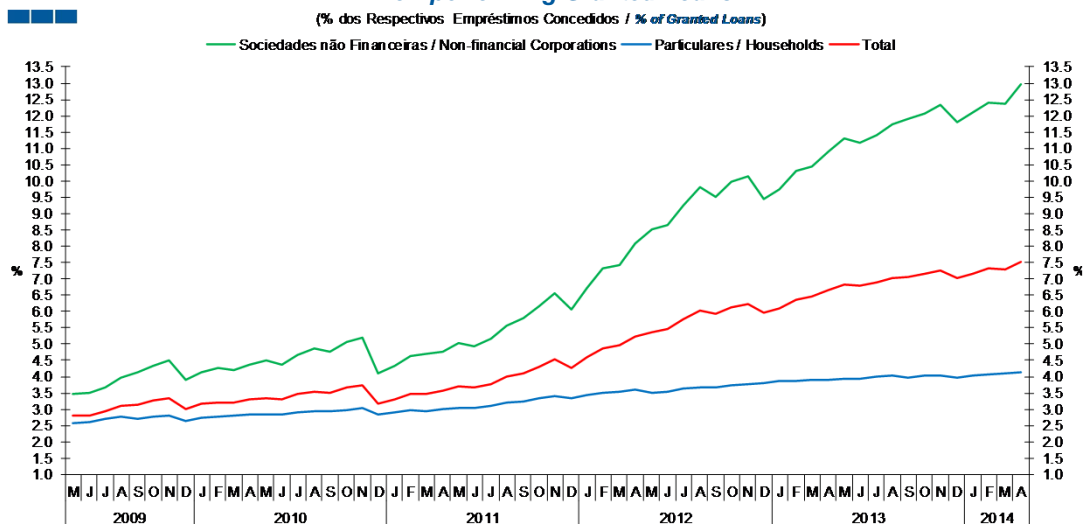
1. Total

Gráfico / Graph 1.4.
 Empréstimos Concedidos de Cobrança Duvidosa
 Non-performing Granted Loans



	2012												2013												2014			
	M	J	J	A	S	O	N	D	J	F	M	A	M	J	J	A	S	O	N	D	J	F	M	A				
Sociedades Não Financeiras / Non-financial Corporations	9.4	9.5	10.1	10.6	10.3	10.7	10.8	10.0	10.3	10.9	11.0	11.4	11.8	11.7	11.8	12.0	12.0	12.1	12.3	11.7	12.0	12.3	12.2	12.5				
Particulares / Households	4.8	4.8	4.9	5.0	5.0	5.0	5.1	5.1	5.1	5.2	5.2	5.1	5.2	5.2	5.2	5.2	5.2	5.2	5.1	5.1	5.1	5.2	5.2	5.2				
Total	14.3	14.4	15.1	15.6	15.3	15.7	15.9	15.1	15.4	16.0	16.2	16.6	17.0	16.8	17.0	17.3	17.2	17.3	17.5	16.8	17.1	17.4	17.4	17.7				

Gráfico / Graph 1.5.
 Empréstimos Concedidos de Cobrança Duvidosa
 Non-performing Granted Loans

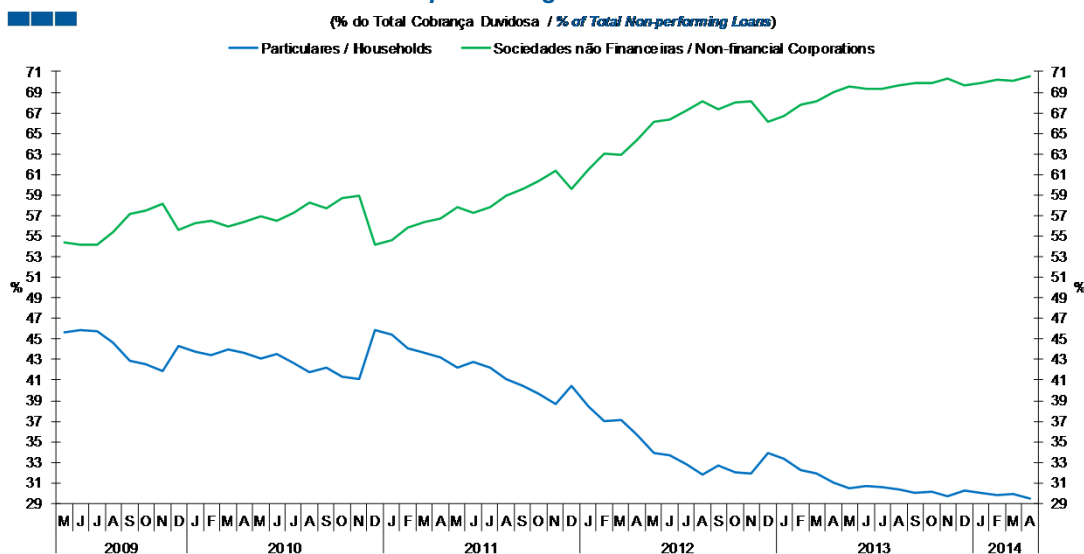


	2012												2013												2014			
	M	J	J	A	S	O	N	D	J	F	M	A	M	J	J	A	S	O	N	D	J	F	M	A				
Sociedades Não Financeiras / Non-financial Corporations	8.5	8.7	9.3	9.8	9.5	10.0	10.2	9.4	9.8	10.3	10.5	10.9	11.3	11.2	11.4	11.7	11.9	12.1	12.3	11.8	12.1	12.4	12.4	13.0				
Particulares / Households	3.5	3.5	3.6	3.7	3.7	3.7	3.8	3.8	3.9	3.9	3.9	3.9	3.9	3.9	4.0	4.0	4.0	4.0	4.0	4.0	4.0	4.1	4.1	4.1				
Total	5.4	5.5	5.8	6.0	5.9	6.1	6.2	6.0	6.1	6.4	6.5	6.7	6.8	6.8	6.9	7.0	7.1	7.1	7.3	7.0	7.1	7.3	7.3	7.5				

Nota: Particulares - Inclui crédito a emigrantes; Sociedades não Financeiras - Não inclui crédito titulado
 Note: Households - Includes credit to emigrants; Non-Financial Corporations - Does not include loans represented by securities

1. Total

Gráfico / Graph 1.6.
 Empréstimos Concedidos de Cobrança Duvidosa
 Non-performing Granted Loans

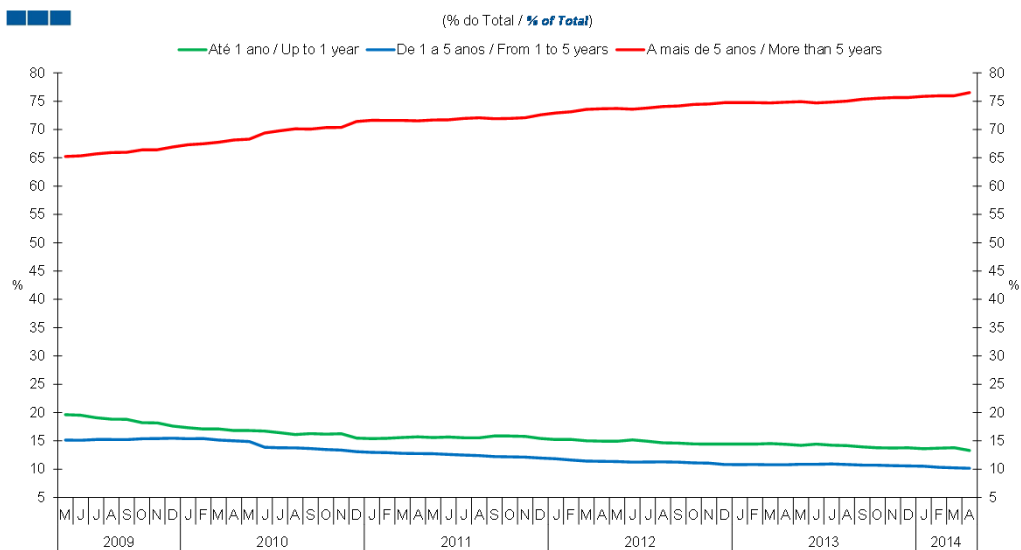


	2012					2013					2014													
	M	J	J	A	S	O	N	D	J	F	M	A	M	J	J	A	S	O	N	D	J	F	M	A
Sociedades Não Financeiras / Non-financial Corporations	66.1	66.4	67.2	68.1	67.3	68.0	68.1	66.1	66.7	67.8	68.1	69.0	69.5	69.3	69.4	69.7	69.9	69.9	70.3	69.7	69.9	70.2	70.1	70.5
Particulares / Households	33.9	33.6	32.8	31.9	32.7	32.0	31.9	33.9	33.3	32.2	31.9	31.0	30.5	30.7	30.6	30.3	30.1	30.1	29.7	30.3	30.1	29.8	29.9	29.5

Nota: Particulares - Inclui crédito a emigrantes; Sociedades não Financeiras - Não inclui crédito titulado
 Note: Households - Includes credit to emigrants; Non-Financial Corporations - Does not include loans represented by securities

1. Total

Gráfico / Graph 1.7.
 Prazo dos Empréstimos Concedidos
 Granted Loans Term

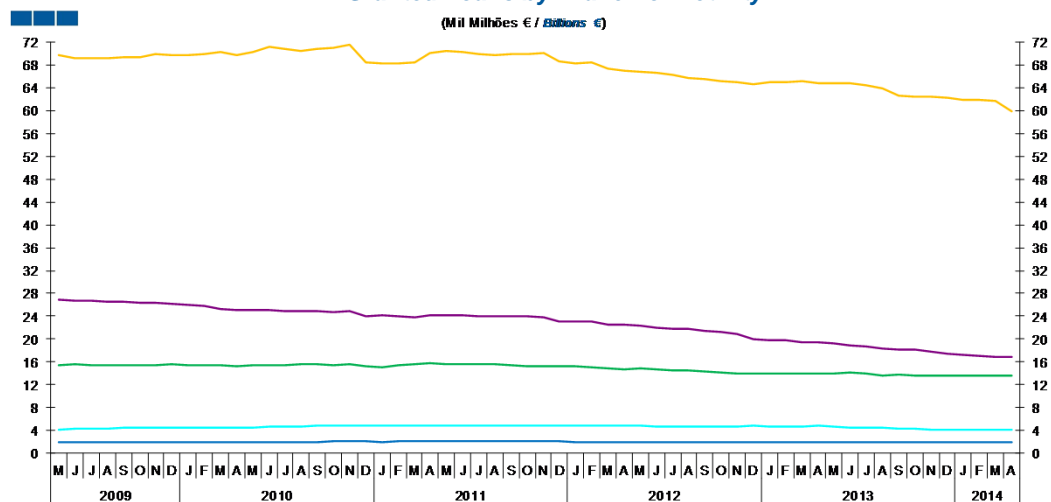


	2012												2013												2014			
	M	J	J	A	S	O	N	D	J	F	M	A	M	J	J	A	S	O	N	D	J	F	M	A				
Até 1 ano / Up to 1 year	14.9	15.2	14.9	14.6	14.6	14.5	14.4	14.4	14.4	14.4	14.5	14.4	14.2	14.4	14.2	14.2	13.9	13.8	13.7	13.8	13.6	13.7	13.8	13.3				
1 a 5 anos / 1 to 5 years	11.3	11.2	11.3	11.3	11.2	11.1	11.1	10.8	10.8	10.8	10.8	10.8	10.9	10.9	10.9	10.8	10.7	10.7	10.6	10.6	10.5	10.3	10.2	10.2				
Mais de 5 anos / More than 5 years	73.7	73.6	73.8	74.1	74.2	74.4	74.5	74.8	74.7	74.7	74.7	74.8	74.9	74.7	74.8	75.0	75.3	75.5	75.6	75.6	75.9	76.0	76.0	76.5				

2. Sociedades não Financeiras / Non-Financial Corporations

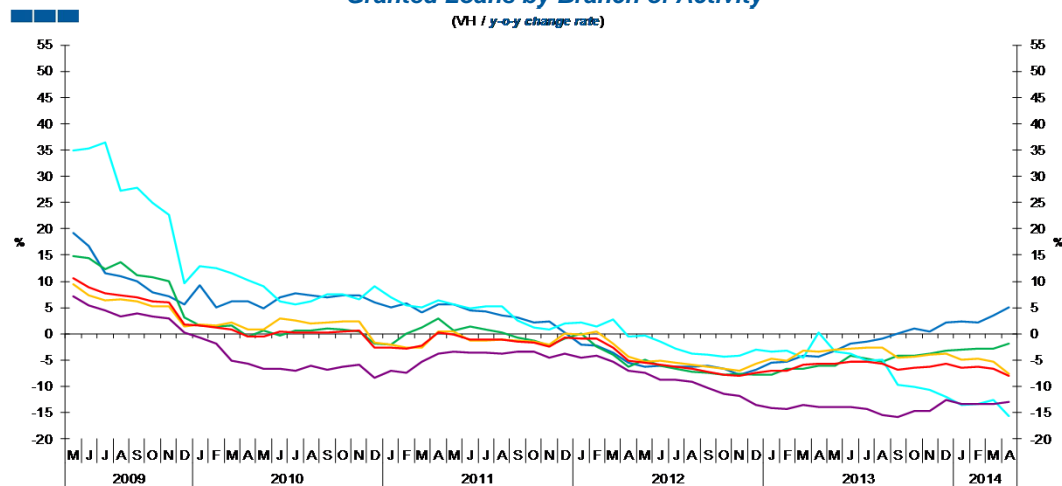
- Agricultura, silvicultura e pesca / Agriculture, forestry and fishing (A)
- Energia, água e resíduos / Energy, water and waste (D+E)
- Serviços / Services (G-J;K(64202):L-N;P-U)
- Indústrias / Industries (B+C)
- Construção / Construction (F)
- Total

Gráfico / Graph 2.1.
 Empréstimos Concedidos por Ramo de Atividade
 Granted Loans by Branch of Activity



	2012												2013												2014			
	M	J	J	A	S	O	N	D	J	F	M	A	M	J	J	A	S	O	N	D	J	F	M	A				
Agricultura, silvicultura e pesca / Agriculture, forestry and fishing	2.0	2.0	2.0	2.0	2.0	1.9	1.9	1.9	1.9	1.9	1.9	1.9	1.9	1.9	2.0	2.0	2.0	2.0	1.9	1.9	1.9	1.9	2.0	2.0				
Indústria / Industry	14.8	14.7	14.6	14.4	14.3	14.1	14.1	14.0	14.0	14.0	13.9	13.9	14.1	13.9	13.7	13.7	13.5	13.5	13.5	13.6	13.6	13.6	13.6	13.6				
Energia, água e resíduos / Energy, water and waste	4.8	4.8	4.7	4.7	4.7	4.7	4.7	4.8	4.8	4.7	4.7	4.8	4.6	4.6	4.5	4.5	4.3	4.2	4.2	4.2	4.1	4.1	4.1	4.1				
Construção / Construction	22.4	22.1	21.8	21.7	21.5	21.2	21.0	20.0	19.8	19.7	19.5	19.4	19.3	19.0	18.7	18.4	18.1	18.1	17.9	17.5	17.2	17.1	16.9	16.9				
Serviços / Services	66.7	66.6	66.2	65.7	65.5	65.2	65.0	64.7	65.1	65.0	65.2	64.7	64.8	64.7	64.5	63.9	62.6	62.4	62.5	62.2	61.9	62.0	61.7	59.9				

Gráfico / Graph 2.2.
 Empréstimos Concedidos por Ramo de Atividade
 Granted Loans by Branch of Activity



	2012												2013												2014			
	M	J	J	A	S	O	N	D	J	F	M	A	M	J	J	A	S	O	N	D	J	F	M	A				
Agricultura, silvicultura e pesca / Agriculture, forestry and fishing	-6.2	-6.1	-6.3	-6.2	-6.0	-6.7	-7.8	-6.8	-5.5	-5.3	-4.1	-4.4	-3.3	-1.9	-1.4	-1.0	0.1	1.1	0.5	2.1	2.3	2.1	3.4	5.0				
Indústria / Industry	-5.0	-6.1	-6.7	-7.3	-7.4	-7.8	-7.6	-7.7	-7.7	-6.7	-6.6	-6.0	-6.1	-4.2	-4.7	-5.3	-4.2	-4.2	-3.8	-3.3	-3.0	-2.9	-2.8	-1.8				
Energia, água e resíduos / Energy, water and waste	-0.2	-1.5	-2.7	-3.8	-3.9	-4.4	-4.2	-2.9	-3.3	-3.3	-4.5	0.2	-3.4	-3.7	-5.2	-4.9	-9.7	-10.2	-10.7	-12.0	-13.5	-13.3	-12.5	-15.7				
Construção / Construction	-7.5	-8.7	-8.8	-9.1	#####	#####	-11.7	-13.6	-14.1	-14.2	-13.6	-13.9	-14.0	-14.0	-14.3	-15.4	-15.8	-14.7	-14.7	-12.7	-13.3	-13.3	-13.3	-12.9				
Serviços / Services	-5.4	-5.2	-5.4	-5.8	-6.3	-6.7	-7.1	-5.6	-4.7	-5.1	-3.2	-3.5	-2.9	-2.7	-2.6	-2.6	-4.5	-4.3	-4.0	-3.8	-4.9	-4.6	-5.4	-7.5				
Total	-5.6	-5.9	-6.2	-6.6	-7.2	-7.7	-8.0	-7.4	-7.0	-7.1	-5.8	-5.8	-5.6	-5.2	-5.3	-5.6	-6.9	-6.5	-6.3	-5.7	-6.5	-6.3	-6.6	-7.9				

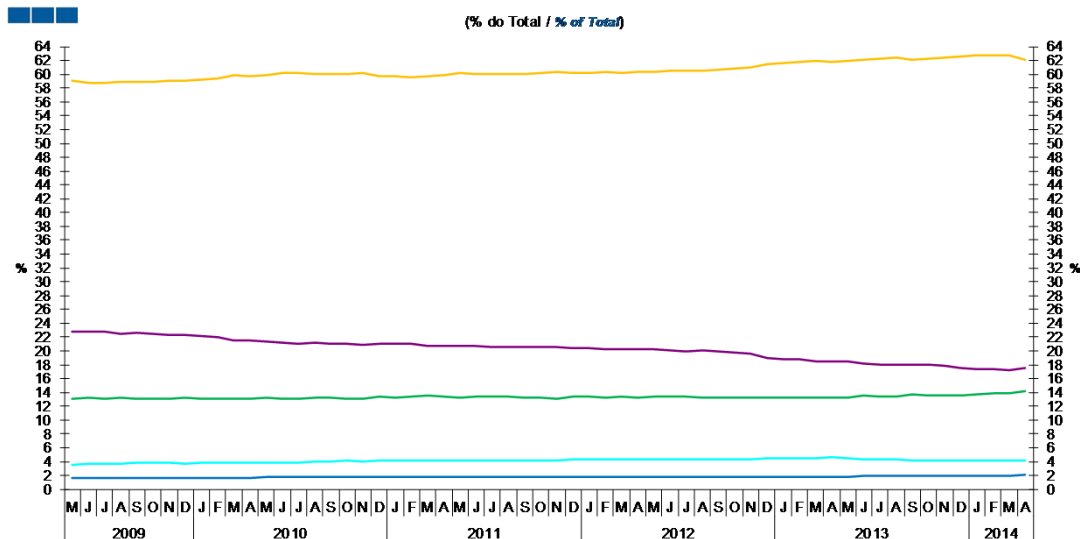
Nota: Não inclui crédito titulado.

Note: Does not include loans represented by securities

2. Sociedades não Financeiras / Non-Financial Corporations

- Agricultura, silvicultura e pesca / Agriculture, forestry and fishing (A)
- Energia, água e resíduos / Energy, water and waste (D+E)
- Serviços / Services (G-J;K(64202);L-N;P-U)
- Indústrias / Industries (B+C)
- Construção / Construction (F)
- Total

Gráfico / Graph 2.3.
Empréstimos Concedidos por Ramo de Atividade
Granted Loans by Branch of Activity



	2012								2013								2014								
	M	J	J	A	S	O	N	D	J	F	M	A	M	J	J	A	S	O	N	D	J	F	M	A	
Agricultura, silvicultura e pesca / Agriculture, forestry and fishing	1.8	1.8	1.8	1.8	1.8	1.8	1.8	1.8	1.8	1.8	1.8	1.8	1.8	1.8	1.9	1.9	1.9	2.0	2.0	1.9	2.0	1.9	2.0	2.0	2.1
Indústria / Industry	13.4	13.4	13.3	13.3	13.3	13.2	13.2	13.3	13.3	13.3	13.3	13.3	13.3	13.5	13.4	13.4	13.6	13.5	13.5	13.6	13.7	13.8	13.8	14.1	
Energia, água e resíduos / Energy, water and waste	4.3	4.3	4.3	4.3	4.4	4.4	4.4	4.5	4.5	4.4	4.5	4.6	4.4	4.4	4.3	4.4	4.2	4.2	4.2	4.2	4.2	4.1	4.2	4.2	
Construção / Construction	20.2	20.0	20.0	20.0	19.9	19.8	19.7	19.0	18.8	18.7	18.5	18.5	18.4	18.2	18.1	17.9	18.0	18.0	17.9	17.6	17.4	17.3	17.2	17.5	
Serviços / Services	60.3	60.5	60.5	60.5	60.6	60.8	61.0	61.4	61.7	61.7	61.9	61.8	62.0	62.0	62.3	62.4	62.2	62.3	62.5	62.6	62.7	62.8	62.8	62.1	

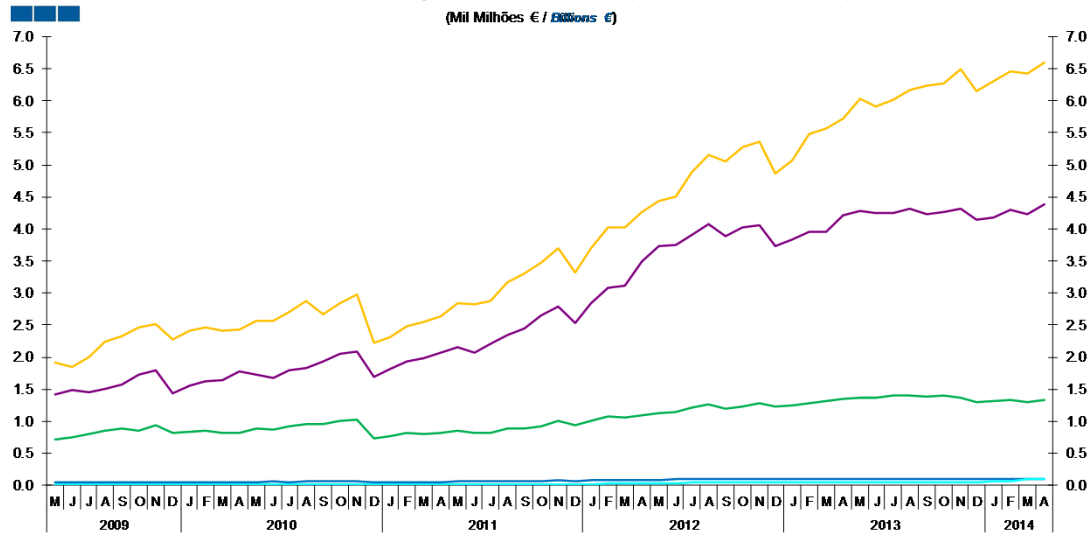
Nota: Não inclui crédito titulado.

Note: Does not include loans represented by securities

2. Sociedades não Financeiras / Non-Financial Corporations

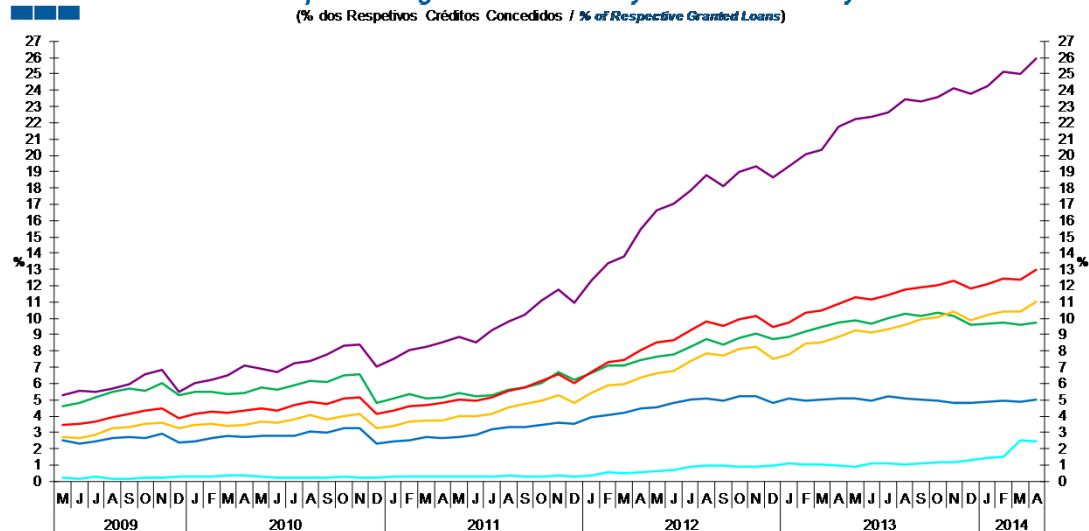
- Agricultura, silvicultura e pesca / Agriculture, forestry and fishing (A)
- Energia, água e resíduos / Energy, water and waste (D+E)
- Serviços / Services (G-J;K(64202);L-N;P-U)
- Indústrias / Industries (B+C)
- Construção / Construction (F)
- Total

Gráfico / Graph 2.4.
Empréstimos Concedidos de Cobrança Duvidosa por Ramo de Atividade
Non-performing Granted Loans by Branch of Activity



	2012												2013												2014			
	M	J	J	A	S	O	N	D	J	F	M	A	M	J	J	A	S	O	N	D	J	F	M	A				
Agricultura, silvicultura e pesca / Agriculture, forestry and fishing	0.1	0.1	0.1	0.1	0.1	0.1	0.1	0.1	0.1	0.1	0.1	0.1	0.1	0.1	0.1	0.1	0.1	0.1	0.1	0.1	0.1	0.1	0.1	0.1				
Indústria / Industry	1.1	1.2	1.2	1.3	1.2	1.2	1.3	1.2	1.2	1.3	1.3	1.4	1.4	1.4	1.4	1.4	1.4	1.4	1.3	1.3	1.3	1.3	1.3					
Energia, água e resíduos / Energy, water and waste	0.0	0.0	0.0	0.0	0.0	0.0	0.0	0.0	0.1	0.1	0.0	0.0	0.0	0.1	0.1	0.0	0.1	0.1	0.1	0.1	0.1	0.1	0.1					
Construção / Construction	3.7	3.8	3.9	4.1	3.9	4.0	4.1	3.7	3.8	4.0	4.0	4.2	4.3	4.2	4.2	4.3	4.2	4.3	4.3	4.2	4.2	4.3	4.2					
Serviços / Services	4.4	4.5	4.9	5.2	5.1	5.3	5.4	4.9	5.1	5.5	5.6	5.7	6.0	5.9	6.0	6.2	6.2	6.3	6.5	6.1	6.3	6.5	6.4					

Gráfico / Graph 2.5.
Empréstimos Concedidos de Cobrança Duvidosa por Ramo de Atividade
Non-performing Granted Loans by Branch of Activity



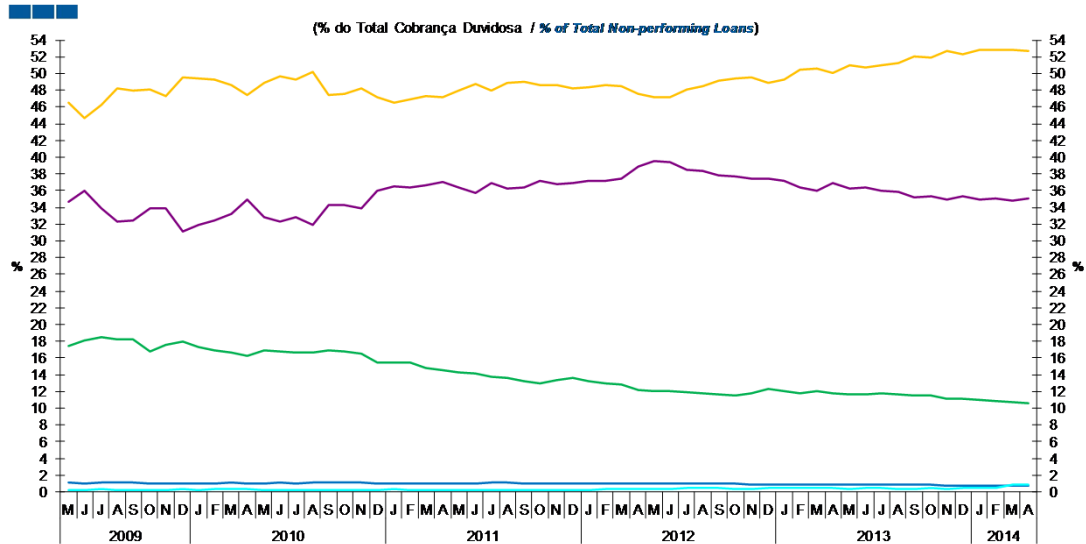
	2012												2013												2014			
	M	J	J	A	S	O	N	D	J	F	M	A	M	J	J	A	S	O	N	D	J	F	M	A				
Agricultura, silvicultura e pesca / Agriculture, forestry and fishing	4.5	4.8	5.0	5.1	5.0	5.2	5.2	4.8	5.1	5.0	5.0	5.1	5.1	5.0	5.2	5.1	5.0	4.9	4.8	4.8	4.9	5.0	4.9					
Indústria / Industry	7.6	7.8	8.3	8.7	8.4	8.8	9.1	8.7	8.9	9.2	9.5	9.8	9.9	9.6	10.0	10.3	10.1	10.3	10.2	9.6	9.7	9.8	9.6					
Energia, água e resíduos / Energy, water and waste	0.6	0.7	0.9	0.9	1.0	0.9	0.9	1.0	1.1	1.1	1.0	1.0	0.9	1.1	1.1	1.0	1.1	1.2	1.2	1.3	1.4	1.5	2.5					
Construção / Construction	16.6	17.0	17.9	18.8	18.1	19.0	19.3	18.7	19.3	20.1	20.3	21.7	22.2	22.4	22.7	23.5	23.3	23.6	24.1	23.8	24.3	25.1	25.9					
Serviços / Services	6.7	6.8	7.4	7.9	7.7	8.1	8.2	7.5	7.8	8.4	8.6	8.8	9.3	9.1	9.3	9.6	10.0	10.0	10.4	9.9	10.2	10.4	11.0					
Total	8.5	8.7	9.3	9.8	9.5	10.0	10.2	9.4	9.8	10.3	10.5	10.9	11.3	11.2	11.4	11.7	11.9	12.1	12.3	11.8	12.1	12.4	13.0					

Nota: Não inclui crédito titulado.
Note: Does not include loans represented by securities

2. Sociedades não Financeiras / Non-Financial Corporations

- Agricultura, silvicultura e pesca / Agriculture, forestry and fishing (A)
- Energia, água e resíduos / Energy, water and waste (D+E)
- Serviços/ Services (G-J;K(64202):L-N;P-U)
- Indústrias / Industries (B+C)
- Construção / Construction (F)
- Total

Gráfico / Graph 2.6.
Empréstimos Concedidos de Cobrança Duvidosa por Ramo de Atividade
Non-performing Granted Loans by Branch of Activity



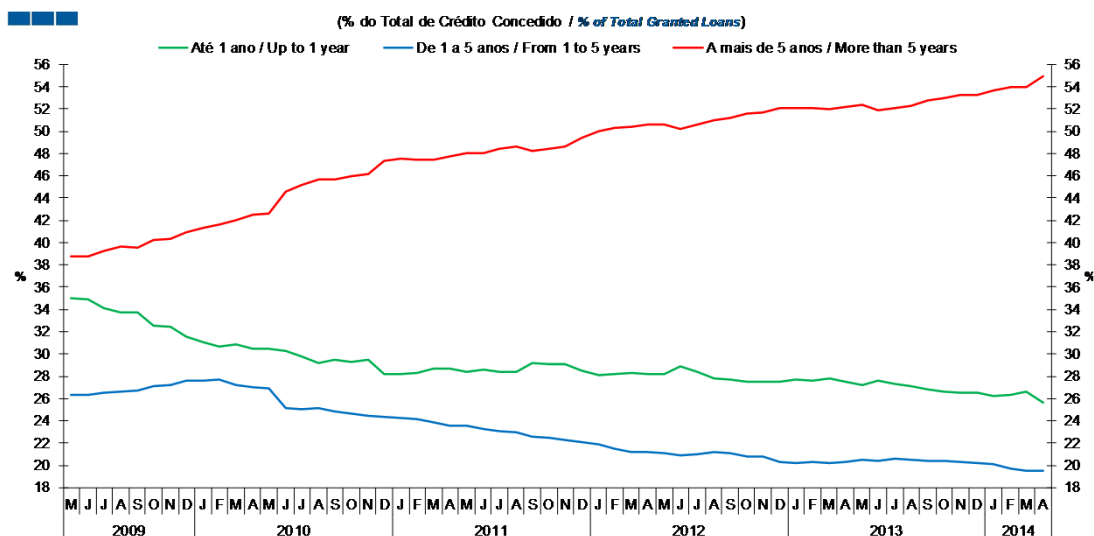
	2012												2013					2014						
	M	J	J	A	S	O	N	D	J	F	M	A	M	J	J	A	S	O	N	D	J	F	M	A
Agricultura, silvicultura e pesca / Agriculture, forestry and fishing	1.0	1.0	1.0	0.9	1.0	0.9	0.9	0.9	0.9	0.9	0.9	0.8	0.8	0.8	0.9	0.8	0.8	0.8	0.8	0.8	0.8	0.8	0.8	0.8
Indústria / Industry	12.0	12.1	11.9	11.8	11.7	11.6	11.8	12.3	12.1	11.8	12.0	11.8	11.6	11.7	11.8	11.7	11.6	11.6	11.2	11.1	11.0	10.8	10.7	10.7
Energia, água e resíduos / Energy, water and waste	0.3	0.3	0.4	0.4	0.5	0.4	0.4	0.5	0.5	0.5	0.4	0.4	0.4	0.4	0.4	0.4	0.4	0.4	0.5	0.5	0.5	0.9	0.8	
Construção / Construction	39.6	39.4	38.5	38.3	37.8	37.7	37.4	37.5	37.2	36.4	36.0	36.9	36.2	36.4	35.9	35.9	35.2	35.3	35.0	35.3	34.9	35.1	34.8	35.0
Serviços / Services	47.1	47.2	48.1	48.5	49.1	49.4	49.5	48.8	49.3	50.4	50.6	50.0	50.9	50.7	51.0	51.3	52.0	51.9	52.7	52.3	52.8	52.8	52.8	52.7

Nota: Não inclui crédito titulado

Note: Does not include loans represented by securities

2. Sociedades não Financeiras / Non-Financial Corporations

Gráfico / Graph 2.7.
 Prazo dos Empréstimos Concedidos
 Granted Loans Term

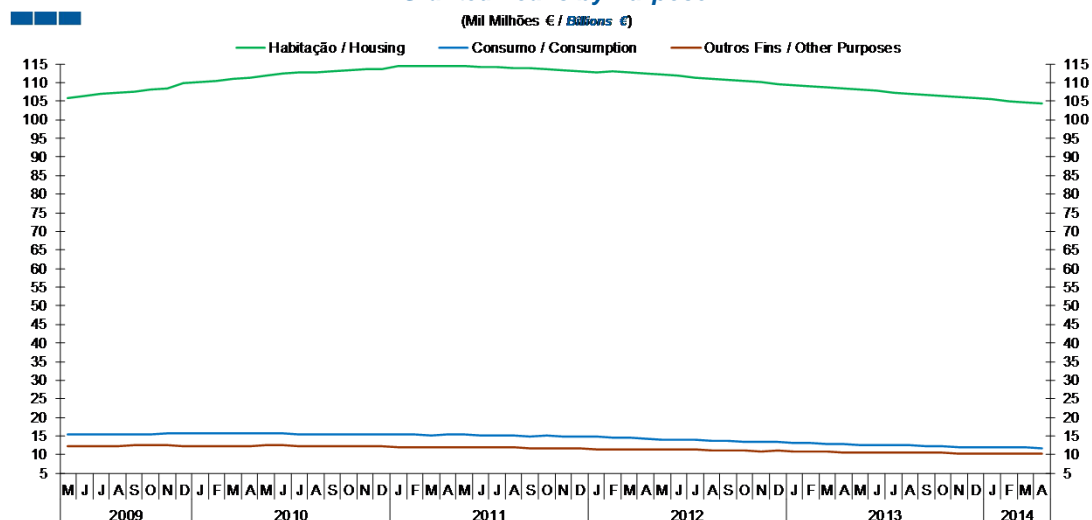


	2012				2013				2014															
	M	J	J	A	S	O	N	D	J	F	M	A	M	J	J	A	S	O	N	D	J	F	M	A
Até 1 ano / Up to 1 year	28.2	28.9	28.4	27.8	27.7	27.5	27.5	27.5	27.7	27.6	27.8	27.6	27.2	27.6	27.3	27.2	26.8	26.6	26.5	26.5	26.2	26.4	26.6	25.6
1 a 5 anos / 1 to 5 years	21.1	20.9	21.1	21.2	21.1	20.9	20.8	20.3	20.3	20.3	20.2	20.3	20.5	20.5	20.6	20.5	20.4	20.4	20.3	20.2	20.1	19.7	19.5	19.5
Mais de 5 anos / More than 5 years	50.6	50.2	50.6	51.0	51.2	51.6	51.7	52.1	52.1	52.1	52.0	52.2	52.3	51.9	52.1	52.3	52.7	53.0	53.2	53.3	53.6	53.9	53.9	54.9

Nota: Inclui crédito titulado
 Note: Includes loans represented by securities

3. Particulares / Households

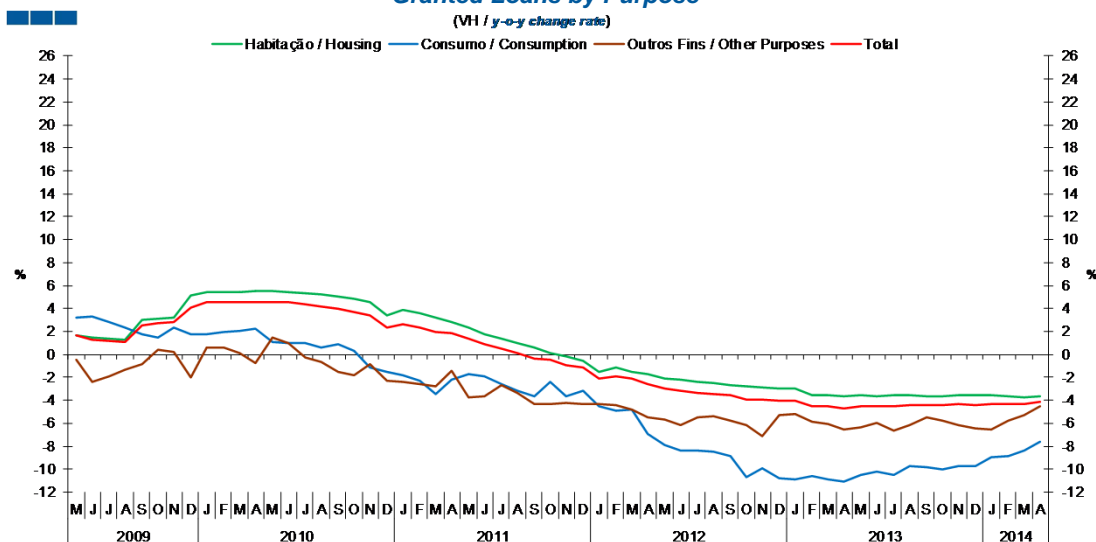
Gráfico / Graph 3.1.
 Empréstimos Concedidos por Destino
 Granted Loans by Purpose



Nota: Inclui crédito a emigrantes.

	2012												2013												2014			
	M	J	J	A	S	O	N	D	J	F	M	A	M	J	J	A	S	O	N	D	J	F	M	A				
Habitação / Housing	112.0	111.8	111.4	111.0	110.7	110.4	110.0	109.7	109.3	109.1	108.8	108.4	108.0	107.7	107.4	107.1	106.7	106.4	106.2	105.8	105.4	105.1	104.7	104.4				
Consumo / Consumption	14.1	14.0	13.9	13.7	13.6	13.5	13.4	13.4	13.1	13.1	12.9	12.8	12.6	12.6	12.4	12.4	12.3	12.2	12.1	12.1	11.9	11.9	11.8	11.8				
Outros Fins / Other Purposes	11.4	11.3	11.3	11.2	11.1	11.0	10.9	11.0	10.9	10.8	10.7	10.7	10.6	10.6	10.6	10.5	10.5	10.4	10.3	10.3	10.2	10.2	10.2	10.2				

Gráfico / Graph 3.2.
 Empréstimos Concedidos por Destino
 Granted Loans by Purpose

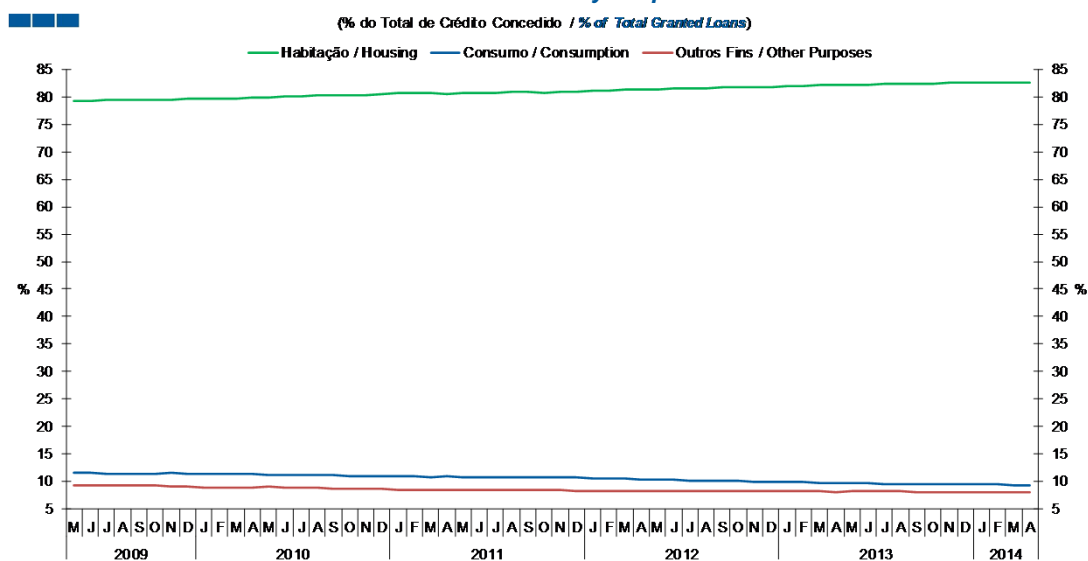


	2012												2013												2014			
	M	J	J	A	S	O	N	D	J	F	M	A	M	J	J	A	S	O	N	D	J	F	M	A				
Habitação / Housing	-2.1	-2.2	-2.4	-2.5	-2.6	-2.8	-2.8	-3.0	-3.0	-3.6	-3.6	-3.7	-3.6	-3.6	-3.6	-3.6	-3.6	-3.5	-3.6	-3.6	-3.7	-3.7	-3.7					
Consumo / Consumption	-7.9	-8.3	-8.4	-8.5	-8.9	-10.7	-9.9	-10.8	-10.9	-10.6	-10.8	-11.1	-10.5	-10.2	-10.5	-9.7	-9.8	-10.0	-9.8	-9.7	-9.0	-8.8	-8.4	-7.6				
Outros Fins / Other Purposes	-5.7	-6.1	-5.5	-5.4	-5.8	-6.2	-7.1	-5.3	-5.2	-5.9	-6.1	-6.5	-6.4	-6.0	-6.6	-6.2	-5.5	-5.7	-6.1	-6.5	-6.5	-5.8	-5.3	-4.5				
Total	-3.0	-3.2	-3.3	-3.4	-3.6	-3.9	-4.0	-4.0	-4.0	-4.5	-4.5	-4.7	-4.5	-4.5	-4.5	-4.4	-4.4	-4.4	-4.4	-4.4	-4.3	-4.3	-4.3	-4.1				

Nota: Inclui crédito a emigrantes
 Note: Includes credit to emigrants

3. Particulares / Households

Gráfico / Graph 3.3.
 Empréstimos Concedidos por Destino
 Granted Loans by Purpose

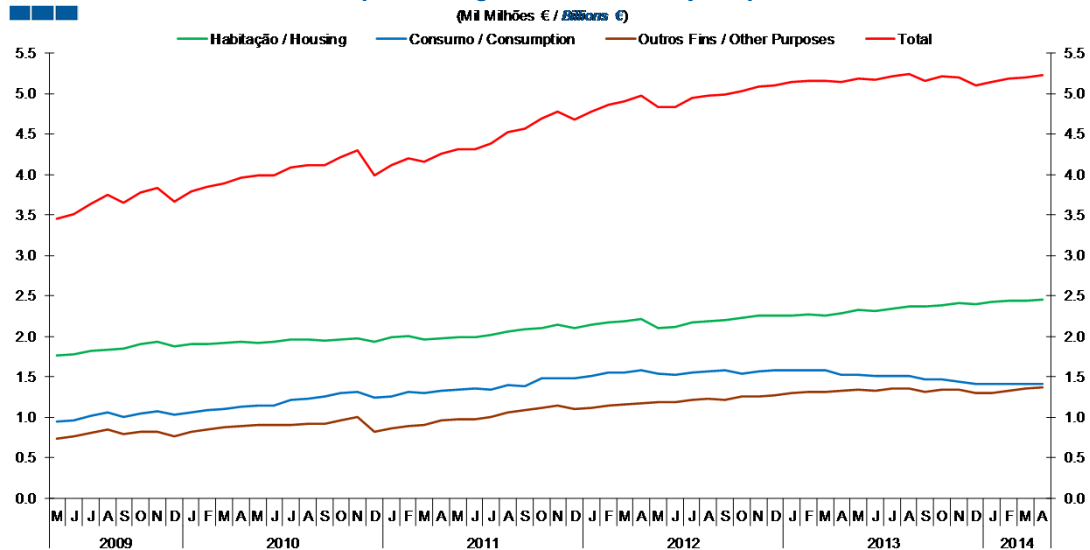


	2012												2013												2014			
	M	J	J	A	S	O	N	D	J	F	M	A	M	J	J	A	S	O	N	D	J	F	M	A				
Habitação / Housing	81.5	81.6	81.6	81.6	81.8	81.8	81.9	81.8	82.0	82.0	82.1	82.2	82.3	82.3	82.4	82.3	82.4	82.5	82.6	82.6	82.6	82.6	82.6	82.6				
Consumo / Consumption	10.3	10.2	10.2	10.1	10.1	10.0	10.0	10.0	9.8	9.8	9.8	9.7	9.6	9.6	9.5	9.5	9.5	9.4	9.4	9.4	9.4	9.4	9.3	9.3				
Outros Fins / Other Purposes	8.3	8.2	8.3	8.3	8.2	8.2	8.1	8.2	8.2	8.1	8.1	8.1	8.1	8.1	8.1	8.1	8.1	8.1	8.0	8.0	8.0	8.0	8.0	8.1				

Nota: Inclui crédito a emigrantes
 Note: Includes credit to emigrants

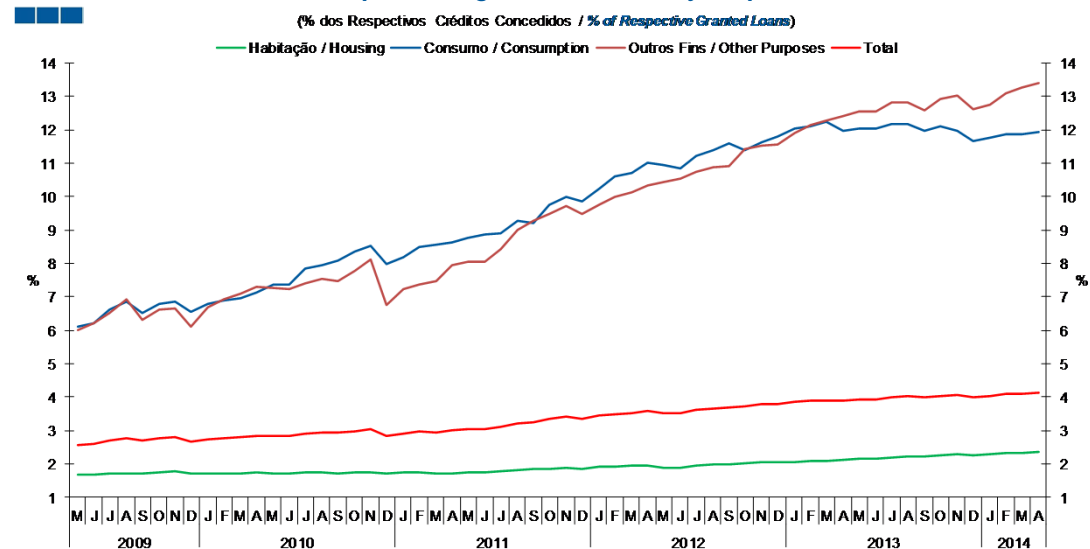
3. Particulares / Households

Gráfico / Graph 3.4.
 Empréstimos Concedidos de Cobrança Duvidosa por Destino
 Non-performing Granted Loans by Purpose



	2012												2013												2014			
	M	J	J	A	S	O	N	D	J	F	M	A	M	J	J	A	S	O	N	D	J	F	M	A				
Habitação / Housing	2.1	2.1	2.2	2.2	2.2	2.2	2.3	2.3	2.3	2.3	2.3	2.3	2.3	2.3	2.3	2.4	2.4	2.4	2.4	2.4	2.4	2.4	2.4	2.4	2.4	2.4		
Consumo / Consumption	1.5	1.5	1.6	1.6	1.6	1.5	1.6	1.6	1.6	1.6	1.6	1.5	1.5	1.5	1.5	1.5	1.5	1.5	1.4	1.4	1.4	1.4	1.4	1.4	1.4	1.4		
Outros Fins / Other Purposes	1.2	1.2	1.2	1.2	1.2	1.3	1.3	1.3	1.3	1.3	1.3	1.3	1.3	1.3	1.3	1.4	1.4	1.3	1.3	1.3	1.3	1.3	1.3	1.3	1.3	1.4		
Total	4.8	4.8	4.9	5.0	5.0	5.0	5.1	5.1	5.1	5.2	5.2	5.1	5.2	5.2	5.2	5.2	5.2	5.2	5.1	5.1	5.1	5.2	5.2	5.2	5.2			

Gráfico / Graph 3.5.
 Empréstimos Concedidos de Cobrança Duvidosa por Destino
 Non-performing Granted Loans by Purpose

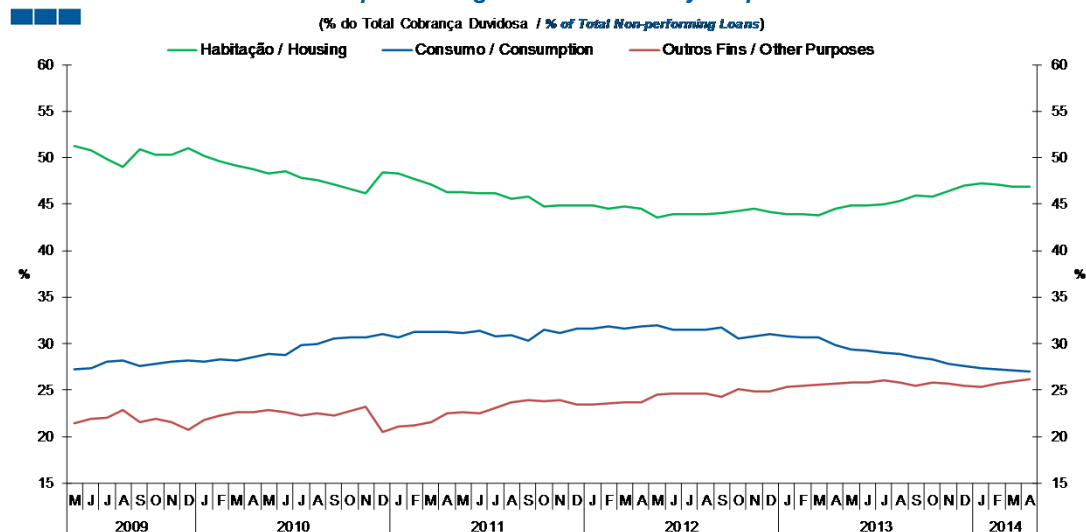


	2012												2013												2014			
	M	J	J	A	S	O	N	D	J	F	M	A	M	J	J	A	S	O	N	D	J	F	M	A				
Habitação / Housing	1.9	1.9	2.0	2.0	2.0	2.0	2.1	2.1	2.1	2.1	2.1	2.1	2.1	2.2	2.2	2.2	2.2	2.2	2.3	2.3	2.3	2.3	2.3	2.3	2.3			
Consumo / Consumption	11.0	10.9	11.2	11.4	11.6	11.4	11.6	11.8	12.0	12.1	12.3	12.0	12.0	12.0	12.2	12.2	12.0	12.1	12.0	11.7	11.8	11.9	11.9	11.9	11.9			
Outros Fins / Other Purposes	10.4	10.6	10.7	10.9	10.9	11.4	11.5	11.6	11.9	12.1	12.3	12.4	12.5	12.5	12.8	12.8	12.6	12.9	13.0	12.6	12.8	13.1	13.3	13.4	13.4			
Total	3.5	3.5	3.6	3.7	3.7	3.7	3.8	3.8	3.9	3.9	3.9	3.9	3.9	3.9	4.0	4.0	4.0	4.0	4.0	4.0	4.0	4.1	4.1	4.1	4.1			

Nota: Inclui crédito a emigrantes.
 Note: Includes credit to emigrants.

3. Particulares / Households

Gráfico / Graph 3.6.
 Empréstimos Concedidos de Cobrança Duvidosa por Destino
 Non-performing Granted Loans by Purpose

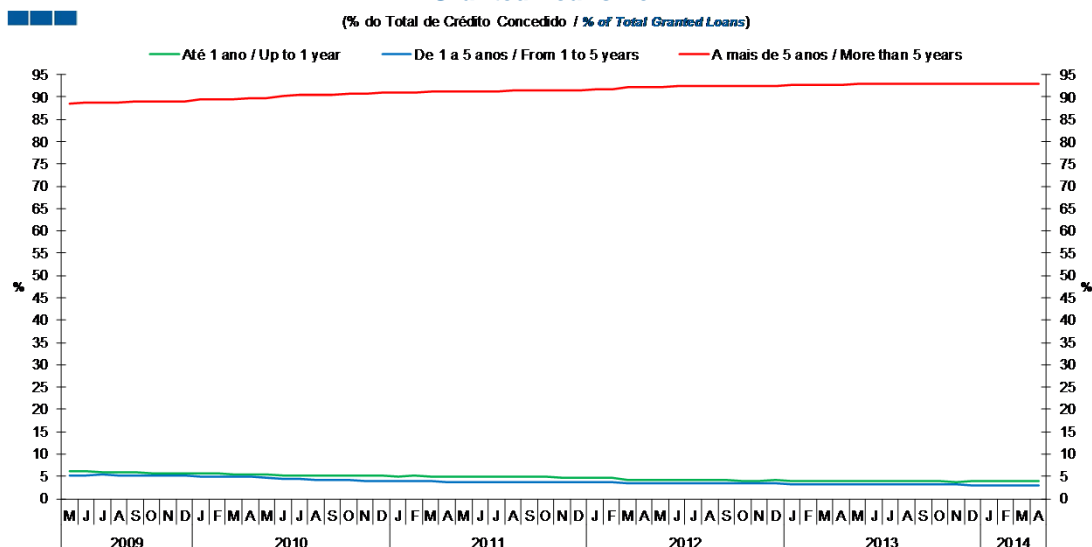


	2012												2013												2014			
	M	J	J	A	S	O	N	D	J	F	M	A	M	J	J	A	S	O	N	D	J	F	M	A				
Habitação / Housing	43.6	43.9	44.0	43.9	44.1	44.3	44.5	44.2	43.9	43.9	43.8	44.5	44.8	44.9	45.0	45.3	45.9	45.9	46.5	47.0	47.3	47.1	46.9	46.9				
Consumo / Consumption	31.9	31.4	31.5	31.5	31.7	30.6	30.7	31.0	30.7	30.7	30.7	29.8	29.3	29.3	29.0	28.9	28.6	28.3	27.8	27.6	27.4	27.2	27.1	27.0				
Outros Fins / Other Purposes	24.5	24.6	24.6	24.6	24.2	25.1	24.8	24.9	25.3	25.4	25.5	25.7	25.8	25.8	26.0	25.8	25.5	25.8	25.7	25.4	25.4	25.7	26.0	26.1				

Nota: Inclui crédito a emigrantes.
 Note: Includes credit to emigrants.

3. Particulares / Households

Gráfico / Graph 3.7.
 Prazo dos Empréstimos Concedidos
 Granted Loans Term



	2012												2013												2014			
	M	J	J	A	S	O	N	D	J	F	M	A	M	J	J	A	S	O	N	D	J	F	M	A				
Até 1 ano / Up to 1 year	4.2	4.2	4.2	4.1	4.1	4.1	4.0	4.1	4.0	4.0	4.0	3.9	3.9	3.9	3.9	3.9	3.8	3.8	3.9	3.9	3.9	3.9	3.9					
1 a 5 anos / 1 to 5 years	3.5	3.4	3.4	3.4	3.4	3.4	3.4	3.3	3.3	3.3	3.3	3.2	3.2	3.2	3.2	3.2	3.1	3.1	3.1	3.1	3.1	3.1	3.0					
Mais de 5 anos / More than 5 years	92.3	92.4	92.4	92.4	92.5	92.6	92.6	92.6	92.7	92.7	92.8	92.9	92.9	92.9	92.9	92.9	93.0	93.1	93.0	93.1	93.0	93.1	93.0					

Nota: Inclui crédito a emigrantes.
 Note: Includes credit to emigrants.