

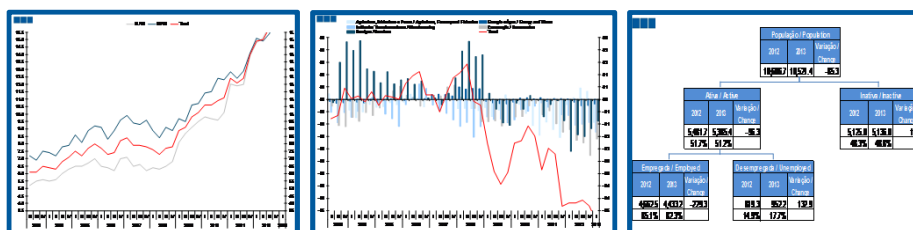
Estatísticas Temáticas de Conjuntura

Short-term Thematic Statistics

- Nº 2/2013 -

10 de Maio de 2013

May, 10, 2013



Estatísticas do Emprego

Labour Statistics

- 1º Trimestre de 2013 -

- 1st Quarter of 2013 -

Fonte: Instituto Nacional de Estatística

Source: Statistics Portugal

Nota: Quebra de série no 1º Trimestre de 2011 devido a alteração metodológica sem retropolização.

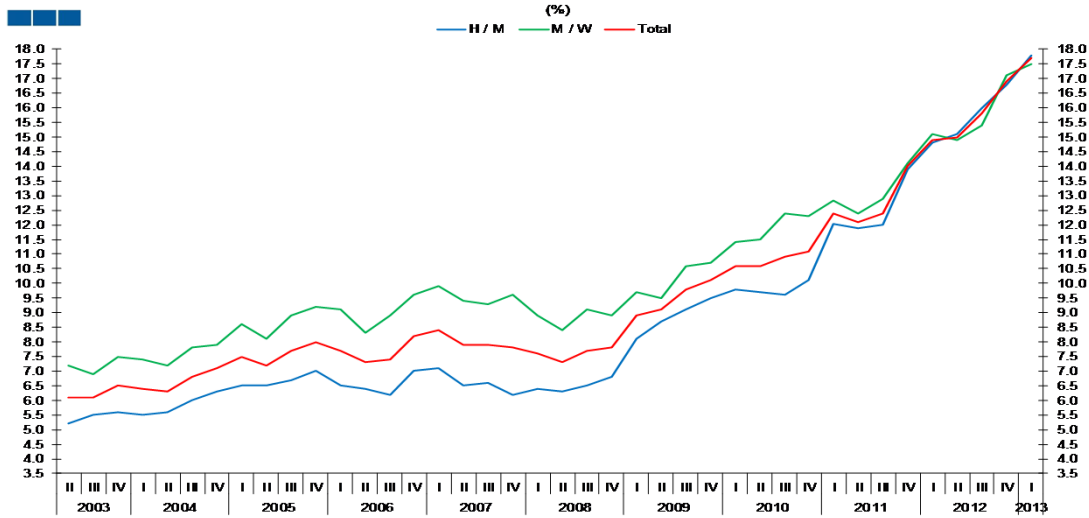
Note: Series break in the 1st quarter of 2011 due to methodological changes without backward projection.

Índice / Index

	Página / Page
1. Principais Indicadores / Main Indicators	
Taxa de Desemprego / <i>Unemployment Rate</i>	3
Taxa de Atividade / <i>Activity Rate</i>	3
Taxa de Atividade e de Desemprego / <i>Activity and Unemployment Rate</i>	4
População Ativa, Inativa, Empregada e Desempregada / <i>Active, Inactive, Employed and Unemployed Population</i>	5
População Ativa e Inativa / <i>Active and Inactive Population</i>	5
População Ativa, Empregada e Desempregada / <i>Active, Employed and Unemployed Population</i>	6
Desemprego de longa duração (12 meses ou mais) / <i>Long-term Unemployment (12 months or longer)</i>	7
2. Regiões Nuts II / Nuts II regions	
Taxa de Desemprego / <i>Unemployment Rate</i>	8
3. Ramos de Atividade / Industries	
População Empregada / <i>Employed Population</i>	9
Estrutura da População Empregada / <i>Employed Population Structure</i>	9
Variação Homóloga da População Empregada / <i>Employed Population Annual Change</i>	10
Contributo (p.p.) para a Variação Homóloga (%) do Emprego / <i>Contribution (p.p.) to Employment Annual Change (%)</i>	10
População Desempregada / <i>Unemployed Population</i>	11
Estrutura da População Desempregada / <i>Unemployed Population Structure</i>	11
Variação Homóloga da População Desempregada / <i>Unemployed Population Annual Change</i>	12
4. Faixa Etária / Age Groups	
População Empregada / <i>Employed Population</i>	13
Estrutura da População Empregada / <i>Employed Population Structure</i>	13
Variação Homóloga da População Empregada / <i>Employed Population Annual Change</i>	14
População Desempregada / <i>Unemployed Population</i>	15
Variação Homóloga da População Desempregada / <i>Unemployed Population Annual Change</i>	15
Taxa de Desemprego / <i>Unemployment Rate</i>	16
População Inativa / <i>Inactive Population</i>	17
Estrutura da População Inativa / <i>Inactive Population Structure</i>	17
5. Grau de Ensino / Highest Level of Education Attained	
População Empregada / <i>Employed Population</i>	18
Variação Homóloga da População Empregada / <i>Employed Population Annual Change</i>	18
População Desempregada / <i>Unemployed Population</i>	19
Variação Homóloga da População Desempregada / <i>Unemployed Population Annual Change</i>	19
Taxa de Desemprego / <i>Unemployment Rate</i>	20
6. Árvore do Emprego - GEE / Employment Tree - GEE	
Árvore do Emprego - GEE / <i>Employment Tree - GEE</i>	21

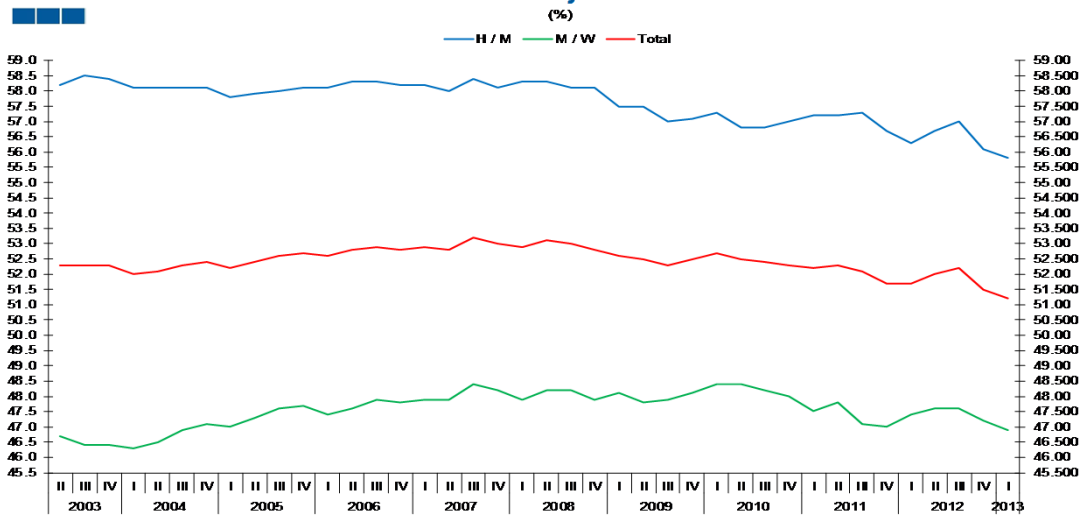
1. Principais Indicadores / Main Indicators

Gráfico / Graph 1.1.
Taxa de Desemprego
Unemployment Rate



	2007			2008				2009				2010				2011				2012				2013
	II	III	IV	I	II	III	IV	I	II	III	IV	I	II	III	IV	I	II	III	IV	I	II	III	IV	I
H / M	6.5	6.6	6.2	6.4	6.3	6.5	6.8	8.1	8.7	9.1	9.5	9.8	9.7	9.6	10.1	12.0	11.9	12.0	13.9	14.8	15.1	16.0	16.8	17.8
M / W	9.4	9.3	9.6	8.9	8.4	9.1	8.9	9.7	9.5	10.6	10.7	11.4	11.5	12.4	12.3	12.8	12.4	12.9	14.1	15.1	14.9	15.4	17.1	17.5
Total	7.9	7.9	7.8	7.6	7.3	7.7	7.8	8.9	9.1	9.8	10.1	10.6	10.6	10.9	11.1	12.4	12.1	12.4	14.0	14.9	15.0	15.8	16.9	17.7

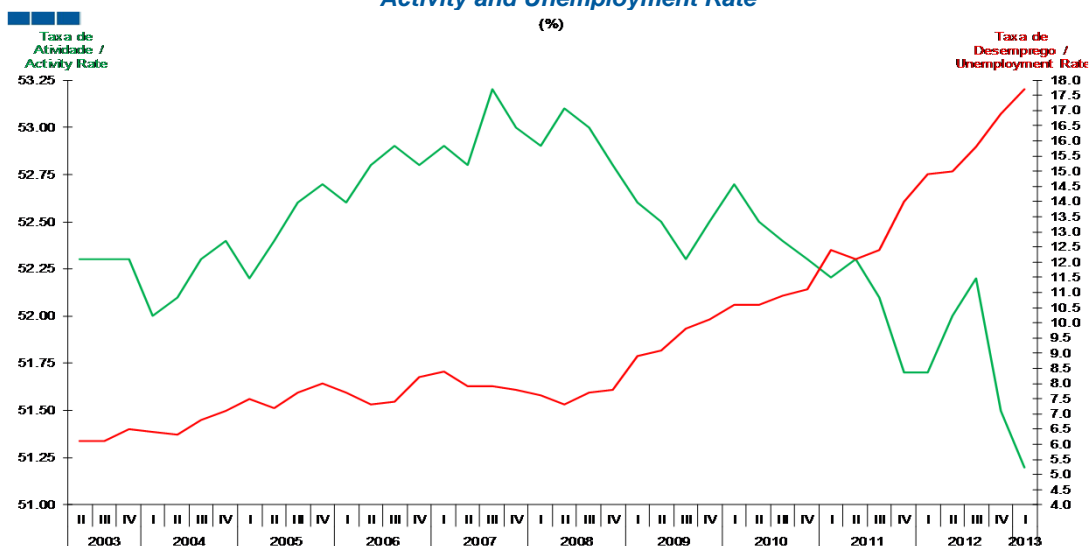
Gráfico / Graph 1.2.
Taxa de Atividade
Activity Rate



	2007			2008				2009				2010				2011				2012				2013
	II	III	IV	I	II	III	IV	I	II	III	IV	I	II	III	IV	I	II	III	IV	I	II	III	IV	I
H / M	58.0	58.4	58.1	58.3	58.3	58.1	58.1	57.5	57.5	57.0	57.1	57.3	56.8	56.8	57.0	57.2	57.2	57.3	56.7	56.3	56.7	57.0	56.1	55.8
M / W	47.9	48.4	48.2	47.9	48.2	48.2	47.9	48.1	47.8	47.9	48.1	48.4	48.4	48.2	48.0	47.5	47.8	47.1	47.0	47.4	47.6	47.6	47.2	46.9
Total	52.8	53.2	53.0	52.9	53.1	53.0	52.8	52.6	52.5	52.3	52.5	52.7	52.5	52.4	52.3	52.2	52.3	52.1	51.7	51.7	52.0	52.2	51.5	51.2

1. Principais Indicadores / Main Indicators

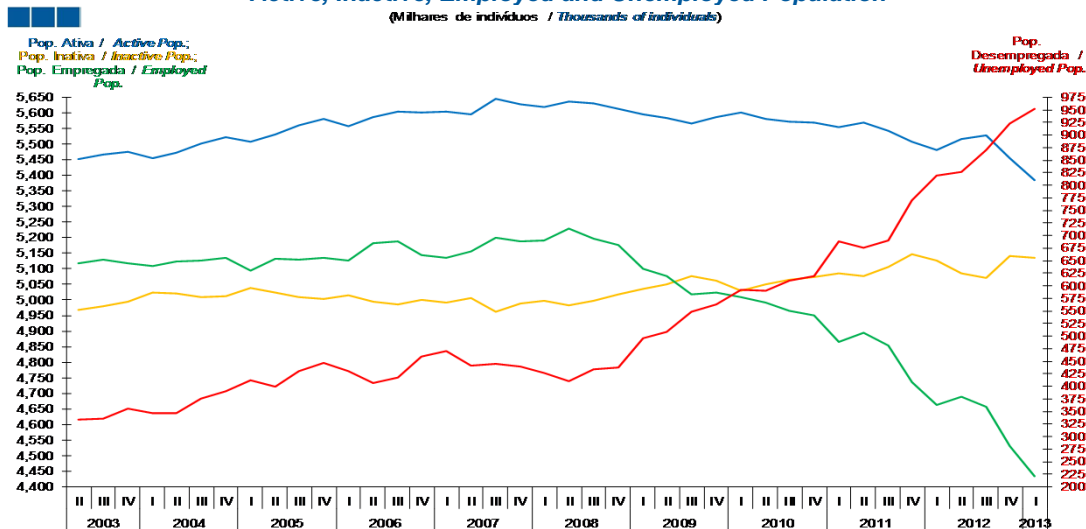
Gráfico / Graph 1.3.
Taxa de Atividade e de Desemprego
Activity and Unemployment Rate
(%)



	2007			2008				2009				2010				2011				2012				2013	
	II	III	IV	I	II	III	IV	I	II	III	IV	I	II	III	IV	I	II	III	IV	I	II	III	IV	I	
Taxa de Atividade / Activity Rate	52.8	53.2	53.0	52.9	53.1	53.0	52.8	52.6	52.5	52.3	52.5	52.7	52.5	52.4	52.3	52.2	52.3	52.1	51.7	51.7	52.0	52.2	51.5	51.2	
Taxa de Desemprego / Unemployment Rate	7.9	7.9	7.8	7.6	7.3	7.7	7.8	8.9	9.1	9.8	10.1	10.6	10.6	10.9	11.1	12.4	12.1	12.4	14.0	14.9	15.0	15.8	16.9	17.7	

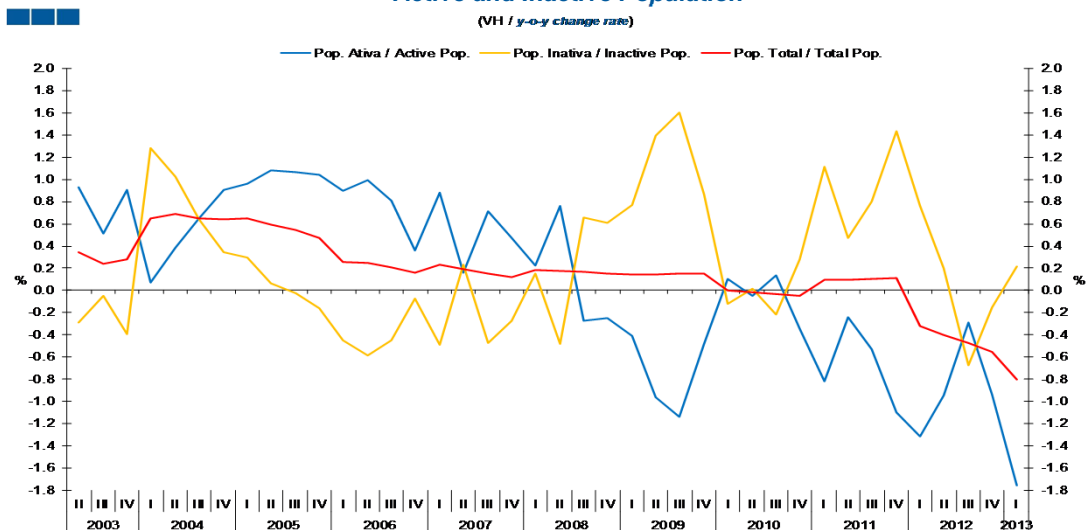
1. Principais Indicadores / Main Indicators

Gráfico / Graph 1.4.
População Ativa, Inativa, Empregada e Desempregada
Active, Inactive, Employed and Unemployed Population



	2007			2008			2009			2010			2011			2012			2013					
	II	III	IV	I	II	III	IV	I	II	III	IV	I	II	III	IV	I	II	III	IV	I				
População Ativa / Active Population	5,595	5,645	5,628	5,618	5,638	5,630	5,614	5,595	5,584	5,565	5,587	5,601	5,581	5,573	5,568	5,555	5,568	5,543	5,507	5,482	5,515	5,527	5,455	5,385
População Inativa / Inactive Population	5,005	4,963	4,987	4,997	4,981	4,996	5,017	5,036	5,051	5,076	5,061	5,030	5,051	5,065	5,075	5,086	5,075	5,105	5,147	5,125	5,086	5,071	5,140	5,136
População Empregada / Employed Population	5,155	5,200	5,188	5,191	5,228	5,196	5,176	5,099	5,076	5,018	5,024	5,009	4,992	4,964	4,949	4,866	4,893	4,854	4,735	4,663	4,688	4,656	4,532	4,433
População Desempregada / Unemployed Population	441	444	440	427	410	434	438	496	508	548	563	592	590	609	619	689	675	690	771	819	827	871	923	952

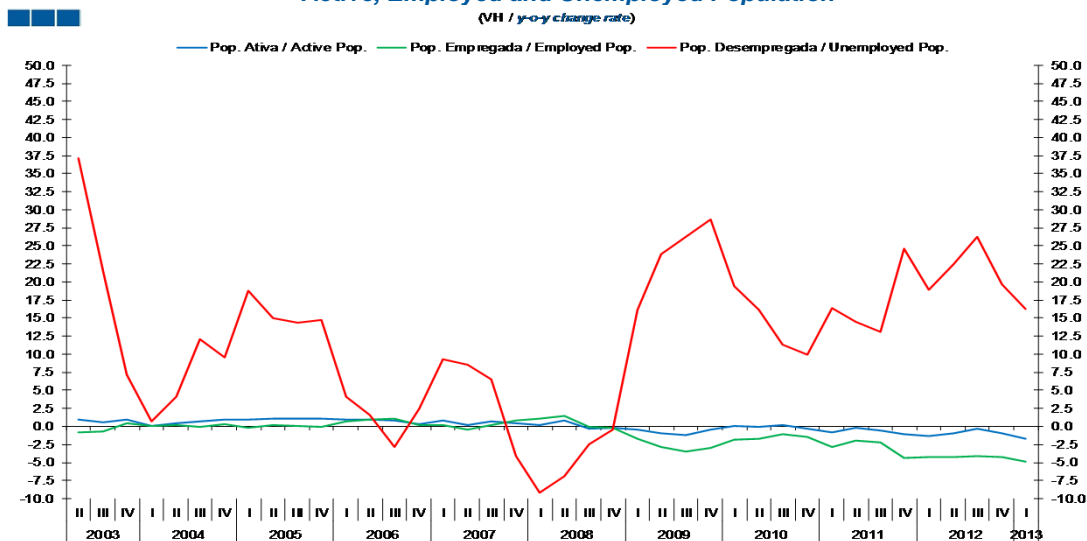
Gráfico / Graph 1.5.
População Ativa e Inativa
Active and Inactive Population



	2007			2008			2009			2010			2011			2012			2013					
	II	III	IV	I	II	III	IV	I	II	III	IV	I	II	III	IV	I	II	III	IV	I				
População Ativa / Active Population	0.2	0.7	0.5	0.2	0.8	-0.3	-0.2	-0.4	-1.0	-1.1	-0.5	0.1	0.0	0.1	-0.3	-0.8	-0.2	-0.5	-1.1	-1.3	-0.9	-0.3	-0.9	-1.8
População Inativa / Inactive Population	0.2	-0.5	-0.3	0.1	-0.5	0.7	0.6	0.8	1.4	1.6	0.9	-0.1	0.0	-0.2	0.3	1.1	0.5	0.8	1.4	0.8	0.2	-0.7	-0.2	0.2
População Total / Total Population	0.2	0.2	0.1	0.2	0.2	0.2	0.2	0.1	0.1	0.1	0.2	0.0	0.0	0.0	0.0	0.1	0.1	0.1	0.1	-0.3	-0.4	-0.5	-0.6	-0.8

1. Principais Indicadores / Main Indicators

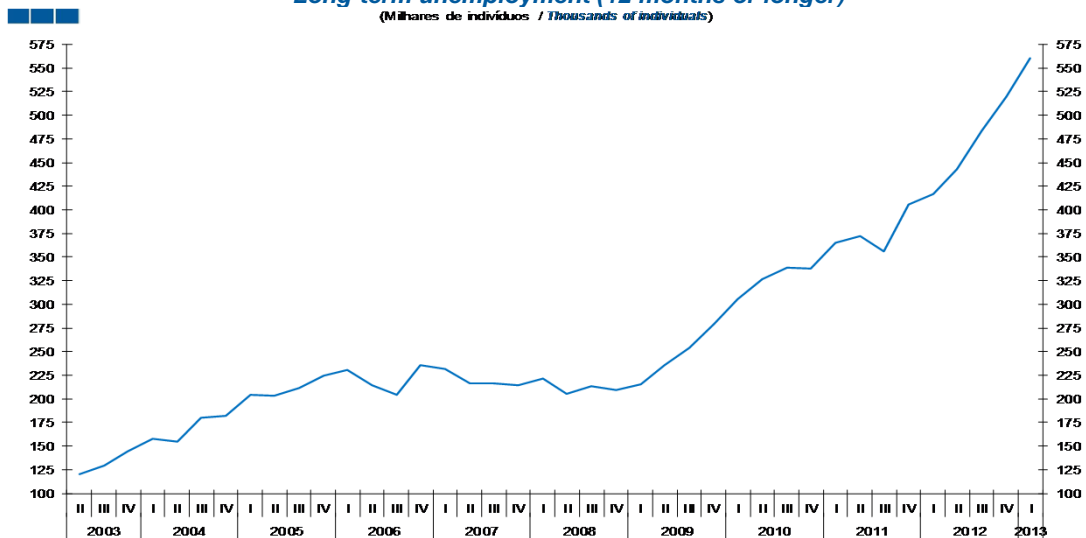
Gráfico / Graph 1.6.
População Ativa, Empregada e Desempregada
Active, Employed and Unemployed Population
(VII / y-o-y change rate)



	2007			2008				2009				2010				2011				2012				2013
	II	III	IV	I	II	III	IV	I	II	III	IV	I	II	III	IV	I	II	III	IV	I	II	III	IV	I
População Ativa / Active Population	0.2	0.7	0.5	0.2	0.8	-0.3	-0.2	-0.4	-1.0	-1.1	-0.5	0.1	0.0	0.1	-0.3	-0.8	-0.2	-0.5	-1.1	-1.3	-0.9	-0.3	-0.9	-1.8
População Empregada / Employed Population	-0.5	0.3	0.9	1.1	1.4	-0.1	-0.2	-1.8	-2.9	-3.4	-3.0	-1.8	-1.7	-1.1	-1.5	-2.8	-2.0	-2.2	-4.3	-4.2	-4.2	-4.1	-4.3	-4.9
População Desempregada / Unemployed Population	8.6	6.5	-4.2	-9.1	-6.9	-2.4	-0.4	16.1	23.9	26.3	28.7	19.4	16.2	11.3	9.9	16.3	14.4	13.2	24.6	18.9	22.5	26.3	19.7	16.2

1. Principais Indicadores / Main Indicators

Gráfico / Graph 1.7.
Desemprego de longa-duração (12 meses ou mais)
Long-term unemployment (12 months or longer)
(Milhares de indivíduos / Thousands of individuals)

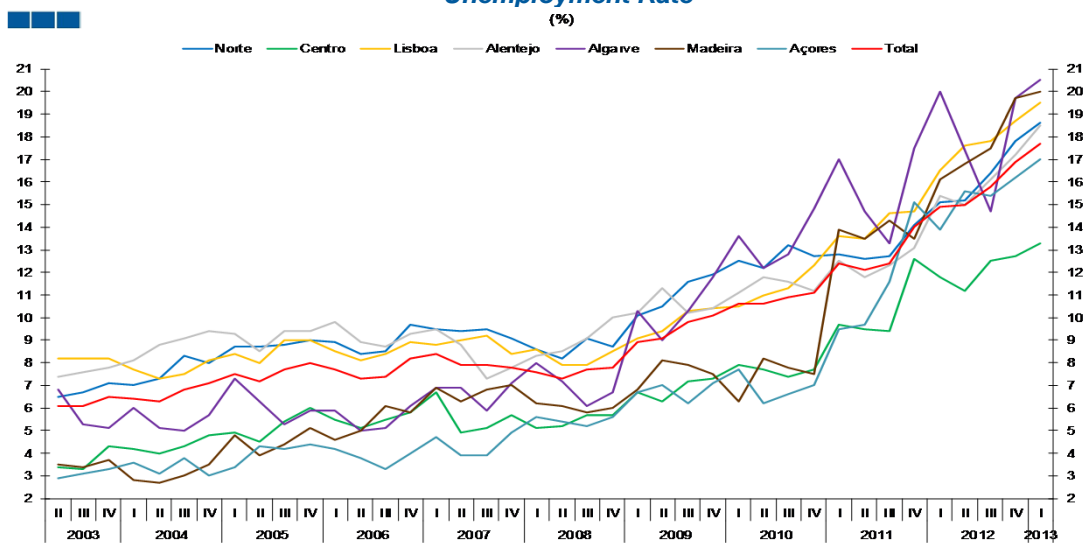


2007				2008				2009				2010				2011				2012				2013
II	III	IV	I	II	III	IV	I	II	III	IV	I	II	III	IV	I	II	III	IV	I	II	III	IV	I	
216	216	215	222	206	214	209	215	235	253	279	305	326	339	338	365	372	356	406	416	443	484	520	561	

Desempregados de LD / LT
Unemployed People

2. Regiões Nuts II / Nuts II Regions

Gráfico / Graph 2.1.
Taxa de Desemprego
Unemployment Rate

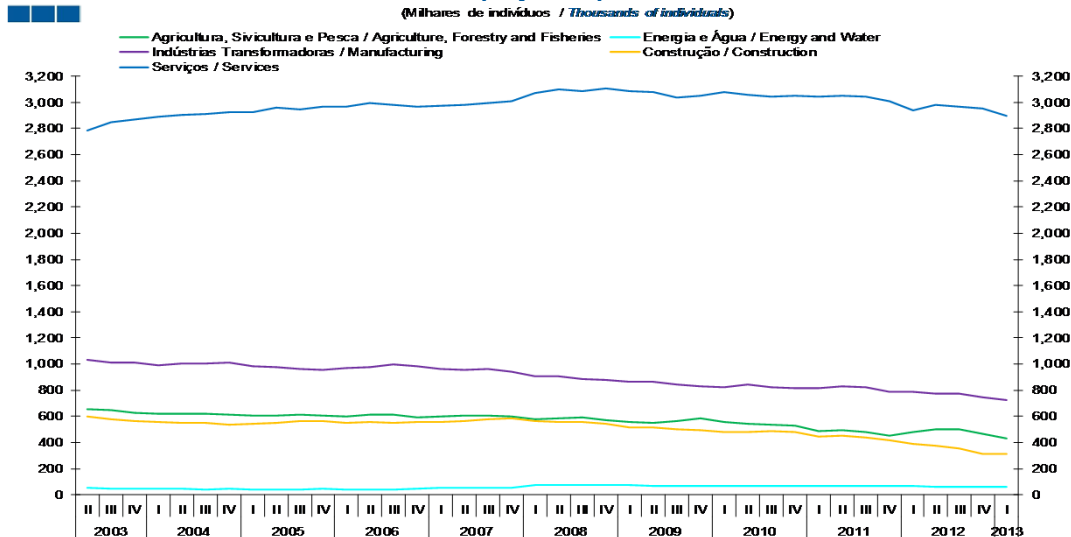


	2007			2008				2009				2010				2011				2012				2013
	II	III	IV	I	II	III	IV	I	II	III	IV	I	II	III	IV	I	II	III	IV	I	II	III	IV	I
Norte	9.4	9.5	9.1	8.6	8.2	9.1	8.7	10.1	10.5	11.6	11.9	12.5	12.2	13.2	12.7	12.8	12.6	12.7	14.1	15.1	15.2	16.4	17.8	18.6
Centro	4.9	5.1	5.7	5.1	5.2	5.7	5.7	6.7	6.3	7.2	7.3	7.9	7.7	7.4	7.7	9.7	9.5	9.4	12.6	11.8	11.2	12.5	12.7	13.3
Lisboa	9.0	9.2	8.4	8.6	7.9	7.9	8.5	9.1	9.4	10.3	10.4	10.5	11.0	11.3	12.3	13.6	13.5	14.6	14.7	16.5	17.6	17.8	18.7	19.5
Alentejo	8.8	7.3	7.8	8.3	8.5	9.1	10.0	10.2	11.3	10.2	10.4	11.1	11.8	11.6	11.2	12.5	11.8	12.3	13.1	15.4	15.0	16.1	17.2	18.5
Algarve	6.9	5.9	7.1	8.0	7.2	6.1	6.7	10.3	9.0	10.3	11.8	13.6	12.2	12.8	14.8	17.0	14.7	13.3	17.5	20.0	17.4	14.7	19.7	20.5
Madeira	6.3	6.8	7.0	6.2	6.1	5.8	6.0	6.8	8.1	7.9	7.5	6.3	8.2	7.8	7.5	13.9	13.5	14.3	13.5	16.1	16.8	17.5	19.7	20.0
Açores	3.9	3.9	4.9	5.6	5.4	5.2	5.6	6.7	7.0	6.2	7.1	7.7	6.2	6.6	7.0	9.5	9.7	11.6	15.1	13.9	15.6	15.4	16.2	17.0
Total	7.9	7.9	7.8	7.6	7.3	7.7	7.8	8.9	9.1	9.8	10.1	10.6	10.6	10.9	11.1	12.4	12.1	12.4	14.0	14.9	15.0	15.8	16.9	17.7

3. Ramos de Atividade / Industries

Gráfico / Graph 3.1.
População Empregada
Employed Population

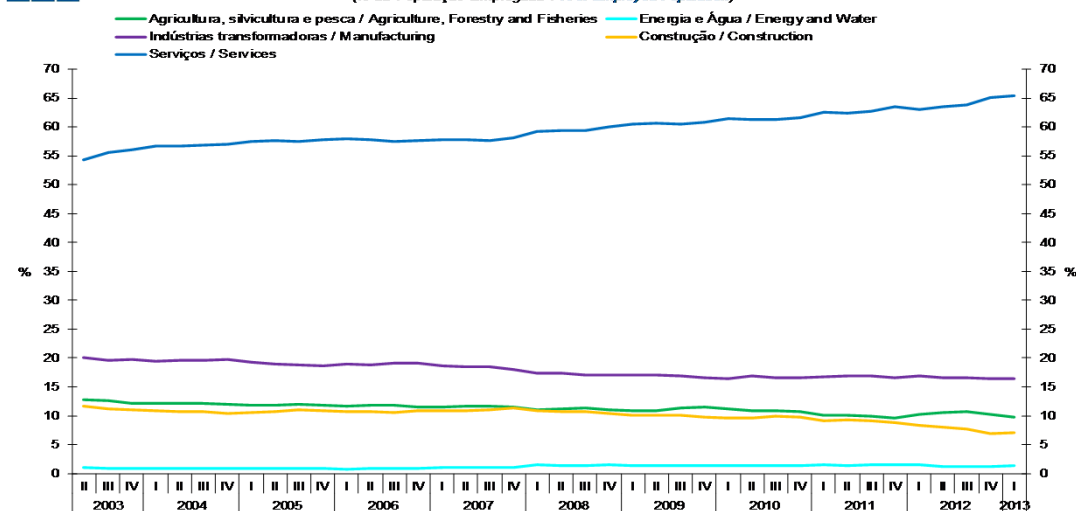
(Milhares de indivíduos / Thousands of individuals)



	2007			2008			2009			2010			2011			2012			2013					
	II	III	IV	I	II	III	IV	I	II	III	IV	I	II	III	IV	I	II	III	IV	I				
Agricultura, Silvicultura e Pesca / Agriculture, Forestry and Fisheries	606	609	596	576	587	589	572	559	551	567	582	560	541	539	529	487	496	479	453	477	499	501	468	434
Energia e Água / Energy and Water	54	53	55	77	75	75	77	73	68	66	67	67	70	69	68	71	66	71	69	71	60	58	57	62
Indústrias Transformadoras / Manufacturing	954	965	938	904	906	886	880	867	864	844	831	825	842	821	818	819	826	821	787	787	776	772	743	725
Construção / Construction	561	578	588	561	559	559	541	515	514	503	491	479	478	490	483	447	455	441	418	388	375	356	311	313
Serviços / Services	2,981	2,996	3,013	3,073	3,101	3,086	3,106	3,085	3,080	3,037	3,052	3,078	3,060	3,045	3,051	3,042	3,050	3,043	3,009	2,940	2,979	2,970	2,953	2,899

Gráfico / Graph 3.2.
Estrutura da População Empregada - 1º Trimestre de 2013
Employed Population Structure - 1st Quarter of 2013

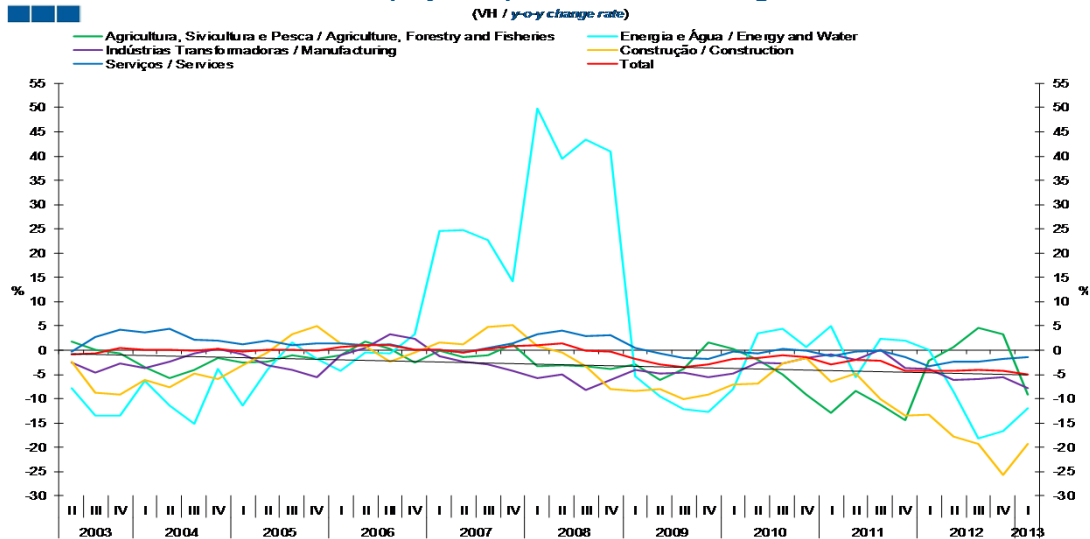
(% da População Empregada / % of Employed Population)



	2007			2008			2009			2010			2011			2012			2013					
	II	III	IV	I	II	III	IV	I	II	III	IV	I	II	III	IV	I	II	III	IV	I				
Agricultura, Silvicultura e Pesca / Agriculture, Forestry and Fisheries	11.8	11.7	11.5	11.1	11.2	11.3	11.1	11.0	10.9	11.3	11.6	11.2	10.8	10.9	10.7	10.0	10.1	9.9	9.6	10.2	10.6	10.8	10.3	9.8
Energia e Água / Energy and Water	1.0	1.0	1.1	1.5	1.4	1.4	1.5	1.4	1.3	1.3	1.3	1.4	1.4	1.4	1.5	1.3	1.5	1.5	1.5	1.5	1.3	1.2	1.3	1.4
Indústrias Transformadoras / Manufacturing	18.5	18.6	18.1	17.4	17.3	17.0	17.0	17.0	17.0	16.8	16.6	16.5	16.9	16.5	16.5	16.8	16.9	16.9	16.6	16.9	16.5	16.6	16.4	16.4
Construção / Construction	10.9	11.1	11.3	10.8	10.7	10.8	10.4	10.1	10.1	10.0	9.8	9.6	9.6	9.9	9.8	9.2	9.3	9.1	8.8	8.3	8.0	7.6	6.9	7.1
Serviços / Services	57.8	57.6	58.1	59.2	59.3	59.4	60.0	60.5	60.7	60.5	60.8	61.4	61.3	61.3	61.7	62.5	62.3	62.7	63.5	63.1	63.5	63.8	65.2	65.4

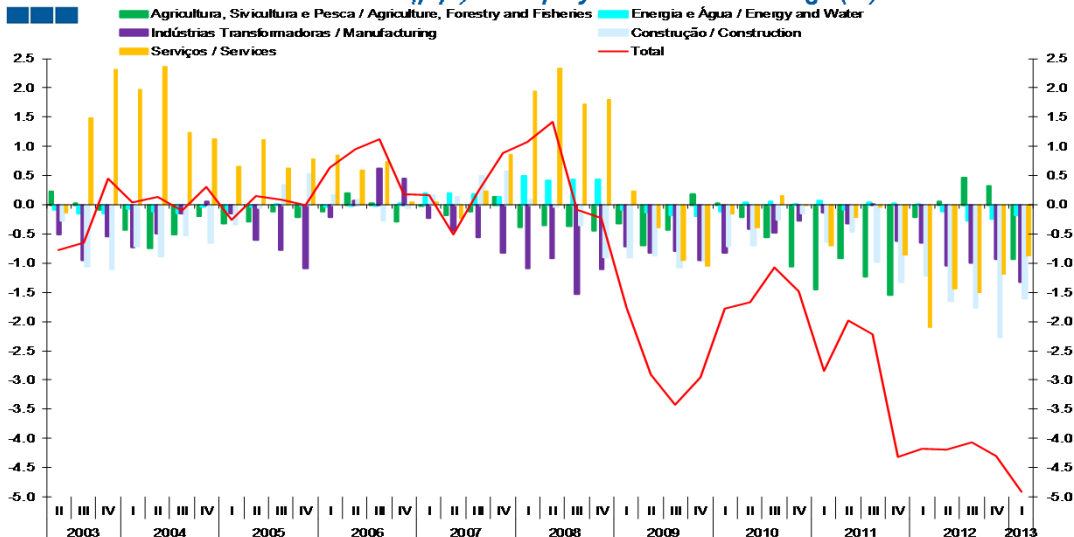
3. Ramos de Atividade / Industries

Gráfico / Graph 3.3.
Variação Homóloga da População Empregada
Employed Population Annual Change



	2007				2008				2009				2010				2011				2012				2013			
	II	III	IV	I	II	III	IV	I	II	III	IV	I	II	III	IV	I	II	III	IV	I	II	III	IV	I	II	III	IV	I
Agricultura, Silvicultura e Pesca / Agriculture, Forestry and Fisheries	-1.5	-1.0	1.1	-3.3	-3.0	-3.2	-3.9	-3.0	-6.1	-3.8	1.7	0.2	-1.9	-4.9	-9.1	-13.0	-8.4	-11.3	-14.4	-2.1	0.6	4.7	3.3	-9.1				
Energia e Água / Energy and Water	24.7	22.7	14.3	49.8	39.4	43.4	40.9	-5.4	-9.5	-12.1	-12.8	-7.9	3.6	4.4	0.7	5.1	-5.6	2.3	2.1	0.1	-8.6	-18.2	-16.7	-12.0				
Indústrias Transformadoras / Manufacturing	-2.4	-2.9	-4.3	-5.8	-5.0	-8.2	-6.1	-4.0	-4.7	-4.7	-5.6	-4.8	-2.5	-2.8	-1.6	-0.8	-1.9	0.0	-3.7	-3.9	-6.1	-5.9	-5.6	-7.8				
Construção / Construction	1.3	4.7	5.3	0.8	-0.4	-3.2	-8.0	-8.3	-8.1	-10.0	-9.2	-7.0	-6.9	-2.6	-1.6	-6.6	-4.8	-10.0	-13.5	-13.3	-17.7	-19.3	-25.6	-19.2				
Serviços / Services	-0.4	0.4	1.5	3.4	4.0	3.0	3.1	0.4	-0.7	-1.6	-1.7	-0.2	-0.7	0.3	0.0	-1.2	-0.3	-0.1	-1.4	-3.4	-2.3	-2.4	-1.9	-1.4				
Total	-0.5	0.3	0.9	1.1	1.4	-0.1	-0.2	-1.8	-2.9	-3.4	-3.0	-1.8	-1.7	-1.1	-1.5	-2.8	-2.0	-2.2	-4.3	-4.2	-4.2	-4.1	-4.3	-4.9				

Gráfico / Graph 3.4.
Contributo (p.p.) para a Variação Homóloga (%) do Emprego
Contribution (p.p.) to Employment Annual Change (%)

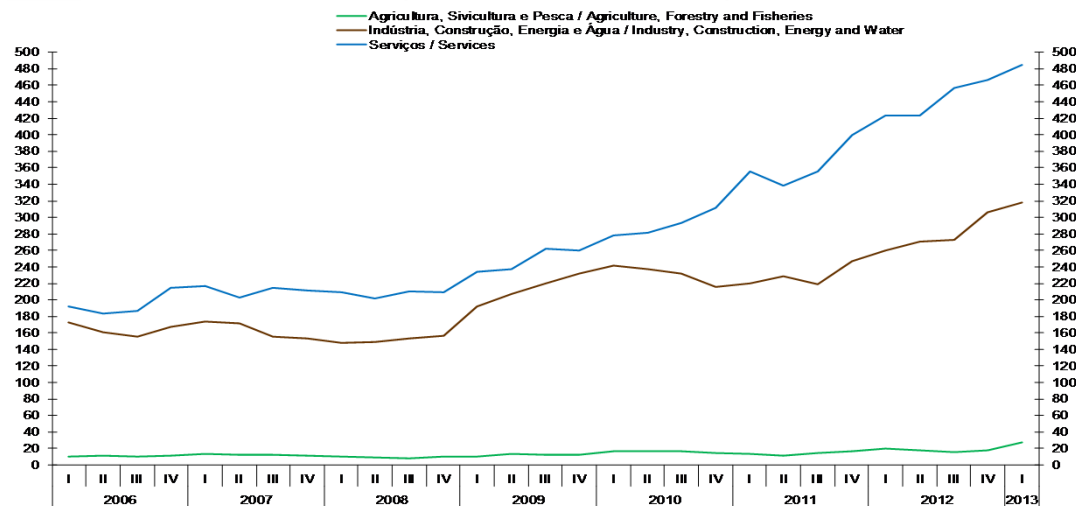


	2007				2008				2009				2010				2011				2012				2013			
	II	III	IV	I	II	III	IV	I	II	III	IV	I	II	III	IV	I	II	III	IV	I	II	III	IV	I	II	III	IV	I
Agricultura, Silvicultura e Pesca / Agriculture, Forestry and Fisheries	-0.2	-0.1	0.1	-0.4	-0.4	-0.4	-0.5	-0.3	-0.7	-0.4	0.2	0.0	-0.2	-0.6	-1.1	-1.4	-0.9	-1.2	-1.5	-0.2	0.1	0.5	0.3	-0.9				
Energia e Água / Energy and Water	0.2	0.2	0.1	0.5	0.4	0.4	0.4	-0.1	-0.1	-0.2	-0.2	-0.1	0.0	0.1	0.0	0.1	-0.1	0.0	0.0	0.0	-0.1	-0.3	-0.2	-0.2				
Indústrias Transformadoras / Manufacturing	-0.4	-0.6	-0.8	-1.1	-0.9	-1.5	-1.1	-0.7	-0.8	-0.8	-0.9	-0.8	-0.4	-0.5	-0.3	-0.1	-0.3	0.0	-0.6	-0.7	-1.0	-1.0	-0.9	-1.3				
Construção / Construction	0.1	0.5	0.6	0.1	0.0	-0.4	-0.9	-0.9	-0.9	-1.1	-1.0	-0.7	-0.7	-0.3	-0.2	-0.6	-0.5	-1.0	-1.3	-1.2	-1.7	-1.8	-2.3	-1.6				
Serviços / Services	-0.2	0.2	0.9	2.0	2.3	1.7	1.8	0.2	-0.4	-1.0	-1.0	-0.1	-0.4	0.2	0.0	-0.7	-0.2	0.0	-0.9	-2.1	-1.4	-1.5	-1.2	-0.9				
Total	-0.5	0.3	0.9	1.1	1.4	-0.1	-0.2	-1.8	-2.9	-3.4	-3.0	-1.8	-1.7	-1.1	-1.5	-2.8	-2.0	-2.2	-4.3	-4.2	-4.2	-4.1	-4.3	-4.9				

3. Ramos de Atividade / Industries

Gráfico / Graph 3.5.
População Desempregada
Unemployed Population

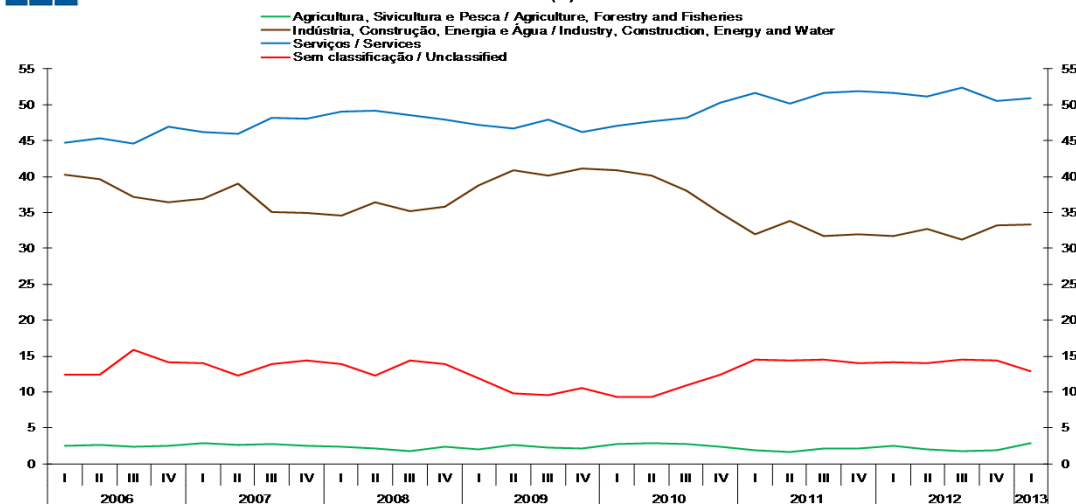
(Milhares de indivíduos / Thousands of individuals)



	2007			2008				2009				2010				2011				2012				2013
	II	III	IV	I	II	III	IV	I	II	III	IV	I	II	III	IV	I	II	III	IV	I	II	III	IV	I
Agricultura, Silvicultura e Pesca / Agriculture, Forestry and Fisheries	12	13	11	10	9	8	11	10	14	13	12	17	17	17	15	13	12	15	17	20	17	16	18	27
Indústria, Construção, Energia e Água / Industry, Construction, Energy and Water	172	156	154	148	149	153	157	192	208	220	232	242	237	232	216	220	228	219	247	260	271	272	306	317
Serviços / Services	203	214	211	209	202	211	210	234	237	262	260	279	281	294	311	355	338	356	400	423	423	457	466	485

Gráfico / Graph 3.6.
Estrutura da População Desempregada - 1º Trimestre de 2013
Unemployed Population Structure - 1st Quarter of 2013

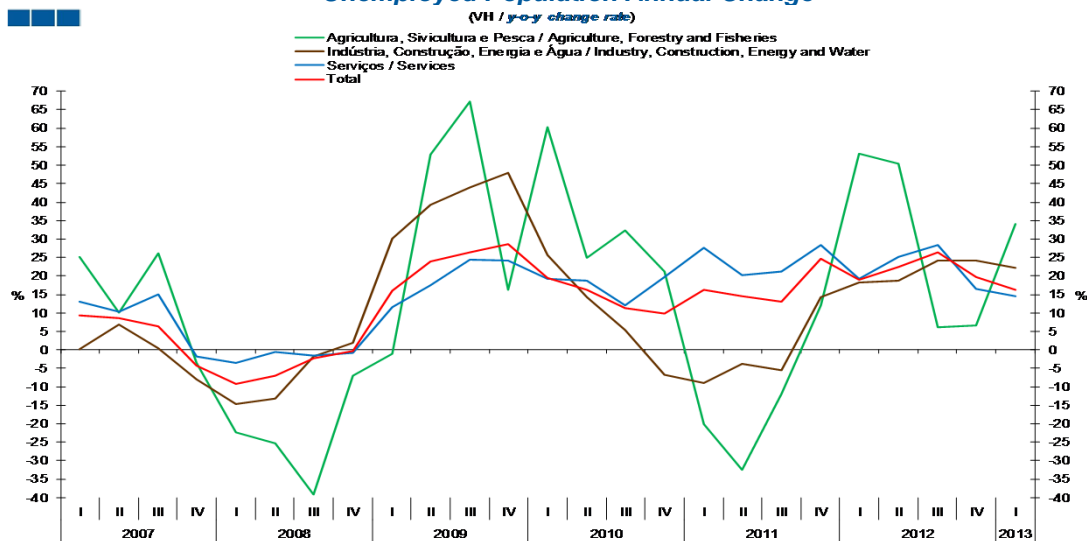
(%)



	2007			2008				2009				2010				2011				2012				2013
	II	III	IV	I	II	III	IV	I	II	III	IV	I	II	III	IV	I	II	III	IV	I	II	III	IV	I
Agricultura, Silvicultura e Pesca / Agriculture, Forestry and Fisheries	2.7	2.8	2.6	2.4	2.2	1.8	2.4	2.1	2.7	2.3	2.2	2.8	2.9	2.8	2.4	1.9	1.7	2.1	2.2	2.5	2.1	1.8	1.9	2.8
Indústria, Construção, Energia e Água / Industry, Construction, Energy and Water	39.0	35.0	34.9	34.6	36.4	35.2	35.8	38.8	40.9	40.2	41.1	40.8	40.2	38.1	34.9	31.9	33.8	31.8	32.0	31.7	32.7	31.3	33.2	33.3
Serviços / Services	46.0	48.2	48.1	49.0	49.2	48.6	47.9	47.1	46.6	47.9	46.2	47.0	47.7	48.2	50.3	51.6	50.1	51.6	51.9	51.7	51.2	52.4	50.5	50.9
Sem Classificação / Unclassified	12.3	14.0	14.4	13.9	12.3	14.4	13.9	12.0	9.8	9.6	10.6	9.4	9.3	11.0	12.5	14.6	14.4	14.5	14.0	14.1	14.0	14.5	14.4	12.9

3. Ramos de Atividade / Industries

Gráfico / Graph 3.7.
Variação Homóloga da População Desempregada
Unemployed Population Annual Change

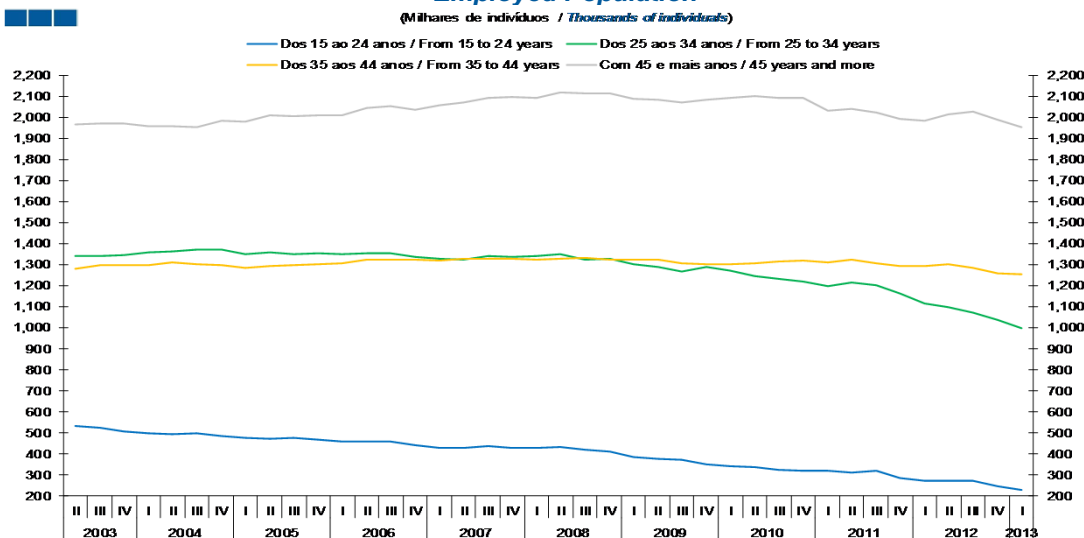


	2007		2008				2009				2010				2011				2012				2013
	IV	I	II	III	IV	I	II	III	IV	I	II	III	IV	I	II	III	IV	I	II	III	IV	I	
Agricultura, Silvicultura e Pesca / Agriculture, Forestry and Fisheries	-3.4	-22.4	-25.2	-39.2	-7.1	-1.0	52.8	67.1	16.2	60.2	25.0	32.3	21.3	-20.0	-32.4	-11.9	12.2	53.0	50.4	6.1	6.6	34.2	
Indústria, Construção, Energia e Água / Industry, Construction, Energy and Water	-8.0	-14.7	-13.1	-1.9	2.0	30.2	39.2	44.0	47.8	25.6	14.2	5.4	-6.7	-9.0	-3.7	-5.6	14.3	18.2	18.6	24.3	24.1	22.1	
Serviços / Services	-1.7	-3.6	-0.5	-1.6	-0.9	11.7	17.5	24.5	24.2	19.2	18.7	11.9	19.6	27.6	20.3	21.1	28.5	19.2	25.1	28.4	16.5	14.5	
Total	-4.2	-9.1	-6.9	-2.4	-0.4	16.1	23.9	26.3	28.7	19.4	16.2	11.3	9.9	16.3	14.4	13.2	24.6	18.9	22.5	26.3	19.7	16.2	

4. Faixa Etária / Age Groups

Gráfico / Graph 4.1.
População Empregada
Employed Population

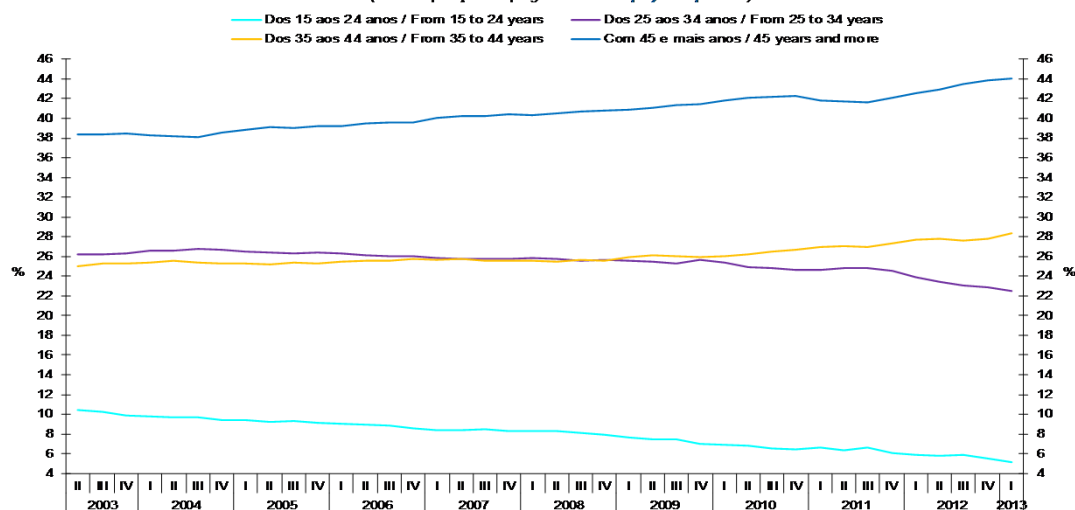
(Milhares de indivíduos / Thousands of individuals)



	2007			2008			2009			2010			2011			2012			2013					
	II	III	IV	I	II	III	IV	I	II	III	IV	I	II	III	IV	I	II	III	IV	I				
15 - 24 Anos / 15 - 24 Years old	431	439	429	431	432	423	411	388	378	374	351	343	340	323	320	322	312	322	285	272	272	274	247	229
25 - 34 Anos / 25 - 34 Years old	1,325	1,341	1,335	1,342	1,348	1,326	1,330	1,302	1,290	1,267	1,287	1,269	1,246	1,231	1,219	1,200	1,216	1,204	1,161	1,113	1,099	1,073	1,037	997
35 - 44 Anos / 35 - 44 Years old	1,327	1,328	1,327	1,325	1,329	1,334	1,324	1,323	1,324	1,304	1,303	1,303	1,306	1,316	1,320	1,312	1,326	1,308	1,295	1,293	1,304	1,284	1,261	1,255
+ 45 Anos / + 45 Years old	2,072	2,093	2,097	2,094	2,119	2,114	2,112	2,086	2,084	2,072	2,083	2,093	2,100	2,093	2,091	2,032	2,040	2,020	1,994	1,984	2,014	2,025	1,987	1,954

Gráfico / Graph 4.2.
Estrutura da População Empregada - 1º Trimestre de 2013
Employed Population Structure - 1st Quarter of 2013

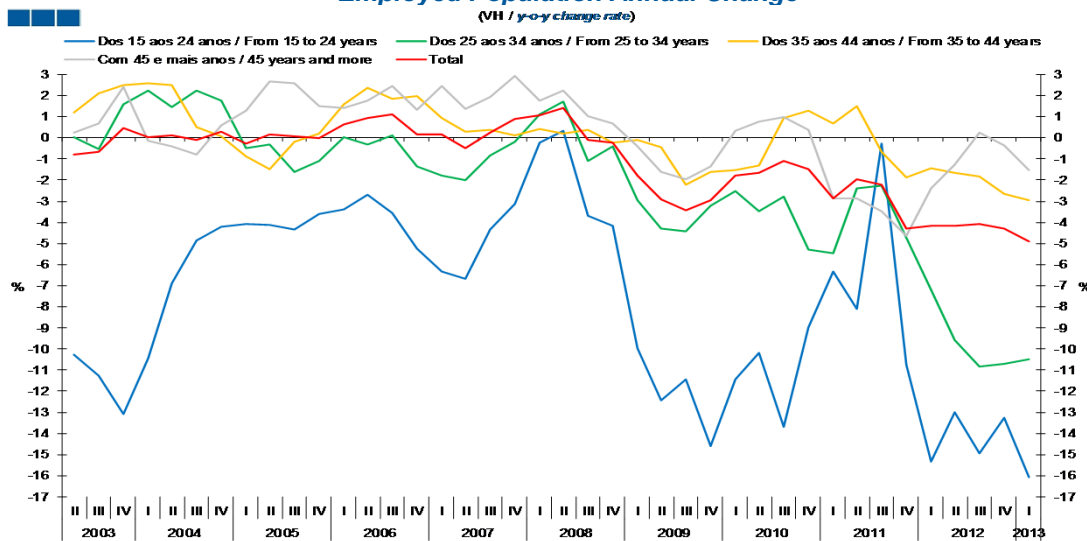
(% da População Empregada / % of Employed Population)



	2007			2008			2009			2010			2011			2012			2013					
	II	III	IV	I	II	III	IV	I	II	III	IV	I	II	III	IV	I	II	III	IV	I				
15 - 24 Anos / 15 - 24 Years old	8.4	8.4	8.3	8.3	8.3	8.1	7.9	7.6	7.5	7.5	7.0	6.9	6.8	6.5	6.5	6.6	6.4	6.6	6.0	5.8	5.8	5.9	5.5	5.2
25 - 34 Anos / 25 - 34 Years old	25.7	25.8	25.7	25.9	25.8	25.5	25.7	25.5	25.4	25.2	25.6	25.3	25.0	24.8	24.6	24.7	24.8	24.8	24.5	23.9	23.5	23.0	22.9	22.5
35 - 44 Anos / 35 - 44 Years old	25.7	25.5	25.6	25.5	25.4	25.7	25.6	25.9	26.1	26.0	25.9	26.0	26.2	26.5	26.7	27.0	27.1	26.9	27.3	27.7	27.8	27.6	27.8	28.3
+ 45 Anos / + 45 Years old	40.2	40.2	40.4	40.3	40.5	40.7	40.8	40.9	41.1	41.3	41.5	41.8	42.1	42.2	42.3	41.8	41.7	41.6	42.1	42.6	43.0	43.5	43.9	44.1

4. Faixa Etária / Age Groups

Gráfico / Graph 4.3.
Variação Homóloga da População Empregada
Employed Population Annual Change
(VH / y-o-y change rate)

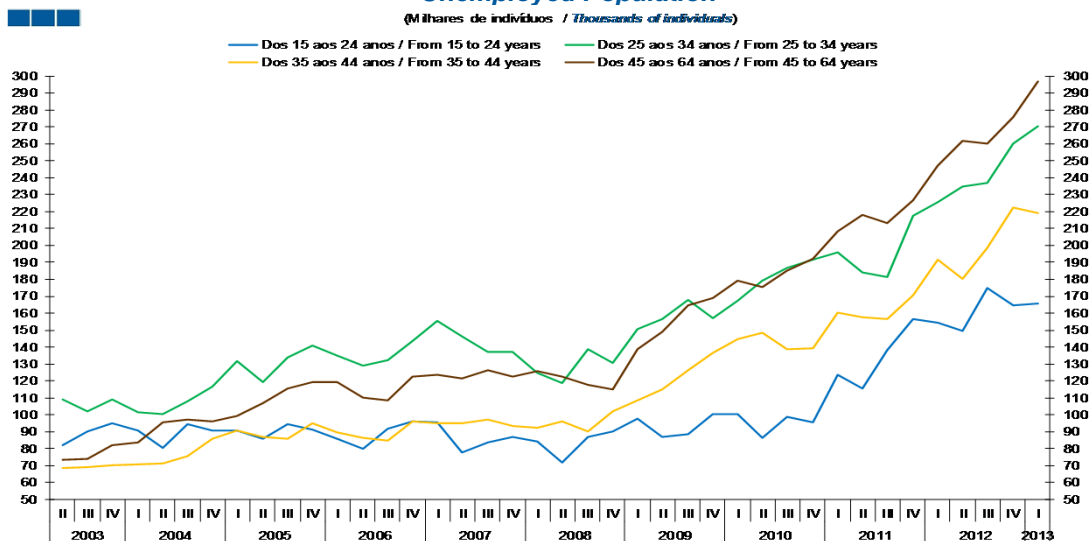


	2007			2008				2009				2010				2011				2012				2013
	II	III	IV	I	II	III	IV	I	II	III	IV	I	II	III	IV	I	II	III	IV	I	II	III	IV	I
15 - 24 Anos / 15 - 24 Years old	-6.7	-4.4	-3.1	-0.2	0.3	-3.7	-4.2	-10.0	-12.5	-11.4	-14.6	-11.4	-10.2	-13.7	-9.0	-6.3	-8.1	-0.3	-10.8	-15.3	-13.0	-15.0	-13.3	-16.1
25 - 34 Anos / 25 - 34 Years old	-2.0	-0.9	-0.2	1.1	1.7	-1.1	-0.4	-3.0	-4.3	-4.4	-3.2	-2.5	-3.5	-2.8	-5.3	-5.5	-2.4	-2.3	-4.7	-7.2	-9.6	-10.8	-10.7	-10.5
35 - 44 Anos / 35 - 44 Years old	0.3	0.4	0.1	0.4	0.2	0.4	-0.2	-0.1	-0.4	-2.2	-1.6	-1.5	-1.3	0.9	1.3	0.7	1.5	-0.7	-1.9	-1.5	-1.7	-1.8	-2.7	-3.0
+ 45 Anos / + 45 Years old	1.4	1.9	2.9	1.8	2.3	1.0	0.7	-0.4	-1.6	-2.0	-1.4	0.3	0.8	1.0	0.4	-2.9	-2.9	-3.5	-4.6	-2.4	-1.3	0.3	-0.4	-1.5
Total	-0.5	0.3	0.9	1.1	1.4	-0.1	-0.2	-1.8	-2.9	-3.4	-3.0	-1.8	-1.7	-1.1	-1.5	-2.8	-2.0	-2.2	-4.3	-4.2	-4.2	-4.1	-4.3	-4.9

4. Faixa Etária / Age Groups

Gráfico / Graph 4.4.
População Desempregada
Unemployed Population

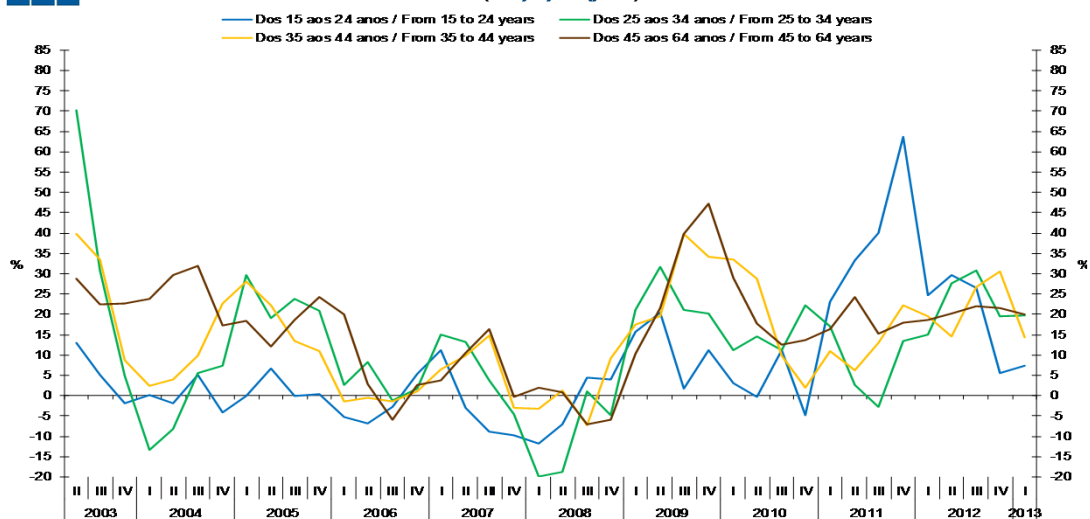
(Milhares de indivíduos / Thousands of individuals)



	2007			2008			2009			2010			2011			2012			2013					
	II	III	IV	I	II	III	IV	I	II	III	IV	I	II	III	IV	I	II	III	IV	I				
15 - 24 Anos / 15 - 24 Years old	78	84	87	84	72	87	90	98	87	89	100	101	87	99	96	124	116	138	156	154	150	175	165	166
25 - 34 Anos / 25 - 34 Years old	146	137	137	125	119	139	131	151	157	168	157	168	179	187	192	196	184	181	217	226	235	237	260	271
35 - 44 Anos / 35 - 44 Years old	95	97	93	92	96	90	102	108	115	126	137	145	148	139	139	160	158	157	170	192	181	199	222	219
45 - 65 Anos / 45 - 65 Years old	122	127	122	126	123	118	115	139	149	165	169	179	176	185	192	208	218	213	227	247	262	260	276	297

Gráfico / Graph 4.5.
Variação Homóloga da População Desempregada
Unemployed Population Annual Change

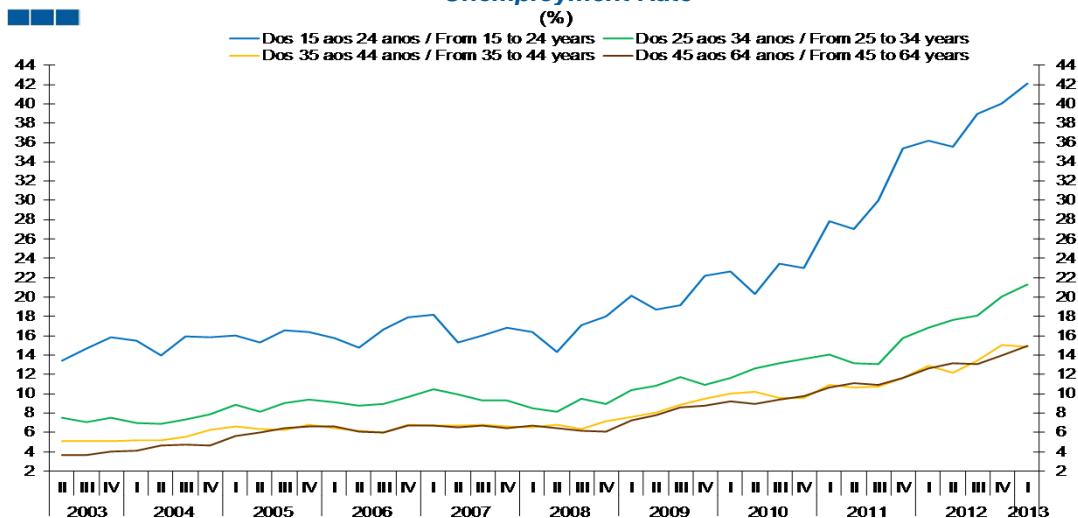
(VH / y-o-y change rate)



	2007			2008			2009			2010			2011			2012			2013					
	II	III	IV	I	II	III	IV	I	II	III	IV	I	II	III	IV	I	II	III	IV	I				
15 - 24 Anos / 15 - 24 Years old	-3.0	-8.9	-9.9	-11.7	-7.1	4.4	4.0	15.8	20.5	1.8	11.2	3.1	-0.3	11.3	-4.8	23.0	33.4	40.0	63.7	24.6	29.6	26.6	5.5	7.4
25 - 34 Anos / 25 - 34 Years old	13.3	3.7	-4.5	-19.9	-18.8	1.1	-4.8	21.1	31.6	21.2	20.2	11.1	14.6	11.2	22.2	17.0	2.7	-2.8	13.3	15.1	27.6	30.8	19.6	19.8
35 - 44 Anos / 35 - 44 Years old	9.9	14.9	-2.9	-3.3	1.3	-7.2	9.1	17.6	19.5	39.8	34.2	33.5	28.8	9.8	1.9	10.9	6.2	12.9	22.2	19.6	14.6	26.7	30.5	14.2
45 - 65 Anos / 45 - 65 Years old	10.5	16.3	-0.2	1.9	0.9	-7.0	-6.0	10.3	21.6	39.8	47.1	28.9	17.7	12.5	13.7	16.4	24.2	15.2	17.9	18.7	20.1	22.0	21.6	19.9

4. Faixa Etária / Age Groups

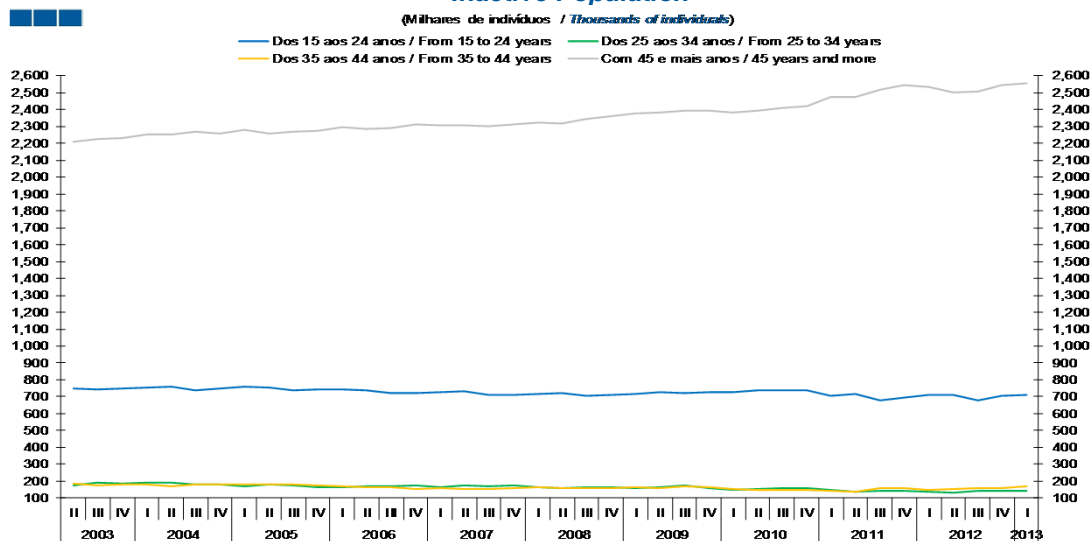
Gráfico / Graph 4.6.
Taxa de desemprego
Unemployment Rate
(%)



	2007			2008				2009				2010				2011				2012				2013
	II	III	IV	I	II	III	IV	I	II	III	IV	I	II	III	IV	I	II	III	IV	I	II	III	IV	I
15 - 24 Anos / 15 - 24 Years old	15.3	16.0	16.8	16.4	14.3	17.1	18.0	20.1	18.7	19.2	22.2	22.7	20.3	23.4	23.0	27.8	27.0	30.0	35.4	36.2	35.5	39.0	40.0	42.1
25 - 34 Anos / 25 - 34 Years old	9.9	9.3	9.3	8.5	8.1	9.5	8.9	10.4	10.8	11.7	10.9	11.7	12.6	13.2	13.6	14.0	13.2	13.1	15.8	16.9	17.6	18.1	20.0	21.3
35 - 44 Anos / 35 - 44 Years old	6.7	6.8	6.6	6.5	6.8	6.3	7.1	7.6	8.0	8.8	9.5	10.0	10.2	9.5	9.6	10.9	10.6	10.7	11.6	12.9	12.2	13.4	15.0	14.9
45 - 65 Anos / 45 - 65 Years old	6.5	6.7	6.5	6.7	6.4	6.2	6.0	7.3	7.8	8.6	8.8	9.2	9.0	9.4	9.7	10.6	11.1	10.9	11.6	12.6	13.2	13.1	13.9	14.9

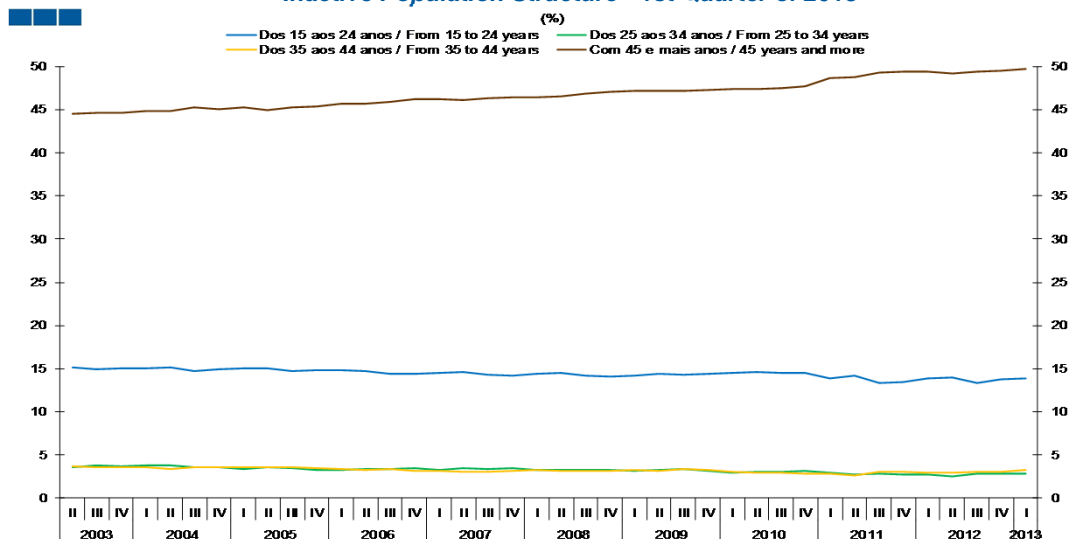
4. Faixa Etária / Age Groups

Gráfico / Graph 4.7.
População Inativa
Inactive Population



	2007			2008			2009			2010			2011			2012			2013					
	II	III	IV	I	II	III	IV	I	II	III	IV	I	II	III	IV	I	II	III	IV	I				
15 - 24 Anos / 15 - 24 Years old	734	710	708	719	720	707	709	716	729	723	728	729	740	737	737	707	718	679	692	710	710	676	708	712
25 - 34 Anos / 25 - 34 Years old	174	168	174	166	161	162	164	161	163	173	161	148	155	157	160	149	137	145	144	138	131	143	144	144
35 - 44 Anos / 35 - 44 Years old	154	152	158	163	157	160	160	166	160	171	164	153	148	149	146	144	135	156	158	149	152	157	159	168
+ 45 Anos / + 45 Years old	2,308	2,299	2,314	2,323	2,317	2,342	2,363	2,376	2,382	2,395	2,396	2,384	2,394	2,408	2,419	2,476	2,475	2,516	2,545	2,535	2,503	2,508	2,544	2,553

Gráfico / Graph 4.8.
Estrutura da População Inativa - 1º Trimestre de 2013
Inactive Population Structure - 1st Quarter of 2013

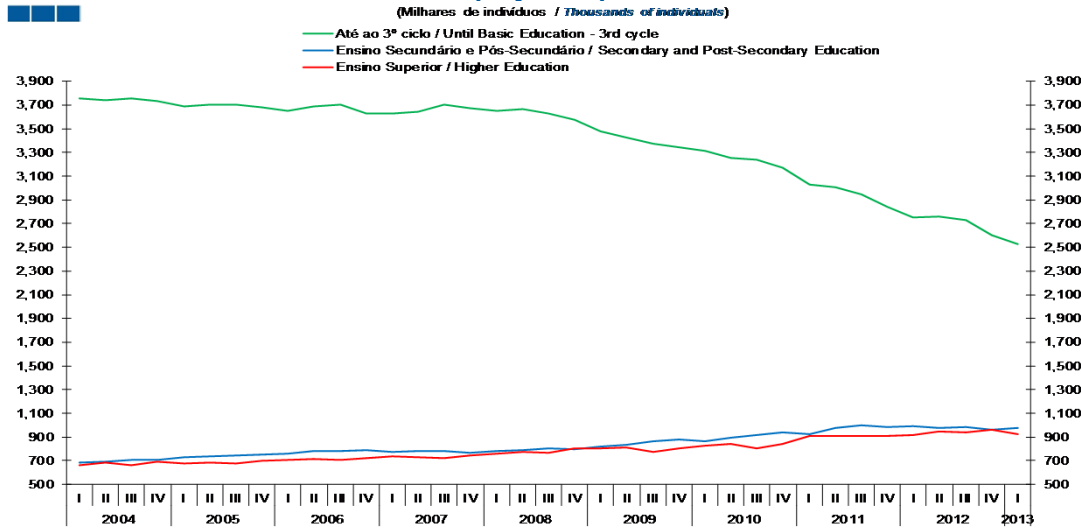


	2007			2008			2009			2010			2011			2012			2013					
	II	III	IV	I	II	III	IV	I	II	III	IV	I	II	III	IV	I	II	III	IV	I				
15 - 24 Anos / 15 - 24 Years old	14.7	14.3	14.2	14.4	14.5	14.2	14.1	14.2	14.4	14.3	14.4	14.5	14.6	14.5	14.5	13.9	14.2	13.3	13.4	13.9	14.0	13.3	13.8	13.9
25 - 34 Anos / 25 - 34 Years old	3.5	3.4	3.5	3.3	3.2	3.2	3.3	3.2	3.2	3.4	3.2	2.9	3.1	3.1	3.2	2.9	2.7	2.8	2.8	2.7	2.6	2.8	2.8	2.8
35 - 44 Anos / 35 - 44 Years old	3.1	3.1	3.2	3.3	3.2	3.2	3.2	3.3	3.2	3.4	3.2	3.0	2.9	2.9	2.9	2.8	2.7	3.1	3.1	2.9	3.0	3.1	3.1	3.3
+ 45 Anos / + 45 Years old	46.1	46.3	46.4	46.5	46.5	46.9	47.1	47.2	47.2	47.2	47.3	47.4	47.4	47.5	47.7	48.7	48.8	49.3	49.5	49.5	49.2	49.4	49.5	49.7

5. Grau de Ensino / Highest Level of Education Attained

Gráfico / Graph 5.1.
População Empregada
Employed Population

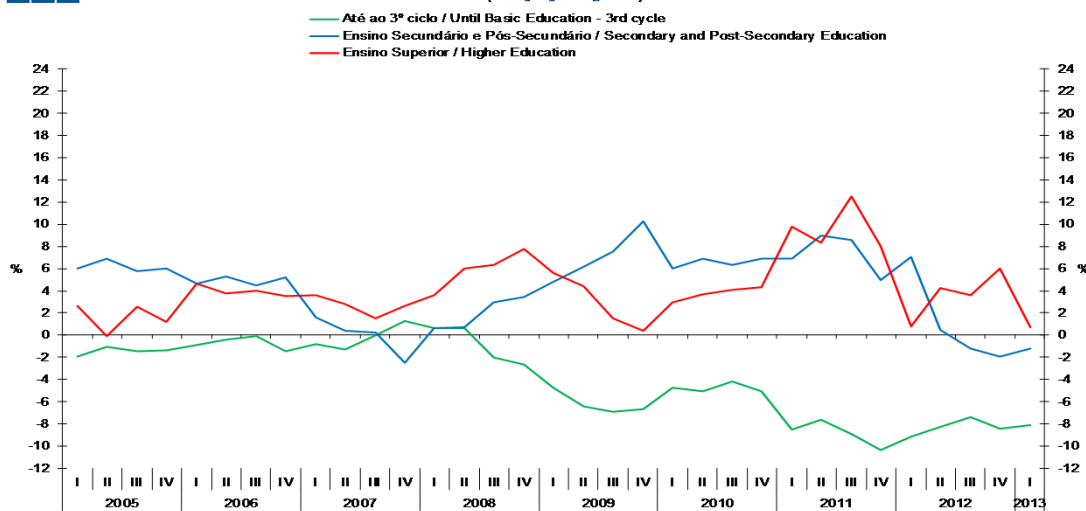
(Milhares de indivíduos / Thousands of individuals)



	2007				2008				2009				2010				2011				2012				2013
	II	III	IV	I	II	III	IV	I	II	III	IV	I	II	III	IV	I	II	III	IV	I	II	III	IV	I	
Até ao 3º ciclo / Until Basic Education (3rd cycle)	3,640	3,701	3,675	3,649	3,663	3,628	3,578	3,476	3,429	3,377	3,340	3,313	3,256	3,237	3,170	3,030	3,007	2,947	2,843	2,754	2,759	2,730	2,604	2,530	
Ensino Secundário e Pós-Secundário / Secondary and Post-Secondary Education	783	781	768	780	789	804	795	817	837	865	876	866	895	919	937	926	976	998	984	991	980	985	965	979	
Ensino Superior / Higher Education	732	719	745	763	776	764	804	806	810	776	807	830	840	808	842	911	910	909	909	918	949	942	964	924	

Gráfico / Graph 5.2.
Variação Homóloga da População Empregada
Employed Population Annual Change

(VH / y-o-y change rate)

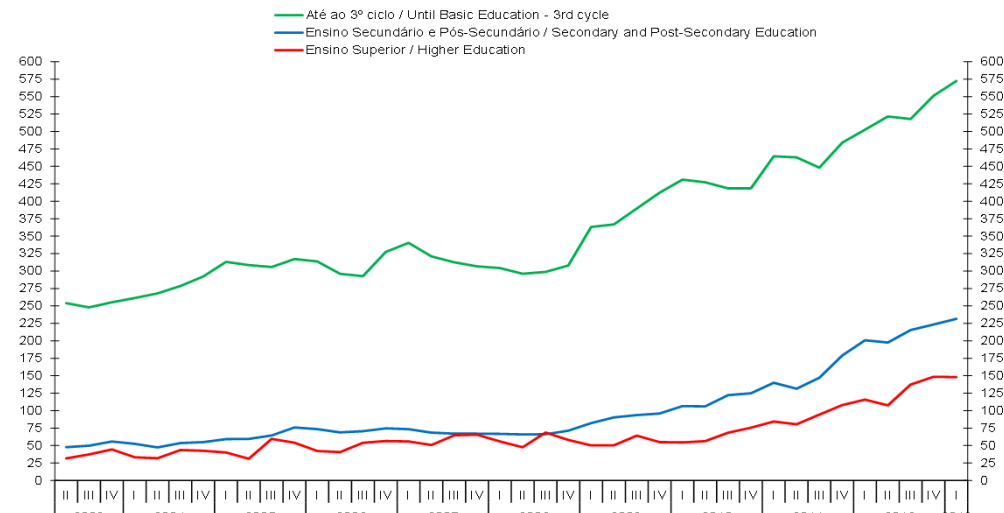


	2007				2008				2009				2010				2011				2012				2013
	II	III	IV	I	II	III	IV	I	II	III	IV	I	II	III	IV	I	II	III	IV	I	II	III	IV	I	
Até ao 3º ciclo / Until Basic Education (3rd cycle)	-1.3	0.0	1.3	0.7	0.6	-2.0	-2.6	-4.7	-6.4	-6.9	-6.6	-4.7	-5.0	-4.2	-5.1	-8.5	-7.6	-9.0	-10.3	-9.1	-8.2	-7.4	-8.4	-8.1	
Ensino Secundário e Pós-Secundário / Secondary and Post-Secondary Education	0.4	0.2	-2.5	0.6	0.8	3.0	3.4	4.8	6.2	7.5	10.3	6.0	6.9	6.3	6.9	6.9	9.0	8.6	5.0	7.1	0.5	-1.2	-1.9	-1.2	
Ensino Superior / Higher Education	2.8	1.5	2.7	3.6	6.0	6.3	7.8	5.6	4.4	1.5	0.4	3.0	3.7	4.1	4.3	9.8	8.3	12.5	8.0	0.8	4.3	3.6	6.0	0.7	

5. Grau de Ensino / Highest Level of Education Attained

Gráfico / Graph 5.3.
População Desempregada
Unemployed Population

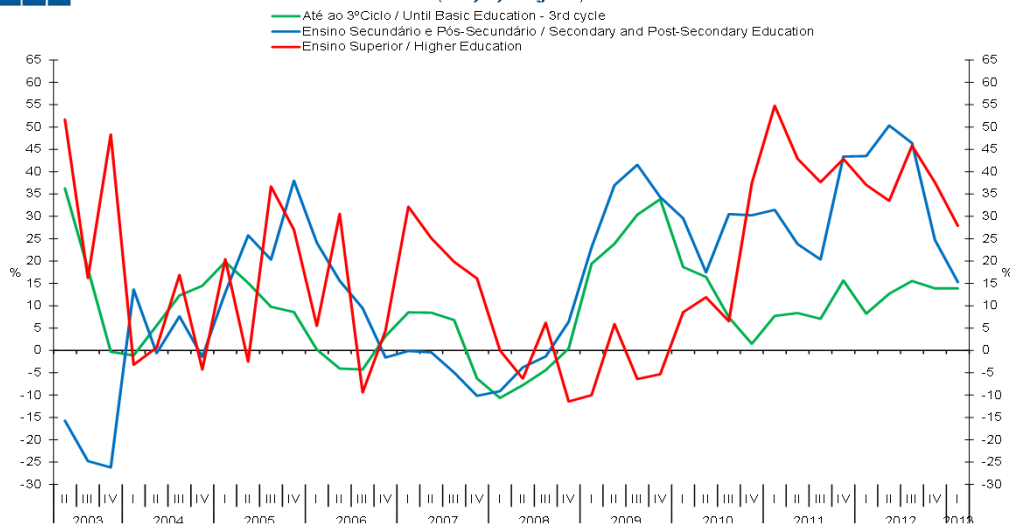
(Milhares de indivíduos / Thousands of individuals)



	2007			2008			2009			2010			2011			2012			2013					
	II	III	IV	I	II	III	IV	I	II	III	IV	I	II	III	IV	I	II	III	IV	I				
Até ao 3º ciclo / Basic Education (3rd cycle) <i>Until</i>	321	313	307	304	296	299	308	363	367	390	412	431	427	419	419	464	463	448	484	503	522	518	551	572
Ensino Secundário e Pós-Secundário / Secondary and Post-Secondary Education	69	67	67	67	66	66	71	82	90	94	96	107	106	122	125	140	132	147	179	201	198	216	223	232
Ensino Superior / Higher Education	51	65	66	56	48	69	58	50	50	64	55	55	56	69	76	85	81	94	108	116	108	138	149	148

Gráfico / Graph 5.4.
Variação Homóloga da População Desempregada
Unemployed Population Annual Change

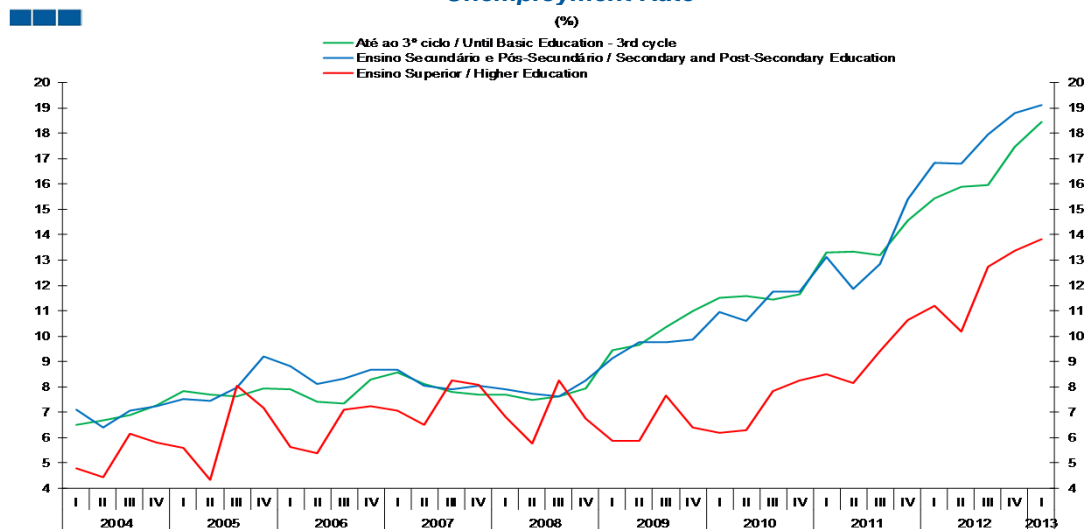
(VH / y-o-y change rate)



	2007			2008			2009			2010			2011			2012			2013					
	II	III	IV	I	II	III	IV	I	II	III	IV	I	II	III	IV	I	II	III	IV	I				
Até ao 3º ciclo / Basic Education (3rd cycle) <i>Until</i>	8.4	6.8	-6.3	-10.6	-7.8	-4.4	0.4	19.4	23.9	30.4	33.9	18.7	16.4	7.4	1.5	7.7	8.4	7.1	15.7	8.2	12.7	15.6	13.9	13.9
Ensino Secundário e Pós-Secundário / Secondary and Post-Secondary Education	-0.4	-5.0	-10.2	-9.1	-3.8	-1.3	6.4	23.1	37.0	41.5	34.3	29.6	17.5	30.5	30.2	31.5	23.8	20.4	43.4	43.5	50.3	46.4	24.7	15.3
Ensino Superior / Higher Education	25.1	19.8	16.1	0.0	-6.3	6.2	-11.4	-10.0	5.9	-6.4	-5.3	8.5	11.9	6.5	37.5	54.8	42.9	37.7	42.9	37.0	33.5	45.8	37.6	27.9

5. Grau de Ensino / Highest Level of Education Attained

Gráfico / Graph 5.5.
Taxa de desemprego
Unemployment Rate



	2007				2008				2009				2010				2011				2012				2013
	II	III	IV	I	II	III	IV	I	II	III	IV	I	II	III	IV	I	II	III	IV	I	II	III	IV	I	
Até ao 3º ciclo / Until Basic Education (3rd cycle)	8.1	7.8	7.7	7.7	7.5	7.6	7.9	9.5	9.7	10.3	11.0	11.5	11.6	11.5	11.7	13.3	13.3	13.2	14.5	15.4	15.9	15.9	17.5	18.5	
Ensino Secundário e Pós-Secundário / Secondary and Post-Secondary Education	8.1	7.9	8.0	7.9	7.7	7.6	8.2	9.1	9.7	9.8	9.9	10.9	10.6	11.7	11.8	13.1	11.9	12.9	15.4	16.9	16.8	17.9	18.8	19.1	
Ensino Superior / Higher Education	6.5	8.3	8.1	6.8	5.8	8.2	6.7	5.9	5.9	7.7	6.4	6.2	6.3	7.8	8.2	8.5	8.1	9.4	10.6	11.2	10.2	12.7	13.4	13.8	

6. Árvore do Emprego - GEE / Employment Tree - GEE

Tabela / Table 6.1.
Árvore do Emprego - GEE
Employment Tree - GEE

1º Trimestre de 2013 / 1st Quarter of 2013

(Milhares de indivíduos / Thousands of individuals)

Varição Homóloga / Annual Change

Varição em Cadeia / Quarterly Change

População / Population					
2012			2013		
		Varição / Change			Varição / Change
10,606.7	10,521.4	-85.3			
Ativa / Active			Inativa / Inactive		
2012			2013		
		Varição / Change			Varição / Change
5,481.7	5,385.4	-96.3	5,125.0	5,136.0	11.0
51.7%	51.2%		48.3%	48.8%	
Empregada / Employed			Desempregada / Unemployed		
2012			2013		
		Varição / Change			Varição / Change
4,662.5	4,433.2	-229.3	819.3	952.2	132.9
85.1%	82.3%		14.9%	17.7%	

População / Population					
IV		I		Varição / Change	
10,594.5	10,521.4	-73.1			
Ativa / Active			Inativa / Inactive		
IV			I		
		Varição / Change			Varição / Change
5,455.0	5,385.4	-69.6	5,139.5	5,136.0	-3.5
51.5%	51.2%		48.5%	48.8%	
Empregada / Employed			Desempregada / Unemployed		
IV			I		
		Varição / Change			Varição / Change
4,531.8	4,433.2	-98.6	923.2	952.2	29.0
83.1%	82.3%		16.9%	17.7%	

Cálculos / Calculations: GEE