

AÇORES

Total of active employer enterprises										
Size class (number of employees)	1987 - 2000		2001 - 2005		2005		2006		2007	
	Average number of enterprises	Growth rate	Average number of enterprises	Growth rate	Number of enterprises	Growth rate	Number of enterprises	Growth rate	Number of enterprises	Growth rate
Total	3 793	64,9	5 424	3,3	5 750	2,7	5 976	3,9	6 035	1,0
1 - 4	2 507	3,9	3 491	3,0	3 701	3,7	3 872	4,6	3 954	2,1
5 - 9	658	4,5	1 015	4,0	1 063	-0,7	1 094	2,9	1 056	-3,5
10 - 19	366	41,7	522	3,7	566	3,5	573	1,2	563	-1,7
20 - 49	176	38,8	262	3,2	273	2,6	290	6,2	313	7,9
50 - 249	77	36,9	119	5,9	132	2,3	132	0,0	131	-0,8
≥ 250	9	-214,9	15	-1,6	15	0,0	15	0,0	18	20,0

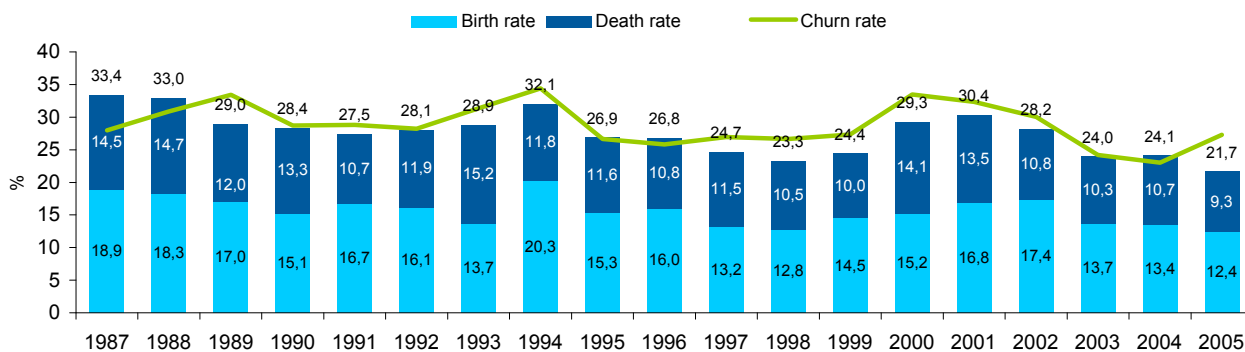
Note: Employer enterprises, according to the definition of the "Manual of Business Demography Statistics" (Eurostat/OECD, 2007), are those which employ at least one employee.

Births and Deaths

Size class (number of employees)	Births										Deaths									
	1987 - 2000		2001 - 2007		2005		2006		2007		1985 - 2000		2001 - 2005		2003		2004		2005	
	Average number	Birth rate (%)	Average number	Birth rate (%)	Nº	Birth rate (%)	Nº	Birth rate (%)	Nº	Birth rate (%)	Average number	Death rate (%)	Average number	Death rate (%)	Nº	Death rate (%)	Nº	Death rate (%)	Nº	Death rate (%)
Total	598	15,9	1 722	13,9	712	12,4	747	12,5	688	11,4	376	12,9	681	10,9	561	10,3	599	10,7	534	9,3
1 - 4	516	20,8	1 395	17,6	601	16,2	624	16,1	578	14,6	283	16,9	554	14,2	474	13,7	495	13,9	463	12,5
5 - 9	54	8,3	232	9,1	74	7,0	87	8,0	69	6,5	59	6,6	85	6,0	57	5,5	59	5,5	47	4,4
10 - 19	19	5,3	68	6,6	25	4,4	26	4,5	28	5,0	22	3,8	26	4,8	21	3,9	25	4,6	16	2,8
20 - 49	7	4,3	19	4,1	9	3,3	9	3,1	10	3,2	9	3,2	12	3,6	6	2,3	17	6,4	7	2,6
50 - 249	2	2,3	8	2,6	3	2,3	1	0,8	3	2,3	3	2,4	4	1,9	3	2,6	3	2,3	1	0,8
≥ 250		2,0		0,9		0,0		0,0		0,0		0,8		0,0		0,0		0,0		0,0

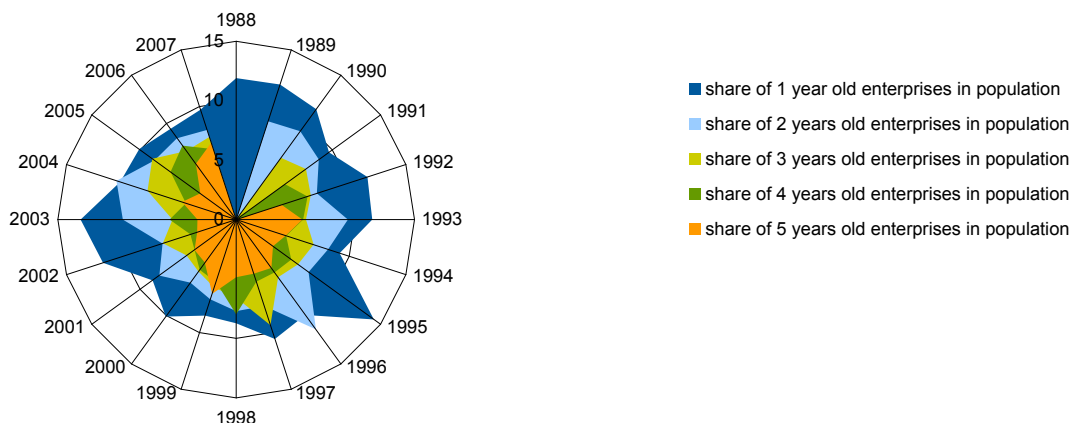
Note: Birth and death rates are composed by a numerator given by the number of total births and deaths, respectively, and by a denominator given by the total number of active employer enterprises in the reference period. The birth of an employer enterprise occurs when it starts its activity. It does not include entries into the population due to mergers and acquisitions, restructuring of enterprises or the reactivation of dormant units within a period of more than 2 years. This population is also composed of enterprises that although existed in previous years, were below the one employee threshold. Deaths occur due to the dissolution of the combination of production factors. They don't include exits from the population due to mergers, take-overs, break-ups or restructuring of enterprises. An enterprise death is counted only if it is not reactivated within 2 years.

Churn dynamics, 1987-2005



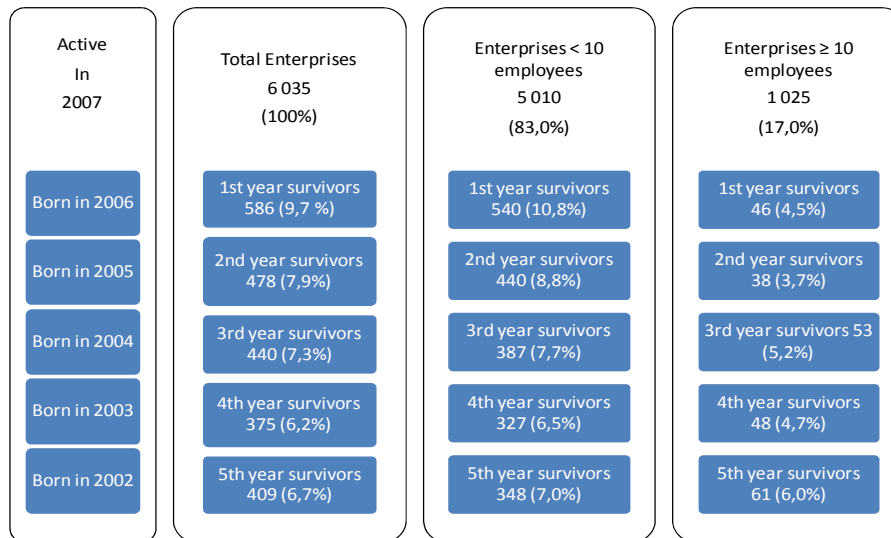
Note: The sum of all births and deaths of employer enterprises are at the top of the bars, and correspond to the churn rate.

Share of 1-5 years old enterprises in total population (%)

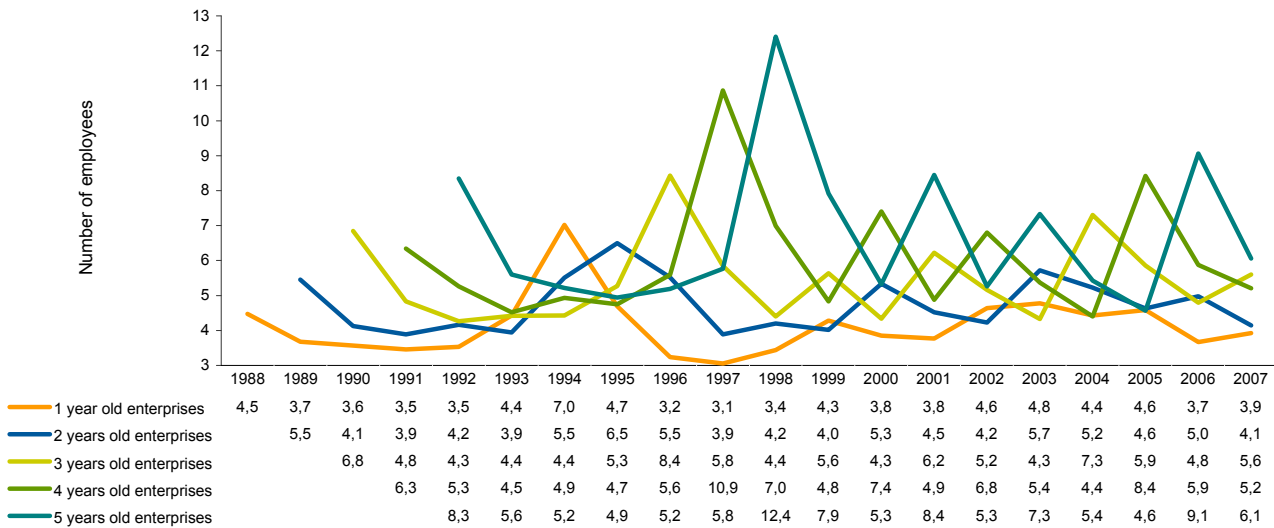


Source: GEE, based on E. de Moraes Sarmiento and A. Nunes, "Entrepreneurship Performance Indicators for active employer enterprises in Portugal", Temas Económicos nº 9, Ministério da Economia, da Inovação e do Desenvolvimento, based on Quadros de Pessoal, GEP, MTSS.

Age and survival, outlook for 2007



Average firm size (number of employees)



Probability of survival

(for enterprises born in the years below)

Years of survival	1987	1988	1989	1990	1991	1992	1993	1994	1995	1996	1997	1998	1999	2000	2001	2002	2003	2004
1	79,6%	84,4%	82,7%	85,4%	86,2%	80,2%	87,9%	86,4%	83,9%	80,3%	89,7%	84,4%	85,5%	82,1%	85,0%	87,0%	87,4%	90,2%
2	69,8%	72,9%	70,8%	74,6%	70,0%	69,4%	77,3%	77,1%	76,4%	68,6%	76,8%	72,2%	73,8%	72,2%	74,9%	76,4%	78,8%	
3	62,2%	68,5%	63,4%	63,1%	62,3%	63,7%	73,3%	68,5%	69,4%	64,4%	65,5%	62,5%	67,1%	63,7%	68,0%	70,9%		
4	56,3%	62,1%	55,1%	56,6%	58,0%	58,3%	67,7%	61,2%	61,2%	55,1%	57,4%	53,0%	61,2%	56,1%	61,7%			
5	51,2%	51,8%	50,0%	49,6%	54,4%	54,1%	63,5%	57,7%	55,8%	48,6%	52,0%	49,8%	55,3%	50,2%				
6	45,5%	47,3%	46,4%	45,6%	53,7%	51,1%	58,3%	53,3%	51,1%	44,9%	47,0%	46,9%	51,4%					
7	42,4%	44,6%	43,4%	42,6%	51,1%	48,6%	52,5%	48,6%	46,7%	42,5%	41,3%	42,5%						
8	40,3%	42,5%	40,9%	38,4%	49,3%	44,8%	50,1%	45,8%	42,0%	39,6%	37,4%							
9	38,6%	39,5%	37,1%	37,8%	46,5%	42,8%	47,6%	42,2%	40,1%	37,9%								
10	37,5%	38,2%	35,0%	35,7%	42,9%	40,7%	44,8%	39,0%	37,7%									
11	35,8%	35,5%	31,2%	34,0%	40,3%	37,2%	42,9%	36,4%										
12	33,2%	33,4%	28,8%	31,6%	37,4%	35,4%	40,4%											
13	31,2%	29,9%	25,3%	29,8%	33,9%	34,1%												
14	28,3%	28,5%	23,4%	28,5%	32,6%													
15	26,9%	27,2%	22,3%	27,8%														
16	24,3%	25,5%	21,7%															
17	23,1%	24,7%																
18	21,6%																	

Note: The non parametric Kaplan-Meier estimator was applied according to the following formula: $\hat{S}(t) = \prod_{j: t_j \leq t} \left(\frac{n_j - d_j}{n_j} \right)$
The probabilities relate to the enterprises ("cohorts") born in the above years mentioned.

Source: GEE, based on A. Nunes and E. de Moraes Sarmiento, "Survival dynamics in Portugal, a regional perspective", Proceedings of the European Regional Science Association and E. Sarmiento and A. Nunes, "Entrepreneurship Performance Indicators for active employer enterprises in Portugal", Temas Económicos nº 9, Ministério da Economia, da Inovação e do Desenvolvimento, based on Quadros de Pessoal, GEP, MTSS.

Employment

Employment in active employer enterprises										
Size class (number of employees)	1987 - 2000		2001 - 2005		2005		2006		2007	
	Average number of employees	Growth rate	Average number of employees	Growth rate	Number of employees	Growth rate	Number of employees	Growth rate	Number of employees	Growth rate
Total	31 266	3,7	47 338	3,8	50 894	1,9	51 096	0,4	52 744	3,2
1 - 4	4 955	3,7	6 976	3,6	7 509	5,1	7 755	3,3	7 825	0,9
5 - 9	4 274	4,4	6 605	3,8	6 926	0,0	7 127	2,9	6 783	-4,8
10 - 19	4 876	3,9	7 020	3,9	7 625	3,9	7 756	1,7	7 543	-2,7
20 - 49	5 217	4,7	7 812	3,1	8 128	1,9	8 609	5,9	9 278	7,8
50 - 249	7 750	1,3	10 233	5,6	11 360	3,3	11 336	-0,2	11 385	0,4
≥ 250	4 194	5,9	8 693	2,4	9 346	-2,1	8 513	-8,9	9 930	16,6

Job creation and destruction

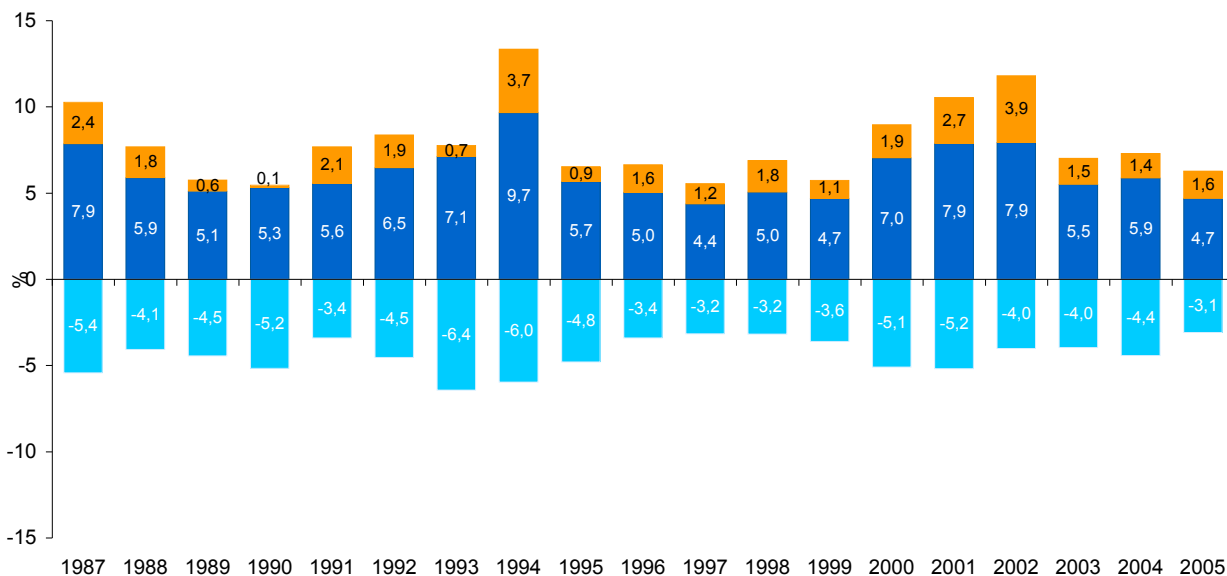
(thousands of employees)

Size class	Creation										Destruction									
	1987 - 2000		2001 - 2007		2005		2006		2007		1985 - 2000		2001 - 2005		2003		2004		2005	
	Average number	Birth rate (%)	Average number	Birth rate (%)	Nº	Birth rate (%)	Nº	Birth rate (%)	Nº	Birth rate (%)	Average number	Death rate (%)	Average number	Death rate (%)	Nº	Death rate (%)	Nº	Death rate (%)	Nº	Death rate (%)
Total	1,9	6,1	2,8	5,9	2,4	4,7	2,4	4,8	2,4	4,6	1,4	4,7	2,0	4,1	1,9	4,0	2,2	4,4	1,6	3,1
1 - 4	0,9	17,4	1,1	15,5	1,0	13,7	1,1	13,9	1,0	12,9	0,6	13,6	0,8	11,6	0,8	11,2	0,8	11,1	0,8	10,4
5 - 9	0,3	8,0	0,6	8,9	0,5	6,6	0,6	7,9	0,4	6,3	0,3	6,4	0,4	5,8	0,4	5,4	0,4	5,5	0,3	4,3
10 - 19	0,2	5,1	0,5	6,5	0,3	4,4	0,4	4,6	0,4	4,8	0,2	3,7	0,3	4,8	0,3	4,0	0,3	4,7	0,2	2,8
20 - 49	0,2	3,9	0,3	3,9	0,3	3,3	0,3	3,1	0,3	2,7	0,1	3,0	0,3	3,5	0,2	2,3	0,5	6,3	0,2	2,6
50 - 249	0,1	1,8	0,3	2,7	0,3	2,5	0,2	1,6	0,4	3,2	0,2	2,4	0,2	1,6	0,3	2,6	0,2	1,8	0,1	0,7
≥ 250	0,1	2,3	0,1	0,7	0,0	0,0	0,0	0,0	0,0	0,0	0,0	0,6	0,0	0,0	0,0	0,0	0,0	0,0	0,0	0,0

Note: Birth and Death rates are ratios composed by a numerator that corresponds to the total number of employees in employer enterprises that enter and exit the market yearly, respectively, and by a denominator that corresponds to total employment in active employer enterprises (according to the methodology of the "Manual on Business Demographic Statistics", Eurostat/OECD, 2007).

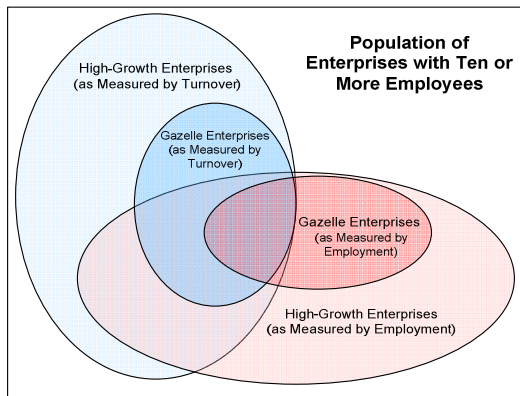
Net employment growth and its components (1987 - 2005)

- Job destruction due to exit
- Net job creation rates of existing firms
- Job creation due to entry



Source: GEE, based on E.de Morais Sarmiento and A. Nunes, "Entrepreneurship Performance Indicators for active employer enterprises in Portugal", Temas Económicos nº 9, Ministério da Economia, da Inovação e do Desenvolvimento, based on Quadros de Pessoal, GEP, MTSS.

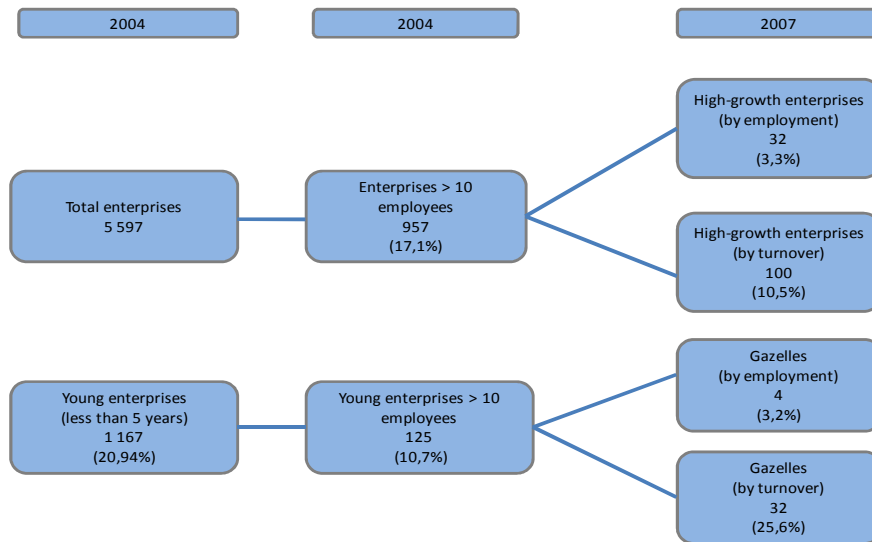
High-Growth Enterprises and Gazelles



A **High-growth enterprise** is an enterprise with average annualised growth greater than 20% per annum, over a three year period. Growth can be measured by the number of employees or by turnover.

Gazelles are high growth enterprises that are up to 5 years old.

High Growth Enterprises and Gazelles, outlook for 2007



High Growth Enterprises and Gazelles, by employment

Year	High growth enterprises				Gazelles			
	Enterprises		Employees		Enterprises		Employees	
	Nº	Weight in the population with at least 10 employees (%)	Nº	Weight in the population with at least 10 employees (%)	Nº	Weight in the population with at least 10 employees (%)	Nº	Weight in the population with at least 10 employees (%)
1990	22	3,91	1.192	6,06				
1991	18	3,15	696	3,50				
1992	25	4,07	1.617	7,61	3	0,53	357	1,81
1993	21	3,33	1.338	6,27				
1994	10	1,56	727	3,41	1	0,16	28	0,13
1995	24	3,83	1.316	6,30	3	0,48	119	0,56
1996	21	3,22	1.879	8,43	4	0,62	165	0,77
1997	18	2,68	2.629	9,28	6	0,96	1.373	6,57
1998	32	4,45	3.611	14,28	9	1,38	1.297	5,82
1999	30	3,98	1.557	5,94	4	0,60	257	0,91
2000	49	6,06	2.967	10,23	5	0,70	743	2,94
2001	50	5,87	4.308	13,73	7	0,93	1.002	3,82
2002	35	4,00	2.802	8,76	4	0,49	155	0,53
2003	33	3,59	3.094	9,34	5	0,59	468	1,49
2004	28	2,93	3.346	9,33	7	0,80	265	0,83
2005	31	3,14	4.458	12,23	11	1,20	1.205	3,64
2006	28	2,77	2.037	5,62	9	0,94	566	1,58
2007	32	3,12	1.965	4,28	4	0,41	280	0,77

Source: GEE, based on E. de Morais Sarmiento and A. Nunes, "Entrepreneurship Performance Indicators for active employer enterprises in Portugal", Temas Económicos nº 9, Ministério da Economia, da Inovação e do Desenvolvimento, based on Quadros de Pessoal, GEP, MTSS, according to "Manual of Business Demography Statistics", Eurostat/OCDE (2007).

METHODOLOGY

These results are based on the application of the “Manual of Business Demography Statistics” (Eurostat/OCCE, 2007) to the dataset called *Quadros do Pessoal*, from the *Gabinete de Planeamento e Estratégia* of the Portuguese Ministry of Labour and Social Security.

This analysis describes employer enterprises business dynamics from 1985 to 2007, considering firm longevity, survival, size, employment and the group of gazelles and high growth firms.

Only employer enterprises classified in sectors from sections A to Q of the Portuguese Economic Classification of Economic Activities (CAE-Rev.2.1) were considered.

MAIN DEFINITIONS

Enterprise¹: Represents the smaller combination of legal units that produces goods or services with certain autonomy of decision, particularly with respect to the allocation of its current resources. An enterprise might have one or more than one activity in one or more than one location. An enterprise may be represented only by one legal entity.

Employer enterprises: Enterprises from the active population of enterprises with at least one paid employee.

Employer enterprise births: Corresponds to the birth of an enterprise with at least one employee. This population consists of enterprise births that have at least one employee in the birth year and of enterprises that existed before the year in consideration, but were below the threshold of one employee. A birth occurs when an enterprise starts activity. Births do not include entries into the population which result from break-ups, spit-offs, mergers, restructuring of enterprises or reactivations of units which are dormant within a period of two years.

Birth rate: Number of births as a percentage of the population of active enterprises.

Death rate: Death rate of a given reference period (usually one calendar year) is the number of deaths as a percentage of the population of active enterprises. . Deaths do not include exits from the population due to mergers, take-overs, break-ups or restructuring of a set of enterprises. Moreover, deaths do not include exits from a sub-population if it results from a change of activity. Therefore, a death can occur because the enterprise ceases to trade or because it shrinks below the one employee threshold. The Eurostat/OECD manual recommends waiting for two years after the reference period to allow for reactivations, before deaths are calculated.

Survival probability: The survivor function reports the probability of a firm of surviving beyond time t (the moment of observation), that is the probability that there is no failure event (a “death”) prior to t . The function is equal to one at time $t=0$ and decreases towards zero as time (t) goes to infinity. Considering T a non-negative variable, denoting the time to a failure event (“death”), in this case given by the time taken by an enterprise to exit the market from the moment of entry, the survivor function is thus represented by:

$$S(t) = 1 - F(t) = \Pr(T > t)$$

With $F(t) = \Pr(T \leq t)$ being the cumulative distribution function.

To estimate the survivor function, $S(t)$, that is the probability of survival past time t or, equivalently, the probability of failure after t , the non-parametric Kaplan-Meier estimator was applied. For a dataset with observed failure times, t_1, \dots, t_k , where k is the number of distinct failure times observed in the data, the Kaplan-Meier estimate at any time t is given by:

¹ European Council Regulation (EEC), n°. 696/93, Section III A of 15.03.1993.

$$\hat{S}(t) = \prod_{j|t_j \leq t} \left(\frac{n_j - d_j}{n_j} \right)$$

Where n_j is the number of enterprises at risk at time t_j and d_j is the number of failures at time t_j . The product is done for all the failure periods, departing from time t .

High growth enterprises: Enterprises with average annualised growth greater than 20% per annum, over a three year period. Growth can be measured by the number of employees or by turnover.

Gazelles: All enterprises up to 5 years old with average annualised growth greater than 20% per annum, over a three years period. Gazelles by turnovers or employment are all employer enterprises that during a period of at least 5 years have had an annual average growth in terms of turnover or employment greater than or equal to 20 % per year, during the last 3 years, which employ at least 10 employees in the beginning of the 3 years period.

REFERENCES

Eurostat/OCDE (2007), "Eurostat-OECD Manual on Business Demography Statistics", available at: http://epp.eurostat.ec.europa.eu/cache/ITY_OFFPUB/KS-RA-07-010/EN/KS-RA-07-010-EN.PDF

OCDE (2007), "A Framework for Addressing and Measuring Entrepreneurship", Entrepreneurship Indicators Steering Group, available at: <http://www.oecd.org/dataoecd/21/51/39629644.pdf>

OECD/Eurostat (2009), "Measuring Entrepreneurship, A Collection of Indicators, 2009 Edition", OECD/Eurostat Entrepreneurship Indicators Programme, Statistics Directorate, available at: <http://www.oecd.org/statistics/measuringentrepreneurship>

Nunes, A. and E. de Morais Sarmiento, "Análise comparativa de sobrevivência: o caso da região Norte", *Proceedings of the Congress of the Portuguese Regional Development Association* (2010).

Nunes, A. and E. de Morais Sarmiento, "Survival dynamics in Portugal, a regional perspective", Livro de Actas da [European Regional Science Association](#).

Sarmiento, E. de Morais and A. Nunes, "Entrepreneurship Performance Indicators for active employer enterprises in Portugal", *Temas Económicos* nº 9, [Ministério da Economia, da Inovação e do Desenvolvimento](#), based on Quadros de Pessoal, GEP, MTSS.

Sarmiento, E. de Morais and A. Nunes, "Entrepreneurship Performance Indicators", based on Quadros de Pessoal, GEP, Ministério do Trabalho e da Solidariedade Social, presented at the *Workshop* from NIPE "[Economic Analysis using Linked Employer and Employee Data](#)", Universidade do Minho, Portugal.

¹ European Council Regulation (EEC), nº. 696/93, Section III A of 15.03.1993.