

Statistics of International Trade

Nº 02/2011

Includes baseline data from Statistics Portugal for the international trade of Portugal

■ From January to December of 2010 - Intra + Extra-EU Trade

Contents

Global Evolution

| | |
|---|--------|
| 1. Recent Trade Balance | Pag. 3 |
| 2. Trade Balance with and without energy products | 4 |
| 3. Trade Balance – aggregate data (Intra+Extra) | 4 |
| 4. Monthly and quarterly evolution | 5 |

Exports of Goods

| | |
|--|----|
| 5. By Group of Products (Intra+Extra) | 6 |
| 6. By Group of Products (Extra) | 7 |
| 7. By Group of Products – growth rate and contribution to growth | 8 |
| 8. From selected markets (Intra+Extra) | 9 |
| 9. From selected markets (Extra) | 10 |
| 10. By destination market – structure (%) | 10 |
| 11. By destination market – growth rate and contribution to growth | 11 |

Imports of Goods

| | |
|---|----|
| 12. By Group of Products (Intra+Extra EU) | 12 |
| 13. By Group of Products (Extra EU) | 13 |
| 14. From a selection of markets (Intra+Extra) | 13 |
| 15. From a selection of markets (Extra) | 14 |

By geographical and economic areas

| | |
|---|----|
| 16. Main Countries (Intra and Extra) | 15 |
| 17. Imports: contribution to growth (Intra and Extra) | 17 |
| 18. Exports: contribution to growth (Intra and Extra) | 19 |

Goods and Services

| | |
|--|----|
| 19. Trade in goods and services as a percentage of GDP | 21 |
| 20. Goods and Services (credit) – Services components | 22 |
| 21. Goods and Services (credit) – growth rate | 23 |
| 22. Goods and Services (debit) – Services components | 23 |

Charts Index

| | |
|--|----|
| 1. Rate of coverage of the imports by the exports of goods | 2 |
| 2. Growth rate of exports by Group of Products and contribution to growth | 7 |
| 3. Growth rate of exports by markets and contribution to growth | 9 |
| 4. Growth rate of imports by markets and contribution to growth | 14 |
| 5. Share of services in total trade | 21 |
| 6. Growth rate of exports of goods and services and contribution to growth | 22 |

NOTE

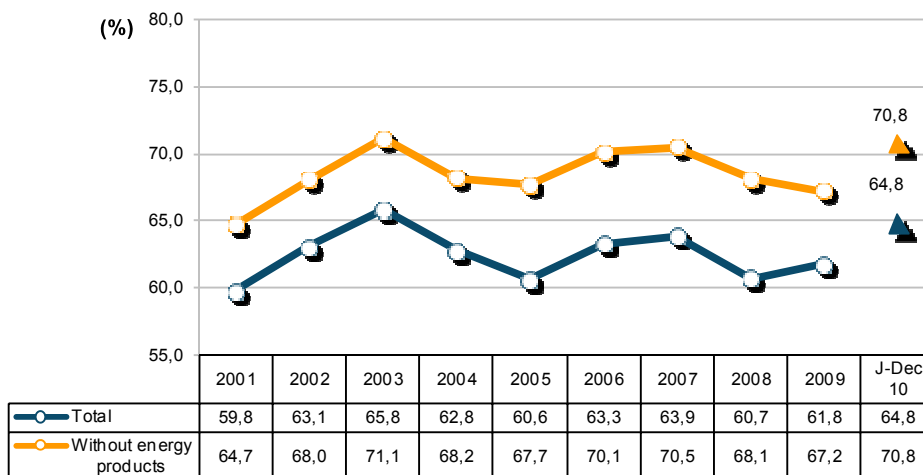
In June 2010, Statistics Portugal announced a new data series on International Trade for the period 1993-2009. This new series resulted from a review process of its methodology, which reflected the need to obtain results with greater reliability and accuracy, and includes, in addition to various methodological changes, new information reported by companies.

Since 1993, following the creation of the Single Market, the collection of information relating to international trade in goods is done by a new system supported by a compulsory survey (Intrastat declaration) for all operators, whose trade in goods with other Member States exceeds certain thresholds (assimilation threshold). Since 2005, and following the Community rules on quality control of the statistics on International Trade, a confrontation between regular information from the Intrastat system and data of an administrative nature was put in place, which included statements from Value Added Tax (VAT), as well as an analysis of the asymmetries with the statistics reported by other member countries. Following that, estimates for the total international trade, based on estimates for companies that are below the threshold of assimilation, as well as non-response of Intra-community trade started to be published.

The entry into force of “*Informação Empresarial Simplificada*” (IES) in 2007, contributed to ease the comparison of data on international trade with other sources, now made possible from 2006 onwards (reference period for the data). IES, along with information on the VAT constitutes an important source of information for the validity of the quality of the statistics on International Trade.

Global Evolution¹

Chart 1 – Progress of the coverage rate (fob/cif), % imports by exports of goods



Source: GEE, based on data on International Trade statistics from Statistics Portugal (new data series for 1993-2009; provisional version for 2009 and preliminary for 2010). Estimates for operators under assimilation threshold and non-responses are included in Intra-EU trade.

¹ Database of international trade (Intra and Extra EU) released by Statistics Portugal (SP) for the period January to December 2010, corresponding to preliminary versions for both intra and extra community trade. The data for intratrade includes estimates for non-responses (value of transactions of companies for which SP has not yet received information), as well as periodic reporting of companies that are below the assimilation threshold (annual value of intra-Community below which operators are exempted from Intrastat statistical declaration, limited to delivery of the periodic tax declaration: in the case of Portugal, 300 thousand euros for arrivals and 250 thousand for dispatches in 2010). On the other hand, the current methodology considers, in addition to the regular comparison between the Intrastat declarations and Value Added Tax (VAT), the comparison with the data obtained from “*Informação Empresarial Simplificada*” (IES).

Table 1 – Recent evolution of the Portuguese Trade Balance (Goods)

Preliminary data version of January to December 2010

| Intra + Extra-EU | January to December | | | Last 3 months | | |
|---------------------------------|---------------------|---------|----------|----------------------|----------------------|----------|
| | 2009 | 2010 | y.o.y. % | Oct. 09 - Dez. 09 | Oct. 09 - Dez. 09 | y.o.y. % |
| millions of Euros | | | | | | |
| Exports (fob) | 31 768 | 36 769 | 15,7 | 8 407 | 9 733 | 15,8 |
| Imports (cif) | 51 368 | 56 783 | 10,5 | 13 692 | 15 097 | 10,3 |
| Imports (fob) | 48 948 | 54 108 | 10,5 | 13 047 | 14 386 | 10,3 |
| Trade Balance (fob-cif) | -19 600 | -20 014 | 2,1 | -5 285 | -5 364 | 1,5 |
| Trade Balance (fob-fob) | -17 180 | -17 340 | 0,9 | -4 640 | -4 653 | 0,3 |
| Rate of Coverage (fob/cif), % | 61,8 | 64,8 | - | 61,4 | 64,5 | - |
| Rate of Coverage (fob/fob), % | 64,9 | 68,0 | - | 64,4 | 67,7 | - |
| Without energy products: | | | | | | |
| Exports (fob) | 30 181 | 34 285 | 13,6 | 7 939 | 9 188 | 15,7 |
| Imports (cif) | 44 895 | 48 459 | 7,9 | 11 932 | 12 976 | 8,8 |
| Imports (fob) | 42 781 | 46 177 | 7,9 | 11 370 | 12 365 | 8,8 |
| Trade Balance (fob-cif) | -14 714 | -14 174 | -3,7 | -3 992 | -3 788 | -5,1 |
| Trade Balance (fob-fob) | -12 600 | -11 891 | -5,6 | -3 430 | -3 177 | -7,4 |
| Rate of Coverage (fob/cif), % | 67,2 | 70,8 | - | 66,5 | 70,8 | - |
| Rate of Coverage (fob/fob), % | 70,5 | 74,2 | - | 69,8 | 74,3 | - |
| Millions US\$ | | | | | | |
| Exports (fob) | 44 357 | 48 747 | 9,9 | | | |
| Imports (cif) | 71 753 | 75 221 | 4,8 | | | |
| Imports (fob) | 68 373 | 71 678 | 4,8 | | | |
| Trade Balance (fob-cif) | -27 395 | -26 474 | -3,4 | | | |
| Trade Balance (fob-fob) | -24 016 | -22 932 | -4,5 | | | |

| Extra-EU | January to December | | | Last 3 months | | |
|---------------------------------|---------------------|--------|----------|----------------------|----------------------|----------|
| | 2009 | 2010 | y.o.y. % | Oct. 09 - Dez. 09 | Oct. 09 - Dez. 09 | y.o.y. % |
| millions of Euros | | | | | | |
| Exports (fob) | 7 804 | 9 206 | 18,0 | 2 077 | 2 447 | 17,8 |
| Imports (cif) | 11 003 | 13 848 | 25,9 | 2 940 | 3 409 | 16,0 |
| Imports (fob) | 10 484 | 13 196 | 25,9 | 2 801 | 3 249 | 16,0 |
| Trade Balance (fob-cif) | -3 198 | -4 642 | 45,1 | - 863 | - 962 | 11,5 |
| Trade Balance (fob-fob) | -2 680 | -3 990 | 48,9 | - 725 | - 802 | 10,6 |
| Rate of Coverage (fob/cif), % | 70,9 | 66,5 | - | 70,6 | 71,8 | - |
| Rate of Coverage (fob/fob), % | 74,4 | 69,8 | - | 74,1 | 75,3 | - |
| Without energy products: | | | | | | |
| Exports (fob) | 6 925 | 7 780 | 12,3 | 1 816 | 2 130 | 17,3 |
| Imports (cif) | 6 120 | 7 510 | 22,7 | 1 594 | 1 882 | 18,1 |
| Imports (fob) | 5 831 | 7 156 | 22,7 | 1 519 | 1 793 | 18,1 |
| Trade Balance (fob-cif) | 806 | 270 | -66,5 | 223 | 248 | 11,3 |
| Trade Balance (fob-fob) | 1 094 | 624 | -43,0 | 298 | 336 | 13,0 |
| Rate of Coverage (fob/cif), % | 113,2 | 103,6 | - | 114,0 | 113,2 | - |
| Rate of Coverage (fob/fob), % | 118,8 | 108,7 | - | 119,6 | 118,8 | - |

Source: GEE, based on data on International Trade statistics from Statistics Portugal (new data series for 1993-2009; provisional version for 2009 and preliminary for 2010). Estimates for operators under assimilation threshold and non-responses are included in Intra-EU trade.

Notes:

Sum of Dispatches to EU and Exports to third countries.

Sum of Arrivals from EU and Imports from third countries.

Conversion factor used cif-fob for 2008, 2009 and 2010: 0.9529

Table 2 – Trade Balance (goods) of Portugal with and without Energy Products (2005-2010)

values in Millions of Euros

| | 2005 | 2006 | 2007 | 2008 | 2009 | 2010 |
|--------------------------------|--------|--------|--------|--------|--------|--------|
| With Energy Products | | | | | | |
| Exports (fob) | 31 137 | 35 640 | 38 309 | 38 950 | 31 768 | 36 769 |
| y.o.y., % | 0,7 | 14,5 | 7,5 | 1,7 | -18,4 | 15,7 |
| Imports (cif) | 51 379 | 56 295 | 59 927 | 64 194 | 51 368 | 56 783 |
| y.o.y., % | 4,3 | 9,6 | 6,5 | 7,1 | -20,0 | 10,5 |
| Rate of Coverage (fob/cif), % | 60,6 | 63,3 | 63,9 | 60,7 | 61,8 | 64,8 |
| Without Energy Products | | | | | | |
| Exports (fob) | 29 871 | 33 753 | 36 568 | 36 688 | 30 181 | 34 285 |
| y.o.y., % | -0,7 | 13,0 | 8,3 | 0,3 | -17,7 | 13,6 |
| Imports (cif) | 44 116 | 48 175 | 51 870 | 53 884 | 44 895 | 48 459 |
| y.o.y., % | 0,0 | 9,2 | 7,7 | 3,9 | -16,7 | 7,9 |
| Rate of Coverage (fob/cif), % | 67,7 | 70,1 | 70,5 | 68,1 | 67,2 | 70,8 |

Memo:
Energy Products:

| | | | | | | |
|---------------|-------|-------|-------|--------|-------|-------|
| Exports (fob) | 1 267 | 1 888 | 1 741 | 2 262 | 1 587 | 2 483 |
| y.o.y., % | 50,6 | 49,0 | -7,8 | 29,9 | -29,8 | 56,5 |
| Imports (cif) | 7 263 | 8 120 | 8 056 | 10 310 | 6 473 | 8 323 |
| y.o.y., % | 40,8 | 11,8 | -0,8 | 28,0 | -37,2 | 28,6 |

Source: GEE, based on data on International Trade statistics from Statistics Portugal (new data series for 1993-2009; provisional version for 2009 and preliminary for 2010). Estimates for operators under assimilation threshold and non-responses are included in Intra-EU trade.

**Table 3 – Trade Balance
Aggregated data (Intra + Extra EU)**

values in Millions of Euros

| January to December | 2009 | 2010 | y.o.y., % |
|-------------------------------|---------|---------|-----------|
| Intra + Extra EU | | | |
| Exports | 31 768 | 36 769 | 15,7 |
| Imports | 51 368 | 56 783 | 10,5 |
| Trade Balance (fob-cif) | -19 600 | -20 014 | 2,1 |
| Rate of coverage (fob/cif), % | 61,8 | 64,8 | - |
| Intra EU | | | |
| Exports | 23 964 | 27 562 | 15,0 |
| Imports | 40 365 | 42 934 | 6,4 |
| Trade Balance (fob-cif) | -16 401 | -15 372 | -6,3 |
| Rate of coverage (fob/cif), % | 59,4 | 64,2 | - |
| Extra EU | | | |
| Exports | 7 804 | 9 206 | 18,0 |
| Imports | 11 003 | 13 848 | 25,9 |
| Trade Balance (fob-cif) | -3 199 | -4 642 | 45,1 |
| Rate of coverage (fob/cif), % | 70,9 | 66,5 | - |

Source: GEE, based on data on International Trade statistics from Statistics Portugal (new data series for 1993-2009; provisional version for 2009 and preliminary for 2010). Estimates for operators under assimilation threshold and non-responses are included in Intra-EU trade.

Table 4 – Monthly and quarterly evolution of Portuguese International Trade

Preliminary data version from January to December 2010

values in Millions of Euros

| Intra+Extra EU-27 | IMPORTS (cif) | | | EXPORTS (fob) | | |
|-------------------|---------------|--------|-----------|---------------|-------|-----------|
| | 2009 | 2010 | y.o.y., % | 2009 | 2010 | y.o.y., % |
| January | 4 048 | 4 014 | -0,9 | 2 473 | 2 608 | 5,5 |
| February | 3 775 | 4 230 | 12,1 | 2 424 | 2 719 | 12,1 |
| March | 4 430 | 5 029 | 13,5 | 2 649 | 3 333 | 25,8 |
| April | 3 997 | 4 485 | 12,2 | 2 524 | 2 962 | 17,4 |
| May | 3 984 | 4 679 | 17,4 | 2 572 | 3 048 | 18,5 |
| June | 4 408 | 5 544 | 25,8 | 2 703 | 3 137 | 16,1 |
| July | 4 697 | 4 645 | -1,1 | 3 117 | 3 402 | 9,2 |
| August | 3 590 | 4 177 | 16,4 | 2 041 | 2 512 | 23,1 |
| September | 4 747 | 4 884 | 2,9 | 2 857 | 3 314 | 16,0 |
| October | 4 691 | 5 060 | 7,9 | 2 980 | 3 274 | 9,9 |
| November | 4 718 | 4 990 | 5,8 | 2 911 | 3 332 | 14,4 |
| December | 4 283 | 5 047 | 17,8 | 2 517 | 3 128 | 24,3 |
| Q1 | 12 253 | 13 273 | 8,3 | 7 546 | 8 659 | 14,8 |
| Q2 | 12 389 | 14 708 | 18,7 | 7 799 | 9 148 | 17,3 |
| Q3 | 13 034 | 13 706 | 5,2 | 8 015 | 9 228 | 15,1 |
| Q4 | 13 692 | 15 097 | 10,3 | 8 407 | 9 733 | 15,8 |

| Intra EU-27 | IMPORTS (cif) | | | EXPORTS (fob) | | |
|-------------|---------------|--------|-----------|---------------|-------|-----------|
| | 2009 | 2010 | y.o.y., % | 2009 | 2010 | y.o.y., % |
| January | 3 160 | 3 040 | -3,8 | 1 901 | 2 028 | 6,7 |
| February | 3 161 | 3 148 | -0,4 | 1 841 | 2 062 | 12,0 |
| March | 3 483 | 3 841 | 10,3 | 2 020 | 2 469 | 22,2 |
| April | 3 145 | 3 428 | 9,0 | 1 941 | 2 232 | 15,0 |
| May | 3 150 | 3 473 | 10,2 | 1 944 | 2 297 | 18,2 |
| June | 3 323 | 4 099 | 23,3 | 2 074 | 2 368 | 14,2 |
| July | 3 762 | 3 569 | -5,1 | 2 285 | 2 520 | 10,3 |
| August | 2 741 | 2 940 | 7,3 | 1 465 | 1 799 | 22,8 |
| September | 3 688 | 3 708 | 0,6 | 2 162 | 2 501 | 15,7 |
| October | 3 608 | 3 793 | 5,1 | 2 253 | 2 462 | 9,3 |
| November | 3 640 | 3 901 | 7,2 | 2 197 | 2 546 | 15,9 |
| December | 3 504 | 3 993 | 13,9 | 1 881 | 2 277 | 21,0 |
| Q1 | 9 804 | 10 030 | 2,3 | 5 762 | 6 559 | 13,8 |
| Q2 | 9 618 | 11 000 | 14,4 | 5 959 | 6 898 | 15,8 |
| Q3 | 10 190 | 10 217 | 0,3 | 5 912 | 6 820 | 15,3 |
| Q4 | 10 752 | 11 687 | 8,7 | 6 331 | 7 286 | 15,1 |

| Extra EU-27 | IMPORTS (cif) | | | EXPORTS (fob) | | |
|-------------|---------------|-------|-----------|---------------|-------|-----------|
| | 2009 | 2010 | y.o.y., % | 2009 | 2010 | y.o.y., % |
| January | 888 | 974 | 9,6 | 572 | 580 | 1,5 |
| February | 614 | 1 082 | 76,3 | 584 | 657 | 12,5 |
| March | 946 | 1 187 | 25,5 | 629 | 864 | 37,2 |
| April | 852 | 1 057 | 24,1 | 583 | 730 | 25,1 |
| May | 834 | 1 206 | 44,6 | 628 | 751 | 19,7 |
| June | 1 085 | 1 445 | 33,1 | 630 | 769 | 22,2 |
| July | 935 | 1 076 | 15,0 | 832 | 883 | 6,1 |
| August | 849 | 1 237 | 45,8 | 576 | 713 | 23,8 |
| September | 1 059 | 1 175 | 11,0 | 695 | 812 | 16,9 |
| October | 1 083 | 1 267 | 17,0 | 727 | 811 | 11,6 |
| November | 1 078 | 1 088 | 1,0 | 714 | 786 | 10,0 |
| December | 779 | 1 054 | 35,3 | 635 | 850 | 33,9 |
| Q1 | 2 449 | 3 243 | 32,5 | 1 784 | 2 100 | 17,7 |
| Q2 | 2 771 | 3 708 | 33,8 | 1 841 | 2 250 | 22,3 |
| Q3 | 2 843 | 3 488 | 22,7 | 2 103 | 2 408 | 14,5 |
| Q4 | 2 940 | 3 409 | 16,0 | 2 077 | 2 447 | 17,8 |

Source: GEE, based on data on International Trade statistics from Statistics Portugal (new data series for 1993-2009; provisional version for 2009 and preliminary for 2010). Estimates for operators under assimilation threshold and non-responses are included in Intra-EU trade.

Exports* of Goods

Table 5 – Portuguese Exports (Intra + Extra EU) of Goods by Group of Products

Of which: products by Chapter (CN-2) above 30 million euros in 2010

| Grp/ CN-2 | Group of Products | (Intra + Extra-EU) | | | | | |
|--------------|---|--------------------|---------------|---------------|--------------|-------------|-------------------|
| | | Millions of euros | | Structure (%) | | 2010/2009 | |
| | | 2009 | 2010 | 2009 | 2010 | y.o.y., % | Contrib. p.p. [1] |
| | TOTAL EXPORTS (Intra + Extra EU) | 31 768 | 36 769 | 100,0 | 100,0 | 15,7 | 15,7 |
| 000 | Agricultural products and food | 4 045 | 4 284 | 12,7 | 11,7 | 5,9 | 0,8 |
| 22 | Beverages, spirits and vinegar | 853 | 900 | 2,7 | 2,4 | 5,6 | 0,1 |
| 03 | Fish and crustaceans, molluscs and other aquatic invertebrates | 396 | 543 | 1,2 | 1,5 | 37,0 | 0,5 |
| 24 | Tobacco and manufactured tobacco substitutes | 390 | 386 | 1,2 | 1,0 | -1,1 | 0,0 |
| 04 | Dairy produce; birds' eggs; natural honey; edible products of animal origin | 256 | 304 | 0,8 | 0,8 | 18,7 | 0,2 |
| 20 | Preparations of vegetables, fruit, nuts or other parts of plants | 317 | 296 | 1,0 | 0,8 | -6,6 | -0,1 |
| 15 | Animal or vegetable fats and oils and their cleavage products; prepared | 251 | 291 | 0,8 | 0,8 | 15,9 | 0,1 |
| 08 | Edible fruit and nuts; peel of citrus fruit or melons | 220 | 254 | 0,7 | 0,7 | 15,7 | 0,1 |
| 16 | Preparations of meat, of fish or of crustaceans, molluscs or other aquatic | 202 | 201 | 0,6 | 0,5 | -0,7 | 0,0 |
| 19 | Preparations of cereals, flour, starch or milk; pastrycooks' products | 180 | 194 | 0,6 | 0,5 | 7,6 | 0,0 |
| 07 | Edible vegetables and certain roots and tubers | 186 | 163 | 0,6 | 0,4 | -12,5 | -0,1 |
| 17 | Sugars and sugar confectionery | 184 | 148 | 0,6 | 0,4 | -19,4 | -0,1 |
| 21 | Miscellaneous edible preparations | 123 | 113 | 0,4 | 0,3 | -8,0 | 0,0 |
| 02 | Meat and edible meat offal | 93 | 95 | 0,3 | 0,3 | 2,0 | 0,0 |
| 23 | Residues and waste from the food industries; prepared animal fodder | 54 | 66 | 0,2 | 0,2 | 21,8 | 0,0 |
| 06 | Live trees and other plants; bulbs, roots and the like; cut flowers and orna | 54 | 56 | 0,2 | 0,2 | 3,6 | 0,0 |
| 09 | Coffee, tea, maté and spices | 44 | 49 | 0,1 | 0,1 | 12,6 | 0,0 |
| 05 | Products of animal origin, not elsewhere specified or included | 44 | 46 | 0,1 | 0,1 | 3,5 | 0,0 |
| 12 | Oil seeds and oleaginous fruits; miscellaneous grains, seeds and fruit; ind | 35 | 42 | 0,1 | 0,1 | 21,6 | 0,0 |
| 10 | Cereals | 45 | 32 | 0,1 | 0,1 | -27,8 | 0,0 |
| 100 | Mineral fuels and oils | 1 587 | 2 483 | 5,0 | 6,8 | 56,5 | 2,8 |
| 27 | Mineral fuels, mineral oils and products of their distillation; bituminous s | 1 587 | 2 483 | 5,0 | 6,8 | 56,5 | 2,8 |
| 200 | Chemicals | 3 570 | 4 374 | 11,2 | 11,9 | 22,5 | 2,5 |
| 39 | Plastics and articles thereof | 1 395 | 1 785 | 4,4 | 4,9 | 27,9 | 1,2 |
| 40 | Rubber and articles thereof | 624 | 752 | 2,0 | 2,0 | 20,5 | 0,4 |
| 29 | Organic chemicals | 351 | 544 | 1,1 | 1,5 | 54,7 | 0,6 |
| 30 | Pharmaceutical products | 454 | 465 | 1,4 | 1,3 | 2,3 | 0,0 |
| 32 | Tanning or dyeing extracts; tannins and their derivatives; dyes, pigments a | 155 | 178 | 0,5 | 0,5 | 14,8 | 0,1 |
| 38 | Miscellaneous chemical products | 169 | 166 | 0,5 | 0,5 | -1,6 | 0,0 |
| 33 | Essential oils and resinoids; perfumery, cosmetic or toilet preparations | 112 | 132 | 0,4 | 0,4 | 18,0 | 0,1 |
| 34 | Soap, organic surface-active agents, washing preparations, lubricating pre | 132 | 114 | 0,4 | 0,3 | -14,2 | -0,1 |
| 31 | Fertilisers | 47 | 111 | 0,1 | 0,3 | 136,8 | 0,2 |
| 28 | Inorganic chemicals; organic or inorganic compounds of precious metals, v | 63 | 63 | 0,2 | 0,2 | 0,4 | 0,0 |
| 35 | Albuminoidal substances; modified starches; glues; enzymes | 55 | 53 | 0,2 | 0,1 | -3,1 | 0,0 |
| 300 | Hides, wood, cork and paper | 2 658 | 3 366 | 8,4 | 9,2 | 26,6 | 2,2 |
| 48 | Paper and paperboard; articles of paper pulp, of paper or of paperboard | 1 086 | 1 536 | 3,4 | 4,2 | 41,4 | 1,4 |
| 45 | Cork and articles of cork | 695 | 754 | 2,2 | 2,1 | 8,5 | 0,2 |
| 44 | Wood and articles of wood; wood charcoal | 477 | 517 | 1,5 | 1,4 | 8,4 | 0,1 |
| 47 | Pulp of wood or of other fibrous cellulosic material; recovered (waste and | 328 | 489 | 1,0 | 1,3 | 48,9 | 0,5 |
| 49 | Printed books, newspapers, pictures and other products of the printing in | 71 | 69 | 0,2 | 0,2 | -2,5 | 0,0 |
| 400 | Textiles, clothing and footwear | 1 451 | 1 638 | 4,6 | 4,5 | 12,9 | 0,6 |
| 63 | Other made-up textile articles; sets; worn clothing and worn textile article | 460 | 518 | 1,4 | 1,4 | 12,5 | 0,2 |
| 55 | Man-made staple fibres | 182 | 225 | 0,6 | 0,6 | 23,3 | 0,1 |
| 56 | Wadding, felt and nonwovens; special yarns; twine, cordage, ropes and ca | 145 | 157 | 0,5 | 0,4 | 8,1 | 0,0 |
| 52 | Cotton | 134 | 141 | 0,4 | 0,4 | 5,4 | 0,0 |
| 59 | Impregnated, coated, covered or laminated textile fabrics; textile articles | 102 | 121 | 0,3 | 0,3 | 18,1 | 0,1 |
| 60 | Knitted or crocheted fabrics | 91 | 100 | 0,3 | 0,3 | 9,3 | 0,0 |
| 57 | Carpets and other textile floor coverings | 63 | 68 | 0,2 | 0,2 | 8,5 | 0,0 |
| 41 | Raw hides and skins (other than furskins) and leather | 50 | 65 | 0,2 | 0,2 | 30,1 | 0,0 |
| 51 | Wool, fine or coarse animal hair; horsehair yarn and woven fabric | 65 | 65 | 0,2 | 0,2 | -0,7 | 0,0 |
| 58 | Special woven fabrics; tufted textile fabrics; lace; tapestries; trimmings; e | 49 | 64 | 0,2 | 0,2 | 29,2 | 0,0 |
| 54 | Man-made filaments; strip and the like of man-made textile materials | 59 | 61 | 0,2 | 0,2 | 2,8 | 0,0 |
| 42 | Articles of leather; saddlery and harness; travel goods, handbags and simi | 39 | 42 | 0,1 | 0,1 | 5,5 | 0,0 |
| 500 | Ores and metals | 3 464 | 3 587 | 10,9 | 9,8 | 3,5 | 0,4 |
| 61 | Articles of apparel and clothing accessories, knitted or crocheted | 1 466 | 1 484 | 4,6 | 4,0 | 1,2 | 0,1 |
| 64 | Footwear, gaiters and the like; parts of such articles | 1 280 | 1 341 | 4,0 | 3,6 | 4,8 | 0,2 |
| 62 | Articles of apparel and clothing accessories, not knitted or crocheted | 688 | 730 | 2,2 | 2,0 | 6,1 | 0,1 |
| 600 | Machinery | 3 123 | 3 856 | 9,8 | 10,5 | 23,5 | 2,3 |
| 73 | Articles of iron or steel | 913 | 930 | 2,9 | 2,5 | 1,8 | 0,1 |
| 72 | Iron and steel | 651 | 917 | 2,1 | 2,5 | 40,8 | 0,8 |
| 76 | Aluminium and articles thereof | 449 | 504 | 1,4 | 1,4 | 12,3 | 0,2 |
| 26 | Ores, slag and ash | 292 | 406 | 0,9 | 1,1 | 38,8 | 0,4 |
| 25 | Salt; sulphur; earths and stone; plastering materials, lime and cement | 206 | 264 | 0,6 | 0,7 | 28,3 | 0,2 |
| 71 | Natural or cultured pearls, precious or semi-precious stones, precious me | 133 | 260 | 0,4 | 0,7 | 95,7 | 0,4 |
| 83 | Miscellaneous articles of base metal | 205 | 228 | 0,6 | 0,6 | 11,1 | 0,1 |
| 74 | Copper and articles thereof | 127 | 191 | 0,4 | 0,5 | 50,4 | 0,2 |
| 82 | Tools, implements, cutlery, spoons and forks, of base metal; parts thereo | 124 | 124 | 0,4 | 0,3 | -0,6 | 0,0 |
| 700 | Transport equipment | 5 138 | 5 483 | 16,2 | 14,9 | 6,7 | 1,1 |
| 85 | Electrical machinery and equipment and parts thereof; sound recorders a | 2 796 | 3 249 | 8,8 | 8,8 | 16,2 | 1,4 |
| 84 | Nuclear reactors, boilers, machinery and mechanical appliances; parts th | 2 343 | 2 233 | 7,4 | 6,1 | -4,7 | -0,3 |
| 800 | Other manufactured goods | 3 724 | 4 553 | 11,7 | 12,4 | 22,3 | 2,6 |
| 87 | Vehicles other than railway or tramway rolling stock, and parts and acces | 3 532 | 4 357 | 11,1 | 11,8 | 23,4 | 2,6 |
| 88 | Aircraft, spacecraft, and parts thereof | 86 | 139 | 0,3 | 0,4 | 61,5 | 0,2 |
| 89 | Ships, boats and floating structures | 96 | 49 | 0,3 | 0,1 | -48,7 | -0,1 |
| 900 | Other manufactured goods | 3 008 | 3 145 | 9,5 | 8,6 | 4,6 | 0,4 |
| 94 | Furniture; bedding, mattresses, mattress supports, cushions and similar s | 1 015 | 1 082 | 3,2 | 2,9 | 6,6 | 0,2 |
| 69 | Ceramic products | 525 | 536 | 1,7 | 1,5 | 2,2 | 0,0 |
| 70 | Glass and glassware | 427 | 472 | 1,3 | 1,3 | 10,6 | 0,1 |
| 90 | Optical, photographic, cinematographic, measuring, checking, precision, e | 308 | 350 | 1,0 | 1,0 | 13,5 | 0,1 |
| 68 | Articles of stone, plaster, cement, asbestos, mica or similar materials | 345 | 347 | 1,1 | 0,9 | 0,6 | 0,0 |
| 99 | Other Products | 188 | 148 | 0,6 | 0,4 | -21,4 | -0,1 |
| 91 | Clocks and watches and parts thereof | 38 | 61 | 0,1 | 0,2 | 59,2 | 0,1 |
| 95 | Toys, games and sports requisites; parts and accessories thereof | 53 | 47 | 0,2 | 0,1 | -10,9 | 0,0 |
| 96 | Miscellaneous manufactured articles | 38 | 47 | 0,1 | 0,1 | 25,0 | 0,0 |
| 93 | Arms and ammunition; parts and accessories thereof | 58 | 45 | 0,2 | 0,1 | -22,3 | 0,0 |

Memo:

| | | | | | | |
|-------------------------------|--------|--------|------|------|------|------|
| Total without Energy Products | 30 181 | 34 285 | 95,0 | 93,2 | 13,6 | 12,9 |
|-------------------------------|--------|--------|------|------|------|------|

Source: GEE, based on data on International Trade statistics from Statistics Portugal (new data series for 1993-2009; provisional version for 2009 and preliminary for 2010). Estimates for operators under assimilation threshold and non-responses are included in Intra-EU trade.

Notes

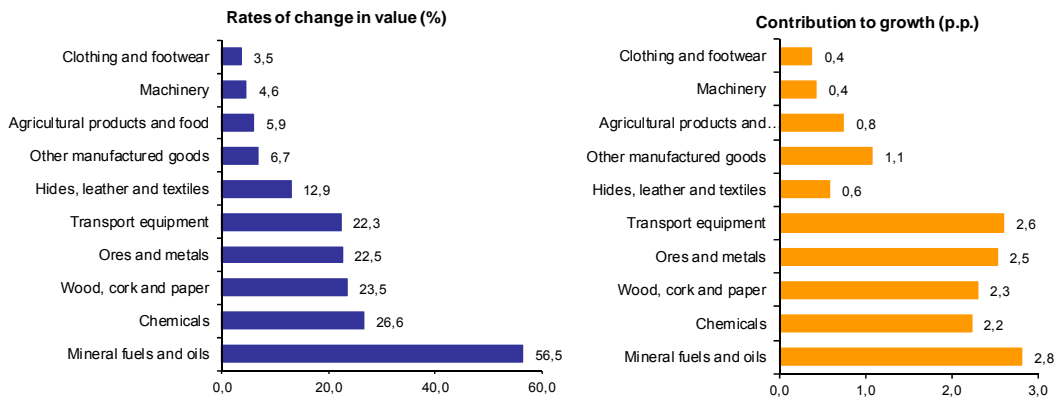
*Sum of Dispatches to EU and Exports to third countries.

Composition by Group of Products - 000 (Chap. 01 to 24 of NC) - 100 (Chap. 27) - 200 (Chap. 28 to 40) - 300 (Chap. 44 to 49) - 400 (Chap. 41 to 43, 50 to 60 and 63) - 500 (Chap. 61, 62, 64 to 67) - 600 (Chap. 25, 26, 71 to 83) - 700 (Chap. 84 and 85) - 800 (Chap. 86 to 89) - 900 (Chap. 68 to 70 and 90 to 99).

[1] Contribution to the growth rate of exports, shift share analysis: (rate of change) x (weight in the previous period) + 100.

Chart 2 - Growth rates of exports of Portuguese goods by group of products and its contribution to growth (Intra + Extra-EU)

Previous 12 months ending in December 2010



Source: Table 5 – Portuguese Exports (Intra + Extra EU) of Goods by Group of Products.

Table 6 - Portuguese Exports of Goods by Group of Products (Extra-EU)

Preliminary data version from January to December 2010

| Group of Products | Extra-EU (Fob) | | values in Millions of Euros | | |
|------------------------------------|----------------|--------------|-----------------------------|---------------|--------------|
| | 2009 | 2010 | y.o.y., (%) 10/09 | Structure (%) | |
| | | | | 2009 | 2010 |
| Total Exports | 7 804 | 9 206 | 18,0 | 100,0 | 100,0 |
| 000 Agricultural products and food | 1 023 | 1 199 | 17,2 | 13,1 | 13,0 |
| 100 Mineral fuels and oils | 879 | 1 427 | 62,3 | 11,3 | 15,5 |
| 200 Chemicals | 777 | 925 | 19,0 | 10,0 | 10,0 |
| 300 Wood, cork and paper | 701 | 916 | 30,7 | 9,0 | 9,9 |
| 400 Hides, leather and textiles | 377 | 441 | 16,9 | 4,8 | 4,8 |
| 500 Clothing and footwear | 247 | 267 | 7,8 | 3,2 | 2,9 |
| 600 Ores and metals | 828 | 971 | 17,2 | 10,6 | 10,5 |
| 700 Machinery | 1 694 | 1 728 | 2,0 | 21,7 | 18,8 |
| 800 Transport equipment | 530 | 562 | 6,2 | 6,8 | 6,1 |
| 900 Transport equipment | 747 | 772 | 3,3 | 9,6 | 8,4 |

Memo:

| | | | | | |
|-------------------------------|-------|-------|------|------|------|
| Total without Energy Products | 6 925 | 7 780 | 12,3 | 88,7 | 84,5 |
|-------------------------------|-------|-------|------|------|------|

Source: GEE, based on data on International Trade statistics from Statistics Portugal (new data series for 1993-2009; provisional version for 2009 and preliminary for 2010).

Notes:

Composition by Group of Products - 000 (Chap. 01 to 24 of NC) - 100 (Chap. 27) - 200 (Chap. 28 to 40) - 300 (Chap. 44 to 49) - 400 (Chap. 41 to 43, 50 to 60 and 63) - 500 (Chap. 61, 62, 64 to 67) - 600 (Chap. 25, 26, 71 to 83) - 700 (Chap. 84 and 85) - 800 (Chap. 86 to 89) - 900 (Chap. 68 to 70 and 90 to 99).

**Table - 7 – Exports (Intra+Extra EU) of Portuguese goods by Group of Products (2005-2010)
sorted in descending order of their relative weight in 2009**

Growth rate and Contribution to growth

| Grp. and CN-2 | Description | Share in 2009 (%) | y.o.y., % | | | | | | Contrib. (p.p.) ^[1] | |
|---------------|---|-------------------|------------|-------------|------------|------------|--------------|-------------|--------------------------------|-------------|
| | | | 2005 | 2006 | 2007 | 2008 | 2009 | 2010 | 2009 | 2010 |
| | TOTAL | 100,0 | 0,7 | 14,5 | 7,5 | 1,7 | -18,4 | 15,7 | -18,4 | 15,7 |
| 700 | Machinery | 16,2 | -0,1 | 16,1 | 7,6 | -0,8 | -31,4 | 6,7 | -6,0 | 1,1 |
| 85 | Electrical machinery and equipment and parts thereof; sound recorders and reproducers | 8,8 | -2,7 | 22,3 | 9,3 | -1,4 | -38,0 | 16,2 | -4,4 | 1,4 |
| 84 | Nuclear reactors, boilers, machinery and mechanical appliances; parts thereof | 7,4 | 3,5 | 8,0 | 5,1 | 0,0 | -21,5 | -4,7 | -1,6 | -0,3 |
| 000 | Agricultural products and food | 12,7 | 8,2 | 15,0 | 17,1 | 15,0 | -3,9 | 5,9 | -0,4 | 0,8 |
| 800 | Transport equipment | 11,7 | -6,6 | 9,2 | 2,8 | -2,7 | -21,4 | 22,3 | -2,6 | 2,6 |
| 87 | Vehicles other than railway or tramway rolling stock, and parts and accessories thereof | 11,1 | -3,3 | 14,3 | -0,7 | -3,5 | -19,5 | 23,4 | -2,2 | 2,6 |
| 200 | Chemicals | 11,2 | 11,8 | 13,1 | 12,0 | 0,9 | -14,2 | 22,5 | -1,5 | 2,5 |
| 39 | Plastics and articles thereof | 4,4 | 12,5 | 13,9 | 12,9 | 0,8 | -14,7 | 27,9 | -0,6 | 1,2 |
| 500 | Clothing and footwear | 10,9 | -11,1 | 2,3 | 1,9 | -2,9 | -11,4 | 3,5 | -1,1 | 0,4 |
| 61 | Articles of apparel and clothing accessories, knitted or crocheted | 4,6 | -15,4 | 3,7 | 0,6 | -5,5 | -12,1 | 1,2 | -0,5 | 0,1 |
| 64 | Footwear, gaiters and the like; parts of such articles | 4,0 | -7,3 | 2,2 | 2,7 | 2,6 | -8,0 | 4,8 | -0,3 | 0,2 |
| 600 | Ores and metals | 9,8 | 9,6 | 32,2 | 11,7 | -1,4 | -24,1 | 23,5 | -2,5 | 2,3 |
| 900 | Other manufactured goods | 9,5 | -5,7 | 10,8 | 13,0 | 2,6 | -2,3 | 4,6 | -0,2 | 0,4 |
| 94 | Furniture; bedding, mattresses, mattress supports, cushions and similar upholstered furniture | 3,2 | -3,3 | 9,2 | 13,6 | 3,5 | -6,9 | 6,6 | -0,2 | 0,2 |
| 300 | Wood, cork and paper | 8,4 | 0,1 | 11,3 | 7,7 | -2,1 | -18,5 | 26,6 | -1,5 | 2,2 |
| 48 | Paper and paperboard; articles of paper pulp, of paper or of paperboard | 3,4 | 1,3 | 11,6 | 6,6 | 3,5 | -6,2 | 41,4 | -0,2 | 1,4 |
| 100 | Mineral fuels and oils | 5,0 | 50,6 | 49,0 | -7,8 | 29,9 | -29,8 | 56,5 | -1,7 | 2,8 |
| 400 | Hides, leather and textiles | 4,6 | -4,0 | 6,5 | 4,3 | -5,7 | -15,9 | 12,9 | -0,7 | 0,6 |

Source: GEE, based on data on International Trade statistics from Statistics Portugal (new data series for 1993-2009; provisional version for 2009 and preliminary for 2010). Estimates for operators under assimilation threshold and non-responses are included in Intra-EU trade.

Notes

[1]Contributions to growth, shift share analysis: (rate of change) x (weight in the previous period) ÷ 100.

Table 8 – Exports (Intra+Extra EU) of goods to selected markets

Preliminary data version of January to December

Intra + Extra-EU (Fob)

| Destination | Millions of euros | | Structure (%) | | 2010/2009 | |
|--------------------------------|-------------------|---------------|---------------|--------------|-------------|------------------------------|
| | 2009 | 2010 | 2009 | 2010 | y.o.y., % | Contrib. p.p. ^[2] |
| TOTAL | 31 768 | 36 769 | 100,0 | 100,0 | 15,7 | 15,7 |
| INTRA EU(27) | 23 964 | 27 562 | 75,4 | 75,0 | 15,0 | 11,3 |
| of wich: | | | | | | |
| Intr: EU-15 | 23 056 | 26 424 | 72,6 | 71,9 | 14,6 | 10,6 |
| ES Spain | 8 653 | 9 787 | 27,2 | 26,6 | 13,1 | 3,6 |
| DE Germany | 4 100 | 4 772 | 12,9 | 13,0 | 16,4 | 2,1 |
| FR France | 3 941 | 4 332 | 12,4 | 11,8 | 9,9 | 1,2 |
| GB United Kingdom | 1 821 | 2 016 | 5,7 | 5,5 | 10,7 | 0,6 |
| IT Italy | 1 194 | 1 383 | 3,8 | 3,8 | 15,9 | 0,6 |
| NL Netherlands | 1 147 | 1 401 | 3,6 | 3,8 | 22,1 | 0,8 |
| BE Belgium | 778 | 1 052 | 2,4 | 2,9 | 35,2 | 0,9 |
| SE Sweden | 368 | 371 | 1,2 | 1,0 | 0,9 | 0,0 |
| DK Denmark | 242 | 258 | 0,8 | 0,7 | 6,9 | 0,1 |
| Intr: Enlargement | 908 | 1 138 | 2,9 | 3,1 | 25,3 | 0,7 |
| PL Poland | 270 | 320 | 0,9 | 0,9 | 18,2 | 0,2 |
| EXTRA EU(27) | 7 804 | 9 206 | 24,6 | 25,0 | 18,0 | 4,4 |
| of wich: | | | | | | |
| AO Angola | 2 242 | 1 911 | 7,1 | 5,2 | -14,8 | -1,0 |
| US United States | 1 012 | 1 333 | 3,2 | 3,6 | 31,7 | 1,0 |
| BR Brazil | 295 | 441 | 0,9 | 1,2 | 49,7 | 0,5 |
| CH Switzerland | 289 | 334 | 0,9 | 0,9 | 15,4 | 0,1 |
| CV Cape Verde | 223 | 264 | 0,7 | 0,7 | 18,6 | 0,1 |
| CN China, People's Republic of | 222 | 235 | 0,7 | 0,6 | 6,1 | 0,0 |
| MA Morocco | 215 | 305 | 0,7 | 0,8 | 41,6 | 0,3 |
| MX Mexico | 204 | 406 | 0,6 | 1,1 | 99,2 | 0,6 |
| TR Turkey | 202 | 268 | 0,6 | 0,7 | 32,2 | 0,2 |
| DZ Algeria | 197 | 217 | 0,6 | 0,6 | 9,7 | 0,1 |
| Memo: | | | | | | |
| RU Russian Federation | 96 | 120 | 0,3 | 0,3 | 25,6 | 0,1 |
| ACPOL ^[3] | 2 655 | 2 412 | 8,4 | 6,6 | -9,2 | -0,8 |
| EFTA | 377 | 420 | 1,2 | 1,1 | 11,6 | 0,1 |

Source: GEE, based on data on International Trade statistics from Statistics Portugal (new data series for 1993-2009; provisional version for 2009 and preliminary for 2010). Estimates for operators under assimilation threshold and non-responses are included in Intra-EU trade.

Notes:

Countries ranked in descending order of value in 2009.

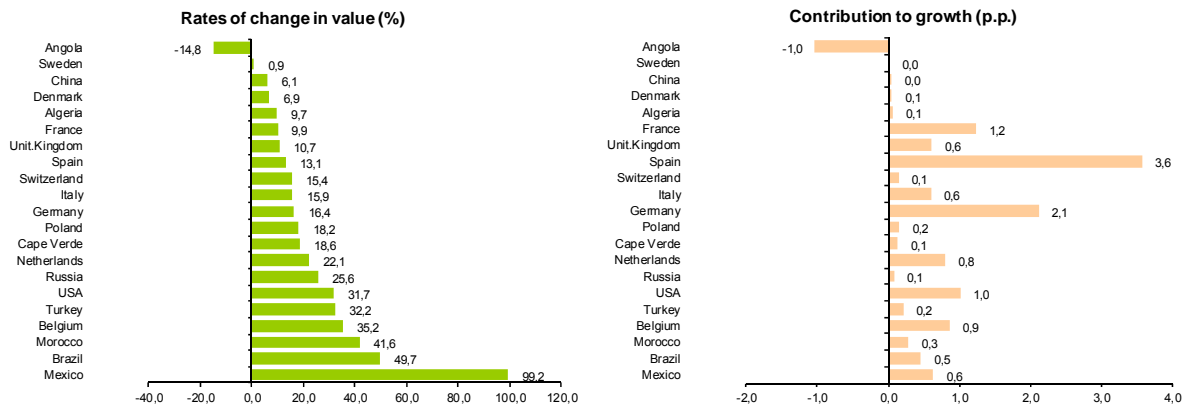
[1] (Jan 09-Dec 10)/(Jan 08-Dec 09) x 100 - 100

[2] Contributions to growth, shift share analysis: (rate of change) x (weight in the previous period) ÷ 100.

[3] African Countries of Portuguese Official Language

Chart 3 - Growth rates of Exports (Intra + Extra-EU) to selected markets and corresponding contributions to growth

Previous 12 months ending in December 2010



Source: Table 8 – Exports (Intra+Extra EU) of goods from selected markets.

**Table 9 - Exports of goods
to selected markets**
Preliminary version of January to December

| Extra-EU (Fob) | | | | | |
|-----------------------------|-------------------|--------------|---------------|--------------|--------------------|
| Destination | Millions of euros | | Structure (%) | | y.o.y., % 10/09 |
| | 2009 | 2010 | 2009 | 2010 | |
| EXTRA EU(27) | 7 804 | 9 206 | 100,0 | 100,0 | 18,0 |
| of which: | | | | | |
| Angola | 2 242 | 1 911 | 28,7 | 20,8 | -14,8 |
| United States | 1 012 | 1 333 | 13,0 | 14,5 | 31,7 |
| Brazil | 295 | 441 | 3,8 | 4,8 | 49,7 |
| Switzerland | 289 | 334 | 3,7 | 3,6 | 15,4 |
| Cape Verde | 223 | 264 | 2,9 | 2,9 | 18,6 |
| China, People's Republic of | 222 | 235 | 2,8 | 2,6 | 6,1 |
| Morocco | 215 | 305 | 2,8 | 3,3 | 41,6 |
| Mexico | 204 | 406 | 2,6 | 4,4 | 99,2 |
| Turkey | 202 | 268 | 2,6 | 2,9 | 32,2 |
| Algeria | 197 | 217 | 2,5 | 2,4 | 9,7 |
| Memo: | | | | | |
| Russian Federation | 96 | 120 | 1,2 | 1,3 | 25,6 |
| ACPOL ^[2] | 2 655 | 2 412 | 34,0 | 26,2 | -9,2 |
| EFTA | 377 | 420 | 4,8 | 4,6 | 11,6 |

Source: GEE, based on data on International Trade statistics from Statistics Portugal (new data series for 1993-2009; provisional version for 2009 and preliminary for 2010).

Notes:

[1] (Jan 09-Dec 10)/(Jan 08-Dec 09) x 100 - 100

[2] African Countries of Portuguese Official Language

Table 10 - Exports (Intra + Extra-EU) of Portuguese Goods to a selection of markets (2005-2010)
Main markets in 2009

| Destination | 2005 | 2006 | 2007 | 2008 | 2009 | 2010 |
|--------------------------|--------------|--------------|--------------|--------------|--------------|--------------|
| Total | 100,0 | 100,0 | 100,0 | 100,0 | 100,0 | 100,0 |
| INTRA EU(27) | 80,3 | 78,1 | 77,1 | 74,5 | 75,4 | 75,0 |
| EU-15 | 78,4 | 76,0 | 74,8 | 71,7 | 72,6 | 71,9 |
| Spain | 27,6 | 28,4 | 28,7 | 27,9 | 27,2 | 26,6 |
| Germany | 12,5 | 13,0 | 12,9 | 12,7 | 12,9 | 13,0 |
| France | 13,5 | 12,5 | 12,6 | 11,8 | 12,4 | 11,8 |
| United Kingdom | 8,3 | 6,9 | 6,0 | 5,5 | 5,7 | 5,5 |
| Italy | 4,4 | 4,1 | 4,2 | 3,8 | 3,8 | 3,8 |
| Netherlands | 4,0 | 3,7 | 3,5 | 3,3 | 3,6 | 3,8 |
| Belgium | 3,9 | 3,1 | 2,6 | 2,5 | 2,4 | 2,9 |
| After Enlargement | 1,8 | 2,1 | 2,4 | 2,8 | 2,9 | 3,1 |
| EXTRA EU(27) | 19,7 | 21,9 | 22,9 | 25,5 | 24,6 | 25,0 |
| Angola | 2,6 | 3,4 | 4,4 | 5,8 | 7,1 | 5,2 |
| United States | 5,3 | 5,9 | 4,7 | 3,4 | 3,2 | 3,6 |
| Brazil | 0,6 | 0,7 | 0,7 | 0,8 | 0,9 | 1,2 |
| Switzerland | 0,8 | 0,8 | 0,7 | 0,8 | 0,9 | 0,9 |
| Cape Verde | 0,5 | 0,5 | 0,6 | 0,7 | 0,7 | 0,7 |
| China, People's R | 0,5 | 0,6 | 0,5 | 0,5 | 0,7 | 0,6 |
| Morocco | 0,4 | 0,5 | 0,5 | 0,7 | 0,7 | 0,8 |
| Mexico | 0,3 | 0,4 | 0,3 | 0,6 | 0,6 | 1,1 |
| Turkey | 0,7 | 0,7 | 0,6 | 0,6 | 0,6 | 0,7 |
| Algeria | 0,2 | 0,2 | 0,2 | 0,5 | 0,6 | 0,6 |

Source: GEE, based on data on International Trade statistics from Statistics Portugal (new data series for 1993-2009; provisional version for 2009 and preliminary for 2010). Estimates for operators under assimilation threshold and non-responses are included in Intra-EU trade.

**Table 11 - Exports (Intra + Extra-EU) of Portuguese Goods to a selection of markets (2006-2010)
growth rate and contribution to growth ^[1]**
Main markets in 2009

| | Share in 2009 (%) | y.o.y., % | | | | | Contrib. (p.p.) ^[1] | |
|--------------------------|-------------------------|-------------|-------------|-------------|--------------|-------------|--------------------------------|-------------|
| | | 2006 | 2007 | 2008 | 2009 | 2010 | 2009 | 2010 |
| Total | 100,0 | 14,5 | 7,5 | 1,7 | -18,4 | 15,7 | -18,4 | 15,7 |
| INTRA EU(27) | 75,4 | 11,4 | 6,1 | -1,8 | -17,4 | 15,0 | -12,9 | 11,3 |
| EU-15 | 72,6 | 10,9 | 5,7 | -2,5 | -17,5 | 14,6 | -12,5 | 10,6 |
| Spain | 27,2 | 18,1 | 8,3 | -0,9 | -20,4 | 13,1 | -5,7 | 3,6 |
| Germany | 12,9 | 19,8 | 6,7 | -0,1 | -17,3 | 16,4 | -2,2 | 2,1 |
| France | 12,4 | 6,2 | 8,0 | -5,0 | -14,0 | 9,9 | -1,6 | 1,2 |
| United Kingdom | 5,7 | -4,6 | -5,8 | -8,1 | -14,2 | 10,7 | -0,8 | 0,6 |
| Italy | 3,8 | 6,6 | 10,5 | -6,9 | -19,7 | 15,9 | -0,7 | 0,6 |
| Netherlands | 3,6 | 6,8 | -0,6 | -3,6 | -10,2 | 22,1 | -0,3 | 0,8 |
| Belgium | 2,4 | -8,3 | -12,2 | -1,6 | -19,6 | 35,2 | -0,5 | 0,9 |
| After Enlargement | 2,9 | 33,1 | 18,4 | 19,2 | -15,7 | 25,3 | -0,4 | 0,7 |
| EXTRA EU(27) | 24,6 | 26,8 | 12,6 | 13,4 | -21,5 | 18,0 | -5,5 | 4,4 |
| Angola | 7,1 | 50,7 | 39,2 | 34,3 | -0,8 | -14,8 | 0,0 | -1,0 |
| United States | 3,2 | 27,4 | -15,1 | -25,0 | -24,5 | 31,7 | -0,8 | 1,0 |
| Brazil | 0,9 | 43,0 | 1,4 | 23,9 | -7,9 | 49,7 | -0,1 | 0,5 |
| Switzerland | 0,9 | 6,9 | -1,4 | 12,6 | -3,5 | 15,4 | 0,0 | 0,1 |
| Cape Verde | 0,7 | 27,5 | 20,2 | 13,0 | -13,5 | 18,6 | -0,1 | 0,1 |
| China, People's Republic | 0,7 | 25,4 | -15,3 | 1,6 | 20,5 | 6,1 | 0,1 | 0,0 |
| Morocco | 0,7 | 25,1 | 21,6 | 37,1 | -21,2 | 41,6 | -0,1 | 0,3 |
| Mexico | 0,6 | 61,5 | -13,8 | 85,3 | -8,5 | 99,2 | 0,0 | 0,6 |
| Turkey | 0,6 | 0,7 | -3,3 | -2,1 | -8,0 | 32,2 | 0,0 | 0,2 |
| Algeria | 0,6 | 32,0 | 9,6 | 126,9 | 9,0 | 9,7 | 0,0 | 0,1 |

Source: GEE, based on data on International Trade statistics from Statistics Portugal (new data series for 1993-2009; provisional version for 2009 and preliminary for 2010). Estimates for operators under assimilation threshold and non-responses are included in Intra-EU trade.

Notes:

[1] Contributions to growth, shift share analysis: (rate of change) x (weight in the previous period) ÷ 100.

Imports* of Goods

Table 12 - Portuguese Imports of goods by Group of Products

Of which: products by Chapter (CN-2) above 55 million euros in 2010

| Grp/ NC-2 | Groups of Products | Millions of euros | | Structure (%) | | 2010/2009 | |
|--------------|--|-------------------|---------------|---------------|--------------|--------------------|---------------------------------|
| | | 2009 | 2010 | 2009 | 2010 | y.o.y. % | Contrib. p.p. ^[1] |
| | | | | | | (Intra + Extra-EU) | |
| | TOTAL IMPORTS | 51 368 | 56 783 | 100,0 | 100,0 | 10,5 | 10,5 |
| 000 | Agricultural products and food | 7 565 | 7 831 | 14,7 | 13,8 | 3,5 | 0,5 |
| 03 | Fish and crustaceans, molluscs and other aquatic invertebrates | 1 149 | 1 247 | 2,2 | 2,2 | 8,6 | 0,2 |
| 02 | Meat and edible meat offal | 791 | 781 | 1,5 | 1,4 | -1,2 | 0,0 |
| 10 | Cereals | 612 | 628 | 1,2 | 1,1 | 2,6 | 0,0 |
| 08 | Edible fruit and nuts; peel of citrus fruit or melons | 462 | 513 | 0,9 | 0,9 | 11,1 | 0,1 |
| 12 | Oils seeds and oleaginous fruits; miscellaneous grains, seeds and fruit; indur | 459 | 509 | 0,9 | 0,9 | 10,9 | 0,1 |
| 04 | Dairy produce; birds' eggs; natural honey; edible products of animal origin | 515 | 490 | 1,0 | 0,9 | -4,8 | 0,0 |
| 15 | Animal or vegetable fats and oils and their cleavage products; prepared ec | 358 | 416 | 0,7 | 0,7 | 16,2 | 0,1 |
| 19 | Preparations of cereals, flour, starch or milk; pastrycooks' products | 406 | 415 | 0,8 | 0,7 | 2,2 | 0,0 |
| 22 | Beverages, spirits and vinegar | 398 | 391 | 0,8 | 0,7 | -1,6 | 0,0 |
| 21 | Miscellaneous edible preparations | 344 | 345 | 0,7 | 0,6 | 0,2 | 0,0 |
| 23 | Residues and waste from the food industries; prepared animal fodder | 292 | 311 | 0,6 | 0,5 | 6,4 | 0,0 |
| 07 | Edible vegetables and certain roots and tubers | 258 | 285 | 0,5 | 0,5 | 10,5 | 0,1 |
| 20 | Preparations of vegetables, fruit, nuts or other parts of plants | 247 | 255 | 0,5 | 0,4 | 3,5 | 0,0 |
| 17 | Sugars and sugar confectionery | 281 | 241 | 0,5 | 0,4 | -14,1 | -0,1 |
| 16 | Preparations of meat, of fish or of crustaceans, molluscs or other aquatic i | 198 | 195 | 0,4 | 0,3 | -1,4 | 0,0 |
| 01 | Live animals | 189 | 175 | 0,4 | 0,3 | -7,3 | 0,0 |
| 09 | Coffee, tea, maté and spices | 165 | 173 | 0,3 | 0,3 | 4,5 | 0,0 |
| 18 | Cocoa and cocoa preparations | 163 | 161 | 0,3 | 0,3 | -1,5 | 0,0 |
| 24 | Tobacco and manufactured tobacco substitutes | 84 | 107 | 0,2 | 0,2 | 27,1 | 0,0 |
| 06 | Live trees and other plants; bulbs, roots and the like; cut flowers and orna | | | | | | |
| 100 | Mineral fuels and oils | 6 473 | 8 323 | 12,6 | 14,7 | 28,6 | 3,6 |
| 27 | Mineral fuels, mineral oils and products of their distillation; bituminous st | 6 473 | 8 323 | 12,6 | 14,7 | 28,6 | 3,6 |
| 200 | Chemicals | 7 777 | 8 610 | 15,1 | 15,2 | 10,7 | 1,6 |
| 39 | Plastics and articles thereof | 1 909 | 2 202 | 3,7 | 3,9 | 15,4 | 0,6 |
| 30 | Pharmaceutical products | 2 169 | 2 157 | 4,2 | 3,8 | -0,6 | 0,0 |
| 29 | Organic chemicals | 717 | 950 | 1,4 | 1,7 | 32,5 | 0,5 |
| 40 | Rubber and articles thereof | 607 | 715 | 1,2 | 1,3 | 17,8 | 0,2 |
| 38 | Miscellaneous chemical products | 581 | 641 | 1,1 | 1,1 | 10,3 | 0,1 |
| 33 | Essential oils and resinoids; perfumery, cosmetic or toilet preparations | 533 | 549 | 1,0 | 1,0 | 3,0 | 0,0 |
| 32 | Tanning or dyeing extracts; tannins and their derivatives; dyes, pigments a | 435 | 478 | 0,8 | 0,8 | 9,9 | 0,1 |
| 34 | Soap, organic surface-active agents, washing preparations, lubricating pre | 320 | 334 | 0,6 | 0,6 | 4,6 | 0,0 |
| 28 | Inorganic chemicals; organic or inorganic compounds of precious metals, c | 210 | 255 | 0,4 | 0,4 | 21,5 | 0,1 |
| 31 | Fertilisers | 134 | 171 | 0,3 | 0,3 | 27,1 | 0,1 |
| 35 | Albuminoidal substances; modified starches; glues; enzymes | 79 | 85 | 0,2 | 0,1 | 8,2 | 0,0 |
| 37 | Photographic or cinematographic goods | 65 | 57 | 0,1 | 0,1 | -12,3 | 0,0 |
| 300 | Hides, wood, cork and paper | 2 349 | 2 581 | 4,6 | 4,5 | 9,9 | 0,5 |
| 48 | Paper and paperboard; articles of paper pulp, of paper or of paperboard | 1 056 | 1 078 | 2,1 | 1,9 | 2,0 | 0,0 |
| 44 | Wood and articles of wood; wood charcoal | 479 | 570 | 0,9 | 1,0 | 18,9 | 0,2 |
| 41 | Raw hides and skins (other than furskins) and leather | 293 | 349 | 0,6 | 0,6 | 19,3 | 0,1 |
| 42 | Articles of leather; saddlery and harness; travel goods, handbags and simi | 200 | 223 | 0,4 | 0,4 | 11,2 | 0,0 |
| 49 | Printed books, newspapers, pictures and other products of the printing in | 197 | 218 | 0,4 | 0,4 | 10,8 | 0,0 |
| 45 | Cork and articles of cork | 91 | 92 | 0,2 | 0,2 | 1,2 | 0,0 |
| 400 | Textiles, clothing and footwear | 3 495 | 3 861 | 6,8 | 6,8 | 10,5 | 0,7 |
| 61 | Articles of apparel and clothing accessories, knitted or crocheted | 790 | 871 | 1,5 | 1,5 | 10,3 | 0,2 |
| 62 | Articles of apparel and clothing accessories, not knitted or crocheted | 802 | 844 | 1,6 | 1,5 | 5,3 | 0,1 |
| 64 | Footwear, gaiters and the like; parts of such articles | 481 | 519 | 0,9 | 0,9 | 7,8 | 0,1 |
| 52 | Cotton | 362 | 466 | 0,7 | 0,8 | 28,7 | 0,2 |
| 54 | Man-made filaments; strip and the like of man-made textile materials | 204 | 247 | 0,4 | 0,4 | 21,0 | 0,1 |
| 55 | Man-made staple fibres | 189 | 221 | 0,4 | 0,4 | 17,3 | 0,1 |
| 63 | Other made-up textile articles; sets; worn clothing and worn textile article | 143 | 158 | 0,3 | 0,3 | 10,6 | 0,0 |
| 51 | Wool, fine or coarse animal hair; horsehair yarn and woven fabric | 102 | 102 | 0,2 | 0,2 | -0,1 | 0,0 |
| 59 | Impregnated, coated, covered or laminated textile fabrics; textile articles | 93 | 91 | 0,2 | 0,2 | -2,0 | 0,0 |
| 60 | Knitted or crocheted fabrics | 80 | 75 | 0,2 | 0,1 | -6,3 | 0,0 |
| 57 | Carpets and other textile floor coverings | 63 | 69 | 0,1 | 0,1 | 9,5 | 0,0 |
| 56 | Wadding, felt and nonwovens; special yarns; twine, cordage, ropes and ca | 56 | 58 | 0,1 | 0,1 | 3,3 | 0,0 |
| 500 | Ores and metals | 4 236 | 4 852 | 8,2 | 8,5 | 14,5 | 1,2 |
| 72 | Iron and steel | 1 479 | 1 798 | 2,9 | 3,2 | 21,5 | 0,6 |
| 73 | Articles of iron or steel | 962 | 890 | 1,9 | 1,6 | -7,5 | -0,1 |
| 76 | Aluminium and articles thereof | 603 | 716 | 1,2 | 1,3 | 18,7 | 0,2 |
| 74 | Copper and articles thereof | 412 | 576 | 0,8 | 1,0 | 39,7 | 0,3 |
| 83 | Miscellaneous articles of base metal | 234 | 242 | 0,5 | 0,4 | 3,8 | 0,0 |
| 71 | Natural or cultured pearls, precious or semi-precious stones, precious me | 143 | 186 | 0,3 | 0,3 | 30,5 | 0,1 |
| 82 | Tools, implements, cutlery, spoons and forks, of base metal; parts thereof | 175 | 165 | 0,3 | 0,3 | -5,7 | 0,0 |
| 25 | Salt; sulphur; earths and stone; plastering materials, lime and cement | 137 | 152 | 0,3 | 0,3 | 10,6 | 0,0 |
| 79 | Zinc and articles thereof | 44 | 65 | 0,1 | 0,1 | 46,9 | 0,0 |
| 600 | Machinery | 9 840 | 9 281 | 19,2 | 16,3 | -5,7 | -1,1 |
| 84 | Nuclear reactors, boilers, machinery and mechanical appliances; parts th | 5 326 | 4 750 | 10,4 | 8,4 | -10,8 | -1,1 |
| 85 | Electrical machinery and equipment and parts thereof; sound recorders a | 4 514 | 4 531 | 8,8 | 8,0 | 0,4 | 0,0 |
| 700 | Transport equipment | 6 260 | 8 010 | 12,2 | 14,1 | 27,9 | 3,4 |
| 87 | Vehicles other than railway or tramway rolling stock, and parts and access | 5 206 | 6 645 | 10,1 | 11,7 | 27,6 | 2,8 |
| 89 | Ships, boats and floating structures | 204 | 1 076 | 0,4 | 1,9 | 426,4 | 1,7 |
| 88 | Aircraft, spacecraft, and parts thereof | 572 | 259 | 1,1 | 0,5 | -54,8 | -0,6 |
| 800 | Other manufactured goods | 3 372 | 3 434 | 6,6 | 6,0 | 1,8 | 0,1 |
| 90 | Optical, photographic, cinematographic, measuring, checking, precision, n | 1 066 | 1 093 | 2,1 | 1,9 | 2,6 | 0,1 |
| 94 | Furniture; bedding, mattresses, mattress supports, cushions and similar s | 841 | 770 | 1,6 | 1,4 | -8,5 | -0,1 |
| 95 | Toys, games and sports requisites; parts and accessories thereof | 372 | 374 | 0,7 | 0,7 | 0,5 | 0,0 |
| 70 | Glass and glassware | 323 | 351 | 0,6 | 0,6 | 8,8 | 0,1 |
| 68 | Articles of stone, plaster, cement, asbestos, mica or similar materials | 218 | 166 | 0,4 | 0,3 | -23,9 | -0,1 |
| 91 | Clocks and watches and parts thereof | 117 | 138 | 0,2 | 0,2 | 17,6 | 0,0 |
| 69 | Ceramic products | 148 | 133 | 0,3 | 0,2 | -10,1 | 0,0 |
| 98 | Complete industrial plant | 0 | 125 | 0,0 | 0,2 | 0,0 | 0,0 |
| 96 | Miscellaneous manufactured articles | 96 | 101 | 0,2 | 0,2 | 5,1 | 0,0 |
| 99 | Other Products | 78 | 85 | 0,2 | 0,1 | 8,7 | 0,0 |
| 93 | Arms and ammunition; parts and accessories thereof | 76 | 66 | 0,1 | 0,1 | -13,0 | 0,0 |

Memo:

| | | | | | | |
|-------------------------------|--------|--------|------|------|-----|-----|
| Total without Energy Products | 44 895 | 48 459 | 87,4 | 85,3 | 7,9 | 6,9 |
|-------------------------------|--------|--------|------|------|-----|-----|

Source: GEE, based on data on International Trade statistics from Statistics Portugal (new data series for 1993-2009; provisional version for 2009 and preliminary for 2010). Estimates for operators under assimilation threshold and non-responses are included in Intra-EU trade.

Notes:

Sum of Arrivals from EU and Imports from third countries.

Composition by Group of Products - 000 (Chap. 01 to 24 of NC) - 100 (Chap. 27) - 200 (Chap. 28 to 40) - 300 (Chap. 44 to 49) - 400 (Chap. 41 to 43, 50 to 60 and 63) - 500 (Chap. 61, 62, 64 to 67) - 600 (Chap. 25, 26, 71 to 83) - 700 (Chap. 84 and 85) - 800 (Chap. 86 to 89) - 900 (Chap. 68 to 70 and 90 to 99).

[1] Contributions to growth, shift share analysis: (rate of change) x (weight in the previous period) = 100.

[2] Does not include tractors.

[3] Includes tractors.

Table 13 - Portuguese Imports by Group of Products (Extra-EU)

Preliminary data version of January to December

| Group of Products | values in Millions of Euros | | | | | |
|-------------------------------------|-----------------------------|---------------|-------------|--------------|---------------|--|
| | 2009 | 2010 | y.o.y., % | | Structure (%) | |
| | | | 10/09 | 2009 | 2010 | |
| Extra-EU (Fob) | | | | | | |
| Total Imports | 11 003 | 13 849 | 25,9 | 100,0 | 100,0 | |
| 000 Agricultural products and food | 1 505 | 1 653 | 9,9 | 13,7 | 11,9 | |
| 100 Mineral fuels and oils | 4 883 | 6 339 | 29,8 | 44,4 | 45,8 | |
| 200 Chemicals | 792 | 1 176 | 48,5 | 7,2 | 8,5 | |
| 300 Hides, wood, cork and paper | 298 | 425 | 42,5 | 2,7 | 3,1 | |
| 400 Textiles, clothing and footwear | 619 | 859 | 38,8 | 5,6 | 6,2 | |
| 500 Ores and metals | 686 | 806 | 17,6 | 6,2 | 5,8 | |
| 600 Machinery | 1 273 | 1 487 | 16,8 | 11,6 | 10,7 | |
| 700 Transport equipment | 528 | 632 | 19,8 | 4,8 | 4,6 | |
| 800 Other manufactured goods | 420 | 472 | 12,3 | 3,8 | 3,4 | |

Memo:

| | | | | | |
|--------------------------------------|-------|-------|------|------|------|
| <i>Total without Energy Products</i> | 6 120 | 7 510 | 22,7 | 55,6 | 54,2 |
|--------------------------------------|-------|-------|------|------|------|

Source: GEE, based on data on International Trade statistics from Statistics Portugal (new data series for 1993-2009; provisional version for 2009 and preliminary for 2010).

Notes:

Composition by Group of Products - 000 (Chap. 01 to 24 of NC) - 100 (Chap. 27) - 200 (Chap. 28 to 40) - 300 (Chap. 44 to 49) - 400 (Chap. 41 to 43, 50 to 60 and 63) - 500 (Chap. 61, 62, 64 to 67) - 600 (Chap. 25, 26, 71 to 83) - 700 (Chap. 84 and 85) - 800 (Chap. 86 to 89) - 900 (Chap. 68 to 70 and 90 to 99).

[1] Does not include farm tractors.

Table 14 - Imports of goods originating from selected markets

Preliminary data version of January to December

| Country of Origin | Millions of Euros | | Structure (%) | | 2010/2009 | |
|-----------------------------|-------------------|---------------|---------------|--------------|-------------|-------------------|
| | 2009 | 2010 | 2009 | 2010 | y.o.y., % | Contrib. p.p. [2] |
| | | | | | | |
| TOTAL | 51 368 | 56 783 | 100,0 | 100,0 | 10,5 | 10,5 |
| INTRA EU(27) | 40 365 | 42 934 | 78,6 | 75,6 | 6,4 | 5,0 |
| of which: | | | | | | |
| EU-15 | 39 145 | 41 615 | 76,2 | 73,3 | 6,3 | 4,8 |
| Spain | 16 765 | 17 685 | 32,6 | 31,1 | 5,5 | 1,8 |
| Germany | 6 813 | 7 887 | 13,3 | 13,9 | 15,8 | 2,1 |
| France | 4 288 | 4 101 | 8,3 | 7,2 | -4,4 | -0,4 |
| Italy | 2 979 | 3 232 | 5,8 | 5,7 | 8,5 | 0,5 |
| Netherlands | 2 812 | 2 928 | 5,5 | 5,2 | 4,1 | 0,2 |
| United Kingdom | 1 697 | 2 130 | 3,3 | 3,8 | 25,5 | 0,8 |
| Belgium | 1 455 | 1 612 | 2,8 | 2,8 | 10,8 | 0,3 |
| Sweden | 520 | 583 | 1,0 | 1,0 | 12,2 | 0,1 |
| Ireland | 516 | 538 | 1,0 | 0,9 | 4,4 | 0,0 |
| Enlargement | 1 221 | 1 320 | 2,4 | 2,3 | 8,1 | 0,2 |
| EXTRA EU(27) | 11 003 | 13 848 | 21,4 | 24,4 | 25,9 | 5,5 |
| of which: | | | | | | |
| Nigeria | 1 243 | 1 377 | 2,4 | 2,4 | 10,8 | 0,3 |
| China, People's Republic of | 1 115 | 1 576 | 2,2 | 2,8 | 41,4 | 0,9 |
| Brazil | 888 | 1 047 | 1,7 | 1,8 | 17,9 | 0,3 |
| Norway | 587 | 529 | 1,1 | 0,9 | -9,8 | -0,1 |
| Russian Federation | 529 | 413 | 1,0 | 0,7 | -21,8 | -0,2 |
| Saudi Arabia | 406 | 527 | 0,8 | 0,9 | 30,0 | 0,2 |
| Libyan Arab Jamahiriya | 333 | 738 | 0,6 | 1,3 | 121,6 | 0,8 |
| Switzerland | 329 | 370 | 0,6 | 0,7 | 12,4 | 0,1 |
| Japan | 285 | 363 | 0,6 | 0,6 | 27,3 | 0,2 |
| Turkey | 284 | 321 | 0,6 | 0,6 | 13,3 | 0,1 |
| Korea, Republic of | 278 | 247 | 0,5 | 0,4 | -11,2 | -0,1 |
| Algeria | 275 | 269 | 0,5 | 0,5 | -2,0 | 0,0 |
| India | 268 | 411 | 0,5 | 0,7 | 53,5 | 0,3 |

Memo:

| | | | | | | |
|-----------|-------|-------|-----|-----|-------|-----|
| OPED [3] | 2 975 | 3 882 | 5,8 | 6,8 | 30,5 | 1,8 |
| EFTA | 939 | 914 | 1,8 | 1,6 | -2,6 | 0,0 |
| ACPOL [4] | 203 | 601 | 0,4 | 1,1 | 196,0 | 0,8 |

Source: GEE, based on data on International Trade statistics from Statistics Portugal (new data series for 1993-2009; provisional version for 2009 and preliminary for 2010).

Notes:

[1](Jan 09-Dec 10)/(Jan 08-Dec 09) x 100 - 100

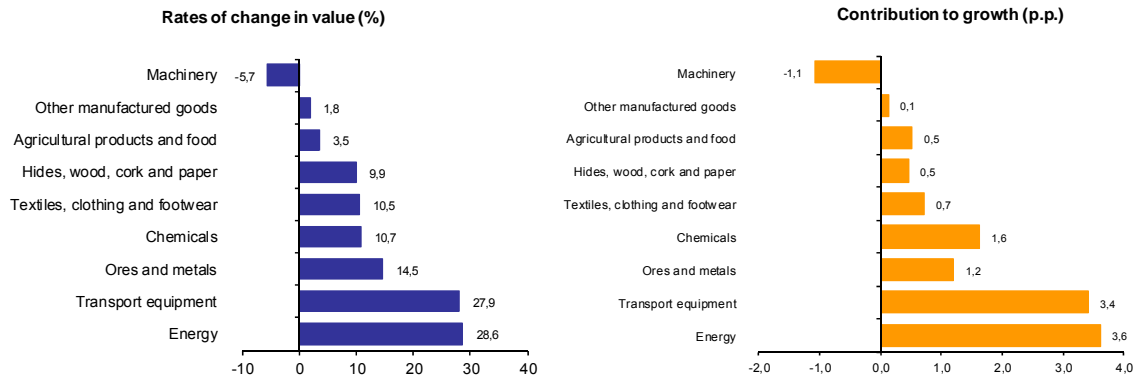
[2]Contributions to growth, shift share analysis: (rate of change) x (weight in the previous period) ÷ 100.

[3]Includes Angola

[4]African Countries of Portuguese Official Language

Chart 4 - Growth rates of Portuguese Imports (Intra + Extra-EU) of goods by Group of Products and contribution to growth

Previous 12 months ending in December 2010



Source: Table 12 - Portuguese Imports of goods by Groups of Products.

Table 15 - Imports of goods from selected markets

Preliminary data version of January to December

| Extra-EU (Cif) | | | | | |
|--------------------------|-------------------|---------------|---------------|--------------|--------------------|
| Country of Origin | Millions of Euros | | Structure (%) | | y.o.y., % 10/09 |
| | 2009 | 2010 | 2009 | 2010 | |
| EXTRA EU(27) | 11 003 | 13 848 | 100,0 | 100,0 | 25,9 |
| of which: | | | | | |
| Nigeria | 1 243 | 1 377 | 11,3 | 9,9 | 10,8 |
| China, People's Republic | 1 115 | 1 576 | 10,1 | 11,4 | 41,4 |
| Brazil | 888 | 1 047 | 8,1 | 7,6 | 17,9 |
| United States | 864 | 843 | 7,9 | 6,1 | -2,4 |
| Norway | 587 | 529 | 5,3 | 3,8 | -9,8 |
| Russian Federation | 529 | 413 | 4,8 | 3,0 | -21,8 |
| Saudi Arabia | 406 | 527 | 3,7 | 3,8 | 30,0 |
| Libyan Arab Jamahiriya | 333 | 738 | 3,0 | 5,3 | 121,6 |
| Switzerland | 329 | 370 | 3,0 | 2,7 | 12,4 |
| Japan | 285 | 363 | 2,6 | 2,6 | 27,3 |
| Turkey | 284 | 321 | 2,6 | 2,3 | 13,3 |
| Korea, Republic of | 278 | 247 | 2,5 | 1,8 | -11,2 |
| Algeria | 275 | 269 | 2,5 | 1,9 | -2,0 |
| India | 268 | 411 | 2,4 | 3,0 | 53,5 |
| Memo: | | | | | |
| OPEC ^[2] | 2 975 | 3 882 | 27,0 | 28,0 | 30,5 |
| EFTA | 939 | 914 | 8,5 | 6,6 | -2,6 |
| ACPOL ^[3] | 203 | 601 | 1,8 | 4,3 | 196,0 |

Source: GEE, based on data on International Trade statistics from Statistics Portugal (new data series for 1993-2009; provisional version for 2009 and preliminary for

Notes:

Countries ranked in descending order of value in 2009.

Notes:

[1](Jan 09-Dec 10)/(Jan 08-Dec 09) x 100 - 100

[2]Includes Angola

[3]African Countries of Portuguese Official Language

By geographical and economic areas

**Table 16 - Portuguese International trade
by geographical and economic areas (Intra + Extra-EU)**

Period of assessment: January to December

Values in 1000 Euros

| Geographic/ Economic Areas | | IMPORTS (Cif) ^[1] | | | | EXPORTS (Fob) ^[2] | | | | Coverage (fob/cif) 2010 | Trade Balance (fob-cif) | |
|----------------------------|----------------------------|------------------------------|-------------------|------------------|----------------|------------------------------|-------------------|------------------|----------------|-------------------------|-------------------------|--------------------|
| | | 2009 | 2010 | Rate of Change % | Struct. 2010 % | 2009 | 2010 | Rate of Change % | Struct. 2010 % | | 2009 | 2010 |
| Cod | Main Countries | | | | | | | | | | | |
| | WORLD | 51 367 886 | 56 782 601 | 10,5 | 100,0 | 31 768 156 | 36 768 509 | 15,7 | 100,0 | 64,8 | -19 599 730 | -20 014 092 |
| | INTRA EU(27) | 40 365 378 | 42 934 118 | 6,4 | 75,6 | 23 963 790 | 27 562 128 | 15,0 | 75,0 | 64,2 | -16 401 587 | -15 371 990 |
| 001 | FR France | 4 288 227 | 4 101 087 | -4,4 | 7,2 | 3 940 828 | 4 332 395 | 9,9 | 11,8 | 105,6 | -347 399 | 231 308 |
| 003 | NL Netherlands | 2 812 231 | 2 928 279 | 4,1 | 5,2 | 1 147 102 | 1 400 821 | 22,1 | 3,8 | 47,8 | -1 665 129 | -1 527 459 |
| 004 | DE Germany | 6 813 091 | 7 886 527 | 15,8 | 13,9 | 4 099 667 | 4 771 584 | 16,4 | 13,0 | 60,5 | -2 713 423 | -3 114 943 |
| 005 | IT Italy | 2 979 271 | 3 231 851 | 8,5 | 5,7 | 1 193 789 | 1 383 121 | 15,9 | 3,8 | 42,8 | -1 785 482 | -1 848 730 |
| 006 | GB United Kingdom | 1 696 816 | 2 130 343 | 25,5 | 3,8 | 1 821 117 | 2 015 502 | 10,7 | 5,5 | 94,6 | 124 300 | -114 840 |
| 007 | IE Ireland | 515 522 | 538 257 | 4,4 | 0,9 | 119 837 | 105 802 | -11,7 | 0,3 | 19,7 | -395 685 | -432 456 |
| 008 | DK Denmark | 307 893 | 314 062 | 2,0 | 0,6 | 241 731 | 258 422 | 6,9 | 0,7 | 82,3 | -66 162 | -55 640 |
| 009 | GR Greece | 104 619 | 107 775 | 3,0 | 0,2 | 111 579 | 107 943 | -3,3 | 0,3 | 100,2 | 6 960 | 167 |
| 011 | ES Spain | 16 764 743 | 17 685 210 | 5,5 | 31,1 | 8 652 918 | 9 786 636 | 13,1 | 26,6 | 55,3 | -8 111 825 | -7 898 574 |
| 017 | BE Belgium | 1 455 370 | 1 612 085 | 10,8 | 2,8 | 777 798 | 1 051 534 | 35,2 | 2,9 | 65,2 | -677 572 | -560 551 |
| 018 | LU Luxembourg | 96 702 | 47 336 | -51,0 | 0,1 | 53 764 | 53 144 | -1,2 | 0,1 | 112,3 | -42 938 | 5 808 |
| 030 | SE Sweden | 519 788 | 582 977 | 12,2 | 1,0 | 367 921 | 371 261 | 0,9 | 1,0 | 63,7 | -151 867 | -211 715 |
| 032 | FI Finland | 380 393 | 156 640 | -58,8 | 0,3 | 135 227 | 240 685 | 78,0 | 0,7 | 153,7 | -245 166 | 84 045 |
| 038 | AT Austria | 410 121 | 292 074 | -28,8 | 0,5 | 183 003 | 204 233 | 11,6 | 0,6 | 69,9 | -227 118 | -87 841 |
| 046 | MT Malta | 13 234 | 22 456 | 69,7 | 0,0 | 11 664 | 17 183 | 47,3 | 0,0 | 76,5 | -1 570 | -5 273 |
| 053 | EE Estonia | 10 480 | 9 865 | -5,9 | 0,0 | 12 403 | 15 016 | 21,1 | 0,0 | 152,2 | 1 923 | 5 151 |
| 054 | LV Latvia | 4 731 | 3 491 | -26,2 | 0,0 | 7 059 | 9 316 | 32,0 | 0,0 | 266,9 | 2 328 | 5 825 |
| 055 | LT Lithuania | 42 146 | 26 523 | -37,1 | 0,0 | 10 817 | 19 739 | 82,5 | 0,1 | 74,4 | -31 329 | -6 784 |
| 060 | PL Poland | 323 134 | 353 099 | 9,3 | 0,6 | 270 321 | 319 511 | 18,2 | 0,9 | 90,5 | -52 813 | -33 589 |
| 061 | CZ Czech Republic | 276 716 | 356 263 | 28,7 | 0,6 | 207 546 | 242 886 | 17,0 | 0,7 | 68,2 | -69 170 | -113 377 |
| 063 | SK Slovakia | 103 534 | 107 575 | 3,9 | 0,2 | 52 065 | 74 020 | 42,2 | 0,2 | 68,8 | -51 469 | -33 555 |
| 064 | HU Hungary | 235 838 | 266 259 | 12,9 | 0,5 | 93 252 | 104 116 | 11,7 | 0,3 | 39,1 | -142 586 | -162 143 |
| 066 | RO Romania | 141 614 | 111 099 | -21,5 | 0,2 | 176 252 | 201 825 | 14,5 | 0,5 | 181,7 | 34 639 | 90 726 |
| 068 | BG Bulgaria | 35 787 | 26 237 | -26,7 | 0,0 | 16 516 | 63 165 | 282,5 | 0,2 | 240,8 | -19 271 | 36 929 |
| 091 | SI Slovenia | 31 528 | 35 197 | 11,6 | 0,1 | 15 279 | 22 107 | 44,7 | 0,1 | 62,8 | -16 250 | -13 090 |
| 600 | CY Cyprus | 1 841 | 1 447 | -21,4 | 0,0 | 34 757 | 48 882 | 40,6 | 0,1 | 3377,0 | 32 916 | 47 434 |
| | OTHERS | 6 | 101 | 1521,9 | 0,0 | 209 576 | 341 279 | 62,8 | 0,9 | 338560,8 | 209 570 | 341 179 |
| | EXTRA EU(27) | 11 002 509 | 13 848 483 | 25,9 | 24,4 | 7804366 | 9206381 | 18,0 | 25,0 | 66,5 | -3 198 143 | -4 642 102 |
| | of which: | | | | | | | | | | | |
| | 1-EUROPE | 1 911 894 | 1 808 521 | -5,4 | 3,2 | 823537,4 | 1081560 | 31,3 | 2,9 | 59,8 | -1 088 357 | -726 962 |
| | EFTA | 938 588 | 913 770 | -2,6 | 1,6 | 376 531 | 420 161 | 11,6 | 1,1 | 46,0 | -562 057 | -493 609 |
| 024 | IS Iceland | 17 738 | 13 654 | -23,0 | 0,0 | 3 282 | 3 756 | 14,5 | 0,0 | 27,5 | -14 456 | -9 898 |
| 028 | NO Norway | 587 216 | 529 486 | -9,8 | 0,9 | 84 033 | 82 639 | -1,7 | 0,2 | 15,6 | -503 183 | -446 847 |
| 039 | CH Switzerland | 329 393 | 370 233 | 12,4 | 0,7 | 289 087 | 333 652 | 15,4 | 0,9 | 90,1 | -40 306 | -36 581 |
| | OTHER COUNTRIES | 973 306 | 894 751 | -8,1 | 1,6 | 447 007 | 661 398 | 48,0 | 1,8 | 73,9 | -526 299 | -233 353 |
| 052 | TR Turkey | 283 751 | 321 445 | 13,3 | 0,6 | 202 363 | 267 608 | 32,2 | 0,7 | 83,3 | -81 388 | -53 837 |
| 075 | RU Russian Federation | 528 598 | 413 387 | -21,8 | 0,7 | 95 703 | 120 217 | 25,6 | 0,3 | 29,1 | -432 895 | -293 170 |
| 092 | HR Croatia | 7 990 | 5 763 | -27,9 | 0,0 | 13 017 | 12 493 | -4,0 | 0,0 | 216,8 | 5 027 | 6 730 |
| | 2-AFRICA | 2 870 260 | 3 886 525 | 35,4 | 6,8 | 3530378 | 3564700 | 1,0 | 9,7 | 91,7 | 660 118 | -321 825 |
| | MAGHREB | 352 507 | 490 789 | 39,2 | 0,9 | 529 544 | 665 257 | 25,6 | 1,8 | 135,5 | 177 037 | 174 468 |
| 204 | MA Morocco | 58 469 | 109 690 | 87,6 | 0,2 | 215 357 | 304 932 | 41,6 | 0,8 | 278,0 | 156 888 | 195 242 |
| 208 | DZ Algeria | 274 938 | 269 391 | -2,0 | 0,5 | 197 445 | 216 674 | 9,7 | 0,6 | 80,4 | -77 493 | -52 717 |
| 212 | TN Tunisia | 19 100 | 111 709 | 484,9 | 0,2 | 116 742 | 143 652 | 23,1 | 0,4 | 128,6 | 97 643 | 31 943 |
| | ACPOL^[3] | 202 985 | 600 796 | 196,0 | 1,1 | 2 655 052 | 2 411 888 | -9,2 | 6,6 | 401,4 | 2 452 068 | 1 811 093 |
| 247 | CV Cape Verde | 7 241 | 7 476 | 3,2 | 0,0 | 222 707 | 264 157 | 18,6 | 0,7 | 3533,4 | 215 466 | 256 681 |
| 257 | GW Guinea-Bissau | 1 376 | 389 | -71,7 | 0,0 | 33 466 | 42 756 | 27,8 | 0,1 | 10988,4 | 32 090 | 42 367 |
| 311 | ST Sao Tome and Principe | 479 | 295 | -38,5 | 0,0 | 35 547 | 42 728 | 20,2 | 0,1 | 14497,6 | 35 068 | 42 433 |
| 330 | AO Angola | 151 089 | 563 452 | 272,9 | 1,0 | 2 242 450 | 1 911 241 | -14,8 | 5,2 | 339,2 | 2 091 361 | 1 347 789 |
| 366 | MZ Mozambique | 42 800 | 29 184 | -31,8 | 0,1 | 120 883 | 151 006 | 24,9 | 0,4 | 517,4 | 78 083 | 121 822 |
| | OTHER COUNTRIES | 2 314 768 | 2 794 940 | 20,7 | 4,9 | 345 782 | 487 555 | 41,0 | 1,3 | 17,4 | -1 968 986 | -2 307 385 |
| 216 | LY Libyan Arab Jamahiriya | 332 899 | 737 820 | 121,6 | 1,3 | 35 526 | 41 790 | 17,6 | 0,1 | 5,7 | -297 373 | -696 030 |
| 220 | EG Egypt | 54 484 | 75 509 | 38,6 | 0,1 | 58 710 | 78 175 | 33,2 | 0,2 | 103,5 | 4 225 | 2 665 |
| 272 | CI Côte d'Ivoire | 11 527 | 20 019 | 73,7 | 0,0 | 10 739 | 24 673 | 129,7 | 0,1 | 123,2 | - 787 | 4 654 |
| 288 | NG Nigeria | 1 242 871 | 1 377 419 | 10,8 | 2,4 | 33 284 | 44 951 | 35,1 | 0,1 | 3,3 | -1 209 587 | -1 332 468 |
| 388 | ZA South Africa | 182 596 | 141 177 | -22,7 | 0,2 | 53 184 | 74 632 | 40,3 | 0,2 | 52,9 | -129 412 | -66 545 |

(continues)

Period of assessment: January to December

| Geographic/ Economic Areas | | IMPORTS (Cif) [1] | | | | EXPORTS (Fob) [2] | | | | Coverage | Trade Balance (fob-cif) | |
|----------------------------|------------------------------|-------------------|------------------|------------------|----------------|-------------------|------------------|------------------|----------------|----------------|-------------------------|-------------------|
| Main Countries | | 2009 | 2010 | Rate of Change % | Struct. 2010 % | 2009 | 2010 | Rate of Change % | Struct. 2010 % | (fob/cif) 2010 | 2009 | 2010 |
| Cod | | | | | | | | | | | | |
| 3-AMERICA | | 2 580 968 | 3 066 759 | 18,8 | 5,4 | 1 976 363 | 2 796 610 | 41,5 | 7,6 | 91,2 | -604 605 | -270 149 |
| NAFTA | | 1 033 786 | 1 245 857 | 20,5 | 2,2 | 1 353 334 | 1 917 346 | 41,7 | 5,2 | 153,9 | 319 548 | 671 489 |
| 400 | US United States | 864 390 | 843 343 | -2,4 | 1,5 | 1 012 141 | 1 333 325 | 31,7 | 3,6 | 158,1 | 147 751 | 489 982 |
| 404 | CA Canada | 114 920 | 226 352 | 97,0 | 0,4 | 137 555 | 178 399 | 29,7 | 0,5 | 78,8 | 22 635 | -47 954 |
| 412 | MX Mexico | 54 475 | 176 162 | 223,4 | 0,3 | 203 638 | 405 623 | 99,2 | 1,1 | 230,3 | 149 163 | 229 461 |
| MERCOSUL | | 1 027 936 | 1 266 900 | 23,2 | 2,2 | 329 022 | 500 855 | 52,2 | 1,4 | 39,5 | -698 914 | -766 044 |
| 508 | BR Brazil | 887 528 | 1 046 727 | 17,9 | 1,8 | 294 500 | 440 817 | 49,7 | 1,2 | 42,1 | -593 028 | -605 910 |
| 528 | AR Argentina | 124 968 | 93 290 | -25,3 | 0,2 | 30 064 | 52 014 | 73,0 | 0,1 | 55,8 | -94 904 | -41 276 |
| OTHER COUNTRIES | | 519 247 | 554 002 | 6,7 | 1,0 | 294 008 | 378 408 | 28,7 | 1,0 | 68,3 | -225 239 | -175 593 |
| 424 | HN Honduras | 7 436 | 3 771 | -49,3 | 0,0 | 1 251 | 1 941 | 55,1 | 0,0 | 51,5 | -6 184 | -1 830 |
| 436 | CR Costa Rica | 49 954 | 53 804 | 7,7 | 0,1 | 8 793 | 9 002 | 2,4 | 0,0 | 16,7 | -41 161 | -44 802 |
| 448 | CU Cuba | 19 370 | 17 062 | -11,9 | 0,0 | 11 205 | 17 633 | 57,4 | 0,0 | 103,3 | -8 166 | 571 |
| 480 | CO Colombia | 103 217 | 100 508 | -2,6 | 0,2 | 6 586 | 13 313 | 102,1 | 0,0 | 13,2 | -96 632 | -87 195 |
| 484 | VE Venezuela | 122 868 | 147 043 | 19,7 | 0,3 | 123 306 | 160 125 | 29,9 | 0,4 | 108,9 | 438 | 13 082 |
| 500 | EC Ecuador | 24 268 | 21 906 | -9,7 | 0,0 | 4 992 | 7 636 | 53,0 | 0,0 | 34,9 | -19 277 | -14 270 |
| 512 | CL Chile | 35 719 | 80 647 | 125,8 | 0,1 | 45 313 | 92 233 | 103,5 | 0,3 | 114,4 | 9 595 | 11 586 |
| 4-ASIA | | 3 594 217 | 5 021 932 | 39,7 | 8,8 | 976 133 | 1 144 694 | 17,3 | 3,1 | 22,8 | -2 618 083 | -3 877 238 |
| MIDDLE EAST | | 901 385 | 1 081 184 | 19,9 | 1,9 | 317 038 | 383 722 | 21,0 | 1,0 | 35,5 | -584 346 | -697 462 |
| 612 | IQ Iraq | 158 020 | 51 | -100,0 | 0,0 | 713 | 1 211 | 70,0 | 0,0 | 2359,3 | -157 307 | 1 160 |
| 616 | IR Iran, Islamic Republic of | 154 924 | 108 821 | -29,8 | 0,2 | 35 962 | 37 481 | 4,2 | 0,1 | 34,4 | -118 962 | -71 341 |
| 624 | IL Israel | 84 160 | 84 816 | 0,8 | 0,1 | 59 613 | 69 311 | 16,3 | 0,2 | 81,7 | -24 548 | -15 505 |
| 632 | SA Saudi Arabia | 405 708 | 527 409 | 30,0 | 0,9 | 65 685 | 72 829 | 10,9 | 0,2 | 13,8 | -340 023 | -454 580 |
| 647 | AE United Arab Emirates | 17 914 | 22 664 | 26,5 | 0,0 | 62 236 | 75 409 | 21,2 | 0,2 | 332,7 | 44 321 | 52 745 |
| ASEAN | | 351 389 | 393 708 | 12,0 | 0,7 | 140 687 | 101 746 | -27,7 | 0,3 | 25,8 | -210 702 | -291 962 |
| 680 | TH Thailand | 101 275 | 113 078 | 11,7 | 0,2 | 15 058 | 13 286 | -11,8 | 0,0 | 11,7 | -86 217 | -99 792 |
| 700 | ID Indonesia | 78 913 | 63 885 | -19,0 | 0,1 | 5 748 | 10 047 | 74,8 | 0,0 | 15,7 | -73 165 | -53 838 |
| 701 | MY Malaysia | 90 487 | 103 358 | 14,2 | 0,2 | 23 902 | 10 548 | -55,9 | 0,0 | 10,2 | -66 585 | -92 809 |
| 706 | SG Singapore | 18 738 | 31 037 | 65,6 | 0,1 | 83 897 | 52 968 | -36,9 | 0,1 | 170,7 | 65 158 | 21 930 |
| 708 | PH Philippines | 10 613 | 16 318 | 53,7 | 0,0 | 2 490 | 3 515 | 41,2 | 0,0 | 21,5 | -8 123 | -12 803 |
| OTHER COUNTRIES | | 2 341 443 | 3 547 040 | 51,5 | 6,2 | 518 408 | 659 226 | 27,2 | 1,8 | 18,6 | -1 823 035 | -2 887 814 |
| 626 | TL Timor-Leste | 911 | 1 119 | 22,9 | 0,0 | 9 229 | 6 677 | -27,7 | 0,0 | 596,6 | 8 318 | 5 558 |
| 662 | PK Pakistan | 81 863 | 80 172 | -2,1 | 0,1 | 13 856 | 12 511 | -9,7 | 0,0 | 15,6 | -68 007 | -67 662 |
| 664 | IN India | 267 910 | 411 182 | 53,5 | 0,7 | 41 278 | 61 401 | 48,7 | 0,2 | 14,9 | -226 631 | -349 781 |
| 720 | CN China, People's Republic | 1 114 669 | 1 576 299 | 41,4 | 2,8 | 221 818 | 235 405 | 6,1 | 0,6 | 14,9 | -892 850 | -1 340 894 |
| 728 | KR Korea, Republic of | 278 368 | 247 256 | -11,2 | 0,4 | 38 028 | 47 171 | 24,0 | 0,1 | 19,1 | -240 340 | -200 084 |
| 732 | JP Japan | 285 072 | 362 767 | 27,3 | 0,6 | 86 486 | 128 405 | 48,5 | 0,3 | 35,4 | -198 585 | -234 362 |
| 736 | TW Taiwan | 88 067 | 145 558 | 65,3 | 0,3 | 14 592 | 26 885 | 84,3 | 0,1 | 18,5 | -73 475 | -118 673 |
| 740 | HK Hong Kong | 29 113 | 34 196 | 17,5 | 0,1 | 74 625 | 113 877 | 52,6 | 0,3 | 333,0 | 45 512 | 79 682 |
| 743 | MO Macao | 350 | 481 | 37,5 | 0,0 | 12 079 | 13 598 | 12,6 | 0,0 | 2827,3 | 11 730 | 13 117 |
| 5-AUSTR,OC,REG P. | | 33 673 | 31 167 | -7,4 | 0,1 | 53 621 | 83 883 | 56,4 | 0,2 | 269,1 | 19 948 | 52 716 |
| 800 | AU Australia | 14 662 | 12 252 | -16,4 | 0,0 | 44 990 | 68 701 | 52,7 | 0,2 | 560,7 | 30 327 | 56 449 |
| 804 | NZ New Zealand | 18 340 | 18 382 | 0,2 | 0,0 | 6 743 | 7 588 | 12,5 | 0,0 | 41,3 | -11 596 | -10 795 |
| 6-OTHERS | | 11 497 | 33 578 | 192,1 | 0,1 | 444 333 | 534 933 | 20,4 | 1,5 | 1593,1 | 432 836 | 501 355 |
| 952 | QS Stores and provisions | 0 | 0 | 0,0 | 0,0 | 350 360 | 454 531 | 29,7 | 1,2 | 0,0 | 350 360 | 454 531 |
| 960 | QW Countries and territories | 11 497 | 33 578 | 192,1 | 0,1 | 93 807 | 80 387 | -14,3 | 0,2 | 239,4 | 82 310 | 46 809 |

Memo:

| | | | | | | | | | | | |
|---------------------------|------------|------------|------|------|------------|------------|------|------|-------|-------------|-------------|
| Intra EU-15 | 39 144 794 | 41 614 605 | 6,3 | 73,3 | 23 055 859 | 26 424 362 | 14,6 | 71,9 | 63,5 | -16 088 936 | -15 190 243 |
| Intra-enlargement | 1 220 583 | 1 319 513 | 8,1 | 2,3 | 907 931 | 1 137 766 | 25,3 | 3,1 | 86,2 | -312 652 | -181 746 |
| OECD (excl. EU) | 2 848 326 | 3 121 332 | 9,6 | 5,5 | 2 108 346 | 2 856 867 | 35,5 | 7,8 | 91,5 | -739 980 | -264 465 |
| OPEC | 2 974 913 | 3 881 674 | 30,5 | 6,8 | 2 826 452 | 2 617 886 | -7,4 | 7,1 | 67,4 | -148 460 | -1 263 788 |
| ACP [4] | 2 281 163 | 2 691 146 | 18,0 | 4,7 | 2 981 979 | 2 842 732 | -4,7 | 7,7 | 105,6 | 700 815 | 151 585 |
| CPLP [5] | 1 091 424 | 1 648 641 | 51,1 | 2,9 | 2 958 781 | 2 859 382 | -3,4 | 7,8 | 173,4 | 1 867 358 | 1 210 740 |
| CIS [6] | 798 315 | 1 445 025 | 81,0 | 2,5 | 126 083 | 157 982 | 25,3 | 0,4 | 10,9 | -672 232 | -1 287 043 |
| Mashrak | 86 863 | 84 993 | -2,2 | 0,1 | 119 731 | 153 845 | 28,5 | 0,4 | 181,0 | 32 868 | 68 851 |
| EUROMED | 807 281 | 982 043 | 21,6 | 1,7 | 911 251 | 1 156 021 | 26,9 | 3,1 | 117,7 | 103 969 | 173 978 |
| Latin American Count. | 1 472 158 | 1 904 546 | 29,4 | 3,4 | 763 558 | 1 252 816 | 64,1 | 3,4 | 65,8 | -708 600 | -651 730 |
| Cent. Amer. Common Market | 68 300 | 65 627 | -3,9 | 0,1 | 22 556 | 27 011 | 19,8 | 0,1 | 41,2 | -45 745 | -38 616 |
| Andean Community | 265 102 | 296 705 | 11,9 | 0,5 | 142 922 | 199 461 | 39,6 | 0,5 | 67,2 | -122 180 | -97 244 |
| ASEM (relac. Euro-Asia) | 2 379 270 | 3 071 385 | 29,1 | 5,4 | 542 172 | 586 666 | 8,2 | 1,6 | 19,1 | -1 837 098 | -2 484 720 |
| EDA (Econ Dinam Asian) | 606 047 | 674 482 | 11,3 | 1,2 | 250 102 | 264 735 | 5,9 | 0,7 | 39,3 | -355 946 | -409 747 |
| H. Kong+China+Macao | 1 144 131 | 1 610 976 | 40,8 | 2,8 | 308 523 | 362 880 | 17,6 | 1,0 | 22,5 | -835 608 | -1 248 096 |

Source: GEE, based on data on International Trade statistics from Statistics Portugal (new data series for 1993-2009; provisional version for 2009 and preliminary for 2010). Estimates for operators under assimilation threshold and non-responses are included in Intra-EU trade.

Notes:

- [1] Sum of Arrivals from EU and Imports from third countries.
- [2] Sum of Dispatches to EU and Exports to third countries.
- [3] African Countries of Portuguese Official Language
- [4] African, Caribbean and Pacific Group of States
- [5] Community of Portuguese Language Countries
- [6] Commonwealth of Independent States

**Table 17 - International Trade of Portuguese goods
by geographical and economic areas (Intra + Extra-EU)
Imports [1] - Contributions of the main partners to the global growth rate**

| Period of assessment: January to December | | | | | | | |
|---|-------------------|-------|-------------------|---------------|---------------|---------------|-------------------|
| Countries and Regions | 1000 Euros | | | Structure (%) | | 2010/2009 | |
| | 2009 | Rank. | 2010 | 2009 | 2010 | y.o.y., % | Contrib. p.p. [3] |
| | | | | | | | |
| WORLD | 51 367 886 | | 56 782 601 | 100,00 | 100,00 | 10,54 | 10,54 |
| INTRA EU(27) | 40 365 378 | | 42 934 118 | 78,58 | 75,61 | 6,36 | 5,00 |
| 011 ES Spain | 16 764 743 | 1 | 17 685 210 | 32,64 | 31,15 | 5,49 | 1,79 |
| 004 DE Germany | 6 813 091 | 2 | 7 886 527 | 13,26 | 13,89 | 15,76 | 2,09 |
| 001 FR France | 4 288 227 | 3 | 4 101 087 | 8,35 | 7,22 | -4,36 | -0,36 |
| 005 IT Italy | 2 979 271 | 4 | 3 231 851 | 5,80 | 5,69 | 8,48 | 0,49 |
| 003 NL Netherlands | 2 812 231 | 5 | 2 928 279 | 5,47 | 5,16 | 4,13 | 0,23 |
| 006 GB United Kingdom | 1 696 816 | 6 | 2 130 343 | 3,30 | 3,75 | 25,55 | 0,84 |
| 017 BE Belgium | 1 455 370 | 7 | 1 612 085 | 2,83 | 2,84 | 10,77 | 0,31 |
| 030 SE Sweden | 519 788 | 14 | 582 977 | 1,01 | 1,03 | 12,16 | 0,12 |
| 007 IE Ireland | 515 522 | 15 | 538 257 | 1,00 | 0,95 | 4,41 | 0,04 |
| 038 AT Austria | 410 121 | 16 | 292 074 | 0,80 | 0,51 | -28,78 | -0,23 |
| 032 FI Finland | 380 393 | 18 | 156 640 | 0,74 | 0,28 | -58,82 | -0,44 |
| 060 PL Poland | 323 134 | 21 | 353 099 | 0,63 | 0,62 | 9,27 | 0,06 |
| 008 DK Denmark | 307 893 | 22 | 314 062 | 0,60 | 0,55 | 2,00 | 0,01 |
| 061 CZ Czech Republic | 276 716 | 26 | 356 263 | 0,54 | 0,63 | 28,75 | 0,15 |
| 064 HU Hungary | 235 838 | 29 | 266 259 | 0,46 | 0,47 | 12,90 | 0,06 |
| 066 RO Romania | 141 614 | 36 | 111 099 | 0,28 | 0,20 | -21,55 | -0,06 |
| 009 GR Greece | 104 619 | 40 | 107 775 | 0,20 | 0,19 | 3,02 | 0,01 |
| 063 SK Slovakia | 103 534 | 41 | 107 575 | 0,20 | 0,19 | 3,90 | 0,01 |
| 018 LU Luxembourg | 96 702 | 44 | 47 336 | 0,19 | 0,08 | -51,05 | -0,10 |
| 055 LT Lithuania | 42 146 | 60 | 26 523 | 0,08 | 0,05 | -37,07 | -0,03 |
| 068 BG Bulgaria | 35 787 | 61 | 26 237 | 0,07 | 0,05 | -26,69 | -0,02 |
| 091 SI Slovenia | 31 528 | 64 | 35 197 | 0,06 | 0,06 | 11,64 | 0,01 |
| 046 MT Malta | 13 234 | 90 | 22 456 | 0,03 | 0,04 | 69,68 | 0,02 |
| 053 EE Estonia | 10 480 | 96 | 9 865 | 0,02 | 0,02 | -5,87 | 0,00 |
| 054 LV Latvia | 4 731 | 107 | 3 491 | 0,01 | 0,01 | -26,21 | 0,00 |
| 600 CY Cyprus | 1 841 | 118 | 1 447 | 0,00 | 0,00 | -21,38 | 0,00 |
| OTHERS | 6 | | 101 | 0,00 | 0,00 | 1522 | 0,00 |
| EXTRA EU(27) | 11 002 509 | | 13 848 483 | 21,42 | 24,39 | 25,87 | 5,54 |
| of which: | | | | | | | |
| 1-EUROPE | 1 911 894 | | 1 808 521 | 3,72 | 3,18 | -5,41 | -0,20 |
| EFTA | 938 588 | | 913 770 | 1,83 | 1,61 | -2,64 | -0,05 |
| 028 NO Norway | 587 216 | 12 | 529 486 | 1,14 | 0,93 | -9,83 | -0,11 |
| 039 CH Switzerland | 329 393 | 20 | 370 233 | 0,64 | 0,65 | 12,40 | 0,08 |
| 024 IS Iceland | 17 738 | 81 | 13 654 | 0,03 | 0,02 | -23,02 | -0,01 |
| OTHER COUNTRIES | 973 306 | | 894 751 | 1,89 | 1,58 | -8,07 | -0,15 |
| 075 RU Russian Federation | 528 598 | 13 | 413 387 | 1,03 | 0,73 | -21,80 | -0,22 |
| 052 TR Turkey | 283 751 | 24 | 321 445 | 0,55 | 0,57 | 13,28 | 0,07 |
| 072 UA Ukraine | 60 926 | 52 | 118 105 | 0,12 | 0,21 | 93,85 | 0,11 |
| 098 XS Serbia | 54 698 | 54 | 6 031 | 0,11 | 0,01 | -88,97 | -0,09 |
| 2-AFRICA | 2 870 260 | | 3 886 525 | 5,59 | 6,84 | 35,41 | 1,98 |
| MAGHREB | 352 507 | | 490 789 | 0,69 | 0,86 | 39,23 | 0,27 |
| 208 DZ Algeria | 274 938 | 27 | 269 391 | 0,54 | 0,47 | -2,02 | -0,01 |
| 204 MA Morocco | 58 469 | 53 | 109 690 | 0,11 | 0,19 | 87,60 | 0,10 |
| 212 TN Tunisia | 19 100 | 75 | 111 709 | 0,04 | 0,20 | 484,87 | 0,18 |
| ACPOL [4] | 202 985 | | 600 796 | 0,40 | 1,06 | 195,98 | 0,77 |
| 330 AO Angola | 151 089 | 35 | 563 452 | 0,29 | 0,99 | 272,93 | 0,80 |
| 366 MZ Mozambique | 42 800 | 59 | 29 184 | 0,08 | 0,05 | -31,81 | -0,03 |
| 247 CV Cape Verde | 7 241 | 104 | 7 476 | 0,01 | 0,01 | 3,24 | 0,00 |
| 257 GW Guinea-Bissau | 1 376 | 121 | 389 | 0,00 | 0,00 | -71,72 | 0,00 |
| 311 ST Sao Tome and Principe | 479 | 136 | 295 | 0,00 | 0,00 | -38,45 | 0,00 |
| OTHER COUNTRIES | 2 314 768 | | 2 794 940 | 4,51 | 4,92 | 20,74 | 0,93 |
| 288 NG Nigeria | 1 242 871 | 8 | 1 377 419 | 2,42 | 2,43 | 10,83 | 0,26 |
| 216 LY Libyan Arab Jamahiriya | 332 899 | 19 | 737 820 | 0,65 | 1,30 | 121,63 | 0,79 |
| 388 ZA South Africa | 182 596 | 30 | 141 177 | 0,36 | 0,25 | -22,68 | -0,08 |
| 310 GQ Equatorial Guinea | 159 054 | 32 | 178 319 | 0,31 | 0,31 | 12,11 | 0,04 |
| 302 CM Cameroon | 83 340 | 49 | 65 306 | 0,16 | 0,12 | -21,64 | -0,04 |
| 3-AMERICA | 2 580 968 | | 3 066 759 | 5,02 | 5,40 | 18,82 | 0,95 |
| NAFTA | 1 033 786 | | 1 245 857 | 2,01 | 2,19 | 20,51 | 0,41 |
| 400 US United States | 864 390 | 11 | 843 343 | 1,68 | 1,49 | -2,43 | -0,04 |
| 404 CA Canada | 114 920 | 39 | 226 352 | 0,22 | 0,40 | 96,96 | 0,22 |
| 412 MX Mexico | 54 475 | 56 | 176 162 | 0,11 | 0,31 | 223,38 | 0,24 |

(continues)

Period of assessment: January to December

| Countries and Regions | 1000 Euros | | | Structure (%) | | 2010/2009 | |
|----------------------------------|------------------|-------|------------------|---------------|-------------|---------------|------------------------------|
| | 2009 | Rank. | 2010 | 2009 | 2010 | y.o.y., % | Contrib. p.p. ^[3] |
| | | | | | | | |
| MERCOSUL | 1 027 936 | | 1 266 900 | 2,00 | 2,23 | 23,25 | 0,47 |
| 508 BR Brazil | 887 528 | 10 | 1 046 727 | 1,73 | 1,84 | 17,94 | 0,31 |
| 528 AR Argentina | 124 968 | 37 | 93 290 | 0,24 | 0,16 | -25,35 | -0,06 |
| OTHER COUNTRIES | 519 247 | | 554 002 | 1,01 | 0,98 | 6,69 | 0,07 |
| 484 VE Venezuela | 122 868 | 38 | 147 043 | 0,24 | 0,26 | 19,68 | 0,05 |
| 480 CO Colombia | 103 217 | 42 | 100 508 | 0,20 | 0,18 | -2,62 | -0,01 |
| 472 TT Trinidad and Tobago | 94 397 | 45 | 34 269 | 0,18 | 0,06 | -63,70 | -0,12 |
| 436 CR Costa Rica | 49 954 | 58 | 53 804 | 0,10 | 0,09 | 7,71 | 0,01 |
| 512 CL Chile | 35 719 | 62 | 80 647 | 0,07 | 0,14 | 125,78 | 0,09 |
| 500 EC Ecuador | 24 268 | 69 | 21 906 | 0,05 | 0,04 | -9,73 | 0,00 |
| 4-ASIA | 3 594 217 | | 5 021 932 | 7,00 | 8,84 | 39,72 | 2,78 |
| MIDDLE EAST | 901 385 | | 1 081 184 | 1,75 | 1,90 | 19,95 | 0,35 |
| 632 SA Saudi Arabia | 405 708 | 17 | 527 409 | 0,79 | 0,93 | 30,00 | 0,24 |
| 612 IQ Iraq | 158 020 | 33 | 51 | 0,31 | 0,00 | -99,97 | -0,31 |
| 616 IR Iran, Islamic Republic of | 154 924 | 34 | 108 821 | 0,30 | 0,19 | -29,76 | -0,09 |
| 624 IL Israel | 84 160 | 48 | 84 816 | 0,16 | 0,15 | 0,78 | 0,00 |
| 608 SY Syrian Arab Republic | 31 706 | 63 | 7 946 | 0,06 | 0,01 | -74,94 | -0,05 |
| 078 AZ Azerbaijan | 24 533 | 68 | 251 778 | 0,05 | 0,44 | 926,30 | 0,44 |
| 647 AE United Arab Emirates | 17 914 | 80 | 22 664 | 0,03 | 0,04 | 26,52 | 0,01 |
| ASEAN | 351 389 | | 393 708 | 0,68 | 0,69 | 12,04 | 0,08 |
| 680 TH Thailand | 101 275 | 43 | 113 078 | 0,20 | 0,20 | 11,65 | 0,02 |
| 701 MY Malaysia | 90 487 | 46 | 103 358 | 0,18 | 0,18 | 14,22 | 0,03 |
| 700 ID Indonesia | 78 913 | 51 | 63 885 | 0,15 | 0,11 | -19,04 | -0,03 |
| 690 VN Viet-Nam | 49 999 | 57 | 63 970 | 0,10 | 0,11 | 27,94 | 0,03 |
| 706 SG Singapore | 18 738 | 77 | 31 037 | 0,04 | 0,05 | 65,64 | 0,02 |
| OTHER COUNTRIES | 2 341 443 | | 3 547 040 | 4,56 | 6,25 | 51,49 | 2,35 |
| 720 CN China, People's Republic | 1 114 669 | 9 | 1 576 299 | 2,17 | 2,78 | 41,41 | 0,90 |
| 732 JP Japan | 285 072 | 23 | 362 767 | 0,55 | 0,64 | 27,25 | 0,15 |
| 728 KR Korea, Republic of | 278 368 | 25 | 247 256 | 0,54 | 0,44 | -11,18 | -0,06 |
| 664 IN India | 267 910 | 28 | 411 182 | 0,52 | 0,72 | 53,48 | 0,28 |
| 079 KZ Kazakhstan | 159 726 | 31 | 640 251 | 0,31 | 1,13 | 300,84 | 0,94 |
| 736 TW Taiwan | 88 067 | 47 | 145 558 | 0,17 | 0,26 | 65,28 | 0,11 |
| 662 PK Pakistan | 81 863 | 50 | 80 172 | 0,16 | 0,14 | -2,06 | 0,00 |
| 740 HK Hong Kong | 29 113 | 65 | 34 196 | 0,06 | 0,06 | 17,46 | 0,01 |
| 666 BD Bangladesh | 20 949 | 73 | 24 904 | 0,04 | 0,04 | 18,88 | 0,01 |
| 081 UZ Uzbekistan | 9 459 | 100 | 15 542 | 0,02 | 0,03 | 64,31 | 0,01 |
| 5-AUSTR,OC,REG P. | 33 673 | | 31 167 | 0,07 | 0,05 | -7,44 | 0,00 |
| 804 NZ New Zealand | 18 340 | 79 | 18 382 | 0,04 | 0,03 | 0,23 | 0,00 |
| 800 AU Australia | 14 662 | 84 | 12 252 | 0,03 | 0,02 | -16,44 | 0,00 |
| 801 PG Papua New Guinea | 546 | 135 | 452 | 0,00 | 0,00 | -17,18 | 0,00 |
| 6-OTHERS | 11 497 | | 33 578 | 0,02 | 0,06 | 192,06 | 0,04 |
| 960 QW Countries and territories | 11 497 | | 33 578 | 0,02 | 0,06 | 192,06 | 0,04 |
| 952 QS Stores and provisions | 0 | | 0 | 0,00 | 0,00 | 0,00 | 0,00 |

Memo:

| | | | | | | |
|---------------------------|------------|------------|-------|-------|-------|-------|
| Intra EU-15 | 39 144 794 | 41 614 605 | 76,20 | 73,29 | 6,31 | 4,81 |
| Intra-enlargement | 1 220 583 | 1 319 513 | 2,38 | 2,32 | 8,11 | 0,19 |
| OECD (excl. EU) | 2 848 326 | 3 121 332 | 5,54 | 5,50 | 9,58 | 0,53 |
| OPEC | 2 974 913 | 3 881 674 | 5,79 | 6,84 | 30,48 | 1,77 |
| ACP ^[5] | 2 281 163 | 2 691 146 | 4,44 | 4,74 | 17,97 | 0,80 |
| CPLP ^[6] | 1 091 424 | 1 648 641 | 2,12 | 2,90 | 51,05 | 1,08 |
| CIS ^[7] | 798 315 | 1 445 025 | 1,55 | 2,54 | 81,01 | 1,26 |
| Mashrak | 86 863 | 84 993 | 0,17 | 0,15 | -2,15 | 0,00 |
| EUROMED | 807 281 | 982 043 | 1,57 | 1,73 | 21,65 | 0,34 |
| Latin American Count. | 1 472 158 | 1 904 546 | 2,87 | 3,35 | 29,37 | 0,84 |
| Cent. Amer. Common Market | 68 300 | 65 627 | 0,13 | 0,12 | -3,91 | -0,01 |
| Andean Community | 265 102 | 296 705 | 0,52 | 0,52 | 11,92 | 0,06 |
| ASEM (relac. Euro-Asia) | 2 379 270 | 3 071 385 | 4,63 | 5,41 | 29,09 | 1,35 |
| EDA (Econ Dinam Asian) | 606 047 | 674 482 | 1,18 | 1,19 | 11,29 | 0,13 |
| H. Kong+China+Macau | 1 144 131 | 1 610 976 | 2,23 | 2,84 | 40,80 | 0,91 |

Source: GEE, based on data on International Trade statistics from Statistics Portugal (new data series for 1993-2009; provisional version for 2009 and preliminary for 2010). Estimates for operators under assimilation threshold and non-responses are included in Intra-EU trade.

Notes:

[1] Sum of Arrivals from EU and Imports from third countries.

 [2] $(\text{Jan 09-Dec 10}) / (\text{Jan 08-Dec 09}) \times 100 - 100$

 [3] Contributions to growth, shift share analysis: $(\text{rate of change}) \times (\text{weight in the previous period}) \div 100$.

[4] African Countries of Portuguese Official Language

[5] African, Caribbean and Pacific Group of States

[6] Community of Portuguese Language Countries

[7] Commonwealth of Independent States

**Table 18 - International Trade of Portuguese goods
by geographical and economic areas (Intra + Extra-EU)
Exports ^[1] - Contributions of the main partners to the global growth rate**

| Period of assessment: January to December | | | | | | | |
|---|-------------------|-------|-------------------|--------------------|---------------|--------------|-------------------|
| Countries and Regions | 1000 Euros | | | Share on Total (%) | | 2010/2009 | |
| | 2009 | Rank. | 2010 | 2009 | 2010 | y.o.y., % | Contrib. p.p. [3] |
| WORLD | 31 768 156 | | 36 768 509 | 100,00 | 100,00 | 15,74 | 15,74 |
| INTRA EU(27) | 23 963 790 | | 27 562 128 | 75,43 | 74,96 | 15,02 | 11,33 |
| 011 ES Spain | 8 652 918 | 1 | 9 786 636 | 27,24 | 26,62 | 13,10 | 3,57 |
| 004 DE Germany | 4 099 667 | 2 | 4 771 584 | 12,90 | 12,98 | 16,39 | 2,12 |
| 001 FR France | 3 940 828 | 3 | 4 332 395 | 12,40 | 11,78 | 9,94 | 1,23 |
| 006 GB United Kingdom | 1 821 117 | 5 | 2 015 502 | 5,73 | 5,48 | 10,67 | 0,61 |
| 005 IT Italy | 1 193 789 | 6 | 1 383 121 | 3,76 | 3,76 | 15,86 | 0,60 |
| 003 NL Netherlands | 1 147 102 | 7 | 1 400 821 | 3,61 | 3,81 | 22,12 | 0,80 |
| 017 BE Belgium | 777 798 | 9 | 1 051 534 | 2,45 | 2,86 | 35,19 | 0,86 |
| 030 SE Sweden | 367 921 | 10 | 371 261 | 1,16 | 1,01 | 0,91 | 0,01 |
| 060 PL Poland | 270 321 | 13 | 319 511 | 0,85 | 0,87 | 18,20 | 0,15 |
| 008 DK Denmark | 241 731 | 14 | 258 422 | 0,76 | 0,70 | 6,90 | 0,05 |
| 061 CZ Czech Republic | 207 546 | 18 | 242 886 | 0,65 | 0,66 | 17,03 | 0,11 |
| 038 AT Austria | 183 003 | 22 | 204 233 | 0,58 | 0,56 | 11,60 | 0,07 |
| 066 RO Romania | 176 252 | 23 | 201 825 | 0,55 | 0,55 | 14,51 | 0,08 |
| 032 FI Finland | 135 227 | 25 | 240 685 | 0,43 | 0,65 | 77,99 | 0,33 |
| 007 IE Ireland | 119 837 | 28 | 105 802 | 0,38 | 0,29 | -11,71 | -0,04 |
| 009 GR Greece | 111 579 | 30 | 107 943 | 0,35 | 0,29 | -3,26 | -0,01 |
| 064 HU Hungary | 93 252 | 32 | 104 116 | 0,29 | 0,28 | 11,65 | 0,03 |
| 018 LU Luxembourg | 53 764 | 42 | 53 144 | 0,17 | 0,14 | -1,15 | 0,00 |
| 063 SK Slovakia | 52 065 | 44 | 74 020 | 0,16 | 0,20 | 42,17 | 0,07 |
| 600 CY Cyprus | 34 757 | 53 | 48 882 | 0,11 | 0,13 | 40,64 | 0,04 |
| 068 BG Bulgaria | 16 516 | 64 | 63 165 | 0,05 | 0,17 | 282,45 | 0,15 |
| 091 SI Slovenia | 15 279 | 65 | 22 107 | 0,05 | 0,06 | 44,69 | 0,02 |
| 053 EE Estonia | 12 403 | 71 | 15 016 | 0,04 | 0,04 | 21,07 | 0,01 |
| 046 MT Malta | 11 664 | 74 | 17 183 | 0,04 | 0,05 | 47,31 | 0,02 |
| 055 LT Lithuania | 10 817 | 78 | 19 739 | 0,03 | 0,05 | 82,48 | 0,03 |
| 054 LV Latvia | 7 059 | 88 | 9 316 | 0,02 | 0,03 | 31,97 | 0,01 |
| OTHERS | 209 576 | | 341 279 | 0,66 | 0,93 | 62,84 | 0,41 |
| EXTRA EU(27) | 7 804 366 | | 9 206 381 | 24,57 | 25,04 | 17,96 | 4,41 |
| of which: | | | | | | | |
| 1-EUROPE | 823 537 | | 1 081 560 | 2,59 | 2,94 | 31,33 | 0,81 |
| EFTA | 376 531 | | 420 161 | 1,19 | 1,14 | 11,59 | 0,14 |
| 039 CH Switzerland | 289 087 | 12 | 333 652 | 0,91 | 0,91 | 15,42 | 0,14 |
| 028 NO Norway | 84 033 | 35 | 82 639 | 0,26 | 0,22 | -1,66 | 0,00 |
| OTHER COUNTRIES | 447 007 | | 661 398 | 1,41 | 1,80 | 47,96 | 0,67 |
| 052 TR Turkey | 202 363 | 20 | 267 608 | 0,64 | 0,73 | 32,24 | 0,21 |
| 075 RU Russian Federation | 95 703 | 31 | 120 217 | 0,30 | 0,33 | 25,61 | 0,08 |
| 044 GI Gibraltar | 85 654 | 34 | 206 218 | 0,27 | 0,56 | 140,76 | 0,38 |
| 072 UA Ukraine | 19 763 | 61 | 21 653 | 0,06 | 0,06 | 9,57 | 0,01 |
| 092 HR Croatia | 13 017 | 70 | 12 493 | 0,04 | 0,03 | -4,03 | 0,00 |
| 2-AFRICA | 3 530 378 | | 3 564 700 | 11,11 | 9,69 | 0,97 | 0,11 |
| MAGHREB | 529 544 | | 665 257 | 1,67 | 1,81 | 25,63 | 0,43 |
| 204 MA Morocco | 215 357 | 17 | 304 932 | 0,68 | 0,83 | 41,59 | 0,28 |
| 208 DZ Algeria | 197 445 | 21 | 216 674 | 0,62 | 0,59 | 9,74 | 0,06 |
| 212 TN Tunisia | 116 742 | 29 | 143 652 | 0,37 | 0,39 | 23,05 | 0,08 |
| ACPOL [4] | 2 655 052 | | 2 411 888 | 8,36 | 6,56 | -9,16 | -0,77 |
| 330 AO Angola | 2 242 450 | 4 | 1 911 241 | 7,06 | 5,20 | -14,77 | -1,04 |
| 247 CV Cape Verde | 222 707 | 15 | 264 157 | 0,70 | 0,72 | 18,61 | 0,13 |
| 366 MZ Mozambique | 120 883 | 27 | 151 006 | 0,38 | 0,41 | 24,92 | 0,09 |
| 311 ST Sao Tome and Principe | 35 547 | 51 | 42 728 | 0,11 | 0,12 | 20,20 | 0,02 |
| 257 GW Guinea-Bissau | 33 466 | 54 | 42 756 | 0,11 | 0,12 | 27,76 | 0,03 |
| OTHER COUNTRIES | 345 782 | | 487 555 | 1,09 | 1,33 | 41,00 | 0,45 |
| 220 EG Egypt | 58 710 | 41 | 78 175 | 0,18 | 0,21 | 33,16 | 0,06 |
| 388 ZA South Africa | 53 184 | 43 | 74 632 | 0,17 | 0,20 | 40,33 | 0,07 |
| 216 LY Libyan Arab Jamahiriya | 35 526 | 52 | 41 790 | 0,11 | 0,11 | 17,63 | 0,02 |
| 288 NG Nigeria | 33 284 | 55 | 44 951 | 0,10 | 0,12 | 35,05 | 0,04 |
| 3-AMERICA | 1 976 363 | | 2 796 610 | 6,22 | 7,61 | 41,50 | 2,58 |
| NAFTA | 1 353 334 | | 1 917 346 | 4,26 | 5,21 | 41,68 | 1,78 |
| 400 US United States | 1 012 141 | 8 | 1 333 325 | 3,19 | 3,63 | 31,73 | 1,01 |
| 412 MX Mexico | 203 638 | 19 | 405 623 | 0,64 | 1,10 | 99,19 | 0,64 |
| 404 CA Canada | 137 555 | 24 | 178 399 | 0,43 | 0,49 | 29,69 | 0,13 |

(continues)

Period of assessment: January to December

| Countries and Regions | 1000 Euros | | | Share on Total (%) | | 2010/2009 | |
|------------------------------------|----------------|-------|------------------|--------------------|-------------|---------------|------------------------------|
| | 2009 | Rank. | 2010 | 2009 | 2010 | y.o.y., % | Contrib. p.p. ^[3] |
| MERCOSUL | 329 022 | | 500 855 | 1,04 | 1,36 | 52,23 | 0,54 |
| 508 BR Brazil | 294 500 | 11 | 440 817 | 0,93 | 1,20 | 49,68 | 0,46 |
| 528 AR Argentina | 30 064 | 57 | 52 014 | 0,09 | 0,14 | 73,01 | 0,07 |
| OTHER COUNTRIES | 294 008 | | 378 408 | 0,93 | 1,03 | 28,71 | 0,27 |
| 484 VE Venezuela | 123 306 | 26 | 160 125 | 0,39 | 0,44 | 29,86 | 0,12 |
| 512 CL Chile | 45 313 | 45 | 92 233 | 0,14 | 0,25 | 103,54 | 0,15 |
| 459 AG Antigua and Barbuda | 44 372 | 47 | 22 048 | 0,14 | 0,06 | -50,31 | -0,07 |
| 4-ASIA | 976 133 | | 1 144 694 | 3,07 | 3,11 | 17,27 | 0,53 |
| MIDDLE EAST | 317 038 | | 383 722 | 1,00 | 1,04 | 21,03 | 0,21 |
| 632 SA Saudi Arabia | 65 685 | 38 | 72 829 | 0,21 | 0,20 | 10,88 | 0,02 |
| 647 AE United Arab Emirates | 62 236 | 39 | 75 409 | 0,20 | 0,21 | 21,17 | 0,04 |
| 624 IL Israel | 59 613 | 40 | 69 311 | 0,19 | 0,19 | 16,27 | 0,03 |
| 616 IR Iran, Islamic Republic of | 35 962 | 50 | 37 481 | 0,11 | 0,10 | 4,22 | 0,00 |
| 628 JO Jordan | 23 410 | 59 | 24 895 | 0,07 | 0,07 | 6,35 | 0,00 |
| ASEAN | 140 687 | | 101 746 | 0,44 | 0,28 | -27,68 | -0,12 |
| 706 SG Singapore | 83 897 | 36 | 52 968 | 0,26 | 0,14 | -36,87 | -0,10 |
| 701 MY Malaysia | 23 902 | 58 | 10 548 | 0,08 | 0,03 | -55,87 | -0,04 |
| 680 TH Thailand | 15 058 | 66 | 13 286 | 0,05 | 0,04 | -11,77 | -0,01 |
| 690 VN Viet-Nam | 9 243 | 81 | 11 105 | 0,03 | 0,03 | 20,15 | 0,01 |
| OTHER COUNTRIES | 518 408 | | 659 226 | 1,63 | 1,79 | 27,16 | 0,44 |
| 720 CN China, People's Republic of | 221 818 | 16 | 235 405 | 0,70 | 0,64 | 6,13 | 0,04 |
| 732 JP Japan | 86 486 | 33 | 128 405 | 0,27 | 0,35 | 48,47 | 0,13 |
| 740 HK Hong Kong | 74 625 | 37 | 113 877 | 0,23 | 0,31 | 52,60 | 0,12 |
| 664 IN India | 41 278 | 48 | 61 401 | 0,13 | 0,17 | 48,75 | 0,06 |
| 728 KR Korea, Republic of | 38 028 | 49 | 47 171 | 0,12 | 0,13 | 24,04 | 0,03 |
| 736 TW Taiwan | 14 592 | 67 | 26 885 | 0,05 | 0,07 | 84,25 | 0,04 |
| 662 PK Pakistan | 13 856 | 69 | 12 511 | 0,04 | 0,03 | -9,71 | 0,00 |
| 5-AUSTR,OC,REG P. | 53 621 | | 83 883 | 0,17 | 0,23 | 56,44 | 0,10 |
| 800 AU Australia | 44 990 | 46 | 68 701 | 0,14 | 0,19 | 52,70 | 0,07 |
| 804 NZ New Zealand | 6 743 | 89 | 7 588 | 0,02 | 0,02 | 12,52 | 0,00 |
| 6-OTHERS | 444 333 | | 534 933 | 1,40 | 1,45 | 20,39 | 0,29 |
| 952 QS Stores and provisions | 350 360 | | 454 531 | 1,10 | 1,24 | 29,73 | 0,33 |
| 960 QW Countries and territories | 93 807 | | 80 387 | 0,30 | 0,22 | -14,31 | -0,04 |

Memo:

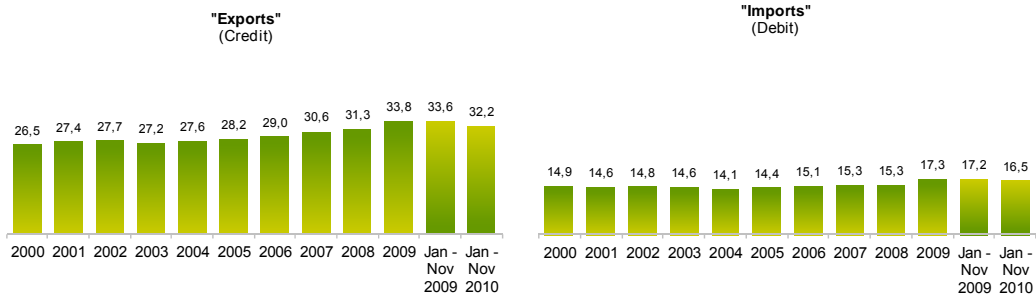
| | | | | | | |
|---------------------------|------------|------------|-------|-------|-------|-------|
| Intra EU-15 | 23 055 859 | 26 424 362 | 72,58 | 71,87 | 14,61 | 10,60 |
| Intra-enlargement | 907 931 | 1 137 766 | 2,86 | 3,09 | 25,31 | 0,72 |
| OECD (excl. EU) | 2 108 346 | 2 856 867 | 6,64 | 7,77 | 35,50 | 2,36 |
| OPEC | 2 826 452 | 2 617 886 | 8,90 | 7,12 | -7,38 | -0,66 |
| ACP ^[5] | 2 981 979 | 2 842 732 | 9,39 | 7,73 | -4,67 | -0,44 |
| CPLP ^[6] | 2 958 781 | 2 859 382 | 9,31 | 7,78 | -3,36 | -0,31 |
| CIS ^[7] | 126 083 | 157 982 | 0,40 | 0,43 | 25,30 | 0,10 |
| Mashrak | 119 731 | 153 845 | 0,38 | 0,42 | 28,49 | 0,11 |
| EUROMED | 911 251 | 1 156 021 | 2,87 | 3,14 | 26,86 | 0,77 |
| Latin American Count. | 763 558 | 1 252 816 | 2,40 | 3,41 | 64,08 | 1,54 |
| Cent. Amer. Common Market | 22 556 | 27 011 | 0,07 | 0,07 | 19,75 | 0,01 |
| Andean Community | 142 922 | 199 461 | 0,45 | 0,54 | 39,56 | 0,18 |
| ASEM (relac. Euro-Asia) | 542 172 | 586 666 | 1,71 | 1,60 | 8,21 | 0,14 |
| EDA (Econ Dinam Asian) | 250 102 | 264 735 | 0,79 | 0,72 | 5,85 | 0,05 |
| H. Kong+China+Macau | 308 523 | 362 880 | 0,97 | 0,99 | 17,62 | 0,17 |

Source: GEE, based on data on International Trade statistics from Statistics Portugal (new data series for 1993-2009; provisional version for 2009 and preliminary for 2010). Estimates for operators under assimilation threshold and non-responses are included in Intra-EU trade.

Notes:

- [1]Sum of Dispatches to EU and Exports to third countries.
- [2] $(\text{Oct 09} - \text{Dec 09 09-Jan 10}) / (\text{Oct 09} - \text{Dec 09 08-Jan 09}) \times 100 - 100$
- [3]Contributions to growth, shift share analysis: $(\text{rate of change}) \times (\text{weight in the previous period}) \div 100$.
- [4]African Countries of Portuguese Official Language
- [5]African, Caribbean and Pacific Group of States
- [6]Community of Portuguese Language Countries
- [7]Commonwealth of Independent States

Chart 5 – Share of Services in total Trade



Source: GEE, based on data from the Balance of Payments Statistics of the Bank of Portugal.

Notes:

[1] The "Exports" from the Balance of Payments (Credit) corresponds to the Exports in International Trade Statistics (sum of "Exports" of goods to the EU with the "Exports" to Third Countries).

[2] The "Imports" from the Balance of Payments (Debit) corresponds to the Imports in International Trade Statistics (sum of the "Imports" of goods from the EU with the "Imports" from Third Countries).

Table 19 - Trade of Goods and Services as a percentage of GDP

| | 2006 | 2007 | 2008 | 2009 | 2007 | | | | 2008 | | | | 2009 | | | | 2010 | | |
|--|-------------|-------------|-------------|--------------|-------------|-------------|-------------|-------------|-------------|-------------|-------------|-------------|--------------|--------------|-------------|-------------|-------------|-------------|-------------|
| | | | | | Q1 | Q2 | Q3 | Q4 | Q1 | Q2 | Q3 | Q4 | Q1 | Q2 | Q3 | Q4 | Q1 | Q2 | Q3 |
| Current Values as a percentage of GDP | | | | | | | | | | | | | | | | | | | |
| Exports (Fob) | 31,0 | 32,3 | 32,5 | 28,0 | 32,0 | 32,2 | 32,5 | 32,5 | 33,5 | 33,1 | 33,3 | 29,9 | 26,9 | 27,3 | 28,9 | 28,8 | 29,0 | 30,5 | 32,0 |
| - Goods | 23,5 | 23,9 | 23,8 | 20,0 | 23,9 | 24,0 | 24,0 | 23,8 | 24,6 | 24,5 | 24,8 | 21,4 | 18,9 | 19,4 | 21,1 | 20,8 | 21,0 | 22,0 | 23,4 |
| - Services | 7,5 | 8,4 | 8,6 | 7,9 | 8,1 | 8,3 | 8,5 | 8,6 | 8,9 | 8,6 | 8,6 | 8,5 | 8,0 | 8,0 | 7,8 | 8,0 | 8,0 | 8,5 | 8,6 |
| Imports (Fob) | 39,7 | 40,3 | 42,5 | 35,6 | 38,8 | 40,0 | 40,9 | 41,6 | 42,7 | 43,2 | 44,3 | 39,9 | 34,9 | 34,5 | 37,1 | 36,1 | 36,1 | 39,0 | 38,0 |
| - Goods | 34,4 | 34,8 | 36,7 | 30,1 | 33,5 | 34,5 | 35,3 | 35,9 | 37,1 | 37,4 | 38,4 | 34,0 | 29,3 | 28,8 | 31,7 | 30,7 | 30,7 | 33,3 | 32,3 |
| - Services | 5,3 | 5,5 | 5,8 | 5,5 | 5,3 | 5,4 | 5,6 | 5,7 | 5,6 | 5,8 | 5,9 | 5,9 | 5,5 | 5,7 | 5,4 | 5,4 | 5,5 | 5,7 | 5,7 |
| Annual real growth rate | | | | | | | | | | | | | | | | | | | |
| Exports (Fob) | 11,6 | 7,6 | -0,3 | -11,7 | 10,2 | 8,0 | 6,9 | 5,4 | 4,9 | 2,6 | 0,7 | -9,1 | -19,1 | -15,4 | -9,7 | -1,5 | 8,7 | 9,1 | 9,2 |
| - Goods | 9,8 | 5,7 | -0,8 | -13,6 | 8,7 | 6,0 | 4,5 | 3,6 | 3,8 | 2,3 | 1,8 | -10,9 | -22,9 | -18,5 | -10,2 | -1,1 | 11,6 | 10,1 | 8,8 |
| - Services | 17,7 | 13,6 | 1,2 | -6,2 | 14,8 | 14,3 | 14,4 | 10,9 | 8,0 | 3,4 | -2,2 | -3,9 | -7,8 | -6,3 | -8,1 | -2,5 | 1,8 | 6,8 | 10,3 |
| Imports (Fob) | 7,2 | 5,5 | 2,8 | -10,6 | 3,2 | 5,5 | 5,9 | 7,4 | 7,4 | 4,4 | 3,8 | -4,0 | -15,5 | -14,5 | -8,5 | -3,7 | 5,5 | 9,8 | 1,5 |
| - Goods | 6,4 | 5,5 | 2,7 | -11,2 | 3,5 | 5,5 | 5,5 | 7,3 | 7,7 | 4,1 | 3,9 | -4,5 | -17,0 | -16,0 | -8,5 | -2,9 | 6,4 | 11,4 | 0,8 |
| - Services | 12,7 | 5,9 | 3,2 | -6,7 | 1,3 | 5,5 | 8,7 | 8,0 | 5,2 | 6,1 | 3,0 | -1,2 | -5,3 | -5,1 | -8,4 | -8,1 | 0,1 | 0,8 | 5,6 |

Source: GEE, based on data from the Quarterly National Accounts (base 2006) of Statistics Portugal. Includes Intra and Extracommunity trade.

Notes:

The "Exports" in National Accounts corresponds to the Exports in International Trade Statistics (sum of "Exports" of goods from the EU with the "Exports" from Third Countries).

Table 20 - Goods and Services (Credit) - Services components

| CREDIT ("Exports") | January to November | | Structure (%) | | | | Growth rates and contributions to growth ^[1] | | | | |
|-------------------------------------|---------------------|---------------|---------------|--------------|--------------|--------------|---|---------------|--------------|-------------|---------------|
| | | | Annual | | Jan-Nov | | 12 months ^[2] | | | Jan-Nov | |
| | 2009 | 2010 | 2004 | 2009 | 2009 | 2010 | y.o.y., % | contrib. p.p. | contrib. (%) | y.o.y., % | contrib. p.p. |
| Goods and Services | 44 281 | 49 728 | 100,0 | 100,0 | 100,0 | 100,0 | 11,4 | 11,4 | 100,0 | 12,3 | 12,3 |
| Goods | 29 393 | 33 707 | 72,4 | 66,2 | 66,4 | 67,8 | 13,8 | 9,1 | 79,9 | 14,7 | 9,7 |
| Services | 14 889 | 16 021 | 27,6 | 33,8 | 33,6 | 32,2 | 6,8 | 2,3 | 20,1 | 7,6 | 2,6 |
| Transportation | 3 798 | 4 213 | 5,3 | 8,6 | 8,6 | 8,5 | 8,5 | 0,7 | 6,5 | 10,9 | 0,9 |
| Travel | 6 422 | 7 068 | 14,5 | 14,4 | 14,5 | 14,2 | 9,5 | 1,4 | 11,9 | 10,1 | 1,5 |
| Communications services | 446 | 424 | 0,8 | 1,0 | 1,0 | 0,9 | -4,9 | -0,1 | -0,4 | -4,8 | 0,0 |
| Construction services | 465 | 446 | 0,8 | 1,1 | 1,0 | 0,9 | -6,1 | -0,1 | -0,6 | -4,0 | 0,0 |
| Insurance services | 97 | 86 | 0,3 | 0,2 | 0,2 | 0,2 | -9,3 | 0,0 | -0,2 | -11,2 | 0,0 |
| Financial services | 129 | 142 | 0,4 | 0,3 | 0,3 | 0,3 | 9,2 | 0,0 | 0,3 | 9,9 | 0,0 |
| Computer and information services | 241 | 246 | 0,3 | 0,5 | 0,5 | 0,5 | -0,9 | 0,0 | 0,0 | 1,9 | 0,0 |
| Royalties and license fees | 105 | 27 | 0,1 | 0,2 | 0,2 | 0,1 | -70,7 | -0,2 | -1,4 | -74,2 | -0,2 |
| Other business services | 2 832 | 2 945 | 4,4 | 6,7 | 6,4 | 5,9 | 4,8 | 0,3 | 2,8 | 4,0 | 0,3 |
| Personal, cult., and recreat. Serv. | 201 | 244 | 0,4 | 0,5 | 0,5 | 0,5 | 21,6 | 0,1 | 0,9 | 21,2 | 0,1 |
| Government services | 153 | 180 | 0,4 | 0,3 | 0,3 | 0,4 | 15,7 | 0,1 | 0,5 | 17,4 | 0,1 |

Source: GEE, based on data from the Balance of Payments Statistics of the Bank of Portugal.

Notes:

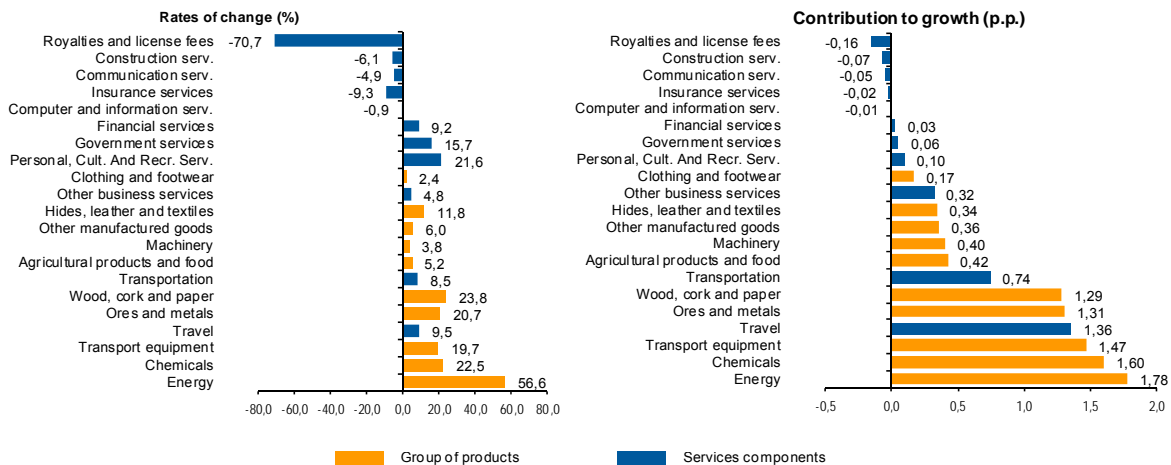
The "Exports" from the Balance of Payments (Credit) corresponds to the Exports in International Trade Statistics (sum of "Exports" of goods to the EU with the "Exports" to Third Countries).

[1] Contributions to the growth rate, shift share analysis: (rate of change) x (weight in the previous period) ÷ 100. Measures the proportion of growth of the "Export" attributable to each category specified.

[2] 12 months count up to November 2010

Chart 6 - Growth rates of "exports" of goods and services and contribution to growth

Previous 12 months ending in December 2010



Source: GEE, based on data from the Bank de Portugal for "Exports" of goods and services, and Statistics Portugal, for the structure of "exports" of goods. The distribution of the contribution of growth of "exports" of goods (data from the Balance of Payments, Bank of Portugal) by group of products follows the structure implicit in the database of International Trade Statistics Portugal for analogous Goods (sum of "Exports" of goods to the EU with the "Exports" to Third Countries).

Notes:

The "Exports" from the Balance of Payments (Credit) corresponds to the Exports in International Trade Statistics (sum of "Exports" of goods to the EU with the "Exports" to Third Countries).

[1] Contribution to growth, shift-share analysis: (rate of change) x (weight in the previous period) ÷ 100. The sum corresponds to the growth rate of Exports of Goods and Services over the past 12 months, according to statistics from the Balance of Payments Bank of Portugal.

Table 21 - Goods and Services (Credit) - Services components
Annual rate of change (2001-2010)

| CREDIT ("Exports") | Share in 2009 (%) | 2002 | 2003 | 2004 | 2005 | 2006 | 2007 | 2008 | 2009 | Jan-Nov 2010 |
|-------------------------------------|----------------------|------------|------------|------------|------------|-------------|-------------|------------|--------------|-----------------|
| Goods and Services | 100,0 | 2,7 | 2,1 | 6,3 | 1,5 | 16,4 | 9,9 | 2,8 | -15,5 | 12,3 |
| Goods | 66,2 | 2,2 | 2,8 | 5,7 | 0,7 | 15,1 | 7,5 | 1,8 | -18,6 | 14,7 |
| Services | 33,8 | 4,0 | 0,2 | 8,0 | 3,5 | 19,9 | 15,7 | 5,3 | -8,8 | 7,6 |
| Transportation | 8,6 | 9,7 | 9,2 | 9,1 | 11,4 | 41,7 | 18,9 | 10,4 | -12,6 | 10,9 |
| Travel | 14,4 | -0,5 | -4,0 | 5,9 | 0,1 | 7,6 | 10,9 | 0,5 | -7,0 | 10,1 |
| Communications services | 1,0 | 18,3 | 21,8 | 18,8 | 20,4 | 8,6 | 16,4 | 4,7 | -15,6 | -4,8 |
| Construction services | 1,1 | 1,4 | 25,8 | 27,4 | -15,7 | 45,9 | 40,9 | 8,3 | -21,9 | -4,0 |
| Insurance services | 0,2 | 17,8 | 4,9 | 32,9 | -26,5 | 14,2 | 5,9 | 5,1 | 3,3 | -11,2 |
| Financial services | 0,3 | 35,0 | -11,5 | 30,6 | -9,2 | 16,8 | 25,8 | -4,7 | -32,6 | 9,9 |
| Computer and information services | 0,5 | 20,8 | 18,0 | 20,6 | 4,5 | 41,6 | 36,8 | 15,3 | -2,5 | 1,9 |
| Royalties and license fees | 0,2 | 6,9 | 5,9 | -15,7 | 69,5 | 51,4 | 10,0 | -29,8 | 150,5 | -74,2 |
| Other business services | 6,7 | 12,2 | -1,1 | 4,3 | 8,9 | 27,0 | 19,5 | 10,2 | -6,6 | 4,0 |
| Personal, cult., and recreat. Serv. | 0,5 | -22,3 | -3,0 | 30,8 | 6,7 | 22,5 | -6,3 | 7,1 | 10,7 | 21,2 |
| Government services | 0,3 | 1,8 | 0,1 | 6,8 | -15,4 | 17,7 | 10,3 | 0,5 | -2,4 | 17,4 |

Source: GEE, based on data from the Balance of Payments Statistics of the Bank of Portugal for the Total Exports of Goods and Services.

Notes:

* The "Exports" from the Balance of Payments (Credit) corresponds to the Exports in International Trade Statistics (sum of "Exports" of goods to the EU with the "Exports" to Third Countries).

Table 22 - Goods and Services (Debit) - Services components

| DEBIT ("Imports") | January to November | | Structure (%) | | | | Growth rates and contributions to growth [1] | | | |
|-------------------------------------|---------------------------|---------------|---------------|--------------|--------------|--------------|--|------------------------------|------------|---------------|
| | | | Annual | | Jan-Nov | | 12 months ^[2] | | Jan-Nov | |
| | 2009 | 2010 | 2004 | 2009 | 2009 | 2010 | y.o.y., % | contrib. p.p. ^[1] | y.o.y., % | contrib. p.p. |
| | Goods and Services | 54 762 | 59 661 | 100,0 | 100,0 | 100,0 | 100,0 | 7,6 | 7,6 | 8,9 |
| Goods | 45 318 | 49 818 | 85,9 | 82,7 | 82,8 | 83,5 | 8,4 | 7,0 | 9,9 | 8,2 |
| Services | 9 444 | 9 843 | 14,1 | 17,3 | 17,2 | 16,5 | 3,5 | 0,6 | 4,2 | 0,7 |
| Transportation | 2 769 | 2 938 | 4,5 | 5,1 | 5,1 | 4,9 | 5,1 | 0,3 | 6,1 | 0,3 |
| Travel | 2 496 | 2 721 | 4,0 | 4,5 | 4,6 | 4,6 | 8,2 | 0,4 | 9,0 | 0,4 |
| Communications services | 416 | 395 | 0,5 | 0,7 | 0,8 | 0,7 | -6,6 | 0,0 | -5,1 | 0,0 |
| Construction services | 113 | 84 | 0,2 | 0,2 | 0,2 | 0,1 | -25,7 | -0,1 | -25,5 | -0,1 |
| Insurance services | 174 | 216 | 0,4 | 0,3 | 0,3 | 0,4 | 22,3 | 0,1 | 24,1 | 0,1 |
| Financial services | 164 | 209 | 0,3 | 0,3 | 0,3 | 0,4 | 16,8 | 0,1 | 27,2 | 0,1 |
| Computer and information services | 347 | 332 | 0,3 | 0,6 | 0,6 | 0,6 | -5,0 | 0,0 | -4,2 | 0,0 |
| Royalties and license fees | 325 | 362 | 0,5 | 0,6 | 0,6 | 0,6 | 10,9 | 0,1 | 11,1 | 0,1 |
| Other business services | 2 085 | 2 030 | 2,6 | 3,9 | 3,8 | 3,4 | -2,1 | -0,1 | -2,7 | -0,1 |
| Personal, cult., and recreat. Serv. | 442 | 449 | 0,5 | 0,8 | 0,8 | 0,8 | 1,6 | 0,0 | 1,4 | 0,0 |
| Government services | 112 | 108 | 0,3 | 0,2 | 0,2 | 0,2 | -6,4 | 0,0 | -3,4 | 0,0 |

Source: GEE, based on data from the Balance of Payments Statistics of the Bank of Portugal for the Total Exports of Goods and Services.

Notes:

* The "Imports" from the Balance of Payments (Debit) corresponds to the Imports in International Trade Statistics (sum of the "Imports" of goods from the EU with the "Imports" from Third Countries).

Fob values for "Imports" of goods.

[1] Contributions to growth, shift share analysis: (rate of change) x (weight in the previous period) ÷ 100. Measures the proportion of growth of "Imports" attributable to each category specified.

[2] 12 months count up to November 2010