

Statistical Compilations

Gabinete de Estratégia e Estudos

Ministério da Economia, da Inovação e do Desenvolvimento

Statistics of International Trade

Nº 05/2011

Includes baseline data from Statistics Portugal for the international trade of Portugal

■ january to march of 2011 - Intra + Extra-EU Trade

Contents

Global Evolution

| | |
|---|--------|
| 1. Recent Trade Balance | Pag. 3 |
| 2. Trade Balance with and without energy products | 4 |
| 3. Trade Balance – aggregate data (Intra+Extra) | 4 |
| 4. Monthly and quarterly evolution | 5 |

Exports of Goods

| | |
|--|----|
| 5. By Group of Products (Intra+Extra) | 6 |
| 6. By Group of Products (Extra) | 7 |
| 7. By Group of Products – growth rate and contribution to growth | 8 |
| 8. From selected markets (Intra+Extra) | 9 |
| 9. From selected markets (Extra) | 10 |
| 10. By destination market – structure (%) | 10 |
| 11. By destination market – growth rate and contribution to growth | 11 |

Imports of Goods

| | |
|---|----|
| 12. By Group of Products (Intra+Extra EU) | 12 |
| 13. By Group of Products (Extra EU) | 13 |
| 14. From a selection of markets (Intra+Extra) | 13 |
| 15. From a selection of markets (Extra) | 14 |

By geographical and economic areas

| | |
|---|----|
| 16. Main Countries (Intra and Extra) | 15 |
| 17. Imports: contribution to growth (Intra and Extra) | 17 |
| 18. Exports: contribution to growth (Intra and Extra) | 19 |

Goods and Services

| | |
|--|----|
| 19. Trade in goods and services as a percentage of GDP | 21 |
| 20. Goods and Services (credit) – Services components | 22 |
| 21. Goods and Services (credit) – growth rate | 23 |
| 22. Goods and Services (debit) – Services components | 23 |

Charts Index

| | |
|--|----|
| 1. Rate of coverage of the imports by the exports of goods | 2 |
| 2. Growth rate of exports by Group of Products and contribution to growth | 7 |
| 3. Growth rate of exports by markets and contribution to growth | 9 |
| 4. Growth rate of imports by markets and contribution to growth | 14 |
| 5. Share of services in total trade | 21 |
| 6. Growth rate of exports of goods and services and contribution to growth | 22 |

NOTE

In **June 2010**, Statistics Portugal announced a new data series on International Trade for the period 1993-2009. This new series resulted from a review process of its methodology, which reflected the need to obtain results with greater reliability and accuracy, and includes, in addition to various methodological changes, new information reported by companies.

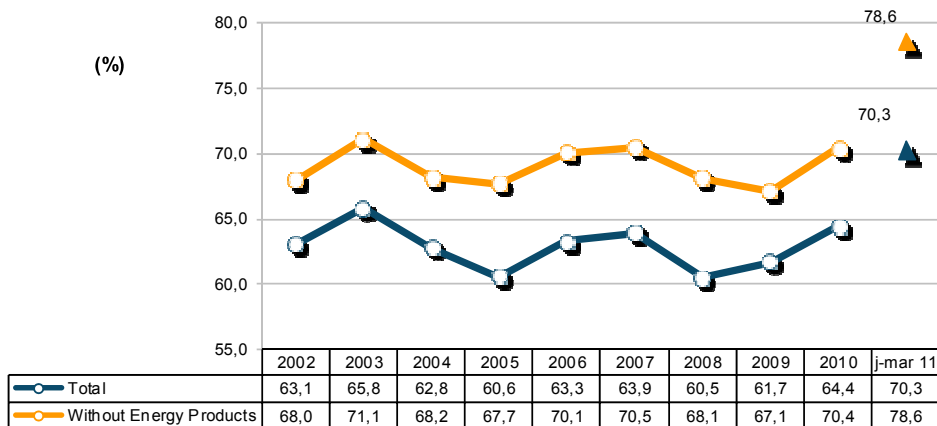
Since 1993, following the creation of the Single Market, the collection of information relating to international trade in goods is done by a new system supported by a compulsory survey (Intrastat declaration) for all operators, whose trade in goods with other Member States exceeds certain thresholds (assimilation threshold). Since 2005, and following the Community rules on quality control of the statistics on International Trade, a confrontation between regular information from the Intrastat system and data of an administrative nature was put in place, which included statements from Value Added Tax (VAT), as well as an analysis of the asymmetries with the statistics reported by other member countries. Following that, estimates for the total international trade, based on estimates for companies that are below the threshold of assimilation, as well as non-response of Intra-community trade started to be published.

The entry into force of “*Informação Empresarial Simplificada*” (IES) in 2007, contributed to ease the comparison of data on international trade with other sources, now made possible from 2006 onwards (reference period for the data). IES, along with information on the VAT constitutes an important source of information for the validity of the quality of the statistics on International Trade.

In **May 2011**, Statistics Portugal disseminated the definitive results concerning the year of 2009, in compliance with the Revision Policy of International trade, implemented in 2010. Also, the magnitude of an error detected on the data declared by an enterprise led Statistics Portugal to make an extraordinary revision on the data from 2007 and 2008 (Intra-EU Trade), which is reflected in this publication.

Global Evolution¹

Chart 1 – Progress of the coverage rate (fob/cif), % imports by exports of goods



Source: GEE, based on data on International Trade statistics from Statistics Portugal (new data series for 1993-2009; provisional version for 2010 and preliminary for 2011). Estimates for operators under the assimilation threshold and non-responses are included in Intra-EU trade.

¹ Database of international trade (Intra and Extra EU) released by Statistics Portugal (SP) for the month of January to March of 2011, corresponding to preliminary versions for both intra and extra community trade. The data for intratrade includes estimates for non-responses (value of transactions of companies for which SP has not yet received information), as well as periodic reporting of companies that are below the assimilation threshold (annual value of intra-Community below which operators are exempted from Intrastat statistical declaration, limited to delivery of the periodic tax declaration: in the case of Portugal, 200 thousand euros for arrivals and 250 thousand for dispatches in 2011). On the other hand, the current methodology considers, in addition to the regular comparison between the Intrastat declarations and Value Added Tax (VAT), the comparison with the data obtained from “*Informação Empresarial Simplificada*” (IES).

Table 1 – Recent evolution of the Portuguese Trade Balance (Goods)

Preliminary data version of january to march 2011

| Intra + Extra-EU | january to march | | | Last 3 months | | | Last 12 months | | |
|---------------------------------|------------------|--------|----------|-----------------|-----------------|----------|----------------|----------------|----------|
| | 2010 | 2011 | y.o.y. % | jan 10 - mar 10 | jan 11 - mar 11 | y.o.y. % | apr 09- mar 10 | apr 10- mar 11 | y.o.y. % |
| Millions of Euros | | | | | | | | | |
| Exports (fob) | 8 659 | 10 133 | 17,0 | 8 659 | 10 133 | 17,0 | 32 855 | 38 235 | 16,4 |
| Imports (cif) | 13 273 | 14 403 | 8,5 | 13 273 | 14 403 | 8,5 | 52 464 | 58 184 | 10,9 |
| Imports (fob) | 12 648 | 13 725 | 8,5 | 12 648 | 13 725 | 8,5 | 49 993 | 55 443 | 10,9 |
| Trade Balance (fob-cif) | -4 613 | -4 271 | -7,4 | -4 613 | -4 271 | -7,4 | -19 609 | -19 948 | 1,7 |
| Trade Balance (fob-fob) | -3 988 | -3 592 | -9,9 | -3 988 | -3 592 | -9,9 | -17 138 | -17 208 | 0,4 |
| Rate of Coverage (fob/cif), % | 65,2 | 70,3 | - | 65,2 | 70,3 | - | 62,6 | 65,7 | - |
| Rate of Coverage (fob/fob), % | 68,5 | 73,8 | - | 68,5 | 73,8 | - | 65,7 | 69,0 | - |
| Without Energy products: | | | | | | | | | |
| Exports (fob) | 7 978 | 9 586 | 20,2 | 7 978 | 9 586 | 20,2 | 30 860 | 35 905 | 16,3 |
| Imports (cif) | 11 379 | 12 194 | 7,2 | 11 379 | 12 194 | 7,2 | 45 532 | 49 540 | 8,8 |
| Imports (fob) | 10 843 | 11 619 | 7,2 | 10 843 | 11 619 | 7,2 | 43 387 | 47 207 | 8,8 |
| Trade Balance (fob-cif) | -3 401 | -2 608 | -23,3 | -3 401 | -2 608 | -23,3 | -14 672 | -13 636 | -7,1 |
| Trade Balance (fob-fob) | -2 865 | -2 033 | -29,0 | -2 865 | -2 033 | -29,0 | -12 527 | -11 302 | -9,8 |
| Rate of Coverage (fob/cif), % | 70,1 | 78,6 | - | 70,1 | 78,6 | - | 67,8 | 72,5 | - |
| Rate of Coverage (fob/fob), % | 73,6 | 82,5 | - | 73,6 | 82,5 | - | 71,1 | 76,1 | - |
| Millions US\$ | | | | | | | | | |
| Exports (fob) | 11 965 | 13 870 | 15,9 | | | | | | |
| Imports (cif) | 18 341 | 19 717 | 7,5 | | | | | | |
| Imports (fob) | 17 478 | 18 789 | 7,5 | | | | | | |
| Trade Balance (fob-cif) | -6 376 | -5 847 | -8,3 | | | | | | |
| Trade Balance (fob-fob) | -5 512 | -4 919 | -10,8 | | | | | | |

| Extra-EU | january to march | | | Last 3 months | | | Last 12 months | | |
|---------------------------------|------------------|--------|----------|-----------------|-----------------|----------|----------------|----------------|----------|
| | 2010 | 2011 | y.o.y. % | jan 10 - mar 10 | jan 11 - mar 11 | y.o.y. % | apr 09- mar 10 | apr 10- mar 11 | y.o.y. % |
| Millions of Euros | | | | | | | | | |
| Exports (fob) | 2 100 | 2 393 | 13,9 | 2 100 | 2 393 | 13,9 | 8 120 | 9 482 | 16,8 |
| Imports (cif) | 3 243 | 3 538 | 9,1 | 3 243 | 3 538 | 9,1 | 11 797 | 14 144 | 19,9 |
| Imports (fob) | 3 090 | 3 372 | 9,1 | 3 090 | 3 372 | 9,1 | 11 242 | 13 478 | 19,9 |
| Trade Balance (fob-cif) | -1 143 | -1 145 | 0,2 | -1 143 | -1 145 | 0,2 | -3 677 | -4 662 | 26,8 |
| Trade Balance (fob-fob) | - 990 | - 978 | -1,2 | - 990 | - 978 | -1,2 | -3 121 | -3 996 | 28,0 |
| Rate of Coverage (fob/cif), % | 64,8 | 67,6 | - | 64,8 | 67,6 | - | 68,8 | 67,0 | - |
| Rate of Coverage (fob/fob), % | 68,0 | 71,0 | - | 68,0 | 71,0 | - | 72,2 | 70,4 | - |
| Without Energy products: | | | | | | | | | |
| Exports (fob) | 1 717 | 2 124 | 23,7 | 1 717 | 2 124 | 23,7 | 6 982 | 8 176 | 17,1 |
| Imports (cif) | 1 778 | 1 982 | 11,5 | 1 778 | 1 982 | 11,5 | 6 438 | 7 714 | 19,8 |
| Imports (fob) | 1 694 | 1 889 | 11,5 | 1 694 | 1 889 | 11,5 | 6 134 | 7 351 | 19,8 |
| Trade Balance (fob-cif) | - 60 | 142 | -335,9 | - 60 | 142 | -335,9 | 545 | 461 | -15,3 |
| Trade Balance (fob-fob) | 23 | 236 | 903,2 | 23 | 236 | 903,2 | 848 | 825 | -2,7 |
| Rate of Coverage (fob/cif), % | 96,6 | 107,2 | - | 96,6 | 107,2 | - | 108,5 | 106,0 | - |
| Rate of Coverage (fob/fob), % | 101,4 | 112,5 | - | 101,4 | 112,5 | - | 113,8 | 111,2 | - |

Source: GEE, based on data on International Trade statistics from Statistics Portugal (new data series for 1993-2009; provisional version for 2010 and preliminary for 2011). Estimates for operators under the assimilation threshold and non-responses are included in Intra-EU trade.

Notes:

Sum of Dispatches to EU and Exports to third countries.

Sum of Arrivals from EU and Imports from third countries.

Conversion factor used cif-fob for 2008, 2009, 2010 and 2011: 0.9529

**Table 2 – Trade Balance (goods) of Portugal with and without Energy Products
(2006-2011)**

values in Millions of Euros

| | 2006 | 2007 | 2008 | 2009 | 2010 | jan-mar | |
|--------------------------------|--------|--------|--------|--------|--------|---------|--------|
| | | | | | | 2010 | 2011 |
| With Energy Products | | | | | | | |
| Exports (fob) | 35 640 | 38 294 | 38 847 | 31 697 | 36 762 | 8 659 | 10 133 |
| y.o.y., % | 14,5 | 7,4 | 1,4 | -18,4 | 16,0 | - | 17,0 |
| Imports (cif) | 56 295 | 59 927 | 64 194 | 51 379 | 57 053 | 13 273 | 14 403 |
| y.o.y., % | 9,6 | 6,5 | 7,1 | -20,0 | 11,0 | - | 8,5 |
| Rate of Coverage (fob/cif), % | 63,3 | 63,9 | 60,5 | 61,7 | 64,4 | 65,2 | 70,3 |
| Without Energy Products | | | | | | | |
| Exports (fob) | 33 753 | 36 568 | 36 688 | 30 151 | 34 297 | 7 978 | 9 586 |
| y.o.y., % | 13,0 | 8,3 | 0,3 | -17,8 | 13,7 | - | 20,2 |
| Imports (cif) | 48 175 | 51 870 | 53 884 | 44 912 | 48 726 | 11 379 | 12 194 |
| y.o.y., % | 9,2 | 7,7 | 3,9 | -16,7 | 8,5 | - | 7,2 |
| Rate of Coverage (fob/cif), % | 70,1 | 70,5 | 68,1 | 67,1 | 70,4 | 70,1 | 78,6 |

Memo:
Energy Products:

| | | | | | | | |
|---------------|-------|-------|--------|-------|-------|-------|-------|
| Exports (fob) | 1 888 | 1 726 | 2 159 | 1 545 | 2 465 | 681 | 546 |
| y.o.y., % | 49,0 | -8,6 | 25,1 | -28,4 | 59,5 | - | -19,8 |
| Imports (cif) | 8 120 | 8 056 | 10 310 | 6 467 | 8 327 | 1 894 | 2 210 |
| y.o.y., % | 11,8 | -0,8 | 28,0 | -37,3 | 28,8 | - | 16,7 |

Source: GEE, based on data on International Trade statistics from Statistics Portugal (new data series for 1993-2009; provisional version for 2010 and preliminary for 2011). Estimates for operators under the assimilation threshold and non-responses are included in Intra-EU trade.

**Table 3 – Trade Balance
Aggregated data (Intra + Extra EU)**

values in Millions of Euros

| january to march | 2010 | 2011 | y.o.y., % |
|-------------------------------|--------|--------|-----------|
| Intra + Extra EU | | | |
| Exports (fob) | 8 659 | 10 133 | 17,0 |
| Imports (cif) | 13 273 | 14 403 | 8,5 |
| Trade Balance (fob-cif) | -4 614 | -4 270 | -7,5 |
| Rate of coverage (fob/cif), % | 65,2 | 70,4 | - |
| Intra EU | | | |
| Exports (fob) | 6 559 | 7 739 | 18,0 |
| Imports (cif) | 10 030 | 10 865 | 8,3 |
| Trade Balance (fob-cif) | -3 471 | -3 126 | -9,9 |
| Rate of coverage (fob/cif), % | 65,4 | 71,2 | - |
| Extra EU | | | |
| Exports (fob) | 2 100 | 2 393 | 14,0 |
| Imports (cif) | 3 243 | 3 538 | 9,1 |
| Trade Balance (fob-cif) | -1 143 | -1 145 | 0,2 |
| Rate of coverage (fob/cif), % | 64,8 | 67,6 | - |

Source: GEE, based on data on International Trade statistics from Statistics Portugal (new data series for 1993-2009; provisional version for 2010 and preliminary for 2011). Estimates for operators under the assimilation threshold and non-responses are included in Intra-EU trade.

Table 4 – Monthly and quarterly evolution of Portuguese International Trade

Preliminary data version of january to march 2011

| values in Millions of Euros | | | | | | |
|-----------------------------|---------------|--------|-----------|---------------|--------|-----------|
| Intra+Extra EU-27 | IMPORTS (cif) | | | EXPORTS (fob) | | |
| | 2010 | 2011 | y.o.y., % | 2010 | 2011 | y.o.y., % |
| jan | 4 014 | 4 454 | 11,0 | 2 608 | 3 121 | 19,7 |
| feb | 4 230 | 4 616 | 9,1 | 2 719 | 3 295 | 21,2 |
| mar | 5 029 | 5 333 | 6,0 | 3 333 | 3 716 | 11,5 |
| apr | 4 485 | | | 2 962 | | |
| may | 4 679 | | | 3 048 | | |
| jun | 5 544 | | | 3 137 | | |
| jul | 4 645 | | | 3 402 | | |
| aug | 4 177 | | | 2 512 | | |
| sep | 4 884 | | | 3 314 | | |
| oct | 5 082 | | | 3 267 | | |
| nov | 5 095 | | | 3 327 | | |
| dec | 5 190 | | | 3 133 | | |
| Q1 | 13 273 | 14 403 | 8,5 | 8 659 | 10 133 | 17,0 |
| Q2 | 14 708 | | | 9 148 | | |
| Q3 | 13 706 | | | 9 228 | | |
| Q4 | 15 367 | | | 9 727 | | |

| Intra EU-27 | IMPORTS (cif) | | | EXPORTS (fob) | | |
|-------------|---------------|--------|-----------|---------------|-------|-----------|
| | 2010 | 2011 | y.o.y., % | 2010 | 2011 | y.o.y., % |
| jan | 3 040 | 3 360 | 10,5 | 2 028 | 2 417 | 19,2 |
| feb | 3 148 | 3 518 | 11,7 | 2 062 | 2 507 | 21,6 |
| mar | 3 841 | 3 987 | 3,8 | 2 469 | 2 815 | 14,0 |
| apr | 3 428 | | | 2 232 | | |
| may | 3 473 | | | 2 297 | | |
| jun | 4 099 | | | 2 368 | | |
| jul | 3 569 | | | 2 520 | | |
| aug | 2 940 | | | 1 799 | | |
| sep | 3 708 | | | 2 501 | | |
| oct | 3 815 | | | 2 459 | | |
| nov | 4 007 | | | 2 545 | | |
| dec | 4 136 | | | 2 293 | | |
| Q1 | 10 030 | 10 865 | 8,3 | 6 559 | 7 739 | 18,0 |
| Q2 | 11 000 | | | 6 898 | | |
| Q3 | 10 217 | | | 6 820 | | |
| Q4 | 11 958 | | | 7 297 | | |

| Extra EU-27 | IMPORTS (cif) | | | EXPORTS (fob) | | |
|-------------|---------------|-------|-----------|---------------|-------|-----------|
| | 2010 | 2011 | y.o.y., % | 2010 | 2011 | y.o.y., % |
| jan | 974 | 1 094 | 12,4 | 580 | 704 | 21,4 |
| feb | 1 082 | 1 099 | 1,5 | 657 | 788 | 20,1 |
| mar | 1 187 | 1 345 | 13,3 | 864 | 901 | 4,3 |
| apr | 1 057 | | | 730 | | |
| may | 1 206 | | | 751 | | |
| jun | 1 445 | | | 769 | | |
| jul | 1 076 | | | 883 | | |
| aug | 1 237 | | | 713 | | |
| sep | 1 175 | | | 812 | | |
| oct | 1 267 | | | 808 | | |
| nov | 1 088 | | | 782 | | |
| dec | 1 054 | | | 840 | | |
| Q1 | 3 243 | 3 538 | 9,1 | 2 100 | 2 393 | 13,9 |
| Q2 | 3 708 | | | 2 250 | | |
| Q3 | 3 488 | | | 2 408 | | |
| Q4 | 3 409 | | | 2 431 | | |

Source: GEE, based on data on International Trade statistics from Statistics Portugal (new data series for 1993-2009; provisional version for 2010 and preliminary for 2011). Estimates for operators under the assimilation threshold and non-responses are included in Intra-EU trade.

Exports* of Goods

Table 5 – Portuguese Exports (Intra + Extra EU) of Goods by Group of Products

Of which: products by Chapter (CN-2) above 30 million euros in 2011

| (Fob) | | (Intra + Extra-EU) | | | | | | | |
|--------------|--|--------------------|-----------------|---------------|--------------|---|---------------------------------|--------------|---------------------------------|
| | | Millions of Euros | | Structure (%) | | Growth rates and contributions to growth ^[1] | | | |
| | | | | | | Last 12 months | | jan-mar | |
| Grp/ CN-2 | Group of Products | jan-mar 2010 | jan-mar 2011 | 2010 | 2011 | y.o.y. % | Contrib. p.p. ^[1] | y.o.y. % | Contrib. p.p. ^[1] |
| | TOTAL EXPORTS | 8 659 | 10 133 | 100,0 | 100,0 | 16,4 | 16,4 | 17,0 | 17,0 |
| 000 | Agricultural products and food | 949 | 1 069 | 11,0 | 10,5 | 9,7 | 1,2 | 12,6 | 1,4 |
| 22 | Beverages, spirits and vinegar | 184 | 205 | 2,1 | 2,0 | 7,5 | 0,2 | 11,6 | 0,2 |
| 03 | Fish and crustaceans, molluscs and other aquatic invertebrates | 105 | 132 | 1,2 | 1,3 | 37,2 | 0,5 | 26,5 | 0,3 |
| 24 | Tobacco and manufactured tobacco substitutes | 99 | 105 | 1,1 | 1,0 | -2,7 | 0,0 | 6,4 | 0,1 |
| 15 | Animal/vegetable fats and oils and their cleavage products; prepared edible fats; animal/vegetable waxes | 65 | 78 | 0,8 | 0,8 | 17,9 | 0,1 | 19,6 | 0,1 |
| 04 | Dairy produce; birds eggs; natural honey; edible products of animal origin, nes. | 68 | 76 | 0,8 | 0,8 | 16,8 | 0,1 | 12,2 | 0,1 |
| 20 | Preparations of vegetables, fruit, nuts or other parts of plants | 67 | 76 | 0,8 | 0,7 | 8,1 | 0,1 | 12,2 | 0,1 |
| 16 | Preparations of meat, of fish or of crustaceans, molluscs or other aquatic invertebrates | 42 | 56 | 0,5 | 0,6 | 12,9 | 0,1 | 33,4 | 0,2 |
| 08 | Edible fruit and nuts; peel of citrus fruit or melons | 54 | 56 | 0,6 | 0,6 | 19,0 | 0,1 | 2,6 | 0,0 |
| 19 | Preparations of cereals, flour, starch or milk; pastrycooks products | 43 | 49 | 0,5 | 0,5 | 11,1 | 0,1 | 12,3 | 0,1 |
| 07 | Edible vegetables and certain roots and tubers | 34 | 40 | 0,4 | 0,4 | -6,6 | 0,0 | 16,2 | 0,1 |
| 17 | Sugars and sugar confectionery | 34 | 34 | 0,4 | 0,3 | -11,3 | -0,1 | -0,8 | 0,0 |
| 100 | Mineral fuels and oils | 681 | 546 | 7,9 | 5,4 | 16,8 | 1,0 | -19,8 | -1,6 |
| 27 | Mineral fuel/oils and products of their distillation; bituminous substances; mineral waxes | 681 | 546 | 7,9 | 5,4 | 16,8 | 1,0 | -19,8 | -1,6 |
| 200 | Chemicals | 1 005 | 1 335 | 11,6 | 13,2 | 25,4 | 2,9 | 32,9 | 3,8 |
| 39 | Plastics and articles thereof | 400 | 493 | 4,6 | 4,9 | 27,9 | 1,2 | 23,3 | 1,1 |
| 29 | Organic chemicals | 131 | 261 | 1,5 | 2,6 | 64,6 | 0,8 | 99,5 | 1,5 |
| 40 | Rubber and articles thereof | 178 | 215 | 2,1 | 2,1 | 19,4 | 0,4 | 20,7 | 0,4 |
| 30 | Pharmaceutical products | 114 | 128 | 1,3 | 1,3 | 2,1 | 0,0 | 11,5 | 0,2 |
| 38 | Miscellaneous chemical products | 34 | 70 | 0,4 | 0,7 | 16,9 | 0,1 | 104,2 | 0,4 |
| 32 | Tanning/dyeing extracts; tannins&derivatives; colouring matter; paints&varnishes; mastics; inks | 42 | 46 | 0,5 | 0,5 | 18,3 | 0,1 | 9,4 | 0,0 |
| 31 | Fertilisers | 20 | 31 | 0,2 | 0,3 | 136,2 | 0,2 | 55,8 | 0,1 |
| 300 | Wood, cork and paper | 772 | 886 | 8,9 | 8,7 | 24,5 | 2,1 | 14,8 | 1,3 |
| 48 | Paper and paperboard; articles of paper pulp, of paper or of paperboard | 354 | 390 | 4,1 | 3,8 | 33,3 | 1,2 | 10,0 | 0,4 |
| 45 | Cork and articles of cork | 191 | 205 | 2,2 | 2,0 | 7,4 | 0,2 | 7,3 | 0,2 |
| 44 | Wood and articles of wood; wood charcoal | 121 | 144 | 1,4 | 1,4 | 11,2 | 0,2 | 19,2 | 0,3 |
| 47 | Pulp of wood or of other fibrous cellulosic material; recovered (waste and scrap) paper or paperboard | 88 | 133 | 1,0 | 1,3 | 54,9 | 0,6 | 50,4 | 0,5 |
| 400 | Hides, leather and textiles | 376 | 455 | 4,3 | 4,5 | 17,1 | 0,8 | 21,2 | 0,9 |
| 63 | Other made-up textile articles; sets; worn clothing and worn textile articles; rags | 116 | 128 | 1,3 | 1,3 | 12,0 | 0,2 | 10,8 | 0,1 |
| 55 | Man-made staple fibres | 47 | 67 | 0,5 | 0,7 | 33,1 | 0,2 | 44,9 | 0,2 |
| 56 | Wadding, felt and nonwovens; special yarns; twine, cordage, ropes and cables and articles thereof | 40 | 52 | 0,5 | 0,5 | 18,6 | 0,1 | 32,5 | 0,1 |
| 52 | Cotton | 30 | 40 | 0,3 | 0,4 | 18,0 | 0,1 | 34,5 | 0,1 |
| 59 | Impregnated, coated, covered or laminated textile fabrics; textile artcls for industrial use | 32 | 36 | 0,4 | 0,4 | 15,6 | 0,1 | 10,0 | 0,0 |
| 60 | Knitted or crocheted fabrics | 25 | 31 | 0,3 | 0,3 | 15,6 | 0,0 | 24,8 | 0,1 |
| 500 | Clothing and footwear | 911 | 1 015 | 10,5 | 10,0 | 7,9 | 0,8 | 11,4 | 1,2 |
| 64 | Footwear, gaiters and the like; parts of such articles | 340 | 408 | 3,9 | 4,0 | 11,4 | 0,4 | 20,0 | 0,8 |
| 61 | Articles of apparel and clothing accessories, knitted or crocheted | 370 | 405 | 4,3 | 4,0 | 6,3 | 0,3 | 9,4 | 0,4 |
| 62 | Articles of apparel and clothing accessories, not knitted or crocheted | 194 | 192 | 2,2 | 1,9 | 4,4 | 0,1 | -1,0 | 0,0 |
| 600 | Ores and metals | 816 | 1 157 | 9,4 | 11,4 | 29,9 | 2,9 | 41,7 | 3,9 |
| 72 | Iron and steel | 170 | 334 | 2,0 | 3,3 | 59,3 | 1,2 | 96,3 | 1,9 |
| 73 | Articles of iron or steel | 220 | 240 | 2,5 | 2,4 | 6,5 | 0,2 | 9,1 | 0,2 |
| 76 | Aluminium and articles thereof | 127 | 139 | 1,5 | 1,4 | 8,1 | 0,1 | 9,2 | 0,1 |
| 26 | Ores, slag and ash | 51 | 129 | 0,6 | 1,3 | 66,8 | 0,6 | 154,5 | 0,9 |
| 71 | Natural/cultured pearls, precious stones, precious metals and articles thereof; imitation jewellery; coin | 47 | 93 | 0,5 | 0,9 | 108,1 | 0,5 | 98,9 | 0,5 |
| 83 | Miscellaneous articles of base metal | 55 | 63 | 0,6 | 0,6 | 11,8 | 0,1 | 14,2 | 0,1 |
| 25 | Salt; sulphur; earths and stone; plastering materials, lime and cement | 60 | 61 | 0,7 | 0,6 | 13,9 | 0,1 | 2,3 | 0,0 |
| 74 | Copper and articles thereof | 47 | 52 | 0,5 | 0,5 | 27,7 | 0,1 | 9,2 | 0,1 |
| 82 | Tools, implements, cutlery, spoons and forks, of base metal; parts thereof of base metal | 29 | 34 | 0,3 | 0,3 | 4,8 | 0,0 | 14,7 | 0,0 |
| 700 | Machinery | 1 342 | 1 462 | 15,5 | 14,4 | 7,3 | 1,2 | 9,0 | 1,4 |
| 85 | Electrical machinery and equipment; sound recorders/reproducers; parts and accessories thereof | 786 | 877 | 9,1 | 8,7 | 15,2 | 1,3 | 11,6 | 1,0 |
| 84 | Nuclear reactors, boilers, machinery and mechanical appliances; parts thereof | 556 | 585 | 6,4 | 5,8 | -2,7 | -0,2 | 5,3 | 0,3 |
| 800 | Transport equipment | 1 049 | 1 401 | 12,1 | 13,8 | 26,5 | 3,1 | 33,6 | 4,1 |
| 87 | Vehicles other than railway or tramway rolling stock, and parts and accessories thereof | 994 | 1 366 | 11,5 | 13,5 | 28,0 | 3,1 | 37,4 | 4,3 |
| 900 | Other manufactured goods | 759 | 806 | 8,8 | 8,0 | 4,2 | 0,4 | 6,1 | 0,5 |
| 94 | Furniture; lamps&lighting fittings, nes.; illuminated signs/nameplates and the like; prefab. buildings | 272 | 293 | 3,1 | 2,9 | 4,4 | 0,1 | 7,7 | 0,2 |
| 69 | Ceramic products | 132 | 142 | 1,5 | 1,4 | 4,2 | 0,1 | 7,8 | 0,1 |
| 70 | Glass and glassware | 108 | 121 | 1,2 | 1,2 | 10,9 | 0,1 | 12,7 | 0,2 |
| 90 | Optical/photographic/cinematographic/measuring/checking/precision/medical/surgical instruments and apparatus | 82 | 96 | 0,9 | 1,0 | 16,6 | 0,2 | 18,3 | 0,2 |
| 68 | Articles of stone, plaster, cement, asbestos, mica or similar materials | 79 | 82 | 0,9 | 0,8 | 2,5 | 0,0 | 3,5 | 0,0 |

Memo:

| | | | | | | | | |
|-------------------------------|-------|-------|------|------|------|------|------|------|
| Total without Energy Products | 7 978 | 9 586 | 92,1 | 94,6 | 16,3 | 15,4 | 20,2 | 18,6 |
|-------------------------------|-------|-------|------|------|------|------|------|------|

Source: GEE, based on data on International Trade statistics from Statistics Portugal (new data series for 1993-2009; provisional version for 2010 and preliminary for 2011). Estimates for operators under the assimilation threshold and non-responses are included in Intra-EU trade.

Notes:

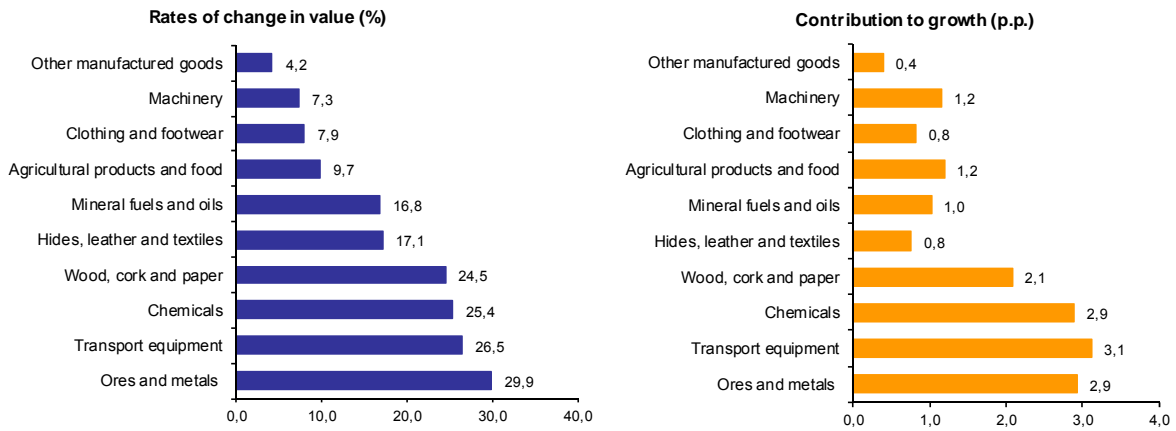
*Sum of Dispatches to EU and Exports to third countries.

Composition by Group of Products - 000 (Chap. 01 to 24 of CN) - 100 (Chap. 27) - 200 (Chap. 28 to 40) - 300 (Chap. 44 to 49) - 400 (Chap. 41 to 43, 50 to 60 and 63) - 500 (Chap. 61, 62, 64 to 67) - 600 (Chap. 25, 26, 71 to 83) - 700 (Chap. 84 and 85) - 800 (Chap. 86 to 89) - 900 (Chap. 68 to 70 and 90 to 99).

[1] Contribution to the growth rate of exports, shift share analysis: (rate of change) x (weight in the previous period) ÷ 100.

Chart 2 - Growth rates of exports of Portuguese goods by group of products and its contribution to growth (Intra + Extra-EU)

Previous 12 months ending in march 2011



Source: Table 5 – Portuguese Exports (Intra + Extra EU) of Goods by Group of Products.

Table 6 - Portuguese Exports of Goods by Group of Products (Extra-EU)

Preliminary data version of january to march 2011

| Group of Products | Extra-EU (Fob) | | values in Millions of Euros | | | | |
|------------------------------------|------------------|--------------|-----------------------------|---------------|----------------|--------------|--------------|
| | january to march | | y.o.y., % | | Structure (%) | | |
| | 2010 | 2011 | Last 12 months | jan-mar 11/10 | Last 12 months | jan-mar | |
| | | | | | | 2010 | 2011 |
| Total Exports | 2 101 | 2 393 | 16,8 | 13,9 | 100,0 | 100,0 | 100,0 |
| 000 Agricultural products and food | 246 | 317 | 20,3 | 28,7 | 13,4 | 11,7 | 13,2 |
| 100 Mineral fuels and oils | 383 | 269 | 14,8 | -29,8 | 13,8 | 18,2 | 11,2 |
| 200 Chemicals | 195 | 303 | 28,1 | 55,8 | 10,9 | 9,3 | 12,7 |
| 300 Wood, cork and paper | 199 | 244 | 28,9 | 22,7 | 10,1 | 9,5 | 10,2 |
| 400 Hides, leather and textiles | 94 | 127 | 25,1 | 35,9 | 5,0 | 4,5 | 5,3 |
| 500 Clothing and footwear | 63 | 78 | 17,1 | 23,7 | 3,0 | 3,0 | 3,2 |
| 600 Ores and metals | 207 | 307 | 26,0 | 48,7 | 11,2 | 9,8 | 12,8 |
| 700 Machinery | 413 | 425 | 3,8 | 2,8 | 18,3 | 19,7 | 17,7 |
| 800 Transport equipment | 126 | 126 | 14,2 | 0,2 | 5,9 | 6,0 | 5,3 |
| 900 Other manufactured goods | 176 | 198 | 6,6 | 12,2 | 8,4 | 8,4 | 8,3 |
| Memo: | | | | | | | |
| Total without Energy Products | 1 718 | 2 124 | 17,1 | 23,7 | 86,2 | 81,8 | 88,8 |

Source: GEE, based on data on International Trade statistics from Statistics Portugal (new data series for 1993-2009; provisional version for 2010 and preliminary for 2011).

Note:

Composition by Group of Products - 000 (Chap. 01 to 24 of CN) - 100 (Chap. 27) - 200 (Chap. 28 to 40) - 300 (Chap. 44 to 49) - 400 (Chap. 41 to 43, 50 to 60 and 63) - 500 (Chap. 61, 62, 64 to 67) - 600 (Chap. 25, 26, 71 to 83) - 700 (Chap. 84 and 85) - 800 (Chap. 86 to 89) - 900 (Chap. 68 to 70 and 90 to 99).

**Table - 7 – Exports (Intra+Extra EU) of Portuguese goods by Group of Products (2006-2011)
sorted in descending order of their relative weight in 2010**

Growth rate and Contribution to growth

| Grp. and CN-2 | Description | Share in 2010 (%) | y.o.y., % | | | | | Contrib. (p.p.) ^[1] | | |
|---------------------|--|-------------------------|-------------|-------------|-------------|--------------|-------------|--------------------------------|-------------|-----------------|
| | | | 2006 | 2007 | 2008 | 2009 | 2010 | jan-mar 11/10 | 2010 | jan-mar 2011 |
| | TOTAL | 100,0 | 14,5 | 7,4 | 1,4 | -18,4 | 16,0 | 17,0 | 16,0 | 17,0 |
| 700 | Machinery | 14,9 | 16,1 | 7,6 | -0,8 | -31,0 | 6,3 | 9,0 | 1,0 | 1,4 |
| 85 | Electrical machinery and equipment; sound recorders/reproducers; parts and accessories thereof | 8,9 | 22,3 | 9,3 | -1,4 | -37,4 | 15,5 | 11,6 | 1,4 | 1,0 |
| 84 | Nuclear reactors, boilers, machinery and mechanical appliances; parts thereof | 6,1 | 8,0 | 5,1 | 0,0 | -21,4 | -4,8 | 5,3 | -0,4 | 0,3 |
| 800 | Transport equipment | 12,4 | 9,2 | 2,8 | -2,7 | -21,4 | 22,2 | 33,6 | 2,6 | 4,1 |
| 87 | Vehicles other than railway or tramway rolling stock, and parts and accessories thereof | 11,8 | 14,3 | -0,7 | -3,5 | -19,5 | 23,2 | 37,4 | 2,6 | 4,3 |
| 200 | Chemicals | 11,9 | 13,1 | 10,1 | 2,4 | -14,6 | 23,0 | 32,9 | 2,6 | 3,8 |
| 39 | Plastics and articles thereof | 4,8 | 13,9 | 12,9 | 0,8 | -16,5 | 29,8 | 23,3 | 1,3 | 1,1 |
| 000 | Agricultural products and food | 11,7 | 15,0 | 17,1 | 15,0 | -5,0 | 7,3 | 12,6 | 0,9 | 1,4 |
| 600 | Ores and metals | 10,5 | 32,2 | 11,5 | -1,5 | -23,9 | 23,3 | 41,7 | 2,3 | 3,9 |
| 500 | Clothing and footwear | 9,8 | 2,3 | 1,9 | -2,8 | -11,4 | 3,8 | 11,4 | 0,4 | 1,2 |
| 61 | Articles of apparel and clothing accessories, knitted or crocheted | 4,1 | 3,7 | 0,6 | -5,5 | -11,9 | 1,5 | 9,4 | 0,1 | 0,4 |
| 64 | Footwear, gaiters and the like; parts of such articles | 3,7 | 2,2 | 2,7 | 2,6 | -8,2 | 5,1 | 20,0 | 0,2 | 0,8 |
| 300 | Wood, cork and paper | 9,2 | 11,3 | -3,5 | 1,9 | -12,1 | 26,0 | 14,8 | 2,2 | 1,3 |
| 48 | Paper and paperboard; articles of paper pulp, of paper or of paperboard | 4,2 | 11,6 | 0,2 | 8,3 | -4,5 | 41,0 | 10,0 | 1,4 | 0,4 |
| 900 | Other manufactured goods | 8,6 | 10,8 | 29,6 | -3,2 | -9,2 | 4,5 | 6,1 | 0,4 | 0,5 |
| 100 | Mineral fuels and oils | 6,7 | 49,0 | -8,6 | 25,1 | -28,4 | 59,5 | -19,8 | 2,9 | -1,6 |
| 27 | Mineral fuel/oils and products of their distillation; bituminous substances; mineral waxes | 6,7 | 49,0 | -8,6 | 25,1 | -28,4 | 59,5 | -19,8 | 2,9 | -1,6 |
| 400 | Hides, leather and textiles | 4,4 | 6,5 | 3,7 | -5,6 | -16,3 | 13,7 | 21,2 | 0,6 | 0,9 |

Source: GEE, based on data on International Trade statistics from Statistics Portugal (new data series for 1993-2009; provisional version for 2010 and preliminary for 2011). Estimates for operators under the assimilation threshold and non-responses are included in Intra-EU trade.

Note:

[1] Contributions to growth, shift share analysis: (rate of change) x (weight in the previous period) ÷ 100.

Table 8 – Exports (Intra+Extra EU) of goods to selected markets

Preliminary data version of January to March 2011

| Intra + Extra-EU (Fob) | | values in Millions of Euros | | | | | | | |
|------------------------|--------------|-----------------------------|---------------|--------------|--|-------------------|-------------|-------------------|--|
| Destination | jan-mar | | Structure (%) | | Growth rates and contributions to growth [1] | | | | |
| | 2010 | 2011 | jan-mar | | Last 12 months [1] | | jan-mar | | |
| | | | 2010 | 2011 | y.o.y., % [1] | Contrib. p.p. [2] | y.o.y. % | Contrib. p.p. [2] | |
| TOTAL | 8 659 | 10 133 | 100,0 | 100,0 | 16,4 | 16,4 | 17,0 | 17,0 | |
| INTRA EU(27) | 6 559 | 7 739 | 75,7 | 76,4 | 16,2 | 12,2 | 18,0 | 13,6 | |
| of which: | | | | | | | | | |
| EU-15 | 6 307 | 7 453 | 72,8 | 73,6 | 16,0 | 11,6 | 18,2 | 13,2 | |
| Spain | 2 353 | 2 640 | 27,2 | 26,1 | 12,3 | 3,3 | 12,2 | 3,3 | |
| Germany | 1 106 | 1 418 | 12,8 | 14,0 | 21,7 | 2,8 | 28,2 | 3,6 | |
| France | 1 075 | 1 309 | 12,4 | 12,9 | 13,4 | 1,6 | 21,8 | 2,7 | |
| United Kingdom | 484 | 518 | 5,6 | 5,1 | 8,7 | 0,5 | 6,9 | 0,4 | |
| Netherlands | 320 | 410 | 3,7 | 4,0 | 22,0 | 0,8 | 28,0 | 1,0 | |
| Italy | 344 | 409 | 4,0 | 4,0 | 18,6 | 0,7 | 18,9 | 0,8 | |
| Belgium | 269 | 288 | 3,1 | 2,8 | 25,5 | 0,7 | 6,8 | 0,2 | |
| Sweden | 93 | 114 | 1,1 | 1,1 | 10,6 | 0,1 | 23,1 | 0,2 | |
| Denmark | 62 | 65 | 0,7 | 0,6 | 13,1 | 0,1 | 4,4 | 0,0 | |
| Enlargement | 252 | 286 | 2,9 | 2,8 | 23,0 | 0,7 | 13,7 | 0,4 | |
| Poland | 77 | 82 | 0,9 | 0,8 | 12,3 | 0,1 | 6,4 | 0,1 | |
| EXTRA EU(27) | 2 100 | 2 393 | 24,3 | 23,6 | 16,8 | 4,1 | 13,9 | 3,4 | |
| of which: | | | | | | | | | |
| Angola | 448 | 483 | 5,2 | 4,8 | -7,9 | -0,5 | 7,8 | 0,4 | |
| United States | 357 | 340 | 4,1 | 3,4 | 14,4 | 0,5 | -4,6 | -0,2 | |
| Brazil | 85 | 137 | 1,0 | 1,4 | 48,8 | 0,5 | 60,3 | 0,6 | |
| Mexico | 53 | 81 | 0,6 | 0,8 | 81,5 | 0,6 | 52,5 | 0,3 | |
| Switzerland | 77 | 91 | 0,9 | 0,9 | 19,6 | 0,2 | 18,6 | 0,2 | |
| Morocco | 55 | 82 | 0,6 | 0,8 | 45,5 | 0,3 | 48,1 | 0,3 | |
| Turkey | 58 | 77 | 0,7 | 0,8 | 23,8 | 0,2 | 31,8 | 0,2 | |
| Cape Verde | 59 | 67 | 0,7 | 0,7 | 18,5 | 0,1 | 13,6 | 0,1 | |
| China | 55 | 79 | 0,6 | 0,8 | 8,3 | 0,1 | 43,0 | 0,3 | |
| Algeria | 47 | 86 | 0,5 | 0,8 | 33,5 | 0,2 | 80,7 | 0,4 | |
| Memo: | | | | | | | | | |
| Gibraltar | 64 | 30 | 0,7 | 0,3 | 16,4 | 0,1 | -52,2 | -0,4 | |
| ACPOL [3] | 553 | 610 | 6,4 | 6,0 | -2,8 | -0,2 | 10,3 | 0,7 | |
| EFTA | 100 | 114 | 1,2 | 1,1 | 16,0 | 0,2 | 14,1 | 0,2 | |

Source: GEE, based on data on International Trade statistics from Statistics Portugal (new data series for 1993-2009; provisional version for 2010 and preliminary for 2011). Estimates for operators under the assimilation threshold and non-responses are included in Intra-EU trade.

Notes:

Countries ranked in descending order of value in 2010.

[1] (apr 10-mar 11)/(apr 09-mar 10) x 100 - 100

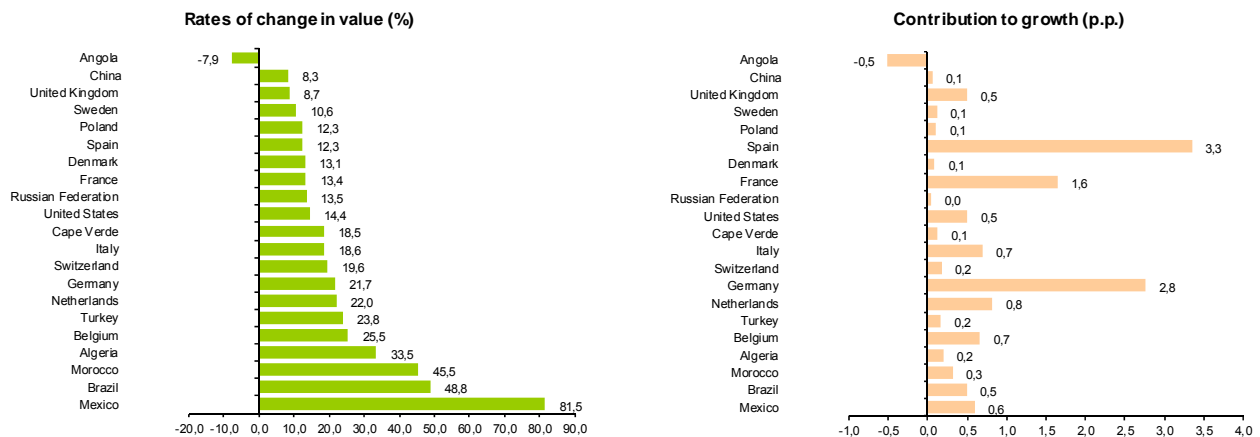
[2] Contributions to growth, shift share analysis: (rate of change) x (weight in the previous period) ÷ 100.

[3] African Countries of Portuguese Official Language.

Chart 3 - Growth rates of Exports (Intra + Extra-EU)

to selected markets and corresponding contributions to growth

Previous 12 months ending in March 2011



Source: Table 8 – Exports (Intra+Extra EU) of goods from selected markets.

Table 9 - Exports of goods to selected markets

Preliminary data version of January to March 2011

| Extra-EU (Fob) | | values in Millions of Euros | | | | | | |
|----------------------|--------------|-----------------------------|---------------|--------------|--------------|--------------|-------------------------------|---------------|
| Destination | jan-mar | | Structure (%) | | | | y.o.y., % | |
| | 2010 | 2011 | Annual | | jan-mar | | Last 12 months ^[1] | jan-mar 11/10 |
| | | | 2005 | 2010 | 2010 | 2011 | | |
| EXTRA EU (27) | 2 100 | 2 393 | 100,0 | 100,0 | 100,0 | 100,0 | 16,8 | 13,9 |
| of which: | | | | | | | | |
| Angola | 448 | 483 | 13,1 | 20,8 | 21,3 | 20,2 | -7,9 | 7,8 |
| United States | 357 | 340 | 26,9 | 14,4 | 17,0 | 14,2 | 14,4 | -4,6 |
| Brazil | 85 | 137 | 2,9 | 4,8 | 4,1 | 5,7 | 48,8 | 60,3 |
| Mexico | 53 | 81 | 1,4 | 4,4 | 2,5 | 3,4 | 81,5 | 52,5 |
| Switzerland | 77 | 91 | 4,1 | 3,6 | 3,7 | 3,8 | 19,6 | 18,6 |
| Morocco | 55 | 82 | 2,1 | 3,3 | 2,6 | 3,4 | 45,5 | 48,1 |
| Turkey | 58 | 77 | 3,8 | 2,9 | 2,8 | 3,2 | 23,8 | 31,8 |
| Cape Verde | 59 | 67 | 2,4 | 2,9 | 2,8 | 2,8 | 18,5 | 13,6 |
| China | 55 | 79 | 2,8 | 2,6 | 2,6 | 3,3 | 8,3 | 43,0 |
| Algeria | 47 | 86 | 0,9 | 2,3 | 2,3 | 3,6 | 33,5 | 80,7 |
| Memo: | | | | | | | | |
| Gibraltar | 64 | 30 | 0,3 | 2,2 | 3,0 | 1,3 | 16,4 | -52,2 |
| ACPOL ^[2] | 553 | 610 | 17,3 | 26,3 | 26,3 | 25,5 | -2,8 | 10,3 |
| EFTA | 100 | 114 | 5,8 | 4,6 | 4,8 | 4,8 | 16,0 | 14,1 |

Source: GEE, based on data on International Trade statistics from Statistics Portugal (new data series for 1993-2009; provisional version for 2010 and preliminary for 2011).

Note:

Countries ranked in descending order of value in 2010.

[1] (apr 10-mar 11)/(apr 09-mar 10) x 100 - 100

[2] African Countries of Portuguese Official Language.

Table 10 - Exports (Intra + Extra-EU) of Portuguese Goods to a selection of markets (2006-2011)

Main markets in 2010

| Destination | 2006 | 2007 | 2008 | 2009 | 2010 | jan-mar | |
|---------------------|--------------|--------------|--------------|--------------|--------------|--------------|--------------|
| | | | | | | 2010 | 2011 |
| Total | 100,0 | 100,0 | 100,0 | 100,0 | 100,0 | 100,0 | 100,0 |
| INTRA EU(27) | 78,1 | 77,1 | 74,4 | 75,4 | 75,0 | 75,7 | 76,4 |
| EU-15 | 76,0 | 74,7 | 71,6 | 72,5 | 71,9 | 72,8 | 73,6 |
| Spain | 28,4 | 28,7 | 27,9 | 27,2 | 26,6 | 27,2 | 26,1 |
| Germany | 13,0 | 12,9 | 12,8 | 13,0 | 13,0 | 12,8 | 14,0 |
| France | 12,5 | 12,6 | 11,8 | 12,4 | 11,8 | 12,4 | 12,9 |
| United Kingdom | 6,9 | 6,0 | 5,5 | 5,6 | 5,5 | 5,6 | 5,1 |
| Netherlands | 3,7 | 3,5 | 3,3 | 3,6 | 3,8 | 3,7 | 4,0 |
| Italy | 4,1 | 4,1 | 3,7 | 3,7 | 3,8 | 4,0 | 4,0 |
| Belgium | 3,1 | 2,6 | 2,5 | 2,5 | 2,9 | 3,1 | 2,8 |
| Enlargement | 2,1 | 2,4 | 2,8 | 2,8 | 3,1 | 2,9 | 2,8 |
| EXTRA EU(27) | 21,9 | 22,9 | 25,6 | 24,6 | 25,0 | 24,3 | 23,6 |
| Angola | 3,4 | 4,4 | 5,8 | 7,1 | 5,2 | 5,2 | 4,8 |
| United States | 5,9 | 4,7 | 3,4 | 3,2 | 3,6 | 4,1 | 3,4 |
| Brazil | 0,7 | 0,7 | 0,8 | 0,9 | 1,2 | 1,0 | 1,4 |
| Mexico | 0,4 | 0,3 | 0,6 | 0,6 | 1,1 | 0,6 | 0,8 |
| Switzerland | 0,8 | 0,7 | 0,8 | 0,9 | 0,9 | 0,9 | 0,9 |
| Morocco | 0,5 | 0,5 | 0,7 | 0,7 | 0,8 | 0,6 | 0,8 |
| Turkey | 0,7 | 0,6 | 0,6 | 0,6 | 0,7 | 0,7 | 0,8 |
| Cape Verde | 0,5 | 0,6 | 0,7 | 0,7 | 0,7 | 0,7 | 0,7 |
| China | 0,6 | 0,5 | 0,5 | 0,7 | 0,6 | 0,6 | 0,8 |
| Algeria | 0,2 | 0,2 | 0,5 | 0,6 | 0,6 | 0,5 | 0,8 |

Source: GEE, based on data on International Trade statistics from Statistics Portugal (new data series for 1993-2009; provisional version for 2010 and preliminary for 2011). Estimates for operators under the assimilation threshold and non-responses are included in Intra-EU trade.

Table 11 - Exports (Intra + Extra-EU) of Portuguese Goods to a selection of markets (2007-2011) growth rate and contribution to growth^[1]
Main markets in 2010

| Destination | Share in 2010 (%) | y.o.y., % | | | | | Contrib. (p.p.) ^[1] | |
|----------------------|-------------------|-------------|-------------|--------------|-------------|--------------|--------------------------------|--------------|
| | | 2007 | 2008 | 2009 | 2010 | 2011 jan-mar | 2010 | jan-mar 2011 |
| Total | 100,0 | 7,4 | 1,4 | -18,4 | 16,0 | 17,0 | 16,0 | 17,0 |
| INTRA EU (27) | 75,0 | 6,0 | -2,1 | -17,3 | 15,4 | 18,0 | 11,6 | 13,6 |
| EU-15 | 71,9 | 5,7 | -2,8 | -17,4 | 15,0 | 18,2 | 10,9 | 13,2 |
| Spain | 26,6 | 8,3 | -1,4 | -20,3 | 13,2 | 12,2 | 3,6 | 3,3 |
| Germany | 13,0 | 6,7 | -0,1 | -17,1 | 16,5 | 28,2 | 2,1 | 3,6 |
| France | 11,8 | 8,0 | -5,0 | -14,2 | 10,3 | 21,8 | 1,3 | 2,7 |
| United Kingdom | 5,5 | -5,8 | -8,1 | -15,8 | 12,6 | 6,9 | 0,7 | 0,4 |
| Netherlands | 3,8 | -0,6 | -3,6 | -10,2 | 22,4 | 28,0 | 0,8 | 1,0 |
| Italy | 3,8 | 9,4 | -9,4 | -17,1 | 17,4 | 18,9 | 0,7 | 0,8 |
| Belgium | 2,9 | -12,2 | -1,6 | -18,9 | 34,7 | 6,8 | 0,9 | 0,2 |
| Enlargement | 3,1 | 18,4 | 19,2 | -16,1 | 25,5 | 13,7 | 0,7 | 0,4 |
| EXTRA EU (27) | 25,0 | 12,6 | 13,4 | -21,5 | 17,8 | 13,9 | 4,4 | 3,4 |
| Angola | 5,2 | 39,2 | 34,3 | -0,8 | -14,6 | 7,8 | -1,0 | 0,4 |
| United States | 3,6 | -15,1 | -25,0 | -24,5 | 31,1 | -4,6 | 1,0 | -0,2 |
| Brazil | 1,2 | 1,4 | 23,9 | -7,9 | 49,5 | 60,3 | 0,5 | 0,6 |
| Mexico | 1,1 | -13,8 | 85,3 | -8,5 | 98,8 | 52,5 | 0,6 | 0,3 |
| Switzerland | 0,9 | -1,4 | 12,6 | -3,5 | 15,4 | 18,6 | 0,1 | 0,2 |
| Morocco | 0,8 | 21,6 | 37,1 | -21,2 | 40,4 | 48,1 | 0,3 | 0,3 |
| Turkey | 0,7 | -3,3 | -2,1 | -8,0 | 32,0 | 31,8 | 0,2 | 0,2 |
| Cape Verde | 0,7 | 20,2 | 13,0 | -13,5 | 18,3 | 13,6 | 0,1 | 0,1 |
| China | 0,6 | -15,3 | 1,6 | 20,5 | 6,0 | 43,0 | 0,0 | 0,3 |
| Algeria | 0,6 | 9,6 | 126,9 | 9,0 | 8,9 | 80,7 | 0,1 | 0,4 |

Source: GEE, based on data on International Trade statistics from Statistics Portugal (new data series for 1993-2009; provisional version for 2010 and preliminary for 2011). Estimates for operators under the assimilation threshold and non-responses are included in Intra-EU trade.

Note:

[1] Contributions to growth, shift share analysis: (rate of change) x (weight in the previous period) ÷ 100.

Imports* of Goods

Table 12 - Portuguese Imports of goods by Group of Products

Of which: products by Chapter (CN-2) above 55 million euros in 2011

| Grp/ CN-2 | Groups of Products | Millions of Euros | | Structure (%) | | (Intra + Extra-EU) | | | |
|--------------|---|-------------------|---------------|---------------|--------------|--------------------|---------------------|--------------|---------------------|
| | | jan-mar | | jan-mar | | Last 12 months | | jan-mar | |
| | | 2010 | 2011 | 2010 | 2011 | y.o.y. | Contrib. | y.o.y. | Contrib. |
| | | | | | | % | p.p. ^[1] | % | p.p. ^[1] |
| | TOTAL IMPORTS | 13 273 | 14 403 | 100,0 | 100,0 | 10,9 | 10,9 | 8,5 | 8,5 |
| 000 | Agricultural products and food | 1 796 | 2 097 | 13,5 | 14,6 | 6,6 | 1,0 | 16,8 | 2,3 |
| 03 | Fish and crustaceans, molluscs and other aquatic invertebrates | 280 | 303 | 2,1 | 2,1 | 6,7 | 0,2 | 8,2 | 0,2 |
| 02 | Meat and edible meat offal | 186 | 205 | 1,4 | 1,4 | 1,2 | 0,0 | 10,6 | 0,1 |
| 10 | Cereals | 135 | 204 | 1,0 | 1,4 | 18,7 | 0,2 | 50,8 | 0,5 |
| 12 | Oil seeds/oleaginous fruits/miscellaneous grains, seeds and fruits/industrial or medicinal plants/straw and fodder | 123 | 154 | 0,9 | 1,1 | 20,5 | 0,2 | 24,7 | 0,2 |
| 15 | Animal/vegetable fats and oils and their cleavage products; prepared edible fats; animal/vegetable waxes | 82 | 153 | 0,6 | 1,1 | 33,4 | 0,2 | 87,0 | 0,5 |
| 04 | Dairy produce; birds eggs; natural honey; edible products of animal origin, nes. | 115 | 114 | 0,9 | 0,8 | -5,5 | -0,1 | -0,9 | 0,0 |
| 07 | Edible vegetables and certain roots and tubers | 89 | 106 | 0,7 | 0,7 | 18,9 | 0,1 | 19,3 | 0,1 |
| 08 | Edible fruit and nuts; peel of citrus fruit or melons | 98 | 105 | 0,7 | 0,7 | 13,5 | 0,1 | 6,8 | 0,1 |
| 19 | Preparations of cereals, flour, starch or milk; pastrycooks products | 99 | 103 | 0,7 | 0,7 | 2,1 | 0,0 | 3,9 | 0,0 |
| 23 | Residues and waste from the food industries; prepared animal fodder | 70 | 83 | 0,5 | 0,6 | 6,6 | 0,0 | 19,3 | 0,1 |
| 17 | Sugars and sugar confectionery | 74 | 76 | 0,6 | 0,5 | -15,4 | -0,1 | 2,3 | 0,0 |
| 22 | Beverages, spirits and vinegar | 72 | 74 | 0,5 | 0,5 | -3,9 | 0,0 | 3,6 | 0,0 |
| 21 | Miscellaneous edible preparations | 74 | 74 | 0,6 | 0,5 | -2,2 | 0,0 | 0,2 | 0,0 |
| 20 | Preparations of vegetables, fruit, nuts or other parts of plants | 58 | 61 | 0,4 | 0,4 | -0,2 | 0,0 | 6,4 | 0,0 |
| 100 | Mineral fuels and oils | 1 894 | 2 210 | 14,3 | 15,3 | 24,7 | 3,3 | 16,7 | 2,4 |
| 27 | Mineral fuel/oils and products of their distillation; bituminous substances; mineral waxes | 1 894 | 2 210 | 14,3 | 15,3 | 24,7 | 3,3 | 16,7 | 2,4 |
| 200 | Chemicals | 2 038 | 2 351 | 15,4 | 16,3 | 13,2 | 2,0 | 15,4 | 2,4 |
| 39 | Plastics and articles thereof | 507 | 631 | 3,8 | 4,4 | 17,8 | 0,7 | 24,6 | 0,9 |
| 30 | Pharmaceutical products | 532 | 529 | 4,0 | 3,7 | 0,0 | 0,0 | -0,7 | 0,0 |
| 29 | Organic chemicals | 217 | 269 | 1,6 | 1,9 | 29,6 | 0,4 | 24,0 | 0,4 |
| 38 | Miscellaneous chemical products | 162 | 206 | 1,2 | 1,4 | 25,0 | 0,3 | 27,0 | 0,3 |
| 40 | Rubber and articles thereof | 171 | 206 | 1,3 | 1,4 | 20,5 | 0,2 | 20,5 | 0,3 |
| 32 | Tanning/dyeing extracts; tannins & derivatives; colouring matter; paints & varnishes; mastics; inks | 108 | 128 | 0,8 | 0,9 | 13,2 | 0,1 | 18,8 | 0,2 |
| 33 | Essential oils and resinoids; perfumery, cosmetic or toilet preparations | 129 | 120 | 1,0 | 0,8 | -0,8 | 0,0 | -7,0 | -0,1 |
| 34 | Soaps, artif. waxes, candles, modelling pastes, 'dental waxes' and dental preparations, washing/lubricating/polishing or scouring prep. | 76 | 91 | 0,6 | 0,6 | 7,5 | 0,0 | 20,3 | 0,1 |
| 28 | Inorganic chemicals; organic or inorganic compounds of precious metals/rare-earth metals/radioactive elements/isotopes | 56 | 80 | 0,4 | 0,6 | 31,4 | 0,1 | 44,1 | 0,2 |
| 300 | Hides, wood, cork and paper | 591 | 648 | 4,5 | 4,5 | 10,9 | 0,5 | 9,6 | 0,4 |
| 48 | Paper and paperboard; articles of paper pulp, of paper or of paperboard | 256 | 273 | 1,9 | 1,9 | 5,1 | 0,1 | 6,6 | 0,1 |
| 44 | Wood and articles of wood; wood charcoal | 127 | 141 | 1,0 | 1,0 | 20,6 | 0,2 | 11,4 | 0,1 |
| 41 | Raw hides and skins (other than furskins) and leather | 71 | 94 | 0,5 | 0,7 | 22,1 | 0,1 | 32,7 | 0,2 |
| 42 | Articles of leather, saddlery and harness; travel goods, handbags and similar containers; articles of animal gut (other than silk worm gut) | 55 | 56 | 0,4 | 0,4 | 5,9 | 0,0 | 1,6 | 0,0 |
| 400 | Textiles, clothing and footwear | 933 | 988 | 7,0 | 6,9 | 10,0 | 0,7 | 5,9 | 0,4 |
| 62 | Articles of apparel and clothing accessories, not knitted or crocheted | 221 | 212 | 1,7 | 1,5 | 0,9 | 0,0 | -4,0 | -0,1 |
| 61 | Articles of apparel and clothing accessories, knitted or crocheted | 206 | 207 | 1,6 | 1,4 | 7,6 | 0,1 | 0,5 | 0,0 |
| 64 | Footwear, gaiters and the like; parts of such articles | 138 | 152 | 1,0 | 1,1 | 10,5 | 0,1 | 10,1 | 0,1 |
| 52 | Cotton | 99 | 109 | 0,7 | 0,8 | 33,1 | 0,2 | 9,9 | 0,1 |
| 54 | Man-made filaments; strip and the like of man-made textile materials | 57 | 71 | 0,4 | 0,5 | 17,6 | 0,1 | 24,6 | 0,1 |
| 55 | Man-made staple fibres | 51 | 69 | 0,4 | 0,5 | 20,8 | 0,1 | 34,0 | 0,1 |
| 500 | Ores and metals | 1 134 | 1 354 | 8,5 | 9,4 | 16,0 | 1,3 | 19,5 | 1,7 |
| 72 | Iron and steel | 416 | 520 | 3,1 | 3,6 | 23,5 | 0,7 | 25,0 | 0,8 |
| 73 | Articles of iron or steel | 209 | 242 | 1,6 | 1,7 | -2,8 | -0,1 | 15,8 | 0,2 |
| 74 | Copper and articles thereof | 134 | 191 | 1,0 | 1,3 | 38,8 | 0,3 | 43,2 | 0,4 |
| 76 | Aluminium and articles thereof | 179 | 183 | 1,3 | 1,3 | 15,4 | 0,2 | 2,1 | 0,0 |
| 83 | Miscellaneous articles of base metal | 56 | 61 | 0,4 | 0,4 | 2,1 | 0,0 | 9,7 | 0,0 |
| 600 | Machinery [2] | 2 181 | 2 166 | 16,4 | 15,0 | -3,4 | -0,6 | -0,7 | -0,1 |
| 84 | Nuclear reactors, boilers, machinery and mechanical appliances; parts thereof | 1 110 | 1 094 | 8,4 | 7,6 | -8,5 | -0,8 | -1,5 | -0,1 |
| 85 | Electrical machinery and equipment; sound recorders/reproducers; parts and accessories thereof | 1 071 | 1 072 | 8,1 | 7,4 | 2,5 | 0,2 | 0,2 | 0,0 |
| 700 | Transport equipment [3] | 1 815 | 1 814 | 13,7 | 12,6 | 23,8 | 2,9 | -0,1 | 0,0 |
| 87 | Vehicles other than railway or tramway rolling stock, and parts and accessories thereof | 1 521 | 1 719 | 11,5 | 11,9 | 25,5 | 2,7 | 13,0 | 1,5 |
| 88 | Aircraft, spacecraft, and parts thereof | 135 | 75 | 1,0 | 0,5 | -68,2 | -0,8 | -44,7 | -0,5 |
| 800 | Other manufactured goods | 893 | 776 | 6,7 | 5,4 | -2,1 | -0,1 | -13,0 | -0,9 |
| 90 | Optical/photographic/cinematographic/measuring/checking/precision/medical/surgical instruments and apparatus | 274 | 269 | 2,1 | 1,9 | 2,6 | 0,1 | -1,9 | 0,0 |
| 94 | Furniture; lamps & lighting fittings, nes.; illuminated signs/nameplates and the like; prefab. buildings | 188 | 200 | 1,4 | 1,4 | -1,7 | 0,0 | 6,1 | 0,1 |
| 70 | Glass and glassware | 78 | 82 | 0,6 | 0,6 | 17,8 | 0,1 | 4,9 | 0,0 |
| 95 | Toys, games and sports requisites; parts and accessories thereof | 67 | 63 | 0,5 | 0,4 | -2,4 | 0,0 | -5,3 | 0,0 |

Memo:

| | | | | | | | | |
|-------------------------------|--------|--------|------|------|-----|-----|-----|-----|
| Total without Energy Products | 11 379 | 12 194 | 85,7 | 84,7 | 8,8 | 7,6 | 7,2 | 6,1 |
|-------------------------------|--------|--------|------|------|-----|-----|-----|-----|

Source: GEE, based on data on International Trade statistics from Statistics Portugal (new data series for 1993-2009; provisional version for 2010 and preliminary for 2011). Estimates for operators under the assimilation threshold and non-responses are included in Intra-EU trade.

Notes:

Sum of Arrivals from EU and Imports from third countries.

Composition by Group of Products - 000 (Chap. 01 to 24 of CN) - 100 (Chap. 27) - 200 (Chap. 28 to 40) - 300 (Chap. 41 to 49) - 400 (Chap. 50 to 67) - 500 (Chap. 25, 26, 71 to 83) - 600 (Chap. 84 and 85) - 700 (Chap. 86 to 89) - 800 (Chap. 68 to 70 and 90 to 99).

[1] Contributions to growth, shift share analysis: (rate of change) x (weight in the previous period) ÷ 100.

[2] Does not include tractors.

[3] Includes tractors.

Table 13 - Portuguese Imports by Group of Products (Extra-EU)

Preliminary data version of January to March 2011

| Group of Products | January to March | | y.o.y., (%) | | Structure (%) | | |
|--|------------------|--------------|----------------|---------------|----------------|--------------|--------------|
| | | | Last 12 months | Jan-Mar 11/10 | Last 12 months | Jan-Mar | |
| | 2010 | 2011 | | | 2010 | 2011 | 2011 |
| Total Imports | 3 243 | 3 538 | 19,9 | 9,1 | 100,0 | 100,0 | 100,0 |
| 000 Agricultural products and food | 374 | 549 | 18,9 | 46,6 | 12,9 | 11,5 | 15,5 |
| 100 Mineral fuels and oils | 1 465 | 1 556 | 20,0 | 6,2 | 45,5 | 45,2 | 44,0 |
| 200 Chemicals | 246 | 330 | 48,4 | 34,1 | 8,9 | 7,6 | 9,3 |
| 300 Hides, wood, cork and paper | 88 | 104 | 43,4 | 17,2 | 3,1 | 2,7 | 2,9 |
| 400 Textiles, clothing and footwear | 184 | 217 | 40,7 | 17,9 | 6,3 | 5,7 | 6,1 |
| 500 Ores and metals | 192 | 231 | 22,2 | 20,3 | 6,0 | 5,9 | 6,5 |
| 600 Machinery ^[1] | 348 | 331 | 9,6 | -4,9 | 10,4 | 10,7 | 9,4 |
| 700 Transport equipment ^[2] | 236 | 110 | -22,2 | -53,2 | 3,6 | 7,3 | 3,1 |
| 800 Other manufactured goods | 110 | 111 | 11,3 | 0,9 | 3,4 | 3,4 | 3,1 |

Memo:

| | | | | | | | |
|-------------------------------|-------|-------|------|------|------|------|------|
| Total without Energy Products | 1 778 | 1 982 | 19,8 | 11,5 | 54,5 | 54,8 | 56,0 |
|-------------------------------|-------|-------|------|------|------|------|------|

Source: GEE, based on data on International Trade statistics from Statistics Portugal (new data series for 1993-2009; provisional version for 2010 and preliminary for 2011).

Notes:

Composition by Group of Products - 000 (Chap. 01 to 24 of CN) - 100 (Chap. 27) - 200 (Chap. 28 to 40) - 300 (Chap. 41 to 49) - 400 (Chap. 50 to 67) - 500 (Chap. 25, 26, 71 to 83) - 600 (Chap. 84 and 85) - 700 (Chap. 86 to 89) - 800 (Chap. 68 to 70 and 90 to 99).

[1] Does not include farm tractors.

[2] Includes farm tractors.

Table 14 - Imports of goods originating from selected markets

Preliminary data version of January to March 2011

| Country of Origin | Jan-Mar | | Structure (%) | | Growth rates and contributions to growth ^[1] | | | |
|------------------------|---------------|---------------|---------------|--------------|---|------------------------------|-------------|------------------------------|
| | | | Jan-Mar | | Last 12 months ^[1] | | Jan-Mar | |
| | 2010 | 2011 | 2010 | 2011 | y.o.y., % | Contrib. p.p. ^[2] | y.o.y., % | Contrib. p.p. ^[2] |
| TOTAL | 13 273 | 14 403 | 100,0 | 100,0 | 10,9 | 10,9 | 8,5 | 8,5 |
| INTRA EU (27) | 10 030 | 10 865 | 75,6 | 75,4 | 8,3 | 6,4 | 8,3 | 6,3 |
| of which: | | | | | | | | |
| EU-15 | 9 719 | 10 488 | 73,2 | 72,8 | 8,2 | 6,2 | 7,9 | 5,8 |
| Spain | 4 129 | 4 613 | 31,1 | 32,0 | 7,2 | 2,3 | 11,7 | 3,6 |
| Germany | 1 580 | 1 890 | 11,9 | 13,1 | 24,8 | 3,1 | 19,6 | 2,3 |
| France | 1 029 | 1 051 | 7,7 | 7,3 | -2,8 | -0,2 | 2,2 | 0,2 |
| Italy | 859 | 766 | 6,5 | 5,3 | -0,2 | 0,0 | -10,8 | -0,7 |
| Netherlands | 780 | 750 | 5,9 | 5,2 | 4,2 | 0,2 | -3,8 | -0,2 |
| United Kingdom | 483 | 489 | 3,6 | 3,4 | 22,2 | 0,7 | 1,3 | 0,0 |
| Belgium | 376 | 414 | 2,8 | 2,9 | 13,3 | 0,4 | 10,2 | 0,3 |
| Sweden | 149 | 149 | 1,1 | 1,0 | 9,2 | 0,1 | -0,1 | 0,0 |
| Ireland | 108 | 127 | 0,8 | 0,9 | 11,3 | 0,1 | 17,5 | 0,1 |
| Enlargement | 310 | 377 | 2,3 | 2,6 | 10,8 | 0,3 | 21,5 | 0,5 |
| EXTRA EU (27) | 3 243 | 3 538 | 24,4 | 24,6 | 19,9 | 4,5 | 9,1 | 2,2 |
| of which: | | | | | | | | |
| China | 361 | 370 | 2,7 | 2,6 | 31,6 | 0,7 | 2,7 | 0,1 |
| Nigeria | 206 | 437 | 1,6 | 3,0 | 29,6 | 0,7 | 112,0 | 1,7 |
| Brazil | 221 | 256 | 1,7 | 1,8 | 10,7 | 0,2 | 16,0 | 0,3 |
| United States | 240 | 312 | 1,8 | 2,2 | 2,2 | 0,0 | 30,3 | 0,5 |
| Libyan Arab Jamahiriya | 177 | 14 | 1,3 | 0,1 | 27,5 | 0,2 | -92,4 | -1,2 |
| Kazakhstan | 152 | 164 | 1,1 | 1,1 | 134,9 | 0,7 | 7,8 | 0,1 |
| Angola | 214 | 208 | 1,6 | 1,4 | 72,3 | 0,4 | -3,0 | 0,0 |
| Norway | 170 | 66 | 1,3 | 0,5 | -24,0 | -0,3 | -61,4 | -0,8 |
| Saudi Arabia | 112 | 179 | 0,8 | 1,2 | 44,6 | 0,3 | 60,5 | 0,5 |
| Russian Federation | 75 | 106 | 0,6 | 0,7 | -17,7 | -0,2 | 41,4 | 0,2 |
| India | 93 | 161 | 0,7 | 1,1 | 66,2 | 0,4 | 72,7 | 0,5 |
| Switzerland | 86 | 87 | 0,6 | 0,6 | 8,0 | 0,1 | 0,7 | 0,0 |
| Japan | 79 | 96 | 0,6 | 0,7 | 41,9 | 0,2 | 21,4 | 0,1 |

Memo:

| | | | | | | | | |
|----------------------|-----|-------|-----|-----|-------|------|-------|------|
| OPEC ^[3] | 899 | 1 112 | 6,8 | 7,7 | 23,0 | 1,5 | 23,7 | 1,6 |
| EFTA | 258 | 156 | 1,9 | 1,1 | -12,1 | -0,2 | -39,4 | -0,8 |
| ACPOL ^[4] | 218 | 214 | 1,6 | 1,5 | 59,6 | 0,4 | -2,2 | 0,0 |

Source: GEE, based on data on International Trade statistics from Statistics Portugal (new data series for 1993-2009; provisional version for 2010 and preliminary for 2011). Estimates for operators under the assimilation threshold and non-responses are included in Intra-EU trade.

Notes:

[1] (Apr 10-Mar 11)/(Apr 09-Mar 10) x 100 - 100

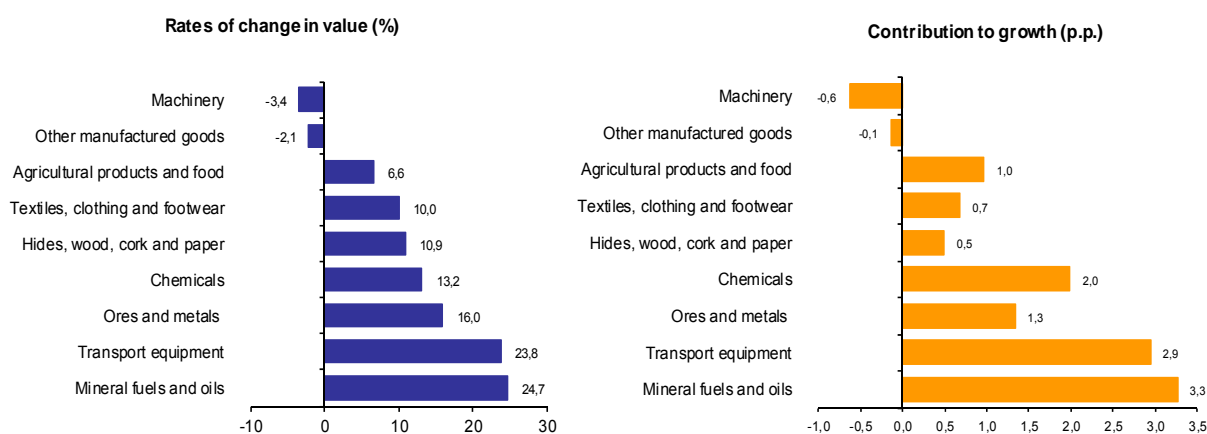
[2] Contributions to growth, shift share analysis: (rate of change) x (weight in the previous period) ÷ 100.

[3] Includes Angola.

[4] African Countries of Portuguese Official Language

Chart 4 - Growth rates of Portuguese Imports (Intra + Extra-EU) of goods by Group of Products and contribution to growth

Previous 12 months ending in march 2011



Source: Table 12 - Portuguese Imports of goods by Groups of Products.

Table 15 - Imports of goods from selected markets

Preliminary data version of january to march 2011

| Country of Origin | Extra-EU (Cif) | | values in Millions of Euros | | | | | |
|------------------------|----------------|--------------|-----------------------------|--------------|--------------|--------------|----------------|------------|
| | jan-mar | | Structure (%) | | | | y.o.y., % | |
| | 2010 | 2011 | Annual | | jan-mar | | Last 12 months | jan-mar |
| | | | 2005 | 2010 | 2010 | 2011 | [1] | 11/10 |
| EXTRA EU(27) | 3 243 | 3 538 | 100,0 | 100,0 | 100,0 | 100,0 | 19,9 | 9,1 |
| of which: | | | | | | | | |
| China | 361 | 370 | 4,9 | 11,4 | 11,1 | 10,5 | 31,6 | 2,7 |
| Nigeria | 206 | 437 | 8,4 | 9,9 | 6,4 | 12,4 | 29,6 | 112,0 |
| Brazil | 221 | 256 | 8,5 | 7,6 | 6,8 | 7,2 | 10,7 | 16,0 |
| United States | 240 | 312 | 9,3 | 6,1 | 7,4 | 8,8 | 2,2 | 30,3 |
| Libyan Arab Jamahiriya | 177 | 14 | 2,6 | 5,3 | 5,5 | 0,4 | 27,5 | -92,4 |
| Kazakhstan | 152 | 164 | 2,2 | 4,6 | 4,7 | 4,6 | 134,9 | 7,8 |
| Angola | 214 | 208 | 0,2 | 4,1 | 6,6 | 5,9 | 72,3 | -3,0 |
| Norway | 170 | 66 | 4,6 | 3,8 | 5,2 | 1,9 | -24,0 | -61,4 |
| Saudi Arabia | 112 | 179 | 3,7 | 3,8 | 3,4 | 5,1 | 44,6 | 60,5 |
| Russian Federation | 75 | 106 | 3,3 | 3,0 | 2,3 | 3,0 | -17,7 | 41,4 |
| India | 93 | 161 | 1,8 | 3,0 | 2,9 | 4,6 | 66,2 | 72,7 |
| Switzerland | 86 | 87 | 2,8 | 2,7 | 2,7 | 2,4 | 8,0 | 0,7 |
| Japan | 79 | 96 | 5,1 | 2,6 | 2,4 | 2,7 | 41,9 | 21,4 |
| Turkey | 73 | 32 | 3,1 | 2,3 | 2,3 | 0,9 | -3,5 | -56,6 |
| Memo: | | | | | | | | |
| OPEC ^[2] | 899 | 1 112 | 29,3 | 28,0 | 27,7 | 31,4 | 23,0 | 23,7 |
| EFTA | 258 | 156 | 7,7 | 6,6 | 7,9 | 4,4 | -12,1 | -39,4 |
| ACPOL ^[3] | 218 | 214 | 0,6 | 4,3 | 6,7 | 6,0 | 59,6 | -2,2 |

Source: GEE, based on data on International Trade statistics from Statistics Portugal (new data series for 1993-2009; provisional version for 2010 and preliminary for 2011).

Notes:

Countries ranked in descending order of value in 2010.

[1] (apr 10-mar 11)/(apr 09-mar 10) x 100 - 100

[2] Includes Angola.

[3] African Countries of Portuguese Official Language

By geographical and economic areas

**Table 16 - Portuguese International trade
by geographical and economic areas (Intra + Extra-EU)**

Period of assessment: january to march

| Geographic/Economic Areas | | IMPORTS (Cif) ^[1] | | | | EXPORTS (Fob) ^[2] | | | | Coverage (fob/cif) 2011 | Trade Balance (fob-cif) | |
|-----------------------------|---------------------------|------------------------------|-------------------|------------------------|----------------------|------------------------------|-------------------|------------------------|----------------------|-------------------------------|-------------------------|-------------------|
| | | 2010 | 2011 | Rate of Change % | Struct. 2011 % | 2010 | 2011 | Rate of Change % | Struct. 2011 % | | 2010 | 2011 |
| Cod | Main Countries | | | | | | | | | | | |
| WORLD | | 13 272 724 | 14 403 463 | 8,5 | 100,0 | 8 659 448 | 10 132 589 | 17,0 | 100,0 | 70,3 | -4 613 275 | -4 270 874 |
| INTRA EU (27) | | 10 029 572 | 10 865 075 | 8,3 | 75,4 | 6 558 971 | 7 739 303 | 18,0 | 76,4 | 71,2 | -3 470 601 | -3 125 772 |
| 001 | FR France | 1 028 623 | 1 051 095 | 2,2 | 7,3 | 1 074 622 | 1 308 555 | 21,8 | 12,9 | 124,5 | 45 999 | 257 460 |
| 003 | NL Netherlands | 780 153 | 750 139 | -3,8 | 5,2 | 320 230 | 409 751 | 28,0 | 4,0 | 54,6 | -459 923 | -340 388 |
| 004 | DE Germany | 1 580 292 | 1 890 347 | 19,6 | 13,1 | 1 106 101 | 1 418 485 | 28,2 | 14,0 | 75,0 | -474 191 | -471 861 |
| 005 | IT Italy | 858 797 | 765 892 | -10,8 | 5,3 | 343 876 | 408 960 | 18,9 | 4,0 | 53,4 | -514 921 | -356 931 |
| 006 | GB United Kingdom | 482 753 | 488 962 | 1,3 | 3,4 | 484 217 | 517 810 | 6,9 | 5,1 | 105,9 | 1 464 | 28 848 |
| 007 | IE Ireland | 107 811 | 126 640 | 17,5 | 0,9 | 20 051 | 31 048 | 54,8 | 0,3 | 24,5 | -87 760 | -95 592 |
| 008 | DK Denmark | 75 652 | 77 335 | 2,2 | 0,5 | 62 438 | 65 204 | 4,4 | 0,6 | 84,3 | -13 213 | -12 131 |
| 009 | GR Greece | 24 161 | 35 681 | 47,7 | 0,2 | 25 814 | 29 032 | 12,5 | 0,3 | 81,4 | 1 653 | -6 649 |
| 011 | ES Spain | 4 129 123 | 4 612 613 | 11,7 | 32,0 | 2 352 980 | 2 639 843 | 12,2 | 26,1 | 57,2 | -1 776 143 | -1 972 770 |
| 017 | BE Belgium | 375 750 | 414 062 | 10,2 | 2,9 | 269 314 | 287 742 | 6,8 | 2,8 | 69,5 | -106 436 | -126 320 |
| 018 | LU Luxembourg | 16 045 | 18 855 | 17,5 | 0,1 | 12 096 | 15 488 | 28,0 | 0,2 | 82,1 | -3 949 | -3 367 |
| 030 | SE Sweden | 149 209 | 149 017 | -0,1 | 1,0 | 92 572 | 113 997 | 23,1 | 1,1 | 76,5 | -56 638 | -35 020 |
| 032 | FI Finland | 40 854 | 38 751 | -5,1 | 0,3 | 27 935 | 62 407 | 123,4 | 0,6 | 161,0 | -12 919 | 23 656 |
| 038 | AT Austria | 69 851 | 68 506 | -1,9 | 0,5 | 47 859 | 51 172 | 6,9 | 0,5 | 74,7 | -21 992 | -17 334 |
| 046 | MT Malta | 4 594 | 5 448 | 18,6 | 0,0 | 2 589 | 4 440 | 71,5 | 0,0 | 81,5 | -2 005 | -1 007 |
| 053 | EE Estonia | 1 809 | 1 244 | -31,2 | 0,0 | 2 748 | 2 915 | 6,1 | 0,0 | 234,3 | 939 | 1 671 |
| 054 | LV Latvia | 322 | 498 | 54,8 | 0,0 | 1 378 | 1 103 | -20,0 | 0,0 | 221,5 | 1 057 | 605 |
| 055 | LT Lithuania | 7 107 | 28 941 | 307,2 | 0,2 | 3 828 | 5 580 | 45,8 | 0,1 | 19,3 | -3 279 | -23 361 |
| 060 | PL Poland | 91 298 | 97 734 | 7,0 | 0,7 | 77 279 | 82 245 | 6,4 | 0,8 | 84,2 | -14 018 | -15 489 |
| 061 | CZ Czech Republic | 77 749 | 92 366 | 18,8 | 0,6 | 56 350 | 66 511 | 18,0 | 0,7 | 72,0 | -21 399 | -25 855 |
| 063 | SK Slovakia | 21 335 | 26 134 | 22,5 | 0,2 | 16 541 | 21 020 | 27,1 | 0,2 | 80,4 | -4 793 | -5 114 |
| 064 | HU Hungary | 71 447 | 58 987 | -17,4 | 0,4 | 24 350 | 30 194 | 24,0 | 0,3 | 51,2 | -47 096 | -28 793 |
| 066 | RO Romania | 20 810 | 28 899 | 38,9 | 0,2 | 40 953 | 52 042 | 27,1 | 0,5 | 180,1 | 20 143 | 23 143 |
| 068 | BG Bulgaria | 6 734 | 26 778 | 297,6 | 0,2 | 14 790 | 4 553 | -69,2 | 0,0 | 17,0 | 8 056 | -22 225 |
| 091 | SI Slovenia | 6 954 | 9 794 | 40,8 | 0,1 | 4 410 | 5 399 | 22,4 | 0,1 | 55,1 | -2 544 | -4 395 |
| 600 | CY Cyprus | 337 | 300 | -10,9 | 0,0 | 6 714 | 10 320 | 53,7 | 0,1 | 3435,8 | 6 377 | 10 020 |
| | OTHERS | 4 | 59 | 1478,8 | 0,0 | 66 936 | 93 487 | 39,7 | 0,9 | 157991,5 | 66 932 | 93 428 |
| EXTRA EU (27) | | 3 243 152 | 3 538 388 | 9,1 | 24,6 | 2 100 477 | 2 393 286 | 13,9 | 23,6 | 67,6 | -1 142 675 | -1 145 102 |
| of which: | | | | | | | | | | | | |
| 1-EUROPE | | 455 688 | 356 940 | -21,7 | 2,5 | 268 301 | 264 398 | -1,5 | 2,6 | 74,1 | -187 386 | -92 542 |
| EFTA | | 257 803 | 156 113 | -39,4 | 1,1 | 99 880 | 114 007 | 14,1 | 1,1 | 73,0 | -157 923 | -42 107 |
| 024 | IS Iceland | 1 623 | 3 623 | 123,2 | 0,0 | 1 113 | 805 | -27,6 | 0,0 | 22,2 | -511 | -2 818 |
| 028 | NO Norway | 170 144 | 65 650 | -61,4 | 0,5 | 21 843 | 21 920 | 0,4 | 0,2 | 33,4 | -148 301 | -43 730 |
| 039 | CH Switzerland | 85 963 | 86 543 | 0,7 | 0,6 | 76 902 | 91 236 | 18,6 | 0,9 | 105,4 | -9 061 | 4 692 |
| OTHERS | | 197 884 | 200 827 | 1,5 | 1,4 | 168 422 | 150 391 | -10,7 | 1,5 | 74,9 | -29 463 | -50 436 |
| 052 | TR Turkey | 73 342 | 31 797 | -56,6 | 0,2 | 58 356 | 76 934 | 31,8 | 0,8 | 242,0 | -14 986 | 45 138 |
| 075 | RU Russian Federation | 74 983 | 106 055 | 41,4 | 0,7 | 31 205 | 27 906 | -10,6 | 0,3 | 26,3 | -43 778 | -78 150 |
| 092 | HR Croatia | 884 | 790 | -10,7 | 0,0 | 3 936 | 2 787 | -29,2 | 0,0 | 352,9 | 3 052 | 1 997 |
| 2-AFRICA | | 972 633 | 994 970 | 2,3 | 6,9 | 807 583 | 931 290 | 15,3 | 9,2 | 93,6 | -165 050 | -63 680 |
| MAGHREB | | 156 418 | 239 247 | 53,0 | 1,7 | 131 242 | 200 098 | 52,5 | 2,0 | 83,6 | -25 176 | -39 148 |
| 204 | MA Morocco | 23 430 | 34 184 | 45,9 | 0,2 | 55 189 | 81 745 | 48,1 | 0,8 | 239,1 | 31 758 | 47 561 |
| 208 | DZ Algeria | 126 277 | 198 806 | 57,4 | 1,4 | 47 436 | 85 705 | 80,7 | 0,8 | 43,1 | -78 841 | -113 101 |
| 212 | TN Tunisia | 6 711 | 6 256 | -6,8 | 0,0 | 28 617 | 32 648 | 14,1 | 0,3 | 521,9 | 21 906 | 26 392 |
| ACPOL ^[3] | | 218 405 | 213 625 | -2,2 | 1,5 | 552 776 | 609 775 | 10,3 | 6,0 | 285,4 | 334 370 | 396 150 |
| 247 | CV Cape Verde | 2 125 | 2 504 | 17,8 | 0,0 | 58 557 | 66 509 | 13,6 | 0,7 | 2655,8 | 56 432 | 64 005 |
| 257 | GW Guinea-Bissau | 177 | 111 | -37,5 | 0,0 | 7 881 | 12 479 | 58,3 | 0,1 | 11264,6 | 7 704 | 12 368 |
| 311 | ST Sao Tome and Principe | 122 | 38 | -68,8 | 0,0 | 8 326 | 9 016 | 8,3 | 0,1 | 23608,9 | 8 204 | 8 978 |
| 330 | AO Angola | 214 142 | 207 727 | -3,0 | 1,4 | 448 159 | 483 270 | 7,8 | 4,8 | 232,6 | 234 017 | 275 543 |
| 366 | MZ Mozambique | 1 838 | 3 244 | 76,5 | 0,0 | 29 853 | 38 501 | 29,0 | 0,4 | 1186,6 | 28 015 | 35 256 |
| OTHERS | | 597 810 | 542 098 | -9,3 | 3,8 | 123 566 | 121 417 | -1,7 | 1,2 | 22,4 | -474 244 | -420 681 |
| 216 | LY Libyan Arab Jamahiriya | 177 289 | 13 523 | -92,4 | 0,1 | 12 061 | 7 237 | -40,0 | 0,1 | 53,5 | -165 229 | -6 287 |
| 220 | EG Egypt | 10 081 | 25 153 | 149,5 | 0,2 | 17 662 | 15 609 | -11,6 | 0,2 | 62,1 | 7 580 | -9 543 |
| 272 | CI Côte d'Ivoire | 5 962 | 3 713 | -37,7 | 0,0 | 4 291 | 1 917 | -55,3 | 0,0 | 51,6 | -1 671 | -1 797 |
| 288 | NG Nigeria | 206 163 | 437 155 | 112,0 | 3,0 | 25 109 | 9 262 | -63,1 | 0,1 | 2,1 | -181 054 | -427 893 |
| 388 | ZA South Africa | 42 481 | 17 574 | -58,6 | 0,1 | 16 431 | 18 632 | 13,4 | 0,2 | 106,0 | -26 050 | 1 058 |

(continues)

Period of assessment: January to March

| Geographic/Economic Areas Main Countries | | IMPORTS (Cif) ^[1] | | | | EXPORTS (Fob) ^[2] | | | | Coverage (fob/cif) 2011 | Trade Balance (fob-cif) | |
|---|---|------------------------------|------------------|-------------------|-----------------|------------------------------|----------------|-------------------|-----------------|-------------------------------|-------------------------|-----------------|
| | | 2010 | 2011 | Rate of Change | Struct. 2011 | 2010 | 2011 | Rate of Change | Struct. 2011 | | 2010 | 2011 |
| Cod | | | | | | | | | | | | |
| 3-AMERICA | | 739 247 | 886 605 | 19,9 | 6,2 | 660 009 | 705 332 | 6,9 | 7,0 | 79,6 | -79 238 | -181 273 |
| NAFTA | | 397 820 | 458 310 | 15,2 | 3,2 | 465 258 | 479 700 | 3,1 | 4,7 | 104,7 | 67 438 | 21 390 |
| 400 | US United States | 239 548 | 312 020 | 30,3 | 2,2 | 356 558 | 340 295 | -4,6 | 3,4 | 109,1 | 117 010 | 28 275 |
| 404 | CA Canada | 97 996 | 62 150 | -36,6 | 0,4 | 55 302 | 57 979 | 4,8 | 0,6 | 93,3 | -42 694 | -4 171 |
| 412 | MX Mexico | 60 276 | 84 140 | 39,6 | 0,6 | 53 398 | 81 425 | 52,5 | 0,8 | 96,8 | -6 878 | -2 714 |
| MERCOSUL | | 255 860 | 296 990 | 16,1 | 2,1 | 99 158 | 153 042 | 54,3 | 1,5 | 51,5 | -156 702 | -143 948 |
| 508 | BR Brazil | 220 750 | 256 107 | 16,0 | 1,8 | 85 484 | 137 026 | 60,3 | 1,4 | 53,5 | -135 266 | -119 081 |
| 528 | AR Argentina | 16 889 | 30 820 | 82,5 | 0,2 | 12 802 | 13 807 | 7,9 | 0,1 | 44,8 | -4 087 | -17 013 |
| OTHERS | | 85 567 | 131 306 | 53,5 | 0,9 | 95 593 | 72 591 | -24,1 | 0,7 | 55,3 | 10 026 | -58 715 |
| 424 | HN Honduras | 1 647 | 1 831 | 11,2 | 0,0 | 311 | 503 | 62,0 | 0,0 | 27,5 | -1 336 | -1 328 |
| 436 | CR Costa Rica | 16 351 | 14 555 | -11,0 | 0,1 | 1 464 | 1 815 | 24,0 | 0,0 | 12,5 | -14 887 | -12 740 |
| 448 | CU Cuba | 1 276 | 996 | -22,0 | 0,0 | 3 069 | 7 650 | 149,3 | 0,1 | 768,0 | 1 792 | 6 654 |
| 480 | CO Colombia | 31 583 | 55 639 | 76,2 | 0,4 | 2 172 | 2 768 | 27,5 | 0,0 | 5,0 | -29 411 | -52 871 |
| 484 | VE Venezuela | 1 197 | 722 | -39,7 | 0,0 | 33 974 | 23 190 | -31,7 | 0,2 | 3213,0 | 32 778 | 22 468 |
| 500 | EC Ecuador | 6 234 | 6 173 | -1,0 | 0,0 | 1 038 | 2 987 | 187,6 | 0,0 | 48,4 | -5 196 | -3 186 |
| 512 | CL Chile | 9 858 | 22 666 | 129,9 | 0,2 | 21 106 | 19 275 | -8,7 | 0,2 | 85,0 | 11 248 | -3 390 |
| 4-ASIA | | 1 066 690 | 1 278 908 | 19,9 | 8,9 | 254 100 | 349 522 | 37,6 | 3,4 | 27,3 | -812 590 | -929 386 |
| MIDDLE EAST | | 169 115 | 245 122 | 44,9 | 1,7 | 87 871 | 105 205 | 19,7 | 1,0 | 42,9 | -81 244 | -139 917 |
| 612 | IQ Iraq | 0 | 0 | 0,0 | 0,0 | 597 | 234 | -60,8 | 0,0 | 0,0 | 597 | 234 |
| 616 | IR Iran, Islamic Republic of | 33 994 | 883 | -97,4 | 0,0 | 9 356 | 9 836 | 5,1 | 0,1 | 1113,8 | -24 638 | 8 953 |
| 624 | IL Israel | 16 958 | 24 873 | 46,7 | 0,2 | 14 146 | 20 801 | 47,0 | 0,2 | 83,6 | -2 812 | -4 073 |
| 632 | SA Saudi Arabia | 111 686 | 179 254 | 60,5 | 1,2 | 18 678 | 27 669 | 48,1 | 0,3 | 15,4 | -93 008 | -151 585 |
| 647 | AE United Arab Emirates | 942 | 19 223 | 1941,0 | 0,1 | 20 580 | 20 840 | 1,3 | 0,2 | 108,4 | 19 638 | 1 617 |
| ASEAN | | 91 166 | 123 199 | 35,1 | 0,9 | 23 453 | 27 409 | 16,9 | 0,3 | 22,2 | -67 714 | -95 790 |
| 680 | TH Thailand | 24 582 | 30 347 | 23,5 | 0,2 | 3 647 | 3 830 | 5,0 | 0,0 | 12,6 | -20 936 | -26 517 |
| 700 | ID Indonesia | 20 550 | 32 701 | 59,1 | 0,2 | 1 887 | 1 282 | -32,0 | 0,0 | 3,9 | -18 663 | -31 419 |
| 701 | MY Malaysia | 23 506 | 28 000 | 19,1 | 0,2 | 3 176 | 3 233 | 1,8 | 0,0 | 11,5 | -20 330 | -24 767 |
| 706 | SG Singapore | 5 893 | 6 703 | 13,8 | 0,0 | 11 689 | 14 730 | 26,0 | 0,1 | 219,8 | 5 796 | 8 027 |
| 708 | PH Philippines | 4 000 | 4 055 | 1,4 | 0,0 | 577 | 1 139 | 97,3 | 0,0 | 28,1 | -3 423 | -2 916 |
| OTHERS | | 806 409 | 910 587 | 12,9 | 6,3 | 142 776 | 216 907 | 51,9 | 2,1 | 23,8 | -663 632 | -693 679 |
| 626 | TL Timor-Leste | 263 | 211 | -19,7 | 0,0 | 989 | 1 031 | 4,3 | 0,0 | 488,0 | 726 | 820 |
| 662 | PK Pakistan | 20 618 | 25 523 | 23,8 | 0,2 | 2 363 | 4 726 | 100,0 | 0,0 | 18,5 | -18 255 | -20 798 |
| 664 | IN India | 93 235 | 161 008 | 72,7 | 1,1 | 9 081 | 26 351 | 190,2 | 0,3 | 16,4 | -84 153 | -134 657 |
| 720 | CN China | 360 761 | 370 345 | 2,7 | 2,6 | 55 489 | 79 343 | 43,0 | 0,8 | 21,4 | -305 273 | -291 002 |
| 728 | KR Korea, Republic of | 56 863 | 47 673 | -16,2 | 0,3 | 12 355 | 12 307 | -0,4 | 0,1 | 25,8 | -44 507 | -35 366 |
| 732 | JP Japan | 78 688 | 95 558 | 21,4 | 0,7 | 25 003 | 46 941 | 87,7 | 0,5 | 49,1 | -53 685 | -31 616 |
| 736 | TW Taiwan | 28 217 | 26 214 | -7,1 | 0,2 | 4 131 | 16 976 | 310,9 | 0,2 | 64,8 | -24 086 | -9 238 |
| 740 | HK Hong Kong | 7 101 | 7 226 | 1,8 | 0,1 | 28 211 | 23 397 | -17,1 | 0,2 | 323,8 | 21 110 | 16 171 |
| 743 | MO Macao | 84 | 10 | -88,6 | 0,0 | 3 357 | 3 437 | 2,4 | 0,0 | 35864,8 | 3 273 | 3 427 |
| 5-AUSTR,OC,P. REG | | 8 695 | 9 073 | 4,3 | 0,1 | 18 897 | 19 130 | 1,2 | 0,2 | 210,9 | 10 202 | 10 058 |
| 800 | AU Australia | 4 103 | 1 849 | -54,9 | 0,0 | 14 212 | 16 032 | 12,8 | 0,2 | 867,0 | 10 109 | 14 183 |
| 804 | NZ New Zealand | 4 421 | 7 033 | 59,1 | 0,0 | 1 516 | 2 828 | 86,5 | 0,0 | 40,2 | -2 904 | -4 204 |
| 6-OTHERS | | 199 | 11 893 | 5871,6 | 0,1 | 91 586 | 123 614 | 35,0 | 1,2 | 1039,4 | 91 386 | 111 722 |
| 952 | QS Stores and provisions (Extra EU) | 0 | 0 | 0,0 | 0,0 | 82 427 | 111 727 | 35,5 | 1,1 | 0,0 | 82 427 | 111 727 |
| 960 | QW Countries/territories not specif. (Extra EU) | 199 | 11 893 | 5871,6 | 0,1 | 9 158 | 11 887 | 29,8 | 0,1 | 100,0 | 8 959 | -6 |

Memo:

| | | | | | | | | | | | |
|---------------------------|-----------|------------|-------|------|-----------|-----------|-------|------|-------|------------|------------|
| Intra EU-15 | 9 719 077 | 10 487 953 | 7,9 | 72,8 | 6 307 041 | 7 452 982 | 18,2 | 73,6 | 71,1 | -3 412 037 | -3 034 971 |
| Intra-enlargement | 310 494 | 377 121 | 21,5 | 2,6 | 251 931 | 286 321 | 13,7 | 2,8 | 75,9 | -58 564 | -90 800 |
| OECD (excl. EU) | 872 967 | 798 035 | -8,6 | 5,5 | 676 558 | 748 703 | 10,7 | 7,4 | 93,8 | -196 409 | -49 332 |
| OPEC | 899 436 | 1 112 169 | 23,7 | 7,7 | 624 635 | 675 852 | 8,2 | 6,7 | 60,8 | -274 802 | -436 318 |
| ACP ^[4] | 639 622 | 734 412 | 14,8 | 5,1 | 677 602 | 720 346 | 6,3 | 7,1 | 98,1 | 37 980 | -14 066 |
| CPLP ^[5] | 439 419 | 469 943 | 6,9 | 3,3 | 639 249 | 747 833 | 17,0 | 7,4 | 159,1 | 199 830 | 277 889 |
| CIS ^[6] | 263 509 | 317 722 | 20,6 | 2,2 | 37 884 | 37 171 | -1,9 | 0,4 | 11,7 | -225 625 | -280 551 |
| Mashrak | 12 069 | 26 818 | 122,2 | 0,2 | 33 873 | 33 560 | -0,9 | 0,3 | 125,1 | 21 804 | 6 742 |
| EUROMED | 258 787 | 322 734 | 24,7 | 2,2 | 237 617 | 331 394 | 39,5 | 3,3 | 102,7 | -21 170 | 8 659 |
| Latin American Count. | 392 835 | 496 073 | 26,3 | 3,4 | 224 030 | 305 279 | 36,3 | 3,0 | 61,5 | -168 805 | -190 794 |
| Cent. Amer. Common Market | 20 310 | 17 786 | -12,4 | 0,1 | 4 797 | 8 614 | 79,6 | 0,1 | 48,4 | -15 513 | -9 171 |
| Andean Community | 44 965 | 73 244 | 62,9 | 0,5 | 40 811 | 32 755 | -19,7 | 0,3 | 44,7 | -4 153 | -40 488 |
| ASEM (relac. Euro-Asia) | 701 331 | 823 307 | 17,4 | 5,7 | 127 744 | 197 078 | 54,3 | 1,9 | 23,9 | -573 587 | -626 228 |
| EDA (Econ Dinam Asian) | 146 161 | 146 163 | 0,0 | 1,0 | 63 209 | 74 474 | 17,8 | 0,7 | 51,0 | -82 952 | -71 690 |
| China+H. Kong+Macao | 367 947 | 377 581 | 2,6 | 2,6 | 87 056 | 106 176 | 22,0 | 1,0 | 28,1 | -280 890 | -271 405 |

Source: GEE, based on data on International Trade statistics from Statistics Portugal (new data series for 1993-2009; provisional version for 2010 and preliminary for 2011). Estimates for operators under the assimilation threshold and non-responses are included in Intra-EU trade.

Notes:

[1] Sum of Arrivals from EU and Imports from third countries.

[2] Sum of Dispatches to EU and Exports to third countries.

[3] African Countries of Portuguese Official Language

[4] African, Caribbean and Pacific Group of States

[5] Community of Portuguese Language Countries

[6] Commonwealth of Independent States

**Table 17 - International Trade of Portuguese goods
by geographical and economic areas (Intra + Extra-EU)
Imports [1] - Contributions of the main partners to the global growth rate**

Period of assessment: january to march

| Countries and regions | 1000 Euros | | | | Structure (%) | | Growth rates and contributions to growth ^[3] | | | |
|--|-------------------|-------------------|-------------------|-------------------|---------------|-------------------------------|---|------------------------------|---------------|------------------------------|
| | 2010 | jan-mar | | jan-mar | | Last 12 months ^[2] | | jan-mar | | |
| | | Rank. | 2010 | 2011 | 2010 | 2011 | y.o.y., % ^[2] | Contrib. p.p. ^[3] | y.o.y., % | Contrib. p.p. ^[3] |
| | WORLD | 57 053 115 | 13 272 724 | 14 403 463 | 100,00 | 100,00 | 10,90 | 10,90 | 8,52 | 8,52 |
| INTRA EU(27) | 43 204 547 | 10 029 572 | 10 865 075 | 75,57 | 75,43 | 8,29 | 6,43 | 8,33 | 6,29 | |
| 011 ES Spain | 17 808 554 | 1 | 4 129 123 | 4 612 613 | 31,11 | 32,02 | 7,18 | 2,33 | 11,71 | 3,64 |
| 004 DE Germany | 7 913 420 | 2 | 1 580 292 | 1 890 347 | 11,91 | 13,12 | 24,83 | 3,12 | 19,62 | 2,34 |
| 001 FR France | 4 138 028 | 3 | 1 028 623 | 1 051 095 | 7,75 | 7,30 | -2,81 | -0,23 | 2,18 | 0,17 |
| 005 IT Italy | 3 244 804 | 4 | 858 797 | 765 892 | 6,47 | 5,32 | -0,24 | -0,01 | -10,82 | -0,70 |
| 003 NL Netherlands | 2 932 135 | 5 | 780 153 | 750 139 | 5,88 | 5,21 | 4,15 | 0,22 | -3,85 | -0,23 |
| 006 GB United Kingdom | 2 152 560 | 6 | 482 753 | 488 962 | 3,64 | 3,39 | 22,21 | 0,75 | 1,29 | 0,05 |
| 017 BE Belgium | 1 626 441 | 7 | 375 750 | 414 062 | 2,83 | 2,87 | 13,29 | 0,37 | 10,20 | 0,29 |
| 030 SE Sweden | 588 670 | 14 | 149 209 | 149 017 | 1,12 | 1,03 | 9,15 | 0,09 | -0,13 | 0,00 |
| 007 IE Ireland | 547 762 | 16 | 107 811 | 126 640 | 0,81 | 0,88 | 11,31 | 0,11 | 17,46 | 0,14 |
| 061 CZ Czech Republic | 356 077 | 23 | 77 749 | 92 366 | 0,59 | 0,64 | 37,11 | 0,19 | 18,80 | 0,11 |
| 060 PL Poland | 353 417 | 24 | 91 298 | 97 734 | 0,69 | 0,68 | 3,85 | 0,03 | 7,05 | 0,05 |
| 008 DK Denmark | 314 621 | 26 | 75 652 | 77 335 | 0,57 | 0,54 | 6,19 | 0,04 | 2,22 | 0,01 |
| 038 AT Austria | 291 624 | 27 | 69 851 | 68 506 | 0,53 | 0,48 | -26,88 | -0,20 | -1,93 | -0,01 |
| 064 HU Hungary | 266 853 | 29 | 71 447 | 58 987 | 0,54 | 0,41 | -2,50 | -0,01 | -17,44 | -0,09 |
| 032 FI Finland | 158 872 | 35 | 40 854 | 38 751 | 0,31 | 0,27 | -55,68 | -0,38 | -5,15 | -0,02 |
| 066 RO Romania | 120 947 | 39 | 20 810 | 28 899 | 0,16 | 0,20 | -15,89 | -0,05 | 38,87 | 0,06 |
| 009 GR Greece | 108 095 | 45 | 24 161 | 35 681 | 0,18 | 0,25 | 12,27 | 0,02 | 47,68 | 0,09 |
| 063 SK Slovakia | 107 989 | 46 | 21 335 | 26 134 | 0,16 | 0,18 | 14,96 | 0,03 | 22,49 | 0,04 |
| 018 LU Luxembourg | 49 765 | 59 | 16 045 | 18 855 | 0,12 | 0,13 | -39,72 | -0,07 | 17,51 | 0,02 |
| 091 SI Slovenia | 34 937 | 62 | 6 954 | 9 794 | 0,05 | 0,07 | 34,22 | 0,02 | 40,84 | 0,02 |
| 055 LT Lithuania | 26 555 | 68 | 7 107 | 28 941 | 0,05 | 0,20 | 10,26 | 0,01 | 307,23 | 0,16 |
| 068 BG Bulgaria | 26 212 | 69 | 6 734 | 26 778 | 0,05 | 0,19 | 74,51 | 0,04 | 297,65 | 0,15 |
| 046 MT Malta | 22 544 | 74 | 4 594 | 5 448 | 0,03 | 0,04 | 40,62 | 0,01 | 18,58 | 0,01 |
| 053 EE Estonia | 8 815 | 97 | 1 809 | 1 244 | 0,01 | 0,01 | -15,80 | 0,00 | -31,24 | 0,00 |
| 054 LV Latvia | 3 484 | 111 | 322 | 498 | 0,00 | 0,00 | 4,07 | 0,00 | 54,78 | 0,00 |
| 600 CY Cyprus | 1 287 | 125 | 337 | 300 | 0,00 | 0,00 | -14,86 | 0,00 | -10,89 | 0,00 |
| OTHERS | 80 | | 4 | 59 | 0,00 | 0,00 | 1255 | 0,00 | 1479 | 0,00 |
| EXTRA EU(27) | 13 848 568 | | 3 243 152 | 3 538 388 | 24,43 | 24,57 | 19,89 | 4,47 | 9,10 | 2,22 |
| of which: | | | | | | | | | | |
| 1-EUROPE | 1 808 818 | | 455 688 | 356 940 | 3,43 | 2,48 | -11,26 | -0,41 | -21,67 | -0,74 |
| EFTA | 914 028 | | 257 803 | 156 113 | 1,94 | 1,08 | -12,07 | -0,21 | -39,44 | -0,77 |
| 028 NO Norway | 529 759 | 17 | 170 144 | 65 650 | 1,28 | 0,46 | -23,96 | -0,26 | -61,42 | -0,79 |
| 039 CH Switzerland | 370 217 | 21 | 85 963 | 86 543 | 0,65 | 0,60 | 8,01 | 0,05 | 0,67 | 0,00 |
| 024 IS Iceland | 13 654 | 88 | 1 623 | 3 623 | 0,01 | 0,03 | -14,48 | -0,01 | 123,16 | 0,02 |
| OTHERS | 894 790 | | 197 884 | 200 827 | 1,49 | 1,39 | -10,52 | -0,20 | 1,49 | 0,02 |
| 075 RU Russian Federation | 413 407 | 19 | 74 983 | 106 055 | 0,56 | 0,74 | -17,74 | -0,18 | 41,44 | 0,23 |
| 052 TR Turkey | 321 445 | 25 | 73 342 | 31 797 | 0,55 | 0,22 | -3,54 | -0,02 | -56,65 | -0,31 |
| 072 UA Ukraine | 118 124 | 40 | 32 466 | 38 327 | 0,24 | 0,27 | 54,74 | 0,08 | 18,05 | 0,04 |
| 096 MK Former Yugoslav Republic of Macedonia | 18 088 | 80 | 4 226 | 10 010 | 0,03 | 0,07 | 37,70 | 0,01 | 136,89 | 0,04 |
| 2-AFRICA | 3 886 408 | | 972 633 | 994 970 | 7,33 | 6,91 | 18,80 | 1,18 | 2,30 | 0,17 |
| MAGHREB | 490 746 | | 156 418 | 239 247 | 1,18 | 1,66 | 32,93 | 0,27 | 52,95 | 0,62 |
| 208 DZ Algeria | 269 373 | 28 | 126 277 | 198 806 | 0,95 | 1,38 | 0,72 | 0,00 | 57,44 | 0,55 |
| 212 TN Tunisia | 111 711 | 42 | 6 711 | 6 256 | 0,05 | 0,04 | 432,11 | 0,17 | -6,78 | 0,00 |
| 204 MA Morocco | 109 662 | 43 | 23 430 | 34 184 | 0,18 | 0,24 | 69,28 | 0,09 | 45,90 | 0,08 |
| ACPOL ^[4] | 600 796 | | 218 405 | 213 625 | 1,65 | 1,48 | 59,62 | 0,42 | -2,19 | -0,04 |
| 330 AO Angola | 563 452 | 15 | 214 142 | 207 727 | 1,61 | 1,44 | 72,25 | 0,45 | -3,00 | -0,05 |
| 366 MZ Mozambique | 29 184 | 66 | 1 838 | 3 244 | 0,01 | 0,02 | -26,11 | -0,02 | 76,48 | 0,01 |
| 247 CV Cape Verde | 7 476 | 101 | 2 125 | 2 504 | 0,02 | 0,02 | 17,01 | 0,00 | 17,83 | 0,00 |
| 257 GW Guinea-Bissau | 389 | 145 | 177 | 111 | 0,00 | 0,00 | -77,56 | 0,00 | -37,47 | 0,00 |
| 311 ST Sao Tome and Principe | 295 | 147 | 122 | 38 | 0,00 | 0,00 | -54,66 | 0,00 | -68,80 | 0,00 |
| OTHERS | 2 794 866 | | 597 810 | 542 098 | 4,50 | 3,76 | 10,21 | 0,48 | -9,32 | -0,42 |
| 288 NG Nigeria | 1 377 419 | 9 | 206 163 | 437 155 | 1,55 | 3,04 | 29,56 | 0,70 | 112,04 | 1,74 |
| 216 LY Libyan Arab Jamahiriya | 737 820 | 12 | 177 289 | 13 523 | 1,34 | 0,09 | 27,52 | 0,24 | -92,37 | -1,23 |
| 310 GQ Equatorial Guinea | 178 319 | 33 | 85 414 | 58 | 0,64 | 0,00 | -61,97 | -0,29 | -99,93 | -0,64 |
| 388 ZA South Africa | 141 103 | 38 | 42 481 | 17 574 | 0,32 | 0,12 | -22,31 | -0,06 | -58,63 | -0,19 |
| 220 EG Egypt | 75 509 | 54 | 10 081 | 25 153 | 0,08 | 0,17 | 75,25 | 0,07 | 149,49 | 0,11 |
| 3-AMERICA | 3 066 620 | | 739 247 | 886 605 | 5,57 | 6,16 | 16,18 | 0,85 | 19,93 | 1,11 |
| NAFTA | 1 245 863 | | 397 820 | 458 310 | 3,00 | 3,18 | 9,90 | 0,22 | 15,21 | 0,46 |
| 400 US United States | 843 348 | 11 | 239 548 | 312 020 | 1,80 | 2,17 | 2,17 | 0,04 | 30,25 | 0,55 |
| 404 CA Canada | 226 352 | 32 | 97 996 | 62 150 | 0,74 | 0,43 | 0,20 | 0,00 | -36,58 | -0,27 |
| 412 MX Mexico | 176 162 | 34 | 60 276 | 84 140 | 0,45 | 0,58 | 95,77 | 0,19 | 39,59 | 0,18 |

(continues)

Period of assessment: january to march

| Countries and regions | 1000 Euros | | | Structure (%) | | Growth rates and contributions to growth ⁽³⁾ | | | |
|---|------------------|------------------|------------------|----------------|-------------|---|--------------------------|------------------------------|--------------|
| | 2010 | jan-mar | | jan-mar | | Last 12 months ⁽²⁾ | | jan-mar | |
| | | Rank. | 2010 | 2011 | 2010 | 2011 | y.o.y., % ⁽²⁾ | Contrib. p.p. ⁽³⁾ | y.o.y., % |
| | MERCOSUL | 1 266 665 | 255 860 | 296 990 | 1,93 | 2,06 | 15,68 | 0,34 | 16,08 |
| 508 BR Brazil | 1 046 500 | 220 750 | 256 107 | 1,66 | 1,78 | 10,67 | 0,20 | 16,02 | 0,27 |
| 528 AR Argentina | 93 282 | 16 889 | 30 820 | 0,13 | 0,21 | -11,70 | -0,03 | 82,48 | 0,10 |
| OTHERS | 554 092 | 85 567 | 131 306 | 0,64 | 0,91 | 34,16 | 0,29 | 53,45 | 0,34 |
| 484 VE Venezuela | 147 043 | 1 197 | 722 | 0,01 | 0,01 | 29,31 | 0,06 | -39,69 | 0,00 |
| 480 CO Colombia | 100 562 | 31 583 | 55 639 | 0,24 | 0,39 | 21,79 | 0,04 | 76,17 | 0,18 |
| 512 CL Chile | 80 647 | 9 858 | 22 666 | 0,07 | 0,16 | 117,49 | 0,10 | 129,92 | 0,10 |
| 436 CR Costa Rica | 53 818 | 16 351 | 14 555 | 0,12 | 0,10 | -2,12 | 0,00 | -10,99 | -0,01 |
| 488 GY Guyana | 43 936 | 5 912 | 6 344 | 0,04 | 0,04 | 125,67 | 0,05 | 7,31 | 0,00 |
| 472 TT Trinidad and Tobago | 34 269 | 2 682 | 3 594 | 0,02 | 0,02 | 19,75 | 0,01 | 33,99 | 0,01 |
| 4-ASIA | 5 021 977 | 1 066 690 | 1 278 908 | 8,04 | 8,88 | 38,53 | 2,77 | 19,89 | 1,60 |
| MIDDLE EAST | 1 081 238 | 169 115 | 245 122 | 1,27 | 1,70 | 31,53 | 0,53 | 44,94 | 0,57 |
| 632 SA Saudi Arabia | 527 409 | 111 686 | 179 254 | 0,84 | 1,24 | 44,58 | 0,35 | 60,50 | 0,51 |
| 078 AZ Azerbaijan | 251 778 | 0 | 0 | 0,00 | 0,00 | 734609,89 | 0,48 | 0,00 | 0,00 |
| 616 IR Iran, Islamic Republic of | 108 821 | 33 994 | 883 | 0,26 | 0,01 | -59,88 | -0,22 | -97,40 | -0,25 |
| 624 IL Israel | 84 815 | 16 958 | 24 873 | 0,13 | 0,17 | 14,17 | 0,02 | 46,67 | 0,06 |
| 636 KW Kuwait | 27 415 | 410 | 652 | 0,00 | 0,00 | 167,51 | 0,03 | 58,79 | 0,00 |
| 647 AE United Arab Emirates | 22 664 | 942 | 19 223 | 0,01 | 0,13 | 149,21 | 0,05 | 1941,01 | 0,14 |
| 640 BH Bahrain | 22 631 | 38 | 99 | 0,00 | 0,00 | 3591,44 | 0,04 | 162,33 | 0,00 |
| ASEAN | 393 718 | 91 166 | 123 199 | 0,69 | 0,86 | 18,62 | 0,13 | 35,14 | 0,24 |
| 680 TH Thailand | 113 078 | 24 582 | 30 347 | 0,19 | 0,21 | 19,53 | 0,04 | 23,45 | 0,04 |
| 701 MY Malaysia | 103 358 | 23 506 | 28 000 | 0,18 | 0,19 | 11,83 | 0,02 | 19,12 | 0,03 |
| 690 VN Viet-Nam | 63 979 | 12 481 | 20 068 | 0,09 | 0,14 | 38,89 | 0,04 | 60,79 | 0,06 |
| 700 ID Indonesia | 63 887 | 20 550 | 32 701 | 0,15 | 0,23 | -4,45 | -0,01 | 59,13 | 0,09 |
| 706 SG Singapore | 31 037 | 5 893 | 6 703 | 0,04 | 0,05 | 66,89 | 0,02 | 13,75 | 0,01 |
| OTHERS | 3 547 020 | 806 409 | 910 587 | 6,08 | 6,32 | 43,77 | 2,12 | 12,92 | 0,78 |
| 720 CN China | 1 576 303 | 360 761 | 370 345 | 2,72 | 2,57 | 31,64 | 0,73 | 2,66 | 0,07 |
| 079 KZ Kazakhstan | 640 251 | 152 176 | 163 985 | 1,15 | 1,14 | 134,92 | 0,71 | 7,76 | 0,09 |
| 664 IN India | 411 181 | 93 235 | 161 008 | 0,70 | 1,12 | 66,24 | 0,36 | 72,69 | 0,51 |
| 732 JP Japan | 362 768 | 78 688 | 95 558 | 0,59 | 0,66 | 41,86 | 0,21 | 21,44 | 0,13 |
| 728 KR Korea, Republic of | 247 234 | 56 863 | 47 673 | 0,43 | 0,33 | -7,57 | -0,04 | -16,16 | -0,07 |
| 736 TW Taiwan | 145 556 | 28 217 | 26 214 | 0,21 | 0,18 | 50,71 | 0,09 | -7,10 | -0,02 |
| 662 PK Pakistan | 80 172 | 20 618 | 25 523 | 0,16 | 0,18 | 2,82 | 0,00 | 23,79 | 0,04 |
| 740 HK Hong Kong | 34 195 | 7 101 | 7 226 | 0,05 | 0,05 | 17,37 | 0,01 | 1,76 | 0,00 |
| 666 BD Bangladesh | 24 904 | 4 467 | 6 662 | 0,03 | 0,05 | 30,75 | 0,01 | 49,16 | 0,02 |
| 081 UZ Uzbekistan | 15 542 | 2 429 | 3 191 | 0,02 | 0,02 | 63,99 | 0,01 | 31,37 | 0,01 |
| 5-AUSTR, OC, P. REG | 31 167 | 8 695 | 9 073 | 0,07 | 0,06 | -7,70 | -0,01 | 4,34 | 0,00 |
| 804 NZ New Zealand | 18 382 | 4 421 | 7 033 | 0,03 | 0,05 | 19,18 | 0,01 | 59,08 | 0,02 |
| 800 AU Australia | 12 252 | 4 103 | 1 849 | 0,03 | 0,01 | -37,23 | -0,01 | -54,93 | -0,02 |
| 801 PG Papua New Guinea | 452 | 166 | 167 | 0,00 | 0,00 | -9,40 | 0,00 | 0,90 | 0,00 |
| 6-OTHERS | 33 578 | 199 | 11 893 | 0,00 | 0,08 | 4294,75 | 0,08 | 5871,58 | 0,09 |
| 960 QW Countries/territories not specif. (Extra EU) | 33 578 | 199 | 11 893 | 0,00 | 0,08 | 4294,75 | 0,08 | 5871,58 | 0,09 |
| 952 QS Stores and provisions (Extra EU) | 0 | 0 | 0 | 0,00 | 0,00 | 0,00 | 0,00 | 0,00 | 0,00 |

Memo:

| | | | | | | | | | |
|---------------------------|------------|-----------|------------|-------|-------|--------|-------|--------|-------|
| Intra EU-15 | 41 875 430 | 9 719 077 | 10 487 953 | 73,23 | 72,82 | 8,21 | 6,17 | 7,91 | 5,79 |
| Intra-enlargement | 1 329 118 | 310 494 | 377 121 | 2,34 | 2,62 | 10,84 | 0,26 | 21,46 | 0,50 |
| OECD (excl. EU) | 3 121 575 | 872 967 | 798 035 | 6,58 | 5,54 | 2,98 | 0,17 | -8,58 | -0,56 |
| OPEC | 3 881 658 | 899 436 | 1 112 169 | 6,78 | 7,72 | 22,98 | 1,46 | 23,65 | 1,60 |
| ACP ⁽⁵⁾ | 2 691 095 | 639 622 | 734 412 | 4,82 | 5,10 | 14,38 | 0,67 | 14,82 | 0,71 |
| CPLP ⁽⁶⁾ | 1 648 415 | 439 419 | 469 943 | 3,31 | 3,26 | 24,19 | 0,62 | 6,95 | 0,23 |
| CIS ⁽⁷⁾ | 1 445 064 | 263 509 | 317 722 | 1,99 | 2,21 | 62,18 | 1,10 | 20,57 | 0,41 |
| Mashrak | 84 993 | 12 069 | 26 818 | 0,09 | 0,19 | 16,81 | 0,03 | 122,21 | 0,11 |
| EUROMED | 981 999 | 258 787 | 322 734 | 1,95 | 2,24 | 17,75 | 0,30 | 24,71 | 0,48 |
| Latin American Count. | 1 904 379 | 392 835 | 496 073 | 2,96 | 3,44 | 24,07 | 0,74 | 26,28 | 0,78 |
| Cent. Amer. Common Market | 65 641 | 20 310 | 17 786 | 0,15 | 0,12 | -11,08 | -0,01 | -12,43 | -0,02 |
| Andean Community | 296 758 | 44 965 | 73 244 | 0,34 | 0,51 | 27,47 | 0,13 | 62,89 | 0,21 |
| ASEM (relac. Euro-Asia) | 3 071 378 | 701 331 | 823 307 | 5,28 | 5,72 | 29,83 | 1,40 | 17,39 | 0,92 |
| EDA (Econ Dinam Asian) | 674 459 | 146 161 | 146 163 | 1,10 | 1,01 | 12,98 | 0,15 | 0,00 | 0,00 |
| China+H. Kong+Macau | 1 610 979 | 367 947 | 377 581 | 2,77 | 2,62 | 31,29 | 0,74 | 2,62 | 0,07 |

Source: GEE, based on data on International Trade statistics from Statistics Portugal (new data series for 1993-2009; provisional version for 2010 and preliminary for 2011). Estimates for operators under the assimilation threshold and non-responses are included in Intra-EU trade.

Notes:

[1] Sum of Arrivals from EU and Imports from third countries.

[2] (apr 10-mar 11)/(apr 09-mar 10) x 100 - 100

[3] Contributions to growth, shift share analysis: (rate of change) x (weight in the previous period) ÷ 100.

[4] African Countries of Portuguese Official Language

[5] African, Caribbean and Pacific Group of States

[6] Community of Portuguese Language Countries

[7] Commonwealth of Independent States

**Table 18 - International Trade of Portuguese goods
by geographical and economic areas (Intra + Extra-EU)
Exports ^[1] - Contributions of the main partners to the global growth rate**

| Period of assessment: january to march | | | | | | | | | | |
|--|-------------------|-------|------------------|-------------------|---------------|---------------|---|------------------------------|---------------|------------------------------|
| Countries and regions | 1000 Euros | | | | Structure (%) | | Growth rates and contributions to growth ^[2] | | | |
| | 2010 | Rank. | jan-mar | | jan-mar | | Last 12 months ^[2] | | jan-mar | |
| | | | 2010 | 2011 | 2010 | 2011 | y.o.y., % ^[2] | Contrib. p.p. ^[3] | y.o.y., % | Contrib. p.p. ^[3] |
| WORLD | 36 763 016 | | 8 659 448 | 10 132 589 | 100,00 | 100,00 | 16,38 | 16,38 | 17,01 | 17,01 |
| INTRA EU(27) | 27 573 243 | | 6 558 971 | 7 739 303 | 75,74 | 76,38 | 16,25 | 12,23 | 18,00 | 13,63 |
| 011 ES Spain | 9 760 710 | 1 | 2 352 980 | 2 639 843 | 27,17 | 26,05 | 12,29 | 3,35 | 12,19 | 3,31 |
| 004 DE Germany | 4 785 454 | 2 | 1 106 101 | 1 418 485 | 12,77 | 14,00 | 21,67 | 2,76 | 28,24 | 3,61 |
| 001 FR France | 4 338 416 | 3 | 1 074 622 | 1 308 555 | 12,41 | 12,91 | 13,44 | 1,65 | 21,77 | 2,70 |
| 006 GB United Kingdom | 2 014 033 | 4 | 484 217 | 517 810 | 5,59 | 5,11 | 8,72 | 0,50 | 6,94 | 0,39 |
| 003 NL Netherlands | 1 403 774 | 6 | 320 230 | 409 751 | 3,70 | 4,04 | 22,00 | 0,82 | 27,96 | 1,03 |
| 005 IT Italy | 1 393 950 | 7 | 343 876 | 408 960 | 3,97 | 4,04 | 18,56 | 0,70 | 18,93 | 0,75 |
| 017 BE Belgium | 1 055 762 | 9 | 269 314 | 287 742 | 3,11 | 2,84 | 25,48 | 0,66 | 6,84 | 0,21 |
| 030 SE Sweden | 374 483 | 12 | 92 572 | 113 997 | 1,07 | 1,13 | 10,64 | 0,12 | 23,14 | 0,25 |
| 060 PL Poland | 317 321 | 14 | 77 279 | 82 245 | 0,89 | 0,81 | 12,28 | 0,11 | 6,43 | 0,06 |
| 008 DK Denmark | 258 591 | 18 | 62 438 | 65 204 | 0,72 | 0,64 | 13,07 | 0,09 | 4,43 | 0,03 |
| 061 CZ Czech Republic | 243 234 | 19 | 56 350 | 66 511 | 0,65 | 0,66 | 17,43 | 0,11 | 18,03 | 0,12 |
| 032 FI Finland | 240 563 | 20 | 27 935 | 62 407 | 0,32 | 0,62 | 94,14 | 0,41 | 123,40 | 0,40 |
| 038 AT Austria | 205 686 | 24 | 47 859 | 51 172 | 0,55 | 0,51 | 11,52 | 0,07 | 6,92 | 0,04 |
| 066 RO Romania | 197 894 | 25 | 40 953 | 52 042 | 0,47 | 0,51 | 19,15 | 0,10 | 27,08 | 0,13 |
| 009 GR Greece | 107 700 | 33 | 25 814 | 29 032 | 0,30 | 0,29 | 8,35 | 0,03 | 12,46 | 0,04 |
| 064 HU Hungary | 106 042 | 34 | 24 350 | 30 194 | 0,28 | 0,30 | 17,59 | 0,05 | 24,00 | 0,07 |
| 007 IE Ireland | 105 999 | 35 | 20 051 | 31 048 | 0,23 | 0,31 | 8,25 | 0,03 | 54,84 | 0,13 |
| 063 SK Slovakia | 73 712 | 41 | 16 541 | 21 020 | 0,19 | 0,21 | 35,27 | 0,06 | 27,08 | 0,05 |
| 068 BG Bulgaria | 63 010 | 45 | 14 790 | 4 553 | 0,17 | 0,04 | 94,35 | 0,08 | -69,22 | -0,12 |
| 018 LU Luxembourg | 53 458 | 48 | 12 096 | 15 488 | 0,14 | 0,15 | 7,67 | 0,01 | 28,04 | 0,04 |
| 600 CY Cyprus | 48 255 | 51 | 6 714 | 10 320 | 0,08 | 0,10 | 54,86 | 0,06 | 53,70 | 0,04 |
| 091 SI Slovenia | 22 259 | 64 | 4 410 | 5 399 | 0,05 | 0,05 | 47,61 | 0,02 | 22,43 | 0,01 |
| 055 LT Lithuania | 19 847 | 68 | 3 828 | 5 580 | 0,04 | 0,06 | 77,65 | 0,03 | 45,78 | 0,02 |
| 046 MT Malta | 17 254 | 70 | 2 589 | 4 440 | 0,03 | 0,04 | 60,42 | 0,02 | 71,51 | 0,02 |
| 053 EE Estonia | 15 043 | 72 | 2 748 | 2 915 | 0,03 | 0,03 | 40,61 | 0,01 | 6,06 | 0,00 |
| 054 LV Latvia | 9 266 | 86 | 1 378 | 1 103 | 0,02 | 0,01 | 34,52 | 0,01 | -20,00 | 0,00 |
| OTHERS | 341 527 | | 66 936 | 93 487 | 0,77 | 0,92 | 51,99 | 0,38 | 39,67 | 0,31 |
| EXTRA EU(27) | 9 189 774 | | 2 100 477 | 2 393 286 | 24,26 | 23,62 | 16,77 | 4,15 | 13,94 | 3,38 |
| of which: | | | | | | | | | | |
| 1-EUROPE | 1 080 545 | | 268 301 | 264 398 | 3,10 | 2,61 | 16,94 | 0,47 | -1,45 | -0,05 |
| EFTA | 419 984 | | 99 880 | 114 007 | 1,15 | 1,13 | 15,97 | 0,18 | 14,14 | 0,16 |
| 039 CH Switzerland | 333 475 | 13 | 76 902 | 91 236 | 0,89 | 0,90 | 19,57 | 0,17 | 18,64 | 0,17 |
| 028 NO Norway | 82 639 | 37 | 21 843 | 21 920 | 0,25 | 0,22 | 3,66 | 0,01 | 0,35 | 0,00 |
| OTHERS | 660 561 | | 168 422 | 150 391 | 1,94 | 1,48 | 17,60 | 0,29 | -10,71 | -0,21 |
| 052 TR Turkey | 267 140 | 16 | 58 356 | 76 934 | 0,67 | 0,76 | 23,82 | 0,17 | 31,84 | 0,21 |
| 044 GI Gibraltar | 206 004 | 23 | 63 592 | 30 366 | 0,73 | 0,30 | 16,41 | 0,07 | -52,25 | -0,38 |
| 075 RU Russian Federation | 120 048 | 31 | 31 205 | 27 906 | 0,36 | 0,28 | 13,49 | 0,04 | -10,57 | -0,04 |
| 072 UA Ukraine | 21 653 | 67 | 3 815 | 3 125 | 0,04 | 0,03 | -1,11 | 0,00 | -18,09 | -0,01 |
| 092 HR Croatia | 12 493 | 78 | 3 936 | 2 787 | 0,05 | 0,03 | -10,19 | 0,00 | -29,20 | -0,01 |
| 2-AFRICA | 3 563 485 | | 807 583 | 931 290 | 9,33 | 9,19 | 6,27 | 0,66 | 15,32 | 1,43 |
| MAGHREB | 660 955 | | 131 242 | 200 098 | 1,52 | 1,97 | 35,33 | 0,58 | 52,47 | 0,80 |
| 204 MA Morocco | 302 375 | 15 | 55 189 | 81 745 | 0,64 | 0,81 | 45,53 | 0,31 | 48,12 | 0,31 |
| 208 DZ Algeria | 214 952 | 22 | 47 436 | 85 705 | 0,55 | 0,85 | 33,51 | 0,19 | 80,68 | 0,44 |
| 212 TN Tunisia | 143 628 | 29 | 28 617 | 32 648 | 0,33 | 0,32 | 19,49 | 0,07 | 14,09 | 0,05 |
| ACPOL ^[4] | 2 415 148 | | 552 776 | 609 775 | 6,38 | 6,02 | -2,78 | -0,21 | 10,31 | 0,66 |
| 330 AO Angola | 1 915 280 | 5 | 448 159 | 483 270 | 5,18 | 4,77 | -7,90 | -0,51 | 7,83 | 0,41 |
| 247 CV Cape Verde | 263 421 | 17 | 58 557 | 66 509 | 0,68 | 0,66 | 18,47 | 0,13 | 13,58 | 0,09 |
| 366 MZ Mozambique | 150 941 | 28 | 29 853 | 38 501 | 0,34 | 0,38 | 27,14 | 0,10 | 28,97 | 0,10 |
| 257 GW Guinea-Bissau | 42 836 | 55 | 7 881 | 12 479 | 0,09 | 0,12 | 41,14 | 0,04 | 58,34 | 0,05 |
| 311 ST Sao Tome and Principe | 42 671 | 56 | 8 326 | 9 016 | 0,10 | 0,09 | 17,86 | 0,02 | 8,29 | 0,01 |
| OTHERS | 487 381 | | 123 566 | 121 417 | 1,43 | 1,20 | 25,20 | 0,30 | -1,74 | -0,02 |
| 220 EG Egypt | 78 135 | 38 | 17 662 | 15 609 | 0,20 | 0,15 | 22,25 | 0,04 | -11,62 | -0,02 |
| 388 ZA South Africa | 74 630 | 40 | 16 431 | 18 632 | 0,19 | 0,18 | 32,47 | 0,06 | 13,40 | 0,03 |
| 248 SN Senegal | 56 271 | 47 | 10 454 | 13 358 | 0,12 | 0,13 | 60,37 | 0,07 | 27,78 | 0,03 |
| 288 NG Nigeria | 44 951 | 53 | 25 109 | 9 262 | 0,29 | 0,09 | -42,95 | -0,07 | -63,11 | -0,18 |
| 3-AMERICA | 2 789 020 | | 660 009 | 705 332 | 7,62 | 6,96 | 26,68 | 1,82 | 6,87 | 0,52 |
| NAFTA | 1 910 207 | | 465 258 | 479 700 | 5,37 | 4,73 | 24,59 | 1,16 | 3,10 | 0,17 |
| 400 US United States | 1 327 038 | 8 | 356 558 | 340 295 | 4,12 | 3,36 | 14,40 | 0,50 | -4,56 | -0,19 |
| 412 MX Mexico | 404 756 | 11 | 53 398 | 81 425 | 0,62 | 0,80 | 81,54 | 0,59 | 52,49 | 0,32 |
| 404 CA Canada | 178 413 | 26 | 55 302 | 57 979 | 0,64 | 0,57 | 12,76 | 0,06 | 4,84 | 0,03 |

(continues)

Period of assessment: january to march

| Countries and regions | 1000 Euros | | | Structure (%) | | Growth rates and contributions to growth [1] | | | | |
|---|------------------|----------------|----------------|---------------|-------------|--|---------------|-------------------|--------------|-------------------|
| | 2010 | jan-mar | | jan-mar | | Last 12 months [2] | | jan-mar | | |
| | | Rank. | 2010 | 2011 | 2010 | 2011 | y.o.y., % [2] | Contrib. p.p. [3] | y.o.y., % | Contrib. p.p. [3] |
| MERCOSUL | 500 350 | 99 158 | 153 042 | 1,15 | 1,51 | 49,53 | 0,56 | 54,34 | 0,62 | |
| 508 BR Brazil | 440 321 | 10 | 85 484 | 137 026 | 0,99 | 1,35 | 48,85 | 0,49 | 60,30 | 0,60 |
| 528 AR Argentina | 52 011 | 50 | 12 802 | 13 807 | 0,15 | 0,14 | 49,64 | 0,05 | 7,85 | 0,01 |
| OTHERS | 378 463 | 95 593 | 72 591 | 1,10 | 0,72 | 10,41 | 0,10 | -24,06 | -0,27 | |
| 484 VE Venezuela | 160 155 | 27 | 33 974 | 23 190 | 0,39 | 0,23 | 4,09 | 0,02 | -31,74 | -0,12 |
| 512 CL Chile | 92 226 | 36 | 21 106 | 19 275 | 0,24 | 0,19 | 52,37 | 0,09 | -8,67 | -0,02 |
| 459 AG Antigua and Barbuda | 22 048 | 66 | 21 973 | 301 | 0,25 | 0,00 | -99,15 | -0,13 | -98,63 | -0,25 |
| 4-ASIA | 1 141 839 | 254 100 | 349 522 | 2,93 | 3,45 | 25,47 | 0,76 | 37,55 | 1,10 | |
| MIDDLE EAST | 381 968 | 87 871 | 105 205 | 1,01 | 1,04 | 18,18 | 0,19 | 19,73 | 0,20 | |
| 647 AE United Arab Emirates | 75 159 | 39 | 20 580 | 20 840 | 0,24 | 0,21 | 8,65 | 0,02 | 1,26 | 0,00 |
| 632 SA Saudi Arabia | 72 829 | 42 | 18 678 | 27 669 | 0,22 | 0,27 | 18,37 | 0,04 | 48,14 | 0,10 |
| 624 IL Israel | 69 297 | 43 | 14 146 | 20 801 | 0,16 | 0,21 | 23,71 | 0,04 | 47,04 | 0,08 |
| 616 IR Iran, Islamic Republic of | 37 481 | 57 | 9 356 | 9 836 | 0,11 | 0,10 | -0,92 | 0,00 | 5,12 | 0,01 |
| 604 LB Lebanon | 26 929 | 60 | 6 032 | 6 153 | 0,07 | 0,06 | 21,16 | 0,01 | 2,01 | 0,00 |
| ASEAN | 101 746 | 23 453 | 27 409 | 0,27 | 0,27 | 23,31 | 0,06 | 16,87 | 0,05 | |
| 706 SG Singapore | 52 966 | 49 | 11 689 | 14 730 | 0,13 | 0,15 | 36,85 | 0,05 | 26,02 | 0,04 |
| 680 TH Thailand | 13 281 | 76 | 3 647 | 3 830 | 0,04 | 0,04 | -10,31 | 0,00 | 5,04 | 0,00 |
| 690 VN Viet-Nam | 11 110 | 80 | 2 458 | 3 105 | 0,03 | 0,03 | 28,11 | 0,01 | 26,28 | 0,01 |
| 701 MY Malaysia | 10 548 | 82 | 3 176 | 3 233 | 0,04 | 0,03 | -6,42 | 0,00 | 1,81 | 0,00 |
| OTHERS | 658 125 | 142 776 | 216 907 | 1,65 | 2,14 | 30,18 | 0,52 | 51,92 | 0,86 | |
| 720 CN China | 235 167 | 21 | 55 489 | 79 343 | 0,64 | 0,78 | 8,32 | 0,06 | 42,99 | 0,28 |
| 732 JP Japan | 127 837 | 30 | 25 003 | 46 941 | 0,29 | 0,46 | 70,07 | 0,19 | 87,74 | 0,25 |
| 740 HK Hong Kong | 113 425 | 32 | 28 211 | 23 397 | 0,33 | 0,23 | 19,74 | 0,05 | -17,07 | -0,06 |
| 664 IN India | 61 239 | 46 | 9 081 | 26 351 | 0,10 | 0,26 | 86,43 | 0,11 | 190,16 | 0,20 |
| 728 KR Korea, Republic of | 47 172 | 52 | 12 355 | 12 307 | 0,14 | 0,12 | 5,63 | 0,01 | -0,39 | 0,00 |
| 736 TW Taiwan | 27 241 | 59 | 4 131 | 16 976 | 0,05 | 0,17 | 149,88 | 0,07 | 310,91 | 0,15 |
| 743 MO Macao | 13 593 | 74 | 3 357 | 3 437 | 0,04 | 0,03 | 6,98 | 0,00 | 2,37 | 0,00 |
| 5-AUSTR.,OC,P. REG | 83 885 | 18 897 | 19 130 | 0,22 | 0,19 | 35,48 | 0,07 | 1,23 | 0,00 | |
| 800 AU Australia | 68 703 | 44 | 14 212 | 16 032 | 0,16 | 0,16 | 38,40 | 0,06 | 12,81 | 0,02 |
| 804 NZ New Zealand | 7 587 | 92 | 1 516 | 2 828 | 0,02 | 0,03 | 33,01 | 0,01 | 86,51 | 0,02 |
| 6-DIVERSOS | 531 000 | 91 586 | 123 614 | 1,06 | 1,22 | 26,65 | 0,36 | 34,97 | 0,37 | |
| 952 QS Stores and provisions (Extra EU) | 450 598 | | 82 427 | 111 727 | 0,95 | 1,10 | 33,28 | 0,36 | 35,55 | 0,34 |
| 960 QW Countries/territories not specif. (Extra EU) | 80 387 | | 9 158 | 11 887 | 0,11 | 0,12 | -1,50 | 0,00 | 29,80 | 0,03 |

Memo:

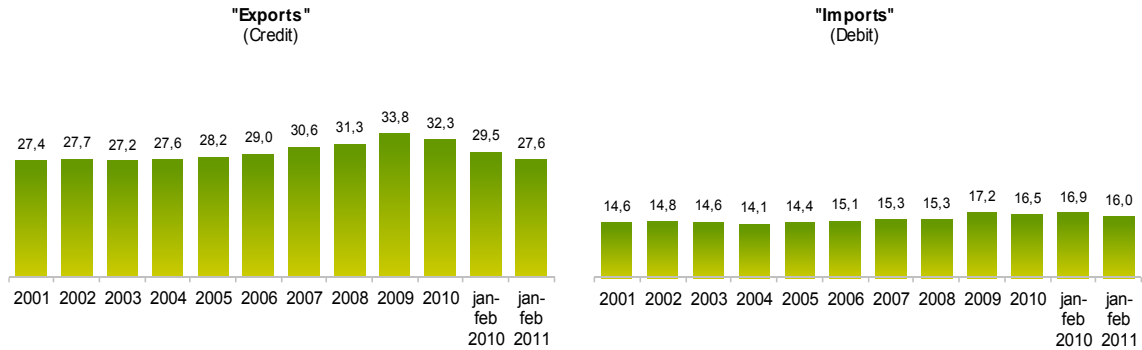
| | | | | | | | | | |
|---------------------------|------------|-----------|-----------|-------|-------|-------|-------|--------|-------|
| Intra EU-15 | 26 440 104 | 6 307 041 | 7 452 982 | 72,83 | 73,55 | 15,98 | 11,57 | 18,17 | 13,23 |
| Intra-enlargement | 1 133 139 | 251 931 | 286 321 | 2,91 | 2,83 | 23,01 | 0,66 | 13,65 | 0,40 |
| OECD (excl. EU) | 2 848 517 | 676 558 | 748 703 | 7,81 | 7,39 | 24,81 | 1,77 | 10,66 | 0,83 |
| OPEC | 2 621 138 | 624 635 | 675 852 | 7,21 | 6,67 | -2,58 | -0,22 | 8,20 | 0,59 |
| ACP [5] | 2 844 720 | 677 602 | 720 346 | 7,83 | 7,11 | -0,80 | -0,07 | 6,31 | 0,49 |
| CPLP [6] | 2 862 146 | 639 249 | 747 833 | 7,38 | 7,38 | 3,10 | 0,27 | 16,99 | 1,25 |
| CIS [7] | 157 829 | 37 884 | 37 171 | 0,44 | 0,37 | 15,50 | 0,06 | -1,88 | -0,01 |
| Mashrak | 152 296 | 33 873 | 33 560 | 0,39 | 0,33 | 18,60 | 0,07 | -0,92 | 0,00 |
| EUROMED | 1 149 689 | 237 617 | 331 394 | 2,74 | 3,27 | 29,59 | 0,86 | 39,47 | 1,08 |
| Latin American Count. | 1 251 497 | 224 030 | 305 279 | 2,59 | 3,01 | 51,98 | 1,39 | 36,27 | 0,94 |
| Cent. Amer. Common Market | 27 011 | 4 797 | 8 614 | 0,06 | 0,09 | 21,47 | 0,02 | 79,57 | 0,04 |
| Andean Community | 199 491 | 40 811 | 32 755 | 0,47 | 0,32 | 16,27 | 0,08 | -19,74 | -0,09 |
| ASEM (relac. Euro-Asia) | 585 689 | 127 744 | 197 078 | 1,48 | 1,94 | 27,42 | 0,43 | 54,28 | 0,80 |
| EDA (Econ Dinam Asian) | 264 633 | 63 209 | 74 474 | 0,73 | 0,73 | 26,19 | 0,17 | 17,82 | 0,13 |
| China+H. Kong+Macao | 362 185 | 87 056 | 106 176 | 1,01 | 1,05 | 11,29 | 0,12 | 21,96 | 0,22 |

Source: GEE, based on data on International Trade statistics from Statistics Portugal (new data series for 1993-2009; provisional version for 2010 and preliminary for 2011). Estimates for operators under the assimilation threshold and non-responses are included in Intra-EU trade.

Notas:

- [1] Sum of Dispatches to EU and Exports to third countries.
- [2] (apr 10-mar 11)/(apr 09-mar 10) x 100 - 100
- [3] Contributions to growth, shift share analysis: (rate of change) x (weight in the previous period) ÷ 100.
- [4] African Countries of Portuguese Official Language
- [5] African, Caribbean and Pacific Group of States
- [6] Community of Portuguese Language Countries
- [7] Commonwealth of Independent States

Chart 5 – Share of Services in total Trade



Source: GEE, based on data from the Balance of Payments Statistics of the Bank of Portugal.

Notes:

[1] The "Exports" from the Balance of Payments (Credit) corresponds to the Exports in International Trade Statistics (sum of "Exports" of goods to the EU with the "Exports" to Third Countries).

[2] The "Imports" from the Balance of Payments (Debit) corresponds to the Imports in International Trade Statistics (sum of the "Imports" of goods from the EU with the "Imports" from Third Countries).

Table 19 - Trade of Goods and Services as a percentage of GDP

| | 2007 | 2008 | 2009 | 2010 | 2008 | | | | 2009 | | | | 2010 | | | |
|--|-------------|-------------|--------------|-------------|-------------|-------------|-------------|-------------|--------------|--------------|-------------|-------------|-------------|-------------|-------------|-------------|
| | | | | | Q1 | Q2 | Q3 | Q4 | Q1 | Q2 | Q3 | Q4 | Q1 | Q2 | Q3 | Q4 |
| Current Values as a percentage of GDP | | | | | | | | | | | | | | | | |
| Exports (Fob) | 32,2 | 32,4 | 28,0 | 31,0 | 33,4 | 33,1 | 33,3 | 30,0 | 26,8 | 27,3 | 28,8 | 28,8 | 29,0 | 30,6 | 32,2 | 32,1 |
| - Goods | 23,8 | 23,8 | 20,0 | 22,6 | 24,6 | 24,5 | 24,8 | 21,5 | 18,8 | 19,3 | 21,0 | 20,8 | 21,0 | 22,1 | 23,6 | 23,6 |
| - Services | 8,4 | 8,6 | 8,0 | 8,4 | 8,8 | 8,6 | 8,5 | 8,5 | 8,0 | 8,0 | 7,8 | 8,0 | 8,1 | 8,5 | 8,6 | 8,6 |
| Imports (Fob) | 40,2 | 42,5 | 35,5 | 38,2 | 42,6 | 43,3 | 44,3 | 39,9 | 34,7 | 34,2 | 36,9 | 36,0 | 36,1 | 39,0 | 38,2 | 39,4 |
| - Goods | 34,7 | 36,8 | 30,1 | 32,6 | 37,1 | 37,5 | 38,4 | 34,1 | 29,3 | 28,7 | 31,6 | 30,7 | 30,7 | 33,3 | 32,5 | 33,7 |
| - Services | 5,5 | 5,7 | 5,4 | 5,6 | 5,5 | 5,8 | 5,8 | 5,8 | 5,4 | 5,5 | 5,3 | 5,3 | 5,4 | 5,7 | 5,7 | 5,6 |
| Annual real growth rate | | | | | | | | | | | | | | | | |
| Exports (Fob) | 7,6 | -0,1 | -11,6 | 8,8 | 5,0 | 2,7 | 0,8 | -8,8 | -19,0 | -15,4 | -9,5 | -1,3 | 8,8 | 9,4 | 8,6 | 8,3 |
| - Goods | 5,7 | -0,6 | -13,4 | 9,7 | 4,0 | 2,5 | 1,8 | -10,5 | -22,7 | -18,3 | -10,0 | -0,9 | 11,7 | 10,5 | 7,9 | 9,0 |
| - Services | 13,6 | 1,4 | -6,5 | 6,3 | 8,2 | 3,5 | -1,8 | -3,7 | -8,3 | -7,1 | -8,0 | -2,4 | 1,8 | 6,6 | 10,5 | 6,4 |
| Imports (Fob) | 5,5 | 2,3 | -10,6 | 5,2 | 7,0 | 4,0 | 3,4 | -4,7 | -15,4 | -14,6 | -8,7 | -3,3 | 5,7 | 9,6 | 1,6 | 4,4 |
| - Goods | 5,5 | 2,1 | -11,3 | 5,5 | 7,1 | 3,6 | 3,4 | -5,3 | -17,1 | -16,2 | -8,8 | -2,6 | 6,6 | 10,9 | 0,8 | 4,2 |
| - Services | 5,9 | 3,8 | -6,3 | 3,6 | 5,7 | 6,7 | 3,8 | -0,5 | -4,6 | -4,8 | -7,8 | -7,9 | 0,6 | 1,9 | 6,5 | 5,4 |

Source: GEE, based on data from the Quarterly National Accounts (base 2006) of Statistics Portugal. Includes Intra and Extracommunity trade.

Notes:

The "Exports" in National Accounts corresponds to the Exports in International Trade Statistics (sum of "Exports" of goods to the EU with the "Exports" to Third Countries).

The "Imports" in National Accounts corresponds to the Imports in International Trade Statistics (sum of "Imports" of goods from the EU with the "Imports" from Third Countries).

Table 20 - Goods and Services (Credit) - Services components

values in Millions of Euros

| CREDIT ("Exports") | january to february | | Structure (%) | | | | Growth rates and contributions to growth ^[1] | | | |
|-------------------------------------|---------------------|--------------|---------------|--------------|--------------|--------------|---|---------------|-------------|---------------|
| | | | Annual | | jan-feb | | Last 12 months ^[2] | | jan-feb | |
| | 2010 | 2011 | 2005 | 2010 | 2010 | 2011 | y.o.y., % | contrib. p.p. | y.o.y., % | contrib. p.p. |
| Goods and Services | 7 578 | 8 866 | 100,0 | 100,0 | 100,0 | 100,0 | 14,5 | 14,5 | 17,0 | 17,0 |
| Goods | 5 346 | 6 422 | 71,8 | 67,7 | 70,5 | 72,4 | 17,1 | 11,4 | 20,1 | 14,2 |
| Services | 2 232 | 2 444 | 28,2 | 32,3 | 29,5 | 27,6 | 9,3 | 3,1 | 9,5 | 2,8 |
| Transportation | 625 | 733 | 5,9 | 8,6 | 8,2 | 8,3 | 16,1 | 1,4 | 17,3 | 1,4 |
| Travel | 735 | 794 | 14,3 | 14,0 | 9,7 | 9,0 | 10,7 | 1,5 | 8,0 | 0,8 |
| Communications services | 67 | 69 | 1,0 | 0,9 | 0,9 | 0,8 | -0,9 | 0,0 | 4,1 | 0,0 |
| Construction services | 58 | 88 | 0,7 | 0,9 | 0,8 | 1,0 | 9,1 | 0,1 | 51,3 | 0,4 |
| Insurance services | 20 | 24 | 0,2 | 0,2 | 0,3 | 0,3 | -7,6 | 0,0 | 17,9 | 0,0 |
| Financial services | 17 | 29 | 0,4 | 0,3 | 0,2 | 0,3 | 22,5 | 0,1 | 66,2 | 0,2 |
| Computer and information services | 39 | 55 | 0,3 | 0,5 | 0,5 | 0,6 | 8,2 | 0,0 | 41,0 | 0,2 |
| Royalties and license fees | 6 | 4 | 0,1 | 0,1 | 0,1 | 0,0 | -63,5 | -0,1 | -27,1 | 0,0 |
| Other business services | 588 | 575 | 4,8 | 6,0 | 7,8 | 6,5 | 0,5 | 0,0 | -2,2 | -0,2 |
| Personal, cult., and recreat. Serv. | 45 | 38 | 0,4 | 0,5 | 0,6 | 0,4 | 12,3 | 0,1 | -14,5 | -0,1 |
| Government services | 33 | 36 | 0,3 | 0,4 | 0,4 | 0,4 | 14,7 | 0,1 | 7,9 | 0,0 |

Source: GEE, based on data from the Balance of Payments Statistics of Banco de Portugal.

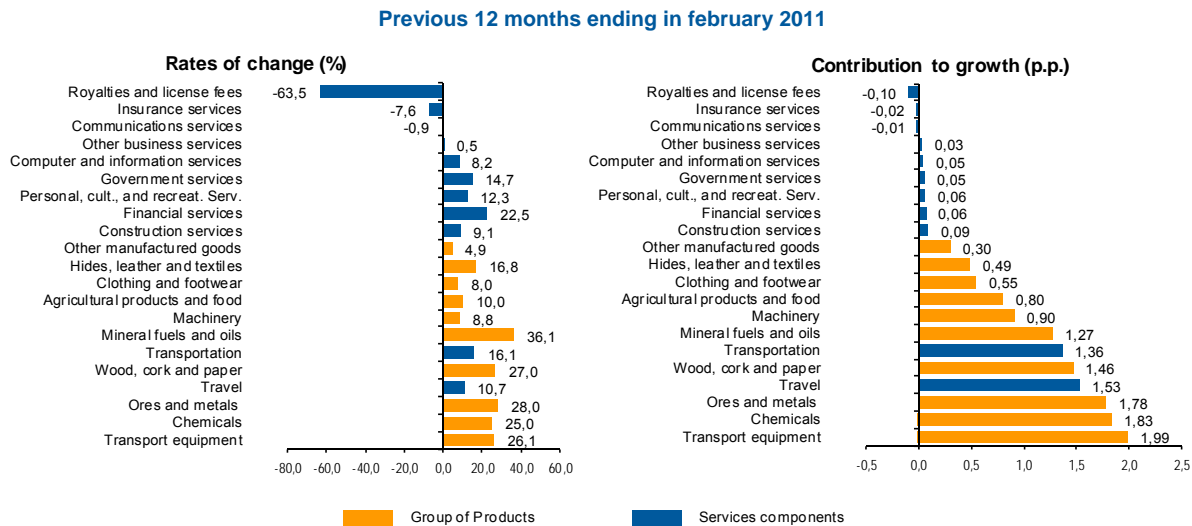
Notes:

The "Exports" from the Balance of Payments (Credit) corresponds to the Exports in International Trade Statistics (sum of "Exports" of goods to the EU with the "Exports" to Third Countries).

[1] Contributions to the growth rate, shift share analysis: (rate of change) x (weight in the previous period) ÷ 100. Measures the proportion of growth of the "Export" attributable to each category specified.

[2] 12 months ending in february 2011

Chart 6 - Growth rates of "exports" of goods and services and contribution to growth



Source: GEE, based on data from the Bank de Portugal for "Exports" of goods and services, and Statistics Portugal, for the structure of "exports" of goods. The distribution of the contribution of growth of "exports" of goods (data from the Balance of Payments, Bank of Portugal) by group of products follows the structure implicit in the database of International Trade Statistics Portugal for analogous Goods (sum of "Exports" of goods to the EU with the "Exports" to Third Countries).

Notes:

The "Exports" from the Balance of Payments (Credit) corresponds to the Exports in International Trade Statistics (sum of "Exports" of goods to the EU with the "Exports" to Third Countries).

[1] Contribution to growth, shift-share analysis: (rate of change) x (weight in the previous period) ÷ 100. The sum corresponds to the growth rate of Exports of Goods and Services over the past 12 months, according to statistics from the Balance of Payments Bank of Portugal (14,5%).

Table 21 - Goods and Services (Credit) - Services components
Annual rate of change (2003-2011)

| Credit ("Exports") | Share in 2010 (%) | 2003 | 2004 | 2005 | 2006 | 2007 | 2008 | 2009 | 2010 | jan-feb 2011 |
|-------------------------------------|----------------------|------------|------------|------------|-------------|-------------|------------|--------------|-------------|-----------------|
| Goods and Services | 100,0 | 2,1 | 6,3 | 1,5 | 16,4 | 9,9 | 2,8 | -15,3 | 12,7 | 17,0 |
| Goods | 67,7 | 2,8 | 5,7 | 0,7 | 15,1 | 7,5 | 1,8 | -18,3 | 15,2 | 20,1 |
| Services | 32,3 | 0,2 | 8,0 | 3,5 | 19,9 | 15,7 | 5,3 | -8,7 | 7,7 | 9,5 |
| Transportation | 8,6 | 9,2 | 9,1 | 11,4 | 41,7 | 18,9 | 10,4 | -12,6 | 13,0 | 17,3 |
| Travel | 14,0 | -4,0 | 5,9 | 0,1 | 7,6 | 10,9 | 0,5 | -7,2 | 10,2 | 8,0 |
| Communications services | 0,9 | 21,8 | 18,8 | 20,4 | 8,6 | 16,4 | 4,7 | -15,6 | -3,7 | 4,1 |
| Construction services | 0,9 | 25,8 | 27,4 | -15,7 | 45,9 | 40,9 | 8,3 | -21,9 | -1,9 | 51,3 |
| Insurance services | 0,2 | 4,9 | 32,9 | -26,5 | 14,2 | 5,9 | 5,1 | 3,3 | -9,1 | 17,9 |
| Financial services | 0,3 | -11,5 | 30,6 | -9,2 | 16,8 | 25,8 | -4,7 | -32,7 | 4,4 | 66,2 |
| Computer and information services | 0,5 | 18,0 | 20,6 | 4,5 | 41,6 | 36,8 | 15,3 | 1,0 | 1,1 | 41,0 |
| Royalties and license fees | 0,1 | 5,9 | -15,7 | 69,5 | 51,4 | 10,0 | -29,8 | 150,5 | -74,1 | -27,1 |
| Other business services | 6,0 | -1,1 | 4,3 | 8,9 | 27,0 | 19,5 | 10,2 | -5,9 | 1,5 | -2,2 |
| Personal, cult., and recreat. Serv. | 0,5 | -3,0 | 30,8 | 6,7 | 22,5 | -6,3 | 7,1 | 10,7 | 20,7 | -14,5 |
| Government services | 0,4 | 0,1 | 6,8 | -15,4 | 17,7 | 10,3 | 0,5 | -2,4 | 17,6 | 7,9 |

Source: GEE, based on data from the Balance of Payments Statistics of Banco de Portugal.

Note:

* The "Exports" from the Balance of Payments (Credit) corresponds to the Exports in International Trade Statistics (sum of "Exports" of goods to the EU with the "Exports" to Third Countries).

Table 22 - Goods and Services (Debit) - Services components

| DEBIT ("Imports") | values in Millions of Euros | | | | | | | | | |
|-------------------------------------|-----------------------------|---------------|---------------|--------------|--------------|--------------|--|-------------------|-------------|---------------|
| | january to february | | Structure (%) | | | | Growth rates and contributions to growth [1] | | | |
| | | | Annual | | jan-feb | | Last 12 months [2] | | jan-feb | |
| | 2010 | 2011 | 2005 | 2010 | 2010 | 2011 | y.o.y., % | contrib. p.p. [1] | y.o.y., % | contrib. p.p. |
| Goods and Services | 9 535 | 10 393 | 100,0 | 100,0 | 100,0 | 100,0 | 10,2 | 10,2 | 9,0 | 9,0 |
| Goods | 7 928 | 8 729 | 85,6 | 83,5 | 83,1 | 84,0 | 11,0 | 9,2 | 10,1 | 8,4 |
| Services | 1 607 | 1 664 | 14,4 | 16,5 | 16,9 | 16,0 | 6,4 | 1,1 | 3,6 | 0,6 |
| Transportation | 452 | 486 | 4,5 | 4,9 | 4,7 | 4,7 | 8,8 | 0,4 | 7,4 | 0,3 |
| Travel | 407 | 413 | 4,3 | 4,5 | 4,3 | 4,0 | 9,1 | 0,4 | 1,6 | 0,1 |
| Communications services | 63 | 64 | 0,5 | 0,7 | 0,7 | 0,6 | -1,9 | 0,0 | 1,8 | 0,0 |
| Construction services | 13 | 15 | 0,2 | 0,1 | 0,1 | 0,1 | -3,8 | 0,0 | 21,6 | 0,0 |
| Insurance services | 44 | 37 | 0,3 | 0,4 | 0,5 | 0,4 | 14,3 | 0,0 | -15,7 | -0,1 |
| Financial services | 26 | 50 | 0,3 | 0,4 | 0,3 | 0,5 | 56,7 | 0,2 | 88,5 | 0,2 |
| Computer and information services | 41 | 48 | 0,3 | 0,6 | 0,4 | 0,5 | 8,3 | 0,0 | 17,0 | 0,1 |
| Royalties and license fees | 86 | 61 | 0,5 | 0,6 | 0,9 | 0,6 | -0,4 | 0,0 | -29,6 | -0,3 |
| Other business services | 381 | 399 | 2,8 | 3,5 | 4,0 | 3,8 | -0,1 | 0,0 | 4,9 | 0,2 |
| Personal, cult., and recreat. Serv. | 73 | 74 | 0,5 | 0,7 | 0,8 | 0,7 | 1,5 | 0,0 | 1,6 | 0,0 |
| Government services | 20 | 15 | 0,2 | 0,2 | 0,2 | 0,1 | -4,1 | 0,0 | -21,9 | 0,0 |

Source: GEE, based on data from the Balance of Payments Statistics of Banco de Portugal for the Total Exports of Goods and Services.

Notes:

* The "Imports" from the Balance of Payments (Debit) corresponds to the Imports in International Trade Statistics (sum of the "Imports" of goods from the EU with the "Imports" from Third Countries).

Fob values for "Imports" of goods.

[1] Contributions to growth, shift share analysis: (rate of change) x (weight in the previous period) ÷ 100. Measures the proportion of growth of "Imports" attributable to each category specified.

[2] 12 months ending in february 2011