

Statistics of International Trade

Nº 6/2012

Includes baseline data from Statistics Portugal for the international trade of Portugal

■ January to April 2012 - Intra + Extra-EU Trade

Contents

Global Evolution

| | |
|---|--------|
| 1. Recent Trade Balance | Pag. 3 |
| 2. Trade Balance with and without energy products | 4 |
| 3. Trade Balance – aggregate data (Intra+Extra) | 4 |
| 4. Monthly and quarterly evolution | 5 |

Exports of Goods

| | |
|--|----|
| 5. By Group of Products (Intra+Extra) | 6 |
| 6. By Group of Products (Extra) | 7 |
| 7. By Group of Products – growth rate and contribution to growth | 8 |
| 8. From selected markets (Intra+Extra) | 9 |
| 9. From selected markets (Extra) | 10 |
| 10. By destination market – structure (%) | 10 |
| 11. By destination market – growth rate and contribution to growth | 11 |

Imports of Goods

| | |
|---|----|
| 12. By Group of Products (Intra+Extra EU) | 12 |
| 13. From a selection of markets (Intra+Extra) | 13 |
| 14. By Group of Products (Extra EU) | 14 |
| 15. From a selection of markets (Extra) | 14 |

By geographical and economic areas

| | |
|---|----|
| 16. Main Countries (Intra and Extra) | 15 |
| 17. Imports: contribution to growth (Intra and Extra) | 17 |
| 18. Exports: contribution to growth (Intra and Extra) | 19 |

Goods and Services

| | |
|--|----|
| 19. Trade in goods and services as a percentage of GDP | 21 |
| 20. Goods and Services (credit) – Services components | 22 |
| 21. Goods and Services (credit) – growth rate | 23 |
| 22. Goods and Services (debit) – Services components | 23 |

Charts Index

| | |
|--|----|
| 1. Rate of coverage of the imports by the exports of goods | 2 |
| 2. Growth rate of exports by Group of Products and contribution to growth | 7 |
| 3. Growth rate of exports by markets and contribution to growth | 9 |
| 4. Growth rate of imports by markets and contribution to growth | 13 |
| 5. Share of services in total trade | 21 |
| 6. Growth rate of exports of goods and services and contribution to growth | 22 |

NOTE

In **June 2010**, Statistics Portugal announced a new data series on International Trade for the period 1993-2009. This new series resulted from a review process of its methodology, which reflected the need to obtain results with greater reliability and accuracy, and includes, in addition to various methodological changes, new information reported by companies.

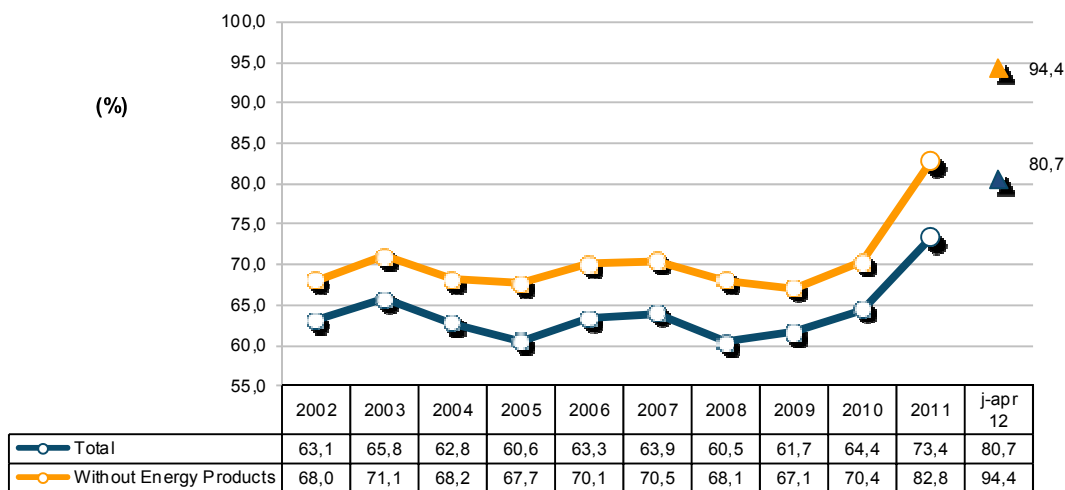
Since 1993, following the creation of the Single Market, the collection of information relating to international trade in goods is done by a new system supported by a compulsory survey (Intrastat declaration) for all operators, whose trade in goods with other Member States exceeds certain thresholds (assimilation threshold). Since 2005, and following the Community rules on quality control of the statistics on International Trade, a confrontation between regular information from the Intrastat system and data of an administrative nature was put in place, which included statements from Value Added Tax (VAT), as well as an analysis of the asymmetries with the statistics reported by other member countries. Following that, estimates for the total international trade, based on estimates for companies that are below the threshold of assimilation, as well as non-response of Intra-community trade started to be published.

The entry into force of “*Informação Empresarial Simplificada*” (IES) in 2007, contributed to ease the comparison of data on international trade with other sources, now made possible from 2006 onwards (reference period for the data). IES, along with information on the VAT constitutes an important source of information for the validity of the quality of the statistics on International Trade.

In **May 2011**, Statistics Portugal disseminated the definitive results concerning the year of 2009, in compliance with the Revision Policy of International trade, implemented in 2010. Also, the magnitude of an error detected on the data declared by an enterprise led Statistics Portugal to make an extraordinary revision on the data from 2007 and 2008 (Intra-EU Trade), which is reflected in this publication.

Global Evolution¹

**Chart 1 – Progress of the coverage rate (fob/cif),
% imports by exports of goods
Intra + Extra EU Trade**



Source: GEE, based on data on International Trade statistics from Statistics Portugal (most up-to-date versions available). Estimates for operators under the assimilation threshold and non-responses are included in Intra-EU trade.

¹ Database of international trade (Intra and Extra EU) released by Statistics Portugal (SP) for the period of January to april 2012, corresponding to preliminary versions for both intra and extra community trade. The data for intratrade includes estimates for non-responses (value of transactions of companies for which SP has not yet received information), as well as periodic reporting of companies that are below the assimilation threshold (annual value of intra-Community below which operators are exempted from Intrastat statistical declaration, limited to delivery of the periodic tax declaration: in the case of Portugal, 200 thousand euros for imports from EU and 250 thousand for exports to EU in 2011). On the other hand, the current methodology considers, in addition to the regular comparison between the Intrastat declarations and Value Added Tax (VAT), the comparison with the data obtained from “*Informação Empresarial Simplificada*” (IES).

Table 1 – Recent evolution of the Portuguese Trade Balance (Goods)

Preliminary data version of january to april 2012

| Intra + Extra-EU | january to april | | | Last 3 months | | | Last 12 months | | |
|---------------------------------|------------------|--------|----------|-----------------|-----------------|----------|----------------|----------------|----------|
| | 2011 | 2012 | y.o.y. % | feb 11 - apr 11 | feb 12 - apr 12 | y.o.y. % | may 10- apr 11 | may 11- apr 12 | y.o.y. % |
| Millions of Euros | | | | | | | | | |
| Exports (fob) | 13 654 | 14 980 | 9,7 | 10 533 | 11 423 | 8,4 | 38 795 | 43 709 | 12,7 |
| Imports (cif) | 19 575 | 18 563 | -5,2 | 15 122 | 13 963 | -7,7 | 58 870 | 56 717 | -3,7 |
| Imports (fob) | 18 653 | 17 688 | -5,2 | 14 409 | 13 305 | -7,7 | 56 097 | 54 046 | -3,7 |
| Trade Balance (fob-cif) | -5 920 | -3 583 | -39,5 | -4 589 | -2 540 | -44,6 | -20 075 | -13 008 | -35,2 |
| Trade Balance (fob-fob) | -4 999 | -2 709 | -45,8 | -3 876 | -1 882 | -51,4 | -17 302 | -10 337 | -40,3 |
| Rate of Coverage (fob/cif), % | 69,8 | 80,7 | - | 69,7 | 81,8 | - | 65,9 | 77,1 | - |
| Rate of Coverage (fob/fob), % | 73,2 | 84,7 | - | 73,1 | 85,9 | - | 69,2 | 80,9 | - |
| Without Energy products: | | | | | | | | | |
| Exports (fob) | 12 808 | 13 736 | 7,2 | 9 842 | 10 446 | 6,1 | 36 329 | 40 214 | 10,7 |
| Imports (cif) | 16 379 | 14 554 | -11,1 | 12 609 | 11 009 | -12,7 | 49 871 | 45 611 | -8,5 |
| Imports (fob) | 15 608 | 13 868 | -11,1 | 12 015 | 10 490 | -12,7 | 47 522 | 43 462 | -8,5 |
| Trade Balance (fob-cif) | -3 571 | - 817 | -77,1 | -2 767 | - 563 | -79,7 | -13 542 | -5 397 | -60,1 |
| Trade Balance (fob-fob) | -2 800 | - 132 | -95,3 | -2 173 | - 44 | -98,0 | -11 193 | -3 249 | -71,0 |
| Rate of Coverage (fob/cif), % | 78,2 | 94,4 | - | 78,1 | 94,9 | - | 72,8 | 88,2 | - |
| Rate of Coverage (fob/fob), % | 82,1 | 99,0 | - | 81,9 | 99,6 | - | 76,4 | 92,5 | - |
| Millions US\$ | | | | | | | | | |
| Exports (fob) | 18 952 | 19 664 | 3,8 | | | | | | |
| Imports (cif) | 27 178 | 24 361 | -10,4 | | | | | | |
| Imports (fob) | 25 898 | 23 214 | -10,4 | | | | | | |
| Trade Balance (fob-cif) | -8 226 | -4 697 | -42,9 | | | | | | |
| Trade Balance (fob-fob) | -6 946 | -3 550 | -48,9 | | | | | | |

| Extra-EU | january to april | | | Last 3 months | | | Last 12 months | | |
|---------------------------------|------------------|--------|----------|-----------------|-----------------|----------|----------------|----------------|----------|
| | 2011 | 2012 | y.o.y. % | feb 11 - apr 11 | feb 12 - apr 12 | y.o.y. % | may 10- apr 11 | may 11- apr 12 | y.o.y. % |
| Millions of Euros | | | | | | | | | |
| Exports (fob) | 3 261 | 4 136 | 26,8 | 2 559 | 3 169 | 23,8 | 9 620 | 11 857 | 23,3 |
| Imports (cif) | 4 992 | 5 256 | 5,3 | 3 899 | 3 837 | -1,6 | 14 540 | 15 845 | 9,0 |
| Imports (fob) | 4 757 | 5 009 | 5,3 | 3 716 | 3 656 | -1,6 | 13 855 | 15 099 | 9,0 |
| Trade Balance (fob-cif) | -1 731 | -1 121 | -35,2 | -1 340 | - 667 | -50,2 | -4 921 | -3 989 | -18,9 |
| Trade Balance (fob-fob) | -1 495 | - 873 | -41,6 | -1 156 | - 487 | -57,9 | -4 236 | -3 243 | -23,4 |
| Rate of Coverage (fob/cif), % | 65,3 | 78,7 | - | 65,6 | 82,6 | - | 66,2 | 74,8 | - |
| Rate of Coverage (fob/fob), % | 68,6 | 82,6 | - | 68,9 | 86,7 | - | 69,4 | 78,5 | - |
| Without Energy products: | | | | | | | | | |
| Exports (fob) | 2 787 | 3 395 | 21,8 | 2 152 | 2 632 | 22,3 | 8 190 | 9 820 | 19,9 |
| Imports (cif) | 2 664 | 2 266 | -14,9 | 2 034 | 1 691 | -16,9 | 7 822 | 7 220 | -7,7 |
| Imports (fob) | 2 538 | 2 160 | -14,9 | 1 939 | 1 611 | -16,9 | 7 454 | 6 880 | -7,7 |
| Trade Balance (fob-cif) | 123 | 1 128 | 816,0 | 118 | 941 | 697,9 | 368 | 2 600 | 606,6 |
| Trade Balance (fob-fob) | 249 | 1 235 | 396,7 | 214 | 1 021 | 377,4 | 736 | 2 940 | 299,2 |
| Rate of Coverage (fob/cif), % | 104,6 | 149,8 | - | 105,8 | 155,6 | - | 104,7 | 136,0 | - |
| Rate of Coverage (fob/fob), % | 109,8 | 157,2 | - | 111,0 | 163,3 | - | 109,9 | 142,7 | - |

Source: GEE, based on data on International Trade statistics from Statistics Portugal (most up-to-date versions available). Estimates for operators under the assimilation threshold and non-responses are included in Intra-EU trade.

Notes:

Sum of Exports to EU and Exports to third countries.

Sum of Imports from EU and Imports from third countries.

Conversion factor used cif-fob for 2008, 2009, 2010, 2011 and 2012: 0.9529

Table 2 – Trade Balance (goods) of Portugal with and without Energy Products (2007-2012)

values in Millions of Euros

| Intra + Extra EU | 2007 | 2008 | 2009 | 2010 | 2011 | jan-apr | |
|--------------------------------|--------|--------|--------|--------|--------|---------|--------|
| | | | | | | 2011 | 2012 |
| With Energy Products | | | | | | | |
| Exports (fob) | 38 294 | 38 847 | 31 697 | 36 762 | 42 384 | 13 654 | 14 980 |
| y.o.y., % | 7,4 | 1,4 | -18,4 | 16,0 | 15,3 | - | 9,7 |
| Imports (cif) | 59 927 | 64 194 | 51 379 | 57 053 | 57 730 | 19 575 | 18 563 |
| y.o.y., % | 6,5 | 7,1 | -20,0 | 11,0 | 1,2 | - | -5,2 |
| Rate of Coverage (fob/cif), % | 63,9 | 60,5 | 61,7 | 64,4 | 73,4 | 69,8 | 80,7 |
| Without Energy Products | | | | | | | |
| Exports (fob) | 36 568 | 36 688 | 30 151 | 34 297 | 39 286 | 12 808 | 13 736 |
| y.o.y., % | 8,3 | 0,3 | -17,8 | 13,7 | 14,5 | - | 7,2 |
| Imports (cif) | 51 870 | 53 884 | 44 912 | 48 726 | 47 436 | 16 379 | 14 554 |
| y.o.y., % | 7,7 | 3,9 | -16,7 | 8,5 | -2,6 | - | -11,1 |
| Rate of Coverage (fob/cif), % | 70,5 | 68,1 | 67,1 | 70,4 | 82,8 | 78,2 | 94,4 |

Memo:
Energy Products:

| | | | | | | | |
|---------------|-------|--------|-------|-------|--------|-------|-------|
| Exports (fob) | 1 726 | 2 159 | 1 545 | 2 465 | 3 099 | 846 | 1 243 |
| y.o.y., % | -8,6 | 25,1 | -28,4 | 59,5 | 25,7 | - | 46,9 |
| Imports (cif) | 8 056 | 10 310 | 6 467 | 8 327 | 10 294 | 3 196 | 4 009 |
| y.o.y., % | -0,8 | 28,0 | -37,3 | 28,8 | 23,6 | - | 25,4 |

Source: GEE, based on data on International Trade statistics from Statistics Portugal (most up-to-date versions available). Estimates for operators under the assimilation threshold and non-responses are included in Intra-EU trade.

**Table 3 – Trade Balance
Aggregated data (Intra + Extra EU)**

values in Millions of Euros

| january to april | 2011 | 2012 | y.o.y., % |
|-------------------------------|--------|--------|-----------|
| Intra + Extra EU | | | |
| Exports (fob) | 13 654 | 14 980 | 9,7 |
| Imports (cif) | 19 575 | 18 563 | -5,2 |
| Trade Balance (fob-cif) | -5 920 | -3 583 | -39,5 |
| Rate of coverage (fob/cif), % | 69,8 | 80,7 | - |
| Intra EU | | | |
| Exports (fob) | 10 393 | 10 844 | 4,3 |
| Imports (cif) | 14 583 | 13 306 | -8,8 |
| Trade Balance (fob-cif) | -4 190 | -2 462 | -41,2 |
| Rate of coverage (fob/cif), % | 71,3 | 81,5 | - |
| Extra EU | | | |
| Exports (fob) | 3 261 | 4 136 | 26,8 |
| Imports (cif) | 4 992 | 5 256 | 5,3 |
| Trade Balance (fob-cif) | -1 731 | -1 121 | -35,2 |
| Rate of coverage (fob/cif), % | 65,3 | 78,7 | - |

Source: GEE, based on data on International Trade statistics from Statistics Portugal (most up-to-date versions available). Estimates for operators under the assimilation threshold and non-responses are included in Intra-EU trade.

Table 4 – Monthly and quarterly evolution of Portuguese International Trade

Preliminary data version of january to april 2012

| values in Millions of Euros | | | | | | |
|-----------------------------|---------------|--------|-----------|---------------|--------|-----------|
| Intra+Extra EU-27 | IMPORTS (cif) | | | EXPORTS (fob) | | |
| | 2011 | 2012 | y.o.y., % | 2011 | 2012 | y.o.y., % |
| jan | 4 453 | 4 600 | 3,3 | 3 121 | 3 557 | 14,0 |
| feb | 4 636 | 4 570 | -1,4 | 3 314 | 3 770 | 13,8 |
| mar | 5 475 | 4 951 | -9,6 | 3 779 | 4 117 | 9,0 |
| apr | 5 010 | 4 441 | -11,4 | 3 441 | 3 536 | 2,8 |
| may | 5 438 | | | 3 701 | | |
| jun | 4 607 | | | 3 588 | | |
| jul | 4 906 | | | 3 777 | | |
| aug | 4 234 | | | 2 924 | | |
| sep | 5 100 | | | 3 792 | | |
| oct | 4 720 | | | 3 790 | | |
| nov | 4 744 | | | 3 876 | | |
| dec | 4 406 | | | 3 282 | | |
| Q1 | 14 565 | 14 122 | -3,0 | 10 213 | 11 444 | 12,0 |
| Q2 | 15 055 | | | 10 730 | | |
| Q3 | 14 241 | | | 10 493 | | |
| Q4 | 13 869 | | | 10 948 | | |

| Intra EU-27 | IMPORTS (cif) | | | EXPORTS (fob) | | |
|-------------|---------------|--------|-----------|---------------|-------|-----------|
| | 2011 | 2012 | y.o.y., % | 2011 | 2012 | y.o.y., % |
| jan | 3 361 | 3 180 | -5,4 | 2 420 | 2 590 | 7,0 |
| feb | 3 538 | 3 332 | -5,8 | 2 528 | 2 718 | 7,5 |
| mar | 4 128 | 3 565 | -13,6 | 2 894 | 3 006 | 3,9 |
| apr | 3 556 | 3 228 | -9,2 | 2 552 | 2 529 | -0,9 |
| may | 3 778 | | | 2 790 | | |
| jun | 3 397 | | | 2 673 | | |
| jul | 3 487 | | | 2 817 | | |
| aug | 3 013 | | | 2 055 | | |
| sep | 3 568 | | | 2 792 | | |
| oct | 3 566 | | | 2 788 | | |
| nov | 3 474 | | | 2 802 | | |
| dec | 3 284 | | | 2 292 | | |
| Q1 | 11 027 | 10 078 | -8,6 | 7 842 | 8 315 | 6,0 |
| Q2 | 10 731 | | | 8 014 | | |
| Q3 | 10 067 | | | 7 665 | | |
| Q4 | 10 324 | | | 7 882 | | |

| Extra EU-27 | IMPORTS (cif) | | | EXPORTS (fob) | | |
|-------------|---------------|-------|-----------|---------------|-------|-----------|
| | 2011 | 2012 | y.o.y., % | 2011 | 2012 | y.o.y., % |
| jan | 1 093 | 1 420 | 29,9 | 702 | 967 | 37,8 |
| feb | 1 098 | 1 238 | 12,7 | 786 | 1 052 | 33,9 |
| mar | 1 347 | 1 386 | 2,9 | 885 | 1 111 | 25,6 |
| apr | 1 454 | 1 213 | -16,6 | 889 | 1 007 | 13,2 |
| may | 1 660 | | | 911 | | |
| jun | 1 211 | | | 915 | | |
| jul | 1 419 | | | 960 | | |
| aug | 1 222 | | | 869 | | |
| sep | 1 532 | | | 1 000 | | |
| oct | 1 154 | | | 1 002 | | |
| nov | 1 269 | | | 1 074 | | |
| dec | 1 122 | | | 990 | | |
| Q1 | 3 538 | 4 044 | 14,3 | 2 372 | 3 129 | 31,9 |
| Q2 | 4 324 | | | 2 715 | | |
| Q3 | 4 173 | | | 2 828 | | |
| Q4 | 3 545 | | | 3 066 | | |

Source: GEE, based on data on International Trade statistics from Statistics Portugal (most up-to-date versions available). Estimates for operators under the assimilation threshold and non-responses are included in Intra-EU trade.

Exports* of Goods

Table 5 – Portuguese Exports (Intra + Extra EU) of Goods by Group of Products

Of which: products by Chapter (CN-2) above 30 million euros in 2012

| Grp/ CN-2 | Group of Products | Millions of Euros | | Structure (%) | | Growth rates and contributions to growth | | | |
|--------------|--|-------------------|---------------|---------------|--------------|--|----------------------|-------------|----------------------|
| | | jan-apr | | jan-apr | | Last 12 months ^[1] | | jan-apr | |
| | | 2011 | 2012 | 2011 | 2012 | y.o.y. % ^[2] | Contrib. p.p. [3] | y.o.y. % | Contrib. p.p. [3] |
| | TOTAL EXPORTS | 13 654 | 14 980 | 100,0 | 100,0 | 12,7 | 12,7 | 9,7 | 9,7 |
| 000 | Agricultural products and food | 1 425 | 1 558 | 10,4 | 10,4 | 11,0 | 1,3 | 9,4 | 1,0 |
| 22 | Beverages, spirits and vinegar | 279 | 306 | 2,0 | 2,0 | 12,6 | 0,3 | 9,8 | 0,2 |
| 03 | Fish and crustaceans, molluscs and other aquatic invertebrates | 180 | 183 | 1,3 | 1,2 | 4,3 | 0,1 | 2,0 | 0,0 |
| 15 | Animal/vegetable fats and oils and their cleavage products; prepared edible fats; animal/vegetable waxes | 105 | 134 | 0,8 | 0,9 | 34,3 | 0,3 | 27,6 | 0,2 |
| 24 | Tobacco and manufactured tobacco substitutes | 113 | 130 | 0,8 | 0,9 | 10,9 | 0,1 | 15,4 | 0,1 |
| 20 | Preparations of vegetables, fruit, nuts or other parts of plants | 97 | 108 | 0,7 | 0,7 | 10,3 | 0,1 | 11,8 | 0,1 |
| 04 | Dairy produce; birds eggs; natural honey; edible products of animal origin, nes. | 98 | 108 | 0,7 | 0,7 | 2,0 | 0,0 | 9,9 | 0,1 |
| 16 | Preparations of meat, of fish or of crustaceans, molluscs or other aquatic invertebrates | 76 | 87 | 0,6 | 0,6 | 20,2 | 0,1 | 13,8 | 0,1 |
| 08 | Edible fruit and nuts; peel of citrus fruit or melons | 82 | 84 | 0,6 | 0,6 | 8,0 | 0,1 | 3,4 | 0,0 |
| 19 | Preparations of cereals, flour, starch or milk; pastycooks products | 68 | 76 | 0,5 | 0,5 | 14,5 | -0,1 | 10,9 | 0,1 |
| 07 | Edible vegetables and certain roots and tubers | 57 | 53 | 0,4 | 0,4 | -2,2 | 0,0 | -6,0 | 0,0 |
| 02 | Meat and edible meat offal | 32 | 41 | 0,2 | 0,3 | 22,5 | 0,1 | 28,1 | 0,1 |
| 17 | Sugars and sugar confectionery | 47 | 41 | 0,3 | 0,3 | 13,0 | 0,1 | -14,2 | 0,0 |
| 21 | Miscellaneous edible preparations | 36 | 40 | 0,3 | 0,3 | 7,4 | 0,0 | 11,2 | 0,0 |
| 100 | Mineral fuels and oils | 846 | 1 243 | 6,2 | 8,3 | 41,8 | 2,7 | 46,9 | 2,9 |
| 27 | Mineral fuel/oils and products of their distillation; bituminous substances; mineral waxes | 846 | 1 243 | 6,2 | 8,3 | 41,8 | 2,7 | 46,9 | 2,9 |
| 200 | Chemicals | 1 778 | 1 841 | 13,0 | 12,3 | 11,9 | 1,5 | 3,5 | 0,5 |
| 39 | Plastics and articles thereof | 661 | 673 | 4,8 | 4,5 | 6,2 | 0,3 | 1,7 | 0,1 |
| 40 | Rubber and articles thereof | 288 | 354 | 2,1 | 2,4 | 20,8 | 0,4 | 22,7 | 0,5 |
| 29 | Organic chemicals | 332 | 276 | 2,4 | 1,8 | 12,0 | 0,2 | -17,0 | -0,4 |
| 30 | Pharmaceutical products | 180 | 212 | 1,3 | 1,4 | 20,4 | 0,3 | 18,2 | 0,2 |
| 38 | Miscellaneous chemical products | 93 | 90 | 0,7 | 0,6 | 22,0 | 0,1 | -3,5 | 0,0 |
| 32 | Tanning/dyeing extracts; tannins & derivatives; colouring matter; paints & varnishes; mastics; inks | 61 | 53 | 0,4 | 0,4 | -7,3 | 0,0 | -12,0 | -0,1 |
| 34 | Soaps, surf. waxes, candles, modelling pastes, 'dental waxes' and dental preparations, washing/lubricating/polishing or scouring prep. | 36 | 50 | 0,3 | 0,3 | 34,2 | 0,1 | 39,4 | 0,1 |
| 31 | Fertilisers | 37 | 39 | 0,3 | 0,3 | 5,0 | 0,0 | 6,0 | 0,0 |
| 33 | Essential oils and resinoids; perfumery, cosmetic or toilet preparations | 39 | 38 | 0,3 | 0,3 | 1,1 | 0,0 | -2,6 | 0,0 |
| 300 | Wood, cork and paper | 1 215 | 1 195 | 8,9 | 8,0 | 1,5 | 0,1 | -1,7 | -0,1 |
| 48 | Paper and paperboard; articles of paper pulp, of paper or of paperboard | 537 | 514 | 3,9 | 3,4 | -1,9 | -0,1 | -4,4 | -0,2 |
| 45 | Cork and articles of cork | 283 | 283 | 2,1 | 1,9 | 3,8 | 0,1 | -0,1 | 0,0 |
| 44 | Wood and articles of wood; wood charcoal | 195 | 201 | 1,4 | 1,3 | 10,6 | 0,2 | 3,1 | 0,0 |
| 47 | Pulp of wood or of other fibrous cellulosic material; recovered (waste and scrap) paper or paperboard | 178 | 177 | 1,3 | 1,2 | -1,6 | 0,0 | -0,5 | 0,0 |
| 400 | Hides, leather and textiles | 627 | 607 | 4,6 | 4,0 | 4,0 | 0,2 | -3,3 | -0,2 |
| 63 | Other made-up textile articles; sets; worn clothing and worn textile articles; rags | 171 | 151 | 1,3 | 1,0 | -5,2 | -0,1 | -11,6 | -0,1 |
| 56 | Wadding, felt and nonwovens; special yarns; twine, cordage, ropes and cables and articles thereof | 75 | 78 | 0,5 | 0,5 | 15,5 | 0,1 | 4,9 | 0,0 |
| 55 | Man-made staple fibres | 93 | 73 | 0,7 | 0,5 | -6,4 | 0,0 | -21,2 | -0,1 |
| 59 | Impregnated, coated, covered or laminated textile fabrics; textile articles for industrial use | 49 | 58 | 0,4 | 0,4 | 25,3 | 0,1 | 19,2 | 0,1 |
| 52 | Cotton | 59 | 50 | 0,4 | 0,3 | -6,6 | 0,0 | -16,3 | -0,1 |
| 60 | Knitted or crocheted fabrics | 43 | 42 | 0,3 | 0,3 | 3,2 | 0,0 | -3,9 | 0,0 |
| 500 | Clothing and footwear | 1 296 | 1 326 | 9,5 | 8,9 | 6,8 | 0,7 | 2,3 | 0,2 |
| 61 | Articles of apparel and clothing accessories, knitted or crocheted | 528 | 520 | 3,9 | 3,5 | 1,8 | 0,1 | -1,4 | -0,1 |
| 64 | Footwear, gaiters and the like; parts of such articles | 496 | 502 | 3,6 | 3,4 | 9,5 | 0,3 | 1,3 | 0,0 |
| 62 | Articles of apparel and clothing accessories, not knitted or crocheted | 259 | 287 | 1,9 | 1,9 | 11,5 | 0,2 | 10,9 | 0,2 |
| 600 | Ores and metals | 1 575 | 1 785 | 11,5 | 11,9 | 16,6 | 1,8 | 13,3 | 1,5 |
| 72 | Iron and steel | 423 | 420 | 3,1 | 2,8 | 9,0 | 0,2 | -0,8 | 0,0 |
| 73 | Articles of iron or steel | 333 | 412 | 2,4 | 2,8 | 20,5 | 0,5 | 23,9 | 0,6 |
| 71 | Natural/cultured pearls, precious stones, precious metals and articles thereof; imitation jewellery; coin | 147 | 280 | 1,1 | 1,9 | 115,5 | 1,0 | 91,0 | 1,0 |
| 76 | Aluminium and articles thereof | 197 | 163 | 1,4 | 1,1 | -9,5 | -0,1 | -17,2 | -0,2 |
| 26 | Ores, slag and ash | 168 | 149 | 1,2 | 1,0 | -8,0 | -0,1 | -10,9 | -0,1 |
| 25 | Salt; sulphur; earths and stone; plastering materials, lime and cement | 83 | 106 | 0,6 | 0,7 | 6,1 | 0,0 | 28,1 | 0,2 |
| 74 | Copper and articles thereof | 83 | 103 | 0,6 | 0,7 | 26,4 | 0,1 | 23,6 | 0,1 |
| 83 | Miscellaneous articles of base metal | 80 | 88 | 0,6 | 0,6 | 9,5 | 0,1 | 10,2 | 0,1 |
| 82 | Tools, implements, cutlery, spoons and forks, of base metal; parts thereof of base metal | 46 | 52 | 0,3 | 0,3 | 13,5 | 0,0 | 11,7 | 0,0 |
| 700 | Machinery | 1 969 | 2 212 | 14,4 | 14,8 | 12,4 | 1,8 | 12,4 | 1,8 |
| 85 | Electrical machinery and equipment; sound recorders/reproducers; parts and accessories thereof | 1 182 | 1 278 | 8,7 | 8,5 | 11,2 | 1,0 | 8,1 | 0,7 |
| 84 | Nuclear reactors, boilers, machinery and mechanical appliances; parts thereof | 787 | 934 | 5,8 | 6,2 | 14,3 | 0,8 | 18,7 | 1,1 |
| 800 | Transport equipment | 1 840 | 2 077 | 13,5 | 13,9 | 17,8 | 2,3 | 12,8 | 1,7 |
| 87 | Vehicles other than railway or tramway rolling stock, and parts and accessories thereof | 1 794 | 2 003 | 13,1 | 13,4 | 16,9 | 2,1 | 11,6 | 1,5 |
| 88 | Aircraft, spacecraft, and parts thereof | 38 | 52 | 0,3 | 0,3 | 34,3 | 0,1 | 39,2 | 0,1 |
| 900 | Other manufactured goods | 1 082 | 1 136 | 7,9 | 7,6 | 4,8 | 0,4 | 4,9 | 0,4 |
| 94 | Furniture; lamps & lighting fittings, nes.; illuminated signs/nameplates and the like; prefab. buildings | 400 | 411 | 2,9 | 2,7 | 7,3 | 0,2 | 2,9 | 0,1 |
| 69 | Ceramic products | 189 | 192 | 1,4 | 1,3 | 2,6 | 0,0 | 1,6 | 0,0 |
| 70 | Glass and glassware | 161 | 160 | 1,2 | 1,1 | 2,5 | 0,0 | -0,9 | 0,0 |
| 90 | Optical/photographic/cinematographic/measuring/checking/precision/medical/surgical instruments and apparatus | 127 | 148 | 0,9 | 1,0 | 7,2 | 0,1 | 16,3 | 0,2 |
| 68 | Articles of stone, plaster, cement, asbestos, mica or similar materials | 117 | 133 | 0,9 | 0,9 | 9,9 | 0,1 | 13,6 | 0,1 |
| Memo: | | | | | | | | | |
| | Total without Energy Products | 12 808 | 13 736 | 93,8 | 91,7 | 10,7 | 10,0 | 7,2 | 6,8 |

Source: GEE, based on data on International Trade statistics from Statistics Portugal (most up-to-date versions available). Estimates for operators under the assimilation threshold and non-responses are included in Intra-EU trade.

Notes:

*Sum of Exports to EU and Exports to third countries.

Composition by Group of Products - 000 (Chap. 01 to 24 of CN) - 100 (Chap. 27) - 200 (Chap. 28 to 40) - 300 (Chap. 44 to 49) - 400 (Chap. 41 to 43, 50 to 60 and 63) - 500 (Chap. 61, 62, 64 to 67) - 600 (Chap. 25, 26, 71 to 83) - 700 (Chap. 84 and 85) - 800 (Chap. 86 to 89) - 900 (Chap. 68 to 70 and 90 to 99).

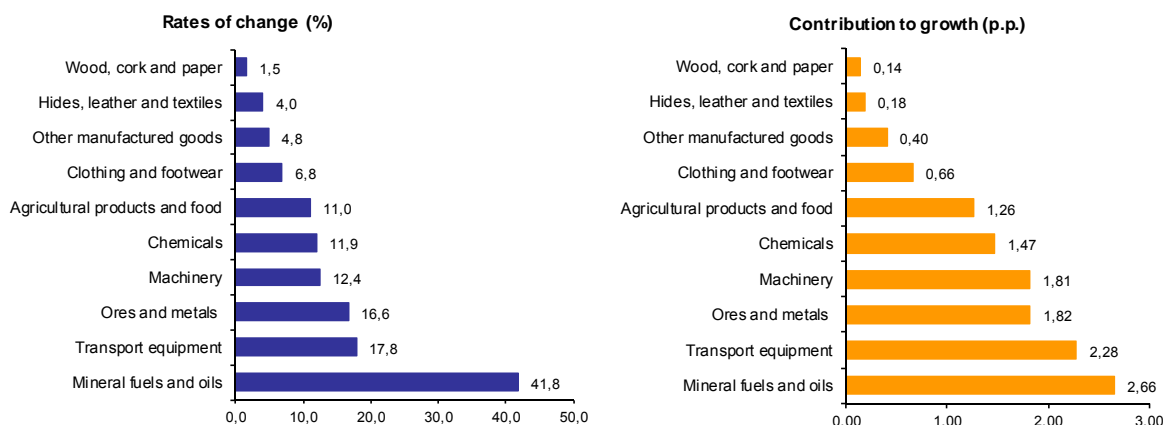
[1] 12 months ending in april 2012.

[2] (may 11-apr 12)/(may 10-apr 11) x 100 - 100.

[3] Contribution to the growth rate of exports, shift share analysis: (rate of change) x (weight in the previous period) x 100.

Chart 2 - Growth rates of exports of Portuguese goods by group of products and its contribution to growth (Intra + Extra-EU)

Previous 12 months ending in april 2012



Source: Table 5 – Portuguese Exports (Intra + Extra EU) of Goods by Group of Products.

Table 6 - Portuguese Exports of Goods by Group of Products (Extra-EU)

Preliminary data version of january to april 2012

| Group of Products | Extra-EU (Fob) | | values in Millions of Euros | | | | |
|------------------------------------|------------------|--------------|-------------------------------|---------------|-------------------------------|--------------|--------------|
| | january to april | | y.o.y., % | | Structure (%) | | |
| | 2011 | 2012 | Last 12 months ^[1] | jan-apr 12/11 | Last 12 months ^[1] | jan-apr | |
| | | | | | | 2011 | 2012 |
| Total Exports | 3 261 | 4 136 | 23,3 | 26,8 | 100,0 | 100,0 | 100,0 |
| 000 Agricultural products and food | 418 | 457 | 17,9 | 9,2 | 12,8 | 12,8 | 11,0 |
| 100 Mineral fuels and oils | 474 | 741 | 42,4 | 56,2 | 17,2 | 14,5 | 17,9 |
| 200 Chemicals | 389 | 411 | 21,9 | 5,6 | 10,6 | 11,9 | 9,9 |
| 300 Wood, cork and paper | 323 | 337 | 11,2 | 4,5 | 9,0 | 9,9 | 8,2 |
| 400 Hides, leather and textiles | 168 | 164 | 5,8 | -1,9 | 4,3 | 5,1 | 4,0 |
| 500 Clothing and footwear | 101 | 116 | 18,7 | 14,3 | 2,9 | 3,1 | 2,8 |
| 600 Ores and metals | 390 | 529 | 31,8 | 35,6 | 11,6 | 12,0 | 12,8 |
| 700 Machinery | 575 | 746 | 19,3 | 29,7 | 17,6 | 17,6 | 18,0 |
| 800 Transport equipment | 168 | 343 | 42,9 | 104,2 | 6,7 | 5,2 | 8,3 |
| 900 Other manufactured goods | 254 | 291 | 9,5 | 14,6 | 7,3 | 7,8 | 7,0 |

Memo:

| | | | | | | | |
|--------------------------------------|-------|-------|------|------|------|------|------|
| <i>Total without Energy Products</i> | 2 787 | 3 395 | 19,9 | 21,8 | 82,8 | 85,5 | 82,1 |
|--------------------------------------|-------|-------|------|------|------|------|------|

Source: GEE, based on data on International Trade statistics from Statistics Portugal (most up-to-date versions available).

Note:

Composition by Group of Products - 000 (Chap. 01 to 24 of CN) - 100 (Chap. 27) - 200 (Chap. 28 to 40) - 300 (Chap. 44 to 49) - 400 (Chap. 41 to 43, 50 to 60 and 63) - 500 (Chap. 61, 62, 64 to 67) - 600 (Chap. 25, 26, 71 to 83) - 700 (Chap. 84 and 85) - 800 (Chap. 86 to 89) - 900 (Chap. 68 to 70 and 90 to 99).

[1] 12 months ending in april 2012

**Table - 7 – Exports (Intra+Extra EU) of Portuguese goods by Group of Products (2007-2012)
sorted in descending order of their relative weight in 2011**

Growth rate and Contribution to growth

| Intra + Extra EU (Fob) | | | | | | | | | | |
|------------------------|--|-------------------|-------------|-------------|--------------|-------------|-------------|--------------------------------|-------------|--------------|
| Grp. and CN-2 | Description | Share in 2011 (%) | y.o.y., % | | | | | Contrib. (p.p.) ^[1] | | |
| | | | 2007 | 2008 | 2009 | 2010 | 2011 | jan-apr 2012 | 2011 | jan-apr 2012 |
| | TOTAL | 100,0 | 7,4 | 1,4 | -18,4 | 16,0 | 15,3 | 9,7 | 15,3 | 9,7 |
| 700 | Machinery | 14,5 | 7,6 | -0,8 | -31,0 | 6,3 | 11,6 | 12,4 | 1,7 | 1,8 |
| 85 | Electrical machinery and equipment; sound recorders/reproducers; parts and accessories thereof | 8,7 | 9,3 | -1,4 | -37,4 | 15,5 | 13,0 | 8,1 | 1,2 | 0,7 |
| 84 | Nuclear reactors, boilers, machinery and mechanical appliances; parts thereof | 5,8 | 5,1 | 0,0 | -21,4 | -4,8 | 9,6 | 18,7 | 0,6 | 1,1 |
| 800 | Transport equipment | 13,3 | 2,8 | -2,7 | -21,4 | 22,2 | 23,5 | 12,8 | 2,9 | 1,7 |
| 87 | Vehicles other than railway or tramway rolling stock, and parts and accessories thereof | 12,7 | -0,7 | -3,5 | -19,5 | 23,2 | 24,0 | 11,6 | 2,8 | 1,5 |
| 200 | Chemicals | 12,4 | 10,1 | 2,4 | -14,6 | 23,0 | 20,8 | 3,5 | 2,5 | 0,5 |
| 39 | Plastics and articles thereof | 4,7 | 12,9 | 0,8 | -16,5 | 29,8 | 11,8 | 1,7 | 0,6 | 0,1 |
| 000 | Agricultural products and food | 11,3 | 17,1 | 15,0 | -5,0 | 7,3 | 11,8 | 9,4 | 1,4 | 1,0 |
| 600 | Ores and metals | 11,2 | 11,5 | -1,5 | -23,9 | 23,3 | 23,4 | 13,3 | 2,4 | 1,5 |
| 500 | Clothing and footwear | 9,3 | 1,9 | -2,8 | -11,4 | 3,8 | 10,2 | 2,3 | 1,0 | 0,2 |
| 61 | Articles of apparel and clothing accessories, knitted or crocheted | 3,7 | 0,6 | -5,5 | -11,9 | 1,5 | 6,0 | -1,4 | 0,2 | -0,1 |
| 64 | Footwear, gaiters and the like; parts of such articles | 3,6 | 2,7 | 2,6 | -8,2 | 5,1 | 15,2 | 1,3 | 0,6 | 0,0 |
| 300 | Wood, cork and paper | 8,5 | -3,5 | 1,9 | -12,1 | 26,0 | 7,1 | -1,7 | 0,6 | -0,1 |
| 48 | Paper and paperboard; articles of paper pulp, of paper or of paperboard | 3,8 | 0,2 | 8,3 | -4,5 | 41,0 | 3,7 | -4,4 | 0,2 | -0,2 |
| 900 | Other manufactured goods | 7,8 | 29,6 | -3,2 | -9,2 | 4,5 | 5,2 | 4,9 | 0,4 | 0,4 |
| 100 | Mineral fuels and oils | 7,3 | -8,6 | 25,1 | -28,4 | 59,5 | 25,7 | 46,9 | 1,7 | 2,9 |
| 27 | Mineral fuel/oils and products of their distillation; bituminous substances; mineral waxes | 7,3 | -8,6 | 25,1 | -28,4 | 59,5 | 25,7 | 46,9 | 1,7 | 2,9 |
| 400 | Hides, leather and textiles | 4,3 | 3,7 | -5,6 | -16,3 | 13,7 | 12,0 | -3,3 | 0,5 | -0,2 |

Source: GEE, based on data on International Trade statistics from Statistics Portugal (most up-to-date versions available). Estimates for operators under the assimilation threshold and non-responses are included in Intra-EU trade.

Note:

[1] Contributions to growth, shift share analysis: (rate of change) x (weight in the previous period) ÷ 100.

Table 8 – Exports (Intra+Extra EU) of goods to selected markets

Preliminary data version of January to April 2012

| Intra + Extra-EU (Fob) | | values in Millions of Euros | | | | | | |
|------------------------|---------------|-----------------------------|---------------|--------------|--|------------------------------|-------------|------------------------------|
| Destination | jan-apr | | Structure (%) | | Growth rates and contributions to growth | | | |
| | 2011 | 2012 | jan-apr | | Last 12 months ^[1] | | jan-apr | |
| | | | 2011 | 2012 | y.o.y., % ^[2] | Contrib. p.p. ^[3] | y.o.y. % | Contrib. p.p. ^[3] |
| TOTAL | 13 654 | 14 980 | 100,0 | 100,0 | 12,7 | 12,7 | 9,7 | 9,7 |
| INTRA EU(27) | 10 393 | 10 844 | 76,1 | 72,4 | 9,2 | 6,9 | 4,3 | 3,3 |
| of which: | | | | | | | | |
| EU-15 | 9 985 | 10 370 | 73,1 | 69,2 | 8,9 | 6,4 | 3,9 | 2,8 |
| Spain | 3 558 | 3 397 | 26,1 | 22,7 | 1,9 | 0,5 | -4,5 | -1,2 |
| Germany | 1 888 | 2 034 | 13,8 | 13,6 | 14,2 | 1,9 | 7,7 | 1,1 |
| France | 1 750 | 1 846 | 12,8 | 12,3 | 11,6 | 1,4 | 5,5 | 0,7 |
| United Kingdom | 679 | 757 | 5,0 | 5,1 | 8,9 | 0,5 | 11,4 | 0,6 |
| Netherlands | 550 | 552 | 4,0 | 3,7 | 9,9 | 0,4 | 0,5 | 0,0 |
| Italy | 533 | 530 | 3,9 | 3,5 | 4,7 | 0,2 | -0,5 | 0,0 |
| Belgium | 410 | 488 | 3,0 | 3,3 | 27,3 | 0,8 | 19,1 | 0,6 |
| Sweden | 152 | 168 | 1,1 | 1,1 | 10,1 | 0,1 | 10,8 | 0,1 |
| Denmark | 85 | 102 | 0,6 | 0,7 | 6,8 | 0,0 | 19,9 | 0,1 |
| Enlargement | 408 | 474 | 3,0 | 3,2 | 15,0 | 0,5 | 16,0 | 0,5 |
| Poland | 118 | 133 | 0,9 | 0,9 | 25,4 | 0,2 | 13,0 | 0,1 |
| EXTRA EU(27) | 3 261 | 4 136 | 23,9 | 27,6 | 23,3 | 5,8 | 26,8 | 6,4 |
| of which: | | | | | | | | |
| Angola | 634 | 820 | 4,6 | 5,5 | 28,1 | 1,4 | 29,3 | 1,4 |
| United States | 458 | 660 | 3,4 | 4,4 | 26,8 | 0,9 | 43,9 | 1,5 |
| Brazil | 180 | 194 | 1,3 | 1,3 | 22,1 | 0,3 | 8,1 | 0,1 |
| Mexico | 126 | 67 | 0,9 | 0,4 | -8,5 | -0,1 | -46,4 | -0,4 |
| China | 100 | 301 | 0,7 | 2,0 | 128,2 | 0,9 | 200,7 | 1,5 |
| Morocco | 112 | 156 | 0,8 | 1,0 | 30,9 | 0,3 | 39,4 | 0,3 |
| Switzerland | 122 | 135 | 0,9 | 0,9 | 11,0 | 0,1 | 10,7 | 0,1 |
| Algeria | 137 | 104 | 1,0 | 0,7 | 15,9 | 0,1 | -24,1 | -0,2 |
| Turkey | 102 | 118 | 0,8 | 0,8 | 12,6 | 0,1 | 15,2 | 0,1 |
| Cape Verde | 87 | 72 | 0,6 | 0,5 | -8,6 | -0,1 | -17,3 | -0,1 |
| Memo: | | | | | | | | |
| Gibraltar | 49 | 98 | 0,4 | 0,7 | 70,3 | 0,3 | 97,5 | 0,4 |
| ACPOL ^[4] | 807 | 1 026 | 5,9 | 6,8 | 26,0 | 1,7 | 27,1 | 1,6 |
| EFTA | 153 | 175 | 1,1 | 1,2 | 12,8 | 0,1 | 14,5 | 0,2 |

Source: GEE, based on data on International Trade statistics from Statistics Portugal (most up-to-date versions available). Estimates for operators under the assimilation threshold and non-responses are included in Intra-EU trade.

Notes:

Countries ranked in descending order of value in 2011.

[1] 12 months ending in april 2012

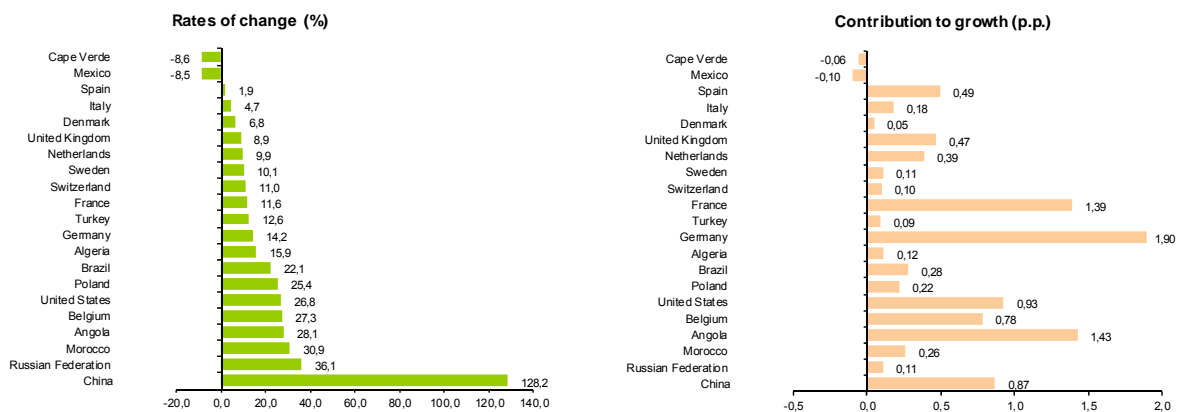
[2] (may 11-apr 12)/(may 10-apr 11) x 100 - 100

[3] Contributions to growth, shift share analysis: (rate of change) x (weight in the previous period) ÷ 100.

[4] African Countries of Portuguese Official Language.

Chart 3 - Growth rates of Exports (Intra + Extra-EU) to selected markets and corresponding contributions to growth

Previous 12 months ending in april 2012



Source: Table 8 – Exports (Intra+Extra EU) of goods from selected markets.

Table 9 - Exports of goods to selected markets

Preliminary data version of january to april 2012

| Extra-EU (Fob) | | values in Millions of Euros | | | | | | |
|----------------------|--------------|-----------------------------|---------------|--------------|--------------|--------------|-------------------------------|---------------|
| Destination | jan-apr | | Structure (%) | | | | y.o.y., % | |
| | 2011 | 2012 | Annual | | jan-apr | | Last 12 months ^[1] | jan-apr 12/11 |
| | | | 2006 | 2011 | 2011 | 2012 | | |
| EXTRA EU (27) | 3 261 | 4 136 | 100,0 | 100,0 | 100,0 | 100,0 | 23,3 | 26,8 |
| of which: | | | | | | | | |
| Angola | 634 | 820 | 15,5 | 21,3 | 19,4 | 19,8 | 28,1 | 29,3 |
| United States | 458 | 660 | 27,0 | 13,6 | 14,1 | 15,9 | 26,8 | 43,9 |
| Brazil | 180 | 194 | 3,3 | 5,3 | 5,5 | 4,7 | 22,1 | 8,1 |
| Mexico | 126 | 67 | 1,8 | 4,2 | 3,9 | 1,6 | -8,5 | -46,4 |
| China | 100 | 301 | 2,7 | 3,6 | 3,1 | 7,3 | 128,2 | 200,7 |
| Morocco | 112 | 156 | 2,1 | 3,5 | 3,4 | 3,8 | 30,9 | 39,4 |
| Switzerland | 122 | 135 | 3,5 | 3,4 | 3,7 | 3,3 | 11,0 | 10,7 |
| Algeria | 137 | 104 | 0,9 | 3,3 | 4,2 | 2,5 | 15,9 | -24,1 |
| Turkey | 102 | 118 | 3,0 | 2,7 | 3,1 | 2,9 | 12,6 | 15,2 |
| Cape Verde | 87 | 72 | 2,4 | 2,3 | 2,7 | 1,7 | -8,6 | -17,3 |
| Memo: | | | | | | | | |
| Gibraltar | 49 | 98 | 0,4 | 2,3 | 1,5 | 2,4 | 70,3 | 97,5 |
| ACPOL ^[2] | 807 | 1 026 | 19,6 | 26,6 | 24,8 | 24,8 | 26,0 | 27,1 |
| EFTA | 153 | 175 | 5,0 | 4,3 | 4,7 | 4,2 | 12,8 | 14,5 |

Source: GEE, based on data on International Trade statistics from Statistics Portugal (most up-to-date versions available).

Note:

Countries ranked in descending order of value in 2011.

[1] (may 11-apr 12)/(may 10-apr 11) x 100 - 100

[2] African Countries of Portuguese Official Language.

Table 10 - Exports (Intra + Extra-EU) of Portuguese Goods to a selection of markets (2007-2012) -

– structure (%)

Main markets in 2011

| Destination | 2007 | 2008 | 2009 | 2010 | 2011 | jan-apr | |
|---------------------|--------------|--------------|--------------|--------------|--------------|--------------|--------------|
| | | | | | | 2011 | 2012 |
| Total | 100,0 | 100,0 | 100,0 | 100,0 | 100,0 | 100,0 | 100,0 |
| INTRA EU(27) | 77,1 | 74,4 | 75,4 | 75,0 | 74,1 | 76,1 | 72,4 |
| EU-15 | 74,7 | 71,6 | 72,5 | 71,9 | 71,0 | 73,1 | 69,2 |
| Spain | 28,7 | 27,9 | 27,2 | 26,6 | 24,8 | 26,1 | 22,7 |
| Germany | 12,9 | 12,8 | 13,0 | 13,0 | 13,6 | 13,8 | 13,6 |
| France | 12,6 | 11,8 | 12,4 | 11,8 | 12,0 | 12,8 | 12,3 |
| United Kingdom | 6,0 | 5,5 | 5,6 | 5,5 | 5,1 | 5,0 | 5,1 |
| Netherlands | 3,5 | 3,3 | 3,6 | 3,8 | 3,9 | 4,0 | 3,7 |
| Italy | 4,1 | 3,7 | 3,7 | 3,8 | 3,7 | 3,9 | 3,5 |
| Belgium | 2,6 | 2,5 | 2,5 | 2,9 | 3,1 | 3,0 | 3,3 |
| Enlargement | 2,4 | 2,8 | 2,8 | 3,1 | 3,1 | 3,0 | 3,2 |
| EXTRA EU(27) | 22,9 | 25,6 | 24,6 | 25,0 | 25,9 | 23,9 | 27,6 |
| Angola | 4,4 | 5,8 | 7,1 | 5,2 | 5,5 | 4,6 | 5,5 |
| United States | 4,7 | 3,4 | 3,2 | 3,6 | 3,5 | 3,4 | 4,4 |
| Brazil | 0,7 | 0,8 | 0,9 | 1,2 | 1,4 | 1,3 | 1,3 |
| Mexico | 0,3 | 0,6 | 0,6 | 1,1 | 1,1 | 0,9 | 0,4 |
| China | 0,5 | 0,5 | 0,7 | 0,6 | 0,9 | 0,7 | 2,0 |
| Morocco | 0,5 | 0,7 | 0,7 | 0,8 | 0,9 | 0,8 | 1,0 |
| Switzerland | 0,7 | 0,8 | 0,9 | 0,9 | 0,9 | 0,9 | 0,9 |
| Algeria | 0,2 | 0,5 | 0,6 | 0,6 | 0,8 | 1,0 | 0,7 |
| Turkey | 0,6 | 0,6 | 0,6 | 0,7 | 0,7 | 0,8 | 0,8 |
| Cape Verde | 0,6 | 0,7 | 0,7 | 0,7 | 0,6 | 0,6 | 0,5 |

Source: GEE, based on data on International Trade statistics from Statistics Portugal (most up-to-date versions available). Estimates for operators under the assimilation threshold and non-responses are included in Intra-EU trade.

Table 11 - Exports (Intra + Extra-EU) of Portuguese Goods to a selection of markets (2008-2012) – structure (%), growth rate and contribution to growth ^[1]
Main markets in 2011

| Destination | Share in 2011 (%) | y.o.y., % | | | | | Contrib. (p.p.) ^[1] | |
|----------------------|-------------------|-------------|--------------|-------------|-------------|-------------|--------------------------------|--------------|
| | | 2008 | 2009 | 2010 | 2011 | 2012 | 2011 | jan-apr 2012 |
| | | | | | | jan-apr | | |
| Total | 100,0 | 1,4 | -18,4 | 16,0 | 15,3 | 9,7 | 15,3 | 9,7 |
| INTRA EU (27) | 74,1 | -2,1 | -17,3 | 15,4 | 13,9 | 4,3 | 10,4 | 3,3 |
| EU-15 | 71,0 | -2,8 | -17,4 | 15,0 | 13,8 | 3,9 | 10,0 | 2,8 |
| Spain | 24,8 | -1,4 | -20,3 | 13,2 | 7,9 | -4,5 | 2,1 | -1,2 |
| Germany | 13,6 | -0,1 | -17,1 | 16,5 | 20,4 | 7,7 | 2,7 | 1,1 |
| France | 12,0 | -5,0 | -14,2 | 10,3 | 17,6 | 5,5 | 2,1 | 0,7 |
| United Kingdom | 5,1 | -8,1 | -15,8 | 12,6 | 7,0 | 11,4 | 0,4 | 0,6 |
| Netherlands | 3,9 | -3,6 | -10,2 | 22,4 | 18,6 | 0,5 | 0,7 | 0,0 |
| Italy | 3,7 | -9,4 | -17,1 | 17,4 | 11,2 | -0,5 | 0,4 | 0,0 |
| Belgium | 3,1 | -1,6 | -18,9 | 34,7 | 26,4 | 19,1 | 0,8 | 0,6 |
| Enlargement | 3,1 | 19,2 | -16,1 | 25,5 | 15,1 | 16,0 | 0,5 | 0,5 |
| EXTRA EU (27) | 25,9 | 13,4 | -21,5 | 17,7 | 19,5 | 26,8 | 4,9 | 6,4 |
| Angola | 5,5 | 34,3 | -0,8 | -14,6 | 22,0 | 29,3 | 1,1 | 1,4 |
| United States | 3,5 | -25,0 | -24,5 | 31,1 | 12,9 | 43,9 | 0,5 | 1,5 |
| Brazil | 1,4 | 23,9 | -7,9 | 49,5 | 33,0 | 8,1 | 0,4 | 0,1 |
| Mexico | 1,1 | 85,3 | -8,5 | 98,8 | 14,2 | -46,4 | 0,2 | -0,4 |
| China | 0,9 | 1,6 | 20,5 | 6,0 | 69,7 | 200,7 | 0,4 | 1,5 |
| Morocco | 0,9 | 37,1 | -21,2 | 40,4 | 28,1 | 39,4 | 0,2 | 0,3 |
| Switzerland | 0,9 | 12,6 | -3,5 | 15,4 | 11,6 | 10,7 | 0,1 | 0,1 |
| Algeria | 0,8 | 126,9 | 9,0 | 8,9 | 66,8 | -24,1 | 0,4 | -0,2 |
| Turkey | 0,7 | -2,1 | -8,0 | 32,0 | 12,7 | 15,2 | 0,1 | 0,1 |
| Cape Verde | 0,6 | 13,0 | -13,5 | 18,3 | -3,1 | -17,3 | 0,0 | -0,1 |

Source: GEE, based on data on International Trade statistics from Statistics Portugal (most up-to-date versions available). Estimates for operators under the assimilation threshold and non-responses are included in Intra-EU trade.

Note:

[1] Contributions to growth, shift share analysis: (rate of change) x (weight in the previous period) ÷ 100.

Imports* of Goods

Table 12 - Portuguese Imports of goods by Group of Products

Of which: products by Chapter (CN-2) above 55 million euros in 2012

Intra + Extra EU (Cif)

| Grp/ CN-2 | Groups of Products | Millions of Euros | | Structure (%) | | Growth rates and contributions to growth | | | |
|--------------|--|-------------------|---------------|---------------|--------------|--|----------------------|--------------|----------------------|
| | | jan-apr | | jan-apr | | Last 12 months ^[1] | | jan apr | |
| | | 2011 | 2012 | 2011 | 2012 | y.o.y. % ^[2] | Contrib. p.p. [3] | y.o.y. % | Contrib. p.p. [3] |
| | TOTAL IMPORTS | 19 575 | 18 563 | 100,0 | 100,0 | -3,7 | -3,7 | -5,2 | -5,2 |
| 000 | Agricultural products and food | 2 853 | 2 645 | 14,6 | 14,2 | 2,2 | 0,3 | -7,3 | -1,1 |
| 03 | Fish and crustaceans, molluscs and other aquatic invertebrates | 440 | 419 | 2,2 | 2,3 | 1,3 | 0,0 | -4,8 | -0,1 |
| 10 | Cereals | 285 | 266 | 1,5 | 1,4 | 8,8 | 0,1 | -6,7 | -0,1 |
| 02 | Meat and edible meat offal | 269 | 223 | 1,4 | 1,2 | -7,3 | -0,1 | -16,9 | -0,2 |
| 15 | Animal/vegetable fats and oils and their cleavage products; prepared edible fats; animal/vegetable waxes | 198 | 168 | 1,0 | 0,9 | 14,6 | 0,1 | -15,0 | -0,2 |
| 04 | Dairy produce; birds eggs; natural honey; edible products of animal origin, nes. | 150 | 156 | 0,8 | 0,8 | 3,8 | 0,0 | 3,7 | 0,0 |
| 12 | Oil seeds/oleaginous fruits/miscellaneous grains, seeds and fruits/industrial or medicinal plants/straw and fodder | 198 | 145 | 1,0 | 0,8 | -10,1 | -0,1 | -27,1 | -0,3 |
| 19 | Preparations of cereals, flour, starch or milk; pastrycooks products | 137 | 139 | 0,7 | 0,7 | 3,2 | 0,0 | 1,8 | 0,0 |
| 08 | Edible fruit and nuts; peel of citrus fruit or melons | 147 | 134 | 0,8 | 0,7 | -11,9 | -0,1 | -8,6 | -0,1 |
| 23 | Residues and waste from the food industries; prepared animal fodder | 116 | 114 | 0,6 | 0,6 | 2,4 | 0,0 | -1,7 | 0,0 |
| 07 | Edible vegetables and certain roots and tubers | 138 | 110 | 0,7 | 0,6 | -15,4 | -0,1 | -20,2 | -0,1 |
| 17 | Sugars and sugar confectionery | 114 | 101 | 0,6 | 0,5 | 10,3 | 0,0 | -10,8 | -0,1 |
| 21 | Miscellaneous edible preparations | 104 | 99 | 0,5 | 0,5 | 0,3 | 0,0 | -5,2 | 0,0 |
| 22 | Beverages, spirits and vinegar | 104 | 96 | 0,5 | 0,5 | -1,0 | 0,0 | -7,2 | 0,0 |
| 20 | Preparations of vegetables, fruit, nuts or other parts of plants | 83 | 82 | 0,4 | 0,4 | 5,0 | 0,0 | -1,7 | 0,0 |
| 09 | Coffee, tea, maté and spices | 66 | 80 | 0,3 | 0,4 | 31,4 | 0,1 | 22,1 | 0,1 |
| 16 | Preparations of meat, of fish or of crustaceans, molluscs or other aquatic invertebrates | 66 | 64 | 0,3 | 0,3 | 3,6 | 0,0 | -3,6 | 0,0 |
| 24 | Tobacco and manufactured tobacco substitutes | 57 | 61 | 0,3 | 0,3 | 58,6 | 0,1 | 6,9 | 0,0 |
| 01 | Live animals | 60 | 61 | 0,3 | 0,3 | 5,6 | 0,0 | 0,7 | 0,0 |
| 100 | Mineral fuels and oils | 3 196 | 4 009 | 16,3 | 21,6 | 23,4 | 3,6 | 25,4 | 4,2 |
| 27 | Mineral fuel/oils and products of their distillation; bituminous substances; mineral waxes | 3 196 | 4 009 | 16,3 | 21,6 | 23,4 | 3,6 | 25,4 | 4,2 |
| 200 | Chemicals | 3 136 | 3 088 | 16,0 | 16,6 | 1,4 | 0,2 | -1,5 | -0,2 |
| 39 | Plastics and articles thereof | 845 | 771 | 4,3 | 4,2 | -2,4 | -0,1 | -8,8 | -0,4 |
| 30 | Pharmaceutical products | 703 | 684 | 3,6 | 3,7 | -3,6 | -0,1 | -2,7 | -0,1 |
| 29 | Organic chemicals | 359 | 450 | 1,8 | 2,4 | 19,8 | 0,3 | 25,1 | 0,5 |
| 40 | Rubber and articles thereof | 276 | 270 | 1,4 | 1,5 | 6,2 | 0,1 | -2,3 | 0,0 |
| 38 | Miscellaneous chemical products | 277 | 259 | 1,4 | 1,4 | 7,3 | 0,1 | -6,5 | -0,1 |
| 32 | Tanning/dyeing extracts; tannins & derivatives; colouring matter; paints & varnishes; mastics; inks | 171 | 162 | 0,9 | 0,9 | -0,9 | 0,0 | -5,0 | 0,0 |
| 33 | Essential oils and resinoids; perfumery, cosmetic or toilet preparations | 166 | 158 | 0,8 | 0,8 | -4,9 | 0,0 | -4,7 | 0,0 |
| 34 | Soaps, artif. waxes, candles, modelling pastes, 'dental waxes' and dental preparations, washing/lubricating/polishing or scouring prep. | 116 | 120 | 0,6 | 0,6 | 1,6 | 0,0 | 3,2 | 0,0 |
| 28 | Inorganic chemicals; organic or inorganic compounds of precious metals/rare-earth metals/radioactive elements/Isotopes | 110 | 106 | 0,6 | 0,6 | 9,7 | 0,0 | -3,4 | 0,0 |
| 31 | Fertilisers | 64 | 64 | 0,3 | 0,3 | -14,2 | 0,0 | 0,6 | 0,0 |
| 300 | Hides, wood, cork and paper | 913 | 768 | 4,7 | 4,1 | -6,7 | -0,3 | -15,9 | -0,7 |
| 48 | Paper and paperboard; articles of paper pulp, of paper or of paperboard | 368 | 296 | 1,9 | 1,6 | -7,1 | -0,1 | -19,5 | -0,4 |
| 44 | Wood and articles of wood; wood charcoal | 216 | 164 | 1,1 | 0,9 | -13,5 | -0,1 | -23,9 | -0,3 |
| 41 | Raw hides and skins (other than furskins) and leather | 135 | 118 | 0,7 | 0,6 | -1,6 | 0,0 | -12,4 | -0,1 |
| 42 | Articles of leather; saddlery and harness; travel goods, handbags and similar containers; articles of animal gut (other than silkworm gut) | 71 | 72 | 0,4 | 0,4 | -5,8 | 0,0 | 1,3 | 0,0 |
| 400 | Textiles, clothing and footwear | 1 340 | 1 232 | 6,8 | 6,6 | -4,4 | -0,3 | -8,0 | -0,6 |
| 62 | Articles of apparel and clothing accessories, not knitted or crocheted | 291 | 274 | 1,5 | 1,5 | -3,2 | 0,0 | -5,7 | -0,1 |
| 61 | Articles of apparel and clothing accessories, knitted or crocheted | 276 | 259 | 1,4 | 1,4 | -2,2 | 0,0 | -6,2 | -0,1 |
| 64 | Footwear, gaiters and the like; parts of such articles | 199 | 205 | 1,0 | 1,1 | 2,2 | 0,0 | 3,0 | 0,0 |
| 52 | Cotton | 155 | 113 | 0,8 | 0,6 | -20,1 | -0,2 | -27,3 | -0,2 |
| 54 | Man-made filaments; strip and the like of man-made textile materials | 96 | 96 | 0,5 | 0,5 | 4,4 | 0,0 | -0,1 | 0,0 |
| 55 | Man-made staple fibres | 95 | 72 | 0,5 | 0,4 | -9,8 | 0,0 | -24,0 | -0,1 |
| 500 | Ores and metals | 1 811 | 1 602 | 9,3 | 8,6 | -5,5 | -0,5 | -11,6 | -1,1 |
| 72 | Iron and steel | 714 | 682 | 3,6 | 3,7 | 2,4 | 0,1 | -4,5 | -0,2 |
| 73 | Articles of iron or steel | 310 | 263 | 1,6 | 1,4 | -8,6 | -0,1 | -15,2 | -0,2 |
| 74 | Copper and articles thereof | 251 | 192 | 1,3 | 1,0 | -10,8 | -0,1 | -23,8 | -0,3 |
| 76 | Aluminium and articles thereof | 243 | 188 | 1,2 | 1,0 | -20,7 | -0,3 | -22,4 | -0,3 |
| 83 | Miscellaneous articles of base metal | 80 | 76 | 0,4 | 0,4 | -5,2 | 0,0 | -5,4 | 0,0 |
| 71 | Natural/cultured pearls, precious stones, precious metals and articles thereof; imitation jewellery; coin | 64 | 59 | 0,3 | 0,3 | -2,2 | 0,0 | -8,0 | 0,0 |
| 600 | Machinery [4] | 2 935 | 2 661 | 15,0 | 14,3 | -10,3 | -1,6 | -9,3 | -1,4 |
| 84 | Nuclear reactors, boilers, machinery and mechanical appliances; parts thereof | 1 490 | 1 352 | 7,6 | 7,3 | -11,5 | -0,9 | -9,2 | -0,7 |
| 85 | Electrical machinery and equipment; sound recorders/reproducers; parts and accessories thereof | 1 445 | 1 309 | 7,4 | 7,1 | -9,1 | -0,7 | -9,4 | -0,7 |
| 700 | Transport equipment [5] | 2 388 | 1 634 | 12,2 | 8,8 | -33,2 | -4,5 | -31,5 | -3,8 |
| 87 | Vehicles other than railway or tramway rolling stock, and parts and accessories thereof | 2 282 | 1 592 | 11,7 | 8,6 | -24,7 | -2,9 | -30,3 | -3,5 |
| 800 | Other manufactured goods | 1 004 | 923 | 5,1 | 5,0 | -9,2 | -0,5 | -8,0 | -0,4 |
| 90 | Optical/photographic/cinematographic/measuring/checking/precision/medical/surgical instruments and apparatus | 347 | 316 | 1,8 | 1,7 | -9,8 | -0,2 | -8,8 | -0,2 |
| 94 | Furniture; lamps & lighting fittings, nes.; illuminated signs/nameplates and the like; prefab. buildings | 261 | 243 | 1,3 | 1,3 | -5,7 | 0,0 | -7,0 | -0,1 |
| 70 | Glass and glassware | 105 | 95 | 0,5 | 0,5 | -6,0 | 0,0 | -9,9 | -0,1 |
| 96 | Miscellaneous manufactured articles | 31 | 72 | 0,2 | 0,4 | 32,7 | 0,1 | 133,7 | 0,2 |
| 95 | Toys, games and sports requisites; parts and accessories thereof | 86 | 67 | 0,4 | 0,4 | -15,6 | -0,1 | -21,8 | -0,1 |

Memo:

| | | | | | | | | |
|-------------------------------|--------|--------|------|------|------|------|-------|------|
| Total without Energy Products | 16 379 | 14 554 | 83,7 | 78,4 | -8,5 | -7,2 | -11,1 | -9,3 |
|-------------------------------|--------|--------|------|------|------|------|-------|------|

Source: GEE, based on data on International Trade statistics from Statistics Portugal (most up-to-date versions available). Estimates for operators under the assimilation threshold and non-responses are included in Intra-EU trade.

Notes:

Sum of Imports from EU and Imports from third countries.

Composition by Group of Products - 000 (Chap. 01 to 24 of CN) - 100 (Chap. 27) - 200 (Chap. 28 to 40) - 300 (Chap. 41 to 49) - 400 (Chap. 50 to 67) - 500 (Chap. 25, 26, 71 to 83) - 600 (Chap. 84 and 85) - 700 (Chap. 86 to 89) - 800 (Chap. 68 to 70 and 90 to 99).

[1] 12 months ending in april 2012

[2] (may 11-apr 12)/(may 10-apr 11) x 100 - 100

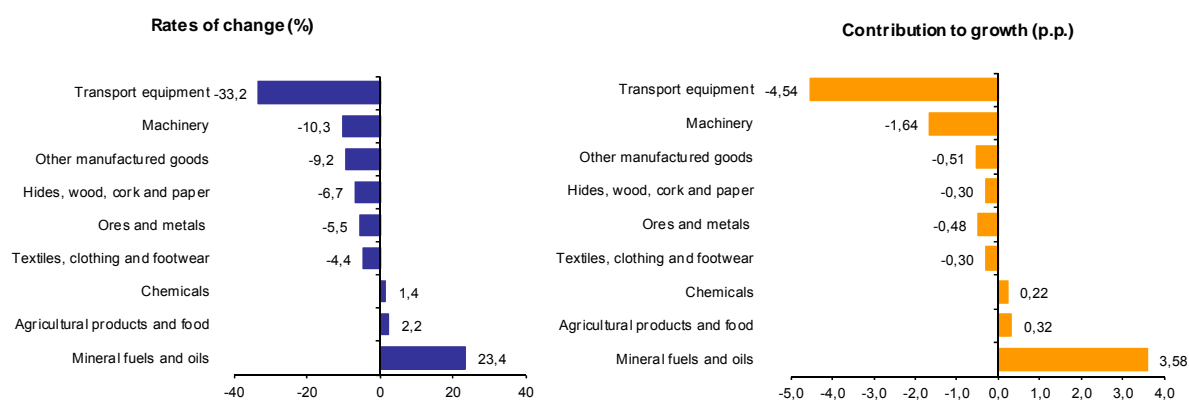
[3] Contribution to the growth rate of exports, shift share analysis: (rate of change) x (weight in the previous period) + 100.

[4] Does not includes tractors.

[5] Includes tractors.

Chart 4 - Growth rates of Portuguese Imports (Intra + Extra-EU) of goods by Group of Products and contribution to growth

Previous 12 months ending in april 2012



Source: Table 12 - Portuguese Imports of goods by Groups of Products.

Table 13 - Imports of goods originating from selected markets

Preliminary data version of january to april 2012

| Country of Origin | Intra + Extra-EU (Cif) | | values in Millions of Euros | | | | | |
|----------------------|------------------------|---------------|-----------------------------|--------------|--|------------------------------|-------------|------------------------------|
| | jan-apr | | Structure (%) | | Growth rates and contributions to growth | | | |
| | 2011 | 2012 | jan-apr | | Last 12 months ^[1] | | jan-apr | |
| | | | 2011 | 2012 | y.o.y., % ^[2] | Contrib. p.p. ^[3] | y.o.y., % | Contrib. p.p. ^[3] |
| TOTAL | 19 575 | 18 563 | 100,0 | 100,0 | -3,7 | -3,7 | -5,2 | -5,2 |
| INTRA EU (27) | 14 583 | 13 306 | 74,5 | 71,7 | -7,8 | -5,9 | -8,8 | -6,5 |
| of which: | | | | | | | | |
| EU-15 | 14 081 | 12 848 | 71,9 | 69,2 | -7,9 | -5,8 | -8,7 | -6,3 |
| Spain | 6 189 | 5 923 | 31,6 | 31,9 | -2,7 | -0,8 | -4,3 | -1,4 |
| Germany | 2 546 | 2 185 | 13,0 | 11,8 | -18,8 | -2,7 | -14,2 | -1,8 |
| France | 1 406 | 1 233 | 7,2 | 6,6 | -8,4 | -0,6 | -12,2 | -0,9 |
| Italy | 1 054 | 948 | 5,4 | 5,1 | -5,6 | -0,3 | -10,1 | -0,5 |
| Netherlands | 987 | 859 | 5,0 | 4,6 | -10,0 | -0,5 | -13,0 | -0,7 |
| United Kingdom | 632 | 586 | 3,2 | 3,2 | -9,8 | -0,3 | -7,3 | -0,2 |
| Belgium | 560 | 471 | 2,9 | 2,5 | -14,6 | -0,4 | -16,0 | -0,5 |
| Sweden | 215 | 203 | 1,1 | 1,1 | -0,8 | 0,0 | -5,6 | -0,1 |
| Ireland | 177 | 161 | 0,9 | 0,9 | 1,7 | 0,0 | -9,4 | -0,1 |
| Enlargement | 503 | 458 | 2,6 | 2,5 | -4,4 | -0,1 | -9,0 | -0,2 |
| EXTRA EU (27) | 4 992 | 5 256 | 25,5 | 28,3 | 9,0 | 2,2 | 5,3 | 1,4 |
| of which: | | | | | | | | |
| Nigeria | 651 | 311 | 3,3 | 1,7 | -30,7 | -0,9 | -52,3 | -1,7 |
| China | 475 | 441 | 2,4 | 2,4 | -8,3 | -0,2 | -7,2 | -0,2 |
| Brazil | 427 | 449 | 2,2 | 2,4 | 35,4 | 0,7 | 5,1 | 0,1 |
| Angola | 208 | 576 | 1,1 | 3,1 | 177,3 | 1,7 | 176,7 | 1,9 |
| United States | 394 | 300 | 2,0 | 1,6 | 5,8 | 0,1 | -23,8 | -0,5 |
| Saudi Arabia | 228 | 328 | 1,2 | 1,8 | 67,4 | 0,7 | 43,6 | 0,5 |
| Kazakhstan | 164 | 292 | 0,8 | 1,6 | 68,7 | 0,7 | 78,1 | 0,7 |
| Algeria | 339 | 203 | 1,7 | 1,1 | 33,7 | 0,3 | -40,0 | -0,7 |
| Russian Federation | 247 | 206 | 1,3 | 1,1 | -8,6 | -0,1 | -16,5 | -0,2 |
| India | 191 | 110 | 1,0 | 0,6 | -18,4 | -0,1 | -42,3 | -0,4 |
| Norway | 155 | 66 | 0,8 | 0,4 | -24,7 | -0,2 | -57,8 | -0,5 |
| Switzerland | 115 | 119 | 0,6 | 0,6 | -0,4 | 0,0 | 2,9 | 0,0 |
| Japan | 125 | 121 | 0,6 | 0,7 | -11,5 | -0,1 | -3,5 | 0,0 |
| Memo: | | | | | | | | |
| OPEC ^[4] | 1 502 | 1 644 | 7,7 | 8,9 | 13,2 | 0,9 | 9,5 | 0,7 |
| EFTA | 278 | 194 | 1,4 | 1,0 | -12,7 | -0,2 | -30,4 | -0,4 |
| ACPOL ^[5] | 215 | 584 | 1,1 | 3,1 | 167,9 | 1,7 | 171,4 | 1,9 |

Source: GEE, based on data on International Trade statistics from Statistics Portugal (most up-to-date versions available). Estimates for operators under the assimilation threshold and non-responses are included in Intra-EU trade.

Notes:

Countries ranked in descending order of value in 2011.

[1] 12 months ending in april 2012

[2] (may 11-apr 12)/(may 10-apr 11) x 100 - 100

[3] Contributions to growth, shift share analysis: (rate of change) x (weight in the previous period) ÷ 100.

[4] Includes Angola.

[5] African Countries of Portuguese Official Language

Table 14 - Portuguese Imports by Group of Products (Extra-EU)

| Group of Products | january to april | | y.o.y., (%) | | Structure (%) | | |
|--|------------------|--------------|-----------------------|------------|-----------------------|--------------|--------------|
| | 2011 | 2012 | Last 12 | jan-apr | Last 12 | jan-apr | |
| | | | months ^[1] | 12/11 | months ^[1] | 2011 | 2012 |
| Total Imports | 4 992 | 5 256 | 9,0 | 5,3 | 100,0 | 100,0 | 100,0 |
| 000 Agricultural products and food | 739 | 626 | 6,1 | -15,3 | 12,8 | 14,8 | 11,9 |
| 100 Mineral fuels and oils | 2 328 | 2 990 | 28,4 | 28,4 | 54,4 | 46,6 | 56,9 |
| 200 Chemicals | 457 | 452 | -1,1 | -1,0 | 8,0 | 9,2 | 8,6 |
| 300 Hides, wood, cork and paper | 153 | 111 | -18,6 | -27,0 | 2,3 | 3,1 | 2,1 |
| 400 Textiles, clothing and footwear | 284 | 233 | -15,4 | -17,9 | 4,8 | 5,7 | 4,4 |
| 500 Ores and metals | 305 | 205 | -19,0 | -32,6 | 4,4 | 6,1 | 3,9 |
| 600 Machinery ^[2] | 441 | 404 | -13,2 | -8,5 | 8,1 | 8,8 | 7,7 |
| 700 Transport equipment ^[3] | 141 | 124 | -9,1 | -12,6 | 2,7 | 2,8 | 2,4 |
| 800 Other manufactured goods | 143 | 111 | -17,1 | -22,6 | 2,5 | 2,9 | 2,1 |
| Memo: | | | | | | | |
| Total without Energy Products | 2 664 | 2 266 | -7,7 | -14,9 | 45,6 | 53,4 | 43,1 |

Source: GEE, based on data on International Trade statistics from Statistics Portugal (most up-to-date versions available).

Notes:

Composition by Group of Products - 000 (Chap. 01 to 24 of CN) - 100 (Chap. 27) - 200 (Chap. 28 to 40) - 300 (Chap. 41 to 49) - 400 (Chap. 50 to 67) - 500 (Chap. 25, 26, 71 to 83) - 600 (Chap. 84 and 85) - 700 (Chap. 86 to 89) - 800 (Chap. 68 to 70 and 90 to 99).

[1] 12 months ending in april 2012

[2] Does not include farm tractors.

[3] Includes farm tractors.

Table 15 - Imports of goods from selected markets

Preliminary data version of january to april 2012

| Country of Origin | jan-apr | | Structure (%) | | | | y.o.y., % | |
|----------------------|--------------|--------------|---------------|--------------|--------------|--------------|-------------------------------|---------------|
| | 2011 | 2012 | Annual | | jan-apr | | Last 12 months ^[1] | jan-apr 12/11 |
| | | | 2006 | 2011 | 2011 | 2012 | | |
| EXTRA EU(27) | 4 992 | 5 256 | 100,0 | 100,0 | 100,0 | 100,0 | 9,0 | 5,3 |
| of which: | | | | | | | | |
| Nigeria | 651 | 311 | 6,0 | 9,8 | 13,0 | 5,9 | -30,7 | -52,3 |
| China | 475 | 441 | 6,0 | 9,6 | 9,5 | 8,4 | -8,3 | -7,2 |
| Brazil | 427 | 449 | 9,5 | 9,4 | 8,5 | 8,5 | 35,4 | 5,1 |
| Angola | 208 | 576 | 0,4 | 7,6 | 4,2 | 11,0 | 177,3 | 176,7 |
| United States | 394 | 300 | 6,0 | 7,0 | 7,9 | 5,7 | 5,8 | -23,8 |
| Saudi Arabia | 228 | 328 | 4,1 | 5,9 | 4,6 | 6,2 | 67,4 | 43,6 |
| Kazakhstan | 164 | 292 | 2,6 | 5,5 | 3,3 | 5,6 | 68,7 | 78,1 |
| Algeria | 339 | 203 | 6,9 | 5,0 | 6,8 | 3,9 | 33,7 | -40,0 |
| Russian Federation | 247 | 206 | 5,0 | 3,6 | 4,9 | 3,9 | -8,6 | -16,5 |
| India | 191 | 110 | 1,8 | 3,0 | 3,8 | 2,1 | -18,4 | -42,3 |
| Norway | 155 | 66 | 5,3 | 2,7 | 3,1 | 1,2 | -24,7 | -57,8 |
| Switzerland | 115 | 119 | 2,8 | 2,3 | 2,3 | 2,3 | -0,4 | 2,9 |
| Japan | 125 | 121 | 4,3 | 2,2 | 2,5 | 2,3 | -11,5 | -3,5 |
| #N/D | | | | | | | | |
| Memo: | | | | | | | | |
| OPEC ^[2] | 1 502 | 1 644 | 27,2 | 29,6 | 30,1 | 31,3 | 13,2 | 9,5 |
| EFTA | 278 | 194 | 8,3 | 5,1 | 5,6 | 3,7 | -12,7 | -30,4 |
| ACPOL ^[3] | 215 | 584 | 0,7 | 7,9 | 4,3 | 11,1 | 167,9 | 171,4 |

Source: GEE, based on data on International Trade statistics from Statistics Portugal (most up-to-date versions available).

Notes:

Countries ranked in descending order of value in 2011.

[1] (may 11-apr 12)/(may 10-apr 11) x 100 - 100

[2] Includes Angola.

[3] African Countries of Portuguese Official Language

By geographical and economic areas

**Table 16 - Portuguese International trade
by geographical and economic areas (Intra + Extra-EU)**

Period of assessment: january to april

values in 1000 Euros

| Geographic/Economic Areas Main Countries | | IMPORTS (Cif) ^[1] | | | | EXPORTS (Fob) ^[2] | | | | Coverage (fob/cif) 2012 | Trade Balance (fob-cif) | |
|---|---------------------------|------------------------------|-------------------|------------------------|----------------------|------------------------------|-------------------|------------------------|----------------------|-------------------------------|-------------------------|-------------------|
| | | 2011 | 2012 | Rate of Change % | Struct. 2012 % | 2011 | 2012 | Rate of Change % | Struct. 2012 % | | 2011 | 2012 |
| Cod | | | | | | | | | | | | |
| WORLD | | 19 574 889 | 18 562 505 | -5,2 | 100,0 | 13 654 407 | 14 979 512 | 9,7 | 100,0 | 80,7 | -5 920 482 | -3 582 993 |
| INTRA EU (27) | | 14 583 178 | 13 306 019 | -8,8 | 71,7 | 10 393 267 | 10 843 660 | 4,3 | 72,4 | 81,5 | -4 189 911 | -2 462 359 |
| 001 | FR France | 1 405 578 | 1 233 450 | -12,2 | 6,6 | 1 750 287 | 1 846 249 | 5,5 | 12,3 | 149,7 | 344 708 | 612 798 |
| 003 | NL Netherlands | 987 048 | 859 194 | -13,0 | 4,6 | 549 800 | 552 417 | 0,5 | 3,7 | 64,3 | -437 249 | -306 777 |
| 004 | DE Germany | 2 545 916 | 2 185 024 | -14,2 | 11,8 | 1 887 729 | 2 033 991 | 7,7 | 13,6 | 93,1 | -658 187 | -151 033 |
| 005 | IT Italy | 1 053 810 | 947 581 | -10,1 | 5,1 | 532 790 | 530 027 | -0,5 | 3,5 | 55,9 | -521 020 | -417 554 |
| 006 | GB United Kingdom | 631 537 | 585 588 | -7,3 | 3,2 | 679 360 | 756 631 | 11,4 | 5,1 | 129,2 | 47 823 | 171 043 |
| 007 | IE Ireland | 177 449 | 160 802 | -9,4 | 0,9 | 39 226 | 46 941 | 19,7 | 0,3 | 29,2 | -138 223 | -113 861 |
| 008 | DK Denmark | 108 971 | 83 627 | -23,3 | 0,5 | 84 766 | 101 626 | 19,9 | 0,7 | 121,5 | -24 205 | 17 999 |
| 009 | GR Greece | 45 217 | 39 651 | -12,3 | 0,2 | 36 999 | 100 371 | 171,3 | 0,7 | 253,1 | -8 218 | 60 720 |
| 011 | ES Spain | 6 189 489 | 5 923 480 | -4,3 | 31,9 | 3 558 425 | 3 397 335 | -4,5 | 22,7 | 57,4 | -2 631 064 | -2 526 145 |
| 017 | BE Belgium | 560 141 | 470 524 | -16,0 | 2,5 | 409 976 | 488 090 | 19,1 | 3,3 | 103,7 | -150 164 | 17 567 |
| 018 | LU Luxembourg | 23 380 | 19 951 | -14,7 | 0,1 | 19 264 | 21 360 | 10,9 | 0,1 | 107,1 | -4 116 | 1 409 |
| 030 | SE Sweden | 214 870 | 202 782 | -5,6 | 1,1 | 151 707 | 168 154 | 10,8 | 1,1 | 82,9 | -63 163 | -34 628 |
| 032 | FI Finland | 48 596 | 47 895 | -1,4 | 0,3 | 81 676 | 72 555 | -11,2 | 0,5 | 151,5 | 33 080 | 24 659 |
| 038 | AT Austria | 88 477 | 88 890 | 0,5 | 0,5 | 69 620 | 80 419 | 15,5 | 0,5 | 90,5 | -18 857 | -8 471 |
| 046 | MT Malta | 7 868 | 5 303 | -32,6 | 0,0 | 5 311 | 3 931 | -26,0 | 0,0 | 74,1 | -2 557 | -1 372 |
| 053 | EE Estonia | 3 057 | 5 596 | 83,0 | 0,0 | 4 162 | 8 715 | 109,4 | 0,1 | 155,7 | 1 105 | 3 120 |
| 054 | LV Latvia | 641 | 2 093 | 226,5 | 0,0 | 1 673 | 4 902 | 193,0 | 0,0 | 234,2 | 1 032 | 2 808 |
| 055 | LT Lithuania | 32 134 | 17 809 | -44,6 | 0,1 | 8 625 | 7 378 | -14,5 | 0,0 | 41,4 | -23 509 | -10 431 |
| 060 | PL Poland | 132 684 | 133 855 | 0,9 | 0,7 | 117 912 | 133 234 | 13,0 | 0,9 | 99,5 | -14 772 | -6 211 |
| 061 | CZ Czech Republic | 125 314 | 115 345 | -8,0 | 0,6 | 88 781 | 108 604 | 22,3 | 0,7 | 94,2 | -36 533 | -6 742 |
| 063 | SK Slovakia | 36 667 | 36 693 | 0,1 | 0,2 | 28 504 | 28 339 | -0,6 | 0,2 | 77,2 | -8 163 | -8 353 |
| 064 | HU Hungary | 80 546 | 72 820 | -9,6 | 0,4 | 42 215 | 53 720 | 27,3 | 0,4 | 73,8 | -38 331 | -19 100 |
| 066 | RO Romania | 40 323 | 28 427 | -29,5 | 0,2 | 71 618 | 83 472 | 16,6 | 0,6 | 293,6 | 31 295 | 55 045 |
| 068 | BG Bulgaria | 29 304 | 25 556 | -12,8 | 0,1 | 18 862 | 18 950 | 0,5 | 0,1 | 74,1 | -10 443 | -6 607 |
| 091 | SI Slovenia | 13 685 | 13 381 | -2,2 | 0,1 | 7 123 | 15 817 | 122,0 | 0,1 | 118,2 | -6 562 | 2 435 |
| 600 | CY Cyprus | 419 | 651 | 55,4 | 0,0 | 13 483 | 6 662 | -50,6 | 0,0 | 1022,9 | 13 064 | 6 011 |
| | OTHERS | 57 | 49 | -13,7 | 0,0 | 133 374 | 173 771 | 30,3 | 1,2 | 352 405,2 | 133 317 | 173 722 |
| EXTRA EU (27) | | 4 991 711 | 5 256 486 | 5,3 | 28,3 | 3 261 140 | 4 135 852 | 26,8 | 27,6 | 78,7 | -1 730 571 | -1 120 634 |
| of which: | | | | | | | | | | | | |
| 1-EUROPE | | 637 506 | 590 906 | -7,3 | 3,2 | 364 866 | 472 396 | 29,5 | 3,2 | 79,9 | -272 639 | -118 510 |
| EFTA | | 278 124 | 193 501 | -30,4 | 1,0 | 152 864 | 175 042 | 14,5 | 1,2 | 90,5 | -125 260 | -18 459 |
| 024 | IS Iceland | 7 267 | 9 274 | 27,6 | 0,0 | 1 068 | 1 792 | 67,7 | 0,0 | 19,3 | -6 198 | -7 482 |
| 028 | NO Norway | 155 362 | 65 536 | -57,8 | 0,4 | 30 140 | 38 537 | 27,9 | 0,3 | 58,8 | -125 221 | -26 999 |
| 039 | CH Switzerland | 115 170 | 118 550 | 2,9 | 0,6 | 121 560 | 134 519 | 10,7 | 0,9 | 113,5 | 6 390 | 15 969 |
| OTHERS | | 359 381 | 397 405 | 10,6 | 2,1 | 212 003 | 297 354 | 40,3 | 2,0 | 74,8 | -147 379 | -100 051 |
| 052 | TR Turkey | 37 945 | 38 931 | 2,6 | 0,2 | 102 473 | 118 069 | 15,2 | 0,8 | 303,3 | 64 528 | 79 138 |
| 075 | RU Russian Federation | 246 891 | 206 165 | -16,5 | 1,1 | 39 080 | 58 175 | 48,9 | 0,4 | 28,2 | -207 811 | -147 990 |
| 092 | HR Croatia | 1 380 | 1 692 | 22,6 | 0,0 | 3 959 | 8 121 | 105,1 | 0,1 | 480,1 | 2 579 | 6 430 |
| 2-AFRICA | | 1 423 568 | 1 672 287 | 17,5 | 9,0 | 1 312 200 | 1 565 736 | 19,3 | 10,5 | 93,6 | -111 368 | -106 551 |
| MAGHREB | | 397 988 | 254 073 | -36,2 | 1,4 | 296 752 | 302 587 | 2,0 | 2,0 | 119,1 | -101 235 | 48 514 |
| 204 | MA Morocco | 49 725 | 46 124 | -7,2 | 0,2 | 112 185 | 156 427 | 39,4 | 1,0 | 339,1 | 62 459 | 110 304 |
| 208 | DZ Algeria | 338 746 | 203 257 | -40,0 | 1,1 | 136 655 | 103 743 | -24,1 | 0,7 | 51,0 | -202 091 | -99 514 |
| 212 | TN Tunisia | 9 517 | 4 692 | -50,7 | 0,0 | 47 912 | 42 416 | -11,5 | 0,3 | 903,9 | 38 396 | 37 724 |
| ACPOL^[3] | | 215 262 | 584 187 | 171,4 | 3,1 | 807 181 | 1 026 045 | 27,1 | 6,8 | 175,6 | 591 920 | 441 858 |
| 247 | CV Cape Verde | 3 344 | 3 283 | -1,8 | 0,0 | 87 005 | 71 962 | -17,3 | 0,5 | 2191,7 | 83 661 | 68 679 |
| 257 | GW Guinea-Bissau | 120 | 11 | -90,7 | 0,0 | 18 342 | 23 634 | 28,9 | 0,2 | 211789,8 | 18 222 | 23 622 |
| 311 | ST Sao Tome and Principe | 67 | 91 | 34,8 | 0,0 | 12 676 | 15 195 | 19,9 | 0,1 | 16766,6 | 12 609 | 15 104 |
| 330 | AO Angola | 208 123 | 575 902 | 176,7 | 3,1 | 634 054 | 819 894 | 29,3 | 5,5 | 142,4 | 425 931 | 243 992 |
| 366 | MZ Mozambique | 3 607 | 4 900 | 35,8 | 0,0 | 55 104 | 95 361 | 73,1 | 0,6 | 1946,0 | 51 497 | 90 460 |
| OTHERS | | 810 319 | 834 027 | 2,9 | 4,5 | 208 266 | 237 105 | 13,8 | 1,6 | 28,4 | -602 053 | -596 922 |
| 216 | LY Libyan Arab Jamahiriya | 13 523 | 120 773 | 793,1 | 0,7 | 7 221 | 7 166 | -0,8 | 0,0 | 5,9 | -6 302 | -113 607 |
| 220 | EG Egypt | 35 086 | 24 214 | -31,0 | 0,1 | 19 132 | 20 012 | 4,6 | 0,1 | 82,6 | -15 954 | -4 201 |
| 272 | CI Côte d'Ivoire | 4 053 | 6 066 | 49,7 | 0,0 | 1 917 | 8 568 | 347,0 | 0,1 | 141,3 | -2 136 | 2 502 |
| 288 | NG Nigeria | 650 561 | 310 640 | -52,3 | 1,7 | 43 992 | 65 386 | 48,6 | 0,4 | 21,0 | -606 568 | -245 254 |
| 388 | ZA South Africa | 22 709 | 18 081 | -20,4 | 0,1 | 25 912 | 26 706 | 3,1 | 0,2 | 147,7 | 3 203 | 8 625 |

(continues)

Period of assessment: january to april

| Geographic/Economic Areas | | IMPORTS (Cif) ^[1] | | | | EXPORTS (Fob) ^[2] | | | | Coverage (fob/cif) 2012 | Trade Balance (fob-cif) | |
|---------------------------|---|------------------------------|------------------|------------------|----------------|------------------------------|------------------|------------------|----------------|-------------------------|-------------------------|-------------------|
| | | 2011 | 2012 | Rate of Change % | Struct. 2012 % | 2011 | 2012 | Rate of Change % | Struct. 2012 % | | 2011 | 2012 |
| Cod | Main Countries | | | | | | | | | | | |
| 3-AMERICA | | 1 236 567 | 1 124 898 | -9,0 | 6,1 | 946 753 | 1 194 533 | 26,2 | 8,0 | 106,2 | -289 814 | 69 635 |
| NAFTA | | 569 301 | 366 326 | -35,7 | 2,0 | 650 685 | 795 010 | 22,2 | 5,3 | 217,0 | 81 383 | 428 684 |
| 400 | US United States | 393 582 | 299 756 | -23,8 | 1,6 | 458 268 | 659 665 | 43,9 | 4,4 | 220,1 | 64 686 | 359 909 |
| 404 | CA Canada | 85 783 | 42 168 | -50,8 | 0,2 | 66 608 | 67 952 | 2,0 | 0,5 | 161,1 | -19 174 | 25 784 |
| 412 | MX Mexico | 89 937 | 24 402 | -72,9 | 0,1 | 125 808 | 67 393 | -46,4 | 0,4 | 276,2 | 35 872 | 42 991 |
| MERCOSUL | | 503 465 | 511 020 | 1,5 | 2,8 | 198 492 | 221 771 | 11,7 | 1,5 | 43,4 | -304 973 | -289 249 |
| 508 | BR Brazil | 426 693 | 448 569 | 5,1 | 2,4 | 179 767 | 194 349 | 8,1 | 1,3 | 43,3 | -246 926 | -254 221 |
| 528 | AR Argentina | 42 877 | 36 522 | -14,8 | 0,2 | 15 171 | 16 038 | 5,7 | 0,1 | 43,9 | -27 705 | -20 484 |
| OTHERS | | 163 801 | 247 552 | 51,1 | 1,3 | 97 577 | 177 752 | 82,2 | 1,2 | 71,8 | -66 224 | -69 800 |
| 424 | HN Honduras | 2 425 | 3 140 | 29,5 | 0,0 | 744 | 351 | -52,9 | 0,0 | 11,2 | -1 681 | -2 789 |
| 436 | CR Costa Rica | 20 746 | 13 682 | -34,1 | 0,1 | 2 088 | 1 304 | -37,5 | 0,0 | 9,5 | -18 659 | -12 378 |
| 448 | CU Cuba | 1 404 | 13 126 | 834,8 | 0,1 | 10 965 | 10 384 | -5,3 | 0,1 | 79,1 | 9 561 | -2 741 |
| 480 | CO Colombia | 65 965 | 99 131 | 50,3 | 0,5 | 3 403 | 11 311 | 232,4 | 0,1 | 11,4 | -62 562 | -87 820 |
| 484 | VE Venezuela | 1 275 | 64 011 | 4922,2 | 0,3 | 32 112 | 99 753 | 210,6 | 0,7 | 155,8 | 30 837 | 35 742 |
| 500 | EC Ecuador | 8 050 | 5 011 | -37,8 | 0,0 | 3 871 | 2 406 | -37,9 | 0,0 | 48,0 | -4 179 | -2 605 |
| 512 | CL Chile | 24 860 | 5 869 | -76,4 | 0,0 | 26 296 | 31 693 | 20,5 | 0,2 | 540,0 | 1 437 | 25 824 |
| 4-ASIA | | 1 669 084 | 1 856 855 | 11,2 | 10,0 | 446 612 | 665 743 | 49,1 | 4,4 | 35,9 | -1 222 472 | -1 191 112 |
| MIDDLE EAST | | 378 837 | 603 542 | 59,3 | 3,3 | 134 054 | 144 527 | 7,8 | 1,0 | 23,9 | -244 783 | -459 014 |
| 612 | IQ Iraq | 0 | 0 | 0,0 | 0,0 | 321 | 1 481 | 361,6 | 0,0 | 0,0 | 321 | 1 481 |
| 616 | IR Iran, Islamic Republic of | 1 440 | 887 | -38,4 | 0,0 | 12 285 | 3 426 | -72,1 | 0,0 | 386,4 | 10 846 | 2 539 |
| 624 | IL Israel | 35 079 | 32 596 | -7,1 | 0,2 | 26 845 | 39 940 | 48,8 | 0,3 | 122,5 | -8 234 | 7 343 |
| 632 | SA Saudi Arabia | 228 328 | 327 909 | 43,6 | 1,8 | 32 609 | 33 530 | 2,8 | 0,2 | 10,2 | -195 719 | -294 380 |
| 647 | AE United Arab Emirates | 34 893 | 5 994 | -82,8 | 0,0 | 26 925 | 23 036 | -14,4 | 0,2 | 384,3 | -7 968 | 17 042 |
| ASEAN | | 167 377 | 146 553 | -12,4 | 0,8 | 35 039 | 38 901 | 11,0 | 0,3 | 26,5 | -132 338 | -107 652 |
| 680 | TH Thailand | 40 839 | 44 658 | 9,4 | 0,2 | 4 744 | 6 624 | 39,6 | 0,0 | 14,8 | -36 095 | -38 034 |
| 700 | ID Indonesia | 43 081 | 18 541 | -57,0 | 0,1 | 1 539 | 6 704 | 335,5 | 0,0 | 36,2 | -41 541 | -11 837 |
| 701 | MY Malaysia | 38 814 | 30 505 | -21,4 | 0,2 | 3 961 | 5 097 | 28,7 | 0,0 | 16,7 | -34 853 | -25 407 |
| 706 | SG Singapore | 10 139 | 8 068 | -20,4 | 0,0 | 19 296 | 16 263 | -15,7 | 0,1 | 201,6 | 9 157 | 8 195 |
| 708 | PH Philippines | 5 833 | 5 275 | -9,6 | 0,0 | 1 635 | 1 433 | -12,4 | 0,0 | 27,2 | -4 197 | -3 842 |
| OTHERS | | 1 122 870 | 1 106 760 | -1,4 | 6,0 | 277 520 | 482 315 | 73,8 | 3,2 | 43,6 | -845 351 | -624 445 |
| 626 | TL Timor-Leste | 347 | 88 | -74,6 | 0,0 | 1 284 | 1 838 | 43,2 | 0,0 | 2082,6 | 937 | 1 750 |
| 662 | PK Pakistan | 34 513 | 22 354 | -35,2 | 0,1 | 5 725 | 4 302 | -24,9 | 0,0 | 19,2 | -28 788 | -18 052 |
| 664 | IN India | 190 837 | 110 027 | -42,3 | 0,6 | 36 102 | 28 208 | -21,9 | 0,2 | 25,6 | -154 735 | -81 819 |
| 720 | CN China | 475 128 | 440 960 | -7,2 | 2,4 | 100 246 | 301 459 | 200,7 | 2,0 | 68,4 | -374 882 | -139 501 |
| 728 | KR Korea, Republic of | 69 759 | 55 277 | -20,8 | 0,3 | 15 605 | 20 600 | 32,0 | 0,1 | 37,3 | -54 153 | -34 677 |
| 732 | JP Japan | 125 019 | 120 691 | -3,5 | 0,7 | 57 076 | 60 293 | 5,6 | 0,4 | 50,0 | -67 943 | -60 398 |
| 736 | TW Taiwan | 35 442 | 38 566 | 8,8 | 0,2 | 23 696 | 6 632 | -72,0 | 0,0 | 17,2 | -11 746 | -31 934 |
| 740 | HK Hong Kong | 9 510 | 8 514 | -10,5 | 0,0 | 29 985 | 46 779 | 56,0 | 0,3 | 549,4 | 20 474 | 38 264 |
| 743 | MO Macao | 49 | 142 | 190,5 | 0,0 | 4 554 | 6 790 | 49,1 | 0,0 | 4770,0 | 4 505 | 6 648 |
| 5-AUSTR,OC,P. REG | | 12 940 | 11 267 | -12,9 | 0,1 | 25 502 | 25 114 | -1,5 | 0,2 | 222,9 | 12 562 | 13 848 |
| 800 | AU Australia | 2 871 | 4 959 | 72,7 | 0,0 | 21 752 | 21 524 | -1,0 | 0,1 | 434,1 | 18 881 | 16 566 |
| 804 | NZ New Zealand | 9 728 | 5 903 | -39,3 | 0,0 | 3 319 | 2 490 | -25,0 | 0,0 | 42,2 | -6 408 | -3 413 |
| 6-OTHERS | | 12 045 | 273 | -97,7 | 0,0 | 165 206 | 212 329 | 28,5 | 1,4 | 77794,5 | 153 161 | 212 056 |
| 952 | QS Stores and provisions (Extra EU) | 0 | 0 | 0,0 | 0,0 | 145 211 | 191 646 | 32,0 | 1,3 | 0,0 | 145 211 | 191 646 |
| 960 | QW Countries/territories not specif. (Extra EU) | 12 045 | 273 | -97,7 | 0,0 | 19 995 | 20 684 | 3,4 | 0,1 | 7578,2 | 7 950 | 20 411 |

Memo:

| | | | | | | | | | | | |
|---------------------------|------------|------------|-------|------|-----------|------------|-------|------|-------|------------|------------|
| Intra EU-15 | 14 080 536 | 12 848 489 | -8,7 | 69,2 | 9 984 998 | 10 369 936 | 3,9 | 69,2 | 80,7 | -4 095 538 | -2 478 553 |
| Intra-enlargement | 502 642 | 457 530 | -9,0 | 2,5 | 408 269 | 473 724 | 16,0 | 3,2 | 103,5 | -94 373 | 16 194 |
| OECD (excl. EU) | 1 152 358 | 823 911 | -28,5 | 4,4 | 1 056 821 | 1 264 466 | 19,6 | 8,4 | 153,5 | -95 537 | 440 555 |
| OPEC | 1 502 070 | 1 644 137 | 9,5 | 8,9 | 936 015 | 1 174 389 | 25,5 | 7,8 | 71,4 | -566 055 | -469 747 |
| ACP ^[4] | 1 001 342 | 1 309 819 | 30,8 | 7,1 | 998 218 | 1 244 362 | 24,7 | 8,3 | 95,0 | -3 124 | -65 457 |
| CPLP ^[5] | 642 302 | 1 032 845 | 60,8 | 5,6 | 988 233 | 1 222 232 | 23,7 | 8,2 | 118,3 | 345 930 | 189 387 |
| CIS ^[6] | 525 813 | 820 403 | 56,0 | 4,4 | 51 470 | 71 873 | 39,6 | 0,5 | 8,8 | -474 343 | -748 530 |
| Mashrak | 38 646 | 29 681 | -23,2 | 0,2 | 42 895 | 41 133 | -4,1 | 0,3 | 138,6 | 4 248 | 11 453 |
| EUROMED | 509 658 | 355 281 | -30,3 | 1,9 | 468 965 | 501 729 | 7,0 | 3,3 | 141,2 | -40 693 | 146 448 |
| Latin American Count. | 734 551 | 757 900 | 3,2 | 4,1 | 419 440 | 463 418 | 10,5 | 3,1 | 61,1 | -315 111 | -294 481 |
| Cent. Amer. Common Market | 25 220 | 25 455 | 0,9 | 0,1 | 10 082 | 7 275 | -27,8 | 0,0 | 28,6 | -15 139 | -18 180 |
| Andean Community | 89 271 | 177 773 | 99,1 | 1,0 | 44 424 | 122 558 | 175,9 | 0,8 | 68,9 | -44 848 | -55 215 |
| ASEM (relac. Euro-Asia) | 1 062 632 | 895 861 | -15,7 | 4,8 | 249 799 | 453 785 | 81,7 | 3,0 | 50,7 | -812 833 | -442 075 |
| EDA (Econ Dinam Asian) | 204 503 | 185 587 | -9,2 | 1,0 | 97 287 | 101 994 | 4,8 | 0,7 | 55,0 | -107 215 | -83 594 |
| China+H. Kong+Macao | 484 687 | 449 616 | -7,2 | 2,4 | 134 784 | 355 028 | 163,4 | 2,4 | 79,0 | -349 903 | -94 588 |

Source: GEE, based on data on International Trade statistics from Statistics Portugal (most up-to-date versions available). Estimates for operators under the assimilation threshold and non-responses are included in Intra-EU trade.

Notes:

[1]Sum of Imports from EU and Imports from third countries.

[2]Sum of Exports to EU and Exports to third countries.

[3]African Countries of Portuguese Official Language

[4]African, Caribbean and Pacific Group of States

[5]Community of Portuguese Language Countries

[6]Commonwealth of Independent States

**Table 17 - International Trade of Portuguese goods
by geographical and economic areas (Intra + Extra-EU)
Imports [1] - Contributions of the main partners to the global growth rate**

Period of assessment: january to april

| Countries and regions | 1000 Euros | | | | Structure (%) | | Growth rates and contributions to growth | | | |
|--|-------------------|-------------------|-------------------|-------------------|---------------|-------------------------------|--|------------------------------|---------------|------------------------------|
| | 2011 | jan-apr | | jan-apr | | Last 12 months ^[2] | | jan-apr | | |
| | | Rank. | 2011 | 2012 | 2011 | 2012 | y.o.y., % ^[3] | Contrib. p.p. ^[4] | y.o.y., % | Contrib. p.p. ^[4] |
| | WORLD | 57 729 732 | 19 574 889 | 18 562 505 | 100,00 | 100,00 | -3,66 | -3,66 | -5,17 | -5,17 |
| INTRA EU(27) | 42 149 115 | 14 583 178 | 13 306 019 | 74,50 | 71,68 | -7,80 | -5,87 | -8,76 | -6,52 | |
| 011 ES Spain | 18 254 083 | 1 | 6 189 489 | 5 923 480 | 31,62 | 31,91 | -2,70 | -0,85 | -4,30 | -1,36 |
| 004 DE Germany | 7 118 044 | 2 | 2 545 916 | 2 185 024 | 13,01 | 11,77 | -18,81 | -2,66 | -14,18 | -1,84 |
| 001 FR France | 3 980 059 | 3 | 1 405 578 | 1 233 450 | 7,18 | 6,64 | -8,42 | -0,59 | -12,25 | -0,88 |
| 005 IT Italy | 3 093 512 | 4 | 1 053 810 | 947 581 | 5,38 | 5,10 | -5,63 | -0,30 | -10,08 | -0,54 |
| 003 NL Netherlands | 2 753 037 | 5 | 987 048 | 859 194 | 5,04 | 4,63 | -10,02 | -0,50 | -12,95 | -0,65 |
| 006 GB United Kingdom | 1 923 966 | 6 | 631 537 | 585 588 | 3,23 | 3,15 | -9,82 | -0,35 | -7,28 | -0,23 |
| 017 BE Belgium | 1 511 849 | 8 | 560 141 | 470 524 | 2,86 | 2,53 | -14,56 | -0,41 | -16,00 | -0,46 |
| 030 SE Sweden | 603 536 | 16 | 214 870 | 202 782 | 1,10 | 1,09 | -0,79 | -0,01 | -5,63 | -0,06 |
| 007 IE Ireland | 598 583 | 17 | 177 449 | 160 802 | 0,91 | 0,87 | 1,67 | 0,02 | -9,38 | -0,09 |
| 060 PL Poland | 388 660 | 21 | 132 684 | 133 855 | 0,68 | 0,72 | 6,39 | 0,04 | 0,88 | 0,01 |
| 061 CZ Czech Republic | 347 121 | 23 | 125 314 | 115 345 | 0,64 | 0,62 | -11,03 | -0,07 | -7,96 | -0,05 |
| 008 DK Denmark | 300 350 | 25 | 108 971 | 83 627 | 0,56 | 0,45 | -14,34 | -0,08 | -23,26 | -0,13 |
| 038 AT Austria | 285 560 | 27 | 88 477 | 88 890 | 0,45 | 0,48 | 0,35 | 0,00 | 0,47 | 0,00 |
| 064 HU Hungary | 228 525 | 31 | 80 546 | 72 820 | 0,41 | 0,39 | -14,06 | -0,06 | -9,59 | -0,04 |
| 032 FI Finland | 134 228 | 37 | 48 596 | 47 895 | 0,25 | 0,26 | -13,54 | -0,04 | -1,44 | 0,00 |
| 009 GR Greece | 123 949 | 38 | 45 217 | 39 651 | 0,23 | 0,21 | -2,84 | -0,01 | -12,31 | -0,03 |
| 066 RO Romania | 119 466 | 39 | 40 323 | 28 427 | 0,21 | 0,15 | -19,22 | -0,04 | -29,50 | -0,06 |
| 063 SK Slovakia | 114 104 | 40 | 36 667 | 36 693 | 0,19 | 0,20 | -0,91 | 0,00 | 0,07 | 0,00 |
| 068 BG Bulgaria | 78 679 | 54 | 29 304 | 25 556 | 0,15 | 0,14 | 56,31 | 0,05 | -12,79 | -0,02 |
| 018 LU Luxembourg | 60 909 | 57 | 23 380 | 19 951 | 0,12 | 0,11 | 5,49 | 0,01 | -14,66 | -0,02 |
| 055 LT Lithuania | 56 141 | 58 | 32 134 | 17 809 | 0,16 | 0,10 | -15,27 | -0,01 | -44,58 | -0,07 |
| 091 SI Slovenia | 38 177 | 63 | 13 685 | 13 381 | 0,07 | 0,07 | -3,74 | 0,00 | -2,22 | 0,00 |
| 046 MT Malta | 19 277 | 75 | 7 868 | 5 303 | 0,04 | 0,03 | -29,69 | -0,01 | -32,59 | -0,01 |
| 053 EE Estonia | 10 107 | 90 | 3 057 | 5 596 | 0,02 | 0,03 | 30,03 | 0,00 | 83,04 | 0,01 |
| 600 CY Cyprus | 4 258 | 110 | 419 | 651 | 0,00 | 0,00 | 255,15 | 0,01 | 55,40 | 0,00 |
| 054 LV Latvia | 2 778 | 120 | 641 | 2 093 | 0,00 | 0,01 | 23,97 | 0,00 | 226,49 | 0,01 |
| OTHERS | 155 | | 57 | 49 | 0,00 | 0,00 | 10,4 | 0,00 | -13,7 | 0,00 |
| EXTRA EU(27) | 15 580 617 | | 4 991 711 | 5 256 486 | 25,50 | 28,32 | 8,98 | 2,22 | 5,30 | 1,35 |
| of which: | | | | | | | | | | |
| 1-EUROPE | 1 691 266 | | 637 506 | 590 906 | 3,26 | 3,18 | -10,15 | -0,32 | -7,31 | -0,24 |
| EFTA | 802 175 | | 278 124 | 193 501 | 1,42 | 1,04 | -12,68 | -0,18 | -30,43 | -0,43 |
| 028 NO Norway | 417 264 | 20 | 155 362 | 65 536 | 0,79 | 0,35 | -24,71 | -0,18 | -57,82 | -0,46 |
| 039 CH Switzerland | 365 170 | 22 | 115 170 | 118 550 | 0,59 | 0,64 | -0,40 | 0,00 | 2,94 | 0,02 |
| 024 IS Iceland | 19 147 | 76 | 7 267 | 9 274 | 0,04 | 0,05 | 30,83 | 0,01 | 27,62 | 0,01 |
| OTHERS | 889 091 | | 359 381 | 397 405 | 1,84 | 2,14 | -8,10 | -0,14 | 10,58 | 0,19 |
| 075 RU Russian Federation | 562 810 | 18 | 246 891 | 206 165 | 1,26 | 1,11 | -8,56 | -0,08 | -16,50 | -0,21 |
| 072 UA Ukraine | 164 273 | 33 | 48 085 | 109 719 | 0,25 | 0,59 | 69,93 | 0,16 | 128,18 | 0,31 |
| 052 TR Turkey | 102 951 | 43 | 37 945 | 38 931 | 0,19 | 0,21 | -59,65 | -0,26 | 2,60 | 0,01 |
| 096 MK Former Yugoslav Republic of Macedonia | 22 135 | 72 | 10 058 | 6 244 | 0,05 | 0,03 | -11,53 | 0,00 | -37,92 | -0,02 |
| 2-AFRICA | 4 361 255 | | 1 423 568 | 1 672 287 | 7,27 | 9,01 | 11,25 | 0,79 | 17,47 | 1,27 |
| MAGHREB | 941 433 | | 397 988 | 254 073 | 2,03 | 1,37 | 10,66 | 0,13 | -36,16 | -0,74 |
| 208 DZ Algeria | 776 204 | 15 | 338 746 | 203 257 | 1,73 | 1,09 | 33,71 | 0,27 | -40,00 | -0,69 |
| 204 MA Morocco | 139 215 | 35 | 49 725 | 46 124 | 0,25 | 0,25 | 4,49 | 0,01 | -7,24 | -0,02 |
| 212 TN Tunisia | 26 014 | 69 | 9 517 | 4 692 | 0,05 | 0,03 | -81,03 | -0,15 | -50,69 | -0,02 |
| ACPOL^[5] | 1 229 970 | | 215 262 | 584 187 | 1,10 | 3,15 | 167,92 | 1,70 | 171,38 | 1,88 |
| 330 AO Angola | 1 177 486 | 11 | 208 123 | 575 902 | 1,06 | 3,10 | 177,27 | 1,68 | 176,71 | 1,88 |
| 366 MZ Mozambique | 41 983 | 62 | 3 607 | 4 900 | 0,02 | 0,03 | 40,56 | 0,02 | 35,85 | 0,01 |
| 247 CV Cape Verde | 9 971 | 92 | 3 344 | 3 283 | 0,02 | 0,02 | 21,40 | 0,00 | -1,82 | 0,00 |
| 311 ST Sao Tome and Principe | 270 | 145 | 67 | 91 | 0,00 | 0,00 | 39,50 | 0,00 | 34,85 | 0,00 |
| 257 GW Guinea-Bissau | 261 | 146 | 120 | 11 | 0,00 | 0,00 | -52,81 | 0,00 | -90,68 | 0,00 |
| OTHERS | 2 189 852 | | 810 319 | 834 027 | 4,14 | 4,49 | -21,68 | -1,04 | 2,93 | 0,12 |
| 288 NG Nigeria | 1 528 659 | 7 | 650 561 | 310 640 | 3,32 | 1,67 | -30,70 | -0,89 | -52,25 | -1,74 |
| 310 GQ Equatorial Guinea | 138 977 | 36 | 58 | 216 586 | 0,00 | 1,17 | 282,42 | 0,45 | 373679,34 | 1,11 |
| 388 ZA South Africa | 97 672 | 44 | 22 709 | 18 081 | 0,12 | 0,10 | -18,92 | -0,04 | -20,38 | -0,02 |
| 220 EG Egypt | 88 088 | 49 | 35 086 | 24 214 | 0,18 | 0,13 | -18,00 | -0,03 | -30,99 | -0,06 |
| 302 CM Cameroon | 86 264 | 52 | 8 473 | 74 135 | 0,04 | 0,40 | 123,79 | 0,14 | 774,96 | 0,34 |
| 3-AMERICA | 3 824 986 | | 1 236 567 | 1 124 898 | 6,32 | 6,06 | 13,46 | 0,75 | -9,03 | -0,57 |
| NAFTA | 1 548 658 | | 569 301 | 366 326 | 2,91 | 1,97 | 0,74 | 0,02 | -35,65 | -1,04 |
| 400 US United States | 1 098 283 | 12 | 393 582 | 299 756 | 2,01 | 1,61 | 5,76 | 0,09 | -23,84 | -0,48 |
| 412 MX Mexico | 230 866 | 30 | 89 937 | 24 402 | 0,46 | 0,13 | -17,47 | -0,06 | -72,87 | -0,33 |
| 404 CA Canada | 219 509 | 32 | 85 783 | 42 168 | 0,44 | 0,23 | -5,25 | -0,02 | -50,84 | -0,22 |

(continues)

Period of assessment: january to april

| Countries and regions | 1000 Euros | | | Structure (%) | | Growth rates and contributions to growth | | | | |
|---|------------------|------------------|------------------|----------------|--------------|--|--------------------------|------------------------------|--------------|------------------------------|
| | 2011 | jan-apr | | jan-apr | | Last 12 months ^[2] | | jan-apr | | |
| | | Rank. | 2011 | 2012 | 2011 | 2012 | y.o.y., % ^[3] | Contrib. p.p. ^[4] | y.o.y., % | Contrib. p.p. ^[4] |
| | MERCOSUL | 1 769 133 | 503 465 | 511 020 | 2,57 | 2,75 | 32,68 | 0,74 | 1,50 | 0,04 |
| 508 BR Brazil | 1 462 081 | 10 | 426 693 | 448 569 | 2,18 | 2,42 | 35,43 | 0,66 | 5,13 | 0,11 |
| 528 AR Argentina | 153 573 | 34 | 42 877 | 36 522 | 0,22 | 0,20 | 30,04 | 0,06 | -14,82 | -0,03 |
| OTHERS | 507 195 | 163 801 | 247 552 | 0,84 | 1,33 | -1,18 | -0,01 | 51,13 | 0,43 | |
| 480 CO Colombia | 246 605 | 29 | 65 965 | 99 131 | 0,34 | 0,53 | 117,59 | 0,26 | 50,28 | 0,17 |
| 436 CR Costa Rica | 54 151 | 59 | 20 746 | 13 682 | 0,11 | 0,07 | -11,48 | -0,01 | -34,05 | -0,04 |
| 512 CL Chile | 51 257 | 60 | 24 860 | 5 869 | 0,13 | 0,03 | -62,73 | -0,09 | -76,39 | -0,10 |
| 488 GY Guyana | 32 402 | 64 | 8 783 | 111 | 0,04 | 0,00 | -41,06 | -0,03 | -98,73 | -0,04 |
| 504 PE Peru | 28 970 | 65 | 13 002 | 9 261 | 0,07 | 0,05 | -19,96 | -0,01 | -28,77 | -0,02 |
| 500 EC Ecuador | 22 108 | 73 | 8 050 | 5 011 | 0,04 | 0,03 | -11,40 | 0,00 | -37,76 | -0,02 |
| 4-ASIA | 5 648 520 | 1 669 084 | 1 856 855 | 8,53 | 10,00 | 11,77 | 1,04 | 11,25 | 0,96 | |
| MIDDLE EAST | 1 499 781 | 378 837 | 603 542 | 1,94 | 3,25 | 44,25 | 0,90 | 59,31 | 1,15 | |
| 632 SA Saudi Arabia | 914 297 | 13 | 228 328 | 327 909 | 1,17 | 1,77 | 67,43 | 0,69 | 43,61 | 0,51 |
| 078 AZ Azerbaijan | 290 057 | 26 | 53 801 | 198 599 | 0,27 | 1,07 | 42,31 | 0,22 | 269,13 | 0,74 |
| 624 IL Israel | 93 796 | 47 | 35 079 | 32 596 | 0,18 | 0,18 | -1,79 | 0,00 | -7,08 | -0,01 |
| 644 QA Qatar | 88 126 | 48 | 16 362 | 28 129 | 0,08 | 0,15 | 230,71 | 0,12 | 71,92 | 0,06 |
| 647 AE United Arab Emirates | 68 694 | 55 | 34 893 | 5 994 | 0,18 | 0,03 | -20,45 | -0,02 | -82,82 | -0,15 |
| 640 BH Bahrain | 15 394 | 81 | 99 | 12 | 0,00 | 0,00 | -32,54 | -0,01 | -87,93 | 0,00 |
| 649 OM Oman | 9 159 | 95 | 3 982 | 786 | 0,02 | 0,00 | -47,90 | -0,01 | -80,25 | -0,02 |
| ASEAN | 454 716 | 167 377 | 146 553 | 0,86 | 0,79 | -1,13 | -0,01 | -12,44 | -0,11 | |
| 680 TH Thailand | 112 481 | 41 | 40 839 | 44 658 | 0,21 | 0,24 | -3,73 | -0,01 | 9,35 | 0,02 |
| 701 MY Malaysia | 112 032 | 42 | 38 814 | 30 505 | 0,20 | 0,16 | -6,10 | -0,01 | -21,41 | -0,04 |
| 690 VN Viet-Nam | 96 943 | 45 | 27 031 | 38 130 | 0,14 | 0,21 | 44,36 | 0,06 | 41,06 | 0,06 |
| 700 ID Indonesia | 87 026 | 50 | 43 081 | 18 541 | 0,22 | 0,10 | -21,83 | -0,03 | -56,96 | -0,13 |
| 706 SG Singapore | 23 389 | 70 | 10 139 | 8 068 | 0,05 | 0,04 | -34,43 | -0,02 | -20,43 | -0,01 |
| OTHERS | 3 694 023 | 1 122 870 | 1 106 760 | 5,74 | 5,96 | 2,52 | 0,15 | -1,43 | -0,08 | |
| 720 CN China | 1 499 188 | 9 | 475 128 | 440 960 | 2,43 | 2,38 | -8,25 | -0,22 | -7,19 | -0,17 |
| 079 KZ Kazakhstan | 853 958 | 14 | 164 191 | 292 436 | 0,84 | 1,58 | 68,74 | 0,68 | 78,11 | 0,66 |
| 664 IN India | 467 326 | 19 | 190 837 | 110 027 | 0,97 | 0,59 | -18,39 | -0,15 | -42,35 | -0,41 |
| 732 JP Japan | 340 635 | 24 | 125 019 | 120 691 | 0,64 | 0,65 | -11,46 | -0,07 | -3,46 | -0,02 |
| 728 KR Korea, Republic of | 278 178 | 28 | 69 759 | 55 277 | 0,36 | 0,30 | 13,34 | 0,05 | -20,76 | -0,07 |
| 736 TW Taiwan | 96 635 | 46 | 35 442 | 38 566 | 0,18 | 0,21 | -30,16 | -0,07 | 8,81 | 0,02 |
| 662 PK Pakistan | 81 451 | 53 | 34 513 | 22 354 | 0,18 | 0,12 | -21,85 | -0,03 | -35,23 | -0,06 |
| 666 BD Bangladesh | 27 638 | 66 | 8 059 | 9 494 | 0,04 | 0,05 | 6,80 | 0,00 | 17,80 | 0,01 |
| 740 HK Hong Kong | 27 493 | 67 | 9 510 | 8 514 | 0,05 | 0,05 | -23,17 | -0,01 | -10,48 | -0,01 |
| 081 UZ Uzbekistan | 9 867 | 93 | 5 556 | 3 291 | 0,03 | 0,02 | -57,54 | -0,02 | -40,77 | -0,01 |
| 5-AUSTR,OC,P. REG | 42 005 | 12 940 | 11 267 | 0,07 | 0,06 | 23,56 | 0,01 | -12,93 | -0,01 | |
| 804 NZ New Zealand | 26 714 | 68 | 9 728 | 5 903 | 0,05 | 0,03 | 0,78 | 0,00 | -39,32 | -0,02 |
| 800 AU Australia | 14 591 | 83 | 2 871 | 4 959 | 0,01 | 0,03 | 80,80 | 0,01 | 72,73 | 0,01 |
| 801 PG Papua New Guinea | 509 | 140 | 277 | 381 | 0,00 | 0,00 | 8,94 | 0,00 | 37,60 | 0,00 |
| 6-OTHERS | 12 586 | 12 045 | 273 | 0,06 | 0,00 | -97,89 | -0,06 | -97,73 | -0,06 | |
| 960 QW Countries/territories not specif. (Extra EU) | 12 586 | | 12 045 | 273 | 0,06 | 0,00 | -97,89 | -0,06 | -97,73 | -0,06 |
| 952 QS Stores and provisions (Extra EU) | 0 | | 0 | 0 | 0,00 | 0,00 | 0,00 | 0,00 | 0,00 | 0,00 |

Memo:

| | | | | | | | | | |
|---------------------------|------------|------------|------------|-------|-------|--------|-------|--------|-------|
| Intra EU-15 | 40 741 819 | 14 080 536 | 12 848 489 | 71,93 | 69,22 | -7,91 | -5,77 | -8,75 | -6,29 |
| Intra-enlargement | 1 407 295 | 502 642 | 457 530 | 2,57 | 2,46 | -4,44 | -0,11 | -8,98 | -0,23 |
| OECD (excl. EU) | 3 258 360 | 1 152 358 | 823 911 | 5,89 | 4,44 | -9,53 | -0,52 | -28,50 | -1,68 |
| OPEC | 4 611 027 | 1 502 070 | 1 644 137 | 7,67 | 8,86 | 13,16 | 0,94 | 9,46 | 0,73 |
| ACP ^[6] | 3 382 557 | 1 001 342 | 1 309 819 | 5,12 | 7,06 | 26,68 | 1,32 | 30,81 | 1,58 |
| CPLP ^[7] | 2 693 077 | 642 302 | 1 032 845 | 3,28 | 5,56 | 82,07 | 2,36 | 60,80 | 2,00 |
| CIS ^[8] | 1 898 015 | 525 813 | 820 403 | 2,69 | 4,42 | 35,26 | 0,97 | 56,03 | 1,50 |
| Mashrak | 98 267 | 38 646 | 29 681 | 0,20 | 0,16 | -14,23 | -0,03 | -23,20 | -0,05 |
| EUROMED | 1 236 447 | 509 658 | 355 281 | 2,60 | 1,91 | -7,94 | -0,16 | -30,29 | -0,79 |
| Latin American Count. | 2 450 297 | 734 551 | 757 900 | 3,75 | 4,08 | 21,38 | 0,74 | 3,18 | 0,12 |
| Cent. Amer. Common Market | 78 206 | 25 220 | 25 455 | 0,13 | 0,14 | 21,22 | 0,02 | 0,93 | 0,00 |
| Andean Community | 313 159 | 89 271 | 177 773 | 0,46 | 0,96 | 22,20 | 0,12 | 99,14 | 0,45 |
| ASEM (relac. Euro-Asia) | 3 121 494 | 1 062 632 | 895 861 | 5,43 | 4,83 | -7,96 | -0,43 | -15,69 | -0,85 |
| EDA (Econ Dinam Asian) | 650 209 | 204 503 | 185 587 | 1,04 | 1,00 | -6,30 | -0,07 | -9,25 | -0,10 |
| China+H. Kong+Macau | 1 526 912 | 484 687 | 449 616 | 2,48 | 2,42 | -8,57 | -0,24 | -7,24 | -0,18 |

Source: GEE, based on data on International Trade statistics from Statistics Portugal (most up-to-date versions available). Estimates for operators under the assimilation threshold and non-responses are included in Intra-EU trade.

Notes:

- [1] Sum of Imports from EU and Imports from third countries.
- [2] 12 months ending in april 2012
- [3] (may 11-apr 12)/(may 10-apr 11) x 100 - 100
- [4] Contributions to growth, shift share analysis: (rate of change) x (weight in the previous period) ÷ 100.
- [5] African Countries of Portuguese Official Language
- [6] African, Caribbean and Pacific Group of States
- [7] Community of Portuguese Language Countries
- [8] Commonwealth of Independent States

**Table 18 - International Trade of Portuguese goods
by geographical and economic areas (Intra + Extra-EU)
Exports ^[1] - Contributions of the main partners to the global growth rate**

Period of assessment: january to april

| Countries and regions | 1000 Euros | | | | Structure (%) | | Growth rates and contributions to growth | | | |
|------------------------------|-------------------|-------------------|-------------------|-------------------|---------------|-------------------------------|--|------------------------------|--------------|------------------------------|
| | 2011 | jan-apr | | jan-apr | | Last 12 months ^[2] | | jan-apr | | |
| | | Rank. | 2011 | 2012 | 2011 | 2012 | y.o.y., % ^[3] | Contrib. p.p. ^[4] | y.o.y., % | Contrib. p.p. ^[4] |
| | WORLD | 42 384 352 | 13 654 407 | 14 979 512 | 100,00 | 100,00 | 12,67 | 12,67 | 9,70 | 9,70 |
| INTRA EU(27) | 31 402 554 | 10 393 267 | 10 843 660 | 76,12 | 72,39 | 9,18 | 6,90 | 4,33 | 3,30 | |
| 011 ES Spain | 10 529 970 | 1 | 3 558 425 | 3 397 335 | 26,06 | 22,68 | 1,88 | 0,49 | -4,53 | -1,18 |
| 004 DE Germany | 5 761 314 | 2 | 1 887 729 | 2 033 991 | 13,83 | 13,58 | 14,25 | 1,90 | 7,75 | 1,07 |
| 001 FR France | 5 101 777 | 3 | 1 750 287 | 1 846 249 | 12,82 | 12,33 | 11,58 | 1,39 | 5,48 | 0,70 |
| 006 GB United Kingdom | 2 155 081 | 5 | 679 360 | 756 631 | 4,98 | 5,05 | 8,86 | 0,47 | 11,37 | 0,57 |
| 003 NL Netherlands | 1 665 532 | 6 | 549 800 | 552 417 | 4,03 | 3,69 | 9,87 | 0,39 | 0,48 | 0,02 |
| 005 IT Italy | 1 550 234 | 7 | 532 790 | 530 027 | 3,90 | 3,54 | 4,74 | 0,18 | -0,52 | -0,02 |
| 017 BE Belgium | 1 334 824 | 9 | 409 976 | 488 090 | 3,00 | 3,26 | 27,32 | 0,78 | 19,05 | 0,57 |
| 030 SE Sweden | 434 920 | 12 | 151 707 | 168 154 | 1,11 | 1,12 | 10,13 | 0,11 | 10,84 | 0,12 |
| 060 PL Poland | 403 921 | 13 | 117 912 | 133 234 | 0,86 | 0,89 | 25,40 | 0,22 | 12,99 | 0,11 |
| 061 CZ Czech Republic | 277 926 | 19 | 88 781 | 108 604 | 0,65 | 0,73 | 16,46 | 0,11 | 22,33 | 0,15 |
| 008 DK Denmark | 266 155 | 20 | 84 766 | 101 626 | 0,62 | 0,68 | 6,81 | 0,05 | 19,89 | 0,12 |
| 032 FI Finland | 244 804 | 23 | 81 676 | 72 555 | 0,60 | 0,48 | -14,60 | -0,10 | -11,17 | -0,07 |
| 066 RO Romania | 233 542 | 24 | 71 618 | 83 472 | 0,52 | 0,56 | 15,84 | 0,09 | 16,55 | 0,09 |
| 038 AT Austria | 230 868 | 25 | 69 620 | 80 419 | 0,51 | 0,54 | 13,90 | 0,08 | 15,51 | 0,08 |
| 009 GR Greece | 131 913 | 32 | 36 999 | 100 371 | 0,27 | 0,67 | 77,42 | 0,22 | 171,28 | 0,46 |
| 007 IE Ireland | 122 947 | 33 | 39 226 | 46 941 | 0,29 | 0,31 | 12,21 | 0,04 | 19,67 | 0,06 |
| 064 HU Hungary | 120 825 | 34 | 42 215 | 53 720 | 0,31 | 0,36 | 15,21 | 0,05 | 27,25 | 0,08 |
| 063 SK Slovakia | 84 677 | 41 | 28 504 | 28 339 | 0,21 | 0,19 | 5,32 | 0,01 | -0,58 | 0,00 |
| 018 LU Luxembourg | 58 226 | 50 | 19 264 | 21 360 | 0,14 | 0,14 | 7,53 | 0,01 | 10,88 | 0,02 |
| 068 BG Bulgaria | 52 674 | 52 | 18 862 | 18 950 | 0,14 | 0,13 | -19,25 | -0,03 | 0,46 | 0,00 |
| 600 CY Cyprus | 34 115 | 59 | 13 483 | 6 662 | 0,10 | 0,04 | -32,82 | -0,03 | -50,59 | -0,05 |
| 091 SI Slovenia | 24 494 | 63 | 7 123 | 15 817 | 0,05 | 0,11 | 40,87 | 0,02 | 122,05 | 0,06 |
| 046 MT Malta | 24 015 | 64 | 5 311 | 3 931 | 0,04 | 0,03 | 37,46 | 0,02 | -25,98 | -0,01 |
| 055 LT Lithuania | 22 268 | 66 | 8 625 | 7 378 | 0,06 | 0,05 | -10,03 | -0,01 | -14,46 | -0,01 |
| 053 EE Estonia | 14 583 | 77 | 4 162 | 8 715 | 0,03 | 0,06 | 22,80 | 0,01 | 109,39 | 0,03 |
| 054 LV Latvia | 11 381 | 87 | 1 673 | 4 902 | 0,01 | 0,03 | 64,53 | 0,01 | 192,98 | 0,02 |
| OTHERS | 509 569 | | 133 374 | 173 771 | 0,98 | 1,16 | 46,14 | 0,45 | 30,29 | 0,30 |
| EXTRA EU(27) | 10 981 799 | | 3 261 140 | 4 135 852 | 23,88 | 27,61 | 23,25 | 5,77 | 26,82 | 6,41 |
| of which: | | | | | | | | | | |
| 1-EUROPE | 1 226 229 | | 364 866 | 472 396 | 2,67 | 3,15 | 23,75 | 0,66 | 29,47 | 0,79 |
| EFTA | 467 032 | | 152 864 | 175 042 | 1,12 | 1,17 | 12,76 | 0,14 | 14,51 | 0,16 |
| 039 CH Switzerland | 372 235 | 16 | 121 560 | 134 519 | 0,89 | 0,90 | 10,96 | 0,10 | 10,66 | 0,09 |
| 028 NO Norway | 90 146 | 38 | 30 140 | 38 537 | 0,22 | 0,26 | 18,41 | 0,04 | 27,86 | 0,06 |
| OTHERS | 759 196 | | 212 003 | 297 354 | 1,55 | 1,99 | 31,16 | 0,52 | 40,26 | 0,63 |
| 052 TR Turkey | 301 019 | 18 | 102 473 | 118 069 | 0,75 | 0,79 | 12,57 | 0,09 | 15,22 | 0,11 |
| 044 GI Gibraltar | 253 795 | 22 | 49 419 | 97 602 | 0,36 | 0,65 | 70,34 | 0,32 | 97,50 | 0,35 |
| 075 RU Russian Federation | 139 853 | 31 | 39 080 | 58 175 | 0,29 | 0,39 | 36,10 | 0,11 | 48,86 | 0,14 |
| 072 UA Ukraine | 19 094 | 67 | 4 995 | 6 672 | 0,04 | 0,04 | -3,05 | 0,00 | 33,57 | 0,01 |
| 092 HR Croatia | 15 373 | 74 | 3 959 | 8 121 | 0,03 | 0,05 | 70,53 | 0,02 | 105,15 | 0,03 |
| 2-AFRICA | 4 363 262 | | 1 312 200 | 1 565 736 | 9,61 | 10,45 | 21,91 | 2,14 | 19,32 | 1,86 |
| MAGHREB | 889 663 | | 296 752 | 302 587 | 2,17 | 2,02 | 17,56 | 0,34 | 1,97 | 0,04 |
| 204 MA Morocco | 387 476 | 15 | 112 185 | 156 427 | 0,82 | 1,04 | 30,86 | 0,26 | 39,44 | 0,32 |
| 208 DZ Algeria | 358 603 | 17 | 136 655 | 103 743 | 1,00 | 0,69 | 15,89 | 0,12 | -24,08 | -0,24 |
| 212 TN Tunisia | 143 584 | 30 | 47 912 | 42 416 | 0,35 | 0,28 | -8,42 | -0,03 | -11,47 | -0,04 |
| ACPOL ^[5] | 2 919 571 | | 807 181 | 1 026 045 | 5,91 | 6,85 | 25,99 | 1,67 | 27,11 | 1,60 |
| 330 AO Angola | 2 335 457 | 4 | 634 054 | 819 894 | 4,64 | 5,47 | 28,10 | 1,43 | 29,31 | 1,36 |
| 247 CV Cape Verde | 255 151 | 21 | 87 005 | 71 962 | 0,64 | 0,48 | -8,64 | -0,06 | -17,29 | -0,11 |
| 366 MZ Mozambique | 217 873 | 26 | 55 104 | 95 361 | 0,40 | 0,64 | 55,13 | 0,24 | 73,05 | 0,29 |
| 257 GW Guinea-Bissau | 64 368 | 48 | 18 342 | 23 634 | 0,13 | 0,16 | 38,23 | 0,05 | 28,85 | 0,04 |
| 311 ST Sao Tome and Principe | 46 723 | 53 | 12 676 | 15 195 | 0,09 | 0,10 | 14,06 | 0,02 | 19,87 | 0,02 |
| OTHERS | 554 027 | | 208 266 | 237 105 | 1,53 | 1,58 | 9,12 | 0,13 | 13,85 | 0,21 |
| 388 ZA South Africa | 86 089 | 40 | 25 912 | 26 706 | 0,19 | 0,18 | 9,22 | 0,02 | 3,06 | 0,01 |
| 288 NG Nigeria | 76 112 | 44 | 43 992 | 65 386 | 0,32 | 0,44 | 55,45 | 0,09 | 48,63 | 0,16 |
| 220 EG Egypt | 71 394 | 47 | 19 132 | 20 012 | 0,14 | 0,13 | -1,96 | 0,00 | 4,60 | 0,01 |
| 310 GQ Equatorial Guinea | 41 111 | 55 | 11 834 | 12 130 | 0,09 | 0,08 | 26,68 | 0,02 | 2,50 | 0,00 |
| 3-AMERICA | 3 172 258 | | 946 753 | 1 194 533 | 6,93 | 7,97 | 19,51 | 1,44 | 26,17 | 1,81 |
| NAFTA | 2 166 219 | | 650 685 | 795 010 | 4,77 | 5,31 | 17,88 | 0,90 | 22,18 | 1,06 |
| 400 US United States | 1 498 627 | 8 | 458 268 | 659 665 | 3,36 | 4,40 | 26,85 | 0,93 | 43,95 | 1,47 |
| 412 MX Mexico | 462 402 | 11 | 125 808 | 67 393 | 0,92 | 0,45 | -8,51 | -0,10 | -46,43 | -0,43 |
| 404 CA Canada | 205 190 | 27 | 66 608 | 67 952 | 0,49 | 0,45 | 15,82 | 0,07 | 2,02 | 0,01 |

(continues)

Period of assessment: january to april

| Countries and regions | 1000 Euros | | | Structure (%) | | Growth rates and contributions to growth | | | | |
|---|------------------|----------------|----------------|---------------|-------------|--|-------------------------------|--------------|------------------------------|-------|
| | 2011 | | jan-apr | | jan-apr | | Last 12 months ^[2] | | jan-apr | |
| | Rank. | 2011 | 2012 | 2011 | 2012 | y.o.y., % ^[3] | Contrib. p.p. ^[4] | y.o.y., % | Contrib. p.p. ^[4] | |
| | | | | | | | | | | |
| MERCOSUL | 651 494 | 198 492 | 221 771 | 1,45 | 1,48 | 23,83 | 0,33 | 11,73 | 0,17 | |
| 508 BR Brazil | 585 268 | 10 | 179 767 | 194 349 | 1,32 | 1,30 | 22,13 | 0,28 | 8,11 | 0,11 |
| 528 AR Argentina | 45 328 | 54 | 15 171 | 16 038 | 0,11 | 0,11 | 6,49 | 0,01 | 5,71 | 0,01 |
| OTHERS | 354 545 | 97 577 | 177 752 | 0,71 | 1,19 | 21,92 | 0,20 | 82,17 | 0,59 | |
| 484 VE Venezuela | 152 827 | 29 | 32 112 | 99 753 | 0,24 | 0,67 | 47,89 | 0,18 | 210,64 | 0,50 |
| 512 CL Chile | 80 221 | 43 | 26 296 | 31 693 | 0,19 | 0,21 | -6,52 | -0,02 | 20,52 | 0,04 |
| 448 CU Cuba | 22 320 | 65 | 10 965 | 10 384 | 0,08 | 0,07 | -5,37 | 0,00 | -5,30 | 0,00 |
| 4-ASIA | 1 509 134 | 446 612 | 665 743 | 3,27 | 4,44 | 38,38 | 1,24 | 49,07 | 1,60 | |
| MIDDLE EAST | 414 253 | 134 054 | 144 527 | 0,98 | 0,96 | 6,49 | 0,07 | 7,81 | 0,08 | |
| 632 SA Saudi Arabia | 93 659 | 36 | 32 609 | 33 530 | 0,24 | 0,22 | 15,48 | 0,03 | 2,82 | 0,01 |
| 647 AE United Arab Emirates | 90 330 | 37 | 26 925 | 23 036 | 0,20 | 0,15 | 14,88 | 0,03 | -14,44 | -0,03 |
| 624 IL Israel | 74 535 | 45 | 26 845 | 39 940 | 0,20 | 0,27 | 16,12 | 0,03 | 48,78 | 0,10 |
| 616 IR Iran, Islamic Republic of | 35 104 | 58 | 12 285 | 3 426 | 0,09 | 0,02 | -30,23 | -0,03 | -72,12 | -0,06 |
| 604 LB Lebanon | 27 784 | 60 | 8 588 | 8 053 | 0,06 | 0,05 | 1,10 | 0,00 | -6,23 | 0,00 |
| ASEAN | 139 012 | 35 039 | 38 901 | 0,26 | 0,26 | 35,77 | 0,10 | 11,02 | 0,03 | |
| 706 SG Singapore | 81 286 | 42 | 19 296 | 16 263 | 0,14 | 0,11 | 41,09 | 0,06 | -15,72 | -0,02 |
| 680 TH Thailand | 16 041 | 70 | 4 744 | 6 624 | 0,03 | 0,04 | 33,41 | 0,01 | 39,62 | 0,01 |
| 701 MY Malaysia | 12 267 | 83 | 3 961 | 5 097 | 0,03 | 0,03 | 25,82 | 0,01 | 28,68 | 0,01 |
| 690 VN Viet-Nam | 12 007 | 85 | 3 698 | 2 508 | 0,03 | 0,02 | -7,40 | 0,00 | -32,19 | -0,01 |
| OTHERS | 955 869 | 277 520 | 482 315 | 2,03 | 3,22 | 55,84 | 1,07 | 73,80 | 1,50 | |
| 720 CN China | 399 012 | 14 | 100 246 | 301 459 | 0,73 | 2,01 | 128,16 | 0,87 | 200,72 | 1,47 |
| 732 JP Japan | 191 733 | 28 | 57 076 | 60 293 | 0,42 | 0,40 | 29,58 | 0,11 | 5,64 | 0,02 |
| 740 HK Hong Kong | 111 736 | 35 | 29 985 | 46 779 | 0,22 | 0,31 | 20,33 | 0,06 | 56,01 | 0,12 |
| 664 IN India | 89 966 | 39 | 36 102 | 28 208 | 0,26 | 0,19 | -2,98 | -0,01 | -21,87 | -0,06 |
| 736 TW Taiwan | 61 869 | 49 | 23 696 | 6 632 | 0,17 | 0,04 | 1,25 | 0,00 | -72,01 | -0,12 |
| 728 KR Korea, Republic of | 53 901 | 51 | 15 605 | 20 600 | 0,11 | 0,14 | 26,76 | 0,03 | 32,00 | 0,04 |
| 662 PK Pakistan | 15 624 | 73 | 5 725 | 4 302 | 0,04 | 0,03 | -3,01 | 0,00 | -24,86 | -0,01 |
| 5-AUSTR,OC,P. REG | 84 042 | 25 502 | 25 114 | 0,19 | 0,17 | 0,32 | 0,00 | -1,52 | 0,00 | |
| 800 AU Australia | 72 160 | 46 | 21 752 | 21 524 | 0,16 | 0,14 | -0,45 | 0,00 | -1,05 | 0,00 |
| 804 NZ New Zealand | 9 015 | 94 | 3 319 | 2 490 | 0,02 | 0,02 | -7,79 | 0,00 | -24,98 | -0,01 |
| 6-DIVERSOS | 626 874 | 165 206 | 212 329 | 1,21 | 1,42 | 20,11 | 0,29 | 28,52 | 0,35 | |
| 952 QS Stores and provisions (Extra EU) | 524 066 | | 145 211 | 191 646 | 1,06 | 1,28 | 20,11 | 0,25 | 31,98 | 0,34 |
| 960 QW Countries/territories not specif. (Extra EU) | 102 808 | | 19 995 | 20 684 | 0,15 | 0,14 | 20,11 | 0,04 | 3,44 | 0,01 |

Memo:

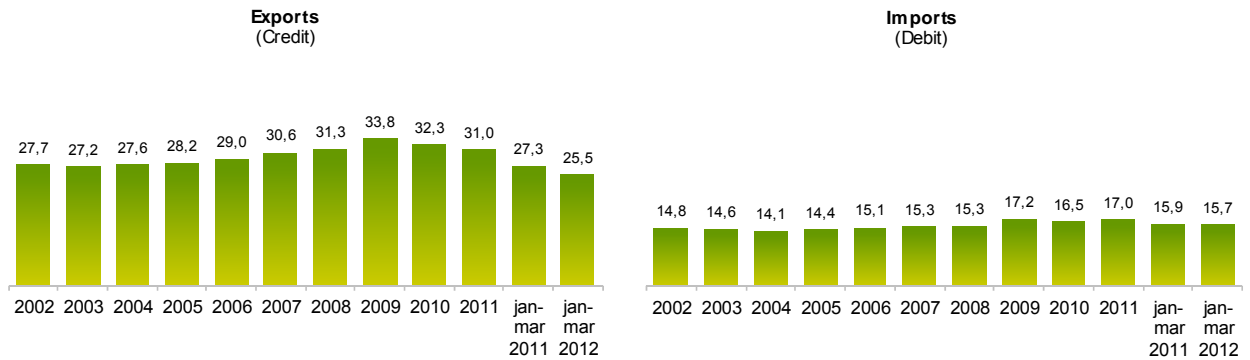
| | | | | | | | | | |
|---------------------------|------------|-----------|------------|-------|-------|--------|-------|--------|-------|
| Intra EU-15 | 30 098 133 | 9 984 998 | 10 369 936 | 73,13 | 69,23 | 8,93 | 6,44 | 3,86 | 2,82 |
| Intra-enlargement | 1 304 421 | 408 269 | 473 724 | 2,99 | 3,16 | 15,04 | 0,46 | 16,03 | 0,48 |
| OECD (excl. EU) | 3 415 162 | 1 056 821 | 1 264 466 | 7,74 | 8,44 | 16,11 | 1,30 | 19,65 | 1,52 |
| OPEC | 3 197 022 | 936 015 | 1 174 389 | 6,86 | 7,84 | 25,39 | 1,79 | 25,47 | 1,75 |
| ACP ^[6] | 3 422 783 | 998 218 | 1 244 362 | 7,31 | 8,31 | 24,24 | 1,85 | 24,66 | 1,80 |
| CPLP ^[7] | 3 509 751 | 988 233 | 1 222 232 | 7,24 | 8,16 | 25,27 | 1,95 | 23,68 | 1,71 |
| CIS ^[8] | 180 362 | 51 470 | 71 873 | 0,38 | 0,48 | 27,13 | 0,11 | 39,64 | 0,15 |
| Mashrak | 141 385 | 42 895 | 41 133 | 0,31 | 0,27 | -6,62 | -0,03 | -4,11 | -0,01 |
| EUROMED | 1 406 602 | 468 965 | 501 729 | 3,43 | 3,35 | 13,52 | 0,44 | 6,99 | 0,24 |
| Latin American Count. | 1 453 902 | 419 440 | 463 418 | 3,07 | 3,09 | 12,36 | 0,42 | 10,49 | 0,32 |
| Cent. Amer. Common Market | 28 798 | 10 082 | 7 275 | 0,07 | 0,05 | -12,88 | -0,01 | -27,84 | -0,02 |
| Andean Community | 199 809 | 44 424 | 122 558 | 0,33 | 0,82 | 45,31 | 0,22 | 175,88 | 0,57 |
| ASEM (relac. Euro-Asia) | 889 273 | 249 799 | 453 785 | 1,83 | 3,03 | 64,53 | 1,11 | 81,66 | 1,49 |
| EDA (Econ Dinam Asian) | 337 100 | 97 287 | 101 994 | 0,71 | 0,68 | 23,36 | 0,17 | 4,84 | 0,03 |
| China+H. Kong+Macau | 525 964 | 134 784 | 355 028 | 0,99 | 2,37 | 94,44 | 0,93 | 163,40 | 1,61 |

Source: GEE, based on data on International Trade statistics from Statistics Portugal (most up-to-date versions available). Estimates for operators under the assimilation threshold and non-responses are included in Intra-EU trade.

Notes:

- [1] Sum of Exports to EU and Exports to third countries.
 [2] 12 months ending in april 2012
 [3] $(\text{may 11-apr 12})/(\text{may 10-apr 11}) \times 100 - 100$
 [4] Contributions to growth, shift share analysis: $(\text{rate of change}) \times (\text{weight in the previous period}) \div 100$.
 [5] African Countries of Portuguese Official Language
 [6] African, Caribbean and Pacific Group of States
 [7] Community of Portuguese Language Countries
 [8] Commonwealth of Independent States

Chart 5 – Share of Services in total Trade



Source: GEE, based on data from the Balance of Payments Statistics of the Bank of Portugal.

Notes:

The Exports from the Balance of Payments (Credit) corresponds to the Exports in International Trade Statistics (sum of Exports of goods to the EU with the Exports to Third Countries).

The Imports from the Balance of Payments (Debit) corresponds to the Imports in International Trade Statistics (sum of the Imports of goods from the EU with the Imports from Third Countries).

Table 19 - Trade of Goods and Services as a percentage of GDP

| | 2008 | 2009 | 2010 | 2011 | 2009 | | | | 2010 | | | | 2011 | | | | 2012 |
|--|-------------|--------------|-------------|-------------|--------------|--------------|-------------|-------------|-------------|-------------|-------------|-------------|-------------|-------------|-------------|--------------|-------------|
| | | | | | Q1 | Q2 | Q3 | Q4 | Q1 | Q2 | Q3 | Q4 | Q1 | Q2 | Q3 | Q4 | |
| Current Values as a percentage of GDP | | | | | | | | | | | | | | | | | |
| Exports (Fob) | 32,4 | 28,0 | 31,0 | 35,5 | 26,8 | 27,4 | 28,9 | 29,0 | 29,0 | 30,7 | 32,1 | 32,3 | 33,4 | 35,4 | 36,7 | 36,6 | 37,4 |
| - Goods | 23,8 | 20,0 | 22,5 | 26,2 | 18,7 | 19,4 | 21,0 | 20,9 | 20,9 | 22,2 | 23,5 | 23,6 | 24,5 | 26,0 | 27,1 | 27,2 | 27,8 |
| - Services | 8,6 | 8,0 | 8,5 | 9,3 | 8,1 | 8,0 | 7,9 | 8,1 | 8,1 | 8,5 | 8,6 | 8,7 | 8,9 | 9,4 | 9,6 | 9,4 | 9,6 |
| Imports (Fob) | 42,5 | 35,4 | 38,2 | 39,4 | 34,3 | 34,2 | 36,9 | 36,4 | 35,9 | 38,9 | 38,1 | 39,8 | 39,0 | 40,3 | 40,5 | 37,8 | 38,9 |
| - Goods | 36,8 | 30,0 | 32,5 | 33,4 | 28,9 | 28,6 | 31,5 | 31,0 | 30,5 | 33,2 | 32,4 | 34,1 | 33,4 | 34,1 | 34,3 | 31,6 | 33,0 |
| - Services | 5,7 | 5,4 | 5,6 | 6,1 | 5,4 | 5,6 | 5,4 | 5,4 | 5,4 | 5,7 | 5,7 | 5,7 | 5,6 | 6,3 | 6,2 | 6,1 | 5,9 |
| Annual real growth rate | | | | | | | | | | | | | | | | | |
| Exports (Fob) | -0,1 | -10,9 | 8,8 | 7,6 | -18,7 | -14,6 | -9,0 | -0,4 | 9,5 | 9,6 | 8,4 | 7,8 | 8,4 | 8,8 | 6,7 | 6,6 | 7,9 |
| - Goods | -0,6 | -12,4 | 9,7 | 7,9 | -22,1 | -17,1 | -9,2 | 0,4 | 12,8 | 10,8 | 7,7 | 8,1 | 8,3 | 9,0 | 6,6 | 7,7 | 9,7 |
| - Services | 1,4 | -6,6 | 6,3 | 6,8 | -8,6 | -7,2 | -8,2 | -2,3 | 1,5 | 6,3 | 10,6 | 6,9 | 8,9 | 8,3 | 7,0 | 3,4 | 3,0 |
| Imports (Fob) | 2,3 | -10,0 | 5,4 | -5,3 | -15,6 | -13,9 | -7,8 | -2,4 | 6,8 | 9,8 | 1,3 | 4,1 | -1,1 | -4,3 | -2,8 | -12,8 | -4,0 |
| - Goods | 2,1 | -10,6 | 5,7 | -6,7 | -17,2 | -15,4 | -7,8 | -1,4 | 7,9 | 11,2 | 0,5 | 3,9 | -1,3 | -6,4 | -3,7 | -14,8 | -4,8 |
| - Services | 3,8 | -6,3 | 3,6 | 3,1 | -4,7 | -4,8 | -7,8 | -7,9 | 0,7 | 1,9 | 6,5 | 5,5 | 0,6 | 8,4 | 3,0 | 0,2 | 0,4 |

Source: GEE, based on data from the Quarterly National Accounts (base 2006) of Statistics Portugal. Includes Intra and Extracommunity trade.

Table 20 - Goods and Services (Credit) - Services components

values in Millions of Euros

| CREDIT (Exports) | january to march | | Structure (%) | | | | Growth rates and contributions to growth | | | |
|-------------------------------------|------------------|---------------|---------------|--------------|--------------|--------------|--|------------------------------|-------------|------------------------------|
| | | | Annual | | jan-mar | | Last 12 months ^[1] | | jan-mar | |
| | 2011 | 2012 | 2006 | 2011 | 2011 | 2012 | y.o.y., % ^[2] | contrib. p.p. ^[3] | y.o.y., % | contrib. p.p. ^[3] |
| Goods and Services | 14 111 | 15 302 | 100,0 | 100,0 | 100,0 | 100,0 | 11,6 | 11,6 | 8,4 | 8,4 |
| Goods | 10 254 | 11 403 | 71,0 | 69,0 | 72,7 | 74,5 | 13,7 | 9,3 | 11,2 | 8,1 |
| Services | 3 857 | 3 898 | 29,0 | 31,0 | 27,3 | 25,5 | 7,0 | 2,2 | 1,1 | 0,3 |
| Transportation | 1 197 | 1 271 | 7,1 | 8,4 | 8,5 | 8,3 | 8,2 | 0,7 | 6,2 | 0,5 |
| Travel | 1 283 | 1 376 | 13,2 | 13,2 | 9,1 | 9,0 | 7,2 | 1,0 | 7,2 | 0,7 |
| Communications services | 102 | 108 | 0,9 | 0,8 | 0,7 | 0,7 | 0,9 | 0,0 | 5,1 | 0,0 |
| Construction services | 134 | 109 | 0,8 | 0,9 | 1,0 | 0,7 | 1,9 | 0,0 | -18,4 | -0,2 |
| Insurance services | 36 | 31 | 0,2 | 0,2 | 0,3 | 0,2 | -3,2 | 0,0 | -14,1 | 0,0 |
| Financial services | 51 | 44 | 0,4 | 0,4 | 0,4 | 0,3 | 23,9 | 0,1 | -13,6 | 0,0 |
| Computer and information services | 87 | 114 | 0,3 | 0,6 | 0,6 | 0,7 | 35,9 | 0,2 | 31,5 | 0,2 |
| Royalties and license fees | 8 | 14 | 0,1 | 0,1 | 0,1 | 0,1 | 65,2 | 0,0 | 70,5 | 0,0 |
| Other business services | 845 | 708 | 5,2 | 5,8 | 6,0 | 4,6 | 4,4 | 0,3 | -16,1 | -1,0 |
| Personal, cult., and recreat. Serv. | 62 | 65 | 0,4 | 0,4 | 0,4 | 0,4 | -8,8 | 0,0 | 4,9 | 0,0 |
| Government services | 53 | 58 | 0,3 | 0,3 | 0,4 | 0,4 | 3,6 | 0,0 | 10,0 | 0,0 |

Source: GEE, based on data from the Balance of Payments Statistics of Banco de Portugal.

Notes:

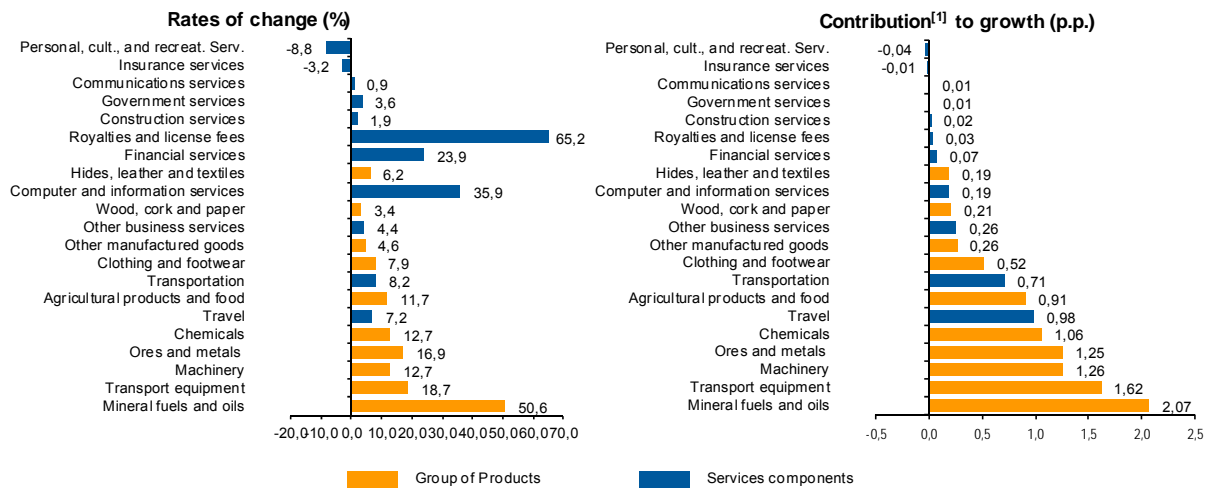
[1] 12 months ending in march 2012

[2] (apr 11-mar 12)/(apr 10-mar 11) x 100 - 100

[3] Contributions to growth, shift share analysis: (rate of change) x (weight in the previous period) ÷ 100. Measures the proportion of growth of Imports attributable to each category specified.

Chart 6 - Growth rates of exports of goods and services and contribution to growth

Previous 12 months ending in march 2012



Source: GEE, based on data from the Bank de Portugal for Exports of goods and services, and Statistics Portugal, for the structure of exports of goods. The distribution of the contribution of growth of exports of goods (data from the Balance of Payments, Bank of Portugal) by group of products follows the structure implicit in the database of International Trade Statistics Portugal for analogous Goods (sum of Exports of goods to the EU with the Exports to Third Countries).

Notes:

The Exports from the Balance of Payments (Credit) corresponds to the Exports in International Trade Statistics (sum of Exports of goods to the EU with the Exports to Third Countries).

[1] Contribution to growth, shift-share analysis: (rate of change) x (weight in the previous period) ÷ 100. The sum corresponds to the growth rate of Exports of Goods and Services over the past 12 months, according to statistics from the Balance of Payments Bank of Portugal (11,6%).

Table 21 - Goods and Services (Credit) - Services components
Annual rate of change (2004-2012)

| Credit (Exports) | Share in 2011 (%) | 2004 | 2005 | 2006 | 2007 | 2008 | 2009 | 2010 | 2011 | jan-mar 2012 |
|-------------------------------------|-------------------|------------|------------|-------------|-------------|------------|--------------|-------------|-------------|--------------|
| Goods and Services | 100,0 | 6,3 | 1,5 | 16,4 | 9,9 | 2,8 | -15,3 | 12,7 | 13,3 | 8,4 |
| Goods | 69,0 | 5,7 | 0,7 | 15,1 | 7,5 | 1,8 | -18,3 | 15,2 | 15,4 | 11,2 |
| Services | 31,0 | 8,0 | 3,5 | 19,9 | 15,7 | 5,3 | -8,7 | 7,7 | 9,0 | 1,1 |
| Transportation | 8,4 | 9,1 | 11,4 | 41,7 | 18,9 | 10,4 | -12,6 | 13,0 | 10,9 | 6,2 |
| Travel | 13,2 | 5,9 | 0,1 | 7,6 | 10,9 | 0,5 | -7,2 | 10,0 | 7,2 | 7,2 |
| Communications services | 0,8 | 18,8 | 20,4 | 8,6 | 16,4 | 4,7 | -15,6 | -2,9 | 0,5 | 5,1 |
| Construction services | 0,9 | 27,4 | -15,7 | 45,9 | 40,9 | 8,3 | -21,9 | -1,9 | 13,9 | -18,4 |
| Insurance services | 0,2 | 32,9 | -26,5 | 14,2 | 5,9 | 5,1 | 3,3 | -9,1 | 11,1 | -14,1 |
| Financial services | 0,4 | 30,6 | -9,2 | 16,8 | 25,8 | -4,7 | -32,7 | 4,4 | 41,6 | -13,6 |
| Computer and information services | 0,6 | 20,6 | 4,5 | 41,6 | 36,8 | 15,3 | 1,0 | 1,1 | 37,7 | 31,5 |
| Royalties and license fees | 0,1 | -15,7 | 69,5 | 51,4 | 10,0 | -29,8 | 150,5 | -71,7 | 41,2 | 70,5 |
| Other business services | 5,8 | 4,3 | 8,9 | 27,0 | 19,5 | 10,2 | -5,9 | 1,7 | 8,7 | -16,1 |
| Personal, cult., and recreat. Serv. | 0,4 | 30,8 | 6,7 | 22,5 | -6,3 | 7,1 | 10,7 | 20,7 | -11,6 | 4,9 |
| Government services | 0,3 | 6,8 | -15,4 | 17,7 | 10,3 | 0,5 | -2,4 | 17,6 | 3,7 | 10,0 |

Source: GEE, based on data from the Balance of Payments Statistics of Banco de Portugal.

Table 22 - Goods and Services (Debit) - Services components

values in Millions of Euros

| DEBIT (Imports) | january to march | | Structure (%) | | | | Growth rates and contributions to growth | | | |
|-------------------------------------|---------------------------|---------------|---------------|--------------|--------------|--------------|--|------------------------------|-------------|------------------------------|
| | | | Annual | | jan-mar | | Last 12 months ^[1] | | jan-mar | |
| | 2011 | 2012 | 2006 | 2011 | 2011 | 2012 | y.o.y., % ^[2] | contrib. p.p. ^[3] | y.o.y., % | contrib. p.p. ^[3] |
| | Goods and Services | 16 706 | 16 031 | 100,0 | 100,0 | 100,0 | 100,0 | -1,2 | -1,2 | -4,0 |
| Goods | 14 055 | 13 521 | 84,9 | 83,0 | 84,1 | 84,3 | -2,0 | -1,7 | -3,8 | -3,2 |
| Services | 2 651 | 2 510 | 15,1 | 17,0 | 15,9 | 15,7 | 3,0 | 0,5 | -5,3 | -0,8 |
| Transportation | 788 | 790 | 4,7 | 5,0 | 4,7 | 4,9 | 2,4 | 0,1 | 0,2 | 0,0 |
| Travel | 685 | 688 | 4,2 | 4,4 | 4,1 | 4,3 | 0,3 | 0,0 | 0,4 | 0,0 |
| Communications services | 99 | 100 | 0,6 | 0,6 | 0,6 | 0,6 | -3,0 | 0,0 | 1,4 | 0,0 |
| Construction services | 28 | 24 | 0,2 | 0,2 | 0,2 | 0,1 | 14,9 | 0,0 | -14,6 | 0,0 |
| Insurance services | 60 | 62 | 0,3 | 0,3 | 0,4 | 0,4 | -1,8 | 0,0 | 3,0 | 0,0 |
| Financial services | 78 | 72 | 0,3 | 0,8 | 0,5 | 0,4 | 98,2 | 0,4 | -8,5 | 0,0 |
| Computer and information services | 87 | 96 | 0,4 | 0,7 | 0,5 | 0,6 | 19,1 | 0,1 | 10,1 | 0,1 |
| Royalties and license fees | 92 | 95 | 0,5 | 0,6 | 0,5 | 0,6 | 1,2 | 0,0 | 3,3 | 0,0 |
| Other business services | 595 | 437 | 3,0 | 3,6 | 3,6 | 2,7 | -3,1 | -0,1 | -26,7 | -1,0 |
| Personal, cult., and recreat. Serv. | 116 | 125 | 0,6 | 0,7 | 0,7 | 0,8 | 0,1 | 0,0 | 8,2 | 0,1 |
| Government services | 23 | 23 | 0,3 | 0,1 | 0,1 | 0,1 | -19,3 | 0,0 | -2,5 | 0,0 |

Source: GEE, based on data from the Balance of Payments Statistics of Banco de Portugal for the Total Exports of Goods and Services.

Notes:

Fob values for Imports of goods.

[1] 12 months ending in march 2012

[2] (apr 11-mar 12)/(apr 10-mar 11) x 100 - 100

[3] Contributions to growth, shift share analysis: (rate of change) x (weight in the previous period) ÷ 100. Measures the proportion of growth of Imports attributable to each category specified.