

Statistics of International Trade

Nº 8/2012

Includes baseline data from Statistics Portugal for the international trade of Portugal

■ January to June 2012 - Intra + Extra-EU Trade

Contents

Global Evolution

1. Recent Trade Balance	Pag. 3
2. Trade Balance with and without energy products	4
3. Trade Balance – aggregate data (Intra+Extra)	4
4. Monthly and quarterly evolution	5

Exports of Goods

5. By Group of Products (Intra+Extra)	6
6. By Group of Products (Extra)	7
7. By Group of Products – growth rate and contribution to growth	8
8. From selected markets (Intra+Extra)	9
9. From selected markets (Extra)	10
10. By destination market – structure (%)	10
11. By destination market – growth rate and contribution to growth	11

Imports of Goods

12. By Group of Products (Intra+Extra EU)	12
13. From a selection of markets (Intra+Extra)	13
14. By Group of Products (Extra EU)	14
15. From a selection of markets (Extra)	14

By geographical and economic areas

16. Main Countries (Intra and Extra)	15
17. Imports: contribution to growth (Intra and Extra)	17
18. Exports: contribution to growth (Intra and Extra)	19

Goods and Services

19. Trade in goods and services as a percentage of GDP	21
20. Goods and Services (credit) – Services components	22
21. Goods and Services (credit) – growth rate	23
22. Goods and Services (debit) – Services components	23

Charts Index

1. Rate of coverage of the imports by the exports of goods	2
2. Growth rate of exports by Group of Products and contribution to growth	7
3. Growth rate of exports by markets and contribution to growth	9
4. Growth rate of imports by markets and contribution to growth	13
5. Share of services in total trade	21
6. Growth rate of exports of goods and services and contribution to growth	22

NOTE

In **June 2010**, Statistics Portugal announced a new data series on International Trade for the period 1993-2009. This new series resulted from a review process of its methodology, which reflected the need to obtain results with greater reliability and accuracy, and includes, in addition to various methodological changes, new information reported by companies.

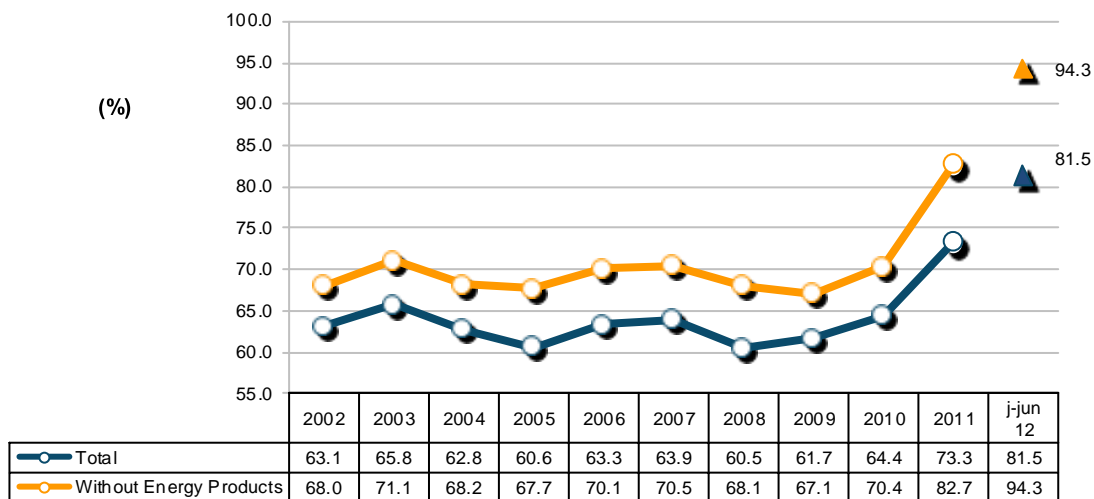
Since 1993, following the creation of the Single Market, the collection of information relating to international trade in goods is done by a new system supported by a compulsory survey (Intrastat declaration) for all operators, whose trade in goods with other Member States exceeds certain thresholds (assimilation threshold). Since 2005, and following the Community rules on quality control of the statistics on International Trade, a confrontation between regular information from the Intrastat system and data of an administrative nature was put in place, which included statements from Value Added Tax (VAT), as well as an analysis of the asymmetries with the statistics reported by other member countries. Following that, estimates for the total international trade, based on estimates for companies that are below the threshold of assimilation, as well as non-response of Intra-community trade started to be published.

The entry into force of “*Informação Empresarial Simplificada*” (IES) in 2007, contributed to ease the comparison of data on international trade with other sources, now made possible from 2006 onwards (reference period for the data). IES, along with information on the VAT constitutes an important source of information for the validity of the quality of the statistics on International Trade.

In **July 2012**, the magnitude of an error detected on the data declared by an important enterprise led Statistics Portugal to make an extraordinary revision on 2011 and January 2012 data (Intra-EU Trade), which is reflected in this publication.

Global Evolution¹

**Chart 1 – Progress of the coverage rate (fob/cif),
% imports by exports of goods
Intra + Extra EU Trade**



Source: GEE, based on data on International Trade statistics from Statistics Portugal (most up-to-date versions available). Estimates for operators under the assimilation threshold and non-responses are included in Intra-EU trade.

¹ Database of international trade (Intra and Extra EU) released by Statistics Portugal (SP) for the period of January to June 2012, corresponding to preliminary versions for both intra and extra community trade. The data for intratrade includes estimates for non-responses (value of transactions of companies for which SP has not yet received information), as well as periodic reporting of companies that are below the assimilation threshold (annual value of intra-Community below which operators are exempted from Intrastat statistical declaration, limited to delivery of the periodic tax declaration: in the case of Portugal, 200 thousand euros for imports from EU and 250 thousand for exports to EU in 2011). On the other hand, the current methodology considers, in addition to the regular comparison between the Intrastat declarations and Value Added Tax (VAT), the comparison with the data obtained from “*Informação Empresarial Simplificada*” (IES).

Table 1 – Recent evolution of the Portuguese Trade Balance (Goods)

Preliminary data version of january to june 2012

Intra + Extra-EU	january to june			Last 3 months			Last 12 months		
	2011	2012	y.o.y. %	apr 11 - jun 11	apr 12 - jun 12	y.o.y. %	jul 10- jun 11	jul 11- jun 12	y.o.y. %
Millions of Euros									
Exports (fob)	20 943	22 846	9.1	10 730	11 461	6.8	39 898	44 229	10.9
Imports (cif)	29 620	28 033	-5.4	15 055	13 812	-8.3	58 692	56 143	-4.3
Imports (fob)	28 224	26 713	-5.4	14 346	13 162	-8.3	55 928	53 499	-4.3
Trade Balance (fob-cif)	-8 676	-5 187	-40.2	-4 325	-2 352	-45.6	-18 794	-11 915	-36.6
Trade Balance (fob-fob)	-7 281	-3 866	-46.9	-3 616	-1 701	-53.0	-16 030	-9 270	-42.2
Rate of Coverage (fob/cif), %	70.7	81.5	-	71.3	83.0	-	68.0	78.8	-
Rate of Coverage (fob/fob), %	74.2	85.5	-	74.8	87.1	-	71.3	82.7	-
Without Energy products:									
Exports (fob)	19 568	20 891	6.8	9 892	10 461	5.8	37 320	40 550	8.7
Imports (cif)	24 532	22 146	-9.7	12 201	11 062	-9.3	49 430	45 050	-8.9
Imports (fob)	23 376	21 103	-9.7	11 627	10 541	-9.3	47 102	42 928	-8.9
Trade Balance (fob-cif)	-4 963	-1 254	-74.7	-2 309	-601	-74.0	-12 110	-4 500	-62.8
Trade Balance (fob-fob)	-3 808	-211	-94.4	-1 735	-80	-95.4	-9 782	-2 378	-75.7
Rate of Coverage (fob/cif), %	79.8	94.3	-	81.1	94.6	-	75.5	90.0	-
Rate of Coverage (fob/fob), %	83.7	99.0	-	85.1	99.2	-	79.2	94.5	-
Millions US\$									
Exports (fob)	29 425	29 621	0.7						
Imports (cif)	41 609	36 357	-12.6						
Imports (fob)	39 649	34 644	-12.6						
Trade Balance (fob-cif)	-12 184	-6 736	-44.7						
Trade Balance (fob-fob)	-10 225	-5 024	-50.9						

Extra-EU	january to june			Last 3 months			Last 12 months		
	2011	2012	y.o.y. %	apr 11 - jun 11	apr 12 - jun 12	y.o.y. %	jul 10- jun 11	jul 11- jun 12	y.o.y. %
Millions of Euros									
Exports (fob)	5 087	6 402	25.8	2 715	3 251	19.7	9 925	12 296	23.9
Imports (cif)	7 862	7 932	0.9	4 324	3 888	-10.1	14 760	15 651	6.0
Imports (fob)	7 492	7 558	0.9	4 120	3 705	-10.1	14 065	14 914	6.0
Trade Balance (fob-cif)	-2 775	-1 530	-44.8	-1 609	-637	-60.4	-4 834	-3 355	-30.6
Trade Balance (fob-fob)	-2 404	-1 157	-51.9	-1 405	-454	-67.7	-4 139	-2 617	-36.8
Rate of Coverage (fob/cif), %	64.7	80.7	-	62.8	83.6	-	67.2	78.6	-
Rate of Coverage (fob/fob), %	67.9	84.7	-	65.9	87.7	-	70.6	82.4	-
Without Energy products:									
Exports (fob)	4 284	5 294	23.6	2 171	2 770	27.6	8 429	10 223	21.3
Imports (cif)	3 994	3 497	-12.5	2 011	1 788	-11.1	7 824	7 120	-9.0
Imports (fob)	3 806	3 332	-12.5	1 916	1 704	-11.1	7 455	6 785	-9.0
Trade Balance (fob-cif)	290	1 798	520.0	160	982	513.3	605	3 102	412.4
Trade Balance (fob-fob)	478	1 962	310.5	255	1 066	318.3	974	3 438	253.0
Rate of Coverage (fob/cif), %	107.3	151.4	-	108.0	154.9	-	107.7	143.6	-
Rate of Coverage (fob/fob), %	112.6	158.9	-	113.3	162.5	-	113.1	150.7	-

Source: GEE, based on data on International Trade statistics from Statistics Portugal (most up-to-date versions available). Estimates for operators under the assimilation threshold and non-responses are included in Intra-EU trade.

Notes:

Sum of Exports to EU and Exports to third countries.

Sum of Imports from EU and Imports from third countries.

Conversion factor used cif-fob for 2008, 2009, 2010, 2011 and 2012: 0.9529

Table 2 – Trade Balance (goods) of Portugal with and without Energy Products (2007-2012)

values in Millions of Euros

Intra + Extra EU	2007	2008	2009	2010	2011	jan-jun	
						2011	2012
With Energy Products							
Exports (fob)	38 294	38 847	31 697	36 762	42 326	20 943	22 846
<i>y.o.y., %</i>	7.4	1.4	-18.4	16.0	15.1	-	9.1
Imports (cif)	59 927	64 194	51 379	57 053	57 730	29 620	28 033
<i>y.o.y., %</i>	6.5	7.1	-20.0	11.0	1.2	-	-5.4
Rate of Coverage (fob/cif), %	63.9	60.5	61.7	64.4	73.3	70.7	81.5
Without Energy Products							
Exports (fob)	36 568	36 688	30 151	34 297	39 227	19 568	20 891
<i>y.o.y., %</i>	8.3	0.3	-17.8	13.7	14.4	-	6.8
Imports (cif)	51 870	53 884	44 912	48 726	47 436	24 532	22 146
<i>y.o.y., %</i>	7.7	3.9	-16.7	8.5	-2.6	-	-9.7
Rate of Coverage (fob/cif), %	70.5	68.1	67.1	70.4	82.7	79.8	94.3

Memo:
Energy Products:

Exports (fob)	1 726	2 159	1 545	2 465	3 099	1 375	1 955
<i>y.o.y., %</i>	-8.6	25.1	-28.4	59.5	25.7	-	42.2
Imports (cif)	8 056	10 310	6 467	8 327	10 294	5 088	5 887
<i>y.o.y., %</i>	-0.8	28.0	-37.3	28.8	23.6	-	15.7

Source: GEE, based on data on International Trade statistics from Statistics Portugal (most up-to-date versions available). Estimates for operators under the assimilation threshold and non-responses are included in Intra-EU trade.

**Table 3 – Trade Balance
Aggregated data (Intra + Extra EU)**

values in Millions of Euros

january to june	2011	2012	<i>y.o.y., %</i>
Intra + Extra EU			
Exports (fob)	20 943	22 846	9.1
Imports (cif)	29 620	28 033	-5.4
Trade Balance (fob-cif)	-8 676	-5 187	-40.2
Rate of coverage (fob/cif), %	70.7	81.5	-
Intra EU			
Exports (fob)	15 856	16 445	3.7
Imports (cif)	21 758	20 101	-7.6
Trade Balance (fob-cif)	-5 902	-3 656	-38.0
Rate of coverage (fob/cif), %	72.9	81.8	-
Extra EU			
Exports (fob)	5 087	6 402	25.8
Imports (cif)	7 862	7 932	0.9
Trade Balance (fob-cif)	-2 775	-1 530	-44.8
Rate of coverage (fob/cif), %	64.7	80.7	-

Source: GEE, based on data on International Trade statistics from Statistics Portugal (most up-to-date versions available). Estimates for operators under the assimilation threshold and non-responses are included in Intra-EU trade.

Table 4 – Monthly and quarterly evolution of Portuguese International Trade

Preliminary data version of january to june 2012

values in Millions of Euros						
Intra+Extra EU-27	IMPORTS (cif)			EXPORTS (fob)		
	2011	2012	y.o.y., %	2011	2012	y.o.y., %
jan	4 453	4 600	3.3	3 121	3 520	12.8
feb	4 636	4 607	-0.6	3 314	3 771	13.8
mar	5 475	5 014	-8.4	3 779	4 095	8.4
apr	5 010	4 374	-12.7	3 441	3 539	2.9
may	5 438	4 943	-9.1	3 701	4 003	8.2
jun	4 607	4 496	-2.4	3 588	3 919	9.2
jul	4 906			3 777		
aug	4 234			2 924		
sep	5 100			3 792		
oct	4 720			3 779		
nov	4 744			3 857		
dec	4 406			3 253		
Q1	14 565	14 221	-2.4	10 213	11 386	11.5
Q2	15 055	13 812	-8.3	10 730	11 461	6.8
Q3	14 241			10 493		
Q4	13 869			10 889		

Intra EU-27	IMPORTS (cif)			EXPORTS (fob)		
	2011	2012	y.o.y., %	2011	2012	y.o.y., %
jan	3 361	3 180	-5.4	2 420	2 553	5.5
feb	3 538	3 369	-4.8	2 528	2 720	7.6
mar	4 128	3 628	-12.1	2 894	2 962	2.3
apr	3 556	3 163	-11.1	2 552	2 528	-0.9
may	3 778	3 438	-9.0	2 790	2 819	1.1
jun	3 397	3 323	-2.2	2 673	2 863	7.1
jul	3 487			2 817		
aug	3 013			2 055		
sep	3 568			2 792		
oct	3 566			2 777		
nov	3 474			2 783		
dec	3 284			2 263		
Q1	11 027	10 177	-7.7	7 842	8 235	5.0
Q2	10 731	9 924	-7.5	8 014	8 210	2.4
Q3	10 067			7 665		
Q4	10 324			7 823		

Extra EU-27	IMPORTS (cif)			EXPORTS (fob)		
	2011	2012	y.o.y., %	2011	2012	y.o.y., %
jan	1 093	1 420	29.9	702	967	37.8
feb	1 098	1 238	12.7	786	1 051	33.8
mar	1 347	1 386	2.9	885	1 133	28.1
apr	1 454	1 210	-16.8	889	1 011	13.7
may	1 660	1 504	-9.4	911	1 184	30.0
jun	1 211	1 173	-3.1	915	1 056	15.3
jul	1 419			960		
aug	1 222			869		
sep	1 532			1 000		
oct	1 154			1 002		
nov	1 269			1 074		
dec	1 122			990		
Q1	3 538	4 044	14.3	2 372	3 151	32.9
Q2	4 324	3 888	-10.1	2 715	3 251	19.7
Q3	4 173			2 828		
Q4	3 545			3 066		

Source: GEE, based on data on International Trade statistics from Statistics Portugal (most up-to-date versions available). Estimates for operators under the assimilation threshold and non-responses are included in Intra-EU trade.

Exports* of Goods

Table 5 – Portuguese Exports (Intra + Extra EU) of Goods by Group of Products

Of which: products by Chapter (CN-2) above 30 million euros in 2012

Intra + Extra EU (Fob)		Millions of Euros		Structure (%)		Growth rates and contributions to growth			
Grp/ CN-2	Group of Products	jan-jun		jan-jun		Last 12 months ^[1]		jan-jun	
		2011	2012	2011	2012	y.o.y. % ^[2]	Contrib. p.p. (%)	y.o.y. %	Contrib. p.p. (%)
	TOTAL EXPORTS	20 943	22 846	100.0	100.0	10.9	10.9	9.1	9.1
000	Agricultural products and food	2 201	2 405	10.5	10.5	10.7	1.2	9.3	1.0
22	Beverages, spirits and vinegar	441	480	2.1	2.1	11.2	0.3	8.7	0.2
03	Fish and crustaceans, molluscs and other aquatic invertebrates	272	267	1.3	1.2	2.9	0.0	-1.8	0.0
24	Tobacco and manufactured tobacco substitutes	185	216	0.9	0.9	14.2	0.1	16.8	0.1
15	Animal/vegetable fats and oils and their cleavage products; prepared edible fats; animal/vegetable waxes	165	206	0.8	0.9	30.9	0.3	24.9	0.2
20	Preparations of vegetables, fruit, nuts or other parts of plants	152	169	0.7	0.7	11.6	0.1	10.8	0.1
04	Dairy produce; birds eggs; natural honey; edible products of animal origin, nes.	148	163	0.7	0.7	2.2	0.0	9.7	0.1
16	Preparations of meat, of fish or of crustaceans, molluscs or other aquatic invertebrates	121	131	0.6	0.6	14.2	0.1	8.6	0.0
08	Edible fruit and nuts; peel of citrus fruit or melons	116	123	0.6	0.5	8.9	0.1	6.8	0.0
19	Preparations of cereals, flour, starch or milk; pastrycooks products	105	117	0.5	0.5	13.8	0.1	12.0	0.1
07	Edible vegetables and certain roots and tubers	86	89	0.4	0.4	2.7	0.0	4.2	0.0
21	Miscellaneous edible preparations	58	71	0.3	0.3	14.1	0.0	22.1	0.1
02	Meat and edible meat offal	49	62	0.2	0.3	23.5	0.1	26.8	0.1
17	Sugars and sugar confectionery	77	60	0.4	0.3	4.8	0.0	-21.8	-0.1
01	Live animals	29	44	0.1	0.2	27.5	0.0	55.4	0.1
06	Live trees and plants; bulbs, roots and the like; cut flowers and ornamental foliage	50	34	0.2	0.1	-33.2	-0.1	-32.2	-0.1
05	Products of animal origin, not elsewhere specified or included	28	32	0.1	0.1	20.1	0.0	17.5	0.0
09	Coffee, tea, maté and spices	30	32	0.1	0.1	11.4	0.0	5.1	0.0
100	Mineral fuels and oils	1 375	1 955	6.6	8.6	42.7	2.8	42.2	2.8
27	Mineral fuel/oils and products of their distillation; bituminous substances; mineral waxes	1 375	1 955	6.6	8.6	42.7	2.8	42.2	2.8
200	Chemicals	2 699	2 841	12.9	12.4	10.1	1.3	5.2	0.7
39	Plastics and articles thereof	1 023	1 033	4.9	4.5	3.8	0.2	-0.9	0.0
40	Rubber and articles thereof	447	524	2.1	2.3	19.0	0.4	17.3	0.4
29	Organic chemicals	468	446	2.2	2.0	8.9	0.2	-4.9	-0.1
30	Pharmaceutical products	273	331	1.3	1.4	21.1	0.3	21.0	0.3
38	Miscellaneous chemical products	141	139	0.7	0.6	13.5	0.1	-1.2	0.0
32	Tanning/dyeing extracts; tannins & derivatives; colouring matter; paints & varnishes; mastics; inks	92	84	0.4	0.4	-8.8	0.0	-9.5	0.0
34	Soaps, artif. waxes, candles, modelling pastes, 'dental waxes' and dental preparations, washing/lubricating/polishing or scouring prep.	55	75	0.3	0.3	37.6	0.1	34.8	0.1
31	Fertilisers	59	65	0.3	0.3	14.8	0.0	11.2	0.0
33	Essential oils and resinoids; perfumery, cosmetic or toilet preparations	62	59	0.3	0.3	-0.7	0.0	-4.5	0.0
35	Albuminoidal substances; modified starches; glues; enzymes	36	45	0.2	0.2	28.2	0.0	24.8	0.0
28	Inorganic chemicals; organic or inorganic compounds of precious metals/rare-earth metals/radioactive elements/isotopes	36	37	0.2	0.2	8.4	0.0	0.7	0.0
300	Wood, cork and paper	1 850	1 852	8.8	8.1	1.2	0.1	0.2	0.0
48	Paper and paperboard; articles of paper pulp, of paper or of paperboard	805	797	3.8	3.5	-0.1	0.0	-1.0	0.0
45	Cork and articles of cork	431	442	2.1	1.9	3.0	0.1	2.4	0.0
44	Wood and articles of wood; wood charcoal	301	309	1.4	1.4	8.0	0.1	2.6	0.0
47	Pulp of wood or of other fibrous cellulosic material; recovered (waste and scrap) paper or paperboard	278	272	1.3	1.2	-4.3	-0.1	-2.3	0.0
49	Printed books, newspapers, pictures and other products of the printing industry; manuscripts, typescripts and plans	34	33	0.2	0.1	-0.1	0.0	-2.5	0.0
400	Hides, leather and textiles	963	944	4.6	4.1	0.8	0.0	-1.9	-0.1
43	Other made-up textile articles; sets; worn clothing and worn textile articles; rags	258	236	1.2	1.0	-6.6	-0.1	-8.5	-0.1
56	Wadding, felt and nonwovens; special yarns; twine, cordage, ropes and cables and articles thereof	119	121	0.6	0.5	8.0	0.0	1.2	0.0
55	Man-made staple fibres	140	116	0.7	0.5	-12.2	-0.1	-17.1	-0.1
59	Impregnated, coated, covered or laminated textile fabrics; textile artcls for industrial use	76	91	0.4	0.4	21.3	0.1	19.3	0.1
52	Cotton	91	74	0.4	0.3	-9.1	0.0	-18.7	-0.1
60	Knitted or crocheted fabrics	65	66	0.3	0.3	1.8	0.0	1.1	0.0
54	Man-made filaments; strip and the like of man-made textile materials	36	40	0.2	0.2	14.2	0.0	12.5	0.0
58	Special woven fabrics; tufted textile fabrics; lace; tapestries; trimmings; embroidery	38	40	0.2	0.2	12.3	0.0	3.0	0.0
41	Raw hides and skins (other than furskins) and leather	36	39	0.2	0.2	4.6	0.0	7.7	0.0
42	Articles of leather; saddlery and harness; travel goods, handbags and similar containers; articles of animal gut (other than silkworm gut)	26	38	0.1	0.2	50.7	0.1	47.0	0.1
57	Carpets and other textile floor coverings	32	35	0.2	0.2	-1.8	0.0	9.3	0.0
51	Wool, fine or coarse animal hair; horsehair yarn and woven fabric	32	35	0.2	0.2	2.7	0.0	9.6	0.0
500	Clothing and footwear	1 947	2 006	9.3	8.8	5.0	0.5	3.0	0.3
61	Articles of apparel and clothing accessories, knitted or crocheted	792	782	3.8	3.4	0.1	0.0	-1.2	0.0
64	Footwear, gaiters and the like; parts of such articles	748	767	3.6	3.4	6.6	0.2	2.5	0.1
62	Articles of apparel and clothing accessories, not knitted or crocheted	386	432	1.8	1.9	11.1	0.2	11.7	0.2
600	Ores and metals	2 362	2 725	11.3	11.9	17.3	1.9	15.4	1.7
72	Iron and steel	621	630	3.0	2.8	7.0	0.2	1.4	0.0
73	Articles of iron or steel	524	623	2.5	2.7	18.1	0.5	18.9	0.5
71	Natural/cultured pearls, precious stones, precious metals and articles thereof; imitation jewellery; coin	236	422	1.1	1.8	101.6	1.0	78.9	0.9
26	Ores, slag and ash	230	260	1.1	1.1	5.2	0.1	13.1	0.1
76	Aluminium and articles thereof	287	252	1.4	1.1	-8.9	-0.1	-12.2	-0.2
25	Salt; sulphur; earths and stone; plastering materials, lime and cement	124	162	0.6	0.7	16.5	0.1	30.1	0.2
74	Copper and articles thereof	123	143	0.6	0.6	21.0	0.1	15.5	0.1
83	Miscellaneous articles of base metal	123	137	0.6	0.6	9.6	0.1	11.2	0.1
82	Tools, implements, cutlery, spoons and forks, of base metal; parts thereof of base metal	71	80	0.3	0.4	13.0	0.0	12.1	0.0
700	Machinery	3 033	3 438	14.5	15.0	11.9	1.7	13.4	1.9
85	Electrical machinery and equipment; sound recorders/reproducers; parts and accessories thereof	1 804	1 983	8.6	8.7	11.0	1.0	9.9	0.9
84	Nuclear reactors, boilers, machinery and mechanical appliances; parts thereof	1 229	1 455	5.9	6.4	13.4	0.8	18.4	1.1
800	Transport equipment	2 852	2 949	13.6	12.9	7.7	1.0	3.4	0.5
87	Vehicles other than railway or tramway rolling stock, and parts and accessories thereof	2 774	2 839	13.2	12.4	6.6	0.8	2.3	0.3
88	Aircraft, spacecraft, and parts thereof	54	80	0.3	0.3	41.0	0.1	46.9	0.1
900	Other manufactured goods	1 661	1 731	7.9	7.6	4.4	0.4	4.2	0.3
94	Furniture; lamps & lighting fittings, nes.; illuminated signs/nameplates and the like; prefab. buildings	611	627	2.9	2.7	5.0	0.1	2.6	0.1
69	Ceramic products	288	288	1.4	1.3	1.1	0.0	0.2	0.0
70	Glass and glassware	249	250	1.2	1.1	1.8	0.0	0.4	0.0
90	Optical/photographic/cinematographic/measuring/checking/precision/medical/surgical instruments and apparatus	190	221	0.9	1.0	9.1	0.1	16.2	0.1
68	Articles of stone, plaster, cement, asbestos, mica or similar materials	184	206	0.9	0.9	10.8	0.1	11.9	0.1
91	Clocks and watches and parts thereof	31	38	0.1	0.2	31.9	0.0	23.8	0.0
96	Miscellaneous manufactured articles	22	37	0.1	0.2	41.0	0.0	69.8	0.1

Memo:

Total without Energy Products	19 568	20 891	93.4	91.4	8.7	8.1	6.8	6.3
-------------------------------	--------	--------	------	------	-----	-----	-----	-----

Source: GEE, based on data on International Trade statistics from Statistics Portugal (most up-to-date versions available). Estimates for operators under the assimilation threshold and non-responses are included in Intra-EU trade.

Notes:

*Sum of Exports to EU and Exports to third countries.

Composition by Group of Products - 000 (Chap. 01 to 24 of CN) - 100 (Chap. 27) - 200 (Chap. 28 to 40) - 300 (Chap. 44 to 49) - 400 (Chap. 41 to 43, 50 to 60 and 63) - 500 (Chap. 61, 62, 64 to 67) - 600 (Chap. 25, 26, 71 to 83) - 700 (Chap. 84 and 85) - 800 (Chap. 86 to 89) - 900 (Chap. 68 to 70 and 90 to 99).

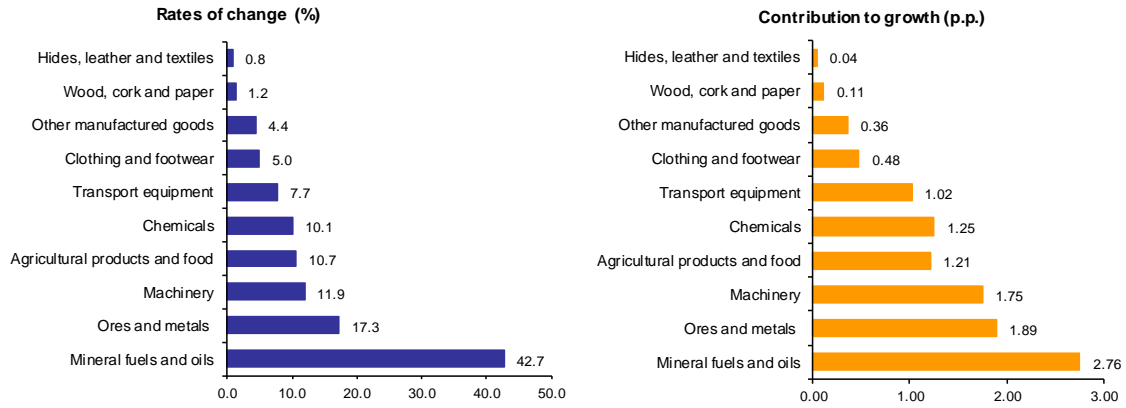
[1] 12 months ending in June 2012

[2] (Jul 11-Jun 12)/(Jul 10-Jun 11) x 100 - 100

[3] Contribution to the growth rate of exports, shift share analysis: (rate of change) x (weight in the previous period) ÷ 100.

Chart 2 - Growth rates of exports of Portuguese goods by group of products and its contribution to growth (Intra + Extra-EU)

Previous 12 months ending in june 2012



Source: Table 5 – Portuguese Exports (Intra + Extra EU) of Goods by Group of Products.

Table 6 - Portuguese Exports of Goods by Group of Products (Extra-EU)

Preliminary data version of january to june 2012

Group of Products	values in Millions of Euros						
	january to june		y.o.y., %		Structure (%)		
	2011	2012	Last 12 months ^[1]	jan-jun 12/11	Last 12 months ^[1]	jan-jun	
			2011	2012	2011	2012	
Total Exports	5 087	6 402	23.9	25.8	100.0	100.0	100.0
000 Agricultural products and food	637	704	16.0	10.4	12.6	12.5	11.0
100 Mineral fuels and oils	803	1 107	38.6	37.8	16.9	15.8	17.3
200 Chemicals	586	662	22.3	13.0	10.6	11.5	10.3
300 Wood, cork and paper	501	531	11.3	6.0	8.8	9.8	8.3
400 Hides, leather and textiles	259	260	2.3	0.5	4.2	5.1	4.1
500 Clothing and footwear	153	182	18.7	18.7	2.9	3.0	2.8
600 Ores and metals	581	826	39.4	42.1	12.0	11.4	12.9
700 Machinery	913	1 168	19.6	27.9	17.6	17.9	18.2
800 Transport equipment	267	506	50.0	89.9	7.0	5.2	7.9
900 Other manufactured goods	386	455	12.9	17.9	7.3	7.6	7.1
Memo:							
<i>Total without Energy Products</i>	<i>4 284</i>	<i>5 294</i>	<i>21.3</i>	<i>23.6</i>	<i>83.1</i>	<i>84.2</i>	<i>82.7</i>

Source: GEE, based on data on International Trade statistics from Statistics Portugal (most up-to-date versions available).

Note:

Composition by Group of Products - 000 (Chap. 01 to 24 of CN) - 100 (Chap. 27) - 200 (Chap. 28 to 40) - 300 (Chap. 44 to 49) - 400 (Chap. 41 to 43, 50 to 60 and 63) - 500 (Chap. 61, 62, 64 to 67) - 600 (Chap. 25, 26, 71 to 83) - 700 (Chap. 84 and 85) - 800 (Chap. 86 to 89) - 900 (Chap. 68 to 70 and 90 to 99).

[1] 12 months ending in june 2012

**Table - 7 – Exports (Intra+Extra EU) of Portuguese goods by Group of Products (2007-2012)
sorted in descending order of their relative weight in 2011**

Growth rate and Contribution to growth

Intra + Extra EU (Fob)		Share in 2011 (%)	y.o.y., %					Contrib. (p.p.) ^[1]		
Grp. and CN-2	Description		2007	2008	2009	2010	2011	jan-jun 2012	2011	jan-jun 2012
	TOTAL	100.0	7.4	1.4	-18.4	16.0	15.1	9.1	15.1	9.1
700	Machinery	14.5	7.6	-0.8	-31.0	6.3	11.6	13.4	1.7	1.9
85	Electrical machinery and equipment; sound recorders/reproducers; parts and accessories thereof	8.7	9.3	-1.4	-37.4	15.5	13.0	9.9	1.2	0.9
84	Nuclear reactors, boilers, machinery and mechanical appliances; parts thereof	5.8	5.1	0.0	-21.4	-4.8	9.6	18.4	0.6	1.1
800	Transport equipment	13.1	2.8	-2.7	-21.4	22.2	22.2	3.4	2.7	0.5
87	Vehicles other than railway or tramway rolling stock, and parts and accessories thereof	12.6	-0.7	-3.5	-19.5	23.2	22.7	2.3	2.7	0.3
200	Chemicals	12.5	10.1	2.4	-14.6	23.0	20.8	5.2	2.5	0.7
39	Plastics and articles thereof	4.7	12.9	0.8	-16.5	29.8	11.8	0.9	0.6	0.0
000	Agricultural products and food	11.3	17.1	15.0	-5.0	7.3	11.8	9.3	1.4	1.0
600	Ores and metals	11.2	11.5	-1.5	-23.9	23.3	23.4	15.4	2.4	1.7
500	Clothing and footwear	9.4	1.9	-2.8	-11.4	3.8	10.2	3.0	1.0	0.3
61	Articles of apparel and clothing accessories, knitted or crocheted	3.7	0.6	-5.5	-11.9	1.5	6.0	-1.2	0.2	0.0
64	Footwear, gaiters and the like; parts of such articles	3.7	2.7	2.6	-8.2	5.1	15.2	2.5	0.6	0.1
300	Wood, cork and paper	8.5	-3.5	1.9	-12.1	26.0	7.1	0.2	0.6	0.0
48	Paper and paperboard; articles of paper pulp, of paper or of paperboard	3.8	0.2	8.3	-4.5	41.0	3.7	-1.0	0.2	0.0
900	Other manufactured goods	7.8	29.6	-3.2	-9.2	4.5	5.2	4.2	0.4	0.3
100	Mineral fuels and oils	7.3	-8.6	25.1	-28.4	59.5	25.7	42.2	1.7	2.8
27	Mineral fuel/oils and products of their distillation; bituminous substances; mineral waxes	7.3	-8.6	25.1	-28.4	59.5	25.7	42.2	1.7	2.8
400	Hides, leather and textiles	4.3	3.7	-5.6	-16.3	13.7	12.0	-1.9	0.5	-0.1

Source: GEE, based on data on International Trade statistics from Statistics Portugal (most up-to-date versions available). Estimates for operators under the assimilation threshold and non-responses are included in Intra-EU trade.

Note:

[1] Contributions to growth, shift share analysis: (rate of change) x (weight in the previous period) ÷ 100.

Table 8 – Exports (Intra+Extra EU) of goods to selected markets

Preliminary data version of January to June 2012

Destination	jan-jun		Structure (%)		Growth rates and contributions to growth			
			jan-jun		Last 12 months ^[1]		jan-jun	
	2011	2012	2011	2012	y.o.y., % ^[2]	Contrib. p.p. ^[3]	y.o.y. %	Contrib. p.p. ^[3]
TOTAL	20 943	22 846	100.0	100.0	10.9	10.9	9.1	9.1
INTRA EU(27)	15 856	16 445	75.7	72.0	6.5	4.9	3.7	2.8
of which:								
EU-15	15 225	15 706	72.7	68.7	6.1	4.4	3.2	2.3
Spain	5 391	5 169	25.7	22.6	-0.1	0.0	-4.1	-1.1
Germany	2 885	2 962	13.8	13.0	7.4	1.0	2.7	0.4
France	2 657	2 766	12.7	12.1	7.7	0.9	4.1	0.5
United Kingdom	1 054	1 183	5.0	5.2	9.1	0.5	12.2	0.6
Netherlands	845	904	4.0	4.0	10.3	0.4	6.9	0.3
Italy	830	834	4.0	3.6	-0.7	0.0	0.5	0.0
Belgium	606	728	2.9	3.2	30.3	0.8	20.2	0.6
Sweden	233	236	1.1	1.0	-1.4	0.0	1.2	0.0
Denmark	128	149	0.6	0.7	12.2	0.1	16.6	0.1
Enlargement	631	738	3.0	3.2	16.8	0.5	16.9	0.5
Poland	191	207	0.9	0.9	20.9	0.2	8.8	0.1
EXTRA EU(27)	5 087	6 402	24.3	28.0	23.9	5.9	25.8	6.3
of which:								
Angola	958	1 312	4.6	5.7	34.2	1.7	37.0	1.7
United States	718	935	3.4	4.1	23.8	0.8	30.2	1.0
Brazil	264	288	1.3	1.3	18.5	0.2	9.0	0.1
Mexico	217	102	1.0	0.4	-21.8	-0.2	-52.8	-0.5
China	156	441	0.7	1.9	144.5	1.0	183.3	1.4
Morocco	192	263	0.9	1.2	35.0	0.3	37.4	0.3
Switzerland	186	209	0.9	0.9	12.1	0.1	12.0	0.1
Algeria	212	183	1.0	0.8	0.0	0.0	-13.5	-0.1
Turkey	154	194	0.7	0.8	22.5	0.2	26.2	0.2
Cape Verde	131	110	0.6	0.5	-10.5	-0.1	-16.4	-0.1
Memo:								
Gibraltar	104	132	0.5	0.6	52.5	0.2	27.5	0.1
ACPOL ^[4]	1 243	1 622	5.9	7.1	29.2	1.9	30.5	1.8
EFTA	233	269	1.1	1.2	14.3	0.2	15.4	0.2

Source: GEE, based on data on International Trade statistics from Statistics Portugal (most up-to-date versions available). Estimates for operators under the assimilation threshold and non-responses are included in Intra-EU trade.

Notes:

Countries ranked in descending order of value in 2011.

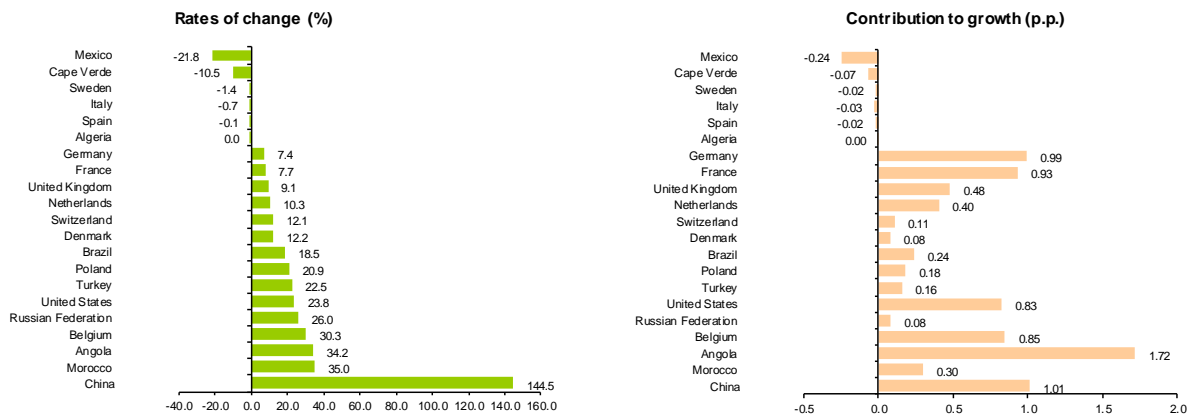
[1] 12 months ending in June 2012

[2] (Jul 11-Jun 12)/(Jul 10-Jun 11) x 100 - 100

[3] Contributions to growth, shift share analysis: (rate of change) x (weight in the previous period) ÷ 100.

[4] African Countries of Portuguese Official Language.

Chart 3 - Growth rates of Exports (Intra + Extra-EU) to selected markets and corresponding contributions to growth
Previous 12 months ending in June 2012



Source: Table 8 – Exports (Intra+Extra EU) of goods from selected markets.

Table 9 - Exports of goods to selected markets

Preliminary data version of January to June 2012

Extra-EU (Fob)		values in Millions of Euros						
Destination	jan-jun		Structure (%)				y.o.y., %	
	2011	2012	Annual		jan-jun		Last 12 months ^[1]	jan-jun 12/11
			2006	2011	2011	2012		
EXTRA EU (27)	5 087	6 402	100.0	100.0	100.0	100.0	23.9	25.8
of which:								
Angola	958	1 312	15.5	21.3	18.8	20.5	34.2	37.0
United States	718	935	27.0	13.6	14.1	14.6	23.8	30.2
Brazil	264	288	3.3	5.3	5.2	4.5	18.5	9.0
Mexico	217	102	1.8	4.2	4.3	1.6	-21.8	-52.8
China	156	441	2.7	3.6	3.1	6.9	144.5	183.3
Morocco	192	263	2.1	3.5	3.8	4.1	35.0	37.4
Switzerland	186	209	3.5	3.4	3.7	3.3	12.1	12.0
Algeria	212	183	0.9	3.3	4.2	2.9	0.0	-13.5
Turkey	154	194	3.0	2.7	3.0	3.0	22.5	26.2
Cape Verde	131	110	2.4	2.3	2.6	1.7	-10.5	-16.4
Memo:								
Gibraltar	104	132	0.4	2.3	2.0	2.1	52.5	27.5
ACPOL ^[2]	1 243	1 622	19.6	26.6	24.4	25.3	29.2	30.5
EFTA	233	269	5.0	4.3	4.6	4.2	14.3	15.4

Source: GEE, based on data on International Trade statistics from Statistics Portugal (most up-to-date versions available).

Note:

Countries ranked in descending order of value in 2011.

[1] (jul 11-jun 12)/(jul 10-jun 11) x 100 - 100

[2] African Countries of Portuguese Official Language.

Table 10 - Exports (Intra + Extra-EU) of Portuguese Goods to a selection of markets (2007-2012) - structure (%)
Main markets in 2011

Destination	2007	2008	2009	2010	2011	jan-jun	
						2011	2012
Total	100.0	100.0	100.0	100.0	100.0	100.0	100.0
INTRA EU(27)	77.1	74.4	75.4	75.0	74.1	75.7	72.0
EU-15	74.7	71.6	72.5	71.9	71.0	72.7	68.7
Spain	28.7	27.9	27.2	26.6	24.9	25.7	22.6
Germany	12.9	12.8	13.0	13.0	13.5	13.8	13.0
France	12.6	11.8	12.4	11.8	12.1	12.7	12.1
United Kingdom	6.0	5.5	5.6	5.5	5.1	5.0	5.2
Netherlands	3.5	3.3	3.6	3.8	3.9	4.0	4.0
Italy	4.1	3.7	3.7	3.8	3.7	4.0	3.6
Belgium	2.6	2.5	2.5	2.9	3.2	2.9	3.2
Enlargement	2.4	2.8	2.8	3.1	3.1	3.0	3.2
EXTRA EU(27)	22.9	25.6	24.6	25.0	25.9	24.3	28.0
Angola	4.4	5.8	7.1	5.2	5.5	4.6	5.7
United States	4.7	3.4	3.2	3.6	3.5	3.4	4.1
Brazil	0.7	0.8	0.9	1.2	1.4	1.3	1.3
Mexico	0.3	0.6	0.6	1.1	1.1	1.0	0.4
China	0.5	0.5	0.7	0.6	0.9	0.7	1.9
Morocco	0.5	0.7	0.7	0.8	0.9	0.9	1.2
Switzerland	0.7	0.8	0.9	0.9	0.9	0.9	0.9
Algeria	0.2	0.5	0.6	0.6	0.8	1.0	0.8
Turkey	0.6	0.6	0.6	0.7	0.7	0.7	0.8
Cape Verde	0.6	0.7	0.7	0.7	0.6	0.6	0.5

Source: GEE, based on data on International Trade statistics from Statistics Portugal (most up-to-date versions available). Estimates for operators under the assimilation threshold and non-responses are included in Intra-EU trade.

Table 11 - Exports (Intra + Extra-EU) of Portuguese Goods to a selection of markets (2008-2012) – structure (%), growth rate and contribution to growth ^[1]
Main markets in 2011

Destination	Share in 2011 (%)	y.o.y., %					Contrib. (p.p.) ^[1]	
		2008	2009	2010	2011	2012 jan-jun	2011	jan-jun 2012
Total	100.0	1.4	-18.4	16.0	15.1	9.1	15.1	9.1
INTRA EU (27)	74.1	-2.1	-17.3	15.4	13.7	3.7	10.3	2.8
EU-15	71.0	-2.8	-17.4	15.0	13.6	3.2	9.8	2.3
Spain	24.9	-1.4	-20.3	13.2	7.9	-4.1	2.1	-1.1
Germany	13.5	-0.1	-17.1	16.5	19.2	2.7	2.5	0.4
France	12.1	-5.0	-14.2	10.3	17.6	4.1	2.1	0.5
United Kingdom	5.1	-8.1	-15.8	12.6	7.0	12.2	0.4	0.6
Netherlands	3.9	-3.6	-10.2	22.4	18.6	6.9	0.7	0.3
Italy	3.7	-9.4	-17.1	17.4	11.2	0.5	0.4	0.0
Belgium	3.2	-1.6	-18.9	34.7	26.4	20.2	0.8	0.6
Enlargement	3.1	19.2	-16.1	25.5	15.1	16.9	0.5	0.5
EXTRA EU (27)	25.9	13.4	-21.5	17.7	19.5	25.8	4.9	6.3
Angola	5.5	34.3	-0.8	-14.6	22.0	37.0	1.1	1.7
United States	3.5	-25.0	-24.5	31.1	12.9	30.2	0.5	1.0
Brazil	1.4	23.9	-7.9	49.5	33.0	9.0	0.4	0.1
Mexico	1.1	85.3	-8.5	98.8	14.2	-52.8	0.2	-0.5
China	0.9	1.6	20.5	6.0	69.7	183.3	0.4	1.4
Morocco	0.9	37.1	-21.2	40.4	28.1	37.4	0.2	0.3
Switzerland	0.9	12.6	-3.5	15.4	11.6	12.0	0.1	0.1
Algeria	0.8	126.9	9.0	8.9	66.8	-13.5	0.4	-0.1
Turkey	0.7	-2.1	-8.0	32.0	12.7	26.2	0.1	0.2
Cape Verde	0.6	13.0	-13.5	18.3	-3.1	-16.4	0.0	-0.1

Source: GEE, based on data on International Trade statistics from Statistics Portugal (most up-to-date versions available). Estimates for operators under the assimilation threshold and non-responses are included in Intra-EU trade.

Note:

[1] Contributions to growth, shift share analysis: (rate of change) x (weight in the previous period) ÷ 100.

Imports* of Goods

Table 12 - Portuguese Imports of goods by Group of Products

Of which: products by Chapter (CN-2) above 55 million euros in 2012

Grp/ CN-2	Groups of Products	Millions of Euros		Structure (%)		Growth rates and contributions to growth			
		jan-jun		jan-jun		Last 12 months ^[1]		jan-jun	
		2011	2012	2011	2012	y.o.y. % ^[2]	Contrib. p.p. [3]	y.o.y. %	Contrib. p.p. [3]
	TOTAL IMPORTS	29 620	28 033	100.0	100.0	-4.3	-4.3	-5.4	-5.4
000	Agricultural products and food	4 307	4 159	14.5	14.8	1.8	0.3	-3.4	-0.5
03	Fish and crustaceans, molluscs and other aquatic invertebrates	671	677	2.3	2.4	3.7	0.1	0.9	0.0
10	Cereals	425	420	1.4	1.5	5.7	0.1	-1.2	0.0
02	Meat and edible meat offal	401	368	1.4	1.3	-6.0	-0.1	-8.4	-0.1
15	Animal/vegetable fats and oils and their cleavage products; prepared edible fats; animal/vegetable waxes	295	267	1.0	1.0	10.7	0.1	-9.2	-0.1
12	Oil seeds/oleaginous fruits/miscellaneous grains, seeds and fruits/industrial or medicinal plants/straw and fodder	281	259	0.9	0.9	-2.0	0.0	-7.8	-0.1
04	Dairy produce; birds eggs; natural honey; edible products of animal origin, nes.	235	236	0.8	0.8	2.1	0.0	0.2	0.0
08	Edible fruit and nuts; peel of citrus fruit or melons	238	210	0.8	0.8	-13.8	-0.1	-11.7	-0.1
19	Preparations of cereals, flour, starch or milk; pastrycooks products	207	209	0.7	0.7	3.2	0.0	1.1	0.0
23	Residues and waste from the food industries; prepared animal fodder	170	185	0.6	0.7	6.9	0.0	8.9	0.0
22	Beverages, spirits and vinegar	172	164	0.6	0.6	-1.5	0.0	-4.9	0.0
21	Miscellaneous edible preparations	178	160	0.6	0.6	-5.5	0.0	-9.8	-0.1
07	Edible vegetables and certain roots and tubers	179	144	0.6	0.5	-17.9	-0.1	-19.3	-0.1
17	Sugars and sugar confectionery	147	131	0.5	0.5	7.9	0.0	-11.1	-0.1
20	Preparations of vegetables, fruit, nuts or other parts of plants	130	126	0.4	0.4	3.5	0.0	-2.9	0.0
09	Coffee, tea, maté and spices	107	119	0.4	0.4	20.8	0.1	10.6	0.0
24	Tobacco and manufactured tobacco substitutes	96	107	0.3	0.4	39.5	0.1	11.3	0.0
16	Preparations of meat, of fish or of crustaceans, molluscs or other aquatic invertebrates	102	101	0.3	0.4	2.9	0.0	-1.4	0.0
01	Live animals	97	94	0.3	0.3	2.2	0.0	-2.6	0.0
18	Cocoa and cocoa preparations	64	67	0.2	0.2	4.1	0.0	4.3	0.0
100	Mineral fuels and oils	5 088	5 887	17.2	21.0	19.8	3.1	15.7	2.7
27	Mineral fuel/oils and products of their distillation; bituminous substances; mineral waxes	5 088	5 887	17.2	21.0	19.8	3.1	15.7	2.7
200	Chemicals	4 735	4 685	16.0	16.7	0.2	0.0	-1.0	-0.2
39	Plastics and articles thereof	1 275	1 179	4.3	4.2	-5.2	-0.2	-7.6	-0.3
30	Pharmaceutical products	1 041	1 043	3.5	3.7	-0.9	0.0	0.2	0.0
29	Organic chemicals	562	699	1.9	2.5	20.3	0.4	24.4	0.5
40	Rubber and articles thereof	418	407	1.4	1.5	2.6	0.0	-2.7	0.0
38	Miscellaneous chemical products	422	381	1.4	1.4	-0.5	0.0	-9.7	-0.1
33	Essential oils and resinoids; perfume, cosmetic or toilet preparations	248	244	0.8	0.9	-2.9	0.0	-1.4	0.0
32	Tanning/dyeing extracts; tannins&derivatives; colouring matter; paints&varnishes; mastics; inks	261	243	0.9	0.9	-4.9	0.0	-6.8	-0.1
34	Soaps, artif. waxes, candles, modelling pastes, 'dental waxes' and dental preparations, washing/lubricating/polishing or scouring prep.	175	168	0.6	0.6	-3.3	0.0	-4.3	0.0
28	Inorganic chemicals; organic or inorganic compounds of precious metals/rare-earth metals/radioactive elements/isotopes	170	162	0.6	0.6	2.4	0.0	-5.1	0.0
31	Fertilisers	90	97	0.3	0.3	-1.3	0.0	-3.3	0.0
300	Hides, wood, cork and paper	1 306	1 181	4.7	4.2	-9.4	-0.4	-14.8	-0.7
48	Paper and paperboard; articles of paper pulp, of paper or of paperboard	562	458	1.9	1.6	-10.5	-0.2	-18.4	-0.3
44	Wood and articles of wood; wood charcoal	309	240	1.0	0.9	-14.5	-0.1	-22.4	-0.2
41	Raw hides and skins (other than furskins) and leather	217	189	0.7	0.7	-6.9	0.0	-12.7	-0.1
42	Articles of leather, saddlery and harness; travel goods, handbags and similar containers; articles of animal gut (other than silkworm gut)	101	113	0.3	0.4	1.1	0.0	12.7	0.0
49	Printed books, newspapers, pictures and other products of the printing industry; manuscripts, typescripts and folders	91	77	0.3	0.3	-19.2	-0.1	-15.9	0.0
45	Cork and articles of cork	69	73	0.2	0.3	14.5	0.0	5.3	0.0
400	Textiles, clothing and footwear	1 960	1 806	6.6	6.4	-8.8	-0.5	-7.9	-0.5
62	Articles of apparel and clothing accessories, not knitted or crocheted	405	393	1.4	1.4	-2.9	0.0	-3.1	0.0
61	Articles of apparel and clothing accessories, knitted or crocheted	389	368	1.3	1.3	-2.9	0.0	-5.3	-0.1
64	Footwear, gaiters and the like; parts of such articles	270	284	0.9	1.0	2.4	0.0	5.2	0.0
52	Cotton	254	168	0.9	0.6	-31.9	-0.3	-33.7	-0.3
54	Man-made filaments; strip and the like of man-made textile materials	142	148	0.5	0.5	5.4	0.0	4.1	0.0
55	Man-made staple fibres	144	106	0.5	0.4	-19.0	-0.1	-25.9	-0.1
63	Other made-up textile articles; sets; worn clothing and worn textile articles; rags	71	63	0.2	0.2	-10.4	0.0	-10.8	0.0
500	Ores and metals	2 706	2 407	9.1	8.6	-8.1	-0.7	-11.0	-1.0
72	Iron and steel	1 077	1 018	3.6	3.6	-1.6	-0.1	-5.4	-0.2
73	Articles of iron or steel	468	393	1.6	1.4	-12.5	-0.2	-16.0	-0.3
74	Copper and articles thereof	355	288	1.2	1.0	-12.9	-0.1	-18.8	-0.2
76	Aluminium and articles thereof	360	284	1.2	1.0	-22.1	-0.3	-21.2	-0.3
83	Miscellaneous articles of base metal	120	119	0.4	0.4	-3.3	0.0	-1.4	0.0
71	Natural/cultured pearls, precious stones, precious metals and articles thereof; imitation jewellery; coin	97	86	0.3	0.3	-3.1	0.0	-11.6	0.0
82	Tools, implements, cutlery, spoons and forks, of base metal; parts thereof of base metal	85	83	0.3	0.3	-2.3	0.0	-1.7	0.0
25	Salt; sulphur; earths and stone; plastering materials, lime and cement	73	67	0.2	0.2	-11.1	0.0	-7.2	0.0
600	Machinery [4]	4 379	4 090	14.8	14.6	-9.3	-1.5	-6.6	-1.0
84	Nuclear reactors, boilers, machinery and mechanical appliances; parts thereof	2 215	2 079	7.5	7.4	-10.5	-0.8	-6.1	-0.5
85	Electrical machinery and equipment; sound recorders/reproducers; parts and accessories thereof	2 164	2 011	7.3	7.2	-8.0	-0.6	-7.1	-0.5
700	Transport equipment [5]	3 513	2 421	11.9	8.6	-31.9	-4.0	-31.1	-3.7
87	Vehicles other than railway or tramway rolling stock, and parts and accessories thereof	3 377	2 349	11.4	8.4	-27.5	-3.1	-30.4	-3.5
800	Other manufactured goods	1 546	1 396	5.2	5.0	-11.4	-0.6	-9.7	-0.5
90	Optical/photographic/cinematographic/measuring/checking/precision/medical/surgical instruments and apparatus	523	476	1.8	1.7	-10.3	-0.2	-8.9	-0.2
94	Furniture; lamps&lighting fittings, nes.; illuminated signs/nameplates and the like; prefab. buildings	393	361	1.3	1.3	-7.3	-0.1	-8.1	-0.1
93	Glass and glassware	168	142	0.6	0.5	-11.4	-0.1	-15.9	-0.1
96	Miscellaneous manufactured articles	47	110	0.2	0.4	58.5	0.1	135.5	0.2
95	Toys, games and sports requisites; parts and accessories thereof	131	102	0.4	0.4	-17.7	-0.1	-22.0	-0.1
68	Articles of stone, plaster, cement, asbestos, mica or similar materials	76	74	0.3	0.3	-10.2	0.0	-2.9	0.0
91	Clocks and watches and parts thereof	60	58	0.2	0.2	-4.4	0.0	-3.6	0.0

Memo:

Total without Energy Products	24 532	22 146	82.8	79.0	-8.9	-7.5	-9.7	-8.1
-------------------------------	--------	--------	------	------	------	------	------	------

Source: GEE, based on data on International Trade statistics from Statistics Portugal (most up-to-date versions available). Estimates for operators under the assimilation threshold and non-responses are included in Intra-EU trade.

Notes:

Sum of Imports from EU and Imports from third countries.

Composition by Group of Products - 000 (Chap. 01 to 24 of CN) - 100 (Chap. 27) - 200 (Chap. 28 to 40) - 300 (Chap. 41 to 49) - 400 (Chap. 50 to 67) - 500 (Chap. 25, 26, 71 to 83) - 600 (Chap. 84 and 85) - 700 (Chap. 86 to 89) - 800 (Chap. 68 to 70 and 90 to 99).

[1] 12 months ending in June 2012

[2] (Jul 11-Jun 12)/(Jul 10-Jun 11) x 100 - 100

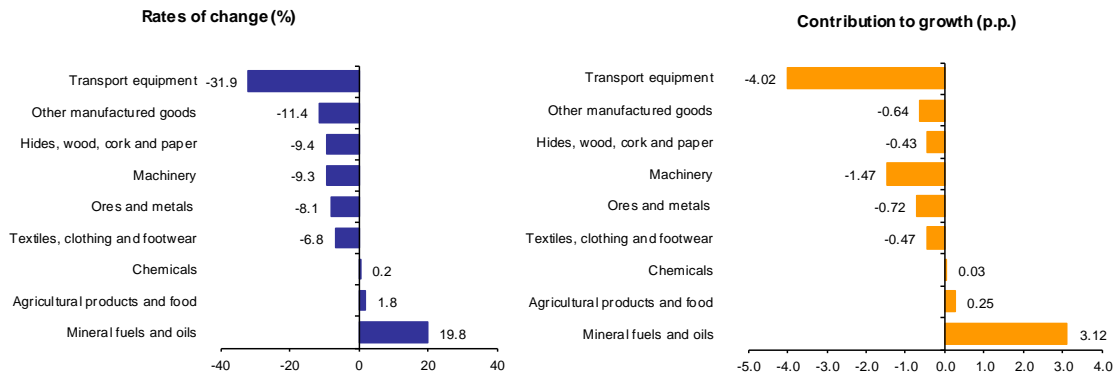
[3] Contribution to the growth rate of exports, shift share analysis: (rate of change) x (weight in the previous period) ÷ 100.

[4] Does not include tractors.

[5] Includes tractors.

Chart 4 - Growth rates of Portuguese Imports (Intra + Extra-EU) of goods by Group of Products and contribution to growth

Previous 12 months ending in June 2012



Source: Table 12 - Portuguese Imports of goods by Groups of Products.

Table 13 - Imports of goods originating from selected markets

Preliminary data version of January to June 2012

Country of Origin	Intra + Extra-EU (Cif)		values in Millions of Euros					
	jan-jun		Structure (%)		Growth rates and contributions to growth			
			jan-jun		Last 12 months ^[1]		jan-jun	
	2011	2012	2011	2012	y.o.y., % ^[2]	Contrib. p.p. ^[3]	y.o.y., %	Contrib. p.p. ^[3]
TOTAL	29 620	28 033	100.0	100.0	-4.3	-4.3	-5.4	-5.4
INTRA EU (27)	21 758	20 101	73.5	71.7	-7.8	-5.9	-7.6	-5.6
of which:								
EU-15	21 025	19 383	71.0	69.1	-8.0	-5.8	-7.8	-5.5
Spain	9 251	8 899	31.2	31.7	-3.8	-1.2	-3.8	-1.2
Germany	3 738	3 251	12.6	11.6	-15.6	-2.1	-13.0	-1.6
France	2 105	1 846	7.1	6.6	-9.8	-0.7	-12.3	-0.9
Italy	1 622	1 471	5.5	5.2	-7.9	-0.4	-9.3	-0.5
Netherlands	1 434	1 330	4.8	4.7	-8.6	-0.4	-7.3	-0.4
United Kingdom	971	886	3.3	3.2	-10.4	-0.4	-8.8	-0.3
Belgium	817	697	2.8	2.5	-15.1	-0.4	-14.7	-0.4
Sweden	332	305	1.1	1.1	-5.6	-0.1	-8.0	-0.1
Ireland	277	272	0.9	1.0	3.7	0.0	-1.9	0.0
Enlargement	733	718	2.5	2.6	-2.2	-0.1	-2.0	-0.1
EXTRA EU (27)	7 862	7 932	26.5	28.3	6.0	1.5	0.9	0.2
of which:								
Nigeria	858	414	2.9	1.5	-25.1	-0.6	-51.8	-1.5
China	715	692	2.4	2.5	-5.4	-0.1	-3.2	-0.1
Brazil	672	648	2.3	2.3	23.3	0.5	-3.7	-0.1
Angola	353	855	1.2	3.1	184.0	1.9	141.9	1.7
United States	555	497	1.9	1.8	4.8	0.1	-10.5	-0.2
Saudi Arabia	469	480	1.6	1.7	30.1	0.4	2.3	0.0
Kazakhstan	340	459	1.1	1.6	39.2	0.5	34.9	0.4
Algeria	539	308	1.8	1.1	-16.8	-0.2	-42.7	-0.8
Russian Federation	357	292	1.2	1.0	-2.0	0.0	-18.4	-0.2
India	295	167	1.0	0.6	-30.5	-0.3	-43.5	-0.4
Norway	300	89	1.0	0.3	-55.9	-0.4	-70.3	-0.7
Switzerland	180	171	0.6	0.6	-4.4	0.0	-4.6	0.0
Japan	175	183	0.6	0.7	-3.2	0.0	5.0	0.0
Memo:								
OPEC ^[4]	2 350	2 416	7.9	8.6	12.6	0.9	2.8	0.2
EFTA	492	274	1.7	1.0	-31.7	-0.5	-44.3	-0.7
ACPOL ^[5]	365	866	1.2	3.1	174.3	1.9	137.1	1.7

Source: GEE, based on data on International Trade statistics from Statistics Portugal (most up-to-date versions available). Estimates for operators under the assimilation threshold and non-responses are included in Intra-EU trade.

Notes:

Countries ranked in descending order of value in 2011.

[1] 12 months ending in June 2012

 [2] $(\text{Jul 11-Jun 12})/(\text{Jul 10-Jun 11}) \times 100 - 100$

 [3] Contributions to growth, shift share analysis: $(\text{rate of change}) \times (\text{weight in the previous period}) \div 100$.

[4] Includes Angola.

[5] African Countries of Portuguese Official Language

Table 14 - Portuguese Imports by Group of Products (Extra-EU)

Preliminary data version of January to June 2012

Group of Products	January to June		y.o.y., (%)		Structure (%)		
	2011	2012	Last 12 months ^[1]	Jan-Jun 12/11	Last 12 months ^[1]	Jan-Jun	
			2011	2012	2011	2012	
Total Imports	7 862	7 932	6.0	0.9	100.0	100.0	100.0
000 Agricultural products and food	1 106	993	2.6	-10.2	12.9	14.1	12.5
100 Mineral fuels and oils	3 868	4 435	23.0	14.7	54.5	49.2	55.9
200 Chemicals	687	681	-2.6	-0.8	8.1	8.7	8.6
300 Hides, wood, cork and paper	222	165	-19.6	-25.8	2.2	2.8	2.1
400 Textiles, clothing and footwear	439	342	-22.0	-22.2	4.6	5.6	4.3
500 Ores and metals	460	315	-25.0	-31.5	4.2	5.9	4.0
600 Machinery ^[2]	655	640	-8.4	-2.4	8.3	8.3	8.1
700 Transport equipment ^[3]	210	191	-3.2	-9.0	2.8	2.7	2.4
800 Other manufactured goods	215	170	-18.1	-20.7	2.4	2.7	2.1

Memo:

Total without Energy Products	3 994	3 497	-9.0	-12.5	45.5	50.8	44.1
-------------------------------	-------	-------	------	-------	------	------	------

Source: GEE, based on data on International Trade statistics from Statistics Portugal (most up-to-date versions available).

Notes:

Composition by Group of Products - 000 (Chap. 01 to 24 of CN) - 100 (Chap. 27) - 200 (Chap. 28 to 40) - 300 (Chap. 41 to 49) - 400 (Chap. 50 to 67) - 500 (Chap. 25, 26, 71 to 83) - 600 (Chap. 84 and 85) - 700 (Chap. 86 to 89) - 800 (Chap. 68 to 70 and 90 to 99).

[1] 12 months ending in June 2012

[2] Does not include farm tractors.

[3] Includes farm tractors.

Table 15 - Imports of goods from selected markets

Preliminary data version of January to June 2012

Country of Origin	Jan-Jun		Structure (%)				y.o.y., %	
	2011	2012	Annual		Jan-Jun		Last 12 months ^[1]	Jan-Jun 12/11
			2006	2011	2011	2012		
EXTRA EU(27)	7 862	7 932	100.0	100.0	100.0	100.0	6.0	0.9
of which:								
Nigeria	858	414	6.0	9.8	10.9	5.2	-25.1	-51.8
China	715	692	6.0	9.6	9.1	8.7	-5.4	-3.2
Brazil	672	648	9.5	9.4	8.6	8.2	23.3	-3.7
Angola	353	855	0.4	7.6	4.5	10.8	184.0	141.9
United States	555	497	6.0	7.0	7.1	6.3	4.8	-10.5
Saudi Arabia	469	480	4.1	5.9	6.0	6.0	30.1	2.3
Kazakhstan	340	459	2.6	5.5	4.3	5.8	39.2	34.9
Algeria	539	308	6.9	5.0	6.9	3.9	-16.8	-42.7
Russian Federation	357	292	5.0	3.6	4.5	3.7	-2.0	-18.4
India	295	167	1.8	3.0	3.8	2.1	-30.5	-43.5
Norway	300	89	5.3	2.7	3.8	1.1	-55.9	-70.3
Switzerland	180	171	2.8	2.3	2.3	2.2	-4.4	-4.6
Japan	175	183	4.3	2.2	2.2	2.3	-3.2	5.0

Memo:

OPEC ^[2]	2 350	2 416	27.2	29.6	29.9	30.5	12.6	2.8
EFTA	492	274	8.3	5.1	6.3	3.5	-31.7	-44.3
ACPOL ^[3]	365	866	0.7	7.9	4.6	10.9	174.3	137.1

Source: GEE, based on data on International Trade statistics from Statistics Portugal (most up-to-date versions available).

Notes:

Countries ranked in descending order of value in 2011.

[1] (Jul 11-Jun 12)/(Jul 10-Jun 11) x 100 - 100

[2] Includes Angola.

[3] African Countries of Portuguese Official Language

By geographical and economic areas

**Table 16 - Portuguese International trade
by geographical and economic areas (Intra + Extra-EU)**

Period of assessment: january to june

Geographic/Economic Areas Main Countries		IMPORTS (Cif) ^[1]				EXPORTS (Fob) ^[2]				values in 1000 Euros		
		2011	2012	Rate of Change %	Struct. 2012 %	2011	2012	Rate of Change %	Struct. 2012 %	Coverage (fob/cif) 2012	Trade Balance (fob-cif)	
Cod										2011	2012	
WORLD		29 619 556	28 033 116	-5.4	100.0	20 943 344	22 846 345	9.1	100.0	81.5	-8 676 212	-5 186 771
INTRA EU (27)		21 757 582	20 101 104	-7.6	71.7	15 856 009	16 444 660	3.7	72.0	81.8	-5 901 573	-3 656 444
001	FR France	2 105 337	1 846 216	-12.3	6.6	2 656 726	2 766 275	4.1	12.1	149.8	551 390	920 059
003	NL Netherlands	1 433 803	1 329 562	-7.3	4.7	845 090	903 522	6.9	4.0	68.0	-588 713	-426 040
004	DE Germany	3 737 689	3 251 357	-13.0	11.6	2 884 956	2 961 816	2.7	13.0	91.1	-852 733	-289 541
005	IT Italy	1 622 282	1 471 302	-9.3	5.2	829 669	833 777	0.5	3.6	56.7	-792 613	-637 525
006	GB United Kingdom	971 344	885 688	-8.8	3.2	1 054 413	1 182 727	12.2	5.2	133.5	83 069	297 039
007	IE Ireland	277 006	271 669	-1.9	1.0	61 750	69 686	12.9	0.3	25.7	-215 256	-201 983
008	DK Denmark	163 935	127 079	-22.5	0.5	128 042	149 311	16.6	0.7	117.5	-35 893	22 232
009	GR Greece	66 682	60 595	-9.1	0.2	54 670	141 434	158.7	0.6	233.4	-12 012	80 839
011	ES Spain	9 251 478	8 899 384	-3.8	31.7	5 391 408	5 169 324	-4.1	22.6	58.1	-3 860 070	-3 730 060
017	BE Belgium	816 717	696 853	-14.7	2.5	605 804	728 274	20.2	3.2	104.5	-210 912	31 421
018	LU Luxembourg	32 509	29 646	-8.8	0.1	28 866	31 501	9.1	0.1	106.3	-3 643	1 855
030	SE Sweden	331 952	305 265	-8.0	1.1	232 999	235 777	1.2	1.0	77.2	-98 953	-69 488
032	FI Finland	76 683	67 134	-12.5	0.2	111 896	130 964	17.0	0.6	195.1	35 212	63 830
038	AT Austria	137 373	141 515	3.0	0.5	111 902	130 747	16.8	0.6	92.4	-25 470	-10 768
046	MT Malta	11 105	9 754	-12.2	0.0	7 017	5 717	-18.5	0.0	58.6	-4 088	-4 037
053	EE Estonia	3 974	6 187	55.7	0.0	6 477	13 225	104.2	0.1	213.7	2 503	7 038
054	LV Latvia	883	2 954	234.5	0.0	3 352	7 579	126.1	0.0	256.5	2 468	4 624
055	LT Lithuania	39 562	27 193	-31.3	0.1	11 254	11 205	-0.4	0.0	41.2	-28 308	-15 988
060	PL Poland	194 800	203 402	4.4	0.7	190 507	207 332	8.8	0.9	101.9	-4 292	3 930
061	CZ Czech Republic	188 978	169 317	-10.4	0.6	138 737	168 772	21.6	0.7	99.7	-50 241	-5 545
063	SK Slovakia	64 341	59 655	-7.3	0.2	44 706	43 782	-2.1	0.2	73.4	-19 636	-15 873
064	HU Hungary	115 413	130 618	13.2	0.5	63 616	86 104	35.3	0.4	65.9	-51 797	-44 514
066	RO Romania	53 008	42 674	-19.5	0.2	111 691	128 454	15.0	0.6	301.0	58 683	85 781
068	BG Bulgaria	39 147	44 876	14.6	0.2	23 568	34 242	45.3	0.1	76.3	-15 579	-10 635
091	SI Slovenia	20 519	20 146	-1.8	0.1	11 149	19 875	78.3	0.1	98.7	-9 370	-2 271
600	CY Cyprus	980	1 015	3.6	0.0	19 194	11 959	-37.7	0.1	1178.7	18 214	10 944
	OTHERS	81	49	-39.5	0.0	226 549	271 281	19.7	1.2	553 194.0	226 468	271 232
EXTRA EU (27)		7 861 974	7 932 012	0.9	28.3	5 087 335	6 401 685	25.8	28.0	80.7	-2 774 639	-1 530 328
of which:												
1-EUROPE		1 020 929	844 814	-17.3	3.0	590 207	716 738	21.4	3.1	84.8	-430 722	-128 076
EFTA		491 694	273 752	-44.3	1.0	233 426	269 441	15.4	1.2	98.4	-258 268	-4 312
024	IS Iceland	11 213	12 849	14.6	0.0	1 789	2 883	61.2	0.0	22.4	-9 424	-9 966
028	NO Norway	300 376	89 252	-70.3	0.3	45 222	57 755	27.7	0.3	64.7	-255 154	-31 497
039	CH Switzerland	179 702	171 465	-4.6	0.6	186 246	208 559	12.0	0.9	121.6	6 544	37 094
OTHERS		529 235	571 061	7.9	2.0	356 781	447 297	25.4	2.0	78.3	-172 454	-123 764
052	TR Turkey	58 095	68 539	18.0	0.2	153 545	193 718	26.2	0.8	282.6	95 450	125 179
075	RU Russian Federation	357 331	291 715	-18.4	1.0	66 113	86 535	30.9	0.4	29.7	-291 218	-205 180
092	HR Croatia	1 989	2 104	5.8	0.0	8 588	10 654	24.1	0.0	506.4	6 598	8 550
2-AFRICA		2 177 758	2 393 007	9.9	8.5	2 015 881	2 515 816	24.8	11.0	105.1	-161 877	122 809
MAGHREB		635 532	432 661	-31.9	1.5	476 901	509 911	6.9	2.2	117.9	-158 631	77 250
204	MA Morocco	79 244	66 391	-16.2	0.2	191 652	263 281	37.4	1.2	396.6	112 408	196 890
208	DZ Algeria	538 734	308 432	-42.7	1.1	211 915	183 337	-13.5	0.8	59.4	-326 819	-125 095
212	TN Tunisia	17 554	57 838	229.5	0.2	73 334	63 293	-13.7	0.3	109.4	55 780	5 455
ACPOL ^[3]		365 349	866 185	137.1	3.1	1 243 457	1 622 250	30.5	7.1	187.3	878 107	756 064
247	CV Cape Verde	5 331	4 247	-20.3	0.0	131 077	109 535	-16.4	0.5	2578.9	125 746	105 288
257	GW Guinea-Bissau	164	19	-88.5	0.0	30 057	39 142	30.2	0.2	206903.7	29 894	39 123
311	ST Sao Tome and Principe	179	157	-12.3	0.0	21 119	22 806	8.0	0.1	14524.4	20 940	22 649
330	AO Angola	353 459	855 058	141.9	3.1	957 601	1 311 887	37.0	5.7	153.4	604 142	456 829
366	MZ Mozambique	6 217	6 704	7.8	0.0	103 602	138 879	34.1	0.6	2071.6	97 385	132 175
OTHERS		1 176 877	1 094 160	-7.0	3.9	295 524	383 655	29.8	1.7	35.1	-881 353	-710 505
216	LY Libyan Arab Jamahiriya	13 639	120 774	785.5	0.4	7 246	12 069	66.6	0.1	10.0	-6 393	-108 705
220	EG Egypt	52 188	87 573	67.8	0.3	31 350	52 511	67.5	0.2	60.0	-20 838	-35 062
272	CI Côte d'Ivoire	6 214	11 465	84.5	0.0	6 004	10 301	71.6	0.0	89.8	-210	-1 164
288	NG Nigeria	858 391	413 983	-51.8	1.5	51 959	72 398	39.3	0.3	17.5	-806 431	-341 585
388	ZA South Africa	44 929	29 504	-34.3	0.1	39 468	47 166	19.5	0.2	159.9	-5 461	17 662

(continues)

Period of assessment: january to june

Geographic/Economic Areas		IMPORTS (Cif) ^[1]				EXPORTS (Fob) ^[2]				Coverage (fob/cif) 2012	Trade Balance (fob-cif)	
Cod	Main Countries	2011	2012	Rate of Change %	Struct. 2012 %	2011	2012	Rate of Change %	Struct. 2012 %		2011	2012
	3-AMERICA		1 863 889	1 746 139	-6.3	6.2	1 485 187	1 741 460	17.3	7.6	99.7	-378 702
NAFTA		779 153	667 837	-14.3	2.4	1 026 663	1 133 909	10.4	5.0	169.8	247 510	466 073
400	US United States	555 257	496 808	-10.5	1.8	717 726	934 518	30.2	4.1	188.1	162 469	437 710
404	CA Canada	120 286	55 864	-53.6	0.2	92 100	97 117	5.4	0.4	173.8	-28 186	41 253
412	MX Mexico	103 609	115 165	11.2	0.4	216 837	102 274	-52.8	0.4	88.8	113 228	-12 890
MERCOSUL		846 709	757 252	-10.6	2.7	300 135	327 238	9.0	1.4	43.2	-546 574	-430 014
508	BR Brazil	672 460	647 624	-3.7	2.3	263 943	287 626	9.0	1.3	44.4	-408 518	-359 998
528	AR Argentina	103 986	57 860	-44.4	0.2	23 906	24 431	2.2	0.1	42.2	-80 080	-33 429
OTHERS		238 028	321 051	34.9	1.1	158 389	280 313	77.0	1.2	87.3	-79 639	-40 738
424	HN Honduras	6 230	4 316	-30.7	0.0	1 386	463	-66.6	0.0	10.7	-4 844	-3 853
436	CR Costa Rica	30 881	19 413	-37.1	0.1	2 819	2 217	-21.3	0.0	11.4	-28 063	-17 196
448	CU Cuba	3 116	14 251	357.4	0.1	13 987	15 410	10.2	0.1	108.1	10 871	1 159
480	CO Colombia	92 489	145 734	57.6	0.5	6 408	17 012	165.5	0.1	11.7	-86 081	-128 722
484	VE Venezuela	2 206	67 738	2969.9	0.2	58 797	156 367	165.9	0.7	230.8	56 590	88 629
500	EC Ecuador	12 906	7 081	-45.1	0.0	5 087	4 107	-19.3	0.0	58.0	-7 818	-2 974
512	CL Chile	32 110	11 851	-63.1	0.0	42 480	46 082	8.5	0.2	388.8	10 370	34 231
4-ASIA		2 762 778	2 928 397	6.0	10.4	684 012	1 034 456	51.2	4.5	35.3	-2 078 766	-1 893 941
MIDDLE EAST		738 569	998 739	35.2	3.6	205 798	235 251	14.3	1.0	23.6	-532 771	-763 489
612	IQ Iraq	0	92 442	0.0	0.3	1 882	2 782	47.8	0.0	3.0	1 882	-89 660
616	IR Iran, Islamic Republic of	2 705	3 558	31.5	0.0	21 295	7 231	-66.0	0.0	203.3	18 590	3 673
624	IL Israel	51 062	58 408	14.4	0.2	41 647	52 144	25.2	0.2	89.3	-9 415	-6 263
632	SA Saudi Arabia	468 894	479 762	2.3	1.7	46 676	51 304	9.9	0.2	10.7	-422 218	-428 459
647	AE United Arab Emirates	59 718	8 599	-85.6	0.0	42 416	38 279	-9.8	0.2	445.2	-17 302	29 680
ASEAN		239 253	213 539	-10.7	0.8	62 717	66 003	5.2	0.3	30.9	-176 536	-147 536
680	TH Thailand	62 866	61 054	-2.9	0.2	7 913	9 785	23.6	0.0	16.0	-54 952	-51 269
700	ID Indonesia	52 311	26 481	-49.4	0.1	3 303	9 663	192.5	0.0	36.5	-49 008	-16 818
701	MY Malaysia	57 068	45 664	-20.0	0.2	6 604	13 025	97.2	0.1	28.5	-50 464	-32 639
706	SG Singapore	13 645	11 029	-19.2	0.0	37 145	26 140	-29.6	0.1	237.0	23 500	15 111
708	PH Philippines	8 321	7 754	-6.8	0.0	2 232	3 043	36.3	0.0	39.2	-6 089	-4 711
OTHERS		1 784 956	1 716 119	-3.9	6.1	415 497	733 202	76.5	3.2	42.7	-1 369 459	-982 917
626	TL Timor-Leste	585	89	-84.8	0.0	2 075	3 557	71.4	0.0	4004.6	1 491	3 469
662	PK Pakistan	52 224	33 401	-36.0	0.1	8 137	7 695	-5.4	0.0	23.0	-44 087	-25 706
664	IN India	294 903	166 694	-43.5	0.6	49 241	45 302	-8.0	0.2	27.2	-245 663	-121 392
720	CN China	715 349	692 407	-3.2	2.5	155 556	440 641	183.3	1.9	63.6	-559 793	-251 766
728	KR Korea, Republic of	117 046	85 678	-26.8	0.3	23 832	35 994	51.0	0.2	42.0	-93 214	-49 685
732	JP Japan	174 560	183 266	5.0	0.7	87 104	103 244	18.5	0.5	56.3	-87 457	-80 022
736	TW Taiwan	51 401	56 621	10.2	0.2	32 328	13 295	-58.9	0.1	23.5	-19 073	-43 326
740	HK Hong Kong	13 872	13 087	-5.7	0.0	45 788	66 056	44.3	0.3	504.7	31 916	52 969
743	MO Macao	195	190	-2.2	0.0	6 861	10 532	53.5	0.0	5536.1	6 666	10 341
5-AUSTR.,O.P. REG		24 370	19 309	-20.8	0.1	38 320	38 693	1.0	0.2	200.4	13 950	19 383
800	AU Australia	6 209	7 026	13.2	0.0	32 779	32 912	0.4	0.1	468.5	26 570	25 887
804	NZ New Zealand	17 737	10 965	-38.2	0.0	4 284	4 419	3.1	0.0	40.3	-13 453	-6 547
6-OTHERS		12 249	346	-97.2	0.0	273 727	354 522	29.5	1.6	102600.6	261 478	354 177
952	QS Stores and provisions (Extra EU)	0	0	0.0	0.0	231 388	311 083	34.4	1.4	0.0	231 388	311 083
960	QW Countries/territories not specif. (Extra EU)	12 249	346	-97.2	0.0	42 339	43 439	2.6	0.2	12571.5	30 090	43 093

Memo:

Intra EU-15	21 024 871	19 383 312	-7.8	69.1	15 224 741	15 706 415	3.2	68.7	81.0	-5 800 130	-3 676 897
Intra-enlargement	732 711	717 792	-2.0	2.6	631 268	738 245	16.9	3.2	102.8	-101 443	20 454
OECD (excl. EU)	1 727 262	1 367 135	-20.8	4.9	1 645 592	1 871 619	13.7	8.2	136.9	-81 670	504 484
OPEC	2 350 288	2 416 146	2.8	8.6	1 415 595	1 866 206	31.8	8.2	77.2	-934 693	-549 940
ACP ^[4]	1 514 943	1 792 305	18.3	6.4	1 514 765	1 962 827	29.6	8.6	109.5	-178	170 522
CPLP ^[5]	1 038 394	1 513 898	45.8	5.4	1 509 475	1 913 433	26.8	8.4	126.4	471 080	399 534
CIS ^[6]	899 764	1 221 953	35.8	4.4	84 173	107 203	27.4	0.5	8.8	-815 591	-1 114 750
Mashrak	57 176	93 391	63.3	0.3	65 076	85 253	31.0	0.4	91.3	7 900	-8 137
EUROMED	801 865	652 998	-18.6	2.3	737 169	841 026	14.1	3.7	128.8	-64 696	188 028
Latin American Count.	1 153 446	1 166 810	1.2	4.2	671 360	704 331	4.9	3.1	60.4	-482 085	-462 479
Cent. Amer. Common Market	40 893	33 796	-17.4	0.1	13 874	12 973	-6.5	0.1	38.4	-27 019	-20 823
Andean Community	126 410	233 783	84.9	0.8	79 677	192 463	141.6	0.8	82.3	-46 733	-41 320
ASEM (relac. Euro-Asia)	1 593 334	1 374 985	-13.7	4.9	386 592	698 912	80.8	3.1	50.8	-1 206 743	-676 073
EDA (Econ Dinam Asian)	315 898	273 133	-13.5	1.0	153 610	164 294	7.0	0.7	60.2	-162 287	-108 839
China+H. Kong+Macao	729 416	705 685	-3.3	2.5	208 205	517 229	148.4	2.3	73.3	-521 210	-188 456

Source: GEE, based on data on International Trade statistics from Statistics Portugal (most up-to-date versions available). Estimates for operators under the assimilation threshold and non-responses are included in Intra-EU trade.

Notes:

[1]Sum of Imports from EU and Imports from third countries.

[2]Sum of Exports to EU and Exports to third countries.

[3]African Countries of Portuguese Official Language

[4]African, Caribbean and Pacific Group of States

[5]Community of Portuguese Language Countries

[6]Commonwealth of Independent States

**Table 17 - International Trade of Portuguese goods
by geographical and economic areas (Intra + Extra-EU)
Imports [1] - Contributions of the main partners to the global growth rate**

Period of assessment: january to june

Countries and regions	1000 Euros				Structure (%)		Growth rates and contributions to growth			
	2011		jan-jun		jan-jun		Last 12 months ^[2]		jan-jun	
	Rank.	2011	2011	2012	2011	2012	y.o.y., % ^[3]	Contrib. p.p. ^[4]	y.o.y., %	Contrib. p.p. ^[4]
WORLD	57 729 732		29 619 556	28 033 116	100.00	100.00	-4.34	-4.34	-5.36	-5.36
INTRA EU(27)	42 149 115		21 757 582	20 101 104	73.46	71.70	-7.83	-5.86	-7.61	-5.59
011 ES Spain	18 254 083	1	9 251 478	8 899 384	31.23	31.75	-3.84	-1.22	-3.81	-1.19
004 DE Germany	7 118 044	2	3 737 689	3 251 357	12.62	11.60	-15.56	-2.08	-13.01	-1.64
001 FR France	3 980 059	3	2 105 337	1 846 216	7.11	6.59	-9.83	-0.69	-12.31	-0.87
005 IT Italy	3 093 512	4	1 622 282	1 471 302	5.48	5.25	-7.92	-0.43	-9.31	-0.51
003 NL Netherlands	2 753 037	5	1 433 803	1 329 562	4.84	4.74	-8.62	-0.43	-7.27	-0.35
006 GB United Kingdom	1 923 966	6	971 344	885 688	3.28	3.16	-10.37	-0.36	-8.82	-0.29
017 BE Belgium	1 511 849	8	816 717	696 853	2.76	2.49	-15.08	-0.42	-14.68	-0.40
030 SE Sweden	603 536	16	331 952	305 265	1.12	1.09	-5.57	-0.06	-8.04	-0.09
007 IE Ireland	598 583	17	277 006	271 669	0.94	0.97	3.73	0.04	-1.93	-0.02
060 PL Poland	388 660	21	194 800	203 402	0.66	0.73	6.81	0.04	4.42	0.03
061 CZ Czech Republic	347 121	23	188 978	169 317	0.64	0.60	-13.03	-0.08	-10.40	-0.07
008 DK Denmark	300 350	25	163 935	127 079	0.55	0.45	-17.81	-0.10	-22.48	-0.12
038 AT Austria	285 560	27	137 373	141 515	0.46	0.50	1.27	0.01	3.02	0.01
064 HU Hungary	228 525	31	115 413	130 618	0.39	0.47	0.74	0.00	13.17	0.05
032 FI Finland	134 228	37	76 683	67 134	0.26	0.24	-20.79	-0.06	-12.45	-0.03
009 GR Greece	123 949	38	66 682	60 595	0.23	0.22	-4.40	-0.01	-9.13	-0.02
066 RO Romania	119 466	39	53 008	42 674	0.18	0.15	-16.19	-0.04	-19.50	-0.03
063 SK Slovakia	114 104	40	64 341	59 655	0.22	0.21	-8.06	-0.02	-7.28	-0.02
068 BG Bulgaria	78 679	54	39 147	44 876	0.13	0.16	51.22	0.05	14.64	0.02
018 LU Luxembourg	60 909	57	32 509	29 646	0.11	0.11	2.21	0.00	-8.81	-0.01
055 LT Lithuania	56 141	58	39 562	27 193	0.13	0.10	-14.80	-0.01	-31.26	-0.04
091 SI Slovenia	38 177	63	20 519	20 146	0.07	0.07	-4.31	0.00	-1.82	0.00
046 MT Malta	19 277	75	11 105	9 754	0.04	0.03	-22.51	-0.01	-12.17	0.00
053 EE Estonia	10 107	90	3 974	6 187	0.01	0.02	24.17	0.00	55.68	0.01
600 CY Cyprus	4 258	110	980	1 015	0.00	0.00	142.49	0.00	3.58	0.00
054 LV Latvia	2 778	120	883	2 954	0.00	0.01	50.63	0.00	234.46	0.01
OTHERS	155		81	49	0.00	0.00	- 21.8	0.00	- 39.5	0.00
EXTRA EU(27)	15 580 617		7 861 974	7 932 012	26.54	28.30	6.04	1.52	0.89	0.24
of which:										
1-EUROPE	1 691 266		1 020 929	844 814	3.45	3.01	-14.52	-0.44	-17.25	-0.59
EFTA	802 175		491 694	273 752	1.66	0.98	-31.73	-0.46	-44.32	-0.74
028 NO Norway	417 264	20	300 376	89 252	1.01	0.32	-55.86	-0.44	-70.29	-0.71
039 CH Switzerland	365 170	22	179 702	171 465	0.61	0.61	-4.37	-0.03	-4.58	-0.03
024 IS Iceland	19 147	76	11 213	12 849	0.04	0.05	40.08	0.01	14.60	0.01
OTHERS	889 091		529 235	571 061	1.79	2.04	1.55	0.02	7.90	0.14
075 RU Russian Federation	562 810	18	357 331	291 715	1.21	1.04	-1.98	-0.02	-18.36	-0.22
072 UA Ukraine	164 273	33	83 029	164 789	0.28	0.59	64.01	0.16	98.47	0.28
052 TR Turkey	102 951	43	58 095	68 539	0.20	0.24	-47.00	-0.17	17.98	0.04
096 MK Former Yugoslav Republic of Macedonia	22 135	72	11 837	6 711	0.04	0.02	-16.05	-0.01	-43.31	-0.02
2-AFRICA	4 361 255		2 177 758	2 393 007	7.35	8.54	12.88	0.89	9.88	0.73
MAGHREB	941 433		635 532	432 661	2.15	1.54	-15.00	-0.22	-31.92	-0.68
208 DZ Algeria	776 204	15	538 734	308 432	1.82	1.10	-16.84	-0.19	-42.75	-0.78
204 MA Morocco	139 215	35	79 244	66 391	0.27	0.24	-8.50	-0.02	-16.22	-0.04
212 TN Tunisia	26 014	69	17 554	57 838	0.06	0.21	-10.82	-0.01	229.49	0.14
ACPOL ^[5]	1 229 970		365 349	866 185	1.23	3.09	174.32	1.87	137.08	1.69
330 AO Angola	1 177 486	11	353 459	855 058	1.19	3.05	184.04	1.85	141.91	1.69
366 MZ Mozambique	41 983	62	6 217	6 704	0.02	0.02	40.99	0.02	7.83	0.00
247 CV Cape Verde	9 971	92	5 331	4 247	0.02	0.02	-1.98	0.00	-20.32	0.00
311 ST Sao Tome and Principe	270	145	179	157	0.00	0.00	-12.39	0.00	-12.28	0.00
257 GW Guinea-Bissau	261	146	164	19	0.00	0.00	-64.69	0.00	-88.45	0.00
OTHERS	2 189 852		1 176 877	1 094 160	3.97	3.90	-17.51	-0.76	-7.03	-0.28
288 NG Nigeria	1 528 659	7	858 391	413 983	2.90	1.48	-25.14	-0.62	-51.77	-1.50
310 GQ Equatorial Guinea	138 977	36	83 987	260 829	0.28	0.93	107.32	0.28	210.56	0.60
388 ZA South Africa	97 672	44	44 929	29 504	0.15	0.11	-35.41	-0.08	-34.33	-0.05
220 EG Egypt	88 088	49	52 188	87 573	0.18	0.31	33.58	0.05	67.80	0.12
302 CM Cameroon	86 264	52	13 083	77 361	0.04	0.28	115.52	0.14	491.31	0.22
3-AMERICA	3 824 986		1 863 889	1 746 139	6.29	6.23	9.48	0.55	-6.32	-0.40
NAFTA	1 548 658		779 153	667 837	2.63	2.38	3.08	0.07	-14.29	-0.38
400 US United States	1 098 283	12	555 257	496 808	1.87	1.77	4.77	0.08	-10.53	-0.20
412 MX Mexico	230 866	30	103 609	115 165	0.35	0.41	22.64	0.08	11.15	0.04
404 CA Canada	219 509	32	120 286	55 864	0.41	0.20	-24.06	-0.08	-53.56	-0.22

(continues)

Period of assessment: january to june

Countries and regions	1000 Euros			Structure (%)		Growth rates and contributions to growth				
	2011	jan-jun		jan-jun		Last 12 months ^[2]		jan-jun		
		Rank.	2011	2012	2011	2012	y.o.y., % ^[3]	Contrib. p.p. ^[4]	y.o.y., %	Contrib. p.p. ^[4]
MERCOSUL	1 769 133	846 709	757 252	2.86	2.70	14.31	0.36	-10.57	-0.30	
508 BR Brazil	1 462 081	10	672 460	647 624	2.27	2.31	23.30	0.46	-3.69	-0.08
528 AR Argentina	153 573	34	103 986	57 860	0.35	0.21	-31.38	-0.08	-44.36	-0.16
OTHERS	507 195	238 028	321 051	0.80	1.15	13.00	0.12	34.88	0.28	
480 CO Colombia	246 605	29	92 489	145 734	0.31	0.52	109.63	0.27	57.57	0.18
436 CR Costa Rica	54 151	59	30 881	19 413	0.10	0.07	-18.89	-0.02	-37.14	-0.04
512 CL Chile	51 257	60	32 110	11 851	0.11	0.04	-51.36	-0.06	-63.09	-0.07
488 GY Guyana	32 402	64	15 531	496	0.05	0.00	-49.89	-0.03	-96.80	-0.05
504 PE Peru	28 970	65	17 637	12 782	0.06	0.05	-24.85	-0.01	-27.53	-0.02
500 EC Ecuador	22 108	73	12 906	7 081	0.04	0.03	-24.32	-0.01	-45.13	-0.02
4-ÁSIA	5 648 520	2 762 778	2 928 397	9.33	10.45	5.97	0.56	5.99	0.56	
MIDDLE EAST	1 499 781	738 569	998 739	2.49	3.56	26.24	0.62	35.23	0.88	
632 SA Saudi Arabia	914 297	13	468 894	479 762	1.58	1.71	30.13	0.37	2.32	0.04
078 AZ Azerbaijan	290 057	26	103 575	288 373	0.35	1.03	33.65	0.20	178.42	0.62
624 IL Israel	93 796	47	51 062	58 408	0.17	0.21	6.47	0.01	14.39	0.02
644 QA Qatar	88 126	48	37 779	56 619	0.13	0.20	109.21	0.10	49.87	0.06
647 AE United Arab Emirates	68 694	55	59 718	8 599	0.20	0.03	-74.99	-0.09	-85.60	-0.17
640 BH Bahrain	15 394	81	102	13	0.00	0.00	-32.35	-0.01	-87.16	0.00
649 OM Oman	9 159	95	6 714	808	0.02	0.00	-74.62	-0.02	-87.96	-0.02
ASEAN	454 716	239 253	213 539	0.81	0.76	-2.12	-0.02	-10.75	-0.09	
680 TH Thailand	112 481	41	62 866	61 054	0.21	0.22	-8.95	-0.02	-2.88	-0.01
701 MY Malaysia	112 032	42	57 068	45 664	0.19	0.16	-7.33	-0.01	-19.98	-0.04
690 VN Viet-Nam	96 943	45	42 056	58 825	0.14	0.21	43.18	0.06	39.87	0.06
700 ID Indonesia	87 026	50	52 311	26 481	0.18	0.09	-21.52	-0.03	-49.38	-0.09
706 SG Singapore	23 389	70	13 645	11 029	0.05	0.04	-32.01	-0.02	-19.18	-0.01
OTHERS	3 694 023	1 784 956	1 716 119	6.03	6.12	-0.80	-0.05	-3.86	-0.23	
720 CN China	1 499 188	9	715 349	692 407	2.42	2.47	-5.42	-0.14	-3.21	-0.08
079 KZ Kazakhstan	853 958	14	340 481	459 203	1.15	1.64	39.19	0.47	34.87	0.40
664 IN India	467 326	19	294 903	166 694	1.00	0.59	-30.54	-0.25	-43.48	-0.43
732 JP Japan	340 635	24	174 560	183 266	0.59	0.65	-3.17	-0.02	4.99	0.03
728 KR Korea, Republic of	278 178	28	117 046	85 678	0.40	0.31	2.26	0.01	-26.80	-0.11
736 TW Taiwan	96 635	46	51 401	56 621	0.17	0.20	-17.90	-0.04	10.16	0.02
662 PK Pakistan	81 451	53	52 224	33 401	0.18	0.12	-32.10	-0.05	-36.04	-0.06
666 BD Bangladesh	27 638	66	11 616	13 095	0.04	0.05	5.53	0.00	12.74	0.00
740 HK Hong Kong	27 493	67	13 872	13 087	0.05	0.05	-16.92	-0.01	-5.66	0.00
081 UZ Uzbekistan	9 867	93	6 662	4 504	0.02	0.02	-52.52	-0.01	-32.40	-0.01
5-AUSTR,OC,P. REG	42 005	24 370	19 309	0.08	0.07	-1.83	0.00	-20.77	-0.02	
804 NZ New Zealand	26 714	68	17 737	10 965	0.06	0.04	-21.67	-0.01	-38.18	-0.02
800 AU Australia	14 591	83	6 209	7 026	0.02	0.03	34.03	0.01	13.15	0.00
801 PG Papua New Guinea	509	140	336	1 292	0.00	0.00	172.65	0.00	284.91	0.00
6-OTHERS	12 586	12 249	346	0.04	0.00	-96.99	-0.04	-97.18	-0.04	
960 QW Countries/territories not specif. (Extra EU)	12 586		12 249	346	0.04	0.00	-96.99	-0.04	-97.18	-0.04
952 QS Stores and provisions (Extra EU)	0		0	0	0.00	0.00	0.00	0.00	0.00	0.00

Memo:

Intra EU-15	40 741 819	21 024 871	19 383 312	70.98	69.14	-8.02	-5.81	-7.81	-5.54
Intra-enlargement	1 407 295	732 711	717 792	2.47	2.56	-2.25	-0.05	-2.04	-0.05
OECD (excl. EU)	3 258 360	1 727 262	1 367 135	5.83	4.88	-11.13	-0.62	-20.85	-1.22
OPEC	4 611 027	2 350 288	2 416 146	7.93	8.62	12.58	0.89	2.80	0.22
ACP ^[6]	3 382 557	1 514 943	1 792 305	5.11	6.39	33.29	1.56	18.31	0.94
CPLP ^[7]	2 693 077	1 038 394	1 513 898	3.51	5.40	76.25	2.34	45.79	1.61
CIS ^[8]	1 898 015	899 764	1 221 953	3.04	4.36	27.65	0.82	35.81	1.09
Mashrak	98 267	57 176	93 391	0.19	0.33	32.61	0.06	63.34	0.12
EUROMED	1 236 447	801 865	652 998	2.71	2.33	-14.98	-0.33	-18.57	-0.50
Latin American Count.	2 450 297	1 153 446	1 166 810	3.89	4.16	17.56	0.63	1.16	0.05
Cent. Amer. Common Market	78 206	40 893	33 796	0.14	0.12	4.26	0.00	-17.36	-0.02
Andean Community	313 159	126 410	233 783	0.43	0.83	49.41	0.24	84.94	0.36
ASEM (relac. Euro-Asia)	3 121 494	1 593 334	1 374 985	5.38	4.90	-8.76	-0.47	-13.70	-0.74
EDA (Econ Dinam Asian)	650 209	315 898	273 133	1.07	0.97	-7.72	-0.09	-13.54	-0.14
China+H. Kong+Macau	1 526 912	729 416	705 685	2.46	2.52	-5.67	-0.15	-3.25	-0.08

Source: GEE, based on data on International Trade statistics from Statistics Portugal (most up-to-date versions available). Estimates for operators under the assimilation threshold and non-responses are included in Intra-EU trade.

Notes:

[1] Sum of Imports from EU and Imports from third countries.

[2] 12 months ending in june 2012

[3] (jul 11-jun 12)/(jul 10-jun 11) x 100 - 100

[4] Contributions to growth, shift share analysis: (rate of change) x (weight in the previous period) ÷ 100.

[5] African Countries of Portuguese Official Language

[6] African, Caribbean and Pacific Group of States

[7] Community of Portuguese Language Countries

[8] Commonwealth of Independent States

**Table 18 - International Trade of Portuguese goods
by geographical and economic areas (Intra + Extra-EU)
Exports ^[1] - Contributions of the main partners to the global growth rate**

Period of assessment: January to June										
Countries and regions	1000 Euros				Structure (%)		Growth rates and contributions to growth			
	2011	Rank.	jan-jun		jan-jun		Last 12 months ^[2]		jan-jun	
			2011	2012	2011	2012	y.o.y., % ^[3]	Contrib. p.p. ^[4]	y.o.y., %	Contrib. p.p. ^[4]
WORLD	42 325 641		20 943 344	22 846 345	100.00	100.00	10.85	10.85	9.09	9.09
INTRA EU(27)	31 343 842		15 856 009	16 444 660	75.71	71.98	6.54	4.91	3.71	2.81
011 ES Spain	10 529 970	1	5 391 408	5 169 324	25.74	22.63	-0.07	-0.02	-4.12	-1.06
004 DE Germany	5 702 602	2	2 884 956	2 961 816	13.78	12.96	7.35	0.99	2.66	0.37
001 FR France	5 101 777	3	2 656 726	2 766 275	12.69	12.11	7.67	0.93	4.12	0.52
006 GB United Kingdom	2 155 081	5	1 054 413	1 182 727	5.03	5.18	9.15	0.48	12.17	0.61
003 NL Netherlands	1 665 532	6	845 090	903 522	4.04	3.95	10.31	0.40	6.91	0.28
005 IT Italy	1 550 234	7	829 669	833 777	3.96	3.65	-0.70	-0.03	0.50	0.02
017 BE Belgium	1 334 824	9	605 804	728 274	2.89	3.19	30.27	0.85	20.22	0.58
030 SE Sweden	434 920	12	232 999	235 777	1.11	1.03	-1.36	-0.02	1.19	0.01
060 PL Poland	403 921	13	190 507	207 332	0.91	0.91	20.86	0.18	8.83	0.08
061 CZ Czech Republic	277 926	19	138 737	168 772	0.66	0.74	18.22	0.12	21.65	0.14
008 DK Denmark	266 155	20	128 042	149 311	0.61	0.65	12.19	0.08	16.61	0.10
032 FI Finland	244 804	23	111 896	130 964	0.53	0.57	2.42	0.02	17.04	0.09
066 RO Romania	233 542	24	111 691	128 454	0.53	0.56	15.02	0.08	15.01	0.08
038 AT Austria	230 868	25	111 902	130 747	0.53	0.57	12.13	0.07	16.84	0.09
009 GR Greece	131 913	32	54 670	141 434	0.26	0.62	95.45	0.27	158.70	0.41
007 IE Ireland	122 947	33	61 750	69 686	0.29	0.31	6.80	0.02	12.85	0.04
064 HU Hungary	120 825	34	63 616	86 104	0.30	0.38	20.04	0.06	35.35	0.11
063 SK Slovakia	84 677	41	44 706	43 782	0.21	0.19	-1.48	0.00	-2.07	0.00
018 LU Luxembourg	58 226	50	28 866	31 501	0.14	0.14	4.32	0.01	9.13	0.01
068 BG Bulgaria	52 674	52	23 568	34 242	0.11	0.15	23.88	0.03	45.29	0.05
600 CY Cyprus	34 115	59	19 194	11 959	0.09	0.05	-33.52	-0.03	-37.69	-0.03
091 SI Slovenia	24 494	63	11 149	19 875	0.05	0.09	41.45	0.02	78.27	0.04
046 MT Malta	24 015	64	7 017	5 717	0.03	0.03	44.05	0.02	-18.52	-0.01
055 LT Lithuania	22 268	66	11 254	11 205	0.05	0.05	0.49	0.00	-0.43	0.00
053 EE Estonia	14 583	77	6 477	13 225	0.03	0.06	39.07	0.02	104.17	0.03
054 LV Latvia	11 381	87	3 352	7 579	0.02	0.03	70.13	0.02	126.12	0.02
OTHERS	509 569		226 549	271 281	1.08	1.19	34.00	0.35	19.74	0.21
EXTRA EU(27)	10 981 799		5 087 335	6 401 685	24.29	28.02	23.89	5.94	25.84	6.28
of which:										
1-EUROPE	1 226 229		590 207	716 738	2.82	3.14	22.76	0.63	21.44	0.60
EFTA	467 032		233 426	269 441	1.11	1.18	14.25	0.16	15.43	0.17
039 CH Switzerland	372 235	16	186 246	208 559	0.89	0.91	12.05	0.11	11.98	0.11
028 NO Norway	90 146	38	45 222	57 755	0.22	0.25	21.71	0.05	27.71	0.06
OTHERS	759 196		356 781	447 297	1.70	1.96	28.42	0.47	25.37	0.43
052 TR Turkey	301 019	18	153 545	193 718	0.73	0.85	22.45	0.16	26.16	0.19
044 GI Gibraltar	253 795	22	103 832	132 401	0.50	0.58	52.46	0.24	27.51	0.14
075 RU Russian Federation	139 853	31	66 113	86 535	0.32	0.38	25.95	0.08	30.89	0.10
072 UA Ukraine	19 094	67	8 050	10 027	0.04	0.04	-2.25	0.00	24.56	0.01
092 HR Croatia	15 373	74	8 588	10 654	0.04	0.05	22.20	0.01	24.06	0.01
2-AFRICA	4 363 262		2 015 881	2 515 816	9.63	11.01	24.28	2.38	24.80	2.39
MAGHREB	889 663		476 901	509 911	2.28	2.23	12.57	0.26	6.92	0.16
204 MA Morocco	387 476	15	191 652	263 281	0.92	1.15	35.01	0.30	37.37	0.34
208 DZ Algeria	358 603	17	211 915	183 337	1.01	0.80	-0.03	0.00	-13.49	-0.14
212 TN Tunisia	143 584	30	73 334	63 293	0.35	0.28	-10.63	-0.04	-13.69	-0.05
ACPOL ^[5]	2 919 571		1 243 457	1 622 250	5.94	7.10	29.23	1.87	30.46	1.81
330 AO Angola	2 335 457	4	957 601	1 311 887	4.57	5.74	34.23	1.72	37.00	1.69
247 CV Cape Verde	255 151	21	131 077	109 535	0.63	0.48	-10.49	-0.07	-16.43	-0.10
366 MZ Mozambique	217 873	26	103 602	138 879	0.49	0.61	34.64	0.16	34.05	0.17
257 GW Guinea-Bissau	64 368	48	30 057	39 142	0.14	0.17	32.39	0.05	30.22	0.04
311 ST Sao Tome and Principe	46 723	53	21 119	22 806	0.10	0.10	9.65	0.01	7.99	0.01
OTHERS	554 027		295 524	383 655	1.41	1.68	18.67	0.25	29.82	0.42
388 ZA South Africa	86 089	40	39 468	47 166	0.19	0.21	14.64	0.03	19.50	0.04
288 NG Nigeria	76 112	44	51 959	72 398	0.25	0.32	46.20	0.08	39.34	0.10
220 EG Egypt	71 394	47	31 350	52 511	0.15	0.23	41.75	0.07	67.50	0.10
310 GQ Equatorial Guinea	41 111	55	20 771	19 172	0.10	0.08	10.72	0.01	-7.70	-0.01
3-AMERICA	3 172 258		1 485 187	1 741 460	7.09	7.62	16.16	1.20	17.26	1.22
NAFTA	2 166 219		1 026 663	1 133 909	4.90	4.96	13.00	0.66	10.45	0.51
400 US United States	1 498 627	8	717 726	934 518	3.43	4.09	23.79	0.83	30.21	1.04
412 MX Mexico	462 402	11	216 837	102 274	1.04	0.45	-21.83	-0.24	-52.83	-0.55
404 CA Canada	205 190	27	92 100	97 117	0.44	0.43	16.01	0.07	5.45	0.02

(continues)

Period of assessment: january to june

Countries and regions	1000 Euros			Structure (%)		Growth rates and contributions to growth			
	2011	jan-jun		jan-jun		Last 12 months ^[2]		jan-jun	
		Rank.	2011	2012	2011	2012	y.o.y., % ^[3]	Contrib. p.p. ^[4]	y.o.y., %
MERCOSUL	651 494	300 135	327 238	1.43	1.43	17.54	0.25	9.03	0.13
508 BR Brazil	585 268	263 943	287 626	1.26	1.26	18.53	0.24	8.97	0.11
528 AR Argentina	45 328	23 906	24 431	0.11	0.11	1.10	0.00	2.19	0.00
OTHERS	354 545	158 389	280 313	0.76	1.23	31.52	0.29	76.98	0.58
484 VE Venezuela	152 827	58 797	156 367	0.28	0.68	63.60	0.24	165.95	0.47
512 CL Chile	80 221	42 480	46 082	0.20	0.20	-8.84	-0.02	8.48	0.02
448 CU Cuba	22 320	13 987	15 410	0.07	0.07	-3.90	0.00	10.18	0.01
4-ASIA	1 509 134	684 012	1 034 456	3.27	4.53	42.40	1.39	51.23	1.67
MIDDLE EAST	414 253	205 798	235 251	0.98	1.03	8.56	0.09	14.31	0.14
632 SA Saudi Arabia	93 659	46 676	51 304	0.22	0.22	21.35	0.04	9.91	0.02
647 AE United Arab Emirates	90 330	42 416	38 279	0.20	0.17	7.63	0.02	-9.75	-0.02
624 IL Israel	74 535	41 647	52 144	0.20	0.23	7.53	0.01	25.20	0.05
616 IR Iran, Islamic Republic of	35 104	21 295	7 231	0.10	0.03	-49.19	-0.05	-66.04	-0.07
604 LB Lebanon	27 784	14 546	13 637	0.07	0.06	-3.02	0.00	-6.25	0.00
ASEAN	139 012	62 717	66 003	0.30	0.29	20.94	0.06	5.24	0.02
706 SG Singapore	81 286	37 145	26 140	0.18	0.11	7.33	0.01	-29.63	-0.05
680 TH Thailand	16 041	7 913	9 785	0.04	0.04	23.70	0.01	23.65	0.01
701 MY Malaysia	12 267	6 604	13 025	0.03	0.06	60.62	0.02	97.22	0.03
690 VN Viet-Nam	12 007	5 321	3 810	0.03	0.02	-13.76	0.00	-28.39	-0.01
OTHERS	955 869	415 497	733 202	1.98	3.21	63.38	1.24	76.46	1.52
720 CN China	399 012	155 556	440 641	0.74	1.93	144.49	1.01	183.27	1.36
732 JP Japan	191 733	87 104	103 244	0.42	0.45	27.66	0.11	18.53	0.08
740 HK Hong Kong	111 736	45 788	66 056	0.22	0.29	27.36	0.07	44.26	0.10
664 IN India	89 966	49 241	45 302	0.24	0.20	-2.38	-0.01	-8.00	-0.02
736 TW Taiwan	61 869	32 328	13 295	0.15	0.06	-12.68	-0.02	-58.87	-0.09
728 KR Korea, Republic of	53 901	23 832	35 994	0.11	0.16	41.14	0.05	51.03	0.06
662 PK Pakistan	15 624	8 137	7 695	0.04	0.03	-1.76	0.00	-5.43	0.00
5-AUSTR,OC,P. REG	84 042	38 320	38 693	0.18	0.17	1.13	0.00	0.97	0.00
800 AU Australia	72 160	32 779	32 912	0.16	0.14	-0.27	0.00	0.41	0.00
804 NZ New Zealand	9 015	4 284	4 419	0.02	0.02	6.60	0.00	3.15	0.00
6-DIVERSOS	626 874	273 727	354 522	1.31	1.55	24.30	0.35	29.52	0.39
952 QS Stores and provisions (Extra EU)	524 066	231 388	311 083	1.10	1.36	26.51	0.32	34.44	0.38
960 QW Countries/territories not specif. (Extra EU)	102 808	42 339	43 439	0.20	0.19	12.88	0.03	2.60	0.01

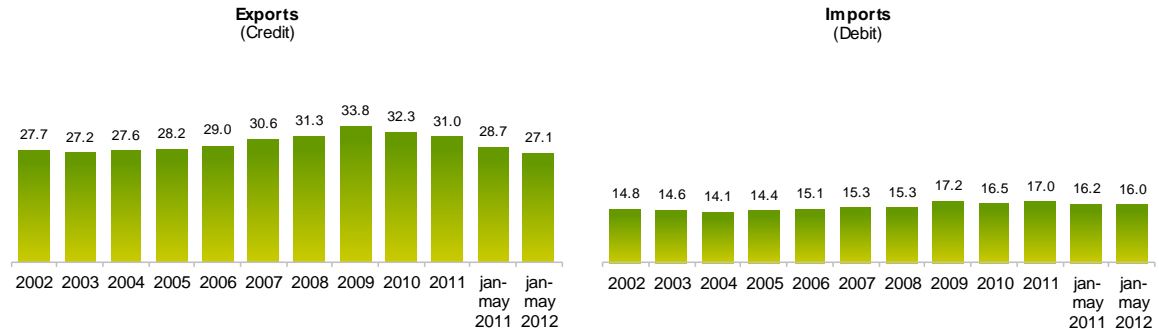
Memo:

Intra EU-15	30 039 421	15 224 741	15 706 415	72.69	68.75	6.11	4.40	3.16	2.30
Intra-enlargement	1 304 421	631 268	738 245	3.01	3.23	16.83	0.51	16.95	0.51
OECD (excl. EU)	3 415 162	1 645 592	1 871 619	7.86	8.19	14.06	1.12	13.74	1.08
OPEC	3 197 022	1 415 595	1 866 206	6.76	8.17	28.59	2.03	31.83	2.15
ACP ^[6]	3 422 783	1 514 765	1 962 827	7.23	8.59	27.63	2.10	29.58	2.14
CPLP ^[7]	3 509 751	1 509 475	1 913 433	7.21	8.38	27.38	2.11	26.76	1.93
CIS ^[8]	180 362	84 173	107 203	0.40	0.47	20.56	0.09	27.36	0.11
Mashrak	141 385	65 076	85 253	0.31	0.37	15.66	0.05	31.01	0.10
EUROMED	1 406 602	737 169	841 026	3.52	3.68	14.69	0.48	14.09	0.50
Latin American Count.	1 453 902	671 360	704 331	3.21	3.08	8.11	0.28	4.91	0.16
Cent. Amer. Common Market	28 798	13 874	12 973	0.07	0.06	-0.30	0.00	-6.49	0.00
Andean Community	199 809	79 677	192 463	0.38	0.84	57.99	0.29	141.55	0.54
ASEM (relac. Euro-Asia)	889 273	386 592	698 912	1.85	3.06	69.07	1.23	80.79	1.49
EDA (Econ Dinam Asian)	337 100	153 610	164 294	0.73	0.72	19.47	0.14	6.96	0.05
China+H. Kong+Macau	525 964	208 205	517 229	0.99	2.26	110.18	1.10	148.42	1.48

Source: GEE, based on data on International Trade statistics from Statistics Portugal (most up-to-date versions available). Estimates for operators under the assimilation threshold and non-responses are included in Intra-EU trade.

Notes:

- [1] Sum of Exports to EU and Exports to third countries.
- [2] 12 months ending in june 2012
- [3] $(\text{jul } 11\text{-jun } 12) / (\text{jul } 10\text{-jun } 11) \times 100 - 100$
- [4] Contributions to growth, shift share analysis: $(\text{rate of change}) \times (\text{weight in the previous period}) \div 100$.
- [5] African Countries of Portuguese Official Language
- [6] African, Caribbean and Pacific Group of States
- [7] Community of Portuguese Language Countries
- [8] Commonwealth of Independent States

Chart 5 – Share of Services in total Trade


Source: GEE, based on data from the Balance of Payments Statistics of the Bank of Portugal.

Notes:

The Exports from the Balance of Payments (Credit) corresponds to the Exports in International Trade Statistics (sum of Exports of goods to the EU with the Exports to Third Countries).

The Imports from the Balance of Payments (Debit) corresponds to the Imports in International Trade Statistics (sum of the Imports of goods from the EU with the Imports from Third Countries).

Table 19 - Trade of Goods and Services as a percentage of GDP

	2008	2009	2010	2011	2009				2010				2011				2012
					Q1	Q2	Q3	Q4	Q1	Q2	Q3	Q4	Q1	Q2	Q3	Q4	
Current Values as a percentage of GDP																	
Exports (Fob)	32.4	28.0	31.0	35.5	26.8	27.4	28.9	29.0	29.0	30.7	32.1	32.3	33.4	35.4	36.7	36.6	37.4
- Goods	23.8	20.0	22.5	26.2	18.7	19.4	21.0	20.9	20.9	22.2	23.5	23.6	24.5	26.0	27.1	27.2	27.8
- Services	8.6	8.0	8.5	9.3	8.1	8.0	7.9	8.1	8.1	8.5	8.6	8.7	8.9	9.4	9.6	9.4	9.6
Imports (Fob)	42.5	35.4	38.2	39.4	34.3	34.2	36.9	36.4	35.9	38.9	38.1	39.8	39.0	40.3	40.5	37.8	38.9
- Goods	36.8	30.0	32.5	33.4	28.9	28.6	31.5	31.0	30.5	33.2	32.4	34.1	33.4	34.1	34.3	31.6	33.0
- Services	5.7	5.4	5.6	6.1	5.4	5.6	5.4	5.4	5.4	5.7	5.7	5.7	5.6	6.3	6.2	6.1	5.9
Annual real growth rate																	
Exports (Fob)	-0.1	-10.9	8.8	7.6	-18.7	-14.6	-9.0	-0.4	9.5	9.6	8.4	7.8	8.4	8.8	6.7	6.6	7.9
- Goods	-0.6	-12.4	9.7	7.9	-22.1	-17.1	-9.2	0.4	12.8	10.8	7.7	8.1	8.3	9.0	6.6	7.7	9.7
- Services	1.4	-6.6	6.3	6.8	-8.6	-7.2	-8.2	-2.3	1.5	6.3	10.6	6.9	8.9	8.3	7.0	3.4	3.0
Imports (Fob)	2.3	-10.0	5.4	-5.3	-15.6	-13.9	-7.8	-2.4	6.8	9.8	1.3	4.1	-1.1	-4.3	-2.8	-12.8	-4.0
- Goods	2.1	-10.6	5.7	-6.7	-17.2	-15.4	-7.8	-1.4	7.9	11.2	0.5	3.9	-1.3	-6.4	-3.7	-14.8	-4.8
- Services	3.8	-6.3	3.6	3.1	-4.7	-4.8	-7.8	-7.9	0.7	1.9	6.5	5.5	0.6	8.4	3.0	0.2	0.4

Source: GEE, based on data from the Quarterly National Accounts (base 2006) of Statistics Portugal. Includes Intra and Extracommunity trade.

Table 20 - Goods and Services (Credit) - Services components

values in Millions of Euros

CREDIT (Exports)	january to may		Structure (%)				Growth rates and contributions to growth			
			Annual		jan-may		Last 12 months ^[1]		jan-may	
	2011	2012	2006	2011	2011	2012	y.o.y., % ^[2]	contrib. p.p. ^[3]	y.o.y., %	contrib. p.p. ^[3]
Goods and Services	24 432	26 033	100.0	100.0	100.0	100.0	9.5	9.5	6.6	6.6
Goods	17 429	18 986	71.0	69.0	71.3	72.9	11.4	7.8	8.9	6.4
Services	7 003	7 047	29.0	31.0	28.7	27.1	5.2	1.6	0.6	0.2
Transportation	2 065	2 196	7.1	8.4	8.5	8.4	7.0	0.6	6.3	0.5
Travel	2 585	2 734	13.2	13.2	10.6	10.5	6.3	0.9	5.8	0.6
Communications services	215	217	0.9	0.8	0.9	0.8	-0.6	0.0	1.0	0.0
Construction services	235	196	0.8	0.9	1.0	0.8	-4.4	0.0	-16.5	-0.2
Insurance services	50	47	0.2	0.2	0.2	0.2	-1.0	0.0	-4.8	0.0
Financial services	98	102	0.4	0.4	0.4	0.4	15.6	0.1	4.3	0.0
Computer and information services	145	196	0.3	0.6	0.6	0.8	37.2	0.2	35.6	0.2
Royalties and license fees	16	18	0.1	0.1	0.1	0.1	43.8	0.0	17.4	0.0
Other business services	1 407	1 129	5.2	5.8	5.8	4.3	-0.8	0.0	-19.7	-1.1
Personal, cult., and recreat. Serv.	103	111	0.4	0.4	0.4	0.4	-6.1	0.0	8.6	0.0
Government services	86	100	0.3	0.3	0.4	0.4	6.3	0.0	16.6	0.1

Source: GEE, based on data from the Balance of Payments Statistics of Banco de Portugal.

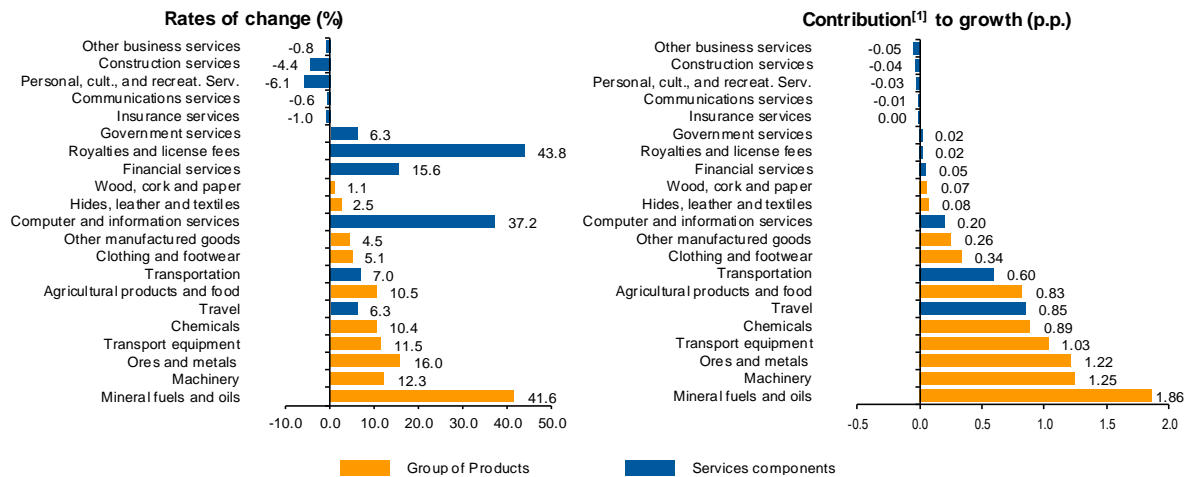
Notes:

[1] 12 months ending in may 2012

[2] (jun 11-may 12)/(jun 10-may 11) x 100 - 100

[3] Contributions to growth, shift share analysis: (rate of change) x (weight in the previous period) ÷ 100. Measures the proportion of growth of Imports attributable to each category specified.

Chart 6 - Growth rates of exports of goods and services and contribution to growth
Previous 12 months ending in may 2012



Source: GEE, based on data from the Bank de Portugal for Exports of goods and services, and Statistics Portugal, for the structure of exports of goods. The distribution of the contribution of growth of exports of goods (data from the Balance of Payments, Bank of Portugal) by group of products follows the structure implicit in the database of International Trade Statistics Portugal for analogous Goods (sum of Exports of goods to the EU with the Exports to Third Countries).

Notes:

The Exports from the Balance of Payments (Credit) corresponds to the Exports in International Trade Statistics (sum of Exports of goods to the EU with the Exports to Third Countries).

[1] Contribution to growth, shift-share analysis: (rate of change) x (weight in the previous period) ÷ 100. The sum corresponds to the growth rate of Exports of Goods and Services over the past 12 months, according to statistics from the Balance of Payments Bank of Portugal (9.5%).

Table 21 - Goods and Services (Credit) - Services components
Annual rate of change (2004-2012)

Credit (Exports)	Share in 2011 (%)	2004	2005	2006	2007	2008	2009	2010	2011	jan-may 2012
Goods and Services	100.0	6.3	1.5	16.4	9.9	2.8	-15.3	12.7	13.3	6.6
Goods	69.0	5.7	0.7	15.1	7.5	1.8	-18.3	15.2	15.4	8.9
Services	31.0	8.0	3.5	19.9	15.7	5.3	-8.7	7.7	9.0	0.6
Transportation	8.4	9.1	11.4	41.7	18.9	10.4	-12.6	13.0	10.9	6.3
Travel	13.2	5.9	0.1	7.6	10.9	0.5	-7.2	10.0	7.2	5.8
Communications services	0.8	18.8	20.4	8.6	16.4	4.7	-15.6	-2.9	0.5	1.0
Construction services	0.9	27.4	-15.7	45.9	40.9	8.3	-21.9	-1.9	13.9	-16.5
Insurance services	0.2	32.9	-26.5	14.2	5.9	5.1	3.3	-9.1	11.1	-4.8
Financial services	0.4	30.6	-9.2	16.8	25.8	-4.7	-32.7	4.4	41.6	4.3
Computer and information services	0.6	20.6	4.5	41.6	36.8	15.3	1.0	1.1	37.7	35.6
Royalties and license fees	0.1	-15.7	69.5	51.4	10.0	-29.8	150.5	-71.7	41.2	17.4
Other business services	5.8	4.3	8.9	27.0	19.5	10.2	-5.9	1.7	8.7	-19.7
Personal, cult., and recreat. Serv.	0.4	30.8	6.7	22.5	-6.3	7.1	10.7	20.7	-11.6	8.6
Government services	0.3	6.8	-15.4	17.7	10.3	0.5	-2.4	17.6	3.7	16.6

Source: GEE, based on data from the Balance of Payments Statistics of Banco de Portugal.

Table 22 - Goods and Services (Debit) - Services components

values in Millions of Euros

DEBIT (Imports)	january to may		Structure (%)				Growth rates and contributions to growth			
			Annual		jan-may		Last 12 months ^[1]		jan-may	
	2011	2012	2006	2011	2011	2012	y.o.y., % ^[2]	contrib. p.p. ^[3]	y.o.y., %	contrib. p.p. ^[3]
Goods and Services	28 809	26 940	100.0	100.0	100.0	100.0	-5.0	-5.0	-6.5	-6.5
Goods	24 133	22 628	84.9	83.0	83.8	84.0	-5.8	-4.9	-6.2	-5.2
Services	4 676	4 312	15.1	17.0	16.2	16.0	-1.0	-0.2	-7.8	-1.3
Transportation	1 369	1 334	4.7	5.0	4.8	5.0	-0.5	0.0	-2.6	-0.1
Travel	1 224	1 213	4.2	4.4	4.3	4.5	-0.8	0.0	-0.9	0.0
Communications services	182	179	0.6	0.6	0.6	0.7	-4.4	0.0	-1.4	0.0
Construction services	47	42	0.2	0.2	0.2	0.2	8.9	0.0	-10.6	0.0
Insurance services	98	96	0.3	0.3	0.3	0.4	-3.7	0.0	-2.0	0.0
Financial services	227	166	0.3	0.8	0.8	0.6	23.4	0.1	-26.7	-0.2
Computer and information services	160	164	0.4	0.7	0.6	0.6	15.6	0.1	2.7	0.0
Royalties and license fees	167	157	0.5	0.6	0.6	0.6	-7.3	0.0	-5.7	0.0
Other business services	972	721	3.0	3.6	3.4	2.7	-6.5	-0.2	-25.9	-0.9
Personal, cult., and recreat. Serv.	192	204	0.6	0.7	0.7	0.8	0.7	0.0	6.0	0.0
Government services	37	36	0.3	0.1	0.1	0.1	-16.1	0.0	-3.9	0.0

Source: GEE, based on data from the Balance of Payments Statistics of Banco de Portugal for the Total Exports of Goods and Services.

Notes:

Fob values for Imports of goods.

[1] 12 months ending in may 2012

 [2] $(\text{jun } 11\text{-may } 12) / (\text{jun } 10\text{-may } 11) \times 100 - 100$

 [3] Contributions to growth, shift share analysis: $(\text{rate of change}) \times (\text{weight in the previous period}) \div 100$. Measures the proportion of growth of Imports attributable to each category specified.