

Statistics of International Trade

No. 12/2012

Includes baseline data from Statistics Portugal for the international trade of Portugal

■ From January to October 2012 - Intra + Extra-EU Trade

Contents

Global Evolution

- | | |
|------------------------------------|--------|
| 1. Recent Trade Balance | Pag. 3 |
| 2. Monthly and quarterly evolution | 4 |

Exports of Goods

- | | |
|---|----|
| 3. By Group of Products (Intra+Extra) | 5 |
| 4. By Group of Products (Extra) | 6 |
| 5. By Group of Products – growth rate and contribution to growth | 7 |
| 6. From selected markets (Intra+Extra) | 8 |
| 7. From selected markets (Extra) | 9 |
| 8. By destination market – structure (%) | 9 |
| 9. By destination market – growth rate and contribution to growth | 10 |

Imports of Goods

- | | |
|---|----|
| 10. By Group of Products (Intra+Extra EU) | 11 |
| 11. From a selection of markets (Intra+Extra) | 12 |
| 12. By Group of Products (Extra EU) | 13 |
| 13. From a selection of markets (Extra) | 13 |

By geographical and economic areas

- | | |
|---|----|
| 14. Main Countries (Intra and Extra) | 14 |
| 15. Imports: contribution to growth (Intra and Extra) | 16 |
| 16. Exports: contribution to growth (Intra and Extra) | 18 |

Goods and Services

- | | |
|--|----|
| 17. Trade in goods and services as a percentage of GDP | 20 |
| 18. Goods and Services (credit) – Services components | 21 |
| 19. Goods and Services (credit) – growth rate | 22 |
| 20. Goods and Services (debit) – Services components | 22 |

Charts Index

- | | |
|--|----|
| 1. Rate of coverage of the imports by the exports of goods | 2 |
| 2. Growth rate of exports by Group of Products and contribution to growth | 6 |
| 3. Growth rate of exports by markets and contribution to growth | 8 |
| 4. Growth rate of imports by markets and contribution to growth | 12 |
| 5. Share of services in total trade | 20 |
| 6. Growth rate of exports of goods and services and contribution to growth | 21 |

NOTE

In **June 2010**, Statistics Portugal announced a new data series on International Trade for the period 1993-2009. This new series resulted from a review process of its methodology, which reflected the need to obtain results with greater reliability and accuracy, and includes, in addition to various methodological changes, new information reported by companies.

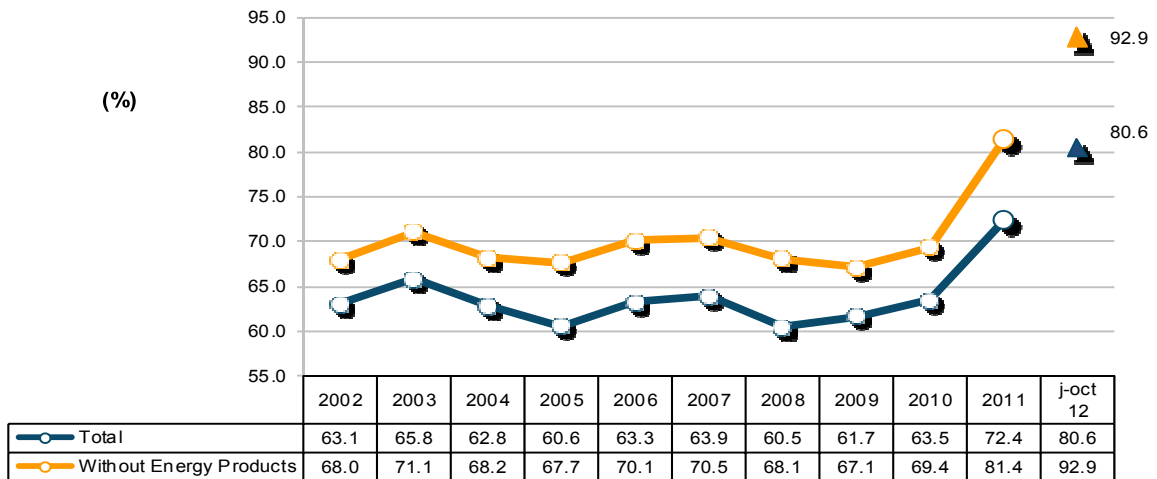
Since 1993, following the creation of the Single Market, the collection of information relating to international trade in goods is done by a new system supported by a compulsory survey (Intrastat declaration) for all operators, whose trade in goods with other Member States exceeds certain thresholds (assimilation threshold). Since 2005, and following the Community rules on quality control of the statistics on International Trade, a confrontation between regular information from the Intrastat system and data of an administrative nature was put in place, which included statements from Value Added Tax (VAT), as well as an analysis of the asymmetries with the statistics reported by other member countries. Following that, estimates for the total international trade, based on estimates for companies that are below the threshold of assimilation, as well as non-response of Intra-community trade started to be published.

The entry into force of “*Informação Empresarial Simplificada*” (IES) in 2007, contributed to ease the comparison of data on international trade with other sources, now made possible from 2006 onwards (reference period for the data). IES, along with information on the VAT constitutes an important source of information for the validity of the quality of the statistics on International Trade.

In **December 2012**, Statistics Portugal released the provisional data from the 2011 International Trade, as well as the 2010 final results.

Global Evolution¹

**Chart 1 – Progress of the coverage rate (fob/cif),
% imports by exports of goods
Intra + Extra EU Trade**



Source: GEE, based on data on International Trade statistics from Statistics Portugal (most up-to-date versions available). Estimates for operators under the assimilation threshold and non-responses are included in Intra-EU trade.

¹ Database of international trade (Intra and Extra EU) released by Statistics Portugal (SP) for the period of January to October 2012, corresponding to preliminary versions for both intra and extra community trade. The data for intratrade includes estimates for non-responses (value of transactions of companies for which SP has not yet received information), as well as periodic reporting of companies that are below the assimilation threshold (annual value of intra-Community below which operators are exempted from Intrastat statistical declaration, limited to delivery of the periodic tax declaration: in the case of Portugal, 200 thousand euros for imports from EU and 250 thousand for exports to EU in 2011). On the other hand, the current methodology considers, in addition to the regular comparison between the Intrastat declarations and Value Added Tax (VAT), the comparison with the data obtained from “*Informação Empresarial Simplificada*” (IES).

Table 1 – Recent evolution of the Portuguese Trade Balance (Goods)

Preliminary data version of january to october 2012

Intra + Extra-EU	2007	2008	2009	2010	2011	Annual Evolution 2007/11	january to october		Monthly Evolution 2011/12	Last 3 months		Last 12 months	
							2011	2012		aug 11 - oct 11	aug 12 - oct 12	nov 10 - oct 11	nov 11 - oct 12
Millions of Euros													
Exports (fob)	38 294	38 847	31 697	37 268	42 870		35 669	38 217		10 585	10 946	42 194	45 418
y.o.y. %	-	1.4	-18.4	17.6	15.0		-	7.1		-	3.4	-	7.6
Imports (cif)	59 927	64 194	51 379	58 647	59 243		49 918	47 436		14 317	14 237	60 483	56 761
y.o.y. %	-	7.1	-20.0	14.1	1.0		-	-5.0		-	-0.6	-	-6.2
Trade Balance (fob-cif)	-21 632	-25 347	-19 682	-21 379	-16 373		-14 249	-9 219		-3 732	-3 291	-18 288	-11 343
y.o.y. %	-	17.2	-22.3	8.6	-23.4		-	-35.3		-	-11.8	-	-38.0
Rate of Coverage (fob/cif), %	63.9	60.5	61.7	63.5	72.4		71.5	80.6		73.9	76.9	69.8	80.0
Without Energy products:													
Exports (fob)	36 568	36 688	30 151	34 877	39 775		33 178	34 876		9 757	9 996	39 375	41 472
y.o.y. %	-	0.3	-17.8	15.7	14.0		-	5.1		-	2.4	-	5.3
Imports (cif)	51 870	53 884	44 912	50 281	48 850		41 188	37 523		11 610	11 091	50 438	45 184
y.o.y. %	-	3.9	-16.7	12.0	-2.8		-	-8.9		-	-4.5	-	-10.4
Trade Balance (fob-cif)	-15 302	-17 196	-14 760	-15 404	-9 075		-8 010	-2 647		-1 853	-1 095	-11 063	-3 712
y.o.y. %	-	12.4	-14.2	4.4	-41.1		-	-67.0		-	-40.9	-	-66.4
Rate of Coverage (fob/cif), %	70.5	68.1	67.1	69.4	81.4		80.6	92.9		84.0	90.1	78.1	91.8
Intra-EU													
Millions of Euros													
Exports (fob)	29 525	28 904	23 892	27 573	31 344		23 521	24 099		7 665	7 605	30 818	31 922
y.o.y. %	-	-2.1	-17.3	15.4	13.7		-	2.5		-	-0.8	-	3.6
Imports (cif)	45 887	48 007	40 376	43 205	42 149		31 825	29 445		10 067	9 381	43 783	39 769
y.o.y. %	-	4.6	-15.9	7.0	-2.4		-	-7.5		-	-6.8	-	-9.2
Trade Balance (fob-cif)	-16 362	-19 103	-16 484	-15 631	-10 805		-8 304	-5 346		-2 402	-1 776	-12 965	-7 847
y.o.y. %	-	16.8	-13.7	-5.2	-30.9		-	-35.6		-	-26.1	-	-39.5
Rate of Coverage (fob/cif), %	64.3	60.2	59.2	63.8	74.4		73.9	81.8		76.1	81.1	70.4	80.3
Without Energy products:													
Exports (fob)	28 879	28 023	23 226	26 528	30 014		22 630	22 793		7 345	7 159	29 710	30 178
y.o.y. %	-	-3.0	-17.1	14.2	13.1		-	0.7		-	-2.5	-	1.6
Imports (cif)	43 871	45 441	38 792	41 216	39 818		30 110	27 452		9 572	8 839	41 470	37 161
y.o.y. %	-	3.6	-14.6	6.2	-3.4		-	-8.8		-	-7.7	-	-10.4
Trade Balance (fob-cif)	-14 992	-17 418	-15 566	-14 688	-9 804		-7 481	-4 659		-2 227	-1 680	-11 760	-6 983
y.o.y. %	-	16.2	-10.6	-5.6	-33.3		-	-37.7		-	-24.6	-	-40.6
Rate of Coverage (fob/cif), %	65.8	61.7	59.9	64.4	75.4		75.2	83.0		76.7	81.0	71.6	81.2
Extra-UE													
Millions of Euros													
Exports (fob)	8 769	9 943	7 804	9 189	10 982		7 916	9 763		2 828	3 366	10 345	12 829
y.o.y. %	-	13.4	-21.5	17.7	19.5		-	23.3		-	19.0	-	24.0
Imports (cif)	14 040	16 187	11 003	13 849	15 581		12 035	12 184		4 173	4 260	15 445	15 729
y.o.y. %	-	15.3	-32.0	25.9	12.5		-	1.2		-	2.1	-	1.8
Trade Balance (fob-cif)	-5 271	-6 244	-3 198	-4 660	-4 599		-4 120	-2 421		-1 345	-895	-5 100	-2 900
y.o.y. %	-	18.5	-48.8	45.7	-1.3		-	-41.2		-	-33.5	-	-43.1
Rate of Coverage (fob/cif), %	62.5	61.4	70.9	66.4	70.5		65.8	80.1		67.8	79.0	67.0	81.6
Without Energy products:													
Exports (fob)	7 690	8 666	6 925	7 769	9 212		6 622	8 080		2 339	2 790	8 741	10 670
y.o.y. %	-	12.7	-20.1	12.2	18.6		-	22.0		-	19.3	-	22.1
Imports (cif)	8 000	8 443	6 120	7 510	7 618		5 964	5 295		1 970	1 806	7 847	6 948
y.o.y. %	-	5.5	-27.5	22.7	1.4		-	-11.2		-	-8.3	-	-11.5
Trade Balance (fob-cif)	-310	223	806	259	1 595		658	2 785		368	983	894	3 722
y.o.y. %	-	-171.8	261.6	-67.9	516.2		-	323.2		-	167.2	-	316.1
Rate of Coverage (fob/cif), %	96.1	102.6	113.2	103.4	120.9		111.0	152.6		118.7	154.4	111.4	153.6

Source: GEE, based on data on International Trade statistics from Statistics Portugal (most up-to-date versions available). Estimates for operators under the assimilation threshold and non-responses are included in Intra-EU trade.

Notes:

Sum of Exports to EU and Exports to third countries.

Sum of Imports from EU and Imports from third countries.

Conversion factor used cif-fob for 2008, 2009, 2010, 2011 and 2012: 0.9529

Table 2 – Monthly and quarterly evolution of Portuguese International Trade
Preliminary data version of january to october 2012

values in Millions of Euros						
Intra+Extra EU-27	IMPORTS (cif)			EXPORTS (fob)		
	2011	2012	y.o.y., %	2011	2012	y.o.y., %
jan	4 610	4 726	2.5	3 199	3 623	13.3
feb	4 857	4 676	-3.7	3 368	3 797	12.7
mar	5 628	5 106	-9.3	3 807	4 149	9.0
apr	5 122	4 415	-13.8	3 472	3 558	2.5
may	5 570	5 031	-9.7	3 767	4 043	7.3
jun	4 781	4 536	-5.1	3 640	3 987	9.5
jul	5 033	4 709	-6.4	3 833	4 115	7.3
aug	4 318	4 403	2.0	2 949	3 355	13.8
sep	5 186	4 717	-9.0	3 815	3 574	-6.3
oct	4 814	5 117	6.3	3 821	4 018	5.2
nov	4 848			3 905		
dec	4 477			3 296		
Q1	15 095	14 507	-3.9	10 373	11 568	11.5
Q2	15 472	13 983	-9.6	10 878	11 588	6.5
Q3	14 537	13 829	-4.9	10 597	11 043	4.2
Q4	14 139			11 022		

Intra EU-27	IMPORTS (cif)			EXPORTS (fob)		
	2011	2012	y.o.y., %	2011	2012	y.o.y., %
jan	3 515	3 306	-5.9	2 504	2 656	6.1
feb	3 723	3 438	-7.7	2 588	2 746	6.1
mar	4 280	3 720	-13.1	2 922	3 015	3.2
apr	3 668	3 205	-12.6	2 584	2 548	-1.4
may	3 910	3 527	-9.8	2 856	2 860	0.1
jun	3 570	3 371	-5.6	2 725	2 934	7.7
jul	3 614	3 374	-6.7	2 875	2 922	1.6
aug	3 095	2 882	-6.9	2 082	2 168	4.1
sep	3 653	3 313	-9.3	2 817	2 591	-8.0
oct	3 659	3 796	3.7	2 819	2 769	-1.8
nov	3 579			2 831		
dec	3 355			2 305		
Q1	11 519	10 463	-9.2	8 015	8 417	5.0
Q2	11 148	10 103	-9.4	8 166	8 342	2.2
Q3	10 363	9 569	-7.7	7 774	7 681	-1.2
Q4	10 594			7 956		

Extra EU-27	IMPORTS (cif)			EXPORTS (fob)		
	2011	2012	y.o.y., %	2011	2012	y.o.y., %
jan	1 094	1 420	29.7	694	967	39.2
feb	1 134	1 238	9.2	780	1 051	34.8
mar	1 347	1 386	2.9	885	1 133	28.1
apr	1 454	1 210	-16.8	888	1 011	13.9
may	1 660	1 504	-9.3	910	1 182	29.9
jun	1 211	1 165	-3.7	914	1 053	15.1
jul	1 419	1 335	-5.9	958	1 193	24.5
aug	1 222	1 521	24.4	867	1 187	36.8
sep	1 533	1 404	-8.4	998	983	-1.6
oct	1 154	1 321	14.4	1 001	1 249	24.7
nov	1 269			1 073		
dec	1 122			991		
Q1	3 576	4 044	13.1	2 359	3 151	33.6
Q2	4 324	3 880	-10.3	2 712	3 246	19.7
Q3	4 174	4 260	2.1	2 823	3 362	19.1
Q4	3 545			3 065		

Source: GEE, based on data on International Trade statistics from Statistics Portugal (most up-to-date versions available). Estimates for operators under the assimilation threshold and non-responses are included in Intra-EU trade.

Exports* of Goods

Table 3 – Portuguese Exports (Intra + Extra EU) of Goods by Group of Products

Of which: products by Chapter (CN-2) above 30 million euros in 2012

Grp/ CN-2	Group of Products	Millions of Euros		Structure (%)		Growth rates and contributions to growth			
		jan-oct		jan-oct		Last 12 months ^[1]		jan-oct	
		2011	2012	2011	2012	y.o.y. % ^[2]	Contrib. p.p. % ^[3]	y.o.y. %	Contrib. p.p. %
	TOTAL EXPORTS	35 669	38 217	100.0	100.0	7.6	7.6	7.1	7.1
000	Agricultural products and food	3 976	4 273	11.1	11.2	8.6	1.0	7.5	0.8
22	Beverages, spirits and vinegar	824	896	2.3	2.3	9.2	0.2	8.6	0.2
03	Fish and crustaceans, molluscs and other aquatic invertebrates	498	481	1.4	1.3	-0.6	0.0	-3.4	0.0
15	Animal/vegetable fats and oils and their cleavage products; prepared edible fats; animal/vegetable waxes	322	367	0.9	1.0	20.0	0.2	14.0	0.1
24	Tobacco and manufactured tobacco substitutes	331	354	0.9	0.9	5.7	0.1	6.9	0.1
20	Preparations of vegetables, fruit, nuts or other parts of plants	262	288	0.7	0.8	11.9	0.1	9.9	0.1
04	Dairy produce; birds' eggs; natural honey; edible products of animal origin, nes.	247	283	0.7	0.7	13.0	0.1	14.7	0.1
08	Edible fruit and nuts; peel of citrus fruit or melons	219	245	0.6	0.6	11.0	0.1	11.9	0.1
16	Preparations of meat, of fish or of crustaceans, molluscs or other aquatic invertebrates	207	228	0.6	0.6	10.6	0.1	9.9	0.1
19	Preparations of cereals, flour, starch or milk; pastrycooks products	187	205	0.5	0.5	10.8	0.1	9.7	0.1
07	Edible vegetables and certain roots and tubers	146	163	0.4	0.4	7.8	0.0	11.5	0.0
21	Miscellaneous edible preparations	102	123	0.3	0.3	21.2	0.1	21.5	0.1
02	Meat and edible meat offal	96	122	0.3	0.3	28.3	0.1	27.5	0.1
17	Sugars and sugar confectionery	149	105	0.4	0.3	-21.0	-0.1	-29.7	-0.1
01	Live animals	55	82	0.2	0.2	43.5	0.1	50.7	0.1
05	Products of animal origin, not elsewhere specified or included	51	54	0.1	0.1	6.0	0.0	5.1	0.0
09	Coffee, tea, maté and spices	51	54	0.1	0.1	7.6	0.0	5.8	0.0
23	Residues and waste from the food industries; prepared animal fodder	48	52	0.1	0.1	9.2	0.0	9.1	0.0
06	Live trees and plants; bulbs, roots and the like; cut flowers and ornamental foliage	59	48	0.2	0.1	-20.2	0.0	-18.8	0.0
12	Oil seeds/oleaginous fruits/miscellaneous grains, seeds and fruits/industrial or medicinal plants/straw and fodder	43	44	0.1	0.1	-2.4	0.0	2.8	0.0
100	Mineral fuels and oils	2 491	3 341	7.0	8.7	40.0	2.7	34.1	2.4
27	Mineral fuel/oils and products of their distillation; bituminous substances; mineral waxes	2 491	3 341	7.0	8.7	40.0	2.7	34.1	2.4
200	Chemicals	4 528	4 824	12.7	12.6	7.0	0.9	6.5	0.8
39	Plastics and articles thereof	1 695	1 753	4.8	4.6	3.2	0.2	3.5	0.2
40	Rubber and articles thereof	764	889	2.1	2.3	16.7	0.4	16.3	0.4
29	Organic chemicals	736	786	2.1	2.1	8.9	0.2	6.8	0.1
30	Pharmaceutical products	472	539	1.3	1.4	13.6	0.2	14.2	0.2
38	Miscellaneous chemical products	256	218	0.7	0.6	-13.0	-0.1	-14.8	-0.1
32	Tanning/dyeing extracts; tannins & derivatives; colouring matter; paints & varnishes; mastics; inks	150	145	0.4	0.4	-4.3	0.0	-3.5	0.0
34	Soaps, surfactants, waxes, modelling pastes, 'dental waxes' and dental preparations, washing/lubricating/polishing or scouring prep.	113	133	0.3	0.3	19.8	0.1	17.7	0.1
31	Fertilisers	102	109	0.3	0.3	10.4	0.0	6.6	0.0
33	Essential oils and resinoids; perfumery, cosmetic or toilet preparations	106	108	0.3	0.3	4.2	0.0	1.1	0.0
35	Albuminoid substances; modified starches; glues; enzymes	60	73	0.2	0.2	24.0	0.0	22.3	0.0
28	Inorganic chemicals; organic or inorganic compounds of precious metals/rare-earth metals/radioactive elements/isotopes	63	62	0.2	0.2	-3.0	0.0	-2.8	0.0
300	Wood, cork and paper	3 028	3 074	8.5	8.0	0.9	0.1	1.5	0.1
48	Paper and paperboard; articles of paper pulp, of paper or of paperboard	1 312	1 345	3.7	3.5	1.3	0.0	2.5	0.1
45	Cork and articles of cork	689	718	1.9	1.9	3.5	0.1	4.1	0.1
44	Wood and articles of wood; wood charcoal	519	515	1.5	1.3	0.5	0.0	-0.8	0.0
47	Pulp of wood or of other fibrous cellulosic material; recovered (waste and scrap) paper or paperboard	453	436	1.3	1.1	-4.9	-0.1	-3.7	0.0
49	Printed books, newspapers, pictures and other products of the printing industry; manuscripts, typescripts and plans	54	60	0.2	0.2	15.7	0.0	10.5	0.0
400	Hides, leather and textiles	1 569	1 539	4.4	4.0	-1.9	-0.1	-1.9	-0.1
63	Other made-up textile articles; sets; worn clothing and worn textile articles; rags	433	410	1.2	1.1	-6.1	-0.1	-5.4	-0.1
55	Man-made staple fibres	221	188	0.6	0.5	-14.1	-0.1	-14.9	-0.1
56	Wadding, felt and nonwovens; special yarns; twine, cordage, ropes and cables and articles thereof	177	179	0.5	0.5	3.8	0.0	1.2	0.0
59	Impregnated, coated, covered or laminated textile fabrics; textile articles for industrial use	128	151	0.4	0.4	17.6	0.1	17.5	0.1
52	Cotton	150	121	0.4	0.3	-18.7	-0.1	-19.0	-0.1
60	Knitted or crocheted fabrics	97	98	0.3	0.3	-0.6	0.0	1.4	0.0
42	Articles of leather; saddlery and harness; travel goods, handbags and similar containers; articles of animal gut (other than silkworm gut)	55	68	0.2	0.2	26.3	0.0	24.0	0.0
58	Special woven fabrics; tufted textile fabrics; lace; tapestries; trimmings; embroidery	66	67	0.2	0.2	3.5	0.0	1.3	0.0
41	Raw hides and skins (other than furskins) and leather	60	66	0.2	0.2	7.4	0.0	10.4	0.0
54	Man-made filaments; strip and the like of man-made textile materials	55	58	0.2	0.2	10.0	0.0	6.4	0.0
57	Carpets and other textile floor coverings	52	57	0.1	0.1	5.1	0.0	9.5	0.0
51	Wool, fine or coarse animal hair; horsehair yarn and woven fabric	53	57	0.1	0.1	5.5	0.0	8.0	0.0
500	Clothing and footwear	3 451	3 490	9.7	9.1	0.7	0.1	1.1	0.1
64	Footwear, gaiters and the like; parts of such articles	1 384	1 402	3.9	3.7	0.6	0.0	1.3	0.1
61	Articles of apparel and clothing accessories, knitted or crocheted	1 344	1 321	3.8	3.5	-2.3	-0.1	-1.7	-0.1
62	Articles of apparel and clothing accessories, not knitted or crocheted	691	728	1.9	1.9	5.5	0.1	5.3	0.1
65	Headgear and parts thereof	23	30	0.1	0.1	28.2	0.0	30.3	0.0
600	Ores and metals	3 988	4 482	11.2	11.7	12.0	1.3	12.4	1.4
73	Articles of iron or steel	915	1 090	2.6	2.9	17.2	0.4	19.2	0.5
72	Iron and steel	994	1 025	2.8	2.7	3.8	0.1	3.1	0.1
71	Natural/cultured pearls, precious stones, precious metals and articles thereof; imitation jewellery, coin	510	689	1.4	1.8	42.8	0.6	35.1	0.5
76	Aluminium and articles thereof	403	412	1.1	1.1	-0.6	0.0	2.2	0.0
26	Ores, slag and ash	372	393	1.0	1.0	0.4	0.0	5.6	0.1
25	Salt; sulphur; earths and stone; plastering materials, lime and cement	218	252	0.6	0.7	13.2	0.1	15.3	0.1
83	Miscellaneous articles of base metal	206	229	0.6	0.6	10.3	0.1	11.1	0.1
74	Copper and articles thereof	211	229	0.6	0.6	9.9	0.1	8.3	0.0
82	Tools, implements, cutlery, spoons and forks, of base metal; parts thereof of base metal	120	133	0.3	0.3	11.6	0.0	10.9	0.0
700	Machinery	5 192	5 739	14.6	15.0	10.3	1.5	10.5	1.5
85	Electrical machinery and equipment; sound recorders/reproducers; parts and accessories thereof	3 128	3 286	8.8	8.6	6.0	0.5	5.0	0.4
84	Nuclear reactors, boilers, machinery and mechanical appliances; parts thereof	2 063	2 453	5.8	6.4	16.7	1.0	18.9	1.1
800	Transport equipment	4 663	4 531	13.1	11.9	-1.5	-0.2	-2.8	-0.4
87	Vehicles other than railway or tramway rolling stock, and parts and accessories thereof	4 483	4 355	12.6	11.4	-1.8	-0.2	-2.9	-0.4
88	Aircraft, spacecraft, and parts thereof	128	116	0.4	0.3	3.0	0.0	-9.6	0.0
89	Ships, boats and floating structures	45	48	0.1	0.1	1.5	0.0	8.1	0.0
900	Other manufactured goods	2 785	2 925	7.8	7.7	5.0	0.4	5.0	0.4
94	Furniture; lamps & lighting fittings, nes.; illuminated signs/nameplates and the like; prefab. buildings	1 012	1 070	2.8	2.8	5.6	0.2	5.7	0.2
69	Ceramic products	475	482	1.3	1.3	1.4	0.0	1.5	0.0
70	Glass and glassware	417	415	1.2	1.1	0.5	0.0	-0.5	0.0
90	Optical/photographic/cinematographic/measuring/checking/precision/medical/surgical instruments and apparatus	310	380	0.9	1.0	21.0	0.2	22.8	0.2
68	Articles of stone, plaster, cement, asbestos, mica or similar materials	318	336	0.9	0.9	7.2	0.1	5.7	0.1
96	Miscellaneous manufactured articles	43	64	0.1	0.2	40.3	0.0	44.1	0.1
91	Clocks and watches and parts thereof	58	64	0.2	0.2	11.4	0.0	10.5	0.0
95	Toys, games and sports requisites; parts and accessories thereof	39	45	0.1	0.1	14.4	0.0	16.3	0.0
93	Arms and ammunition; parts and accessories thereof	31	32	0.1	0.1	-1.3	0.0	0.8	0.0

Memo:

Total without Energy Products | 33 178 | 34 876 | 93.0 | 91.3 | 5.3 | 5.0 | 5.1 | 4.8

Source: GEE, based on data on International Trade statistics from Statistics Portugal (most up-to-date versions available). Estimates for operators under the assimilation threshold and non-responses are included in Intra-EU trade.

Notes:

*Sum of Exports to EU and Exports to third countries.

Composition by Group of Products - 000 (Chap. 01 to 24 of CN) - 100 (Chap. 27) - 200 (Chap. 28 to 40) - 300 (Chap. 44 to 49) - 400 (Chap. 41 to 43, 50 to 60 and 63) - 500 (Chap. 61, 62, 64 to 67) - 600 (Chap. 25, 26, 71 to 83) - 700 (Chap. 84 and 85) - 800 (Chap. 86 to 89) - 900 (Chap. 68 to 70 and 90 to 99).

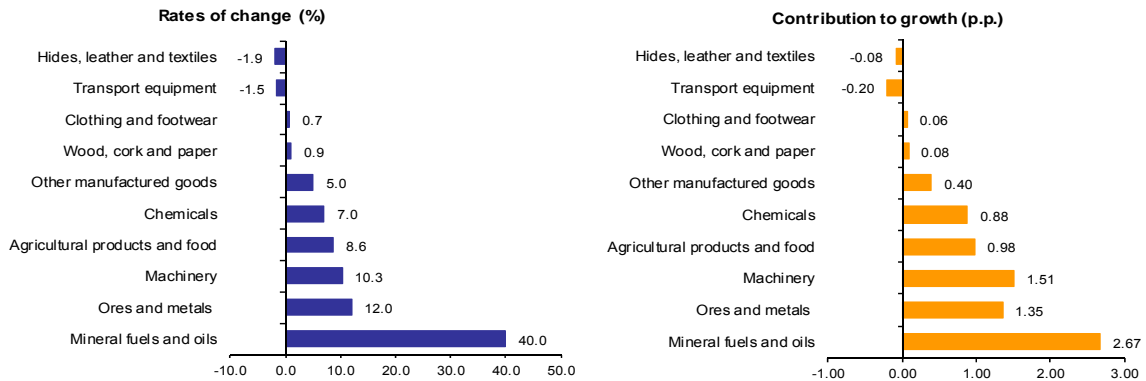
[1] 12 months ending in October 2012

[2] (nov 11-oct 12)/(nov 10-oct 11) x 100 - 100

[3] Contribution to the growth rate of exports, shift share analysis: (rate of change) x (weight in the previous period) x 100.

Chart 2 - Growth rates of exports of Portuguese goods by group of products and its contribution to growth (Intra + Extra-EU)

Previous 12 months ending in october 2012



Source: Table 5 – Portuguese Exports (Intra + Extra EU) of Goods by Group of Products.

Table 4 - Portuguese Exports of Goods by Group of Products (Extra-EU)

Preliminary data version of january to october 2012

Group of Products	values in Millions of Euros						
	january to october		y.o.y., %		Structure (%)		
	2011	2012	Last 12 months ^[1]	jan-oct 12/11	Last 12 months ^[1]	2011	2012
Total Exports	8 896	11 008	24.3	23.7	100.0	100.0	100.0
000 Agricultural products and food	1 184	1 330	14.2	12.3	12.5	13.3	12.1
100 Mineral fuels and oils	1 409	1 839	36.2	30.4	16.8	15.8	16.7
200 Chemicals	1 023	1 114	11.4	8.9	10.1	11.5	10.1
300 Wood, cork and paper	865	913	6.6	5.6	8.4	9.7	8.3
400 Hides, leather and textiles	422	436	4.3	3.4	4.0	4.7	4.0
500 Clothing and footwear	275	323	17.2	17.7	2.9	3.1	2.9
600 Ores and metals	997	1 425	43.2	42.9	12.7	11.2	12.9
700 Machinery	1 578	2 001	23.7	26.8	17.9	17.7	18.2
800 Transport equipment	476	822	67.5	72.5	7.4	5.4	7.5
900 Other manufactured goods	666	804	18.9	20.7	7.4	7.5	7.3
Memo:							
<i>Total without Energy Products</i>	<i>7 486</i>	<i>9 169</i>	<i>22.2</i>	<i>22.5</i>	<i>83.2</i>	<i>84.2</i>	<i>83.3</i>

Source: GEE, based on data on International Trade statistics from Statistics Portugal (most up-to-date versions available).

Note:

Composition by Group of Products - 000 (Chap. 01 to 24 of CN) - 100 (Chap. 27) - 200 (Chap. 28 to 40) - 300 (Chap. 44 to 49) - 400 (Chap. 41 to 43, 50 to 60 and 63) - 500 (Chap. 61, 62, 64 to 67) - 600 (Chap. 25, 26, 71 to 83) - 700 (Chap. 84 and 85) - 800 (Chap. 86 to 89) - 900 (Chap. 68 to 70 and 90 to 99).

[1] 12 months ending in october 2012

**Table 5 – Exports (Intra+Extra EU) of Portuguese goods by Group of Products (2007-2012)
sorted in descending order of their relative weight in 2011**

Growth rate and Contribution to growth

Intra + Extra EU (Fob)		Share in 2011 (%)	y.o.y., %					Contrib. (p.p.) ^[1]		
Grp. and CN-2	Description		2007	2008	2009	2010	2011	jan-oct 2012	2011	jan-oct 2012
	TOTAL	100.0	7.4	1.4	-18.4	17.6	15.0	7.1	15.0	7.1
700	Machinery	14.6	7.6	-0.8	-31.0	8.7	11.4	10.5	1.7	1.5
85	Electrical machinery and equipment; sound recorders/reproducers; parts and accessories thereof	8.8	9.3	-1.4	-37.4	18.1	13.4	5.0	1.2	0.4
84	Nuclear reactors, boilers, machinery and mechanical appliances; parts thereof	5.8	5.1	0.0	-21.4	-2.6	8.6	18.9	0.5	1.1
800	Transport equipment	13.0	2.8	-2.7	-21.4	22.0	22.4	-2.8	2.7	-0.4
87	Vehicles other than railway or tramway rolling stock, and parts and accessories thereof	12.4	-0.7	-3.5	-19.5	22.3	23.4	-2.9	2.7	-0.4
200	Chemicals	12.5	10.1	2.4	-14.6	24.6	20.8	6.5	2.5	0.8
39	Plastics and articles thereof	4.6	12.9	0.8	-16.5	27.9	14.1	3.5	0.7	0.2
000	Agricultural products and food	11.4	17.1	15.0	-5.0	9.3	12.3	7.5	1.4	0.8
600	Ores and metals	11.2	11.5	-1.5	-23.9	27.3	21.0	12.4	2.2	1.4
500	Clothing and footwear	9.5	1.9	-2.8	-11.4	7.9	8.9	1.1	0.9	0.1
61	Articles of apparel and clothing accessories, knitted or crocheted	3.8	0.6	-5.5	-11.9	4.7	4.6	-1.7	0.2	-0.1
64	Footwear, gaiters and the like; parts of such articles	3.7	2.7	2.6	-8.2	9.9	12.9	1.3	0.5	0.1
300	Wood, cork and paper	8.4	-3.5	1.9	-12.1	25.1	7.8	1.5	0.7	0.1
48	Paper and paperboard; articles of paper pulp, of paper or of paperboard	3.7	0.2	8.3	-4.5	35.3	6.3	2.5	0.3	0.1
900	Other manufactured goods	7.8	29.6	-3.2	-9.2	6.0	5.1	5.0	0.4	0.4
100	Mineral fuels and oils	7.2	-8.6	25.1	-28.4	54.7	29.4	34.1	1.9	2.4
27	Mineral fuel/oils and products of their distillation; bituminous substances; mineral waxes	7.2	-8.6	25.1	-28.4	54.7	29.4	34.1	1.9	2.4
400	Hides, leather and textiles	4.4	3.7	-5.6	-16.3	16.2	11.5	-1.9	0.5	-0.1

Source: GEE, based on data on International Trade statistics from Statistics Portugal (most up-to-date versions available). Estimates for operators under the assimilation threshold and non-responses are included in Intra-EU trade.

Note:

[1] Contributions to growth, shift share analysis: (rate of change) x (weight in the previous period) ÷ 100.

Table 6 – Exports (Intra+Extra EU) of goods to selected markets

Preliminary data version of January to October 2012

Intra + Extra-EU (Fob)		values in Millions of Euros							
Destination	jan-oct		Structure (%)		Growth rates and contributions to growth				
	2011	2012	jan-oct		Last 12 months ^[1]		jan-oct		
			2011	2012	y.o.y., % ^[2]	Contrib. p.p. ^[3]	y.o.y. %	Contrib. p.p. ^[3]	
TOTAL	35 669	38 217	100.0	100.0	7.6	7.6	7.1	7.1	
INTRA EU(27)	26 773	27 209	75.1	71.2	2.1	1.6	1.6	1.2	
of which:									
EU-15	25 677	25 984	72.0	68.0	1.7	1.2	1.2	0.9	
Spain	9 004	8 574	25.2	22.4	-4.5	-1.2	-4.8	-1.2	
Germany	4 901	4 761	13.7	12.5	-1.8	-0.2	-2.8	-0.4	
France	4 384	4 528	12.3	11.8	4.1	0.5	3.3	0.4	
United Kingdom	1 870	1 980	5.2	5.2	6.0	0.3	5.9	0.3	
Netherlands	1 426	1 602	4.0	4.2	12.6	0.5	12.4	0.5	
Italy	1 327	1 382	3.7	3.6	3.0	0.1	4.1	0.2	
Belgium	1 105	1 193	3.1	3.1	10.5	0.3	8.0	0.2	
Sweden	373	365	1.0	1.0	-3.2	0.0	-2.1	0.0	
Denmark	224	252	0.6	0.7	10.7	0.1	12.7	0.1	
Enlargement	1 096	1 226	3.1	3.2	11.9	0.4	11.8	0.4	
Poland	332	337	0.9	0.9	5.0	0.0	1.5	0.0	
EXTRA EU(27)	8 896	11 008	24.9	28.8	24.3	6.1	23.7	5.9	
of which:									
Angola	1 836	2 448	5.1	6.4	32.1	1.7	33.3	1.7	
United States	1 192	1 587	3.3	4.2	34.3	1.1	33.2	1.1	
Brazil	469	578	1.3	1.5	25.0	0.3	23.4	0.3	
Mexico	389	176	1.1	0.5	-45.4	-0.5	-54.7	-0.6	
China	279	696	0.8	1.8	152.1	1.2	150.0	1.2	
Morocco	323	395	0.9	1.0	22.1	0.2	22.4	0.2	
Switzerland	312	337	0.9	0.9	7.8	0.1	8.1	0.1	
Algeria	309	345	0.9	0.9	9.6	0.1	11.4	0.1	
Turkey	253	304	0.7	0.8	19.8	0.1	20.4	0.1	
Cape Verde	212	183	0.6	0.5	-12.0	-0.1	-13.6	-0.1	
Memo:									
Gibraltar	193	230	0.5	0.6	36.3	0.2	19.3	0.1	
ACPOL ^[4]	2 310	2 968	6.5	7.8	28.0	1.9	28.5	1.8	
EFTA	393	434	1.1	1.1	10.5	0.1	10.4	0.1	

Source: GEE, based on data on International Trade statistics from Statistics Portugal (most up-to-date versions available). Estimates for operators under the assimilation threshold and non-responses are included in Intra-EU trade.

Notes:

Countries ranked in descending order of value in 2011.

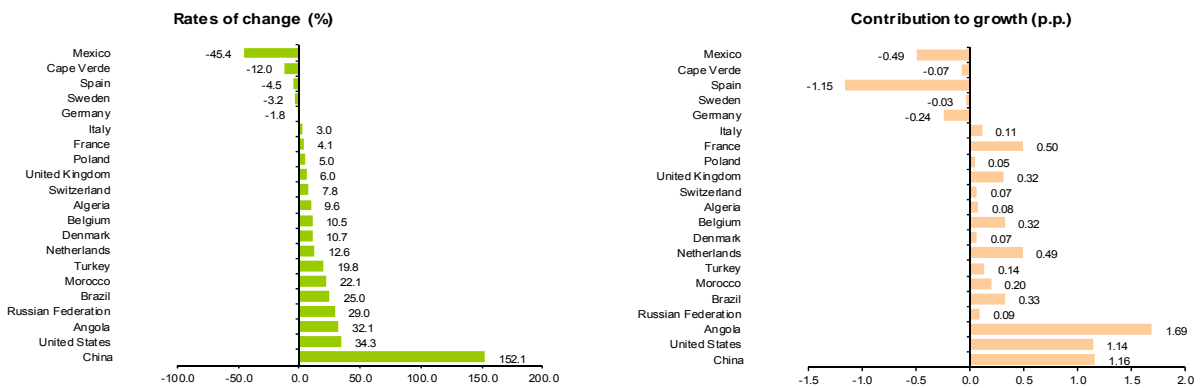
[1] 12 months ending in October 2012

[2] $(\text{nov } 11\text{-oct } 12) / (\text{nov } 10\text{-oct } 11) \times 100 - 100$

[3] Contributions to growth, shift share analysis: $(\text{rate of change}) \times (\text{weight in the previous period}) \div 100$.

[4] African Countries of Portuguese Official Language.

Chart 3 - Growth rates of Exports (Intra + Extra-EU) to selected markets and corresponding contributions to growth
Previous 12 months ending in October 2012



Source: Table 8 – Exports (Intra+Extra EU) of goods from selected markets.

Table 7 - Exports of goods to selected markets
Preliminary data version of january to october 2012

Extra-EU (Fob)		values in Millions of Euros						
Destination	jan-oct		Structure (%)				y.o.y., %	
	2011	2012	Annual		jan-oct		Last 12 months ^[1]	jan-oct 12/11
			2006	2011	2011	2012		
EXTRA EU (27)	8 896	11 008	100.0	100.0	100.0	100.0	24.3	23.7
of which:								
Angola	1 836	2 448	15.5	21.3	20.6	22.2	32.1	33.3
United States	1 192	1 587	27.0	13.7	13.4	14.4	34.3	33.2
Brazil	469	578	3.3	5.3	5.3	5.3	25.0	23.4
Mexico	389	176	1.8	4.2	4.4	1.6	-45.4	-54.7
China	279	696	2.7	3.6	3.1	6.3	152.1	150.0
Morocco	323	395	2.1	3.6	3.6	3.6	22.1	22.4
Switzerland	312	337	3.5	3.4	3.5	3.1	7.8	8.1
Algeria	309	345	0.9	3.3	3.5	3.1	9.6	11.4
Turkey	253	304	3.0	2.7	2.8	2.8	19.8	20.4
Cape Verde	212	183	2.4	2.3	2.4	1.7	-12.0	-13.6
Memo:								
Gibraltar	193	230	0.4	2.3	2.2	2.1	36.3	19.3
ACPOL ^[2]	2 310	2 968	19.6	26.6	26.0	27.0	28.0	28.5
EFTA	393	434	5.0	4.3	4.4	3.9	10.5	10.4

Source: GEE, based on data on International Trade statistics from Statistics Portugal (most up-to-date versions available).

Note:

Countries ranked in descending order of value in 2011.

[1] (nov 11-oct 12)/(nov 10-oct 11) x 100 - 100

[2] African Countries of Portuguese Official Language.

Table 8 - Exports (Intra + Extra-EU) of Portuguese Goods to a selection of markets (2007-2012) - structure (%)

Main markets in 2011

Destination	2007	2008	2009	2010	2011	jan-oct	
						2011	2012
Total	100.0	100.0	100.0	100.0	100.0	100.0	100.0
INTRA EU(27)	77.1	74.4	75.4	75.4	74.4	75.1	71.2
EU-15	74.7	71.6	72.5	72.3	71.3	72.0	68.0
Spain	28.7	27.9	27.2	27.0	24.9	25.2	22.4
Germany	12.9	12.8	13.0	13.0	13.6	13.7	12.5
France	12.6	11.8	12.4	12.0	12.2	12.3	11.8
United Kingdom	6.0	5.5	5.6	5.5	5.2	5.2	5.2
Netherlands	3.5	3.3	3.6	3.9	3.9	4.0	4.2
Italy	4.1	3.7	3.7	3.7	3.7	3.7	3.6
Belgium	2.6	2.5	2.5	2.6	3.1	3.1	3.1
Enlargement	2.4	2.8	2.8	3.1	3.1	3.1	3.2
EXTRA EU(27)	22.9	25.6	24.6	24.6	25.6	24.9	28.8
Angola	4.4	5.8	7.1	5.1	5.4	5.1	6.4
United States	4.7	3.4	3.2	3.5	3.5	3.3	4.2
Brazil	0.7	0.8	0.9	1.2	1.4	1.3	1.5
Mexico	0.3	0.6	0.6	1.1	1.1	1.1	0.5
China	0.5	0.5	0.7	0.6	0.9	0.8	1.8
Morocco	0.5	0.7	0.7	0.8	0.9	0.9	1.0
Switzerland	0.7	0.8	0.9	0.9	0.9	0.9	0.9
Algeria	0.2	0.5	0.6	0.6	0.8	0.9	0.9
Turkey	0.6	0.6	0.6	0.7	0.7	0.7	0.8
Cape Verde	0.6	0.7	0.7	0.7	0.6	0.6	0.5

Source: GEE, based on data on International Trade statistics from Statistics Portugal (most up-to-date versions available). Estimates for operators under the assimilation threshold and non-responses are included in Intra-EU trade.

Table 9 - Exports (Intra + Extra-EU) of Portuguese Goods to a selection of markets (2008-2012) - structure (%), growth rate and contribution to growth ^[1]
Main markets in 2011

Destination	Share in 2011 (%)	y.o.y., %					Contrib. (p.p.) ^[1]	
		2008	2009	2010	2011	2012 jan-oct	2011	jan-oct 2012
Total	100.0	1.4	-18.4	17.6	15.0	7.1	15.0	7.1
INTRA EU (27)	74.4	-2.1	-17.3	17.6	13.5	1.6	10.2	1.2
EU-15	71.3	-2.8	-17.4	17.2	13.5	1.2	9.8	0.9
Spain	24.9	-1.4	-20.3	16.7	6.1	-4.8	1.6	-1.2
Germany	13.6	-0.1	-17.1	18.1	19.8	-2.8	2.6	-0.4
France	12.2	-5.0	-14.2	13.8	16.5	3.3	2.0	0.4
United Kingdom	5.2	-8.1	-15.8	14.0	9.6	5.9	0.5	0.3
Netherlands	3.9	-3.6	-10.2	25.6	16.3	12.4	0.6	0.5
Italy	3.7	-9.4	-17.1	16.1	13.7	4.1	0.5	0.2
Belgium	3.1	-1.6	-18.9	23.4	39.6	8.0	1.0	0.2
Enlargement	3.1	19.2	-16.1	28.8	14.4	11.8	0.4	0.4
EXTRA EU (27)	25.6	13.4	-21.5	17.4	19.6	23.7	4.8	5.9
Angola	5.4	34.3	-0.8	-15.0	22.3	33.3	1.1	1.7
United States	3.5	-25.0	-24.5	30.7	13.1	33.2	0.5	1.1
Brazil	1.4	23.9	-7.9	49.2	32.7	23.4	0.4	0.3
Mexico	1.1	85.3	-8.5	99.4	13.7	-54.7	0.1	-0.6
China	0.9	1.6	20.5	5.1	70.3	150.0	0.4	1.2
Morocco	0.9	37.1	-21.2	40.3	28.8	22.4	0.2	0.2
Switzerland	0.9	12.6	-3.5	15.2	11.7	8.1	0.1	0.1
Algeria	0.8	126.9	9.0	7.9	68.3	11.4	0.4	0.1
Turkey	0.7	-2.1	-8.0	32.0	12.6	20.4	0.1	0.1
Cape Verde	0.6	13.0	-13.5	17.9	-3.2	-13.6	0.0	-0.1

Source: GEE, based on data on International Trade statistics from Statistics Portugal (most up-to-date versions available). Estimates for operators under the assimilation threshold and non-responses are included in Intra-EU trade.

Note:

[1] Contributions to growth, shift share analysis: (rate of change) x (weight in the previous period) ÷ 100.

Imports* of Goods

Table 10 - Portuguese Imports of goods by Group of Products

Of which: products by Chapter (CN-2) above 55 million euros in 2012

Grp/ CN-2	Groups of Products	Millions of Euros		Structure (%)		Growth rates and contributions to growth			
		jan-oct		jan-oct		Last 12 months ^[1]		jan-oct	
		2011	2012	2011	2012	y.o.y. % ^[2]	Contrib. p.p. % ^[3]	y.o.y. %	Contrib. p.p. % ^[3]
	TOTAL IMPORTS	49 918	47 436	100.0	100.0	-6.2	-6.2	-5.0	-5.0
000	Agricultural products and food	7 460	7 307	14.9	15.4	-1.2	-0.2	-2.1	-0.3
03	Fish and crustaceans, molluscs and other aquatic invertebrates	1 133	1 133	2.3	2.4	1.0	0.0	0.0	0.0
10	Cereals	687	710	1.4	1.5	5.1	0.1	3.3	0.0
02	Meat and edible meat offal	683	660	1.4	1.4	-3.5	0.0	-3.4	0.0
12	Oil seeds/oleaginous fruits/miscellaneous grains, seeds and fruits/industrial or medicinal plants/straw and fodder	464	496	0.9	1.0	8.4	0.1	7.1	0.1
15	Animal/vegetable fats and oils and their cleavage products; prepared edible fats; animal/vegetable waxes	508	474	1.0	1.0	-1.4	0.0	-6.7	-0.1
04	Dairy produce; birds eggs; natural honey; edible products of animal origin, nes.	432	416	0.9	0.9	-3.9	0.0	-3.8	0.0
08	Edible fruit and nuts; peel of citrus fruit or melons	405	384	0.8	0.8	-5.5	0.0	-5.2	0.0
19	Preparations of cereals, flour, starch or milk; pastrycooks products	373	369	0.7	0.8	-1.8	0.0	-1.3	0.0
22	Beverages, spirits and vinegar	337	321	0.7	0.7	-3.4	0.0	-4.9	0.0
23	Residues and waste from the food industries; prepared animal fodder	309	303	0.6	0.6	-6.0	0.0	-1.9	0.0
21	Miscellaneous edible preparations	312	288	0.6	0.6	-6.6	0.0	-7.6	0.0
17	Sugars and sugar confectionery	265	247	0.5	0.5	-5.5	0.0	-6.9	0.0
20	Preparations of vegetables, fruit, nuts or other parts of plants	238	227	0.5	0.5	-2.9	0.0	-4.5	0.0
07	Edible vegetables and certain roots and tubers	246	216	0.5	0.5	-13.7	-0.1	-12.5	-0.1
09	Coffee, tea, maté and spices	195	197	0.4	0.4	4.3	0.0	0.9	0.0
24	Tobacco and manufactured tobacco substitutes	182	193	0.4	0.4	10.8	0.0	6.0	0.0
16	Preparations of meat, of fish or of crustaceans, molluscs or other aquatic invertebrates	183	189	0.4	0.4	2.6	0.0	3.3	0.0
01	Live animals	184	165	0.4	0.3	-10.4	0.0	-10.6	0.0
18	Cocoa and cocoa preparations	131	125	0.3	0.3	-4.3	0.0	-4.8	0.0
11	Products of the milling industry; malt; starches; inulin; wheat gluten	62	67	0.1	0.1	9.7	0.0	7.4	0.0
06	Live trees and plants; bulbs, roots and the like; cut flowers and ornamental foliage	67	60	0.1	0.1	-13.9	0.0	-11.3	0.0
100	Mineral fuels and oils	8 730	9 913	17.5	20.9	15.3	2.5	13.6	2.4
27	Mineral fuel/oils and products of their distillation; bituminous substances; mineral waxes	8 730	9 913	17.5	20.9	15.3	2.5	13.6	2.4
200	Chemicals	7 978	7 936	16.0	16.7	-1.1	-0.2	-0.5	-0.1
39	Plastics and articles thereof	2 109	2 001	4.2	4.2	-5.6	-0.2	-5.1	-0.2
30	Pharmaceutical products	1 772	1 810	3.6	3.8	1.4	0.0	2.1	0.1
29	Organic chemicals	959	1 191	1.9	2.5	23.9	0.4	24.2	0.5
40	Rubber and articles thereof	710	667	1.4	1.4	-5.4	-0.1	-6.1	-0.1
38	Miscellaneous chemical products	693	610	1.4	1.3	-12.6	-0.2	-12.1	-0.2
33	Essential oils and resinoids; perfumery, cosmetic or toilet preparations	444	426	0.9	0.9	-3.8	0.0	-4.2	0.0
32	Tanning/dyeing extracts; tannins & derivatives; colouring matter; paints & varnishes; mastics; inks	444	408	0.9	0.9	-7.6	-0.1	-7.9	-0.1
34	Soaps, artif. waxes, candles, modelling pastes, 'dental waxes' and dental preparations, washing/lubricating/polishing or scouring prep.	306	291	0.6	0.6	-6.8	0.0	-5.2	0.0
28	Inorganic chemicals; organic or inorganic compounds of precious metals/rare-earth metals/radioactive elements/isotopes	280	277	0.6	0.6	-3.2	0.0	-0.8	0.0
31	Fertilisers	133	142	0.3	0.3	5.4	0.0	6.8	0.0
35	Albuminoidal substances; modified starches; glues; enzymes	75	67	0.2	0.1	-10.8	0.0	-11.5	0.0
300	Hides, wood, cork and paper	2 330	2 010	4.7	4.2	-13.0	-0.6	-13.7	-0.6
48	Paper and paperboard; articles of paper pulp, of paper or of paperboard	954	783	1.9	1.7	-16.3	-0.3	-17.9	-0.3
44	Wood and articles of wood; wood charcoal	516	401	1.0	0.8	-21.2	-0.2	-22.3	-0.2
41	Raw hides and skins (other than furskins) and leather	340	326	0.7	0.7	-4.7	0.0	-4.1	0.0
42	Articles of leather, saddlery and harness; travel goods, handbags and similar containers; articles of animal gut (other than silk worm gut)	191	203	0.4	0.4	3.4	0.0	6.5	0.0
49	Printed books, newspapers, pictures and other products of the printing industry; manuscripts, typescripts and plans	150	129	0.3	0.3	-12.6	0.0	-13.5	0.0
45	Cork and articles of cork	115	113	0.2	0.2	-1.7	0.0	-1.8	0.0
400	Textiles, clothing and footwear	3 398	3 057	6.8	6.4	-10.3	-0.7	-10.0	-0.7
62	Articles of apparel and clothing accessories, not knitted or crocheted	728	670	1.5	1.4	-8.0	-0.1	-8.0	-0.1
61	Articles of apparel and clothing accessories, knitted or crocheted	736	651	1.5	1.4	-10.9	-0.2	-11.6	-0.2
64	Footwear, gaiters and the like; parts of such articles	497	479	1.0	1.0	-3.8	0.0	-3.7	0.0
52	Cotton	375	278	0.8	0.6	-26.5	-0.2	-25.9	-0.2
54	Man-made filaments; strip and the like of man-made textile materials	240	246	0.5	0.5	2.8	0.0	2.5	0.0
55	Man-made staple fibres	217	172	0.4	0.4	-21.0	-0.1	-20.7	-0.1
63	Other made-up textile articles; sets; worn clothing and worn textile articles; rags	129	101	0.3	0.2	-18.6	0.0	-21.5	-0.1
51	Wool, fine or coarse animal hair; horsehair yarn and woven fabric	97	90	0.2	0.2	-7.2	0.0	-7.3	0.0
59	Impregnated, coated, covered or laminated textile fabrics; textile articles for industrial use	86	79	0.2	0.2	-10.7	0.0	-8.1	0.0
60	Knitted or crocheted fabrics	65	65	0.1	0.1	-3.2	0.0	0.4	0.0
500	Ores and metals	4 463	3 906	8.9	8.2	-13.7	-1.2	-12.5	-1.1
72	Iron and steel	1 797	1 575	3.6	3.3	-14.6	-0.5	-12.4	-0.4
73	Articles of iron or steel	778	677	1.6	1.4	-13.0	-0.2	-13.0	-0.2
74	Copper and articles thereof	569	479	1.1	1.0	-16.8	-0.2	-16.0	-0.2
76	Aluminium and articles thereof	555	461	1.1	1.0	-18.0	-0.2	-16.9	-0.2
83	Miscellaneous articles of base metal	207	201	0.4	0.4	-3.9	0.0	-2.8	0.0
71	Natural/cultured pearls, precious stones, precious metals and articles thereof; imitation jewellery; coin	175	148	0.4	0.3	-14.5	-0.1	-15.2	-0.1
82	Tools, implements, cutlery, spoons and forks, of base metal; parts thereof of base metal	143	140	0.3	0.3	-1.5	0.0	-1.8	0.0
25	Salt; sulphur; earths and stone; plastering materials, lime and cement	116	109	0.2	0.2	-11.6	0.0	-5.6	0.0
600	Machinery [4]	7 527	6 897	15.1	14.5	-10.0	-1.5	-8.4	-1.3
84	Nuclear reactors, boilers, machinery and mechanical appliances; parts thereof	3 820	3 489	7.7	7.4	-10.8	-0.9	-8.7	-0.7
85	Electrical machinery and equipment; sound recorders/reproducers; parts and accessories thereof	3 708	3 408	7.4	7.2	-9.0	-0.7	-8.1	-0.6
700	Transport equipment [5]	5 429	4 030	10.9	8.5	-31.8	-3.8	-25.8	-2.8
87	Vehicles other than railway or tramway rolling stock, and parts and accessories thereof	5 171	3 740	10.4	7.9	-28.2	-3.0	-27.7	-2.9
88	Aircraft, spacecraft, and parts thereof	202	260	0.4	0.5	7.7	0.0	28.7	0.1
800	Other manufactured goods	2 602	2 378	5.2	5.0	-9.2	-0.5	-8.6	-0.4
90	Optical/photographic/cinematographic/measuring/checking/precision/medical/surgical instruments and apparatus	857	817	1.7	1.7	-5.5	-0.1	-4.7	-0.1
94	Furniture, lamps & lighting fittings, nes.; illuminated signs/nameplates and the like; prefab. buildings	665	573	1.3	1.2	-12.4	-0.2	-13.9	-0.2
70	Glass and glassware	281	239	0.6	0.5	-12.0	-0.1	-14.7	-0.1
95	Toys, games and sports requisites; parts and accessories thereof	275	209	0.6	0.4	-23.4	-0.1	-24.0	-0.1
96	Miscellaneous manufactured articles	80	186	0.2	0.4	110.5	0.2	132.6	0.2
68	Articles of stone, plaster, cement, asbestos, mica or similar materials	145	122	0.3	0.3	-14.0	0.0	-15.9	0.0
91	Clocks and watches and parts thereof	109	105	0.2	0.2	-5.4	0.0	-3.0	0.0
69	Ceramic products	100	82	0.2	0.2	-23.5	-0.1	-18.6	0.0

Memo:

Total without Energy Products	41 188	37 523	82.5	79.1	-10.4	-8.7	-8.9	-7.3
-------------------------------	--------	--------	------	------	-------	------	------	------

Source: GEE, based on data on International Trade statistics from Statistics Portugal (most up-to-date versions available). Estimates for operators under the assimilation threshold and non-responses are included in Intra-EU trade.

Notes:

Sum of imports from EU and imports from third countries.

Composition by Group of Products - 000 (Chap. 01 to 24 of CN) - 100 (Chap. 27) - 200 (Chap. 28 to 40) - 300 (Chap. 41 to 49) - 400 (Chap. 50 to 67) - 500 (Chap. 25, 26, 71 to 83) - 600 (Chap. 84 and 85) - 700 (Chap. 86 to 89) - 800 (Chap. 68 to 70 and 90 to 99).

[1] 12 months ending in October 2012

[2] (Nov 11 - Oct 12) / (Nov 10 - Oct 11) x 100 - 100

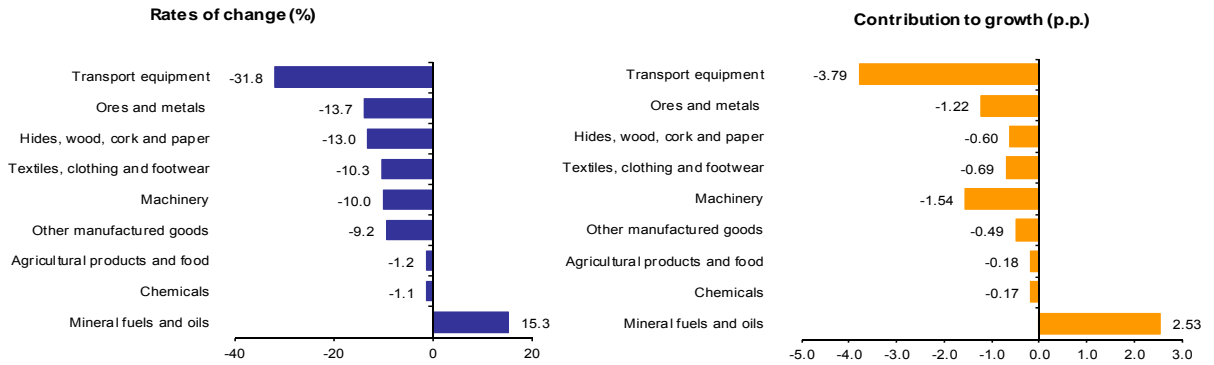
[3] Contribution to the growth rate of exports, shift share analysis: (rate of change) x (weight in the previous period) x 100.

[4] Does not include tractors.

[5] Includes tractors.

Chart 4 - Growth rates of Portuguese Imports (Intra + Extra-EU) of goods by Group of Products and contribution to growth

Previous 12 months ending in October 2012



Source: Table 12 - Portuguese Imports of goods by Groups of Products.

Table 11 - Imports of goods originating from selected markets

Preliminary data version of January to October 2012

Country of Origin	Intra + Extra-EU (Cif)		Structure (%)		Growth rates and contributions to growth			
	jan-oct		jan-oct		Last 12 months ^[1]		jan-oct	
	2011	2012	2011	2012	y.o.y., % ^[2]	Contrib. p.p. ^[3]	y.o.y., %	Contrib. p.p. ^[3]
TOTAL	49 918	47 436	100.0	100.0	-6.2	-6.2	-5.0	-5.0
INTRA EU (27)	36 690	33 931	73.5	71.5	-9.4	-7.0	-7.5	-5.5
of which:								
EU-15	35 428	32 639	71.0	68.8	-9.7	-7.0	-7.9	-5.6
Spain	15 985	14 997	32.0	31.6	-7.1	-2.3	-6.2	-2.0
Germany	6 195	5 480	12.4	11.6	-17.1	-2.3	-11.6	-1.4
France	3 370	3 088	6.8	6.5	-9.0	-0.6	-8.4	-0.6
Italy	2 723	2 480	5.5	5.2	-9.8	-0.5	-8.9	-0.5
Netherlands	2 412	2 315	4.8	4.9	-6.4	-0.3	-4.0	-0.2
United Kingdom	1 690	1 409	3.4	3.0	-19.5	-0.7	-16.7	-0.6
Belgium	1 264	1 188	2.5	2.5	-6.5	-0.2	-6.0	-0.2
Sweden	526	484	1.1	1.0	-6.9	-0.1	-8.0	-0.1
Ireland	457	467	0.9	1.0	5.8	0.1	2.1	0.0
Enlargement	1 261	1 292	2.5	2.7	-0.1	0.0	2.4	0.1
EXTRA EU (27)	13 228	13 505	26.5	28.5	3.4	0.9	2.1	0.6
of which:								
Nigeria	1 422	848	2.8	1.8	-41.5	-1.1	-40.4	-1.2
China	1 290	1 167	2.6	2.5	-10.3	-0.3	-9.5	-0.2
Brazil	1 289	1 203	2.6	2.5	-8.4	-0.2	-6.7	-0.2
Angola	876	1 604	1.8	3.4	103.8	1.6	83.0	1.5
United States	993	809	2.0	1.7	-17.1	-0.3	-18.5	-0.4
Saudi Arabia	732	826	1.5	1.7	30.1	0.4	12.8	0.2
Kazakhstan	681	611	1.4	1.3	5.2	0.1	-10.2	-0.1
Algeria	768	553	1.5	1.2	-34.6	-0.5	-28.1	-0.4
Russian Federation	470	431	0.9	0.9	1.2	0.0	-8.2	-0.1
India	415	279	0.8	0.6	-31.6	-0.3	-32.9	-0.3
Norway	368	134	0.7	0.3	-56.8	-0.4	-63.6	-0.5
Switzerland	305	277	0.6	0.6	-8.7	-0.1	-9.0	-0.1
Japan	286	258	0.6	0.5	-8.6	0.0	-9.9	-0.1
Memo:								
OPEC ^[4]	3 981	4 466	8.0	9.4	13.2	1.0	12.2	1.0
EFTA	691	430	1.4	0.9	-33.5	-0.4	-37.8	-0.5
ACPOL ^[5]	911	1 626	1.8	3.4	98.0	1.6	78.6	1.4

Source: GEE, based on data on International Trade statistics from Statistics Portugal (most up-to-date versions available). Estimates for operators under the assimilation threshold and non-responses are included in Intra-EU trade.

Notes:

Countries ranked in descending order of value in 2011.

[1] 12 months ending in October 2012

[2] (nov 11-oct 12)/(nov 10-oct 11) x 100 - 100

[3] Contributions to growth, shift share analysis: (rate of change) x (weight in the previous period) ÷ 100.

[4] Includes Angola.

[5] African Countries of Portuguese Official Language

Table 12 - Portuguese Imports by Group of Products (Extra-EU)
Preliminary data version of January to October 2012

Group of Products	January to October		y.o.y., (%)		Structure (%)		
	2011	2012	Last 12 months ^[1]	Jan-Oct 12/11	Last 12 months ^[1]	Jan-Oct	
			2011	2012	2011	2012	
Total Imports	13 228	13 505	3.4	2.1	100.0	100.0	100.0
000 Agricultural products and food	1 811	1 629	-7.6	-10.1	12.3	13.7	12.1
100 Mineral fuels and oils	6 660	7 653	18.3	14.9	56.3	50.3	56.7
200 Chemicals	1 101	1 110	0.6	0.8	8.1	8.3	8.2
300 Hides, wood, cork and paper	346	264	-23.7	-23.8	2.0	2.6	2.0
400 Textiles, clothing and footwear	703	554	-21.8	-21.2	4.2	5.3	4.1
500 Ores and metals	715	509	-31.1	-28.8	3.7	5.4	3.8
600 Machinery ^[2]	1 103	1 048	-5.6	-5.0	7.9	8.3	7.8
700 Transport equipment ^[3]	430	451	0.3	5.0	3.2	3.2	3.3
800 Other manufactured goods	359	288	-18.1	-19.8	2.2	2.7	2.1
Memo:							
Total without Energy Products	6 568	5 852	-11.0	-10.9	43.7	49.7	43.3

Source: GEE, based on data on International Trade statistics from Statistics Portugal (most up-to-date versions available).

Notes:

Composition by Group of Products - 000 (Chap. 01 to 24 of CN) - 100 (Chap. 27) - 200 (Chap. 28 to 40) - 300 (Chap. 41 to 49) - 400 (Chap. 50 to 67) - 500 (Chap. 25, 26, 71 to 83) - 600 (Chap. 84 and 85) - 700 (Chap. 86 to 89) - 800 (Chap. 68 to 70 and 90 to 99).

[1] 12 months ending in October 2012

[2] Does not include farm tractors.

[3] Includes farm tractors.

Table 13 - Imports of goods from selected markets
Preliminary data version of January to October 2012

Country of Origin	Jan-Oct		Structure (%)				y.o.y., %	
	2011	2012	Annual		Jan-Oct		Last 12 months ^[1]	Jan-Oct 12/11
			2006	2011	2011	2012		
EXTRA EU(27)	13 228	13 505	100.0	100.0	100.0	100.0	3.4	2.1
of which:								
Nigeria	1 422	848	6.0	9.8	10.7	6.3	-41.5	-40.4
China	1 290	1 167	6.0	9.6	9.7	8.6	-10.3	-9.5
Brazil	1 289	1 203	9.5	9.4	9.7	8.9	-8.4	-6.7
Angola	876	1 604	0.4	7.5	6.6	11.9	103.8	83.0
United States	993	809	6.0	7.3	7.5	6.0	-17.1	-18.5
Saudi Arabia	732	826	4.1	5.9	5.5	6.1	30.1	12.8
Kazakhstan	681	611	2.6	5.5	5.1	4.5	5.2	-10.2
Algeria	768	553	6.9	5.0	5.8	4.1	-34.6	-28.1
Russian Federation	470	431	5.0	3.6	3.6	3.2	1.2	-8.2
India	415	279	1.8	3.0	3.1	2.1	-31.6	-32.9
Norway	368	134	5.3	2.7	2.8	1.0	-56.8	-63.6
Switzerland	305	277	2.8	2.3	2.3	2.1	-8.7	-9.0
Japan	286	258	4.3	2.2	2.2	1.9	-8.6	-9.9
Memo:								
OPEC ^[2]	3 981	4 466	27.2	29.5	30.1	33.1	13.2	12.2
EFTA	691	430	8.3	5.1	5.2	3.2	-33.5	-37.8
ACPOL ^[3]	911	1 626	0.7	7.9	6.9	12.0	98.0	78.6

Source: GEE, based on data on International Trade statistics from Statistics Portugal (most up-to-date versions available).

Notes:

Countries ranked in descending order of value in 2011.

[1] (Nov 11-Oct 12)/(Nov 10-Oct 11) x 100 - 100

[2] Includes Angola.

[3] African Countries of Portuguese Official Language

By geographical and economic areas

**Table 14 - Portuguese International trade
by geographical and economic areas (Intra + Extra-EU)**

Period of assessment: january to october

Geographic/Economic Areas Main Countries	IMPORTS (Cif) ^[1]				EXPORTS (Fob) ^[2]				Coverage (fob/cif) 2012	Trade Balance (fob-cif)	
	2011	2012	Rate of Change %	Struct. 2012 %	2011	2012	Rate of Change %	Struct. 2012 %		2011	2012
	WORLD	49 917 774	47 436 058	-5.0	100.0	35 669 264	38 216 902	7.1		100.0	80.6
INTRA EU (27)	36 689 720	33 931 117	-7.5	71.5	26 773 370	27 209 397	1.6	71.2	80.2	-9 916 351	-6 721 720
France	3 370 017	3 087 692	-8.4	6.5	4 383 935	4 528 144	3.3	11.8	146.7	1 013 917	1 440 451
Netherlands	2 412 123	2 315 081	-4.0	4.9	1 426 234	1 602 435	12.4	4.2	69.2	-985 890	-712 646
Germany	6 195 138	5 479 573	-11.6	11.6	4 900 611	4 761 082	-2.8	12.5	86.9	-1 294 527	-718 491
Italy	2 722 805	2 479 860	-8.9	5.2	1 327 498	1 381 904	4.1	3.6	55.7	-1 395 307	-1 097 956
United Kingdom	1 690 033	1 408 640	-16.7	3.0	1 869 512	1 979 639	5.9	5.2	140.5	179 478	570 999
Ireland	457 256	467 087	2.1	1.0	105 051	113 610	8.1	0.3	24.3	-352 204	-353 476
Denmark	249 140	212 300	-14.8	0.4	223 695	252 163	12.7	0.7	118.8	-25 444	39 863
Greece	106 946	96 726	-9.6	0.2	96 061	277 841	189.2	0.7	287.2	-10 886	181 115
Spain	15 985 337	14 997 266	-6.2	31.6	9 003 820	8 574 392	-4.8	22.4	57.2	-6 981 517	-6 422 874
Belgium	1 264 434	1 188 102	-6.0	2.5	1 104 597	1 192 563	8.0	3.1	100.4	-159 836	4 462
Luxembourg	55 643	64 150	15.3	0.1	50 965	49 465	-2.9	0.1	77.1	-4 678	-14 685
Sweden	525 904	484 012	-8.0	1.0	372 995	364 985	-2.1	1.0	75.4	-152 909	-119 027
Finland	130 838	121 426	-7.2	0.3	194 390	200 015	2.9	0.5	164.7	63 552	78 589
Austria	262 801	237 354	-9.7	0.5	199 330	216 284	8.5	0.6	91.1	-63 471	-21 070
Malta	16 408	17 231	5.0	0.0	11 826	10 781	-8.8	0.0	62.6	-4 581	-6 450
Estonia	8 010	11 679	45.8	0.0	12 622	19 546	54.9	0.1	167.4	4 612	7 867
Latvia	2 942	5 803	97.3	0.0	10 222	15 052	47.2	0.0	259.4	7 280	9 249
Lithuania	54 713	50 215	-8.2	0.1	18 462	18 318	-0.8	0.0	36.5	-36 250	-31 897
Poland	335 736	345 221	2.8	0.7	332 305	337 283	1.5	0.9	97.7	-3 431	-7 938
Czech Republic	315 865	266 841	-15.5	0.6	239 261	278 137	16.2	0.7	104.2	-76 604	11 297
Slovakia	98 073	105 615	7.7	0.2	76 775	74 181	-3.4	0.2	70.2	-21 297	-31 435
Hungary	219 276	210 984	-3.8	0.4	105 076	134 433	27.9	0.4	63.7	-114 200	-76 552
Romania	107 292	125 009	16.5	0.3	190 059	229 997	21.0	0.6	184.0	82 767	104 988
Bulgaria	69 285	122 002	76.1	0.3	48 605	59 033	21.5	0.2	48.4	-20 681	-62 969
Slovenia	32 149	29 578	-8.0	0.1	22 064	30 285	37.3	0.1	102.4	-10 085	706
Cyprus	1 500	1 642	9.4	0.0	28 852	18 591	-35.6	0.0	1132.3	27 351	16 949
OTHERS	55	30	-46.3	0.0	418 546	489 240	16.9	1.3	1 651 275.5	418 491	489 210
EXTRA EU (27)	13 228 054	13 504 940	2.1	28.5	8 895 895	11 007 504	23.7	28.8	81.5	-4 332 160	-2 497 436
of which:											
1-EUROPE	1 402 987	1 266 666	-9.7	2.7	1 009 289	1 180 388	17.0	3.1	93.2	-393 697	-86 278
EFTA	691 227	429 859	-37.8	0.9	392 662	433 666	10.4	1.1	100.9	-298 565	3 807
Iceland	17 540	18 351	4.6	0.0	3 227	5 926	83.6	0.0	32.3	-14 313	-12 425
Norway	368 262	133 906	-63.6	0.3	76 848	90 151	17.3	0.2	67.3	-291 414	-43 755
Switzerland	304 913	277 371	-9.0	0.6	312 169	337 306	8.1	0.9	121.6	7 256	59 935
OTHERS	711 760	836 807	17.6	1.8	616 628	746 722	21.1	2.0	89.2	-95 132	-90 085
Turkey	87 492	99 211	13.4	0.2	252 647	304 312	20.4	0.8	306.7	165 155	205 102
Russian Federation	469 618	430 875	-8.2	0.9	117 314	153 772	31.1	0.4	35.7	-352 304	-277 103
Croatia	8 114	3 767	-53.6	0.0	12 944	15 764	21.8	0.0	418.4	4 830	11 997
2-AFRICA	3 791 645	4 651 095	22.7	9.8	3 536 441	4 372 684	23.6	11.4	94.0	-255 204	-278 411
MAGHREB	909 578	752 075	-17.3	1.6	750 924	834 412	11.1	2.2	110.9	-158 654	82 336
Morocco	118 326	137 572	16.3	0.3	323 120	395 382	22.4	1.0	287.4	204 794	257 809
Algeria	768 166	552 627	-28.1	1.2	309 246	344 506	11.4	0.9	62.3	-458 920	-208 121
Tunisia	23 087	61 876	168.0	0.1	118 558	94 525	-20.3	0.2	152.8	95 471	32 648
ACPOL ^[3]	910 586	1 626 356	78.6	3.4	2 310 138	2 968 409	28.5	7.8	182.5	1 399 552	1 342 053
Cape Verde	8 107	7 863	-3.0	0.0	212 321	183 421	-13.6	0.5	2332.7	204 214	175 558
Guinea-Bissau	220	37	-83.2	0.0	48 915	60 074	22.8	0.2	162920.4	48 696	60 037
Sao Tome and Principe	242	233	-3.6	0.0	37 858	38 589	1.9	0.1	16534.2	37 616	38 356
Angola	876 498	1 603 966	83.0	3.4	1 836 102	2 448 369	33.3	6.4	152.6	959 604	844 403
Mozambique	25 520	14 257	-44.1	0.0	174 942	237 956	36.0	0.6	1669.1	149 423	223 699
OTHERS	1 971 480	2 272 664	15.3	4.8	475 379	569 864	19.9	1.5	25.1	-1 496 101	-1 702 800
Libyan Arab Jamahiriya	13 639	273 490	1905.3	0.6	10 938	17 684	61.7	0.0	6.5	-2 700	-255 806
Egypt	81 561	135 042	65.6	0.3	63 567	73 493	15.6	0.2	54.4	-17 994	-61 549
Côte d'Ivoire	13 539	20 736	53.2	0.0	12 411	12 750	2.7	0.0	61.5	-1 127	-7 987
Nigeria	1 421 780	847 541	-40.4	1.8	69 219	82 068	18.6	0.2	9.7	-1 352 561	-765 473
South Africa	88 981	69 363	-22.0	0.1	70 347	84 754	20.5	0.2	122.2	-18 634	15 390

(continues)

Period of assessment: january to october

Geographic/Economic Areas Main Countries	IMPORTS (Cif) ^[1]				EXPORTS (Fob) ^[2]				Coverage (fob/cif) 2012	Trade Balance (fob-cif)	
	2011	2012	Rate of Change %	Struct. 2012 %	2011	2012	Rate of Change %	Struct. 2012 %		2011	2012
3-AMERICA	3 372 586	2 945 207	-12.7	6.2	2 582 270	3 032 113	17.4	7.9	103.0	-790 315	86 906
NAFTA	1 386 418	1 068 960	-22.9	2.3	1 763 010	1 923 536	9.1	5.0	179.9	376 592	854 576
United States	992 905	808 737	-18.5	1.7	1 191 818	1 587 316	33.2	4.2	196.3	198 912	778 579
Canada	179 913	117 803	-34.5	0.2	182 523	160 328	-12.2	0.4	136.1	2 610	42 525
Mexico	213 600	142 420	-33.3	0.3	388 669	175 892	-54.7	0.5	123.5	175 069	33 472
MERCOSUL	1 562 785	1 365 872	-12.6	2.9	525 633	646 994	23.1	1.7	47.4	-1 037 152	-718 879
Brazil	1 288 606	1 202 551	-6.7	2.5	468 720	578 342	23.4	1.5	48.1	-819 886	-624 209
Argentina	144 087	76 091	-47.2	0.2	38 427	44 674	16.3	0.1	58.7	-105 660	-31 417
OTHERS	423 383	510 375	20.5	1.1	293 627	461 584	57.2	1.2	90.4	-129 756	-48 791
Honduras	10 828	7 100	-34.4	0.0	1 886	1 522	-19.3	0.0	21.4	-8 942	-5 578
Costa Rica	45 444	29 081	-36.0	0.1	4 938	3 596	-27.2	0.0	12.4	-40 506	-25 485
Cuba	5 220	31 231	498.3	0.1	18 797	35 836	90.6	0.1	114.7	13 577	4 605
Colombia	189 767	238 956	25.9	0.5	15 952	24 568	54.0	0.1	10.3	-173 815	-214 388
Venezuela	13 595	77 225	468.0	0.2	124 236	248 395	99.9	0.6	321.7	110 641	171 170
Ecuador	19 419	11 197	-42.3	0.0	8 344	7 839	-6.0	0.0	70.0	-11 075	-3 358
Chile	46 187	21 997	-52.4	0.0	70 373	74 457	5.8	0.2	338.5	24 186	52 460
4-ASIA	4 611 017	4 612 580	0.0	9.7	1 196 533	1 733 726	44.9	4.5	37.6	-3 414 484	-2 878 854
MIDDLE EAST	1 090 069	1 610 499	47.7	3.4	335 715	439 197	30.8	1.1	27.3	-754 354	-1 171 302
Iraq	0	175 980	42100337.8	0.4	2 280	5 672	148.8	0.0	3.2	2 280	-170 308
Iran, Islamic Republic of	3 859	4 218	9.3	0.0	30 821	12 324	-60.0	0.0	292.2	26 963	8 106
Israel	81 969	93 683	14.3	0.2	62 411	84 379	35.2	0.2	90.1	-19 558	-9 305
Saudi Arabia	732 429	826 134	12.8	1.7	73 432	108 072	47.2	0.3	13.1	-658 997	-718 062
United Arab Emirates	66 855	13 064	-80.5	0.0	73 009	82 535	13.0	0.2	631.8	6 154	69 471
ASEAN	383 252	343 073	-10.5	0.7	118 211	118 413	0.2	0.3	34.5	-265 041	-224 659
Thailand	98 186	87 132	-11.3	0.2	13 667	17 541	28.4	0.0	20.1	-84 520	-69 591
Indonesia	71 347	45 801	-35.8	0.1	9 712	14 095	45.1	0.0	30.8	-61 634	-31 706
Malaysia	96 761	68 673	-29.0	0.1	10 069	27 236	170.5	0.1	39.7	-86 692	-41 436
Singapore	19 220	16 722	-13.0	0.0	69 632	47 390	-31.9	0.1	283.4	50 412	30 668
Philippines	15 000	11 828	-21.1	0.0	5 061	4 599	-9.1	0.0	38.9	-9 939	-7 229
OTHERS	3 137 697	2 659 008	-15.3	5.6	742 607	1 176 115	58.4	3.1	44.2	-2 395 090	-1 482 893
Timor-Leste	880	226	-74.3	0.0	3 603	6 148	70.6	0.0	2717.2	2 722	5 922
Pakistan	71 860	51 279	-28.6	0.1	12 798	12 258	-4.2	0.0	23.9	-59 062	-39 022
India	414 859	278 539	-32.9	0.6	76 882	80 133	4.2	0.2	28.8	-337 977	-198 406
China	1 289 501	1 167 366	-9.5	2.5	278 546	696 342	150.0	1.8	59.7	-1 010 955	-471 023
Korea, Republic of	248 234	143 459	-42.2	0.3	43 568	66 048	51.6	0.2	46.0	-204 666	-77 411
Japan	285 980	257 782	-9.9	0.5	155 581	158 304	1.8	0.4	61.4	-130 398	-99 477
Taiwan	81 747	87 406	6.9	0.2	58 588	19 853	-66.1	0.1	22.7	-23 159	-67 552
Hong Kong	23 257	22 281	-5.3	0.0	90 787	105 772	16.5	0.3	474.7	67 260	83 492
Macao	217	361	66.5	0.0	12 223	18 458	51.0	0.0	5113.9	12 006	18 097
5-AUSTR,OC,P. REG	37 311	28 972	-22.3	0.1	69 322	73 271	5.7	0.2	252.9	32 011	44 298
Australia	11 884	9 744	-18.0	0.0	59 569	63 808	7.1	0.2	654.8	47 686	54 064
New Zealand	24 728	17 380	-29.7	0.0	7 308	7 624	4.3	0.0	43.9	-17 421	-9 756
6-OTHERS	12 508	419	-96.6	0.0	502 038	615 323	22.6	1.6	146831.9	489 530	614 904
Stores and provisions (Extra EU)	0	0	0.0	0.0	410 097	518 951	26.5	1.4	0.0	410 097	518 951
Countries/territories not specif. (Extra EU)	12 508	419	-96.6	0.0	91 941	96 372	4.8	0.3	22996.8	79 432	95 953

Memo:

Intra EU-15	35 428 471	32 639 297	-7.9	68.8	25 677 240	25 983 762	1.2	68.0	79.6	-9 751 231	-6 655 536
Intra-enlargement	1 261 249	1 291 820	2.4	2.7	1 096 130	1 225 636	11.8	3.2	94.9	-165 120	-66 184
OECD (excl. EU)	2 863 607	2 141 844	-25.2	4.5	2 806 712	3 115 852	11.0	8.2	145.5	-56 895	974 008
OPEC	3 981 116	4 465 756	12.2	9.4	2 562 049	3 396 779	32.6	8.9	76.1	-1 419 067	-1 068 977
ACP ^[4]	2 849 018	3 577 661	25.6	7.5	2 738 621	3 499 787	27.8	9.2	97.8	-110 397	-77 874
CPLP ^[5]	2 200 073	2 829 133	28.6	6.0	2 782 461	3 552 899	27.7	9.3	125.6	582 388	723 765
CIS ^[6]	1 379 941	1 720 153	24.7	3.6	150 566	193 872	28.8	0.5	11.3	-1 229 375	-1 526 281
Mashrak	91 331	141 738	55.2	0.3	119 335	126 735	6.2	0.3	89.4	28 004	-15 003
EUROMED	1 170 370	1 086 707	-7.1	2.3	1 185 318	1 349 838	13.9	3.5	124.2	14 948	263 130
Latin American Count.	2 143 736	1 963 131	-8.4	4.1	1 197 700	1 274 248	6.4	3.3	64.9	-946 036	-688 883
Cent. Amer. Common Market	64 960	51 193	-21.2	0.1	23 502	24 529	4.4	0.1	47.9	-41 458	-26 663
Andean Community	249 836	348 797	39.6	0.7	163 278	303 130	85.7	0.8	86.9	-86 558	-45 667
ASEM (relac. Euro-Asia)	2 693 685	2 241 498	-16.8	4.7	685 609	1 131 564	65.0	3.0	50.5	-2 008 076	-1 109 934
EDA (Econ Dinam Asian)	567 674	425 671	-25.0	0.9	286 310	283 841	-0.9	0.7	66.7	-281 364	-141 831
China+H. Kong+Macao	1 313 245	1 190 007	-9.4	2.5	381 556	820 572	115.1	2.1	69.0	-931 688	-369 435

Source: GEE, based on data on International Trade statistics from Statistics Portugal (most up-to-date versions available). Estimates for operators under the assimilation threshold and non-responses are included in Intra-EU trade.

Notes:

- [1] Sum of Imports from EU and Imports from third countries.
- [2] Sum of Exports to EU and Exports to third countries.
- [3] African Countries of Portuguese Official Language
- [4] African, Caribbean and Pacific Group of States
- [5] Community of Portuguese Language Countries
- [6] Commonwealth of Independent States

**Table 15 - International Trade of Portuguese goods
by geographical and economic areas (Intra + Extra-EU)
Imports [1] - Contributions of the main partners to the global growth rate**

Period of assessment: January to October

Countries and regions	1000 Euros				Structure (%)		Growth rates and contributions to growth			
	2011	jan-oct		jan-oct		Last 12 months ^[2]		jan-oct		
		Rank.	2011	2012	2011	2012	y.o.y., % ^[3]	Contrib. p.p. ^[4]	y.o.y., %	Contrib. p.p. ^[4]
	WORLD	59 242 900	49 917 774	47 436 058	100.00	100.00	-6.15	-6.15	-4.97	-4.97
INTRA EU(27)	43 624 091	36 689 720	33 931 117	73.50	71.53	-9.41	-7.02	-7.52	-5.53	
Spain	19 116 719	15 985 337	14 997 266	32.02	31.62	-7.12	-2.30	-6.18	-1.98	
Germany	7 332 379	6 195 138	5 479 573	12.41	11.55	-17.07	-2.25	-11.55	-1.43	
France	4 008 515	3 370 017	3 087 692	6.75	6.51	-8.96	-0.61	-8.38	-0.57	
Italy	3 234 950	2 722 805	2 479 860	5.45	5.23	-9.79	-0.54	-8.92	-0.49	
Netherlands	2 829 471	2 412 123	2 315 081	4.83	4.88	-6.42	-0.31	-4.02	-0.19	
United Kingdom	1 973 407	1 690 033	1 408 640	3.39	2.97	-19.48	-0.68	-16.65	-0.56	
Belgium	1 504 544	1 264 434	1 188 102	2.53	2.50	-6.49	-0.16	-6.04	-0.15	
Sweden	623 728	525 904	484 012	1.05	1.02	-6.87	-0.07	-7.97	-0.08	
Ireland	574 078	457 256	467 087	0.92	0.98	5.80	0.05	2.15	0.02	
Poland	402 157	335 736	345 221	0.67	0.73	4.04	0.03	2.83	0.02	
Czech Republic	362 251	315 865	266 841	0.63	0.56	-20.28	-0.13	-15.52	-0.10	
Austria	314 202	262 801	237 354	0.53	0.50	-8.24	-0.04	-9.68	-0.05	
Denmark	292 781	249 140	212 300	0.50	0.45	-15.51	-0.08	-14.79	-0.07	
Hungary	259 329	219 276	210 984	0.44	0.44	-4.59	-0.02	-3.78	-0.02	
Finland	150 959	130 838	121 426	0.26	0.26	-10.63	-0.03	-7.19	-0.02	
Romania	125 131	107 292	125 009	0.21	0.26	9.02	0.02	16.51	0.04	
Greece	125 041	106 946	96 726	0.21	0.20	-9.31	-0.02	-9.56	-0.02	
Slovakia	115 158	98 073	105 615	0.20	0.22	0.57	0.00	7.69	0.02	
Bulgaria	81 930	69 285	122 002	0.14	0.26	81.78	0.10	76.09	0.11	
Luxembourg	62 106	55 643	64 150	0.11	0.14	9.47	0.01	15.29	0.02	
Lithuania	59 941	54 713	50 215	0.11	0.11	-4.25	0.00	-8.22	-0.01	
Slovenia	39 381	32 149	29 578	0.06	0.06	-7.22	0.00	-8.00	-0.01	
Malta	19 271	16 408	17 231	0.03	0.04	2.80	0.00	5.02	0.00	
Estonia	9 101	8 010	11 679	0.02	0.02	14.77	0.00	45.81	0.01	
Cyprus	4 282	1 500	1 642	0.00	0.00	173.62	0.00	9.43	0.00	
Latvia	3 224	2 942	5 803	0.01	0.01	43.38	0.00	97.26	0.01	
OTHERS	55	55	30	0.00	0.00	- 65.0	0.00	- 46.3	0.00	
EXTRA EU(27)	15 618 809	13 228 054	13 504 940	26.50	28.47	3.42	0.87	2.09	0.55	
of which:										
1-EUROPE	1 690 669	1 402 987	1 266 666	2.81	2.67	-6.00	-0.16	-9.72	-0.27	
EFTA	801 524	691 227	429 859	1.38	0.91	-33.46	-0.45	-37.81	-0.52	
Norway	417 264	368 262	133 906	0.74	0.28	-56.81	-0.40	-63.64	-0.47	
Switzerland	364 520	304 913	277 371	0.61	0.58	-8.70	-0.05	-9.03	-0.06	
Iceland	19 147	17 540	18 351	0.04	0.04	7.42	0.00	4.62	0.00	
OTHERS	889 145	711 760	836 807	1.43	1.76	20.50	0.29	17.57	0.25	
Russian Federation	562 810	469 618	430 875	0.94	0.91	1.16	0.01	-8.25	-0.08	
Ukraine	164 273	106 651	248 127	0.21	0.52	124.99	0.28	132.65	0.28	
Turkey	103 005	87 492	99 211	0.18	0.21	-16.15	-0.04	13.39	0.02	
Former Yugoslav Republic of Macedonia	22 135	19 901	12 537	0.04	0.03	-31.17	-0.01	-37.01	-0.01	
2-AFRICA	4 361 010	3 791 645	4 651 095	7.60	9.80	19.10	1.38	22.67	1.72	
MAGHREB	941 198	909 578	752 075	1.82	1.59	-23.79	-0.40	-17.32	-0.32	
Algeria	776 204	768 166	552 627	1.54	1.16	-34.63	-0.49	-28.06	-0.43	
Morocco	139 002	118 326	137 572	0.24	0.29	11.07	0.03	16.27	0.04	
Tunisia	25 992	23 087	61 876	0.05	0.13	129.79	0.06	168.02	0.08	
ACPOL^[5]	1 229 985	910 586	1 626 356	1.82	3.43	98.00	1.59	78.61	1.43	
Angola	1 177 501	876 498	1 603 966	1.76	3.38	103.80	1.60	83.00	1.46	
Mozambique	41 983	25 520	14 257	0.05	0.03	-18.79	-0.01	-44.13	-0.02	
Cape Verde	9 971	8 107	7 863	0.02	0.02	1.98	0.00	-3.01	0.00	
Sao Tome and Principe	270	242	233	0.00	0.00	-11.22	0.00	-3.64	0.00	
Guinea-Bissau	261	220	37	0.00	0.00	-73.60	0.00	-83.20	0.00	
OTHERS	2 189 828	1 971 480	2 272 664	3.95	4.79	5.01	0.20	15.28	0.60	
Nigeria	1 528 659	1 421 780	847 541	2.85	1.79	-41.48	-1.12	-40.39	-1.15	
Equatorial Guinea	138 977	83 987	468 566	0.17	0.99	521.64	0.73	457.90	0.77	
South Africa	97 657	88 981	69 363	0.18	0.15	-35.17	-0.07	-22.05	-0.04	
Egypt	88 088	81 561	135 042	0.16	0.28	48.68	0.08	65.57	0.11	
Cameroon	86 264	82 594	296 732	0.17	0.63	249.28	0.35	259.27	0.43	
3-AMERICA	3 862 678	3 372 586	2 945 207	6.76	6.21	-12.18	-0.79	-12.67	-0.86	
NAFTA	1 584 672	1 386 418	1 068 960	2.78	2.25	-21.41	-0.57	-22.90	-0.64	
United States	1 134 278	992 905	808 737	1.99	1.70	-17.11	-0.32	-18.55	-0.37	
Mexico	230 896	213 600	142 420	0.43	0.30	-29.33	-0.11	-33.32	-0.14	
Canada	219 498	179 913	117 803	0.36	0.25	-34.48	-0.14	-34.52	-0.12	

(continues)

Period of assessment: January to October

Countries and regions	1000 Euros				Structure (%)		Growth rates and contributions to growth			
	2011		jan-oct		jan-oct		Last 12 months ^[2]		jan-oct	
	Rank.	2011	2012	2011	2012	y.o.y., % ^[3]	Contrib. p.p. ^[4]	y.o.y., %	Contrib. p.p. ^[4]	
MERCOSUL	1 768 955	1 562 785	1 365 872	3.13	2.88	-13.61	-0.41	-12.60	-0.39	
Brazil	1 461 903	1 288 606	1 202 551	2.58	2.54	-8.42	-0.21	-6.68	-0.17	
Argentina	153 573	144 087	76 091	0.29	0.16	-47.06	-0.13	-47.19	-0.14	
OTHERS	509 052	423 383	510 375	0.85	1.08	24.21	0.19	20.55	0.17	
Colombia	246 601	189 767	238 956	0.38	0.50	41.97	0.14	25.92	0.10	
Costa Rica	54 151	45 444	29 081	0.09	0.06	-33.61	-0.03	-36.01	-0.03	
Chile	51 257	46 187	21 997	0.09	0.05	-50.32	-0.05	-52.37	-0.05	
Guyana	33 379	30 652	11 834	0.06	0.02	-61.84	-0.04	-61.39	-0.04	
Peru	28 926	25 735	20 517	0.05	0.04	-21.60	-0.01	-20.28	-0.01	
Ecuador	22 108	19 419	11 197	0.04	0.02	-36.10	-0.01	-42.34	-0.02	
4-ASIA	5 649 857	4 611 017	4 612 580	9.24	9.72	5.27	0.47	0.03	0.00	
MIDDLE EAST	1 499 849	1 090 069	1 610 499	2.18	3.40	60.41	1.26	47.74	1.04	
Saudi Arabia	914 365	732 429	826 134	1.47	1.74	30.06	0.39	12.79	0.19	
Azerbaijan	290 057	103 575	404 932	0.21	0.85	184.19	0.63	290.96	0.60	
Israel	93 796	81 969	93 683	0.16	0.20	7.69	0.01	14.29	0.02	
Qatar	88 126	61 864	61 457	0.12	0.13	40.16	0.04	-0.66	0.00	
United Arab Emirates	68 694	66 855	13 064	0.13	0.03	-78.24	-0.09	-80.46	-0.11	
Bahrain	15 394	15 390	16	0.03	0.00	-99.87	-0.03	-99.89	-0.03	
Oman	9 159	9 111	1 019	0.02	0.00	-89.58	-0.02	-88.81	-0.02	
ASEAN	454 773	383 252	343 073	0.77	0.72	-7.96	-0.06	-10.48	-0.08	
Thailand	112 487	98 186	87 132	0.20	0.18	-14.70	-0.03	-11.26	-0.02	
Malaysia	112 007	96 761	68 673	0.19	0.14	-26.10	-0.05	-29.03	-0.06	
Viet-Nam	97 020	77 899	108 190	0.16	0.23	39.35	0.06	38.88	0.06	
Indonesia	87 026	71 347	45 801	0.14	0.10	-23.64	-0.03	-35.80	-0.05	
Singapore	23 387	19 220	16 722	0.04	0.04	-7.95	0.00	-13.00	-0.01	
OTHERS	3 695 235	3 137 697	2 659 008	6.29	5.61	-12.08	-0.73	-15.26	-0.96	
China	1 499 818	1 289 501	1 167 366	2.58	2.46	-10.27	-0.26	-9.47	-0.24	
Kazakhstan	853 958	680 767	611 139	1.36	1.29	5.22	0.06	-10.23	-0.14	
India	467 213	414 859	278 539	0.83	0.59	-31.61	-0.25	-32.86	-0.27	
Japan	341 340	285 980	257 782	0.57	0.54	-8.64	-0.05	-9.86	-0.06	
Korea, Republic of	278 178	248 234	143 459	0.50	0.30	-39.90	-0.19	-42.21	-0.21	
Taiwan	96 593	81 747	87 406	0.16	0.18	3.92	0.01	6.92	0.01	
Pakistan	81 454	71 860	51 279	0.14	0.11	-27.32	-0.04	-28.64	-0.04	
Bangladesh	27 636	22 791	20 986	0.05	0.04	-5.81	0.00	-7.92	0.00	
Hong Kong	27 524	23 527	22 281	0.05	0.05	-12.51	-0.01	-5.30	0.00	
Uzbekistan	9 867	8 817	7 710	0.02	0.02	-27.98	-0.01	-12.56	0.00	
5-AUSTR,OC,P. REG	42 009	37 311	28 972	0.07	0.06	-16.65	-0.01	-22.35	-0.02	
New Zealand	26 714	24 728	17 380	0.05	0.04	-26.29	-0.01	-29.72	-0.01	
Australia	14 595	11 884	9 744	0.02	0.02	-6.54	0.00	-18.00	0.00	
Papua New Guinea	509	509	1 812	0.00	0.00	203.50	0.00	255.74	0.00	
6-OTHERS	12 586	12 508	419	0.03	0.00	-96.12	-0.02	-96.65	-0.02	
Countries/territories not specif. (Extra EU)	12 586	12 508	419	0.03	0.00	-96.12	-0.02	-96.65	-0.02	
Stores and provisions (Extra EU)	0	0	0	0.00	0.00	0.00	0.00	0.00	0.00	

Memo:

Intra EU-15	42 142 936	35 428 471	32 639 297	70.97	68.81	-9.74	-7.02	-7.87	-5.59
Intra-enlargement	1 481 155	1 261 249	1 291 820	2.53	2.72	-0.07	0.00	2.42	0.06
OECD (excl. EU)	3 294 487	2 863 607	2 141 844	5.74	4.52	-23.97	-1.34	-25.20	-1.45
OPEC	4 611 109	3 981 116	4 465 756	7.98	9.41	13.21	0.98	12.17	0.97
ACP ^[6]	3 384 453	2 849 018	3 577 661	5.71	7.54	28.42	1.50	25.58	1.46
CPLP ^[7]	2 692 914	2 200 073	2 829 133	4.41	5.96	33.62	1.38	28.59	1.26
CIS ^[8]	1 898 015	1 379 941	1 720 153	2.76	3.63	37.26	1.00	24.65	0.68
Mashrak	98 267	91 331	141 738	0.18	0.30	39.45	0.07	55.19	0.10
EUROMED	1 236 266	1 170 370	1 086 707	2.34	2.29	-15.86	-0.36	-7.15	-0.17
Latin American Count.	2 450 100	2 143 736	1 963 131	4.29	4.14	-7.78	-0.32	-8.42	-0.36
Cent. Amer. Common Market	78 206	64 960	51 193	0.13	0.11	-17.37	-0.02	-21.19	-0.03
Andean Community	313 111	249 836	348 797	0.50	0.74	49.37	0.23	39.61	0.20
ASEM (relac. Euro-Asia)	3 122 775	2 693 685	2 241 498	5.40	4.73	-16.14	-0.85	-16.79	-0.91
EDA (Econ Dinam Asian)	650 177	567 674	425 671	1.14	0.90	-24.39	-0.27	-25.01	-0.28
China+H. Kong+Macau	1 527 573	1 313 245	1 190 007	2.63	2.51	-10.31	-0.27	-9.38	-0.25

Source: GEE, based on data on International Trade statistics from Statistics Portugal (most up-to-date versions available). Estimates for operators under the assimilation threshold and non-responses are included in Intra-EU trade.

Notes:

- [1] Sum of Imports from EU and Imports from third countries.
- [2] 12 months ending in October 2012
- [3] (nov 11-oct 12)/(nov 10-oct 11) x 100 - 100
- [4] Contributions to growth, shift share analysis: (rate of change) x (weight in the previous period) ÷ 100.
- [5] African Countries of Portuguese Official Language
- [6] African, Caribbean and Pacific Group of States
- [7] Community of Portuguese Language Countries
- [8] Commonwealth of Independent States

**Table 16 - International Trade of Portuguese goods
by geographical and economic areas (Intra + Extra-EU)
Exports ^[1] - Contributions of the main partners to the global growth rate**

Period of assessment: january to october

Countries and regions	1000 Euros			Structure (%)		Growth rates and contributions to growth				
	2011	jan-oct		jan-oct		Last 12 months ^[2]		jan-oct		
		Rank.	2011	2012	2011	2012	y.o.y., % ^[3]	Contrib. p.p. ^[4]	y.o.y., %	Contrib. p.p. ^[4]
WORLD	42 870 151	35 669 264	38 216 902	100.00	100.00	7.64	7.64	7.14	7.14	
INTRA EU(27)	31 910 218	26 773 370	27 209 397	75.06	71.20	2.10	1.58	1.63	1.22	
Spain	10 679 694	1	9 003 820	8 574 392	25.24	22.44	-4.53	-1.15	-4.77	-1.20
Germany	5 811 182	2	4 900 611	4 761 082	13.74	12.46	-1.76	-0.24	-2.85	-0.39
France	5 212 785	3	4 383 935	4 528 144	12.29	11.85	4.08	0.50	3.29	0.40
United Kingdom	2 234 123	5	1 869 512	1 979 639	5.24	5.18	6.03	0.32	5.89	0.31
Netherlands	1 675 363	6	1 426 234	1 602 435	4.00	4.19	12.63	0.49	12.35	0.49
Italy	1 567 278	7	1 327 498	1 381 904	3.72	3.62	3.04	0.11	4.10	0.15
Belgium	1 350 284	9	1 104 597	1 192 563	3.10	3.12	10.47	0.32	7.96	0.25
Sweden	443 283	12	372 995	364 985	1.05	0.96	-3.17	-0.03	-2.15	-0.02
Poland	404 035	13	332 305	337 283	0.93	0.88	4.98	0.05	1.50	0.01
Czech Republic	284 756	19	239 261	278 137	0.67	0.73	16.67	0.11	16.25	0.11
Denmark	270 262	20	223 695	252 163	0.63	0.66	10.70	0.07	12.73	0.08
Finland	246 918	23	194 390	200 015	0.54	0.52	-2.72	-0.02	2.89	0.02
Austria	236 274	24	199 330	216 284	0.56	0.57	7.51	0.04	8.51	0.05
Romania	232 542	25	190 059	229 997	0.53	0.60	16.36	0.09	21.01	0.11
Greece	150 108	30	96 061	277 841	0.27	0.73	196.00	0.52	189.23	0.51
Ireland	127 840	33	105 051	113 610	0.29	0.30	11.72	0.03	8.15	0.02
Hungary	122 573	34	105 076	134 433	0.29	0.35	23.39	0.07	27.94	0.08
Slovakia	88 378	40	76 775	74 181	0.22	0.19	-4.30	-0.01	-3.38	-0.01
Luxembourg	61 038	50	50 965	49 465	0.14	0.13	-0.79	0.00	-2.94	0.00
Bulgaria	60 764	51	48 605	59 033	0.14	0.15	11.38	0.02	21.46	0.03
Cyprus	34 545	59	28 852	18 591	0.08	0.05	-34.17	-0.03	-35.57	-0.03
Slovenia	25 848	62	22 064	30 285	0.06	0.08	32.69	0.02	37.26	0.02
Malta	24 498	63	11 826	10 781	0.03	0.03	67.58	0.02	-8.84	0.00
Lithuania	23 136	65	18 462	18 318	0.05	0.05	6.60	0.00	-0.78	0.00
Estonia	15 842	72	12 622	19 546	0.04	0.05	45.97	0.02	54.86	0.02
Latvia	13 184	82	10 222	15 052	0.03	0.04	45.16	0.01	47.25	0.01
OTHERS	513 685		418 546	489 240	1.17	1.28	22.06	0.25	16.89	0.20
EXTRA EU(27)	10 959 933	8 895 895	11 007 504	24.94	28.80	24.32	6.06	23.74	5.92	
of which:										
1-EUROPE	1 226 152	1 009 289	1 180 388	2.83	3.09	19.58	0.54	16.95	0.48	
EFTA	467 025	392 662	433 666	1.10	1.13	10.50	0.11	10.44	0.11	
Switzerland	372 256	16	312 169	337 306	0.88	0.88	7.78	0.07	8.05	0.07
Norway	90 098	38	76 848	90 151	0.22	0.24	19.27	0.04	17.31	0.04
OTHERS	759 127	616 628	746 722	1.73	1.95	25.47	0.43	21.10	0.36	
Turkey	300 700	18	252 647	304 312	0.71	0.80	19.79	0.14	20.45	0.14
Gibraltar	254 395	21	192 875	230 196	0.54	0.60	36.32	0.18	19.35	0.10
Russian Federation	139 594	32	117 314	153 772	0.33	0.40	28.97	0.09	31.08	0.10
Ukraine	19 013	67	15 396	18 341	0.04	0.05	19.97	0.01	19.13	0.01
Croatia	15 357	75	12 944	15 764	0.04	0.04	25.01	0.01	21.79	0.01
2-AFRICA	4 356 844	3 536 441	4 372 684	9.91	11.44	22.83	2.29	23.65	2.34	
MAGHREB	890 782	750 924	834 412	2.11	2.18	10.41	0.22	11.12	0.23	
Morocco	389 167	15	323 120	395 382	0.91	1.03	22.12	0.20	22.36	0.20
Algeria	358 329	17	309 246	344 506	0.87	0.90	9.62	0.08	11.40	0.10
Tunisia	143 286	31	118 558	94 525	0.33	0.25	-18.06	-0.06	-20.27	-0.07
ACPOL ^[5]	2 913 046	2 310 138	2 968 409	6.48	7.77	28.04	1.85	28.49	1.85	
Angola	2 331 161	4	1 836 102	2 448 369	5.15	6.41	32.09	1.69	33.35	1.72
Cape Verde	254 089	22	212 321	183 421	0.60	0.48	-12.01	-0.07	-13.61	-0.08
Mozambique	216 982	26	174 942	237 956	0.49	0.62	38.44	0.18	36.02	0.18
Guinea-Bissau	64 268	48	48 915	60 074	0.14	0.16	30.71	0.04	22.81	0.03
Sao Tome and Principe	46 546	53	37 858	38 589	0.11	0.10	5.07	0.01	1.93	0.00
OTHERS	553 017	475 379	569 864	1.33	1.49	16.39	0.22	19.88	0.26	
South Africa	85 880	41	70 347	84 754	0.20	0.22	23.26	0.04	20.48	0.04
Nigeria	76 110	44	69 219	82 068	0.19	0.21	20.91	0.04	18.56	0.04
Egypt	71 131	47	63 567	73 493	0.18	0.19	3.05	0.01	15.62	0.03
Equatorial Guinea	41 098	55	34 888	34 873	0.10	0.09	3.55	0.00	-0.04	0.00
3-AMERICA	3 168 173	2 582 270	3 032 113	7.24	7.93	18.89	1.36	17.42	1.26	
NAFTA	2 162 946	1 763 010	1 923 536	4.94	5.03	12.31	0.60	9.11	0.45	
United States	1 496 386	8	1 191 818	1 587 316	3.34	4.15	34.25	1.14	33.18	1.11
Mexico	461 612	11	388 669	175 892	1.09	0.46	-45.41	-0.49	-54.75	-0.60
Canada	204 948	27	182 523	160 328	0.51	0.42	-10.30	-0.05	-12.16	-0.06

(continues)

Period of assessment: January to October

Countries and regions	1000 Euros				Structure (%)		Growth rates and contributions to growth			
	2011		jan-oct		jan-oct		Last 12 months ^[2]		jan-oct	
	Rank	2011	2012	2011	2012	y.o.y., % ^[3]	Contrib. p.p. ^[4]	y.o.y., %	Contrib. p.p. ^[4]	
MERCOSUL	649 230	525 633	646 994	1.47	1.69	24.52	0.36	23.09	0.34	
Brazil	583 114	10	468 720	578 342	1.31	1.51	25.03	0.33	23.39	0.31
Argentina	45 220	54	38 427	44 674	0.11	0.12	13.55	0.01	16.26	0.02
OTHERS	355 997	293 627	461 584	0.82	1.21	47.34	0.40	57.20	0.47	
Venezuela	154 201	29	124 236	248 395	0.35	0.65	89.16	0.31	99.94	0.35
Chile	80 159	43	70 373	74 457	0.20	0.19	-7.03	-0.02	5.80	0.01
Cuba	22 318	66	18 797	35 836	0.05	0.09	83.74	0.04	90.65	0.05
4-ASIA	1 505 290	1 196 533	1 733 726	3.35	4.54	44.90	1.50	44.90	1.51	
MIDDLE EAST	412 886	335 715	439 197	0.94	1.15	26.84	0.26	30.82	0.29	
Saudi Arabia	92 958	36	73 432	108 072	0.21	0.28	43.97	0.09	47.17	0.10
United Arab Emirates	90 101	37	73 009	82 535	0.20	0.22	16.61	0.03	13.05	0.03
Israel	74 490	45	62 411	84 379	0.17	0.22	30.73	0.05	35.20	0.06
Iran, Islamic Republic of	35 104	58	30 821	12 324	0.09	0.03	-56.64	-0.05	-60.01	-0.05
Lebanon	27 755	60	21 738	24 770	0.06	0.06	22.43	0.01	13.95	0.01
ASEAN	139 001	118 211	118 413	0.33	0.31	1.43	0.00	0.17	0.00	
Singapore	81 283	42	69 632	47 390	0.20	0.12	-27.65	-0.05	-31.94	-0.06
Thailand	16 047	70	13 667	17 541	0.04	0.05	28.89	0.01	28.35	0.01
Malaysia	12 253	84	10 069	27 236	0.03	0.07	154.73	0.04	170.50	0.05
Viet-Nam	12 007	86	9 497	6 373	0.03	0.02	-23.21	-0.01	-23.89	-0.01
OTHERS	953 404	742 607	1 176 115	2.08	3.08	60.29	1.24	58.38	1.22	
China	396 869	14	278 546	696 342	0.78	1.82	152.12	1.16	149.99	1.17
Japan	191 995	28	155 581	158 304	0.44	0.41	8.90	0.04	1.75	0.01
Hong Kong	111 484	35	90 787	105 772	0.25	0.28	14.53	0.04	16.51	0.04
India	89 377	39	76 882	80 133	0.22	0.21	0.52	0.00	4.23	0.01
Taiwan	61 858	49	58 588	19 853	0.16	0.05	-63.51	-0.10	-66.11	-0.11
Korea, Republic of	53 835	52	43 568	66 048	0.12	0.17	50.55	0.06	51.60	0.06
Pakistan	15 607	73	12 798	12 258	0.04	0.03	-1.30	0.00	-4.22	0.00
5-AUSTR, OC, P. REG	84 000	69 322	73 271	0.19	0.19	7.08	0.01	5.70	0.01	
Australia	72 117	46	59 569	63 808	0.17	0.17	8.17	0.01	7.11	0.01
New Zealand	9 016	94	7 308	7 624	0.02	0.02	6.07	0.00	4.33	0.00
6-DIVERSOS	619 474	502 038	615 323	1.41	1.61	25.66	0.35	22.56	0.32	
Stores and provisions (Extra EU)	516 631		410 097	518 951	1.15	1.36	29.94	0.34	26.54	0.31
Countries/territories not specif. (Extra EU)	102 843		91 941	96 372	0.26	0.25	5.38	0.01	4.82	0.01

Memo:

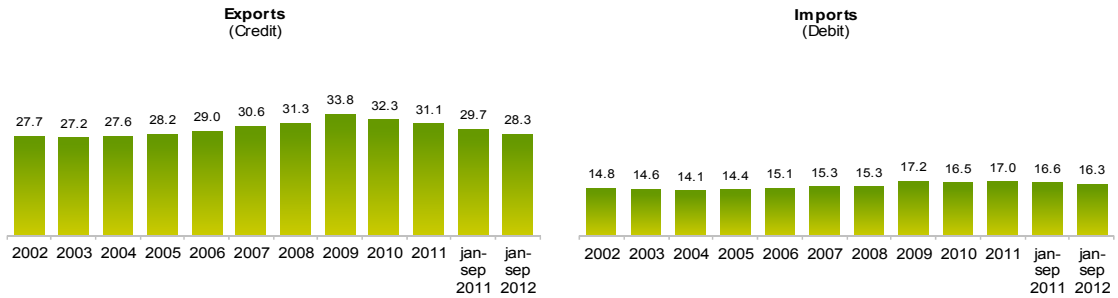
Intra EU-15	30 580 117	25 677 240	25 983 762	71.99	67.99	1.68	1.21	1.19	0.86
Intra-enlargement	1 330 100	1 096 130	1 225 636	3.07	3.21	11.93	0.37	11.81	0.36
OECD (excl. EU)	3 411 589	2 806 712	3 115 852	7.87	8.15	12.91	1.01	11.01	0.87
OPEC	3 192 832	2 562 049	3 396 779	7.18	8.89	30.53	2.23	32.58	2.34
ACP ^[6]	3 415 531	2 738 621	3 499 787	7.68	9.16	27.38	2.13	27.79	2.13
CPLP ^[7]	3 501 059	2 782 461	3 552 899	7.80	9.30	27.58	2.19	27.69	2.16
CIS ^[8]	180 030	150 566	193 872	0.42	0.51	26.91	0.11	28.76	0.12
Mashrak	140 808	119 335	126 735	0.33	0.33	-0.89	0.00	6.20	0.02
EUROMED	1 406 780	1 185 318	1 349 838	3.32	3.53	12.24	0.41	13.88	0.46
Latin American Count.	1 452 307	1 197 700	1 274 248	3.36	3.33	7.75	0.26	6.39	0.21
Cent. Amer. Common Market	28 924	23 502	24 529	0.07	0.06	7.52	0.00	4.37	0.00
Andean Community	201 181	163 278	303 130	0.46	0.79	74.70	0.35	85.65	0.39
ASEM (relac. Euro-Asia)	886 709	685 609	1 131 564	1.92	2.96	67.15	1.27	65.05	1.25
EDA (Econ Dinam Asian)	336 760	286 310	283 841	0.80	0.74	0.36	0.00	-0.86	-0.01
China+H. Kong+Macau	523 928	381 556	820 572	1.07	2.15	114.90	1.22	115.06	1.23

Source: GEE, based on data on International Trade statistics from Statistics Portugal (most up-to-date versions available). Estimates for operators under the assimilation threshold and non-responses are included in Intra-EU trade.

Notes:

- [1] Sum of Exports to EU and Exports to third countries.
- [2] 12 months ending in October 2012
- [3] $(\text{nov 11-oct 12})/(\text{nov 10-oct 11}) \times 100 - 100$
- [4] Contributions to growth, shift share analysis: $(\text{rate of change}) \times (\text{weight in the previous period}) \div 100$.
- [5] African Countries of Portuguese Official Language
- [6] African, Caribbean and Pacific Group of States
- [7] Community of Portuguese Language Countries
- [8] Commonwealth of Independent States

Chart 5 – Share of Services in total Trade



Source: GEE, based on data from the Balance of Payments Statistics of the Bank of Portugal.

Notes:

The Exports from the Balance of Payments (Credit) corresponds to the Exports in International Trade Statistics (sum of Exports of goods to the EU with the Exports to Third Countries).

The Imports from the Balance of Payments (Debit) corresponds to the Imports in International Trade Statistics (sum of the Imports of goods from the EU with the Imports from Third Countries).

Table 17 - Trade of Goods and Services as a percentage of GDP

	2008	2009	2010	2011	2009				2010				2011				2012		
					Q1	Q2	Q3	Q4	Q1	Q2	Q3	Q4	Q1	Q2	Q3	Q4	Q1	Q2	Q3
Current Values as a percentage of GDP																			
Exports (Fob)	32.4	28.0	31.3	35.8	26.8	27.4	28.7	29.2	29.3	31.0	32.1	32.8	33.8	35.8	36.5	37.0	37.9	38.8	39.3
- Goods	23.8	20.0	22.8	26.4	18.8	19.4	20.8	21.1	21.2	22.5	23.4	24.0	24.9	26.3	26.9	27.5	28.2	28.9	29.2
- Services	8.6	8.0	8.5	9.4	8.1	8.0	7.8	8.1	8.1	8.5	8.6	8.7	9.0	9.5	9.6	9.5	9.6	9.9	10.1
Imports (Fob)	42.5	35.4	39.0	40.1	34.4	34.2	36.6	36.6	36.5	40.1	38.6	40.9	40.1	41.3	40.5	38.5	39.5	38.7	39.5
- Goods	36.8	30.0	33.4	34.1	29.0	28.6	31.2	31.3	31.1	34.3	32.9	35.2	34.5	35.0	34.4	32.6	33.9	32.9	33.8
- Services	5.7	5.4	5.7	6.0	5.4	5.6	5.4	5.4	5.4	5.7	5.8	5.7	5.6	6.3	6.1	5.9	5.7	5.8	5.7
Annual real growth rate																			
Exports (Fob)	-0.1	-10.9	10.2	7.2	-18.6	-14.6	-9.2	-0.2	11.0	11.3	9.7	9.0	8.4	8.3	6.1	6.2	8.2	3.7	1.7
- Goods	-0.6	-12.4	11.2	7.4	-22.1	-17.1	-9.6	0.6	14.4	12.7	9.0	9.3	8.3	8.2	5.9	7.3	10.0	5.2	2.4
- Services	1.4	-6.6	7.5	6.7	-8.7	-7.2	-8.2	-2.2	2.6	7.6	11.9	8.0	8.6	8.4	6.7	3.2	3.3	-0.3	-0.1
Imports (Fob)	2.3	-10.0	8.0	-5.9	-15.3	-13.9	-8.6	-1.9	8.8	14.1	3.6	6.1	0.0	-5.3	-4.4	-13.4	-5.4	-10.8	-8.2
- Goods	2.1	-10.6	8.6	-6.9	-16.9	-15.4	-8.7	-0.9	10.0	16.0	2.9	6.1	-0.1	-7.1	-5.1	-14.9	-5.6	-10.4	-7.6
- Services	3.8	-6.3	4.7	0.7	-4.8	-4.8	-7.9	-7.8	1.6	3.1	7.8	6.5	0.8	5.8	-0.5	-3.4	-4.1	-12.8	-11.3

Source: GEE, based on data from the Quarterly National Accounts (base 2006) of Statistics Portugal. Includes Intra and Extracommunity trade.

Table 18 - Goods and Services (Credit) - Services components

CREDIT (Exports)	january to september		Structure (%)				Growth rates and contributions to growth			
			Annual		jan-sep		Last 12 months ^[1]		jan-sep	
	2011	2012	2006	2011	2011	2012	y.o.y., % ^[2]	contrib. p.p. ^[3]	y.o.y., %	contrib. p.p. ^[3]
	Goods and Services	46 083	48 417	100.0	100.0	100.0	100.0	6.3	6.3	5.1
Goods	31 582	33 873	71.0	68.9	68.5	70.0	8.4	5.8	7.3	5.0
Services	14 502	14 544	29.0	31.1	31.5	30.0	1.6	0.5	0.3	0.1
Transportation	3 909	4 091	7.1	8.4	8.5	8.5	4.6	0.4	4.7	0.4
Travel	6 317	6 670	13.2	13.2	13.7	13.8	5.3	0.7	5.6	0.8
Communications services	365	382	0.9	0.8	0.8	0.8	2.0	0.0	4.8	0.0
Construction services	421	394	0.8	0.9	0.9	0.8	-3.1	0.0	-6.3	-0.1
Insurance services	83	75	0.2	0.2	0.2	0.2	-8.9	0.0	-9.0	0.0
Financial services	178	163	0.4	0.4	0.4	0.3	-4.8	0.0	-8.2	0.0
Computer and information services	265	346	0.3	0.6	0.6	0.7	36.4	0.2	30.8	0.2
Royalties and license fees	33	29	0.1	0.1	0.1	0.1	-0.9	0.0	-12.7	0.0
Other business services	2 606	2 023	5.2	5.8	5.7	4.2	-13.7	-0.8	-22.4	-1.3
Personal, cult., and recreat. Serv.	178	194	0.4	0.4	0.4	0.4	2.1	0.0	9.0	0.0
Government services	149	176	0.3	0.3	0.3	0.4	13.4	0.0	18.7	0.1

Source: GEE, based on data from the Balance of Payments Statistics of Banco de Portugal.

Notes:

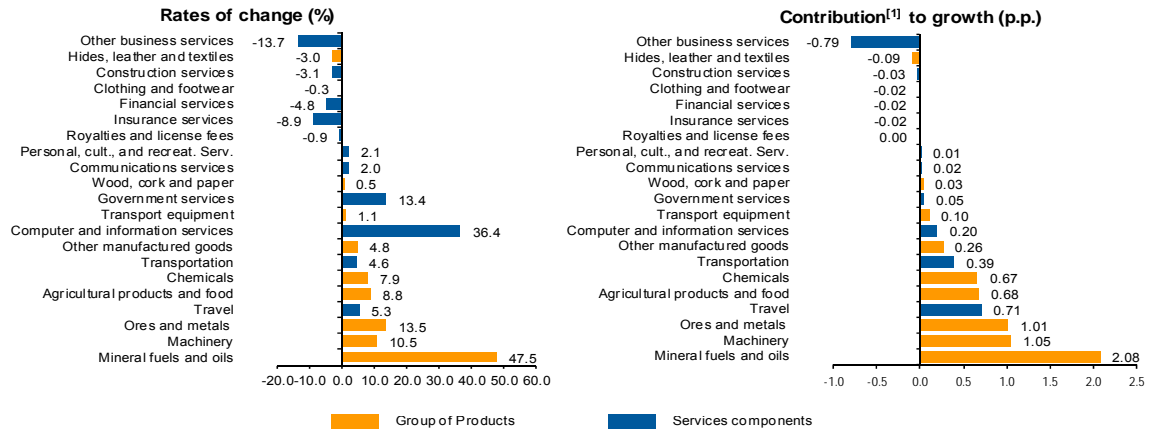
[1] 12 months ending in september 2012

[2] (oct 11-sep 12)/(oct 10-sep 11) x 100 - 100

[3] Contributions to growth, shift share analysis: (rate of change) x (weight in the previous period) ÷ 100. Measures the proportion of growth of Imports attributable to each category specified.

Chart 6 - Growth rates of exports of goods and services and contribution to growth

Previous 12 months ending in september 2012



Source: GEE, based on data from the Bank de Portugal for Exports of goods and services, and Statistics Portugal, for the structure of exports of goods. The distribution of the contribution of growth of exports of goods (data from the Balance of Payments, Bank of Portugal) by group of products follows the structure implicit in the database of International Trade Statistics Portugal for analogous Goods (sum of Exports of goods to the EU with the Exports to Third Countries).

Notes:

The Exports from the Balance of Payments (Credit) corresponds to the Exports in International Trade Statistics (sum of Exports of goods to the EU with the Exports to Third Countries).

[1] Contribution to growth, shift-share analysis: (rate of change) x (weight in the previous period) ÷ 100. The sum corresponds to the growth rate of Exports of Goods and Services over the past 12 months, according to statistics from the Balance of Payments Bank of Portugal (6.3%).

Table 19 - Goods and Services (Credit) - Services components
Annual rate of change (2004-2012)

Credit (Exports)	Share in 2011 (%)	2004	2005	2006	2007	2008	2009	2010	2011	jan-sep 2012
Goods and Services	100.0	6.3	1.5	16.4	9.9	2.8	-15.3	12.7	13.3	5.1
Goods	68.9	5.7	0.7	15.1	7.5	1.8	-18.3	15.2	15.3	7.3
Services	31.1	8.0	3.5	19.9	15.7	5.3	-8.7	7.7	9.0	0.3
Transportation	8.4	9.1	11.4	41.7	18.9	10.4	-12.6	13.0	10.9	4.7
Travel	13.2	5.9	0.1	7.6	10.9	0.5	-7.2	10.0	7.2	5.6
Communications services	0.8	18.8	20.4	8.6	16.4	4.7	-15.6	-2.9	0.5	4.8
Construction services	0.9	27.4	-15.7	45.9	40.9	8.3	-21.9	-1.9	13.9	-6.3
Insurance services	0.2	32.9	-26.5	14.2	5.9	5.1	3.3	-9.1	11.1	-9.0
Financial services	0.4	30.6	-9.2	16.8	25.8	-4.7	-32.7	4.4	42.9	-8.2
Computer and information services	0.6	20.6	4.5	41.6	36.8	15.3	1.0	1.1	37.7	30.8
Royalties and license fees	0.1	-15.7	69.5	51.4	10.0	-29.8	150.5	-71.7	41.2	-12.7
Other business services	5.8	4.3	8.9	27.0	19.5	10.2	-5.9	1.7	8.7	-22.4
Personal, cult., and recreat. Serv.	0.4	30.8	6.7	22.5	-6.3	7.1	10.7	20.7	-11.6	9.0
Government services	0.3	6.8	-15.4	17.7	10.3	0.5	-2.4	17.6	3.7	18.7

Source: GEE, based on data from the Balance of Payments Statistics of Banco de Portugal.

Table 20 - Goods and Services (Debit) - Services components

values in Millions of Euros

DEBIT (Imports)	january to september		Structure (%)				Growth rates and contributions to growth			
			Annual		jan-sep		Last 12 months ^[1]		jan-sep	
	2011	2012	2006	2011	2011	2012	y.o.y., % ^[2]	contrib. p.p. ^[3]	y.o.y., %	contrib. p.p. ^[3]
Goods and Services	51 050	48 139	100.0	100.0	100.0	100.0	-6.2	-6.2	-5.7	-5.7
Goods	42 433	40 355	84.9	83.0	83.1	83.8	-6.1	-5.1	-4.9	-4.1
Services	8 617	7 783	15.1	17.0	16.9	16.2	-6.7	-1.1	-9.7	-1.6
Transportation	2 520	2 433	4.7	5.0	4.9	5.1	-2.6	-0.1	-3.5	-0.2
Travel	2 269	2 224	4.2	4.4	4.4	4.6	-1.3	-0.1	-2.0	-0.1
Communications services	323	317	0.6	0.6	0.6	0.7	-3.5	0.0	-2.0	0.0
Construction services	92	72	0.2	0.2	0.2	0.2	-18.9	0.0	-21.2	0.0
Insurance services	174	183	0.3	0.3	0.3	0.4	2.9	0.0	5.1	0.0
Financial services	420	320	0.3	0.8	0.8	0.7	-13.5	-0.1	-23.8	-0.2
Computer and information services	328	286	0.4	0.7	0.6	0.6	-7.9	0.0	-13.1	-0.1
Royalties and license fees	296	261	0.5	0.6	0.6	0.5	-8.3	0.0	-11.8	-0.1
Other business services	1 769	1 256	3.0	3.6	3.5	2.6	-20.1	-0.7	-29.0	-1.0
Personal, cult., and recreat. Serv.	360	365	0.6	0.7	0.7	0.8	1.3	0.0	1.2	0.0
Government services	65	66	0.3	0.1	0.1	0.1	-1.6	0.0	1.9	0.0

Source: GEE, based on data from the Balance of Payments Statistics of Banco de Portugal for the Total Exports of Goods and Services.

Notes:

Fob values for Imports of goods.

[1] 12 months ending in september 2012

[2] (oct 11-sep 12)/(oct 10-sep 11) x 100 - 100

[3] Contributions to growth, shift share analysis: (rate of change) x (weight in the previous period) ÷ 100. Measures the proportion of growth of Imports attributable to each category specified.