

## Statistics of International Trade

No 02/2013

Includes baseline data from Statistics Portugal for the international trade of Portugal

■ december 2012 - Intra + Extra-EU Trade

---

### Contents

#### Global Evolution

- |                                    |        |
|------------------------------------|--------|
| 1. Recent Trade Balance            | Pag. 3 |
| 2. Monthly and quarterly evolution | 4      |

#### Exports of Goods

- |   |    |
|---|----|
| 3. By Group of Products (Intra+Extra)                             | 5  |
| 4. By Group of Products (Extra)                                   | 6  |
| 5. By Group of Products – growth rate and contribution to growth  | 7  |
| 6. From selected markets (Intra+Extra)                            | 8  |
| 7. From selected markets (Extra)                                  | 9  |
| 8. By destination market – structure (%)                          | 9  |
| 9. By destination market – growth rate and contribution to growth | 10 |

#### Imports of Goods

- |   |    |
|---|----|
| 10. By Group of Products (Intra+Extra EU)     | 11 |
| 11. From a selection of markets (Intra+Extra) | 12 |
| 12. By Group of Products (Extra EU)           | 13 |
| 13. From a selection of markets (Extra)       | 13 |

#### By geographical and economic areas

- |   |    |
|---|----|
| 14. Main Countries (Intra and Extra)                  | 14 |
| 15. Imports: contribution to growth (Intra and Extra) | 16 |
| 16. Exports: contribution to growth (Intra and Extra) | 18 |

#### Goods and Services

- |  |    |
|--|----|
| 17. Trade in goods and services as a percentage of GDP | 20 |
| 18. Goods and Services (credit) – Services components  | 21 |
| 19. Goods and Services (credit) – growth rate          | 22 |
| 20. Goods and Services (debit) – Services components   | 22 |

#### Charts Index

- |  |    |
|--|----|
| 1. Rate of coverage of the imports by the exports of goods                 | 2  |
| 2. Growth rate of exports by Group of Products and contribution to growth  | 6  |
| 3. Growth rate of exports by markets and contribution to growth            | 8  |
| 4. Growth rate of imports by markets and contribution to growth            | 12 |
| 5. Share of services in total trade  | 20 |
| 6. Growth rate of exports of goods and services and contribution to growth | 21 |

**NOTE**

In **June 2010**, Statistics Portugal announced a new data series on International Trade for the period 1993-2009. This new series resulted from a review process of its methodology, which reflected the need to obtain results with greater reliability and accuracy, and includes, in addition to various methodological changes, new information reported by companies.

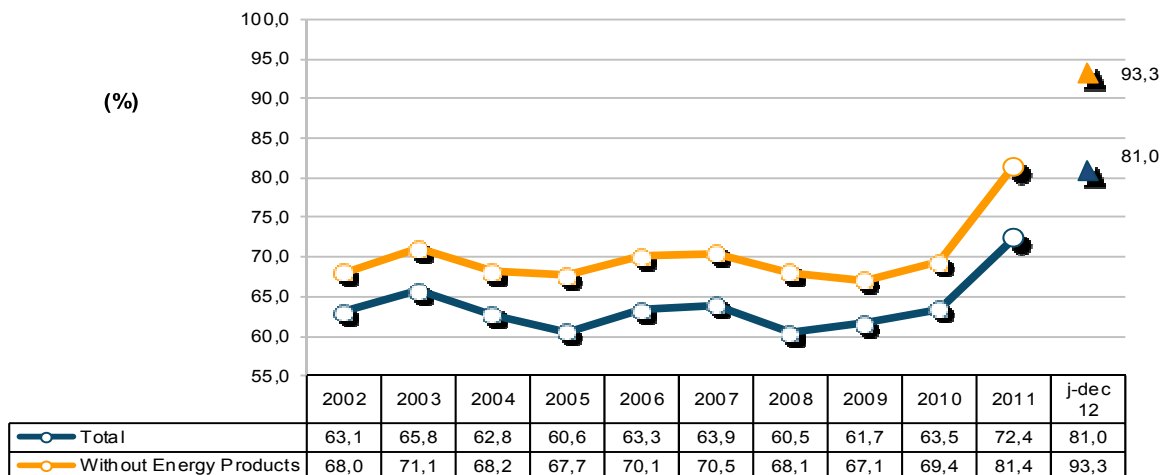
Since 1993, following the creation of the Single Market, the collection of information relating to international trade in goods is done by a new system supported by a compulsory survey (Intrastat declaration) for all operators, whose trade in goods with other Member States exceeds certain thresholds (assimilation threshold). Since 2005, and following the Community rules on quality control of the statistics on International Trade, a confrontation between regular information from the Intrastat system and data of an administrative nature was put in place, which included statements from Value Added Tax (VAT), as well as an analysis of the asymmetries with the statistics reported by other member countries. Following that, estimates for the total international trade, based on estimates for companies that are below the threshold of assimilation, as well as non-response of Intra-community trade started to be published.

The entry into force of “*Informação Empresarial Simplificada*” (IES) in 2007, contributed to ease the comparison of data on international trade with other sources, now made possible from 2006 onwards (reference period for the data). IES, along with information on the VAT constitutes an important source of information for the validity of the quality of the statistics on International Trade.

In **December 2012**, Statistics Portugal released the provisional data from the 2011 International Trade, as well as the 2010 final results.

**Global Evolution<sup>1</sup>**

**Chart 1 – Progress of the coverage rate (fob/cif),  
% imports by exports of goods  
Intra + Extra EU Trade**



Source: GEE, based on data on International Trade statistics from Statistics Portugal (most up-to-date versions available). Estimates for operators under the assimilation threshold and non-responses are included in Intra-EU trade.

<sup>1</sup> Database of international trade (Intra and Extra EU) released by Statistics Portugal (SP) for the period of January to December 2012, corresponding to preliminary versions for both intra and extra community trade. The data for intratrade includes estimates for non-responses (value of transactions of companies for which SP has not yet received information), as well as periodic reporting of companies that are below the assimilation threshold (annual value of intra-Community below which operators are exempted from Intrastat statistical declaration, limited to delivery of the periodic tax declaration: in the case of Portugal, 200 thousand euros for imports from EU and 250 thousand for exports to EU in 2011). On the other hand, the current methodology considers, in addition to the regular comparison between the Intrastat declarations and Value Added Tax (VAT), the comparison with the data obtained from “*Informação Empresarial Simplificada*” (IES).

**Table 1 – Recent evolution of the Portuguese Trade Balance (Goods)**

Preliminary data version of january to december 2012

| Intra + Extra-EU                | 2007    | 2008    | 2009    | 2010    | 2011    | Annual Evolution 2007/11 | january to december |         | Monthly Evolution 2011/12 | Last 3 months   |                 | Last 12 months |                |
|---------------------------------|---------|---------|---------|---------|---------|--------------------------|---------------------|---------|---------------------------|-----------------|-----------------|----------------|----------------|
|                                 |         |         |         |         |         |                          | 2011                | 2012    |                           | oct 11 - dec 11 | oct 12 - dec 12 | jan 11- dec 11 | jan 12- dec 12 |
| <b>Millions of Euros</b>        |         |         |         |         |         |                          |                     |         |                           |                 |                 |                |                |
| Exports (fob)                   | 38 294  | 38 847  | 31 697  | 37 268  | 42 870  |                          | 42 870              | 45 347  |                           | 11 022          | 11 130          | 42 870         | 45 347         |
| y.o.y. %                        | -       | 1,4     | -18,4   | 17,6    | 15,0    |                          | -                   | 5,8     |                           | -               | 1,0             | -              | 5,8            |
| Imports (cif)                   | 59 927  | 64 194  | 51 379  | 58 647  | 59 243  |                          | 59 243              | 56 015  |                           | 14 139          | 13 713          | 59 243         | 56 015         |
| y.o.y. %                        | -       | 7,1     | -20,0   | 14,1    | 1,0     |                          | -                   | -5,4    |                           | -               | -3,0            | -              | -5,4           |
| Trade Balance (fob-cif)         | -21 632 | -25 347 | -19 682 | -21 379 | -16 373 |                          | -16 373             | -10 667 |                           | -3 117          | -2 583          | -16 373        | -10 667        |
| y.o.y. %                        | -       | 17,2    | -22,3   | 8,6     | -23,4   |                          | -                   | -34,8   |                           | -               | -17,1           | -              | -34,8          |
| Rate of Coverage (fob/cif), %   | 63,9    | 60,5    | 61,7    | 63,5    | 72,4    |                          | 72,4                | 81,0    |                           | 78,0            | 81,2            | 72,4           | 81,0           |
| <b>Without Energy products:</b> |         |         |         |         |         |                          |                     |         |                           |                 |                 |                |                |
| Exports (fob)                   | 36 568  | 36 688  | 30 151  | 34 877  | 39 775  |                          | 39 775              | 41 481  |                           | 10 111          | 10 301          | 39 775         | 41 481         |
| y.o.y. %                        | -       | 0,3     | -17,8   | 15,7    | 14,0    |                          | -                   | 4,3     |                           | -               | 1,9             | -              | 4,3            |
| Imports (cif)                   | 51 870  | 53 884  | 44 912  | 50 281  | 48 850  |                          | 48 850              | 44 462  |                           | 11 618          | 11 055          | 48 850         | 44 462         |
| y.o.y. %                        | -       | 3,9     | -16,7   | 12,0    | -2,8    |                          | -                   | -9,0    |                           | -               | -4,8            | -              | -9,0           |
| Trade Balance (fob-cif)         | -15 302 | -17 196 | -14 760 | -15 404 | -9 075  |                          | -9 075              | -2 981  |                           | -1 507          | - 754           | -9 075         | -2 981         |
| y.o.y. %                        | -       | 12,4    | -14,2   | 4,4     | -41,1   |                          | -                   | -67,2   |                           | -               | -50,0           | -              | -67,2          |
| Rate of Coverage (fob/cif), %   | 70,5    | 68,1    | 67,1    | 69,4    | 81,4    |                          | 81,4                | 93,3    |                           | 87,0            | 93,2            | 81,4           | 93,3           |
| <b>Intra-EU</b>                 |         |         |         |         |         |                          |                     |         |                           |                 |                 |                |                |
| <b>Millions of Euros</b>        |         |         |         |         |         |                          |                     |         |                           |                 |                 |                |                |
| Exports (fob)                   | 29 525  | 28 904  | 23 892  | 27 573  | 31 344  |                          | 23 521              | 24 099  |                           | 7 665           | 7 605           | 30 818         | 31 922         |
| y.o.y. %                        | -       | -2,1    | -17,3   | 15,4    | 13,7    |                          | -                   | 2,5     |                           | -               | -0,8            | -              | 3,6            |
| Imports (cif)                   | 45 887  | 48 007  | 40 376  | 43 205  | 42 149  |                          | 31 825              | 29 445  |                           | 10 067          | 9 381           | 43 783         | 39 769         |
| y.o.y. %                        | -       | 4,6     | -15,9   | 7,0     | -2,4    |                          | -                   | -7,5    |                           | -               | -6,8            | -              | -9,2           |
| Trade Balance (fob-cif)         | -16 362 | -19 103 | -16 484 | -15 631 | -10 805 |                          | -8 304              | -5 346  |                           | -2 402          | -1 776          | -12 965        | -7 847         |
| y.o.y. %                        | -       | 16,8    | -13,7   | -5,2    | -30,9   |                          | -                   | -35,6   |                           | -               | -26,1           | -              | -39,5          |
| Rate of Coverage (fob/cif), %   | 64,3    | 60,2    | 59,2    | 63,8    | 74,4    |                          | 73,9                | 81,8    |                           | 76,1            | 81,1            | 70,4           | 80,3           |
| <b>Without Energy products:</b> |         |         |         |         |         |                          |                     |         |                           |                 |                 |                |                |
| Exports (fob)                   | 28 879  | 28 023  | 23 226  | 26 528  | 30 014  |                          | 22 630              | 22 793  |                           | 7 345           | 7 159           | 29 710         | 30 178         |
| y.o.y. %                        | -       | -3,0    | -17,1   | 14,2    | 13,1    |                          | -                   | 0,7     |                           | -               | -2,5            | -              | 1,6            |
| Imports (cif)                   | 43 871  | 45 441  | 38 792  | 41 216  | 39 818  |                          | 30 110              | 27 452  |                           | 9 572           | 8 839           | 41 470         | 37 161         |
| y.o.y. %                        | -       | 3,6     | -14,6   | 6,2     | -3,4    |                          | -                   | -8,8    |                           | -               | -7,7            | -              | -10,4          |
| Trade Balance (fob-cif)         | -14 992 | -17 418 | -15 566 | -14 688 | -9 804  |                          | -7 481              | -4 659  |                           | -2 227          | -1 680          | -11 760        | -6 983         |
| y.o.y. %                        | -       | 16,2    | -10,6   | -5,6    | -33,3   |                          | -                   | -37,7   |                           | -               | -24,6           | -              | -40,6          |
| Rate of Coverage (fob/cif), %   | 65,8    | 61,7    | 59,9    | 64,4    | 75,4    |                          | 75,2                | 83,0    |                           | 76,7            | 81,0            | 71,6           | 81,2           |
| <b>Extra-UE</b>                 |         |         |         |         |         |                          |                     |         |                           |                 |                 |                |                |
| <b>Millions of Euros</b>        |         |         |         |         |         |                          |                     |         |                           |                 |                 |                |                |
| Exports (fob)                   | 8 769   | 9 943   | 7 804   | 9 189   | 10 982  |                          | 7 916               | 9 763   |                           | 2 828           | 3 366           | 10 345         | 12 829         |
| y.o.y. %                        | -       | 13,4    | -21,5   | 17,7    | 19,5    |                          | -                   | 23,3    |                           | -               | 19,0            | -              | 24,0           |
| Imports (cif)                   | 14 040  | 16 187  | 11 003  | 13 849  | 15 581  |                          | 12 035              | 12 184  |                           | 4 173           | 4 260           | 15 445         | 15 729         |
| y.o.y. %                        | -       | 15,3    | -32,0   | 25,9    | 12,5    |                          | -                   | 1,2     |                           | -               | 2,1             | -              | 1,8            |
| Trade Balance (fob-cif)         | -5 271  | -6 244  | -3 198  | -4 660  | -4 599  |                          | -4 120              | -2 421  |                           | -1 345          | - 895           | -5 100         | -2 900         |
| y.o.y. %                        | -       | 18,5    | -48,8   | 45,7    | -1,3    |                          | -                   | -41,2   |                           | -               | -33,5           | -              | -43,1          |
| Rate of Coverage (fob/cif), %   | 62,5    | 61,4    | 70,9    | 66,4    | 70,5    |                          | 65,8                | 80,1    |                           | 67,8            | 79,0            | 67,0           | 81,6           |
| <b>Without Energy products:</b> |         |         |         |         |         |                          |                     |         |                           |                 |                 |                |                |
| Exports (fob)                   | 7 690   | 8 666   | 6 925   | 7 769   | 9 212   |                          | 6 622               | 8 080   |                           | 2 339           | 2 790           | 8 741          | 10 670         |
| y.o.y. %                        | -       | 12,7    | -20,1   | 12,2    | 18,6    |                          | -                   | 22,0    |                           | -               | 19,3            | -              | 22,1           |
| Imports (cif)                   | 8 000   | 8 443   | 6 120   | 7 510   | 7 618   |                          | 5 964               | 5 295   |                           | 1 970           | 1 806           | 7 847          | 6 948          |
| y.o.y. %                        | -       | 5,5     | -27,5   | 22,7    | 1,4     |                          | -                   | -11,2   |                           | -               | -8,3            | -              | -11,5          |
| Trade Balance (fob-cif)         | - 310   | 223     | 806     | 259     | 1 595   |                          | 658                 | 2 785   |                           | 368             | 983             | 894            | 3 722          |
| y.o.y. %                        | -       | -171,8  | 261,6   | -67,9   | 516,2   |                          | -                   | 323,2   |                           | -               | 167,2           | -              | 316,1          |
| Rate of Coverage (fob/cif), %   | 96,1    | 102,6   | 113,2   | 103,4   | 120,9   |                          | 111,0               | 152,6   |                           | 118,7           | 154,4           | 111,4          | 153,6          |

Source: GEE, based on data on International Trade statistics from Statistics Portugal (most up-to-date versions available). Estimates for operators under the assimilation threshold and non-responses are included in Intra-EU trade.

Notes:

Sum of Exports to EU and Exports to third countries.

Sum of Imports from EU and Imports from third countries.

Conversion factor used cif-fob for 2008, 2009, 2010, 2011 and 2012: 0.9529

**Table 2 – Monthly and quarterly evolution of Portuguese International Trade**  
**Preliminary data version of january to december 2012**

values in Millions of Euros

| Intra+Extra EU-27 | IMPORTS (cif) |        |           | EXPORTS (fob) |        |           |
|-------------------|---------------|--------|-----------|---------------|--------|-----------|
|                   | 2011          | 2012   | y.o.y., % | 2011          | 2012   | y.o.y., % |
| jan               | 4 610         | 4 726  | 2,5       | 3 199         | 3 623  | 13,3      |
| feb               | 4 857         | 4 676  | -3,7      | 3 368         | 3 797  | 12,7      |
| mar               | 5 628         | 5 106  | -9,3      | 3 807         | 4 149  | 9,0       |
| apr               | 5 122         | 4 415  | -13,8     | 3 472         | 3 558  | 2,5       |
| may               | 5 570         | 5 031  | -9,7      | 3 767         | 4 043  | 7,3       |
| jun               | 4 781         | 4 536  | -5,1      | 3 640         | 3 987  | 9,5       |
| jul               | 5 033         | 4 709  | -6,4      | 3 833         | 4 115  | 7,3       |
| aug               | 4 318         | 4 418  | 2,3       | 2 949         | 3 365  | 14,1      |
| sep               | 5 186         | 4 684  | -9,7      | 3 815         | 3 581  | -6,1      |
| oct               | 4 814         | 5 042  | 4,8       | 3 821         | 4 036  | 5,6       |
| nov               | 4 848         | 4 545  | -6,2      | 3 905         | 3 902  | -0,1      |
| dec               | 4 477         | 4 126  | -7,9      | 3 296         | 3 192  | -3,2      |
| Q1                | 15 095        | 14 507 | -3,9      | 10 373        | 11 568 | 11,5      |
| Q2                | 15 472        | 13 983 | -9,6      | 10 878        | 11 588 | 6,5       |
| Q3                | 14 537        | 13 811 | -5,0      | 10 597        | 11 061 | 4,4       |
| Q4                | 14 139        | 13 713 | -3,0      | 11 022        | 11 130 | 1,0       |

| Intra EU-27 | IMPORTS (cif) |        |           | EXPORTS (fob) |       |           |
|-------------|---------------|--------|-----------|---------------|-------|-----------|
|             | 2011          | 2012   | y.o.y., % | 2011          | 2012  | y.o.y., % |
| jan         | 3 515         | 3 306  | -5,9      | 2 504         | 2 656 | 6,1       |
| feb         | 3 723         | 3 438  | -7,7      | 2 588         | 2 746 | 6,1       |
| mar         | 4 280         | 3 720  | -13,1     | 2 922         | 3 015 | 3,2       |
| apr         | 3 668         | 3 205  | -12,6     | 2 584         | 2 548 | -1,4      |
| may         | 3 910         | 3 527  | -9,8      | 2 856         | 2 860 | 0,1       |
| jun         | 3 570         | 3 371  | -5,6      | 2 725         | 2 934 | 7,7       |
| jul         | 3 614         | 3 374  | -6,7      | 2 875         | 2 922 | 1,6       |
| aug         | 3 095         | 2 897  | -6,4      | 2 082         | 2 179 | 4,7       |
| sep         | 3 653         | 3 280  | -10,2     | 2 817         | 2 600 | -7,7      |
| oct         | 3 659         | 3 721  | 1,7       | 2 819         | 2 806 | -0,5      |
| nov         | 3 579         | 3 365  | -6,0      | 2 831         | 2 777 | -1,9      |
| dec         | 3 355         | 2 979  | -11,2     | 2 305         | 2 174 | -5,7      |
| Q1          | 11 519        | 10 463 | -9,2      | 8 015         | 8 417 | 5,0       |
| Q2          | 11 148        | 10 103 | -9,4      | 8 166         | 8 342 | 2,2       |
| Q3          | 10 363        | 9 551  | -7,8      | 7 774         | 7 701 | -0,9      |
| Q4          | 10 594        | 10 065 | -5,0      | 7 956         | 7 757 | -2,5      |

| Extra EU-27 | IMPORTS (cif) |       |           | EXPORTS (fob) |       |           |
|-------------|---------------|-------|-----------|---------------|-------|-----------|
|             | 2011          | 2012  | y.o.y., % | 2011          | 2012  | y.o.y., % |
| jan         | 1 094         | 1 420 | 29,7      | 694           | 967   | 39,2      |
| feb         | 1 134         | 1 238 | 9,2       | 780           | 1 051 | 34,8      |
| mar         | 1 347         | 1 386 | 2,9       | 885           | 1 133 | 28,1      |
| apr         | 1 454         | 1 210 | -16,8     | 888           | 1 011 | 13,9      |
| may         | 1 660         | 1 504 | -9,3      | 910           | 1 182 | 29,9      |
| jun         | 1 211         | 1 165 | -3,7      | 914           | 1 053 | 15,1      |
| jul         | 1 419         | 1 335 | -5,9      | 958           | 1 193 | 24,5      |
| aug         | 1 222         | 1 521 | 24,4      | 867           | 1 186 | 36,8      |
| sep         | 1 533         | 1 404 | -8,4      | 998           | 982   | -1,7      |
| oct         | 1 154         | 1 322 | 14,5      | 1 001         | 1 230 | 22,8      |
| nov         | 1 269         | 1 180 | -7,0      | 1 073         | 1 126 | 4,8       |
| dec         | 1 122         | 1 146 | 2,2       | 991           | 1 017 | 2,7       |
| Q1          | 3 576         | 4 044 | 13,1      | 2 359         | 3 151 | 33,6      |
| Q2          | 4 324         | 3 880 | -10,3     | 2 712         | 3 246 | 19,7      |
| Q3          | 4 174         | 4 261 | 2,1       | 2 823         | 3 360 | 19,0      |
| Q4          | 3 545         | 3 648 | 2,9       | 3 065         | 3 372 | 10,0      |

Source: GEE, based on data on International Trade statistics from Statistics Portugal (most up-to-date versions available). Estimates for operators under the assimilation threshold and non-responses are included in Intra-EU trade.

Exports\* of Goods

Table 3 – Portuguese Exports (Intra + Extra EU) of Goods by Group of Products

Of which: products by Chapter (CN-2) above 30 million euros in 2012

| Grp/<br>CN-2 | Group of Products   | Millions of Euros |               | Structure (%) |              | Growth rates and contributions to growth |                   |              |                   |
|--------------|---|-------------------|---------------|---------------|--------------|--|-------------------|--------------|-------------------|
|              |   | jan-dec           |               | jan-dec       |              | Last 12 months [1]                       |                   | jan-dec      |                   |
|              |   | 2011              | 2012          | 2011          | 2012         | y.o.y. % [2]                             | Contrib. p.p. [3] | y.o.y. %     | Contrib. p.p. [3] |
|              | <b>TOTAL EXPORTS</b>  | <b>42 870</b>     | <b>45 347</b> | <b>100,0</b>  | <b>100,0</b> | <b>5,8</b>                               | <b>5,8</b>        | <b>5,8</b>   | <b>5,8</b>        |
| <b>000</b>   | <b>Agricultural products and food</b>   | <b>4 905</b>      | <b>5 210</b>  | <b>11,4</b>   | <b>11,5</b>  | <b>6,2</b>                               | <b>0,7</b>        | <b>6,2</b>   | <b>0,7</b>        |
| 22           | Beverages, spirits and vinegar  | 1 033             | 1 109         | 2,4           | 2,4          | 7,3                                      | 0,2               | 7,3          | 0,2               |
| 03           | Fish and crustaceans, molluscs and other aquatic invertebrates  | 622               | 584           | 1,5           | 1,3          | -6,2                                     | -0,1              | -6,2         | -0,1              |
| 15           | Animal/vegetable fats and oils and their cleavage products; prepared edible fats; animal/vegetable waxes                                    | 408               | 443           | 1,0           | 1,0          | 8,6                                      | 0,1               | 8,6          | 0,1               |
| 24           | Tobacco and manufactured tobacco substitutes  | 387               | 413           | 0,9           | 0,9          | 6,6                                      | 0,1               | 6,6          | 0,1               |
| 20           | Preparations of vegetables, fruit, nuts or other parts of plants  | 321               | 345           | 0,7           | 0,8          | 7,4                                      | 0,1               | 7,4          | 0,1               |
| 04           | Dairy produce; birds' eggs; natural honey; edible products of animal origin, nes.   | 299               | 335           | 0,7           | 0,7          | 11,9                                     | 0,1               | 11,9         | 0,1               |
| 08           | Edible fruit and nuts; peel of citrus fruit or melons   | 283               | 317           | 0,7           | 0,7          | 12,1                                     | 0,1               | 12,1         | 0,1               |
| 16           | Preparations of meat, of fish or of crustaceans, molluscs or other aquatic invertebrates  | 253               | 278           | 0,6           | 0,6          | 10,2                                     | 0,1               | 10,2         | 0,1               |
| 19           | Preparations of cereals, flour, starch or milk; pastrycooks products  | 230               | 259           | 0,5           | 0,6          | 12,6                                     | 0,1               | 12,6         | 0,1               |
| 07           | Edible vegetables and certain roots and tubers  | 174               | 194           | 0,4           | 0,4          | 11,1                                     | 0,0               | 11,1         | 0,0               |
| 02           | Meat and edible meat offal  | 124               | 155           | 0,3           | 0,3          | 25,4                                     | 0,1               | 25,4         | 0,1               |
| 17           | Sugars and sugar confectionery  | 178               | 141           | 0,4           | 0,3          | -20,7                                    | -0,1              | -20,7        | -0,1              |
| 21           | Miscellaneous edible preparations   | 123               | 141           | 0,3           | 0,3          | 14,8                                     | 0,0               | 14,8         | 0,0               |
| 01           | Live animals  | 67                | 101           | 0,2           | 0,2          | 49,5                                     | 0,1               | 49,5         | 0,1               |
| 23           | Residues and waste from the food industries; prepared animal fodder   | 58                | 67            | 0,1           | 0,1          | 14,7                                     | 0,0               | 14,7         | 0,0               |
| 05           | Products of animal origin, not elsewhere specified or included  | 61                | 65            | 0,1           | 0,1          | 6,0                                      | 0,0               | 6,0          | 0,0               |
| 09           | Coffee, tea, maté and spices  | 62                | 65            | 0,1           | 0,1          | 4,8                                      | 0,0               | 4,8          | 0,0               |
| 06           | Live trees and plants; bulbs, roots and the like; cut flowers and ornamental foliage  | 67                | 55            | 0,2           | 0,1          | -18,0                                    | 0,0               | -18,0        | 0,0               |
| 12           | Oil seeds/oleaginous fruits/miscellaneous grains, seeds and fruits/industrial or medicinal plants/straw and fodder                          | 55                | 52            | 0,1           | 0,1          | -4,7                                     | 0,0               | -4,7         | 0,0               |
| <b>11</b>    | <b>Products of the milling industry; malt; starches; inulin; wheat gluten</b>   | <b>30</b>         | <b>33</b>     | <b>0,1</b>    | <b>0,1</b>   | <b>8,8</b>                               | <b>0,0</b>        | <b>8,8</b>   | <b>0,0</b>        |
| 10           | Cereals   | 43                | 30            | 0,1           | 0,1          | -28,9                                    | 0,0               | -28,9        | 0,0               |
| <b>100</b>   | <b>Mineral fuels and oils</b>   | <b>3 095</b>      | <b>3 867</b>  | <b>7,2</b>    | <b>8,5</b>   | <b>24,9</b>                              | <b>1,8</b>        | <b>24,9</b>  | <b>1,8</b>        |
| 27           | Mineral fuel/oils and products of their distillation; bituminous substances; mineral waxes  | 3 095             | 3 867         | 7,2           | 8,5          | 24,9                                     | 1,8               | 24,9         | 1,8               |
| 200          | Chemicals   | 5 343             | 5 659         | 12,5          | 12,5         | 5,9                                      | 0,7               | 5,9          | 0,7               |
| 39           | Plastics and articles thereof   | 1 990             | 2 069         | 4,6           | 4,6          | 4,0                                      | 0,2               | 4,0          | 0,2               |
| 40           | Rubber and articles thereof   | 916               | 1 021         | 2,1           | 2,3          | 11,5                                     | 0,2               | 11,5         | 0,2               |
| 29           | Organic chemicals   | 837               | 904           | 2,0           | 2,0          | 8,0                                      | 0,2               | 8,0          | 0,2               |
| 30           | Pharmaceutical products   | 570               | 646           | 1,3           | 1,4          | 13,3                                     | 0,2               | 13,3         | 0,2               |
| 38           | Miscellaneous chemical products   | 296               | 256           | 0,7           | 0,6          | -13,5                                    | -0,1              | -13,5        | -0,1              |
| 32           | Tanning/dyeing extracts; tannins & derivatives; colouring matter; paints & varnishes; mastics; inks   | 176               | 171           | 0,4           | 0,4          | -3,1                                     | 0,0               | -3,1         | 0,0               |
| 34           | Soaps, surf. waxes, emuls, modelling pastes, 'dental waxes' and dental preparations, washing/fabricating/polishing or scouring prep.        | 141               | 162           | 0,3           | 0,4          | 14,8                                     | 0,0               | 14,8         | 0,0               |
| 33           | Essential oils and resinoids; perfumery, cosmetic or toilet preparations  | 136               | 133           | 0,3           | 0,3          | -2,0                                     | 0,0               | -2,0         | 0,0               |
| 31           | Fertilisers   | 124               | 130           | 0,3           | 0,3          | 4,9                                      | 0,0               | 4,9          | 0,0               |
| <b>35</b>    | <b>Albuminoidal substances; modified starches; glues; enzymes</b>   | <b>72</b>         | <b>87</b>     | <b>0,2</b>    | <b>0,2</b>   | <b>20,8</b>                              | <b>0,0</b>        | <b>20,8</b>  | <b>0,0</b>        |
| 28           | Inorganic chemicals; organic or inorganic compounds of precious metals/rare earth metals/radioactive elements/isotopes                      | 74                | 70            | 0,2           | 0,2          | -5,2                                     | 0,0               | -5,2         | 0,0               |
| 300          | Wood, cork and paper  | 3 603             | 3 682         | 8,4           | 8,1          | 2,2                                      | 0,2               | 2,2          | 0,2               |
| 48           | Paper and paperboard; articles of paper pulp, of paper or of paperboard   | 1 568             | 1 604         | 3,7           | 3,5          | 2,3                                      | 0,1               | 2,3          | 0,1               |
| 45           | Cork and articles of cork   | 812               | 846           | 1,9           | 1,9          | 4,1                                      | 0,1               | 4,1          | 0,1               |
| 44           | Wood and articles of wood; wood charcoal  | 620               | 622           | 1,4           | 1,4          | 0,3                                      | 0,0               | 0,3          | 0,0               |
| <b>47</b>    | <b>Pulp of wood or of other fibrous cellulose material; recovered (waste and scrap) paper or paperboard</b>                                 | <b>532</b>        | <b>536</b>    | <b>1,2</b>    | <b>1,2</b>   | <b>-0,5</b>                              | <b>0,0</b>        | <b>-0,5</b>  | <b>0,0</b>        |
| 49           | Printed books, newspapers, pictures and other products of the printing industry; manuscripts, typescripts and plans                         | 69                | 79            | 0,2           | 0,2          | 13,2                                     | 0,0               | 13,2         | 0,0               |
| 400          | Hides, leather and textiles   | 1 865             | 1 840         | 4,4           | 4,1          | -1,4                                     | -0,1              | -1,4         | -0,1              |
| 60           | Other made-up textile articles; sets; worn clothing and worn textile articles; rags   | 527               | 507           | 1,2           | 1,1          | -3,8                                     | 0,0               | -3,8         | 0,0               |
| 55           | Man-made staple fibres  | 258               | 222           | 0,6           | 0,5          | -13,7                                    | -0,1              | -13,7        | -0,1              |
| 56           | Wadding, felt and nonwovens; special yarns; twine, cordage, ropes and cables and articles thereof   | 204               | 212           | 0,5           | 0,5          | 3,9                                      | 0,0               | 3,9          | 0,0               |
| 59           | Impregnated, coated, covered or laminated textile fabrics; textile articles for industrial use  | 152               | 175           | 0,4           | 0,4          | 15,5                                     | 0,1               | 15,5         | 0,1               |
| 52           | Cotton  | 175               | 144           | 0,4           | 0,3          | -17,2                                    | -0,1              | -17,2        | -0,1              |
| 60           | Knitted or crocheted fabrics  | 113               | 114           | 0,3           | 0,3          | 0,5                                      | 0,0               | 0,5          | 0,0               |
| 42           | Articles of leather; saddlery and harness; travel goods; handbags and similar containers; articles of animal gut (other than silk-worm gut) | 67                | 85            | 0,2           | 0,2          | 26,8                                     | 0,0               | 26,8         | 0,0               |
| 41           | Raw hides and skins (other than furskins) and leather   | 73                | 79            | 0,2           | 0,2          | 8,5                                      | 0,0               | 8,5          | 0,0               |
| 58           | Special woven fabrics; tufted textile fabrics; lace; tapestries; trimmings; embroidery  | 79                | 78            | 0,2           | 0,2          | -0,2                                     | 0,0               | -0,2         | 0,0               |
| 57           | Carpets and other textile floor coverings   | 62                | 67            | 0,1           | 0,1          | 7,8                                      | 0,0               | 7,8          | 0,0               |
| <b>54</b>    | <b>Man-made filaments; strip and the like of man-made textile materials</b>   | <b>68</b>         | <b>67</b>     | <b>0,2</b>    | <b>0,1</b>   | <b>-1,0</b>                              | <b>0,0</b>        | <b>-1,0</b>  | <b>0,0</b>        |
| 51           | Wool, fine or coarse animal hair; horsehair yarn and woven fabric   | 62                | 64            | 0,1           | 0,1          | 3,6                                      | 0,0               | 3,6          | 0,0               |
| 500          | Clothing and footwear   | 4 070             | 4 167         | 9,5           | 9,2          | 2,4                                      | 0,2               | 2,4          | 0,2               |
| 64           | Footwear, gaiters and the like; parts of such articles  | 1 584             | 1 651         | 3,7           | 3,6          | 4,2                                      | 0,2               | 4,2          | 0,2               |
| 61           | Articles of apparel and clothing accessories, knitted or crocheted  | 1 608             | 1 598         | 3,8           | 3,5          | -0,7                                     | 0,0               | -0,7         | 0,0               |
| <b>62</b>    | <b>Articles of apparel and clothing accessories, not knitted or crocheted</b>   | <b>840</b>        | <b>874</b>    | <b>2,0</b>    | <b>1,9</b>   | <b>4,0</b>                               | <b>0,1</b>        | <b>4,0</b>   | <b>0,1</b>        |
| 65           | Headgear and parts thereof  | 28                | 36            | 0,1           | 0,1          | 28,7                                     | 0,0               | 28,7         | 0,0               |
| 600          | Ores and metals   | 4 806             | 5 292         | 11,2          | 11,7         | 10,1                                     | 1,1               | 10,1         | 1,1               |
| 73           | Articles of iron or steel   | 1 106             | 1 311         | 2,6           | 2,9          | 18,5                                     | 0,5               | 18,5         | 0,5               |
| 72           | Iron and steel  | 1 170             | 1 207         | 2,7           | 2,7          | 3,2                                      | 0,1               | 3,2          | 0,1               |
| 71           | Natural/cultured pearls, precious stones, precious metals and articles thereof; imitation jewellery; coin                                   | 647               | 806           | 1,5           | 1,8          | 24,7                                     | 0,4               | 24,7         | 0,4               |
| 76           | Aluminium and articles thereof  | 467               | 477           | 1,1           | 1,1          | 2,3                                      | 0,0               | 2,3          | 0,0               |
| 26           | Ores, slag and ash  | 469               | 469           | 1,1           | 1,0          | 0,1                                      | 0,0               | 0,1          | 0,0               |
| 25           | Salt; sulphur; earths and stone; plastering materials, lime and cement  | 256               | 291           | 0,6           | 0,6          | 13,7                                     | 0,1               | 13,7         | 0,1               |
| 83           | Miscellaneous articles of base metal  | 247               | 271           | 0,6           | 0,6          | 9,8                                      | 0,1               | 9,8          | 0,1               |
| <b>74</b>    | <b>Copper and articles thereof</b>  | <b>256</b>        | <b>265</b>    | <b>0,6</b>    | <b>0,6</b>   | <b>3,7</b>                               | <b>0,0</b>        | <b>3,7</b>   | <b>0,0</b>        |
| 82           | Tools, implements, cutlery, spoons and forks, of base metal; parts thereof of base metal  | 146               | 161           | 0,3           | 0,4          | 9,7                                      | 0,0               | 9,7          | 0,0               |
| 700          | Machinery   | 6 263             | 6 855         | 14,6          | 15,1         | 9,5                                      | 1,4               | 9,5          | 1,4               |
| <b>85</b>    | <b>Electrical machinery and equipment; sound recorders/reproducers; parts and accessories thereof</b>                                       | <b>3 780</b>      | <b>3 925</b>  | <b>8,8</b>    | <b>8,7</b>   | <b>3,8</b>                               | <b>0,3</b>        | <b>3,8</b>   | <b>0,3</b>        |
| 84           | Nuclear reactors, boilers, machinery and mechanical appliances; parts thereof   | 2 482             | 2 930         | 5,8           | 6,5          | 18,1                                     | 1,0               | 18,1         | 1,0               |
| 800          | Transport equipment   | 5 556             | 5 294         | 13,0          | 11,7         | -4,7                                     | -0,6              | -4,7         | -0,6              |
| 87           | Vehicles other than railway or tramway rolling stock, and parts and accessories thereof   | 5 331             | 5 036         | 12,4          | 11,1         | -5,5                                     | -0,7              | -5,5         | -0,7              |
| <b>88</b>    | <b>Aircraft, spacecraft, and parts thereof</b>  | <b>166</b>        | <b>138</b>    | <b>0,4</b>    | <b>0,3</b>   | <b>-17,1</b>                             | <b>-0,1</b>       | <b>-17,1</b> | <b>-0,1</b>       |
| 89           | Ships, boats and floating structures  | 49                | 104           | 0,1           | 0,2          | 112,9                                    | 0,1               | 112,9        | 0,1               |
| 900          | Other manufactured goods  | 3 364             | 3 483         | 7,8           | 7,7          | 3,5                                      | 0,3               | 3,5          | 0,3               |
| 94           | Furniture; lamps/lighting fittings, nes.; illuminated signs/nameplates and the like; prefab. buildings                                      | 1 213             | 1 274         | 2,8           | 2,8          | 5,1                                      | 0,1               | 5,1          | 0,1               |
| 69           | Ceramic products  | 562               | 569           | 1,3           | 1,3          | 1,3                                      | 0,0               | 1,3          | 0,0               |
| 70           | Glass and glassware   | 502               | 487           | 1,2           | 1,1          | -3,0                                     | 0,0               | -3,0         | 0,0               |
| 90           | Optical/photographic/cinematographic/measuring/checking/precision/medical/surgical instruments and apparatus                                | 387               | 452           | 0,9           | 1,0          | 16,7                                     | 0,2               | 16,7         | 0,2               |
| 98           | Articles of stone, plaster, cement, asbestos, mica or similar materials   | 382               | 393           | 0,9           | 0,9          | 2,7                                      | 0,0               | 2,7          | 0,0               |
| 91           | Clocks and watches and parts thereof  | 73                | 86            | 0,2           | 0,2          | 18,1                                     | 0,0               | 18,1         | 0,0               |
| 96           | Miscellaneous manufactured articles   | 53                | 77            | 0,1           | 0,2          | 46,2                                     | 0,1               | 46,2         | 0,1               |

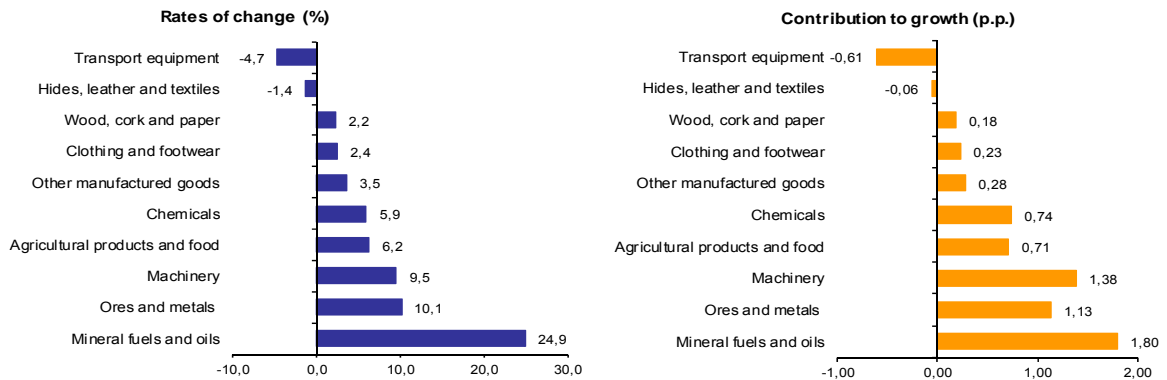
Memo: Total without Energy Products | 39 775 | 41 481 | 92,8 | 91,5 | 4,3 | 4,0 | 4,3 | 4,0

Source: GEE, based on data on International Trade statistics from Statistics Portugal (most up-to-date versions available). Estimates for operators under the assimilation threshold and non-responses are included in Intra-EU trade.

Notes:  
 \* Sum of Exports to EU and Exports to third countries.  
 Composition by Group of Products - 000 (Chap. 01 to 24 of CN) - 200 (Chap. 27) - 220 (Chap. 28 to 40) - 300 (Chap. 44 to 49) - 400 (Chap. 41 to 43, 50 to 60 and 63) - 500 (Chap. 61, 62, 64 to 67) - 600 (Chap. 25, 26, 71 to 83) - 700 (Chap. 84 and 85) - 800 (Chap. 86 to 89) - 900 (Chap. 68 to 70 and 90 to 99).  
 [1] 12 months ending in december 2012  
 [2] (jan 12-dec 12)/(jan 11-dec 11) x 100 - 100  
 [3] Contribution to the growth rate of exports, shift share analysis: (rate of change) x (weight in the previous period) x 100.

**Chart 2 - Growth rates of exports of Portuguese goods by group of products and its contribution to growth (Intra + Extra-EU)**

Previous 12 months ending in december 2012



Source: Table 5 – Portuguese Exports (Intra + Extra EU) of Goods by Group of Products.

**Table 4 - Portuguese Exports of Goods by Group of Products (Extra-EU)**

Preliminary data version of january to december 2012

| Group of Products                  | january to december |               | y.o.y., %                     |               | Structure (%)                 |              |              |
|------------------------------------|---------------------|---------------|-------------------------------|---------------|-------------------------------|--------------|--------------|
|                                    | 2011                | 2012          | Last 12 months <sup>[1]</sup> | jan-dec 12/11 | Last 12 months <sup>[1]</sup> | jan-dec      |              |
|                                    |                     |               | months <sup>[1]</sup>         | 12/11         | months <sup>[1]</sup>         | 2011         | 2012         |
| <b>Total Exports</b>               | <b>10 960</b>       | <b>13 130</b> | <b>19,8</b>                   | <b>19,8</b>   | <b>100,0</b>                  | <b>100,0</b> | <b>100,0</b> |
| 000 Agricultural products and food | 1 482               | 1 644         | 10,9                          | 10,9          | 12,5                          | 13,5         | 12,5         |
| 100 Mineral fuels and oils         | 1 763               | 2 118         | 20,2                          | 20,2          | 16,1                          | 16,1         | 16,1         |
| 200 Chemicals                      | 1 227               | 1 319         | 7,5                           | 7,5           | 10,0                          | 11,2         | 10,0         |
| 300 Wood, cork and paper           | 1 055               | 1 116         | 5,8                           | 5,8           | 8,5                           | 9,6          | 8,5          |
| 400 Hides, leather and textiles    | 509                 | 531           | 4,3                           | 4,3           | 4,0                           | 4,6          | 4,0          |
| 500 Clothing and footwear          | 327                 | 389           | 18,8                          | 18,8          | 3,0                           | 3,0          | 3,0          |
| 600 Ores and metals                | 1 231               | 1 682         | 36,6                          | 36,6          | 12,8                          | 11,2         | 12,8         |
| 700 Machinery                      | 1 913               | 2 412         | 26,1                          | 26,1          | 18,4                          | 17,5         | 18,4         |
| 800 Transport equipment            | 621                 | 933           | 50,2                          | 50,2          | 7,1                           | 5,7          | 7,1          |
| 900 Other manufactured goods       | 832                 | 986           | 18,6                          | 18,6          | 7,5                           | 7,6          | 7,5          |

Memo:

|                                      |       |        |      |      |      |      |      |
|--------------------------------------|-------|--------|------|------|------|------|------|
| <i>Total without Energy Products</i> | 9 197 | 11 012 | 19,7 | 19,7 | 83,9 | 83,9 | 83,9 |
|--------------------------------------|-------|--------|------|------|------|------|------|

Source: GEE, based on data on International Trade statistics from Statistics Portugal (most up-to-date versions available).

Note:

Composition by Group of Products - 000 (Chap. 01 to 24 of CN) - 100 (Chap. 27) - 200 (Chap. 28 to 40) - 300 (Chap. 44 to 49) - 400 (Chap. 41 to 43, 50 to 60 and 63) - 500 (Chap. 61, 62, 64 to 67) - 600 (Chap. 25, 26, 71 to 83) - 700 (Chap. 84 and 85) - 800 (Chap. 86 to 89) - 900 (Chap. 68 to 70 and 90 to 99).

[1] 12 months ending in december 2012

**Table 5 – Exports (Intra+Extra EU) of Portuguese goods by Group of Products (2007-2012)  
sorted in descending order of their relative weight in 2011**

**Growth rate and Contribution to growth**

| <b>Intra + Extra EU (Fob)</b> |  | Share<br>in 2011<br>(%) | y.o.y., %   |              |              |             |             | Contrib. (p.p.) <sup>[1]</sup> |             |                 |
|-------------------------------|--|-------------------------|-------------|--------------|--------------|-------------|-------------|--------------------------------|-------------|-----------------|
| Grp.<br>and<br>CN-2           | Description  |                         | 2007        | 2008         | 2009         | 2010        | 2011        | jan-dec<br>2012                | 2011        | jan-dec<br>2012 |
|                               |  |                         |             | <b>TOTAL</b> | <b>100,0</b> | <b>7,4</b>  | <b>1,4</b>  | <b>-18,4</b>                   | <b>17,6</b> | <b>15,0</b>     |
| <b>700</b>                    | <b>Machinery</b>   | <b>14,6</b>             | <b>7,6</b>  | <b>-0,8</b>  | <b>-31,0</b> | <b>8,7</b>  | <b>11,4</b> | <b>9,5</b>                     | <b>1,7</b>  | <b>1,4</b>      |
| 85                            | Electrical machinery and equipment; sound recorders/reproducers; parts and accessories thereof | 8,8                     | 9,3         | -1,4         | -37,4        | 18,1        | 13,4        | 3,8                            | 1,2         | 0,3             |
| 84                            | Nuclear reactors, boilers, machinery and mechanical appliances; parts thereof                  | 5,8                     | 5,1         | 0,0          | -21,4        | -2,6        | 8,6         | 18,1                           | 0,5         | 1,0             |
| <b>800</b>                    | <b>Transport equipment</b>   | <b>13,0</b>             | <b>2,8</b>  | <b>-2,7</b>  | <b>-21,4</b> | <b>22,0</b> | <b>22,4</b> | <b>-4,7</b>                    | <b>2,7</b>  | <b>-0,6</b>     |
| 87                            | Vehicles other than railway or tramway rolling stock, and parts and accessories thereof        | 12,4                    | -0,7        | -3,5         | -19,5        | 22,3        | 23,4        | -5,5                           | 2,7         | -0,7            |
| <b>200</b>                    | <b>Chemicals</b>   | <b>12,5</b>             | <b>10,1</b> | <b>2,4</b>   | <b>-14,6</b> | <b>24,6</b> | <b>20,8</b> | <b>5,9</b>                     | <b>2,5</b>  | <b>0,7</b>      |
| 39                            | Plastics and articles thereof  | 4,6                     | 12,9        | 0,8          | -16,5        | 27,9        | 14,1        | 4,0                            | 0,7         | 0,2             |
| <b>000</b>                    | <b>Agricultural products and food</b>  | <b>11,4</b>             | <b>17,1</b> | <b>15,0</b>  | <b>-5,0</b>  | <b>9,3</b>  | <b>12,3</b> | <b>6,2</b>                     | <b>1,4</b>  | <b>0,7</b>      |
| <b>600</b>                    | <b>Ores and metals</b>   | <b>11,2</b>             | <b>11,5</b> | <b>-1,5</b>  | <b>-23,9</b> | <b>27,3</b> | <b>21,0</b> | <b>10,1</b>                    | <b>2,2</b>  | <b>1,1</b>      |
| <b>500</b>                    | <b>Clothing and footwear</b>   | <b>9,5</b>              | <b>1,9</b>  | <b>-2,8</b>  | <b>-11,4</b> | <b>7,9</b>  | <b>8,9</b>  | <b>2,4</b>                     | <b>0,9</b>  | <b>0,2</b>      |
| 61                            | Articles of apparel and clothing accessories, knitted or crocheted                             | 3,8                     | 0,6         | -5,5         | -11,9        | 4,7         | 4,6         | -0,7                           | 0,2         | 0,0             |
| 64                            | Footwear, gaiters and the like; parts of such articles   | 3,7                     | 2,7         | 2,6          | -8,2         | 9,9         | 12,9        | 4,2                            | 0,5         | 0,2             |
| <b>300</b>                    | <b>Wood, cork and paper</b>  | <b>8,4</b>              | <b>-3,5</b> | <b>1,9</b>   | <b>-12,1</b> | <b>25,1</b> | <b>7,8</b>  | <b>2,2</b>                     | <b>0,7</b>  | <b>0,2</b>      |
| 48                            | Paper and paperboard; articles of paper pulp, of paper or of paperboard                        | 3,7                     | 0,2         | 8,3          | -4,5         | 35,3        | 6,3         | 2,3                            | 0,3         | 0,1             |
| <b>900</b>                    | <b>Other manufactured goods</b>  | <b>7,8</b>              | <b>29,6</b> | <b>-3,2</b>  | <b>-9,2</b>  | <b>6,0</b>  | <b>5,1</b>  | <b>3,5</b>                     | <b>0,4</b>  | <b>0,3</b>      |
| <b>100</b>                    | <b>Mineral fuels and oils</b>  | <b>7,2</b>              | <b>-8,6</b> | <b>25,1</b>  | <b>-28,4</b> | <b>54,7</b> | <b>29,4</b> | <b>24,9</b>                    | <b>1,9</b>  | <b>1,8</b>      |
| 27                            | Mineral fuel/oils and products of their distillation; bituminous substances; mineral waxes     | 7,2                     | -8,6        | 25,1         | -28,4        | 54,7        | 29,4        | 24,9                           | 1,9         | 1,8             |
| <b>400</b>                    | <b>Hides, leather and textiles</b>   | <b>4,4</b>              | <b>3,7</b>  | <b>-5,6</b>  | <b>-16,3</b> | <b>16,2</b> | <b>11,5</b> | <b>-1,4</b>                    | <b>0,5</b>  | <b>-0,1</b>     |

Source: GEE, based on data on International Trade statistics from Statistics Portugal (most up-to-date versions available). Estimates for operators under the assimilation threshold and non-responses are included in Intra-EU trade.

Note:

[1] Contributions to growth, shift share analysis: (rate of change) x (weight in the previous period) ÷ 100.

**Table 6 – Exports (Intra+Extra EU) of goods to selected markets**

Preliminary data version of January to December 2012

| Destination          | jan-dec       |               | Structure (%) |              | Growth rates and contributions to growth |                              |             |                              |
|----------------------|---------------|---------------|---------------|--------------|--|------------------------------|-------------|------------------------------|
|                      |               |               | jan-dec       |              | Last 12 months <sup>[1]</sup>            |                              | jan-dec     |                              |
|                      | 2011          | 2012          | 2011          | 2012         | y.o.y., % <sup>[2]</sup>                 | Contrib. p.p. <sup>[3]</sup> | y.o.y., %   | Contrib. p.p. <sup>[3]</sup> |
|                      |               |               |               |              |  |                              |             |                              |
| <b>TOTAL</b>         | <b>42 870</b> | <b>45 347</b> | <b>100,0</b>  | <b>100,0</b> | <b>5,8</b>                               | <b>5,8</b>                   | <b>5,8</b>  | <b>5,8</b>                   |
| <b>INTRA EU(27)</b>  | <b>31 910</b> | <b>32 218</b> | <b>74,4</b>   | <b>71,0</b>  | <b>1,0</b>                               | <b>0,7</b>                   | <b>1,0</b>  | <b>0,7</b>                   |
| of which:            |               |               |               |              |  |                              |             |                              |
| <b>EU-15</b>         | <b>30 580</b> | <b>30 780</b> | <b>71,3</b>   | <b>67,9</b>  | <b>0,7</b>                               | <b>0,5</b>                   | <b>0,7</b>  | <b>0,5</b>                   |
| Spain                | 10 680        | 10 194        | 24,9          | 22,5         | -4,5                                     | -1,1                         | -4,5        | -1,1                         |
| Germany              | 5 811         | 5 573         | 13,6          | 12,3         | -4,1                                     | -0,6                         | -4,1        | -0,6                         |
| France               | 5 213         | 5 352         | 12,2          | 11,8         | 2,7                                      | 0,3                          | 2,7         | 0,3                          |
| United Kingdom       | 2 234         | 2 391         | 5,2           | 5,3          | 7,0                                      | 0,4                          | 7,0         | 0,4                          |
| Netherlands          | 1 675         | 1 896         | 3,9           | 4,2          | 13,2                                     | 0,5                          | 13,2        | 0,5                          |
| Italy                | 1 567         | 1 681         | 3,7           | 3,7          | 7,3                                      | 0,3                          | 7,3         | 0,3                          |
| Belgium              | 1 350         | 1 403         | 3,1           | 3,1          | 3,9                                      | 0,1                          | 3,9         | 0,1                          |
| Sweden               | 443           | 464           | 1,0           | 1,0          | 4,7                                      | 0,0                          | 4,7         | 0,0                          |
| Denmark              | 270           | 307           | 0,6           | 0,7          | 13,7                                     | 0,1                          | 13,7        | 0,1                          |
| <b>Enlargement</b>   | <b>1 330</b>  | <b>1 437</b>  | <b>3,1</b>    | <b>3,2</b>   | <b>8,1</b>                               | <b>0,3</b>                   | <b>8,1</b>  | <b>0,3</b>                   |
| Poland               | 404           | 403           | 0,9           | 0,9          | -0,3                                     | 0,0                          | -0,3        | 0,0                          |
| <b>EXTRA EU(27)</b>  | <b>10 960</b> | <b>13 130</b> | <b>25,6</b>   | <b>29,0</b>  | <b>19,8</b>                              | <b>5,1</b>                   | <b>19,8</b> | <b>5,1</b>                   |
| of which:            |               |               |               |              |  |                              |             |                              |
| Angola               | 2 331         | 2 999         | 5,4           | 6,6          | 28,6                                     | 1,6                          | 28,6        | 1,6                          |
| United States        | 1 496         | 1 866         | 3,5           | 4,1          | 24,7                                     | 0,9                          | 24,7        | 0,9                          |
| Brazil               | 583           | 679           | 1,4           | 1,5          | 16,5                                     | 0,2                          | 16,5        | 0,2                          |
| Mexico               | 462           | 197           | 1,1           | 0,4          | -57,3                                    | -0,6                         | -57,3       | -0,6                         |
| China                | 397           | 779           | 0,9           | 1,7          | 96,3                                     | 0,9                          | 96,3        | 0,9                          |
| Morocco              | 389           | 460           | 0,9           | 1,0          | 18,3                                     | 0,2                          | 18,3        | 0,2                          |
| Switzerland          | 372           | 401           | 0,9           | 0,9          | 7,8                                      | 0,1                          | 7,8         | 0,1                          |
| Algeria              | 358           | 428           | 0,8           | 0,9          | 19,4                                     | 0,2                          | 19,4        | 0,2                          |
| Turkey               | 301           | 356           | 0,7           | 0,8          | 18,4                                     | 0,1                          | 18,4        | 0,1                          |
| Cape Verde           | 254           | 217           | 0,6           | 0,5          | -14,7                                    | -0,1                         | -14,7       | -0,1                         |
| <b>Memo:</b>         |               |               |               |              |  |                              |             |                              |
| Gibraltar            | 254           | 312           | 0,6           | 0,7          | 22,7                                     | 0,1                          | 22,7        | 0,1                          |
| ACPOL <sup>[4]</sup> | 2 913         | 3 621         | 6,8           | 8,0          | 24,3                                     | 1,7                          | 24,3        | 1,7                          |
| EFTA                 | 467           | 514           | 1,1           | 1,1          | 10,0                                     | 0,1                          | 10,0        | 0,1                          |

Source: GEE, based on data on International Trade statistics from Statistics Portugal (most up-to-date versions available). Estimates for operators under the assimilation threshold and non-responses are included in Intra-EU trade.

Notes:

Countries ranked in descending order of value in 2011.

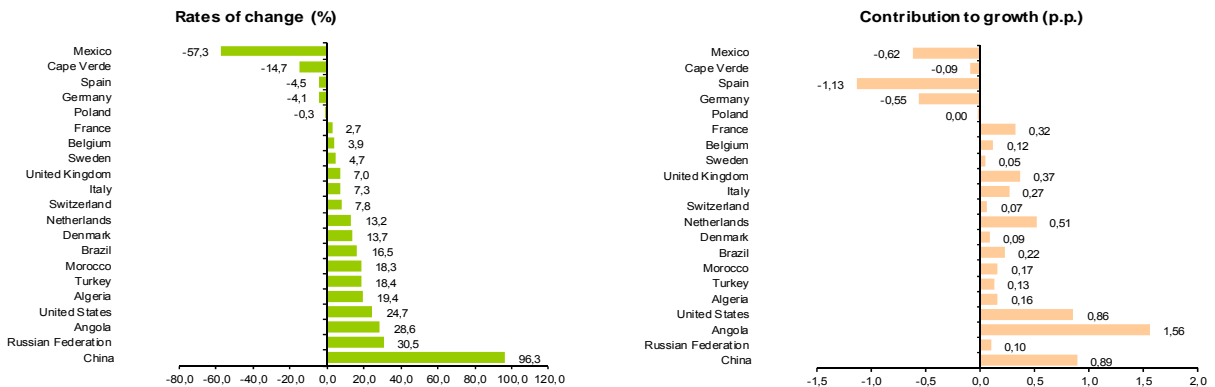
[1] 12 months ending in december 2012

[2] (jan 12-dec 12)/(jan 11-dec 11) x 100 - 100

[3] Contributions to growth, shift share analysis: (rate of change) x (weight in the previous period) ÷ 100.

[4] African Countries of Portuguese Official Language.

**Chart 3 - Growth rates of Exports (Intra + Extra-EU) to selected markets and corresponding contributions to growth Previous 12 months ending in december 2012**



Source: Table 8 – Exports (Intra+Extra EU) of goods from selected markets.

**Table 7 - Exports of goods to selected markets**  
Preliminary data version of january to december 2012

| Extra-EU (Fob)       |               | values in Millions of Euros |               |              |              |              |                               |               |
|----------------------|---------------|-----------------------------|---------------|--------------|--------------|--------------|-------------------------------|---------------|
| Destination          | jan-dec       |                             | Structure (%) |              |              |              | y.o.y., %                     |               |
|                      | 2011          | 2012                        | Annual        |              | jan-dec      |              | Last 12 months <sup>[1]</sup> | jan-dec 12/11 |
|                      |               |                             | 2006          | 2011         | 2011         | 2012         |                               |               |
| <b>EXTRA EU (27)</b> | <b>10 960</b> | <b>13 130</b>               | <b>100,0</b>  | <b>100,0</b> | <b>100,0</b> | <b>100,0</b> | <b>19,8</b>                   | <b>19,8</b>   |
| of which:            |               |                             |               |              |              |              |                               |               |
| Angola               | 2 331         | 2 999                       | 15,5          | 21,3         | 21,3         | 22,8         | 28,6                          | 28,6          |
| United States        | 1 496         | 1 866                       | 27,0          | 13,7         | 13,7         | 14,2         | 24,7                          | 24,7          |
| Brazil               | 583           | 679                         | 3,3           | 5,3          | 5,3          | 5,2          | 16,5                          | 16,5          |
| Mexico               | 462           | 197                         | 1,8           | 4,2          | 4,2          | 1,5          | -57,3                         | -57,3         |
| China                | 397           | 779                         | 2,7           | 3,6          | 3,6          | 5,9          | 96,3                          | 96,3          |
| Morocco              | 389           | 460                         | 2,1           | 3,6          | 3,6          | 3,5          | 18,3                          | 18,3          |
| Switzerland          | 372           | 401                         | 3,5           | 3,4          | 3,4          | 3,1          | 7,8                           | 7,8           |
| Algeria              | 358           | 428                         | 0,9           | 3,3          | 3,3          | 3,3          | 19,4                          | 19,4          |
| Turkey               | 301           | 356                         | 3,0           | 2,7          | 2,7          | 2,7          | 18,4                          | 18,4          |
| Cape Verde           | 254           | 217                         | 2,4           | 2,3          | 2,3          | 1,7          | -14,7                         | -14,7         |
| <b>Memo:</b>         |               |                             |               |              |              |              |                               |               |
| Gibraltar            | 254           | 312                         | 0,4           | 2,3          | 2,3          | 2,4          | 22,7                          | 22,7          |
| ACPOL <sup>[2]</sup> | 2 913         | 3 621                       | 19,6          | 26,6         | 26,6         | 27,6         | 24,3                          | 24,3          |
| EFTA                 | 467           | 514                         | 5,0           | 4,3          | 4,3          | 3,9          | 10,0                          | 10,0          |

Source: GEE, based on data on International Trade statistics from Statistics Portugal (most up-to-date versions available).

Note:

Countries ranked in descending order of value in 2011.

[1] (jan 12-dec 12)/(jan 11-dec 11) x 100 - 100

[2] African Countries of Portuguese Official Language.

**Table 8 - Exports (Intra + Extra-EU) of Portuguese Goods to a selection of markets (2007-2012) - structure (%)**

**Main markets in 2011**

| Destination         | 2007         | 2008         | 2009         | 2010         | 2011         | jan-dec      |              |
|---------------------|--------------|--------------|--------------|--------------|--------------|--------------|--------------|
|                     |              |              |              |              |              | 2011         | 2012         |
| <b>Total</b>        | <b>100,0</b> | <b>100,0</b> | <b>100,0</b> | <b>100,0</b> | <b>100,0</b> | <b>100,0</b> | <b>100,0</b> |
| <b>INTRA EU(27)</b> | <b>77,1</b>  | <b>74,4</b>  | <b>75,4</b>  | <b>75,4</b>  | <b>74,4</b>  | <b>74,4</b>  | <b>71,0</b>  |
| <b>EU-15</b>        | <b>74,7</b>  | <b>71,6</b>  | <b>72,5</b>  | <b>72,3</b>  | <b>71,3</b>  | <b>71,3</b>  | <b>67,9</b>  |
| Spain               | 28,7         | 27,9         | 27,2         | 27,0         | 24,9         | 24,9         | 22,5         |
| Germany             | 12,9         | 12,8         | 13,0         | 13,0         | 13,6         | 13,6         | 12,3         |
| France              | 12,6         | 11,8         | 12,4         | 12,0         | 12,2         | 12,2         | 11,8         |
| United Kingdom      | 6,0          | 5,5          | 5,6          | 5,5          | 5,2          | 5,2          | 5,3          |
| Netherlands         | 3,5          | 3,3          | 3,6          | 3,9          | 3,9          | 3,9          | 4,2          |
| Italy               | 4,1          | 3,7          | 3,7          | 3,7          | 3,7          | 3,7          | 3,7          |
| Belgium             | 2,6          | 2,5          | 2,5          | 2,6          | 3,1          | 3,1          | 3,1          |
| <b>Enlargement</b>  | <b>2,4</b>   | <b>2,8</b>   | <b>2,8</b>   | <b>3,1</b>   | <b>3,1</b>   | <b>3,1</b>   | <b>3,2</b>   |
| <b>EXTRA EU(27)</b> | <b>22,9</b>  | <b>25,6</b>  | <b>24,6</b>  | <b>24,6</b>  | <b>25,6</b>  | <b>25,6</b>  | <b>29,0</b>  |
| Angola              | 4,4          | 5,8          | 7,1          | 5,1          | 5,4          | 5,4          | 6,6          |
| United States       | 4,7          | 3,4          | 3,2          | 3,5          | 3,5          | 3,5          | 4,1          |
| Brazil              | 0,7          | 0,8          | 0,9          | 1,2          | 1,4          | 1,4          | 1,5          |
| Mexico              | 0,3          | 0,6          | 0,6          | 1,1          | 1,1          | 1,1          | 0,4          |
| China               | 0,5          | 0,5          | 0,7          | 0,6          | 0,9          | 0,9          | 1,7          |
| Morocco             | 0,5          | 0,7          | 0,7          | 0,8          | 0,9          | 0,9          | 1,0          |
| Switzerland         | 0,7          | 0,8          | 0,9          | 0,9          | 0,9          | 0,9          | 0,9          |
| Algeria             | 0,2          | 0,5          | 0,6          | 0,6          | 0,8          | 0,8          | 0,9          |
| Turkey              | 0,6          | 0,6          | 0,6          | 0,7          | 0,7          | 0,7          | 0,8          |
| Cape Verde          | 0,6          | 0,7          | 0,7          | 0,7          | 0,6          | 0,6          | 0,5          |

Source: GEE, based on data on International Trade statistics from Statistics Portugal (most up-to-date versions available). Estimates for operators under the assimilation threshold and non-responses are included in Intra-EU trade.

**Table 9 - Exports (Intra + Extra-EU) of Portuguese Goods to a selection of markets (2008-2012) - structure (%), growth rate and contribution to growth [1]**

| Destination          | Share in 2011 (%) | y.o.y., %   |              |             |             |             | Contrib. (p.p.) <sup>[1]</sup> |              |
|----------------------|-------------------|-------------|--------------|-------------|-------------|-------------|--------------------------------|--------------|
|                      |                   | 2008        | 2009         | 2010        | 2011        | 2012        | 2011                           | jan-dec 2012 |
|                      |                   |             |              |             |             | jan-dec     |                                |              |
| <b>Total</b>         | <b>100,0</b>      | <b>1,4</b>  | <b>-18,4</b> | <b>17,6</b> | <b>15,0</b> | <b>5,8</b>  | <b>15,0</b>                    | <b>5,8</b>   |
| <b>INTRA EU (27)</b> | <b>74,4</b>       | <b>-2,1</b> | <b>-17,3</b> | <b>17,6</b> | <b>13,5</b> | <b>1,0</b>  | <b>10,2</b>                    | <b>0,7</b>   |
| <b>EU-15</b>         | <b>71,3</b>       | <b>-2,8</b> | <b>-17,4</b> | <b>17,2</b> | <b>13,5</b> | <b>0,7</b>  | <b>9,8</b>                     | <b>0,5</b>   |
| Spain                | 24,9              | -1,4        | -20,3        | 16,7        | 6,1         | -4,5        | 1,6                            | -1,1         |
| Germany              | 13,6              | -0,1        | -17,1        | 18,1        | 19,8        | -4,1        | 2,6                            | -0,6         |
| France               | 12,2              | -5,0        | -14,2        | 13,8        | 16,5        | 2,7         | 2,0                            | 0,3          |
| United Kingdom       | 5,2               | -8,1        | -15,8        | 14,0        | 9,6         | 7,0         | 0,5                            | 0,4          |
| Netherlands          | 3,9               | -3,6        | -10,2        | 25,6        | 16,3        | 13,2        | 0,6                            | 0,5          |
| Italy                | 3,7               | -9,4        | -17,1        | 16,1        | 13,7        | 7,3         | 0,5                            | 0,3          |
| Belgium              | 3,1               | -1,6        | -18,9        | 23,4        | 39,6        | 3,9         | 1,0                            | 0,1          |
| <b>Enlargement</b>   | <b>3,1</b>        | <b>19,2</b> | <b>-16,1</b> | <b>28,8</b> | <b>14,4</b> | <b>8,1</b>  | <b>0,4</b>                     | <b>0,3</b>   |
| <b>EXTRA EU (27)</b> | <b>25,6</b>       | <b>13,4</b> | <b>-21,5</b> | <b>17,4</b> | <b>19,6</b> | <b>19,8</b> | <b>4,8</b>                     | <b>5,1</b>   |
| Angola               | 5,4               | 34,3        | -0,8         | -15,0       | 22,3        | 28,6        | 1,1                            | 1,6          |
| United States        | 3,5               | -25,0       | -24,5        | 30,7        | 13,1        | 24,7        | 0,5                            | 0,9          |
| Brazil               | 1,4               | 23,9        | -7,9         | 49,2        | 32,7        | 16,5        | 0,4                            | 0,2          |
| Mexico               | 1,1               | 85,3        | -8,5         | 99,4        | 13,7        | -57,3       | 0,1                            | -0,6         |
| China                | 0,9               | 1,6         | 20,5         | 5,1         | 70,3        | 96,3        | 0,4                            | 0,9          |
| Morocco              | 0,9               | 37,1        | -21,2        | 40,3        | 28,8        | 18,3        | 0,2                            | 0,2          |
| Switzerland          | 0,9               | 12,6        | -3,5         | 15,2        | 11,7        | 7,8         | 0,1                            | 0,1          |
| Algeria              | 0,8               | 126,9       | 9,0          | 7,9         | 68,3        | 19,4        | 0,4                            | 0,2          |
| Turkey               | 0,7               | -2,1        | -8,0         | 32,0        | 12,6        | 18,4        | 0,1                            | 0,1          |
| Cape Verde           | 0,6               | 13,0        | -13,5        | 17,9        | -3,2        | -14,7       | 0,0                            | -0,1         |

Source: GEE, based on data on International Trade statistics from Statistics Portugal (most up-to-date versions available). Estimates for operators under the assimilation threshold and non-responses are included in Intra-EU trade.

Note:

[1] Contributions to growth, shift share analysis: (rate of change) x (weight in the previous period) ÷ 100.

## Imports\* of Goods

Table 10 - Portuguese Imports of goods by Group of Products

Of which: products by Chapter (CN-2) above 55 million euros in 2012

| Grip/<br>CN-2 | Groups of Products   | Millions of Euros |               | Structure (%) |              | Growth rates and contributions to growth |                      |              |                      |
|---------------|--|-------------------|---------------|---------------|--------------|--|----------------------|--------------|----------------------|
|               |  | jan-dec           |               | jan-dec       |              | Last 12 months <sup>[1]</sup>            |                      | jan-dec      |                      |
|               |  | 2011              | 2012          | 2011          | 2012         | y.o.y.<br>% <sup>[2]</sup>               | Contrib. p.p.<br>[3] | y.o.y.<br>%  | Contrib. p.p.<br>[3] |
|               | <b>TOTAL IMPORTS</b>   | <b>59 243</b>     | <b>56 015</b> | <b>100,0</b>  | <b>100,0</b> | <b>-5,4</b>                              | <b>-5,4</b>          | <b>-5,4</b>  | <b>-5,4</b>          |
| <b>000</b>    | <b>Agricultural products and food</b>  | <b>8 939</b>      | <b>8 746</b>  | <b>15,1</b>   | <b>15,6</b>  | <b>-2,2</b>                              | <b>-0,3</b>          | <b>-2,2</b>  | <b>-0,3</b>          |
| 03            | Fish and crustaceans, molluscs and other aquatic invertebrates   | 1 374             | 1 335         | 2,3           | 2,4          | -2,8                                     | -0,1                 | -2,8         | -0,1                 |
| 10            | Cereals  | 828               | 849           | 1,4           | 1,5          | 2,5                                      | 0,0                  | 2,5          | 0,0                  |
| 02            | Meat and edible meat offal   | 813               | 791           | 1,4           | 1,4          | -2,8                                     | 0,0                  | -2,8         | 0,0                  |
| 12            | Oil seeds/oleaginous fruits/miscellaneous grains, seeds and fruits/industrial or medicinal plants/straw and fodder                         | 565               | 608           | 1,0           | 1,1          | 7,6                                      | 0,1                  | 7,6          | 0,1                  |
| 15            | Animal/vegetable fats and oils and their cleavage products; prepared edible fats; animal/vegetable waxes                                   | 605               | 575           | 1,0           | 1,0          | -4,9                                     | -0,1                 | -4,9         | -0,1                 |
| 04            | Dairy produce; birds eggs; natural honey; edible products of animal origin, nes.   | 520               | 509           | 0,9           | 0,9          | -2,1                                     | 0,0                  | -2,1         | 0,0                  |
| 08            | Edible fruit and nuts; peel of citrus fruit or melons  | 477               | 449           | 0,8           | 0,8          | -5,9                                     | 0,0                  | -5,9         | 0,0                  |
| 19            | Preparations of cereals, flour, starch or milk; pastrycooks products   | 449               | 442           | 0,8           | 0,8          | -1,6                                     | 0,0                  | -1,6         | 0,0                  |
| 22            | Beverages, spirits and vinegar   | 409               | 383           | 0,7           | 0,7          | -6,6                                     | 0,0                  | -6,6         | 0,0                  |
| 23            | Residues and waste from the food industries; prepared animal fodder  | 361               | 361           | 0,6           | 0,6          | 0,0                                      | 0,0                  | 0,0          | 0,0                  |
| 21            | Miscellaneous edible preparations  | 359               | 329           | 0,6           | 0,6          | -8,3                                     | -0,1                 | -8,3         | -0,1                 |
| 17            | Sugars and sugar confectionery   | 315               | 287           | 0,5           | 0,5          | -8,7                                     | 0,0                  | -8,7         | 0,0                  |
| 07            | Edible vegetables and certain roots and tubers   | 300               | 275           | 0,5           | 0,5          | -8,3                                     | 0,0                  | -8,3         | 0,0                  |
| 20            | Preparations of vegetables, fruit, nuts or other parts of plants   | 285               | 274           | 0,5           | 0,5          | -3,7                                     | 0,0                  | -3,7         | 0,0                  |
| 09            | Coffee, tea, maté and spices   | 238               | 235           | 0,4           | 0,4          | -1,5                                     | 0,0                  | -1,5         | 0,0                  |
| 24            | Tobacco and manufactured tobacco substitutes   | 212               | 233           | 0,4           | 0,4          | 9,9                                      | 0,0                  | 9,9          | 0,0                  |
| 16            | Preparations of meat, of fish or of crustaceans, molluscs or other aquatic invertebrates   | 218               | 224           | 0,4           | 0,4          | 2,4                                      | 0,0                  | 2,4          | 0,0                  |
| 01            | Live animals   | 217               | 203           | 0,4           | 0,4          | -6,3                                     | 0,0                  | -6,3         | 0,0                  |
| 18            | Cocoa and cocoa preparations   | 168               | 155           | 0,3           | 0,3          | -7,6                                     | 0,0                  | -7,6         | 0,0                  |
| 11            | Products of the milling industry; malt; starches; inulin; wheat gluten   | 74                | 80            | 0,1           | 0,1          | 8,6                                      | 0,0                  | 8,6          | 0,0                  |
| 06            | Live trees and plants; bulbs, roots and the like; cut flowers and ornamental foliage   | 80                | 70            | 0,1           | 0,1          | -13,5                                    | 0,0                  | -13,5        | 0,0                  |
| <b>05</b>     | <b>Products of animal origin, not elsewhere specified or included</b>  | <b>46</b>         | <b>58</b>     | <b>0,1</b>    | <b>0,1</b>   | <b>25,1</b>                              | <b>0,0</b>           | <b>25,1</b>  | <b>0,0</b>           |
| 100           | Mineral fuels and oils   | 10 393            | 11 553        | 17,5          | 20,6         | 11,2                                     | 2,0                  | 11,2         | 2,0                  |
| <b>27</b>     | <b>Mineral fuel/oils and products of their distillation; bituminous substances; mineral waxes</b>  | <b>10 393</b>     | <b>11 553</b> | <b>17,5</b>   | <b>20,6</b>  | <b>11,2</b>                              | <b>2,0</b>           | <b>11,2</b>  | <b>2,0</b>           |
| 200           | Chemicals  | 9 420             | 9 339         | 15,9          | 16,7         | -0,9                                     | -0,1                 | -0,9         | -0,1                 |
| 39            | Plastics and articles thereof  | 2 457             | 2 347         | 4,1           | 4,2          | -4,5                                     | -0,2                 | -4,5         | -0,2                 |
| 30            | Pharmaceutical products  | 2 116             | 2 118         | 3,6           | 3,8          | 0,1                                      | 0,0                  | 0,1          | 0,0                  |
| 29            | Organic chemicals  | 1 132             | 1 429         | 1,9           | 2,6          | 26,2                                     | 0,5                  | 26,2         | 0,5                  |
| 40            | Rubber and articles thereof  | 839               | 769           | 1,4           | 1,4          | -8,3                                     | -0,1                 | -8,3         | -0,1                 |
| 38            | Miscellaneous chemical products  | 811               | 713           | 1,4           | 1,3          | -12,1                                    | -0,2                 | -12,1        | -0,2                 |
| 33            | Essential oils and resinoids; perfume, cosmetic or toilet preparations   | 541               | 504           | 0,9           | 0,9          | -6,8                                     | -0,1                 | -6,8         | -0,1                 |
| 32            | Tanning/dyeing extracts; tannins & derivatives; colouring matter; paints & varnishes; mastics; inks  | 522               | 477           | 0,9           | 0,9          | -8,5                                     | -0,1                 | -8,5         | -0,1                 |
| 34            | Soaps, artif. waxes, candles, modelling pastes, 'dental waxes' and dental preparations, washing/lubricating/polishing or scouring prep.    | 362               | 339           | 0,6           | 0,6          | -6,4                                     | 0,0                  | -6,4         | 0,0                  |
| 28            | Inorganic chemicals; organic or inorganic compounds of precious metals/rare-earth metals/radioactive elements/isotopes                     | 327               | 329           | 0,6           | 0,6          | 0,6                                      | 0,0                  | 0,6          | 0,0                  |
| 31            | Fertilisers  | 160               | 179           | 0,3           | 0,3          | 11,3                                     | 0,0                  | 11,3         | 0,0                  |
| <b>25</b>     | <b>Albuminoidal substances; modified starches; glues; enzymes</b>  | <b>89</b>         | <b>78</b>     | <b>0,1</b>    | <b>0,1</b>   | <b>-13,0</b>                             | <b>0,0</b>           | <b>-13,0</b> | <b>0,0</b>           |
| 300           | Hides, wood, cork and paper  | 2 756             | 2 381         | 4,7           | 4,3          | -13,6                                    | -0,6                 | -13,6        | -0,6                 |
| 48            | Paper and paperboard; articles of paper pulp, of paper or of paperboard  | 1 129             | 928           | 1,9           | 1,7          | -17,7                                    | -0,3                 | -17,7        | -0,3                 |
| 44            | Wood and articles of wood; wood charcoal   | 611               | 467           | 1,0           | 0,8          | -23,6                                    | -0,2                 | -23,6        | -0,2                 |
| 41            | Raw hides and skins (other than furskins) and leather  | 404               | 390           | 0,7           | 0,7          | -3,4                                     | 0,0                  | -3,4         | 0,0                  |
| 42            | Articles of leather; saddlery and harness; travel goods, handbags and similar containers; articles of animal gut (other than silkworm gut) | 222               | 241           | 0,4           | 0,4          | 8,5                                      | 0,0                  | 8,5          | 0,0                  |
| 49            | Printed books, newspapers, pictures and other products of the printing industry; manuscripts, typescripts and plans                        | 178               | 156           | 0,3           | 0,3          | -12,6                                    | 0,0                  | -12,6        | 0,0                  |
| <b>45</b>     | <b>Cork and articles of cork</b>   | <b>136</b>        | <b>132</b>    | <b>0,2</b>    | <b>0,2</b>   | <b>-2,9</b>                              | <b>0,0</b>           | <b>-2,9</b>  | <b>0,0</b>           |
| 400           | Textiles, clothing and footwear  | 4 006             | 3 629         | 6,8           | 6,5          | -9,4                                     | -0,6                 | -9,4         | -0,6                 |
| 62            | Articles of apparel and clothing accessories, not knitted or crocheted   | 858               | 802           | 1,4           | 1,4          | -6,5                                     | -0,1                 | -6,5         | -0,1                 |
| 61            | Articles of apparel and clothing accessories, knitted or crocheted   | 889               | 789           | 1,5           | 1,4          | -11,3                                    | -0,2                 | -11,3        | -0,2                 |
| 64            | Footwear, gaiters and the like; parts of such articles   | 568               | 540           | 1,0           | 1,0          | -4,8                                     | 0,0                  | -4,8         | 0,0                  |
| 52            | Cotton   | 439               | 339           | 0,7           | 0,6          | -22,7                                    | -0,2                 | -22,7        | -0,2                 |
| 54            | Man-made filaments; strip and the like of man-made textile materials   | 286               | 288           | 0,5           | 0,5          | 0,6                                      | 0,0                  | 0,6          | 0,0                  |
| 55            | Man-made staple fibres   | 251               | 205           | 0,4           | 0,4          | -18,2                                    | -0,1                 | -18,2        | -0,1                 |
| 63            | Other made-up textile articles; sets; worn clothing and worn textile articles; rags  | 154               | 123           | 0,3           | 0,2          | -20,6                                    | -0,1                 | -20,6        | -0,1                 |
| 51            | Wool, fine or coarse animal hair; horsehair yarn and woven fabric  | 114               | 103           | 0,2           | 0,2          | -9,9                                     | 0,0                  | -9,9         | 0,0                  |
| 59            | Impregnated, coated, covered or laminated textile fabrics; textile articles for industrial use   | 98                | 94            | 0,2           | 0,2          | -4,0                                     | 0,0                  | -4,0         | 0,0                  |
| 60            | Knitted or crocheted fabrics   | 78                | 78            | 0,1           | 0,1          | -0,3                                     | 0,0                  | -0,3         | 0,0                  |
| <b>56</b>     | <b>Wadding, felt and nonwovens; special yarns; twine, cordage, ropes and cables and articles thereof</b>                                   | <b>70</b>         | <b>65</b>     | <b>0,1</b>    | <b>0,1</b>   | <b>-6,6</b>                              | <b>0,0</b>           | <b>-6,6</b>  | <b>0,0</b>           |
| 500           | Ores and metals  | 5 206             | 4 574         | 8,8           | 8,2          | -12,1                                    | -1,1                 | -12,1        | -1,1                 |
| 72            | Iron and steel   | 2 069             | 1 834         | 3,5           | 3,3          | -11,3                                    | -0,4                 | -11,3        | -0,4                 |
| 71            | Articles of iron or steel  | 916               | 795           | 1,5           | 1,4          | -13,2                                    | -0,2                 | -13,2        | -0,2                 |
| 74            | Copper and articles thereof  | 660               | 555           | 1,1           | 1,0          | -16,0                                    | -0,2                 | -16,0        | -0,2                 |
| 76            | Aluminium and articles thereof   | 643               | 537           | 1,1           | 1,0          | -16,5                                    | -0,2                 | -16,5        | -0,2                 |
| 81            | Miscellaneous articles of base metal   | 247               | 239           | 0,4           | 0,4          | -3,2                                     | 0,0                  | -3,2         | 0,0                  |
| 73            | Natural/cultured pearls, precious stones, precious metals and articles thereof; imitation jewellery; coin                                  | 210               | 179           | 0,4           | 0,3          | -14,9                                    | -0,1                 | -14,9        | -0,1                 |
| 82            | Tools, implements, cutlery, spoons and forks, of base metal; parts thereof of base metal   | 174               | 170           | 0,3           | 0,3          | -2,7                                     | 0,0                  | -2,7         | 0,0                  |
| <b>25</b>     | <b>Salt; sulphur; earths and stone; plastering materials, lime and cement</b>  | <b>137</b>        | <b>130</b>    | <b>0,2</b>    | <b>0,2</b>   | <b>-5,1</b>                              | <b>0,0</b>           | <b>-5,1</b>  | <b>0,0</b>           |
| 600           | Machinery [4]  | 9 077             | 8 232         | 15,3          | 14,7         | -9,3                                     | -1,4                 | -9,3         | -1,4                 |
| 84            | Nuclear reactors, boilers, machinery and mechanical appliances; parts thereof  | 4 602             | 4 179         | 7,8           | 7,5          | -9,2                                     | -0,7                 | -9,2         | -0,7                 |
| <b>85</b>     | <b>Electrical machinery and equipment; sound recorders/reproducers; parts and accessories thereof</b>                                      | <b>4 475</b>      | <b>4 054</b>  | <b>7,6</b>    | <b>7,2</b>   | <b>-9,4</b>                              | <b>-0,7</b>          | <b>-9,4</b>  | <b>-0,7</b>          |
| 700           | Transport equipment [5]  | 6 304             | 4 713         | 10,6          | 8,4          | -25,2                                    | -2,7                 | -25,2        | -2,7                 |
| 87            | Vehicles other than railway or tramway rolling stock, and parts and accessories thereof  | 6 027             | 4 349         | 10,2          | 7,8          | -27,8                                    | -2,8                 | -27,8        | -2,8                 |
| <b>88</b>     | <b>Aircraft, spacecraft, and parts thereof</b>   | <b>211</b>        | <b>270</b>    | <b>0,4</b>    | <b>0,5</b>   | <b>28,3</b>                              | <b>0,1</b>           | <b>28,3</b>  | <b>0,1</b>           |
| 89            | Ships, boats and floating structures   | 41                | 72            | 0,1           | 0,1          | 76,6                                     | 0,1                  | 76,6         | 0,1                  |
| 800           | Other manufactured goods   | 3 142             | 2 848         | 5,3           | 5,1          | -9,4                                     | -0,5                 | -9,4         | -0,5                 |
| 90            | Optical/photographic/cinematographic/measuring/checking/precision/medical/surgical instruments and apparatus                               | 1 034             | 979           | 1,7           | 1,7          | -5,3                                     | -0,1                 | -5,3         | -0,1                 |
| 94            | Furniture; lamps & lighting fittings, nes.; illuminated signs/nameplates and the like; prefab. buildings                                   | 797               | 666           | 1,3           | 1,2          | -16,4                                    | -0,2                 | -16,4        | -0,2                 |
| 70            | Glass and glassware  | 341               | 284           | 0,6           | 0,5          | -16,6                                    | -0,1                 | -16,6        | -0,1                 |
| 95            | Toys, games and sports requisites; parts and accessories thereof   | 341               | 264           | 0,6           | 0,5          | -22,5                                    | -0,1                 | -22,5        | -0,1                 |
| 96            | Miscellaneous manufactured articles  | 93                | 221           | 0,2           | 0,4          | 137,2                                    | 0,2                  | 137,2        | 0,2                  |
| 68            | Articles of stone, plaster, cement, asbestos, mica or similar materials  | 175               | 145           | 0,3           | 0,3          | -16,7                                    | 0,0                  | -16,7        | 0,0                  |

Memo:

|                               |        |        |      |      |      |      |      |      |
|-------------------------------|--------|--------|------|------|------|------|------|------|
| Total without Energy Products | 48 850 | 44 462 | 82,5 | 79,4 | -9,0 | -7,4 | -9,0 | -7,4 |
|-------------------------------|--------|--------|------|------|------|------|------|------|

Source: GEE, based on data on International Trade statistics from Statistics Portugal (most up-to-date versions available). Estimates for operators under the assimilation threshold and non-responses are included in Intra-EU trade.

Notes:

\* Sum of Imports from EU and Imports from third countries.

Composition by Group of Products - 000 (Chap. 01 to 24 of CN) - 100 (Chap. 27) - 200 (Chap. 28 to 40) - 300 (Chap. 41 to 49) - 400 (Chap. 50 to 67) - 500 (Chap. 25, 26, 71 to 83) - 600 (Chap. 84 and 85) - 700 (Chap. 86 to 89) - 800 (Chap. 68 to 70 and 90 to 99).

[1] 12 months ending in december 2012

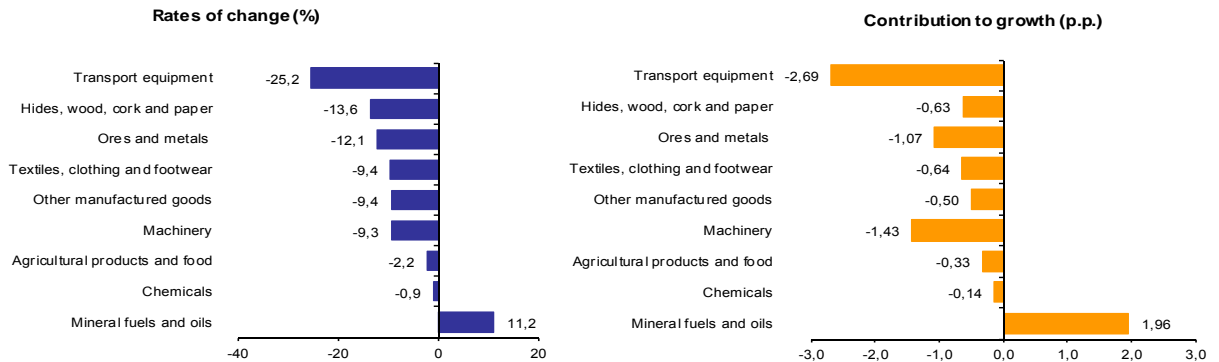
[2] (Jan 12-dec 12)/(Jan 11-dec 11) x 100 - 100

[3] Contribution to the growth rate of exports, shift share analysis: (rate of change) x (weight in the previous period) + 100.

[4] Does not include tractors.

[5] Includes tractors.

**Chart 4 - Growth rates of Portuguese Imports (Intra + Extra-EU) of goods by Group of Products and contribution to growth**  
**Previous 12 months ending in december 2012**



Source: Table 12 - Portuguese Imports of goods by Groups of Products.

**Table 11 - Imports of goods originating from selected markets**  
**Preliminary data version of january to december 2012**

| Country of Origin    | Intra + Extra-EU (Cif)      |               | Struture (%) |              | Growth rates and contributions to growth |                              |             |                              |
|----------------------|-----------------------------|---------------|--------------|--------------|--|------------------------------|-------------|------------------------------|
|                      | jan-dec                     |               | jan-dec      |              | Last 12 months <sup>[1]</sup>            |                              | jan-dec     |                              |
|                      | 2011                        | 2012          | 2011         | 2012         | y.o.y., % <sup>[2]</sup>                 | Contrib. p.p. <sup>[3]</sup> | y.o.y., %   | Contrib. p.p. <sup>[3]</sup> |
|                      | values in Millions of Euros |               |              |              |  |                              |             |                              |
| <b>TOTAL</b>         | <b>59 243</b>               | <b>56 015</b> | <b>100,0</b> | <b>100,0</b> | <b>-5,4</b>                              | <b>-5,4</b>                  | <b>-5,4</b> | <b>-5,4</b>                  |
| <b>INTRA EU (27)</b> | <b>43 624</b>               | <b>40 182</b> | <b>73,6</b>  | <b>71,7</b>  | <b>-7,9</b>                              | <b>-5,8</b>                  | <b>-7,9</b> | <b>-5,8</b>                  |
| of which:            |                             |               |              |              |  |                              |             |                              |
| <b>EU-15</b>         | <b>42 143</b>               | <b>38 690</b> | <b>71,1</b>  | <b>69,1</b>  | <b>-8,2</b>                              | <b>-5,8</b>                  | <b>-8,2</b> | <b>-5,8</b>                  |
| Spain                | 19 117                      | 17 790        | 32,3         | 31,8         | -6,9                                     | -2,2                         | -6,9        | -2,2                         |
| Germany              | 7 332                       | 6 414         | 12,4         | 11,5         | -12,5                                    | -1,6                         | -12,5       | -1,6                         |
| France               | 4 009                       | 3 651         | 6,8          | 6,5          | -8,9                                     | -0,6                         | -8,9        | -0,6                         |
| Italy                | 3 235                       | 2 992         | 5,5          | 5,3          | -7,5                                     | -0,4                         | -7,5        | -0,4                         |
| Netherlands          | 2 829                       | 2 735         | 4,8          | 4,9          | -3,3                                     | -0,2                         | -3,3        | -0,2                         |
| United Kingdom       | 1 973                       | 1 694         | 3,3          | 3,0          | -14,2                                    | -0,5                         | -14,2       | -0,5                         |
| Belgium              | 1 505                       | 1 422         | 2,5          | 2,5          | -5,5                                     | -0,1                         | -5,5        | -0,1                         |
| Sweden               | 624                         | 567           | 1,1          | 1,0          | -9,1                                     | -0,1                         | -9,1        | -0,1                         |
| Ireland              | 574                         | 551           | 1,0          | 1,0          | -4,1                                     | 0,0                          | -4,1        | 0,0                          |
| <b>Enlargement</b>   | <b>1 481</b>                | <b>1 493</b>  | <b>2,5</b>   | <b>2,7</b>   | <b>0,8</b>                               | <b>0,0</b>                   | <b>0,8</b>  | <b>0,0</b>                   |
| <b>EXTRA EU (27)</b> | <b>15 619</b>               | <b>15 832</b> | <b>26,4</b>  | <b>28,3</b>  | <b>1,4</b>                               | <b>0,4</b>                   | <b>1,4</b>  | <b>0,4</b>                   |
| of which:            |                             |               |              |              |  |                              |             |                              |
| Nigeria              | 1 529                       | 926           | 2,6          | 1,7          | -39,4                                    | -1,0                         | -39,4       | -1,0                         |
| China                | 1 500                       | 1 375         | 2,5          | 2,5          | -8,3                                     | -0,2                         | -8,3        | -0,2                         |
| Brazil               | 1 462                       | 1 369         | 2,5          | 2,4          | -6,4                                     | -0,2                         | -6,4        | -0,2                         |
| Angola               | 1 178                       | 1 781         | 2,0          | 3,2          | 51,3                                     | 1,0                          | 51,3        | 1,0                          |
| United States        | 1 134                       | 961           | 1,9          | 1,7          | -15,2                                    | -0,3                         | -15,2       | -0,3                         |
| Saudi Arabia         | 914                         | 890           | 1,5          | 1,6          | -2,6                                     | 0,0                          | -2,6        | 0,0                          |
| Kazakhstan           | 854                         | 759           | 1,4          | 1,4          | -11,1                                    | -0,2                         | -11,1       | -0,2                         |
| Algeria              | 776                         | 799           | 1,3          | 1,4          | 2,9                                      | 0,0                          | 2,9         | 0,0                          |
| Russian Federation   | 563                         | 476           | 1,0          | 0,8          | -15,5                                    | -0,1                         | -15,5       | -0,1                         |
| India                | 467                         | 336           | 0,8          | 0,6          | -28,0                                    | -0,2                         | -28,0       | -0,2                         |
| Norway               | 417                         | 148           | 0,7          | 0,3          | -64,4                                    | -0,5                         | -64,4       | -0,5                         |
| Switzerland          | 365                         | 333           | 0,6          | 0,6          | -8,5                                     | -0,1                         | -8,5        | -0,1                         |
| Japan                | 341                         | 295           | 0,6          | 0,5          | -13,7                                    | -0,1                         | -13,7       | -0,1                         |
| <b>Memo:</b>         |                             |               |              |              |  |                              |             |                              |
| OPEC <sup>[4]</sup>  | 4 611                       | 5 284         | 7,8          | 9,4          | 14,6                                     | 1,1                          | 14,6        | 1,1                          |
| EFTA                 | 802                         | 501           | 1,4          | 0,9          | -37,5                                    | -0,5                         | -37,5       | -0,5                         |
| ACPOL <sup>[5]</sup> | 1 230                       | 1 807         | 2,1          | 3,2          | 46,9                                     | 1,0                          | 46,9        | 1,0                          |

Source: GEE, based on data on International Trade statistics from Statistics Portugal (most up-to-date versions available). Estimates for operators under the assimilation threshold and non-responses are included in Intra-EU trade.

Notes:

Countries ranked in descending order of value in 2011.

[1] 12 months ending in december 2012

[2] (jan 12-dec 12)/(jan 11-dec 11) x 100 - 100

[3] Contributions to growth, shift share analysis: (rate of change) x (weight in the previous period) ÷ 100.

[4] Includes Angola.

[5] African Countries of Portuguese Official Language

**Table 12 - Portuguese Imports by Group of Products (Extra-EU)**  
 Preliminary data version of January to December 2012

| Extra-EU (Cif)                         |                     | values in Millions of Euros |                               |               |                               |              |              |
|--|---------------------|-----------------------------|-------------------------------|---------------|-------------------------------|--------------|--------------|
| Group of Products                      | January to December |                             | y.o.y., (%)                   |               | Structure (%)                 |              |              |
|  | 2011                | 2012                        | Last 12 months <sup>[1]</sup> | Jan-Dec 12/11 | Last 12 months <sup>[1]</sup> | Jan-Dec      |              |
|  |                     |                             | 2011                          | 2012          | 2011                          | 2012         |              |
| <b>Total Imports</b>                   | <b>15 619</b>       | <b>15 832</b>               | <b>1,4</b>                    | <b>1,4</b>    | <b>100,0</b>                  | <b>100,0</b> | <b>100,0</b> |
| 000 Agricultural products and food     | 2 139               | 1 984                       | -7,3                          | -7,3          | 12,5                          | 13,7         | 12,5         |
| 100 Mineral fuels and oils             | 7 963               | 8 918                       | 12,0                          | 12,0          | 56,3                          | 51,0         | 56,3         |
| 200 Chemicals                          | 1 273               | 1 299                       | 2,0                           | 2,0           | 8,2                           | 8,2          | 8,2          |
| 300 Hides, wood, cork and paper        | 408                 | 305                         | -25,1                         | -25,1         | 1,9                           | 2,6          | 1,9          |
| 400 Textiles, clothing and footwear    | 811                 | 650                         | -19,8                         | -19,8         | 4,1                           | 5,2          | 4,1          |
| 500 Ores and metals                    | 795                 | 587                         | -26,1                         | -26,1         | 3,7                           | 5,1          | 3,7          |
| 600 Machinery <sup>[2]</sup>           | 1 315               | 1 260                       | -4,2                          | -4,2          | 8,0                           | 8,4          | 8,0          |
| 700 Transport equipment <sup>[3]</sup> | 488                 | 486                         | -0,5                          | -0,5          | 3,1                           | 3,1          | 3,1          |
| 800 Other manufactured goods           | 425                 | 342                         | -19,5                         | -19,5         | 2,2                           | 2,7          | 2,2          |
| <b>Memo:</b>                           |                     |                             |                               |               |                               |              |              |
| Total without Energy Products          | 7 656               | 6 915                       | -9,7                          | -9,7          | 43,7                          | 49,0         | 43,7         |

Source: GEE, based on data on International Trade statistics from Statistics Portugal (most up-to-date versions available).

Notes:

Composition by Group of Products - 000 (Chap. 01 to 24 of CN) - 100 (Chap. 27) - 200 (Chap. 28 to 40) - 300 (Chap. 41 to 49) - 400 (Chap. 50 to 67) - 500 (Chap. 25, 26, 71 to 83) - 600 (Chap. 84 and 85) - 700 (Chap. 86 to 89) - 800 (Chap. 68 to 70 and 90 to 99).

[1] 12 months ending in December 2012

[2] Does not include farm tractors.

[3] Includes farm tractors.

**Table 13 - Imports of goods from selected markets**  
 Preliminary data version of January to December 2012

| Extra-EU (Cif)       |               | values in Millions of Euros |               |              |              |              |                               |               |
|----------------------|---------------|-----------------------------|---------------|--------------|--------------|--------------|-------------------------------|---------------|
| Country of Origin    | Jan-Dec       |                             | Structure (%) |              |              |              | y.o.y., %                     |               |
|                      | 2011          | 2012                        | Annual        |              | Jan-Dec      |              | Last 12 months <sup>[1]</sup> | Jan-Dec 12/11 |
|                      |               |                             | 2006          | 2011         | 2011         | 2012         |                               |               |
| <b>EXTRA EU(27)</b>  | <b>15 619</b> | <b>15 832</b>               | <b>100,0</b>  | <b>100,0</b> | <b>100,0</b> | <b>100,0</b> | <b>1,4</b>                    | <b>1,4</b>    |
| of which:            |               |                             |               |              |              |              |                               |               |
| Nigeria              | 1 529         | 926                         | 6,0           | 9,8          | 9,8          | 5,8          | -39,4                         | -39,4         |
| China                | 1 500         | 1 375                       | 6,0           | 9,6          | 9,6          | 8,7          | -8,3                          | -8,3          |
| Brazil               | 1 462         | 1 369                       | 9,5           | 9,4          | 9,4          | 8,6          | -6,4                          | -6,4          |
| Angola               | 1 178         | 1 781                       | 0,4           | 7,5          | 7,5          | 11,3         | 51,3                          | 51,3          |
| United States        | 1 134         | 961                         | 6,0           | 7,3          | 7,3          | 6,1          | -15,2                         | -15,2         |
| Saudi Arabia         | 914           | 890                         | 4,1           | 5,9          | 5,9          | 5,6          | -2,6                          | -2,6          |
| Kazakhstan           | 854           | 759                         | 2,6           | 5,5          | 5,5          | 4,8          | -11,1                         | -11,1         |
| Algeria              | 776           | 799                         | 6,9           | 5,0          | 5,0          | 5,0          | 2,9                           | 2,9           |
| Russian Federation   | 563           | 476                         | 5,0           | 3,6          | 3,6          | 3,0          | -15,5                         | -15,5         |
| India                | 467           | 336                         | 1,8           | 3,0          | 3,0          | 2,1          | -28,0                         | -28,0         |
| Norway               | 417           | 148                         | 5,3           | 2,7          | 2,7          | 0,9          | -64,4                         | -64,4         |
| Switzerland          | 365           | 333                         | 2,8           | 2,3          | 2,3          | 2,1          | -8,5                          | -8,5          |
| Japan                | 341           | 295                         | 4,3           | 2,2          | 2,2          | 1,9          | -13,7                         | -13,7         |
| <b>Memo:</b>         |               |                             |               |              |              |              |                               |               |
| OPEC <sup>[2]</sup>  | 4 611         | 5 284                       | 27,2          | 29,5         | 29,5         | 33,4         | 14,6                          | 14,6          |
| EFTA                 | 802           | 501                         | 8,3           | 5,1          | 5,1          | 3,2          | -37,5                         | -37,5         |
| ACPOL <sup>[3]</sup> | 1 230         | 1 807                       | 0,7           | 7,9          | 7,9          | 11,4         | 46,9                          | 46,9          |

Source: GEE, based on data on International Trade statistics from Statistics Portugal (most up-to-date versions available).

Notes:

Countries ranked in descending order of value in 2011.

[1] (Jan 12-Dec 12)/(Jan 11-Dec 11) x 100 - 100

[2] Includes Angola.

[3] African Countries of Portuguese Official Language

## By geographical and economic areas

**Table 14 - Portuguese International trade  
by geographical and economic areas (Intra + Extra-EU)**

Period of assessment: january to december

values in 1000 Euros

| Geographic/Economic Areas<br>Main Countries | IMPORTS (Cif) <sup>[1]</sup> |                   |                        |                      | EXPORTS (Fob) <sup>[2]</sup> |                   |                        |                      | Coverage<br>(fob/cif)<br>2012 | Trade Balance (fob-cif) |                    |
|---|------------------------------|-------------------|------------------------|----------------------|------------------------------|-------------------|------------------------|----------------------|-------------------------------|-------------------------|--------------------|
|   | 2011                         | 2012              | Rate of<br>Change<br>% | Struct.<br>2012<br>% | 2011                         | 2012              | Rate of<br>Change<br>% | Struct.<br>2012<br>% |                               | 2011                    | 2012               |
| <b>WORLD</b>                                | <b>59 242 900</b>            | <b>56 014 611</b> | <b>-5,4</b>            | <b>100,0</b>         | <b>42 870 151</b>            | <b>45 347 437</b> | <b>5,8</b>             | <b>100,0</b>         | <b>81,0</b>                   | <b>-16 372 749</b>      | <b>-10 667 175</b> |
| <b>INTRA EU (27)</b>                        | <b>43 624 091</b>            | <b>40 182 308</b> | <b>-7,9</b>            | <b>71,7</b>          | <b>31 910 218</b>            | <b>32 217 631</b> | <b>1,0</b>             | <b>71,0</b>          | <b>80,2</b>                   | <b>-11 713 873</b>      | <b>-7 964 677</b>  |
| France                                      | 4 008 515                    | 3 651 085         | -8,9                   | 6,5                  | 5 212 785                    | 5 351 905         | 2,7                    | 11,8                 | 146,6                         | 1 204 270               | 1 700 820          |
| Netherlands                                 | 2 829 471                    | 2 735 431         | -3,3                   | 4,9                  | 1 675 363                    | 1 896 137         | 13,2                   | 4,2                  | 69,3                          | -1 154 109              | -839 294           |
| Germany                                     | 7 332 379                    | 6 413 898         | -12,5                  | 11,5                 | 5 811 182                    | 5 573 299         | -4,1                   | 12,3                 | 86,9                          | -1 521 197              | -840 599           |
| Italy                                       | 3 234 950                    | 2 992 278         | -7,5                   | 5,3                  | 1 567 278                    | 1 681 108         | 7,3                    | 3,7                  | 56,2                          | -1 667 673              | -1 311 170         |
| United Kingdom                              | 1 973 407                    | 1 693 901         | -14,2                  | 3,0                  | 2 234 123                    | 2 391 291         | 7,0                    | 5,3                  | 141,2                         | 260 717                 | 697 390            |
| Ireland                                     | 574 078                      | 550 607           | -4,1                   | 1,0                  | 127 840                      | 135 317           | 5,8                    | 0,3                  | 24,6                          | -446 238                | -415 290           |
| Denmark                                     | 292 781                      | 252 697           | -13,7                  | 0,5                  | 270 262                      | 307 233           | 13,7                   | 0,7                  | 121,6                         | -22 519                 | 54 536             |
| Greece                                      | 125 041                      | 114 334           | -8,6                   | 0,2                  | 150 108                      | 273 482           | 82,2                   | 0,6                  | 239,2                         | 25 067                  | 159 147            |
| Spain                                       | 19 116 719                   | 17 790 395        | -6,9                   | 31,8                 | 10 679 694                   | 10 193 780        | -4,5                   | 22,5                 | 57,3                          | -8 437 025              | -7 596 615         |
| Belgium                                     | 1 504 544                    | 1 422 036         | -5,5                   | 2,5                  | 1 350 284                    | 1 403 397         | 3,9                    | 3,1                  | 98,7                          | -154 259                | -18 640            |
| Luxembourg                                  | 62 106                       | 79 616            | 28,2                   | 0,1                  | 61 038                       | 59 043            | -3,3                   | 0,1                  | 74,2                          | -1 068                  | -20 573            |
| Sweden                                      | 623 728                      | 567 076           | -9,1                   | 1,0                  | 443 283                      | 463 931           | 4,7                    | 1,0                  | 81,8                          | -180 445                | -103 145           |
| Finland                                     | 150 959                      | 146 929           | -2,7                   | 0,3                  | 246 918                      | 226 884           | -8,1                   | 0,5                  | 154,4                         | 95 959                  | 79 954             |
| Austria                                     | 314 202                      | 279 323           | -11,1                  | 0,5                  | 236 274                      | 255 119           | 8,0                    | 0,6                  | 91,3                          | -77 927                 | -24 203            |
| Malta                                       | 19 271                       | 20 150            | 4,6                    | 0,0                  | 24 498                       | 12 676            | -48,3                  | 0,0                  | 62,9                          | 5 227                   | -7 474             |
| Estonia                                     | 9 101                        | 13 849            | 52,2                   | 0,0                  | 15 842                       | 26 031            | 64,3                   | 0,1                  | 188,0                         | 6 741                   | 12 182             |
| Latvia                                      | 3 224                        | 7 548             | 134,1                  | 0,0                  | 13 184                       | 17 895            | 35,7                   | 0,0                  | 237,1                         | 9 959                   | 10 347             |
| Lithuania                                   | 59 941                       | 54 045            | -9,8                   | 0,1                  | 23 136                       | 21 998            | -4,9                   | 0,0                  | 40,7                          | -36 805                 | -32 047            |
| Poland                                      | 402 157                      | 408 872           | 1,7                    | 0,7                  | 404 035                      | 402 786           | -0,3                   | 0,9                  | 98,5                          | 1 878                   | -6 086             |
| Czech Republic                              | 362 251                      | 304 475           | -15,9                  | 0,5                  | 284 756                      | 325 288           | 14,2                   | 0,7                  | 106,8                         | -77 495                 | 20 813             |
| Slovakia                                    | 115 158                      | 124 293           | 7,9                    | 0,2                  | 88 378                       | 84 642            | -4,2                   | 0,2                  | 68,1                          | -26 780                 | -39 651            |
| Hungary                                     | 259 329                      | 240 744           | -7,2                   | 0,4                  | 122 573                      | 154 011           | 25,6                   | 0,3                  | 64,0                          | -136 756                | -86 733            |
| Romania                                     | 125 131                      | 126 126           | 0,8                    | 0,2                  | 232 542                      | 264 029           | 13,5                   | 0,6                  | 209,3                         | 107 412                 | 137 903            |
| Bulgaria                                    | 81 930                       | 153 733           | 87,6                   | 0,3                  | 60 764                       | 66 326            | 9,2                    | 0,1                  | 43,1                          | -21 167                 | -87 408            |
| Slovenia                                    | 39 381                       | 36 713            | -6,8                   | 0,1                  | 25 848                       | 37 606            | 45,5                   | 0,1                  | 102,4                         | -13 532                 | 893                |
| Cyprus                                      | 4 282                        | 2 122             | -50,4                  | 0,0                  | 34 545                       | 24 137            | -30,1                  | 0,1                  | 1137,5                        | 30 263                  | 22 015             |
| OTHERS                                      | 55                           | 31                | -44,8                  | 0,0                  | 513 685                      | 568 282           | 10,6                   | 1,3                  | 1 862 915,2                   | 513 630                 | 568 282            |
| <b>EXTRA EU (27)</b>                        | <b>15 618 809</b>            | <b>15 832 304</b> | <b>1,4</b>             | <b>28,3</b>          | <b>10 959 933</b>            | <b>13 129 806</b> | <b>19,8</b>            | <b>29,0</b>          | <b>82,9</b>                   | <b>-4 658 876</b>       | <b>-2 702 498</b>  |
| of which:                                   |                              |                   |                        |                      |                              |                   |                        |                      |                               |                         |                    |
| <b>1-EUROPE</b>                             | <b>1 690 669</b>             | <b>1 458 297</b>  | <b>-13,7</b>           | <b>2,6</b>           | <b>1 226 152</b>             | <b>1 433 816</b>  | <b>16,9</b>            | <b>3,2</b>           | <b>98,3</b>                   | <b>-464 517</b>         | <b>-24 481</b>     |
| <b>EFTA</b>                                 | <b>801 524</b>               | <b>501 174</b>    | <b>-37,5</b>           | <b>0,9</b>           | <b>467 025</b>               | <b>513 719</b>    | <b>10,0</b>            | <b>1,1</b>           | <b>102,5</b>                  | <b>-334 499</b>         | <b>12 545</b>      |
| Iceland                                     | 19 147                       | 19 041            | -0,5                   | 0,0                  | 3 979                        | 7 791             | 95,8                   | 0,0                  | 40,9                          | -15 168                 | -11 250            |
| Norway                                      | 417 264                      | 148 390           | -64,4                  | 0,3                  | 90 098                       | 104 270           | 15,7                   | 0,2                  | 70,3                          | -327 166                | -44 120            |
| Switzerland                                 | 364 520                      | 333 474           | -8,5                   | 0,6                  | 372 256                      | 401 329           | 7,8                    | 0,9                  | 120,3                         | 7 736                   | 67 855             |
| <b>OTHERS</b>                               | <b>889 145</b>               | <b>957 123</b>    | <b>7,6</b>             | <b>1,7</b>           | <b>759 127</b>               | <b>920 097</b>    | <b>21,2</b>            | <b>2,0</b>           | <b>96,1</b>                   | <b>-130 018</b>         | <b>-37 026</b>     |
| Turkey                                      | 103 005                      | 107 195           | 4,1                    | 0,2                  | 300 700                      | 355 901           | 18,4                   | 0,8                  | 332,0                         | 197 695                 | 248 707            |
| Russian Federation                          | 562 810                      | 475 690           | -15,5                  | 0,8                  | 139 594                      | 182 236           | 30,5                   | 0,4                  | 38,3                          | -423 216                | -293 544           |
| Croatia                                     | 10 053                       | 5 713             | -43,2                  | 0,0                  | 15 357                       | 17 751            | 15,6                   | 0,0                  | 310,7                         | 5 305                   | 12 038             |
| <b>2-AFRICA</b>                             | <b>4 361 010</b>             | <b>5 452 639</b>  | <b>25,0</b>            | <b>9,7</b>           | <b>4 356 844</b>             | <b>5 282 621</b>  | <b>21,2</b>            | <b>11,6</b>          | <b>96,9</b>                   | <b>-4 166</b>           | <b>-170 018</b>    |
| <b>MAGHREB</b>                              | <b>941 198</b>               | <b>1 021 363</b>  | <b>8,5</b>             | <b>1,8</b>           | <b>890 782</b>               | <b>1 002 329</b>  | <b>12,5</b>            | <b>2,2</b>           | <b>98,1</b>                   | <b>-50 416</b>          | <b>-19 034</b>     |
| Morocco                                     | 139 002                      | 156 597           | 12,7                   | 0,3                  | 389 167                      | 460 428           | 18,3                   | 1,0                  | 294,0                         | 250 165                 | 303 831            |
| Algeria                                     | 776 204                      | 799 050           | 2,9                    | 1,4                  | 358 329                      | 427 795           | 19,4                   | 0,9                  | 53,5                          | -417 875                | -371 255           |
| Tunisia                                     | 25 992                       | 65 716            | 152,8                  | 0,1                  | 143 286                      | 114 106           | -20,4                  | 0,3                  | 173,6                         | 117 294                 | 48 390             |
| <b>ACPOL <sup>[3]</sup></b>                 | <b>1 229 985</b>             | <b>1 807 296</b>  | <b>46,9</b>            | <b>3,2</b>           | <b>2 913 046</b>             | <b>3 621 341</b>  | <b>24,3</b>            | <b>8,0</b>           | <b>200,4</b>                  | <b>1 683 061</b>        | <b>1 814 045</b>   |
| Cape Verde                                  | 9 971                        | 9 111             | -8,6                   | 0,0                  | 254 089                      | 216 780           | -14,7                  | 0,5                  | 2379,2                        | 244 118                 | 207 669            |
| Guinea-Bissau                               | 261                          | 39                | -84,9                  | 0,0                  | 64 268                       | 71 264            | 10,9                   | 0,2                  | 181057,4                      | 64 007                  | 71 225             |
| Sao Tome and Principe                       | 270                          | 247               | -8,5                   | 0,0                  | 46 546                       | 46 332            | -0,5                   | 0,1                  | 18766,8                       | 46 276                  | 46 085             |
| Angola                                      | 1 177 501                    | 1 781 471         | 51,3                   | 3,2                  | 2 331 161                    | 2 998 757         | 28,6                   | 6,6                  | 168,3                         | 1 153 660               | 1 217 286          |
| Mozambique                                  | 41 983                       | 16 428            | -60,9                  | 0,0                  | 216 982                      | 288 209           | 32,8                   | 0,6                  | 1754,4                        | 175 000                 | 271 780            |
| <b>OTHERS</b>                               | <b>2 189 828</b>             | <b>2 623 980</b>  | <b>19,8</b>            | <b>4,7</b>           | <b>553 017</b>               | <b>658 951</b>    | <b>19,2</b>            | <b>1,5</b>           | <b>25,1</b>                   | <b>-1 636 811</b>       | <b>-1 965 029</b>  |
| Libyan Arab Jamahiriya                      | 13 639                       | 399 003           | 2825,6                 | 0,7                  | 12 011                       | 21 348            | 77,7                   | 0,0                  | 5,4                           | -1 628                  | -377 655           |
| Egypt                                       | 88 088                       | 145 089           | 64,7                   | 0,3                  | 71 131                       | 87 264            | 22,7                   | 0,2                  | 60,1                          | -16 957                 | -57 825            |
| Côte d'Ivoire                               | 16 121                       | 25 295            | 56,9                   | 0,0                  | 15 229                       | 14 212            | -6,7                   | 0,0                  | 56,2                          | -892                    | -11 083            |
| Nigeria                                     | 1 528 659                    | 925 806           | -39,4                  | 1,7                  | 76 110                       | 89 283            | 17,3                   | 0,2                  | 9,6                           | -1 452 549              | -836 523           |
| South Africa                                | 97 657                       | 77 206            | -20,9                  | 0,1                  | 85 880                       | 101 807           | 18,5                   | 0,2                  | 131,9                         | -11 777                 | 24 601             |

(continues)

Period of assessment: January to december

| Geographic/Economic Areas                    | IMPORTS (Cif) <sup>[1]</sup> |                  |                  |                | EXPORTS (Fob) <sup>[2]</sup> |                  |                  |                | Coverage (fob/cif) 2012 | Trade Balance (fob-cif) |                   |
|--|------------------------------|------------------|------------------|----------------|------------------------------|------------------|------------------|----------------|-------------------------|-------------------------|-------------------|
|  | 2011                         | 2012             | Rate of Change % | Struct. 2012 % | 2011                         | 2012             | Rate of Change % | Struct. 2012 % |                         | 2011                    | 2012              |
| <b>3-AMERICA</b>                             | <b>3 862 678</b>             | <b>3 472 994</b> | <b>-10,1</b>     | <b>6,2</b>     | <b>3 168 173</b>             | <b>3 578 669</b> | <b>13,0</b>      | <b>7,9</b>     | <b>103,0</b>            | <b>- 694 505</b>        | <b>105 675</b>    |
| <b>NAFTA</b>                                 | <b>1 584 672</b>             | <b>1 258 949</b> | <b>-20,6</b>     | <b>2,2</b>     | <b>2 162 946</b>             | <b>2 247 241</b> | <b>3,9</b>       | <b>5,0</b>     | <b>178,5</b>            | <b>578 274</b>          | <b>988 292</b>    |
| United States                                | 1 134 278                    | 961 448          | -15,2            | 1,7            | 1 496 386                    | 1 865 523        | 24,7             | 4,1            | 194,0                   | 362 108                 | 904 074           |
| Canada                                       | 219 498                      | 145 896          | -33,5            | 0,3            | 204 948                      | 184 407          | -10,0            | 0,4            | 126,4                   | -14 550                 | 38 511            |
| Mexico                                       | 230 896                      | 151 604          | -34,3            | 0,3            | 461 612                      | 197 311          | -57,3            | 0,4            | 130,1                   | 230 716                 | 45 707            |
| <b>MERCOSUL</b>                              | <b>1 768 955</b>             | <b>1 549 200</b> | <b>-12,4</b>     | <b>2,8</b>     | <b>649 230</b>               | <b>762 319</b>   | <b>17,4</b>      | <b>1,7</b>     | <b>49,2</b>             | <b>-1 119 725</b>       | <b>-786 881</b>   |
| Brazil                                       | 1 461 903                    | 1 368 699        | -6,4             | 2,4            | 583 114                      | 679 485          | 16,5             | 1,5            | 49,6                    | -878 789                | -689 215          |
| Argentina                                    | 153 573                      | 86 523           | -43,7            | 0,2            | 45 220                       | 53 138           | 17,5             | 0,1            | 61,4                    | -108 353                | -33 385           |
| <b>OTHERS</b>                                | <b>509 052</b>               | <b>664 845</b>   | <b>30,6</b>      | <b>1,2</b>     | <b>355 997</b>               | <b>569 109</b>   | <b>59,9</b>      | <b>1,3</b>     | <b>85,6</b>             | <b>-153 054</b>         | <b>-95 736</b>    |
| Honduras                                     | 13 063                       | 7 953            | -39,1            | 0,0            | 2 466                        | 2 037            | -17,4            | 0,0            | 25,6                    | -10 598                 | -5 916            |
| Costa Rica                                   | 54 151                       | 33 475           | -38,2            | 0,1            | 6 909                        | 4 014            | -41,9            | 0,0            | 12,0                    | -47 243                 | -29 461           |
| Cuba   | 6 374                        | 32 265           | 406,2            | 0,1            | 22 318                       | 44 393           | 98,9             | 0,1            | 137,6                   | 15 944                  | 12 128            |
| Colombia                                     | 246 601                      | 281 831          | 14,3             | 0,5            | 18 774                       | 28 176           | 50,1             | 0,1            | 10,0                    | -227 827                | -253 656          |
| Venezuela                                    | 14 085                       | 164 722          | 1069,5           | 0,3            | 154 201                      | 313 414          | 103,3            | 0,7            | 190,3                   | 140 116                 | 148 693           |
| Ecuador                                      | 22 108                       | 12 657           | -42,7            | 0,0            | 10 500                       | 13 801           | 31,4             | 0,0            | 109,0                   | -11 608                 | 1 144             |
| Chile  | 51 257                       | 24 745           | -51,7            | 0,0            | 80 159                       | 86 396           | 7,8              | 0,2            | 349,1                   | 28 902                  | 61 651            |
| <b>4-ASIA</b>                                | <b>5 649 857</b>             | <b>5 414 358</b> | <b>-4,2</b>      | <b>9,7</b>     | <b>1 505 290</b>             | <b>2 025 905</b> | <b>34,6</b>      | <b>4,5</b>     | <b>37,4</b>             | <b>-4 144 567</b>       | <b>-3 388 453</b> |
| <b>MIDDLE EAST</b>                           | <b>1 499 849</b>             | <b>1 826 373</b> | <b>21,8</b>      | <b>3,3</b>     | <b>412 886</b>               | <b>533 554</b>   | <b>29,2</b>      | <b>1,2</b>     | <b>29,2</b>             | <b>-1 086 963</b>       | <b>-1 292 819</b> |
| Iraq   | 0                            | 175 980          | 42100337,8       | 0,3            | 3 956                        | 8 777            | 121,9            | 0,0            | 5,0                     | 3 955                   | -167 203          |
| Iran, Islamic Republic of                    | 4 343                        | 7 344            | 69,1             | 0,0            | 35 104                       | 13 319           | -62,1            | 0,0            | 181,4                   | 30 761                  | 5 975             |
| Israel                                       | 93 796                       | 112 675          | 20,1             | 0,2            | 74 490                       | 106 879          | 43,5             | 0,2            | 94,9                    | -19 306                 | -5 796            |
| Saudi Arabia                                 | 914 365                      | 890 213          | -2,6             | 1,6            | 92 958                       | 132 703          | 42,8             | 0,3            | 14,9                    | -821 407                | -757 510          |
| United Arab Emirates                         | 68 694                       | 22 963           | -66,6            | 0,0            | 90 101                       | 95 538           | 6,0              | 0,2            | 416,0                   | 21 407                  | 72 574            |
| <b>ASEAN</b>                                 | <b>454 773</b>               | <b>410 305</b>   | <b>-9,8</b>      | <b>0,7</b>     | <b>139 001</b>               | <b>139 375</b>   | <b>0,3</b>       | <b>0,3</b>     | <b>34,0</b>             | <b>-315 772</b>         | <b>-270 931</b>   |
| Thailand                                     | 112 487                      | 97 639           | -13,2            | 0,2            | 16 047                       | 21 239           | 32,4             | 0,0            | 21,8                    | -96 440                 | -76 400           |
| Indonesia                                    | 87 026                       | 55 165           | -36,6            | 0,1            | 11 011                       | 15 621           | 41,9             | 0,0            | 28,3                    | -76 015                 | -39 544           |
| Malaysia                                     | 112 007                      | 78 817           | -29,6            | 0,1            | 12 253                       | 28 731           | 134,5            | 0,1            | 36,5                    | -99 754                 | -50 086           |
| Singapore                                    | 23 387                       | 19 560           | -16,4            | 0,0            | 81 283                       | 56 441           | -30,6            | 0,1            | 288,6                   | 57 896                  | 36 882            |
| Philippines                                  | 17 689                       | 14 447           | -18,3            | 0,0            | 5 623                        | 6 514            | 15,9             | 0,0            | 45,1                    | -12 066                 | -7 933            |
| <b>OTHERS</b>                                | <b>3 695 235</b>             | <b>3 177 680</b> | <b>-14,0</b>     | <b>5,7</b>     | <b>953 404</b>               | <b>1 352 976</b> | <b>41,9</b>      | <b>3,0</b>     | <b>42,6</b>             | <b>-2 741 831</b>       | <b>-1 824 703</b> |
| Timor-Leste                                  | 1 026                        | 227              | -77,9            | 0,0            | 4 899                        | 8 059            | 64,5             | 0,0            | 3557,6                  | 3 873                   | 7 832             |
| Pakistan                                     | 81 454                       | 61 289           | -24,8            | 0,1            | 15 607                       | 13 943           | -10,7            | 0,0            | 22,7                    | -65 846                 | -47 347           |
| India  | 467 213                      | 336 346          | -28,0            | 0,6            | 89 377                       | 94 976           | 6,3              | 0,2            | 28,2                    | -377 837                | -241 370          |
| China  | 1 499 818                    | 1 374 684        | -8,3             | 2,5            | 396 869                      | 779 032          | 96,3             | 1,7            | 56,7                    | -1 102 949              | -595 651          |
| Korea, Republic of                           | 278 178                      | 174 214          | -37,4            | 0,3            | 53 835                       | 79 008           | 46,8             | 0,2            | 45,4                    | -224 343                | -95 206           |
| Japan  | 341 340                      | 294 556          | -13,7            | 0,5            | 191 995                      | 190 184          | -0,9             | 0,4            | 64,6                    | -149 345                | -104 372          |
| Taiwan                                       | 96 593                       | 102 031          | 5,6              | 0,2            | 61 858                       | 25 934           | -58,1            | 0,1            | 25,4                    | -34 735                 | -76 097           |
| Hong Kong                                    | 27 524                       | 28 796           | 4,6              | 0,1            | 111 484                      | 123 553          | 10,8             | 0,3            | 429,1                   | 83 959                  | 94 757            |
| Macao  | 231                          | 376              | 62,6             | 0,0            | 15 576                       | 21 489           | 38,0             | 0,0            | 5722,0                  | 15 345                  | 21 114            |
| <b>5-AUSTR,OC,P. REG</b>                     | <b>42 009</b>                | <b>33 583</b>    | <b>-20,1</b>     | <b>0,1</b>     | <b>84 000</b>                | <b>90 849</b>    | <b>8,2</b>       | <b>0,2</b>     | <b>270,5</b>            | <b>41 992</b>           | <b>57 267</b>     |
| Australia                                    | 14 595                       | 11 214           | -23,2            | 0,0            | 72 117                       | 79 071           | 9,6              | 0,2            | 705,1                   | 57 522                  | 67 856            |
| New Zealand                                  | 26 714                       | 20 149           | -24,6            | 0,0            | 9 016                        | 9 439            | 4,7              | 0,0            | 46,8                    | -17 698                 | -10 710           |
| <b>6-OTHERS</b>                              | <b>12 586</b>                | <b>433</b>       | <b>-96,6</b>     | <b>0,0</b>     | <b>619 474</b>               | <b>717 946</b>   | <b>15,9</b>      | <b>1,6</b>     | <b>165682,7</b>         | <b>606 887</b>          | <b>717 513</b>    |
| Stores and provisions (Extra EU)             | 0                            | 0                | 0,0              | 0,0            | 516 631                      | 609 889          | 18,1             | 1,3            | 0,0                     | 516 631                 | 609 889           |
| Countries/territories not specif. (Extra EU) | 12 586                       | 433              | -96,6            | 0,0            | 102 843                      | 108 057          | 5,1              | 0,2            | 24936,7                 | 90 256                  | 107 624           |

**Memo:**

|                           |            |            |       |      |            |            |      |      |       |             |            |
|---------------------------|------------|------------|-------|------|------------|------------|------|------|-------|-------------|------------|
| Intra EU-15               | 42 142 936 | 38 689 637 | -8,2  | 69,1 | 30 580 117 | 30 780 206 | 0,7  | 67,9 | 79,6  | -11 562 818 | -7 909 431 |
| Intra-enlargement         | 1 481 155  | 1 492 670  | 0,8   | 2,7  | 1 330 100  | 1 437 425  | 8,1  | 3,2  | 96,3  | -151 055    | -55 246    |
| OECD (excl. EU)           | 3 294 487  | 2 504 603  | -24,0 | 4,5  | 3 411 589  | 3 667 509  | 7,5  | 8,1  | 146,4 | 117 102     | 1 162 906  |
| OPEC                      | 4 611 109  | 5 283 562  | 14,6  | 9,4  | 3 192 832  | 4 162 373  | 30,4 | 9,2  | 78,8  | -1 418 278  | -1 121 188 |
| ACP <sup>[4]</sup>        | 3 384 453  | 3 984 226  | 17,7  | 7,1  | 3 415 531  | 4 237 717  | 24,1 | 9,3  | 106,4 | 31 077      | 253 491    |
| CPLP <sup>[5]</sup>       | 2 692 914  | 3 176 222  | 17,9  | 5,7  | 3 501 059  | 4 308 885  | 23,1 | 9,5  | 135,7 | 808 145     | 1 132 663  |
| CIS <sup>[6]</sup>        | 1 898 015  | 2 070 954  | 9,1   | 3,7  | 180 030    | 232 668    | 29,2 | 0,5  | 11,2  | -1 717 985  | -1 838 286 |
| Mashrak                   | 98 267     | 154 339    | 57,1  | 0,3  | 140 808    | 151 799    | 7,8  | 0,3  | 98,4  | 47 941      | -2 540     |
| EUROMED                   | 1 236 266  | 1 395 572  | 12,9  | 2,5  | 1 406 780  | 1 616 908  | 14,9 | 3,6  | 115,9 | 170 514     | 221 337    |
| Latin American Count.     | 2 450 100  | 2 302 064  | -6,0  | 4,1  | 1 452 307  | 1 515 849  | 4,4  | 3,3  | 65,8  | -997 793    | -786 215   |
| Cent. Amer. Common Market | 78 206     | 57 486     | -26,5 | 0,1  | 28 924     | 28 367     | -1,9 | 0,1  | 49,3  | -49 282     | -29 120    |
| Andean Community          | 313 111    | 484 728    | 54,8  | 0,9  | 201 181    | 381 548    | 89,7 | 0,8  | 78,7  | -111 929    | -103 179   |
| ASEM (relac. Euro-Asia)   | 3 122 775  | 2 651 394  | -15,1 | 4,7  | 886 709    | 1 296 585  | 46,2 | 2,9  | 48,9  | -2 236 066  | -1 354 809 |
| EDA (Econ Dinam Asian)    | 650 177    | 501 056    | -22,9 | 0,9  | 336 760    | 334 906    | -0,6 | 0,7  | 66,8  | -313 417    | -166 150   |
| China+H. Kong+Macao       | 1 527 573  | 1 403 855  | -8,1  | 2,5  | 523 928    | 924 075    | 76,4 | 2,0  | 65,8  | -1 003 645  | -479 780   |

Source: GEE, based on data on International Trade statistics from Statistics Portugal (most up-to-date versions available). Estimates for operators under the assimilation threshold and non-responses are included in Intra-EU trade.

**Notes:**

[1]Sum of Imports from EU and Imports from third countries.

[2]Sum of Exports to EU and Exports to third countries.

[3]African Countries of Portuguese Official Language

[4]African, Caribbean and Pacific Group of States

[5]Community of Portuguese Language Countries

[6]Commonwealth of Independent States

**Table 15 - International Trade of Portuguese goods  
by geographical and economic areas (Intra + Extra-EU)  
Imports [1] - Contributions of the main partners to the global growth rate**

Period of assessment: january to december

| Countries and regions                 | 1000 Euros        |                   |                   |               | Structure (%) |                               | Growth rates and contributions to growth |                              |              |                              |
|---------------------------------------|-------------------|-------------------|-------------------|---------------|---------------|-------------------------------|--|------------------------------|--------------|------------------------------|
|                                       | 2011              | jan-dec           |                   | jan-dec       |               | Last 12 months <sup>[2]</sup> |  | jan-dec                      |              |                              |
|                                       |                   | Rank.             | 2011              | 2012          | 2011          | 2012                          | y.o.y., % <sup>[3]</sup>                 | Contrib. p.p. <sup>[4]</sup> | y.o.y., %    | Contrib. p.p. <sup>[4]</sup> |
| <b>WORLD</b>                          | <b>59 242 900</b> | <b>59 242 900</b> | <b>56 014 611</b> | <b>100,00</b> | <b>100,00</b> | <b>-5,4</b>                   | <b>-5,45</b>                             | <b>-5,4</b>                  | <b>-5,45</b> |                              |
| <b>INTRA EU(27)</b>                   | <b>43 624 091</b> | <b>43 624 091</b> | <b>40 182 308</b> | <b>73,64</b>  | <b>71,74</b>  | <b>-7,9</b>                   | <b>-5,81</b>                             | <b>-7,9</b>                  | <b>-5,81</b> |                              |
| Spain                                 | 19 116 719        | 19 116 719        | 17 790 395        | 32,27         | 31,76         | -6,9                          | -2,24                                    | -6,9                         | -2,24        |                              |
| Germany                               | 7 332 379         | 7 332 379         | 6 413 898         | 12,38         | 11,45         | -12,5                         | -1,55                                    | -12,5                        | -1,55        |                              |
| France                                | 4 008 515         | 4 008 515         | 3 651 085         | 6,77          | 6,52          | -8,9                          | -0,60                                    | -8,9                         | -0,60        |                              |
| Italy                                 | 3 234 950         | 3 234 950         | 2 992 278         | 5,46          | 5,34          | -7,5                          | -0,41                                    | -7,5                         | -0,41        |                              |
| Netherlands                           | 2 829 471         | 2 829 471         | 2 735 431         | 4,78          | 4,88          | -3,3                          | -0,16                                    | -3,3                         | -0,16        |                              |
| United Kingdom                        | 1 973 407         | 1 973 407         | 1 693 901         | 3,33          | 3,02          | -14,2                         | -0,47                                    | -14,2                        | -0,47        |                              |
| Belgium                               | 1 504 544         | 1 504 544         | 1 422 036         | 2,54          | 2,54          | -5,5                          | -0,14                                    | -5,5                         | -0,14        |                              |
| Sweden                                | 623 728           | 623 728           | 567 076           | 1,05          | 1,01          | -9,1                          | -0,10                                    | -9,1                         | -0,10        |                              |
| Ireland                               | 574 078           | 574 078           | 550 607           | 0,97          | 0,98          | -4,1                          | -0,04                                    | -4,1                         | -0,04        |                              |
| Poland                                | 402 157           | 402 157           | 408 872           | 0,68          | 0,73          | 1,7                           | 0,01                                     | 1,7                          | 0,01         |                              |
| Czech Republic                        | 362 251           | 362 251           | 304 475           | 0,61          | 0,54          | -15,9                         | -0,10                                    | -15,9                        | -0,10        |                              |
| Austria                               | 314 202           | 314 202           | 279 323           | 0,53          | 0,50          | -11,1                         | -0,06                                    | -11,1                        | -0,06        |                              |
| Denmark                               | 292 781           | 292 781           | 252 697           | 0,49          | 0,45          | -13,7                         | -0,07                                    | -13,7                        | -0,07        |                              |
| Hungary                               | 259 329           | 259 329           | 240 744           | 0,44          | 0,43          | -7,2                          | -0,03                                    | -7,2                         | -0,03        |                              |
| Finland                               | 150 959           | 150 959           | 146 929           | 0,25          | 0,26          | -2,7                          | -0,01                                    | -2,7                         | -0,01        |                              |
| Romania                               | 125 131           | 125 131           | 126 126           | 0,21          | 0,23          | 0,8                           | 0,00                                     | 0,8                          | 0,00         |                              |
| Greece                                | 125 041           | 125 041           | 114 334           | 0,21          | 0,20          | -8,6                          | -0,02                                    | -8,6                         | -0,02        |                              |
| Slovakia                              | 115 158           | 115 158           | 124 293           | 0,19          | 0,22          | 7,9                           | 0,02                                     | 7,9                          | 0,02         |                              |
| Bulgaria                              | 81 930            | 81 930            | 153 733           | 0,14          | 0,27          | 87,6                          | 0,12                                     | 87,6                         | 0,12         |                              |
| Luxembourg                            | 62 106            | 62 106            | 79 616            | 0,10          | 0,14          | 28,2                          | 0,03                                     | 28,2                         | 0,03         |                              |
| Lithuania                             | 59 941            | 59 941            | 54 045            | 0,10          | 0,10          | -9,8                          | -0,01                                    | -9,8                         | -0,01        |                              |
| Slovenia                              | 39 381            | 39 381            | 36 713            | 0,07          | 0,07          | -6,8                          | 0,00                                     | -6,8                         | 0,00         |                              |
| Malta                                 | 19 271            | 19 271            | 20 150            | 0,03          | 0,04          | 4,6                           | 0,00                                     | 4,6                          | 0,00         |                              |
| Estonia                               | 9 101             | 9 101             | 13 849            | 0,02          | 0,02          | 52,2                          | 0,01                                     | 52,2                         | 0,01         |                              |
| Cyprus                                | 4 282             | 4 282             | 2 122             | 0,01          | 0,00          | -50,4                         | 0,00                                     | -50,4                        | 0,00         |                              |
| Latvia                                | 3 224             | 3 224             | 7 548             | 0,01          | 0,01          | 134,1                         | 0,01                                     | 134,1                        | 0,01         |                              |
| OTHERS                                | 55                | 55                | 31                | 0,00          | 0,00          | -44,8                         | 0,00                                     | -44,8                        | 0,00         |                              |
| <b>EXTRA EU(27)</b>                   | <b>15 618 809</b> | <b>15 618 809</b> | <b>15 832 304</b> | <b>26,36</b>  | <b>28,26</b>  | <b>1,4</b>                    | <b>0,36</b>                              | <b>1,4</b>                   | <b>0,36</b>  |                              |
| of which:                             |                   |                   |                   |               |               |                               |  |                              |              |                              |
| <b>1-EUROPE</b>                       | <b>1 690 669</b>  | <b>1 690 669</b>  | <b>1 458 297</b>  | <b>2,85</b>   | <b>2,60</b>   | <b>-13,7</b>                  | <b>-0,39</b>                             | <b>-13,7</b>                 | <b>-0,39</b> |                              |
| <b>EFTA</b>                           | <b>801 524</b>    | <b>801 524</b>    | <b>501 174</b>    | <b>1,35</b>   | <b>0,89</b>   | <b>-37,5</b>                  | <b>-0,51</b>                             | <b>-37,5</b>                 | <b>-0,51</b> |                              |
| Norway                                | 417 264           | 417 264           | 148 390           | 0,70          | 0,26          | -64,4                         | -0,45                                    | -64,4                        | -0,45        |                              |
| Switzerland                           | 364 520           | 364 520           | 333 474           | 0,62          | 0,60          | -8,5                          | -0,05                                    | -8,5                         | -0,05        |                              |
| Iceland                               | 19 147            | 19 147            | 19 041            | 0,03          | 0,03          | -0,5                          | 0,00                                     | -0,5                         | 0,00         |                              |
| <b>OTHERS</b>                         | <b>889 145</b>    | <b>889 145</b>    | <b>957 123</b>    | <b>1,50</b>   | <b>1,71</b>   | <b>7,6</b>                    | <b>0,11</b>                              | <b>7,6</b>                   | <b>0,11</b>  |                              |
| Russian Federation                    | 562 810           | 562 810           | 475 690           | 0,95          | 0,85          | -15,5                         | -0,15                                    | -15,5                        | -0,15        |                              |
| Ukraine                               | 164 273           | 164 273           | 309 994           | 0,28          | 0,55          | 88,7                          | 0,25                                     | 88,7                         | 0,25         |                              |
| Turkey                                | 103 005           | 103 005           | 107 195           | 0,17          | 0,19          | 4,1                           | 0,01                                     | 4,1                          | 0,01         |                              |
| Former Yugoslav Republic of Macedonia | 22 135            | 22 135            | 12 601            | 0,04          | 0,02          | -43,1                         | -0,02                                    | -43,1                        | -0,02        |                              |
| <b>2-AFRICA</b>                       | <b>4 361 010</b>  | <b>4 361 010</b>  | <b>5 452 639</b>  | <b>7,36</b>   | <b>9,73</b>   | <b>25,0</b>                   | <b>1,84</b>                              | <b>25,0</b>                  | <b>1,84</b>  |                              |
| <b>MAGHREB</b>                        | <b>941 198</b>    | <b>941 198</b>    | <b>1 021 363</b>  | <b>1,59</b>   | <b>1,82</b>   | <b>8,5</b>                    | <b>0,14</b>                              | <b>8,5</b>                   | <b>0,14</b>  |                              |
| Algeria                               | 776 204           | 776 204           | 799 050           | 1,31          | 1,43          | 2,9                           | 0,04                                     | 2,9                          | 0,04         |                              |
| Morocco                               | 139 002           | 139 002           | 156 597           | 0,23          | 0,28          | 12,7                          | 0,03                                     | 12,7                         | 0,03         |                              |
| Tunisia                               | 25 992            | 25 992            | 65 716            | 0,04          | 0,12          | 152,8                         | 0,07                                     | 152,8                        | 0,07         |                              |
| <b>ACPOL<sup>[5]</sup></b>            | <b>1 229 985</b>  | <b>1 229 985</b>  | <b>1 807 296</b>  | <b>2,08</b>   | <b>3,23</b>   | <b>46,9</b>                   | <b>0,97</b>                              | <b>46,9</b>                  | <b>0,97</b>  |                              |
| Angola                                | 1 177 501         | 1 177 501         | 1 781 471         | 1,99          | 3,18          | 51,3                          | 1,02                                     | 51,3                         | 1,02         |                              |
| Mozambique                            | 41 983            | 41 983            | 16 428            | 0,07          | 0,03          | -60,9                         | -0,04                                    | -60,9                        | -0,04        |                              |
| Cape Verde                            | 9 971             | 9 971             | 9 111             | 0,02          | 0,02          | -8,6                          | 0,00                                     | -8,6                         | 0,00         |                              |
| Sao Tome and Principe                 | 270               | 270               | 247               | 0,00          | 0,00          | -8,5                          | 0,00                                     | -8,5                         | 0,00         |                              |
| Guinea-Bissau                         | 261               | 261               | 39                | 0,00          | 0,00          | -84,9                         | 0,00                                     | -84,9                        | 0,00         |                              |
| <b>OTHERS</b>                         | <b>2 189 828</b>  | <b>2 189 828</b>  | <b>2 623 980</b>  | <b>3,70</b>   | <b>4,68</b>   | <b>19,8</b>                   | <b>0,73</b>                              | <b>19,8</b>                  | <b>0,73</b>  |                              |
| Nigeria                               | 1 528 659         | 1 528 659         | 925 806           | 2,58          | 1,65          | -39,4                         | -1,02                                    | -39,4                        | -1,02        |                              |
| Equatorial Guinea                     | 138 977           | 138 977           | 477 509           | 0,23          | 0,85          | 243,6                         | 0,57                                     | 243,6                        | 0,57         |                              |
| South Africa                          | 97 657            | 97 657            | 77 206            | 0,16          | 0,14          | -20,9                         | -0,03                                    | -20,9                        | -0,03        |                              |
| Egypt                                 | 88 088            | 88 088            | 145 089           | 0,15          | 0,26          | 64,7                          | 0,10                                     | 64,7                         | 0,10         |                              |
| Cameroon                              | 86 264            | 86 264            | 372 546           | 0,15          | 0,67          | 331,9                         | 0,48                                     | 331,9                        | 0,48         |                              |
| <b>3-AMERICA</b>                      | <b>3 862 678</b>  | <b>3 862 678</b>  | <b>3 472 994</b>  | <b>6,52</b>   | <b>6,20</b>   | <b>-10,1</b>                  | <b>-0,66</b>                             | <b>-10,1</b>                 | <b>-0,66</b> |                              |
| <b>NAFTA</b>                          | <b>1 584 672</b>  | <b>1 584 672</b>  | <b>1 258 949</b>  | <b>2,67</b>   | <b>2,25</b>   | <b>-20,6</b>                  | <b>-0,55</b>                             | <b>-20,6</b>                 | <b>-0,55</b> |                              |
| United States                         | 1 134 278         | 1 134 278         | 961 448           | 1,91          | 1,72          | -15,2                         | -0,29                                    | -15,2                        | -0,29        |                              |
| Mexico                                | 230 896           | 230 896           | 151 604           | 0,39          | 0,27          | -34,3                         | -0,13                                    | -34,3                        | -0,13        |                              |
| Canada                                | 219 498           | 219 498           | 145 896           | 0,37          | 0,26          | -33,5                         | -0,12                                    | -33,5                        | -0,12        |                              |

(continues)

Period of assessment: January to December

| Countries and regions                        | 1000 Euros       |                  |                  |                  | Structure (%) |                               | Growth rates and contributions to growth |                              |              |                              |
|--|------------------|------------------|------------------|------------------|---------------|-------------------------------|--|------------------------------|--------------|------------------------------|
|  | 2011             | jan-dec          |                  | jan-dec          |               | Last 12 months <sup>[2]</sup> |  | jan-dec                      |              |                              |
|  |                  | Rank             | 2011             | 2012             | 2011          | 2012                          | y.o.y., % <sup>[3]</sup>                 | Contrib. p.p. <sup>[4]</sup> | y.o.y., %    | Contrib. p.p. <sup>[4]</sup> |
|  | <b>MERCOSUL</b>  | <b>1 768 955</b> | <b>1 768 955</b> | <b>1 549 200</b> | <b>2,99</b>   | <b>2,77</b>                   | <b>-12,4</b>                             | <b>-0,37</b>                 | <b>-12,4</b> | <b>-0,37</b>                 |
| Brazil                                       | 1 461 903        | 1 461 903        | 1 368 699        | 2,47             | 2,44          | -6,4                          | -0,16                                    | -6,4                         | -0,16        |                              |
| Argentina                                    | 153 573          | 153 573          | 86 523           | 0,26             | 0,15          | -43,7                         | -0,11                                    | -43,7                        | -0,11        |                              |
| <b>OTHERS</b>                                | <b>509 052</b>   | <b>509 052</b>   | <b>664 845</b>   | <b>0,86</b>      | <b>1,19</b>   | <b>30,6</b>                   | <b>0,26</b>                              | <b>30,6</b>                  | <b>0,26</b>  |                              |
| Colombia                                     | 246 601          | 246 601          | 281 831          | 0,42             | 0,50          | 14,3                          | 0,06                                     | 14,3                         | 0,06         |                              |
| Costa Rica                                   | 54 151           | 54 151           | 33 475           | 0,09             | 0,06          | -38,2                         | -0,03                                    | -38,2                        | -0,03        |                              |
| Chile  | 51 257           | 51 257           | 24 745           | 0,09             | 0,04          | -51,7                         | -0,04                                    | -51,7                        | -0,04        |                              |
| Guyana                                       | 33 379           | 33 379           | 17 199           | 0,06             | 0,03          | -48,5                         | -0,03                                    | -48,5                        | -0,03        |                              |
| Peru   | 28 926           | 28 926           | 24 533           | 0,05             | 0,04          | -15,2                         | -0,01                                    | -15,2                        | -0,01        |                              |
| Ecuador                                      | 22 108           | 22 108           | 12 657           | 0,04             | 0,02          | -42,7                         | -0,02                                    | -42,7                        | -0,02        |                              |
| <b>4-ASIA</b>                                | <b>5 649 857</b> | <b>5 649 857</b> | <b>5 414 358</b> | <b>9,54</b>      | <b>9,67</b>   | <b>-4,2</b>                   | <b>-0,40</b>                             | <b>-4,2</b>                  | <b>-0,40</b> |                              |
| <b>MIDDLE EAST</b>                           | <b>1 499 849</b> | <b>1 499 849</b> | <b>1 826 373</b> | <b>2,53</b>      | <b>3,26</b>   | <b>21,8</b>                   | <b>0,55</b>                              | <b>21,8</b>                  | <b>0,55</b>  |                              |
| Saudi Arabia                                 | 914 365          | 914 365          | 890 213          | 1,54             | 1,59          | -2,6                          | -0,04                                    | -2,6                         | -0,04        |                              |
| Azerbaijan                                   | 290 057          | 290 057          | 497 770          | 0,49             | 0,89          | 71,6                          | 0,35                                     | 71,6                         | 0,35         |                              |
| Israel                                       | 93 796           | 93 796           | 112 675          | 0,16             | 0,20          | 20,1                          | 0,03                                     | 20,1                         | 0,03         |                              |
| Qatar  | 88 126           | 88 126           | 64 371           | 0,15             | 0,11          | -27,0                         | -0,04                                    | -27,0                        | -0,04        |                              |
| United Arab Emirates                         | 68 694           | 68 694           | 22 963           | 0,12             | 0,04          | -66,6                         | -0,08                                    | -66,6                        | -0,08        |                              |
| Bahrain                                      | 15 394           | 15 394           | 17               | 0,03             | 0,00          | -99,9                         | -0,03                                    | -99,9                        | -0,03        |                              |
| Oman   | 9 159            | 9 159            | 1 036            | 0,02             | 0,00          | -88,7                         | -0,01                                    | -88,7                        | -0,01        |                              |
| <b>ASEAN</b>                                 | <b>454 773</b>   | <b>454 773</b>   | <b>410 305</b>   | <b>0,77</b>      | <b>0,73</b>   | <b>-9,8</b>                   | <b>-0,08</b>                             | <b>-9,8</b>                  | <b>-0,08</b> |                              |
| Thailand                                     | 112 487          | 112 487          | 97 639           | 0,19             | 0,17          | -13,2                         | -0,03                                    | -13,2                        | -0,03        |                              |
| Malaysia                                     | 112 007          | 112 007          | 78 817           | 0,19             | 0,14          | -29,6                         | -0,06                                    | -29,6                        | -0,06        |                              |
| Viet-Nam                                     | 97 020           | 97 020           | 139 581          | 0,16             | 0,25          | 43,9                          | 0,07                                     | 43,9                         | 0,07         |                              |
| Indonesia                                    | 87 026           | 87 026           | 55 165           | 0,15             | 0,10          | -36,6                         | -0,05                                    | -36,6                        | -0,05        |                              |
| Singapore                                    | 23 387           | 23 387           | 19 560           | 0,04             | 0,03          | -16,4                         | -0,01                                    | -16,4                        | -0,01        |                              |
| <b>OTHERS</b>                                | <b>3 695 235</b> | <b>3 695 235</b> | <b>3 177 680</b> | <b>6,24</b>      | <b>5,67</b>   | <b>-14,0</b>                  | <b>-0,87</b>                             | <b>-14,0</b>                 | <b>-0,87</b> |                              |
| China  | 1 499 818        | 1 499 818        | 1 374 684        | 2,53             | 2,45          | -8,3                          | -0,21                                    | -8,3                         | -0,21        |                              |
| Kazakhstan                                   | 853 958          | 853 958          | 759 279          | 1,44             | 1,36          | -11,1                         | -0,16                                    | -11,1                        | -0,16        |                              |
| India  | 467 213          | 467 213          | 336 346          | 0,79             | 0,60          | -28,0                         | -0,22                                    | -28,0                        | -0,22        |                              |
| Japan  | 341 340          | 341 340          | 294 556          | 0,58             | 0,53          | -13,7                         | -0,08                                    | -13,7                        | -0,08        |                              |
| Korea, Republic of                           | 278 178          | 278 178          | 174 214          | 0,47             | 0,31          | -37,4                         | -0,18                                    | -37,4                        | -0,18        |                              |
| Taiwan                                       | 96 593           | 96 593           | 102 031          | 0,16             | 0,18          | 5,6                           | 0,01                                     | 5,6                          | 0,01         |                              |
| Pakistan                                     | 81 454           | 81 454           | 61 289           | 0,14             | 0,11          | -24,8                         | -0,03                                    | -24,8                        | -0,03        |                              |
| Bangladesh                                   | 27 636           | 27 636           | 25 679           | 0,05             | 0,05          | -7,1                          | 0,00                                     | -7,1                         | 0,00         |                              |
| Hong Kong                                    | 27 524           | 27 524           | 28 796           | 0,05             | 0,05          | 4,6                           | 0,00                                     | 4,6                          | 0,00         |                              |
| Uzbekistan                                   | 9 867            | 9 867            | 8 286            | 0,02             | 0,01          | -16,0                         | 0,00                                     | -16,0                        | 0,00         |                              |
| <b>5-AUSTR,OC,P. REG</b>                     | <b>42 009</b>    | <b>42 009</b>    | <b>33 583</b>    | <b>0,07</b>      | <b>0,06</b>   | <b>-20,1</b>                  | <b>-0,01</b>                             | <b>-20,1</b>                 | <b>-0,01</b> |                              |
| New Zealand                                  | 26 714           | 26 714           | 20 149           | 0,05             | 0,04          | -24,6                         | -0,01                                    | -24,6                        | -0,01        |                              |
| Australia                                    | 14 595           | 14 595           | 11 214           | 0,02             | 0,02          | -23,2                         | -0,01                                    | -23,2                        | -0,01        |                              |
| Papua New Guinea                             | 509              | 509              | 2 182            | 0,00             | 0,00          | 328,3                         | 0,00                                     | 328,3                        | 0,00         |                              |
| <b>6-OTHERS</b>                              | <b>12 586</b>    | <b>12 586</b>    | <b>433</b>       | <b>0,02</b>      | <b>0,00</b>   | <b>-96,6</b>                  | <b>-0,02</b>                             | <b>-96,6</b>                 | <b>-0,02</b> |                              |
| Countries/territories not specif. (Extra EU) | 12 586           | 12 586           | 433              | 0,02             | 0,00          | -96,6                         | -0,02                                    | -96,6                        | -0,02        |                              |
| Stores and provisions (Extra EU)             | 0                | 0                | 0                | 0,00             | 0,00          | 0,0                           | 0,00                                     | 0,0                          | 0,00         |                              |

Memo:

|                           |            |            |            |       |       |       |       |       |       |
|---------------------------|------------|------------|------------|-------|-------|-------|-------|-------|-------|
| Intra EU-15               | 42 142 936 | 42 142 936 | 38 689 637 | 71,14 | 69,07 | -8,2  | -5,83 | -8,2  | -5,83 |
| Intra-enlargement         | 1 481 155  | 1 481 155  | 1 492 670  | 2,50  | 2,66  | 0,8   | 0,02  | 0,8   | 0,02  |
| OECD (excl. EU)           | 3 294 487  | 3 294 487  | 2 504 603  | 5,56  | 4,47  | -24,0 | -1,33 | -24,0 | -1,33 |
| OPEC                      | 4 611 109  | 4 611 109  | 5 283 562  | 7,78  | 9,43  | 14,6  | 1,14  | 14,6  | 1,14  |
| ACP <sup>[6]</sup>        | 3 384 453  | 3 384 453  | 3 984 226  | 5,71  | 7,11  | 17,7  | 1,01  | 17,7  | 1,01  |
| CPLP <sup>[7]</sup>       | 2 692 914  | 2 692 914  | 3 176 222  | 4,55  | 5,67  | 17,9  | 0,82  | 17,9  | 0,82  |
| CIS <sup>[8]</sup>        | 1 898 015  | 1 898 015  | 2 070 954  | 3,20  | 3,70  | 9,1   | 0,29  | 9,1   | 0,29  |
| Mashrak                   | 98 267     | 98 267     | 154 339    | 0,17  | 0,28  | 57,1  | 0,09  | 57,1  | 0,09  |
| EUROMED                   | 1 236 266  | 1 236 266  | 1 395 572  | 2,09  | 2,49  | 12,9  | 0,27  | 12,9  | 0,27  |
| Latin American Count.     | 2 450 100  | 2 450 100  | 2 302 064  | 4,14  | 4,11  | -6,0  | -0,25 | -6,0  | -0,25 |
| Cent. Amer. Common Market | 78 206     | 78 206     | 57 486     | 0,13  | 0,10  | -26,5 | -0,03 | -26,5 | -0,03 |
| Andean Community          | 313 111    | 313 111    | 484 728    | 0,53  | 0,87  | 54,8  | 0,29  | 54,8  | 0,29  |
| ASEM (relac. Euro-Asia)   | 3 122 775  | 3 122 775  | 2 651 394  | 5,27  | 4,73  | -15,1 | -0,80 | -15,1 | -0,80 |
| EDA (Econ Dinam Asian)    | 650 177    | 650 177    | 501 056    | 1,10  | 0,89  | -22,9 | -0,25 | -22,9 | -0,25 |
| China+H. Kong+Macau       | 1 527 573  | 1 527 573  | 1 403 855  | 2,58  | 2,51  | -8,1  | -0,21 | -8,1  | -0,21 |

Source: GEE, based on data on International Trade statistics from Statistics Portugal (most up-to-date versions available). Estimates for operators under the assimilation threshold and non-responses are included in Intra-EU trade.

Notes:

[1] Sum of Imports from EU and Imports from third countries.

[2] 12 months ending in December 2012

[3] (Jan 12-dec 12)/(Jan 11-dec 11) x 100 - 100

[4] Contributions to growth, shift share analysis: (rate of change) x (weight in the previous period) ÷ 100.

[5] African Countries of Portuguese Official Language

[6] African, Caribbean and Pacific Group of States

[7] Community of Portuguese Language Countries

[8] Commonwealth of Independent States

**Table 16 - International Trade of Portuguese goods  
by geographical and economic areas (Intra + Extra-EU)  
Exports <sup>[1]</sup> - Contributions of the main partners to the global growth rate**

Period of assessment: january to december

| Countries and regions       | 1000 Euros        |                   |                   | Structure (%) |               | Growth rates and contributions to growth |                         |                              |             |
|-----------------------------|-------------------|-------------------|-------------------|---------------|---------------|--|-------------------------|------------------------------|-------------|
|                             | 2011              | jan-dec           |                   | jan-dec       |               | Last 12 months <sup>[2]</sup>            |                         | jan-dec                      |             |
|                             |                   | Rank.             | 2011              | 2012          | 2011          | 2012                                     | y.o.y. % <sup>[3]</sup> | Contrib. p.p. <sup>[4]</sup> | y.o.y. %    |
| <b>WORLD</b>                | <b>42 870 151</b> | <b>42 870 151</b> | <b>45 347 437</b> | <b>100,00</b> | <b>100,00</b> | <b>5,8</b>                               | <b>5,78</b>             | <b>5,8</b>                   | <b>5,78</b> |
| <b>INTRA EU(27)</b>         | <b>31 910 218</b> | <b>31 910 218</b> | <b>32 217 631</b> | <b>74,43</b>  | <b>71,05</b>  | <b>1,0</b>                               | <b>0,72</b>             | <b>1,0</b>                   | <b>0,72</b> |
| Spain                       | 10 679 694        | 10 679 694        | 10 193 780        | 24,91         | 22,48         | -4,5                                     | -1,13                   | -4,5                         | -1,13       |
| Germany                     | 5 811 182         | 5 811 182         | 5 573 299         | 13,56         | 12,29         | -4,1                                     | -0,55                   | -4,1                         | -0,55       |
| France                      | 5 212 785         | 5 212 785         | 5 351 905         | 12,16         | 11,80         | 2,7                                      | 0,32                    | 2,7                          | 0,32        |
| United Kingdom              | 2 234 123         | 2 234 123         | 2 391 291         | 5,21          | 5,27          | 7,0                                      | 0,37                    | 7,0                          | 0,37        |
| Netherlands                 | 1 675 363         | 1 675 363         | 1 896 137         | 3,91          | 4,18          | 13,2                                     | 0,51                    | 13,2                         | 0,51        |
| Italy                       | 1 567 278         | 1 567 278         | 1 681 108         | 3,66          | 3,71          | 7,3                                      | 0,27                    | 7,3                          | 0,27        |
| Belgium                     | 1 350 284         | 1 350 284         | 1 403 397         | 3,15          | 3,09          | 3,9                                      | 0,12                    | 3,9                          | 0,12        |
| Sweden                      | 443 283           | 443 283           | 463 931           | 1,03          | 1,02          | 4,7                                      | 0,05                    | 4,7                          | 0,05        |
| Poland                      | 404 035           | 404 035           | 402 786           | 0,94          | 0,89          | -0,3                                     | 0,00                    | -0,3                         | 0,00        |
| Czech Republic              | 284 756           | 284 756           | 325 288           | 0,66          | 0,72          | 14,2                                     | 0,09                    | 14,2                         | 0,09        |
| Denmark                     | 270 262           | 270 262           | 307 233           | 0,63          | 0,68          | 13,7                                     | 0,09                    | 13,7                         | 0,09        |
| Finland                     | 246 918           | 246 918           | 226 884           | 0,58          | 0,50          | -8,1                                     | -0,05                   | -8,1                         | -0,05       |
| Austria                     | 236 274           | 236 274           | 255 119           | 0,55          | 0,56          | 8,0                                      | 0,04                    | 8,0                          | 0,04        |
| Romania                     | 232 542           | 232 542           | 264 029           | 0,54          | 0,58          | 13,5                                     | 0,07                    | 13,5                         | 0,07        |
| Greece                      | 150 108           | 150 108           | 273 482           | 0,35          | 0,60          | 82,2                                     | 0,29                    | 82,2                         | 0,29        |
| Ireland                     | 127 840           | 127 840           | 135 317           | 0,30          | 0,30          | 5,8                                      | 0,02                    | 5,8                          | 0,02        |
| Hungary                     | 122 573           | 122 573           | 154 011           | 0,29          | 0,34          | 25,6                                     | 0,07                    | 25,6                         | 0,07        |
| Slovakia                    | 88 378            | 88 378            | 84 642            | 0,21          | 0,19          | -4,2                                     | -0,01                   | -4,2                         | -0,01       |
| Luxembourg                  | 61 038            | 61 038            | 59 043            | 0,14          | 0,13          | -3,3                                     | 0,00                    | -3,3                         | 0,00        |
| Bulgaria                    | 60 764            | 60 764            | 66 326            | 0,14          | 0,15          | 9,2                                      | 0,01                    | 9,2                          | 0,01        |
| Cyprus                      | 34 545            | 34 545            | 24 137            | 0,08          | 0,05          | -30,1                                    | -0,02                   | -30,1                        | -0,02       |
| Slovenia                    | 25 848            | 25 848            | 37 606            | 0,06          | 0,08          | 45,5                                     | 0,03                    | 45,5                         | 0,03        |
| Malta                       | 24 498            | 24 498            | 12 676            | 0,06          | 0,03          | -48,3                                    | -0,03                   | -48,3                        | -0,03       |
| Lithuania                   | 23 136            | 23 136            | 21 998            | 0,05          | 0,05          | -4,9                                     | 0,00                    | -4,9                         | 0,00        |
| Estonia                     | 15 842            | 15 842            | 26 031            | 0,04          | 0,06          | 64,3                                     | 0,02                    | 64,3                         | 0,02        |
| Latvia                      | 13 184            | 13 184            | 17 895            | 0,03          | 0,04          | 35,7                                     | 0,01                    | 35,7                         | 0,01        |
| OTHERS                      | 513 685           | 513 685           | 568 282           | 1,20          | 1,25          | 10,6                                     | 0,13                    | 10,6                         | 0,13        |
| <b>EXTRA EU(27)</b>         | <b>10 959 933</b> | <b>10 959 933</b> | <b>13 129 806</b> | <b>25,57</b>  | <b>28,95</b>  | <b>19,8</b>                              | <b>5,06</b>             | <b>19,8</b>                  | <b>5,06</b> |
| of which:                   |                   |                   |                   |               |               |  |                         |                              |             |
| <b>1-EUROPE</b>             | <b>1 226 152</b>  | <b>1 226 152</b>  | <b>1 433 816</b>  | <b>2,86</b>   | <b>3,16</b>   | <b>16,9</b>                              | <b>0,48</b>             | <b>16,9</b>                  | <b>0,48</b> |
| <b>EFTA</b>                 | <b>467 025</b>    | <b>467 025</b>    | <b>513 719</b>    | <b>1,09</b>   | <b>1,13</b>   | <b>10,0</b>                              | <b>0,11</b>             | <b>10,0</b>                  | <b>0,11</b> |
| Switzerland                 | 372 256           | 372 256           | 401 329           | 0,87          | 0,89          | 7,8                                      | 0,07                    | 7,8                          | 0,07        |
| Norway                      | 90 098            | 90 098            | 104 270           | 0,21          | 0,23          | 15,7                                     | 0,03                    | 15,7                         | 0,03        |
| <b>OTHERS</b>               | <b>759 127</b>    | <b>759 127</b>    | <b>920 097</b>    | <b>1,77</b>   | <b>2,03</b>   | <b>21,2</b>                              | <b>0,38</b>             | <b>21,2</b>                  | <b>0,38</b> |
| Turkey                      | 300 700           | 300 700           | 355 901           | 0,70          | 0,78          | 18,4                                     | 0,13                    | 18,4                         | 0,13        |
| Gibraltar                   | 254 395           | 254 395           | 312 058           | 0,59          | 0,69          | 22,7                                     | 0,13                    | 22,7                         | 0,13        |
| Russian Federation          | 139 594           | 139 594           | 182 236           | 0,33          | 0,40          | 30,5                                     | 0,10                    | 30,5                         | 0,10        |
| Ukraine                     | 19 013            | 19 013            | 21 644            | 0,04          | 0,05          | 13,8                                     | 0,01                    | 13,8                         | 0,01        |
| Croatia                     | 15 357            | 15 357            | 17 751            | 0,04          | 0,04          | 15,6                                     | 0,01                    | 15,6                         | 0,01        |
| <b>2-AFRICA</b>             | <b>4 356 844</b>  | <b>4 356 844</b>  | <b>5 282 621</b>  | <b>10,16</b>  | <b>11,65</b>  | <b>21,2</b>                              | <b>2,16</b>             | <b>21,2</b>                  | <b>2,16</b> |
| <b>MAGHREB</b>              | <b>890 782</b>    | <b>890 782</b>    | <b>1 002 329</b>  | <b>2,08</b>   | <b>2,21</b>   | <b>12,5</b>                              | <b>0,26</b>             | <b>12,5</b>                  | <b>0,26</b> |
| Morocco                     | 389 167           | 389 167           | 460 428           | 0,91          | 1,02          | 18,3                                     | 0,17                    | 18,3                         | 0,17        |
| Algeria                     | 358 329           | 358 329           | 427 795           | 0,84          | 0,94          | 19,4                                     | 0,16                    | 19,4                         | 0,16        |
| Tunisia                     | 143 286           | 143 286           | 114 106           | 0,33          | 0,25          | -20,4                                    | -0,07                   | -20,4                        | -0,07       |
| <b>ACPOL <sup>[5]</sup></b> | <b>2 913 046</b>  | <b>2 913 046</b>  | <b>3 621 341</b>  | <b>6,80</b>   | <b>7,99</b>   | <b>24,3</b>                              | <b>1,65</b>             | <b>24,3</b>                  | <b>1,65</b> |
| Angola                      | 2 331 161         | 2 331 161         | 2 998 757         | 5,44          | 6,61          | 28,6                                     | 1,56                    | 28,6                         | 1,56        |
| Cape Verde                  | 254 089           | 254 089           | 216 780           | 0,59          | 0,48          | -14,7                                    | -0,09                   | -14,7                        | -0,09       |
| Mozambique                  | 216 982           | 216 982           | 288 209           | 0,51          | 0,64          | 32,8                                     | 0,17                    | 32,8                         | 0,17        |
| Guinea-Bissau               | 64 268            | 64 268            | 71 264            | 0,15          | 0,16          | 10,9                                     | 0,02                    | 10,9                         | 0,02        |
| Sao Tome and Principe       | 46 546            | 46 546            | 46 332            | 0,11          | 0,10          | -0,5                                     | 0,00                    | -0,5                         | 0,00        |
| <b>OTHERS</b>               | <b>553 017</b>    | <b>553 017</b>    | <b>658 951</b>    | <b>1,29</b>   | <b>1,45</b>   | <b>19,2</b>                              | <b>0,25</b>             | <b>19,2</b>                  | <b>0,25</b> |
| South Africa                | 85 880            | 85 880            | 101 807           | 0,20          | 0,22          | 18,5                                     | 0,04                    | 18,5                         | 0,04        |
| Nigeria                     | 76 110            | 76 110            | 89 283            | 0,18          | 0,20          | 17,3                                     | 0,03                    | 17,3                         | 0,03        |
| Egypt                       | 71 131            | 71 131            | 87 264            | 0,17          | 0,19          | 22,7                                     | 0,04                    | 22,7                         | 0,04        |
| Equatorial Guinea           | 41 098            | 41 098            | 42 281            | 0,10          | 0,09          | 2,9                                      | 0,00                    | 2,9                          | 0,00        |
| <b>3-AMERICA</b>            | <b>3 168 173</b>  | <b>3 168 173</b>  | <b>3 578 669</b>  | <b>7,39</b>   | <b>7,89</b>   | <b>13,0</b>                              | <b>0,96</b>             | <b>13,0</b>                  | <b>0,96</b> |
| <b>NAFTA</b>                | <b>2 162 946</b>  | <b>2 162 946</b>  | <b>2 247 241</b>  | <b>5,05</b>   | <b>4,96</b>   | <b>3,9</b>                               | <b>0,20</b>             | <b>3,9</b>                   | <b>0,20</b> |
| United States               | 1 496 386         | 1 496 386         | 1 865 523         | 3,49          | 4,11          | 24,7                                     | 0,86                    | 24,7                         | 0,86        |
| Mexico                      | 461 612           | 461 612           | 197 311           | 1,08          | 0,44          | -57,3                                    | -0,62                   | -57,3                        | -0,62       |
| Canada                      | 204 948           | 204 948           | 184 407           | 0,48          | 0,41          | -10,0                                    | -0,05                   | -10,0                        | -0,05       |

(continues)

Period of assessment: january to december

| Countries and regions                        | 1000 Euros       |                  |                  |             | Structure (%) |                          | Growth rates and contributions to growth |             |                              |       |
|--|------------------|------------------|------------------|-------------|---------------|--------------------------|--|-------------|------------------------------|-------|
|  | 2011             |                  | jan-dec          |             | jan-dec       |                          | Last 12 months <sup>[2]</sup>            |             | jan-dec                      |       |
|  | Rank.            | 2011             | 2012             | 2011        | 2012          | y.o.y., % <sup>[3]</sup> | Contrib. p.p. <sup>[4]</sup>             | y.o.y., %   | Contrib. p.p. <sup>[4]</sup> |       |
|  |                  |                  |                  |             |               |                          |  |             |                              | 2011  |
| <b>MERCOSUL</b>                              | <b>649 230</b>   | <b>649 230</b>   | <b>762 319</b>   | <b>1,51</b> | <b>1,68</b>   | <b>17,4</b>              | <b>0,26</b>                              | <b>17,4</b> | <b>0,26</b>                  |       |
| Brazil                                       | 583 114          | 10               | 583 114          | 679 485     | 1,36          | 1,50                     | 16,5                                     | 0,22        | 16,5                         | 0,22  |
| Argentina                                    | 45 220           | 54               | 45 220           | 53 138      | 0,11          | 0,12                     | 17,5                                     | 0,02        | 17,5                         | 0,02  |
| <b>OTHERS</b>                                | <b>355 997</b>   | <b>355 997</b>   | <b>569 109</b>   | <b>0,83</b> | <b>1,25</b>   | <b>59,9</b>              | <b>0,50</b>                              | <b>59,9</b> | <b>0,50</b>                  |       |
| Venezuela                                    | 154 201          | 29               | 154 201          | 313 414     | 0,36          | 0,69                     | 103,3                                    | 0,37        | 103,3                        | 0,37  |
| Chile  | 80 159           | 43               | 80 159           | 86 396      | 0,19          | 0,19                     | 7,8                                      | 0,01        | 7,8                          | 0,01  |
| Cuba   | 22 318           | 66               | 22 318           | 44 393      | 0,05          | 0,10                     | 98,9                                     | 0,05        | 98,9                         | 0,05  |
| <b>4-ASIA</b>                                | <b>1 505 290</b> | <b>1 505 290</b> | <b>2 025 905</b> | <b>3,51</b> | <b>4,47</b>   | <b>34,6</b>              | <b>1,21</b>                              | <b>34,6</b> | <b>1,21</b>                  |       |
| <b>MIDDLE EAST</b>                           | <b>412 886</b>   | <b>412 886</b>   | <b>533 554</b>   | <b>0,96</b> | <b>1,18</b>   | <b>29,2</b>              | <b>0,28</b>                              | <b>29,2</b> | <b>0,28</b>                  |       |
| Saudi Arabia                                 | 92 958           | 36               | 92 958           | 132 703     | 0,22          | 0,29                     | 42,8                                     | 0,09        | 42,8                         | 0,09  |
| United Arab Emirates                         | 90 101           | 37               | 90 101           | 95 538      | 0,21          | 0,21                     | 6,0                                      | 0,01        | 6,0                          | 0,01  |
| Israel                                       | 74 490           | 45               | 74 490           | 106 879     | 0,17          | 0,24                     | 43,5                                     | 0,08        | 43,5                         | 0,08  |
| Iran, Islamic Republic of                    | 35 104           | 58               | 35 104           | 13 319      | 0,08          | 0,03                     | -62,1                                    | -0,05       | -62,1                        | -0,05 |
| Lebanon                                      | 27 755           | 60               | 27 755           | 29 821      | 0,06          | 0,07                     | 7,4                                      | 0,00        | 7,4                          | 0,00  |
| <b>ASEAN</b>                                 | <b>139 001</b>   | <b>139 001</b>   | <b>139 375</b>   | <b>0,32</b> | <b>0,31</b>   | <b>0,3</b>               | <b>0,00</b>                              | <b>0,3</b>  | <b>0,00</b>                  |       |
| Singapore                                    | 81 283           | 42               | 81 283           | 56 441      | 0,19          | 0,12                     | -30,6                                    | -0,06       | -30,6                        | -0,06 |
| Thailand                                     | 16 047           | 70               | 16 047           | 21 239      | 0,04          | 0,05                     | 32,4                                     | 0,01        | 32,4                         | 0,01  |
| Malaysia                                     | 12 253           | 84               | 12 253           | 28 731      | 0,03          | 0,06                     | 134,5                                    | 0,04        | 134,5                        | 0,04  |
| Viet-Nam                                     | 12 007           | 86               | 12 007           | 9 540       | 0,03          | 0,02                     | -20,5                                    | -0,01       | -20,5                        | -0,01 |
| <b>OTHERS</b>                                | <b>953 404</b>   | <b>953 404</b>   | <b>1 352 976</b> | <b>2,22</b> | <b>2,98</b>   | <b>41,9</b>              | <b>0,93</b>                              | <b>41,9</b> | <b>0,93</b>                  |       |
| China  | 396 869          | 14               | 396 869          | 779 032     | 0,93          | 1,72                     | 96,3                                     | 0,89        | 96,3                         | 0,89  |
| Japan  | 191 995          | 28               | 191 995          | 190 184     | 0,45          | 0,42                     | -0,9                                     | 0,00        | -0,9                         | 0,00  |
| Hong Kong                                    | 111 484          | 35               | 111 484          | 123 553     | 0,26          | 0,27                     | 10,8                                     | 0,03        | 10,8                         | 0,03  |
| India  | 89 377           | 39               | 89 377           | 94 976      | 0,21          | 0,21                     | 6,3                                      | 0,01        | 6,3                          | 0,01  |
| Taiwan                                       | 61 858           | 49               | 61 858           | 25 934      | 0,14          | 0,06                     | -58,1                                    | -0,08       | -58,1                        | -0,08 |
| Korea, Republic of                           | 53 835           | 52               | 53 835           | 79 008      | 0,13          | 0,17                     | 46,8                                     | 0,06        | 46,8                         | 0,06  |
| Pakistan                                     | 15 607           | 73               | 15 607           | 13 943      | 0,04          | 0,03                     | -10,7                                    | 0,00        | -10,7                        | 0,00  |
| <b>5-AUSTR,OC,P. REG</b>                     | <b>84 000</b>    | <b>84 000</b>    | <b>90 849</b>    | <b>0,20</b> | <b>0,20</b>   | <b>8,2</b>               | <b>0,02</b>                              | <b>8,2</b>  | <b>0,02</b>                  |       |
| Australia                                    | 72 117           | 46               | 72 117           | 79 071      | 0,17          | 0,17                     | 9,6                                      | 0,02        | 9,6                          | 0,02  |
| New Zealand                                  | 9 016            | 94               | 9 016            | 9 439       | 0,02          | 0,02                     | 4,7                                      | 0,00        | 4,7                          | 0,00  |
| <b>6-DIVERSOS</b>                            | <b>619 474</b>   | <b>619 474</b>   | <b>717 946</b>   | <b>1,45</b> | <b>1,58</b>   | <b>15,9</b>              | <b>0,23</b>                              | <b>15,9</b> | <b>0,23</b>                  |       |
| Stores and provisions (Extra EU)             | 516 631          |                  | 516 631          | 609 889     | 1,21          | 1,34                     | 18,1                                     | 0,22        | 18,1                         | 0,22  |
| Countries/territories not specif. (Extra EU) | 102 843          |                  | 102 843          | 108 057     | 0,24          | 0,24                     | 5,1                                      | 0,01        | 5,1                          | 0,01  |

Memo:

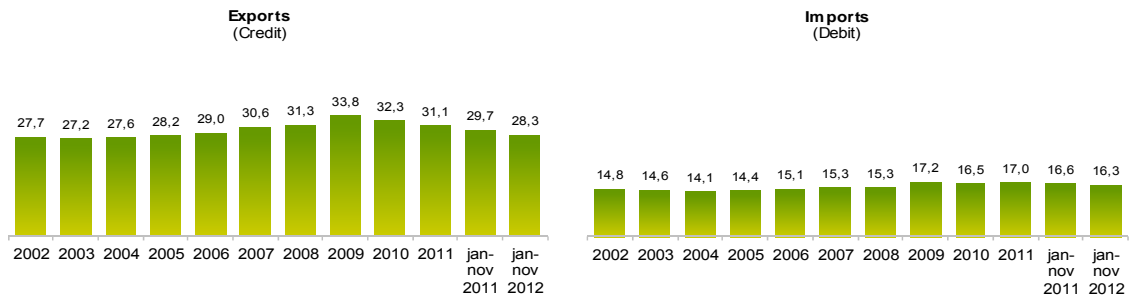
|                           |            |            |            |       |       |      |      |      |      |
|---------------------------|------------|------------|------------|-------|-------|------|------|------|------|
| Intra EU-15               | 30 580 117 | 30 580 117 | 30 780 206 | 71,33 | 67,88 | 0,7  | 0,47 | 0,7  | 0,47 |
| Intra-enlargement         | 1 330 100  | 1 330 100  | 1 437 425  | 3,10  | 3,17  | 8,1  | 0,25 | 8,1  | 0,25 |
| OECD (excl. EU)           | 3 411 589  | 3 411 589  | 3 667 509  | 7,96  | 8,09  | 7,5  | 0,60 | 7,5  | 0,60 |
| OPEC                      | 3 192 832  | 3 192 832  | 4 162 373  | 7,45  | 9,18  | 30,4 | 2,26 | 30,4 | 2,26 |
| ACP <sup>[6]</sup>        | 3 415 531  | 3 415 531  | 4 237 717  | 7,97  | 9,34  | 24,1 | 1,92 | 24,1 | 1,92 |
| CPLP <sup>[7]</sup>       | 3 501 059  | 3 501 059  | 4 308 885  | 8,17  | 9,50  | 23,1 | 1,88 | 23,1 | 1,88 |
| CIS <sup>[8]</sup>        | 180 030    | 180 030    | 232 668    | 0,42  | 0,51  | 29,2 | 0,12 | 29,2 | 0,12 |
| Mashrak                   | 140 808    | 140 808    | 151 799    | 0,33  | 0,33  | 7,8  | 0,03 | 7,8  | 0,03 |
| EUROMED                   | 1 406 780  | 1 406 780  | 1 616 908  | 3,28  | 3,57  | 14,9 | 0,49 | 14,9 | 0,49 |
| Latin American Count.     | 1 452 307  | 1 452 307  | 1 515 849  | 3,39  | 3,34  | 4,4  | 0,15 | 4,4  | 0,15 |
| Cent. Amer. Common Market | 28 924     | 28 924     | 28 367     | 0,07  | 0,06  | -1,9 | 0,00 | -1,9 | 0,00 |
| Andean Community          | 201 181    | 201 181    | 381 548    | 0,47  | 0,84  | 89,7 | 0,42 | 89,7 | 0,42 |
| ASEM (relac. Euro-Asia)   | 886 709    | 886 709    | 1 296 585  | 2,07  | 2,86  | 46,2 | 0,96 | 46,2 | 0,96 |
| EDA (Econ Dinam Asian)    | 336 760    | 336 760    | 334 906    | 0,79  | 0,74  | -0,6 | 0,00 | -0,6 | 0,00 |
| China+H. Kong+Macau       | 523 928    | 523 928    | 924 075    | 1,22  | 2,04  | 76,4 | 0,93 | 76,4 | 0,93 |

Source: GEE, based on data on International Trade statistics from Statistics Portugal (most up-to-date versions available). Estimates for operators under the assimilation threshold and non-responses are included in Intra-EU trade.

Notes:

- [1] Sum of Exports to EU and Exports to third countries.
- [2] 12 months ending in december 2012
- [3] (jan 12-dec 12)/(jan 11-dec 11) x 100 - 100
- [4] Contributions to growth, shift share analysis: (rate of change) x (weight in the previous period) ÷ 100.
- [5] African Countries of Portuguese Official Language
- [6] African, Caribbean and Pacific Group of States
- [7] Community of Portuguese Language Countries
- [8] Commonwealth of Independent States

Chart 5 – Share of Services in total Trade



Source: GEE, based on data from the Balance of Payments Statistics of the Bank of Portugal.

Notes:

The Exports from the Balance of Payments (Credit) corresponds to the Exports in International Trade Statistics (sum of Exports of goods to the EU with the Exports to Third Countries).

The Imports from the Balance of Payments (Debit) corresponds to the Imports in International Trade Statistics (sum of the Imports of goods from the EU with the Imports from Third Countries).

Table 17 - Trade of Goods and Services as a percentage of GDP

|  | 2008        | 2009         | 2010        | 2011        | 2009         |              |             |             | 2010        |             |             |             | 2011        |             |             |              | 2012        |              |             |
|--|-------------|--------------|-------------|-------------|--------------|--------------|-------------|-------------|-------------|-------------|-------------|-------------|-------------|-------------|-------------|--------------|-------------|--------------|-------------|
|  |             |              |             |             | Q1           | Q2           | Q3          | Q4          | Q1          | Q2          | Q3          | Q4          | Q1          | Q2          | Q3          | Q4           | Q1          | Q2           | Q3          |
| <b>Current Values as a percentage of GDP</b> |             |              |             |             |              |              |             |             |             |             |             |             |             |             |             |              |             |              |             |
| <b>Exports (Fob)</b>                         | <b>32,4</b> | <b>28,0</b>  | <b>31,3</b> | <b>35,8</b> | <b>26,8</b>  | <b>27,4</b>  | <b>28,7</b> | <b>29,2</b> | <b>29,3</b> | <b>31,0</b> | <b>32,1</b> | <b>32,8</b> | <b>33,8</b> | <b>35,8</b> | <b>36,5</b> | <b>37,0</b>  | <b>37,9</b> | <b>38,8</b>  | <b>39,3</b> |
| - Goods                                      | 23,8        | 20,0         | 22,8        | 26,4        | 18,8         | 19,4         | 20,8        | 21,1        | 21,2        | 22,5        | 23,4        | 24,0        | 24,9        | 26,3        | 26,9        | 27,5         | 28,2        | 28,9         | 29,2        |
| - Services                                   | 8,6         | 8,0          | 8,5         | 9,4         | 8,1          | 8,0          | 7,8         | 8,1         | 8,1         | 8,5         | 8,6         | 8,7         | 9,0         | 9,5         | 9,6         | 9,5          | 9,6         | 9,9          | 10,1        |
| <b>Imports (Fob)</b>                         | <b>42,5</b> | <b>35,4</b>  | <b>39,0</b> | <b>40,1</b> | <b>34,4</b>  | <b>34,2</b>  | <b>36,6</b> | <b>36,6</b> | <b>36,5</b> | <b>40,1</b> | <b>38,6</b> | <b>40,9</b> | <b>40,1</b> | <b>41,3</b> | <b>40,5</b> | <b>38,5</b>  | <b>39,5</b> | <b>38,7</b>  | <b>39,5</b> |
| - Goods                                      | 36,8        | 30,0         | 33,4        | 34,1        | 29,0         | 28,6         | 31,2        | 31,3        | 31,1        | 34,3        | 32,9        | 35,2        | 34,5        | 35,0        | 34,4        | 32,6         | 33,9        | 32,9         | 33,8        |
| - Services                                   | 5,7         | 5,4          | 5,7         | 6,0         | 5,4          | 5,6          | 5,4         | 5,4         | 5,4         | 5,7         | 5,8         | 5,7         | 5,6         | 6,3         | 6,1         | 5,9          | 5,7         | 5,8          | 5,7         |
| <b>Annual real growth rate</b>               |             |              |             |             |              |              |             |             |             |             |             |             |             |             |             |              |             |              |             |
| <b>Exports (Fob)</b>                         | <b>-0,1</b> | <b>-10,9</b> | <b>10,2</b> | <b>7,2</b>  | <b>-18,6</b> | <b>-14,6</b> | <b>-9,2</b> | <b>-0,2</b> | <b>11,0</b> | <b>11,3</b> | <b>9,7</b>  | <b>9,0</b>  | <b>8,4</b>  | <b>8,3</b>  | <b>6,1</b>  | <b>6,2</b>   | <b>8,2</b>  | <b>3,7</b>   | <b>1,7</b>  |
| - Goods                                      | -0,6        | -12,4        | 11,2        | 7,4         | -22,1        | -17,1        | -9,6        | 0,6         | 14,4        | 12,7        | 9,0         | 9,3         | 8,3         | 8,2         | 5,9         | 7,3          | 10,0        | 5,2          | 2,4         |
| - Services                                   | 1,4         | -6,6         | 7,5         | 6,7         | -8,7         | -7,2         | -8,2        | -2,2        | 2,6         | 7,6         | 11,9        | 8,0         | 8,6         | 8,4         | 6,7         | 3,2          | 3,3         | -0,3         | -0,1        |
| <b>Imports (Fob)</b>                         | <b>2,3</b>  | <b>-10,0</b> | <b>8,0</b>  | <b>-5,9</b> | <b>-15,3</b> | <b>-13,9</b> | <b>-8,6</b> | <b>-1,9</b> | <b>8,8</b>  | <b>14,1</b> | <b>3,6</b>  | <b>6,1</b>  | <b>0,0</b>  | <b>-5,3</b> | <b>-4,4</b> | <b>-13,4</b> | <b>-5,4</b> | <b>-10,8</b> | <b>-8,2</b> |
| - Goods                                      | 2,1         | -10,6        | 8,6         | -6,9        | -16,9        | -15,4        | -8,7        | -0,9        | 10,0        | 16,0        | 2,9         | 6,1         | -0,1        | -7,1        | -5,1        | -14,9        | -5,6        | -10,4        | -7,6        |
| - Services                                   | 3,8         | -6,3         | 4,7         | 0,7         | -4,8         | -4,8         | -7,9        | -7,8        | 1,6         | 3,1         | 7,8         | 6,5         | 0,8         | 5,8         | -0,5        | -3,4         | -4,1        | -12,8        | -11,3       |

Source: GEE, based on data from the Quarterly National Accounts (base 2006) of Statistics Portugal. Includes Intra and Extracommunity trade.

Table 18 - Goods and Services (Credit) - Services components

| CREDIT<br>(Exports)                 | january to november       |               | Structure (%) |              |              |              | Growth rates and contributions to growth |                              |            |                              |
|-------------------------------------|---------------------------|---------------|---------------|--------------|--------------|--------------|--|------------------------------|------------|------------------------------|
|                                     |                           |               | Annual        |              | jan-nov      |              | Last 12 months <sup>[1]</sup>            |                              | jan-nov    |                              |
|                                     | 2011                      | 2012          | 2006          | 2011         | 2011         | 2012         | y.o.y., % <sup>[2]</sup>                 | contrib. p.p. <sup>[3]</sup> | y.o.y., %  | contrib. p.p. <sup>[3]</sup> |
|                                     | <b>Goods and Services</b> | <b>57 310</b> | <b>59 903</b> | <b>100,0</b> | <b>100,0</b> | <b>100,0</b> | <b>100,0</b>                             | <b>4,5</b>                   | <b>4,5</b> | <b>4,5</b>                   |
| <b>Goods</b>                        | <b>39 750</b>             | <b>42 284</b> | <b>71,0</b>   | <b>69,2</b>  | <b>69,4</b>  | <b>70,6</b>  | <b>6,2</b>                               | <b>4,3</b>                   | <b>6,4</b> | <b>4,4</b>                   |
| <b>Services</b>                     | <b>17 560</b>             | <b>17 620</b> | <b>29,0</b>   | <b>30,8</b>  | <b>30,6</b>  | <b>29,4</b>  | <b>0,6</b>                               | <b>0,2</b>                   | <b>0,3</b> | <b>0,1</b>                   |
| Transportation                      | 4 755                     | 4 986         | 7,1           | 8,3          | 8,3          | 8,3          | 4,6                                      | 0,4                          | 4,9        | 0,4                          |
| Travel                              | 7 573                     | 8 005         | 13,2          | 13,1         | 13,2         | 13,4         | 5,4                                      | 0,7                          | 5,7        | 0,8                          |
| Communications services             | 443                       | 465           | 0,9           | 0,8          | 0,8          | 0,8          | 1,9                                      | 0,0                          | 5,1        | 0,0                          |
| Construction services               | 516                       | 502           | 0,8           | 0,9          | 0,9          | 0,8          | -2,2                                     | 0,0                          | -2,7       | 0,0                          |
| Insurance services                  | 99                        | 90            | 0,2           | 0,2          | 0,2          | 0,1          | -9,8                                     | 0,0                          | -9,3       | 0,0                          |
| Financial services                  | 202                       | 214           | 0,4           | 0,4          | 0,4          | 0,4          | 8,0                                      | 0,0                          | 5,6        | 0,0                          |
| Computer and information services   | 334                       | 418           | 0,3           | 0,6          | 0,6          | 0,7          | 27,6                                     | 0,2                          | 25,3       | 0,1                          |
| Royalties and license fees          | 37                        | 35            | 0,1           | 0,1          | 0,1          | 0,1          | 5,3                                      | 0,0                          | -5,1       | 0,0                          |
| Other business services             | 3 200                     | 2 435         | 5,2           | 5,8          | 5,6          | 4,1          | -20,8                                    | -1,2                         | -23,9      | -1,3                         |
| Personal, cult., and recreat. Serv. | 217                       | 237           | 0,4           | 0,4          | 0,4          | 0,4          | 6,2                                      | 0,0                          | 9,1        | 0,0                          |
| Government services                 | 185                       | 231           | 0,3           | 0,3          | 0,3          | 0,4          | 24,1                                     | 0,1                          | 25,3       | 0,1                          |

Source: GEE, based on data from the Balance of Payments Statistics of Banco de Portugal.

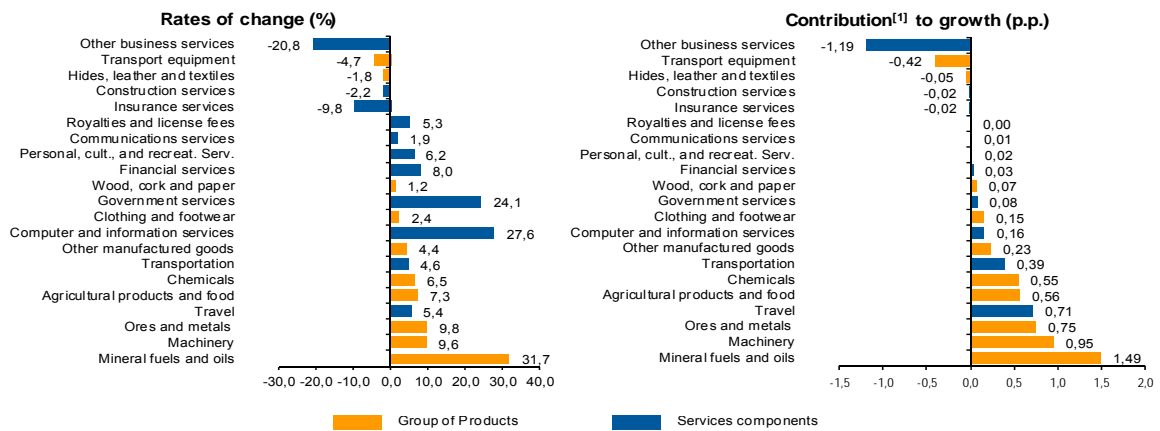
Notes:

[1] 12 months ending in november 2012

[2] (dec 11-nov 12)/(dec 10-nov 11) x 100 - 100

[3] Contributions to growth, shift share analysis: (rate of change) x (weight in the previous period) ÷ 100. Measures the proportion of growth of Imports attributable to each category specified.

Chart 6 - Growth rates of exports of goods and services and contribution to growth  
Previous 12 months ending in november 2012



Source: GEE, based on data from the Bank de Portugal for Exports of goods and services, and Statistics Portugal, for the structure of exports of goods. The distribution of the contribution of growth of exports of goods (data from the Balance of Payments, Bank of Portugal) by group of products follows the structure implicit in the database of International Trade Statistics Portugal for analogous Goods (sum of Exports of goods to the EU with the Exports to Third Countries).

Notes:

The Exports from the Balance of Payments (Credit) corresponds to the Exports in International Trade Statistics (sum of Exports of goods to the EU with the Exports to Third Countries).

[1] Contribution to growth, shift-share analysis: (rate of change) x (weight in the previous period) ÷ 100. The sum corresponds to the growth rate of Exports of Goods and Services over the past 12 months, according to statistics from the Balance of Payments Bank of Portugal (4,5%).

**Table 19 - Goods and Services (Credit) - Services components**  
Annual rate of change (2004-2012)

| Credit (Exports)                    | Share in 2011 (%) | 2004       | 2005       | 2006        | 2007        | 2008       | 2009         | 2010        | 2011        | jan-nov 2012 |
|-------------------------------------|-------------------|------------|------------|-------------|-------------|------------|--------------|-------------|-------------|--------------|
| <b>Goods and Services</b>           | <b>100,0</b>      | <b>6,3</b> | <b>1,5</b> | <b>16,4</b> | <b>9,9</b>  | <b>2,8</b> | <b>-15,3</b> | <b>13,7</b> | <b>13,2</b> | <b>4,5</b>   |
| <b>Goods</b>                        | <b>69,2</b>       | <b>5,7</b> | <b>0,7</b> | <b>15,1</b> | <b>7,5</b>  | <b>1,8</b> | <b>-18,3</b> | <b>16,8</b> | <b>15,2</b> | <b>6,4</b>   |
| <b>Services</b>                     | <b>30,8</b>       | <b>8,0</b> | <b>3,5</b> | <b>19,9</b> | <b>15,7</b> | <b>5,3</b> | <b>-8,7</b>  | <b>7,7</b>  | <b>9,0</b>  | <b>0,3</b>   |
| Transportation                      | 8,3               | 9,1        | 11,4       | 41,7        | 18,9        | 10,4       | -12,6        | 13,0        | 10,9        | 4,9          |
| Travel                              | 13,1              | 5,9        | 0,1        | 7,6         | 10,9        | 0,5        | -7,2         | 10,0        | 7,2         | 5,7          |
| Communications services             | 0,8               | 18,8       | 20,4       | 8,6         | 16,4        | 4,7        | -15,6        | -2,9        | 0,5         | 5,1          |
| Construction services               | 0,9               | 27,4       | -15,7      | 45,9        | 40,9        | 8,3        | -21,9        | -1,9        | 13,9        | -2,7         |
| Insurance services                  | 0,2               | 32,9       | -26,5      | 14,2        | 5,9         | 5,1        | 3,3          | -9,1        | 11,1        | -9,3         |
| Financial services                  | 0,4               | 30,6       | -9,2       | 16,8        | 25,8        | -4,7       | -32,7        | 4,4         | 42,9        | 5,6          |
| Computer and information services   | 0,6               | 20,6       | 4,5        | 41,6        | 36,8        | 15,3       | 1,0          | 1,1         | 37,7        | 25,3         |
| Royalties and license fees          | 0,1               | -15,7      | 69,5       | 51,4        | 10,0        | -29,8      | 150,5        | -71,7       | 41,2        | -5,1         |
| Other business services             | 5,8               | 4,3        | 8,9        | 27,0        | 19,5        | 10,2       | -5,9         | 1,7         | 8,7         | -23,9        |
| Personal, cult., and recreat. Serv. | 0,4               | 30,8       | 6,7        | 22,5        | -6,3        | 7,1        | 10,7         | 20,7        | -11,6       | 9,1          |
| Government services                 | 0,3               | 6,8        | -15,4      | 17,7        | 10,3        | 0,5        | -2,4         | 17,6        | 3,7         | 25,3         |

Source: GEE, based on data from the Balance of Payments Statistics of Banco de Portugal.

**Table 20 - Goods and Services (Debit) - Services components**

values in Millions of Euros

| DEBIT (Imports)                     | january to november |               | Structure (%) |              |              |              | Growth rates and contributions to growth |                              |             |                              |
|-------------------------------------|---------------------|---------------|---------------|--------------|--------------|--------------|--|------------------------------|-------------|------------------------------|
|                                     |                     |               | Annual        |              | jan-nov      |              | Last 12 months <sup>[1]</sup>            |                              | jan-nov     |                              |
|                                     | 2011                | 2012          | 2006          | 2011         | 2011         | 2012         | y.o.y., % <sup>[2]</sup>                 | contrib. p.p. <sup>[3]</sup> | y.o.y., %   | contrib. p.p. <sup>[3]</sup> |
| <b>Goods and Services</b>           | <b>63 434</b>       | <b>59 809</b> | <b>100,0</b>  | <b>100,0</b> | <b>100,0</b> | <b>100,0</b> | <b>-6,4</b>                              | <b>-6,4</b>                  | <b>-5,7</b> | <b>-5,7</b>                  |
| <b>Goods</b>                        | <b>52 934</b>       | <b>50 234</b> | <b>84,9</b>   | <b>83,3</b>  | <b>83,4</b>  | <b>84,0</b>  | <b>-6,1</b>                              | <b>-5,1</b>                  | <b>-5,1</b> | <b>-4,3</b>                  |
| <b>Services</b>                     | <b>10 500</b>       | <b>9 576</b>  | <b>15,1</b>   | <b>16,7</b>  | <b>16,6</b>  | <b>16,0</b>  | <b>-8,0</b>                              | <b>-1,3</b>                  | <b>-8,8</b> | <b>-1,5</b>                  |
| Transportation                      | 3 132               | 3 012         | 4,7           | 4,9          | 4,9          | 5,0          | -4,0                                     | -0,2                         | -3,8        | -0,2                         |
| Travel                              | 2 744               | 2 719         | 4,2           | 4,3          | 4,3          | 4,5          | -0,9                                     | 0,0                          | -0,9        | 0,0                          |
| Communications services             | 396                 | 393           | 0,6           | 0,6          | 0,6          | 0,7          | -3,1                                     | 0,0                          | -0,8        | 0,0                          |
| Construction services               | 109                 | 93            | 0,2           | 0,2          | 0,2          | 0,2          | -15,5                                    | 0,0                          | -15,0       | 0,0                          |
| Insurance services                  | 209                 | 232           | 0,3           | 0,3          | 0,3          | 0,4          | 8,8                                      | 0,0                          | 10,9        | 0,0                          |
| Financial services                  | 462                 | 397           | 0,3           | 0,8          | 0,7          | 0,7          | -7,7                                     | -0,1                         | -14,1       | -0,1                         |
| Computer and information services   | 403                 | 341           | 0,4           | 0,6          | 0,6          | 0,6          | -13,7                                    | -0,1                         | -15,2       | -0,1                         |
| Royalties and license fees          | 353                 | 322           | 0,5           | 0,6          | 0,6          | 0,5          | -9,3                                     | -0,1                         | -8,8        | 0,0                          |
| Other business services             | 2 168               | 1 550         | 3,0           | 3,5          | 3,4          | 2,6          | -25,2                                    | -0,9                         | -28,5       | -1,0                         |
| Personal, cult., and recreat. Serv. | 441                 | 435           | 0,6           | 0,7          | 0,7          | 0,7          | -1,2                                     | 0,0                          | -1,4        | 0,0                          |
| Government services                 | 82                  | 81            | 0,3           | 0,1          | 0,1          | 0,1          | -3,2                                     | 0,0                          | -0,8        | 0,0                          |

Source: GEE, based on data from the Balance of Payments Statistics of Banco de Portugal for the Total Exports of Goods and Services.

Notes:

Fob values for Imports of goods.

[1] 12 months ending in november 2012

[2] (dec 11-nov 12)/(dec 10-nov 11) x 100 - 100

[3] Contributions to growth, shift share analysis: (rate of change) x (weight in the previous period) ÷ 100. Measures the proportion of growth of Imports attributable to each category specified.