

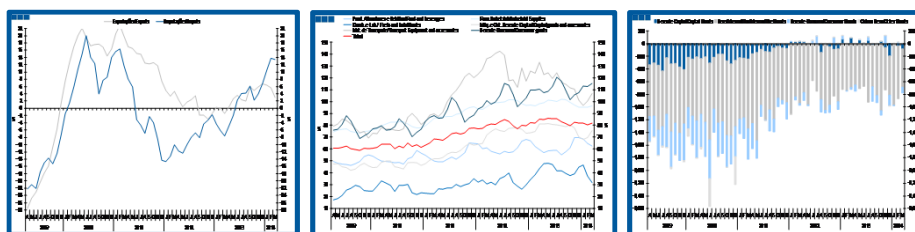
Estatísticas Temáticas de Conjuntura

Short-term Thematic Statistics

- Nº 5/2014 -

9 de maio de 2014

May, 09, 2014



Comércio Internacional de Bens

International Trade of Goods

- Março de 2014 -

- March, 2014 -

Fonte: Instituto Nacional de Estatística

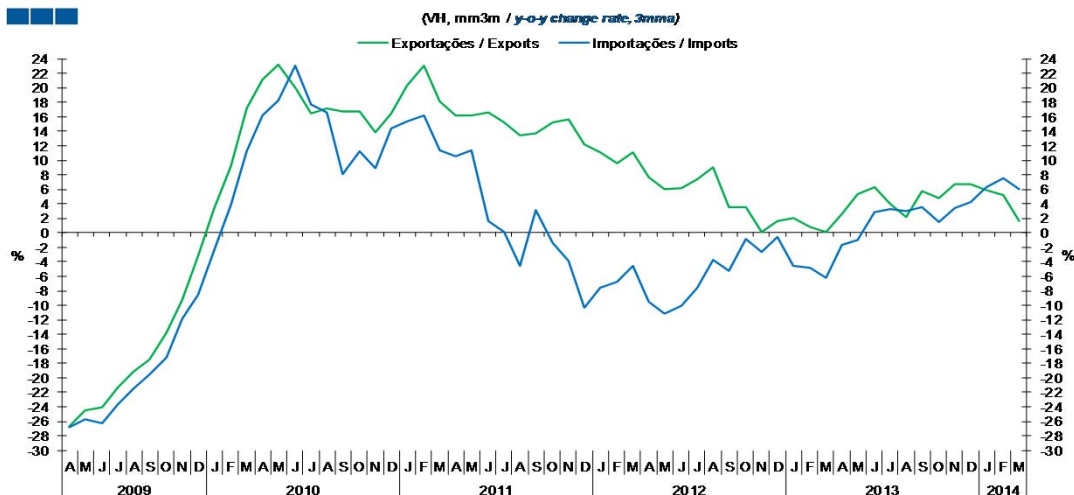
Source: Statistics Portugal

Índice / Index

	Página / Page
1. Total	
Importações e Exportações / <i>Imports and Exports</i>	3
Taxa de Cobertura / <i>Coverage Rate</i>	3
Saldo / <i>Balance</i>	4
2. Zona Euro-17 / <i>Euro Area-17</i>	
Importações e Exportações / <i>Imports and Exports</i>	5
Taxa de Cobertura / <i>Coverage Rate</i>	5
Saldo / <i>Balance</i>	6
3. Intracomunitário / <i>Intra-Community</i>	
Importações e Exportações / <i>Imports and Exports</i>	7
Taxa de Cobertura / <i>Coverage Rate</i>	7
Saldo / <i>Balance</i>	8
4. Extracomunitário / <i>Extra-Community</i>	
Importações e Exportações / <i>Imports and Exports</i>	9
Taxa de Cobertura / <i>Coverage Rate</i>	9
Saldo / <i>Balance</i>	10
5. Grandes Categorias Económicas / <i>Broad Economic Categories</i>	
Exportações / <i>Exports</i>	11
Importações / <i>Imports</i>	11
Taxa de Cobertura / <i>Coverage Rate</i>	12
Saldo / <i>Balance</i>	12
6. Classes Básicas de Bens do Sistema Europeu de Contas Nacionais / <i>Basic Classes of Goods in the European System of Accounts</i>	
Exportações / <i>Exports</i>	13
Importações / <i>Imports</i>	13
Taxa de Cobertura / <i>Coverage Rate</i>	14
Saldo / <i>Balance</i>	14
Estrutura do Saldo / <i>Balance Structure</i>	15
7. Índice GEE de Comércio Internacional de Bens / <i>GEE Index of International Trade of Goods</i>	
Total / <i>Total</i>	16
Zona Euro / <i>Euro Area</i>	16
Intracomunitário / <i>Intra-Community</i>	17
Extracomunitário / <i>Extra-Community</i>	17

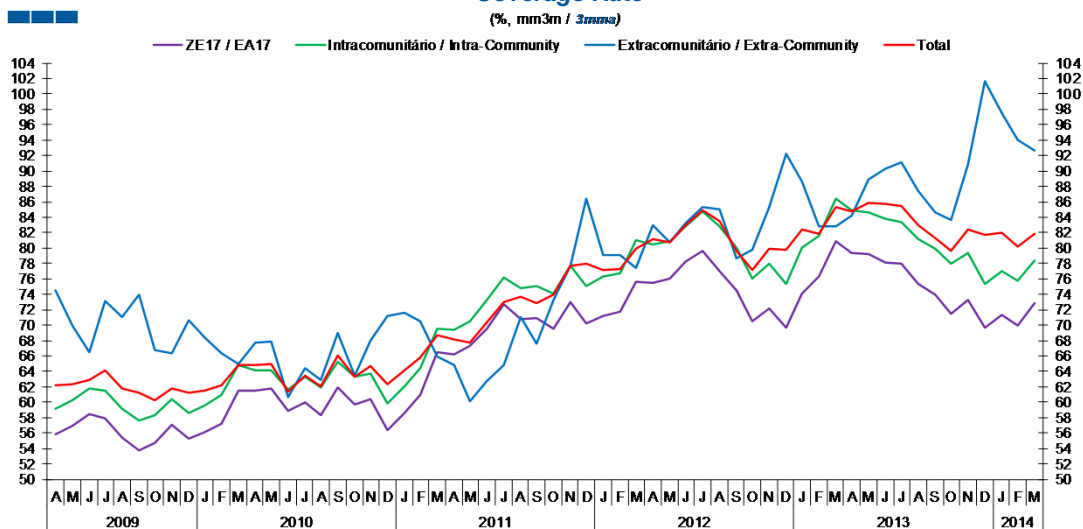
1. Total

Gráfico / Graph 1.1.
Importações e Exportações
Imports and Exports



	2012												2013												2014		
	A	M	J	J	A	S	O	N	D	J	F	M	A	M	J	J	A	S	O	N	D	J	F	M			
Exportações / Exports	7.7	6.0	6.1	7.4	9.1	3.6	3.5	0.1	1.7	2.0	0.9	0.1	2.6	5.3	6.2	4.0	2.2	5.8	4.7	6.7	6.7	5.9	5.2	1.7			
Importações / Imports	-9.5	-11.2	-10.0	-7.6	-3.7	-5.2	-0.8	-2.7	-0.6	-4.5	-4.8	-6.2	-1.7	-0.9	2.8	3.2	3.0	3.6	1.4	3.5	4.2	6.3	7.5	6.0			

Gráfico / Graph 1.2.
Taxa de Cobertura
Coverage Rate

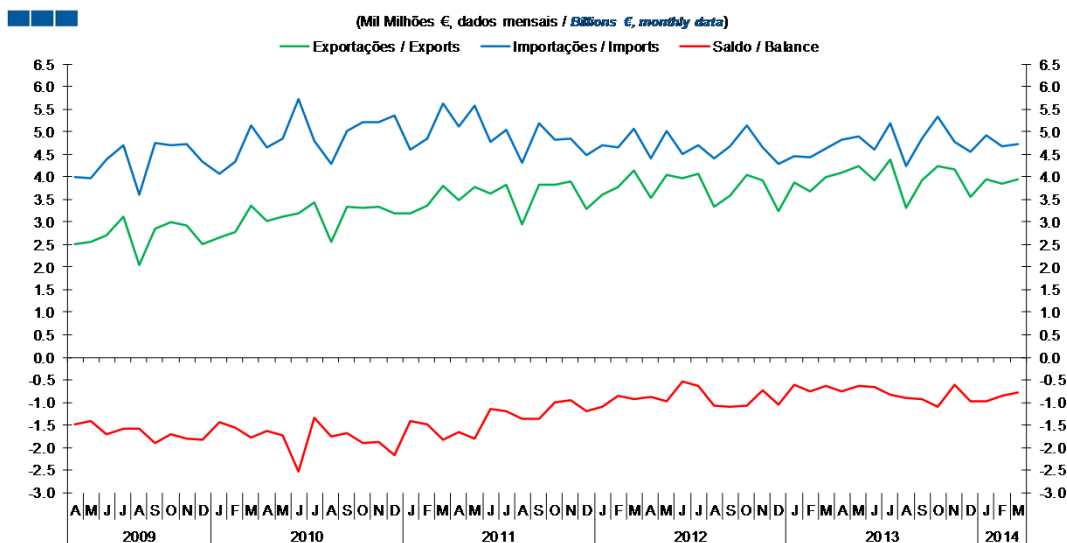


Fonte / Source: INE

	2012												2013												2014		
	A	M	J	J	A	S	O	N	D	J	F	M	A	M	J	J	A	S	O	N	D	J	F	M			
ZE 17 / EA 17	75.5	76.0	78.2	79.6	77.0	74.6	70.5	72.1	69.6	74.1	76.3	80.9	79.4	79.3	78.2	78.0	75.4	73.9	71.5	73.3	69.6	71.3	69.9	72.9			
Intracomunitário / Intra-community	80.5	80.8	82.8	84.7	82.9	80.1	76.0	78.0	75.4	80.0	81.6	86.4	84.9	84.7	83.8	83.4	81.1	80.0	78.0	79.4	75.4	77.0	75.7	78.4			
Extracomunitário / Extra-community	83.0	80.8	83.3	85.3	85.1	78.7	79.8	85.3	92.3	88.7	82.8	82.9	84.2	88.9	90.4	91.1	87.4	84.7	83.6	90.9	101.7	97.5	94.1	92.6			
Total	81.1	80.8	82.9	84.9	83.5	79.7	77.1	79.9	79.8	82.3	81.9	85.4	84.7	85.9	85.7	85.5	82.9	81.4	79.7	82.4	81.7	82.0	80.2	81.9			

1. Total

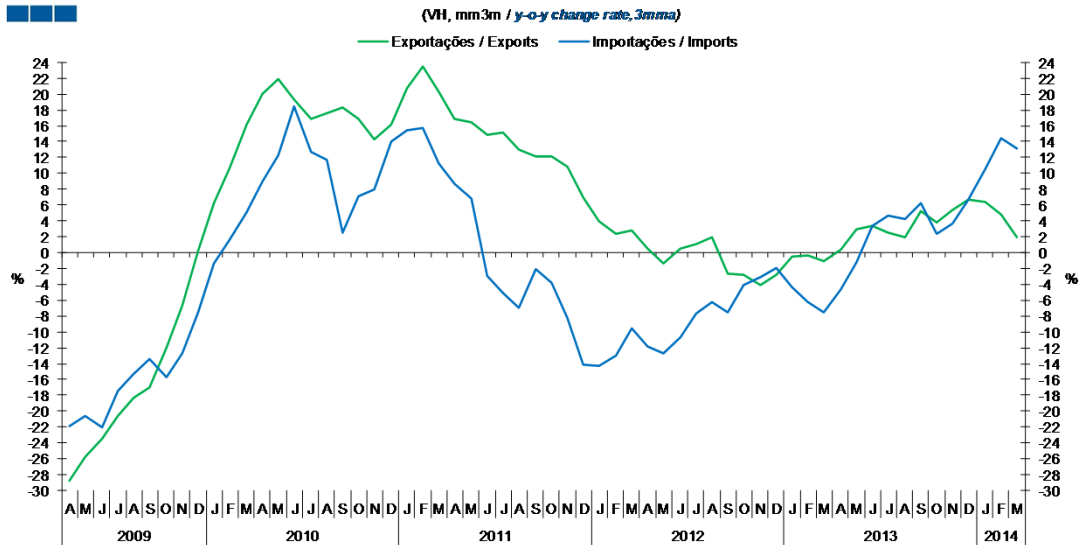
Gráfico / Graph 1.3.
Saldo
Balance



	2012												2013												2014		
	A	M	J	J	A	S	O	N	D	J	F	M	A	M	J	J	A	S	O	N	D	J	F	M			
Exportações / Exports	3.5	4.0	4.0	4.1	3.3	3.6	4.0	3.9	3.2	3.9	3.7	4.0	4.1	4.2	3.9	4.4	3.3	3.9	4.2	4.2	3.6	3.9	3.8	4.0			
Importações / Imports	4.4	5.0	4.5	4.7	4.4	4.7	5.1	4.6	4.3	4.5	4.4	4.6	4.8	4.9	4.6	5.2	4.2	4.9	5.3	4.8	4.5	4.9	4.7	4.7			
Saldo / Balance	-0.9	-1.0	-0.5	-0.6	-1.1	-1.1	-1.1	-0.7	-1.0	-0.6	-0.7	-0.6	-0.7	-0.6	-0.7	-0.8	-0.9	-0.9	-1.1	-0.6	-1.0	-1.0	-0.8	-0.8			

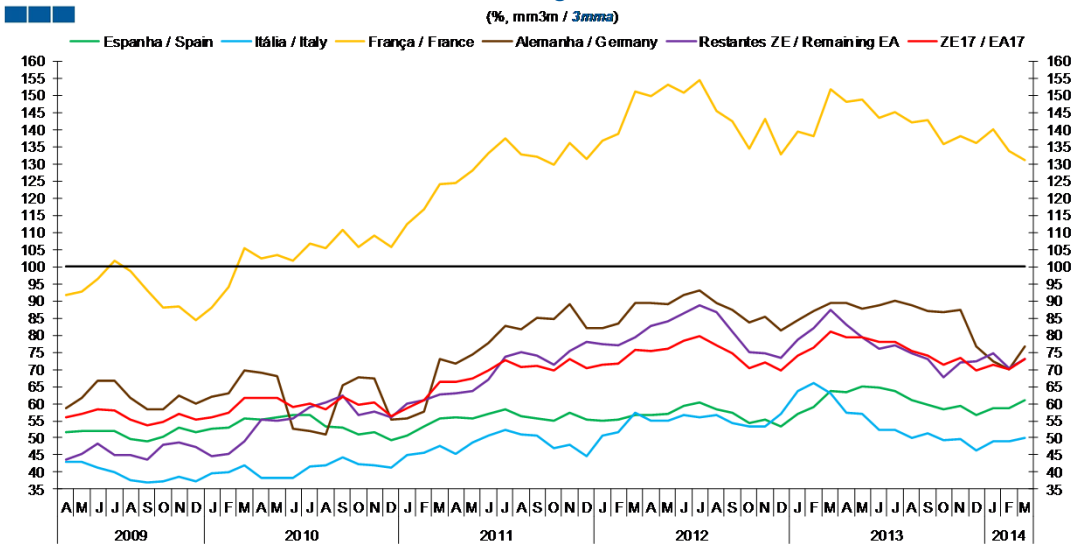
2. Zona Euro-17 / Euro Area-17

Gráfico / Graph 2.1.
 Importações e Exportações
 Imports and Exports



	2012		2013		2014																			
	A	M	J	J	A	S	O	N	D	J	F	M	A	M	J	J	A	S	O	N	D	J	F	M
Exportações / Exports	0.5	-1.4	0.4	1.1	2.0	-2.7	-2.8	-4.1	-2.8	-0.5	-0.4	-1.0	0.3	2.9	3.3	2.6	2.0	5.3	3.8	5.4	6.7	6.4	4.9	1.9
Importações / Imports	-11.8	-12.7	-10.6	-7.7	-6.2	-7.5	-4.1	-3.0	-1.9	-4.3	-6.2	-7.5	-4.6	-1.3	3.4	4.6	4.2	6.2	2.4	3.7	6.7	10.6	14.4	13.1

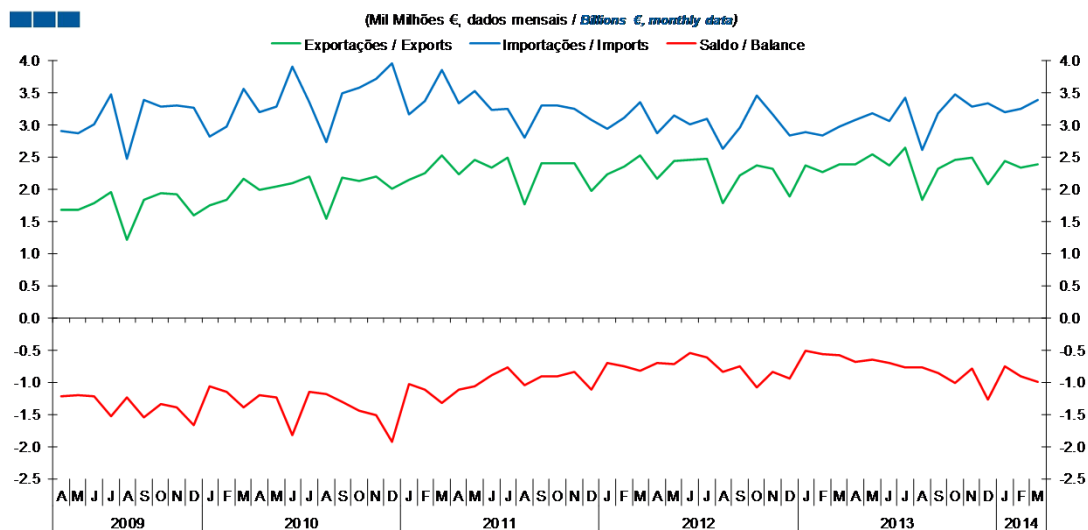
Gráfico / Graph 2.2.
 Taxa de Cobertura
 Coverage Rate



	2012		2013		2014																			
	A	M	J	J	A	S	O	N	D	J	F	M	A	M	J	J	A	S	O	N	D	J	F	M
Espanha / Spain	56.7	57.0	59.4	60.4	58.5	57.3	54.5	55.4	53.4	57.0	59.0	63.6	63.4	64.9	64.8	63.8	61.1	59.6	58.3	59.3	56.5	58.7	58.7	61.1
Itália / Italy	55.0	55.1	56.6	55.9	56.6	54.2	53.3	53.2	57.1	63.6	65.9	63.0	57.5	57.0	52.4	52.4	50.0	51.4	49.2	49.6	46.5	48.9	48.9	50.1
França / France	149.7	153.3	150.8	154.6	145.4	142.5	134.5	143.1	132.7	139.5	138.2	151.9	148.2	148.7	143.5	145.1	142.2	142.7	135.8	138.0	136.2	140.0	133.8	131.2
Alemanha / Germany	89.3	89.0	91.8	92.9	89.5	87.5	83.5	85.4	81.2	84.3	87.0	89.5	89.5	87.6	88.8	90.0	88.8	86.9	86.6	87.3	76.8	72.4	70.0	76.6
Restantes ZE / Remaining EA	82.8	84.1	86.2	88.7	86.6	81.0	74.9	74.7	73.5	78.6	82.1	87.2	83.1	79.4	76.0	77.0	74.6	72.9	67.7	72.0	72.5	74.7	70.2	72.9
ZE 17 / EA 17	75.5	76.0	78.2	79.6	77.0	74.6	70.5	72.1	69.6	74.1	76.3	80.9	79.4	79.3	78.2	78.0	75.4	73.9	71.5	73.3	69.6	71.3	69.9	72.9

2. Zona Euro-17 / Euro Area-17

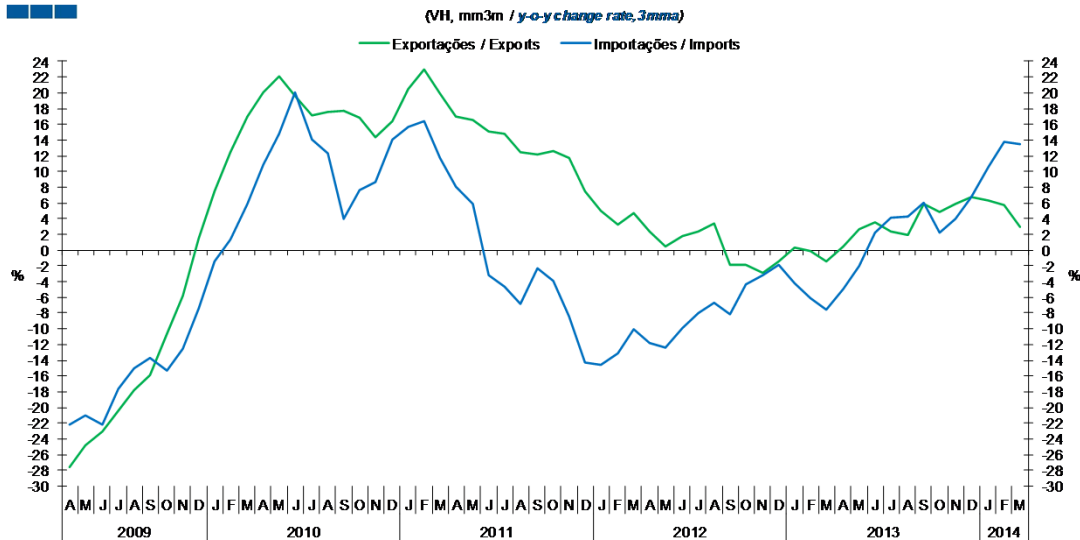
Gráfico / Graph 2.3.
 Saldo
 Balance



	2012				2013												2014							
	A	M	J	J	A	S	O	N	D	J	F	M	A	M	J	J	A	S	O	N	D	J	F	M
Exportações / Exports	2.2	2.4	2.5	2.5	1.8	2.2	2.4	2.3	1.9	2.4	2.3	2.4	2.4	2.5	2.4	2.6	1.8	2.3	2.5	2.5	2.1	2.4	2.3	2.4
Importações / Imports	2.9	3.1	3.0	3.1	2.6	3.0	3.4	3.2	2.8	2.9	2.8	3.0	3.1	3.2	3.1	3.4	2.6	3.2	3.5	3.3	3.3	3.2	3.2	3.4
Saldo / Balance	-0.7	-0.7	-0.6	-0.6	-0.8	-0.8	-1.1	-0.8	-1.0	-0.5	-0.6	-0.6	-0.7	-0.7	-0.7	-0.8	-0.8	-0.9	-1.0	-0.8	-1.3	-0.8	-0.9	-1.0

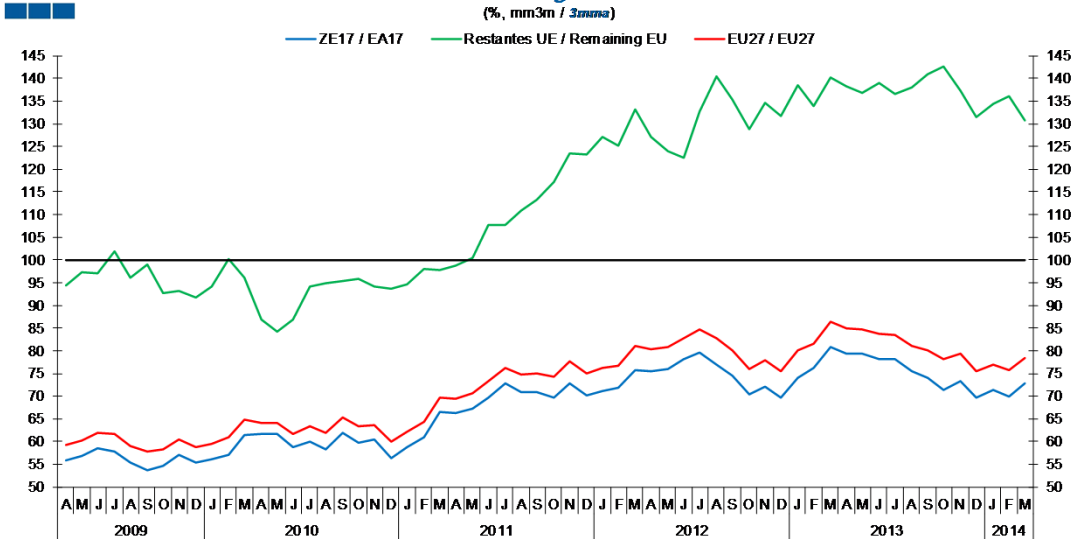
3. Intracomunitário / Intra-Community

Gráfico / Graph 3.1.
 Importações e Exportações
 Imports and Exports



	2012			2013			2014																	
	A	M	J	J	A	S	O	N	D	J	F	M	A	M	J	J	A	S	O	N	D	J	F	M
Exportações / Exports	2.3	0.5	1.8	2.3	3.4	-1.9	-1.9	-2.9	-1.4	0.3	-0.1	-1.5	0.4	2.6	3.5	2.4	2.0	5.9	4.9	5.8	6.7	6.4	5.7	3.0
Importações / Imports	-11.8	-12.4	-9.9	-8.0	-6.7	-8.1	-4.3	-3.2	-1.8	-4.3	-6.1	-7.6	-4.9	-2.0	2.3	4.1	4.2	6.1	2.2	4.0	6.7	10.5	13.8	13.5

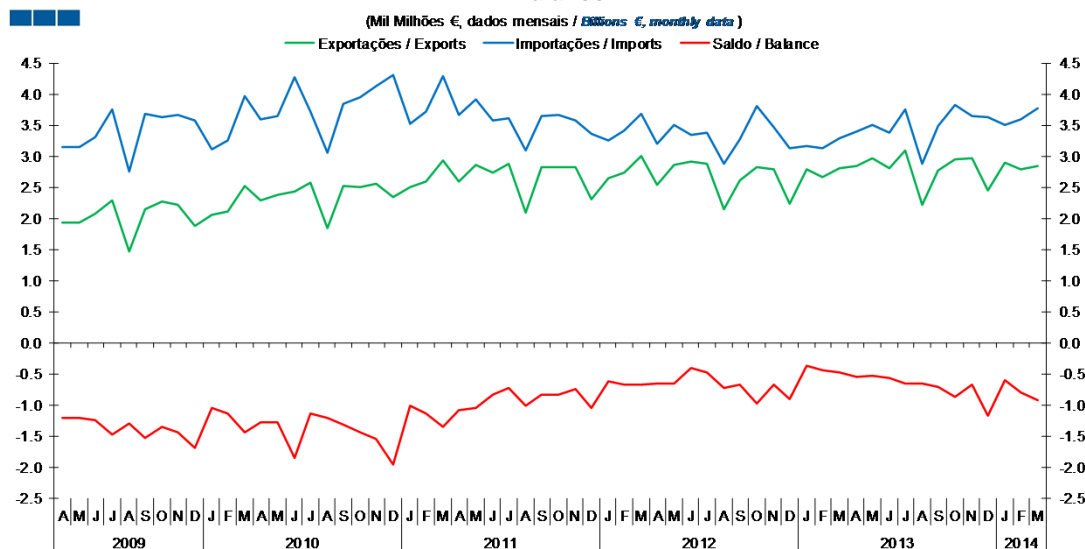
Gráfico / Graph 3.2.
 Taxa de Cobertura
 Coverage Rate



	2012			2013			2014																	
	A	M	J	J	A	S	O	N	D	J	F	M	A	M	J	J	A	S	O	N	D	J	F	M
ZE 17 / EA 17	75.5	76	78.2	79.6	77	74.6	70.5	72.1	69.6	74.1	76.3	80.9	79.4	79.3	78.2	78	75.4	73.9	71.5	73.3	69.6	71.3	69.9	72.9
UE 27 / EU 27	80.5	80.8	82.8	84.7	82.9	80.1	76	78	75.4	80	81.6	86.4	84.9	84.7	83.8	83.4	81.1	80	78	79.4	75.4	77	75.7	78.4
Restantes UE / Remaining EU	127.1	123.9	122.5	132.8	140.4	135.3	128.9	134.7	131.8	138.6	133.9	140.1	138.3	136.9	138.9	136.7	137.9	141.0	142.5	137.2	131.5	134.3	136.1	130.9

3. Intracomunitário / Intra-Community

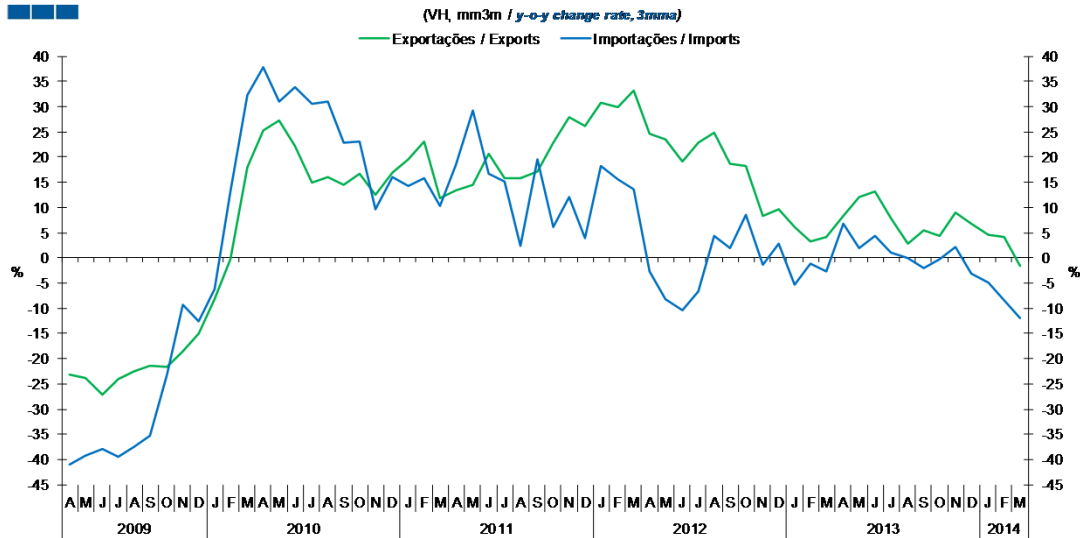
Gráfico / Graph 3.3.
 Saldo
 Balance



	2012												2013												2014		
	A	M	J	J	A	S	O	N	D	J	F	M	A	M	J	J	A	S	O	N	D	J	F	M			
Exportações / Exports	2.5	2.9	2.9	2.9	2.1	2.6	2.8	2.8	2.2	2.8	2.7	2.8	2.8	3.0	2.8	3.1	2.2	2.8	3.0	3.0	2.4	2.9	2.8	2.8			
Importações / Imports	3.2	3.5	3.3	3.4	2.9	3.3	3.8	3.5	3.1	3.2	3.1	3.3	3.4	3.5	3.4	3.7	2.9	3.5	3.8	3.7	3.6	3.5	3.6	3.8			
Saldo / Balance	-0.7	-0.7	-0.4	-0.5	-0.7	-0.7	-1.0	-0.7	-0.9	-0.4	-0.5	-0.5	-0.6	-0.5	-0.6	-0.7	-0.7	-0.7	-0.9	-0.7	-1.2	-0.6	-0.8	-0.9			

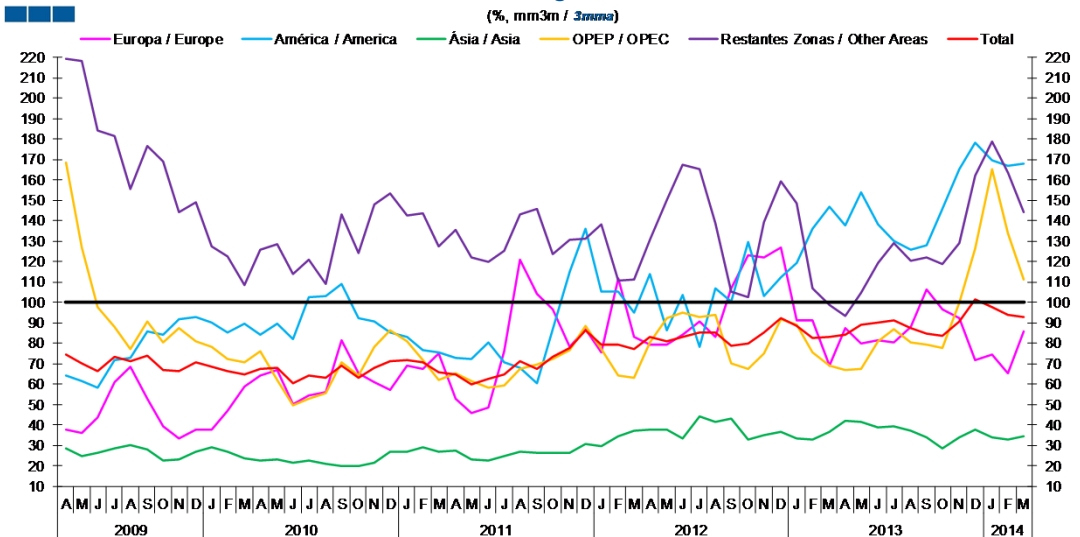
4. Extracomunitário / Extra-Community

Gráfico / Graph 4.1.
 Importações e Exportações
 Imports and Exports



	2012									2013									2014					
	A	M	J	J	A	S	O	N	D	J	F	M	A	M	J	J	A	S	O	N	D	J	F	M
Exportações / Exports	24.7	23.5	19.1	22.8	24.9	18.7	18.2	8.3	9.7	6.2	3.3	4.2	8.3	12.1	13.1	7.9	2.8	5.5	4.4	8.9	6.7	4.6	4.1	-1.7
Importações / Imports	-2.6	-8.1	-10.3	-6.7	4.4	2.0	8.6	-1.3	2.8	-5.3	-1.2	-2.7	6.8	1.9	4.3	1.1	0.1	-1.9	-0.3	2.2	-3.1	-4.9	-8.4	-12.0

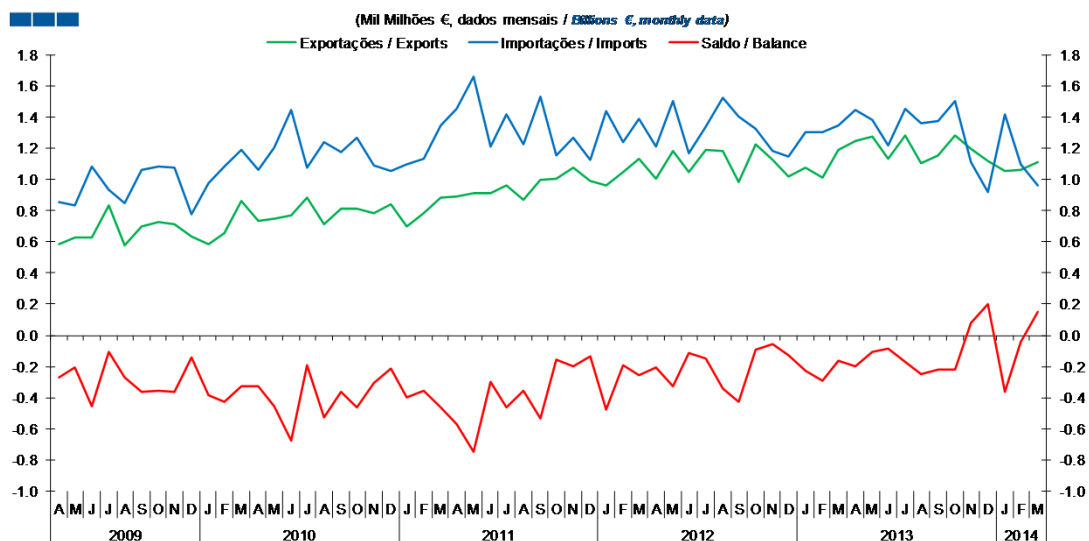
Gráfico / Graph 4.2.
 Taxa de Cobertura
 Coverage Rate



	2012									2013									2014					
	A	M	J	J	A	S	O	N	D	J	F	M	A	M	J	J	A	S	O	N	D	J	F	M
Europa / Europe	79.3	79.5	84.2	90.7	83.1	106.8	123.1	122.0	126.6	91.4	91.1	69.2	87.5	79.7	81.3	80.4	88.2	106.6	96.5	92.1	71.5	74.6	65.4	86.1
América / America	114.0	86.3	103.5	78.3	106.9	100.6	129.4	103.0	112.0	119.5	135.9	146.6	137.8	153.9	138.0	130.0	125.5	127.8	145.7	165.3	178.0	169.4	166.9	167.8
Ásia / Asia	38.0	38.0	33.5	44.0	41.5	43.4	33.1	35.2	36.5	33.4	33.1	36.9	42.0	41.3	38.6	39.3	37.0	33.7	28.7	34.2	37.7	33.8	33.0	34.6
OPEP / OPEC	80.3	92.3	94.9	92.9	94.1	70.1	67.7	74.7	91.9	89.1	75.3	69.0	67.0	67.6	81.2	86.8	80.3	79.4	77.6	99.8	126.3	165.4	133.7	111.1
Restantes Zonas / Other Areas	130.8	150.1	167.4	165.2	138.9	105.4	102.4	139.4	159.1	148.7	106.9	98.7	93.3	104.9	119.1	129.2	120.3	122.0	118.9	128.9	161.9	178.4	163.5	144.3
Total	83.0	80.8	83.3	85.3	85.1	78.7	79.8	85.3	92.3	88.7	82.8	82.9	84.2	88.9	90.4	91.1	87.4	84.7	83.6	90.9	101.7	97.5	94.1	92.6

4. Extracomunitário / Extra-Community

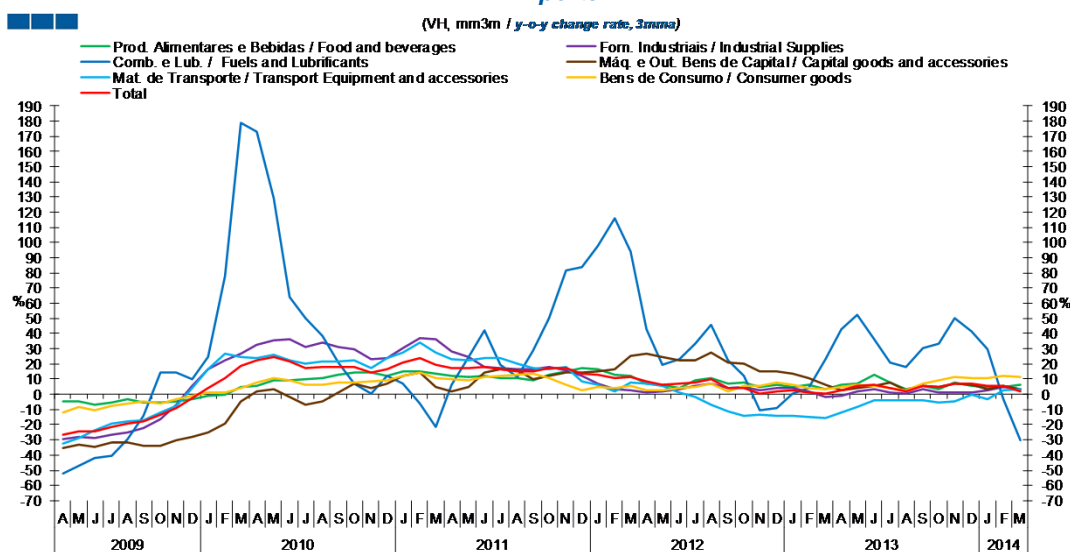
Gráfico / Graph 4.3.
 Saldo
 Balance



	2012			2013			2014																	
	A	M	J	J	A	S	O	N	D	J	F	M												
Exportações / Exports	1.0	1.2	1.0	1.2	1.2	1.0	1.2	1.1	1.0	1.1	1.0	1.2	1.2	1.3	1.1	1.3	1.1	1.2	1.3	1.2	1.1	1.1	1.1	1.1
Importações / Imports	1.2	1.5	1.2	1.3	1.5	1.4	1.3	1.2	1.1	1.3	1.3	1.3	1.4	1.4	1.2	1.4	1.4	1.4	1.5	1.1	0.9	1.4	1.1	1.0
Saldo / Balance	-0.2	-0.3	-0.1	-0.1	-0.3	-0.4	-0.1	-0.1	-0.1	-0.2	-0.3	-0.2	-0.2	-0.1	-0.1	-0.2	-0.3	-0.2	-0.2	0.1	0.2	-0.4	0.0	0.1

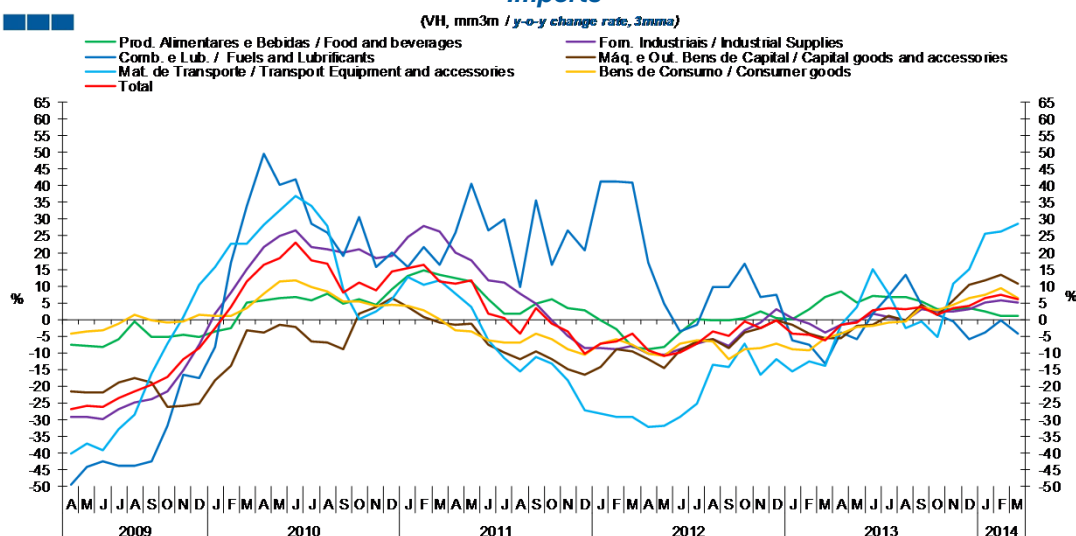
5. Grandes Categorias Económicas / Broad Economic Categories

Gráfico / Graph 5.1.
Exportações
Exports



	2012				2013				2014															
	A	M	J	J	A	S	O	N	D	J	F	M	A	M	J	J	A	S	O	N	D	J	F	M
Produtos Alimentares e Bebidas / Food and Beverages	6.9	6.4	4.2	9.0	10.6	7.1	7.6	4.6	5.9	4.8	6.2	3.5	6.4	7.3	12.8	8.0	3.3	5.2	3.5	7.8	5.4	4.7	5.0	6.2
Comb. e Lub. / Fuels and Lubricants	42.7	19.3	23.2	33.2	45.6	22.4	12.2	-10.5	-8.8	0.8	4.3	23.0	42.6	52.1	36.3	20.7	18.2	30.2	33.5	50.2	41.0	30.0	-3.1	-30.3
Mat. de Transporte / Transport equipment and accessories	6.8	5.2	0.9	-1.5	-7.1	-11.6	-14.3	-13.7	-14.4	-13.9	-14.9	-15.9	-12.3	-8.4	-3.7	-3.6	-4.0	-3.6	-5.7	-4.8	-0.6	-3.2	2.5	3.1
Forn. Industriais / Industrial Supplies	1.5	1.7	3.6	5.3	6.7	3.8	4.7	2.4	4.3	4.3	1.9	-1.4	-1.0	1.6	3.3	1.3	0.1	3.2	0.9	1.4	1.4	2.9	4.5	3.2
Máq. e Out. Bens de Capital / Capital Goods and Accessories	26.8	24.4	22.3	22.6	27.7	21.1	20.3	15.1	15.3	13.3	10.5	6.5	2.8	4.0	5.4	8.1	2.5	5.7	4.7	7.2	6.1	3.3	5.5	3.3
Bens de Consumo / Consumer Goods	2.5	2.8	4.1	4.5	6.7	1.6	5.6	5.3	8.0	6.3	4.1	3.2	5.1	6.6	5.4	3.9	2.3	7.0	9.0	11.1	10.8	10.5	12.5	11.3
Total	8.2	6.6	6.6	7.9	9.6	4.2	4.1	0.6	2.2	2.3	1.0	0.1	2.6	5.3	6.2	4.0	2.2	5.8	4.8	6.7	6.7	5.9	5.2	1.7

Gráfico / Graph 5.2.
Importações
Imports



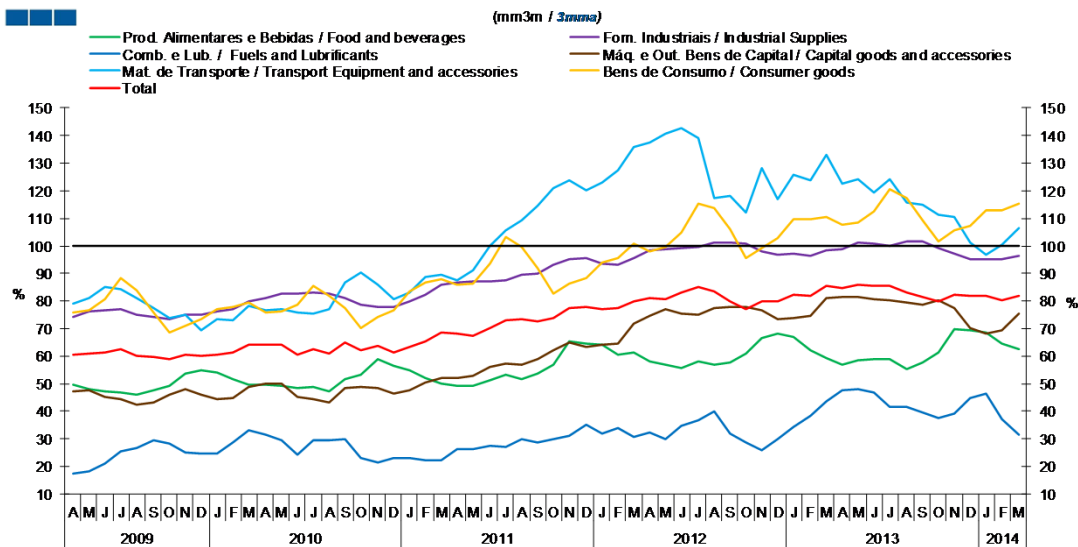
	2012				2013				2014															
	A	M	J	J	A	S	O	N	D	J	F	M	A	M	J	J	A	S	O	N	D	J	F	M
Produtos Alimentares e Bebidas / Food and Beverages	-9.0	-8.1	-4.1	0.0	-0.2	-0.3	0.6	2.3	0.4	0.2	3.1	6.6	8.5	4.9	7.0	6.7	6.8	5.4	2.9	3.0	3.5	2.5	1.2	1.0
Comb. e Lub. / Fuels and Lubricants	17.0	4.8	-3.5	-1.5	9.7	9.9	16.6	6.6	7.4	-6.3	-7.5	-13.3	-3.8	-5.8	1.6	7.0	13.2	4.4	1.6	-0.5	-5.8	-3.9	-0.3	-4.1
Mat. de Transporte / Transport equipment and accessories	-32.0	-31.9	-29.3	-25.1	-13.4	-14.3	-7.3	-16.7	-12.0	-15.7	-12.5	-14.0	-1.7	3.8	15.0	7.8	-2.7	-0.7	-5.3	10.6	15.1	25.6	26.4	28.7
Forn. Industriais / Industrial Supplies	-10.4	-10.4	-8.9	-7.3	-5.9	-7.7	-3.3	-0.8	3.1	0.5	-1.1	-4.0	-1.6	-0.7	1.8	0.7	-0.3	3.0	2.5	2.3	2.9	5.1	5.6	5.2
Máq. e Out. Bens de Capital / Capital Goods and Accessories	-11.8	-14.5	-9.3	-6.5	-6.0	-8.7	-3.8	-2.5	-0.3	-1.5	-4.1	-5.5	-5.6	-1.9	-1.6	1.0	-0.3	4.5	1.3	5.8	10.5	11.7	13.3	10.6
Bens de Consumo / Consumer Goods	-10.1	-10.7	-7.2	-6.2	-6.6	-11.8	-8.8	-8.7	-7.4	-9.0	-9.1	-5.7	-4.3	-2.3	-2.0	-0.8	-0.8	3.8	2.6	4.4	6.3	7.4	9.3	6.4
Total	-9.2	-11.0	-9.8	-7.4	-3.5	-5.0	-0.5	-2.4	-0.4	-4.4	-4.7	-6.2	-1.7	-0.9	2.8	3.2	3.0	3.6	1.4	3.5	4.2	6.3	7.5	6.0

Nota: Não inclui Bens N.E. Noutra Categoria devido ao seu reduzido valor relativo e elevada variabilidade.

Note: Does not include Goods Not Elsewhere Specified because of its small relative value and high variability

5. Grandes Categorias Económicas / Broad Economic Categories

Gráfico / Graph 5.3.
Taxa de Cobertura
Coverage Rate

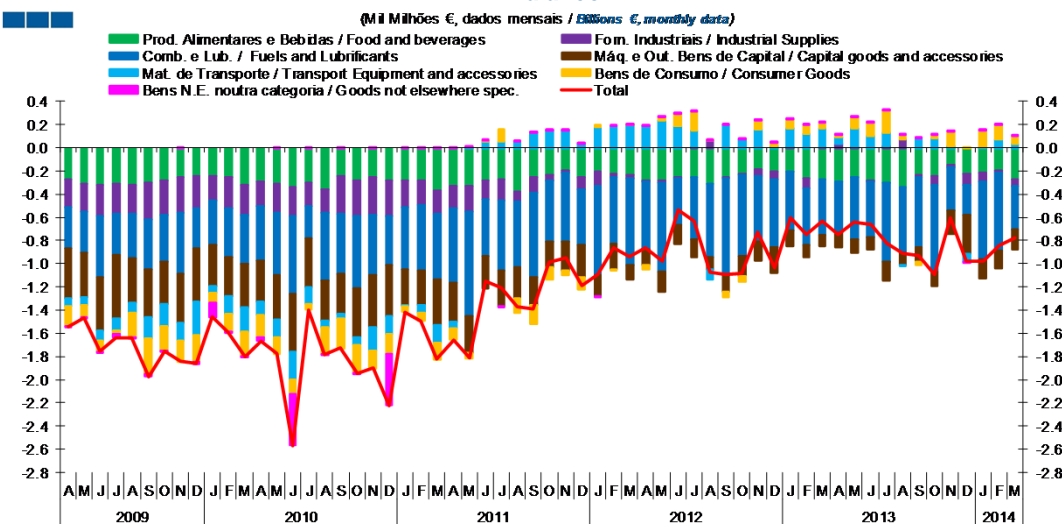


	2012		2010		2011		2013		2012		2013		2014	
	A	M	J	J	A	S	O	N	D	J	F	M	A	M
Produtos Alimentares e Bebidas / Food and Beverages	57.9	57.0	55.8	58.1	57.1	57.8	60.9	66.7	68.2	67.2	62.2	59.4	56.8	58.3
Comb. e Lub. / Fuels and Lubricants	32.2	29.9	34.9	36.8	39.9	31.8	28.7	26.0	29.8	34.4	38.3	43.6	47.8	48.2
Mat. de Transporte / Transport equipment and accessories	137.4	140.7	142.6	138.9	117.4	118.2	111.9	128.4	117.0	125.8	123.7	133.1	122.7	124.1
Forn. Industriais / Industrial Supplies	98.3	98.8	99.2	99.5	101.4	101.4	100.8	98.1	96.7	97.2	96.2	98.2	98.9	101.2
Máq. e Out. Bens de Capital / Capital Goods and Accessories	74.6	77.0	75.4	75.0	77.4	77.9	77.6	76.5	73.3	73.8	74.6	81.0	81.3	81.6
Bens de Consumo / Consumer Goods	97.9	99.6	104.8	115.2	113.8	105.9	95.7	99.4	103.0	109.7	109.6	110.4	107.5	108.6
Total	81.1	80.8	82.9	84.9	83.5	79.7	77.1	79.9	79.8	82.4	81.9	85.4	84.7	85.9

Nota: Não inclui Bens N.E. Outra Categoria devido ao seu reduzido valor relativo e elevada variabilidade.

Note: Does not include Goods Not Elsewhere Specified because of its small relative value and high variability

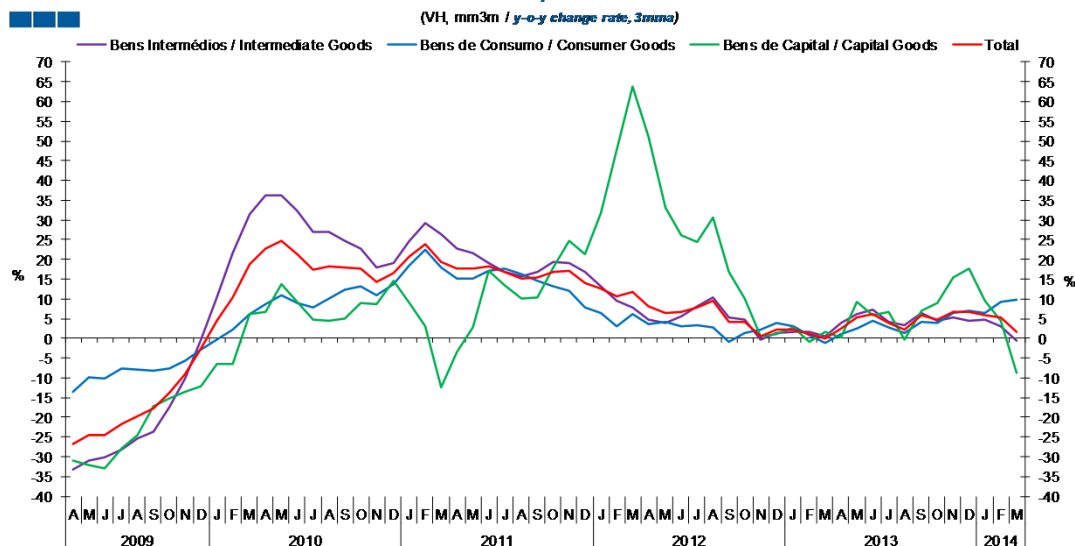
Gráfico / Graph 5.4.
Saldo
Balance



	2012		2010		2011		2013		2012		2013		2014	
	A	M	J	J	A	S	O	N	D	J	F	M	A	M
Produtos Alimentares e Bebidas / Food and Beverages	-0.3	-0.3	-0.3	-0.3	-0.3	-0.3	-0.2	-0.2	-0.2	-0.2	-0.3	-0.3	-0.3	-0.3
Comb. e Lub. / Fuels and Lubricants	-0.6	-0.8	-0.4	-0.5	-0.6	-0.8	-0.7	-0.6	-0.6	-0.5	-0.5	-0.5	-0.4	-0.5
Mat. de Transporte / Transport equipment and accessories	0.2	0.2	0.2	0.1	-0.1	0.2	0.1	0.2	0.0	0.2	0.1	0.2	0.1	0.1
Forn. Industriais / Industrial Supplies	0.0	0.0	0.0	0.0	0.1	0.0	0.0	-0.1	-0.1	0.0	0.0	0.0	0.0	0.0
Máq. e Out. Bens de Capital / Capital Goods and Accessories	-0.1	-0.2	-0.2	-0.1	-0.1	-0.2	-0.2	-0.2	-0.1	-0.1	-0.1	-0.1	-0.1	-0.1
Bens de Consumo / Consumer Goods	0.0	0.0	0.1	0.2	0.0	0.0	0.0	0.1	0.0	0.1	0.1	0.0	0.1	0.1
Bens N.E. noutra categoria / Goods not elsewhere spec.	0.0	0.0	0.0	0.0	0.0	0.0	0.0	0.0	0.0	0.0	0.0	0.0	0.0	0.0
Total	-0.9	-1.0	-0.5	-0.6	-1.1	-1.1	-1.1	-0.7	-1.0	-0.6	-0.7	-0.6	-0.7	-0.8

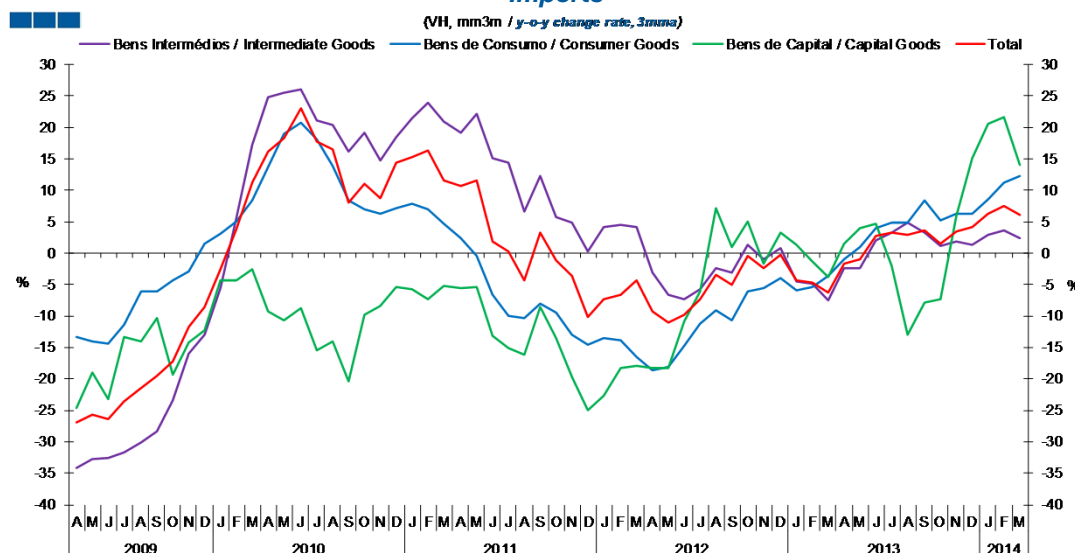
6. Classes Básicas de Bens do Sistema Europeu de Contas Nacionais / Basic Classes of Goods in the European System of Accounts

Gráfico / Graph 6.1.
Exportações
Exports



	2012			2013			2014																	
	A	M	J	J	A	S	O	N	D	J	F	M	A	M	J	J	A	S	O	N	D	J	F	M
Bens Intermediários / Intermediate Goods	4.7	3.9	5.5	8.0	10.5	5.4	4.6	-0.4	1.3	1.7	1.5	0.5	3.8	6.1	7.2	4.1	3.2	6.6	4.5	5.3	4.5	4.7	3.0	-0.7
Bens de Consumo / Consumer Goods	3.7	4.1	3.1	3.3	2.8	-1.0	1.4	2.3	3.9	3.0	0.8	-1.2	1.1	2.4	4.6	2.8	1.4	4.1	3.9	6.4	6.9	6.4	9.3	9.7
Bens de Capital / Capital Goods	51.0	33.1	26.0	24.4	30.7	16.9	10.1	0.5	1.1	2.8	-0.8	1.5	0.4	9.3	5.8	6.6	-0.3	6.9	9.1	15.5	17.6	9.5	4.4	-8.9
Total	8.2	6.6	6.6	7.9	9.6	4.2	4.1	0.6	2.2	2.3	1.0	0.1	2.6	5.3	6.2	4.0	2.2	5.8	4.8	6.7	6.7	5.9	5.2	1.7

Gráfico / Graph 6.2.
Importações
Imports



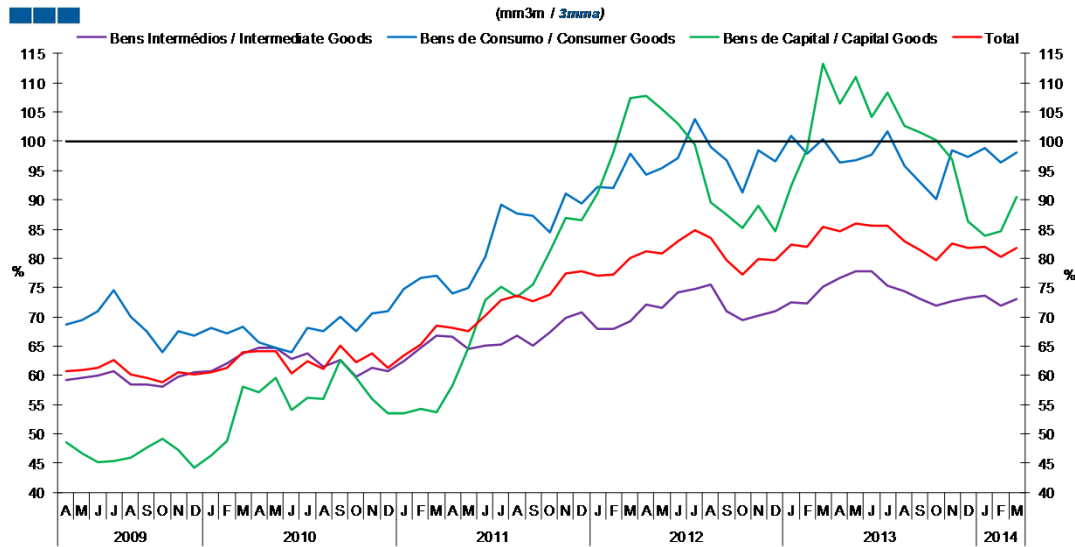
	2012			2013			2014																	
	A	M	J	J	A	S	O	N	D	J	F	M	A	M	J	J	A	S	O	N	D	J	F	M
Bens Intermediários / Intermediate Goods	-3.1	-6.6	-7.4	-5.8	-2.4	-3.2	1.4	-1.1	0.8	-4.6	-4.8	-7.5	-2.5	-2.4	2.1	3.3	4.8	3.3	1.1	1.8	1.4	2.9	3.7	2.3
Bens de Consumo / Consumer Goods	-18.7	-18.2	-14.8	-11.2	-9.1	-10.7	-6.1	-5.5	-3.9	-5.9	-5.5	-3.7	-1.0	1.0	4.1	4.9	4.8	8.4	5.2	6.3	6.2	8.6	11.3	12.2
Bens de Capital / Capital Goods	-18.3	-18.3	-10.9	-6.1	7.2	1.0	5.0	-1.7	3.3	1.3	-1.4	-3.8	1.6	3.9	4.7	-2.1	-13.0	-7.9	-7.2	5.9	15.1	20.6	21.6	14.1
Total	-9.2	-11.0	-9.8	-7.4	-3.5	-5.0	-0.5	-2.4	-0.4	-4.4	-4.7	-6.2	-1.7	-0.9	2.8	3.2	3.0	3.6	1.4	3.5	4.2	6.3	7.5	6.0

Nota: Não inclui a série Outros Bens devido ao seu baixo valor relativo e elevada variabilidade.

Note: Does not include Other Goods because of its small relative value and high variability.

6. Classes Básicas de Bens do Sistema Europeu de Contas Nacionais / Basic Classes of Goods in the European System of Accounts

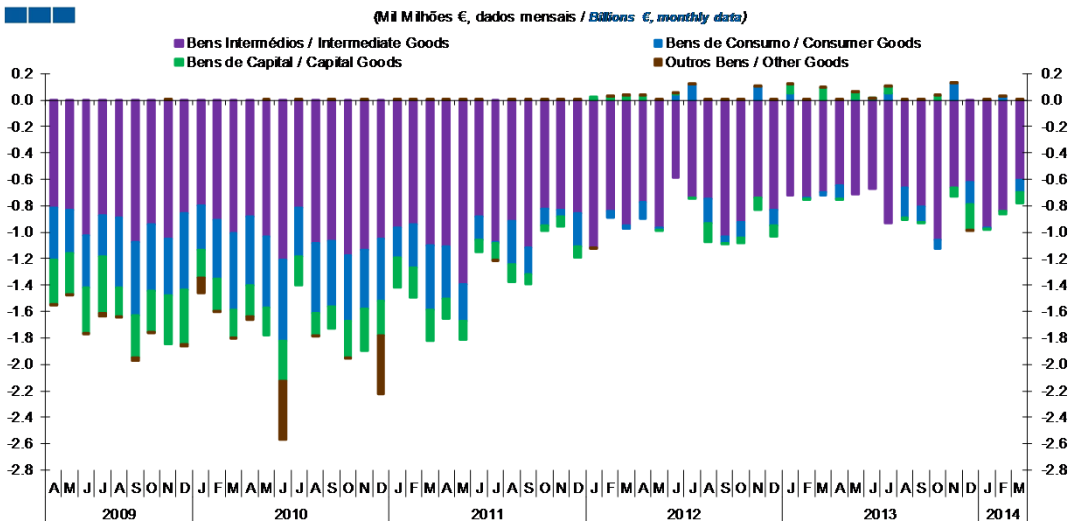
Gráfico / Graph 6.3.
 Taxa de Cobertura
 Coverage Rate



	2012			2013												2014								
	A	M	J	J	A	S	O	N	D	J	F	M	A	M	J	J	A	S	O	N	D	J	F	M
Bens Intermediários / Intermediate Goods	72.0	71.6	74.1	74.8	75.5	70.9	69.5	70.2	71.0	72.4	72.4	75.2	76.7	77.8	77.8	75.4	74.3	73.1	71.8	72.6	73.2	73.7	71.8	73.0
Bens de Consumo / Consumer Goods	94.4	95.4	97.2	103.7	99.0	96.8	91.2	98.5	96.7	100.9	98.0	100.4	96.3	96.8	97.7	101.7	95.8	92.9	90.0	98.6	97.3	98.8	96.3	98.2
Bens de Capital / Capital Goods	107.7	105.5	103.1	99.5	89.6	87.4	85.2	88.9	84.6	92.4	98.7	113.3	106.5	110.9	104.1	108.4	102.6	101.5	100.2	97.0	86.4	83.8	84.7	90.5
Total	81.1	80.8	82.9	84.9	83.5	79.7	77.1	79.9	79.8	82.4	81.9	85.4	84.7	85.9	85.7	85.5	82.9	81.4	79.7	82.5	81.7	82.0	80.2	81.9

Nota: Não inclui a série Outros Bens devido ao seu baixo valor relativo e elevada variabilidade.
 Note: Does not include Other Goods because of its small relative value and high variability.

Gráfico / Graph 6.4.
 Saldo de Bens
 Balance of Goods



	2012			2013												2014								
	A	M	J	J	A	S	O	N	D	J	F	M	A	M	J	J	A	S	O	N	D	J	F	M
Bens Intermediários / Intermediate Goods	-0.8	-1.0	-0.6	-0.7	-0.7	-1.0	-0.9	-0.7	-0.8	-0.7	-0.7	-0.7	-0.6	-0.7	-0.7	-0.9	-0.7	-0.8	-1.1	-0.7	-0.6	-1.0	-0.8	-0.6
Bens de Consumo / Consumer Goods	-0.1	0.0	0.0	0.1	-0.2	0.0	-0.1	0.1	-0.1	0.1	0.0	0.0	-0.1	0.0	0.0	0.1	-0.2	-0.1	-0.1	0.1	-0.2	0.0	0.0	-0.1
Bens de Capital / Capital Goods	0.0	0.0	0.0	0.0	-0.1	0.0	0.0	-0.1	-0.1	0.1	0.0	0.1	0.0	0.1	0.0	0.0	0.0	0.0	0.0	-0.1	-0.2	0.0	0.0	-0.1
Outros Bens / Other Goods	0.0	0.0	0.0	0.0	0.0	0.0	0.0	0.0	0.0	0.0	0.0	0.0	0.0	0.0	0.0	0.0	0.0	0.0	0.0	0.0	0.0	0.0	0.0	0.0
Total	-0.9	-1.0	-0.5	-0.6	-1.1	-1.1	-1.1	-0.7	-1.0	-0.6	-0.7	-0.6	-0.7	-0.6	-0.7	-0.8	-0.9	-0.9	-1.1	-0.6	-1.0	-0.8	-0.8	-0.8

6. Classes Básicas de Bens do Sistema Europeu de Contas Nacionais / Basic Classes of Goods in the European System of Accounts

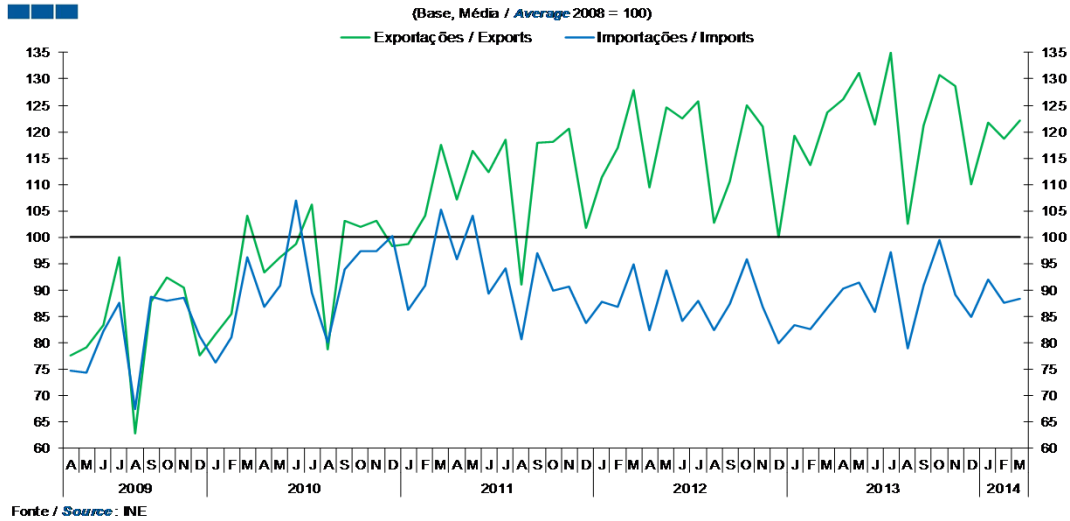
Tabela / Table 1.1.
Estrutura do Saldo
Balance Structure

Milhões de euros \ Millions of euros

		2013						2014						2014											
		A		M		J		J		A		S		O		N		D		J		F		M	
		M€	%	M€	%	M€	%	M€	%	M€	%	M€	%	M€	%	M€	%	M€	%	M€	%	M€	%	M€	%
Bens Intermedios / Intermediate Goods	Prod. alim. e bebidas / <i>Foods and beverages</i>	-146	19	-104	16	-146	22	-154	19	-142	16	-140	15	-158	14	-140	23	-119	12	-107	11	-101	12	-147	19
	Forn. industriais NE noutra categoria / <i>Industrial supplies NE specified</i>	34	-5	6	-1	-12	2	11	-1	70	-8	-19	2	-81	7	-17	3	-97	10	-80	8	-19	2	-54	7
	Comb. e lubrificantes / <i>Fuel and lubricants</i>	-533	71	-603	94	-511	77	-742	90	-618	68	-651	70	-801	74	-457	76	-324	33	-743	76	-697	83	-367	47
	Máquinas, outros bens de capital (Partes e acessórios) / <i>Capital goods and parts and accessories</i>	-65	9	-66	10	-36	5	-66	8	-36	4	-50	5	-78	7	-64	11	-93	10	-75	8	-59	7	-57	7
	Material de transportes (Partes e acessórios) / <i>Transport equipment (Parts and accessories)</i>	66	-9	58	-9	33	-5	23	-3	65	-7	52	-6	64	-6	12	-2	10	-1	39	-4	41	-5	25	-3
Total		-644	86	-709	110	-672	102	-928	113	-662	73	-807	87	-1,053	97	-666	111	-623	63	-965	99	-835	99	-600	77
Bens de Consumo / Consumption Goods	Prod. alim. e bebidas destinados ao consumo dos particulares / <i>Food and beverages mainly for household consumption</i>	-142	19	-147	23	-133	20	-152	19	-195	21	-93	10	-82	8	-12	2	-104	11	-108	11	-98	12	-130	17
	Material de transporte / <i>Transport equipment</i>	21	-3	57	-9	22	-3	22	-3	-71	8	8	-1	-17	2	10	-2	-66	7	-32	3	-2	0	-25	3
	Bens de consumo NE noutra categoria / <i>Consumption goods NE specified</i>	21	-3	96	-15	117	-18	186	-23	36	-4	-31	3	29	-3	127	-21	3	0	135	-14	124	-15	61	-8
Total		-100	13	6	-1	6	-1	56	-7	-230	25	-117	13	-70	6	125	-21	-167	17	-5	0	24	-3	-94	12
Bens de Capital / Capital Goods	Carburantes para motor / <i>Motor spirit</i>	87	-12	68	-11	36	-5	64	-8	48	-5	48	-5	55	-5	86	-14	63	-6	70	-7	28	-3	-6	1
	Máquinas, outros bens de capital (exceto material de transporte) / <i>Capital goods (except transport equipment)</i>	-63	8	-56	9	-75	11	-94	11	-70	8	-81	9	-52	5	-141	23	-237	24	-81	8	-90	11	-116	15
	Material de transportes destinado à indústria / <i>Transport equipment, industrial</i>	-31	4	46	-7	42	-6	77	-9	4	0	22	-2	30	-3	-9	2	-18	2	2	0	29	-3	36	-5
Total		-6	1	58	-9	3	0	48	-6	-18	2	-11	1	32	-3	-64	11	-191	19	-9	1	-33	4	-86	11
Outros / Others		3	0	2	0	1	0	2	0	2	0	3	0	2	0	3	0	0	0	2	0	1	0	1	0
Total		-747	100	-643	100	-662	100	-823	100	-908	100	-932	100	-1,090	100	-602	100	-982	100	-978	100	-843	100	-780	100

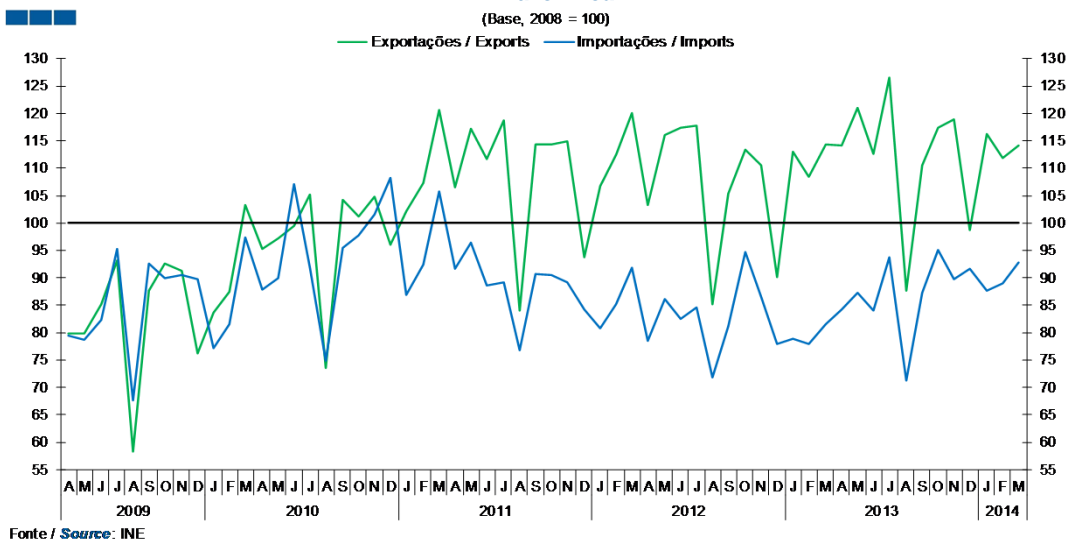
7. Índice GEE de Comércio Internacional de Bens / *GEE Index of International Trade of Goods*

Gráfico / Graph 7.1.
 Total



	2012												2013												2014		
	A	M	J	J	A	S	O	N	D	J	F	M	A	M	J	J	A	S	O	N	D	J	F	M			
Exportações / Exports	109.4	124.6	122.6	125.7	102.8	110.6	125.1	121.0	100.1	119.3	113.6	123.6	126.2	131.1	121.4	135.1	102.5	121.2	130.9	128.6	110.0	121.8	118.6	122.1			
Importações / Imports	82.4	93.7	84.1	87.9	82.3	87.4	95.8	86.8	79.9	83.4	82.7	86.7	90.3	91.4	85.8	97.1	79.0	90.8	99.6	89.1	84.9	92.0	87.5	88.4			

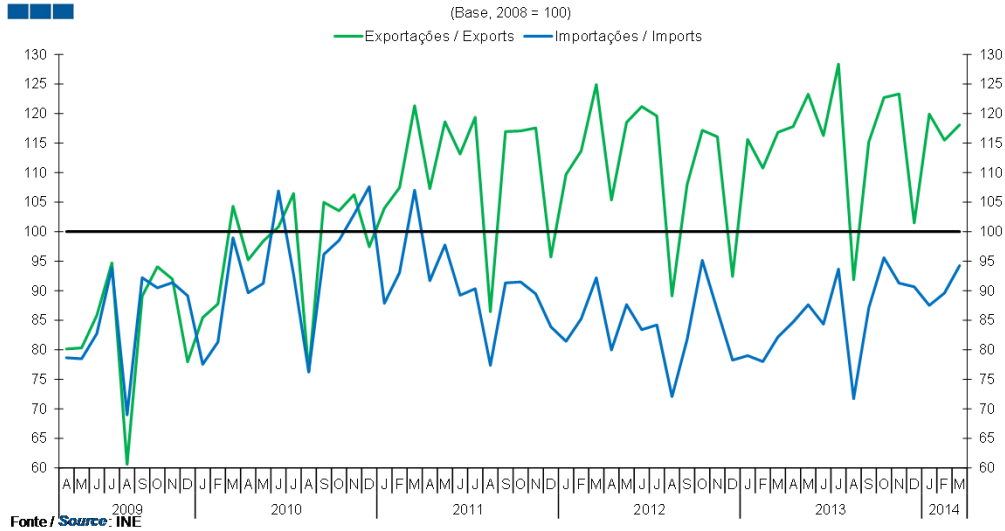
Gráfico / Graph 7.2.
 Zona Euro
 Euro Area



	2012												2013												2014		
	A	M	J	J	A	S	O	N	D	J	F	M	A	M	J	J	A	S	O	N	D	J	F	M			
Exportações / Exports	103.3	116.0	117.4	117.9	85.2	105.4	113.4	110.6	90.0	113.1	108.5	114.3	114.2	121.0	112.6	126.6	87.6	110.6	117.5	119.0	98.7	116.2	111.8	114.1			
Importações / Imports	78.5	86.2	82.5	84.6	71.8	81.2	94.6	86.5	77.8	78.9	77.9	81.6	84.3	87.4	84.0	93.8	71.3	87.2	95.1	89.8	91.6	87.6	89.0	92.9			

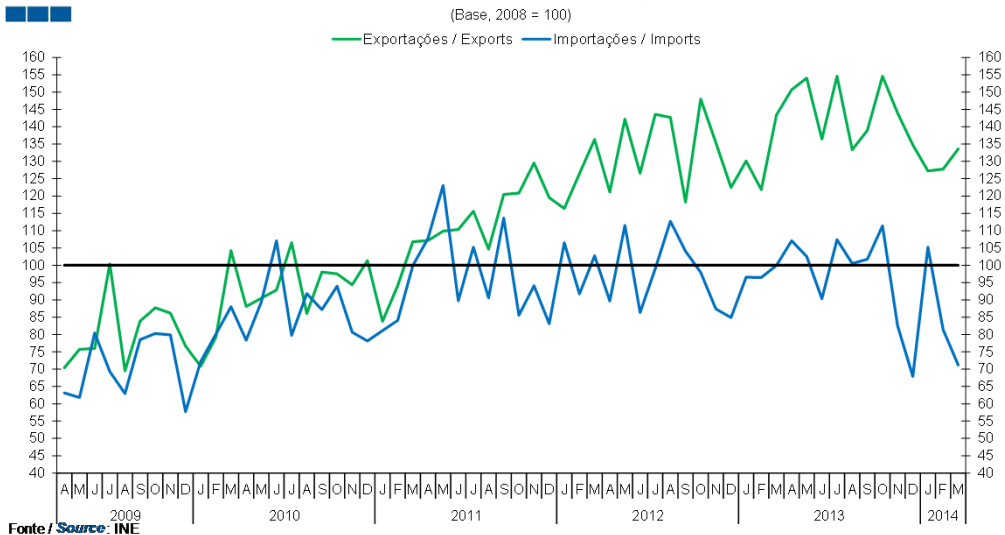
7. Índice GEE de Comércio Internacional de Bens / *GEE Index of International Trade of Goods*

Gráfico / Graph 7.3.
Intracomunitário
Intra-Community



	2012			2013			2014																	
	A	M	J	J	A	S	O	N	D	J	F	M	A	M	J	J	A	S	O	N	D	J	F	M
Exportações / Exports	105.4	118.5	121.2	119.6	89.1	108.0	117.2	116.0	92.4	115.6	110.8	116.8	117.8	123.3	116.3	128.3	91.9	115.2	122.7	123.3	101.5	119.9	115.5	118.1
Importações / Imports	80.0	87.6	83.4	84.2	72.1	81.7	95.1	86.7	78.2	79.0	78.0	82.2	84.7	87.6	84.3	93.7	71.7	87.1	95.6	91.3	90.7	87.5	89.6	94.3

Gráfico / Graph 7.4.
Extracomunitário
Extra-Community



	2012			2013			2014																	
	A	M	J	J	A	S	O	N	D	J	F	M	A	M	J	J	A	S	O	N	D	J	F	M
Exportações / Exports	121.2	142.2	126.6	143.6	142.7	118.2	148.0	135.5	122.5	130.1	121.8	143.4	150.7	154.1	136.5	154.6	133.4	138.9	154.6	144.0	134.8	127.3	127.8	133.6
Importações / Imports	89.7	111.5	86.4	99.0	112.7	104.1	97.9	87.4	84.9	96.5	96.5	100.0	107.1	102.5	90.3	107.4	100.5	101.8	111.4	82.5	67.9	105.2	81.4	71.2