

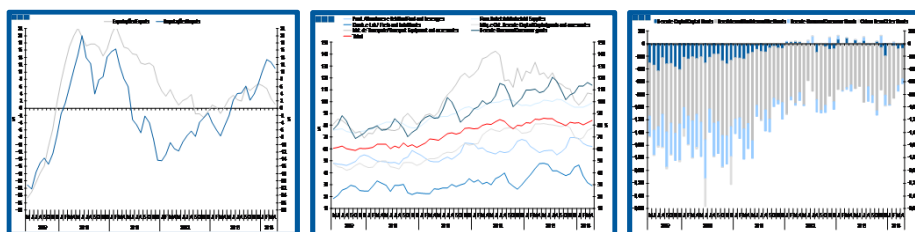
Estatísticas Temáticas de Conjuntura

Short-term Thematic Statistics

- Nº 6/2014 -

12 de junho de 2014

June, 12, 2014



Comércio Internacional de Bens

International Trade of Goods

- Abril de 2014 -

- April, 2014 -

Fonte: Instituto Nacional de Estatística

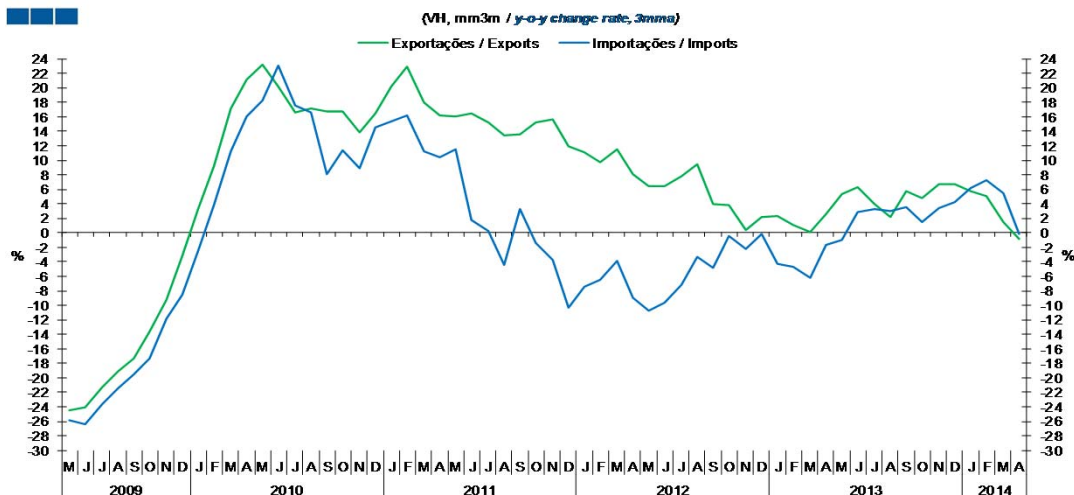
Source: Statistics Portugal

Índice / *Index*

	Página / <i>Page</i>
1. Total	
Importações e Exportações / <i>Imports and Exports</i>	3
Taxa de Cobertura / <i>Coverage Rate</i>	3
Saldo / <i>Balance</i>	4
2. Zona Euro-17 / <i>Euro Area-17</i>	
Importações e Exportações / <i>Imports and Exports</i>	5
Taxa de Cobertura / <i>Coverage Rate</i>	5
Saldo / <i>Balance</i>	6
3. Intracomunitário / <i>Intra-Community</i>	
Importações e Exportações / <i>Imports and Exports</i>	7
Taxa de Cobertura / <i>Coverage Rate</i>	7
Saldo / <i>Balance</i>	8
4. Extracomunitário / <i>Extra-Community</i>	
Importações e Exportações / <i>Imports and Exports</i>	9
Taxa de Cobertura / <i>Coverage Rate</i>	9
Saldo / <i>Balance</i>	10
5. Grandes Categorias Económicas / <i>Broad Economic Categories</i>	
Exportações / <i>Exports</i>	11
Importações / <i>Imports</i>	11
Taxa de Cobertura / <i>Coverage Rate</i>	12
Saldo / <i>Balance</i>	12
6. Classes Básicas de Bens do Sistema Europeu de Contas Nacionais / <i>Basic Classes of Goods in the European System of Accounts</i>	
Exportações / <i>Exports</i>	13
Importações / <i>Imports</i>	13
Taxa de Cobertura / <i>Coverage Rate</i>	14
Saldo / <i>Balance</i>	14
Estrutura do Saldo / <i>Balance Structure</i>	15
7. Índice GEE de Comércio Internacional de Bens / <i>GEE Index of International Trade of Goods</i>	
Total / <i>Total</i>	16
Zona Euro / <i>Euro Area</i>	16
Intracomunitário / <i>Intra-Community</i>	17
Extracomunitário / <i>Extra-Community</i>	17

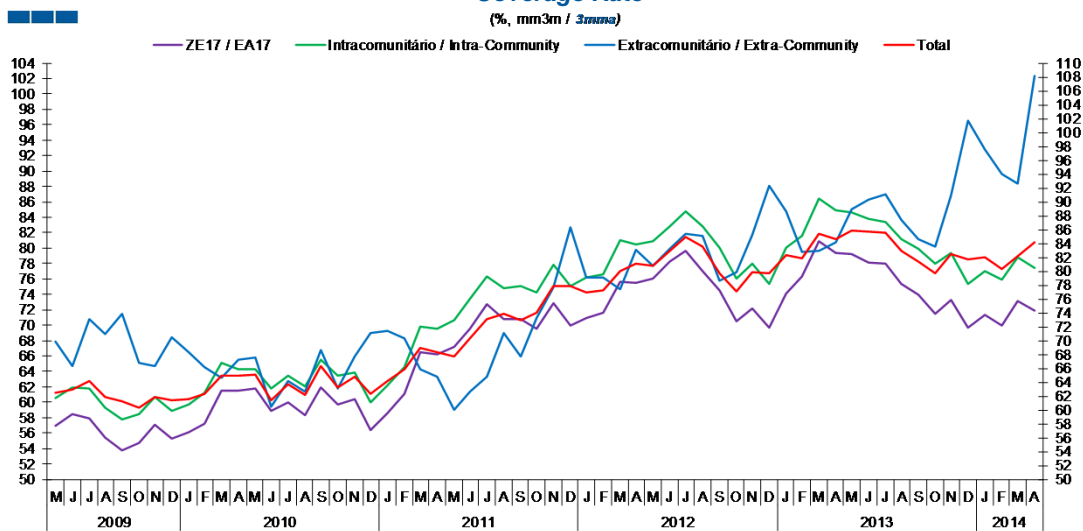
1. Total

Gráfico / Graph 1.1.
 Importações e Exportações
 Imports and Exports



	2012												2013												2014			
	M	J	J	A	S	O	N	D	J	F	M	A	M	J	J	A	S	O	N	D	J	F	M	A				
Exportações / Exports	6.4	6.5	7.7	9.4	3.9	3.9	0.4	2.2	2.4	1.1	0.1	2.6	5.3	6.2	4.0	2.2	5.8	4.7	6.7	6.7	5.8	5.0	1.5	-0.8				
Importações / Imports	-10.8	-9.6	-7.2	-3.3	-4.9	-0.4	-2.3	-0.2	-4.3	-4.7	-6.2	-1.7	-0.9	2.8	3.2	3.0	3.6	1.4	3.5	4.2	6.2	7.2	5.5	-0.1				

Gráfico / Graph 1.2.
 Taxa de Cobertura
 Coverage Rate

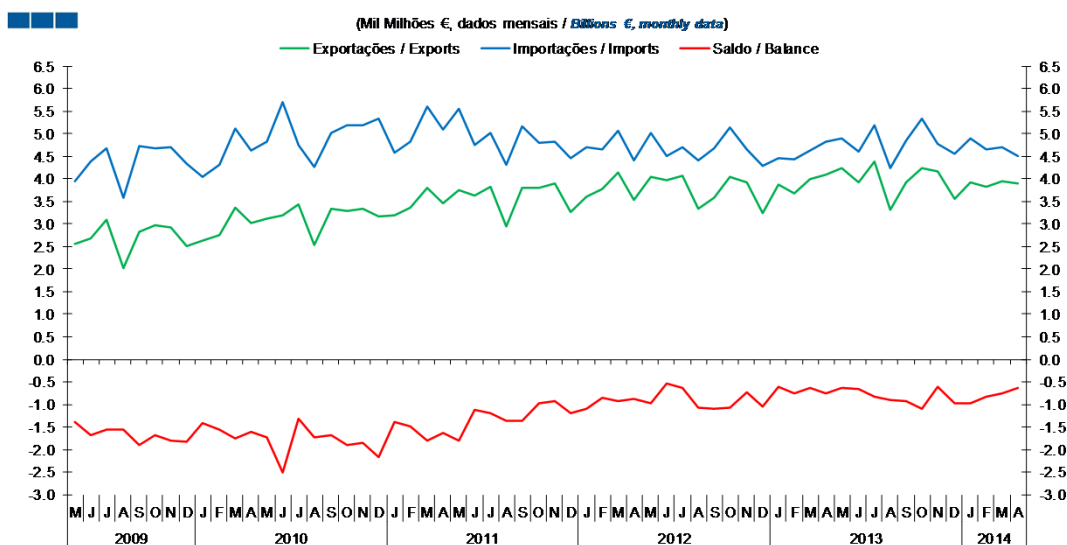


Fonte / Source: INE

	2012												2013												2014			
	M	J	J	A	S	O	N	D	J	F	M	A	M	J	J	A	S	O	N	D	J	F	M	A				
ZE 17 / EA 17	76.0	78.2	79.6	77.0	74.6	70.5	72.1	69.6	74.1	76.3	80.9	79.4	79.3	78.2	78.0	75.4	73.9	71.5	73.3	69.6	71.3	70.0	73.2	71.9				
Intracomunitário / Intra-community	80.8	82.8	84.7	82.9	80.1	76.0	78.0	75.4	80.0	81.6	86.4	84.9	84.7	83.8	83.4	81.1	80.0	78.0	79.4	75.4	77.1	75.9	78.8	77.4				
Extracomunitário / Extra-community	80.8	83.3	85.3	85.1	78.7	79.8	85.3	92.3	88.7	82.8	82.9	84.2	88.9	90.4	91.1	87.4	84.7	83.6	90.9	101.7	97.5	94.0	92.6	108.2				
Total	80.8	82.9	84.9	83.5	79.7	77.1	79.9	79.8	82.3	81.9	85.4	84.7	85.9	85.7	85.5	82.9	81.4	79.7	82.4	81.7	82.0	80.3	82.1	84.1				

1. Total

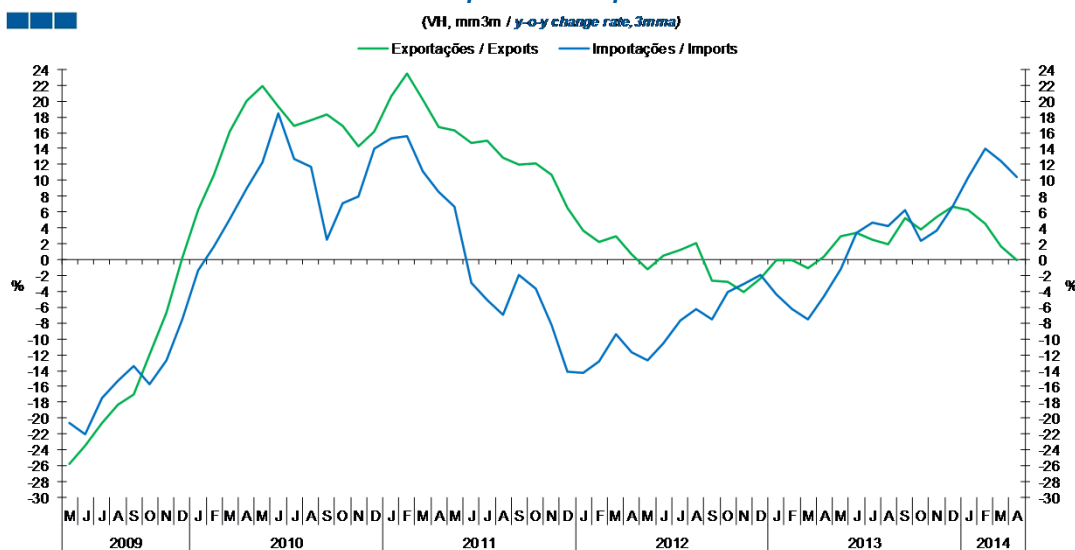
Gráfico / Graph 1.3.
 Saldo
 Balance



	2012												2013												2014			
	M	J	J	A	S	O	N	D	J	F	M	A	M	J	J	A	S	O	N	D	J	F	M	A				
Exportações / Exports	4.0	4.0	4.1	3.3	3.6	4.0	3.9	3.2	3.9	3.7	4.0	4.1	4.2	3.9	4.4	3.3	3.9	4.2	4.2	3.6	3.9	3.8	4.0	3.9				
Importações / Imports	5.0	4.5	4.7	4.4	4.7	5.1	4.6	4.3	4.5	4.4	4.6	4.8	4.9	4.6	5.2	4.2	4.9	5.3	4.8	4.5	4.9	4.7	4.7	4.5				
Saldo / Balance	-1.0	-0.5	-0.6	-1.1	-1.1	-1.1	-0.7	-1.0	-0.6	-0.7	-0.6	-0.7	-0.6	-0.7	-0.8	-0.9	-0.9	-1.1	-0.6	-1.0	-1.0	-0.8	-0.7	-0.6				

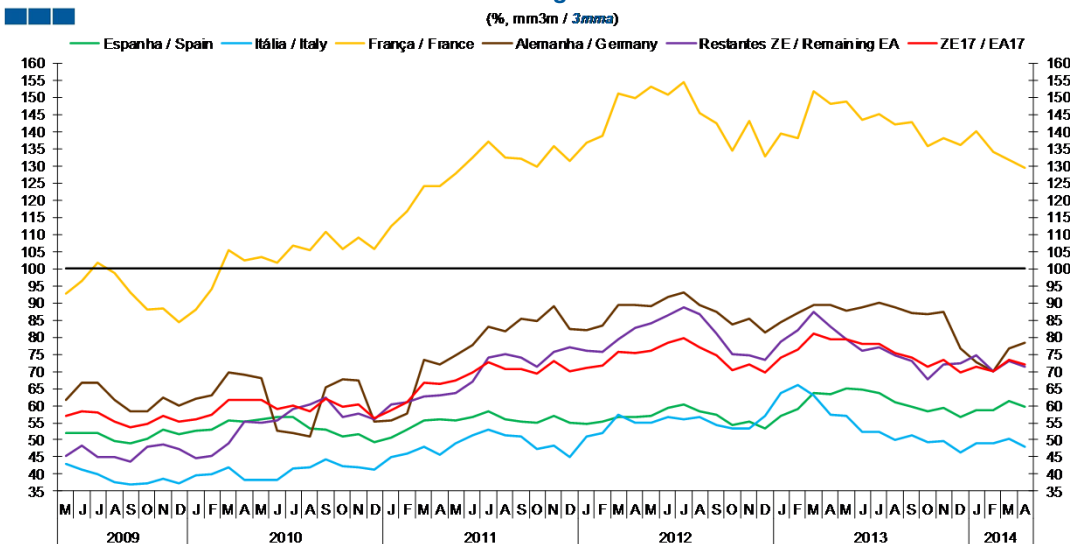
2. Zona Euro-17 / Euro Area-17

Gráfico / Graph 2.1.
 Importações e Exportações
 Imports and Exports



	2012				2013				2014															
	M	J	J	A	S	O	N	D	J	F	M	A	M	J	J	A	S	O	N	D	J	F	M	A
Exportações / Exports	-1.3	0.6	1.2	2.1	-2.6	-2.7	-4.1	-2.4	-0.1	-0.1	-1.0	0.3	2.9	3.3	2.6	2.0	5.3	3.8	5.4	6.7	6.3	4.6	1.7	0.0
Importações / Imports	-12.6	-10.6	-7.6	-6.2	-7.6	-4.1	-3.1	-1.9	-4.3	-6.2	-7.5	-4.6	-1.3	3.4	4.6	4.2	6.2	2.4	3.7	6.7	10.4	14.0	12.4	10.5

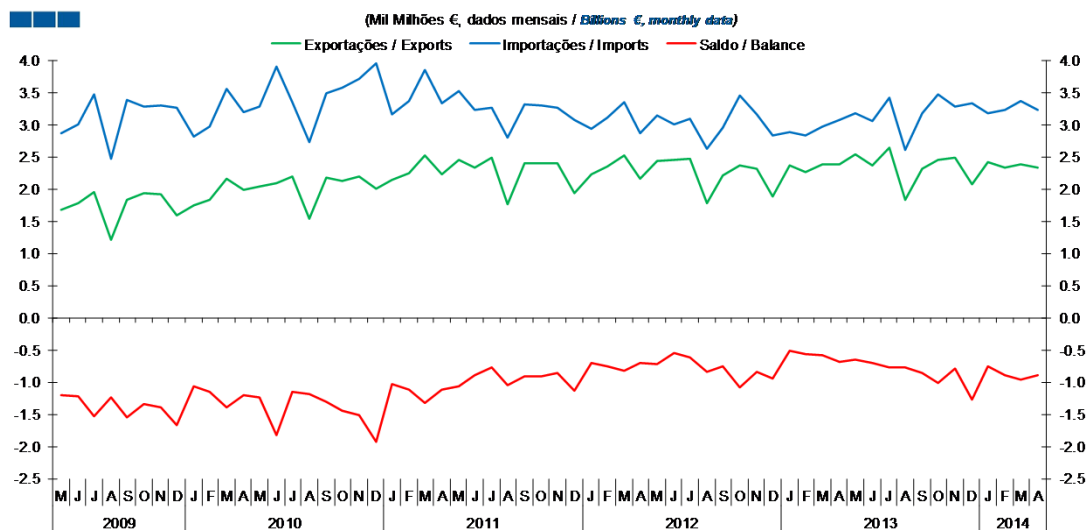
Gráfico / Graph 2.2.
 Taxa de Cobertura
 Coverage Rate



	2012				2013				2014															
	M	J	J	A	S	O	N	D	J	F	M	A	M	J	J	A	S	O	N	D	J	F	M	A
Espanha / Spain	57.0	59.4	60.4	58.5	57.3	54.5	55.4	53.4	57.0	59.0	63.6	63.4	64.9	64.8	63.8	61.1	59.6	58.3	59.3	56.5	58.8	58.8	61.4	59.8
Itália / Italy	55.1	56.6	55.9	56.6	54.2	53.3	53.2	57.1	63.6	65.9	63.0	57.5	57.0	52.4	52.4	50.0	51.4	49.2	49.6	46.5	49.1	48.9	50.3	48.0
França / France	153.3	150.8	154.6	145.4	142.5	134.5	143.1	132.7	139.5	138.2	151.9	148.2	148.7	143.5	145.1	142.2	142.7	135.8	138.0	136.2	139.9	134.0	131.7	129.5
Alemanha / Germany	89.0	91.8	92.9	89.5	87.5	83.5	85.4	81.2	84.3	87.0	89.5	89.5	87.6	88.8	90.0	88.8	86.9	86.6	87.3	76.8	72.5	70.1	76.8	78.2
Restantes ZE / Remaining EA	84.1	86.2	88.7	86.6	81.0	74.9	74.7	73.5	78.6	82.1	87.2	83.1	79.4	76.0	77.0	74.6	72.9	67.7	72.0	72.5	74.7	70.1	72.9	71.3
ZE 17 / EA 17	76.0	78.2	79.6	77.0	74.6	70.5	72.1	69.6	74.1	76.3	80.9	79.4	79.3	78.2	78.0	75.4	73.9	71.5	73.3	69.6	71.3	70.0	73.2	71.9

2. Zona Euro-17 / Euro Area-17

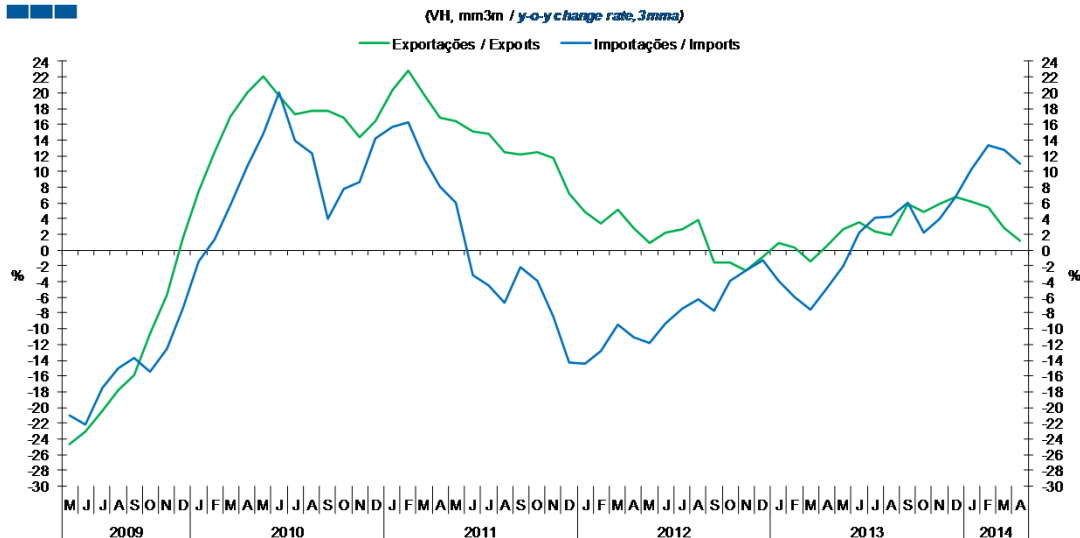
Gráfico / Graph 2.3.
 Saldo
 Balance



	2012				2013												2014							
	M	J	J	A	S	O	N	D	J	F	M	A	M	J	J	A	S	O	N	D	J	F	M	A
Exportações / Exports	2.4	2.5	2.5	1.8	2.2	2.4	2.3	1.9	2.4	2.3	2.4	2.4	2.5	2.4	2.6	1.8	2.3	2.5	2.5	2.1	2.4	2.3	2.4	2.3
Importações / Imports	3.1	3.0	3.1	2.6	3.0	3.4	3.2	2.8	2.9	2.8	3.0	3.1	3.2	3.1	3.4	2.6	3.2	3.5	3.3	3.3	3.2	3.2	3.4	3.2
Saldo / Balance	-0.7	-0.6	-0.6	-0.8	-0.8	-1.1	-0.8	-1.0	-0.5	-0.6	-0.6	-0.7	-0.7	-0.7	-0.8	-0.8	-0.9	-1.0	-0.8	-1.3	-0.8	-0.9	-1.0	-0.9

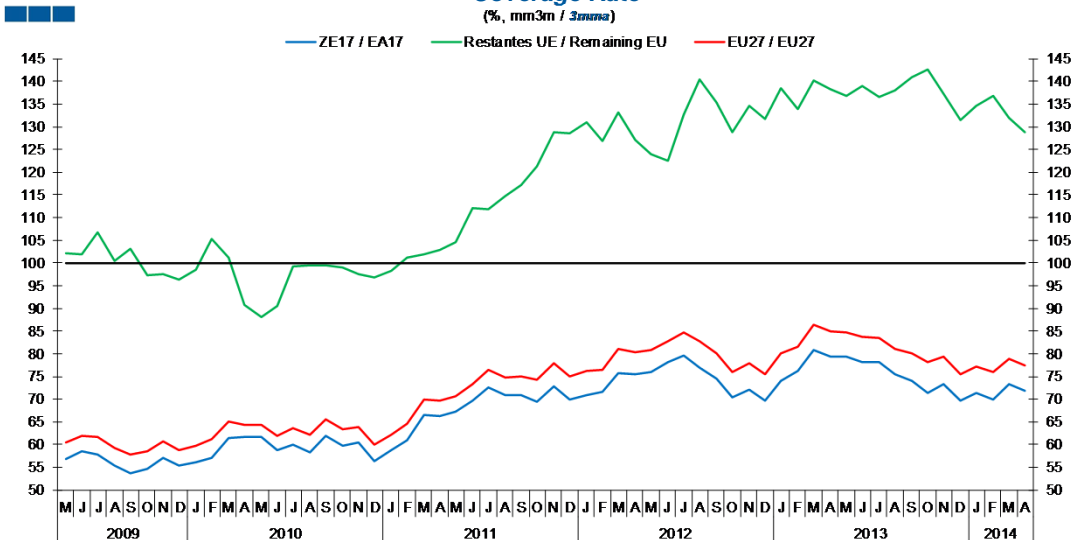
3. Intracomunitário / Intra-Community

Gráfico / Graph 3.1.
 Importações e Exportações
 Imports and Exports



	2012				2013				2014															
	M	J	J	A	S	O	N	D	J	F	M	A	M	J	J	A	S	O	N	D	J	F	M	A
Exportações / Exports	0.9	2.2	2.7	3.8	-1.5	-1.5	-2.6	-0.8	0.8	0.3	-1.5	0.4	2.6	3.5	2.4	2.0	5.9	4.9	5.8	6.7	6.2	5.4	2.8	1.2
Importações / Imports	-11.8	-9.4	-7.5	-6.3	-7.7	-3.9	-2.7	-1.3	-3.9	-6.0	-7.6	-4.9	-2.0	2.3	4.1	4.2	6.1	2.2	4.0	6.7	10.3	13.4	12.7	11.0

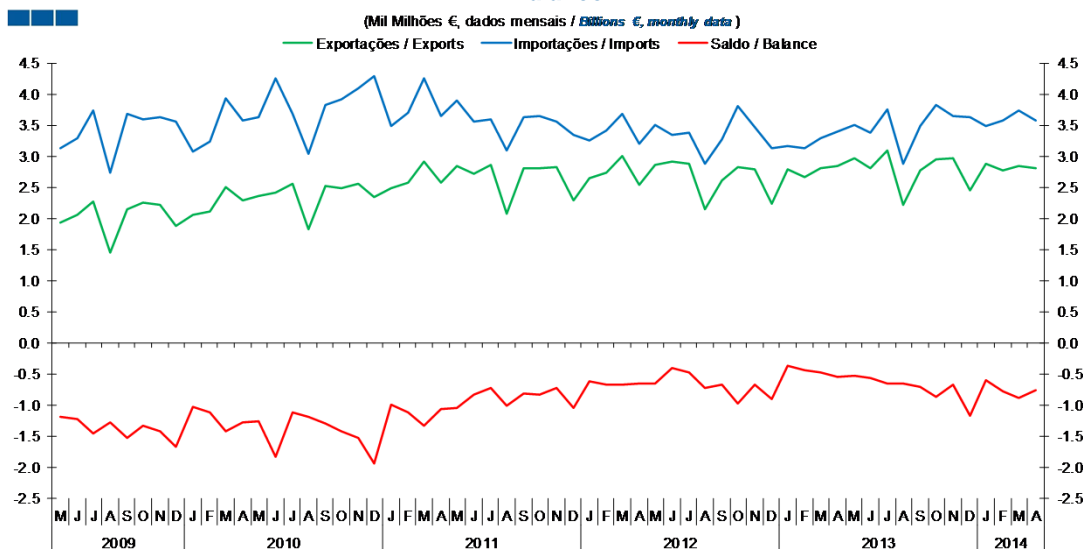
Gráfico / Graph 3.2.
 Taxa de Cobertura
 Coverage Rate



	2012				2013				2014															
	M	J	J	A	S	O	N	D	J	F	M	A	M	J	J	A	S	O	N	D	J	F	M	A
ZE 17 / EA 17	76	78.2	79.6	77	74.6	70.5	72.1	69.6	74.1	76.3	80.9	79.4	79.3	78.2	78	75.4	73.9	71.5	73.3	69.6	71.3	70	73.2	71.9
UE 27 / EU 27	80.8	82.8	84.7	82.9	80.1	76	78	75.4	80	81.6	86.4	84.9	84.7	83.8	83.4	81.1	80	78	79.4	75.4	77.1	75.9	78.8	77.4
Restantes UE / Remaining EU	123.9	122.5	132.8	140.4	135.3	128.9	134.7	131.8	138.6	133.9	140.1	138.3	136.9	138.9	136.7	137.9	141.0	142.5	137.2	131.5	134.5	136.9	132.0	128.8

3. Intracomunitário / Intra-Community

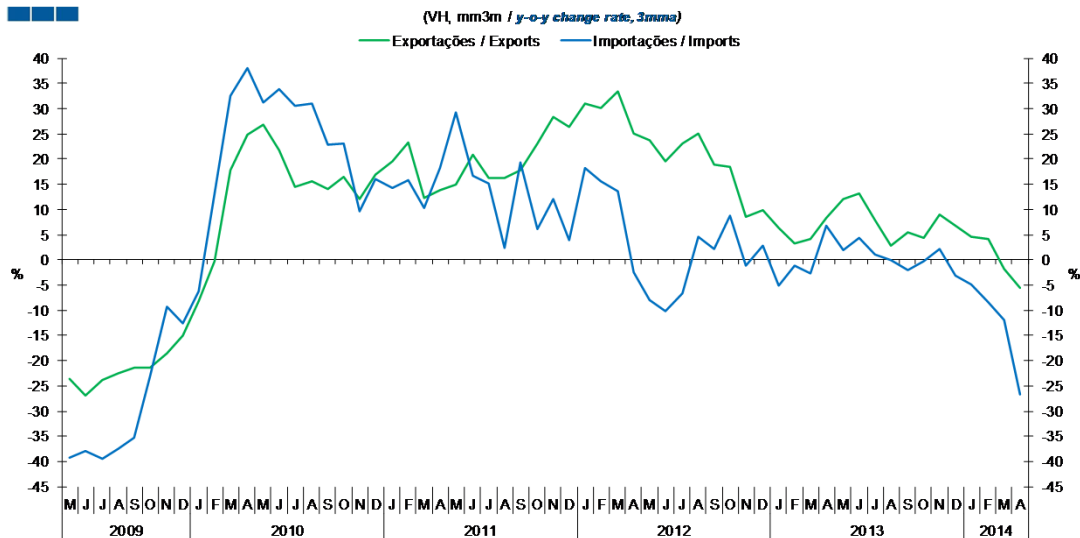
Gráfico / Graph 3.3.
 Saldo
 Balance



	2012												2013												2014			
	M	J	J	A	S	O	N	D	J	F	M	A	M	J	J	A	S	O	N	D	J	F	M	A				
Exportações / Exports	2.9	2.9	2.9	2.1	2.6	2.8	2.8	2.2	2.8	2.7	2.8	2.8	3.0	2.8	3.1	2.2	2.8	3.0	3.0	2.4	2.9	2.8	2.8	2.8				
Importações / Imports	3.5	3.3	3.4	2.9	3.3	3.8	3.5	3.1	3.2	3.1	3.3	3.4	3.5	3.4	3.7	2.9	3.5	3.8	3.7	3.6	3.5	3.6	3.7	3.6				
Saldo / Balance	-0.7	-0.4	-0.5	-0.7	-0.7	-1.0	-0.7	-0.9	-0.4	-0.5	-0.5	-0.6	-0.5	-0.6	-0.7	-0.7	-0.7	-0.9	-0.7	-1.2	-0.6	-0.8	-0.9	-0.8				

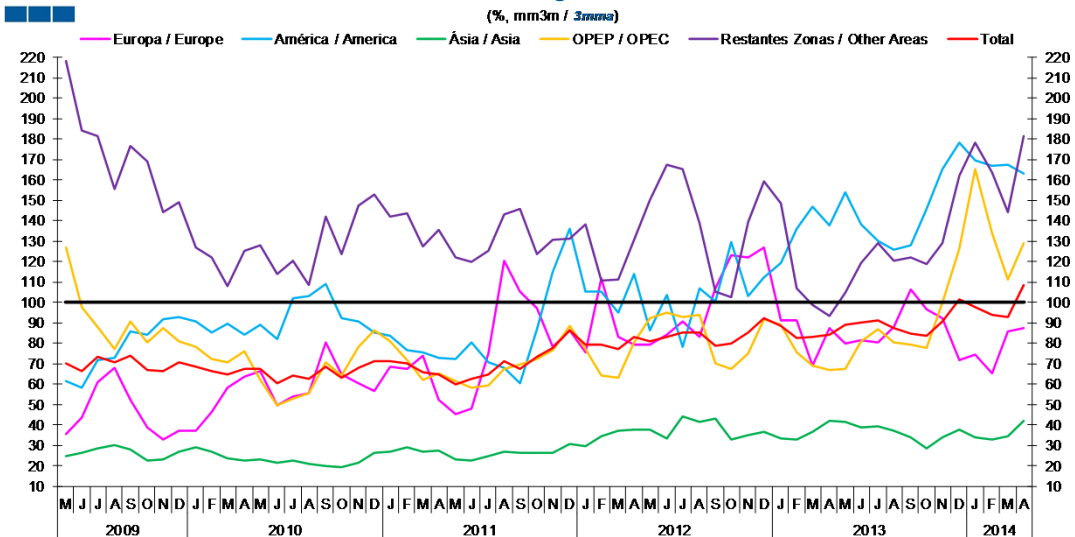
4. Extracomunitário / Extra-Community

Gráfico / Graph 4.1.
 Importações e Exportações
 Imports and Exports



	2012				2013				2013				2013				2014							
	M	J	J	A	S	O	N	D	J	F	M	A	M	J	J	A	S	O	N	D	J	F	M	A
Exportações / Exports	23.7	19.5	23.1	25.1	18.9	18.4	8.5	9.9	6.3	3.4	4.2	8.3	12.1	13.1	7.9	2.8	5.5	4.4	8.9	6.7	4.6	4.1	-1.8	-5.6
Importações / Imports	-8.1	-10.3	-6.6	4.5	2.2	8.7	-1.2	2.9	-5.2	-1.2	-2.7	6.8	1.9	4.3	1.1	0.1	-1.9	-0.3	2.2	-3.1	-4.9	-8.4	-12.0	-26.6

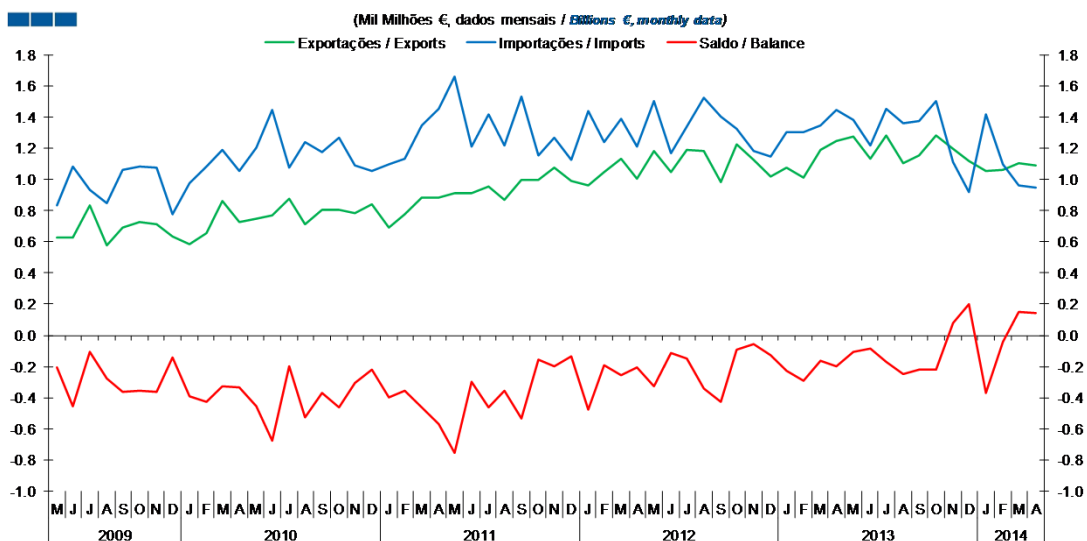
Gráfico / Graph 4.2.
 Taxa de Cobertura
 Coverage Rate



	2012				2013				2013				2013				2014							
	M	J	J	A	S	O	N	D	J	F	M	A	M	J	J	A	S	O	N	D	J	F	M	A
Europa / Europe	79.5	84.2	90.7	83.1	106.8	123.1	122.0	126.6	91.4	91.1	69.2	87.5	79.7	81.3	80.4	88.2	106.6	96.5	92.1	71.5	74.5	65.4	86.0	87.5
América / America	86.3	103.5	78.3	106.9	100.6	129.4	103.0	112.0	119.5	135.9	146.6	137.8	153.9	138.0	130.0	125.5	127.8	145.7	165.3	178.0	169.4	166.8	167.6	163.1
Ásia / Asia	38.0	33.5	44.0	41.5	43.4	33.1	35.2	36.5	33.4	33.1	36.9	42.0	41.3	38.6	39.3	37.0	33.7	28.7	34.2	37.7	33.8	32.9	34.5	42.3
OPEP / OPEC	92.3	94.9	92.9	94.1	70.1	67.7	74.7	91.9	89.1	75.3	69.0	67.0	67.6	81.2	86.8	80.3	79.4	77.6	99.8	126.3	165.4	133.6	111.0	128.9
Restantes Zonas / Other Areas	150.1	167.4	165.2	138.9	105.4	102.4	139.4	159.1	148.7	106.9	98.7	93.3	104.9	119.1	129.2	120.3	122.0	118.9	128.9	161.9	178.4	163.5	144.3	181.3
Total	80.8	83.3	85.3	85.1	78.7	79.8	85.3	92.3	88.7	82.8	82.9	84.2	88.9	90.4	91.1	87.4	84.7	83.6	90.9	101.7	97.5	94.0	92.6	108.2

4. Extracomunitário / Extra-Community

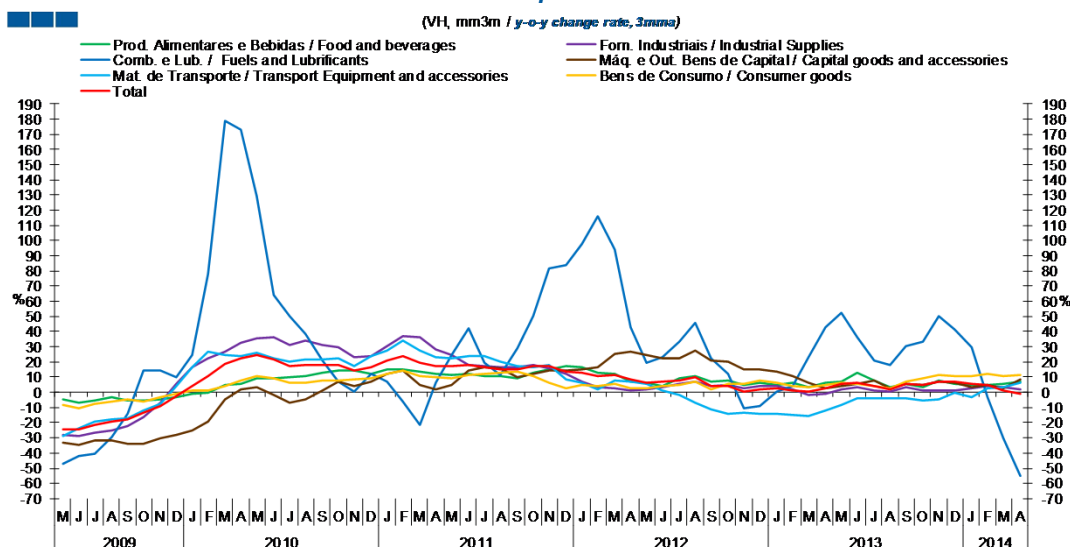
Gráfico / Graph 4.3.
 Saldo
 Balance



	2012		2013		2014	
	M	J	J	A	S	O
Exportações / Exports	1.2	1.0	1.2	1.2	1.0	1.2
Importações / Imports	1.5	1.2	1.3	1.5	1.4	1.3
Saldo / Balance	-0.3	-0.1	-0.1	-0.3	-0.4	-0.1

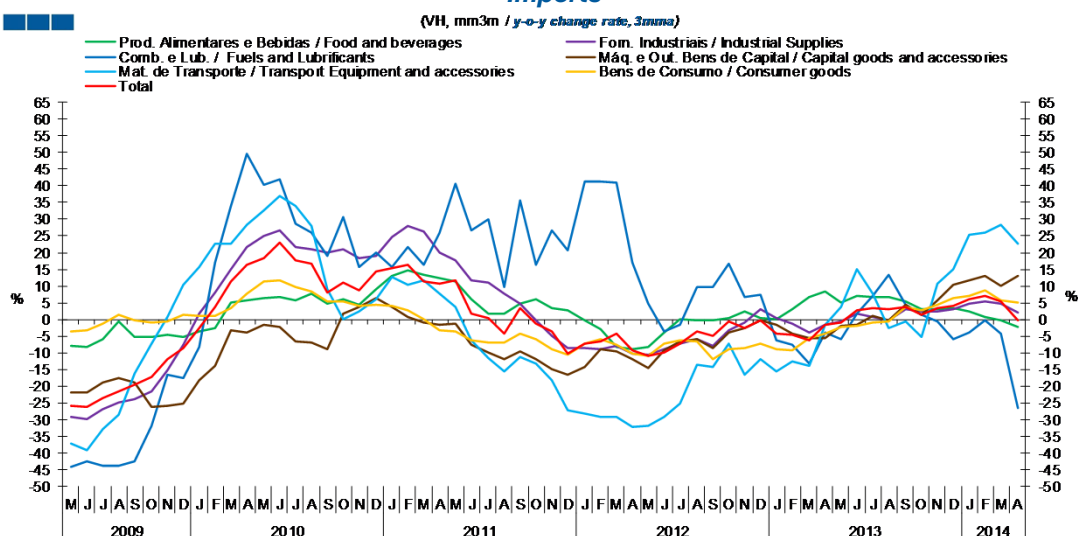
5. Grandes Categorias Económicas / Broad Economic Categories

Gráfico / Graph 5.1.
Exportações
Exports



	2012												2013												2014			
	M	J	J	A	S	O	N	D	J	F	M	A	M	J	J	A	S	O	N	D	J	F	M	A				
Produtos Alimentares e Bebidas / Food and Beverages	6.4	4.2	9.0	10.6	7.1	7.6	4.6	5.9	4.8	6.2	3.5	6.4	7.3	12.8	8.0	3.3	5.2	3.5	7.8	5.4	4.6	4.8	5.4	6.9				
Comb. e Lub. / Fuels and Lubricants	19.3	23.2	33.2	45.6	22.4	12.2	-10.5	-8.8	0.8	4.3	23.0	42.6	52.1	36.3	20.7	18.2	30.2	33.5	50.2	41.0	30.0	-3.1	-30.4	-55.1				
Mat. de Transporte / Transport equipment and accessories	5.2	0.9	-1.5	-7.1	-11.6	-14.3	-13.7	-14.4	-13.9	-14.9	-15.9	-12.3	-8.4	-3.7	-3.6	-4.0	-3.6	-5.7	-4.8	-0.6	-3.2	2.8	3.4	6.2				
Forn. Industriais / Industrial Supplies	1.7	3.6	5.3	6.7	3.8	4.7	2.4	4.3	4.3	1.9	-1.4	-1.0	1.6	3.3	1.3	0.1	3.2	0.9	1.4	1.4	2.8	4.3	3.1	2.1				
Máq. e Out. Bens de Capital / Capital Goods and Accessories	24.4	22.3	22.6	27.7	21.1	20.3	15.1	15.3	13.3	10.5	6.5	2.8	4.0	5.4	8.1	2.5	5.7	4.7	7.2	6.1	3.1	5.1	2.9	8.1				
Bens de Consumo / Consumer Goods	2.8	4.1	4.5	6.7	1.6	5.6	5.3	8.0	6.3	4.1	3.2	5.1	6.6	5.4	3.9	2.3	7.0	9.0	11.1	10.8	10.4	12.2	11.0	11.2				
Total	6.6	6.6	7.9	9.6	4.2	4.1	0.6	2.2	2.3	1.0	0.1	2.6	5.3	6.2	4.0	2.2	5.8	4.8	6.7	6.7	5.8	5.1	1.5	-0.8				

Gráfico / Graph 5.2.
Importações
Imports



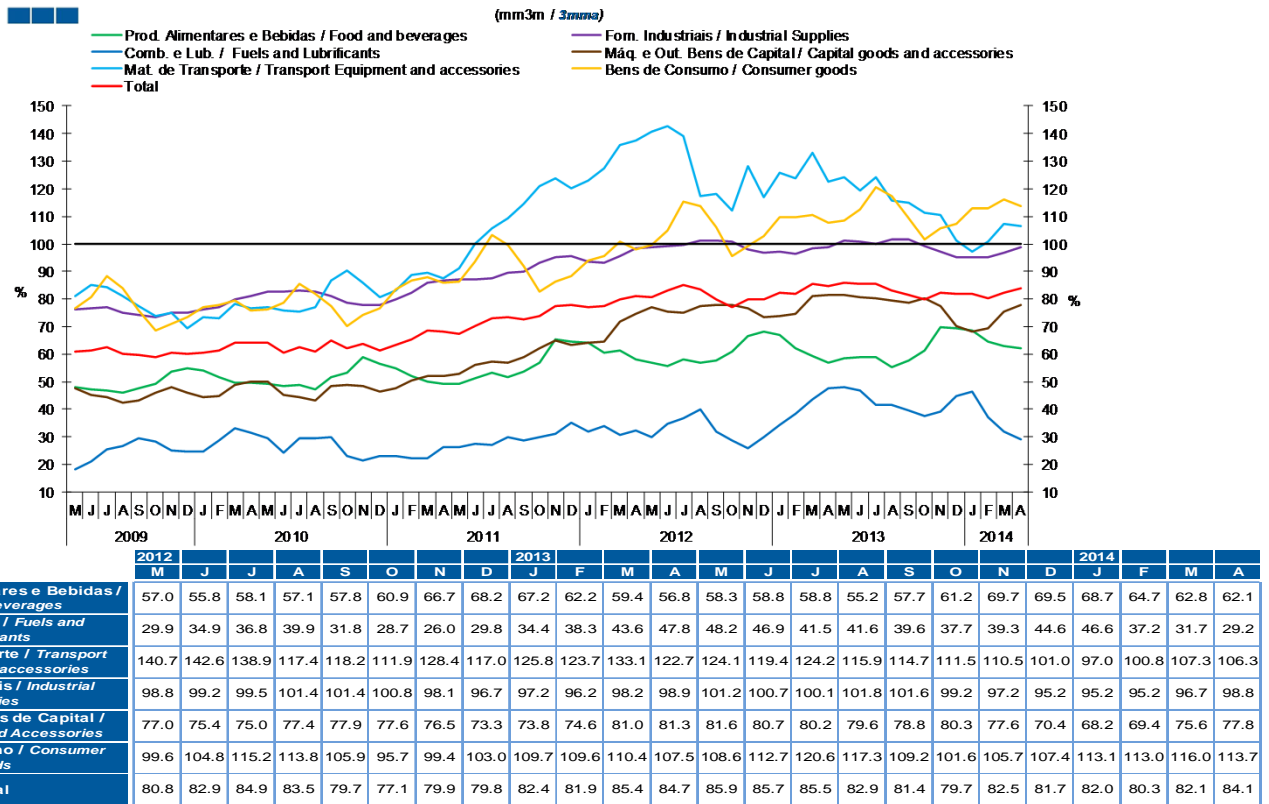
	2012												2013												2014			
	M	J	J	A	S	O	N	D	J	F	M	A	M	J	J	A	S	O	N	D	J	F	M	A				
Produtos Alimentares e Bebidas / Food and Beverages	-8.1	-4.1	0.0	-0.2	-0.3	0.6	2.3	0.4	0.2	3.1	6.6	8.5	4.9	7.0	6.7	6.8	5.4	2.9	3.0	3.5	2.3	0.7	-0.3	-2.3				
Comb. e Lub. / Fuels and Lubricants	4.8	-3.5	-1.5	9.7	9.9	16.6	6.6	7.4	-6.3	-7.5	-13.3	-3.8	-5.8	1.6	7.0	13.2	4.4	1.6	-0.5	-5.8	-3.9	-0.4	-4.3	-26.6				
Mat. de Transporte / Transport equipment and accessories	-31.9	-29.3	-25.1	-13.4	-14.3	-7.3	-16.7	-12.0	-15.7	-12.5	-14.0	-1.7	3.8	15.0	7.8	-2.7	-0.7	-5.3	10.6	15.1	25.5	26.1	28.2	22.5				
Forn. Industriais / Industrial Supplies	-10.4	-8.9	-7.3	-5.9	-7.7	-3.3	-0.8	3.1	0.5	-1.1	-4.0	-1.6	-0.7	1.8	0.7	-0.3	3.0	2.5	2.3	2.9	4.9	5.4	4.7	2.2				
Máq. e Out. Bens de Capital / Capital Goods and Accessories	-14.5	-9.3	-6.5	-6.0	-8.7	-3.8	-2.5	-0.3	-1.5	-4.1	-5.5	-5.6	-1.9	-1.6	1.0	-0.3	4.5	1.3	5.8	10.5	11.5	12.9	10.2	13.0				
Bens de Consumo / Consumer Goods	-10.7	-7.2	-6.2	-6.6	-11.8	-8.8	-8.7	-7.4	-9.0	-9.1	-5.7	-4.3	-2.3	-2.0	-0.8	-0.8	3.8	2.6	4.4	6.3	7.1	8.8	5.7	5.1				
Total	-11.0	-9.8	-7.4	-3.5	-5.0	-0.5	-2.4	-0.4	-4.4	-4.7	-6.2	-1.7	-0.9	2.8	3.2	3.0	3.6	1.4	3.5	4.2	6.2	7.2	5.5	-0.1				

Nota: Não inclui Bens N.E. Noutra Categoria devido ao seu reduzido valor relativo e elevada variabilidade.

Note: Does not include Goods Not Elsewhere Specified because of its small relative value and high variability

5. Grandes Categorias Económicas / Broad Economic Categories

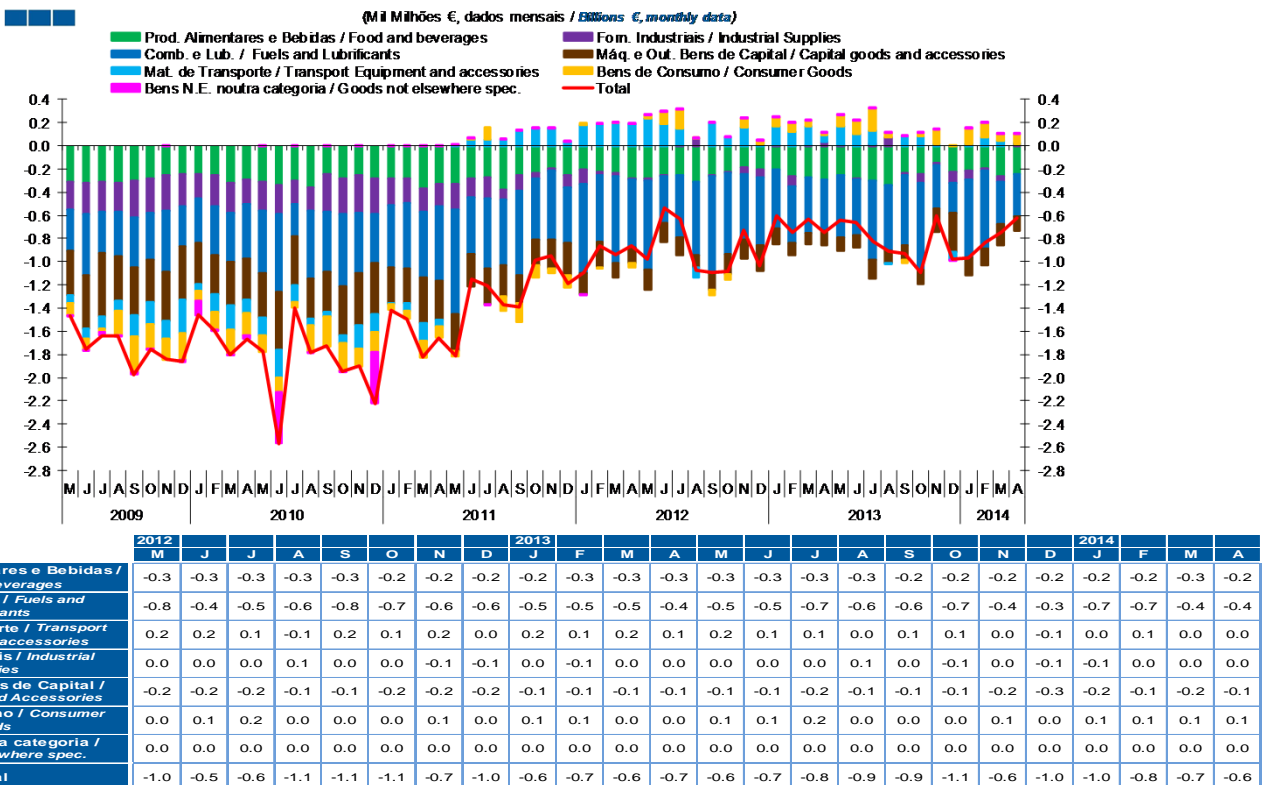
Gráfico / Graph 5.3.
Taxa de Cobertura
Coverage Rate



Nota: Não inclui Bens N.E. Outra Categoria devido ao seu reduzido valor relativo e elevada variabilidade.

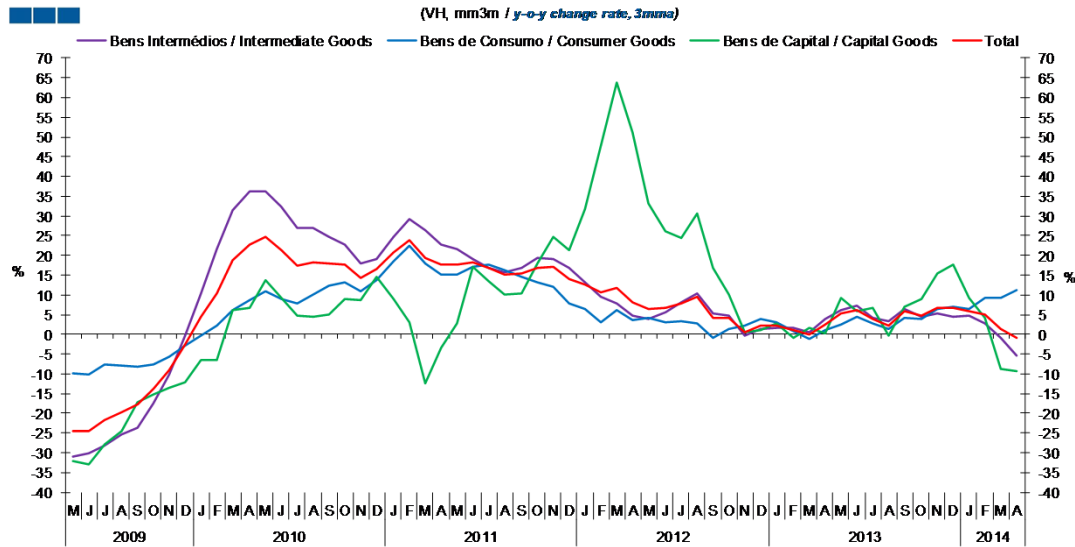
Note: Does not include Goods Not Elsewhere Specified because of its small relative value and high variability

Gráfico / Graph 5.4.
Saldo
Balance



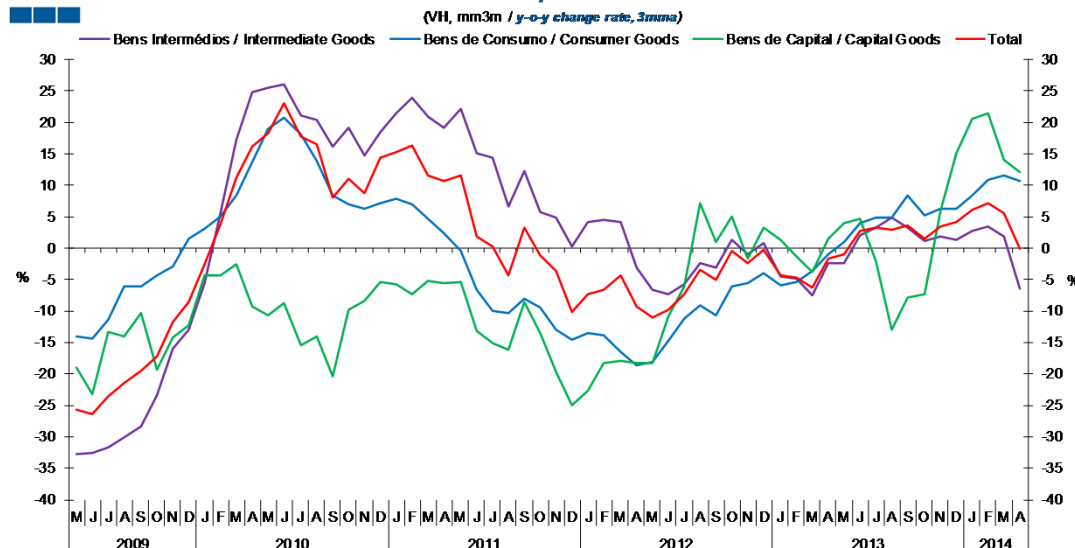
6. Classes Básicas de Bens do Sistema Europeu de Contas Nacionais / Basic Classes of Goods in the European System of Accounts

Gráfico / Graph 6.1.
 Exportações
 Exports



	2012				2013				2014															
	M	J	J	A	S	O	N	D	J	F	M	A	M	J	J	A	S	O	N	D	J	F	M	A
Bens Intermediários / Intermediate Goods	3.9	5.5	8.0	10.5	5.4	4.6	-0.4	1.3	1.7	1.5	0.5	3.8	6.1	7.2	4.1	3.2	6.6	4.5	5.3	4.5	4.6	2.8	-0.8	-5.5
Bens de Consumo / Consumer Goods	4.1	3.1	3.3	2.8	-1.0	1.4	2.3	3.9	3.0	0.8	-1.2	1.1	2.4	4.6	2.8	1.4	4.1	3.9	6.4	6.9	6.3	9.2	9.3	11.1
Bens de Capital / Capital Goods	33.1	26.0	24.4	30.7	16.9	10.1	0.5	1.1	2.8	-0.8	1.5	0.4	9.3	5.8	6.6	-0.3	6.9	9.1	15.5	17.6	9.4	4.1	-8.7	-9.2
Total	6.6	6.6	7.9	9.6	4.2	4.1	0.6	2.2	2.3	1.0	0.1	2.6	5.3	6.2	4.0	2.2	5.8	4.8	6.7	6.7	5.8	5.1	1.5	-0.8

Gráfico / Graph 6.2.
 Importações
 Imports

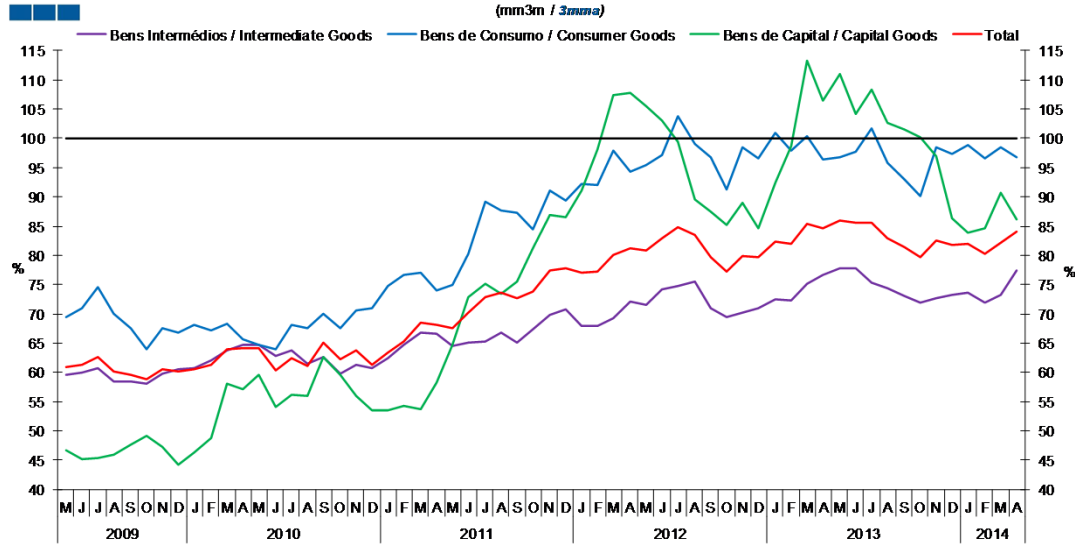


	2012				2013				2014															
	M	J	J	A	S	O	N	D	J	F	M	A	M	J	J	A	S	O	N	D	J	F	M	A
Bens Intermediários / Intermediate Goods	-6.6	-7.4	-5.8	-2.4	-3.2	1.4	-1.1	0.8	-4.6	-4.8	-7.5	-2.5	-2.4	2.1	3.3	4.8	3.3	1.1	1.8	1.4	2.8	3.4	1.8	-6.4
Bens de Consumo / Consumer Goods	-18.2	-14.8	-11.2	-9.1	-10.7	-6.1	-5.5	-3.9	-5.9	-5.5	-3.7	-1.0	1.0	4.1	4.9	4.8	8.4	5.2	6.3	6.2	8.4	10.8	11.6	10.7
Bens de Capital / Capital Goods	-18.3	-10.9	-6.1	7.2	1.0	5.0	-1.7	3.3	1.3	-1.4	-3.8	1.6	3.9	4.7	-2.1	-13.0	-7.9	-7.2	5.9	15.1	20.5	21.4	14.0	12.2
Total	-11.0	-9.8	-7.4	-3.5	-5.0	-0.5	-2.4	-0.4	-4.4	-4.7	-6.2	-1.7	-0.9	2.8	3.2	3.0	3.6	1.4	3.5	4.2	6.2	7.2	5.5	-0.1

Nota: Não inclui a série Outros Bens devido ao seu baixo valor relativo e elevada variabilidade.
 Note: Does not include Other Goods because of its small relative value and high variability.

6. Classes Básicas de Bens do Sistema Europeu de Contas Nacionais / Basic Classes of Goods in the European System of Accounts

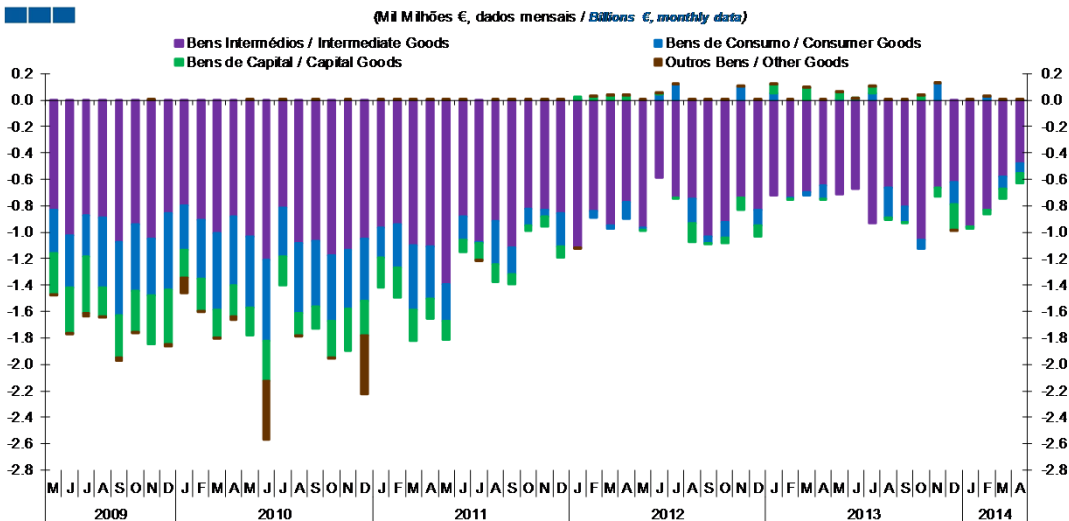
Gráfico / Graph 6.3.
 Taxa de Cobertura
 Coverage Rate



	2012												2013					2014						
	M	J	J	A	S	O	N	D	J	F	M	A	M	J	J	A	S	O	N	D	J	F	M	A
Bens Intermediários / Intermediate Goods	71.6	74.1	74.8	75.5	70.9	69.5	70.2	71.0	72.4	72.4	75.2	76.7	77.8	77.8	75.4	74.3	73.1	71.8	72.6	73.2	73.7	71.9	73.3	77.4
Bens de Consumo / Consumer Goods	95.4	97.2	103.7	99.0	96.8	91.2	98.5	96.7	100.9	98.0	100.4	96.3	96.8	97.7	101.7	95.8	92.9	90.0	98.6	97.3	98.9	96.5	98.4	96.7
Bens de Capital / Capital Goods	105.5	103.1	99.5	89.6	87.4	85.2	88.9	84.6	92.4	98.7	113.3	106.5	110.9	104.1	108.4	102.6	101.5	100.2	97.0	86.4	83.8	84.6	90.7	86.1
Total	80.8	82.9	84.9	83.5	79.7	77.1	79.9	79.8	82.4	81.9	85.4	84.7	85.9	85.7	85.5	82.9	81.4	79.7	82.5	81.7	82.0	80.3	82.1	84.1

Nota: Não inclui a série Outros Bens devido ao seu baixo valor relativo e elevada variabilidade.
 Note: Does not include Other Goods because of its small relative value and high variability.

Gráfico / Graph 6.4.
 Saldo de Bens
 Balance of Goods



	2012												2013					2014						
	M	J	J	A	S	O	N	D	J	F	M	A	M	J	J	A	S	O	N	D	J	F	M	A
Bens Intermediários / Intermediate Goods	-1.0	-0.6	-0.7	-0.7	-1.0	-0.9	-0.7	-0.8	-0.7	-0.7	-0.7	-0.6	-0.7	-0.7	-0.9	-0.7	-0.8	-1.1	-0.7	-0.6	-1.0	-0.8	-0.6	-0.5
Bens de Consumo / Consumer Goods	0.0	0.0	0.1	-0.2	0.0	-0.1	0.1	-0.1	0.1	0.0	0.0	-0.1	0.0	0.0	0.1	-0.2	-0.1	-0.1	0.1	-0.2	0.0	0.0	-0.1	-0.1
Bens de Capital / Capital Goods	0.0	0.0	0.0	-0.1	0.0	0.0	-0.1	-0.1	0.1	0.0	0.1	0.0	0.1	0.0	0.0	0.0	0.0	-0.1	-0.2	0.0	0.0	0.0	-0.1	-0.1
Outros Bens / Other Goods	0.0	0.0	0.0	0.0	0.0	0.0	0.0	0.0	0.0	0.0	0.0	0.0	0.0	0.0	0.0	0.0	0.0	0.0	0.0	0.0	0.0	0.0	0.0	0.0
Total	-1.0	-0.5	-0.6	-1.1	-1.1	-1.1	-0.7	-1.0	-0.6	-0.7	-0.6	-0.7	-0.6	-0.7	-0.8	-0.9	-0.9	-1.1	-0.6	-1.0	-1.0	-0.8	-0.7	-0.6

6. Classes Básicas de Bens do Sistema Europeu de Contas Nacionais / Basic Classes of Goods in the European System of Accounts

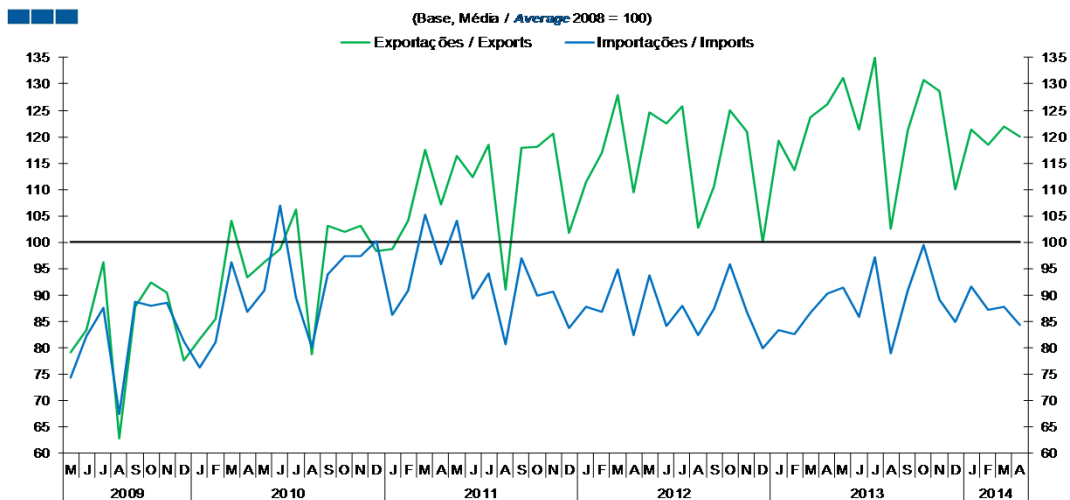
Tabela / Table 1.1.
Estrutura do Saldo
Balance Structure

Milhões de euros \ Millions of euros

		2013						2014						2014											
		M		J		J		A		S		O		N		D		J		F		M		A	
		M€	%	M€	%	M€	%	M€	%	M€	%	M€	%	M€	%	M€	%	M€	%	M€	%	M€	%	M€	%
Bens Intermedios / Intermediate Goods	Prod. alim. e bebidas / <i>Foods and beverages</i>	-104	16	-146	22	-154	19	-142	16	-140	15	-158	14	-140	23	-119	12	-105	11	-100	12	-137	18	-110	18
	Forn. industriais NE noutra categoria / <i>Industrial supplies NE specified</i>	6	-1	-12	2	11	-1	70	-8	-19	2	-81	7	-17	3	-97	10	-79	8	-18	2	-43	6	12	-2
	Comb. e lubrificantes / <i>Fuel and lubricants</i>	-603	94	-511	77	-742	90	-618	68	-651	70	-801	74	-457	76	-324	33	-742	77	-697	84	-364	49	-340	54
	Máquinas, outros bens de capital (Partes e acessórios) / <i>Capital goods and parts and accessories</i>	-66	10	-36	5	-66	8	-36	4	-50	5	-78	7	-64	11	-93	10	-74	8	-58	7	-61	8	-75	12
	Material de transportes (Partes e acessórios) / <i>Transport equipment (Parts and accessories)</i>	58	-9	33	-5	23	-3	65	-7	52	-6	64	-6	12	-2	10	-1	41	-4	46	-6	29	-4	35	-6
Total		-709	110	-672	102	-928	113	-662	73	-807	87	-1,053	97	-666	111	-623	63	-960	99	-827	100	-576	77	-479	76
Bens de Consumo / Consumption Goods	Prod. alim. e bebidas destinados ao consumo dos particulares / <i>Food and beverages mainly for household consumption</i>	-147	23	-133	20	-152	19	-195	21	-93	10	-82	8	-12	2	-104	11	-107	11	-97	12	-130	17	-130	21
	Material de transporte / <i>Transport equipment</i>	57	-9	22	-3	22	-3	-71	8	8	-1	-17	2	10	-2	-66	7	-31	3	0	0	-26	3	-29	5
	Bens de consumo NE noutra categoria / <i>Consumption goods NE specified</i>	96	-15	117	-18	186	-23	36	-4	-31	3	29	-3	127	-21	3	0	138	-14	126	-15	64	-9	87	-14
Total		6	-1	6	-1	56	-7	-230	25	-117	13	-70	6	125	-21	-167	17	-1	0	29	-3	-92	12	-73	12
Bens de Capital / Capital Goods	Carburantes para motor / <i>Motor spirit</i>	68	-11	36	-5	64	-8	48	-5	48	-5	55	-5	86	-14	63	-6	70	-7	29	-3	-6	1	-28	4
	Máquinas, outros bens de capital (exceto material de transporte) / <i>Capital goods (except transport equipment)</i>	-56	9	-75	11	-94	11	-70	8	-81	9	-52	5	-141	23	-237	24	-81	8	-91	11	-112	15	-47	7
	Material de transportes destinado à indústria / <i>Transport equipment, industrial</i>	46	-7	42	-6	77	-9	4	0	22	-2	30	-3	-9	2	-18	2	2	0	29	-3	35	-5	-4	1
Total		58	-9	3	0	48	-6	-18	2	-11	1	32	-3	-64	11	-191	19	-9	1	-34	4	-82	11	-78	12
Outros / Others		2	0	1	0	2	0	2	0	3	0	2	0	3	0	0	0	2	0	1	0	1	0	2	0
Total		-643	100	-662	100	-823	100	-908	100	-932	100	-1,090	100	-602	100	-982	100	-968	100	-831	100	-750	100	-627	100

7. Índice GEE de Comércio Internacional de Bens / *GEE Index of International Trade of Goods*

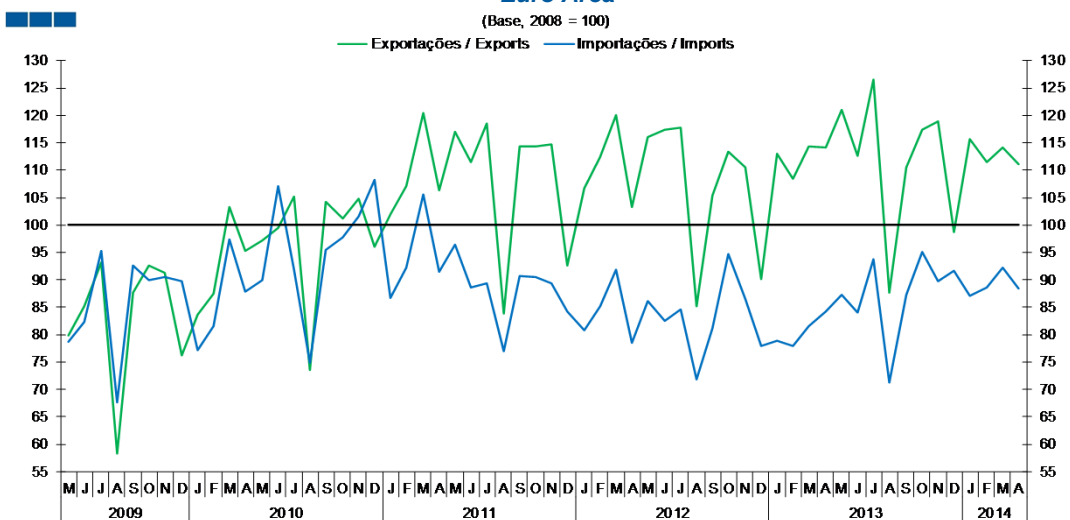
Gráfico / Graph 7.1.
 Total



Fonte / Source: INE

	2012												2013												2014			
	M	J	J	A	S	O	N	D	J	F	M	A	M	J	J	A	S	O	N	D	J	F	M	A				
Exportações / Exports	124.6	122.6	125.7	102.8	110.6	125.1	121.0	100.1	119.3	113.6	123.6	126.2	131.1	121.4	135.1	102.5	121.2	130.9	128.6	110.0	121.4	118.4	122.0	120.0				
Importações / Imports	93.7	84.1	87.9	82.3	87.4	95.8	86.8	79.9	83.4	82.7	86.7	90.3	91.4	85.8	97.1	79.0	90.8	99.6	89.1	84.9	91.6	87.2	87.8	84.4				

Gráfico / Graph 7.2.
 Zona Euro
 Euro Area

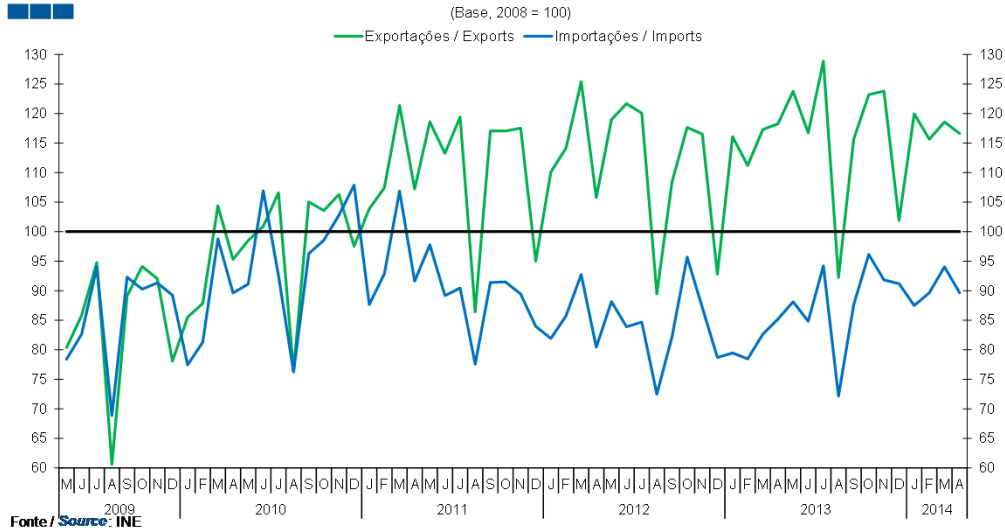


Fonte / Source: INE

	2012												2013												2014			
	M	J	J	A	S	O	N	D	J	F	M	A	M	J	J	A	S	O	N	D	J	F	M	A				
Exportações / Exports	116.0	117.4	117.9	85.2	105.4	113.4	110.6	90.0	113.1	108.5	114.3	114.2	121.0	112.6	126.6	87.6	110.6	117.5	119.0	98.7	115.8	111.4	114.3	111.1				
Importações / Imports	86.2	82.5	84.6	71.8	81.2	94.6	86.5	77.8	78.9	77.9	81.6	84.3	87.4	84.0	93.8	71.3	87.2	95.1	89.8	91.6	87.1	88.6	92.2	88.4				

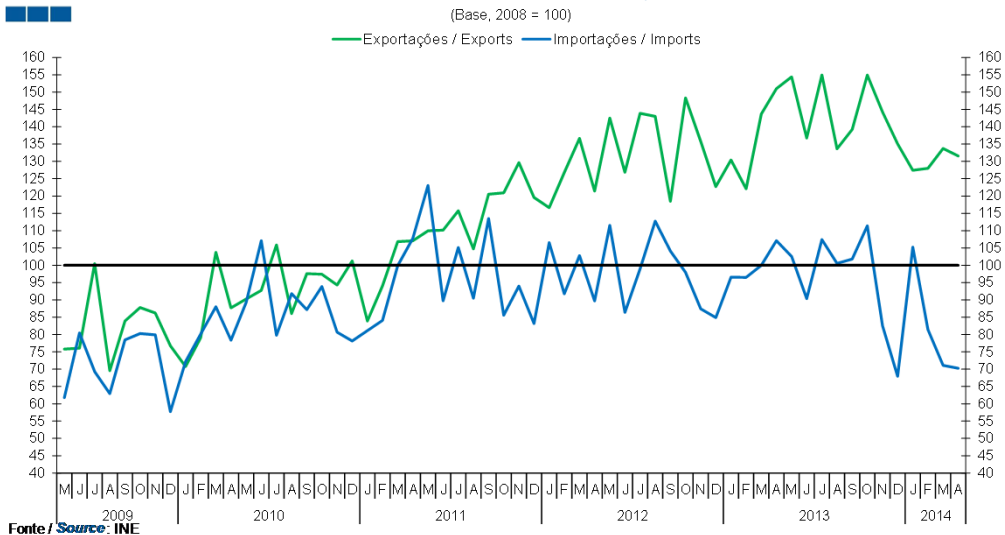
7. Índice GEE de Comércio Internacional de Bens / *GEE Index of International Trade of Goods*

Gráfico / Graph 7.3.
Intracomunitário
Intra-Community



	2012				2013				2014															
	M	J	J	A	S	O	N	D	J	F	M	A												
Exportações / Exports	119.0	121.7	120.1	89.5	108.4	117.6	116.5	92.8	116.1	111.2	117.3	118.2	123.8	116.7	128.9	92.2	115.6	123.2	123.8	101.9	119.9	115.7	118.6	116.6
Importações / Imports	88.2	83.9	84.7	72.5	82.2	95.7	87.2	78.7	79.5	78.5	82.6	85.2	88.1	84.8	94.2	72.1	87.6	96.1	91.8	91.2	87.5	89.6	94.0	89.6

Gráfico / Graph 7.4.
Extracomunitário
Extra-Community



	2012				2013				2014															
	M	J	J	A	S	O	N	D	J	F	M	A												
Exportações / Exports	142.5	126.9	143.9	143.0	118.5	148.3	135.8	122.7	130.4	122.1	143.7	151.0	154.4	136.7	154.9	133.6	139.2	154.9	144.3	135.1	127.4	128.0	133.7	131.6
Importações / Imports	111.5	86.4	99.0	112.7	104.1	98.0	87.4	84.9	96.6	96.5	100.0	107.1	102.6	90.4	107.4	100.5	101.8	111.4	82.5	67.9	105.3	81.4	71.1	70.3