

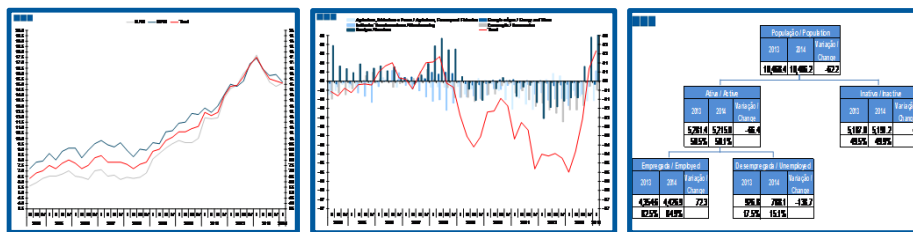
# Estatísticas Temáticas de Conjuntura

## Short-term Thematic Statistics

- N° 2/2014 -

13 de maio de 2014

May, 13, 2014



# Estatísticas do Emprego

## Labour Statistics

- 1º Trimestre de 2014 -

- 1st Quarter of 2014 -

Fonte: Instituto Nacional de Estatística

Source: Statistics Portugal

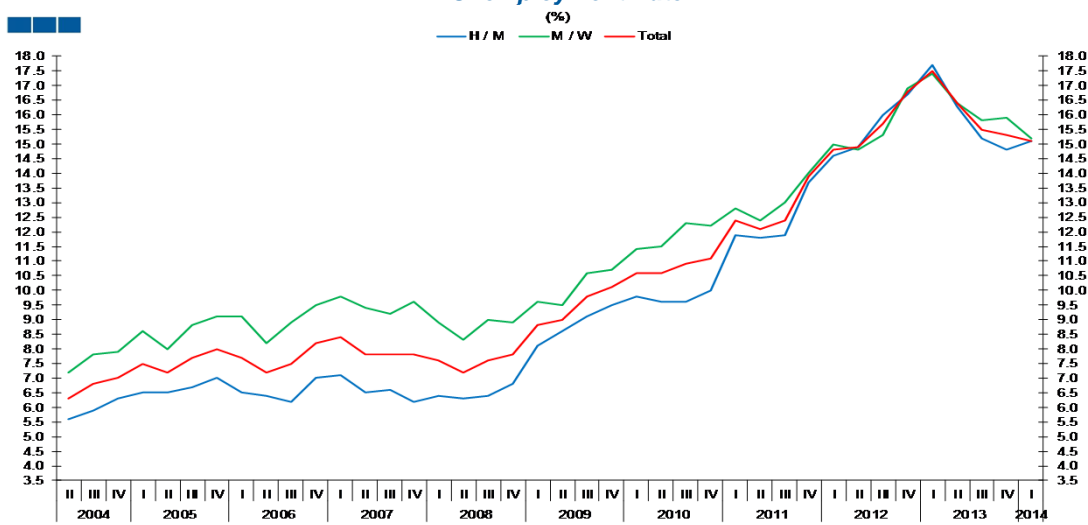
Nota: Quebra de série no 1º Trimestre de 2011 devido a alteração metodológica sem retroprojeção.  
Note: Series break in the 1st quarter of 2011 due to methodological changes without backward projection.

## Índice / Index

|  | Página /<br>Page |
|--|------------------|
| <b>1. Principais Indicadores / Main Indicators</b>   |                  |
| Taxa de Desemprego / <i>Unemployment Rate</i>  | 3                |
| Taxa de Atividade / <i>Activity Rate</i>   | 3                |
| Taxa de Atividade e de Desemprego / <i>Activity and Unemployment Rate</i>  | 4                |
| População Ativa, Inativa, Empregada e Desempregada / <i>Active, Inactive, Employed and Unemployed Population</i>       | 5                |
| População Ativa e Inativa / <i>Active and Inactive Population</i>  | 5                |
| População Ativa, Empregada e Desempregada / <i>Active, Employed and Unemployed Population</i>                          | 6                |
| Desemprego de longa duração (12 meses ou mais) / <i>Long-term Unemployment (12 months or longer)</i>                   | 7                |
| <b>2. Regiões Nuts II / Nuts II regions</b>  |                  |
| Taxa de Desemprego / <i>Unemployment Rate</i>  | 8                |
| <b>3. Ramos de Atividade / Industries</b>  |                  |
| População Empregada / <i>Employed Population</i>   | 9                |
| Estrutura da População Empregada / <i>Employed Population Structure</i>  | 9                |
| Variação Homóloga da População Empregada / <i>Employed Population Annual Change</i>                                    | 10               |
| Contributo (p.p.) para a Variação Homóloga (%) do Emprego / <i>Contribution (p.p.) to Employment Annual Change (%)</i> | 10               |
| População Desempregada / <i>Unemployed Population</i>  | 11               |
| Estrutura da População Desempregada / <i>Unemployed Population Structure</i>   | 11               |
| Variação Homóloga da População Desempregada / <i>Unemployed Population Annual Change</i>                               | 12               |
| <b>4. Faixa Etária / Age Groups</b>  |                  |
| População Empregada / <i>Employed Population</i>   | 13               |
| Estrutura da População Empregada / <i>Employed Population Structure</i>  | 13               |
| Variação Homóloga da População Empregada / <i>Employed Population Annual Change</i>                                    | 14               |
| População Desempregada / <i>Unemployed Population</i>  | 15               |
| Variação Homóloga da População Desempregada / <i>Unemployed Population Annual Change</i>                               | 15               |
| Taxa de Desemprego / <i>Unemployment Rate</i>  | 16               |
| População Inativa / <i>Inactive Population</i>   | 17               |
| Estrutura da População Inativa / <i>Inactive Population Structure</i>  | 17               |
| <b>5. Grau de Ensino / Highest Level of Education Attained</b>   |                  |
| População Empregada / <i>Employed Population</i>   | 18               |
| Variação Homóloga da População Empregada / <i>Employed Population Annual Change</i>                                    | 18               |
| População Desempregada / <i>Unemployed Population</i>  | 19               |
| Variação Homóloga da População Desempregada / <i>Unemployed Population Annual Change</i>                               | 19               |
| Taxa de Desemprego / <i>Unemployment Rate</i>  | 20               |
| <b>6. Árvore do Emprego - GEE / Employment Tree - GEE</b>  |                  |
| Árvore do Emprego - GEE / <i>Employment Tree - GEE</i>   | 21               |

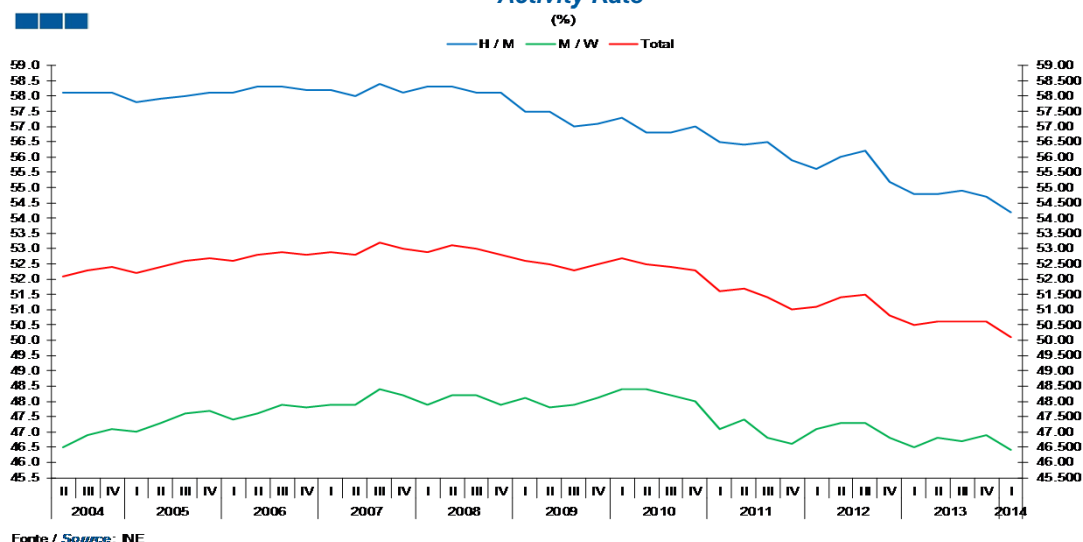
## 1. Principais Indicadores / Main Indicators

Gráfico / Graph 1.1.  
Taxa de Desemprego  
Unemployment Rate



|       | 2008 |     |     |     | 2009 |      |      |      | 2010 |      |      |      | 2011 |      |      |      | 2012 |      |      |      | 2013 |      |      |      | 2014 |
|-------|------|-----|-----|-----|------|------|------|------|------|------|------|------|------|------|------|------|------|------|------|------|------|------|------|------|------|
|       | II   | III | IV  | I   | II   | III  | IV   | I    | II   | III  | IV   | I    | II   | III  | IV   | I    | II   | III  | IV   | I    | II   | III  | IV   | I    |      |
| H / M | 6.3  | 6.4 | 6.8 | 8.1 | 8.6  | 9.1  | 9.5  | 9.8  | 9.6  | 9.6  | 10.0 | 11.9 | 11.8 | 11.9 | 13.7 | 14.6 | 14.9 | 16.0 | 16.7 | 17.7 | 16.3 | 15.2 | 14.8 | 15.1 |      |
| M / W | 8.3  | 9.0 | 8.9 | 9.6 | 9.5  | 10.6 | 10.7 | 11.4 | 11.5 | 12.3 | 12.2 | 12.8 | 12.4 | 13.0 | 14.0 | 15.0 | 14.8 | 15.3 | 16.9 | 17.4 | 16.4 | 15.8 | 15.9 | 15.2 |      |
| Total | 7.2  | 7.6 | 7.8 | 8.8 | 9.0  | 9.8  | 10.1 | 10.6 | 10.6 | 10.9 | 11.1 | 12.4 | 12.1 | 12.4 | 13.9 | 14.8 | 14.9 | 15.7 | 16.8 | 17.5 | 16.4 | 15.5 | 15.3 | 15.1 |      |

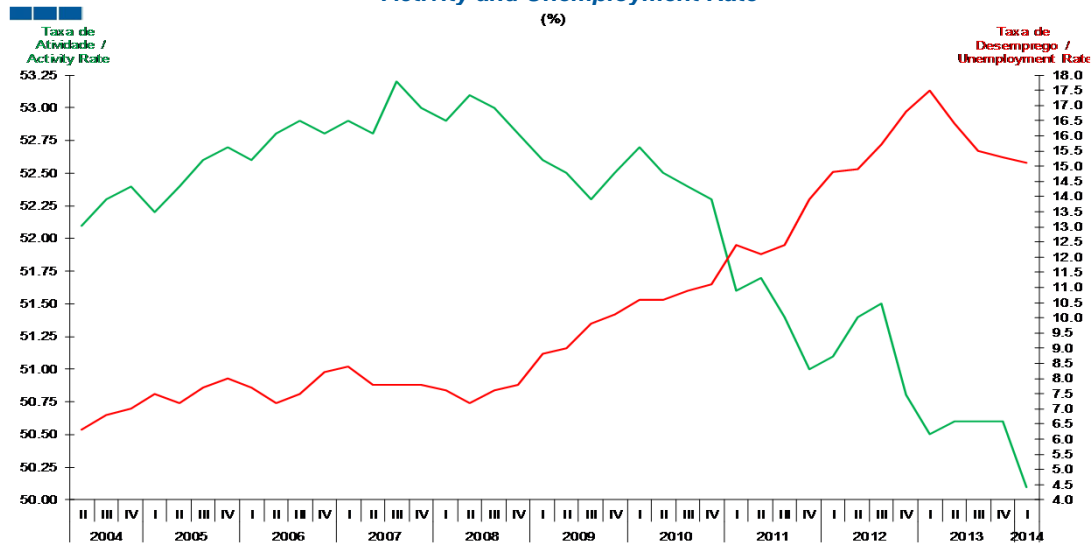
Gráfico / Graph 1.2.  
Taxa de Atividade  
Activity Rate



|       | 2008 |      |      |      | 2009 |      |      |      | 2010 |      |      |      | 2011 |      |      |      | 2012 |      |      |      | 2013 |      |      |      | 2014 |
|-------|------|------|------|------|------|------|------|------|------|------|------|------|------|------|------|------|------|------|------|------|------|------|------|------|------|
|       | II   | III  | IV   | I    | II   | III  | IV   | I    | II   | III  | IV   | I    | II   | III  | IV   | I    | II   | III  | IV   | I    | II   | III  | IV   | I    |      |
| H / M | 58.3 | 58.1 | 58.1 | 57.5 | 57.5 | 57.0 | 57.1 | 57.3 | 56.8 | 56.8 | 57.0 | 56.5 | 56.4 | 56.5 | 55.9 | 55.6 | 56.0 | 56.2 | 55.2 | 54.8 | 54.8 | 54.9 | 54.7 | 54.2 |      |
| M / W | 48.2 | 48.2 | 47.9 | 48.1 | 47.8 | 47.9 | 48.1 | 48.4 | 48.4 | 48.2 | 48.0 | 47.1 | 47.4 | 46.8 | 46.6 | 47.1 | 47.3 | 47.3 | 46.8 | 46.5 | 46.8 | 46.7 | 46.9 | 46.4 |      |
| Total | 53.1 | 53.0 | 52.8 | 52.6 | 52.5 | 52.3 | 52.5 | 52.7 | 52.5 | 52.4 | 52.3 | 51.6 | 51.7 | 51.4 | 51.0 | 51.1 | 51.4 | 51.5 | 50.8 | 50.5 | 50.6 | 50.6 | 50.6 | 50.1 |      |

## 1. Principais Indicadores / Main Indicators

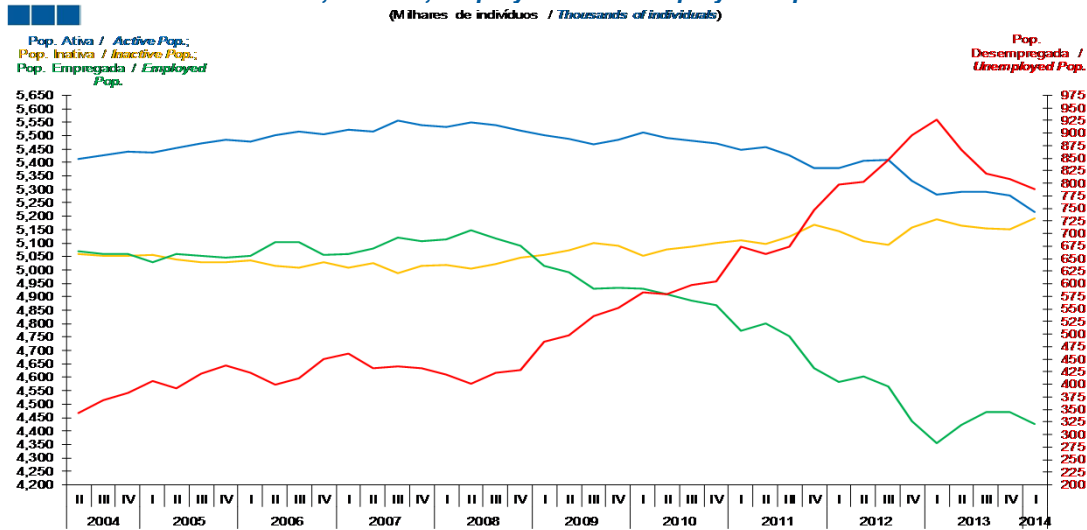
Gráfico / Graph 1.3.  
Taxa de Atividade e de Desemprego  
Activity and Unemployment Rate  
(%)



|  | 2008 |      |      | 2009 |      |      |      | 2010 |      |      |      | 2011 |      |      |      | 2012 |      |      |      | 2013 |      |      |      | 2014 |
|--|------|------|------|------|------|------|------|------|------|------|------|------|------|------|------|------|------|------|------|------|------|------|------|------|
|  | II   | III  | IV   | I    | II   | III  | IV   | I    | II   | III  | IV   | I    | II   | III  | IV   | I    | II   | III  | IV   | I    | II   | III  | IV   | I    |
| Taxa de Atividade / Activity Rate      | 53.1 | 53.0 | 52.8 | 52.6 | 52.5 | 52.3 | 52.7 | 52.5 | 52.4 | 52.3 | 51.6 | 51.7 | 51.4 | 51.0 | 51.1 | 51.4 | 51.5 | 50.8 | 50.5 | 50.6 | 50.6 | 50.6 | 50.1 |      |
| Taxa de Desemprego / Unemployment Rate | 7.2  | 7.6  | 7.8  | 8.8  | 9.0  | 9.8  | 10.1 | 10.6 | 10.6 | 10.9 | 11.1 | 12.4 | 12.1 | 12.4 | 13.9 | 14.8 | 14.9 | 15.7 | 16.8 | 17.5 | 16.4 | 15.5 | 15.3 | 15.1 |

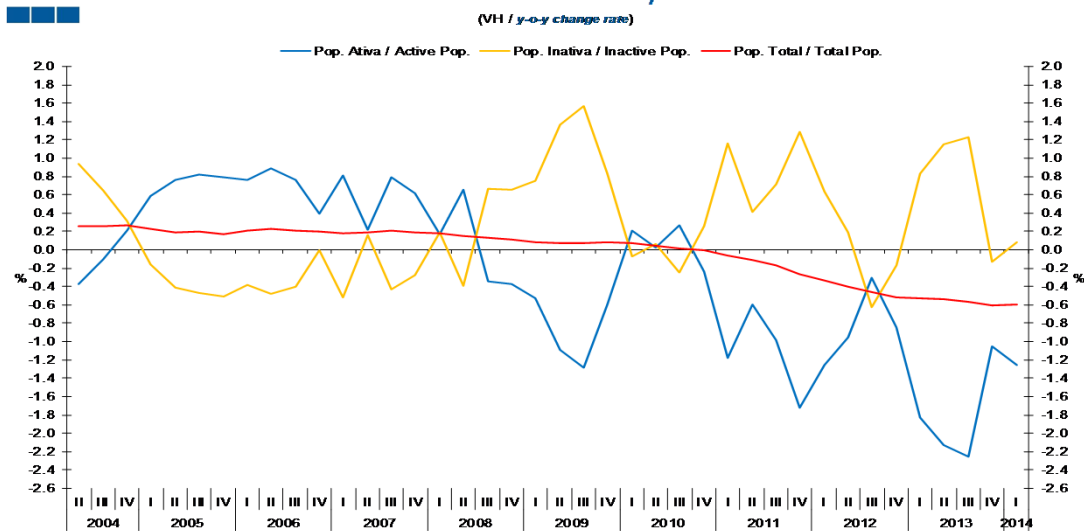
## 1. Principais Indicadores / Main Indicators

Gráfico / Graph 1.4.  
População Ativa, Inativa, Empregada e Desempregada  
Active, Inactive, Employed and Unemployed Population



|  | 2008  |       |       | 2009  |       |       | 2010  |       |       | 2011  |       |       | 2012  |       |       | 2013  |       |       | 2014  |       |       |       |       |       |
|--|-------|-------|-------|-------|-------|-------|-------|-------|-------|-------|-------|-------|-------|-------|-------|-------|-------|-------|-------|-------|-------|-------|-------|-------|
|  | II    | III   | IV    | I     | II    | III   | IV    | I     | II    | III   | IV    | I     | II    | III   | IV    | I     | II    | III   | IV    | I     |       |       |       |       |
| População Ativa / Active Population            | 5,550 | 5,539 | 5,519 | 5,502 | 5,489 | 5,467 | 5,486 | 5,513 | 5,491 | 5,482 | 5,473 | 5,448 | 5,458 | 5,428 | 5,379 | 5,380 | 5,406 | 5,411 | 5,333 | 5,281 | 5,291 | 5,289 | 5,277 | 5,215 |
| População Inativa / Inactive Population        | 5,004 | 5,021 | 5,047 | 5,057 | 5,073 | 5,100 | 5,088 | 5,053 | 5,076 | 5,088 | 5,101 | 5,112 | 5,097 | 5,124 | 5,167 | 5,144 | 5,107 | 5,092 | 5,159 | 5,187 | 5,166 | 5,155 | 5,152 | 5,191 |
| População Empregada / Employed Population      | 5,149 | 5,116 | 5,090 | 5,017 | 4,993 | 4,931 | 4,934 | 4,931 | 4,911 | 4,885 | 4,867 | 4,775 | 4,799 | 4,754 | 4,633 | 4,583 | 4,603 | 4,564 | 4,437 | 4,355 | 4,425 | 4,469 | 4,469 | 4,427 |
| População Desempregada / Unemployed Population | 401   | 423   | 429   | 485   | 497   | 536   | 552   | 582   | 580   | 597   | 606   | 673   | 659   | 675   | 746   | 797   | 803   | 847   | 896   | 927   | 866   | 820   | 808   | 788   |

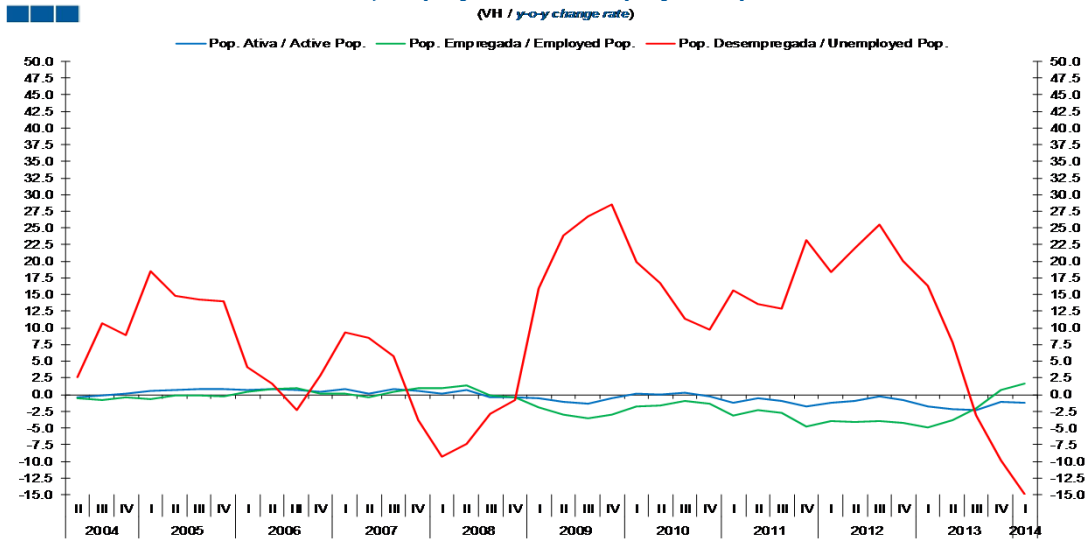
Gráfico / Graph 1.5.  
População Ativa e Inativa  
Active and Inactive Population



|   | 2008 |      |      | 2009 |      |      | 2010 |      |     | 2011 |      |      | 2012 |      |      | 2013 |      |      | 2014 |      |      |      |      |      |
|---|------|------|------|------|------|------|------|------|-----|------|------|------|------|------|------|------|------|------|------|------|------|------|------|------|
|   | II   | III  | IV   | I    | II   | III  | IV   | I    | II  | III  | IV   | I    | II   | III  | IV   | I    | II   | III  | IV   | I    |      |      |      |      |
| População Ativa / Active Population     | 0.7  | -0.3 | -0.4 | -0.5 | -1.1 | -1.3 | -0.6 | 0.2  | 0.0 | 0.3  | -0.2 | -1.2 | -0.6 | -1.0 | -1.7 | -1.3 | -1.0 | -0.3 | -0.8 | -1.8 | -2.1 | -2.3 | -1.1 | -1.3 |
| População Inativa / Inactive Population | -0.4 | 0.7  | 0.7  | 0.8  | 1.4  | 1.6  | 0.8  | -0.1 | 0.1 | -0.2 | 0.3  | 1.2  | 0.4  | 0.7  | 1.3  | 0.6  | 0.2  | -0.6 | -0.2 | 0.8  | 1.2  | 1.2  | -0.1 | 0.1  |
| População Total / Total Population      | 0.2  | 0.1  | 0.1  | 0.1  | 0.1  | 0.1  | 0.1  | 0.1  | 0.0 | 0.0  | 0.0  | -0.1 | -0.1 | -0.2 | -0.3 | -0.3 | -0.4 | -0.5 | -0.5 | -0.5 | -0.5 | -0.6 | -0.6 | -0.6 |

## 1. Principais Indicadores / Main Indicators

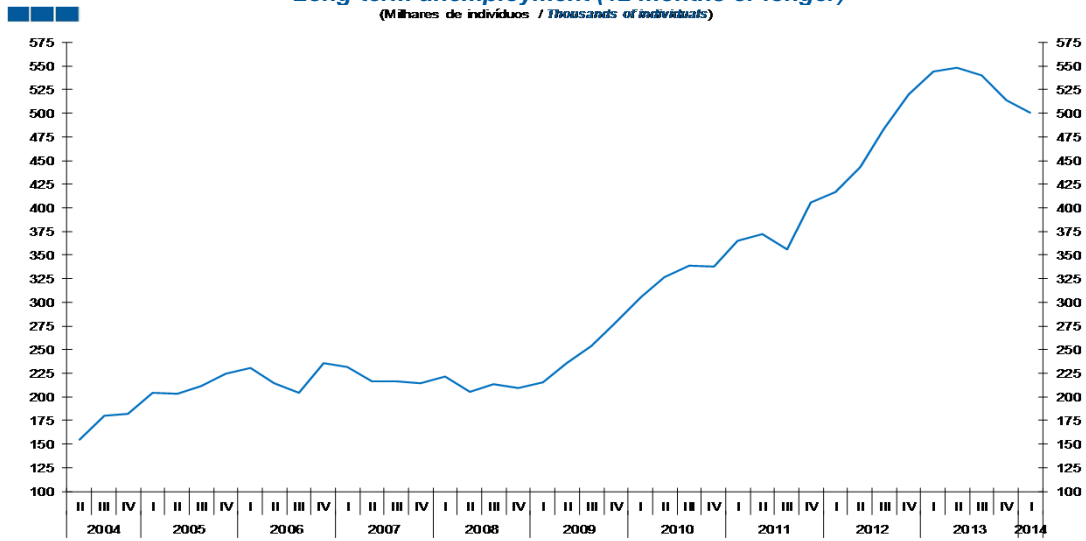
Gráfico / Graph 1.6.  
População Ativa, Empregada e Desempregada  
Active, Employed and Unemployed Population  
(VII / y-o-y change rate)



|  | 2008 |      |      | 2009 |      |      |      | 2010 |      |      |      | 2011 |      |      |      | 2012 |      |      |      | 2013 |      |      |      | 2014  |
|--|------|------|------|------|------|------|------|------|------|------|------|------|------|------|------|------|------|------|------|------|------|------|------|-------|
|  | II   | III  | IV   | I    | II   | III  | IV   | I    | II   | III  | IV   | I    | II   | III  | IV   | I    | II   | III  | IV   | I    | II   | III  | IV   | I     |
| População Ativa / Active Population            | 0.7  | -0.3 | -0.4 | -0.5 | -1.1 | -1.3 | -0.6 | 0.2  | 0.0  | 0.3  | -0.2 | -1.2 | -0.6 | -1.0 | -1.7 | -1.3 | -1.0 | -0.3 | -0.8 | -1.8 | -2.1 | -2.3 | -1.1 | -1.3  |
| População Empregada / Employed Population      | 1.3  | -0.1 | -0.3 | -1.9 | -3.0 | -3.6 | -3.1 | -1.7 | -1.6 | -0.9 | -1.4 | -3.2 | -2.3 | -2.7 | -4.8 | -4.0 | -4.1 | -4.0 | -4.2 | -5.0 | -3.9 | -2.1 | 0.7  | 1.7   |
| População Desempregada / Unemployed Population | -7.3 | -2.9 | -0.8 | 15.9 | 23.9 | 26.8 | 28.5 | 20.0 | 16.7 | 11.4 | 9.8  | 15.7 | 13.6 | 12.9 | 23.2 | 18.3 | 22.0 | 25.6 | 20.1 | 16.3 | 7.8  | -3.2 | -9.8 | -15.0 |

## 1. Principais Indicadores / Main Indicators

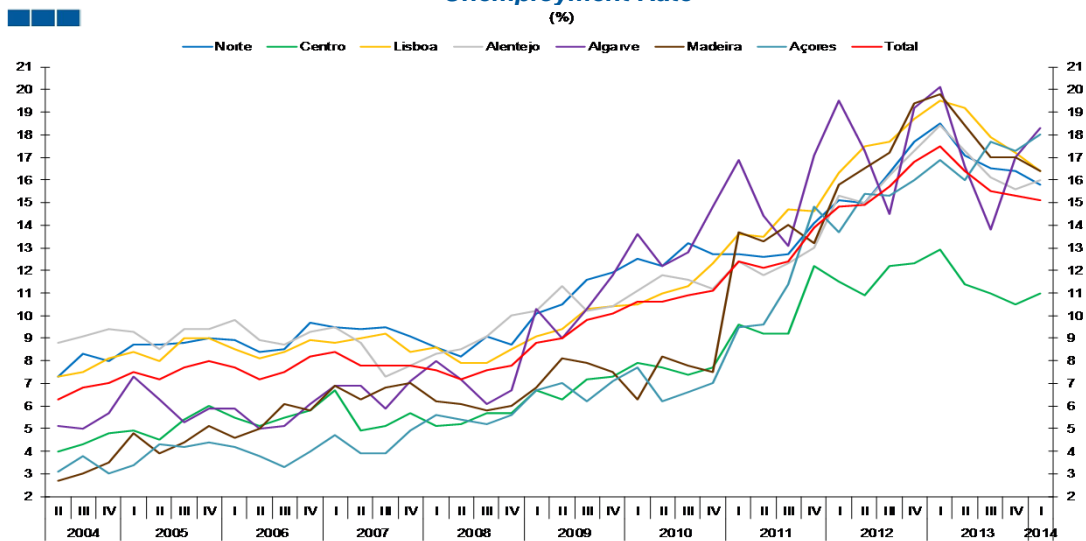
Gráfico / Graph 1.7.  
Desemprego de longa-duração (12 meses ou mais)  
Long-term unemployment (12 months or longer)  
(Milhares de indivíduos / Thousands of individuals)



| Desempregados de LD / LT<br>Unemployed People | 2008 |     |     |     | 2009 |     |     |     | 2010 |     |     |     | 2011 |     |     |     | 2012 |     |     |     | 2013 |     |     |     | 2014 |
|---|------|-----|-----|-----|------|-----|-----|-----|------|-----|-----|-----|------|-----|-----|-----|------|-----|-----|-----|------|-----|-----|-----|------|
|   | II   | III | IV  | I   | II   | III | IV  | I   | II   | III | IV  | I   | II   | III | IV  | I   | II   | III | IV  | I   | II   | III | IV  | I   |      |
|   | 206  | 214 | 209 | 215 | 235  | 253 | 279 | 305 | 326  | 339 | 338 | 365 | 372  | 356 | 406 | 416 | 443  | 484 | 520 | 544 | 548  | 540 | 514 | 501 |      |

## 2. Regiões Nuts II / Nuts II Regions

Gráfico / Graph 2.1.  
Taxa de Desemprego  
Unemployment Rate

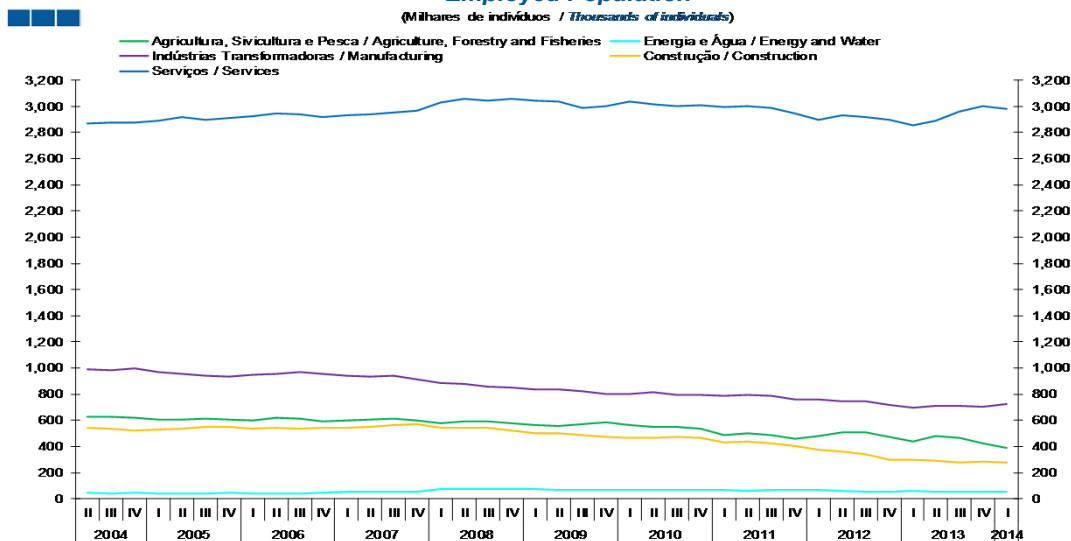


|                 | 2008 |     |      | 2009 |      |      |      | 2010 |      |      |      | 2011 |      |      |      | 2012 |      |      |      | 2013 |      |      |      | 2014 |
|-----------------|------|-----|------|------|------|------|------|------|------|------|------|------|------|------|------|------|------|------|------|------|------|------|------|------|
|                 | II   | III | IV   | I    | II   | III  | IV   | I    | II   | III  | IV   | I    | II   | III  | IV   | I    | II   | III  | IV   | I    | II   | III  | IV   | I    |
| <b>Norte</b>    | 8.2  | 9.1 | 8.7  | 10.1 | 10.5 | 11.6 | 11.9 | 12.5 | 12.2 | 13.2 | 12.7 | 12.7 | 12.6 | 12.7 | 14.1 | 15.1 | 15.0 | 16.3 | 17.7 | 18.5 | 17.1 | 16.5 | 16.4 | 15.8 |
| <b>Centro</b>   | 5.2  | 5.7 | 5.7  | 6.7  | 6.3  | 7.2  | 7.3  | 7.9  | 7.7  | 7.4  | 7.7  | 9.6  | 9.2  | 9.2  | 12.2 | 11.5 | 10.9 | 12.2 | 12.3 | 12.9 | 11.4 | 11.0 | 10.5 | 11.0 |
| <b>Lisboa</b>   | 7.9  | 7.9 | 8.5  | 9.1  | 9.4  | 10.3 | 10.4 | 10.5 | 11.0 | 11.3 | 12.3 | 13.6 | 13.5 | 14.7 | 14.6 | 16.3 | 17.5 | 17.7 | 18.7 | 19.5 | 19.2 | 17.9 | 17.2 | 16.4 |
| <b>Alentejo</b> | 8.5  | 9.1 | 10.0 | 10.2 | 11.3 | 10.2 | 10.4 | 11.1 | 11.8 | 11.6 | 11.2 | 12.4 | 11.8 | 12.3 | 13.0 | 15.3 | 15.0 | 16.2 | 17.3 | 18.4 | 17.3 | 16.1 | 15.6 | 16.0 |
| <b>Algarve</b>  | 7.2  | 6.1 | 6.7  | 10.3 | 9.0  | 10.3 | 11.8 | 13.6 | 12.2 | 12.8 | 14.8 | 16.9 | 14.4 | 13.1 | 17.1 | 19.5 | 17.3 | 14.5 | 19.2 | 20.1 | 16.6 | 13.8 | 17.0 | 18.3 |
| <b>Madeira</b>  | 6.1  | 5.8 | 6.0  | 6.8  | 8.1  | 7.9  | 7.5  | 6.3  | 8.2  | 7.8  | 7.5  | 13.7 | 13.3 | 14.0 | 13.2 | 15.8 | 16.5 | 17.2 | 19.4 | 19.8 | 18.4 | 17.0 | 17.0 | 16.4 |
| <b>Açores</b>   | 5.4  | 5.2 | 5.6  | 6.7  | 7.0  | 6.2  | 7.1  | 7.7  | 6.2  | 6.6  | 7.0  | 9.5  | 9.6  | 11.4 | 14.8 | 13.7 | 15.4 | 15.3 | 16.0 | 16.9 | 16.0 | 17.7 | 17.3 | 18.0 |
| <b>Total</b>    | 7.2  | 7.6 | 7.8  | 8.8  | 9.0  | 9.8  | 10.1 | 10.6 | 10.6 | 10.9 | 11.1 | 12.4 | 12.1 | 12.4 | 13.9 | 14.8 | 14.9 | 15.7 | 16.8 | 17.5 | 16.4 | 15.5 | 15.3 | 15.1 |

### 3. Ramos de Atividade / Industries

Gráfico / Graph 3.1.  
População Empregada  
Employed Population

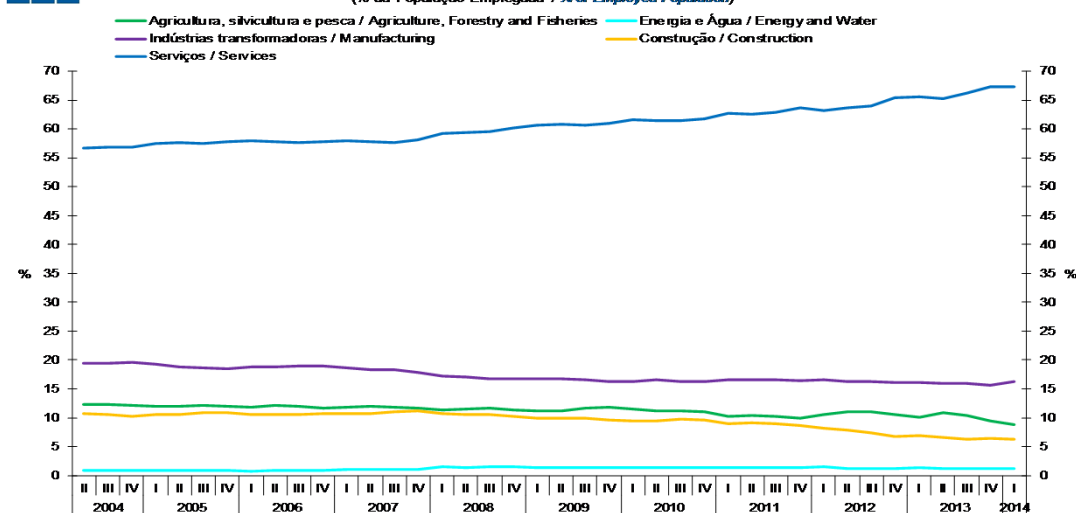
(Milhares de indivíduos / Thousands of individuals)



|   | 2008  |       |       | 2009  |       |       | 2010  |       |       | 2011  |       |       | 2012  |       |       | 2013  |       |       | 2014  |       |       |       |       |       |
|---|-------|-------|-------|-------|-------|-------|-------|-------|-------|-------|-------|-------|-------|-------|-------|-------|-------|-------|-------|-------|-------|-------|-------|-------|
|   | II    | III   | IV    | I     | II    | III   | IV    | I     | II    | III   | IV    | I     | II    | III   | IV    | I     | II    | III   | IV    | I     |       |       |       |       |
| Agricultura, Silvicultura e Pesca / Agriculture, Forestry and Fisheries | 592   | 593   | 577   | 563   | 556   | 572   | 584   | 566   | 548   | 547   | 534   | 490   | 503   | 485   | 458   | 483   | 507   | 505   | 471   | 439   | 483   | 468   | 422   | 392   |
| Energia e Água / Energy and Water                                       | 72    | 75    | 75    | 72    | 66    | 64    | 65    | 65    | 68    | 68    | 66    | 69    | 64    | 68    | 66    | 69    | 58    | 56    | 56    | 61    | 55    | 55    | 55    | 53    |
| Indústrias Transformadoras / Manufacturing                              | 882   | 860   | 853   | 839   | 837   | 819   | 805   | 800   | 817   | 797   | 793   | 790   | 796   | 789   | 758   | 761   | 746   | 742   | 714   | 699   | 709   | 710   | 702   | 724   |
| Construção / Construction   | 544   | 544   | 525   | 500   | 498   | 486   | 474   | 463   | 463   | 474   | 467   | 431   | 438   | 424   | 400   | 373   | 362   | 340   | 297   | 301   | 289   | 279   | 285   | 279   |
| Serviços / Services   | 3,059 | 3,044 | 3,069 | 3,042 | 3,036 | 2,990 | 3,006 | 3,037 | 3,015 | 3,000 | 3,007 | 2,995 | 2,999 | 2,988 | 2,950 | 2,897 | 2,930 | 2,921 | 2,899 | 2,855 | 2,888 | 2,958 | 3,006 | 2,979 |

Gráfico / Graph 3.2.  
Estrutura da População Empregada - 1º Trimestre de 2014  
Employed Population Structure - 1st Quarter of 2014

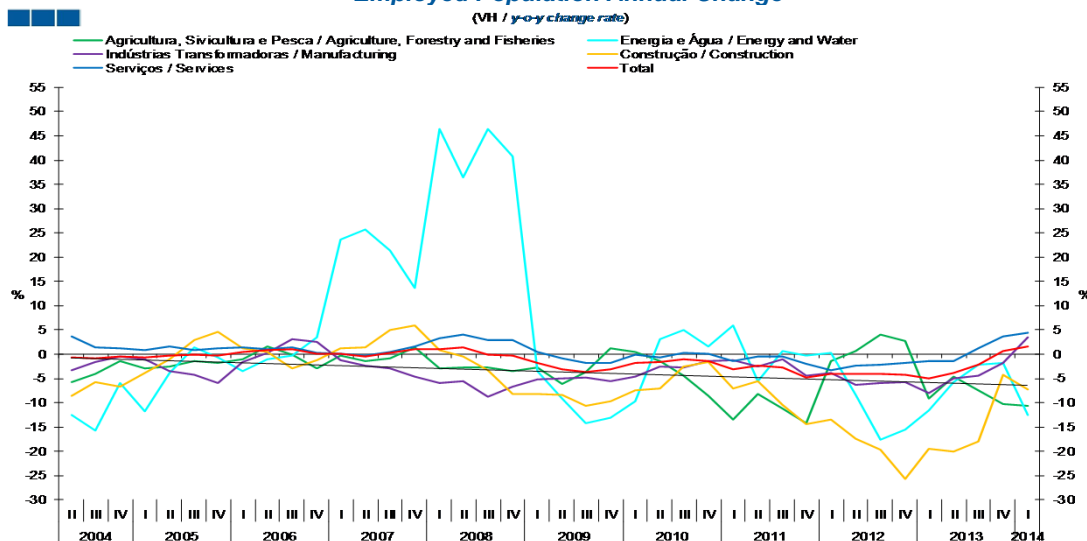
(% da População Empregada / % of Employed Population)



|   | 2008 |      |      | 2009 |      |      | 2010 |      |      | 2011 |      |      | 2012 |      |      | 2013 |      |      | 2014 |      |      |      |      |      |
|---|------|------|------|------|------|------|------|------|------|------|------|------|------|------|------|------|------|------|------|------|------|------|------|------|
|   | II   | III  | IV   | I    | II   | III  | IV   | I    | II   | III  | IV   | I    | II   | III  | IV   | I    | II   | III  | IV   | I    |      |      |      |      |
| Agricultura, Silvicultura e Pesca / Agriculture, Forestry and Fisheries | 11.5 | 11.6 | 11.3 | 11.2 | 11.1 | 11.6 | 11.8 | 11.5 | 11.2 | 11.2 | 11.0 | 10.3 | 10.5 | 10.2 | 9.9  | 10.5 | 11.0 | 11.1 | 10.6 | 10.1 | 10.9 | 10.5 | 9.5  | 8.9  |
| Energia e Água / Energy and Water                                       | 1.4  | 1.5  | 1.5  | 1.4  | 1.3  | 1.3  | 1.3  | 1.3  | 1.4  | 1.4  | 1.4  | 1.4  | 1.3  | 1.4  | 1.4  | 1.5  | 1.3  | 1.2  | 1.3  | 1.4  | 1.2  | 1.2  | 1.2  | 1.2  |
| Indústrias Transformadoras / Manufacturing                              | 17.1 | 16.8 | 16.8 | 16.7 | 16.8 | 16.6 | 16.3 | 16.2 | 16.6 | 16.3 | 16.3 | 16.6 | 16.6 | 16.6 | 16.4 | 16.6 | 16.2 | 16.3 | 16.1 | 16.1 | 16.0 | 15.9 | 15.7 | 16.3 |
| Construção / Construction   | 10.6 | 10.6 | 10.3 | 10.0 | 10.0 | 9.9  | 9.6  | 9.4  | 9.4  | 9.7  | 9.6  | 9.0  | 9.1  | 8.9  | 8.6  | 8.1  | 7.9  | 7.5  | 6.7  | 6.9  | 6.5  | 6.2  | 6.4  | 6.3  |
| Serviços / Services   | 59.4 | 59.5 | 60.1 | 60.6 | 60.8 | 60.6 | 60.9 | 61.6 | 61.4 | 61.4 | 61.8 | 62.7 | 62.5 | 62.9 | 63.7 | 63.2 | 63.7 | 64.0 | 65.3 | 65.6 | 65.3 | 66.2 | 67.3 | 67.3 |

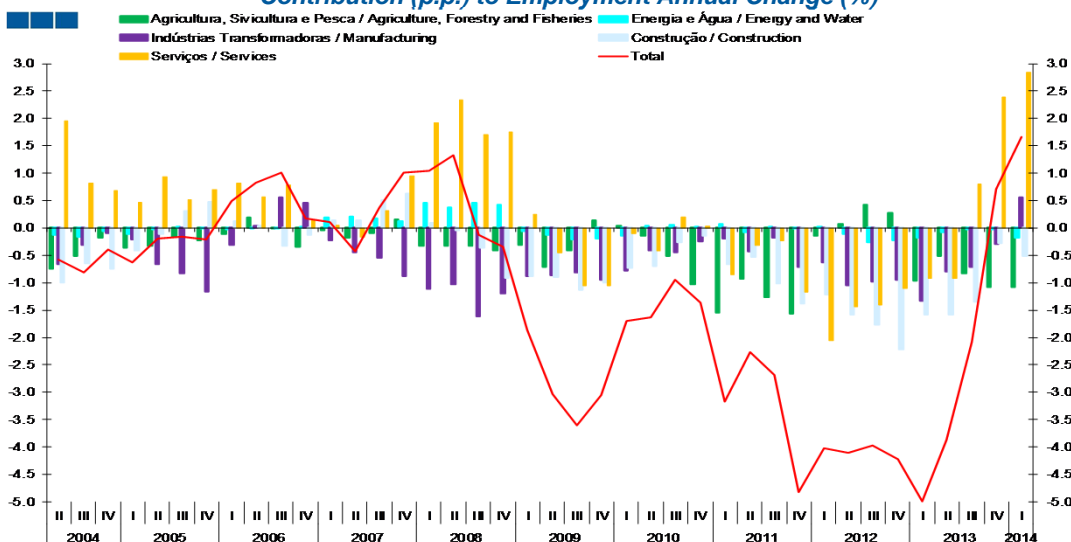
### 3. Ramos de Atividade / Industries

Gráfico / Graph 3.3.  
Variação Homóloga da População Empregada  
Employed Population Annual Change



|   | 2008 |      |      |      | 2009 |       |       |      | 2010 |      |      |       | 2011 |       |       |       | 2012  |       |       |       | 2013  |       |       |       | 2014 |     |    |   |
|---|------|------|------|------|------|-------|-------|------|------|------|------|-------|------|-------|-------|-------|-------|-------|-------|-------|-------|-------|-------|-------|------|-----|----|---|
|   | II   | III  | IV   | I    | II   | III   | IV    | I    | II   | III  | IV   | I     | II   | III   | IV    | I     | II    | III   | IV    | I     | II    | III   | IV    | I     | II   | III | IV | I |
| Agricultura, Silvicultura e Pesca / Agriculture, Forestry and Fisheries | -2.7 | -2.8 | -3.5 | -2.7 | -6.1 | -3.6  | 1.2   | 0.4  | -1.4 | -4.4 | -8.6 | -13.4 | -8.2 | -11.3 | -14.2 | -1.3  | 0.8   | 4.1   | 2.7   | -9.2  | -4.6  | -7.4  | -10.2 | -10.7 |      |     |    |   |
| Energia e Água / Energy and Water                                       | 36.5 | 46.5 | 40.7 | -3.5 | -9.1 | -14.3 | -13.1 | -9.7 | 3.0  | 5.0  | 1.7  | 6.0   | -5.6 | 0.6   | -0.3  | 0.3   | -8.5  | -17.7 | -15.6 | -11.6 | -5.8  | -2.1  | -1.8  | -12.5 |      |     |    |   |
| Indústrias Transformadoras / Manufacturing                              | -5.6 | -8.7 | -6.7 | -5.1 | -5.0 | -4.8  | -5.6  | -4.6 | -2.5 | -2.7 | -1.5 | -1.2  | -2.6 | -1.1  | -4.4  | -3.8  | -6.3  | -5.9  | -5.8  | -8.0  | -4.9  | -4.3  | -1.8  | 3.5   |      |     |    |   |
| Construção / Construction   | -0.5 | -3.3 | -8.1 | -8.3 | -8.4 | -10.6 | -9.7  | -7.4 | -7.0 | -2.6 | -1.5 | -7.0  | -5.5 | -10.5 | -14.3 | -13.4 | -17.4 | -19.7 | -25.7 | -19.5 | -20.0 | -18.0 | -4.2  | -7.3  |      |     |    |   |
| Serviços / Services   | 4.1  | 3.0  | 3.0  | 0.4  | -0.8 | -1.8  | -1.8  | -0.2 | -0.7 | 0.3  | 0.1  | -1.4  | -0.5 | -0.4  | -1.9  | -3.3  | -2.3  | -2.2  | -1.7  | -1.5  | -1.4  | 1.3   | 3.7   | 4.3   |      |     |    |   |
| Total   | 1.3  | -0.1 | -0.3 | -1.9 | -3.0 | -3.6  | -3.1  | -1.7 | -1.6 | -0.9 | -1.4 | -3.2  | -2.3 | -2.7  | -4.8  | -4.0  | -4.1  | -4.0  | -4.2  | -5.0  | -3.9  | -2.1  | 0.7   | 1.7   |      |     |    |   |

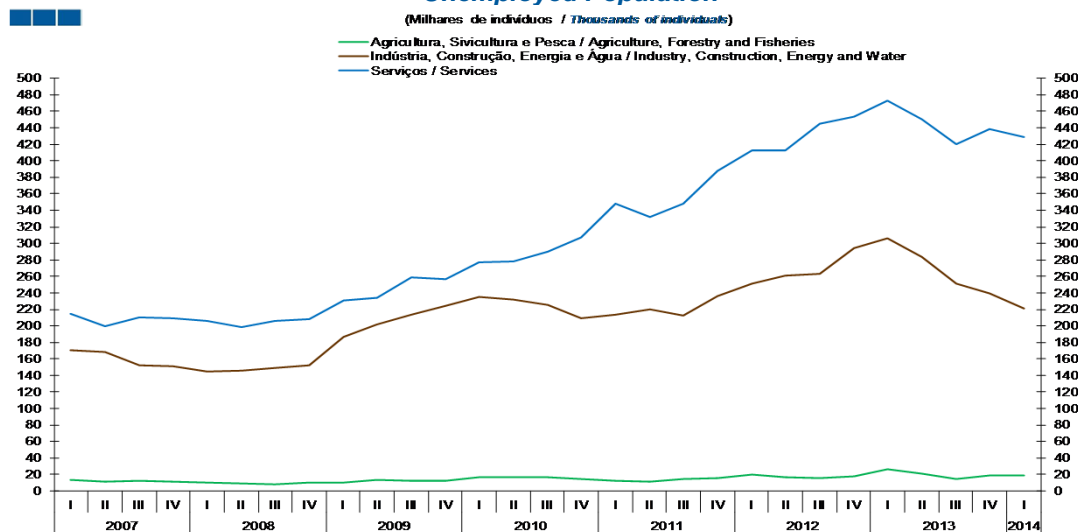
Gráfico / Graph 3.4.  
Contributo (p.p.) para a Variação Homóloga (%) do Emprego  
Contribution (p.p.) to Employment Annual Change (%)



|   | 2008 |      |      |      | 2009 |      |      |      | 2010 |      |      |      | 2011 |      |      |      | 2012 |      |      |      | 2013 |      |      |      | 2014 |     |    |   |
|---|------|------|------|------|------|------|------|------|------|------|------|------|------|------|------|------|------|------|------|------|------|------|------|------|------|-----|----|---|
|   | II   | III  | IV   | I    | II   | III  | IV   | I    | II   | III  | IV   | I    | II   | III  | IV   | I    | II   | III  | IV   | I    | II   | III  | IV   | I    | II   | III | IV | I |
| Agricultura, Silvicultura e Pesca / Agriculture, Forestry and Fisheries | -0.3 | -0.3 | -0.4 | -0.3 | -0.7 | -0.4 | 0.1  | 0.0  | -0.2 | -0.5 | -1.0 | -1.5 | -0.9 | -1.3 | -1.6 | -0.1 | 0.1  | 0.4  | 0.3  | -1.0 | -0.5 | -0.8 | -1.1 | -1.1 |      |     |    |   |
| Energia e Água / Energy and Water                                       | 0.4  | 0.5  | 0.4  | -0.1 | -0.1 | -0.2 | -0.2 | -0.1 | 0.0  | 0.1  | 0.0  | 0.1  | -0.1 | 0.0  | 0.0  | -0.1 | -0.3 | -0.2 | -0.2 | -0.1 | 0.0  | 0.0  | 0.0  | -0.2 |      |     |    |   |
| Indústrias Transformadoras / Manufacturing                              | -1.0 | -1.6 | -1.2 | -0.9 | -0.9 | -0.8 | -0.9 | -0.8 | -0.4 | -0.4 | -0.2 | -0.2 | -0.4 | -0.2 | -0.7 | -0.6 | -1.0 | -1.0 | -0.9 | -1.3 | -0.8 | -0.7 | -0.3 | 0.6  |      |     |    |   |
| Construção / Construction   | 0.0  | -0.4 | -0.9 | -0.9 | -0.9 | -1.1 | -1.0 | -0.7 | -0.7 | -0.3 | -0.1 | -0.7 | -0.5 | -1.0 | -1.4 | -1.2 | -1.6 | -1.8 | -2.2 | -1.6 | -1.6 | -1.3 | -0.3 | -0.5 |      |     |    |   |
| Serviços / Services   | 2.3  | 1.7  | 1.7  | 0.3  | -0.5 | -1.1 | -1.1 | -0.1 | -0.4 | 0.2  | 0.0  | -0.8 | -0.3 | -0.2 | -1.2 | -2.1 | -1.4 | -1.4 | -1.1 | -0.9 | -0.9 | 0.8  | 2.4  | 2.8  |      |     |    |   |
| Total   | 1.3  | -0.1 | -0.3 | -1.9 | -3.0 | -3.6 | -3.1 | -1.7 | -1.6 | -0.9 | -1.4 | -3.2 | -2.3 | -2.7 | -4.8 | -4.0 | -4.1 | -4.0 | -4.2 | -5.0 | -3.9 | -2.1 | 0.7  | 1.7  |      |     |    |   |

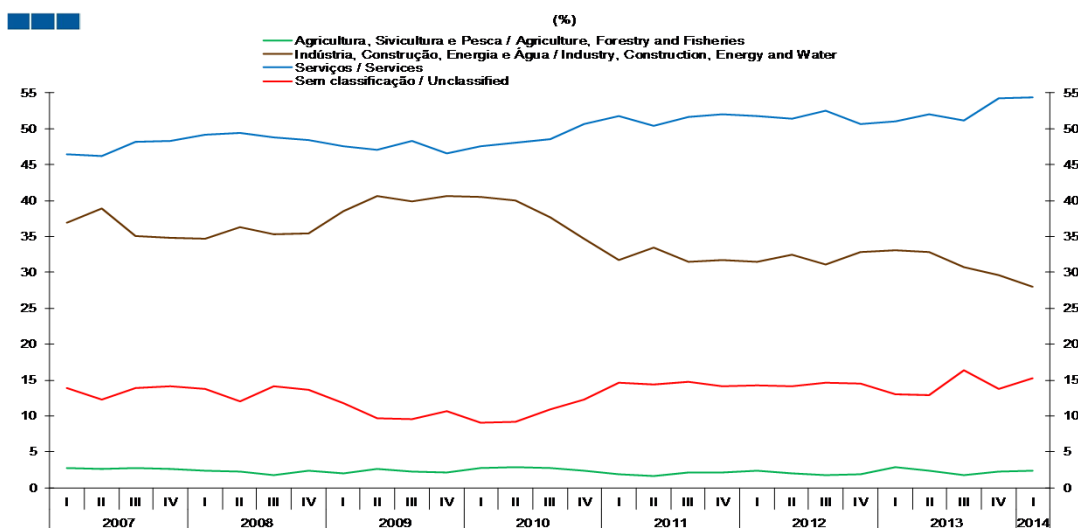
### 3. Ramos de Atividade / Industries

Gráfico / Graph 3.5.  
População Desempregada  
Unemployed Population



|  | 2008 |     |     | 2009 |     |     |     | 2010 |     |     |     | 2011 |     |     |     | 2012 |     |     |     | 2013 |     |     |     | 2014 |
|--|------|-----|-----|------|-----|-----|-----|------|-----|-----|-----|------|-----|-----|-----|------|-----|-----|-----|------|-----|-----|-----|------|
|  | II   | III | IV  | I    | II  | III | IV  | I    | II  | III | IV  | I    | II  | III | IV  | I    | II  | III | IV  | I    | II  | III | IV  | I    |
| Agricultura, Silvicultura e Pesca / Agriculture, Forestry and Fisheries          | 9    | 8   | 10  | 10   | 13  | 12  | 12  | 16   | 17  | 17  | 15  | 13   | 11  | 14  | 16  | 20   | 17  | 15  | 17  | 26   | 21  | 15  | 19  | 19   |
| Indústria, Construção, Energia e Água / Industry, Construction, Energy and Water | 146  | 149 | 152 | 187  | 202 | 214 | 224 | 236  | 232 | 225 | 210 | 213  | 220 | 212 | 236 | 251  | 261 | 263 | 295 | 306  | 284 | 252 | 239 | 221  |
| Serviços / Services  | 198  | 206 | 208 | 231  | 234 | 259 | 257 | 277  | 278 | 290 | 307 | 348  | 332 | 348 | 388 | 412  | 412 | 444 | 454 | 473  | 450 | 420 | 439 | 428  |

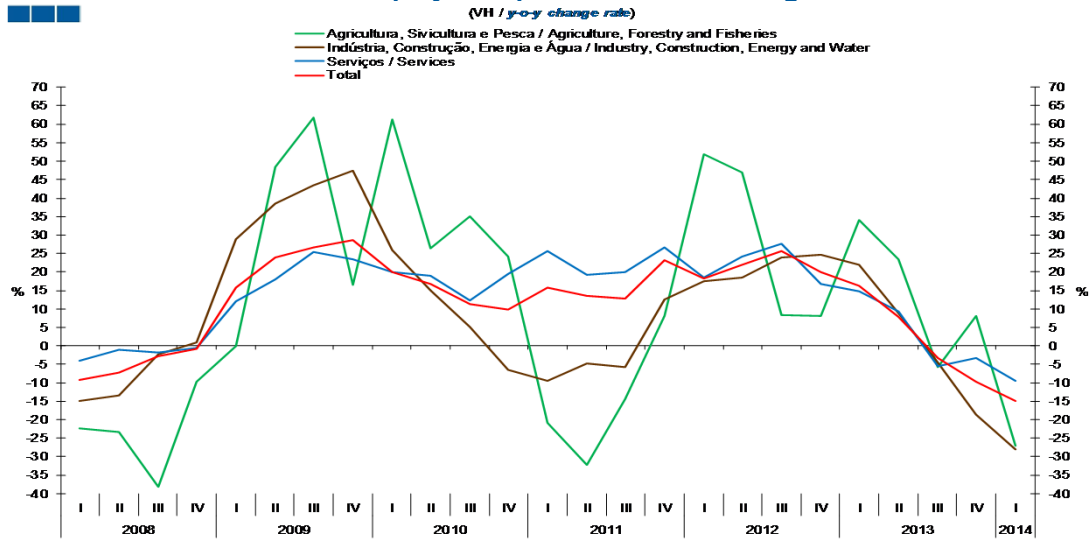
Gráfico / Graph 3.6.  
Estrutura da População Desempregada - 1º Trimestre de 2014  
Unemployed Population Structure - 1st Quarter of 2014



|  | 2008 |      |      | 2009 |      |      |      | 2010 |      |      |      | 2011 |      |      |      | 2012 |      |      |      | 2013 |      |      |      | 2014 |
|--|------|------|------|------|------|------|------|------|------|------|------|------|------|------|------|------|------|------|------|------|------|------|------|------|
|  | II   | III  | IV   | I    | II   | III  | IV   | I    | II   | III  | IV   | I    | II   | III  | IV   | I    | II   | III  | IV   | I    | II   | III  | IV   | I    |
| Agricultura, Silvicultura e Pesca / Agriculture, Forestry and Fisheries          | 2.2  | 1.8  | 2.4  | 2.1  | 2.7  | 2.3  | 2.2  | 2.8  | 2.9  | 2.8  | 2.5  | 1.9  | 1.7  | 2.1  | 2.2  | 2.5  | 2.1  | 1.8  | 1.9  | 2.8  | 2.4  | 1.8  | 2.3  | 2.4  |
| Indústria, Construção, Energia e Água / Industry, Construction, Energy and Water | 36.3 | 35.3 | 35.4 | 38.6 | 40.6 | 39.9 | 40.6 | 40.5 | 40.0 | 37.7 | 34.6 | 31.7 | 33.5 | 31.5 | 31.7 | 31.5 | 32.5 | 31.1 | 32.9 | 33.0 | 32.8 | 30.7 | 29.6 | 28.0 |
| Serviços / Services  | 49.4 | 48.7 | 48.5 | 47.5 | 47.1 | 48.2 | 46.5 | 47.6 | 48.0 | 48.6 | 50.7 | 51.7 | 50.4 | 51.6 | 52.0 | 51.7 | 51.3 | 52.5 | 50.6 | 51.1 | 52.0 | 51.2 | 54.3 | 54.3 |
| Sem Classificação / Unclassified   | 12.1 | 14.2 | 13.7 | 11.8 | 9.7  | 9.5  | 10.7 | 9.1  | 9.2  | 11.0 | 12.3 | 14.7 | 14.5 | 14.8 | 14.2 | 14.3 | 14.1 | 14.6 | 14.6 | 13.1 | 12.9 | 16.4 | 13.8 | 15.2 |

### 3. Ramos de Atividade / Industries

Gráfico / Graph 3.7.  
Variação Homóloga da População Desempregada  
Unemployed Population Annual Change

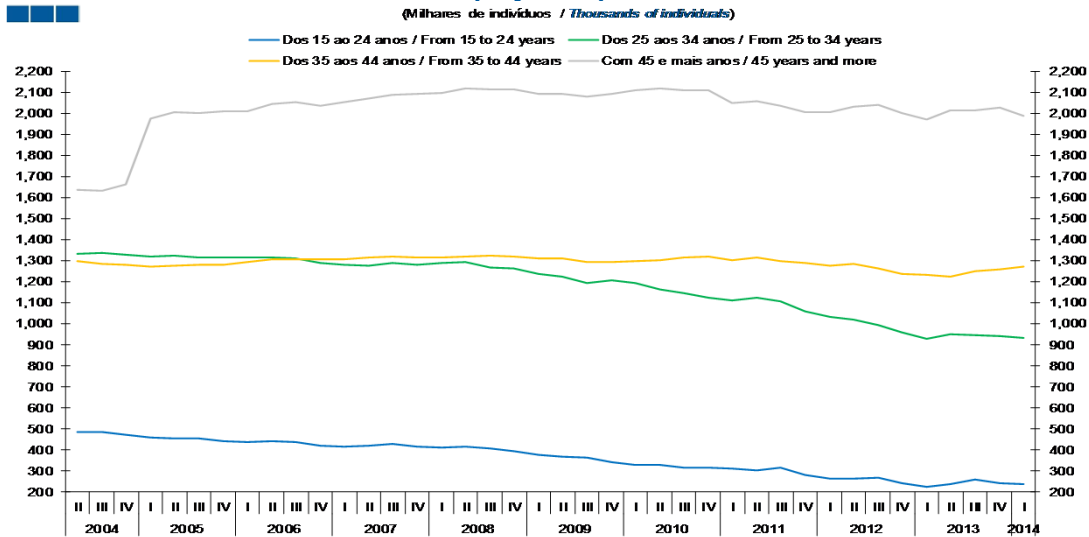


|   | 2008 | 2009 |      |      |      | 2010 |      |      |      | 2011  |       |       |      | 2012 |      |      |      | 2013 |      |      |       | 2014  |
|---|------|------|------|------|------|------|------|------|------|-------|-------|-------|------|------|------|------|------|------|------|------|-------|-------|
|   | IV   | I    | II   | III  | IV   | I    | II   | III  | IV   | I     | II    | III   | IV   | I    | II   | III  | IV   | I    | II   | III  | IV    | I     |
| Agricultura, Silvicultura e Pesca /<br>Agriculture, Forestry and Fisheries          | -9.6 | 0.0  | 48.3 | 61.8 | 16.5 | 61.4 | 26.5 | 35.0 | 24.2 | -20.9 | -32.3 | -14.5 | 8.1  | 51.9 | 46.9 | 8.5  | 8.1  | 34.2 | 23.5 | -5.8 | 8.0   | -27.0 |
| Indústria, Construção, Energia e Água /<br>Industry, Construction, Energy and Water | 0.9  | 28.9 | 38.5 | 43.4 | 47.3 | 25.9 | 15.0 | 5.2  | -6.4 | -9.4  | -4.9  | -5.7  | 12.6 | 17.5 | 18.4 | 24.0 | 24.7 | 22.0 | 8.8  | -4.4 | -18.7 | -27.9 |
| Serviços / Services   | -0.5 | 11.9 | 18.0 | 25.5 | 23.4 | 20.1 | 19.1 | 12.2 | 19.5 | 25.7  | 19.2  | 20.0  | 26.6 | 18.4 | 24.3 | 27.6 | 16.8 | 14.8 | 9.2  | -5.6 | -3.3  | -9.5  |
| Total   | -0.8 | 15.9 | 23.9 | 26.8 | 28.5 | 20.0 | 16.7 | 11.4 | 9.8  | 15.7  | 13.6  | 12.9  | 23.2 | 18.3 | 22.0 | 25.6 | 20.1 | 16.3 | 7.8  | -3.2 | -9.8  | -15.0 |

## 4. Faixa Etária / Age Groups

Gráfico / Graph 4.1.  
População Empregada  
Employed Population

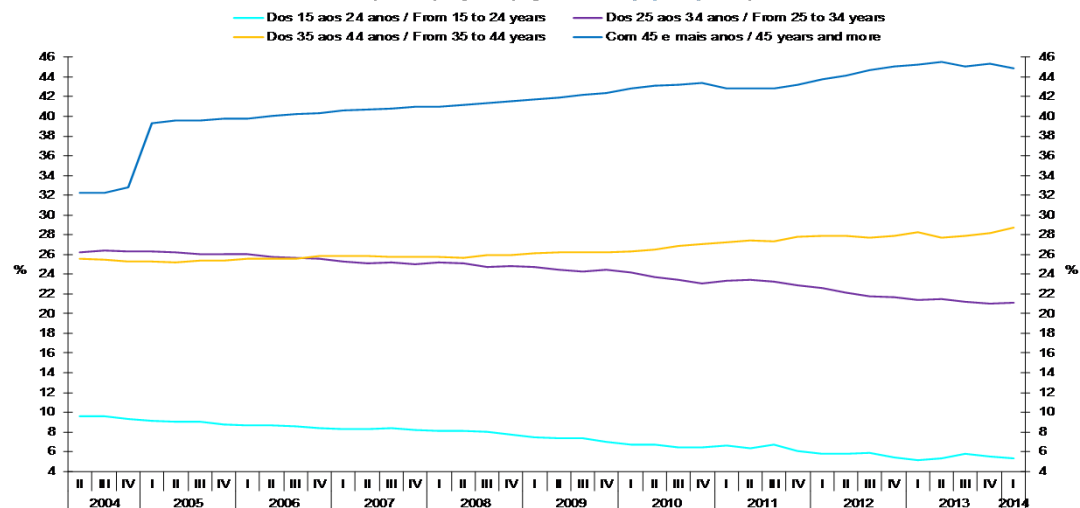
(Milhares de indivíduos / Thousands of individuals)



|                                  | 2008  |       |       | 2009  |       |       | 2010  |       |       | 2011  |       |       | 2012  |       |       | 2013  |       |       | 2014  |       |       |       |       |       |
|----------------------------------|-------|-------|-------|-------|-------|-------|-------|-------|-------|-------|-------|-------|-------|-------|-------|-------|-------|-------|-------|-------|-------|-------|-------|-------|
|                                  | II    | III   | IV    | I     | II    | III   | IV    | I     | II    | III   | IV    | I     | II    | III   | IV    | I     | II    | III   | IV    | I     |       |       |       |       |
| 15 - 24 Anos / 15 - 24 Years old | 417   | 408   | 395   | 375   | 368   | 365   | 344   | 332   | 330   | 316   | 315   | 314   | 305   | 317   | 282   | 265   | 265   | 269   | 242   | 224   | 237   | 259   | 245   | 236   |
| 25 - 34 Anos / 25 - 34 Years old | 1,292 | 1,267 | 1,264 | 1,238 | 1,222 | 1,195 | 1,208 | 1,192 | 1,162 | 1,145 | 1,124 | 1,112 | 1,123 | 1,105 | 1,060 | 1,035 | 1,020 | 994   | 959   | 929   | 949   | 948   | 941   | 934   |
| 35 - 44 Anos / 35 - 44 Years old | 1,321 | 1,325 | 1,318 | 1,310 | 1,310 | 1,291 | 1,291 | 1,297 | 1,301 | 1,313 | 1,318 | 1,302 | 1,315 | 1,297 | 1,287 | 1,277 | 1,285 | 1,263 | 1,237 | 1,230 | 1,226 | 1,248 | 1,257 | 1,271 |
| + 45 Anos / + 45 Years old       | 2,119 | 2,116 | 2,113 | 2,093 | 2,093 | 2,080 | 2,092 | 2,111 | 2,118 | 2,111 | 2,111 | 2,047 | 2,056 | 2,034 | 2,003 | 2,006 | 2,032 | 2,039 | 1,999 | 1,971 | 2,013 | 2,015 | 2,026 | 1,986 |

Gráfico / Graph 4.2.  
Estrutura da População Empregada - 1º Trimestre de 2014  
Employed Population Structure - 1st Quarter of 2014

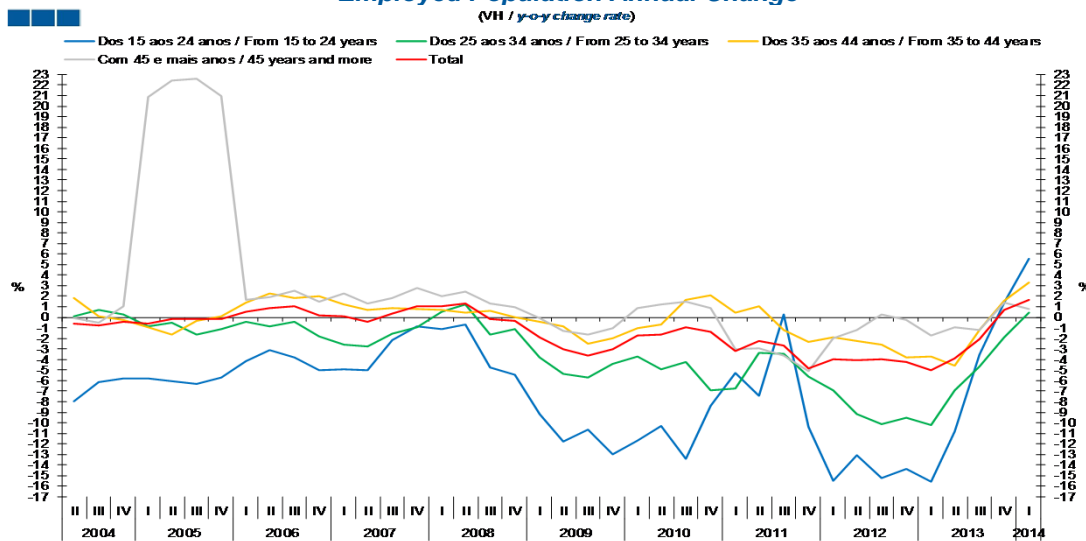
(% da População Empregada / % of Employed Population)



|                                  | 2008 |      |      | 2009 |      |      | 2010 |      |      | 2011 |      |      | 2012 |      |      | 2013 |      |      | 2014 |      |      |      |      |      |
|----------------------------------|------|------|------|------|------|------|------|------|------|------|------|------|------|------|------|------|------|------|------|------|------|------|------|------|
|                                  | II   | III  | IV   | I    | II   | III  | IV   | I    | II   | III  | IV   | I    | II   | III  | IV   | I    | II   | III  | IV   | I    |      |      |      |      |
| 15 - 24 Anos / 15 - 24 Years old | 8.1  | 8.0  | 7.8  | 7.5  | 7.4  | 7.4  | 7.0  | 6.7  | 6.7  | 6.5  | 6.5  | 6.6  | 6.4  | 6.7  | 6.1  | 5.8  | 5.8  | 5.9  | 5.4  | 5.1  | 5.3  | 5.8  | 5.5  | 5.3  |
| 25 - 34 Anos / 25 - 34 Years old | 25.1 | 24.8 | 24.8 | 24.7 | 24.5 | 24.2 | 24.5 | 24.2 | 23.7 | 23.4 | 23.1 | 23.3 | 23.4 | 23.3 | 22.9 | 22.6 | 22.2 | 21.8 | 21.6 | 21.3 | 21.5 | 21.2 | 21.1 | 21.1 |
| 35 - 44 Anos / 35 - 44 Years old | 25.7 | 25.9 | 25.9 | 26.1 | 26.2 | 26.2 | 26.3 | 26.5 | 26.9 | 27.1 | 27.3 | 27.4 | 27.3 | 27.8 | 27.9 | 27.9 | 27.7 | 27.9 | 27.9 | 28.3 | 27.7 | 27.9 | 28.1 | 28.7 |
| + 45 Anos / + 45 Years old       | 41.2 | 41.4 | 41.5 | 41.7 | 41.9 | 42.2 | 42.4 | 42.8 | 43.1 | 43.2 | 43.4 | 42.9 | 42.8 | 42.8 | 43.2 | 43.8 | 44.1 | 44.7 | 45.1 | 45.3 | 45.5 | 45.1 | 45.3 | 44.9 |

## 4. Faixa Etária / Age Groups

Gráfico / Graph 4.3.  
Variação Homóloga da População Empregada  
Employed Population Annual Change

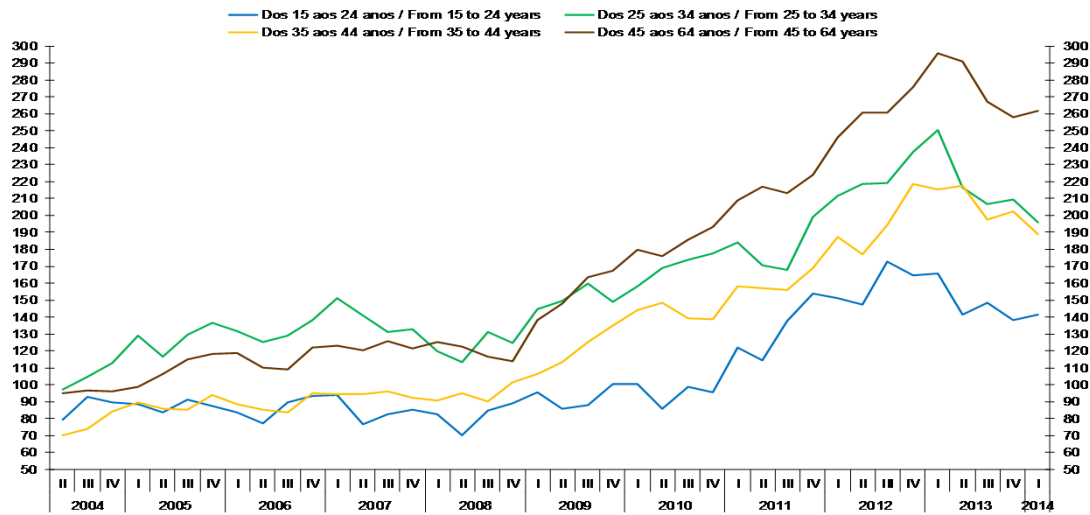


|                                  | 2008 |      |      | 2009 |       |       |       | 2010  |       |       |      | 2011 |      |      |       | 2012  |       |       |       | 2013  |       |      |      | 2014 |
|----------------------------------|------|------|------|------|-------|-------|-------|-------|-------|-------|------|------|------|------|-------|-------|-------|-------|-------|-------|-------|------|------|------|
|                                  | II   | III  | IV   | I    | II    | III   | IV    | I     | II    | III   | IV   | I    | II   | III  | IV    | I     | II    | III   | IV    | I     | II    | III  | IV   | I    |
| 15 - 24 Anos / 15 - 24 Years old | -0.7 | -4.7 | -5.5 | -9.2 | -11.8 | -10.7 | -13.0 | -11.7 | -10.3 | -13.4 | -8.4 | -5.3 | -7.4 | 0.3  | -10.4 | -15.5 | -13.1 | -15.2 | -14.4 | -15.6 | -10.8 | -3.6 | 1.4  | 5.5  |
| 25 - 34 Anos / 25 - 34 Years old | 1.2  | -1.6 | -1.1 | -3.8 | -5.4  | -5.7  | -4.4  | -3.7  | -4.9  | -4.2  | -7.0 | -6.7 | -3.4 | -3.4 | -5.7  | -6.9  | -9.2  | -10.1 | -9.5  | -10.2 | -7.0  | -4.6 | -1.9 | 0.4  |
| 35 - 44 Anos / 35 - 44 Years old | 0.5  | 0.6  | 0.0  | -0.4 | -0.8  | -2.5  | -2.0  | -1.0  | -0.7  | 1.7   | 2.1  | 0.4  | 1.1  | -1.2 | -2.4  | -1.9  | -2.3  | -2.6  | -3.8  | -3.7  | -4.6  | -1.2 | 1.6  | 3.3  |
| + 45 Anos / + 45 Years old       | 2.4  | 1.3  | 0.9  | -0.1 | -1.3  | -1.7  | -1.0  | 0.9   | 1.2   | 1.5   | 0.9  | -3.0 | -2.9 | -3.6 | -5.1  | -2.0  | -1.2  | 0.2   | -0.2  | -1.7  | -0.9  | -1.2 | 1.4  | 0.8  |
| Total                            | 1.3  | -0.1 | -0.3 | -1.9 | -3.0  | -3.6  | -3.1  | -1.7  | -1.6  | -0.9  | -1.4 | -3.2 | -2.3 | -2.7 | -4.8  | -4.0  | -4.1  | -4.0  | -4.2  | -5.0  | -3.9  | -2.1 | 0.7  | 1.7  |

## 4. Faixa Etária / Age Groups

Gráfico / Graph 4.4.  
População Desempregada  
Unemployed Population

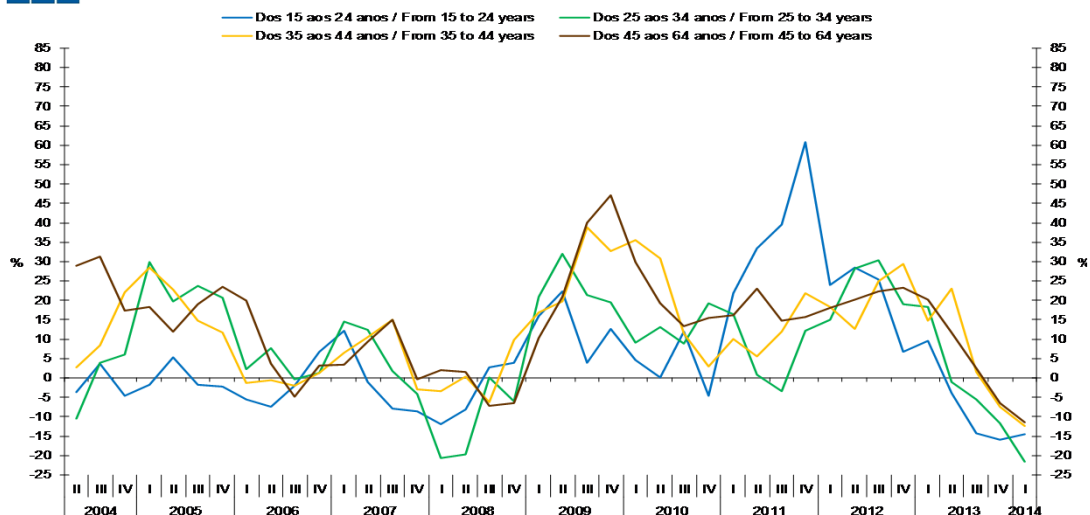
(Milhares de indivíduos / Thousands of individuals)



|                                  | 2008 |     |     | 2009 |     |     | 2010 |     |     | 2011 |     |     | 2012 |     |     | 2013 |     |     | 2014 |     |     |     |     |     |
|----------------------------------|------|-----|-----|------|-----|-----|------|-----|-----|------|-----|-----|------|-----|-----|------|-----|-----|------|-----|-----|-----|-----|-----|
|                                  | II   | III | IV  | I    | II  | III | IV   | I   | II  | III  | IV  | I   | II   | III | IV  | I    | II  | III | IV   | I   |     |     |     |     |
| 15 - 24 Anos / 15 - 24 Years old | 70   | 85  | 89  | 96   | 86  | 88  | 100  | 100 | 86  | 99   | 96  | 122 | 115  | 138 | 154 | 151  | 147 | 173 | 164  | 166 | 141 | 148 | 138 | 142 |
| 25 - 34 Anos / 25 - 34 Years old | 113  | 131 | 125 | 145  | 150 | 160 | 149  | 158 | 169 | 174  | 178 | 184 | 171  | 168 | 199 | 212  | 219 | 219 | 237  | 250 | 216 | 207 | 210 | 196 |
| 35 - 44 Anos / 35 - 44 Years old | 95   | 90  | 102 | 106  | 114 | 125 | 135  | 144 | 149 | 139  | 139 | 158 | 157  | 156 | 169 | 188  | 177 | 195 | 219  | 215 | 218 | 198 | 202 | 189 |
| 45 - 65 Anos / 45 - 65 Years old | 122  | 117 | 114 | 138  | 148 | 164 | 167  | 180 | 176 | 186  | 193 | 209 | 217  | 213 | 224 | 246  | 261 | 261 | 276  | 296 | 291 | 267 | 258 | 262 |

Gráfico / Graph 4.5.  
Variação Homóloga da População Desempregada  
Unemployed Population Annual Change

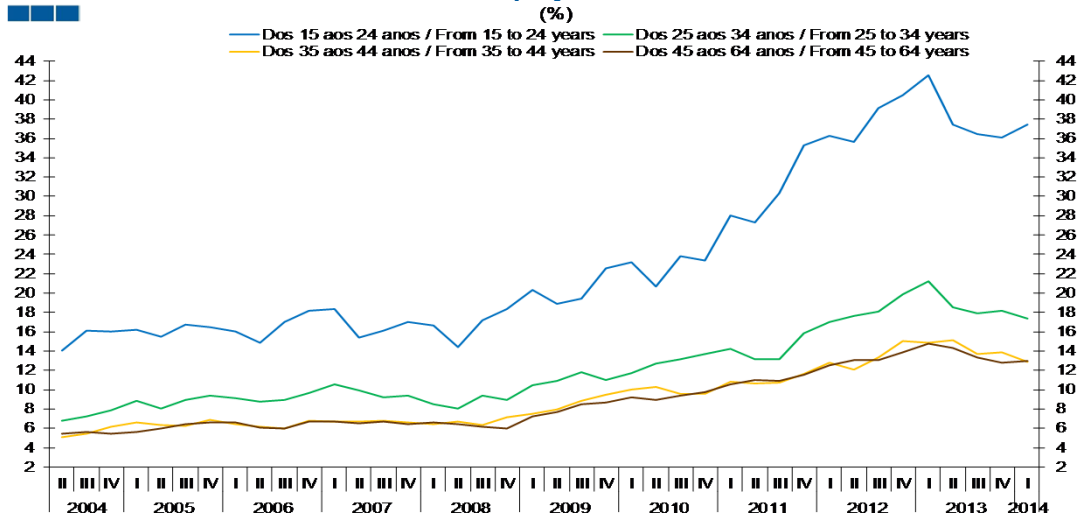
(VH / y-o-y change rate)



|                                  | 2008  |      |      | 2009 |      |      | 2010 |      |      | 2011 |      |      | 2012 |      |      | 2013 |      |      | 2014 |      |      |       |       |       |
|----------------------------------|-------|------|------|------|------|------|------|------|------|------|------|------|------|------|------|------|------|------|------|------|------|-------|-------|-------|
|                                  | II    | III  | IV   | I    | II   | III  | IV   | I    | II   | III  | IV   | I    | II   | III  | IV   | I    | II   | III  | IV   | I    |      |       |       |       |
| 15 - 24 Anos / 15 - 24 Years old | -8.2  | 2.8  | 4.0  | 15.9 | 22.2 | 3.9  | 12.7 | 4.7  | 0.1  | 12.0 | -4.5 | 21.8 | 33.4 | 39.6 | 60.9 | 23.9 | 28.4 | 25.4 | 6.7  | 9.5  | -3.9 | -14.2 | -15.9 | -14.4 |
| 25 - 34 Anos / 25 - 34 Years old | -19.7 | 0.1  | -6.0 | 21.0 | 32.0 | 21.5 | 19.6 | 9.2  | 13.2 | 9.0  | 19.2 | 16.3 | 0.8  | -3.5 | 12.2 | 15.0 | 28.2 | 30.4 | 19.0 | 18.3 | -1.1 | -5.6  | -11.7 | -21.7 |
| 35 - 44 Anos / 35 - 44 Years old | 0.4   | -6.2 | 9.8  | 16.8 | 19.7 | 38.7 | 32.7 | 35.6 | 30.9 | 11.4 | 2.9  | 9.9  | 5.5  | 11.9 | 21.8 | 18.4 | 12.7 | 24.8 | 29.5 | 14.7 | 23.1 | 1.6   | -7.5  | -12.3 |
| 45 - 65 Anos / 45 - 65 Years old | 1.6   | -7.2 | -6.5 | 10.3 | 20.8 | 40.1 | 47.1 | 29.9 | 19.1 | 13.5 | 15.5 | 16.3 | 23.0 | 14.8 | 15.8 | 18.0 | 20.3 | 22.3 | 23.1 | 20.1 | 11.6 | 2.5   | -6.4  | -11.5 |

## 4. Faixa Etária / Age Groups

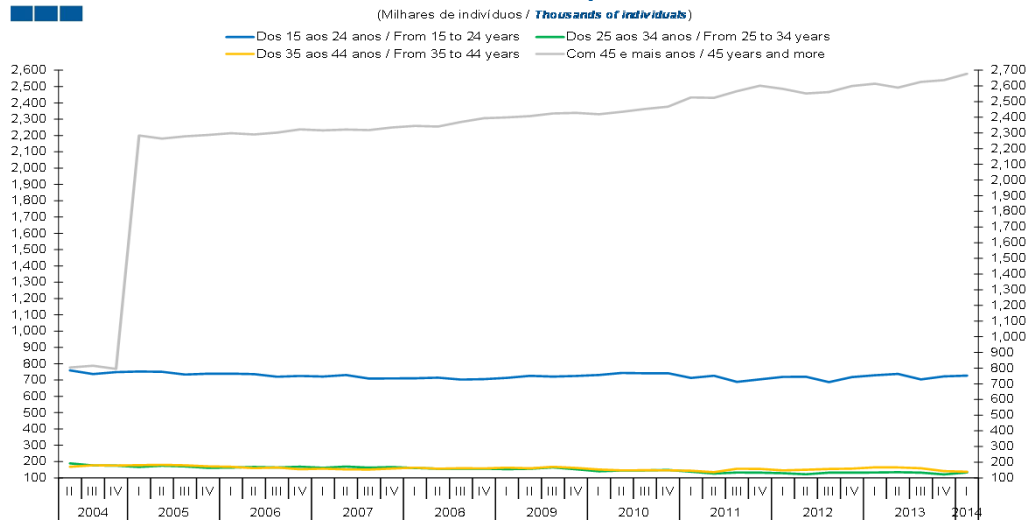
Gráfico / Graph 4.6.  
Taxa de desemprego  
Unemployment Rate  
(%)



|                                  | 2008 |      |      | 2009 |      |      |      | 2010 |      |      |      | 2011 |      |      |      | 2012 |      |      |      | 2013 |      |      |      | 2014 |
|----------------------------------|------|------|------|------|------|------|------|------|------|------|------|------|------|------|------|------|------|------|------|------|------|------|------|------|
|                                  | II   | III  | IV   | I    | II   | III  | IV   | I    | II   | III  | IV   | I    | II   | III  | IV   | I    | II   | III  | IV   | I    | II   | III  | IV   | I    |
| 15 - 24 Anos / 15 - 24 Years old | 14.4 | 17.2 | 18.4 | 20.3 | 18.9 | 19.5 | 22.6 | 23.2 | 20.7 | 23.8 | 23.3 | 28.0 | 27.3 | 30.3 | 35.3 | 36.3 | 35.7 | 39.1 | 40.5 | 42.5 | 37.4 | 36.4 | 36.1 | 37.5 |
| 25 - 34 Anos / 25 - 34 Years old | 8.1  | 9.4  | 9.0  | 10.5 | 10.9 | 11.8 | 11.0 | 11.7 | 12.7 | 13.2 | 13.7 | 14.2 | 13.2 | 13.2 | 15.8 | 17.0 | 17.6 | 18.1 | 19.8 | 21.2 | 18.6 | 17.9 | 18.2 | 17.4 |
| 35 - 44 Anos / 35 - 44 Years old | 6.7  | 6.4  | 7.2  | 7.5  | 8.0  | 8.8  | 9.5  | 10.0 | 10.3 | 9.6  | 9.5  | 10.8 | 10.7 | 10.7 | 11.6 | 12.8 | 12.1 | 13.3 | 15.0 | 14.9 | 15.1 | 13.7 | 13.9 | 12.9 |
| 45 - 65 Anos / 45 - 65 Years old | 6.4  | 6.1  | 6.0  | 7.2  | 7.7  | 8.5  | 8.7  | 9.2  | 8.9  | 9.4  | 9.7  | 10.6 | 11.0 | 10.9 | 11.5 | 12.5 | 13.1 | 13.0 | 13.9 | 14.8 | 14.4 | 13.3 | 12.8 | 13.0 |

## 4. Faixa Etária / Age Groups

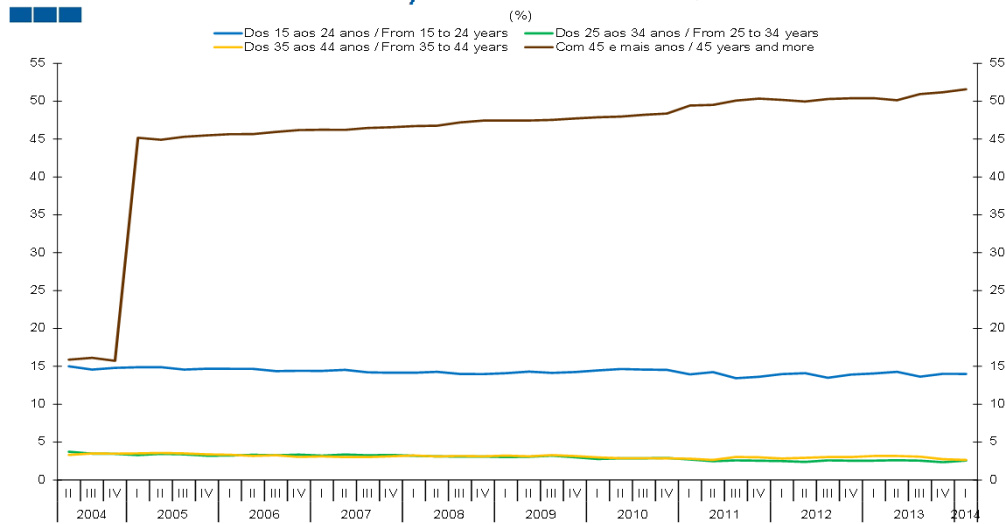
Gráfico / Graph 4.7.  
População Inativa  
Inactive Population



Fonte / Source: INE

|                                  | 2008  |       |       | 2009  |       |       | 2010  |       |       | 2011  |       |       | 2012  |       |       | 2013  |       |       | 2014  |       |       |       |       |       |
|----------------------------------|-------|-------|-------|-------|-------|-------|-------|-------|-------|-------|-------|-------|-------|-------|-------|-------|-------|-------|-------|-------|-------|-------|-------|-------|
|                                  | II    | III   | IV    | I     | II    | III   | IV    | I     | II    | III   | IV    | I     | II    | III   | IV    | I     | II    | III   | IV    | I     |       |       |       |       |
| 15 - 24 Anos / 15 - 24 Years old | 715   | 703   | 706   | 713   | 726   | 721   | 725   | 731   | 744   | 742   | 742   | 713   | 726   | 689   | 704   | 719   | 720   | 688   | 718   | 730   | 738   | 704   | 722   | 727   |
| 25 - 34 Anos / 25 - 34 Years old | 156   | 155   | 157   | 153   | 156   | 164   | 153   | 140   | 146   | 146   | 148   | 138   | 127   | 133   | 132   | 129   | 122   | 132   | 132   | 133   | 135   | 132   | 121   | 133   |
| 35 - 44 Anos / 35 - 44 Years old | 156   | 159   | 158   | 163   | 158   | 168   | 161   | 151   | 146   | 147   | 146   | 144   | 135   | 156   | 155   | 146   | 150   | 155   | 157   | 165   | 164   | 159   | 142   | 138   |
| + 45 Anos / + 45 Years old       | 2,341 | 2,370 | 2,394 | 2,399 | 2,407 | 2,424 | 2,428 | 2,420 | 2,435 | 2,453 | 2,468 | 2,527 | 2,524 | 2,566 | 2,601 | 2,581 | 2,552 | 2,561 | 2,600 | 2,614 | 2,589 | 2,626 | 2,637 | 2,678 |

Gráfico / Graph 4.8.  
Estrutura da População Inativa - 1º Trimestre de 2014  
Inactive Population Structure - 1st Quarter of 2014



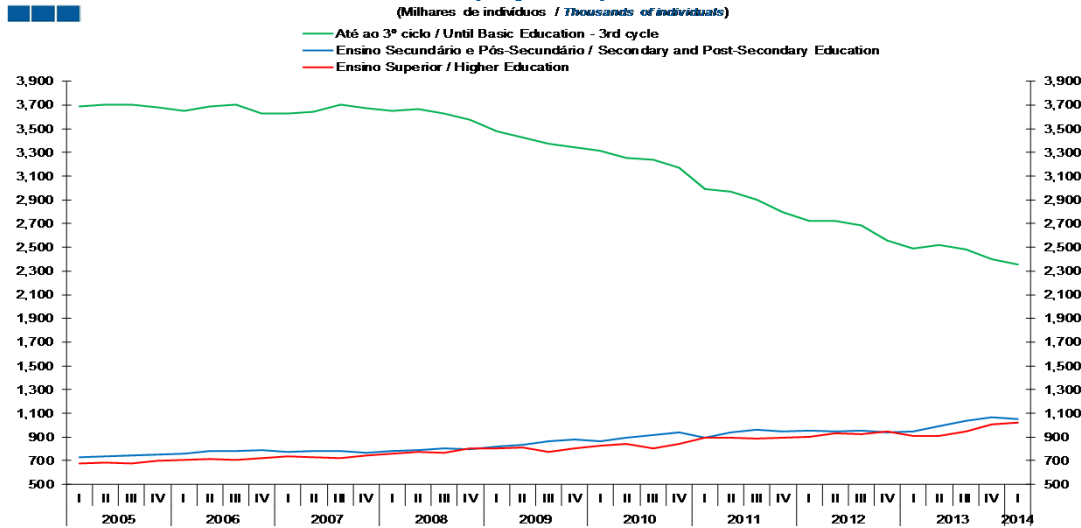
Fonte / Source: INE

|                                  | 2008 |      |      | 2009 |      |      | 2010 |      |      | 2011 |      |      | 2012 |      |      | 2013 |      |      | 2014 |      |      |      |      |      |
|----------------------------------|------|------|------|------|------|------|------|------|------|------|------|------|------|------|------|------|------|------|------|------|------|------|------|------|
|                                  | II   | III  | IV   | I    | II   | III  | IV   | I    | II   | III  | IV   | I    | II   | III  | IV   | I    | II   | III  | IV   | I    |      |      |      |      |
| 15 - 24 Anos / 15 - 24 Years old | 14.3 | 14.0 | 14.0 | 14.1 | 14.3 | 14.1 | 14.3 | 14.5 | 14.7 | 14.6 | 14.5 | 13.9 | 14.2 | 13.4 | 13.6 | 14.0 | 14.1 | 13.5 | 13.9 | 14.1 | 14.3 | 13.7 | 14.0 | 14.0 |
| 25 - 34 Anos / 25 - 34 Years old | 3.1  | 3.1  | 3.1  | 3.0  | 3.1  | 3.2  | 3.0  | 2.8  | 2.9  | 2.9  | 2.9  | 2.7  | 2.5  | 2.6  | 2.6  | 2.5  | 2.4  | 2.6  | 2.6  | 2.6  | 2.6  | 2.6  | 2.4  | 2.6  |
| 35 - 44 Anos / 35 - 44 Years old | 3.1  | 3.2  | 3.1  | 3.2  | 3.1  | 3.3  | 3.2  | 3.0  | 2.9  | 2.9  | 2.9  | 2.8  | 2.6  | 3.0  | 3.0  | 2.8  | 2.9  | 3.0  | 3.0  | 3.2  | 3.2  | 3.1  | 2.8  | 2.7  |
| + 45 Anos / + 45 Years old       | 46.8 | 47.2 | 47.4 | 47.4 | 47.5 | 47.5 | 47.7 | 47.9 | 48.0 | 48.2 | 48.4 | 49.4 | 49.5 | 50.1 | 50.3 | 50.2 | 50.0 | 50.3 | 50.4 | 50.4 | 50.1 | 50.9 | 51.2 | 51.6 |

## 5. Grau de Ensino / Highest Level of Education Attained

Gráfico / Graph 5.1.  
População Empregada  
Employed Population

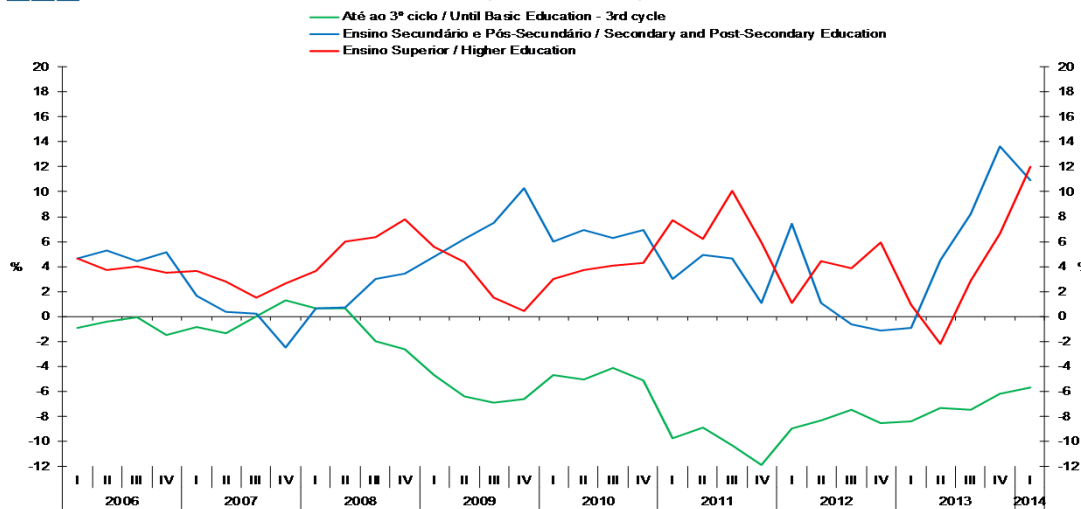
(Milhares de indivíduos / Thousands of individuals)



|   | 2008  |       |       |       | 2009  |       |       |       | 2010  |       |       |       | 2011  |       |       |       | 2012  |       |       |       | 2013  |       |       |       | 2014 |
|---|-------|-------|-------|-------|-------|-------|-------|-------|-------|-------|-------|-------|-------|-------|-------|-------|-------|-------|-------|-------|-------|-------|-------|-------|------|
|   | II    | III   | IV    | I     | II    | III   | IV    | I     | II    | III   | IV    | I     | II    | III   | IV    | I     | II    | III   | IV    | I     | II    | III   | IV    | I     |      |
| Até ao 3º ciclo / Until Basic Education (3rd cycle)                         | 3,663 | 3,628 | 3,578 | 3,476 | 3,429 | 3,377 | 3,340 | 3,313 | 3,256 | 3,237 | 3,170 | 2,989 | 2,967 | 2,903 | 2,794 | 2,721 | 2,721 | 2,686 | 2,556 | 2,493 | 2,521 | 2,486 | 2,398 | 2,352 |      |
| Ensino Secundário e Pós-Secundário / Secondary and Post-Secondary Education | 789   | 804   | 795   | 817   | 837   | 865   | 876   | 866   | 895   | 919   | 937   | 892   | 940   | 962   | 947   | 958   | 949   | 956   | 937   | 950   | 992   | 1,034 | 1,064 | 1,053 |      |
| Ensino Superior / Higher Education  | 776   | 764   | 804   | 806   | 810   | 776   | 807   | 830   | 840   | 808   | 842   | 894   | 893   | 889   | 892   | 904   | 932   | 923   | 945   | 912   | 911   | 950   | 1,007 | 1,022 |      |

Gráfico / Graph 5.2.  
Variação Homóloga da População Empregada  
Employed Population Annual Change

(VH / y-o-y change rate)

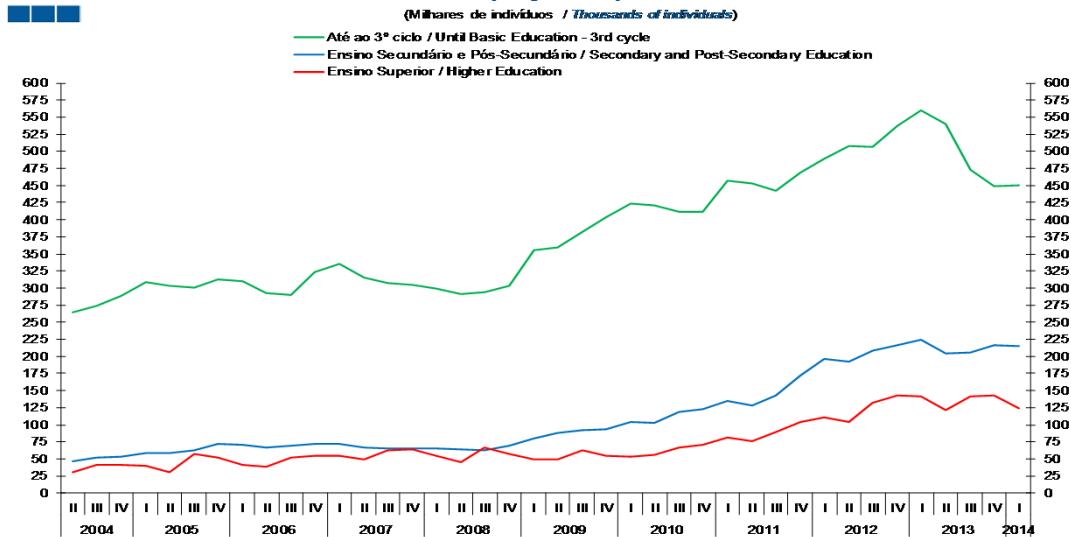


|   | 2008 |      |      |      | 2009 |      |      |      | 2010 |      |      |      | 2011 |       |       |      | 2012 |      |      |      | 2013 |      |      |      | 2014 |
|---|------|------|------|------|------|------|------|------|------|------|------|------|------|-------|-------|------|------|------|------|------|------|------|------|------|------|
|   | II   | III  | IV   | I    | II   | III  | IV   | I    | II   | III  | IV   | I    | II   | III   | IV    | I    | II   | III  | IV   | I    | II   | III  | IV   | I    |      |
| Até ao 3º ciclo / Until Basic Education (3rd cycle)                         | 0.6  | -2.0 | -2.6 | -4.7 | -6.4 | -6.9 | -6.6 | -4.7 | -5.0 | -4.2 | -5.1 | -9.8 | -8.9 | -10.3 | -11.9 | -9.0 | -8.3 | -7.5 | -8.5 | -8.4 | -7.4 | -7.4 | -6.2 | -5.7 |      |
| Ensino Secundário e Pós-Secundário / Secondary and Post-Secondary Education | 0.8  | 3.0  | 3.4  | 4.8  | 6.2  | 7.5  | 10.3 | 6.0  | 6.9  | 6.3  | 6.9  | 3.0  | 4.9  | 4.6   | 1.1   | 7.4  | 1.1  | -0.6 | -1.1 | -0.9 | 4.5  | 8.2  | 13.6 | 10.9 |      |
| Ensino Superior / Higher Education  | 6.0  | 6.3  | 7.8  | 5.6  | 4.4  | 1.5  | 0.4  | 3.0  | 3.7  | 4.1  | 4.3  | 7.7  | 6.2  | 10.1  | 5.9   | 1.1  | 4.4  | 3.8  | 6.0  | 0.9  | -2.2 | 2.9  | 6.6  | 12.0 |      |

## 5. Grau de Ensino / Highest Level of Education Attained

Gráfico / Graph 5.3.  
População Desempregada  
Unemployed Population

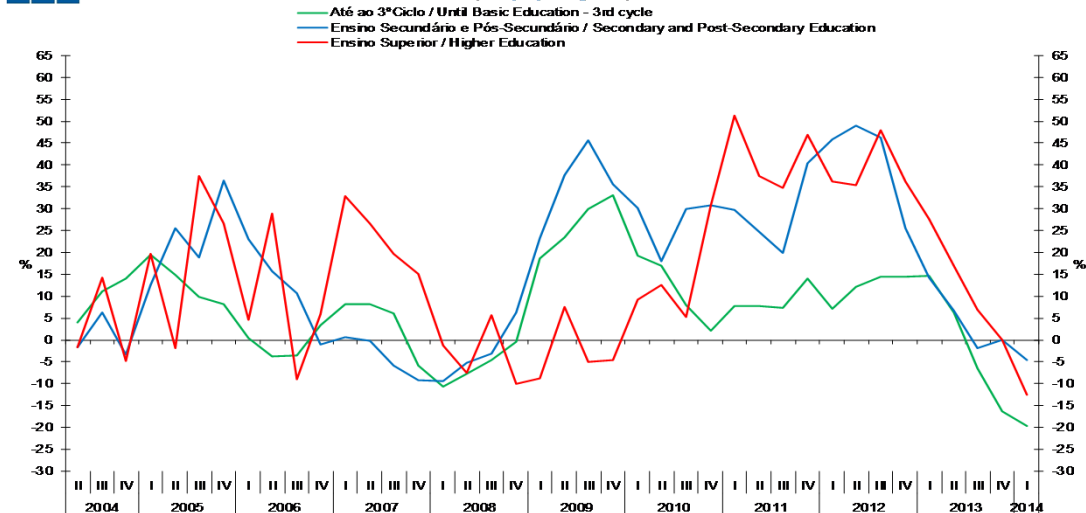
(Milhares de indivíduos / Thousands of individuals)



|   | 2008 |     |     |     | 2009 |     |     |     | 2010 |     |     |     | 2011 |     |     |     | 2012 |     |     |     | 2013 |     |     |     | 2014 |
|---|------|-----|-----|-----|------|-----|-----|-----|------|-----|-----|-----|------|-----|-----|-----|------|-----|-----|-----|------|-----|-----|-----|------|
|   | II   | III | IV  | I   | II   | III | IV  | I   | II   | III | IV  | I   | II   | III | IV  | I   | II   | III | IV  | I   | II   | III | IV  | I   |      |
| Até ao 3º ciclo / Until Basic Education (3rd cycle)                         | 291  | 294 | 303 | 356 | 360  | 382 | 404 | 424 | 421  | 412 | 412 | 457 | 454  | 443 | 470 | 489 | 508  | 506 | 538 | 560 | 540  | 474 | 450 | 450 |      |
| Ensino Secundário e Pós-Secundário / Secondary and Post-Secondary Education | 64   | 63  | 69  | 80  | 88   | 92  | 94  | 104 | 103  | 119 | 123 | 135 | 129  | 143 | 172 | 197 | 192  | 209 | 216 | 225 | 205  | 205 | 216 | 214 |      |
| Ensino Superior / Higher Education  | 46   | 66  | 57  | 49  | 49   | 63  | 54  | 54  | 56   | 66  | 71  | 81  | 76   | 89  | 104 | 111 | 104  | 132 | 142 | 142 | 121  | 141 | 142 | 124 |      |

Gráfico / Graph 5.4.  
Variação Homóloga da População Desempregada  
Unemployed Population Annual Change

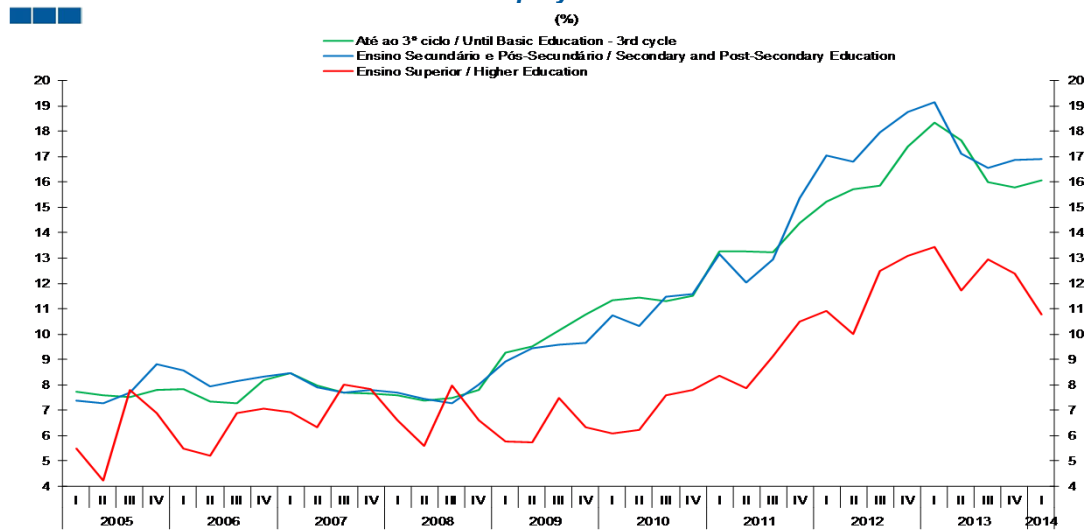
(VH / y-o-y change rate)



|   | 2008 |      |       |      | 2009 |      |      |      | 2010 |      |      |      | 2011 |      |      |      | 2012 |      |      |      | 2013 |      |       |       | 2014 |
|---|------|------|-------|------|------|------|------|------|------|------|------|------|------|------|------|------|------|------|------|------|------|------|-------|-------|------|
|   | II   | III  | IV    | I    | II   | III  | IV   | I    | II   | III  | IV   | I    | II   | III  | IV   | I    | II   | III  | IV   | I    | II   | III  | IV    | I     |      |
| Até ao 3º ciclo / Until Basic Education (3rd cycle)                         | -7.8 | -4.6 | -0.4  | 18.7 | 23.5 | 29.9 | 33.2 | 19.2 | 17.0 | 7.9  | 2.1  | 7.7  | 7.7  | 7.4  | 14.1 | 7.1  | 12.0 | 14.4 | 14.5 | 14.6 | 6.4  | -6.4 | -16.4 | -19.7 |      |
| Ensino Secundário e Pós-Secundário / Secondary and Post-Secondary Education | -5.2 | -3.1 | 6.3   | 23.3 | 37.6 | 45.6 | 35.6 | 30.1 | 17.9 | 30.0 | 30.8 | 29.7 | 24.7 | 19.9 | 40.4 | 45.8 | 49.0 | 46.3 | 25.6 | 14.3 | 6.8  | -1.9 | -0.1  | -4.7  |      |
| Ensino Superior / Higher Education  | -7.5 | 5.6  | -10.1 | -8.7 | 7.6  | -5.0 | -4.6 | 9.1  | 12.6 | 5.2  | 30.7 | 51.3 | 37.4 | 34.7 | 46.8 | 36.1 | 35.5 | 48.0 | 36.2 | 27.7 | 16.9 | 7.0  | 0.1   | -12.7 |      |

## 5. Grau de Ensino / Highest Level of Education Attained

Gráfico / Graph 5.5.  
Taxa de desemprego  
Unemployment Rate



|  | 2008 |     |     | 2009 |     |      |      | 2010 |      |      |      | 2011 |      |      |      | 2012 |      |      |      | 2013 |      |      |      | 2014 |
|--|------|-----|-----|------|-----|------|------|------|------|------|------|------|------|------|------|------|------|------|------|------|------|------|------|------|
|  | II   | III | IV  | I    | II  | III  | IV   | I    | II   | III  | IV   | I    | II   | III  | IV   | I    | II   | III  | IV   | I    | II   | III  | IV   | I    |
| Até ao 3º ciclo /<br>Until Basic Education (3rd cycle)                         | 7.4  | 7.5 | 7.8 | 9.3  | 9.5 | 10.2 | 10.8 | 11.4 | 11.5 | 11.3 | 11.5 | 13.3 | 13.3 | 13.2 | 14.4 | 15.2 | 15.7 | 15.9 | 17.4 | 18.4 | 17.7 | 16.0 | 15.8 | 16.1 |
| Ensino Secundário e Pós-Secundário /<br>Secondary and Post-Secondary Education | 7.5  | 7.3 | 8.0 | 8.9  | 9.5 | 9.6  | 9.7  | 10.7 | 10.3 | 11.5 | 11.6 | 13.1 | 12.0 | 12.9 | 15.4 | 17.0 | 16.8 | 17.9 | 18.7 | 19.1 | 17.1 | 16.6 | 16.9 | 16.9 |
| Ensino Superior / Higher Education   | 5.6  | 8.0 | 6.6 | 5.8  | 5.7 | 7.5  | 6.3  | 6.1  | 6.2  | 7.6  | 7.8  | 8.3  | 7.9  | 9.1  | 10.5 | 10.9 | 10.0 | 12.5 | 13.1 | 13.4 | 11.7 | 12.9 | 12.4 | 10.8 |

## 6. Árvore do Emprego - GEE / Employment Tree - GEE

Tabela / Table 6.1.  
Árvore do Emprego - GEE  
Employment Tree - GEE

**1º Trimestre de 2014 / 1st Quarter of 2014**

(Milhares de indivíduos / Thousands of individuals)

Varição Homóloga / Annual Change

Varição em Cadeia / Quarterly Change

| População / Population |          |       |  |                   |  |
|------------------------|----------|-------|--|-------------------|--|
| 2013                   |          | 2014  |  | Variação / Change |  |
| 10,468.4               | 10,406.2 | -62.2 |  |                   |  |

| Ativa / Active |         |       | Inativa / Inactive |                   |  |
|----------------|---------|-------|--------------------|-------------------|--|
| 2013           |         | 2014  |                    | Variação / Change |  |
| 5,281.4        | 5,215.0 | -66.4 |                    |                   |  |
| 50.5%          | 50.1%   |       |                    |                   |  |

| Empregada / Employed |         |      | Desempregada / Unemployed |                   |  |
|----------------------|---------|------|---------------------------|-------------------|--|
| 2013                 |         | 2014 |                           | Variação / Change |  |
| 4,354.6              | 4,426.9 | 72.3 |                           |                   |  |
| 82.5%                | 84.9%   |      |                           |                   |  |

| Empregada / Employed |       |        | Desempregada / Unemployed |                   |  |
|----------------------|-------|--------|---------------------------|-------------------|--|
| 2013                 |       | 2014   |                           | Variação / Change |  |
| 926.8                | 788.1 | -138.7 |                           |                   |  |
| 17.5%                | 15.1% |        |                           |                   |  |

| População / Population |          |       |  |                   |  |
|------------------------|----------|-------|--|-------------------|--|
| IV                     |          | I     |  | Variação / Change |  |
| 10,428.4               | 10,406.2 | -22.2 |  |                   |  |

| Ativa / Active |         |       | Inativa / Inactive |                   |  |
|----------------|---------|-------|--------------------|-------------------|--|
| IV             |         | I     |                    | Variação / Change |  |
| 5,276.8        | 5,215.0 | -61.8 |                    |                   |  |
| 50.6%          | 50.1%   |       |                    |                   |  |

| Empregada / Employed |         |       | Desempregada / Unemployed |                   |  |
|----------------------|---------|-------|---------------------------|-------------------|--|
| IV                   |         | I     |                           | Variação / Change |  |
| 4,468.9              | 4,426.9 | -42.0 |                           |                   |  |
| 84.7%                | 84.9%   |       |                           |                   |  |

| Empregada / Employed |       |       | Desempregada / Unemployed |                   |  |
|----------------------|-------|-------|---------------------------|-------------------|--|
| IV                   |       | I     |                           | Variação / Change |  |
| 808.0                | 788.1 | -19.9 |                           |                   |  |
| 15.3%                | 15.1% |       |                           |                   |  |

Cálculos / Calculations: GEE