

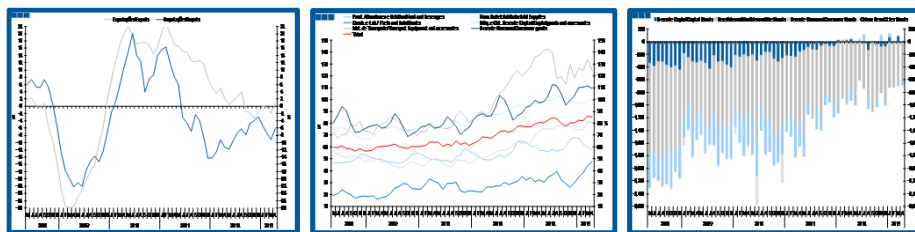
# Estatísticas Temáticas de Conjuntura

## *Short-term Thematic Statistics*

- Nº 6/2013 -

11 de Junho de 2013

*June, 11, 2013*



# Comércio Internacional de Bens

## *International Trade of Goods*

- Abril de 2013 -

*- April, 2013 -*

Fonte: Instituto Nacional de Estatística

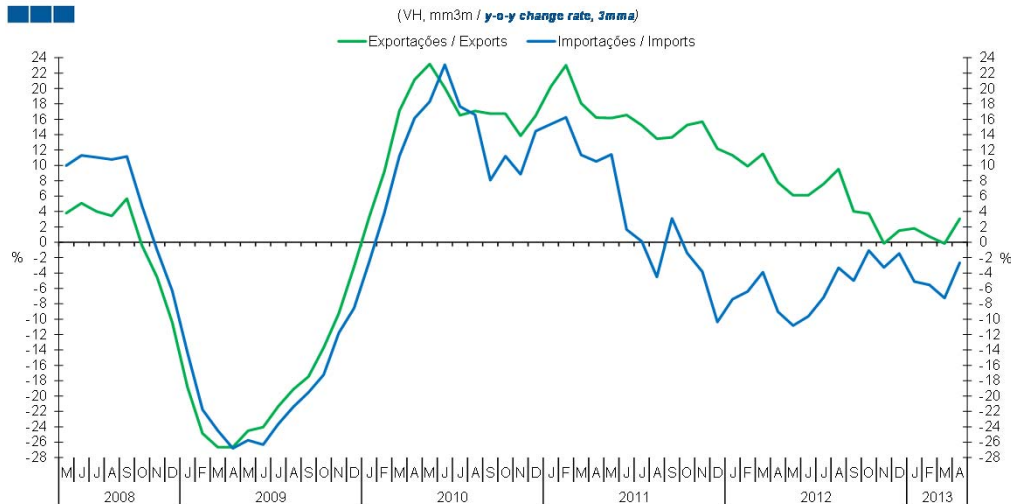
*Source: Statistics Portugal*

## Índice / *Index*

	Página / <i>Page</i>
<b>1. Total</b>	
Importações e Exportações / <i>Imports and Exports</i>	3
Taxa de Cobertura / <i>Coverage Rate</i>	3
Saldo / <i>Balance</i>	4
<b>2. Zona Euro-17 / <i>Euro Area-17</i></b>	
Importações e Exportações / <i>Imports and Exports</i>	5
Taxa de Cobertura / <i>Coverage Rate</i>	5
Saldo / <i>Balance</i>	6
<b>3. Intracomunitário / <i>Intra-Community</i></b>	
Importações e Exportações / <i>Imports and Exports</i>	7
Taxa de Cobertura / <i>Coverage Rate</i>	7
Saldo / <i>Balance</i>	8
<b>4. Extracomunitário / <i>Extra-Community</i></b>	
Importações e Exportações / <i>Imports and Exports</i>	9
Taxa de Cobertura / <i>Coverage Rate</i>	9
Saldo / <i>Balance</i>	10
<b>5. Grandes Categorias Económicas / <i>Broad Economic Categories</i></b>	
Exportações / <i>Exports</i>	11
Importações / <i>Imports</i>	11
Taxa de Cobertura / <i>Coverage Rate</i>	12
Saldo / <i>Balance</i>	12
<b>6. Classes Básicas de Bens do Sistema Europeu de Contas Nacionais / <i>Basic Classes of Goods in the European System of Accounts</i></b>	
Exportações / <i>Exports</i>	13
Importações / <i>Imports</i>	13
Taxa de Cobertura / <i>Coverage Rate</i>	14
Saldo / <i>Balance</i>	14
Estrutura do Saldo / <i>Balance Structure</i>	15
<b>7. Índice GEE de Comércio Internacional de Bens / <i>GEE Index of International Trade of Goods</i></b>	
Total / <i>Total</i>	16
Zona Euro / <i>Euro Area</i>	16
Intracomunitário / <i>Intra-Community</i>	17
Extracomunitário / <i>Extra-Community</i>	17

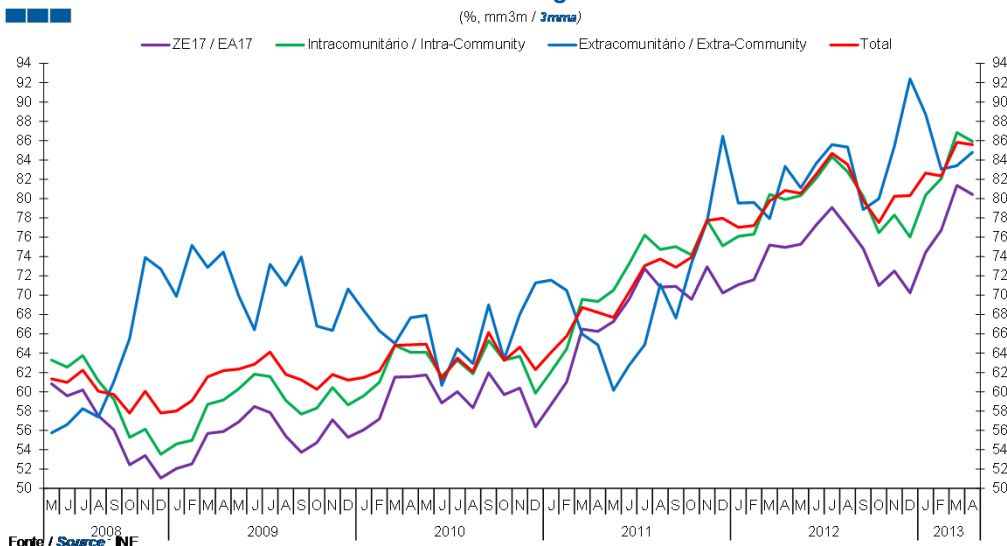
# 1. Total

Gráfico / Graph 1.1.  
Importações e Exportações  
Imports and Exports



	2011												2012												2013			
	M	J	J	A	S	O	N	D	J	F	M	A	M	J	J	A	S	O	N	D	J	F	M	A				
Exportações / Exports	16.2	16.5	15.2	13.5	13.6	15.2	15.7	12.2	11.3	9.9	11.5	7.8	6.1	6.1	7.6	9.5	4.0	3.7	-0.1	1.5	1.8	0.7	-0.2	3.1				
Importações / Imports	11.4	1.7	0.1	-4.5	3.1	-1.4	-3.8	-10.4	-7.4	-6.4	-3.9	-9.0	-10.8	-9.6	-7.2	-3.3	-5.0	-1.1	-3.3	-1.5	-5.1	-5.5	-7.2	-2.7				

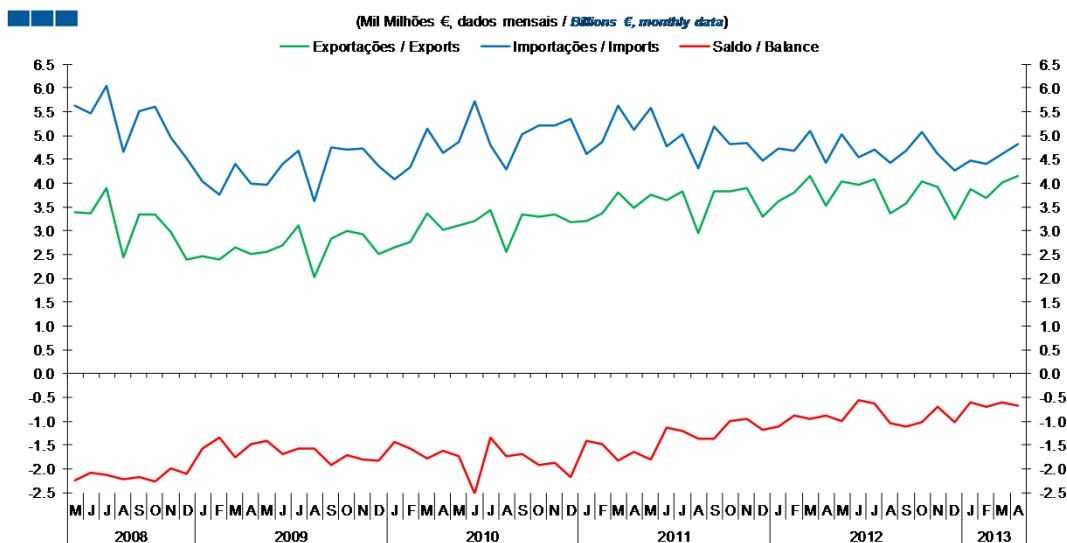
Gráfico / Graph 1.2.  
Taxa de Cobertura  
Coverage Rate



	2011												2012												2013			
	M	J	J	A	S	O	N	D	J	F	M	A	M	J	J	A	S	O	N	D	J	F	M	A				
ZE 17 / EA 17	67.3	69.6	72.7	70.8	70.9	69.6	72.9	70.2	71.1	71.6	75.2	74.9	75.3	77.3	79.1	77.0	74.8	71.0	72.5	70.3	74.4	76.7	81.4	80.4				
Intracomunitário / Intra-community	70.5	73.2	76.2	74.7	75.0	74.2	77.7	75.1	76.1	76.3	80.4	79.9	80.3	82.1	84.3	82.8	80.2	76.5	78.3	76.0	80.4	82.1	86.8	85.9				
Extracomunitário / Extra-community	60.1	62.7	64.9	71.1	67.6	73.3	77.7	86.5	79.5	79.6	77.9	83.3	81.1	83.7	85.6	85.3	78.9	80.0	85.4	92.4	88.7	83.0	83.4	84.8				
Total	67.7	70.3	73.1	73.7	72.9	73.9	77.7	78.0	77.0	77.2	79.7	80.8	80.5	82.6	84.7	83.5	79.8	77.5	80.2	80.3	82.6	82.3	85.8	85.6				

# 1. Total

Gráfico / Graph 1.3.  
Saldo  
Balance

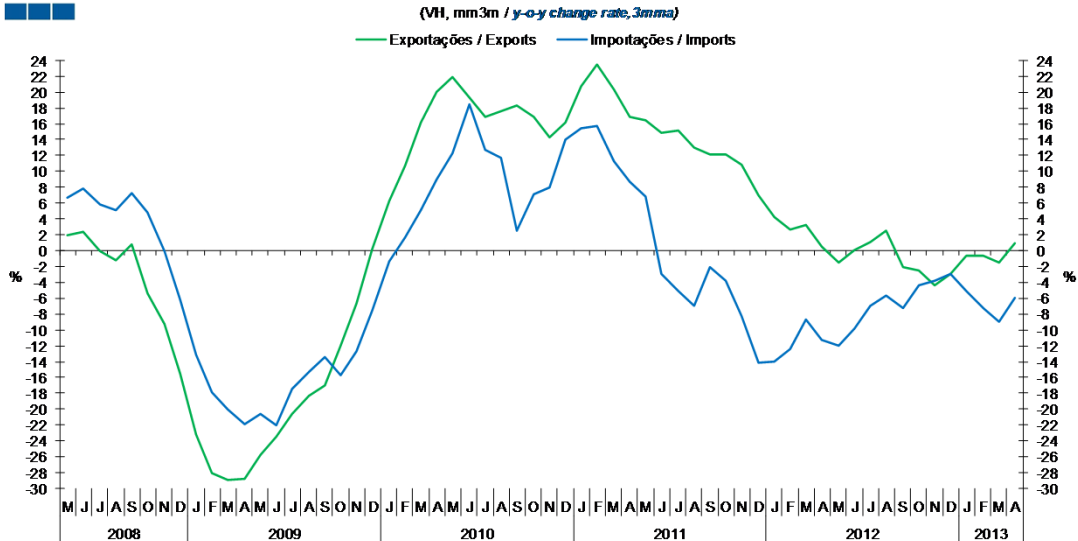


	2011		2012		2013		2013		2013		2013		2013		2013		2013		2013		2013		2013	
	M	J	J	A	S	O	N	D	J	F	M	A	M	J	J	A	S	O	N	D	J	F	M	A
Exportações / Exports	3.8	3.6	3.8	2.9	3.8	3.8	3.9	3.3	3.6	3.8	4.1	3.5	4.0	4.0	4.1	3.4	3.6	4.0	3.9	3.2	3.9	3.7	4.0	4.1
Importações / Imports	5.6	4.8	5.0	4.3	5.2	4.8	4.8	4.5	4.7	4.7	5.1	4.4	5.0	4.5	4.7	4.4	4.7	5.1	4.6	4.3	4.5	4.4	4.6	4.8
Saldo / Balance	-1.8	-1.1	-1.2	-1.4	-1.4	-1.0	-0.9	-1.2	-1.1	-0.9	-1.0	-0.9	-1.0	-0.6	-0.6	-1.1	-1.1	-1.0	-0.7	-1.0	-0.6	-0.7	-0.6	-0.7

2. Zona Euro-17 / Euro Area-17

Gráfico / Graph 2.1.  
Importações e Exportações  
Imports and Exports

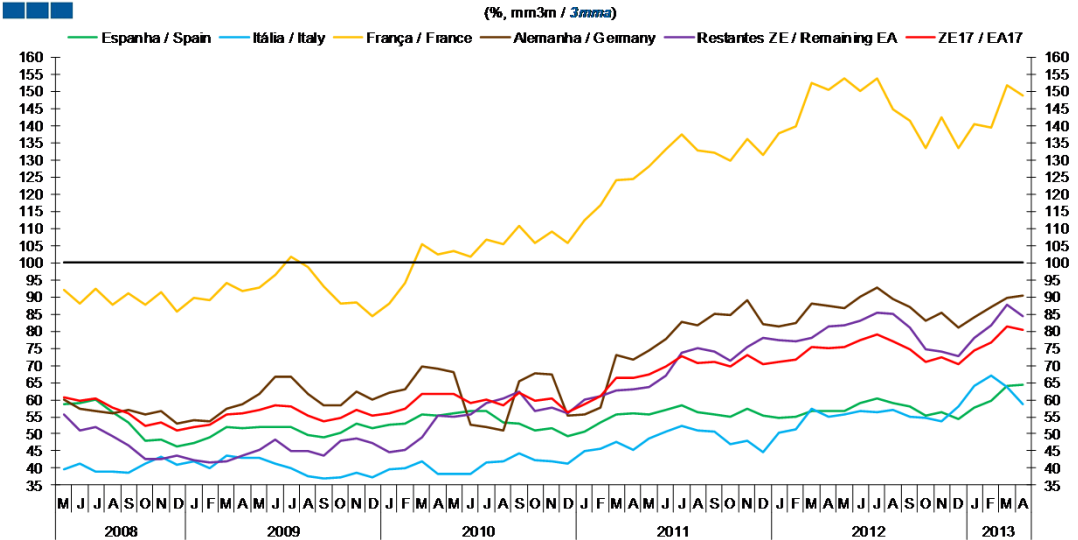
(VI, mm3m / y-o-y change rate, 3mma)



	2011				2012				2013															
	M	J	J	A	S	O	N	D	J	F	M	A	M	J	F	M	A							
Exportações / Exports	16.4	14.8	15.1	13.0	12.1	12.2	10.8	6.9	4.2	2.7	3.2	0.5	-1.5	0.1	1.1	2.5	-2.1	-2.5	-4.4	-2.9	-0.6	-0.6	-1.5	0.9
Importações / Imports	6.8	-2.9	-5.0	-6.9	-2.0	-3.7	-8.3	-14.2	-14.0	-12.5	-8.7	-11.2	-11.9	-9.9	-7.0	-5.7	-7.2	-4.4	-3.8	-2.9	-5.1	-7.2	-9.0	-6.0

Gráfico / Graph 2.2.  
Taxa de Cobertura  
Coverage Rate

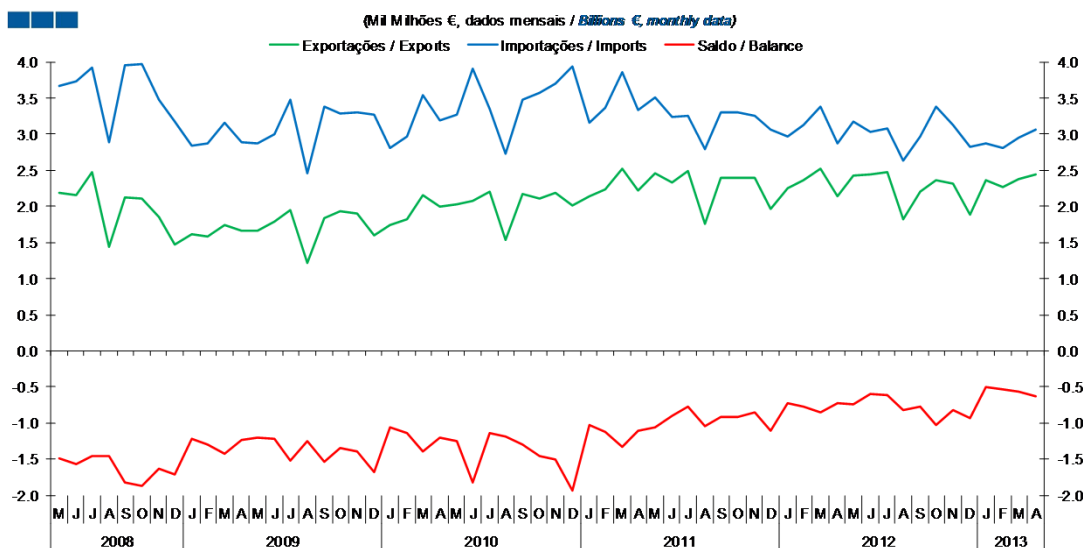
(%, mm3m / 3mma)



	2011				2012				2013															
	M	J	J	A	S	O	N	D	J	F	M	A	M	J	F	M	A							
Espanha / Spain	55.8	57.0	58.5	56.2	55.7	55.0	57.2	55.2	54.8	55.2	56.7	56.5	56.8	59.1	60.4	58.9	57.9	55.4	56.3	54.5	57.6	59.6	64.1	64.3
Itália / Italy	48.7	50.8	52.3	50.9	50.7	47.1	48.1	44.6	50.4	51.5	57.2	54.9	55.7	56.7	56.4	57.1	55.0	54.6	53.6	58.1	64.1	66.9	63.7	58.6
França / France	128.2	133.1	137.5	132.9	132.2	129.6	136.0	131.4	137.6	139.7	152.5	150.5	153.9	150.2	153.9	144.7	141.5	133.5	142.3	133.4	140.4	139.4	151.9	148.8
Alemanha / Germany	74.4	77.6	82.8	81.8	85.2	84.7	88.9	82.1	81.4	82.3	88.0	87.4	86.8	90.2	92.7	89.5	87.1	83.1	85.3	81.1	84.1	87.0	89.8	90.4
Restantes ZE / Remaining EA	63.5	67.0	73.7	75.1	74.2	71.3	75.5	78.1	77.3	77.1	78.0	81.5	81.7	83.0	85.4	84.9	80.9	74.7	74.1	72.7	78.0	81.6	87.7	84.4
ZE 17 / EA 17	67.3	69.6	72.7	70.8	70.9	69.6	72.9	70.2	71.1	71.6	75.2	74.9	75.3	77.3	79.1	77.0	74.8	71.0	72.5	70.3	74.4	76.7	81.4	80.4

## 2. Zona Euro-17 / Euro Area-17

Gráfico / Graph 2.3.  
Saldo  
Balance

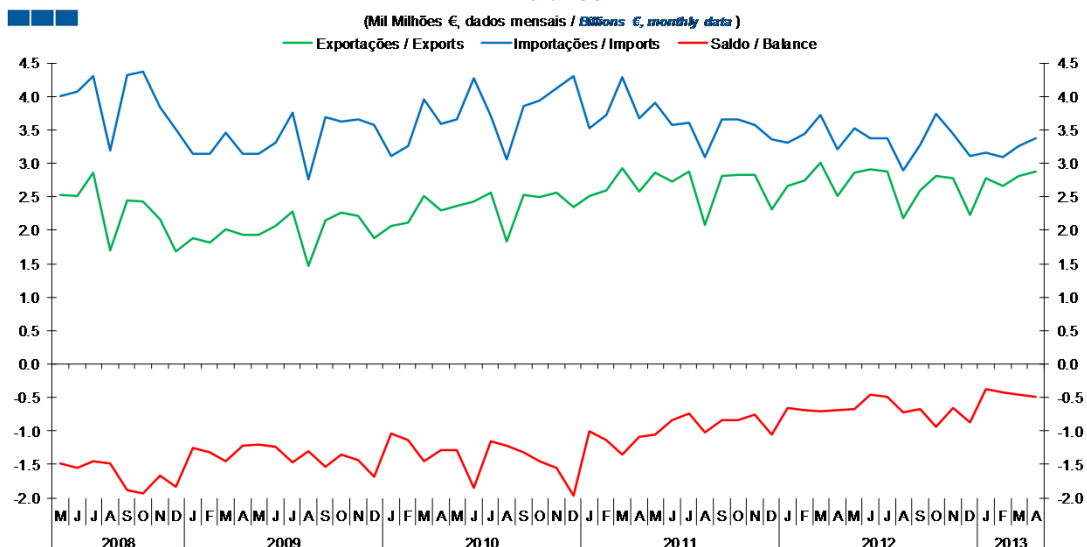


	2011		2009				2010				2012				2011				2012				2013			
	M	J	J	A	S	O	N	D	J	F	M	A	M	J	J	A	S	O	N	D	J	F	M	A		
Exportações / Exports	2.5	2.3	2.5	1.8	2.4	2.4	2.4	2.0	2.2	2.4	2.5	2.1	2.4	2.4	2.5	1.8	2.2	2.4	2.3	1.9	2.4	2.3	2.4	2.4		
Importações / Imports	3.5	3.2	3.3	2.8	3.3	3.3	3.3	3.1	3.0	3.1	3.4	2.9	3.2	3.0	3.1	2.6	3.0	3.4	3.1	2.8	2.9	2.8	2.9	3.1		
Saldo / Balance	-1.1	-0.9	-0.8	-1.0	-0.9	-0.9	-0.8	-1.1	-0.7	-0.8	-0.9	-0.7	-0.7	-0.6	-0.6	-0.8	-0.8	-1.0	-0.8	-0.9	-0.5	-0.5	-0.6	-0.6		



### 3. Intracomunitário / Intra-Community

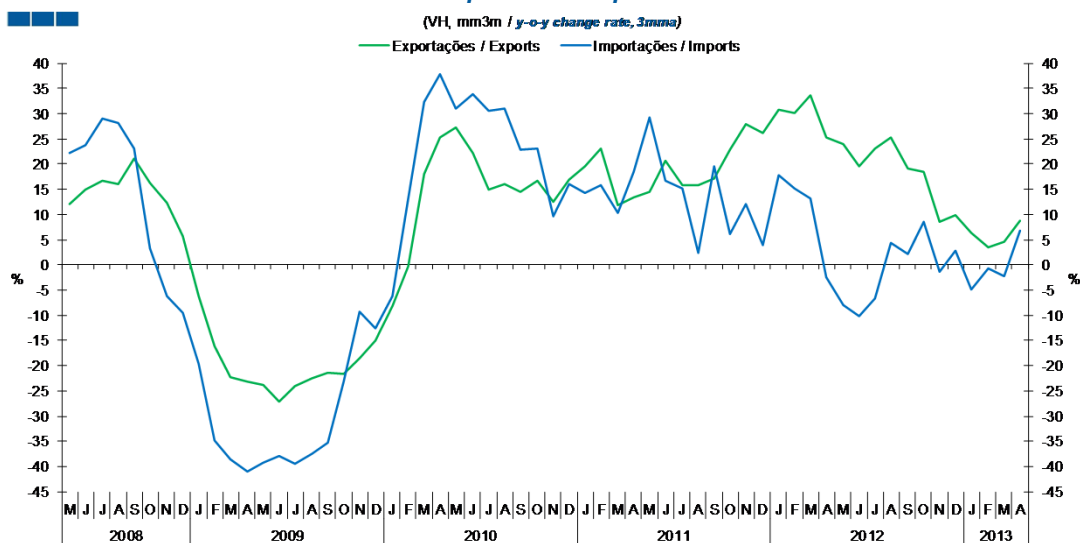
Gráfico / Graph 3.3.  
Saldo  
Balance



	2011		2009				2010				2012				2013									
	M	J	J	A	S	O	N	D	J	F	M	A	M	J	J	A	S	O	N	D	J	F	M	A
Exportações / Exports	2.9	2.7	2.9	2.1	2.8	2.8	2.8	2.3	2.7	2.7	3.0	2.5	2.9	2.9	2.9	2.2	2.6	2.8	2.8	2.2	2.8	2.7	2.8	2.9
Importações / Imports	3.9	3.6	3.6	3.1	3.7	3.7	3.6	3.4	3.3	3.4	3.7	3.2	3.5	3.4	3.4	2.9	3.3	3.7	3.4	3.1	3.2	3.1	3.3	3.4
Saldo / Balance	-1.1	-0.8	-0.7	-1.0	-0.8	-0.8	-0.7	-1.0	-0.7	-0.7	-0.7	-0.7	-0.7	-0.5	-0.5	-0.7	-0.7	-0.9	-0.7	-0.9	-0.4	-0.4	-0.5	-0.5

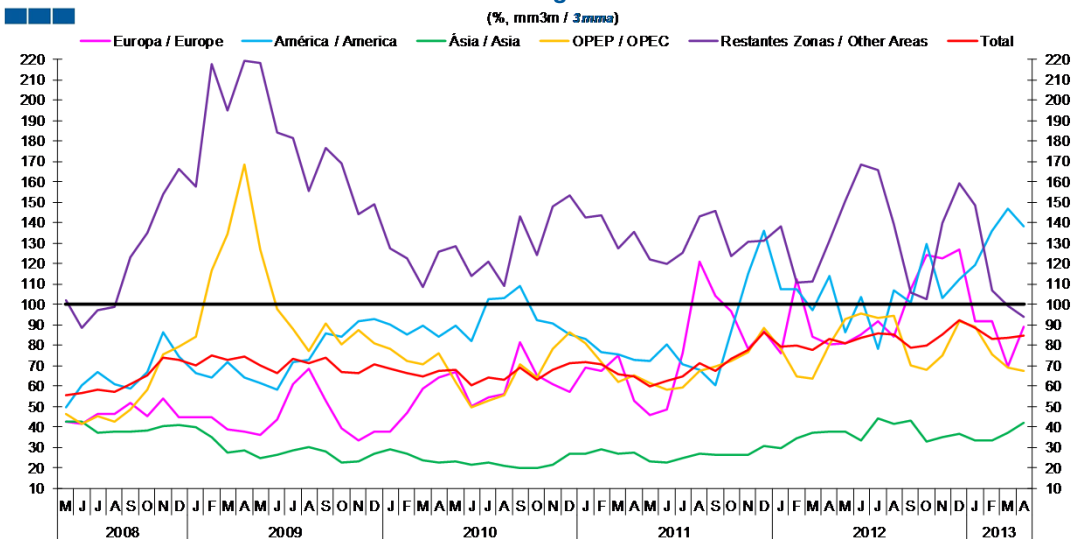
## 4. Extracomunitário / Extra-Community

Gráfico / Graph 4.1.  
Importações e Exportações  
Imports and Exports



	2011					2012					2013													
	M	J	J	A	S	O	N	D	J	F	M	A	M	J	J	A	S	O	N	D	J	F	M	A
Exportações / Exports	14.5	20.6	15.9	15.8	17.2	22.8	27.9	26.2	30.9	30.0	33.6	25.2	24.0	19.7	23.2	25.3	19.0	18.5	8.6	9.9	6.2	3.5	4.6	8.7
Importações / Imports	29.3	16.6	15.1	2.5	19.6	6.2	12.0	4.0	17.7	15.1	13.1	-2.6	-8.1	-10.3	-6.6	4.4	2.1	8.6	-1.3	2.9	-4.8	-0.8	-2.2	6.8

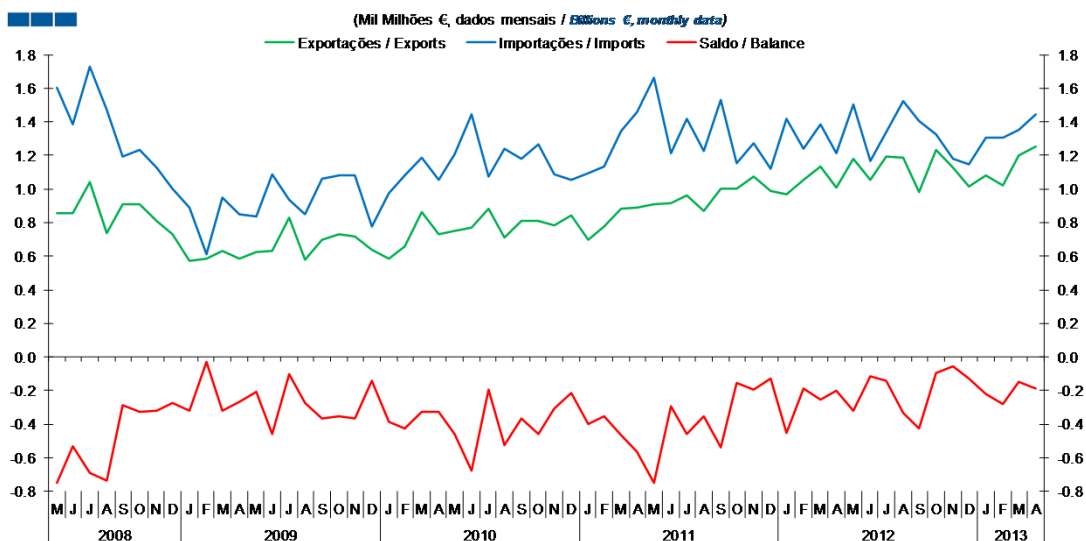
Gráfico / Graph 4.2.  
Taxa de Cobertura  
Coverage Rate



	2011					2012					2013													
	M	J	J	A	S	O	N	D	J	F	M	A	M	J	J	A	S	O	N	D	J	F	M	A
Europa / Europe	45.6	48.8	75.9	120.7	104.3	96.6	78.4	86.6	76.0	112.4	84.2	80.6	80.9	85.4	91.6	84.0	107.7	123.9	122.6	127.0	91.7	91.6	69.9	89.0
América / America	72.2	80.2	70.4	67.9	60.7	87.1	114.7	136.2	107.1	107.6	97.0	114.0	86.4	103.7	78.4	107.1	100.8	129.6	103.0	112.1	119.5	136.1	147.0	138.0
Ásia / Asia	23.2	22.6	24.7	26.7	26.6	26.5	26.2	30.5	29.7	34.5	37.4	38.0	38.0	33.5	44.0	41.5	43.4	33.1	35.2	36.5	33.4	33.2	37.0	42.2
OPEP / OPEC	61.7	58.5	59.3	67.6	69.7	72.3	76.9	88.6	78.4	65.0	63.9	80.6	92.6	95.3	93.1	94.2	70.2	67.8	74.8	91.9	89.1	75.3	69.2	67.3
Restantes Zonas / Other Areas	121.8	120.1	125.3	143.0	145.7	123.8	130.6	131.2	138.1	110.8	111.4	131.3	150.7	168.3	165.6	139.2	105.5	102.6	139.7	159.1	148.7	107.1	99.3	94.0
Total	60.1	62.7	64.9	71.1	67.6	73.3	77.7	86.5	79.5	79.6	77.9	83.3	81.1	83.7	85.6	85.3	78.9	80.0	85.4	92.4	88.7	83.0	83.4	84.8

#### 4. Extracomunitário / Extra-Community

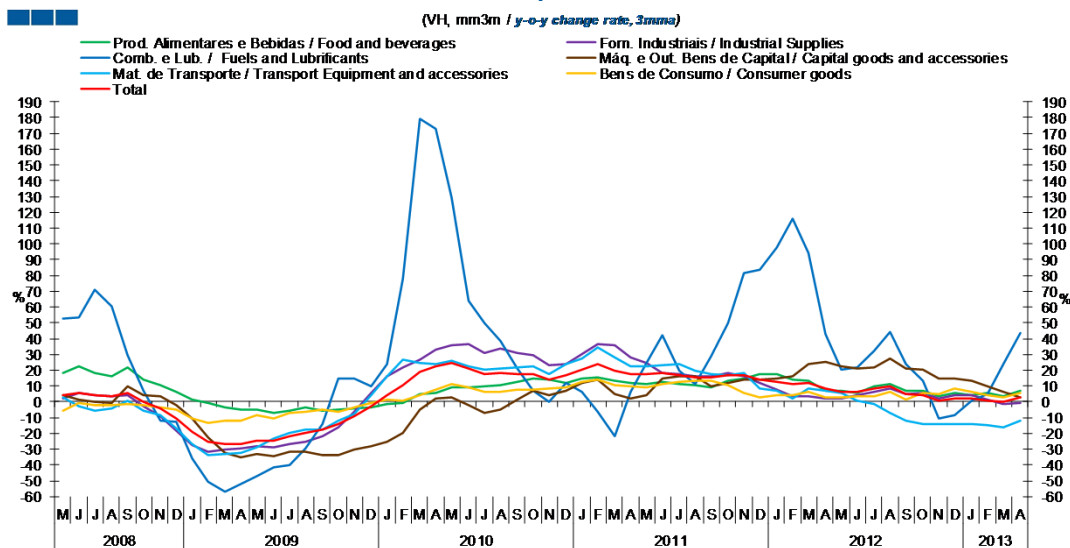
Gráfico / Graph 4.3.  
Saldo  
Balance



	2011				2012												2013							
	M	J	J	A	S	O	N	D	J	F	M	A	M	J	J	A	S	O	N	D	J	F	M	A
Exportações / Exports	0.9	0.9	1.0	0.9	1.0	1.0	1.1	1.0	1.0	1.1	1.1	1.0	1.2	1.1	1.2	1.2	1.0	1.2	1.1	1.0	1.1	1.0	1.2	1.3
Importações / Imports	1.7	1.2	1.4	1.2	1.5	1.2	1.3	1.1	1.4	1.2	1.4	1.2	1.5	1.2	1.3	1.5	1.4	1.3	1.2	1.1	1.3	1.3	1.3	1.4
Saldo / Balance	-0.7	-0.3	-0.5	-0.4	-0.5	-0.2	-0.2	-0.1	-0.5	-0.2	-0.3	-0.2	-0.3	-0.1	-0.1	-0.3	-0.4	-0.1	-0.1	-0.1	-0.2	-0.3	-0.2	-0.2

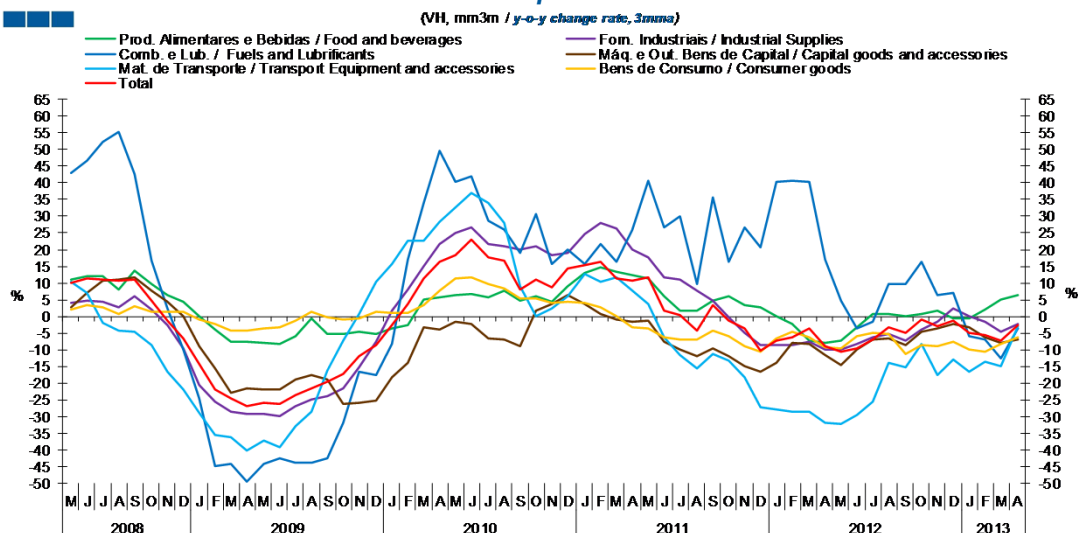
## 5. Grandes Categorias Económicas / Broad Economic Categories

Gráfico / Graph 5.1.  
Exportações  
Exports



	2011				2012				2013															
	M	J	J	A	S	O	N	D	J	F	M	A	M	J	J	A	S	O	N	D	J	F	M	A
Produtos Alimentares e Bebidas / Food and Beverages	11.5	12.4	11.0	10.9	9.4	13.0	14.8	17.5	17.3	13.8	13.0	7.2	7.2	5.5	10.0	11.0	7.0	7.1	3.8	5.3	4.2	5.9	3.2	6.9
Comb. e Lub. / Fuels and Lubricants	24.5	42.2	19.7	11.5	28.6	50.1	81.9	83.5	97.5	116.0	94.1	42.8	20.3	22.1	32.0	44.5	23.6	13.4	-10.4	-8.7	0.8	4.7	23.6	43.6
Mat. de Transporte / Transport equipment and accessories	22.4	23.5	23.6	19.8	17.4	16.7	18.2	8.7	6.7	2.4	8.5	7.0	5.4	0.8	-1.5	-7.3	-11.8	-14.3	-13.9	-14.3	-14.1	-15.0	-16.4	-12.1
Forn. Industriais / Industrial Supplies	24.3	18.1	17.4	16.2	16.5	18.2	16.0	12.0	7.4	3.7	3.3	2.0	2.0	4.1	6.4	8.5	5.2	5.4	2.4	4.1	4.0	1.7	-1.6	-0.5
Máq. e Out. Bens de Capital / Capital Goods and Accessories	4.5	14.5	16.3	16.1	10.1	12.1	14.3	14.2	14.7	16.1	23.9	25.0	22.5	21.2	22.0	27.6	21.0	20.2	15.0	15.0	13.2	9.7	6.3	3.0
Bens de Consumo / Consumer Goods	9.4	11.2	12.3	13.1	13.6	10.6	6.0	2.8	4.6	4.3	6.1	2.7	2.6	3.8	3.8	6.2	1.1	5.6	5.1	8.1	6.5	4.4	2.9	5.8
<b>Total</b>	<b>17.6</b>	<b>18.2</b>	<b>16.9</b>	<b>15.3</b>	<b>15.3</b>	<b>16.9</b>	<b>17.2</b>	<b>13.9</b>	<b>12.7</b>	<b>10.9</b>	<b>12.0</b>	<b>8.3</b>	<b>6.6</b>	<b>6.7</b>	<b>8.1</b>	<b>10.1</b>	<b>4.6</b>	<b>4.3</b>	<b>0.4</b>	<b>2.0</b>	<b>2.1</b>	<b>0.9</b>	<b>-0.2</b>	<b>3.1</b>

Gráfico / Graph 5.2.  
Importações  
Imports



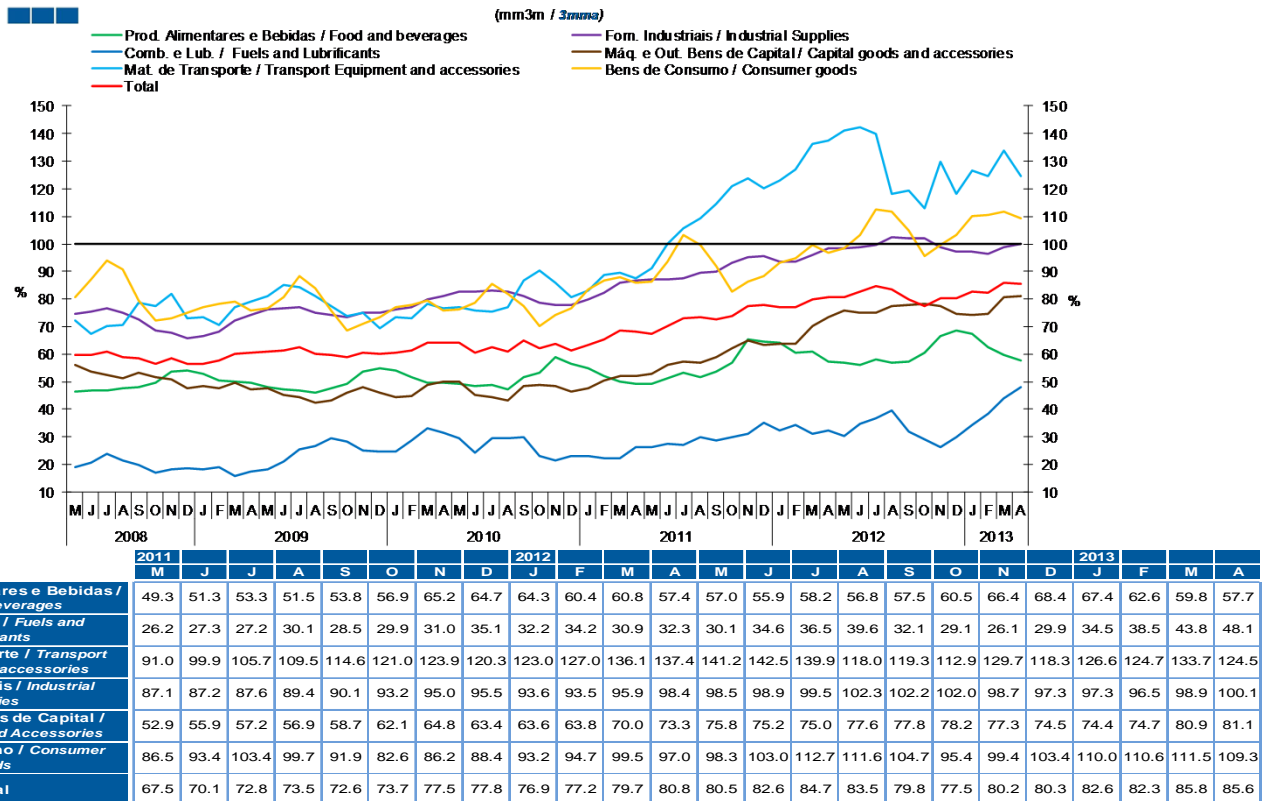
	2011				2012				2013															
	M	J	J	A	S	O	N	D	J	F	M	A	M	J	J	A	S	O	N	D	J	F	M	A
Produtos Alimentares e Bebidas / Food and Beverages	11.2	6.0	1.8	1.6	4.9	6.0	3.5	2.7	0.0	-2.2	-7.3	-8.1	-7.4	-3.2	0.7	0.7	0.2	0.8	1.8	-0.4	-0.5	2.2	5.0	6.4
Comb. e Lub. / Fuels and Lubricants	40.6	26.5	29.8	9.6	35.6	16.3	26.6	20.8	40.3	40.6	40.2	17.0	4.7	-3.6	-1.6	9.6	9.9	16.5	6.4	7.2	-5.8	-7.0	-12.7	-3.7
Mat. de Transporte / Transport equipment and accessories	3.7	-6.2	-11.6	-15.6	-11.1	-13.1	-18.2	-27.1	-27.8	-28.6	-28.6	-31.9	-32.1	-29.4	-25.6	-14.0	-15.3	-8.1	-17.7	-12.9	-16.5	-13.4	-14.9	-3.0
Forn. Industriais / Industrial Supplies	17.8	11.9	11.2	7.6	4.8	-0.2	-4.9	-8.6	-8.4	-8.6	-7.5	-10.1	-9.8	-8.2	-6.4	-5.2	-7.2	-3.8	-1.5	2.3	0.0	-1.5	-4.6	-2.2
Máq. e Out. Bens de Capital / Capital Goods and Accessories	-1.3	-7.5	-10.0	-11.8	-9.4	-12.0	-14.9	-16.6	-13.8	-7.9	-8.1	-11.5	-14.5	-9.9	-7.0	-6.5	-8.7	-4.5	-3.5	-2.3	-3.2	-6.4	-8.0	-6.9
Bens de Consumo / Consumer Goods	-3.6	-6.2	-7.0	-6.9	-4.3	-5.8	-8.9	-10.7	-6.5	-4.7	-6.1	-9.1	-9.7	-5.9	-4.8	-5.2	-11.2	-8.6	-8.9	-7.6	-9.8	-10.6	-8.2	-6.2
<b>Total</b>	<b>11.6</b>	<b>1.8</b>	<b>0.2</b>	<b>-4.3</b>	<b>3.3</b>	<b>-1.2</b>	<b>-3.6</b>	<b>-10.2</b>	<b>-7.1</b>	<b>-6.1</b>	<b>-3.7</b>	<b>-8.8</b>	<b>-10.6</b>	<b>-9.4</b>	<b>-7.0</b>	<b>-3.1</b>	<b>-4.8</b>	<b>-0.8</b>	<b>-3.0</b>	<b>-1.2</b>	<b>-5.0</b>	<b>-5.5</b>	<b>-7.2</b>	<b>-2.7</b>

Nota: Não inclui Bens N.E. Noutra Categoria devido ao seu reduzido valor relativo e elevada variabilidade.

Note: Does not include Goods Not Elsewhere Specified because of its small relative value and high variability

## 5. Grandes Categorias Económicas / Broad Economic Categories

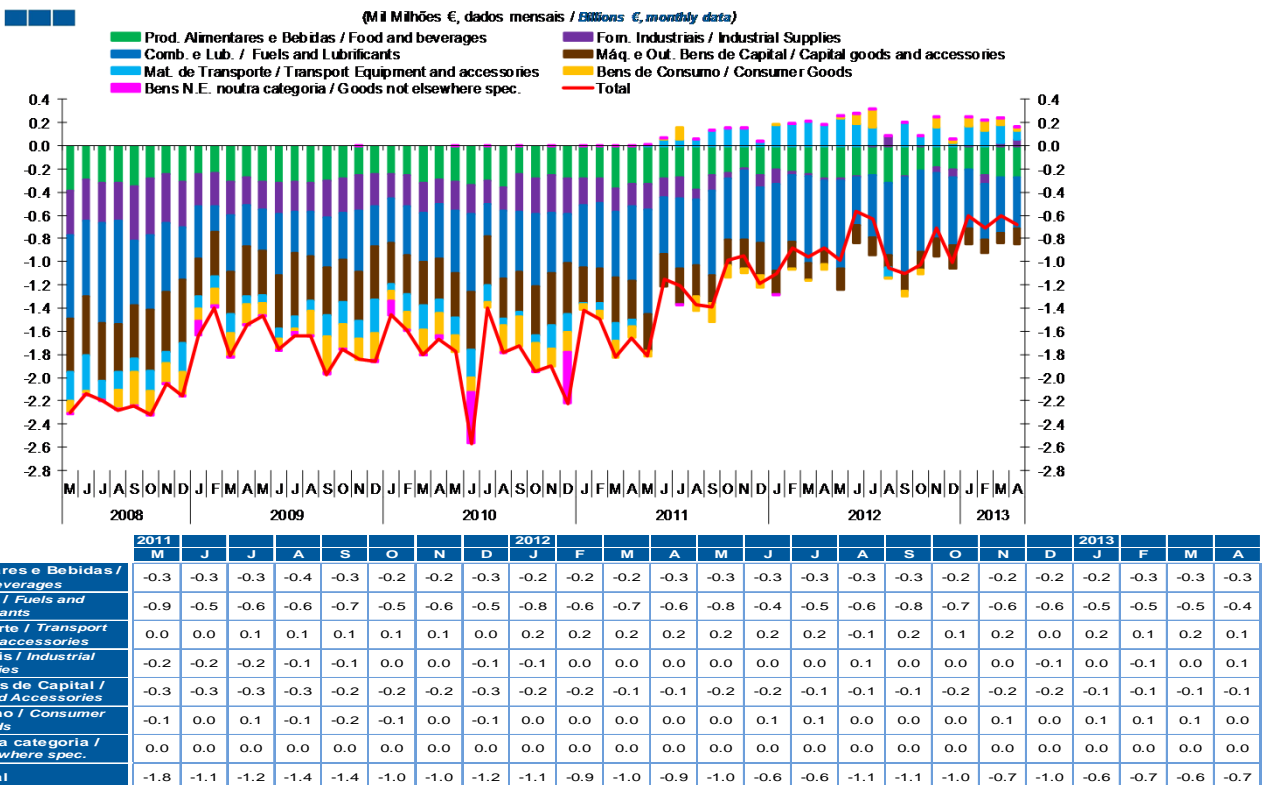
Gráfico / Graph 5.3.  
Taxa de Cobertura  
Coverage Rate



Nota: Não inclui Bens N.E. Outra Categoria devido ao seu reduzido valor relativo e elevada variabilidade.

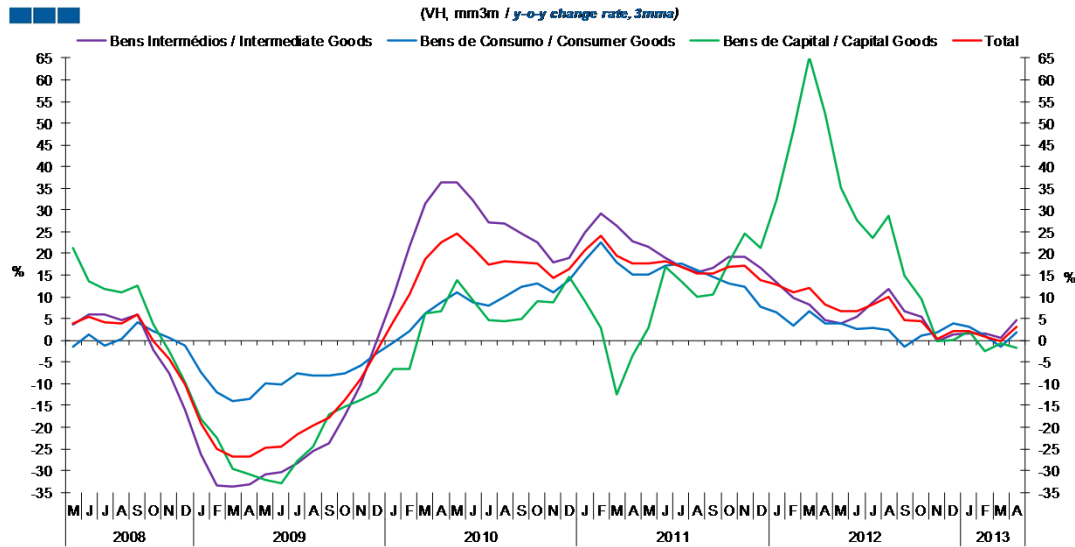
Note: Does not include Goods Not Elsewhere Specified because of its small relative value and high variability

Gráfico / Graph 5.4.  
Saldo  
Balance



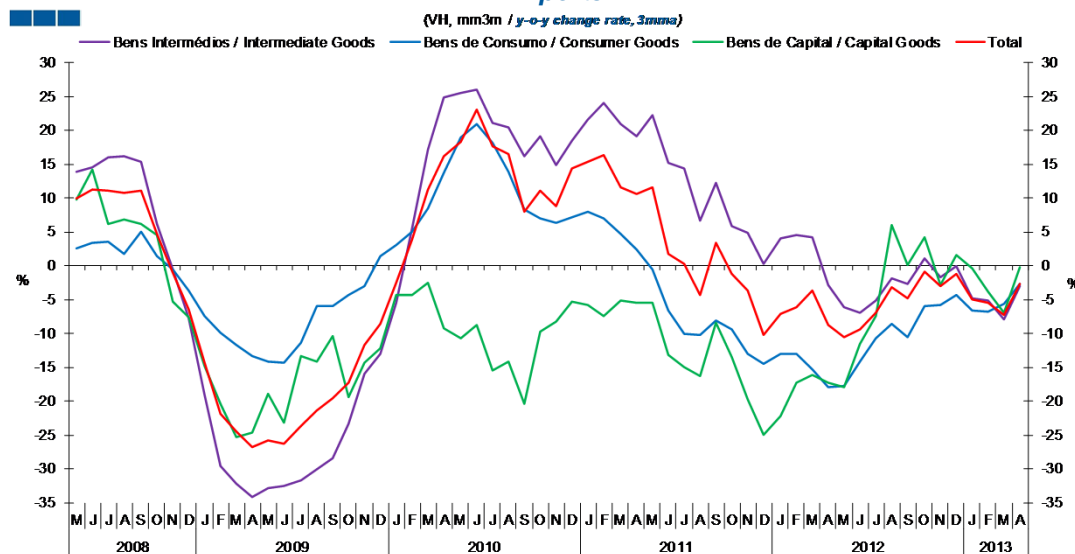
## 6. Classes Básicas de Bens do Sistema Europeu de Contas Nacionais / Basic Classes of Goods in the European System of Accounts

Gráfico / Graph 6.1.  
Exportações  
Exports



	2011												2012					2013						
	M	J	J	A	S	O	N	D	J	F	M	A	M	J	J	A	S	O	N	D	J	F	M	A
Bens Intermediários / Intermediate Goods	21.6	19.1	17.0	15.6	16.7	19.3	19.2	16.7	13.3	9.9	8.2	4.7	3.8	5.4	8.8	11.9	6.8	5.4	-0.3	1.3	1.6	1.5	0.6	4.7
Bens de Consumo / Consumer Goods	15.2	17.1	17.7	16.2	14.7	13.2	12.2	7.7	6.5	3.4	6.6	3.8	3.9	2.7	2.8	2.3	-1.5	1.1	1.8	3.8	3.0	1.0	-1.4	1.7
Bens de Capital / Capital Goods	2.9	17.0	13.5	10.1	10.4	18.0	24.6	21.2	32.3	48.4	65.1	52.2	35.0	27.8	23.6	28.8	14.9	9.5	-0.1	0.2	2.1	-2.5	-0.6	-1.6
Total	17.6	18.2	16.9	15.3	15.3	16.9	17.2	13.9	12.7	10.9	12.0	8.3	6.6	6.7	8.1	10.1	4.6	4.3	0.4	2.0	2.1	0.9	-0.2	3.1

Gráfico / Graph 6.2.  
Importações  
Imports



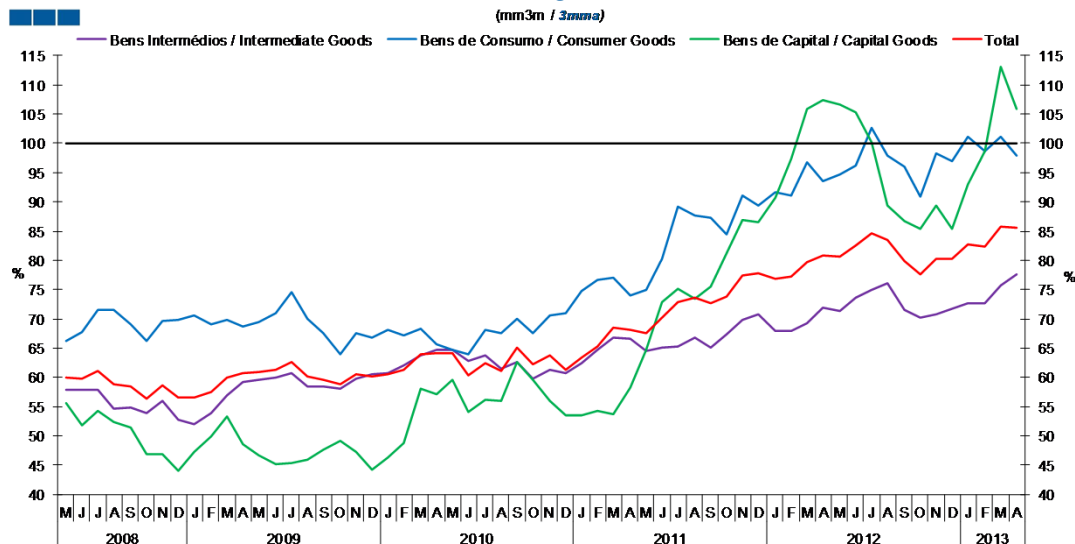
	2011												2012					2013						
	M	J	J	A	S	O	N	D	J	F	M	A	M	J	J	A	S	O	N	D	J	F	M	A
Bens Intermediários / Intermediate Goods	22.2	15.1	14.3	6.6	12.2	5.8	4.8	0.2	4.1	4.5	4.3	-2.9	-6.2	-7.0	-5.2	-1.8	-2.8	1.0	-1.7	-0.1	-4.9	-5.1	-7.9	-3.0
Bens de Consumo / Consumer Goods	-0.5	-6.7	-10.0	-10.2	-8.1	-9.4	-13.0	-14.6	-13.1	-13.0	-15.3	-18.0	-17.8	-14.2	-10.8	-8.6	-10.6	-6.0	-5.8	-4.3	-6.6	-6.8	-5.6	-2.7
Bens de Capital / Capital Goods	-5.4	-13.1	-15.1	-16.2	-8.5	-13.5	-19.7	-25.0	-22.2	-17.2	-16.2	-17.3	-17.9	-11.6	-7.4	5.9	0.1	4.2	-2.9	1.5	-0.4	-3.8	-7.0	-0.3
Total	11.6	1.8	0.2	-4.3	3.3	-1.2	-3.6	-10.2	-7.1	-6.1	-3.7	-8.8	-10.6	-9.4	-7.0	-3.1	-4.8	-0.8	-3.0	-1.2	-5.0	-5.5	-7.2	-2.7

Nota: Não inclui a série Outros Bens devido ao seu baixo valor relativo e elevada variabilidade.

Note: Does not include Other Goods because of its small relative value and high variability.

## 6. Classes Básicas de Bens do Sistema Europeu de Contas Nacionais / Basic Classes of Goods in the European System of Accounts

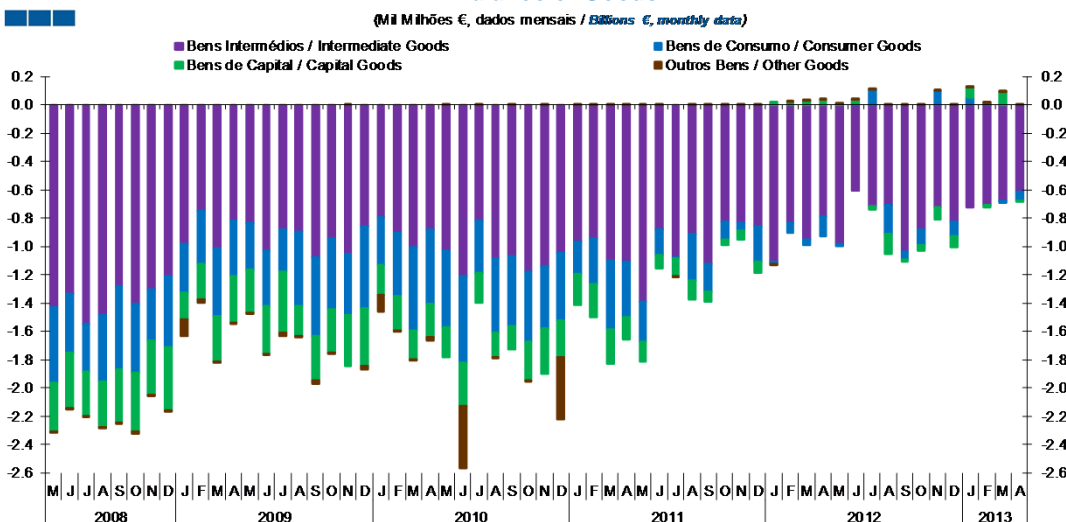
Gráfico / Graph 6.3.  
Taxa de Cobertura  
Coverage Rate



	2011				2012				2013															
	M	J	J	A	S	O	N	D	J	F	M	A	M	J	J	A	S	O	N	D	J	F	M	A
Bens Intermediários / Intermediate Goods	64.4	65.1	65.2	66.7	65.2	67.3	69.7	70.7	68.0	68.0	69.3	71.9	71.3	73.7	74.9	76.1	71.6	70.2	70.7	71.7	72.6	72.7	75.7	77.5
Bens de Consumo / Consumer Goods	75.0	80.3	89.1	87.6	87.3	84.4	91.0	89.4	91.7	91.1	96.8	93.6	94.8	96.2	102.7	97.9	96.1	90.8	98.4	97.0	101.2	98.8	101.1	97.8
Bens de Capital / Capital Goods	64.8	72.9	75.1	73.5	75.5	81.3	87.0	86.4	90.8	97.3	105.8	107.3	106.6	105.4	100.2	89.3	86.7	85.4	89.4	85.3	93.1	98.6	113.1	105.9
Total	67.5	70.1	72.8	73.5	72.6	73.7	77.5	77.8	76.9	77.2	79.7	80.8	80.5	82.6	84.7	83.5	79.8	77.5	80.2	80.3	82.6	82.3	85.8	85.6

Nota: Não inclui a série Outros Bens devido ao seu baixo valor relativo e elevada variabilidade.  
Note: Does not include Other Goods because of its small relative value and high variability.

Gráfico / Graph 6.4.  
Saldo de Bens  
Balance of Goods



	2011				2012				2013															
	M	J	J	A	S	O	N	D	J	F	M	A	M	J	J	A	S	O	N	D	J	F	M	A
Bens Intermediários / Intermediate Goods	-1.4	-0.9	-1.1	-0.9	-1.1	-0.8	-0.8	-0.9	-1.1	-0.8	-1.0	-0.8	-1.0	-0.6	-0.7	-0.7	-1.0	-0.9	-0.7	-0.8	-0.7	-0.7	-0.7	-0.6
Bens de Consumo / Consumer Goods	-0.3	-0.2	0.0	-0.3	-0.2	-0.1	-0.1	-0.3	0.0	-0.1	0.0	-0.1	0.0	0.0	0.1	-0.2	-0.1	-0.1	0.1	-0.1	0.1	0.1	0.0	-0.1
Bens de Capital / Capital Goods	-0.1	-0.1	-0.1	-0.1	-0.1	0.0	-0.1	-0.1	0.0	0.0	0.0	0.0	0.0	0.0	0.0	-0.1	0.0	0.0	-0.1	-0.1	0.1	0.0	0.1	0.0
Outros Bens / Other Goods	0.0	0.0	0.0	0.0	0.0	0.0	0.0	0.0	0.0	0.0	0.0	0.0	0.0	0.0	0.0	0.0	0.0	0.0	0.0	0.0	0.0	0.0	0.0	0.0
Total	-1.8	-1.1	-1.2	-1.4	-1.4	-1.0	-1.0	-1.2	-1.1	-0.9	-1.0	-0.9	-1.0	-0.6	-0.6	-1.1	-1.1	-1.0	-0.7	-1.0	-0.6	-0.7	-0.6	-0.7

## 6. Classes Básicas de Bens do Sistema Europeu de Contas Nacionais / Basic Classes of Goods in the European System of Accounts

Tabela / Table 1.1.  
Estrutura do Saldo  
Balance Structure

Milhões de euros \ Millions of euros

		2012		J		J		A		S		O		N		D		2013		J		F		M		A			
		M	J	J	A	S	O	N	D	J	F	M	A	M	J	F	M	A	M	J	F	M	A	M	A	M	A		
		M€	%	M€	%	M€	%	M€	%	M€	%	M€	%	M€	%	M€	%	M€	%	M€	%	M€	%	M€	%	M€	%	M€	%
<b>Bens Intermedios / Intermediate Goods</b>	Prod. alim. e bebidas / Foods and beverages	-144	15	-141	25	-151	24	-172	16	-170	15	-169	16	-137	19	-122	12	-131	22	-145	20	-161	27	-148	22				
	Forn. industriais NE noutra categoria / Industrial supplies NE specified	-24	2	-4	1	8	-1	85	-8	-12	1	4	0	-43	6	-68	7	7	-1	-72	10	23	-4	52	-8				
	Comb. e lubrificantes / Fuel and lubricants	-796	81	-460	81	-577	91	-680	65	-864	78	-717	70	-538	76	-624	62	-597	100	-539	76	-580	96	-532	78				
	Máquinas, outros bens de capital (Partes e acessórios) / Capital goods and parts and accessories	-79	8	-62	11	-54	9	-43	4	-57	5	-46	4	-53	7	-53	5	-55	9	-45	6	-27	4	-61	9				
	Material de transportes (Partes e acessórios) / Transport equipment (Parts and accessories)	64	-6	65	-12	60	-10	100	-10	64	-6	51	-5	48	-7	45	-4	53	-9	91	-13	73	-12	79	-12				
<b>Total</b>		<b>-978</b>	<b>99</b>	<b>-602</b>	<b>106</b>	<b>-714</b>	<b>113</b>	<b>-711</b>	<b>68</b>	<b>-1,039</b>	<b>94</b>	<b>-876</b>	<b>85</b>	<b>-723</b>	<b>102</b>	<b>-822</b>	<b>82</b>	<b>-724</b>	<b>121</b>	<b>-710</b>	<b>101</b>	<b>-672</b>	<b>112</b>	<b>-609</b>	<b>89</b>				
<b>Bens de Consumo / Consumption Goods</b>	Prod. alim. e bebidas destinados ao consumo dos particulares / Food and beverages mainly for household consumption	-136	14	-124	22	-105	17	-149	14	-93	8	-51	5	-50	7	-80	8	-74	12	-111	16	-110	18	-124	18				
	Material de transporte / Transport equipment	99	-10	53	-9	64	-10	-50	5	89	-8	-16	2	67	-9	-59	6	48	-8	33	-5	34	-6	22	-3				
	Bens de consumo NE noutra categoria / Consumption goods NE specified	16	-2	89	-16	146	-23	-3	0	-48	4	-45	4	82	-12	32	-3	78	-13	88	-13	54	-9	33	-5				
<b>Total</b>		<b>-21</b>	<b>2</b>	<b>18</b>	<b>-3</b>	<b>105</b>	<b>-17</b>	<b>-202</b>	<b>19</b>	<b>-52</b>	<b>5</b>	<b>-112</b>	<b>11</b>	<b>99</b>	<b>-14</b>	<b>-108</b>	<b>11</b>	<b>52</b>	<b>-9</b>	<b>11</b>	<b>-2</b>	<b>-22</b>	<b>4</b>	<b>-69</b>	<b>10</b>				
<b>Bens de Capital / Capital Goods</b>	Carburantes para motor / Motor spirit	38	-4	45	-8	40	-6	59	-6	29	-3	22	-2	-32	5	40	-4	89	-15	55	-8	99	-17	87	-13				
	Máquinas, outros bens de capital (exceto material de transporte) / Capital goods (except transport equipment)	-103	10	-95	17	-95	15	-63	6	-85	8	-104	10	-98	14	-154	15	-81	14	-70	10	-58	10	-69	10				
	Material de transportes destinado à indústria / Transport equipment, industrial	76	-8	68	-12	30	-5	-137	13	43	-4	39	-4	45	-6	35	-3	62	-10	6	-1	50	-8	-27	4				
<b>Total</b>		<b>10</b>	<b>-1</b>	<b>17</b>	<b>-3</b>	<b>-25</b>	<b>4</b>	<b>-141</b>	<b>13</b>	<b>-14</b>	<b>1</b>	<b>-43</b>	<b>4</b>	<b>-85</b>	<b>12</b>	<b>-78</b>	<b>8</b>	<b>70</b>	<b>-12</b>	<b>-9</b>	<b>1</b>	<b>92</b>	<b>-15</b>	<b>-9</b>	<b>1</b>				
<b>Outros / Others</b>		<b>1</b>	<b>0</b>	<b>1</b>	<b>0</b>	<b>1</b>	<b>0</b>	<b>1</b>	<b>0</b>	<b>2</b>	<b>0</b>	<b>2</b>	<b>0</b>	<b>3</b>	<b>0</b>	<b>1</b>	<b>0</b>	<b>1</b>	<b>0</b>	<b>2</b>	<b>0</b>	<b>1</b>	<b>0</b>	<b>3</b>	<b>0</b>				
<b>Total</b>		<b>-988</b>	<b>100</b>	<b>-566</b>	<b>100</b>	<b>-632</b>	<b>100</b>	<b>-1,052</b>	<b>100</b>	<b>-1,103</b>	<b>100</b>	<b>-1,029</b>	<b>100</b>	<b>-706</b>	<b>100</b>	<b>-1,008</b>	<b>100</b>	<b>-600</b>	<b>100</b>	<b>-706</b>	<b>100</b>	<b>-601</b>	<b>100</b>	<b>-684</b>	<b>100</b>				

## 7. Índice GEE de Comércio Internacional de Bens / *GEE Index of International Trade of Goods*

Gráfico / *Graph* 7.1.  
Total

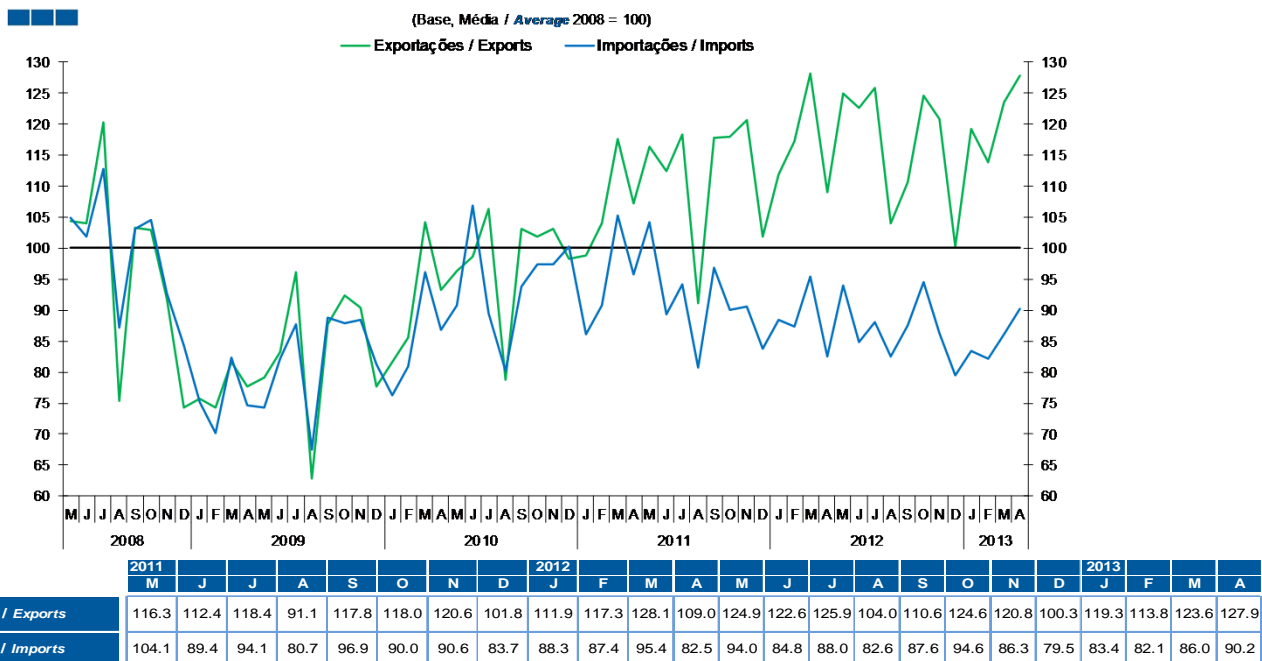
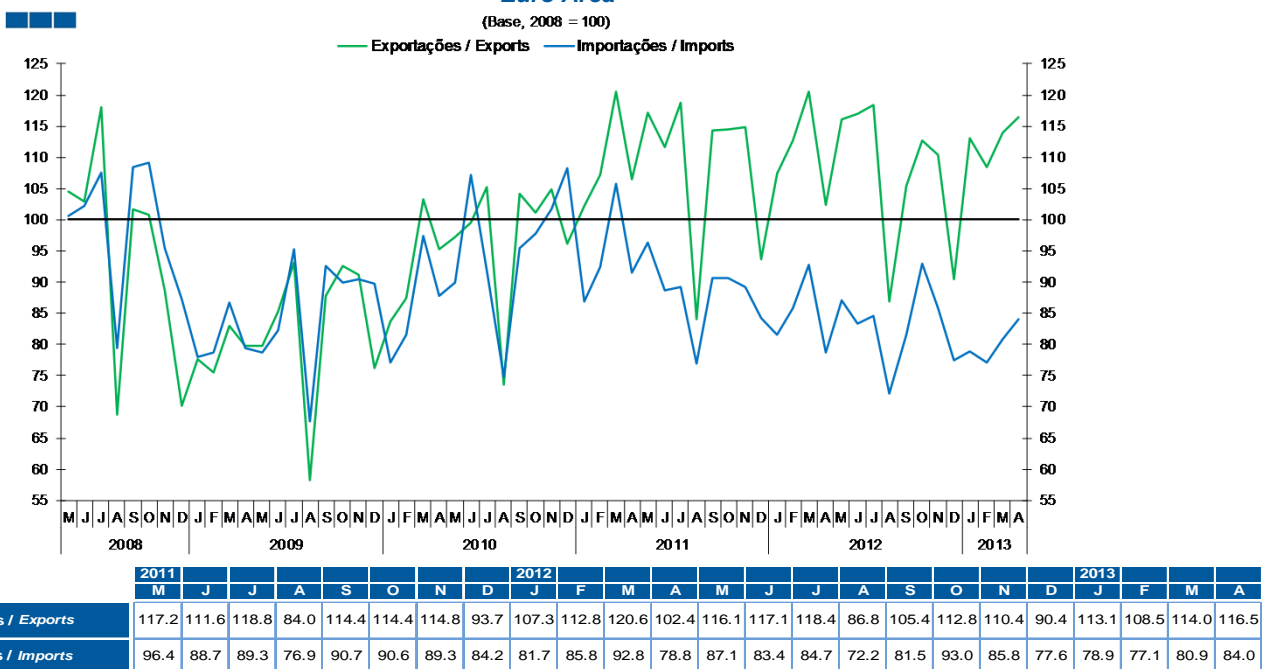
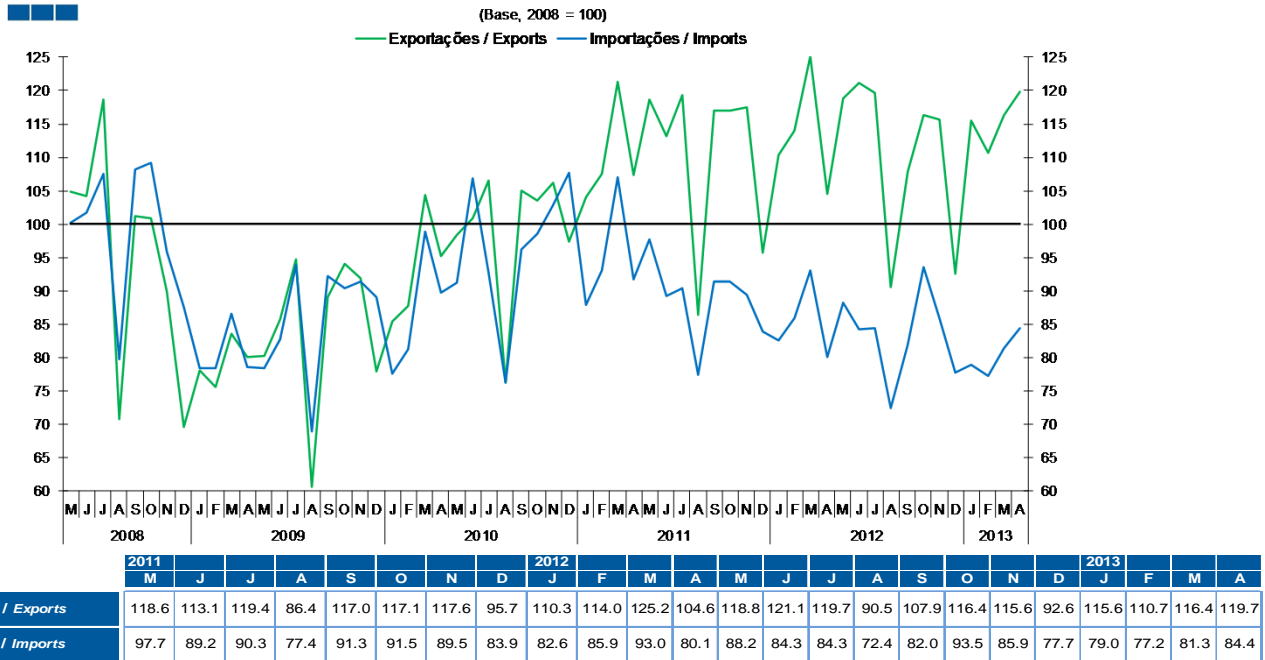


Gráfico / *Graph* 7.2.  
Zona Euro  
*Euro Area*



## 7. Índice GEE de Comércio Internacional de Bens / *GEE Index of International Trade of Goods*

**Gráfico / Graph 7.3.**  
**Intracomunitário**  
*Intra-Community*



**Gráfico / Graph 7.4.**  
**Extracomunitário**  
*Extra-Community*

