

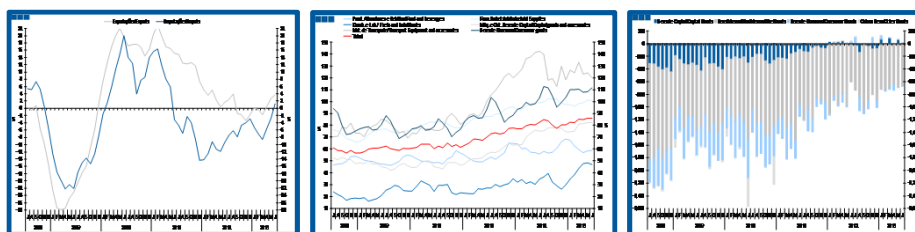
Estatísticas Temáticas de Conjuntura

Short-term Thematic Statistics

- Nº 8/2013 -

9 de Agosto de 2013

August, 09, 2013



Comércio Internacional de Bens

International Trade of Goods

- Junho de 2013 -

- June, 2013 -

Fonte: Instituto Nacional de Estatística

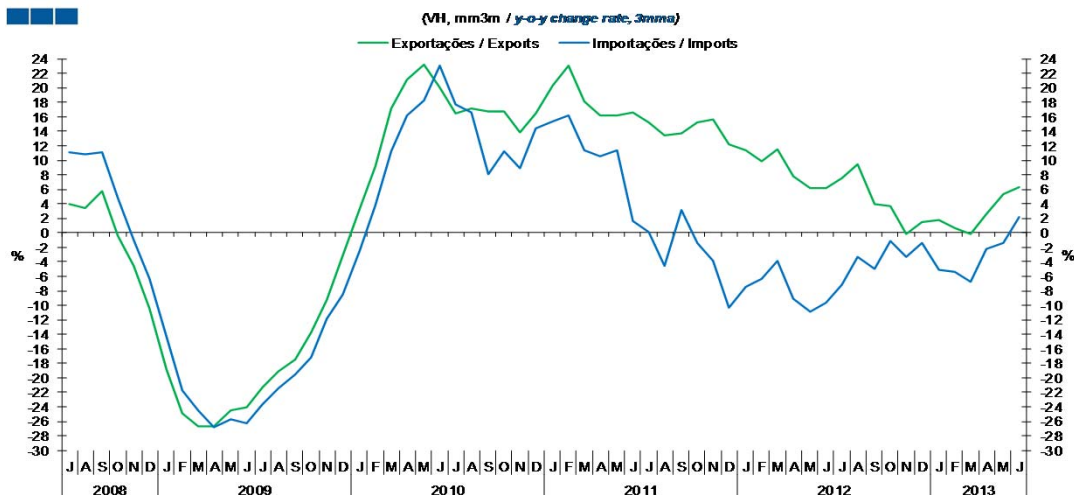
Source: Statistics Portugal

Índice / *Index*

	Página / <i>Page</i>
1. Total	
Importações e Exportações / <i>Imports and Exports</i>	3
Taxa de Cobertura / <i>Coverage Rate</i>	3
Saldo / <i>Balance</i>	4
2. Zona Euro-17 / <i>Euro Area-17</i>	
Importações e Exportações / <i>Imports and Exports</i>	5
Taxa de Cobertura / <i>Coverage Rate</i>	5
Saldo / <i>Balance</i>	6
3. Intracomunitário / <i>Intra-Community</i>	
Importações e Exportações / <i>Imports and Exports</i>	7
Taxa de Cobertura / <i>Coverage Rate</i>	7
Saldo / <i>Balance</i>	8
4. Extracomunitário / <i>Extra-Community</i>	
Importações e Exportações / <i>Imports and Exports</i>	9
Taxa de Cobertura / <i>Coverage Rate</i>	9
Saldo / <i>Balance</i>	10
5. Grandes Categorias Económicas / <i>Broad Economic Categories</i>	
Exportações / <i>Exports</i>	11
Importações / <i>Imports</i>	11
Taxa de Cobertura / <i>Coverage Rate</i>	12
Saldo / <i>Balance</i>	12
6. Classes Básicas de Bens do Sistema Europeu de Contas Nacionais / <i>Basic Classes of Goods in the European System of Accounts</i>	
Exportações / <i>Exports</i>	13
Importações / <i>Imports</i>	13
Taxa de Cobertura / <i>Coverage Rate</i>	14
Saldo / <i>Balance</i>	14
Estrutura do Saldo / <i>Balance Structure</i>	15
7. Índice GEE de Comércio Internacional de Bens / <i>GEE Index of International Trade of Goods</i>	
Total / <i>Total</i>	16
Zona Euro / <i>Euro Area</i>	16
Intracomunitário / <i>Intra-Community</i>	17
Extracomunitário / <i>Extra-Community</i>	17

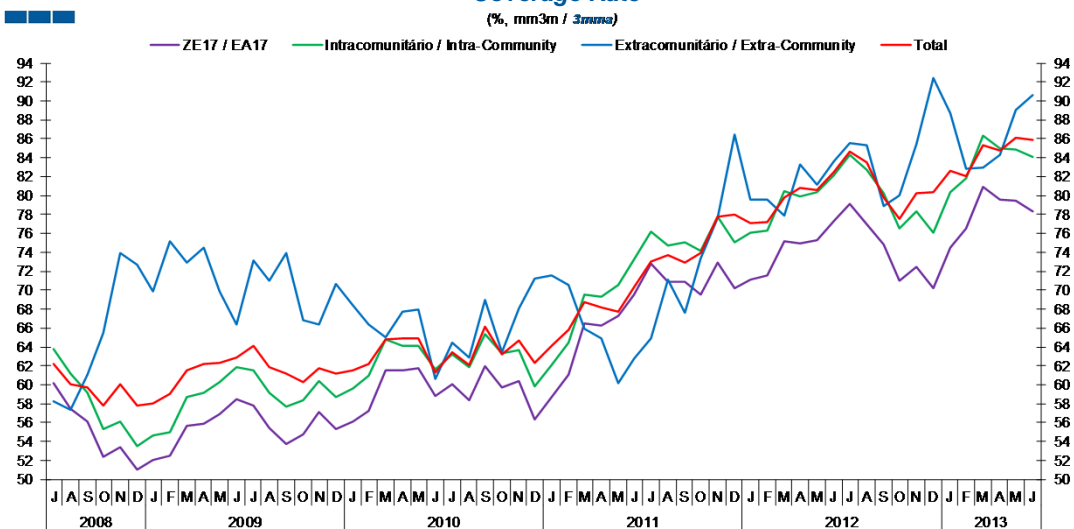
1. Total

Gráfico / Graph 1.1.
Importações e Exportações
Imports and Exports



	2011					2012												2013						
	J	A	S	O	N	D	J	F	M	A	M	J	J	A	S	O	N	D	J	F	M	A	M	J
Exportações / Exports	15.2	13.5	13.6	15.2	15.7	12.2	11.3	9.9	11.5	7.8	6.1	6.1	7.6	9.5	4.0	3.7	-0.1	1.5	1.8	0.7	-0.2	2.6	5.3	6.3
Importações / Imports	0.1	-4.5	3.1	-1.4	-3.8	-10.4	-7.4	-6.4	-3.9	-9.0	-10.8	-9.6	-7.2	-3.3	-5.0	-1.1	-3.3	-1.5	-5.1	-5.3	-6.8	-2.2	-1.5	2.1

Gráfico / Graph 1.2.
Taxa de Cobertura
Coverage Rate

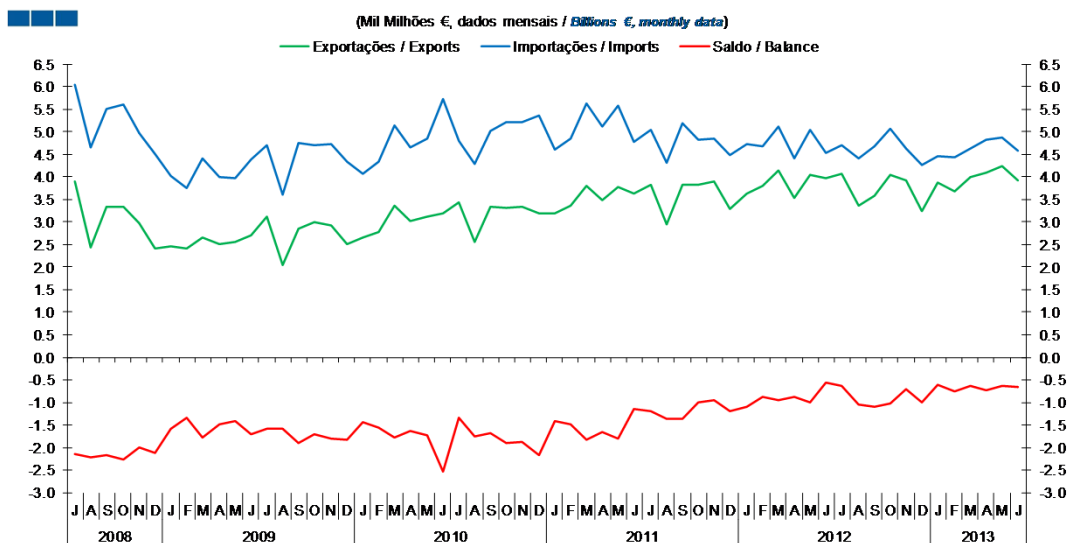


Fonte / Source: INE

	2011					2012												2013						
	J	A	S	O	N	D	J	F	M	A	M	J	J	A	S	O	N	D	J	F	M	A	M	J
ZE 17 / EA 17	72.7	70.8	70.9	69.6	72.9	70.2	71.1	71.6	75.2	74.9	75.3	77.3	79.1	77.0	74.8	71.0	72.5	70.3	74.4	76.5	80.9	79.5	79.5	78.3
Intracomunitário / Intra-community	76.2	74.7	75.0	74.2	77.7	75.1	76.1	76.3	80.4	79.9	80.3	82.1	84.3	82.8	80.2	76.5	78.3	76.0	80.4	81.8	86.4	85.0	84.9	84.0
Extracomunitário / Extra-community	64.9	71.1	67.6	73.3	77.7	86.5	79.5	79.6	77.9	83.3	81.1	83.7	85.6	85.3	78.9	80.0	85.4	92.4	88.7	82.8	83.0	84.2	89.0	90.6
Total	73.1	73.7	72.9	73.9	77.7	78.0	77.0	77.2	79.7	80.8	80.5	82.6	84.7	83.5	79.8	77.5	80.2	80.3	82.6	82.1	85.4	84.8	86.1	85.9

1. Total

Gráfico / Graph 1.3.
 Saldo
 Balance



	2011			2012					2013															
	J	A	S	O	N	D	J	F	M	A	M	J	J	A	S	O	N	D	J	F	M	A	M	J
Exportações / Exports	3.8	2.9	3.8	3.8	3.9	3.3	3.6	3.8	4.1	3.5	4.0	4.0	4.1	3.4	3.6	4.0	3.9	3.2	3.9	3.7	4.0	4.1	4.2	3.9
Importações / Imports	5.0	4.3	5.2	4.8	4.8	4.5	4.7	4.7	5.1	4.4	5.0	4.5	4.7	4.4	4.7	5.1	4.6	4.3	4.5	4.4	4.6	4.8	4.9	4.6
Saldo / Balance	-1.2	-1.4	-1.4	-1.0	-0.9	-1.2	-1.1	-0.9	-1.0	-0.9	-1.0	-0.6	-0.6	-1.1	-1.1	-1.0	-0.7	-1.0	-0.6	-0.7	-0.6	-0.7	-0.6	-0.7

2. Zona Euro-17 / Euro Area-17

Gráfico / Graph 2.1.
 Importações e Exportações
 Imports and Exports

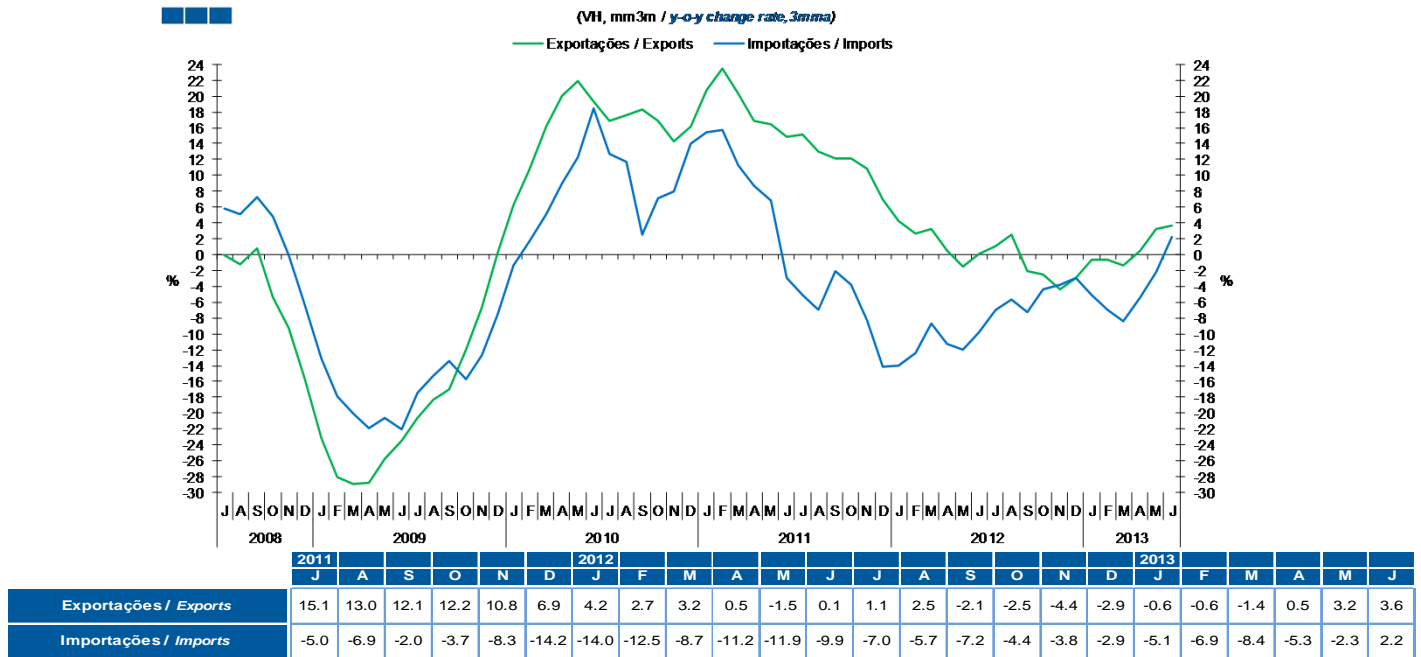
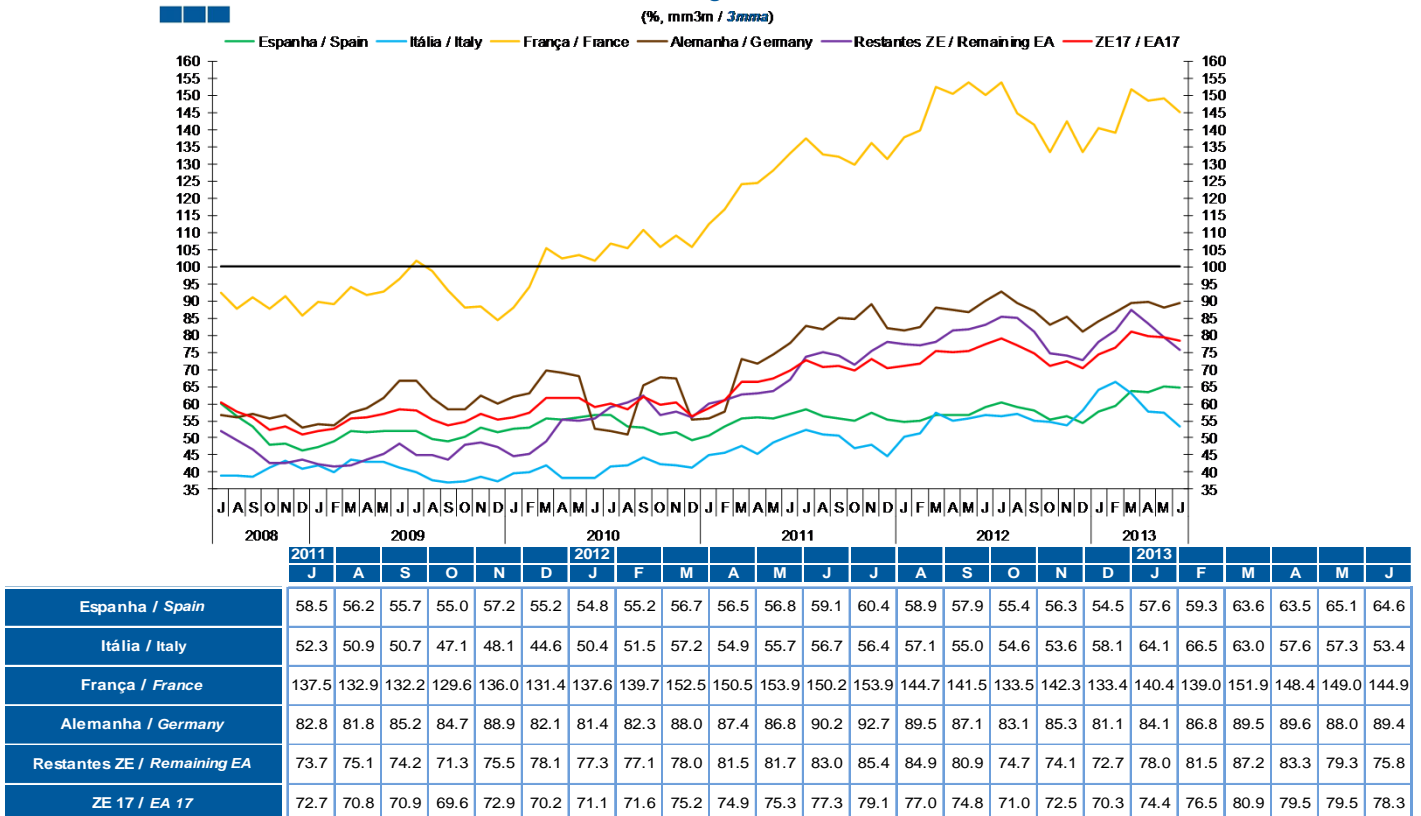
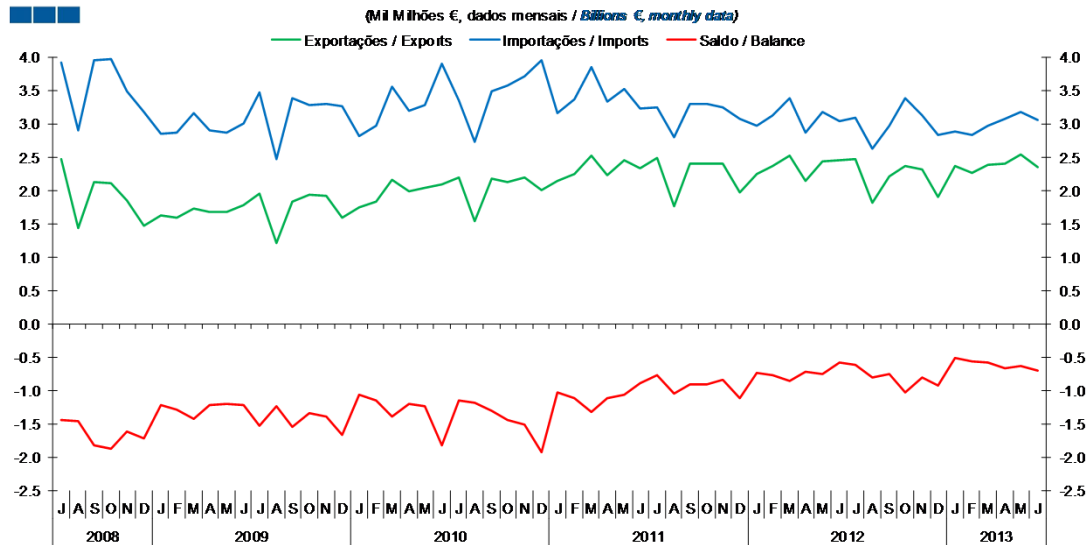


Gráfico / Graph 2.2.
 Taxa de Cobertura
 Coverage Rate



2. Zona Euro-17 / Euro Area-17

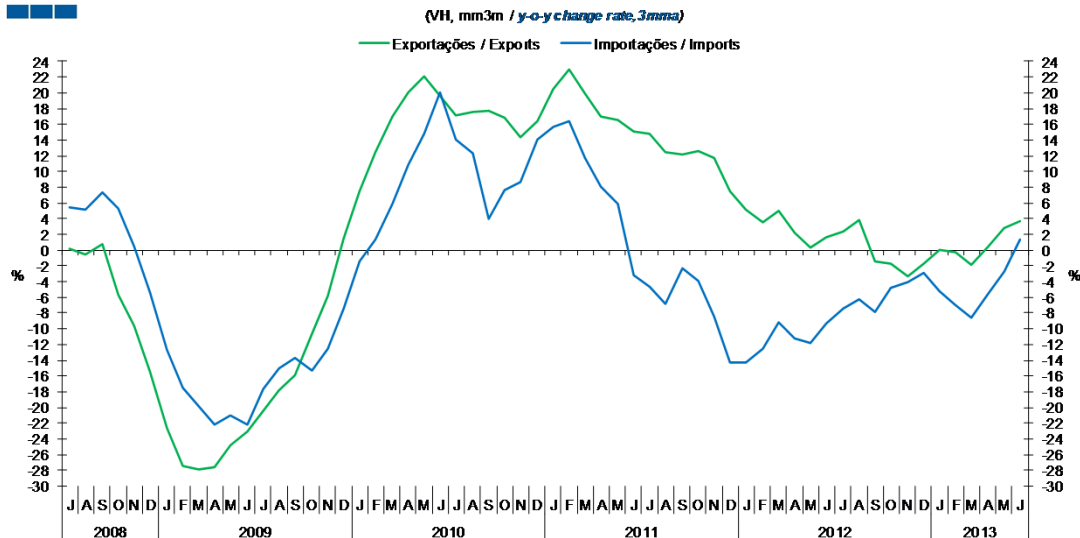
Gráfico / Graph 2.3.
 Saldo
 Balance



	2011		2012					2013																
	J	A	S	O	N	D	J	F	M	A	M	J	J	A	S	O	N	D	J	F	M	A	M	J
Exportações / Exports	2.5	1.8	2.4	2.4	2.4	2.0	2.2	2.4	2.5	2.1	2.4	2.4	2.5	1.8	2.2	2.4	2.3	1.9	2.4	2.3	2.4	2.4	2.5	2.3
Importações / Imports	3.3	2.8	3.3	3.3	3.3	3.1	3.0	3.1	3.4	2.9	3.2	3.0	3.1	2.6	3.0	3.4	3.1	2.8	2.9	2.8	3.0	3.1	3.2	3.0
Saldo / Balance	-0.8	-1.0	-0.9	-0.9	-0.8	-1.1	-0.7	-0.8	-0.9	-0.7	-0.7	-0.6	-0.6	-0.8	-0.8	-1.0	-0.8	-0.9	-0.5	-0.6	-0.6	-0.7	-0.6	-0.7

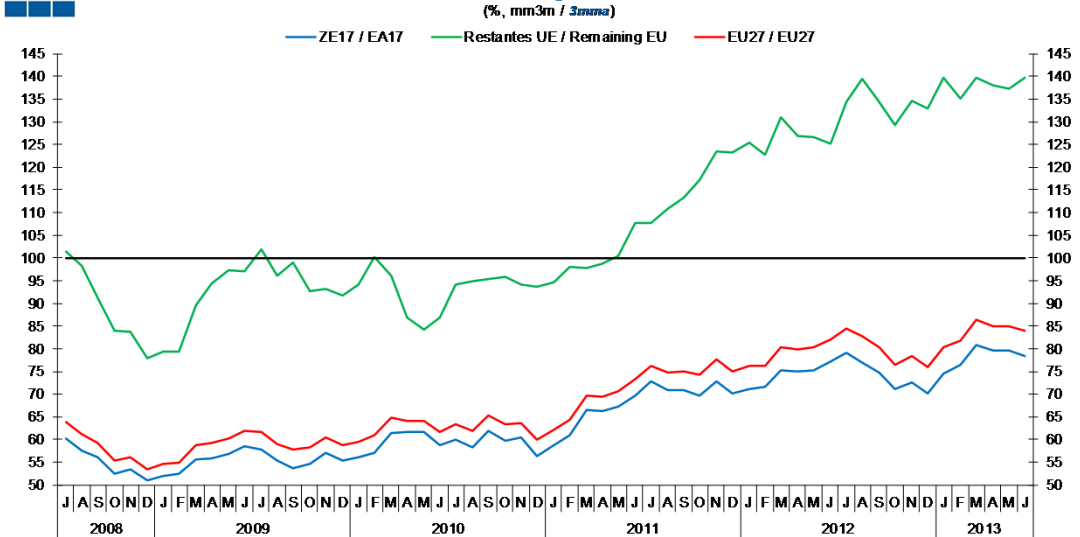
3. Intracomunitário / Intra-Community

Gráfico / Graph 3.1.
 Importações e Exportações
 Imports and Exports



	2011			2012					2013															
	J	A	S	O	N	D	J	F	M	A	M	J	J	A	S	O	N	D	J	F	M	A	M	J
Exportações / Exports	14.9	12.5	12.2	12.6	11.7	7.5	5.2	3.6	5.0	2.3	0.4	1.6	2.4	3.9	-1.4	-1.8	-3.3	-1.7	0.1	-0.3	-1.8	0.5	2.8	3.6
Importações / Imports	-4.7	-6.9	-2.3	-4.0	-8.5	-14.3	-14.2	-12.5	-9.2	-11.2	-11.9	-9.4	-7.4	-6.2	-7.8	-4.7	-4.0	-2.9	-5.2	-7.0	-8.6	-5.5	-2.8	1.3

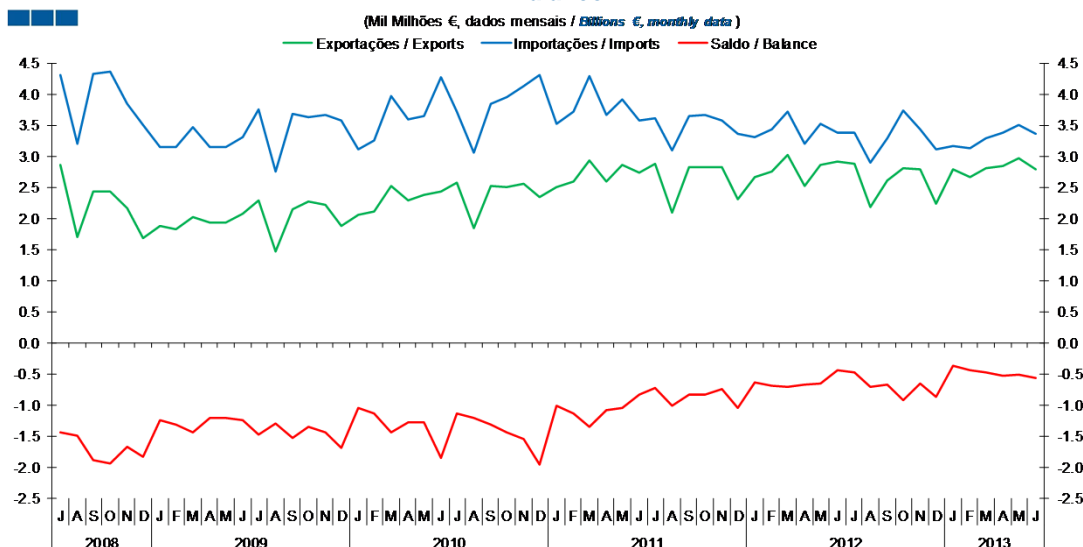
Gráfico / Graph 3.2.
 Taxa de Cobertura
 Coverage Rate



	2011					2012					2013													
	J	A	S	O	N	D	J	F	M	A	M	J	J	A	S	O	N	D	J	F	M	A	M	J
ZE 17 / EA 17	72.7	70.8	70.9	69.6	72.9	70.2	71.1	71.6	75.2	74.9	75.3	77.3	79.1	77	74.8	71	72.5	70.3	74.4	76.5	80.9	79.5	79.5	78.3
UE 27 / EU 27	76.2	74.7	75	74.2	77.7	75.1	76.1	76.3	80.4	79.9	80.3	82.1	84.3	82.8	80.2	76.5	78.3	76	80.4	81.8	86.4	85	84.9	84.0
Restantes UE / Remaining EU	107.8	111.0	113.2	117.1	123.5	123.3	125.3	122.7	131.0	126.9	126.6	125.2	134.4	139.6	134.3	129.3	134.7	133.0	139.6	135.2	139.8	138.1	137.2	139.7

3. Intracomunitário / Intra-Community

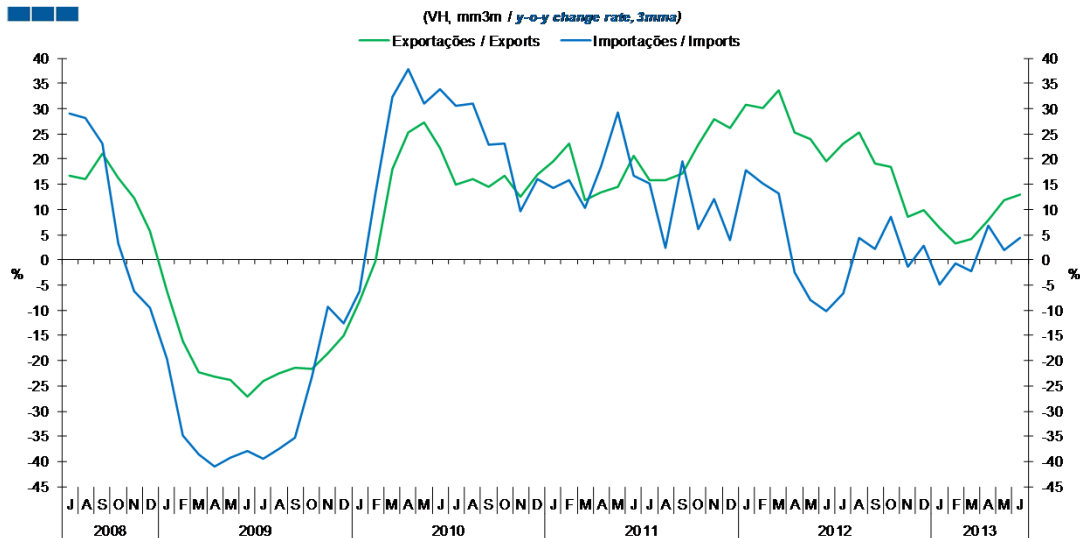
Gráfico / Graph 3.3.
 Saldo
 Balance



	2011			2012					2013															
	J	A	S	O	N	D	J	F	M	A	M	J	J	A	S	O	N	D	J	F	M	A	M	J
Exportações / Exports	2.9	2.1	2.8	2.8	2.8	2.3	2.7	2.7	3.0	2.5	2.9	2.9	2.9	2.2	2.6	2.8	2.8	2.2	2.8	2.7	2.8	3.0	2.8	
Importações / Imports	3.6	3.1	3.7	3.7	3.6	3.4	3.3	3.4	3.7	3.2	3.5	3.4	3.4	2.9	3.3	3.7	3.4	3.1	3.2	3.1	3.3	3.4	3.5	3.4
Saldo / Balance	-0.7	-1.0	-0.8	-0.8	-0.7	-1.0	-0.7	-0.7	-0.7	-0.7	-0.7	-0.5	-0.5	-0.7	-0.7	-0.9	-0.7	-0.9	-0.4	-0.5	-0.5	-0.5	-0.5	-0.6

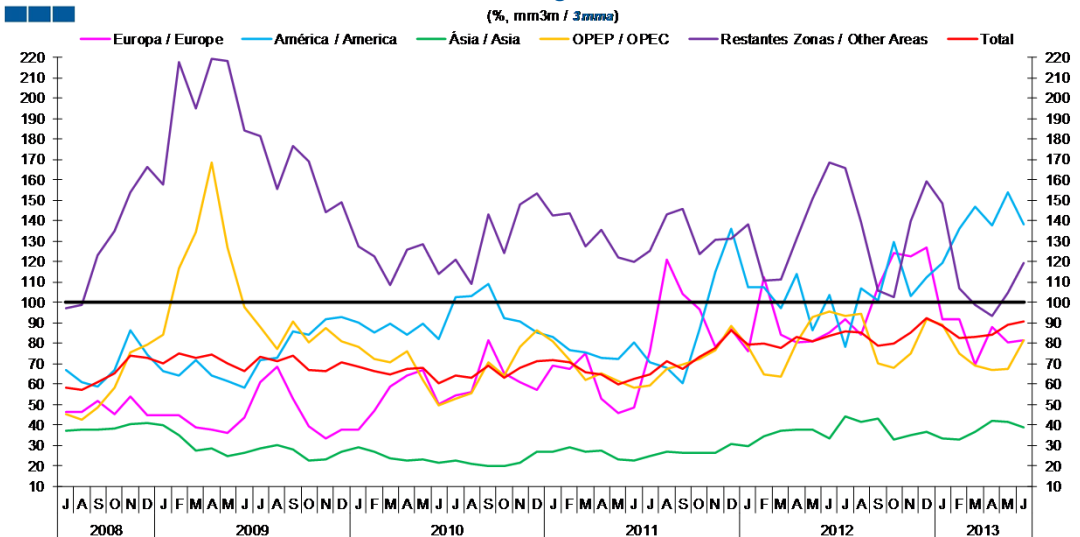
4. Extracomunitário / Extra-Community

Gráfico / Graph 4.1.
 Importações e Exportações
 Imports and Exports



	2011					2012					2013													
	J	A	S	O	N	D	J	F	M	A	M	J	J	A	S	O	N	D	J	F	M	A	M	J
Exportações / Exports	15.9	15.8	17.2	22.8	27.9	26.2	30.9	30.0	33.6	25.2	24.0	19.7	23.2	25.3	19.0	18.5	8.6	9.9	6.2	3.2	4.1	8.0	11.8	13.0
Importações / Imports	15.1	2.5	19.6	6.2	12.0	4.0	17.7	15.1	13.1	-2.6	-8.1	-10.3	-6.6	4.4	2.1	8.6	-1.3	2.9	-4.8	-0.8	-2.3	6.8	1.9	4.3

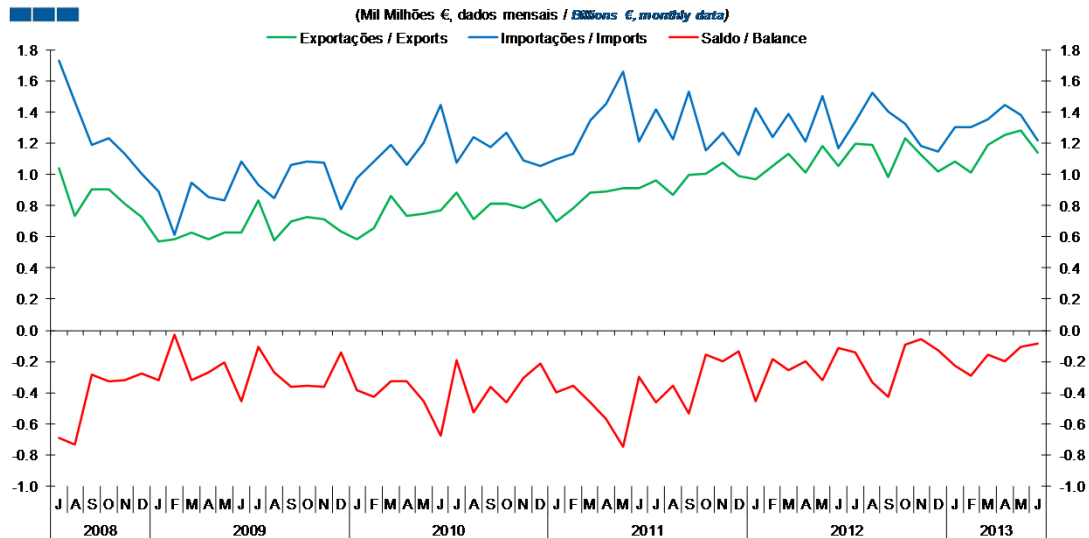
Gráfico / Graph 4.2.
 Taxa de Cobertura
 Coverage Rate



	2011					2012					2013													
	J	A	S	O	N	D	J	F	M	A	M	J	J	A	S	O	N	D	J	F	M	A	M	J
Europa / Europe	75.9	120.7	104.3	96.6	78.4	86.6	76.0	112.4	84.2	80.6	80.9	85.4	91.6	84.0	107.7	123.9	122.6	127.0	91.7	91.5	69.7	88.2	80.4	81.5
América / America	70.4	67.9	60.7	87.1	114.7	136.2	107.1	107.6	97.0	114.0	86.4	103.7	78.4	107.1	100.8	129.6	103.0	112.1	119.5	135.9	146.6	137.7	153.8	138.0
Ásia / Asia	24.7	26.7	26.6	26.5	26.2	30.5	29.7	34.5	37.4	38.0	38.0	33.5	44.0	41.5	43.4	33.1	35.2	36.5	33.4	33.1	36.9	42.0	41.3	38.7
OPEP / OPEC	59.3	67.6	69.7	72.3	76.9	88.6	78.4	65.0	63.9	80.6	92.6	95.3	93.1	94.2	70.2	67.8	74.8	91.9	89.1	75.3	69.0	67.0	67.7	81.5
Restantes Zonas / Other Areas	125.3	143.0	145.7	123.8	130.6	131.2	138.1	110.8	111.4	131.3	150.7	168.3	165.6	139.2	105.5	102.6	139.7	159.1	148.7	106.8	98.7	93.3	104.9	119.4
Total	64.9	71.1	67.6	73.3	77.7	86.5	79.5	79.6	77.9	83.3	81.1	83.7	85.6	85.3	78.9	80.0	85.4	92.4	88.7	82.8	83.0	84.2	89.0	90.6

4. Extracomunitário / Extra-Community

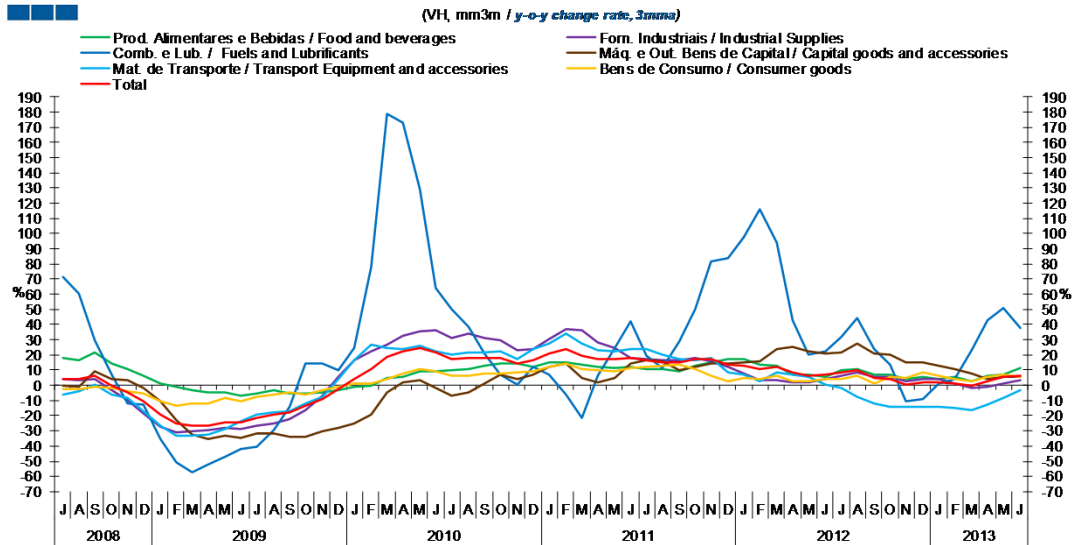
Gráfico / Graph 4.3.
 Saldo
 Balance



	2011					2012					2013													
	J	A	S	O	N	D	J	F	M	A	M	J	J	A	S	O	N	D	J	F	M	A	M	J
Exportações / Exports	1.0	0.9	1.0	1.0	1.1	1.0	1.0	1.1	1.1	1.0	1.2	1.1	1.2	1.2	1.0	1.2	1.1	1.0	1.1	1.0	1.2	1.3	1.3	1.1
Importações / Imports	1.4	1.2	1.5	1.2	1.3	1.1	1.4	1.2	1.4	1.2	1.5	1.2	1.3	1.5	1.4	1.3	1.2	1.1	1.3	1.3	1.3	1.4	1.4	1.2
Saldo / Balance	-0.5	-0.4	-0.5	-0.2	-0.2	-0.1	-0.5	-0.2	-0.3	-0.2	-0.3	-0.1	-0.1	-0.3	-0.4	-0.1	-0.1	-0.1	-0.2	-0.3	-0.2	-0.2	-0.1	-0.1

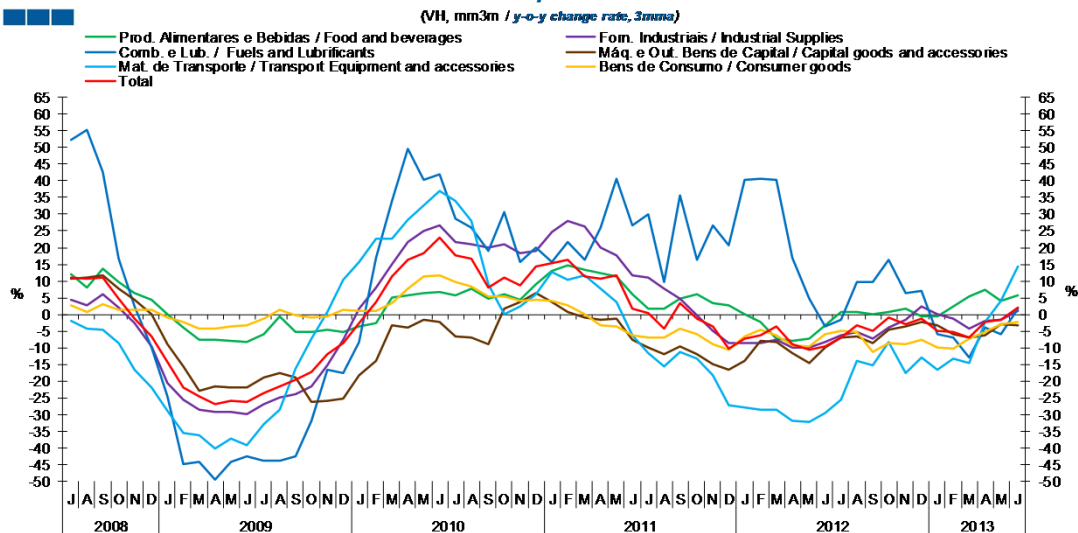
5. Grandes Categorias Económicas / Broad Economic Categories

Gráfico / Graph 5.1.
Exportações
Exports



	2011					2012					2013													
	J	A	S	O	N	D	J	F	M	A	M	J	J	A	S	O	N	D	J	F	M	A	M	J
Produtos Alimentares e Bebidas / Food and Beverages	11.0	10.9	9.4	13.0	14.8	17.5	17.3	13.8	13.0	7.2	7.2	5.5	10.0	11.0	7.0	7.1	3.8	5.3	4.2	5.8	2.8	6.3	6.7	11.4
Comb. e Lub. / Fuels and Lubricants	19.7	11.5	28.6	50.1	81.9	83.5	97.5	116.0	94.1	42.8	20.3	22.1	32.0	44.5	23.6	13.4	-10.4	-8.7	0.8	4.2	22.9	42.6	50.9	37.7
Mat. de Transporte / Transport equipment and accessories	23.6	19.8	17.4	16.7	18.2	8.7	6.7	2.4	8.5	7.0	5.4	0.8	-1.5	-7.3	-11.8	-14.3	-13.9	-14.3	-14.1	-15.2	-16.5	-12.4	-8.4	-3.4
Forn. Industriais / Industrial Supplies	17.4	16.2	16.5	18.2	16.0	12.0	7.4	3.7	3.3	2.0	2.0	4.1	6.4	8.5	5.2	5.4	2.4	4.1	4.0	1.4	-2.0	-1.4	1.3	3.0
Máq. e Out. Bens de Capital / Capital Goods and Accessories	16.3	16.1	10.1	12.1	14.3	14.2	14.7	16.1	23.9	25.0	22.5	21.2	22.0	27.6	21.0	20.2	15.0	15.0	13.2	10.7	7.8	4.3	5.5	5.8
Bens de Consumo / Consumer Goods	12.3	13.1	13.6	10.6	6.0	2.8	4.6	4.3	6.1	2.7	2.6	3.8	3.8	6.2	1.1	5.6	5.1	8.1	6.5	4.4	3.0	5.2	7.0	5.8
Total	16.9	15.3	15.3	16.9	17.2	13.9	12.7	10.9	12.0	8.3	6.6	6.7	8.1	10.1	4.6	4.3	0.4	2.0	2.1	0.8	-0.2	2.6	5.3	6.3

Gráfico / Graph 5.2.
Importações
Imports



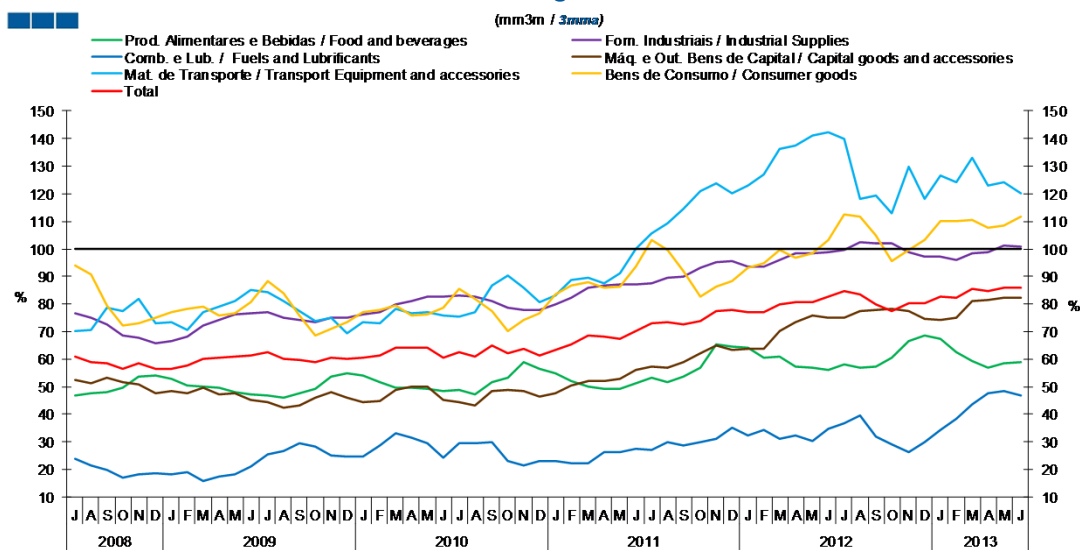
	2011					2012					2013													
	J	A	S	O	N	D	J	F	M	A	M	J	J	A	S	O	N	D	J	F	M	A	M	J
Produtos Alimentares e Bebidas / Food and Beverages	1.8	1.6	4.9	6.0	3.5	2.7	0.0	-2.2	-7.3	-8.1	-7.4	-3.2	0.7	0.7	0.2	0.8	1.8	-0.4	-0.5	2.4	5.3	7.4	4.0	5.7
Comb. e Lub. / Fuels and Lubricants	29.8	9.6	35.6	16.3	26.6	20.8	40.3	40.6	40.2	17.0	4.7	-3.6	-1.6	9.6	9.9	16.5	6.4	7.2	-5.8	-7.0	-12.8	-3.8	-5.8	1.6
Mat. de Transporte / Transport equipment and accessories	-11.6	-15.6	-11.1	-13.1	-18.2	-27.1	-27.8	-28.6	-28.6	-31.9	-32.1	-29.4	-25.6	-14.0	-15.3	-8.1	-17.7	-12.9	-16.5	-13.2	-14.6	-2.1	4.1	14.5
Forn. Industriais / Industrial Supplies	11.2	7.6	4.8	-0.2	-4.9	-8.6	-8.4	-8.6	-7.5	-10.1	-9.8	-8.2	-6.4	-5.2	-7.2	-3.8	-1.5	2.3	0.0	-1.4	-4.3	-2.0	-1.5	1.2
Máq. e Out. Bens de Capital / Capital Goods and Accessories	-10.0	-11.8	-9.4	-12.0	-14.9	-16.6	-13.8	-7.9	-8.1	-11.5	-14.5	-9.9	-7.0	-6.5	-8.7	-4.5	-3.5	-2.3	-3.2	-6.0	-6.9	-6.2	-2.9	-3.2
Bens de Consumo / Consumer Goods	-7.0	-6.9	-4.3	-5.8	-8.9	-10.7	-6.5	-4.7	-6.1	-9.1	-9.7	-5.9	-4.8	-5.2	-11.2	-8.6	-8.9	-7.6	-9.8	-10.1	-7.3	-5.3	-2.9	-2.3
Total	0.2	-4.3	3.3	-1.2	-3.6	-10.2	-7.1	-6.1	-3.7	-8.8	-10.6	-9.4	-7.0	-3.1	-4.8	-0.8	-3.0	-1.2	-5.0	-5.3	-6.8	-2.2	-1.5	2.1

Nota: Não inclui Bens N.E. Noutra Categoria devido ao seu reduzido valor relativo e elevada variabilidade.

Note: Does not include Goods Not Elsewhere Specified because of its small relative value and high variability

5. Grandes Categorias Económicas / Broad Economic Categories

Gráfico / Graph 5.3.
 Taxa de Cobertura
 Coverage Rate

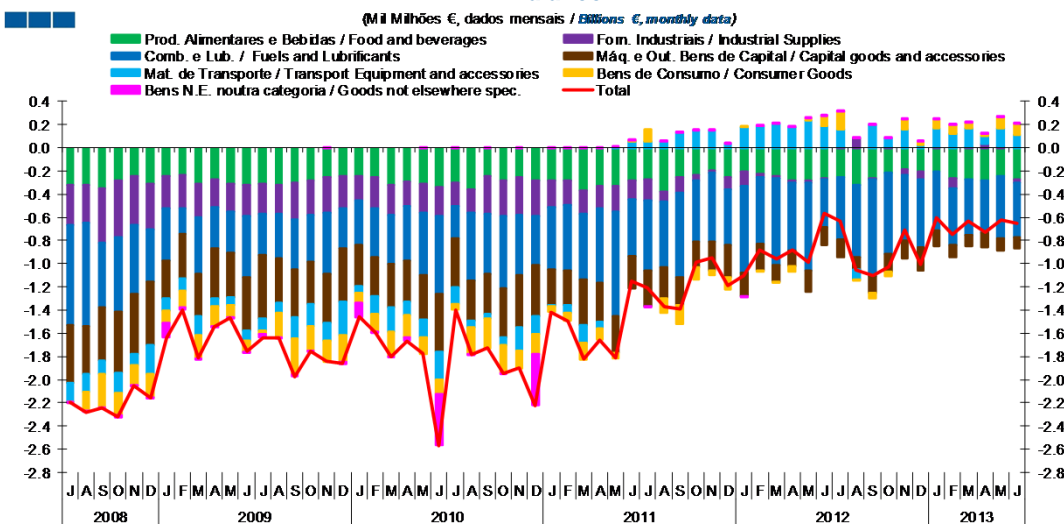


	2011		2009					2010					2011					2012					2013																
	J	A	S	O	N	D	J	F	M	A	M	J	J	A	S	O	N	D	J	F	M	A	M	J	J	A	S	O	N	D	J	F	M	A	M	J			
Produtos Alimentares e Bebidas / Food and Beverages	53.3	51.5	53.8	56.9	65.2	64.7	64.3	60.4	60.8	57.4	57.0	55.9	58.2	56.8	57.5	60.5	66.4	68.4	67.4	62.4	59.4	56.8	58.5	59.0															
Comb. e Lub. / Fuels and Lubricants	27.2	30.1	28.5	29.9	31.0	35.1	32.2	34.2	30.9	32.3	30.1	34.6	36.5	39.6	32.1	29.1	26.1	29.9	34.5	38.3	43.6	47.8	48.3	46.9															
Mat. de Transporte / Transport equipment and accessories	105.7	109.5	114.6	121.0	123.9	120.3	123.0	127.0	136.1	137.4	141.2	142.5	139.9	118.0	119.3	112.9	129.7	118.3	126.6	124.1	133.1	123.0	124.2	120.3															
Forn. Industriais / Industrial Supplies	87.6	89.4	90.1	93.2	95.0	95.5	93.6	93.5	95.9	98.4	98.5	98.9	99.5	102.3	102.2	102.0	98.7	97.3	97.3	96.1	98.2	99.0	101.3	100.6															
Máq. e Out. Bens de Capital / Capital Goods and Accessories	57.2	56.9	58.7	62.1	64.8	63.4	63.6	63.8	70.0	73.3	75.8	75.2	75.0	77.6	77.8	78.2	77.3	74.5	74.4	75.1	81.0	81.5	82.4	82.1															
Bens de Consumo / Consumer Goods	103.4	99.7	91.9	82.6	86.2	88.4	93.2	94.7	99.5	97.0	98.3	103.0	112.7	111.6	104.7	95.4	99.4	103.4	110.0	109.9	110.4	107.7	108.4	111.5															
Total	72.8	73.5	72.6	73.7	77.5	77.8	76.9	77.2	79.7	80.8	80.5	82.6	84.7	83.5	79.8	80.2	80.3	82.6	82.1	85.4	84.8	86.1	85.9																

Nota: Não inclui Bens N.E. Outra Categoria devido ao seu reduzido valor relativo e elevada variabilidade.

Note: Does not include Goods Not Elsewhere Specified because of its small relative value and high variability

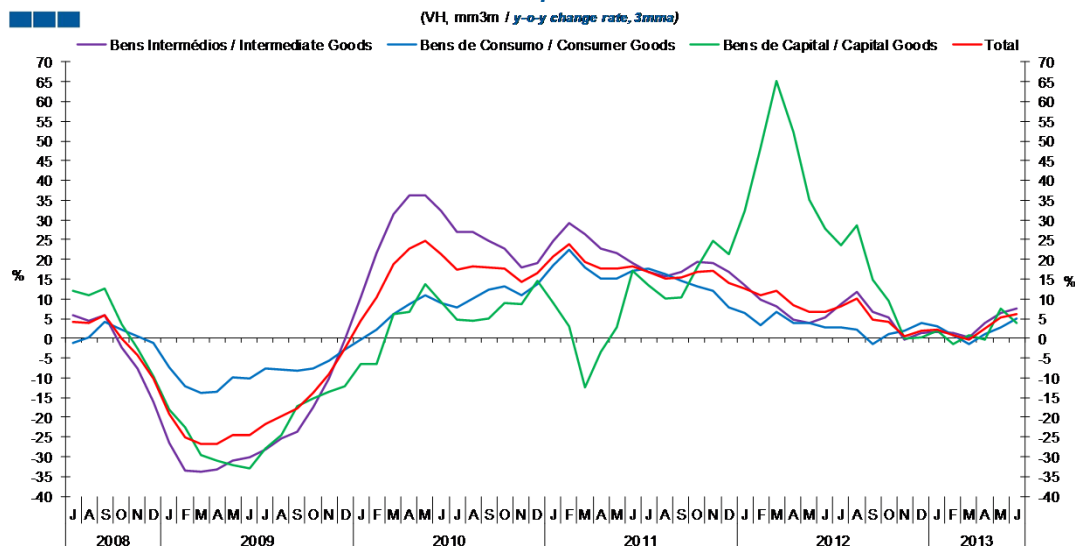
Gráfico / Graph 5.4.
 Saldo
 Balance



	2011		2009					2010					2011					2012					2013																
	J	A	S	O	N	D	J	F	M	A	M	J	J	A	S	O	N	D	J	F	M	A	M	J	J	A	S	O	N	D	J	F	M	A	M	J			
Produtos Alimentares e Bebidas / Food and Beverages	-0.3	-0.4	-0.3	-0.2	-0.2	-0.3	-0.2	-0.2	-0.2	-0.3	-0.3	-0.3	-0.3	-0.3	-0.3	-0.2	-0.2	-0.2	-0.2	-0.3	-0.3	-0.3	-0.2	-0.3															
Comb. e Lub. / Fuels and Lubricants	-0.6	-0.6	-0.7	-0.5	-0.6	-0.5	-0.8	-0.6	-0.7	-0.6	-0.8	-0.4	-0.5	-0.6	-0.8	-0.7	-0.6	-0.5	-0.5	-0.5	-0.5	-0.4	-0.5	-0.5															
Mat. de Transporte / Transport equipment and accessories	0.1	0.1	0.1	0.1	0.1	0.0	0.2	0.2	0.2	0.2	0.2	0.2	0.2	-0.1	0.2	0.1	0.2	0.0	0.2	0.1	0.2	0.1	0.2	0.1															
Forn. Industriais / Industrial Supplies	-0.2	-0.1	0.0	0.0	0.0	-0.1	-0.1	0.0	0.0	0.0	0.0	0.0	0.0	0.1	0.0	0.0	0.0	-0.1	0.0	-0.1	0.0	0.0	0.0	0.0															
Máq. e Out. Bens de Capital / Capital Goods and Accessories	-0.3	-0.3	-0.2	-0.2	-0.2	-0.3	-0.2	-0.2	-0.1	-0.1	-0.2	-0.2	-0.1	-0.1	-0.1	-0.2	-0.2	-0.1	-0.1	-0.1	-0.1	-0.1	-0.1	-0.1															
Bens de Consumo / Consumer Goods	0.1	-0.1	-0.2	-0.1	0.0	-0.1	0.0	0.0	0.0	0.0	0.0	0.1	0.1	0.0	0.0	0.0	0.1	0.0	0.1	0.0	0.0	0.0	0.1	0.1															
Bens N.E. noutra categoria / Goods not elsewhere spec.	0.0	0.0	0.0	0.0	0.0	0.0	0.0	0.0	0.0	0.0	0.0	0.0	0.0	0.0	0.0	0.0	0.0	0.0	0.0	0.0	0.0	0.0	0.0	0.0															
Total	-1.2	-1.4	-1.4	-1.0	-1.0	-1.2	-1.1	-0.9	-1.0	-0.9	-1.0	-0.6	-0.6	-1.1	-1.1	-1.0	-0.7	-1.0	-0.6	-0.7	-0.6	-0.7	-0.6	-0.7															

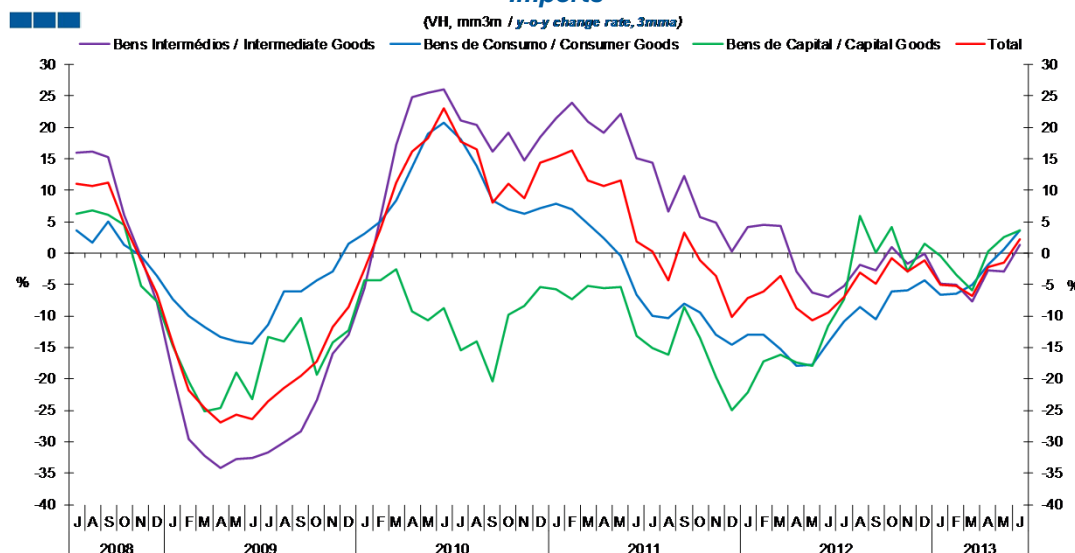
6. Classes Básicas de Bens do Sistema Europeu de Contas Nacionais / Basic Classes of Goods in the European System of Accounts

Gráfico / Graph 6.1.
Exportações
Exports



	2011					2012					2013													
	J	A	S	O	N	D	J	F	M	A	M	J	J	A	S	O	N	D	J	F	M	A	M	J
Bens Intermediários / Intermediate Goods	17.0	15.6	16.7	19.3	19.2	16.7	13.3	9.9	8.2	4.7	3.8	5.4	8.8	11.9	6.8	5.4	-0.3	1.3	1.6	1.3	0.3	4.0	6.3	7.4
Bens de Consumo / Consumer Goods	17.7	16.2	14.7	13.2	12.2	7.7	6.5	3.4	6.6	3.8	3.9	2.7	2.8	2.3	-1.5	1.1	1.8	3.8	3.0	0.9	-1.5	1.2	2.7	5.0
Bens de Capital / Capital Goods	13.5	10.1	10.4	18.0	24.6	21.2	32.3	48.4	65.1	52.2	35.0	27.8	23.6	28.8	14.9	9.5	-0.1	0.2	2.1	-1.5	0.8	-0.4	7.6	3.9
Total	16.9	15.3	15.3	16.9	17.2	13.9	12.7	10.9	12.0	8.3	6.6	6.7	8.1	10.1	4.6	4.3	0.4	2.0	2.1	0.8	-0.2	2.6	5.3	6.3

Gráfico / Graph 6.2.
Importações
Imports



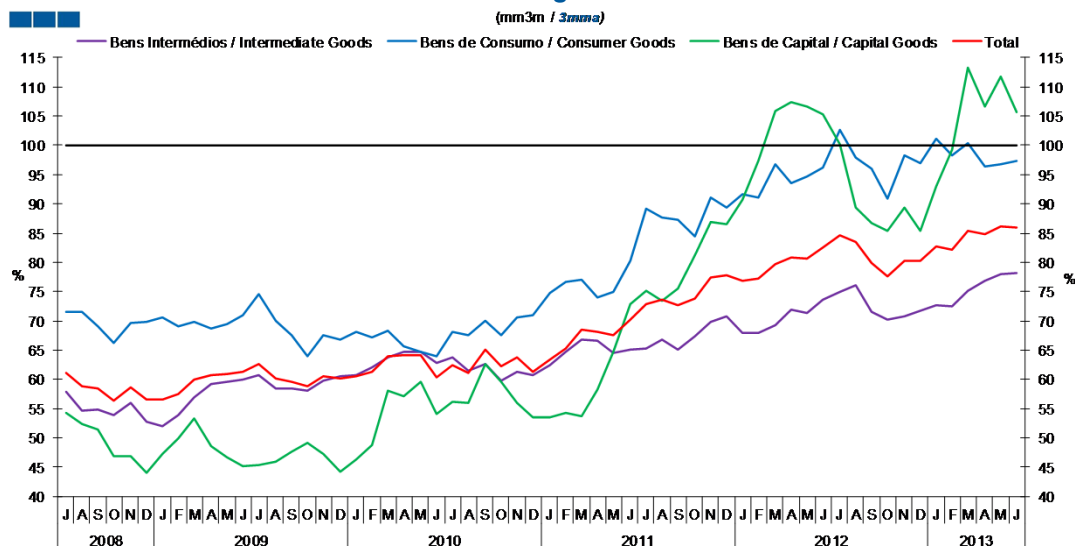
	2011					2012					2013													
	J	A	S	O	N	D	J	F	M	A	M	J	J	A	S	O	N	D	J	F	M	A	M	J
Bens Intermediários / Intermediate Goods	14.3	6.6	12.2	5.8	4.8	0.2	4.1	4.5	4.3	-2.9	-6.2	-7.0	-5.2	-1.8	-2.8	1.0	-1.7	-0.1	-4.9	-5.0	-7.6	-2.7	-2.8	1.4
Bens de Consumo / Consumer Goods	-10.0	-10.2	-8.1	-9.4	-13.0	-14.6	-13.1	-13.0	-15.3	-18.0	-17.8	-14.2	-10.8	-8.6	-10.6	-6.0	-5.8	-4.3	-6.6	-6.4	-5.1	-1.8	0.6	3.6
Bens de Capital / Capital Goods	-15.1	-16.2	-8.5	-13.5	-19.7	-25.0	-22.2	-17.2	-16.2	-17.3	-17.9	-11.6	-7.4	5.9	0.1	4.2	-2.9	1.5	-0.4	-3.4	-5.8	0.3	2.6	3.5
Total	0.2	-4.3	3.3	-1.2	-3.6	-10.2	-7.1	-6.1	-3.7	-8.8	-10.6	-9.4	-7.0	-3.1	-4.8	-0.8	-3.0	-1.2	-5.0	-5.3	-6.8	-2.2	-1.5	2.1

Nota: Não inclui a série Outros Bens devido ao seu baixo valor relativo e elevada variabilidade.

Note: Does not include Other Goods because of its small relative value and high variability.

6. Classes Básicas de Bens do Sistema Europeu de Contas Nacionais / Basic Classes of Goods in the European System of Accounts

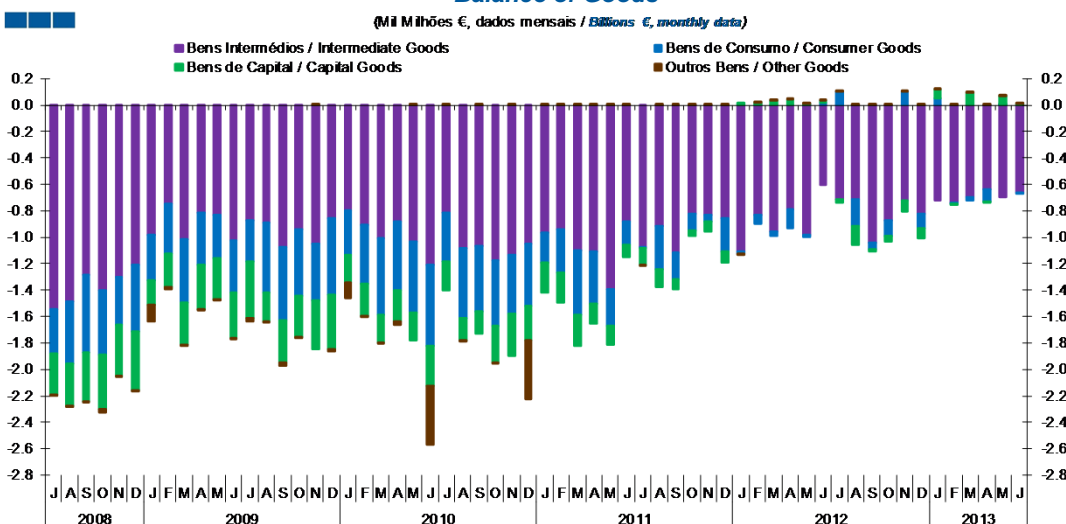
Gráfico / Graph 6.3.
Taxa de Cobertura
Coverage Rate



	2011					2012					2013													
	J	A	S	O	N	D	J	F	M	A	M	J	J	A	S	O	N	D	J	F	M	A	M	J
Bens Intermediários / Intermediate Goods	65.2	66.7	65.2	67.3	69.7	70.7	68.0	68.0	69.3	71.9	71.3	73.7	74.9	76.1	71.6	70.2	70.7	71.7	72.6	72.4	75.2	76.8	78.0	78.1
Bens de Consumo / Consumer Goods	89.1	87.6	87.3	84.4	91.0	89.4	91.7	91.1	96.8	93.6	94.8	96.2	102.7	97.9	96.1	90.8	98.4	97.0	101.2	98.3	100.4	96.4	96.7	97.4
Bens de Capital / Capital Goods	75.1	73.5	75.5	81.3	87.0	86.4	90.8	97.3	105.8	107.3	106.6	105.4	100.2	89.3	86.7	85.4	89.4	85.3	93.1	99.1	113.3	106.6	111.7	105.7
Total	72.8	73.5	72.6	73.7	77.5	77.8	76.9	77.2	79.7	80.8	80.5	82.6	84.7	83.5	79.8	77.5	80.2	80.3	82.6	82.1	85.4	84.8	86.1	85.9

Nota: Não inclui a série Outros Bens devido ao seu baixo valor relativo e elevada variabilidade.
Note: Does not include Other Goods because of its small relative value and high variability.

Gráfico / Graph 6.4.
Saldo de Bens
Balance of Goods



	2011					2012					2013													
	J	A	S	O	N	D	J	F	M	A	M	J	J	A	S	O	N	D	J	F	M	A	M	J
Bens Intermediários / Intermediate Goods	-1.1	-0.9	-1.1	-0.8	-0.8	-0.9	-1.1	-0.8	-1.0	-0.8	-1.0	-0.6	-0.7	-1.0	-0.9	-0.7	-0.8	-0.7	-0.7	-0.7	-0.7	-0.6	-0.7	-0.7
Bens de Consumo / Consumer Goods	0.0	-0.3	-0.2	-0.1	-0.1	-0.3	0.0	-0.1	0.0	-0.1	0.0	0.0	0.1	-0.2	-0.1	-0.1	0.1	-0.1	0.1	0.0	0.0	-0.1	0.0	0.0
Bens de Capital / Capital Goods	-0.1	-0.1	-0.1	0.0	-0.1	-0.1	0.0	0.0	0.0	0.0	0.0	0.0	0.0	-0.1	0.0	0.0	-0.1	-0.1	0.1	0.0	0.1	0.0	0.1	0.0
Outros Bens / Other Goods	0.0	0.0	0.0	0.0	0.0	0.0	0.0	0.0	0.0	0.0	0.0	0.0	0.0	0.0	0.0	0.0	0.0	0.0	0.0	0.0	0.0	0.0	0.0	0.0
Total	-1.2	-1.4	-1.4	-1.0	-1.0	-1.2	-1.1	-0.9	-1.0	-0.9	-1.0	-0.6	-0.6	-1.1	-1.1	-1.0	-0.7	-1.0	-0.6	-0.7	-0.6	-0.7	-0.6	-0.7

6. Classes Básicas de Bens do Sistema Europeu de Contas Nacionais / Basic Classes of Goods in the European System of Accounts

Tabela / Table 1.1.
 Estrutura do Saldo
 Balance Structure

Milhões de euros \ Millions of euros

		2012						2013																	
		J		A		S		O		N		D		J		F		M		A		M		J	
		M€	%	M€	%	M€	%	M€	%	M€	%	M€	%	M€	%	M€	%	M€	%	M€	%	M€	%	M€	%
Bens Intermedios / Intermediate Goods	Prod. alim. e bebidas / <i>Foods and beverages</i>	-151	24	-172	16	-170	15	-169	16	-137	19	-122	12	-131	22	-147	20	-163	26	-144	20	-104	17	-145	22
	Forn. industriais NE noutra categoria / <i>Industrial supplies NE specified</i>	8	-1	85	-8	-12	1	4	0	-43	6	-68	7	7	-1	-87	12	9	-1	36	-5	12	-2	-22	3
	Comb. e lubrificantes / <i>Fuel and lubricants</i>	-577	91	-680	65	-864	78	-717	70	-538	76	-624	62	-597	100	-543	73	-581	92	-533	73	-602	96	-508	78
	Máquinas, outros bens de capital (Partes e acessórios) / <i>Capital goods and parts and accessories</i>	-54	9	-43	4	-57	5	-46	4	-53	7	-53	5	-55	9	-48	6	-32	5	-63	9	-59	9	-29	4
	Material de transportes (Partes e acessórios) / <i>Transport equipment (Parts and accessories)</i>	60	-10	100	-10	64	-6	51	-5	48	-7	45	-4	53	-9	87	-12	73	-12	69	-9	56	-9	39	-6
Total		-714	113	-711	68	-1,039	94	-876	85	-723	102	-822	82	-724	121	-738	99	-693	109	-634	87	-698	111	-665	101
Bens de Consumo / Consumption Goods	Prod. alim. e bebidas destinados ao consumo dos particulares / <i>Food and beverages mainly for household consumption</i>	-105	17	-149	14	-93	8	-51	5	-50	7	-80	8	-74	12	-113	15	-113	18	-142	19	-145	23	-133	20
	Material de transporte / <i>Transport equipment</i>	64	-10	-50	5	89	-8	-16	2	67	-9	-59	6	48	-8	30	-4	35	-6	21	-3	58	-9	26	-4
	Bens de consumo NE noutra categoria / <i>Consumption goods NE specified</i>	146	-23	-3	0	-48	4	-45	4	82	-12	32	-3	78	-13	77	-10	47	-7	24	-3	90	-14	102	-16
Total		105	-17	-202	19	-52	5	-112	11	99	-14	-108	11	52	-9	-6	1	-31	5	-97	13	3	0	-6	1
Bens de Capital / Capital Goods	Carburantes para motor / <i>Motor spirit</i>	40	-6	59	-6	29	-3	22	-2	-32	5	40	-4	89	-15	55	-7	100	-16	87	-12	68	-11	36	-5
	Máquinas, outros bens de capital (exceto material de transporte) / <i>Capital goods (except transport equipment)</i>	-95	15	-63	6	-85	8	-104	10	-98	14	-154	15	-81	14	-63	8	-59	9	-62	8	-49	8	-66	10
	Material de transportes destinado à indústria / <i>Transport equipment, industrial</i>	30	-5	-137	13	43	-4	39	-4	45	-6	35	-3	62	-10	5	-1	49	-8	-30	4	46	-7	44	-7
Total		-25	4	-141	13	-14	1	-43	4	-85	12	-78	8	70	-12	-3	0	90	-14	-4	1	65	-10	14	-2
Outros / Others		1	0	1	0	2	0	2	0	3	0	1	0	1	0	2	0	1	0	3	0	2	0	1	0
Total		-632	100	-1,052	100	-1,103	100	-1,029	100	-706	100	-1,008	100	-600	100	-745	100	-634	100	-732	100	-628	100	-656	100

7. Índice GEE de Comércio Internacional de Bens / *GEE Index of International Trade of Goods*

Gráfico / *Graph 7.1.*
 Total

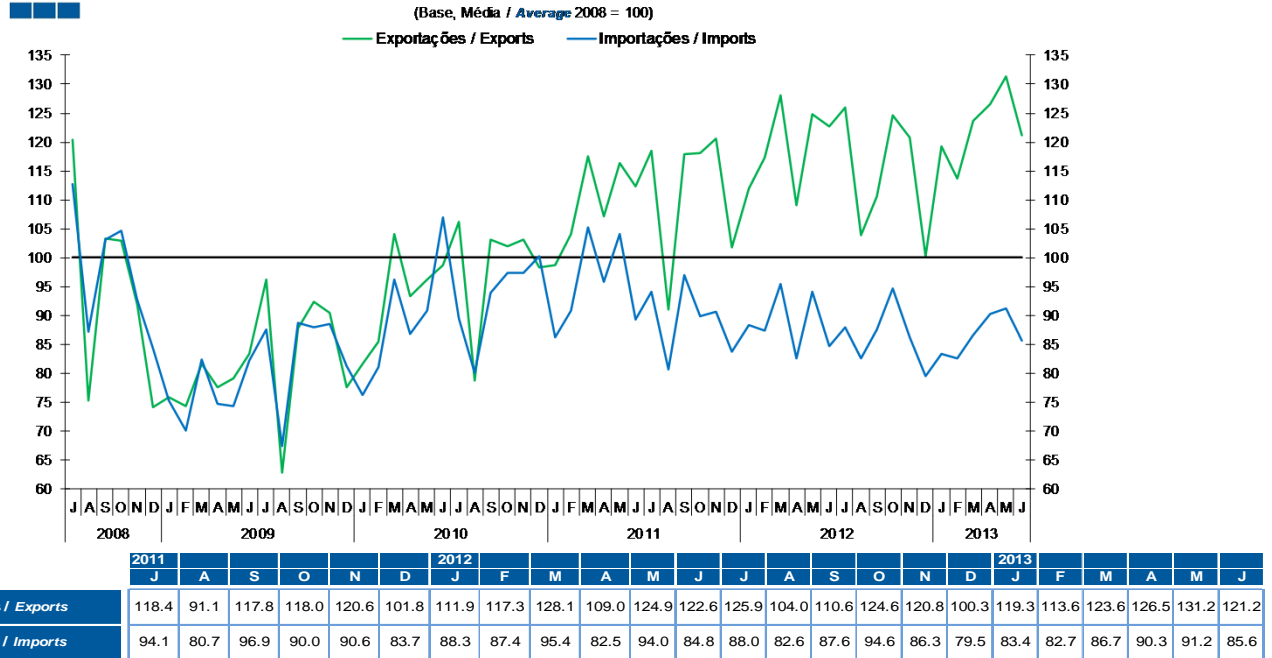
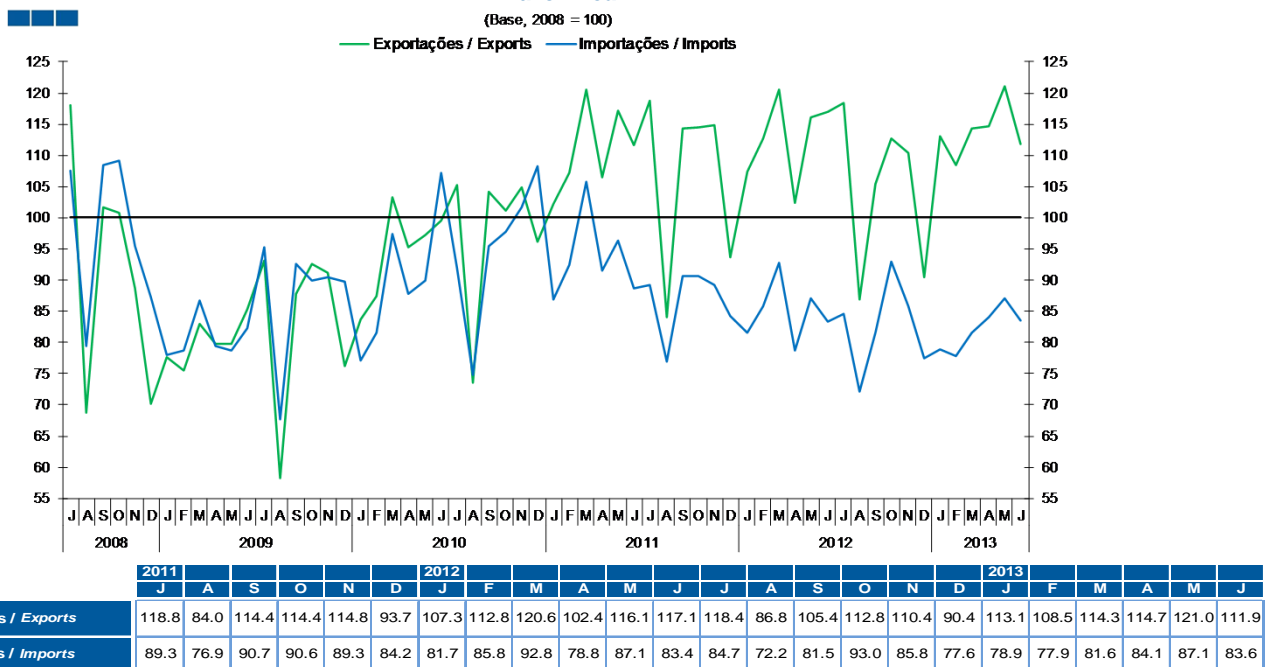


Gráfico / *Graph 7.2.*
 Zona Euro
 Euro Area



7. Índice GEE de Comércio Internacional de Bens / *GEE Index of International Trade of Goods*

Gráfico / Graph 7.3.
Intracomunitário
Intra-Community

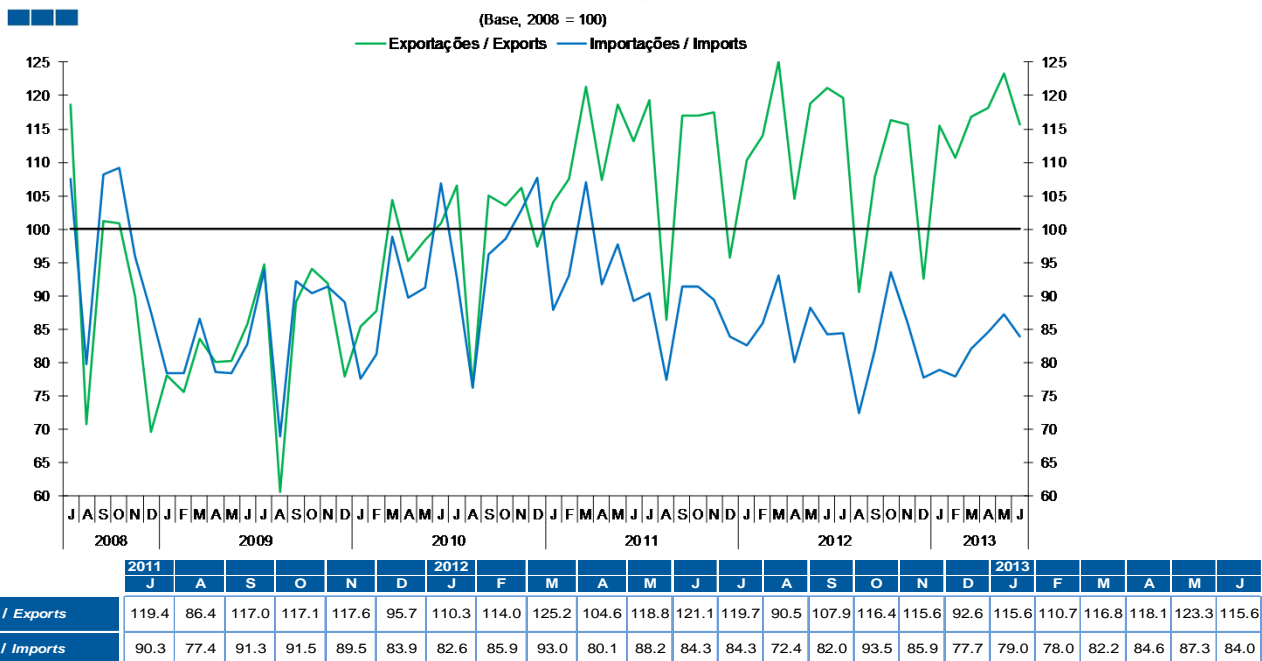


Gráfico / Graph 7.4.
Extracomunitário
Extra-Community

