

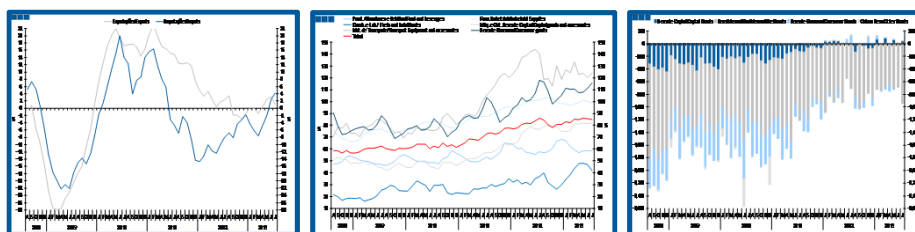
Estatísticas Temáticas de Conjuntura

Short-term Thematic Statistics

- Nº 9/2013 -

9 de Setembro de 2013

September, 09, 2013



Comércio Internacional de Bens

International Trade of Goods

- Julho de 2013 -

- July, 2013 -

Fonte: Instituto Nacional de Estatística

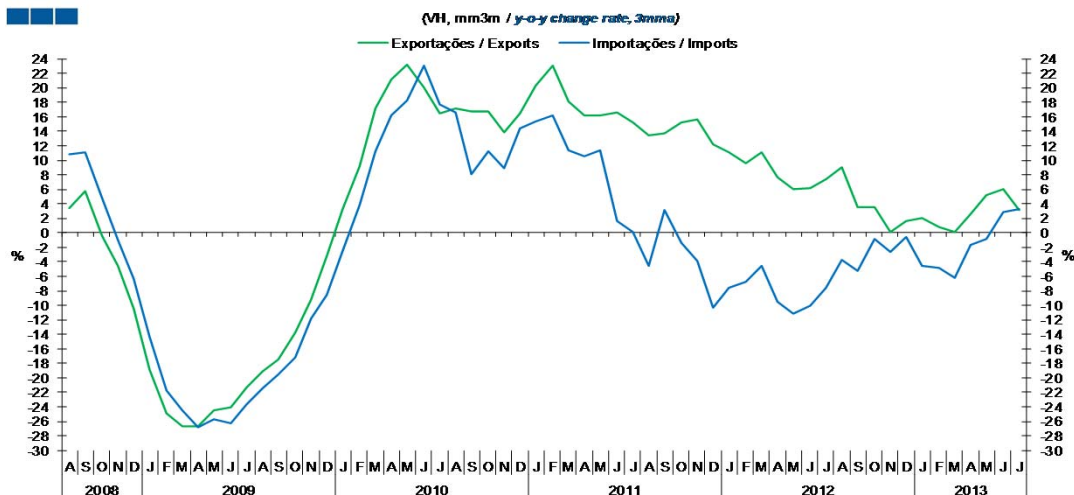
Source: Statistics Portugal

Índice / *Index*

	Página / <i>Page</i>
1. Total	
Importações e Exportações / <i>Imports and Exports</i>	3
Taxa de Cobertura / <i>Coverage Rate</i>	3
Saldo / <i>Balance</i>	4
2. Zona Euro-17 / <i>Euro Area-17</i>	
Importações e Exportações / <i>Imports and Exports</i>	5
Taxa de Cobertura / <i>Coverage Rate</i>	5
Saldo / <i>Balance</i>	6
3. Intracomunitário / <i>Intra-Community</i>	
Importações e Exportações / <i>Imports and Exports</i>	7
Taxa de Cobertura / <i>Coverage Rate</i>	7
Saldo / <i>Balance</i>	8
4. Extracomunitário / <i>Extra-Community</i>	
Importações e Exportações / <i>Imports and Exports</i>	9
Taxa de Cobertura / <i>Coverage Rate</i>	9
Saldo / <i>Balance</i>	10
5. Grandes Categorias Económicas / <i>Broad Economic Categories</i>	
Exportações / <i>Exports</i>	11
Importações / <i>Imports</i>	11
Taxa de Cobertura / <i>Coverage Rate</i>	12
Saldo / <i>Balance</i>	12
6. Classes Básicas de Bens do Sistema Europeu de Contas Nacionais / <i>Basic Classes of Goods in the European System of Accounts</i>	
Exportações / <i>Exports</i>	13
Importações / <i>Imports</i>	13
Taxa de Cobertura / <i>Coverage Rate</i>	14
Saldo / <i>Balance</i>	14
Estrutura do Saldo / <i>Balance Structure</i>	15
7. Índice GEE de Comércio Internacional de Bens / <i>GEE Index of International Trade of Goods</i>	
Total / <i>Total</i>	16
Zona Euro / <i>Euro Area</i>	16
Intracomunitário / <i>Intra-Community</i>	17
Extracomunitário / <i>Extra-Community</i>	17

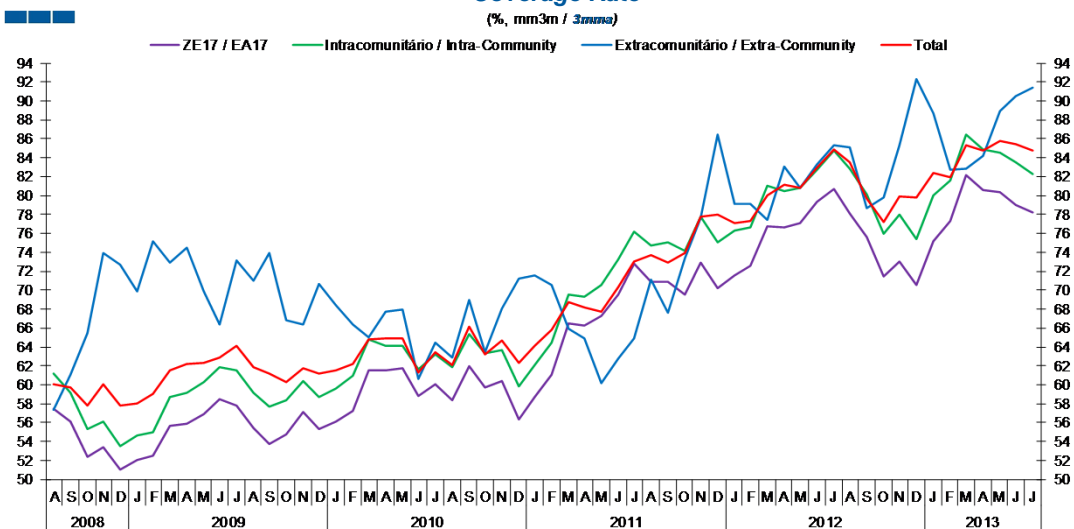
1. Total

Gráfico / Graph 1.1.
 Importações e Exportações
 Imports and Exports



	2011					2012												2013						
	A	S	O	N	D	J	F	M	A	M	J	J	A	S	O	N	D	J	F	M	A	M	J	J
Exportações / Exports	13.5	13.6	15.2	15.7	12.2	11.1	9.6	11.2	7.7	6.0	6.1	7.4	9.1	3.6	3.5	0.1	1.7	2.0	0.9	0.1	2.6	5.2	6.1	3.2
Importações / Imports	-4.5	3.1	-1.4	-3.8	-10.4	-7.6	-6.8	-4.5	-9.5	-11.2	-10.0	-7.6	-3.7	-5.2	-0.8	-2.7	-0.6	-4.5	-4.8	-6.2	-1.7	-0.9	2.9	3.3

Gráfico / Graph 1.2.
 Taxa de Cobertura
 Coverage Rate

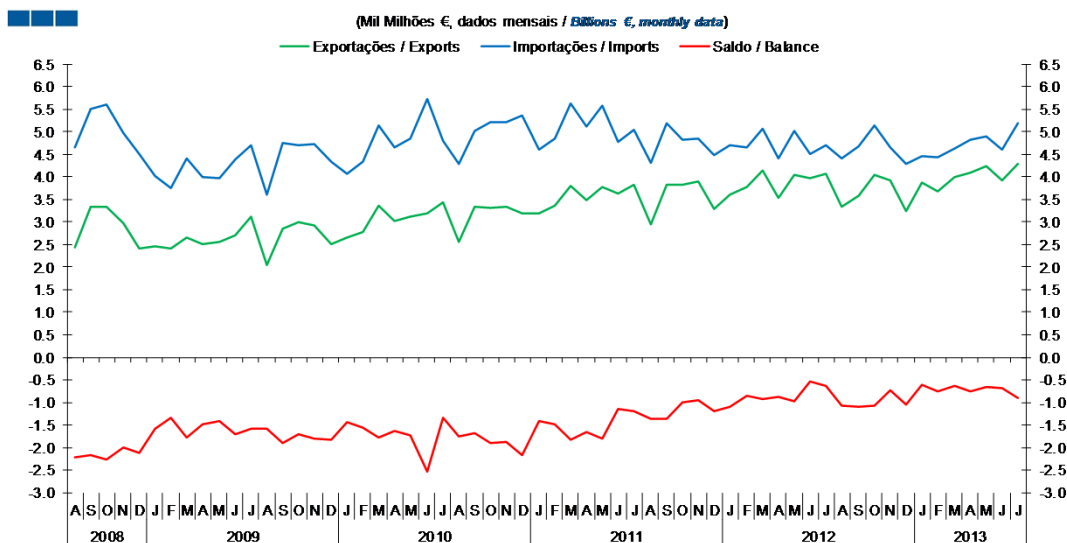


Fonte / Source: INE

	2011					2012												2013						
	A	S	O	N	D	J	F	M	A	M	J	J	A	S	O	N	D	J	F	M	A	M	J	J
ZE 17 / EA 17	70.8	70.9	69.6	72.9	70.2	71.6	72.5	76.7	76.6	77.1	79.3	80.7	78.1	75.6	71.5	73.1	70.6	75.1	77.4	82.1	80.6	80.3	79.0	78.2
Intracomunitário / Intra-community	74.7	75.0	74.2	77.7	75.1	76.3	76.7	81.0	80.5	80.8	82.8	84.7	82.9	80.1	76.0	78.0	75.4	80.0	81.6	86.4	84.9	84.5	83.5	82.3
Extracomunitário / Extra-community	71.1	67.6	73.3	77.7	86.5	79.1	79.1	77.4	83.0	80.8	83.3	85.3	85.1	78.7	79.8	85.3	92.3	88.7	82.8	82.9	84.2	88.9	90.6	91.4
Total	73.7	72.9	73.9	77.7	78.0	77.1	77.3	80.0	81.1	80.8	82.9	84.9	83.5	79.7	77.1	79.9	79.8	82.3	81.9	85.4	84.7	85.8	85.5	84.8

1. Total

Gráfico / Graph 1.3.
Saldo
Balance



	2011			2012					2013															
	A	S	O	N	D	J	F	M	A	M	J	J	A	S	O	N	D	J	F	M	A	M	J	J
Exportações / Exports	2.9	3.8	3.8	3.9	3.3	3.6	3.8	4.1	3.5	4.0	4.0	4.1	3.3	3.6	4.0	3.9	3.2	3.9	3.7	4.0	4.1	4.2	3.9	4.3
Importações / Imports	4.3	5.2	4.8	4.8	4.5	4.7	4.6	5.1	4.4	5.0	4.5	4.7	4.4	4.7	5.1	4.6	4.3	4.5	4.4	4.6	4.8	4.9	4.6	5.2
Saldo / Balance	-1.4	-1.4	-1.0	-0.9	-1.2	-1.1	-0.9	-0.9	-0.9	-1.0	-0.5	-0.6	-1.1	-1.1	-1.1	-0.7	-1.0	-0.6	-0.7	-0.6	-0.7	-0.7	-0.7	-0.9

2. Zona Euro-17 / Euro Area-17

Gráfico / Graph 2.1.
Importações e Exportações
Imports and Exports

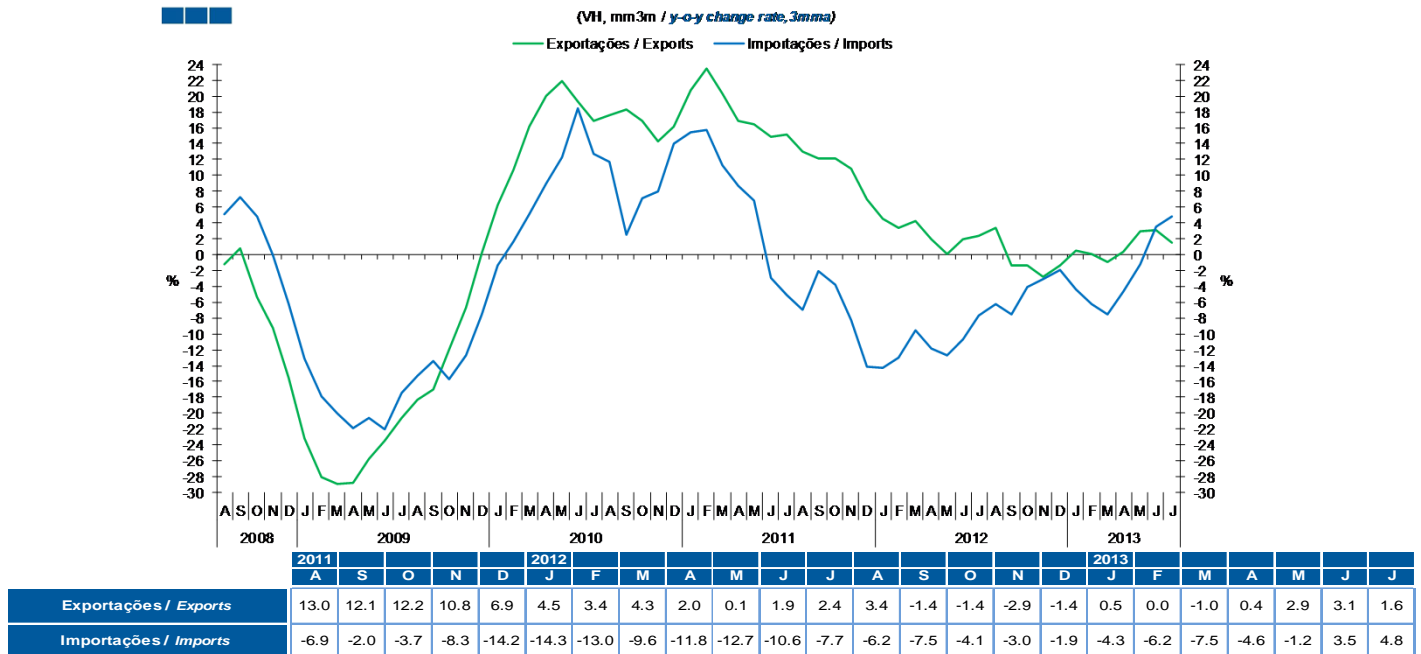
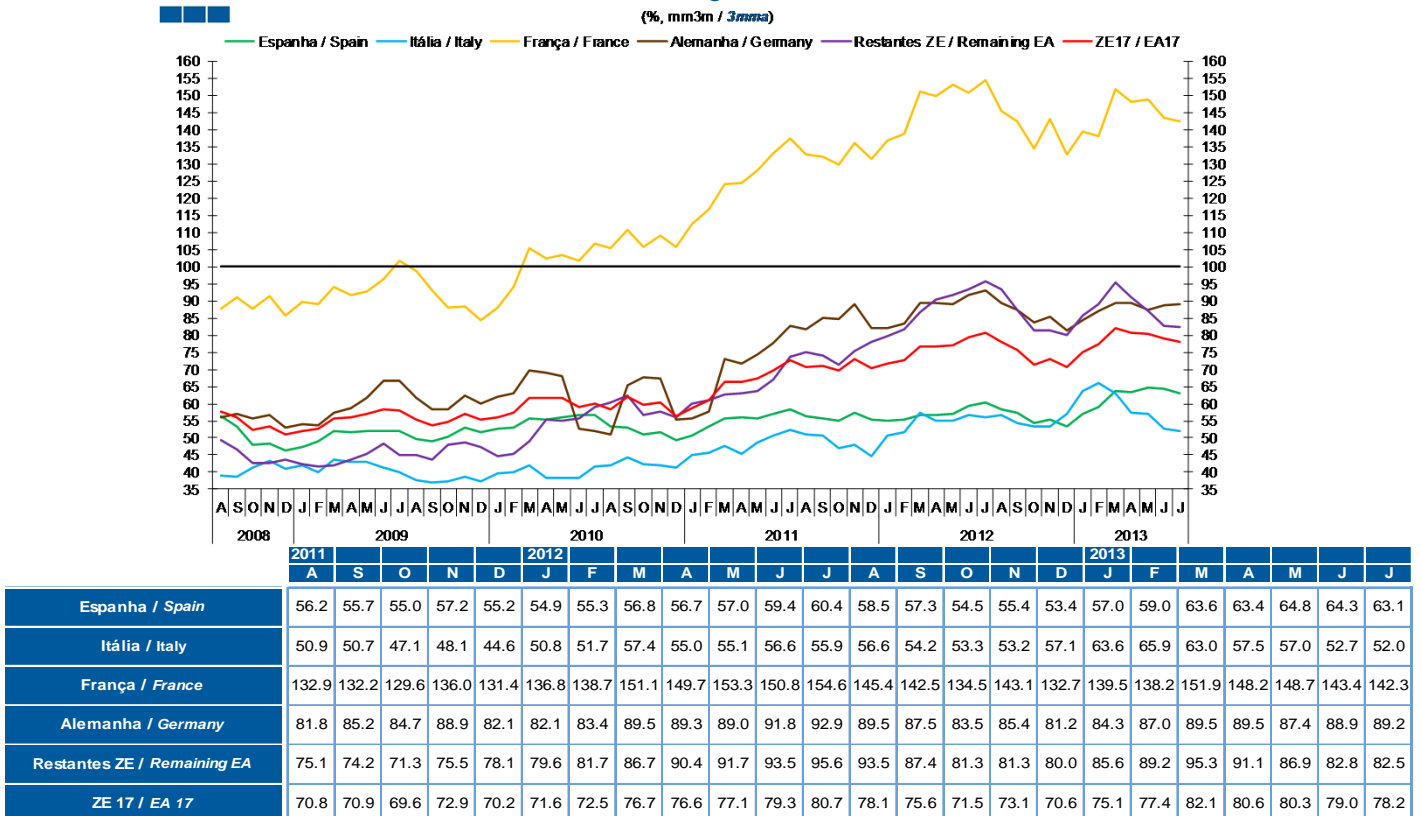
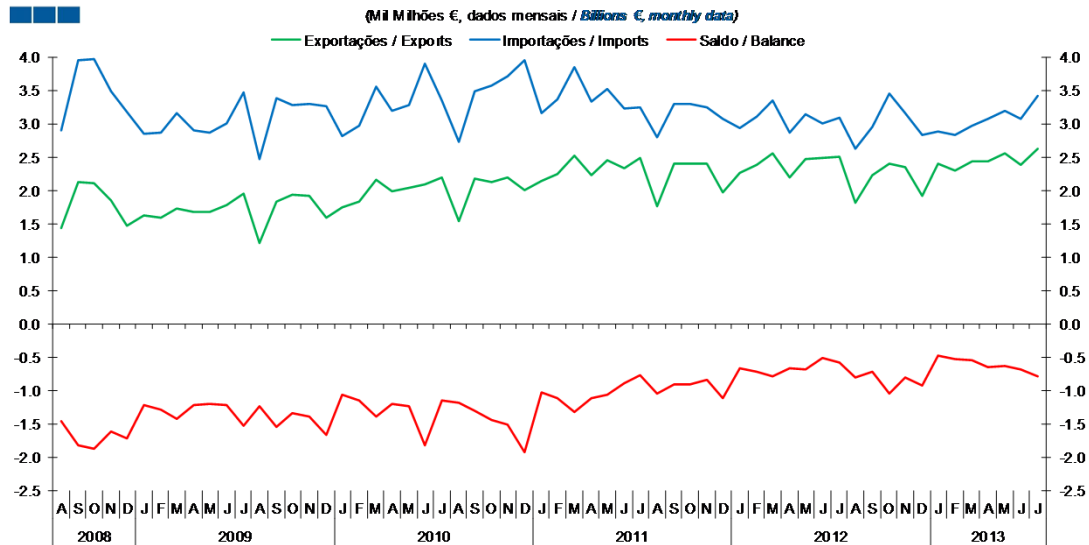


Gráfico / Graph 2.2.
Taxa de Cobertura
Coverage Rate



2. Zona Euro-17 / Euro Area-17

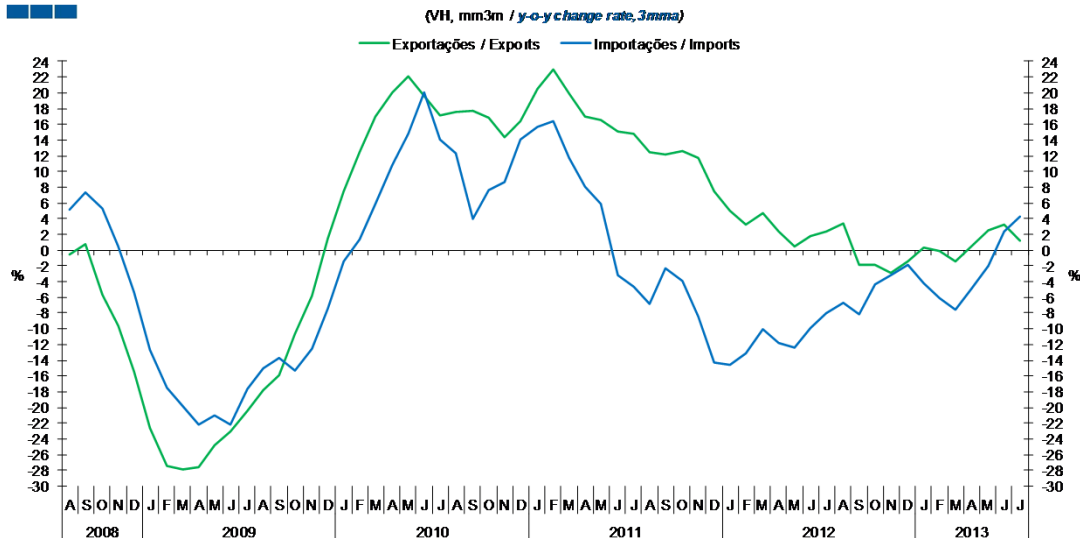
Gráfico / Graph 2.3.
Saldo
Balance



	2011			2012			2013																	
	A	S	O	N	D	J	F	M	A	M	J	J	A	S	O	N	D	J	F	M	A	M	J	J
Exportações / Exports	1.8	2.4	2.4	2.4	2.0	2.3	2.4	2.6	2.2	2.5	2.5	2.5	1.8	2.2	2.4	2.3	1.9	2.4	2.3	2.4	2.4	2.6	2.4	2.6
Importações / Imports	2.8	3.3	3.3	3.3	3.1	2.9	3.1	3.3	2.9	3.1	3.0	3.1	2.6	3.0	3.4	3.2	2.8	2.9	2.8	3.0	3.1	3.2	3.1	3.4
Saldo / Balance	-1.0	-0.9	-0.9	-0.8	-1.1	-0.7	-0.7	-0.8	-0.7	-0.7	-0.5	-0.6	-0.8	-0.7	-1.0	-0.8	-0.9	-0.5	-0.5	-0.5	-0.6	-0.6	-0.7	-0.8

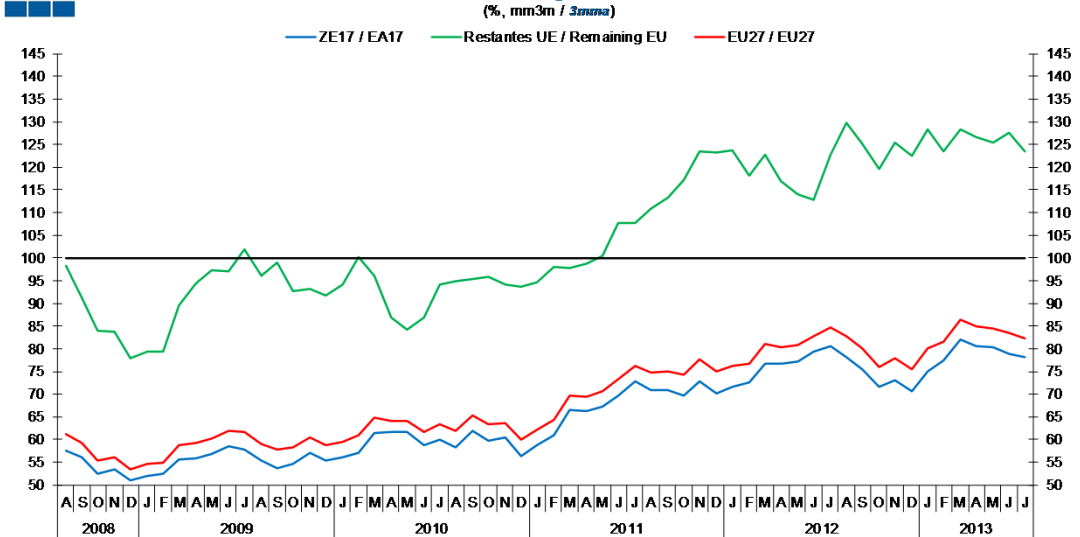
3. Intracomunitário / Intra-Community

Gráfico / Graph 3.1.
 Importações e Exportações
 Imports and Exports



	2011			2012					2013															
	A	S	O	N	D	J	F	M	A	M	J	J	A	S	O	N	D	J	F	M	A	M	J	J
Exportações / Exports	12.5	12.2	12.6	11.7	7.5	5.0	3.3	4.7	2.3	0.5	1.8	2.3	3.4	-1.9	-1.9	-2.9	-1.4	0.3	-0.1	-1.5	0.4	2.5	3.2	1.2
Importações / Imports	-6.9	-2.3	-4.0	-8.5	-14.3	-14.6	-13.2	-10.1	-11.8	-12.4	-9.9	-8.0	-6.7	-8.1	-4.3	-3.2	-1.8	-4.3	-6.1	-7.6	-4.9	-2.0	2.4	4.2

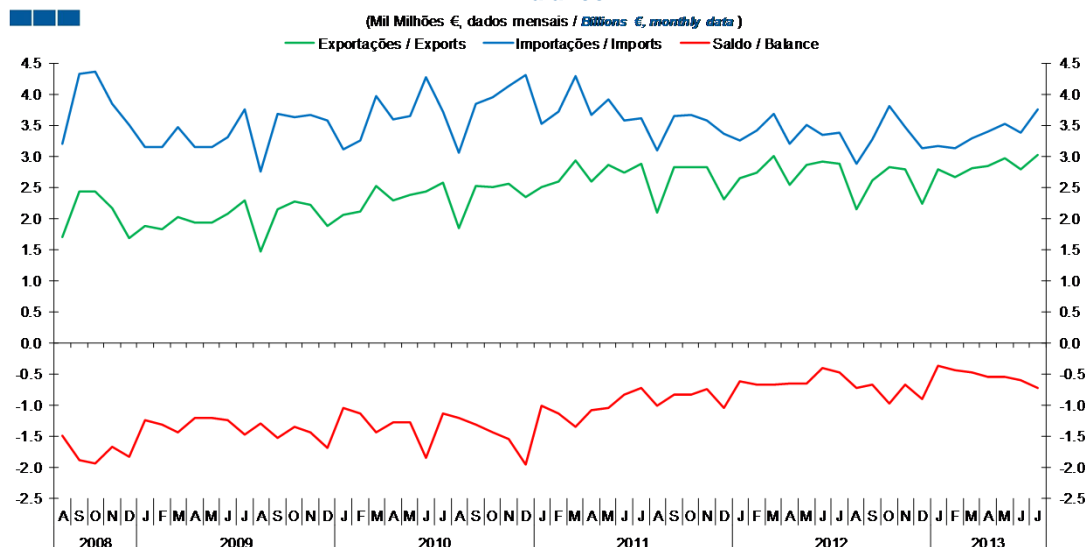
Gráfico / Graph 3.2.
 Taxa de Cobertura
 Coverage Rate



	2011			2012					2013															
	A	S	O	N	D	J	F	M	A	M	J	J	A	S	O	N	D	J	F	M	A	M	J	J
ZE 17 / EA 17	70.8	70.9	69.6	72.9	70.2	71.6	72.5	76.7	76.6	77.1	79.3	80.7	78.1	75.6	71.5	73.1	70.6	75.1	77.4	82.1	80.6	80.3	79	78.2
UE 27 / EU 27	74.7	75	74.2	77.7	75.1	76.3	76.7	81	80.5	80.8	82.8	84.7	82.9	80.1	76	78	75.4	80	81.6	86.4	84.9	84.5	83.5	82.3
Restantes UE / Remaining EU	111.0	113.2	117.1	123.5	123.3	123.7	118.2	122.7	116.9	113.9	112.8	122.8	129.8	125.3	119.5	125.3	122.4	128.3	123.5	128.3	126.6	125.5	127.6	123.6

3. Intracomunitário / Intra-Community

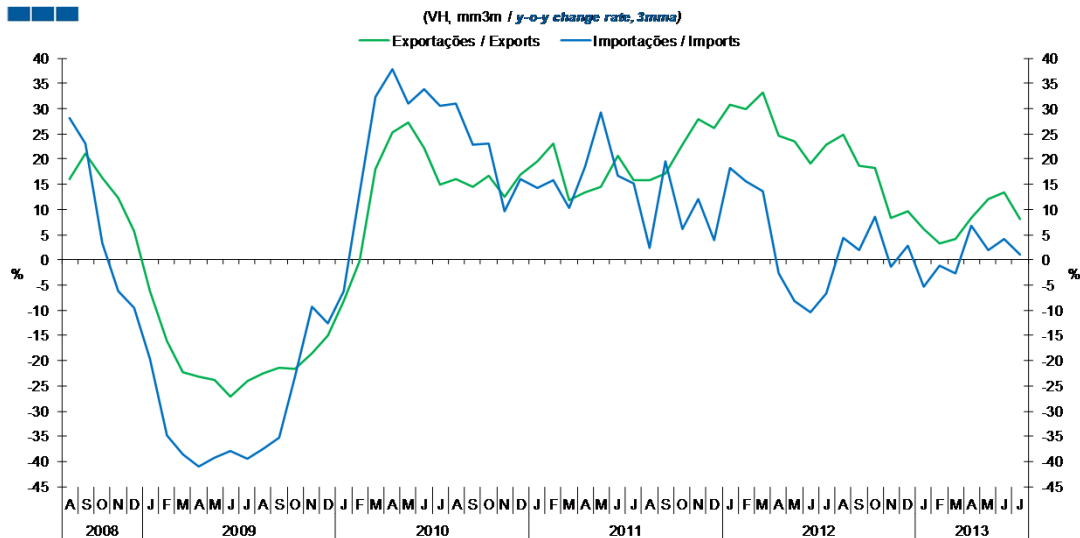
Gráfico / Graph 3.3.
 Saldo
 Balance



	2011			2012					2013															
	A	S	O	N	D	J	F	M	A	M	J	J	A	S	O	N	D	J	F	M	A	M	J	J
Exportações / Exports	2.1	2.8	2.8	2.8	2.3	2.6	2.7	3.0	2.5	2.9	2.9	2.9	2.1	2.6	2.8	2.8	2.2	2.8	2.7	2.8	2.8	3.0	2.8	3.0
Importações / Imports	3.1	3.7	3.7	3.6	3.4	3.3	3.4	3.7	3.2	3.5	3.3	3.4	2.9	3.3	3.8	3.5	3.1	3.2	3.1	3.3	3.4	3.5	3.4	3.7
Saldo / Balance	-1.0	-0.8	-0.8	-0.7	-1.0	-0.6	-0.7	-0.7	-0.7	-0.7	-0.4	-0.5	-0.7	-0.7	-1.0	-0.7	-0.9	-0.4	-0.5	-0.5	-0.6	-0.5	-0.6	-0.7

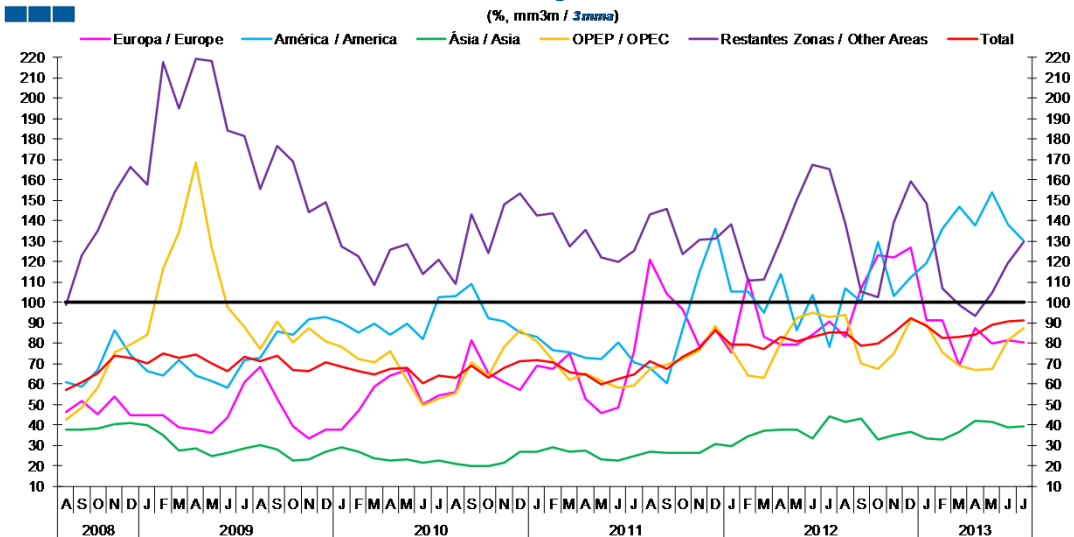
4. Extracomunitário / Extra-Community

Gráfico / Graph 4.1.
 Importações e Exportações
 Imports and Exports



	2011					2012					2013													
	A	S	O	N	D	J	F	M	A	M	J	J	A	S	O	N	D	J	F	M	A	M	J	J
Exportações / Exports	15.8	17.2	22.8	27.9	26.2	30.8	29.8	33.2	24.7	23.5	19.1	22.8	24.9	18.7	18.2	8.3	9.7	6.2	3.3	4.2	8.3	12.1	13.3	8.2
Importações / Imports	2.5	19.6	6.2	12.0	4.0	18.3	15.6	13.6	-2.6	-8.1	-10.3	-6.7	4.4	2.0	8.6	-1.3	2.8	-5.3	-1.2	-2.7	6.8	1.9	4.2	1.1

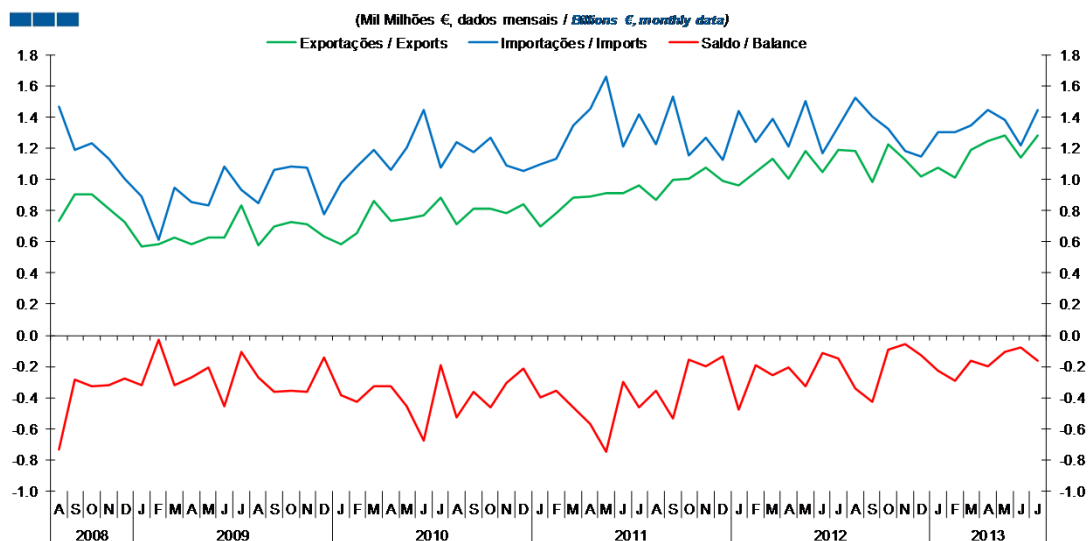
Gráfico / Graph 4.2.
 Taxa de Cobertura
 Coverage Rate



	2011					2012					2013													
	A	S	O	N	D	J	F	M	A	M	J	J	A	S	O	N	D	J	F	M	A	M	J	J
Europa / Europe	120.7	104.3	96.6	78.4	86.6	75.8	112.0	83.1	79.3	79.5	84.2	90.7	83.1	106.8	123.1	122.0	126.6	91.4	91.1	69.2	87.5	79.7	81.4	80.5
América / America	67.9	60.7	87.1	114.7	136.2	105.0	105.5	95.2	114.0	86.3	103.5	78.3	106.9	100.6	129.4	103.0	112.0	119.5	135.9	146.6	137.8	153.9	138.0	129.9
Ásia / Asia	26.7	26.6	26.5	26.2	30.5	29.7	34.4	37.4	38.0	38.0	33.5	44.0	41.5	43.4	33.1	35.2	36.5	33.4	33.1	36.9	42.0	41.3	38.8	39.5
OPEP / OPEC	67.6	69.7	72.3	76.9	88.6	77.2	64.1	63.1	80.3	92.3	94.9	92.9	94.1	70.1	67.7	74.7	91.9	89.1	75.3	69.0	67.0	67.6	81.5	87.2
Restantes Zonas / Other Areas	143.0	145.7	123.8	130.6	131.2	138.0	110.6	111.2	130.8	150.1	167.4	165.2	138.9	105.4	102.4	139.4	159.1	148.7	106.9	98.7	93.3	104.9	119.4	129.6
Total	71.1	67.6	73.3	77.7	86.5	79.1	79.1	77.4	83.0	80.8	83.3	85.3	85.1	78.7	79.8	85.3	92.3	88.7	82.8	82.9	84.2	88.9	90.6	91.4

4. Extracomunitário / Extra-Community

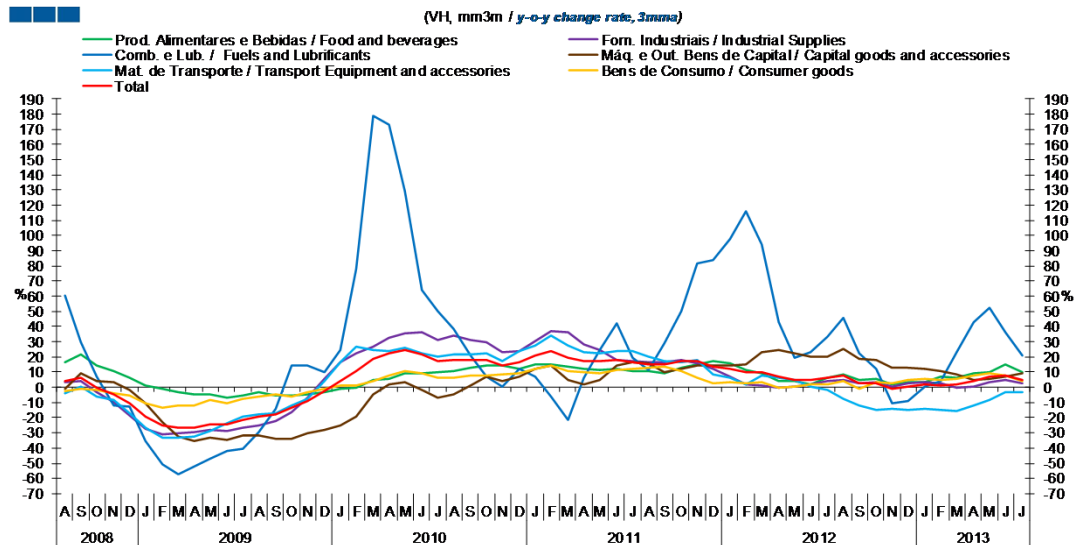
Gráfico / Graph 4.3.
 Saldo
 Balance



	2011				2012												2013							
	A	S	O	N	D	J	F	M	A	M	J	J	A	S	O	N	D	J	F	M	A	M	J	J
Exportações / Exports	0.9	1.0	1.0	1.1	1.0	1.0	1.0	1.1	1.0	1.2	1.0	1.2	1.2	1.0	1.2	1.1	1.0	1.1	1.0	1.2	1.2	1.3	1.1	1.3
Importações / Imports	1.2	1.5	1.2	1.3	1.1	1.4	1.2	1.4	1.2	1.5	1.2	1.3	1.5	1.4	1.3	1.2	1.1	1.3	1.3	1.3	1.4	1.4	1.2	1.4
Saldo / Balance	-0.4	-0.5	-0.2	-0.2	-0.1	-0.5	-0.2	-0.3	-0.2	-0.3	-0.1	-0.1	-0.3	-0.4	-0.1	-0.1	-0.1	-0.2	-0.3	-0.2	-0.2	-0.1	-0.1	-0.2

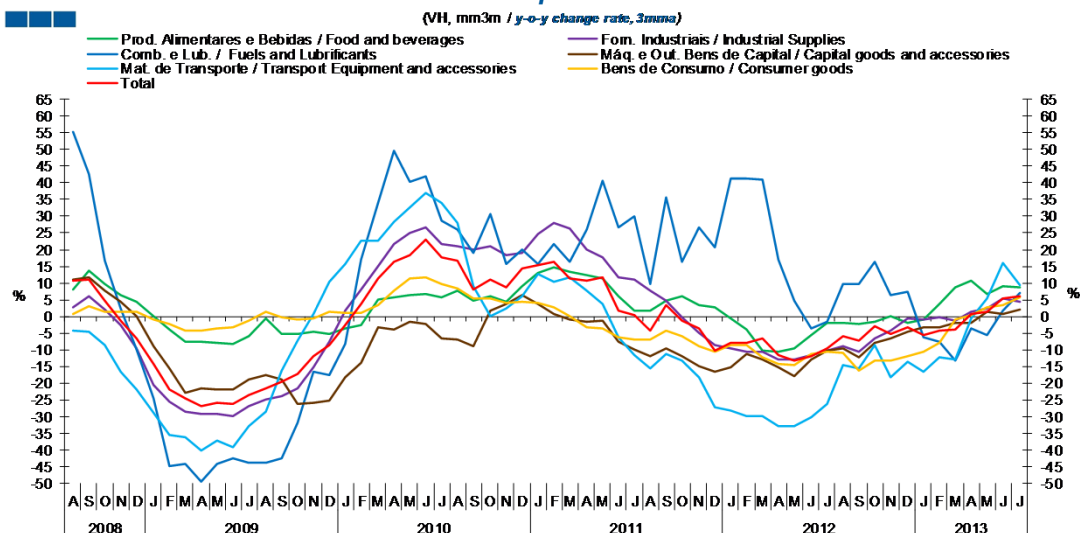
5. Grandes Categorias Económicas / Broad Economic Categories

Gráfico / Graph 5.1.
Exportações
Exports



	2011			2012					2013															
	A	S	O	N	D	J	F	M	A	M	J	J	A	S	O	N	D	J	F	M	A	M	J	J
Produtos Alimentares e Bebidas / Food and Beverages	10.9	9.4	13.0	14.8	17.5	16.0	11.1	9.4	4.2	3.9	1.8	6.4	8.1	4.6	5.2	2.1	3.2	3.7	6.9	6.2	9.2	9.9	14.9	9.8
Comb. e Lub. / Fuels and Lubricants	11.5	28.6	50.1	81.9	83.5	97.4	115.7	93.8	42.6	19.2	23.1	33.1	45.6	22.3	12.1	-10.5	-8.8	0.8	4.3	23.1	42.8	52.2	36.4	20.8
Mat. de Transporte / Transport equipment and accessories	19.8	17.4	16.7	18.2	8.7	6.3	1.7	7.4	6.5	4.9	0.6	-1.8	-7.5	-11.9	-14.7	-14.1	-14.8	-14.0	-14.9	-15.6	-12.0	-8.1	-3.3	-3.3
Forn. Industriais / Industrial Supplies	16.2	16.5	18.2	16.0	12.0	6.6	2.2	1.2	0.1	0.2	2.1	3.8	5.2	2.3	3.1	0.7	2.3	3.5	2.3	0.0	0.4	3.0	4.8	2.4
Máq. e Out. Bens de Capital / Capital Goods and Accessories	16.1	10.1	12.1	14.3	14.2	14.3	15.3	23.2	24.7	22.2	20.1	20.3	25.5	19.0	18.1	12.9	13.0	12.4	11.0	8.4	4.6	5.7	6.7	9.0
Bens de Consumo / Consumer Goods	13.1	13.6	10.6	6.0	2.8	3.6	2.5	3.2	-0.1	0.1	1.6	2.1	4.3	-0.7	3.0	2.4	4.9	5.2	4.8	5.8	7.9	9.3	7.8	3.8
Total	15.3	15.3	16.9	17.2	13.9	12.0	9.6	10.1	6.7	5.0	5.1	6.4	8.1	2.7	2.5	-1.1	0.3	1.6	1.4	1.6	4.1	6.8	7.6	4.7

Gráfico / Graph 5.2.
Importações
Imports



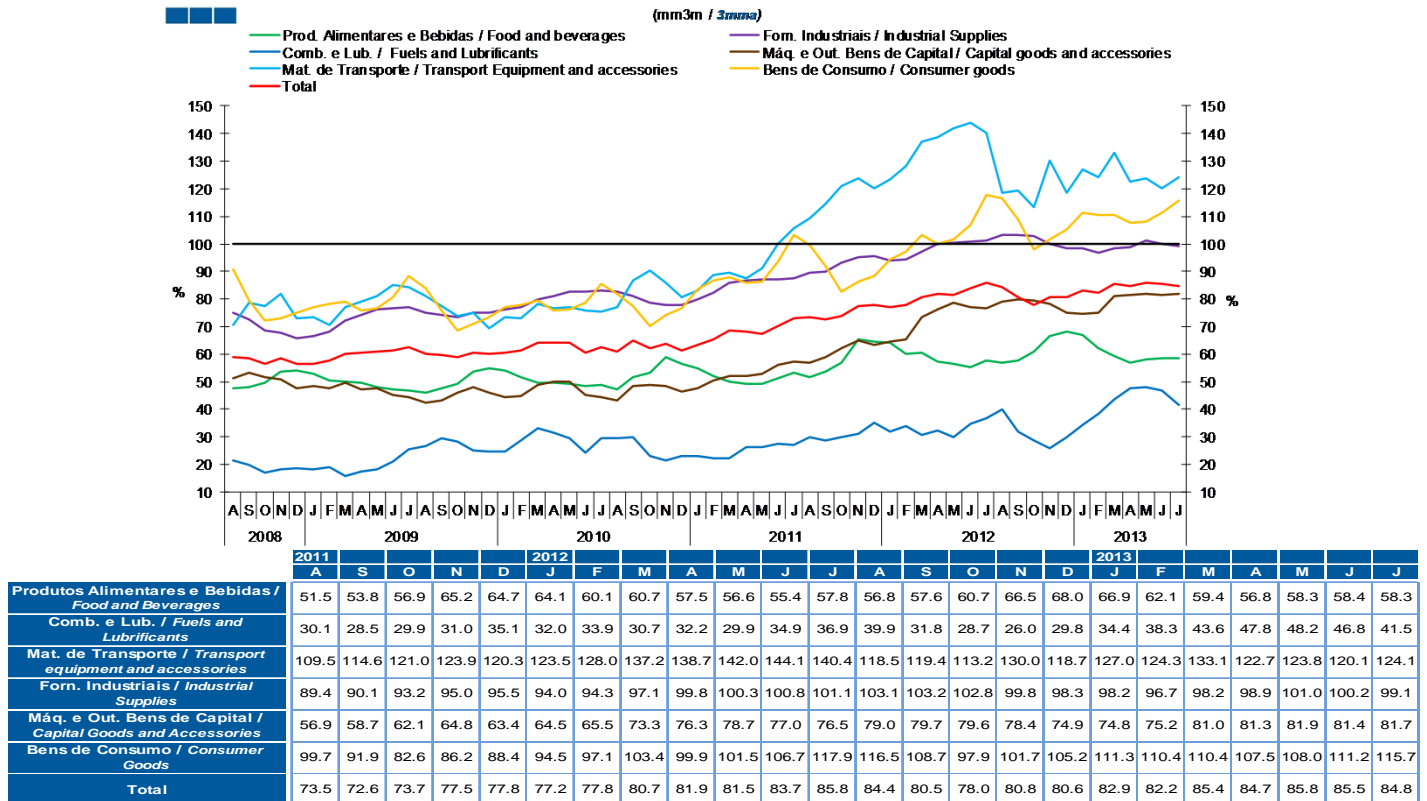
	2011			2012					2013															
	A	S	O	N	D	J	F	M	A	M	J	J	A	S	O	N	D	J	F	M	A	M	J	J
Produtos Alimentares e Bebidas / Food and Beverages	1.6	4.9	6.0	3.5	2.7	-0.7	-4.0	-10.1	-10.7	-9.7	-5.7	-1.8	-2.0	-2.2	-1.4	0.1	-1.8	-0.8	3.6	8.6	10.5	6.8	9.2	8.8
Comb. e Lub. / Fuels and Lubricants	9.6	35.6	16.3	26.6	20.8	41.1	41.3	40.9	16.9	4.7	-3.6	-1.6	9.6	9.7	16.5	6.4	7.3	-6.4	-7.5	-13.2	-3.7	-5.7	1.7	7.2
Mat. de Transporte / Transport equipment and accessories	-15.6	-11.1	-13.1	-18.2	-27.1	-28.3	-29.7	-29.8	-32.9	-32.8	-30.3	-26.1	-14.5	-15.5	-8.7	-18.1	-13.6	-16.4	-12.3	-13.0	-0.5	5.5	16.0	9.4
Forn. Industriais / Industrial Supplies	7.6	4.8	-0.2	-4.9	-8.6	-9.5	-10.6	-10.5	-13.0	-13.0	-11.6	-10.1	-8.8	-10.6	-6.5	-4.2	-0.6	-0.9	-0.2	-1.2	1.3	2.3	5.4	4.5
Máq. e Out. Bens de Capital / Capital Goods and Accessories	-11.8	-9.4	-12.0	-14.9	-16.6	-15.3	-11.1	-12.8	-15.2	-17.8	-12.8	-10.1	-9.6	-12.3	-7.8	-6.7	-4.5	-3.1	-3.2	-1.9	-1.8	1.5	0.9	2.1
Bens de Consumo / Consumer Goods	-6.9	-4.3	-5.8	-8.9	-10.7	-8.5	-8.7	-12.1	-14.2	-14.7	-11.1	-10.5	-10.8	-16.1	-13.1	-13.1	-11.9	-10.7	-7.8	-1.0	0.3	2.7	3.4	5.8
Total	-4.3	3.3	-1.2	-3.6	-10.2	-8.0	-8.0	-6.5	-11.4	-13.1	-12.0	-9.7	-5.9	-7.4	-3.1	-5.1	-3.2	-5.5	-4.1	-4.0	0.7	1.5	5.4	5.9

Nota: Não inclui Bens N.E. Noutra Categoria devido ao seu reduzido valor relativo e elevada variabilidade.

Note: Does not include Goods Not Elsewhere Specified because of its small relative value and high variability

5. Grandes Categorias Económicas / Broad Economic Categories

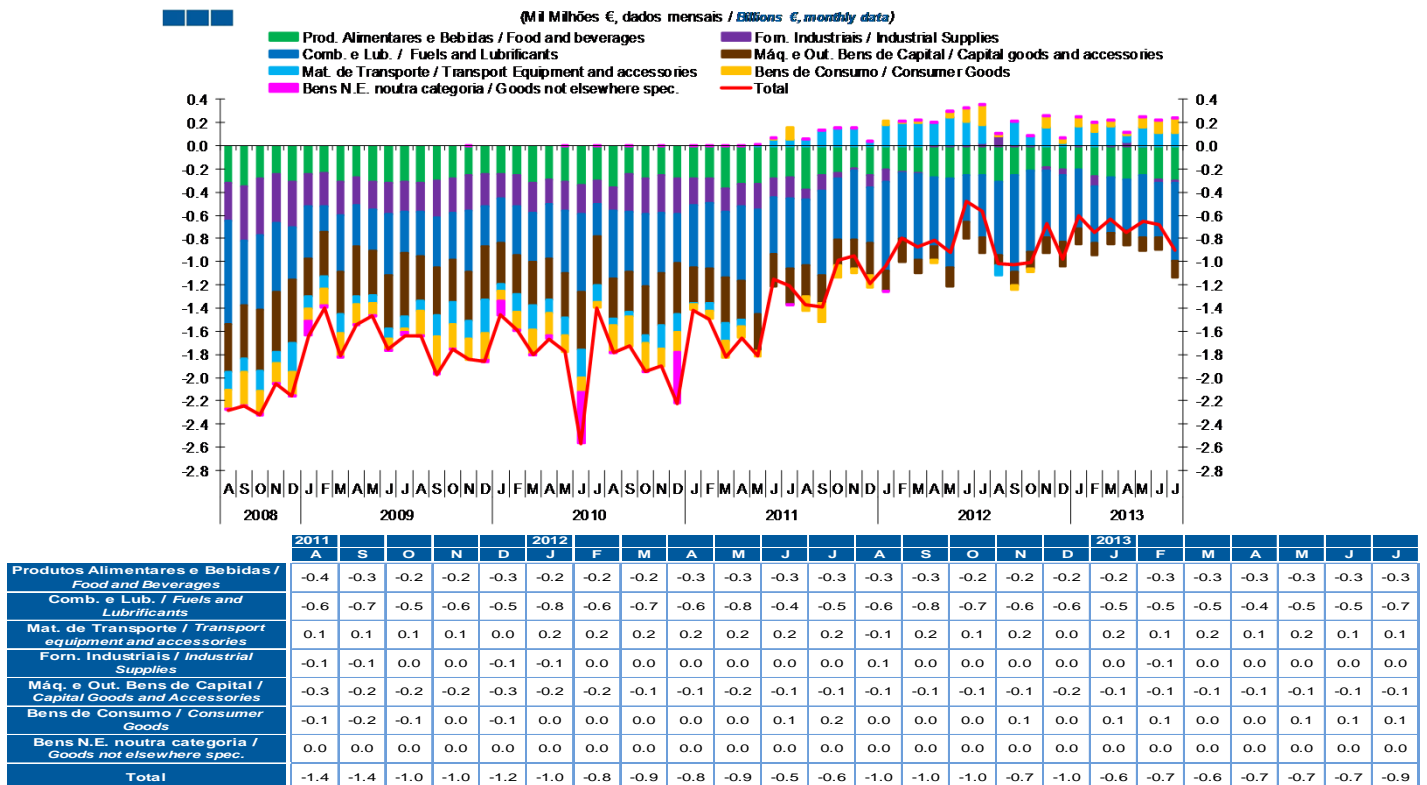
Gráfico / Graph 5.3.
Taxa de Cobertura
Coverage Rate



Nota: Não inclui Bens N.E. Outra Categoria devido ao seu reduzido valor relativo e elevada variabilidade.

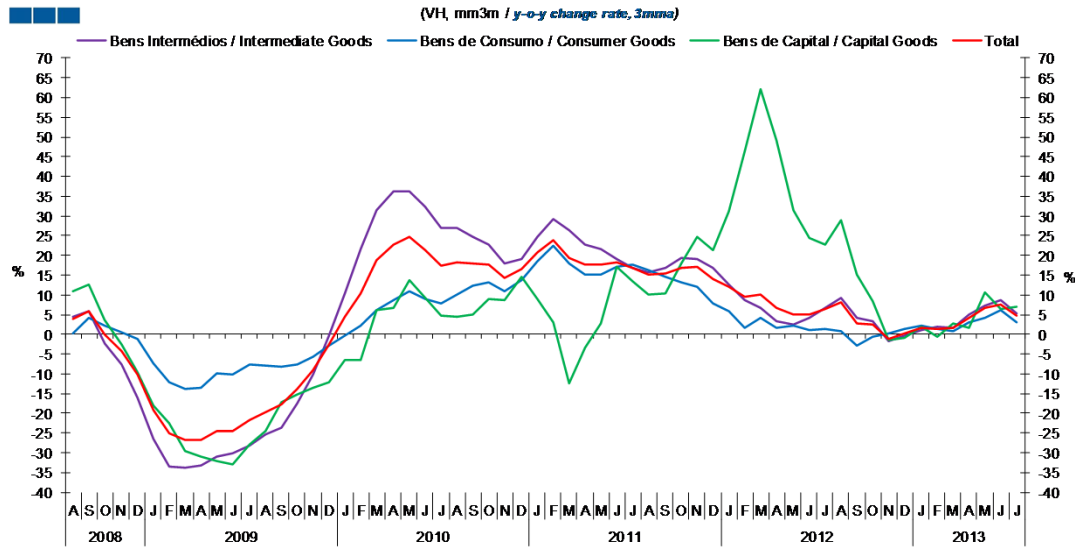
Note: Does not include Goods Not Elsewhere Specified because of its small relative value and high variability

Gráfico / Graph 5.4.
Saldo
Balance



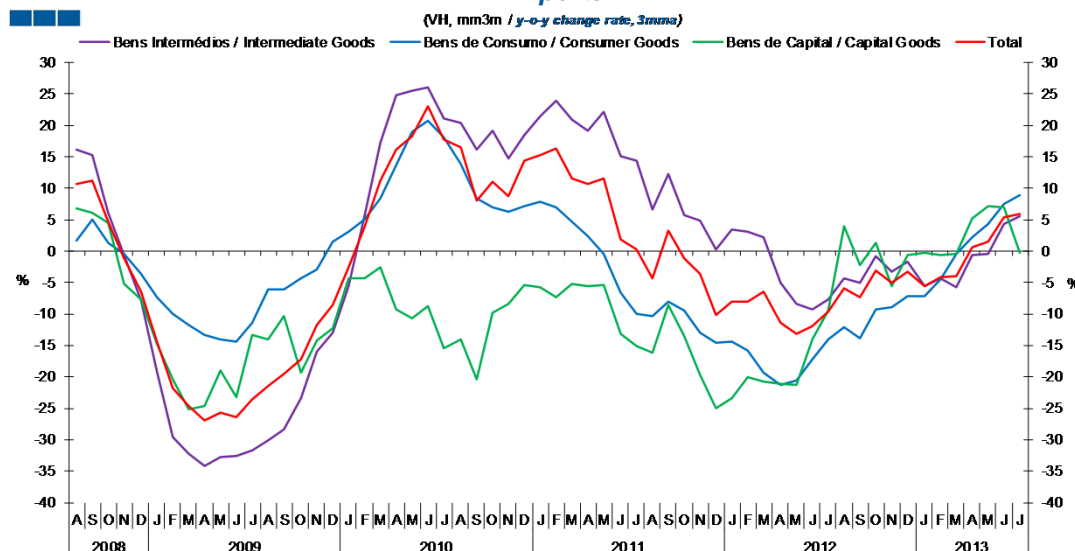
6. Classes Básicas de Bens do Sistema Europeu de Contas Nacionais / Basic Classes of Goods in the European System of Accounts

Gráfico / Graph 6.1.
 Exportações
 Exports



	2011					2012					2013													
	A	S	O	N	D	J	F	M	A	M	J	J	A	S	O	N	D	J	F	M	A	M	J	J
Bens Intermediários / Intermediate Goods	15.6	16.7	19.3	19.2	16.7	12.8	8.7	6.6	3.5	2.6	4.2	6.7	9.2	4.1	3.3	-1.8	-0.3	1.1	1.8	1.7	5.1	7.4	8.5	5.2
Bens de Consumo / Consumer Goods	16.2	14.7	13.2	12.2	7.7	5.7	1.8	4.1	1.7	2.1	1.2	1.4	0.9	-2.9	-0.6	0.1	1.5	2.1	1.3	0.8	3.1	4.3	6.3	3.1
Bens de Capital / Capital Goods	10.1	10.4	18.0	24.6	21.2	31.2	46.5	62.0	49.2	31.4	24.4	22.7	29.0	15.2	8.4	-1.3	-0.9	2.0	-0.6	2.8	1.6	10.5	6.6	7.0
Total	15.3	15.3	16.9	17.2	13.9	12.0	9.6	10.1	6.7	5.0	5.1	6.4	8.1	2.7	2.5	-1.1	0.3	1.6	1.4	1.6	4.1	6.8	7.6	4.7

Gráfico / Graph 6.2.
 Importações
 Imports

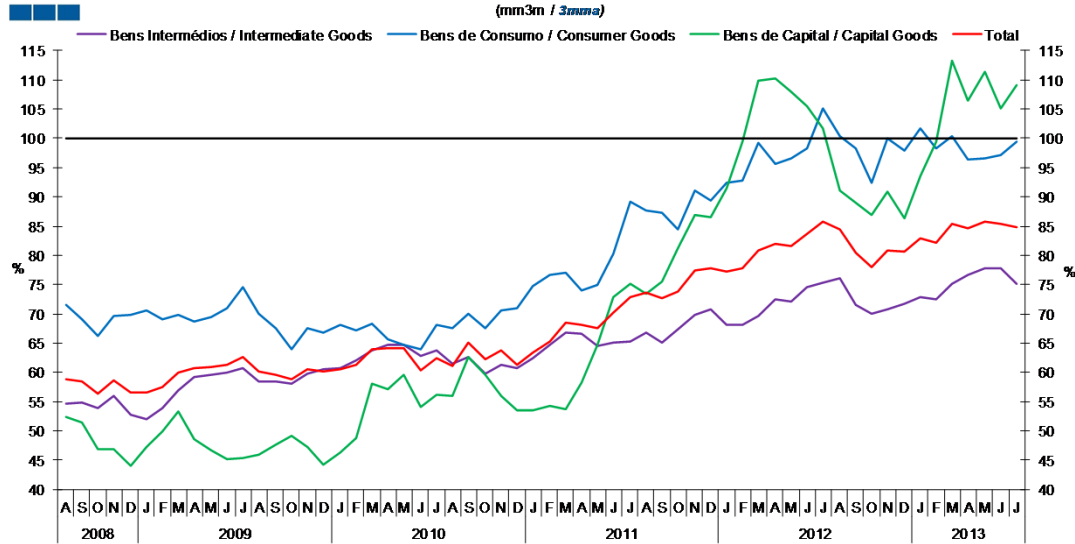


	2011					2012					2013													
	A	S	O	N	D	J	F	M	A	M	J	J	A	S	O	N	D	J	F	M	A	M	J	J
Bens Intermediários / Intermediate Goods	6.6	12.2	5.8	4.8	0.2	3.5	3.2	2.2	-5.0	-8.3	-9.2	-7.7	-4.3	-5.1	-0.7	-3.3	-1.6	-5.5	-4.3	-5.8	-0.6	-0.4	4.3	5.6
Bens de Consumo / Consumer Goods	-10.2	-8.1	-9.4	-13.0	-14.6	-14.4	-15.8	-19.3	-21.3	-20.7	-17.3	-14.0	-12.0	-13.8	-9.2	-8.8	-7.2	-7.2	-4.5	-0.4	2.3	4.3	7.6	8.9
Bens de Capital / Capital Goods	-16.2	-8.5	-13.5	-19.7	-25.0	-23.4	-20.1	-20.7	-21.1	-21.2	-14.1	-9.4	4.0	-2.2	1.4	-5.5	-0.6	-0.2	-0.6	-0.4	5.2	7.2	7.1	-0.2
Total	-4.3	3.3	-1.2	-3.6	-10.2	-8.0	-8.0	-6.5	-11.4	-13.1	-12.0	-9.7	-5.9	-7.4	-3.1	-5.1	-3.2	-5.5	-4.1	-4.0	0.7	1.5	5.4	5.9

Nota: Não inclui a série Outros Bens devido ao seu baixo valor relativo e elevada variabilidade.
 Note: Does not include Other Goods because of its small relative value and high variability.

6. Classes Básicas de Bens do Sistema Europeu de Contas Nacionais / Basic Classes of Goods in the European System of Accounts

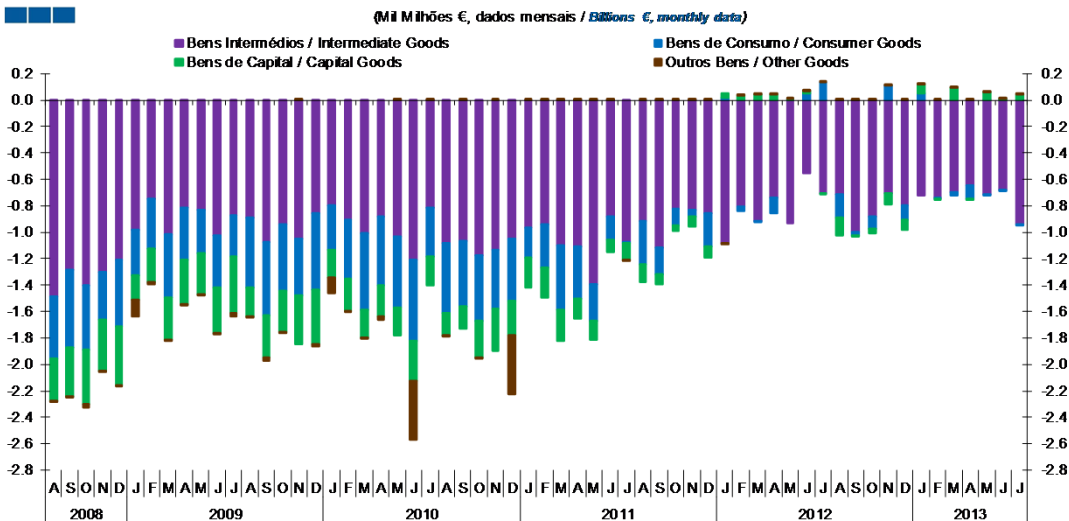
Gráfico / Graph 6.3.
 Taxa de Cobertura
 Coverage Rate



	2011					2012					2013													
	A	S	O	N	D	J	F	M	A	M	J	J	A	S	O	N	D	J	F	M	A	M	J	J
Bens Intermediários / Intermediate Goods	66.7	65.2	67.3	69.7	70.7	68.0	68.1	69.6	72.5	72.1	74.7	75.4	76.1	71.5	70.1	70.8	71.7	72.8	72.6	75.2	76.7	77.7	77.7	75.1
Bens de Consumo / Consumer Goods	87.6	87.3	84.4	91.0	89.4	92.5	92.7	99.3	95.6	96.5	98.3	105.2	100.4	98.3	92.4	99.9	97.8	101.7	98.4	100.4	96.3	96.5	97.1	99.5
Bens de Capital / Capital Goods	73.5	75.5	81.3	87.0	86.4	91.5	99.4	109.8	110.3	108.0	105.5	101.7	91.1	88.9	86.8	90.8	86.2	93.6	99.4	113.3	106.5	111.4	105.1	109.1
Total	73.5	72.6	73.7	77.5	77.8	77.2	77.8	80.7	81.9	81.5	83.7	85.8	84.4	80.5	78.0	80.8	80.6	82.9	82.2	85.4	84.7	85.8	85.5	84.8

Nota: Não inclui a série Outros Bens devido ao seu baixo valor relativo e elevada variabilidade.
 Note: Does not include Other Goods because of its small relative value and high variability.

Gráfico / Graph 6.4.
 Saldo de Bens
 Balance of Goods



	2011					2012					2013													
	A	S	O	N	D	J	F	M	A	M	J	J	A	S	O	N	D	J	F	M	A	M	J	J
Bens Intermediários / Intermediate Goods	-0.9	-1.1	-0.8	-0.8	-0.9	-1.1	-0.8	-0.9	-0.7	-0.9	-0.6	-0.7	-0.7	-1.0	-0.9	-0.7	-0.8	-0.7	-0.7	-0.7	-0.6	-0.7	-0.7	-0.9
Bens de Consumo / Consumer Goods	-0.3	-0.2	-0.1	-0.1	-0.3	0.0	0.0	0.0	-0.1	0.0	0.1	0.1	-0.2	0.0	-0.1	0.1	-0.1	0.1	0.0	0.0	-0.1	0.0	0.0	0.0
Bens de Capital / Capital Goods	-0.1	-0.1	0.0	-0.1	-0.1	0.0	0.0	0.0	0.0	0.0	0.0	0.0	-0.1	0.0	0.0	-0.1	-0.1	0.1	0.0	0.1	0.0	0.1	0.0	0.0
Outros Bens / Other Goods	0.0	0.0	0.0	0.0	0.0	0.0	0.0	0.0	0.0	0.0	0.0	0.0	0.0	0.0	0.0	0.0	0.0	0.0	0.0	0.0	0.0	0.0	0.0	0.0
Total	-1.4	-1.4	-1.0	-1.0	-1.2	-1.0	-0.8	-0.9	-0.8	-0.9	-0.5	-0.6	-1.0	-1.0	-1.0	-0.7	-1.0	-0.6	-0.7	-0.6	-0.7	-0.7	-0.7	-0.9

6. Classes Básicas de Bens do Sistema Europeu de Contas Nacionais / Basic Classes of Goods in the European System of Accounts

Tabela / Table 1.1.
Estrutura do Saldo
Balance Structure

Milhões de euros \ Millions of euros

		2012		S		O		N		D		2013		J		F		M		A		M		J		J			
		A		M€	%	M€	%	M€	%	M€	%	M€	%	M€	%	M€	%	M€	%	M€	%	M€	%	M€	%	M€	%	M€	%
		M€	%	M€	%	M€	%	M€	%	M€	%	M€	%	M€	%	M€	%	M€	%	M€	%	M€	%	M€	%	M€	%	M€	%
Bens Intermedios / Intermediate Goods	Prod. alim. e bebidas / Foods and beverages	-168	17	-168	16	-170	17	-138	21	-123	13	-131	22	-147	20	-163	26	-146	19	-106	16	-151	22	-157	17				
	Forn. industriais NE noutra categoria / Industrial supplies NE specified	79	-8	13	-1	9	-1	-29	4	-45	5	7	-1	-87	12	9	-1	34	-5	0	0	-28	4	-12	1				
	Comb. e lubrificantes / Fuel and lubricants	-689	68	-863	84	-718	72	-540	81	-624	64	-597	100	-543	73	-581	92	-533	71	-603	92	-511	75	-742	82				
	Máquinas, outros bens de capital (Partes e acessórios) / Capital goods and parts and accessories	-38	4	-49	5	-53	5	-45	7	-52	5	-55	9	-48	6	-32	5	-65	9	-63	10	-32	5	-45	5				
	Material de transportes (Partes e acessórios) / Transport equipment (Parts and accessories)	103	-10	69	-7	51	-5	48	-7	47	-5	53	-9	87	-12	73	-12	66	-9	55	-8	43	-6	15	-2				
Total		-713	70	-999	97	-881	88	-705	106	-798	82	-724	121	-738	99	-693	109	-644	86	-716	109	-680	100	-940	104				
Bens de Consumo / Consumption Goods	Prod. alim. e bebidas destinados ao consumo dos particulares / Food and beverages mainly for household consumption	-144	14	-83	8	-47	5	-49	7	-81	8	-74	12	-113	15	-113	18	-142	19	-148	23	-137	20	-148	16				
	Material de transporte / Transport equipment	-49	5	91	-9	-16	2	68	-10	-61	6	48	-8	30	-4	35	-6	21	-3	58	-9	26	-4	22	-2				
	Bens de consumo NE noutra categoria / Consumption goods NE specified	19	-2	-31	3	-31	3	95	-14	37	-4	78	-13	77	-10	47	-7	21	-3	86	-13	103	-15	120	-13				
Total		-174	17	-23	2	-93	9	114	-17	-105	11	52	-9	-6	1	-31	5	-100	13	-4	1	-9	1	-7	1				
Bens de Capital / Capital Goods	Carburantes para motor / Motor spirit	59	-6	29	-3	22	-2	-32	5	40	-4	89	-15	55	-7	100	-16	87	-12	68	-10	36	-5	64	-7				
	Máquinas, outros bens de capital (exceto material de transporte) / Capital goods (except transport equipment)	-53	5	-73	7	-95	9	-93	14	-151	15	-81	14	-63	8	-59	9	-63	8	-51	8	-68	10	-94	10				
	Material de transportes destinado à indústria / Transport equipment, industrial	-139	14	38	-4	40	-4	45	-7	36	-4	62	-10	5	-1	49	-8	-31	4	46	-7	42	-6	74	-8				
Total		-133	13	-6	1	-34	3	-80	12	-75	8	70	-12	-3	0	90	-14	-6	1	63	-10	9	-1	44	-5				
Outros / Others		1	0	2	0	5	-1	3	0	1	0	1	0	2	0	1	0	3	0	2	0	1	0	2	0				
Total		-1,020	100	-1,027	100	-1,003	100	-668	100	-977	100	-600	100	-745	100	-634	100	-747	100	-655	100	-678	100	-902	100				

7. Índice GEE de Comércio Internacional de Bens / *GEE Index of International Trade of Goods*

Gráfico / *Graph 7.1.*
 Total

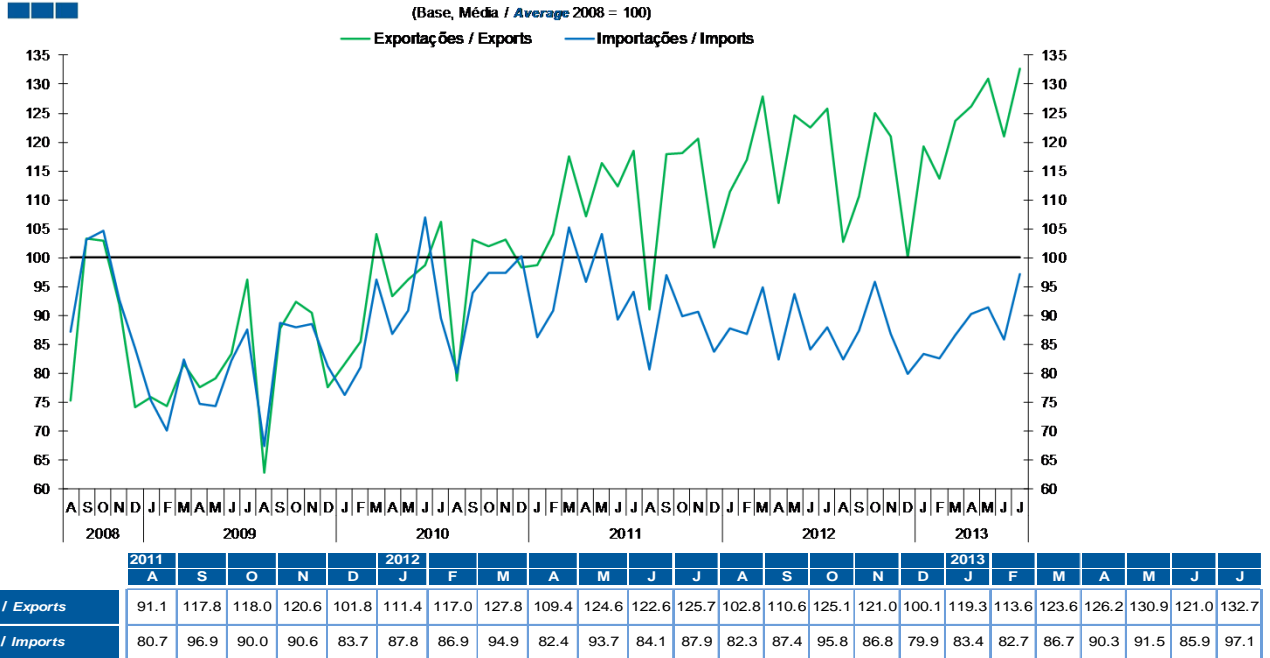
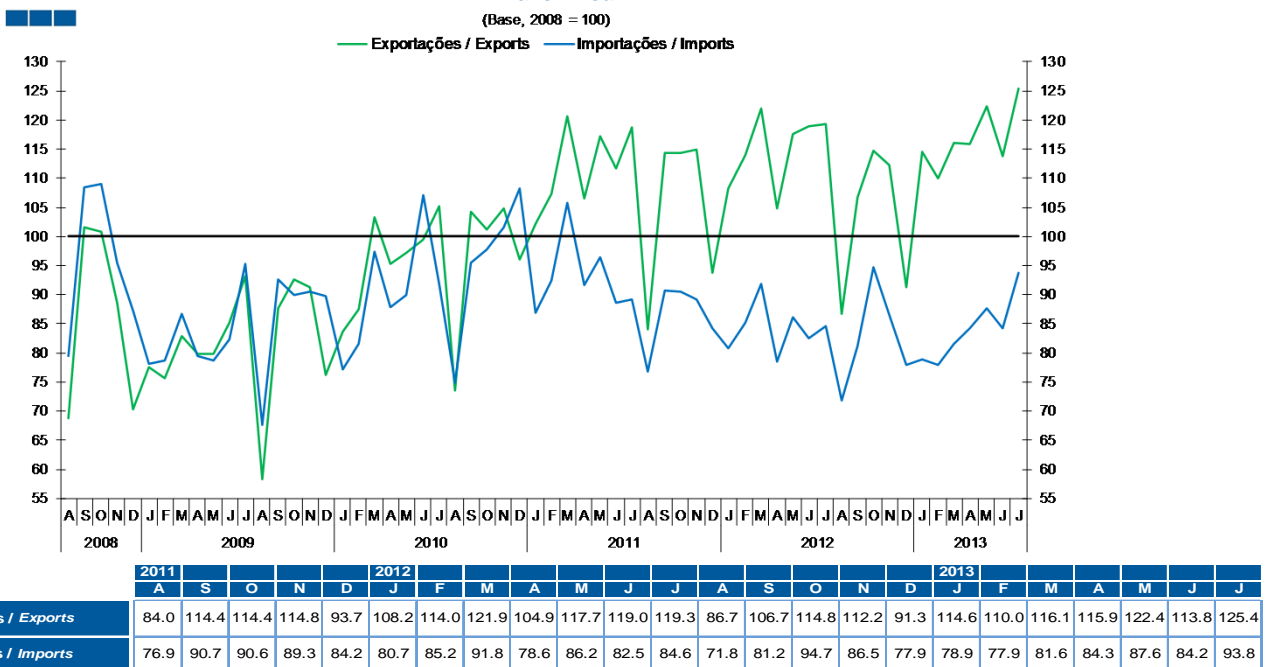


Gráfico / *Graph 7.2.*
 Zona Euro
 Euro Area



7. Índice GEE de Comércio Internacional de Bens / *GEE Index of International Trade of Goods*

Gráfico / Graph 7.3.
Intracomunitário
Intra-Community

(Base, 2008 = 100)

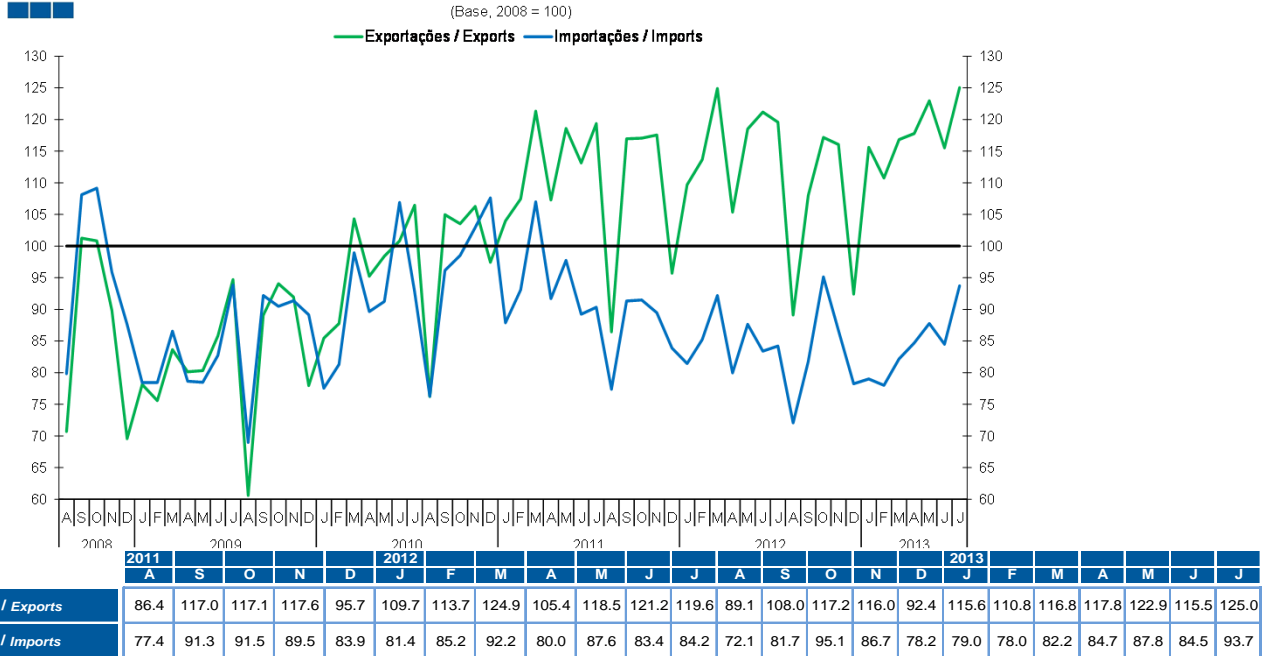


Gráfico / Graph 7.4.
Extracomunitário
Extra-Community

(Base, 2008 = 100)

