

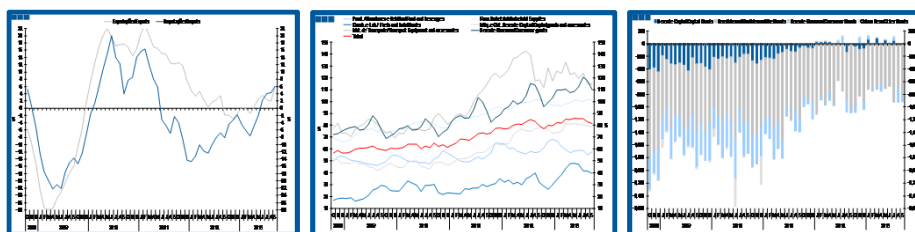
Estatísticas Temáticas de Conjuntura

Short-term Thematic Statistics

- Nº 11/2013 -

11 de novembro de 2013

November, 11, 2013



Comércio Internacional de Bens

International Trade of Goods

- Setembro de 2013 -

- September, 2013 -

Fonte: Instituto Nacional de Estatística

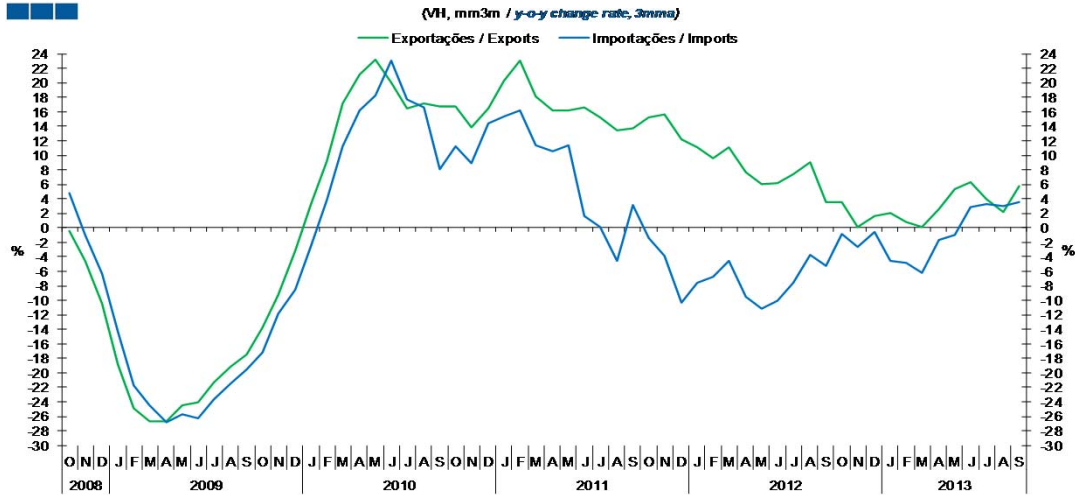
Source: Statistics Portugal

Índice / Index

	Página / Page
1. Total	
Importações e Exportações / <i>Imports and Exports</i>	3
Taxa de Cobertura / <i>Coverage Rate</i>	3
Saldo / <i>Balance</i>	4
2. Zona Euro-17 / <i>Euro Area-17</i>	
Importações e Exportações / <i>Imports and Exports</i>	5
Taxa de Cobertura / <i>Coverage Rate</i>	5
Saldo / <i>Balance</i>	6
3. Intracomunitário / <i>Intra-Community</i>	
Importações e Exportações / <i>Imports and Exports</i>	7
Taxa de Cobertura / <i>Coverage Rate</i>	7
Saldo / <i>Balance</i>	8
4. Extracomunitário / <i>Extra-Community</i>	
Importações e Exportações / <i>Imports and Exports</i>	9
Taxa de Cobertura / <i>Coverage Rate</i>	9
Saldo / <i>Balance</i>	10
5. Grandes Categorias Económicas / <i>Broad Economic Categories</i>	
Exportações / <i>Exports</i>	11
Importações / <i>Imports</i>	11
Taxa de Cobertura / <i>Coverage Rate</i>	12
Saldo / <i>Balance</i>	12
6. Classes Básicas de Bens do Sistema Europeu de Contas Nacionais / <i>Basic Classes of Goods in the European System of Accounts</i>	
Exportações / <i>Exports</i>	13
Importações / <i>Imports</i>	13
Taxa de Cobertura / <i>Coverage Rate</i>	14
Saldo / <i>Balance</i>	14
Estrutura do Saldo / <i>Balance Structure</i>	15
7. Índice GEE de Comércio Internacional de Bens / <i>GEE Index of International Trade of Goods</i>	
Total / <i>Total</i>	16
Zona Euro / <i>Euro Area</i>	16
Intracomunitário / <i>Intra-Community</i>	17
Extracomunitário / <i>Extra-Community</i>	17

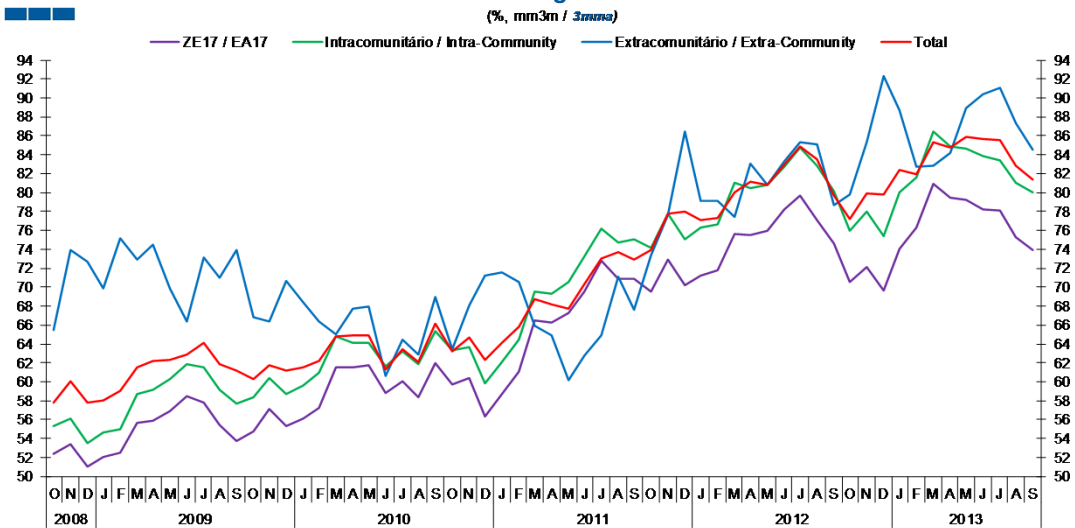
1. Total

Gráfico / Graph 1.1.
 Importações e Exportações
 Imports and Exports



	2011			2012					2013															
	O	N	D	J	F	M	A	M	J	J	A	S	O	N	D	J	F	M	A	M	J	J	A	S
Exportações / Exports	15.2	15.7	12.2	11.1	9.6	11.2	7.7	6.0	6.1	7.4	9.1	3.6	3.5	0.1	1.7	2.0	0.9	0.1	2.6	5.3	6.2	4.0	2.2	5.8
Importações / Imports	-1.4	-3.8	-10.4	-7.6	-6.8	-4.5	-9.5	-11.2	-10.0	-7.6	-3.7	-5.2	-0.8	-2.7	-0.6	-4.5	-4.8	-6.2	-1.7	-0.9	2.8	3.2	3.1	3.6

Gráfico / Graph 1.2.
 Taxa de Cobertura
 Coverage Rate

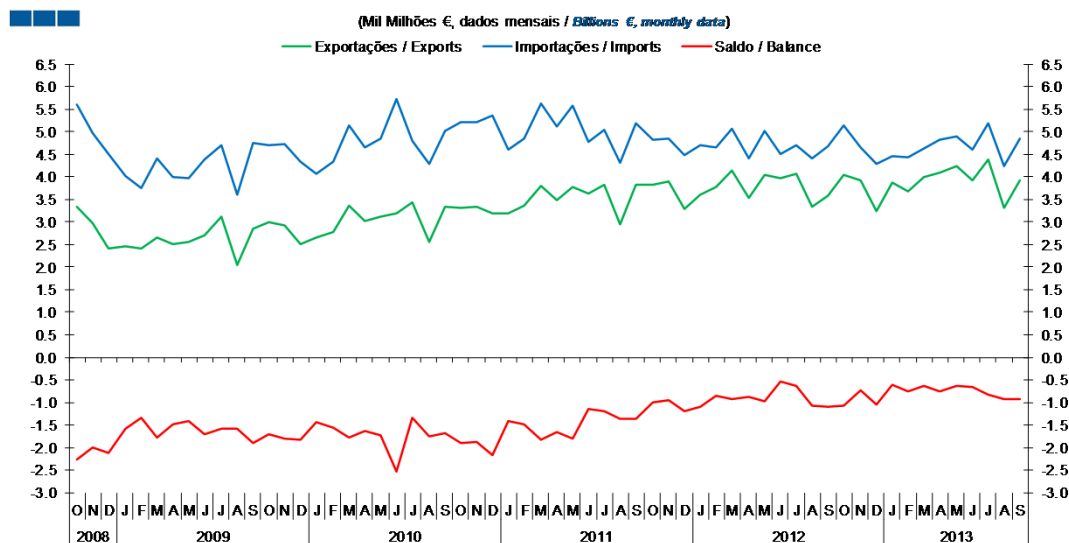


Fonte / Source: INE

	2011			2012					2013															
	O	N	D	J	F	M	A	M	J	J	A	S	O	N	D	J	F	M	A	M	J	J	A	S
ZE 17 / EA 17	69.6	72.9	70.2	71.2	71.8	75.6	75.5	76.0	78.2	79.6	77.0	74.6	70.5	72.1	69.6	74.1	76.3	80.9	79.4	79.3	78.2	78.0	75.3	74.0
Intracomunitário / Intra-community	74.2	77.7	75.1	76.3	76.7	81.0	80.5	80.8	82.8	84.7	82.9	80.1	76.0	78.0	75.4	80.0	81.6	86.4	84.9	84.7	83.8	83.4	81.0	80.0
Extracomunitário / Extra-community	73.3	77.7	86.5	79.1	79.1	77.4	83.0	80.8	83.3	85.3	85.1	78.7	79.8	85.3	92.3	88.7	82.8	82.9	84.2	88.9	90.4	91.1	87.3	84.6
Total	73.9	77.7	78.0	77.1	77.3	80.0	81.1	80.8	82.9	84.9	83.5	79.7	77.1	79.9	79.8	82.3	81.9	85.4	84.7	85.9	85.7	85.5	82.8	81.3

1. Total

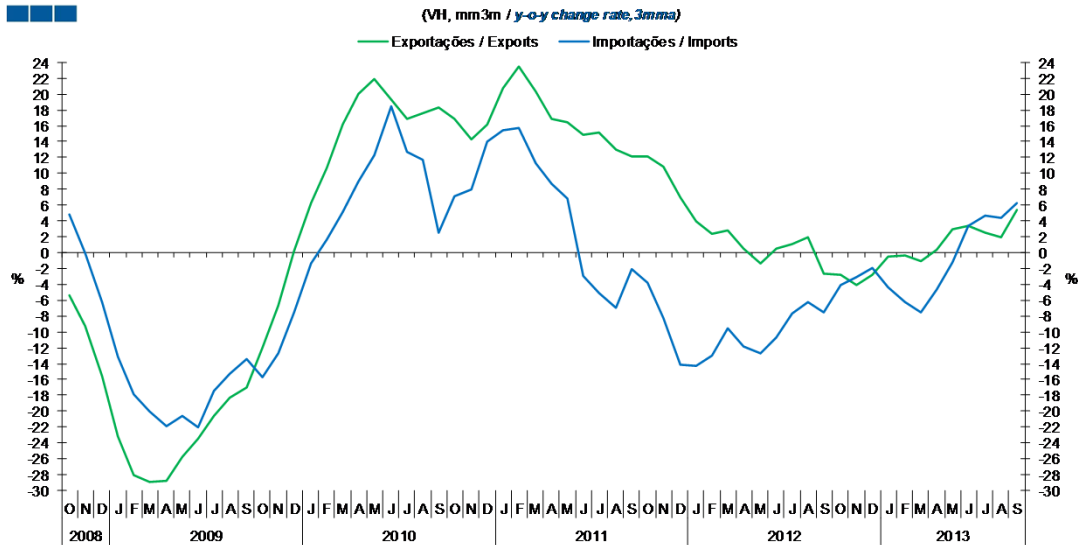
Gráfico / Graph 1.3.
 Saldo
 Balance



	2011			2012					2013															
	O	N	D	J	F	M	A	M	J	J	A	S	O	N	D	J	F	M	A	M	J	J	A	S
Exportações / Exports	3.8	3.9	3.3	3.6	3.8	4.1	3.5	4.0	4.0	4.1	3.3	3.6	4.0	3.9	3.2	3.9	3.7	4.0	4.1	4.2	3.9	4.4	3.3	3.9
Importações / Imports	4.8	4.8	4.5	4.7	4.6	5.1	4.4	5.0	4.5	4.7	4.4	4.7	5.1	4.6	4.3	4.5	4.4	4.6	4.8	4.9	4.6	5.2	4.2	4.8
Saldo / Balance	-1.0	-0.9	-1.2	-1.1	-0.9	-0.9	-0.9	-1.0	-0.5	-0.6	-1.1	-1.1	-1.1	-0.7	-1.0	-0.6	-0.7	-0.6	-0.7	-0.6	-0.7	-0.8	-0.9	-0.9

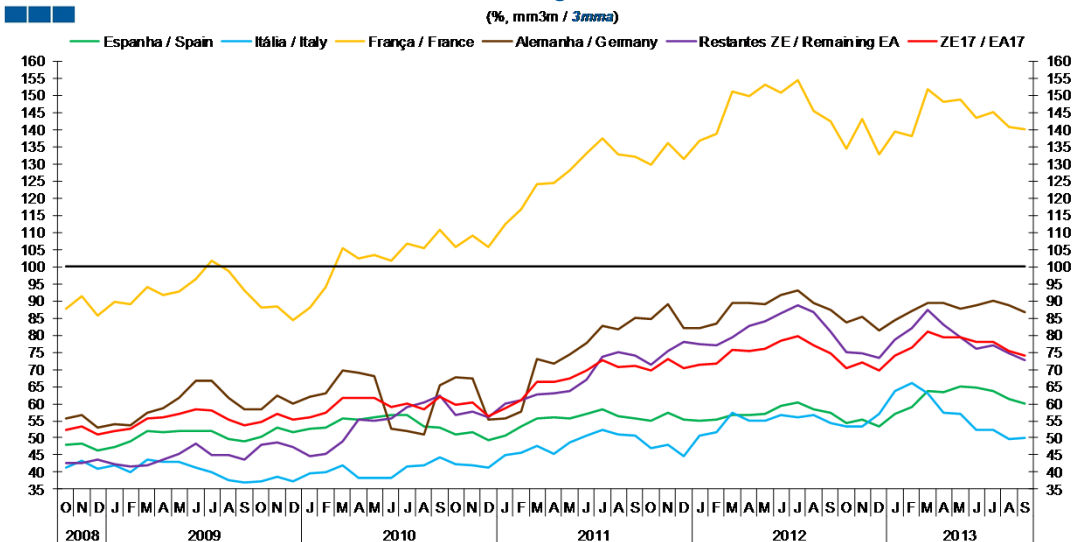
2. Zona Euro-17 / Euro Area-17

Gráfico / Graph 2.1.
Importações e Exportações
Imports and Exports



	2011			2012			2013																	
	O	N	D	J	F	M	A	M	J	J	A	S	O	N	D	J	F	M	A	M	J	J	A	S
Exportações / Exports	12.2	10.8	6.9	4.0	2.4	2.8	0.5	-1.4	0.4	1.1	2.0	-2.7	-2.8	-4.1	-2.8	-0.5	-0.4	-1.0	0.3	2.9	3.3	2.5	2.0	5.4
Importações / Imports	-3.7	-8.3	-14.2	-14.3	-13.0	-9.6	-11.8	-12.7	-10.6	-7.7	-6.2	-7.5	-4.1	-3.0	-1.9	-4.3	-6.2	-7.5	-4.6	-1.3	3.4	4.6	4.4	6.3

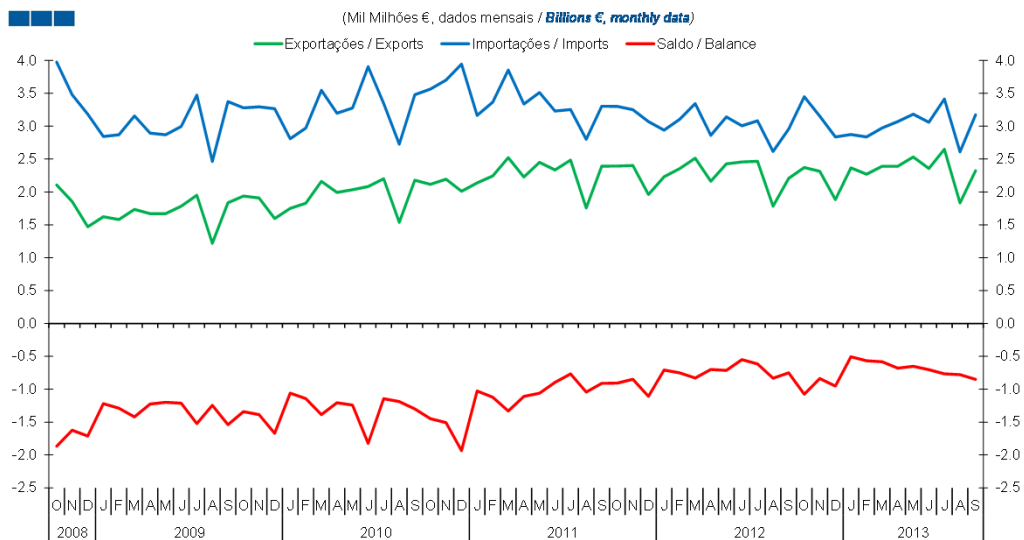
Gráfico / Graph 2.2.
Taxa de Cobertura
Coverage Rate



	2011			2012			2013																	
	O	N	D	J	F	M	A	M	J	J	A	S	O	N	D	J	F	M	A	M	J	J	A	S
Espanha / Spain	55.0	57.2	55.2	54.9	55.3	56.8	56.7	57.0	59.4	60.4	58.5	57.3	54.5	55.4	53.4	57.0	59.0	63.6	63.4	64.9	64.8	63.8	61.2	60.1
Itália / Italy	47.1	48.1	44.6	50.8	51.7	57.4	55.0	55.1	56.6	55.9	56.6	54.2	53.3	53.2	57.1	63.6	65.9	63.0	57.5	57.0	52.4	52.2	49.6	50.0
França / France	129.6	136.0	131.4	136.8	138.7	151.1	149.7	153.3	150.8	154.6	145.4	142.5	134.5	143.1	132.7	139.5	138.2	151.9	148.2	148.7	143.5	145.0	140.9	140.2
Alemanha / Germany	84.7	88.9	82.1	82.1	83.4	89.5	89.3	89.0	91.8	92.9	89.5	87.5	83.5	85.4	81.2	84.3	87.0	89.5	89.5	87.6	88.8	90.0	88.8	86.9
Restantes ZE / Remaining EA	71.3	75.5	78.1	77.2	76.9	79.3	82.8	84.1	86.2	88.7	86.6	81.0	74.9	74.7	73.5	78.6	82.1	87.2	83.1	79.4	76.0	77.1	74.6	72.8
ZE 17 / EA 17	69.6	72.9	70.2	71.2	71.8	75.6	75.5	76.0	78.2	79.6	77.0	74.6	70.5	72.1	69.6	74.1	76.3	80.9	79.4	79.3	78.2	78.0	75.3	74.0

2. Zona Euro-17 / Euro Area-17

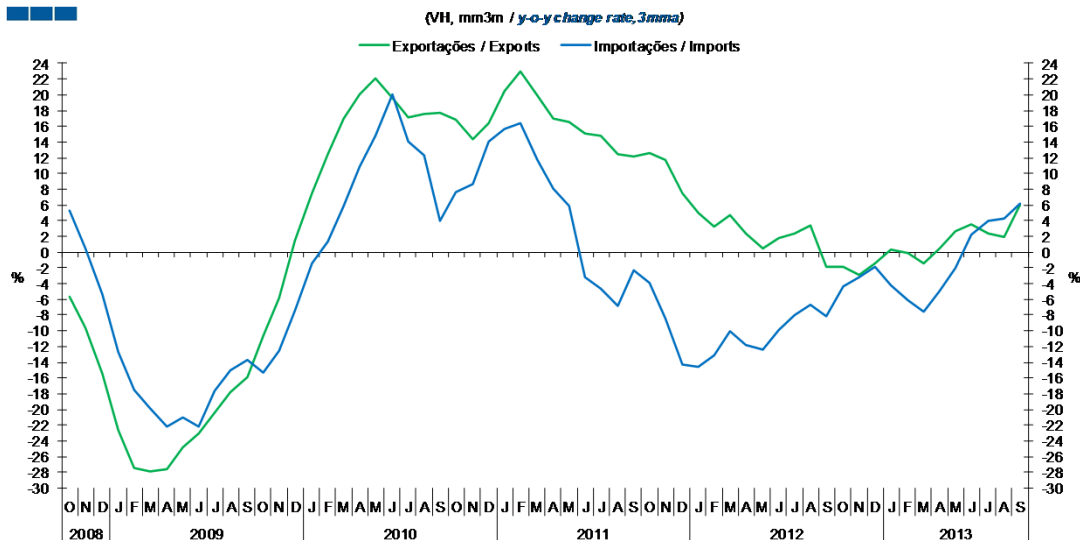
Gráfico / Graph 2.3.
Saldo
Balance



	2011			2012												2013								
	O	N	D	J	F	M	A	M	J	J	A	S	O	N	D	J	F	M	A	M	J	J	A	S
Exportações / Exports	2.4	2.4	2.0	2.2	2.4	2.5	2.2	2.4	2.5	2.5	1.8	2.2	2.4	2.3	1.9	2.4	2.3	2.4	2.4	2.5	2.4	2.6	1.8	2.3
Importações / Imports	3.3	3.3	3.1	2.9	3.1	3.3	2.9	3.1	3.0	3.1	2.6	3.0	3.4	3.2	2.8	2.9	2.8	3.0	3.1	3.2	3.1	3.4	2.6	3.2
Saldo / Balance	-0.9	-0.8	-1.1	-0.7	-0.8	-0.8	-0.7	-0.7	-0.6	-0.6	-0.8	-0.8	-1.1	-0.8	-1.0	-0.5	-0.6	-0.6	-0.7	-0.7	-0.7	-0.8	-0.8	-0.9

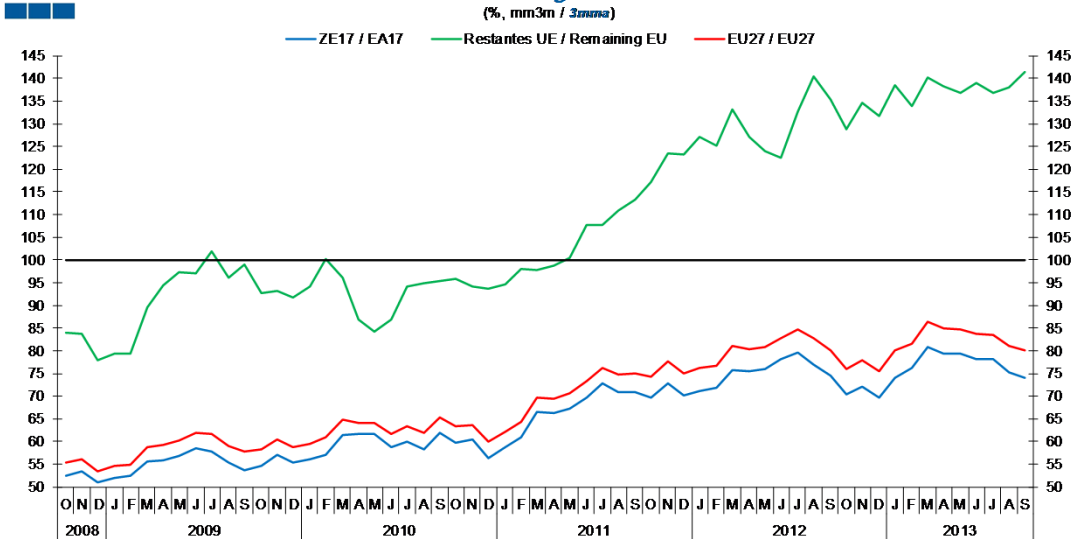
3. Intracomunitário / Intra-Community

Gráfico / Graph 3.1.
 Importações e Exportações
 Imports and Exports



	2011			2012					2013					2013										
	O	N	D	J	F	M	A	M	J	J	A	S	O	N	D	J	F	M	A	M	J	J	A	S
Exportações / Exports	12.6	11.7	7.5	5.0	3.3	4.7	2.3	0.5	1.8	2.3	3.4	-1.9	-1.9	-2.9	-1.4	0.3	-0.1	-1.5	0.4	2.6	3.5	2.4	2.0	6.0
Importações / Imports	-4.0	-8.5	-14.3	-14.6	-13.2	-10.1	-11.8	-12.4	-9.9	-8.0	-6.7	-8.1	-4.3	-3.2	-1.8	-4.3	-6.1	-7.6	-4.9	-2.0	2.3	4.0	4.3	6.1

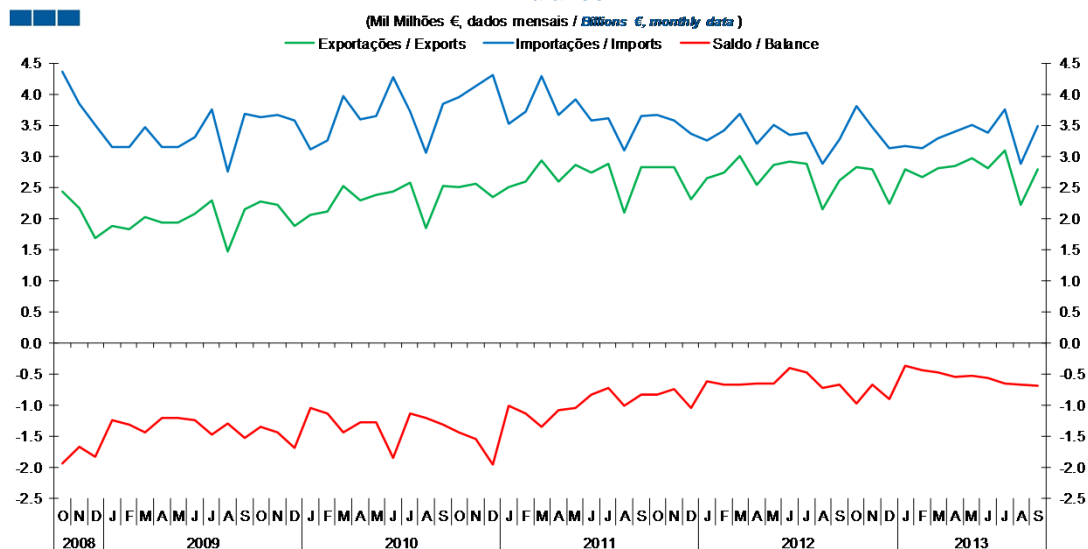
Gráfico / Graph 3.2.
 Taxa de Cobertura
 Coverage Rate



	2011			2012					2013					2013										
	O	N	D	J	F	M	A	M	J	J	A	S	O	N	D	J	F	M	A	M	J	J	A	S
ZE 17 / EA 17	69.6	72.9	70.2	71.2	71.8	75.6	75.5	76	78.2	79.6	77	74.6	70.5	72.1	69.6	74.1	76.3	80.9	79.4	79.3	78.2	78	75.3	74
UE 27 / EU 27	74.2	77.7	75.1	76.3	76.7	81	80.5	80.8	82.8	84.7	82.9	80.1	76	78	75.4	80	81.6	86.4	84.9	84.7	83.8	83.4	81.0	80.0
Restantes UE / Remaining EU	117.1	123.5	123.3	127.1	125.2	133.2	127.1	123.9	122.5	132.8	140.4	135.3	128.9	134.7	131.8	138.6	133.9	140.1	138.3	136.9	138.9	136.7	137.9	141.5

3. Intracomunitário / Intra-Community

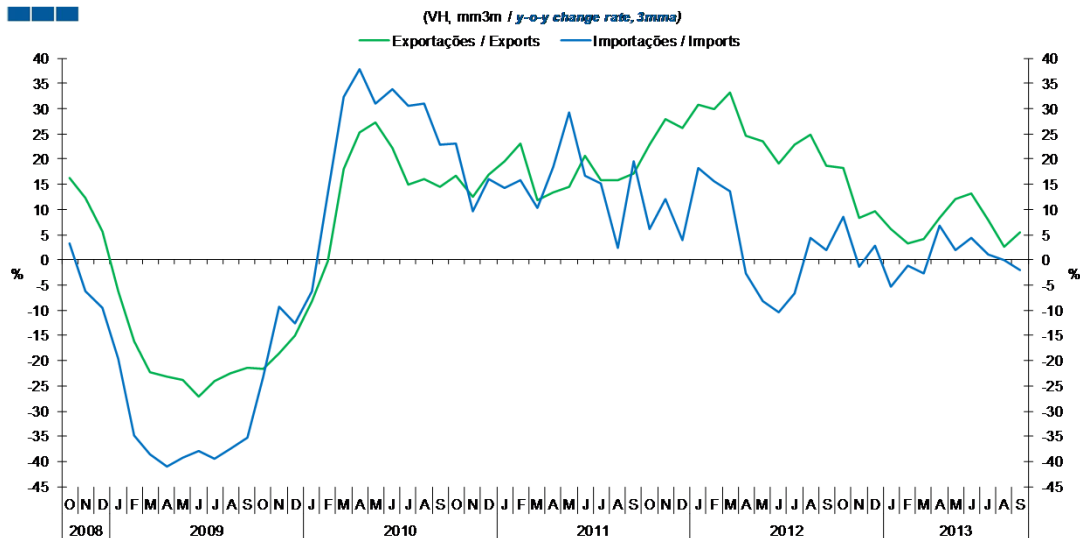
Gráfico / Graph 3.3.
 Saldo
 Balance



	2011			2012												2013								
	O	N	D	J	F	M	A	M	J	J	A	S	O	N	D	J	F	M	A	M	J	J	A	S
Exportações / Exports	2.8	2.8	2.3	2.6	2.7	3.0	2.5	2.9	2.9	2.9	2.1	2.6	2.8	2.8	2.2	2.8	2.7	2.8	2.8	3.0	2.8	3.1	2.2	2.8
Importações / Imports	3.7	3.6	3.4	3.3	3.4	3.7	3.2	3.5	3.3	3.4	2.9	3.3	3.8	3.5	3.1	3.2	3.1	3.3	3.4	3.5	3.4	3.7	2.9	3.5
Saldo / Balance	-0.8	-0.7	-1.0	-0.6	-0.7	-0.7	-0.7	-0.7	-0.4	-0.5	-0.7	-0.7	-1.0	-0.7	-0.9	-0.4	-0.5	-0.5	-0.6	-0.5	-0.6	-0.7	-0.7	-0.7

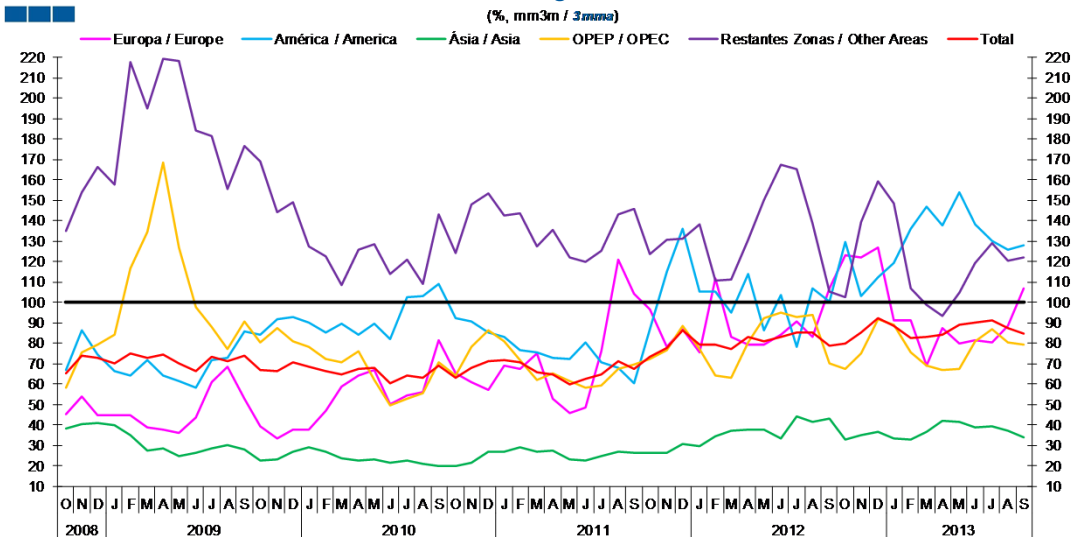
4. Extracomunitário / Extra-Community

Gráfico / Graph 4.1.
 Importações e Exportações
 Imports and Exports



	2011			2012			2013																	
	O	N	D	J	F	M	A	M	J	J	A	S	O	N	D	J	F	M	A	M	J	J	A	S
Exportações / Exports	22.8	27.9	26.2	30.8	29.8	33.2	24.7	23.5	19.1	22.8	24.9	18.7	18.2	8.3	9.7	6.2	3.3	4.2	8.3	12.1	13.1	8.0	2.6	5.4
Importações / Imports	6.2	12.0	4.0	18.3	15.6	13.6	-2.6	-8.1	-10.3	-6.7	4.4	2.0	8.6	-1.3	2.8	-5.3	-1.2	-2.7	6.8	1.9	4.3	1.1	0.1	-1.9

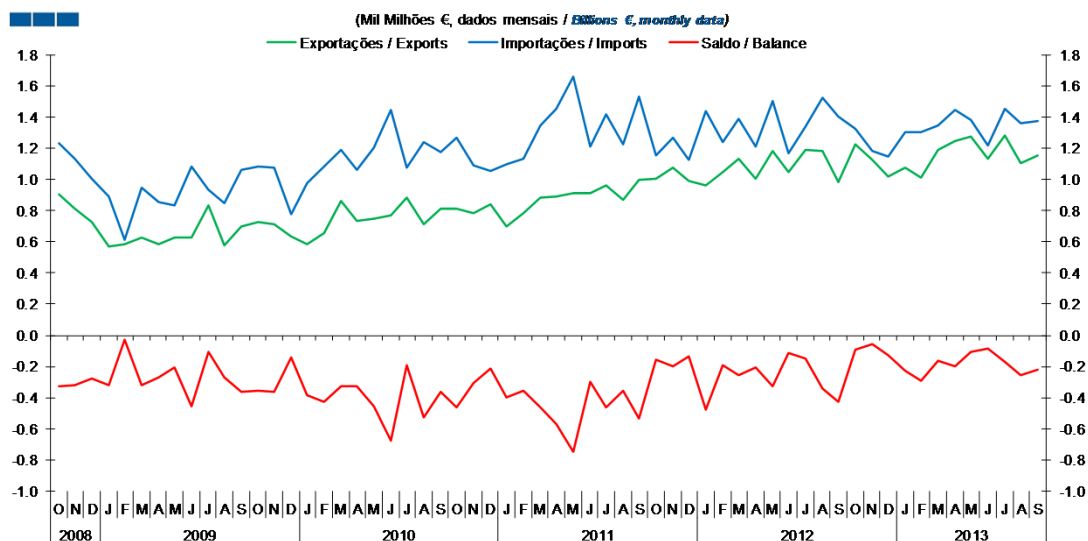
Gráfico / Graph 4.2.
 Taxa de Cobertura
 Coverage Rate



	2011			2012			2013																	
	O	N	D	J	F	M	A	M	J	J	A	S	O	N	D	J	F	M	A	M	J	J	A	S
Europa / Europe	96.6	78.4	86.6	75.8	112.0	83.1	79.3	79.5	84.2	90.7	83.1	106.8	123.1	122.0	126.6	91.4	91.1	69.2	87.5	79.7	81.3	80.5	88.3	106.7
América / America	87.1	114.7	136.2	105.0	105.5	95.2	114.0	86.3	103.5	78.3	106.9	100.6	129.4	103.0	112.0	119.5	135.9	146.6	137.8	153.9	138.0	130.0	125.5	127.9
Ásia / Asia	26.5	26.2	30.5	29.7	34.4	37.4	38.0	38.0	33.5	44.0	41.5	43.4	33.1	35.2	36.5	33.4	33.1	36.9	42.0	41.3	38.6	39.3	37.0	33.8
OPEP / OPEC	72.3	76.9	88.6	77.2	64.1	63.1	80.3	92.3	94.9	92.9	94.1	70.1	67.7	74.7	91.9	89.1	75.3	69.0	67.0	67.6	81.2	86.8	80.4	79.4
Restantes Zonas / Other Areas	123.8	130.6	131.2	138.0	110.6	111.2	130.8	150.1	167.4	165.2	138.9	105.4	102.4	139.4	159.1	148.7	106.9	98.7	93.3	104.9	119.1	129.2	120.1	121.8
Total	73.3	77.7	86.5	79.1	79.1	77.4	83.0	80.8	83.3	85.3	85.1	78.7	79.8	85.3	92.3	88.7	82.8	82.9	84.2	88.9	90.4	91.1	87.3	84.6

4. Extracomunitário / Extra-Community

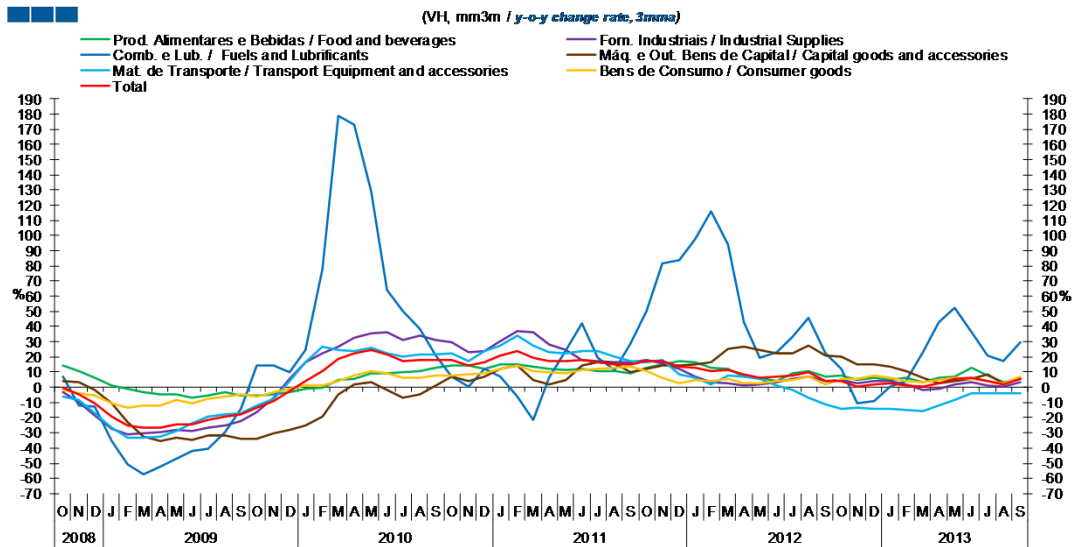
Gráfico / Graph 4.3.
 Saldo
 Balance



	2011			2012			2013					2013												
	O	N	D	J	F	M	A	M	J	J	A	S	O	N	D	J	F	M	A	M	J	J	A	S
Exportações / Exports	1.0	1.1	1.0	1.0	1.0	1.1	1.0	1.2	1.0	1.2	1.2	1.0	1.2	1.1	1.0	1.1	1.0	1.2	1.2	1.3	1.1	1.3	1.1	1.2
Importações / Imports	1.2	1.3	1.1	1.4	1.2	1.4	1.2	1.5	1.2	1.3	1.5	1.4	1.3	1.2	1.1	1.3	1.3	1.3	1.4	1.4	1.2	1.4	1.4	1.4
Saldo / Balance	-0.2	-0.2	-0.1	-0.5	-0.2	-0.3	-0.2	-0.3	-0.1	-0.1	-0.3	-0.4	-0.1	-0.1	-0.1	-0.2	-0.3	-0.2	-0.2	-0.1	-0.1	-0.2	-0.3	-0.2

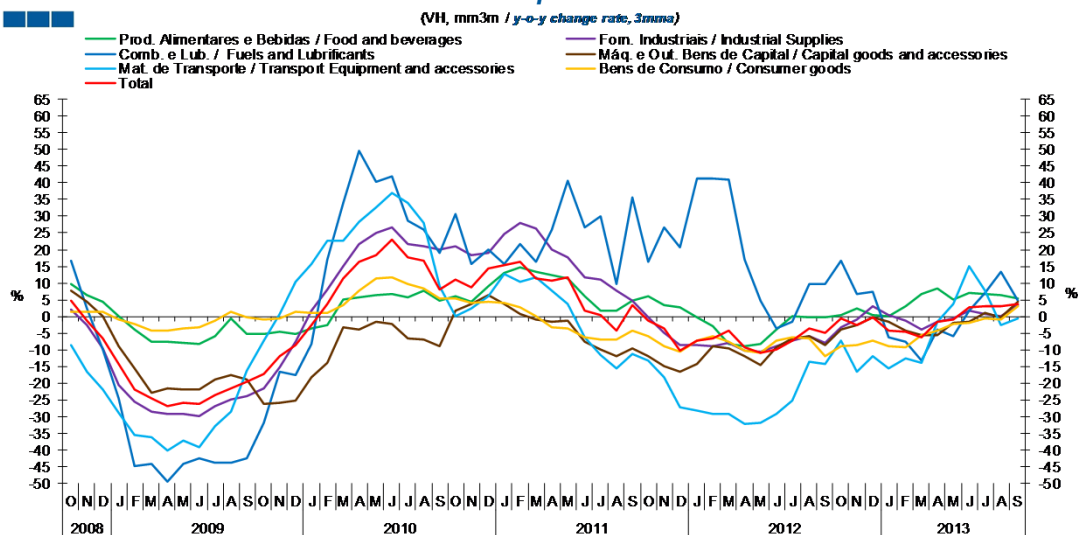
5. Grandes Categorias Económicas / Broad Economic Categories

Gráfico / Graph 5.1.
Exportações
Exports



	2011			2012			2013																	
	O	N	D	J	F	M	A	M	J	J	A	S	O	N	D	J	F	M	A	M	J	J	A	S
Produtos Alimentares e Bebidas / Food and Beverages	13.0	14.8	17.5	16.8	13.0	12.3	6.9	6.4	4.2	9.0	10.6	7.1	7.6	4.6	5.9	4.8	6.2	3.5	6.4	7.3	12.8	8.0	3.2	5.3
Comb. e Lub. / Fuels and Lubricants	50.1	81.9	83.5	97.5	115.8	94.0	42.7	19.3	23.2	33.2	45.6	22.4	12.2	-10.5	-8.8	0.8	4.3	23.0	42.6	52.1	36.3	20.7	17.5	29.7
Mat. de Transporte / Transport equipment and accessories	16.7	18.2	8.7	6.4	1.9	7.8	6.8	5.2	0.9	-1.5	-7.1	-11.6	-14.3	-13.7	-14.4	-13.9	-14.9	-15.9	-12.3	-8.4	-3.7	-3.8	-4.2	-3.7
Forn. Industriais / Industrial Supplies	18.2	16.0	12.0	7.2	3.3	2.7	1.5	1.7	3.6	5.3	6.7	3.8	4.7	2.4	4.3	4.3	1.9	-1.4	-1.0	1.6	3.3	1.3	0.2	3.3
Máq. e Out. Bens de Capital / Capital Goods and Accessories	12.1	14.3	14.2	14.9	16.6	25.4	26.8	24.4	22.3	22.6	27.7	21.1	20.3	15.1	15.3	13.3	10.5	6.5	2.8	4.0	5.4	8.2	2.7	5.8
Bens de Consumo / Consumer Goods	10.6	6.0	2.8	4.5	4.2	5.8	2.5	2.8	4.1	4.5	6.7	1.6	5.6	5.3	8.0	6.3	4.1	3.2	5.1	6.6	5.4	3.9	2.3	7.1
Total	16.9	17.2	13.9	12.6	10.7	11.7	8.2	6.6	6.6	7.9	9.6	4.2	4.1	0.6	2.2	2.3	1.0	0.1	2.6	5.3	6.2	4.0	2.2	5.8

Gráfico / Graph 5.2.
Importações
Imports



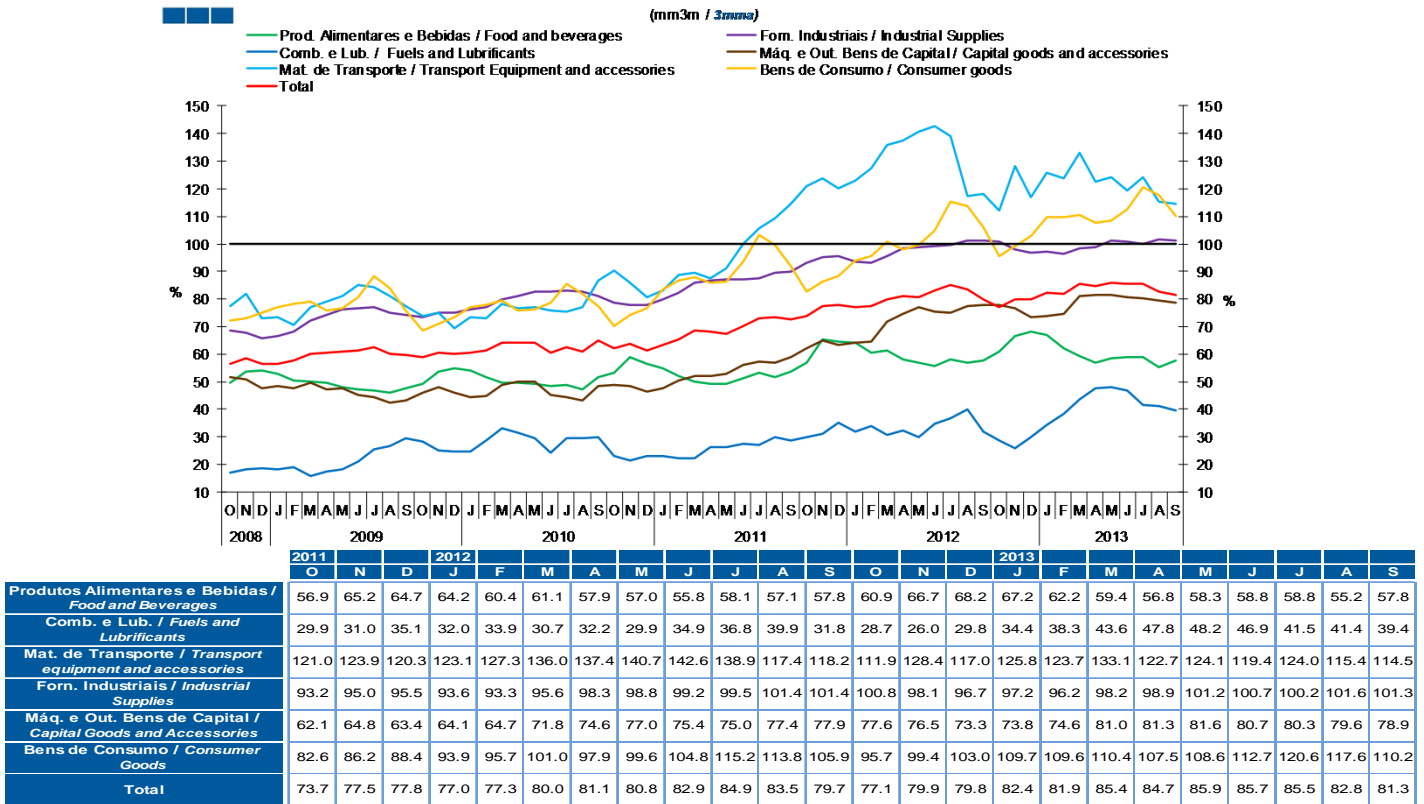
	2011			2012			2013																	
	O	N	D	J	F	M	A	M	J	J	A	S	O	N	D	J	F	M	A	M	J	J	A	S
Produtos Alimentares e Bebidas / Food and Beverages	6.0	3.5	2.7	-0.2	-2.9	-8.4	-9.0	-8.1	-4.1	0.0	-0.2	-0.3	0.6	2.3	0.4	0.2	3.1	6.6	8.5	4.9	7.0	6.7	6.5	5.3
Comb. e Lub. / Fuels and Lubricants	16.3	26.6	20.8	41.2	41.4	41.0	17.0	4.8	-3.5	-1.5	9.7	9.9	16.6	6.6	7.4	-6.3	-7.5	-13.3	-3.8	-5.8	1.6	7.0	13.4	4.6
Mat. de Transporte / Transport equipment and accessories	-13.1	-18.2	-27.1	-28.1	-29.1	-29.0	-32.0	-31.9	-29.3	-25.1	-13.4	-14.3	-7.3	-16.7	-12.0	-15.7	-12.5	-14.0	-1.7	3.8	15.0	7.8	-2.5	-0.5
Forn. Industriais / Industrial Supplies	-0.2	-4.9	-8.6	-8.6	-8.8	-7.9	-10.4	-10.4	-8.9	-7.3	-5.9	-7.7	-3.3	-0.8	3.1	0.5	-1.1	-4.0	-1.6	-0.7	1.8	0.6	0.0	3.4
Máq. e Out. Bens de Capital / Capital Goods and Accessories	-12.0	-14.9	-16.6	-14.4	-8.9	-9.4	-11.8	-14.5	-9.3	-6.5	-6.0	-8.7	-3.8	-2.5	-0.3	-1.5	-4.1	-5.5	-5.6	-1.9	-1.6	1.0	-0.2	4.5
Bens de Consumo / Consumer Goods	-5.8	-8.9	-10.7	-7.2	-5.8	-7.7	-10.1	-10.7	-7.2	-6.2	-6.6	-11.8	-8.8	-8.7	-7.4	-9.0	-9.1	-5.7	-4.3	-2.3	-2.0	-0.7	-1.0	3.0
Total	-1.2	-3.6	-10.2	-7.3	-6.5	-4.3	-9.2	-11.0	-9.8	-7.4	-3.5	-5.0	-0.5	-2.4	-0.4	-4.4	-4.7	-6.2	-1.7	-0.9	2.8	3.2	3.1	3.6

Nota: Não inclui Bens N.E. Outra Categoria devido ao seu reduzido valor relativo e elevada variabilidade.

Note: Does not include Goods Not Elsewhere Specified because of its small relative value and high variability

5. Grandes Categorias Económicas / Broad Economic Categories

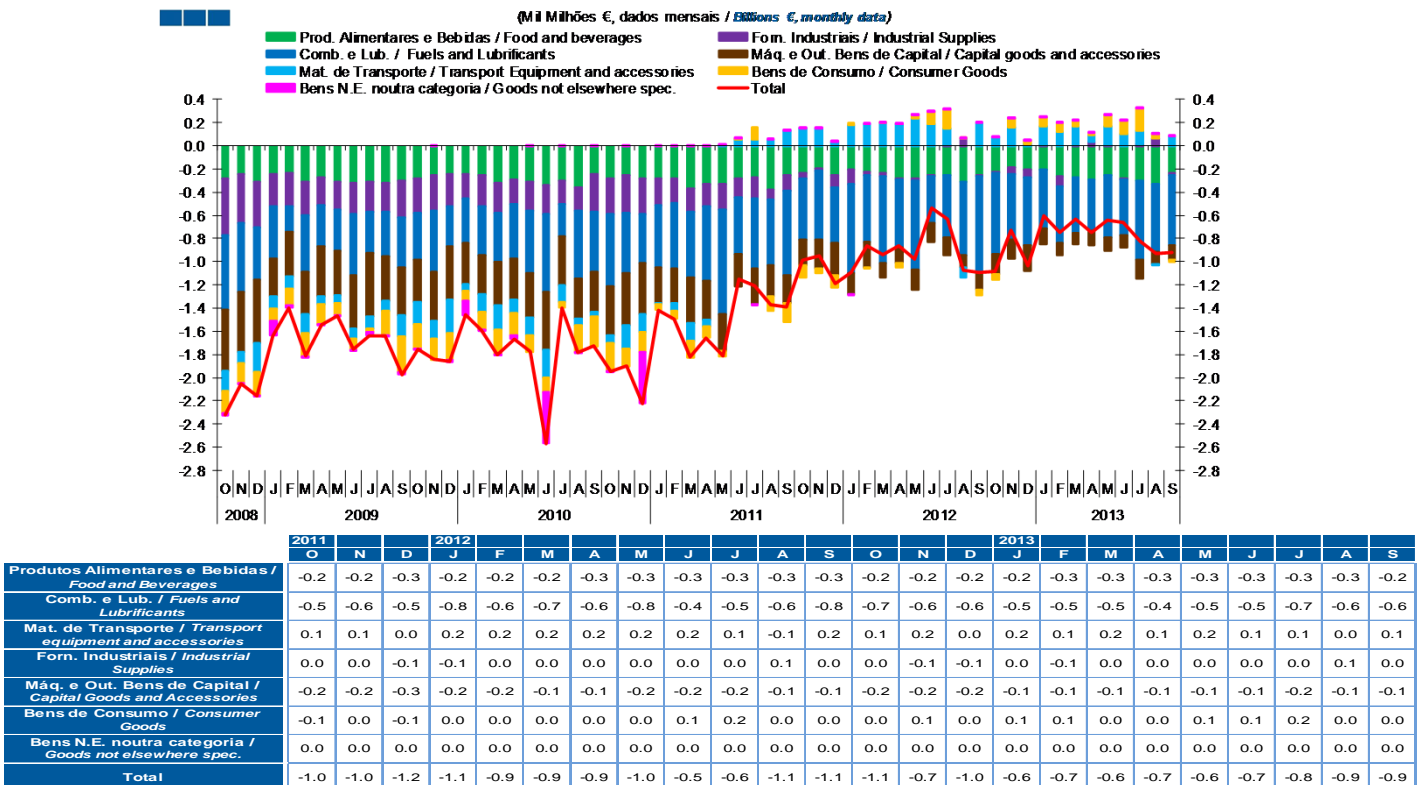
Gráfico / Graph 5.3.
Taxa de Cobertura
Coverage Rate



Nota: Não inclui Bens N.E. Outra Categoria devido ao seu reduzido valor relativo e elevada variabilidade.

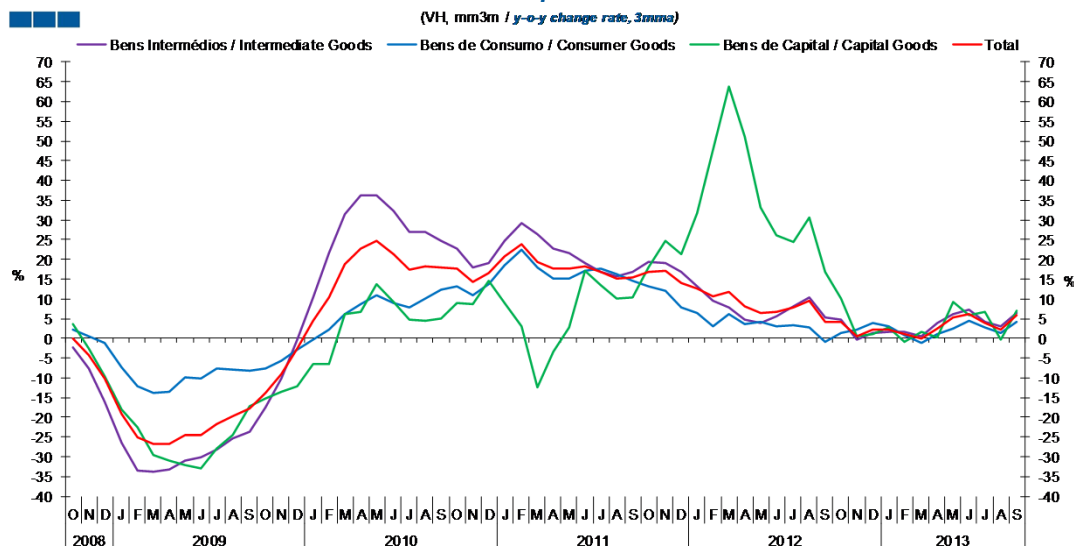
Note: Does not include Goods Not Elsewhere Specified because of its small relative value and high variability

Gráfico / Graph 5.4.
Saldo
Balance



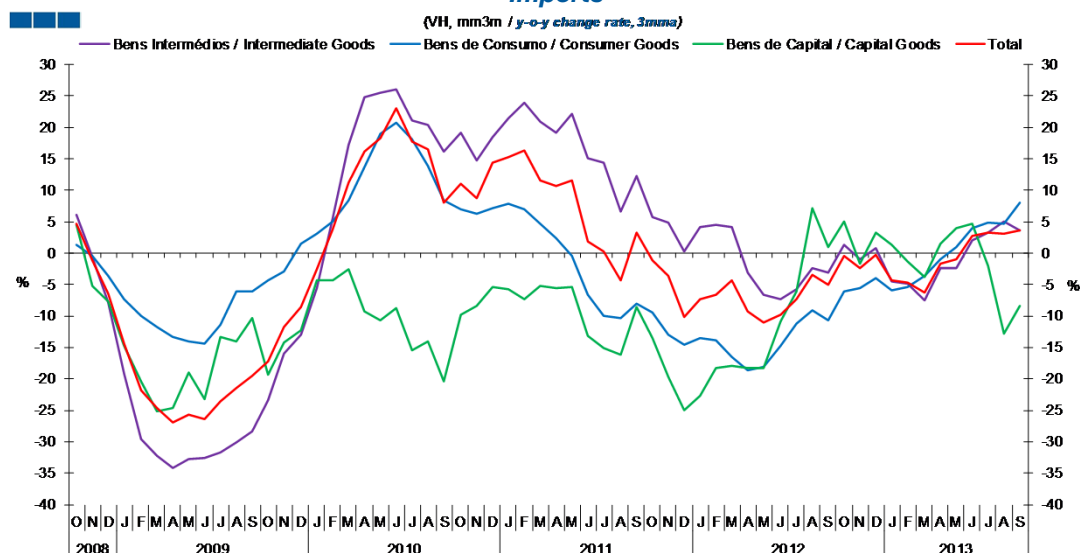
6. Classes Básicas de Bens do Sistema Europeu de Contas Nacionais / Basic Classes of Goods in the European System of Accounts

Gráfico / Graph 6.1.
Exportações
Exports



	2011			2012			2013																	
	O	N	D	J	F	M	A	M	J	J	A	S	O	N	D	J	F	M	A	M	J	J	A	S
Bens Intermediários / Intermediate Goods	19.3	19.2	16.7	13.2	9.7	7.9	4.7	3.9	5.5	8.0	10.5	5.4	4.6	-0.4	1.3	1.7	1.5	0.5	3.8	6.1	7.2	4.1	3.1	6.5
Bens de Consumo / Consumer Goods	13.2	12.2	7.7	6.4	3.1	6.2	3.7	4.1	3.1	3.3	2.8	-1.0	1.4	2.3	3.9	3.0	0.8	-1.2	1.1	2.4	4.6	2.9	1.3	4.1
Bens de Capital / Capital Goods	18.0	24.6	21.2	31.7	47.6	63.9	51.0	33.1	26.0	24.4	30.7	16.9	10.1	0.5	1.1	2.8	-0.8	1.5	0.4	9.3	5.8	6.7	-0.2	6.9
Total	16.9	17.2	13.9	12.6	10.7	11.7	8.2	6.6	6.6	7.9	9.6	4.2	4.1	0.6	2.2	2.3	1.0	0.1	2.6	5.3	6.2	4.0	2.2	5.8

Gráfico / Graph 6.2.
Importações
Imports



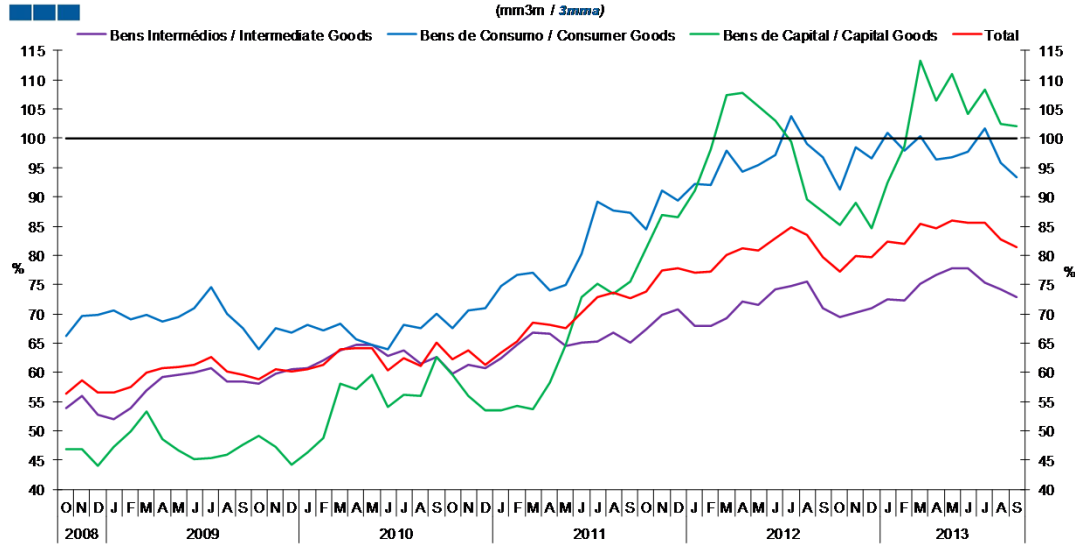
	2011			2012			2013																	
	O	N	D	J	F	M	A	M	J	J	A	S	O	N	D	J	F	M	A	M	J	J	A	S
Bens Intermediários / Intermediate Goods	5.8	4.8	0.2	4.1	4.5	4.2	-3.1	-6.6	-7.4	-5.8	-2.4	-3.2	1.4	-1.1	0.8	-4.6	-4.8	-7.5	-2.5	-2.4	2.1	3.3	5.0	3.5
Bens de Consumo / Consumer Goods	-9.4	-13.0	-14.6	-13.6	-13.9	-16.5	-18.7	-18.2	-14.8	-11.2	-9.1	-10.7	-6.1	-5.5	-3.9	-5.9	-5.5	-3.7	-1.0	1.0	4.1	4.9	4.7	8.1
Bens de Capital / Capital Goods	-13.5	-19.7	-25.0	-22.7	-18.4	-18.0	-18.3	-18.3	-10.9	-6.1	7.2	1.0	5.0	-1.7	3.3	1.3	-1.4	-3.8	1.6	3.9	4.7	-2.0	-12.8	-8.4
Total	-1.2	-3.6	-10.2	-7.3	-6.5	-4.3	-9.2	-11.0	-9.8	-7.4	-3.5	-5.0	-0.5	-2.4	-0.4	-4.4	-4.7	-6.2	-1.7	-0.9	2.8	3.2	3.1	3.6

Nota: Não inclui a série Outros Bens devido ao seu baixo valor relativo e elevada variabilidade.

Note: Does not include Other Goods because of its small relative value and high variability.

6. Classes Básicas de Bens do Sistema Europeu de Contas Nacionais / Basic Classes of Goods in the European System of Accounts

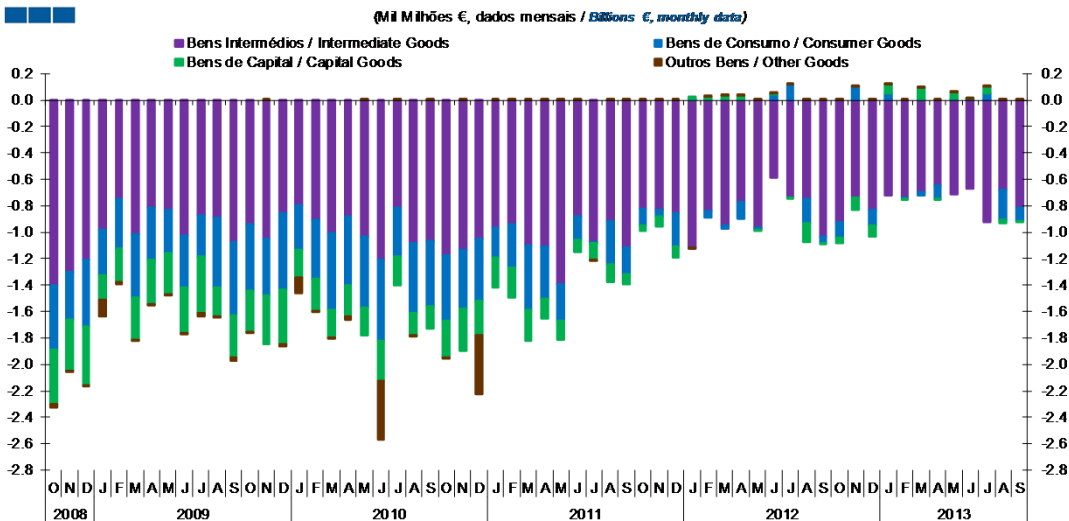
Gráfico / Graph 6.3.
Taxa de Cobertura
Coverage Rate



	2011			2012			2013																	
	O	N	D	J	F	M	A	M	J	J	A	S	O	N	D	J	F	M	A	M	J	J	A	S
Bens Intermediários / Intermediate Goods	67.3	69.7	70.7	67.9	67.8	69.2	72.0	71.6	74.1	74.8	75.5	70.9	69.5	70.2	71.0	72.4	72.4	75.2	76.7	77.8	77.8	75.4	74.2	72.9
Bens de Consumo / Consumer Goods	84.4	91.0	89.4	92.1	91.9	97.9	94.4	95.4	97.2	103.7	99.0	96.8	91.2	98.5	96.7	100.9	98.0	100.4	96.3	96.8	97.7	101.7	95.9	93.3
Bens de Capital / Capital Goods	81.3	87.0	86.4	91.0	98.1	107.4	107.7	105.5	103.1	99.5	89.6	87.4	85.2	88.9	84.6	92.4	98.7	113.3	106.5	110.9	104.1	108.3	102.5	102.0
Total	73.7	77.5	77.8	77.0	77.3	80.0	81.1	80.8	82.9	84.9	83.5	79.7	77.1	79.9	79.8	82.4	81.9	85.4	84.7	85.9	85.7	85.5	82.8	81.3

Nota: Não inclui a série Outros Bens devido ao seu baixo valor relativo e elevada variabilidade.
Note: Does not include Other Goods because of its small relative value and high variability.

Gráfico / Graph 6.4.
Saldo de Bens
Balance of Goods



	2011			2012			2013																	
	O	N	D	J	F	M	A	M	J	J	A	S	O	N	D	J	F	M	A	M	J	J	A	S
Bens Intermediários / Intermediate Goods	-0.8	-0.8	-0.9	-1.1	-0.8	-0.9	-0.8	-1.0	-0.6	-0.7	-0.7	-1.0	-0.9	-0.7	-0.8	-0.7	-0.7	-0.7	-0.6	-0.7	-0.7	-0.9	-0.7	-0.8
Bens de Consumo / Consumer Goods	-0.1	-0.1	-0.3	0.0	-0.1	0.0	-0.1	0.0	0.0	0.1	-0.2	0.0	-0.1	0.1	-0.1	0.1	0.0	0.0	-0.1	0.0	0.0	0.1	-0.2	-0.1
Bens de Capital / Capital Goods	0.0	-0.1	-0.1	0.0	0.0	0.0	0.0	0.0	0.0	0.0	-0.1	0.0	0.0	-0.1	-0.1	0.1	0.0	0.1	0.0	0.1	0.0	0.0	0.0	0.0
Outros Bens / Other Goods	0.0	0.0	0.0	0.0	0.0	0.0	0.0	0.0	0.0	0.0	0.0	0.0	0.0	0.0	0.0	0.0	0.0	0.0	0.0	0.0	0.0	0.0	0.0	0.0
Total	-1.0	-1.0	-1.2	-1.1	-0.9	-0.9	-0.9	-1.0	-0.5	-0.6	-1.1	-1.1	-1.1	-0.7	-1.0	-0.6	-0.7	-0.6	-0.7	-0.6	-0.7	-0.8	-0.9	-0.9

6. Classes Básicas de Bens do Sistema Europeu de Contas Nacionais / Basic Classes of Goods in the European System of Accounts

Tabela / Table 1.1.
Estrutura do Saldo
Balance Structure

Milhões de euros \ Millions of euros

		2012		N		D		2013		J		F		M		A		M		J		J		A		S														
		O	N	D	J	F	M	A	M	J	J	A	S	O	N	D	J	F	M	A	M	J	J	A	S	O	N	D	J	F	M	A	M	J	J	A	S			
		M€	%	M€	%	M€	%	M€	%	M€	%	M€	%	M€	%	M€	%	M€	%	M€	%	M€	%	M€	%	M€	%	M€	%	M€	%	M€	%	M€	%	M€	%			
Bens Intermedios / Intermediate Goods	Prod. alim. e bebidas / <i>Foods and beverages</i>	-171	16	-139	19	-124	12	-131	22	-147	20	-163	26	-146	19	-104	16	-146	22	-154	19	-140	15	-137	15															
	Forn. industriais NE noutra categoria / <i>Industrial supplies NE specified</i>	-18	2	-50	7	-65	6	7	-1	-87	12	9	-1	34	-5	6	-1	-12	2	14	-2	60	-6	-24	3															
	Comb. e lubrificantes / <i>Fuel and lubricants</i>	-719	67	-541	74	-625	60	-597	100	-543	73	-581	92	-533	71	-603	94	-511	77	-742	90	-628	68	-650	71															
	Máquinas, outros bens de capital (Partes e acessórios) / <i>Capital goods and parts and accessories</i>	-62	6	-52	7	-59	6	-55	9	-48	6	-32	5	-65	9	-66	10	-36	5	-64	8	-38	4	-54	6															
	Material de transportes (Partes e acessórios) / <i>Transport equipment (Parts and accessories)</i>	44	-4	42	-6	41	-4	53	-9	87	-12	73	-12	66	-9	58	-9	33	-5	20	-2	64	-7	55	-6															
Total		-926	86	-740	102	-832	80	-724	121	-738	99	-693	109	-644	86	-709	110	-672	102	-925	113	-683	74	-811	88															
Bens de Consumo / Consumption Goods	Prod. alim. e bebidas destinados ao consumo dos particulares / <i>Food and beverages mainly for household consumption</i>	-50	5	-51	7	-83	8	-74	12	-113	15	-113	18	-142	19	-147	23	-133	20	-151	18	-196	21	-95	10															
	Material de transporte / <i>Transport equipment</i>	-16	1	68	-9	-61	6	48	-8	30	-4	35	-6	21	-3	57	-9	22	-3	22	-3	-72	8	6	-1															
	Bens de consumo NE noutra categoria / <i>Consumption goods NE specified</i>	-47	4	82	-11	25	-2	78	-13	77	-10	47	-7	21	-3	96	-15	117	-18	185	-23	41	-4	-17	2															
Total		-113	10	99	-14	-119	12	52	-9	-6	1	-31	5	-100	13	6	-1	6	-1	56	-7	-226	24	-106	12															
Bens de Capital / Capital Goods	Carburantes para motor / <i>Motor spirit</i>	22	-2	-32	4	40	-4	89	-15	55	-7	100	-16	87	-12	68	-11	36	-5	64	-8	47	-5	48	-5															
	Máquinas, outros bens de capital (exceto material de transporte) / <i>Capital goods (except transport equipment)</i>	-107	10	-103	14	-160	16	-81	14	-63	8	-59	9	-63	8	-56	9	-75	11	-94	12	-70	8	-74	8															
	Material de transportes destinado à indústria / <i>Transport equipment, industrial</i>	40	-4	46	-6	36	-4	62	-10	5	-1	49	-8	-31	4	46	-7	42	-6	77	-9	3	0	23	-3															
Total		-46	4	-90	12	-84	8	70	-12	-3	0	90	-14	-6	1	58	-9	3	0	47	-6	-19	2	-3	0															
Outros / Others		5	0	3	0	1	0	1	0	2	0	1	0	3	0	2	0	1	0	2	0	2	0	3	0															
Total		-1,079	100	-728	100	-1,034	100	-600	100	-745	100	-634	100	-747	100	-643	100	-662	100	-821	100	-926	100	-916	100															

7. Índice GEE de Comércio Internacional de Bens / *GEE Index of International Trade of Goods*

Gráfico / Graph 7.1.
 Total

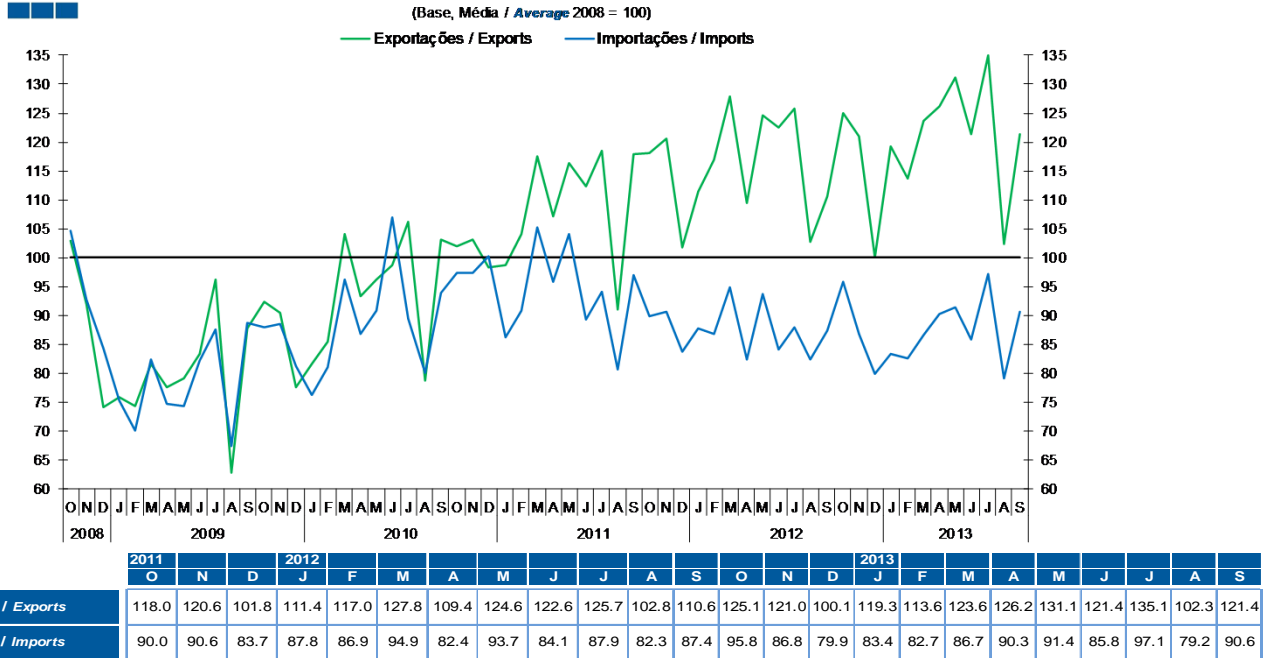
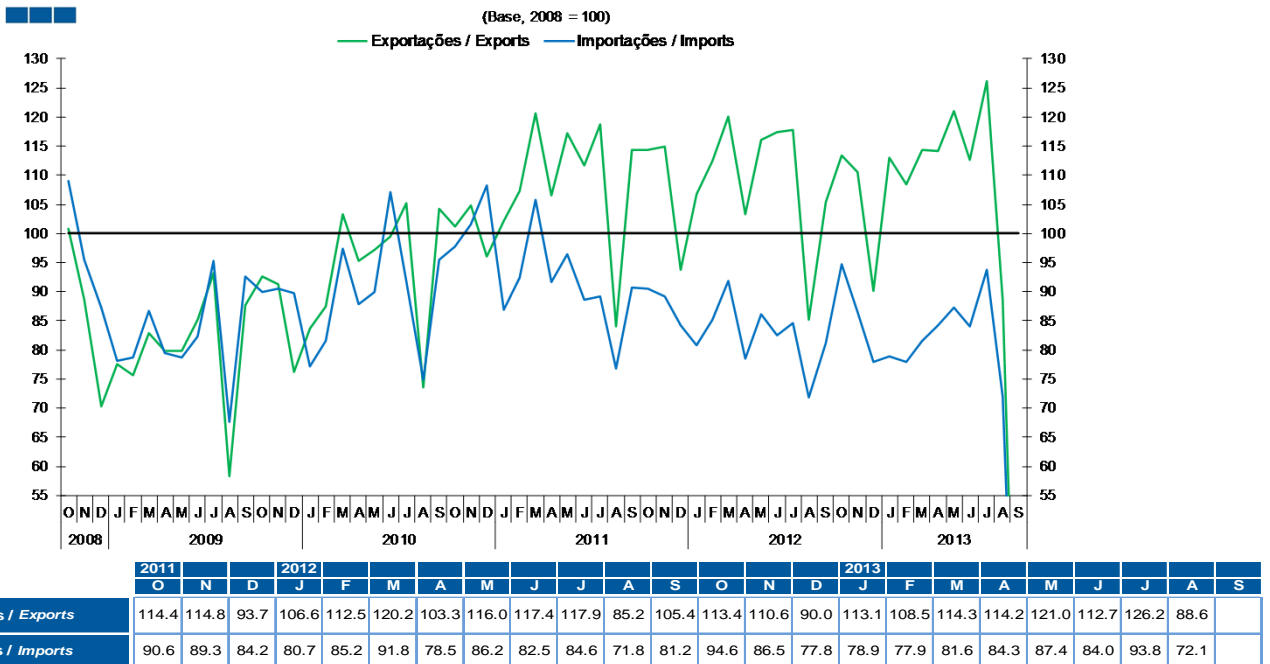


Gráfico / Graph 7.2.
 Zona Euro
 Euro Area



7. Índice GEE de Comércio Internacional de Bens / *GEE Index of International Trade of Goods*

Gráfico / Graph 7.3.
Intracomunitário
Intra-Community

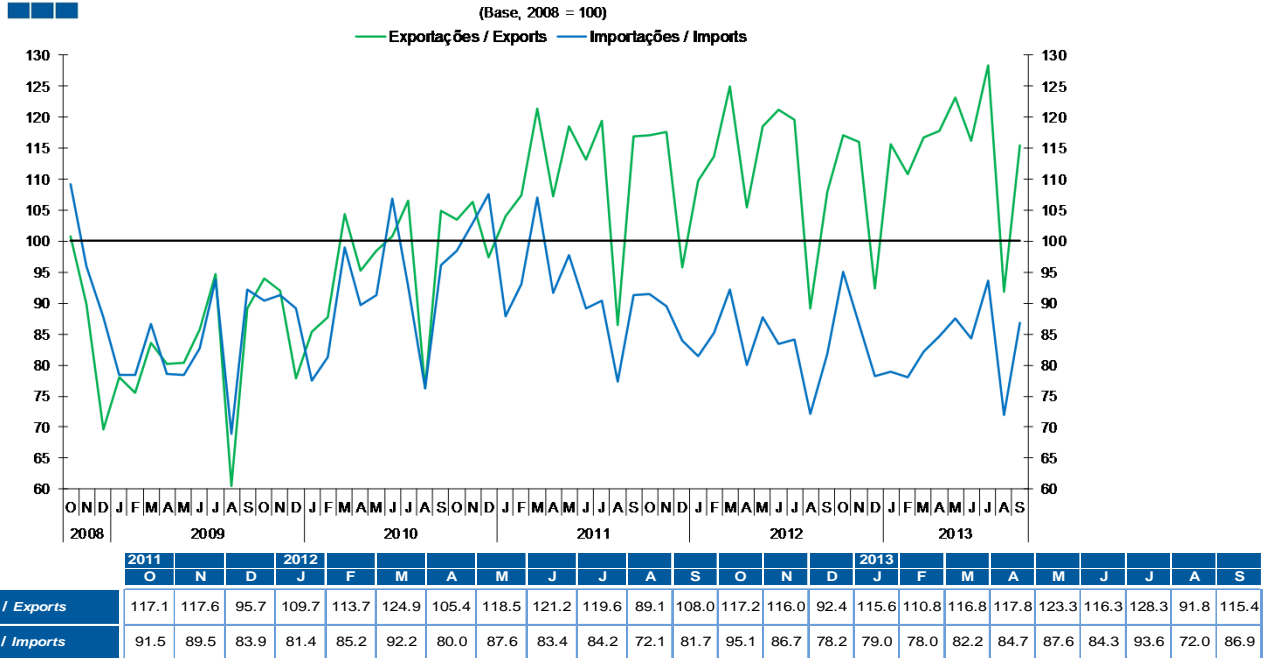


Gráfico / Graph 7.4.
Extracomunitário
Extra-Community

