

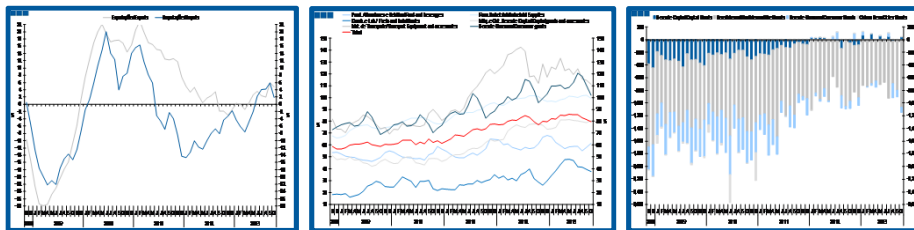
Estatísticas Temáticas de Conjuntura

Short-term Thematic Statistics

- Nº 12/2013 -

10 de dezembro de 2013

December, 10, 2013



Comércio Internacional de Bens

International Trade of Goods

- Outubro de 2013 -

- October, 2013 -

Fonte: Instituto Nacional de Estatística

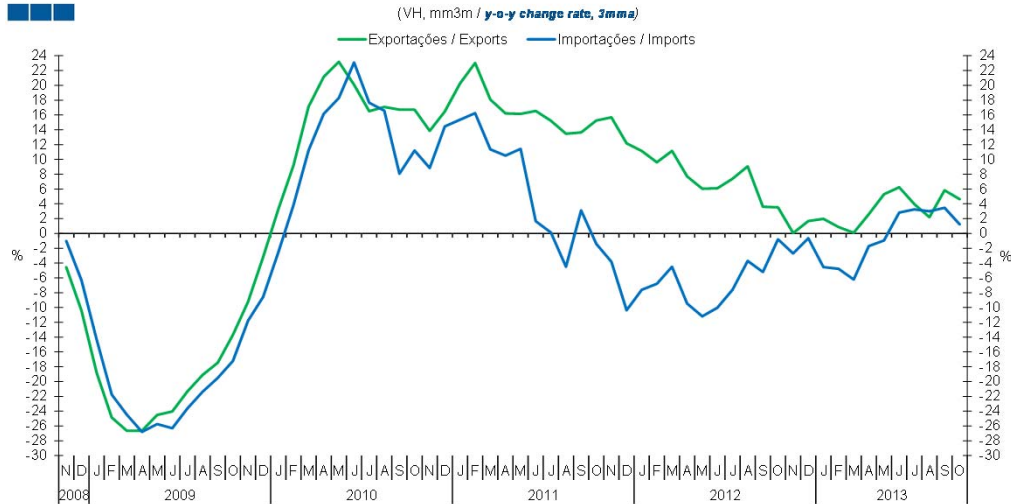
Source: Statistics Portugal

Índice / Index

	Página / Page
1. Total	
Importações e Exportações / <i>Imports and Exports</i>	3
Taxa de Cobertura / <i>Coverage Rate</i>	3
Saldo / <i>Balance</i>	4
2. Zona Euro-17 / <i>Euro Area-17</i>	
Importações e Exportações / <i>Imports and Exports</i>	5
Taxa de Cobertura / <i>Coverage Rate</i>	5
Saldo / <i>Balance</i>	6
3. Intracomunitário / <i>Intra-Community</i>	
Importações e Exportações / <i>Imports and Exports</i>	7
Taxa de Cobertura / <i>Coverage Rate</i>	7
Saldo / <i>Balance</i>	8
4. Extracomunitário / <i>Extra-Community</i>	
Importações e Exportações / <i>Imports and Exports</i>	9
Taxa de Cobertura / <i>Coverage Rate</i>	9
Saldo / <i>Balance</i>	10
5. Grandes Categorias Económicas / <i>Broad Economic Categories</i>	
Exportações / <i>Exports</i>	11
Importações / <i>Imports</i>	11
Taxa de Cobertura / <i>Coverage Rate</i>	12
Saldo / <i>Balance</i>	12
6. Classes Básicas de Bens do Sistema Europeu de Contas Nacionais / <i>Basic Classes of Goods in the European System of Accounts</i>	
Exportações / <i>Exports</i>	13
Importações / <i>Imports</i>	13
Taxa de Cobertura / <i>Coverage Rate</i>	14
Saldo / <i>Balance</i>	14
Estrutura do Saldo / <i>Balance Structure</i>	15
7. Índice GEE de Comércio Internacional de Bens / <i>GEE Index of International Trade of Goods</i>	
Total / <i>Total</i>	16
Zona Euro / <i>Euro Area</i>	16
Intracomunitário / <i>Intra-Community</i>	17
Extracomunitário / <i>Extra-Community</i>	17

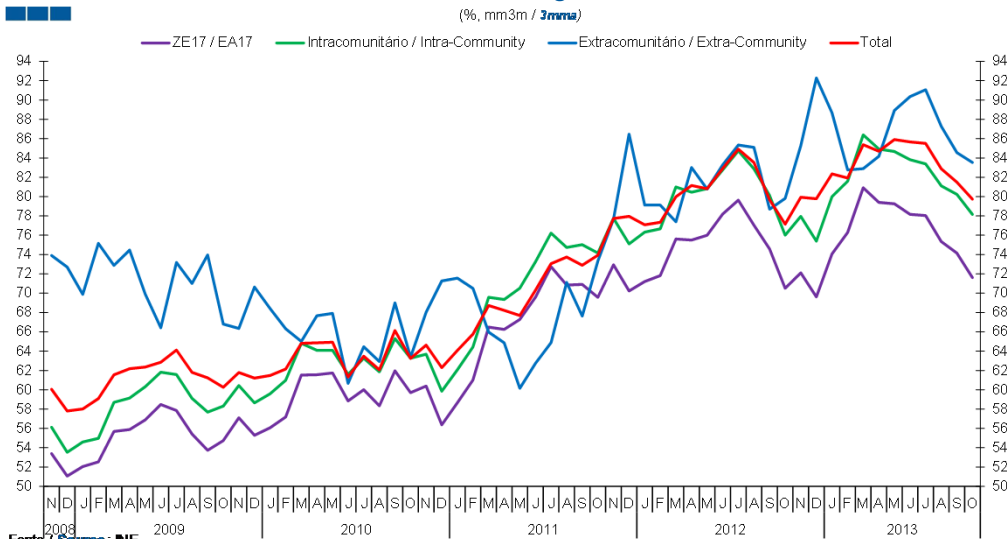
1. Total

Gráfico / Graph 1.1.
Importações e Exportações
Imports and Exports



	2011				2012				2013															
	N	D	J	F	M	A	M	J	J	A	S	O	N	D	J	F	M	A	M	J	J	A	S	O
Exportações / Exports	15.7	12.2	11.1	9.6	11.2	7.7	6.0	6.1	7.4	9.1	3.6	3.5	0.1	1.7	2.0	0.9	0.1	2.6	5.3	6.2	4.0	2.2	5.8	4.6
Importações / Imports	-3.8	-10.4	-7.6	-6.8	-4.5	-9.5	-11.2	-10.0	-7.6	-3.7	-5.2	-0.8	-2.7	-0.6	-4.5	-4.8	-6.2	-1.7	-0.9	2.8	3.2	3.0	3.5	1.2

Gráfico / Graph 1.2.
Taxa de Cobertura
Coverage Rate

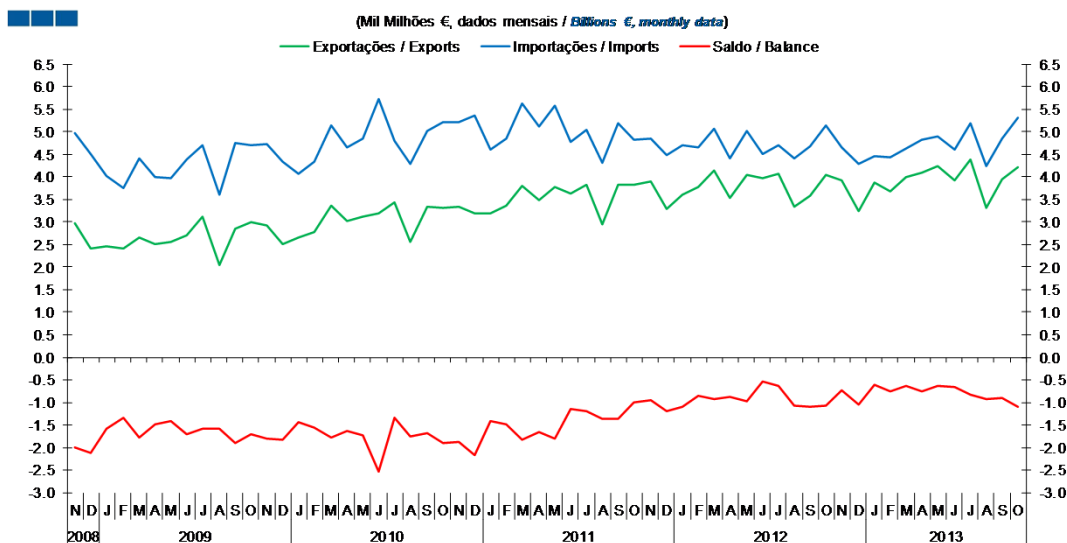


Fonte / Source: INE

	2011				2012				2013															
	N	D	J	F	M	A	M	J	J	A	S	O	N	D	J	F	M	A	M	J	J	A	S	O
ZE 17 / EA 17	72.9	70.2	71.2	71.8	75.6	75.5	76.0	78.2	79.6	77.0	74.6	70.5	72.1	69.6	74.1	76.3	80.9	79.4	79.3	78.2	78.0	75.4	74.1	71.6
Intracomunitário / Intra-community	77.7	75.1	76.3	76.7	81.0	80.5	80.8	82.8	84.7	82.9	80.1	76.0	78.0	75.4	80.0	81.6	86.4	84.9	84.7	83.8	83.4	81.1	80.2	78.1
Extracomunitário / Extra-community	77.7	86.5	79.1	79.1	77.4	83.0	80.8	83.3	85.3	85.1	78.7	79.8	85.3	92.3	88.7	82.8	82.9	84.2	88.9	90.4	91.1	87.3	84.5	83.5
Total	77.7	78.0	77.1	77.3	80.0	81.1	80.8	82.9	84.9	83.5	79.7	77.1	79.9	79.8	82.3	81.9	85.4	84.7	85.9	85.7	85.5	82.9	81.5	79.7

1. Total

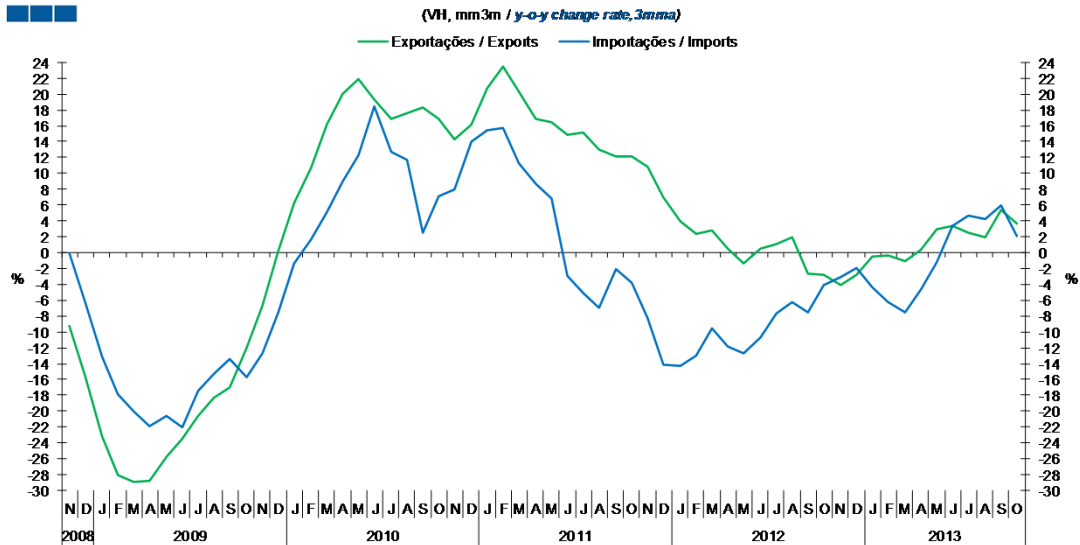
Gráfico / Graph 1.3.
Saldo
Balance



	2011		2012					2013					2013											
	N	D	J	F	M	A	M	J	J	A	S	O	N	D	J	F	M	A	M	J	J	A	S	O
Exportações / Exports	3.9	3.3	3.6	3.8	4.1	3.5	4.0	4.0	4.1	3.3	3.6	4.0	3.9	3.2	3.9	3.7	4.0	4.1	4.2	3.9	4.4	3.3	3.9	4.2
Importações / Imports	4.8	4.5	4.7	4.6	5.1	4.4	5.0	4.5	4.7	4.4	4.7	5.1	4.6	4.3	4.5	4.4	4.6	4.8	4.9	4.6	5.2	4.2	4.8	5.3
Saldo / Balance	-0.9	-1.2	-1.1	-0.9	-0.9	-0.9	-1.0	-0.5	-0.6	-1.1	-1.1	-1.1	-0.7	-1.0	-0.6	-0.7	-0.6	-0.7	-0.6	-0.7	-0.8	-0.9	-0.9	-1.1

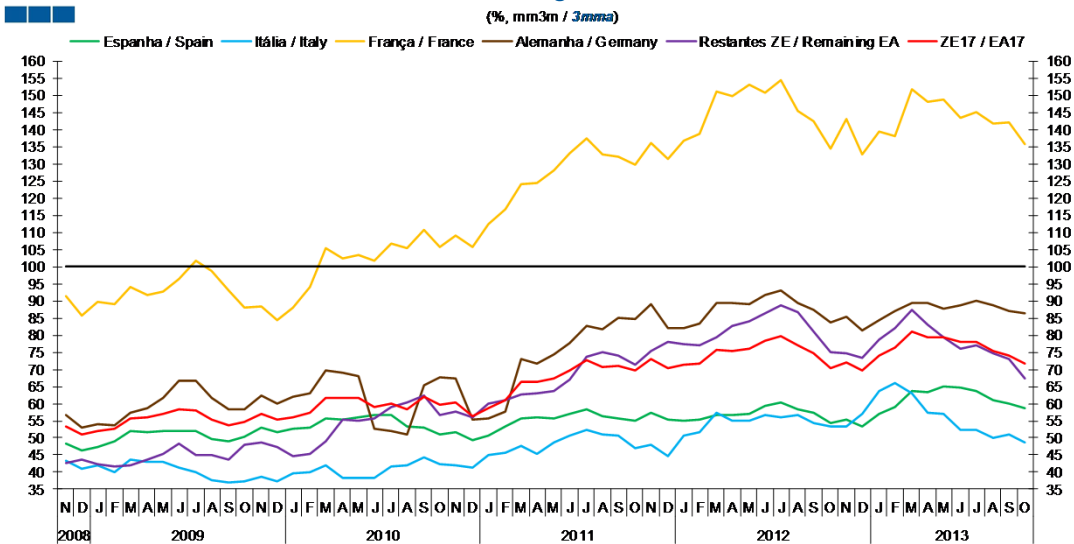
2. Zona Euro-17 / Euro Area-17

Gráfico / Graph 2.1.
 Importações e Exportações
 Imports and Exports



	2011		2012					2013					2013											
	N	D	J	F	M	A	M	J	J	A	S	O	N	D	J	F	M	A	M	J	J	A	S	O
Exportações / Exports	10.8	6.9	4.0	2.4	2.8	0.5	-1.4	0.4	1.1	2.0	-2.7	-2.8	-4.1	-2.8	-0.5	-0.4	-1.0	0.3	2.9	3.3	2.6	2.0	5.4	3.7
Importações / Imports	-8.3	-14.2	-14.3	-13.0	-9.6	-11.8	-12.7	-10.6	-7.7	-6.2	-7.5	-4.1	-3.0	-1.9	-4.3	-6.2	-7.5	-4.6	-1.3	3.4	4.6	4.3	6.0	2.1

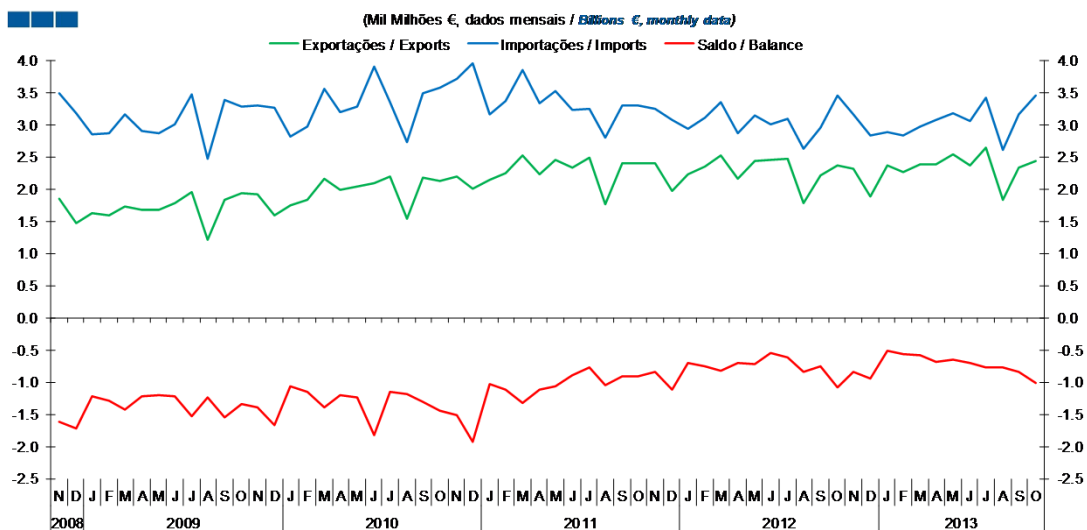
Gráfico / Graph 2.2.
 Taxa de Cobertura
 Coverage Rate



	2011		2012					2013					2013											
	N	D	J	F	M	A	M	J	J	A	S	O	N	D	J	F	M	A	M	J	J	A	S	O
Espanha / Spain	57.2	55.2	54.9	55.3	56.8	56.7	57.0	59.4	60.4	58.5	57.3	54.5	55.4	53.4	57.0	59.0	63.6	63.4	64.9	64.8	63.8	61.1	60.0	58.8
Itália / Italy	48.1	44.6	50.8	51.7	57.4	55.0	55.1	56.6	55.9	56.6	54.2	53.3	53.2	57.1	63.6	65.9	63.0	57.5	57.0	52.4	52.4	49.9	51.0	48.7
França / France	136.0	131.4	136.8	138.7	151.1	149.7	153.3	150.8	154.6	145.4	142.5	134.5	143.1	132.7	139.5	138.2	151.9	148.2	148.7	143.5	145.1	141.8	142.2	135.7
Alemanha / Germany	88.9	82.1	82.1	83.4	89.5	89.3	89.0	91.8	92.9	89.5	87.5	83.5	85.4	81.2	84.3	87.0	89.5	89.5	87.6	88.8	90.0	88.8	87.0	86.5
Restantes ZE / Remaining EA	75.5	78.1	77.2	76.9	79.3	82.8	84.1	86.2	88.7	86.6	81.0	74.9	74.7	73.5	78.6	82.1	87.2	83.1	79.4	76.0	77.0	74.6	72.9	67.3
ZE 17 / EA 17	72.9	70.2	71.2	71.8	75.6	75.5	76.0	78.2	79.6	77.0	74.6	70.5	72.1	69.6	74.1	76.3	80.9	79.4	79.3	78.2	78.0	75.4	74.1	71.6

2. Zona Euro-17 / Euro Area-17

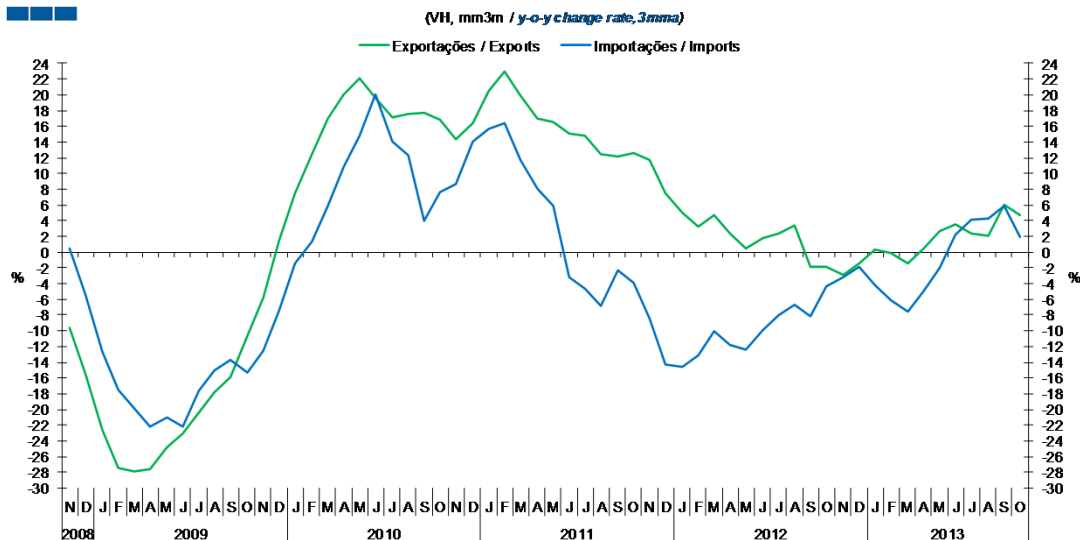
Gráfico / Graph 2.3.
 Saldo
 Balance



	2011		2012					2013					2013											
	N	D	J	F	M	A	M	J	J	A	S	O	N	D	J	F	M	A	M	J	J	A	S	O
Exportações / Exports	2.4	2.0	2.2	2.4	2.5	2.2	2.4	2.5	2.5	1.8	2.2	2.4	2.3	1.9	2.4	2.3	2.4	2.4	2.5	2.4	2.6	1.8	2.3	2.4
Importações / Imports	3.3	3.1	2.9	3.1	3.3	2.9	3.1	3.0	3.1	2.6	3.0	3.4	3.2	2.8	2.9	2.8	3.0	3.1	3.2	3.1	3.4	2.6	3.2	3.4
Saldo / Balance	-0.8	-1.1	-0.7	-0.8	-0.8	-0.7	-0.7	-0.6	-0.6	-0.8	-0.8	-1.1	-0.8	-1.0	-0.5	-0.6	-0.6	-0.7	-0.7	-0.7	-0.8	-0.8	-0.8	-1.0

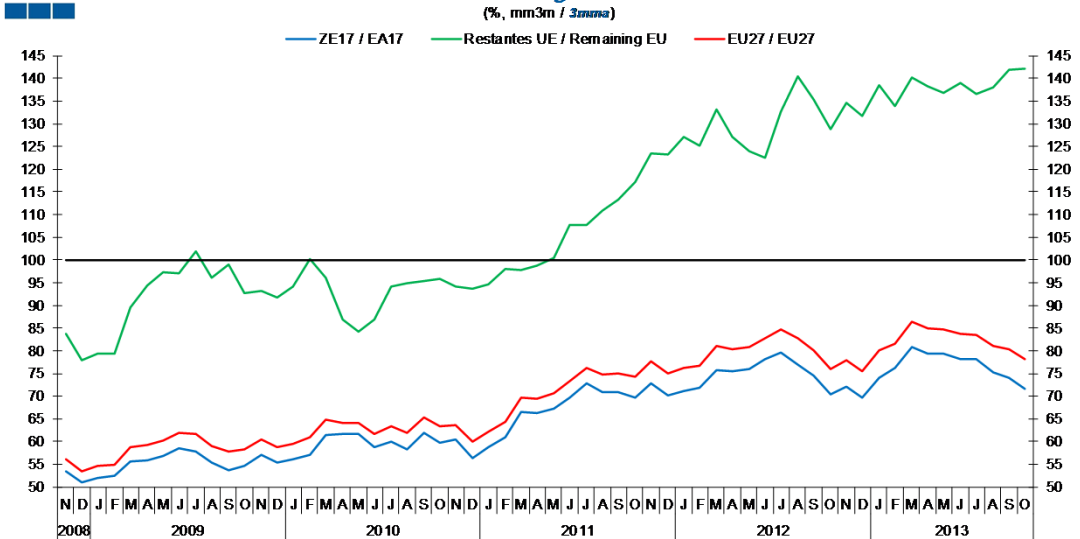
3. Intracomunitário / Intra-Community

Gráfico / Graph 3.1.
 Importações e Exportações
 Imports and Exports



	2011		2012					2010					2011					2012					2013				
	N	D	J	F	M	A	M	J	J	A	S	O	N	D	J	F	M	A	M	J	J	A	S	O			
Exportações / Exports	11.7	7.5	5.0	3.3	4.7	2.3	0.5	1.8	2.3	3.4	-1.9	-1.9	-2.9	-1.4	0.3	-0.1	-1.5	0.4	2.6	3.5	2.4	2.0	6.0	4.8			
Importações / Imports	-8.5	-14.3	-14.6	-13.2	-10.1	-11.8	-12.4	-9.9	-8.0	-6.7	-8.1	-4.3	-3.2	-1.8	-4.3	-6.1	-7.6	-4.9	-2.0	2.3	4.1	4.2	5.9	1.9			

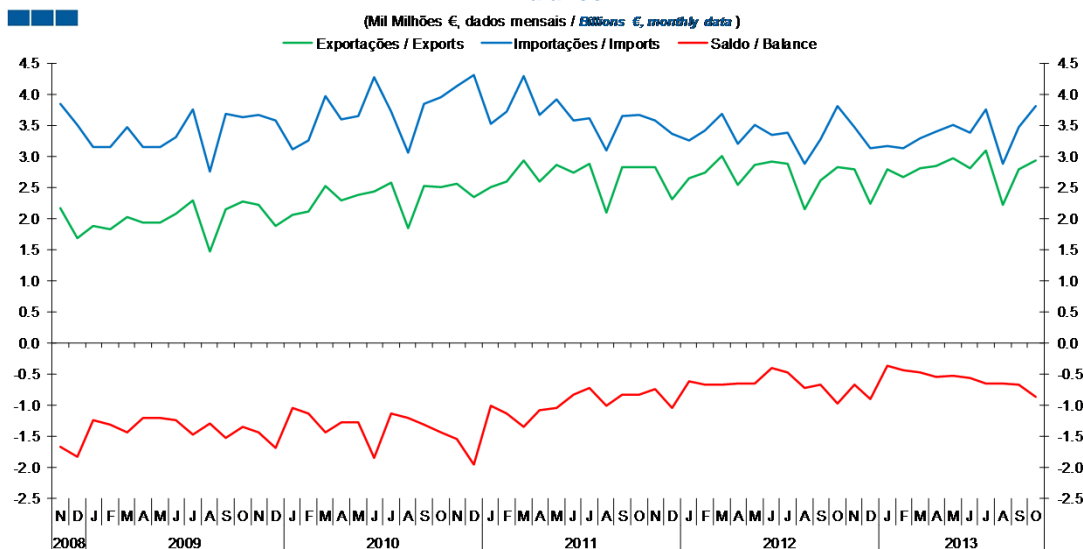
Gráfico / Graph 3.2.
 Taxa de Cobertura
 Coverage Rate



	2011		2012					2010					2011					2012					2013				
	N	D	J	F	M	A	M	J	J	A	S	O	N	D	J	F	M	A	M	J	J	A	S	O			
ZE 17 / EA 17	72.9	70.2	71.2	71.8	75.6	75.5	76	78.2	79.6	77	74.6	70.5	72.1	69.6	74.1	76.3	80.9	79.4	79.3	78.2	78	75.4	74.1	71.6			
UE 27 / EU 27	77.7	75.1	76.3	76.7	81	80.5	80.8	82.8	84.7	82.9	80.1	76	78	75.4	80	81.6	86.4	84.9	84.7	83.8	83.4	81.1	80.2	78.1			
Restantes UE / Remaining EU	123.5	123.3	127.1	125.2	133.2	127.1	123.9	122.5	132.8	140.4	135.3	128.9	134.7	131.8	138.6	133.9	140.1	138.3	136.9	138.9	136.7	138.1	141.8	142.2			

3. Intracomunitário / Intra-Community

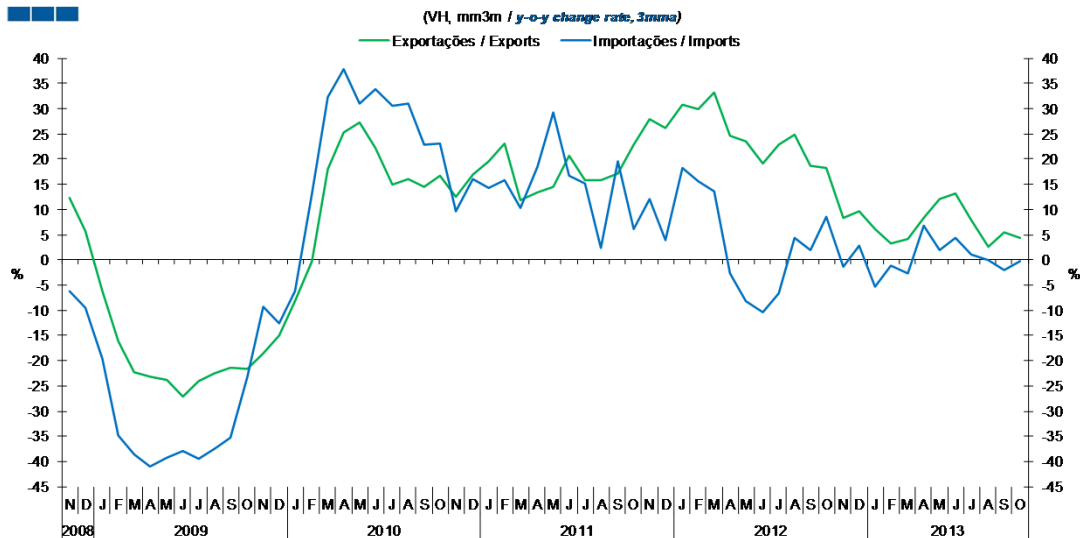
Gráfico / Graph 3.3.
 Saldo
 Balance



	2011		2012												2013									
	N	D	J	F	M	A	M	J	J	A	S	O	N	D	J	F	M	A	M	J	J	A	S	O
Exportações / Exports	2.8	2.3	2.6	2.7	3.0	2.5	2.9	2.9	2.9	2.1	2.6	2.8	2.8	2.2	2.8	2.7	2.8	2.8	3.0	2.8	3.1	2.2	2.8	2.9
Importações / Imports	3.6	3.4	3.3	3.4	3.7	3.2	3.5	3.3	3.4	2.9	3.3	3.8	3.5	3.1	3.2	3.1	3.3	3.4	3.5	3.4	3.7	2.9	3.5	3.8
Saldo / Balance	-0.7	-1.0	-0.6	-0.7	-0.7	-0.7	-0.7	-0.4	-0.5	-0.7	-0.7	-1.0	-0.7	-0.9	-0.4	-0.5	-0.5	-0.6	-0.5	-0.6	-0.7	-0.7	-0.7	-0.9

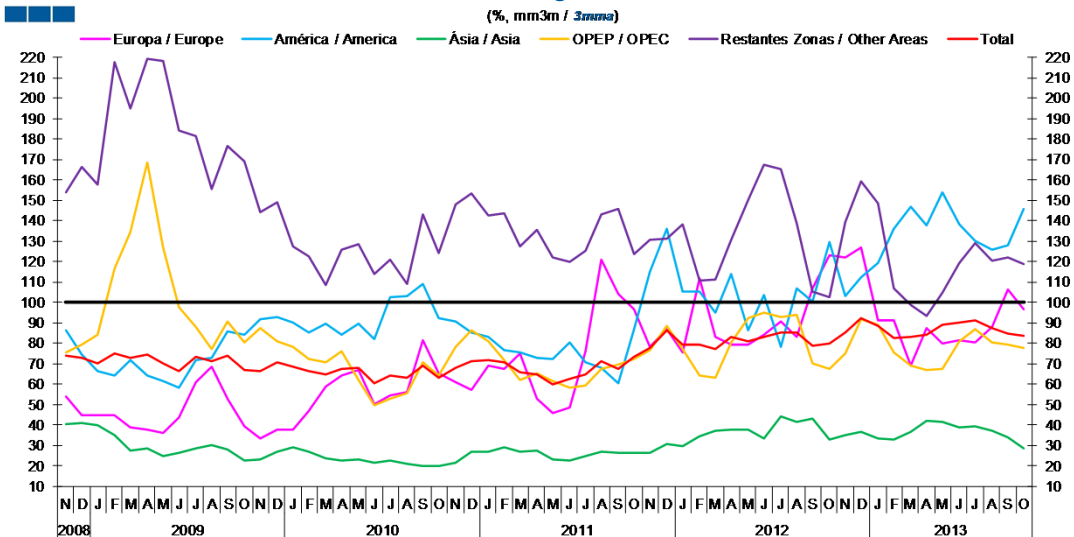
4. Extracomunitário / Extra-Community

Gráfico / Graph 4.1.
Importações e Exportações
Imports and Exports



	2011		2012		2013		2013		2013		2013		2013		2013		2013		2013		2013			
	N	D	J	F	M	A	M	J	J	A	S	O	N	D	J	F	M	A	M	J	J	A	S	O
Exportações / Exports	27.9	26.2	30.8	29.8	33.2	24.7	23.5	19.1	22.8	24.9	18.7	18.2	8.3	9.7	6.2	3.3	4.2	8.3	12.1	13.1	7.9	2.6	5.4	4.3
Importações / Imports	12.0	4.0	18.3	15.6	13.6	-2.6	-8.1	-10.3	-6.7	4.4	2.0	8.6	-1.3	2.8	-5.3	-1.2	-2.7	6.8	1.9	4.3	1.1	0.1	-1.9	-0.3

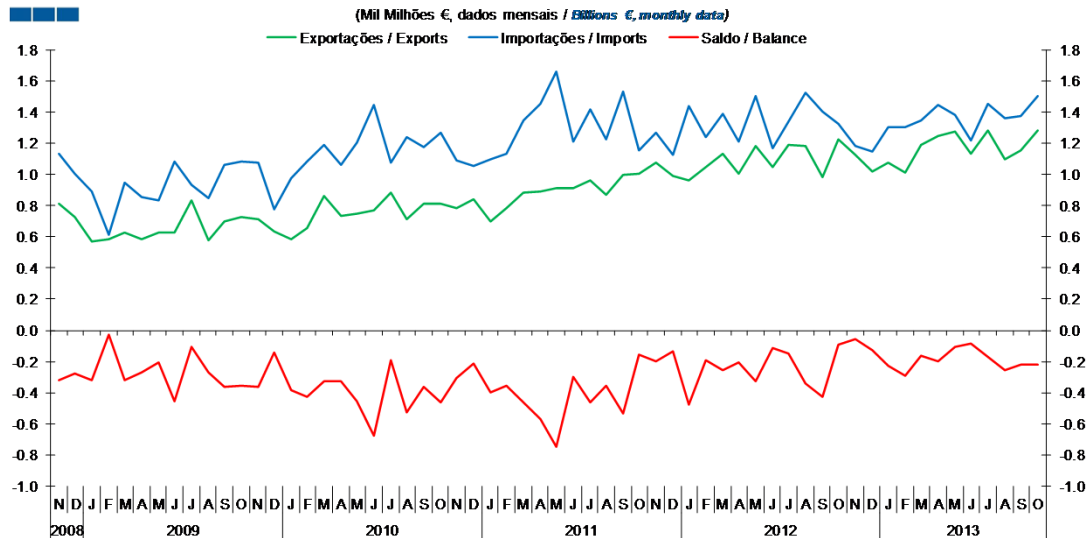
Gráfico / Graph 4.2.
Taxa de Cobertura
Coverage Rate



	2011		2012		2013		2013		2013		2013		2013		2013		2013		2013		2013			
	N	D	J	F	M	A	M	J	J	A	S	O	N	D	J	F	M	A	M	J	J	A	S	O
Europa / Europe	78.4	86.6	75.8	112.0	83.1	79.3	79.5	84.2	90.7	83.1	106.8	123.1	122.0	126.6	91.4	91.1	69.2	87.5	79.7	81.3	80.4	88.2	106.6	96.3
América / America	114.7	136.2	105.0	105.5	95.2	114.0	86.3	103.5	78.3	106.9	100.6	129.4	103.0	112.0	119.5	135.9	146.6	137.8	153.9	138.0	130.0	125.5	127.9	145.7
Ásia / Asia	26.2	30.5	29.7	34.4	37.4	38.0	38.0	33.5	44.0	41.5	43.4	33.1	35.2	36.5	33.4	33.1	36.9	42.0	41.3	38.6	39.3	37.0	33.7	28.7
OPEP / OPEC	76.9	88.6	77.2	64.1	63.1	80.3	92.3	94.9	92.9	94.1	70.1	67.7	74.7	91.9	89.1	75.3	69.0	67.0	67.6	81.2	86.8	80.4	79.4	77.6
Restantes Zonas / Other Areas	130.6	131.2	138.0	110.6	111.2	130.8	150.1	167.4	165.2	138.9	105.4	102.4	139.4	159.1	148.7	106.9	98.7	93.3	104.9	119.1	129.2	120.1	121.7	118.7
Total	77.7	86.5	79.1	79.1	77.4	83.0	80.8	83.3	85.3	85.1	78.7	79.8	85.3	92.3	88.7	82.8	82.9	84.2	88.9	90.4	91.1	87.3	84.5	83.5

4. Extracomunitário / Extra-Community

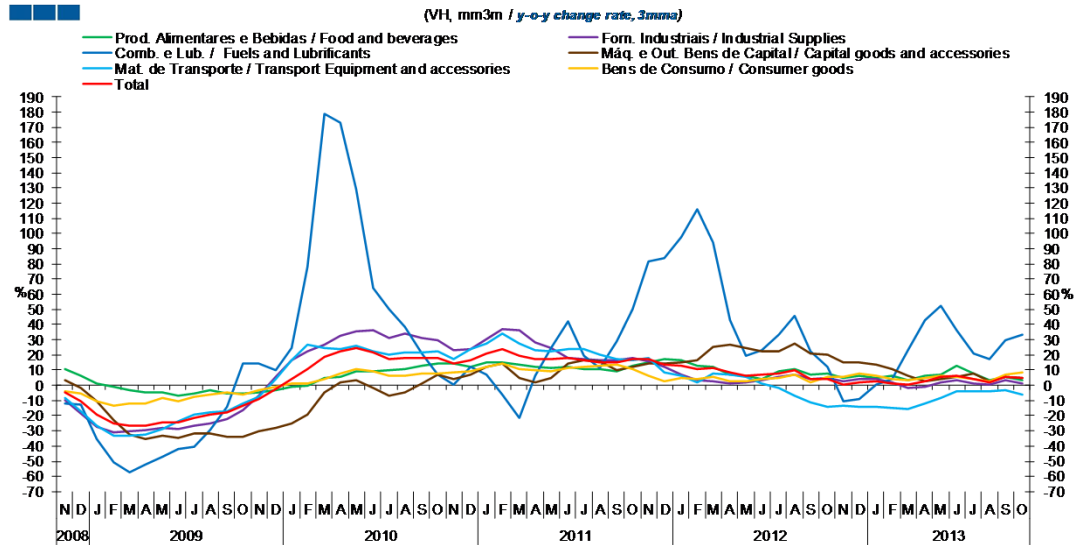
Gráfico / Graph 4.3.
 Saldo
 Balance



	2011		2012					2013					2013											
	N	D	J	F	M	A	M	J	J	A	S	O	N	D	J	F	M	A	M	J	J	A	S	O
Exportações / Exports	1.1	1.0	1.0	1.0	1.1	1.0	1.2	1.0	1.2	1.2	1.0	1.2	1.1	1.0	1.1	1.0	1.2	1.2	1.3	1.1	1.3	1.1	1.2	1.3
Importações / Imports	1.3	1.1	1.4	1.2	1.4	1.2	1.5	1.2	1.3	1.5	1.4	1.3	1.2	1.1	1.3	1.3	1.3	1.4	1.4	1.2	1.4	1.4	1.4	1.5
Saldo / Balance	-0.2	-0.1	-0.5	-0.2	-0.3	-0.2	-0.3	-0.1	-0.1	-0.3	-0.4	-0.1	-0.1	-0.1	-0.1	-0.2	-0.3	-0.2	-0.2	-0.1	-0.1	-0.2	-0.3	-0.2

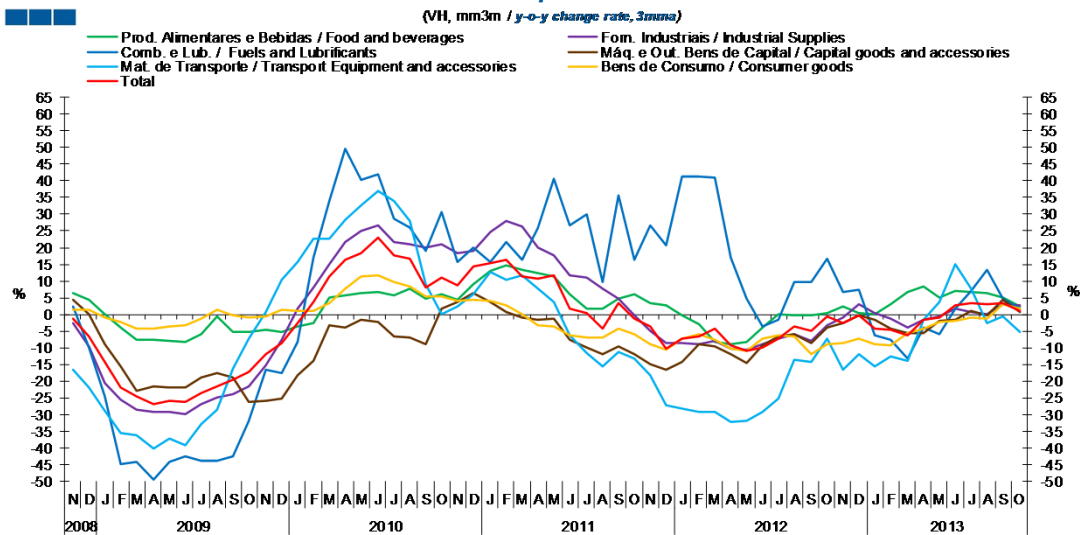
5. Grandes Categorias Económicas / Broad Economic Categories

Gráfico / Graph 5.1.
Exportações
Exports



	2011		2012					2013					2013											
	N	D	J	F	M	A	M	J	J	A	S	O	N	D	J	F	M	A	M	J	J	A	S	O
Produtos Alimentares e Bebidas / Food and Beverages	14.8	17.5	16.8	13.0	12.3	6.9	6.4	4.2	9.0	10.6	7.1	7.6	4.6	5.9	4.8	6.2	3.5	6.4	7.3	12.8	8.0	3.2	5.2	3.5
Comb. e Lub. / Fuels and Lubricants	81.9	83.5	97.5	115.8	94.0	42.7	19.3	23.2	33.2	45.6	22.4	12.2	-10.5	-8.8	0.8	4.3	23.0	42.6	52.1	36.3	20.7	17.5	29.6	33.1
Mat. de Transporte / Transport equipment and accessories	18.2	8.7	6.4	1.9	7.8	6.8	5.2	0.9	-1.5	-7.1	-11.6	-14.3	-13.7	-14.4	-13.9	-14.9	-15.9	-12.3	-8.4	-3.7	-3.6	-4.0	-3.5	-5.9
Forn. Industriais / Industrial Supplies	16.0	12.0	7.2	3.3	2.7	1.5	1.7	3.6	5.3	6.7	3.8	4.7	2.4	4.3	4.3	1.9	-1.4	-1.0	1.6	3.3	1.3	0.2	3.5	0.9
Máq. e Out. Bens de Capital / Capital Goods and Accessories	14.3	14.2	14.9	16.6	25.4	26.8	24.4	22.3	22.6	27.7	21.1	20.3	15.1	15.3	13.3	10.5	6.5	2.8	4.0	5.4	8.1	2.6	5.6	4.8
Bens de Consumo / Consumer Goods	6.0	2.8	4.5	4.2	5.8	2.5	2.8	4.1	4.5	6.7	1.6	5.6	5.3	8.0	6.3	4.1	3.2	5.1	6.6	5.4	3.9	2.3	7.1	8.5
Total	17.2	13.9	12.6	10.7	11.7	8.2	6.6	6.6	7.9	9.6	4.2	4.1	0.6	2.2	2.3	1.0	0.1	2.6	5.3	6.2	4.0	2.2	5.8	4.6

Gráfico / Graph 5.2.
Importações
Imports



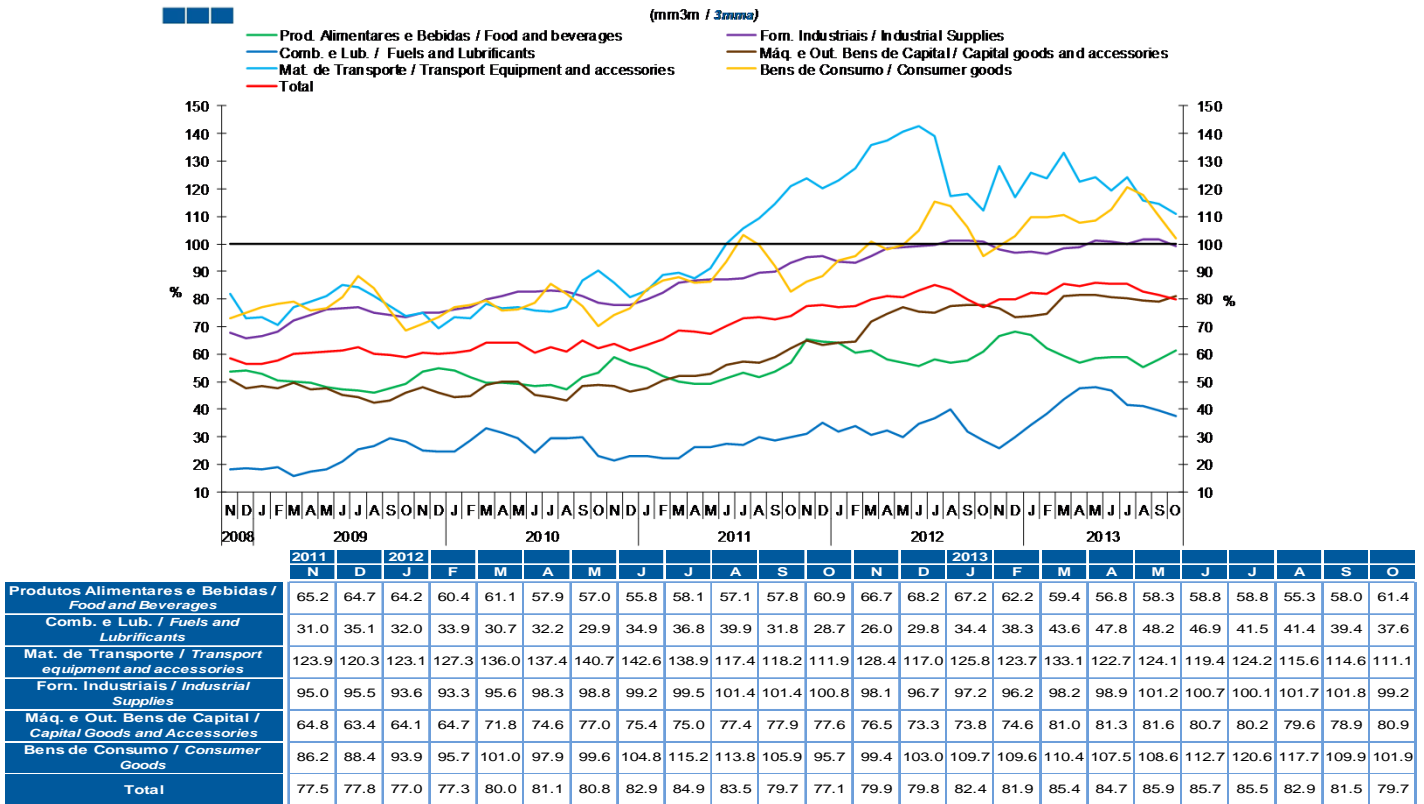
	2011		2012					2013					2013											
	N	D	J	F	M	A	M	J	J	A	S	O	N	D	J	F	M	A	M	J	J	A	S	O
Produtos Alimentares e Bebidas / Food and Beverages	3.5	2.7	-0.2	-2.9	-8.4	-9.0	-8.1	-4.1	0.0	-0.2	-0.3	0.6	2.3	0.4	0.2	3.1	6.6	8.5	4.9	7.0	6.7	6.5	4.9	2.5
Comb. e Lub. / Fuels and Lubricants	26.6	20.8	41.2	41.4	41.0	17.0	4.8	-3.5	-1.5	9.7	9.9	16.6	6.6	7.4	-6.3	-7.5	-13.3	-3.8	-5.8	1.6	7.0	13.4	4.6	1.7
Mat. de Transporte / Transport equipment and accessories	-18.2	-27.1	-28.1	-29.1	-29.0	-32.0	-31.9	-29.3	-25.1	-13.4	-14.3	-7.3	-16.7	-12.0	-15.7	-12.5	-14.0	-1.7	3.8	15.0	7.8	-2.5	-0.4	-5.1
Forn. Industriais / Industrial Supplies	-4.9	-8.6	-8.6	-8.8	-7.9	-10.4	-10.4	-8.9	-7.3	-5.9	-7.7	-3.3	-0.8	3.1	0.5	-1.1	-4.0	-1.6	-0.7	1.8	0.7	-0.1	3.1	2.6
Máq. e Out. Bens de Capital / Capital Goods and Accessories	-14.9	-16.6	-14.4	-8.9	-9.4	-11.8	-14.5	-9.3	-6.5	-6.0	-8.7	-3.8	-2.5	-0.3	-1.5	-4.1	-5.5	-5.6	-1.9	-1.6	1.0	-0.3	4.3	0.6
Bens de Consumo / Consumer Goods	-8.9	-10.7	-7.2	-5.8	-7.7	-10.1	-10.7	-7.2	-6.2	-6.6	-11.8	-8.8	-8.7	-7.4	-9.0	-9.1	-5.7	-4.3	-2.3	-2.0	-0.8	-1.1	3.1	1.9
Total	-3.6	-10.2	-7.3	-6.5	-4.3	-9.2	-11.0	-9.8	-7.4	-3.5	-5.0	-0.5	-2.4	-0.4	-4.4	-4.7	-6.2	-1.7	-0.9	2.8	3.2	3.0	3.5	1.2

Nota: Não inclui Bens N.E. Nouta Categoria devido ao seu reduzido valor relativo e elevada variabilidade.

Note: Does not include Goods Not Elsewhere Specified because of its small relative value and high variability

5. Grandes Categorias Económicas / Broad Economic Categories

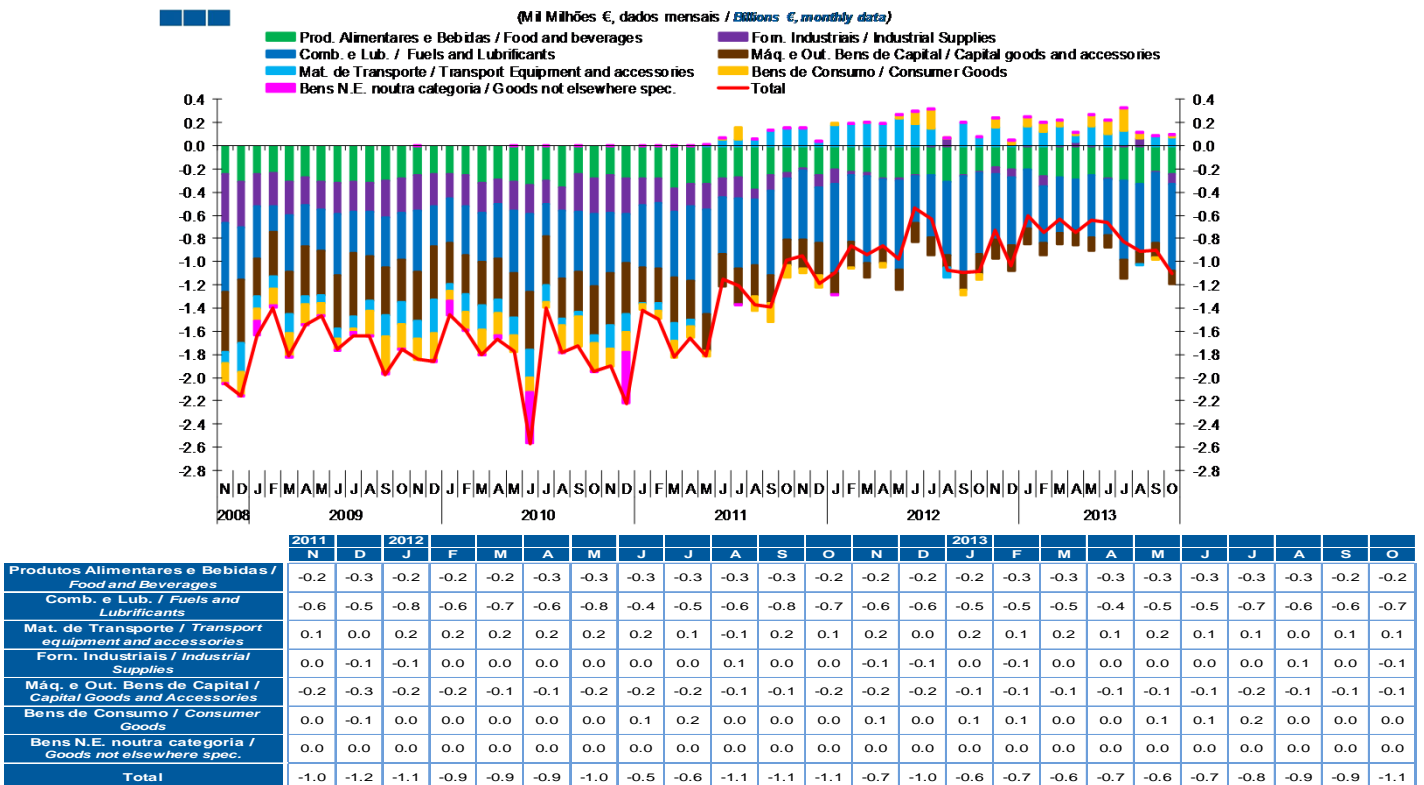
Gráfico / Graph 5.3.
Taxa de Cobertura
Coverage Rate



Nota: Não inclui Bens N.E. Outra Categoria devido ao seu reduzido valor relativo e elevada variabilidade.

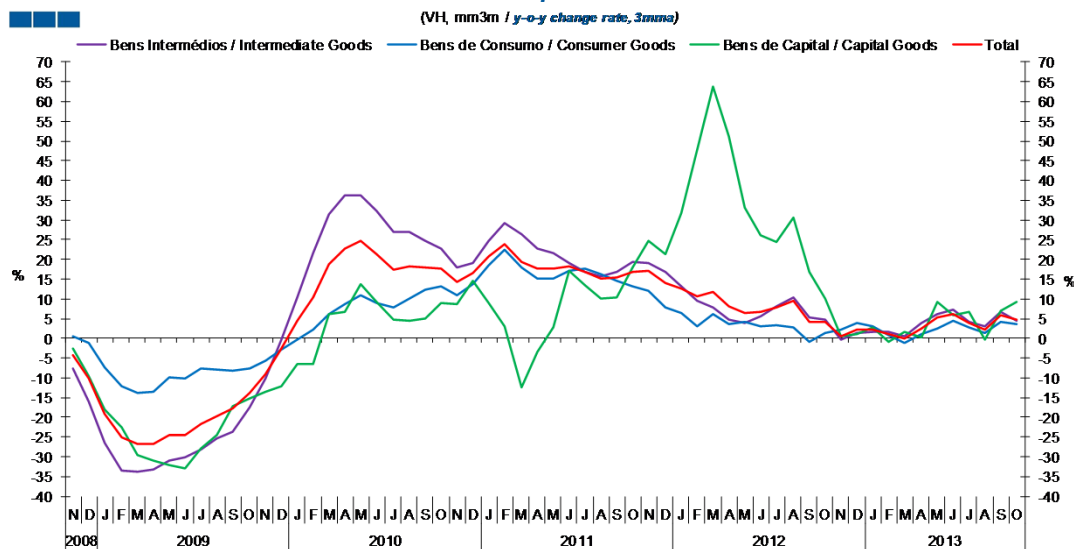
Note: Does not include Goods Not Elsewhere Specified because of its small relative value and high variability

Gráfico / Graph 5.4.
Saldo
Balance



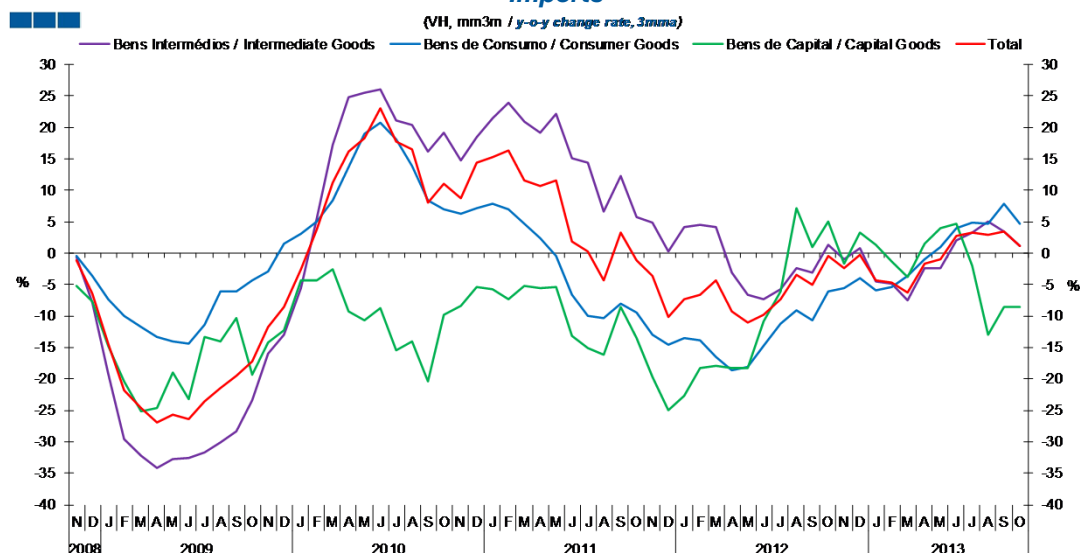
6. Classes Básicas de Bens do Sistema Europeu de Contas Nacionais / Basic Classes of Goods in the European System of Accounts

Gráfico / Graph 6.1.
Exportações
Exports



	2011		2012					2013					2013											
	N	D	J	F	M	A	M	J	J	A	S	O	N	D	J	F	M	A	M	J	J	A	S	O
Bens Intermediários / Intermediate Goods	19.2	16.7	13.2	9.7	7.9	4.7	3.9	5.5	8.0	10.5	5.4	4.6	-0.4	1.3	1.7	1.5	0.5	3.8	6.1	7.2	4.1	3.2	6.6	4.4
Bens de Consumo / Consumer Goods	12.2	7.7	6.4	3.1	6.2	3.7	4.1	3.1	3.3	2.8	-1.0	1.4	2.3	3.9	3.0	0.8	-1.2	1.1	2.4	4.6	2.8	1.3	4.1	3.6
Bens de Capital / Capital Goods	24.6	21.2	31.7	47.6	63.9	51.0	33.1	26.0	24.4	30.7	16.9	10.1	0.5	1.1	2.8	-0.8	1.5	0.4	9.3	5.8	6.6	-0.2	6.9	9.4
Total	17.2	13.9	12.6	10.7	11.7	8.2	6.6	6.6	7.9	9.6	4.2	4.1	0.6	2.2	2.3	1.0	0.1	2.6	5.3	6.2	4.0	2.2	5.8	4.6

Gráfico / Graph 6.2.
Importações
Imports



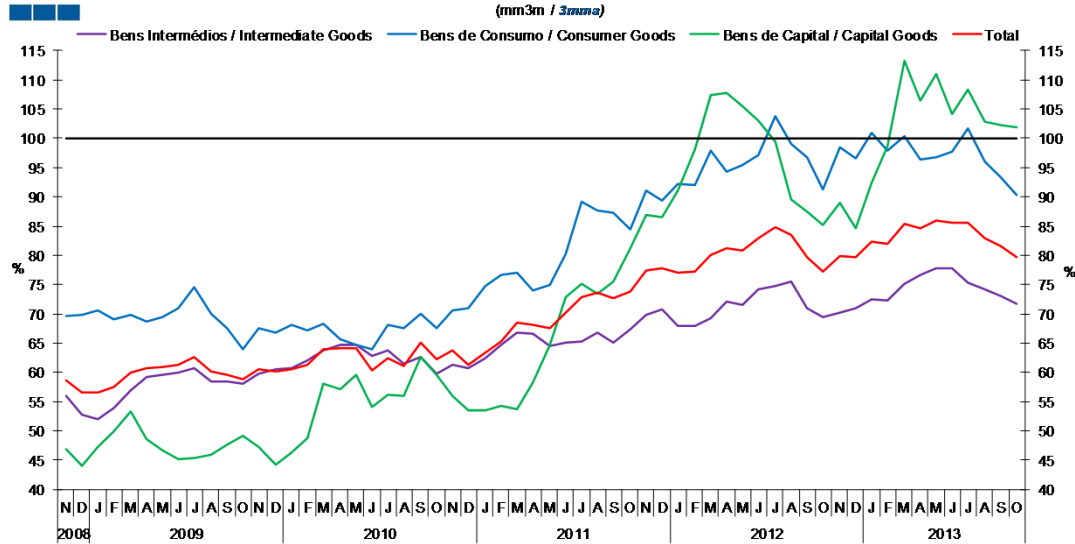
	2011		2012					2013					2013											
	N	D	J	F	M	A	M	J	J	A	S	O	N	D	J	F	M	A	M	J	J	A	S	O
Bens Intermediários / Intermediate Goods	4.8	0.2	4.1	4.5	4.2	-3.1	-6.6	-7.4	-5.8	-2.4	-3.2	1.4	-1.1	0.8	-4.6	-4.8	-7.5	-2.5	-2.4	2.1	3.3	4.9	3.4	1.2
Bens de Consumo / Consumer Goods	-13.0	-14.6	-13.6	-13.9	-16.5	-18.7	-18.2	-14.8	-11.2	-9.1	-10.7	-6.1	-5.5	-3.9	-5.9	-5.5	-3.7	-1.0	1.0	4.1	4.9	4.6	7.8	4.6
Bens de Capital / Capital Goods	-19.7	-25.0	-22.7	-18.4	-18.0	-18.3	-18.3	-10.9	-6.1	7.2	1.0	5.0	-1.7	3.3	1.3	-1.4	-3.8	1.6	3.9	4.7	-2.1	-13.0	-8.6	-8.6
Total	-3.6	-10.2	-7.3	-6.5	-4.3	-9.2	-11.0	-9.8	-7.4	-3.5	-5.0	-0.5	-2.4	-0.4	-4.4	-4.7	-6.2	-1.7	-0.9	2.8	3.2	3.0	3.5	1.2

Nota: Não inclui a série Outros Bens devido ao seu baixo valor relativo e elevada variabilidade.

Note: Does not include Other Goods because of its small relative value and high variability.

6. Classes Básicas de Bens do Sistema Europeu de Contas Nacionais / Basic Classes of Goods in the European System of Accounts

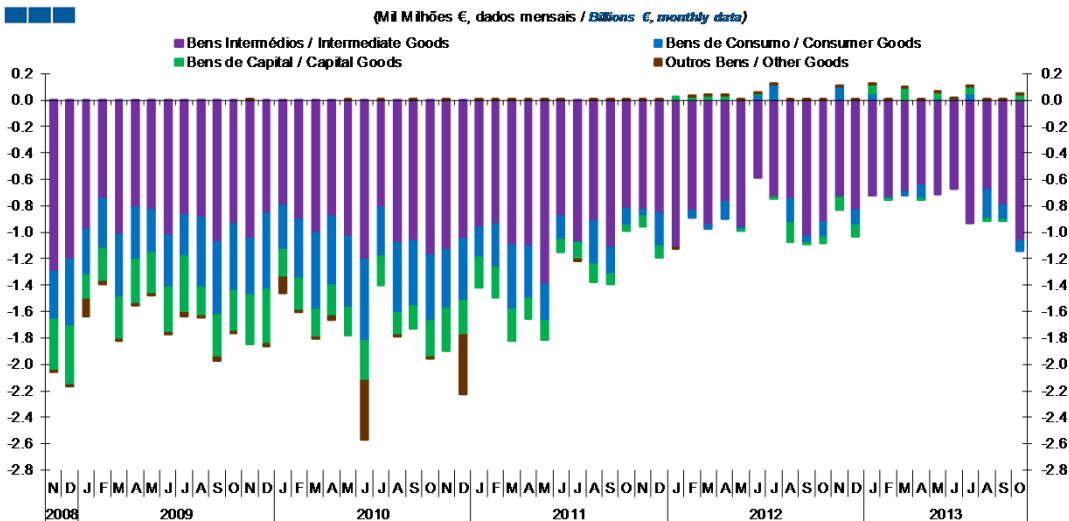
Gráfico / Graph 6.3.
Taxa de Cobertura
Coverage Rate



	2011		2012					2013					2013											
	N	D	J	F	M	A	M	J	J	A	S	O	N	D	J	F	M	A	M	J	J	A	S	O
Bens Intermediários / Intermediate Goods	69.7	70.7	67.9	67.8	69.2	72.0	71.6	74.1	74.8	75.5	70.9	69.5	70.2	71.0	72.4	72.4	75.2	76.7	77.8	77.8	75.4	74.2	73.1	71.6
Bens de Consumo / Consumer Goods	91.0	89.4	92.1	91.9	97.9	94.4	95.4	97.2	103.7	99.0	96.8	91.2	98.5	96.7	100.9	98.0	100.4	96.3	96.8	97.7	101.7	95.9	93.4	90.3
Bens de Capital / Capital Goods	87.0	86.4	91.0	98.1	107.4	107.7	105.5	103.1	99.5	89.6	87.4	85.2	88.9	84.6	92.4	98.7	113.3	106.5	110.9	104.1	108.4	102.8	102.3	102.0
Total	77.5	77.8	77.0	77.3	80.0	81.1	80.8	82.9	84.9	83.5	79.7	77.1	79.9	79.8	82.4	81.9	85.4	84.7	85.9	85.7	85.5	82.9	81.5	79.7

Nota: Não inclui a série Outros Bens devido ao seu baixo valor relativo e elevada variabilidade.
Note: Does not include Other Goods because of its small relative value and high variability.

Gráfico / Graph 6.4.
Saldo de Bens
Balance of Goods



	2011		2012					2013					2013											
	N	D	J	F	M	A	M	J	J	A	S	O	N	D	J	F	M	A	M	J	J	A	S	O
Bens Intermediários / Intermediate Goods	-0.8	-0.9	-1.1	-0.8	-0.9	-0.8	-1.0	-0.6	-0.7	-0.7	-1.0	-0.9	-0.7	-0.8	-0.7	-0.7	-0.7	-0.6	-0.7	-0.7	-0.9	-0.7	-0.8	-1.1
Bens de Consumo / Consumer Goods	-0.1	-0.3	0.0	-0.1	0.0	-0.1	0.0	0.0	0.1	-0.2	0.0	-0.1	0.1	-0.1	0.1	0.0	0.0	-0.1	0.0	0.0	0.1	-0.2	-0.1	-0.1
Bens de Capital / Capital Goods	-0.1	-0.1	0.0	0.0	0.0	0.0	0.0	0.0	0.0	-0.1	0.0	0.0	-0.1	-0.1	0.1	0.0	0.1	0.0	0.0	0.0	0.0	0.0	0.0	0.0
Outros Bens / Other Goods	0.0	0.0	0.0	0.0	0.0	0.0	0.0	0.0	0.0	0.0	0.0	0.0	0.0	0.0	0.0	0.0	0.0	0.0	0.0	0.0	0.0	0.0	0.0	0.0
Total	-1.0	-1.2	-1.1	-0.9	-0.9	-0.9	-1.0	-0.5	-0.6	-1.1	-1.1	-1.1	-0.7	-1.0	-0.6	-0.7	-0.6	-0.7	-0.6	-0.7	-0.8	-0.9	-0.9	-1.1

6. Classes Básicas de Bens do Sistema Europeu de Contas Nacionais / Basic Classes of Goods in the European System of Accounts

Tabela / Table 1.1.
Estrutura do Saldo
Balance Structure

Milhões de euros \ Millions of euros

		2012		2013		2013		2013		2013		2013		2013		2013		2013		2013		2013			
		N		D		J		F		M		A		M		J		J		A		S		O	
		M€	%	M€	%	M€	%	M€	%	M€	%	M€	%	M€	%	M€	%	M€	%	M€	%	M€	%	M€	%
Bens Intermedios / Intermediate Goods	Prod. alim. e bebidas / Foods and beverages	-139	19	-124	12	-131	22	-147	20	-163	26	-146	19	-104	16	-146	22	-154	19	-139	15	-140	16	-160	15
	Forn. industriais NE noutra categoria / Industrial supplies NE specified	-50	7	-65	6	7	-1	-87	12	9	-1	34	-5	6	-1	-12	2	11	-1	65	-7	-8	1	-89	8
	Comb. e lubrificantes / Fuel and lubricants	-541	74	-625	60	-597	100	-543	73	-581	92	-533	71	-603	94	-511	77	-742	90	-628	69	-650	72	-798	73
	Máquinas, outros bens de capital (Partes e acessórios) / Capital goods and parts and accessories	-52	7	-59	6	-55	9	-48	6	-32	5	-65	9	-66	10	-36	5	-66	8	-38	4	-54	6	-76	7
	Material de transportes (Partes e acessórios) / Transport equipment (Parts and accessories)	42	-6	41	-4	53	-9	87	-12	73	-12	66	-9	58	-9	33	-5	23	-3	64	-7	53	-6	58	-5
Total		-740	102	-832	80	-724	121	-738	99	-693	109	-644	86	-709	110	-672	102	-928	113	-676	74	-799	89	-1,066	97
Bens de Consumo / Consumption Goods	Prod. alim. e bebidas destinados ao consumo dos particulares / Food and beverages mainly for household consumption	-51	7	-83	8	-74	12	-113	15	-113	18	-142	19	-147	23	-133	20	-152	19	-195	21	-86	10	-82	8
	Material de transporte / Transport equipment	68	-9	-61	6	48	-8	30	-4	35	-6	21	-3	57	-9	22	-3	22	-3	-72	8	6	-1	-17	2
	Bens de consumo NE noutra categoria / Consumption goods NE specified	82	-11	25	-2	78	-13	77	-10	47	-7	21	-3	96	-15	117	-18	186	-23	43	-5	-23	3	21	-2
Total		99	-14	-119	12	52	-9	-6	1	-31	5	-100	13	6	-1	6	-1	56	-7	-223	24	-103	11	-78	7
Bens de Capital / Capital Goods	Carburantes para motor / Motor spirit	-32	4	40	-4	89	-15	55	-7	100	-16	87	-12	68	-11	36	-5	64	-8	48	-5	48	-5	55	-5
	Máquinas, outros bens de capital (exceto material de transporte) / Capital goods (except transport equipment)	-103	14	-160	16	-81	14	-63	8	-59	9	-63	8	-56	9	-75	11	-94	11	-68	7	-73	8	-44	4
	Material de transportes destinado à indústria / Transport equipment, industrial	46	-6	36	-4	62	-10	5	-1	49	-8	-31	4	46	-7	42	-6	77	-9	3	0	23	-3	33	-3
Total		-90	12	-84	8	70	-12	-3	0	90	-14	-6	1	58	-9	3	0	48	-6	-17	2	-2	0	44	-4
Outros / Others		3	0	1	0	1	0	2	0	1	0	3	0	2	0	1	0	2	0	2	0	3	0	2	0
Total		-728	100	-1,034	100	-600	100	-745	100	-634	100	-747	100	-643	100	-662	100	-823	100	-915	100	-901	100	-1,099	100

7. Índice GEE de Comércio Internacional de Bens / *GEE Index of International Trade of Goods*

Gráfico / *Graph 7.1.*
Total

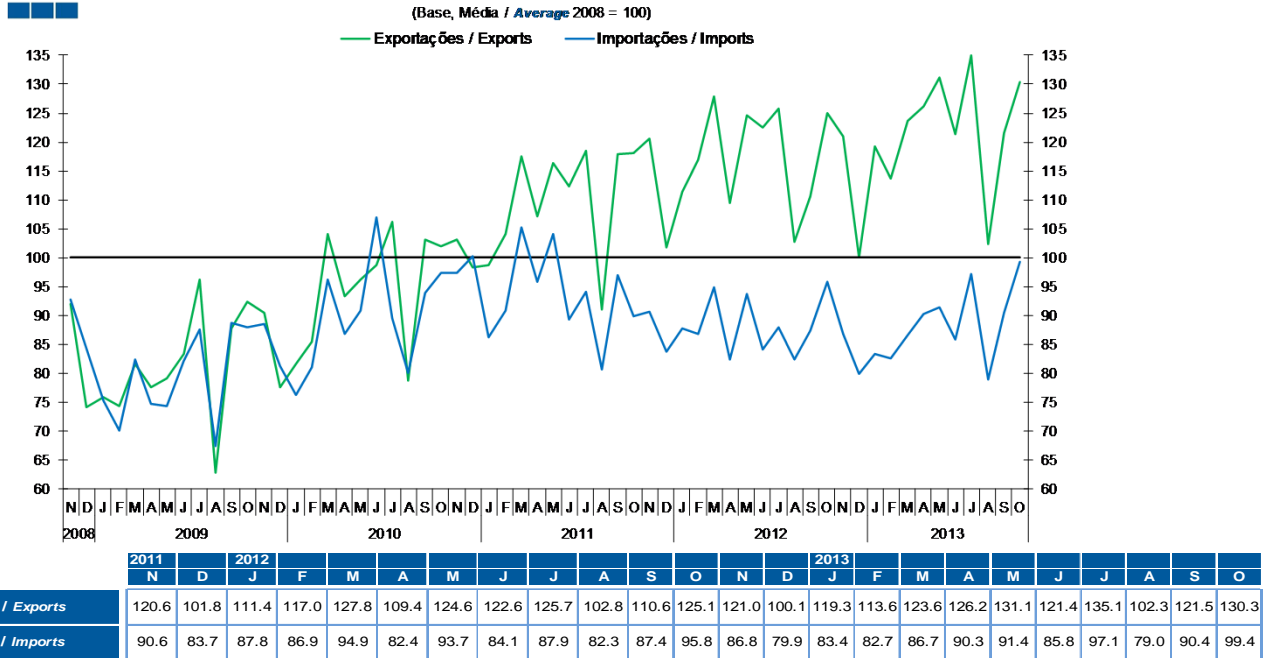
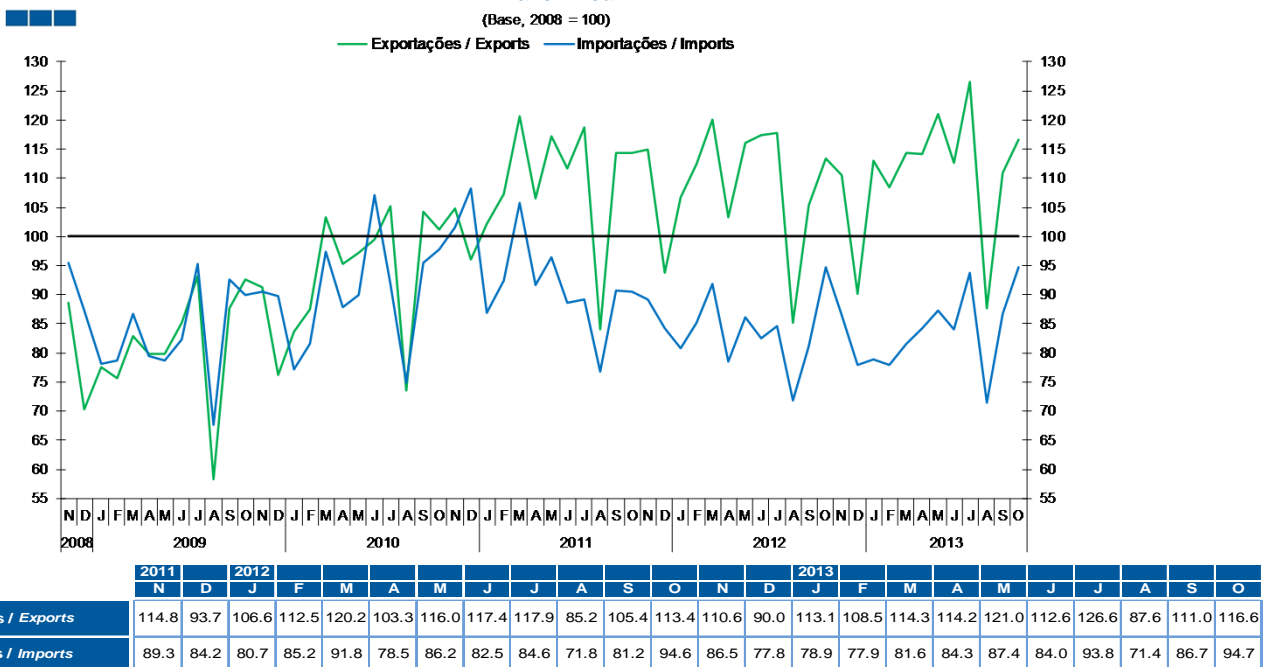


Gráfico / *Graph 7.2.*
Zona Euro
Euro Area



7. Índice GEE de Comércio Internacional de Bens / *GEE Index of International Trade of Goods*

Gráfico / Graph 7.3.
Intracomunitário
Intra-Community

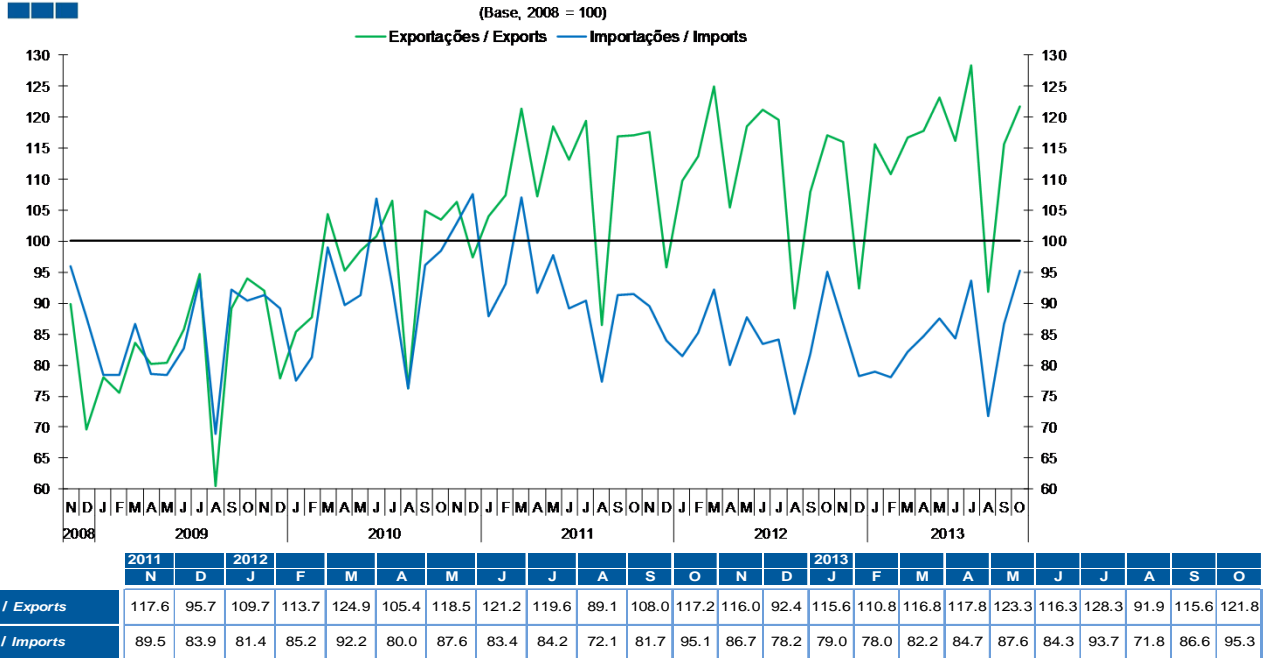


Gráfico / Graph 7.4.
Extracomunitário
Extra-Community

