

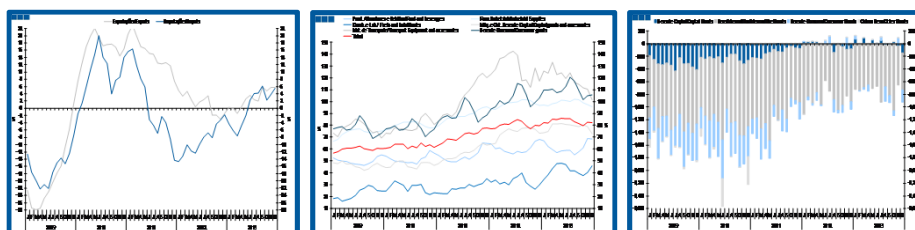
Estatísticas Temáticas de Conjuntura

Short-term Thematic Statistics

- Nº 2/2014 -

10 de fevereiro de 2014

February, 10, 2014



Comércio Internacional de Bens

International Trade of Goods

- Dezembro de 2013 -

- December, 2013 -

Fonte: Instituto Nacional de Estatística

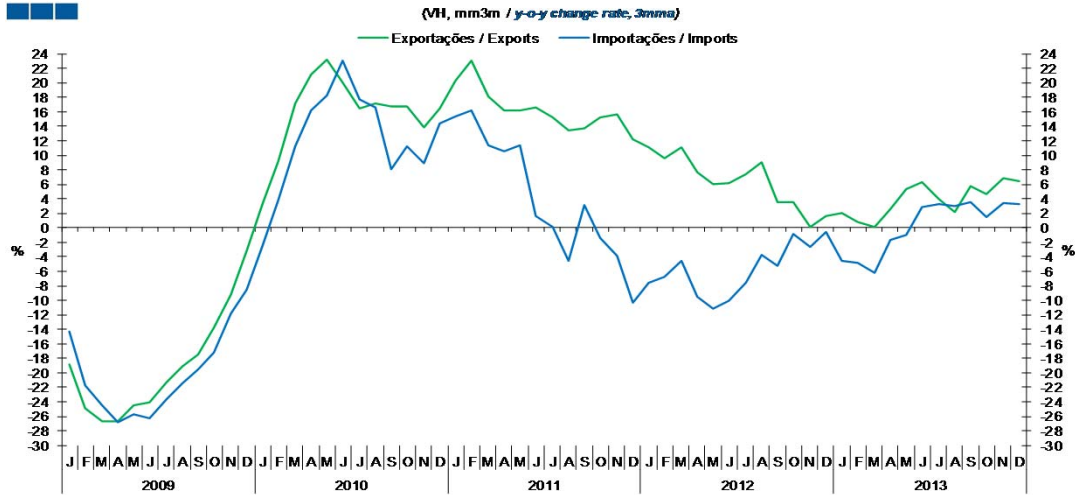
Source: Statistics Portugal

Índice / *Index*

	Página / <i>Page</i>
1. Total	
Importações e Exportações / <i>Imports and Exports</i>	3
Taxa de Cobertura / <i>Coverage Rate</i>	3
Saldo / <i>Balance</i>	4
2. Zona Euro-17 / <i>Euro Area-17</i>	
Importações e Exportações / <i>Imports and Exports</i>	5
Taxa de Cobertura / <i>Coverage Rate</i>	5
Saldo / <i>Balance</i>	6
3. Intracomunitário / <i>Intra-Community</i>	
Importações e Exportações / <i>Imports and Exports</i>	7
Taxa de Cobertura / <i>Coverage Rate</i>	7
Saldo / <i>Balance</i>	8
4. Extracomunitário / <i>Extra-Community</i>	
Importações e Exportações / <i>Imports and Exports</i>	9
Taxa de Cobertura / <i>Coverage Rate</i>	9
Saldo / <i>Balance</i>	10
5. Grandes Categorias Económicas / <i>Broad Economic Categories</i>	
Exportações / <i>Exports</i>	11
Importações / <i>Imports</i>	11
Taxa de Cobertura / <i>Coverage Rate</i>	12
Saldo / <i>Balance</i>	12
6. Classes Básicas de Bens do Sistema Europeu de Contas Nacionais / <i>Basic Classes of Goods in the European System of Accounts</i>	
Exportações / <i>Exports</i>	13
Importações / <i>Imports</i>	13
Taxa de Cobertura / <i>Coverage Rate</i>	14
Saldo / <i>Balance</i>	14
Estrutura do Saldo / <i>Balance Structure</i>	15
7. Índice GEE de Comércio Internacional de Bens / <i>GEE Index of International Trade of Goods</i>	
Total / <i>Total</i>	16
Zona Euro / <i>Euro Area</i>	16
Intracomunitário / <i>Intra-Community</i>	17
Extracomunitário / <i>Extra-Community</i>	17

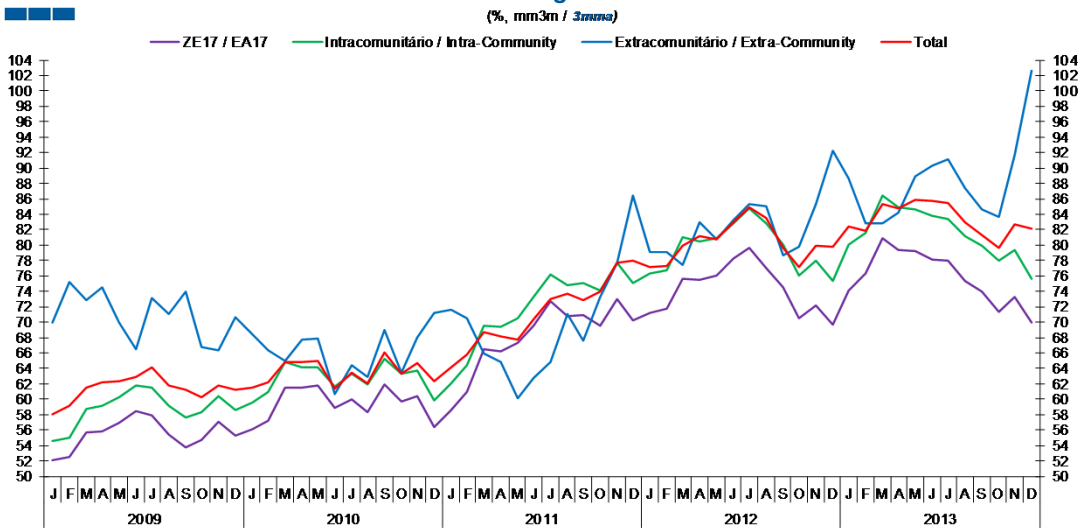
1. Total

Gráfico / Graph 1.1.
 Importações e Exportações
 Imports and Exports



	2012												2013											
	J	F	M	A	M	J	J	A	S	O	N	D	J	F	M	A	M	J	J	A	S	O	N	D
Exportações / Exports	11.1	9.6	11.2	7.7	6.0	6.1	7.4	9.1	3.6	3.5	0.1	1.7	2.0	0.9	0.1	2.6	5.3	6.2	4.0	2.2	5.8	4.7	6.9	6.4
Importações / Imports	-7.6	-6.8	-4.5	-9.5	-11.2	-10.0	-7.6	-3.7	-5.2	-0.8	-2.7	-0.6	-4.5	-4.8	-6.2	-1.7	-0.9	2.8	3.2	3.0	3.6	1.5	3.4	3.3

Gráfico / Graph 1.2.
 Taxa de Cobertura
 Coverage Rate

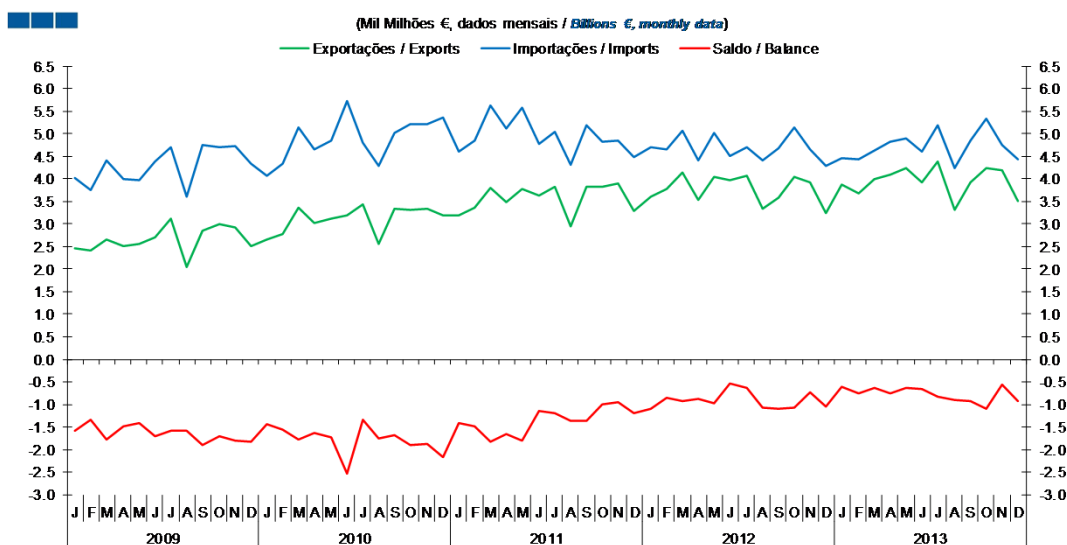


Fonte / Source: INE

	2012												2013											
	J	F	M	A	M	J	J	A	S	O	N	D	J	F	M	A	M	J	J	A	S	O	N	D
ZE 17 / EA 17	71.2	71.8	75.6	75.5	76.0	78.2	79.6	77.0	74.6	70.5	72.1	69.6	74.1	76.3	80.9	79.4	79.3	78.2	78.0	75.4	73.9	71.4	73.2	70.0
Intracomunitário / Intra-community	76.3	76.7	81.0	80.5	80.8	82.8	84.7	82.9	80.1	76.0	78.0	75.4	80.0	81.6	86.4	84.9	84.7	83.8	83.4	81.1	80.0	77.9	79.4	75.6
Extracomunitário / Extra-community	79.1	79.1	77.4	83.0	80.8	83.3	85.3	85.1	78.7	79.8	85.3	92.3	88.7	82.8	82.9	84.2	88.9	90.4	91.1	87.4	84.7	83.6	91.7	102.6
Total	77.1	77.3	80.0	81.1	80.8	82.9	84.9	83.5	79.7	77.1	79.9	79.8	82.3	81.9	85.4	84.7	85.9	85.7	85.5	82.9	81.4	79.6	82.6	82.2

1. Total

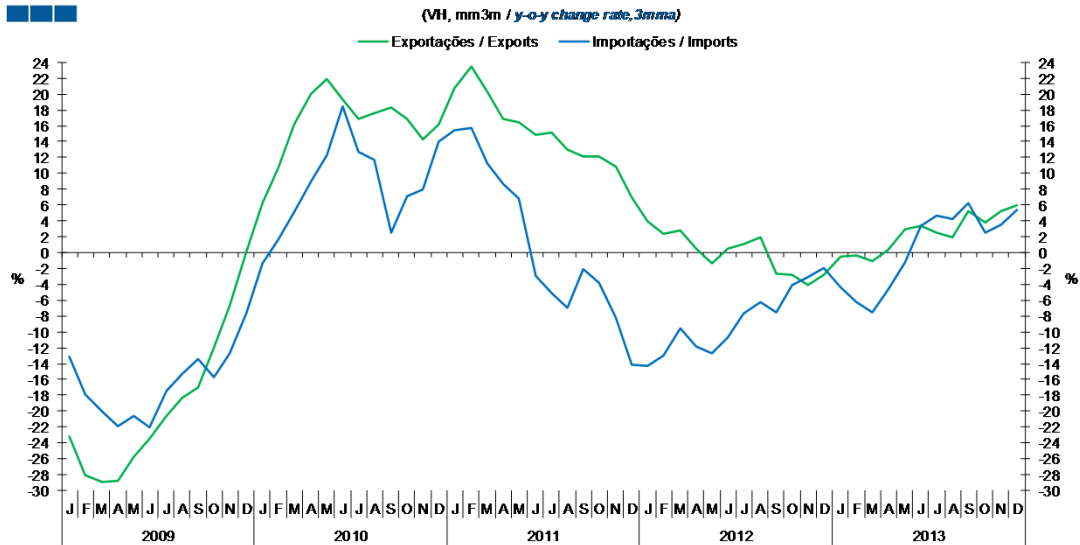
Gráfico / Graph 1.3.
Saldo
Balance



	2012												2013											
	J	F	M	A	M	J	J	A	S	O	N	D	J	F	M	A	M	J	J	A	S	O	N	D
Exportações / Exports	3.6	3.8	4.1	3.5	4.0	4.0	4.1	3.3	3.6	4.0	3.9	3.2	3.9	3.7	4.0	4.1	4.2	3.9	4.4	3.3	3.9	4.2	4.2	3.5
Importações / Imports	4.7	4.6	5.1	4.4	5.0	4.5	4.7	4.4	4.7	5.1	4.6	4.3	4.5	4.4	4.6	4.8	4.9	4.6	5.2	4.2	4.9	5.3	4.7	4.4
Saldo / Balance	-1.1	-0.9	-0.9	-0.9	-1.0	-0.5	-0.6	-1.1	-1.1	-1.1	-0.7	-1.0	-0.6	-0.7	-0.6	-0.7	-0.6	-0.7	-0.8	-0.9	-0.9	-1.1	-0.6	-0.9

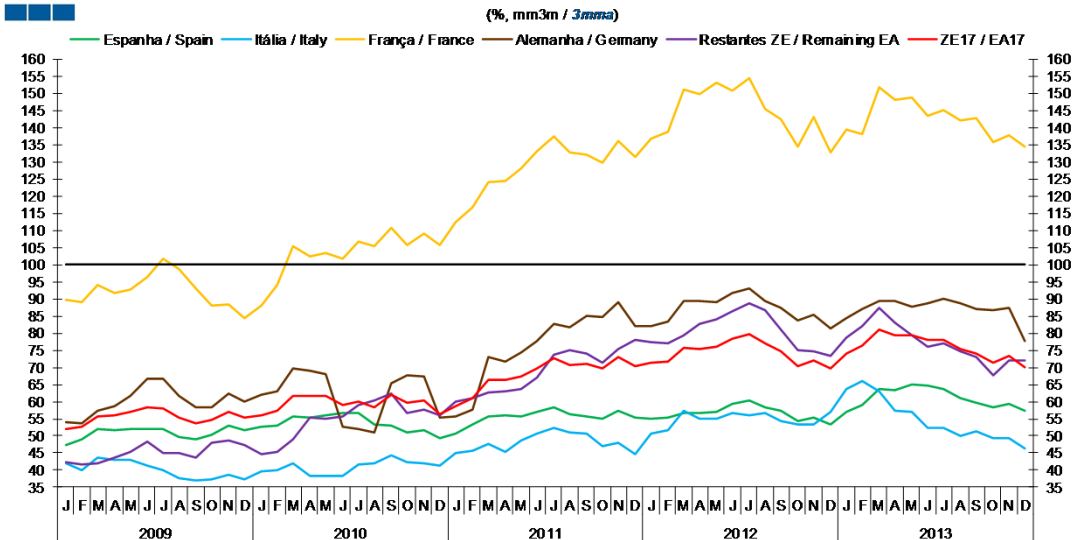
2. Zona Euro-17 / Euro Area-17

Gráfico / Graph 2.1.
 Importações e Exportações
 Imports and Exports



	2012												2013											
	J	F	M	A	M	J	J	A	S	O	N	D	J	F	M	A	M	J	J	A	S	O	N	D
Exportações / Exports	4.0	2.4	2.8	0.5	-1.4	0.4	1.1	2.0	-2.7	-2.8	-4.1	-2.8	-0.5	-0.4	-1.0	0.3	2.9	3.3	2.6	2.0	5.3	3.7	5.2	5.9
Importações / Imports	-14.3	-13.0	-9.6	-11.8	-12.7	-10.6	-7.7	-6.2	-7.5	-4.1	-3.0	-1.9	-4.3	-6.2	-7.5	-4.6	-1.3	3.4	4.6	4.2	6.2	2.5	3.6	5.4

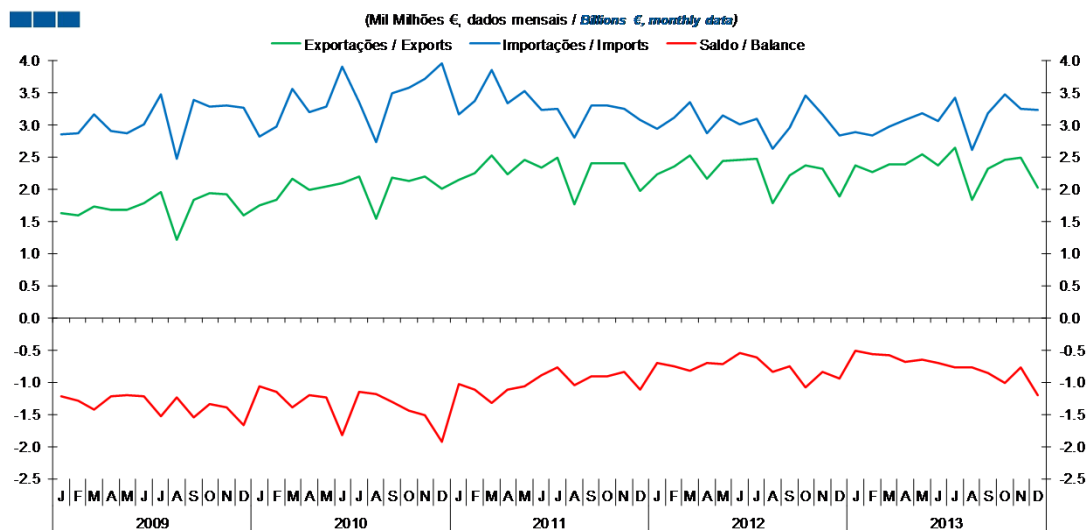
Gráfico / Graph 2.2.
 Taxa de Cobertura
 Coverage Rate



	2012												2013											
	J	F	M	A	M	J	J	A	S	O	N	D	J	F	M	A	M	J	J	A	S	O	N	D
Espanha / Spain	54.9	55.3	56.8	56.7	57.0	59.4	60.4	58.5	57.3	54.5	55.4	53.4	57.0	59.0	63.6	63.4	64.9	64.8	63.8	61.1	59.6	58.2	59.3	57.2
Itália / Italy	50.8	51.7	57.4	55.0	55.1	56.6	55.9	56.6	54.2	53.3	53.2	57.1	63.6	65.9	63.0	57.5	57.0	52.4	52.4	50.0	51.4	49.3	49.4	46.3
França / France	136.8	138.7	151.1	149.7	153.3	150.8	154.6	145.4	142.5	134.5	143.1	132.7	139.5	138.2	151.9	148.2	148.7	143.5	145.1	142.2	142.7	135.9	137.8	134.6
Alemanha / Germany	82.1	83.4	89.5	89.3	89.0	91.8	92.9	89.5	87.5	83.5	85.4	81.2	84.3	87.0	89.5	89.5	87.6	88.8	90.0	88.8	86.9	86.7	87.5	77.6
Restantes ZE / Remaining EA	77.2	76.9	79.3	82.8	84.1	86.2	88.7	86.6	81.0	74.9	74.7	73.5	78.6	82.1	87.2	83.1	79.4	76.0	77.0	74.6	72.9	67.6	72.0	71.9
ZE 17 / EA 17	71.2	71.8	75.6	75.5	76.0	78.2	79.6	77.0	74.6	70.5	72.1	69.6	74.1	76.3	80.9	79.4	79.3	78.2	78.0	75.4	73.9	71.4	73.2	70.0

2. Zona Euro-17 / Euro Area-17

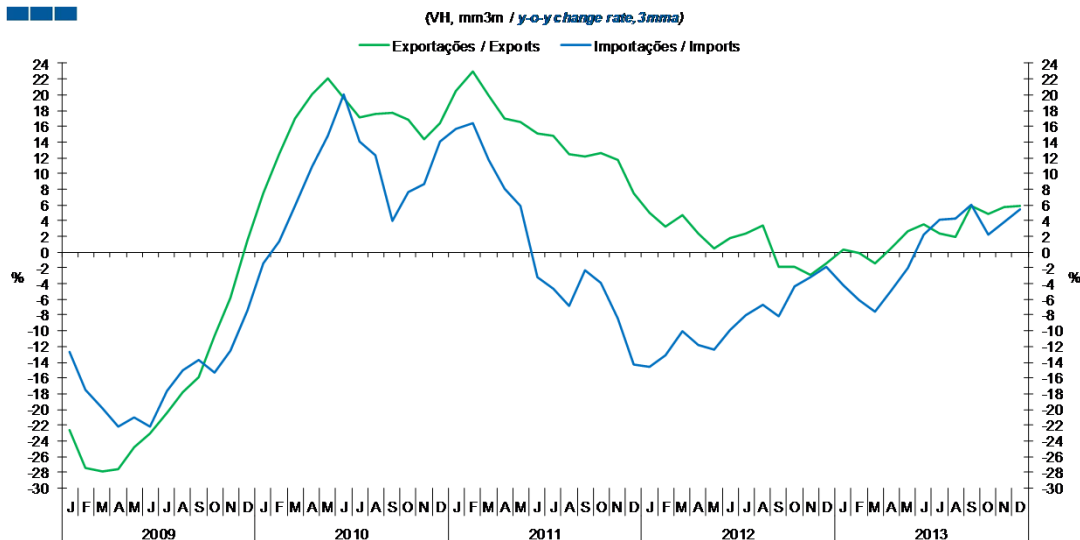
Gráfico / Graph 2.3.
Saldo
Balance



	2012												2013											
	J	F	M	A	M	J	J	A	S	O	N	D	J	F	M	A	M	J	J	A	S	O	N	D
Exportações / Exports	2.2	2.4	2.5	2.2	2.4	2.5	2.5	1.8	2.2	2.4	2.3	1.9	2.4	2.3	2.4	2.4	2.5	2.4	2.6	1.8	2.3	2.5	2.5	2.0
Importações / Imports	2.9	3.1	3.3	2.9	3.1	3.0	3.1	2.6	3.0	3.4	3.2	2.8	2.9	2.8	3.0	3.1	3.2	3.1	3.4	2.6	3.2	3.5	3.3	3.2
Saldo / Balance	-0.7	-0.8	-0.8	-0.7	-0.7	-0.6	-0.6	-0.8	-0.8	-1.1	-0.8	-1.0	-0.5	-0.6	-0.6	-0.7	-0.7	-0.7	-0.8	-0.8	-0.9	-1.0	-0.8	-1.2

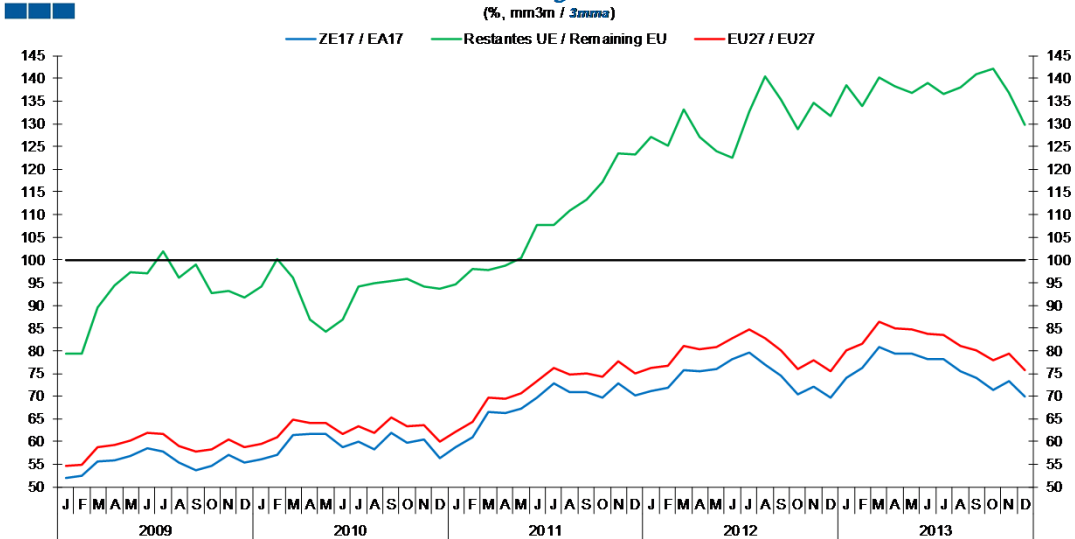
3. Intracomunitário / Intra-Community

Gráfico / Graph 3.1.
 Importações e Exportações
 Imports and Exports



	2012												2013											
	J	F	M	A	M	J	J	A	S	O	N	D	J	F	M	A	M	J	J	A	S	O	N	D
Exportações / Exports	5.0	3.3	4.7	2.3	0.5	1.8	2.3	3.4	-1.9	-1.9	-2.9	-1.4	0.3	-0.1	-1.5	0.4	2.6	3.5	2.4	2.0	5.9	4.8	5.7	5.8
Importações / Imports	-14.6	-13.2	-10.1	-11.8	-12.4	-9.9	-8.0	-6.7	-8.1	-4.3	-3.2	-1.8	-4.3	-6.1	-7.6	-4.9	-2.0	2.3	4.1	4.2	6.1	2.3	3.9	5.5

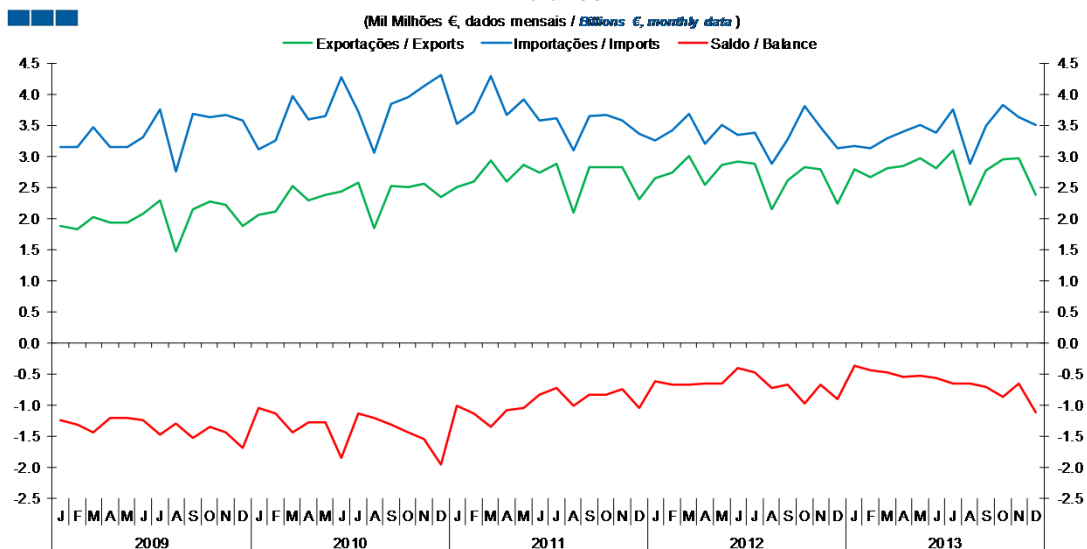
Gráfico / Graph 3.2.
 Taxa de Cobertura
 Coverage Rate



	2012												2013											
	J	F	M	A	M	J	J	A	S	O	N	D	J	F	M	A	M	J	J	A	S	O	N	D
ZE 17 / EA 17	71.2	71.8	75.6	75.5	76	78.2	79.6	77	74.6	70.5	72.1	69.6	74.1	76.3	80.9	79.4	79.3	78.2	78	75.4	73.9	71.4	73.2	70
UE 27 / EU 27	76.3	76.7	81	80.5	80.8	82.8	84.7	82.9	80.1	76	78	75.4	80	81.6	86.4	84.9	84.7	83.8	83.4	81.1	80	77.9	79.4	75.6
Restantes UE / Remaining EU	127.1	125.2	133.2	127.1	123.9	122.5	132.8	140.4	135.3	128.9	134.7	131.8	138.6	133.9	140.1	138.3	136.9	138.9	136.7	137.9	141.0	142.1	136.9	129.8

3. Intracomunitário / Intra-Community

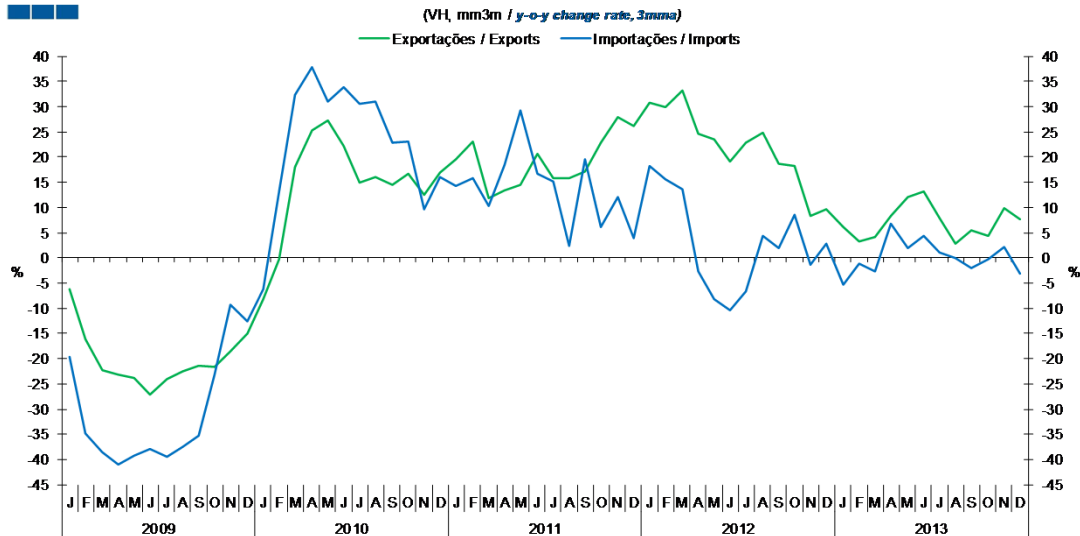
Gráfico / Graph 3.3.
 Saldo
 Balance



	2012												2013											
	J	F	M	A	M	J	J	A	S	O	N	D	J	F	M	A	M	J	J	A	S	O	N	D
Exportações / Exports	2.6	2.7	3.0	2.5	2.9	2.9	2.9	2.1	2.6	2.8	2.8	2.2	2.8	2.7	2.8	2.8	3.0	2.8	3.1	2.2	2.8	2.9	3.0	2.4
Importações / Imports	3.3	3.4	3.7	3.2	3.5	3.3	3.4	2.9	3.3	3.8	3.5	3.1	3.2	3.1	3.3	3.4	3.5	3.4	3.7	2.9	3.5	3.8	3.6	3.5
Saldo / Balance	-0.6	-0.7	-0.7	-0.7	-0.7	-0.4	-0.5	-0.7	-0.7	-1.0	-0.7	-0.9	-0.4	-0.5	-0.5	-0.6	-0.5	-0.6	-0.7	-0.7	-0.7	-0.9	-0.7	-1.1

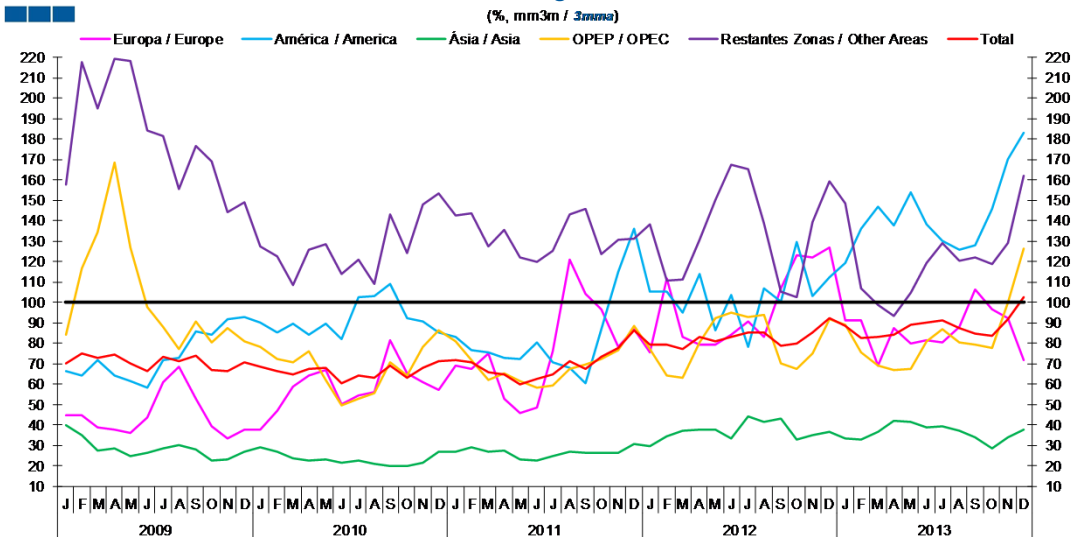
4. Extracomunitário / Extra-Community

Gráfico / Graph 4.1.
 Importações e Exportações
 Imports and Exports



	2012												2013											
	J	F	M	A	M	J	J	A	S	O	N	D	J	F	M	A	M	J	J	A	S	O	N	D
Exportações / Exports	30.8	29.8	33.2	24.7	23.5	19.1	22.8	24.9	18.7	18.2	8.3	9.7	6.2	3.3	4.2	8.3	12.1	13.1	7.9	2.8	5.5	4.4	9.8	7.7
Importações / Imports	18.3	15.6	13.6	-2.6	-8.1	-10.3	-6.7	4.4	2.0	8.6	-1.3	2.8	-5.3	-1.2	-2.7	6.8	1.9	4.3	1.1	0.1	-1.9	-0.3	2.2	-3.1

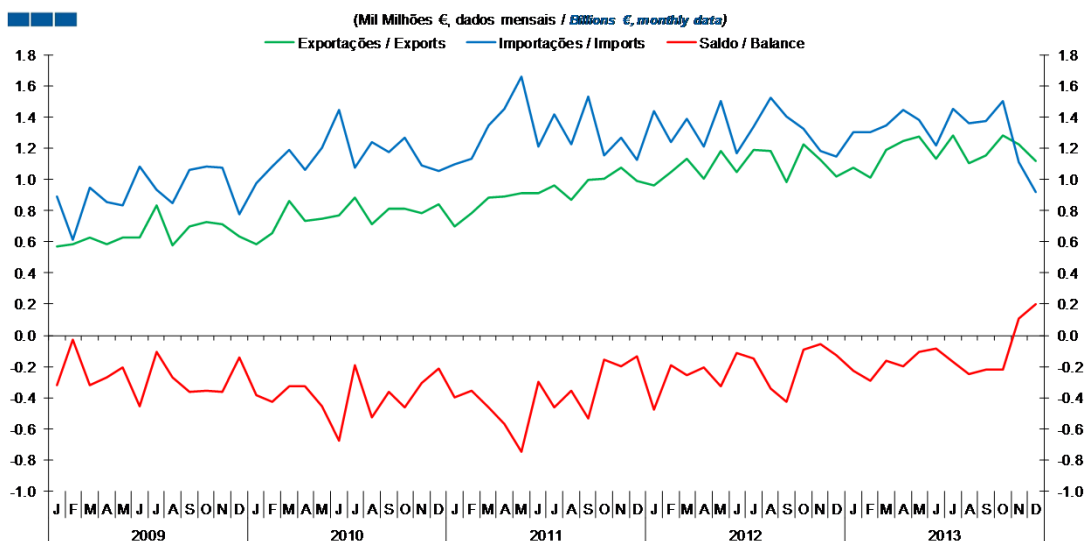
Gráfico / Graph 4.2.
 Taxa de Cobertura
 Coverage Rate



	2012												2013											
	J	F	M	A	M	J	J	A	S	O	N	D	J	F	M	A	M	J	J	A	S	O	N	D
Europa / Europe	75.8	112.0	83.1	79.3	79.5	84.2	90.7	83.1	106.8	123.1	122.0	126.6	91.4	91.1	69.2	87.5	79.7	81.3	80.4	88.2	106.6	96.5	92.2	71.6
América / America	105.0	105.5	95.2	114.0	86.3	103.5	78.3	106.9	100.6	129.4	103.0	112.0	119.5	135.9	146.6	137.8	153.9	138.0	130.0	125.5	127.8	145.7	170.1	183.3
Ásia / Asia	29.7	34.4	37.4	38.0	38.0	33.5	44.0	41.5	43.4	33.1	35.2	36.5	33.4	33.1	36.9	42.0	41.3	38.6	39.3	37.0	33.7	28.7	34.2	37.7
OPEP / OPEC	77.2	64.1	63.1	80.3	92.3	94.9	92.9	94.1	70.1	67.7	74.7	91.9	89.1	75.3	69.0	67.0	67.6	81.2	86.8	80.3	79.4	77.6	100.0	126.6
Restantes Zonas / Other Areas	138.0	110.6	111.2	130.8	150.1	167.4	165.2	138.9	105.4	102.4	139.4	159.1	148.7	106.9	98.7	93.3	104.9	119.1	129.2	120.3	122.0	118.9	129.0	162.1
Total	79.1	79.1	77.4	83.0	80.8	83.3	85.3	85.1	78.7	79.8	85.3	92.3	88.7	82.8	82.9	84.2	88.9	90.4	91.1	87.4	84.7	83.6	91.7	102.6

4. Extracomunitário / Extra-Community

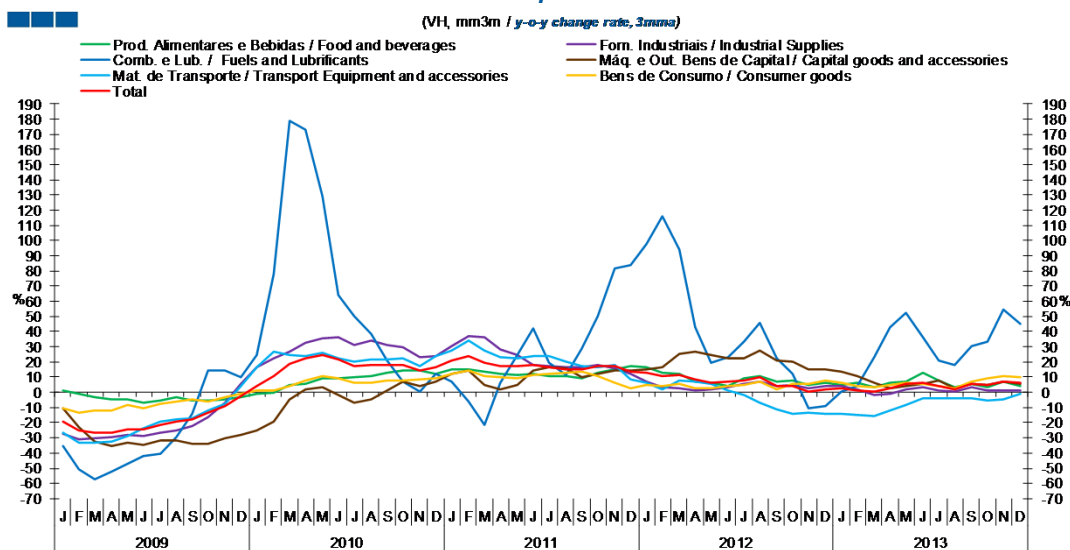
Gráfico / Graph 4.3.
Saldo
Balance



	2012												2013											
	J	F	M	A	M	J	J	A	S	O	N	D	J	F	M	A	M	J	J	A	S	O	N	D
Exportações / Exports	1.0	1.0	1.1	1.0	1.2	1.0	1.2	1.2	1.0	1.2	1.1	1.0	1.1	1.0	1.2	1.2	1.3	1.1	1.3	1.1	1.2	1.3	1.2	1.1
Importações / Imports	1.4	1.2	1.4	1.2	1.5	1.2	1.3	1.5	1.4	1.3	1.2	1.1	1.3	1.3	1.3	1.4	1.4	1.2	1.4	1.4	1.4	1.5	1.1	0.9
Saldo / Balance	-0.5	-0.2	-0.3	-0.2	-0.3	-0.1	-0.1	-0.3	-0.4	-0.1	-0.1	-0.1	-0.2	-0.3	-0.2	-0.2	-0.1	-0.1	-0.2	-0.3	-0.2	-0.2	0.1	0.2

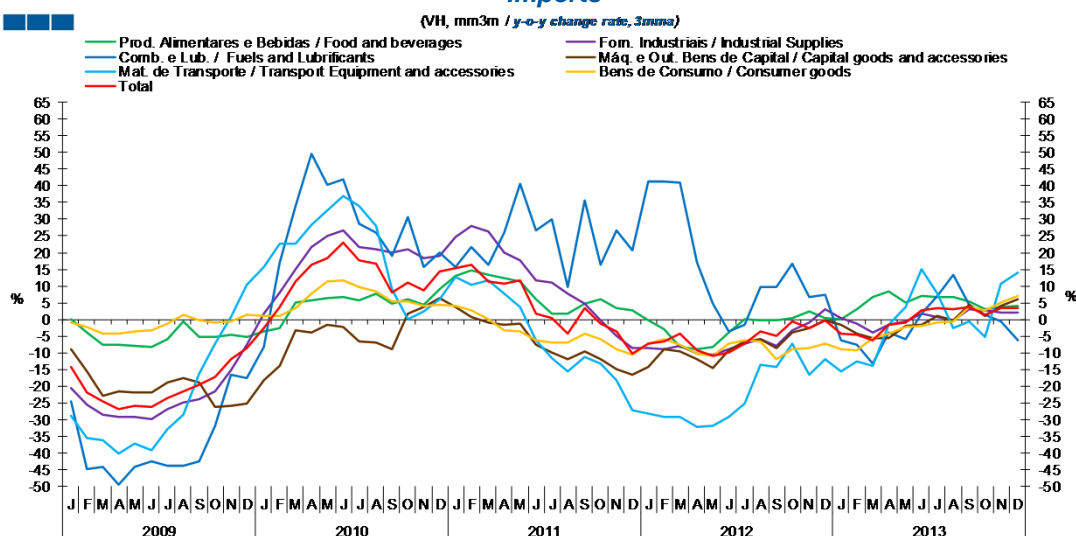
5. Grandes Categorias Económicas / Broad Economic Categories

Gráfico / Graph 5.1.
Exportações
Exports



	2012												2013											
	J	F	M	A	M	J	J	A	S	O	N	D	J	F	M	A	M	J	J	A	S	O	N	D
Produtos Alimentares e Bebidas / Food and Beverages	16.8	13.0	12.3	6.9	6.4	4.2	9.0	10.6	7.1	7.6	4.6	5.9	4.8	6.2	3.5	6.4	7.3	12.8	8.0	3.3	5.2	3.4	7.2	4.1
Comb. e Lub. / Fuels and Lubricants	97.5	115.8	94.0	42.7	19.3	23.2	33.2	45.6	22.4	12.2	-10.5	-8.8	0.8	4.3	23.0	42.6	52.1	36.3	20.7	18.2	30.2	33.5	54.2	44.8
Mat. de Transporte / Transport equipment and accessories	6.4	1.9	7.8	6.8	5.2	0.9	-1.5	-7.1	-11.6	-14.3	-13.7	-14.4	-13.9	-14.9	-15.9	-12.3	-8.4	-3.7	-3.6	-4.0	-3.6	-5.7	-4.8	-1.2
Forn. Industriais / Industrial Supplies	7.2	3.3	2.7	1.5	1.7	3.6	5.3	6.7	3.8	4.7	2.4	4.3	4.3	1.9	-1.4	-1.0	1.6	3.3	1.3	0.1	3.2	0.8	1.4	1.1
Máq. e Out. Bens de Capital / Capital Goods and Accessories	14.9	16.6	25.4	26.8	24.4	22.3	22.6	27.7	21.1	20.3	15.1	15.3	13.3	10.5	6.5	2.8	4.0	5.4	8.1	2.5	5.7	4.6	7.3	5.7
Bens de Consumo / Consumer Goods	4.5	4.2	5.8	2.5	2.8	4.1	4.5	6.7	1.6	5.6	5.3	8.0	6.3	4.1	3.2	5.1	6.6	5.4	3.9	2.3	7.0	8.9	10.9	9.7
Total	12.6	10.7	11.7	8.2	6.6	6.6	7.9	9.6	4.2	4.1	0.6	2.2	2.3	1.0	0.1	2.6	5.3	6.2	4.0	2.2	5.8	4.7	6.9	6.4

Gráfico / Graph 5.2.
Importações
Imports



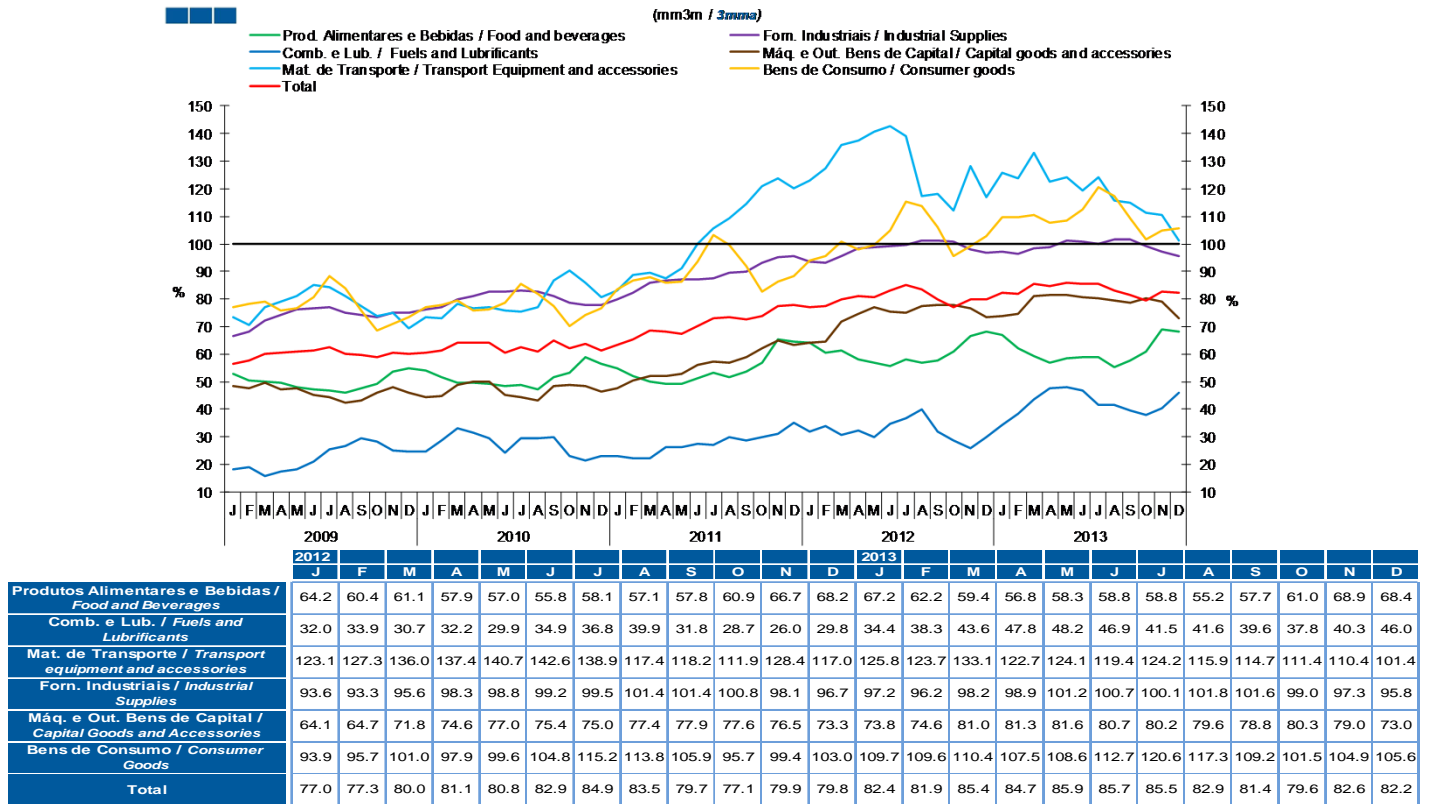
	2012												2013											
	J	F	M	A	M	J	J	A	S	O	N	D	J	F	M	A	M	J	J	A	S	O	N	D
Produtos Alimentares e Bebidas / Food and Beverages	-0.2	-2.9	-8.4	-9.0	-8.1	-4.1	0.0	-0.2	-0.3	0.6	2.3	0.4	0.2	3.1	6.6	8.5	4.9	7.0	6.7	6.8	5.4	3.2	3.7	3.9
Comb. e Lub. / Fuels and Lubricants	41.2	41.4	41.0	17.0	4.8	-3.5	-1.5	9.7	9.9	16.6	6.6	7.4	-6.3	-7.5	-13.3	-3.8	-5.8	1.6	7.0	13.2	4.4	1.5	-0.5	-6.2
Mat. de Transporte / Transport equipment and accessories	-28.1	-29.1	-29.0	-32.0	-31.9	-29.3	-25.1	-13.4	-14.3	-7.3	-16.7	-12.0	-15.7	-12.5	-14.0	-1.7	3.8	15.0	7.8	-2.7	-0.7	-5.3	10.8	14.0
Forn. Industriais / Industrial Supplies	-8.6	-8.8	-7.9	-10.4	-10.4	-8.9	-7.3	-5.9	-7.7	-3.3	-0.8	3.1	0.5	-1.1	-4.0	-1.6	-0.7	1.8	0.7	-0.3	3.0	2.7	2.2	2.0
Máq. e Out. Bens de Capital / Capital Goods and Accessories	-14.4	-8.9	-9.4	-11.8	-14.5	-9.3	-6.5	-6.0	-8.7	-3.8	-2.5	-0.3	-1.5	-4.1	-5.5	-5.6	-1.9	-1.6	1.0	-0.3	4.5	1.1	3.9	6.1
Bens de Consumo / Consumer Goods	-7.2	-5.8	-7.7	-10.1	-10.7	-7.2	-6.2	-6.6	-11.8	-8.8	-8.7	-7.4	-9.0	-9.1	-5.7	-4.3	-2.3	-2.0	-0.8	-0.8	3.8	2.7	5.1	7.0
Total	-7.3	-6.5	-4.3	-9.2	-11.0	-9.8	-7.4	-3.5	-5.0	-0.5	-2.4	-0.4	-4.4	-4.7	-6.2	-1.7	-0.9	2.8	3.2	3.0	3.6	1.5	3.4	3.3

Nota: Não inclui Bens N.E. Noutra Categoria devido ao seu reduzido valor relativo e elevada variabilidade.

Note: Does not include Goods Not Elsewhere Specified because of its small relative value and high variability

5. Grandes Categorias Económicas / Broad Economic Categories

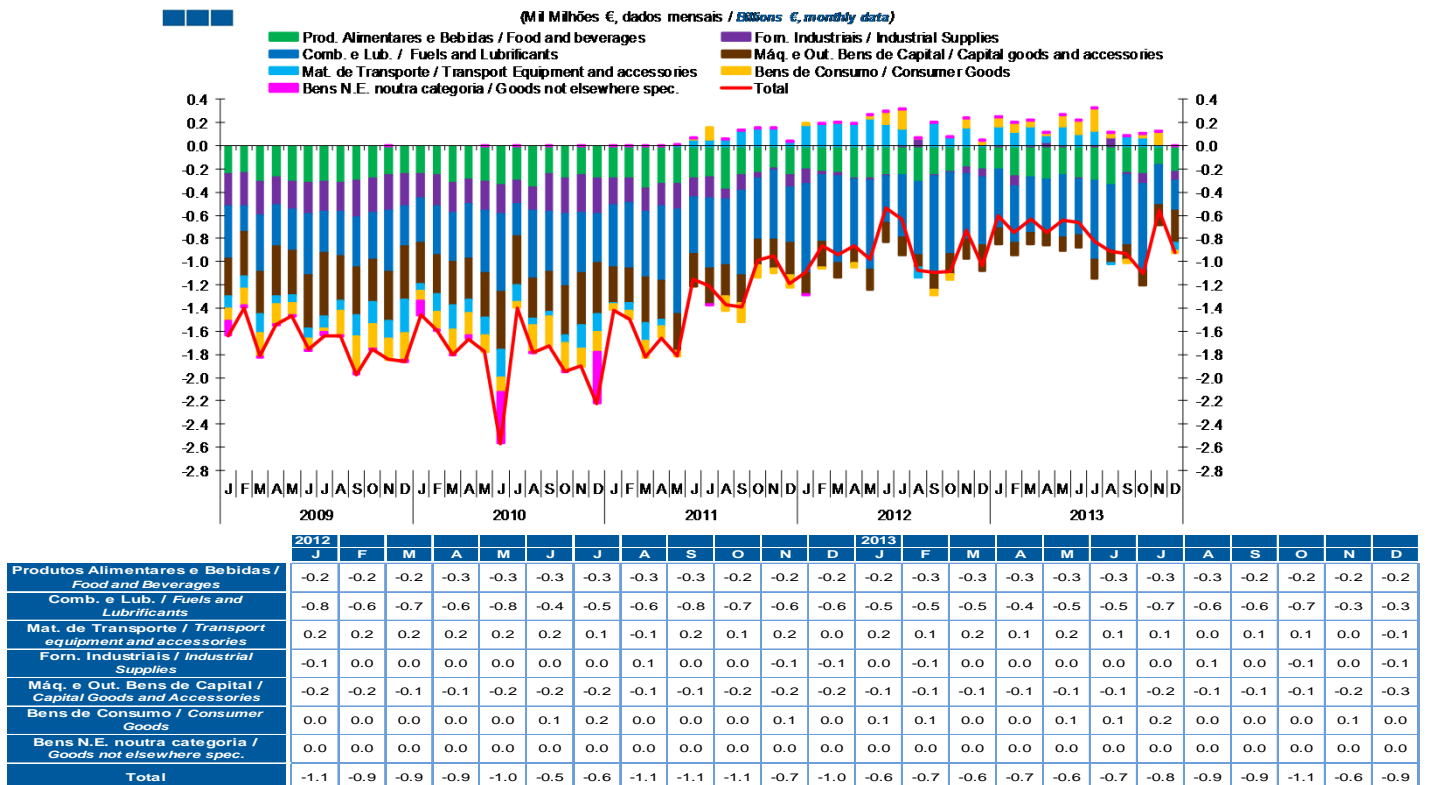
Gráfico / Graph 5.3.
Taxa de Cobertura
Coverage Rate



Nota: Não inclui Bens N.E. Outra Categoria devido ao seu reduzido valor relativo e elevada variabilidade.

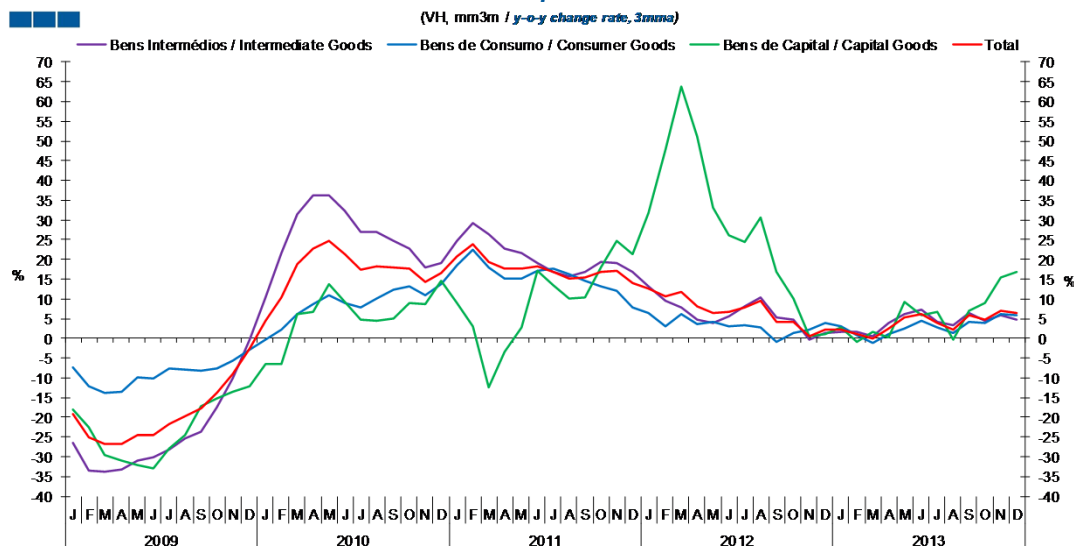
Note: Does not include Goods Not Elsewhere Specified because of its small relative value and high variability

Gráfico / Graph 5.4.
Saldo
Balance



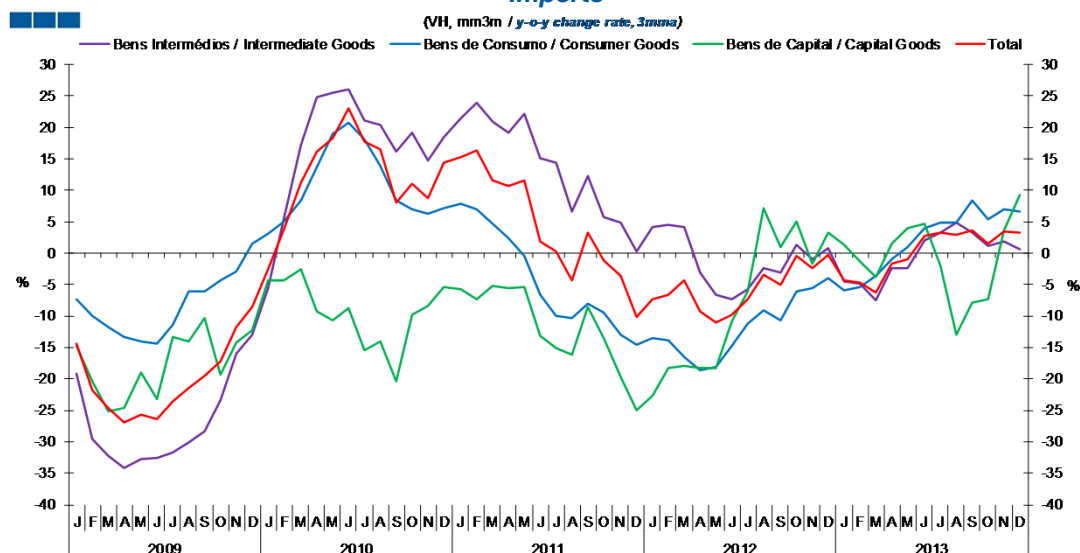
6. Classes Básicas de Bens do Sistema Europeu de Contas Nacionais / Basic Classes of Goods in the European System of Accounts

Gráfico / Graph 6.1.
Exportações
Exports



	2012												2013											
	J	F	M	A	M	J	J	A	S	O	N	D	J	F	M	A	M	J	J	A	S	O	N	D
Bens Intermediários / Intermediate Goods	13.2	9.7	7.9	4.7	3.9	5.5	8.0	10.5	5.4	4.6	-0.4	1.3	1.7	1.5	0.5	3.8	6.1	7.2	4.1	3.2	6.6	4.4	5.8	4.7
Bens de Consumo / Consumer Goods	6.4	3.1	6.2	3.7	4.1	3.1	3.3	2.8	-1.0	1.4	2.3	3.9	3.0	0.8	-1.2	1.1	2.4	4.6	2.8	1.4	4.1	3.8	6.1	5.9
Bens de Capital / Capital Goods	31.7	47.6	63.9	51.0	33.1	26.0	24.4	30.7	16.9	10.1	0.5	1.1	2.8	-0.8	1.5	0.4	9.3	5.8	6.6	-0.3	6.9	9.0	15.5	16.8
Total	12.6	10.7	11.7	8.2	6.6	6.6	7.9	9.6	4.2	4.1	0.6	2.2	2.3	1.0	0.1	2.6	5.3	6.2	4.0	2.2	5.8	4.7	6.9	6.4

Gráfico / Graph 6.2.
Importações
Imports



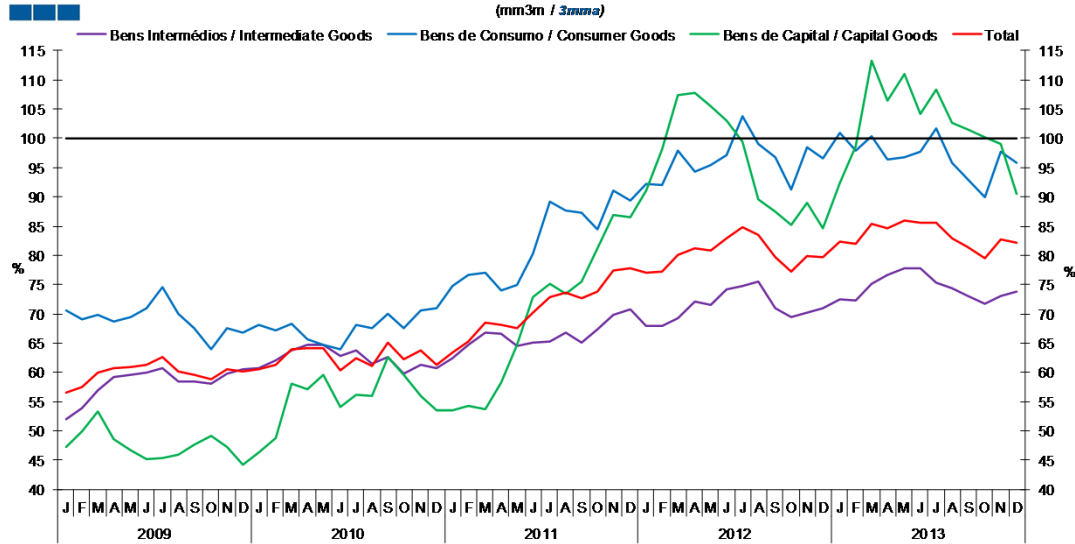
	2012												2013											
	J	F	M	A	M	J	J	A	S	O	N	D	J	F	M	A	M	J	J	A	S	O	N	D
Bens Intermediários / Intermediate Goods	4.1	4.5	4.2	-3.1	-6.6	-7.4	-5.8	-2.4	-3.2	1.4	-1.1	0.8	-4.6	-4.8	-7.5	-2.5	-2.4	2.1	3.3	4.8	3.3	1.1	1.8	0.7
Bens de Consumo / Consumer Goods	-13.6	-13.9	-16.5	-18.7	-18.2	-14.8	-11.2	-9.1	-10.7	-6.1	-5.5	-3.9	-5.9	-5.5	-3.7	-1.0	1.0	4.1	4.9	4.8	8.4	5.3	7.0	6.7
Bens de Capital / Capital Goods	-22.7	-18.4	-18.0	-18.3	-18.3	-10.9	-6.1	7.2	1.0	5.0	-1.7	3.3	1.3	-1.4	-3.8	1.6	3.9	4.7	-2.1	-13.0	-7.9	-7.3	3.6	9.3
Total	-7.3	-6.5	-4.3	-9.2	-11.0	-9.8	-7.4	-3.5	-5.0	-0.5	-2.4	-0.4	-4.4	-4.7	-6.2	-1.7	-0.9	2.8	3.2	3.0	3.6	1.5	3.4	3.3

Nota: Não inclui a série Outros Bens devido ao seu baixo valor relativo e elevada variabilidade.

Note: Does not include Other Goods because of its small relative value and high variability.

6. Classes Básicas de Bens do Sistema Europeu de Contas Nacionais / Basic Classes of Goods in the European System of Accounts

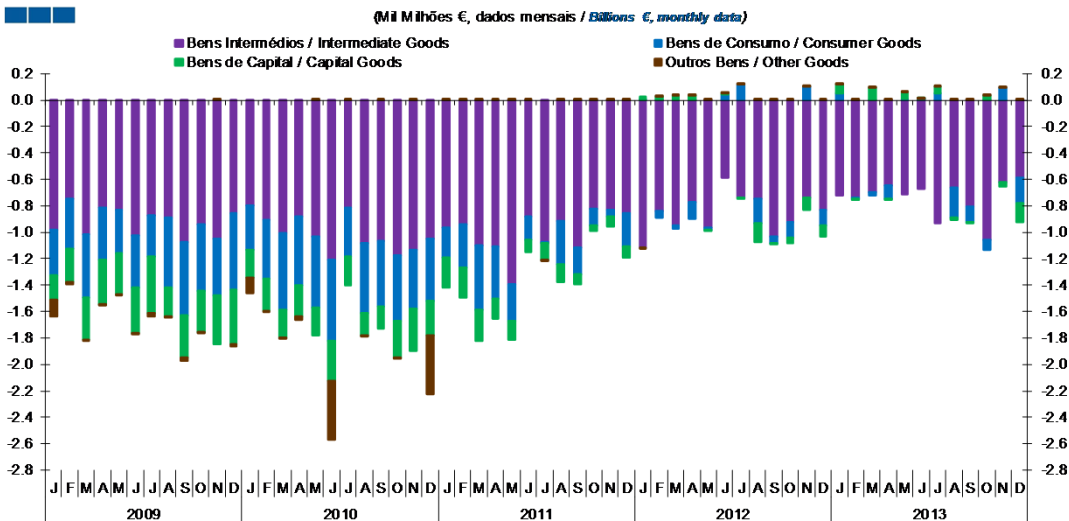
Gráfico / Graph 6.3.
 Taxa de Cobertura
 Coverage Rate



	2012												2013											
	J	F	M	A	M	J	J	A	S	O	N	D	J	F	M	A	M	J	J	A	S	O	N	D
Bens Intermediários / Intermediate Goods	67.9	67.8	69.2	72.0	71.6	74.1	74.8	75.5	70.9	69.5	70.2	71.0	72.4	72.4	75.2	76.7	77.8	77.8	75.4	74.3	73.1	71.8	73.0	73.9
Bens de Consumo / Consumer Goods	92.1	91.9	97.9	94.4	95.4	97.2	103.7	99.0	96.8	91.2	98.5	96.7	100.9	98.0	100.4	96.3	96.8	97.7	101.7	95.8	92.9	89.9	97.7	95.9
Bens de Capital / Capital Goods	91.0	98.1	107.4	107.7	105.5	103.1	99.5	89.6	87.4	85.2	88.9	84.6	92.4	98.7	113.3	106.5	110.9	104.1	108.4	102.6	101.5	100.2	99.1	90.4
Total	77.0	77.3	80.0	81.1	80.8	82.9	84.9	83.5	79.7	77.1	79.9	79.8	82.4	81.9	85.4	84.7	85.9	85.7	85.5	82.9	81.4	79.6	82.6	82.2

Nota: Não inclui a série Outros Bens devido ao seu baixo valor relativo e elevada variabilidade.
 Note: Does not include Other Goods because of its small relative value and high variability.

Gráfico / Graph 6.4.
 Saldo de Bens
 Balance of Goods



	2012												2013											
	J	F	M	A	M	J	J	A	S	O	N	D	J	F	M	A	M	J	J	A	S	O	N	D
Bens Intermediários / Intermediate Goods	-1.1	-0.8	-0.9	-0.8	-1.0	-0.6	-0.7	-0.7	-1.0	-0.9	-0.7	-0.8	-0.7	-0.7	-0.7	-0.6	-0.7	-0.7	-0.9	-0.7	-0.8	-1.1	-0.6	-0.6
Bens de Consumo / Consumer Goods	0.0	-0.1	0.0	-0.1	0.0	0.0	0.1	-0.2	0.0	-0.1	0.1	-0.1	0.1	0.0	0.0	-0.1	0.0	0.1	-0.2	-0.1	-0.1	0.1	-0.2	
Bens de Capital / Capital Goods	0.0	0.0	0.0	0.0	0.0	0.0	0.0	-0.1	0.0	0.0	-0.1	-0.1	0.1	0.0	0.1	0.0	0.1	0.0	0.0	0.0	0.0	0.0	0.0	-0.1
Outros Bens / Other Goods	0.0	0.0	0.0	0.0	0.0	0.0	0.0	0.0	0.0	0.0	0.0	0.0	0.0	0.0	0.0	0.0	0.0	0.0	0.0	0.0	0.0	0.0	0.0	0.0
Total	-1.1	-0.9	-0.9	-0.9	-1.0	-0.5	-0.6	-1.1	-1.1	-1.1	-0.7	-1.0	-0.6	-0.7	-0.6	-0.7	-0.6	-0.7	-0.8	-0.9	-0.9	-1.1	-0.6	-0.9

6. Classes Básicas de Bens do Sistema Europeu de Contas Nacionais / Basic Classes of Goods in the European System of Accounts

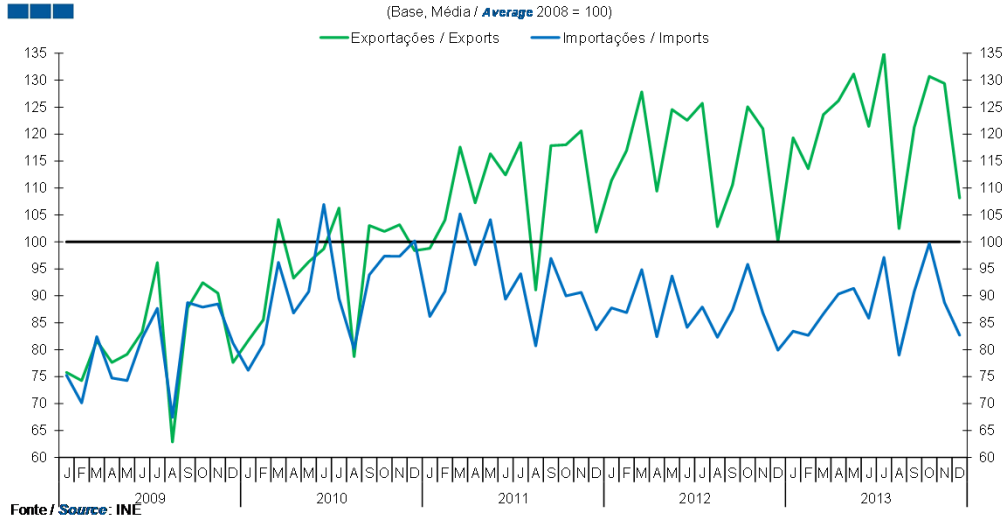
Tabela / Table 1.1.
Estrutura do Saldo
Balance Structure

Milhões de euros \ Millions of euros

		2013																							
		J		F		M		A		M		J		J		A		S		O		N		D	
		M€	%	M€	%	M€	%	M€	%	M€	%	M€	%	M€	%	M€	%	M€	%	M€	%	M€	%	M€	%
Bens Intermedios / Intermediate Goods	Prod. alim. e bebidas / <i>Foods and beverages</i>	-131	22	-147	20	-163	26	-146	19	-104	16	-146	22	-154	19	-142	16	-140	15	-159	14	-141	25	-118	13
	Forn. industriais NE noutra categoria / <i>Industrial supplies NE specified</i>	7	-1	-87	12	9	-1	34	-5	6	-1	-12	2	11	-1	70	-8	-19	2	-88	8	-5	1	-80	9
	Comb. e lubrificantes / <i>Fuel and lubricants</i>	-597	100	-543	73	-581	92	-533	71	-603	94	-511	77	-742	90	-618	68	-651	70	-800	73	-428	77	-315	34
	Máquinas, outros bens de capital (Partes e acessórios) / <i>Capital goods and parts and accessories</i>	-55	9	-48	6	-32	5	-65	9	-66	10	-36	5	-66	8	-36	4	-50	5	-76	7	-60	11	-84	9
	Material de transportes (Partes e acessórios) / <i>Transport equipment (Parts and accessories)</i>	53	-9	87	-12	73	-12	66	-9	58	-9	33	-5	23	-3	65	-7	52	-6	63	-6	11	-2	12	-1
Total		-724	121	-738	99	-693	109	-644	86	-709	110	-672	102	-928	113	-662	73	-807	87	-1,060	96	-622	111	-584	63
Bens de Consumo / Consumption Goods	Prod. alim. e bebidas destinados ao consumo dos particulares / <i>Food and beverages mainly for household consumption</i>	-74	12	-113	15	-113	18	-142	19	-147	23	-133	20	-152	19	-195	21	-93	10	-87	8	-27	5	-109	12
	Material de transporte / <i>Transport equipment</i>	48	-8	30	-4	35	-6	21	-3	57	-9	22	-3	22	-3	-71	8	8	-1	-16	1	9	-2	-67	7
	Bens de consumo NE noutra categoria / <i>Consumption goods NE specified</i>	78	-13	77	-10	47	-7	21	-3	96	-15	117	-18	186	-23	36	-4	-31	3	26	-2	112	-20	-16	2
Total		52	-9	-6	1	-31	5	-100	13	6	-1	6	-1	56	-7	-230	25	-117	13	-77	7	94	-17	-192	21
Bens de Capital / Capital Goods	Carburantes para motor / <i>Motor spirit</i>	89	-15	55	-7	100	-16	87	-12	68	-11	36	-5	64	-8	48	-5	48	-5	55	-5	86	-15	63	-7
	Máquinas, outros bens de capital (exceto material de transporte) / <i>Capital goods (except transport equipment)</i>	-81	14	-63	8	-59	9	-63	8	-56	9	-75	11	-94	11	-70	8	-81	9	-53	5	-110	20	-200	22
	Material de transportes destinado à indústria / <i>Transport equipment, industrial</i>	62	-10	5	-1	49	-8	-31	4	46	-7	42	-6	77	-9	4	0	22	-2	30	-3	-9	2	-10	1
Total		70	-12	-3	0	90	-14	-6	1	58	-9	3	0	48	-6	-18	2	-11	1	32	-3	-33	6	-147	16
Outros / Others		1	0	2	0	1	0	3	0	2	0	1	0	2	0	2	0	3	0	2	0	3	-1	2	0
Total		-600	100	-745	100	-634	100	-747	100	-643	100	-662	100	-823	100	-908	100	-932	100	-1,103	100	-558	100	-922	100

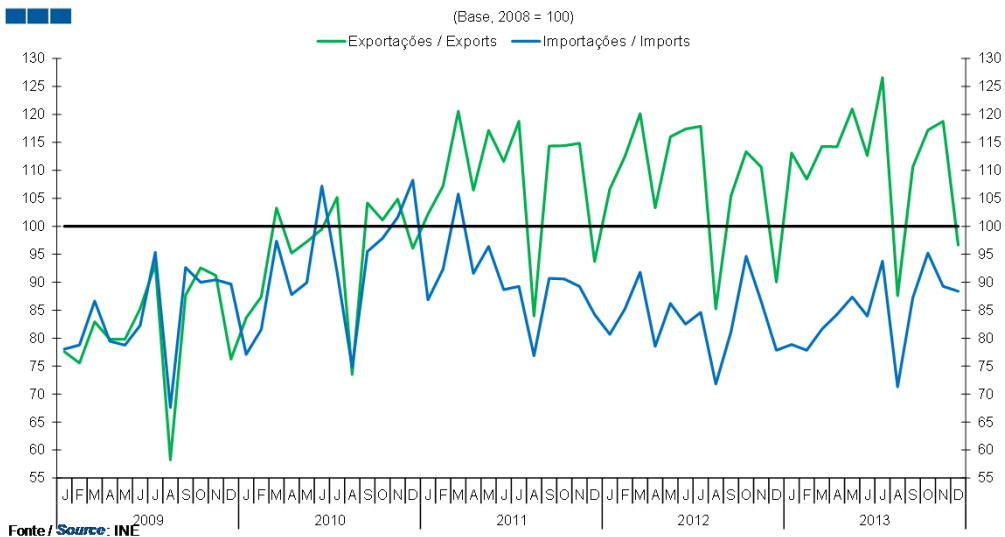
7. Índice GEE de Comércio Internacional de Bens / *GEE Index of International Trade of Goods*

Gráfico / Graph 7.1.
 Total



	2012												2013											
	J	F	M	A	M	J	J	A	S	O	N	D	J	F	M	A	M	J	J	A	S	O	N	D
Exportações / Exports	111.4	117.0	127.8	109.4	124.6	122.6	125.7	102.8	110.6	125.1	121.0	100.1	119.3	113.6	123.6	126.2	131.1	121.4	135.1	102.5	121.2	130.7	129.4	108.2
Importações / Imports	87.8	86.9	94.9	82.4	93.7	84.1	87.9	82.3	87.4	95.8	86.8	79.9	83.4	82.7	86.7	90.3	91.4	85.8	97.1	79.0	90.8	99.7	88.7	82.7

Gráfico / Graph 7.2.
 Zona Euro
 Euro Area



	2012												2013											
	J	F	M	A	M	J	J	A	S	O	N	D	J	F	M	A	M	J	J	A	S	O	N	D
Exportações / Exports	106.6	112.5	120.2	103.3	116.0	117.4	117.9	85.2	105.4	113.4	110.6	90.0	113.1	108.5	114.3	114.2	121.0	112.6	126.6	87.6	110.6	117.2	118.8	96.6
Importações / Imports	80.7	85.2	91.8	78.5	86.2	82.5	84.6	71.8	81.2	94.6	86.5	77.8	78.9	77.9	81.6	84.3	87.4	84.0	93.8	71.3	87.2	95.2	89.3	88.4

7. Índice GEE de Comércio Internacional de Bens / *GEE Index of International Trade of Goods*

Gráfico / Graph 7.3.
Intracomunitário
Intra-Community

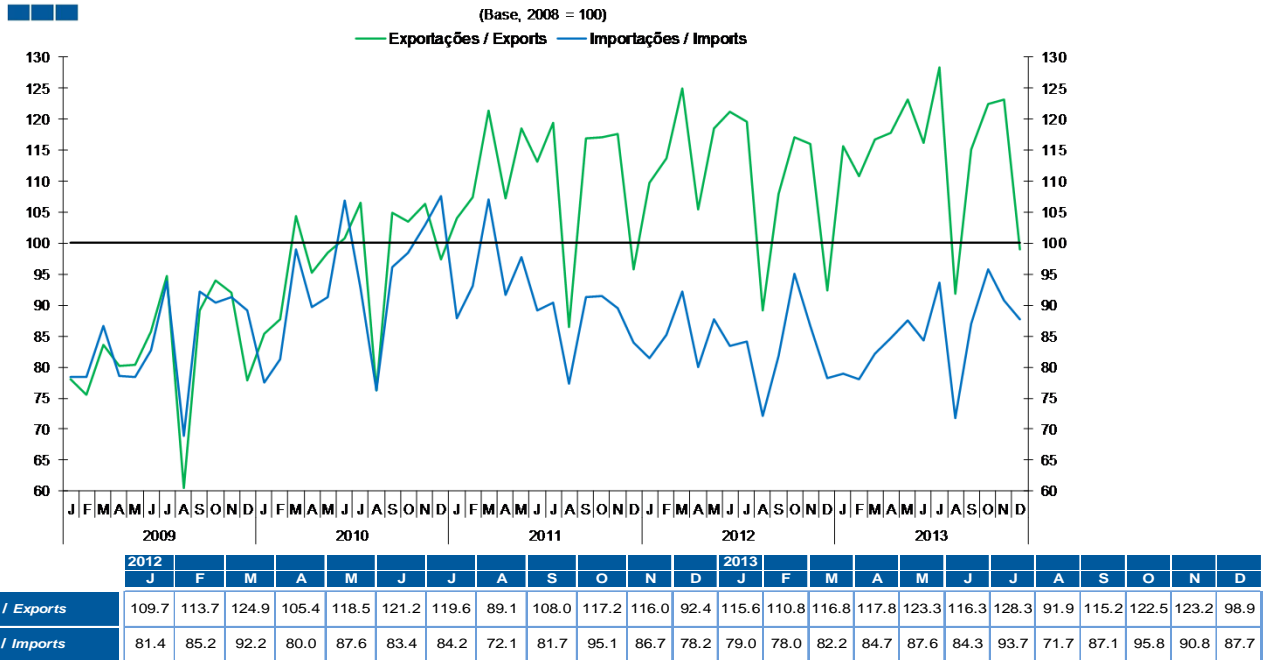


Gráfico / Graph 7.4.
Extracomunitário
Extra-Community

