

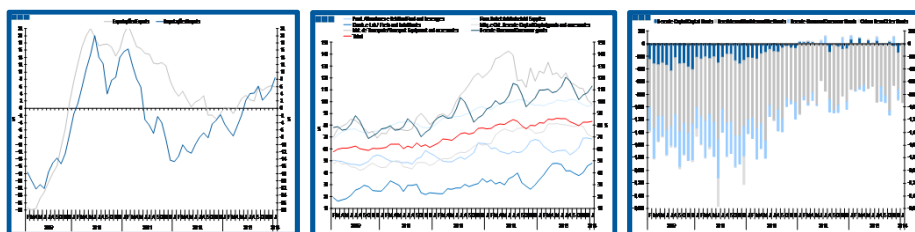
Estatísticas Temáticas de Conjuntura

Short-term Thematic Statistics

- Nº 3/2014 -

12 de março de 2014

March, 12, 2014



Comércio Internacional de Bens

International Trade of Goods

- Janeiro de 2014 -

- January, 2014 -

Fonte: Instituto Nacional de Estatística

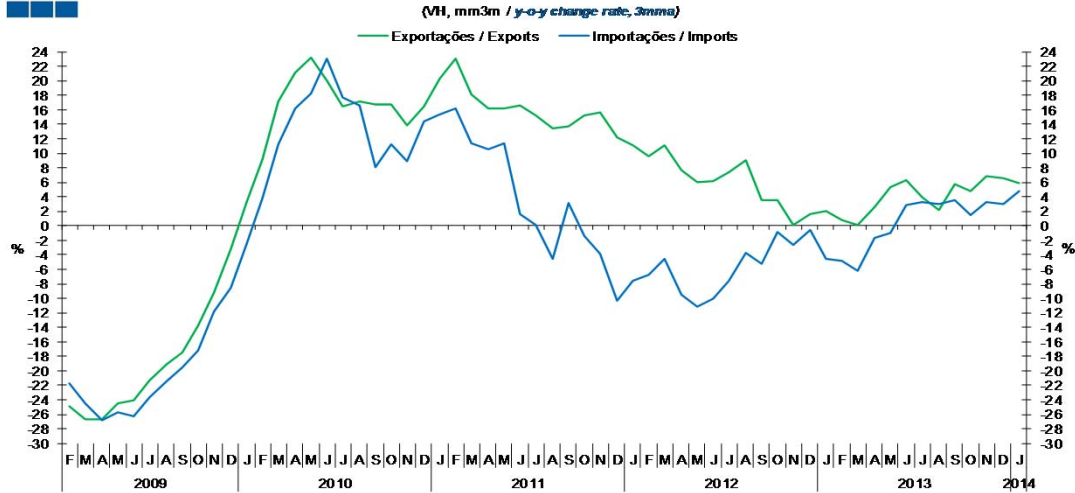
Source: Statistics Portugal

Índice / *Index*

	Página / <i>Page</i>
1. Total	
Importações e Exportações / <i>Imports and Exports</i>	3
Taxa de Cobertura / <i>Coverage Rate</i>	3
Saldo / <i>Balance</i>	4
2. Zona Euro-17 / <i>Euro Area-17</i>	
Importações e Exportações / <i>Imports and Exports</i>	5
Taxa de Cobertura / <i>Coverage Rate</i>	5
Saldo / <i>Balance</i>	6
3. Intracomunitário / <i>Intra-Community</i>	
Importações e Exportações / <i>Imports and Exports</i>	7
Taxa de Cobertura / <i>Coverage Rate</i>	7
Saldo / <i>Balance</i>	8
4. Extracomunitário / <i>Extra-Community</i>	
Importações e Exportações / <i>Imports and Exports</i>	9
Taxa de Cobertura / <i>Coverage Rate</i>	9
Saldo / <i>Balance</i>	10
5. Grandes Categorias Económicas / <i>Broad Economic Categories</i>	
Exportações / <i>Exports</i>	11
Importações / <i>Imports</i>	11
Taxa de Cobertura / <i>Coverage Rate</i>	12
Saldo / <i>Balance</i>	12
6. Classes Básicas de Bens do Sistema Europeu de Contas Nacionais / <i>Basic Classes of Goods in the European System of Accounts</i>	
Exportações / <i>Exports</i>	13
Importações / <i>Imports</i>	13
Taxa de Cobertura / <i>Coverage Rate</i>	14
Saldo / <i>Balance</i>	14
Estrutura do Saldo / <i>Balance Structure</i>	15
7. Índice GEE de Comércio Internacional de Bens / <i>GEE Index of International Trade of Goods</i>	
Total / <i>Total</i>	16
Zona Euro / <i>Euro Area</i>	16
Intracomunitário / <i>Intra-Community</i>	17
Extracomunitário / <i>Extra-Community</i>	17

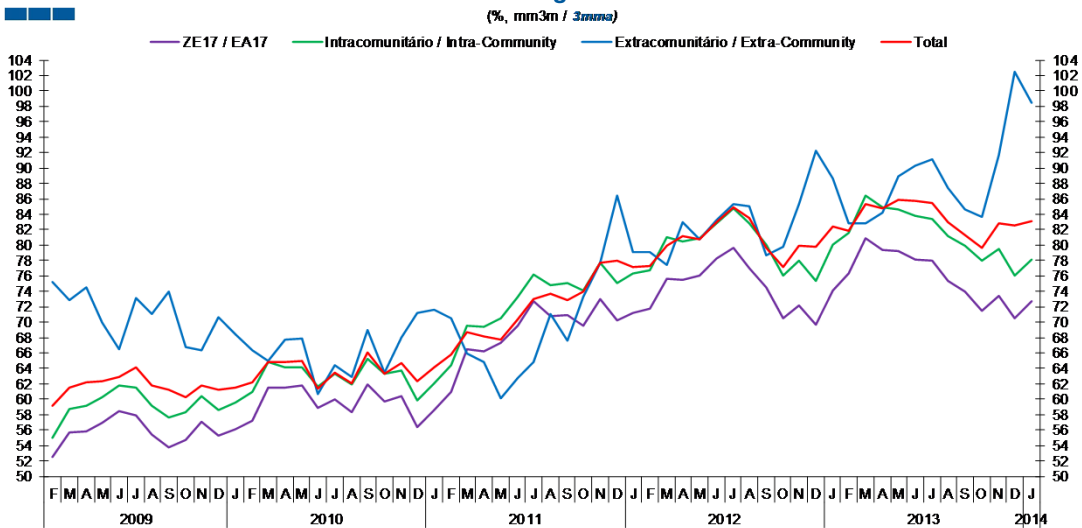
1. Total

Gráfico / Graph 1.1.
 Importações e Exportações
 Imports and Exports



	2012												2013												2014
	F	M	A	M	J	J	A	S	O	N	D	J	F	M	A	M	J	J	A	S	O	N	D	J	
Exportações / Exports	9.6	11.2	7.7	6.0	6.1	7.4	9.1	3.6	3.5	0.1	1.7	2.0	0.9	0.1	2.6	5.3	6.2	4.0	2.2	5.8	4.7	6.9	6.6	5.8	
Importações / Imports	-6.8	-4.5	-9.5	-11.2	-10.0	-7.6	-3.7	-5.2	-0.8	-2.7	-0.6	-4.5	-4.8	-6.2	-1.7	-0.9	2.8	3.2	3.0	3.6	1.4	3.2	3.1	4.8	

Gráfico / Graph 1.2.
 Taxa de Cobertura
 Coverage Rate

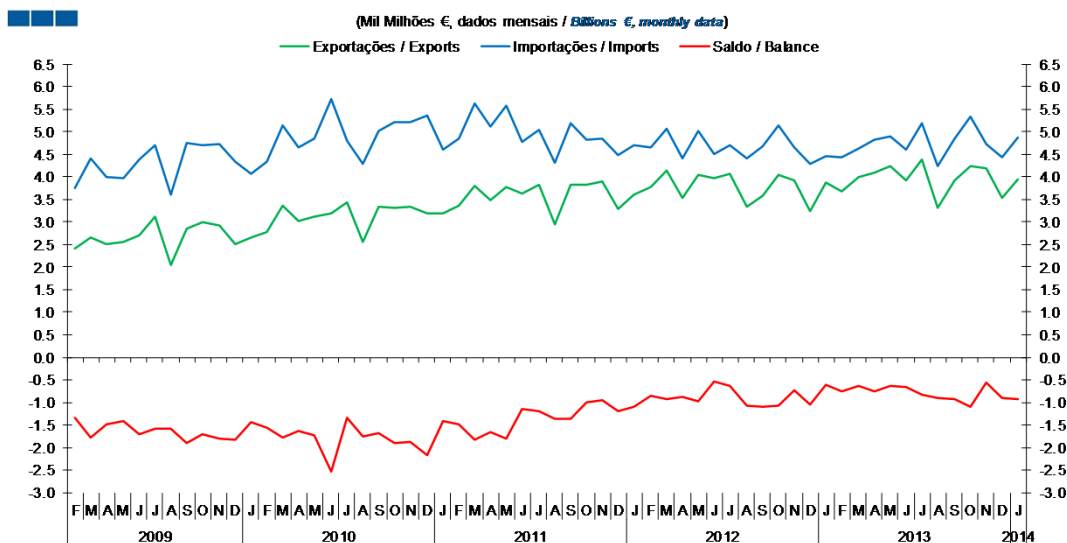


Fonte / Source: INE

	2012												2013												2014
	F	M	A	M	J	J	A	S	O	N	D	J	F	M	A	M	J	J	A	S	O	N	D	J	
ZE 17 / EA 17	71.8	75.6	75.5	76.0	78.2	79.6	77.0	74.6	70.5	72.1	69.6	74.1	76.3	80.9	79.4	79.3	78.2	78.0	75.4	73.9	71.5	73.4	70.4	72.7	
Intracomunitário / Intra-community	76.7	81.0	80.5	80.8	82.8	84.7	82.9	80.1	76.0	78.0	75.4	80.0	81.6	86.4	84.9	84.7	83.8	83.4	81.1	80.0	78.0	79.5	76.1	78.2	
Extracomunitário / Extra-community	79.1	77.4	83.0	80.8	83.3	85.3	85.1	78.7	79.8	85.3	92.3	88.7	82.8	82.9	84.2	88.9	90.4	91.1	87.4	84.7	83.6	91.6	102.5	98.5	
Total	77.3	80.0	81.1	80.8	82.9	84.9	83.5	79.7	77.1	79.9	79.8	82.3	81.9	85.4	84.7	85.9	85.7	85.5	82.9	81.4	79.7	82.8	82.5	83.2	

1. Total

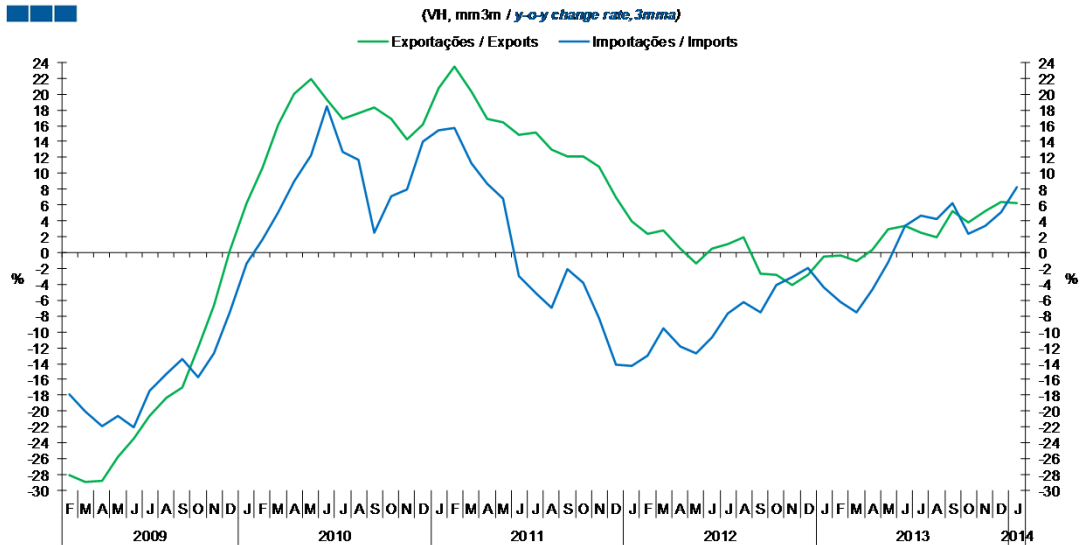
Gráfico / Graph 1.3.
Saldo
Balance



	2012												2013												2014
	F	M	A	M	J	J	A	S	O	N	D	J	F	M	A	M	J	J	A	S	O	N	D	J	
Exportações / Exports	3.8	4.1	3.5	4.0	4.0	4.1	3.3	3.6	4.0	3.9	3.2	3.9	3.7	4.0	4.1	4.2	3.9	4.4	3.3	3.9	4.2	4.2	3.5	4.0	
Importações / Imports	4.6	5.1	4.4	5.0	4.5	4.7	4.4	4.7	5.1	4.6	4.3	4.5	4.4	4.6	4.8	4.9	4.6	5.2	4.2	4.9	5.3	4.7	4.4	4.9	
Saldo / Balance	-0.9	-0.9	-0.9	-1.0	-0.5	-0.6	-1.1	-1.1	-1.1	-0.7	-1.0	-0.6	-0.7	-0.6	-0.7	-0.6	-0.7	-0.8	-0.9	-0.9	-1.1	-0.5	-0.9	-0.9	

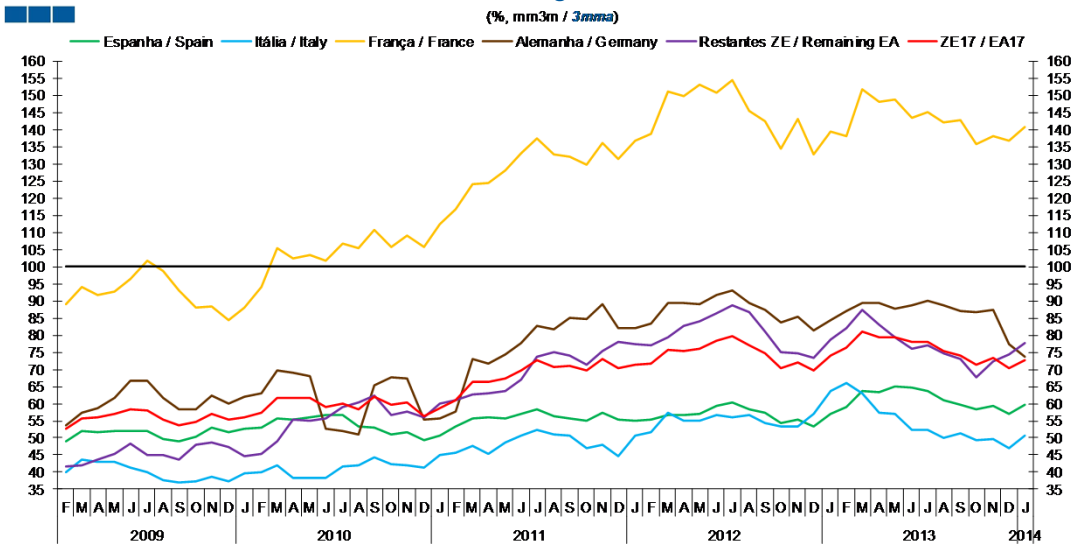
2. Zona Euro-17 / Euro Area-17

Gráfico / Graph 2.1.
 Importações e Exportações
 Imports and Exports



	2012												2013												2014	
	F	M	A	M	J	J	A	S	O	N	D	J	F	M	A	M	J	J	A	S	O	N	D	J		
Exportações / Exports	2.4	2.8	0.5	-1.4	0.4	1.1	2.0	-2.7	-2.8	-4.1	-2.8	-0.5	-0.4	-1.0	0.3	2.9	3.3	2.6	2.0	5.3	3.8	5.3	6.4	6.2		
Importações / Imports	-13.0	-9.6	-11.8	-12.7	-10.6	-7.7	-6.2	-7.5	-4.1	-3.0	-1.9	-4.3	-6.2	-7.5	-4.6	-1.3	3.4	4.6	4.2	6.2	2.4	3.4	5.1	8.2		

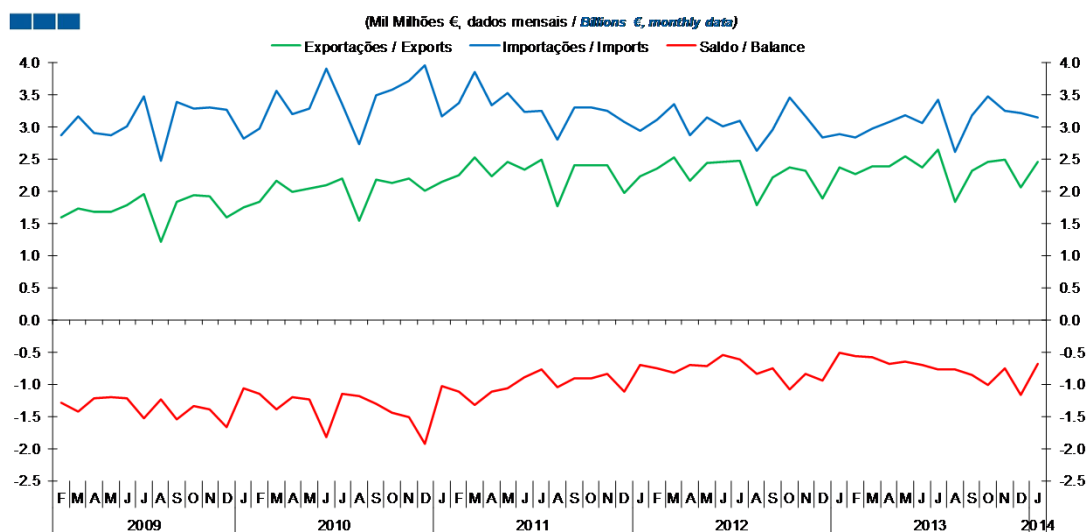
Gráfico / Graph 2.2.
 Taxa de Cobertura
 Coverage Rate



	2012												2013												2014	
	F	M	A	M	J	J	A	S	O	N	D	J	F	M	A	M	J	J	A	S	O	N	D	J		
Espanha / Spain	55.3	56.8	56.7	57.0	59.4	60.4	58.5	57.3	54.5	55.4	53.4	57.0	59.0	63.6	63.4	64.9	64.8	63.8	61.1	59.6	58.3	59.4	57.2	59.8		
Itália / Italy	51.7	57.4	55.0	55.1	56.6	55.9	56.6	54.2	53.3	53.2	57.1	63.6	65.9	63.0	57.5	57.0	52.4	52.4	50.0	51.4	49.2	49.7	47.1	50.7		
França / France	138.7	151.1	149.7	153.3	150.8	154.6	145.4	142.5	134.5	143.1	132.7	139.5	138.2	151.9	148.2	148.7	143.5	145.1	142.2	142.7	135.8	138.0	136.6	140.8		
Alemanha / Germany	83.4	89.5	89.3	89.0	91.8	92.9	89.5	87.5	83.5	85.4	81.2	84.3	87.0	89.5	89.5	87.6	88.8	90.0	88.8	86.9	86.6	87.5	77.4	73.6		
Restantes ZE / Remaining EA	76.9	79.3	82.8	84.1	86.2	88.7	86.6	81.0	74.9	74.7	73.5	78.6	82.1	87.2	83.1	79.4	76.0	77.0	74.6	72.9	67.7	72.5	74.5	77.8		
ZE 17 / EA 17	71.8	75.6	75.5	76.0	78.2	79.6	77.0	74.6	70.5	72.1	69.6	74.1	76.3	80.9	79.4	79.3	78.2	78.0	75.4	73.9	71.5	73.4	70.4	72.7		

2. Zona Euro-17 / Euro Area-17

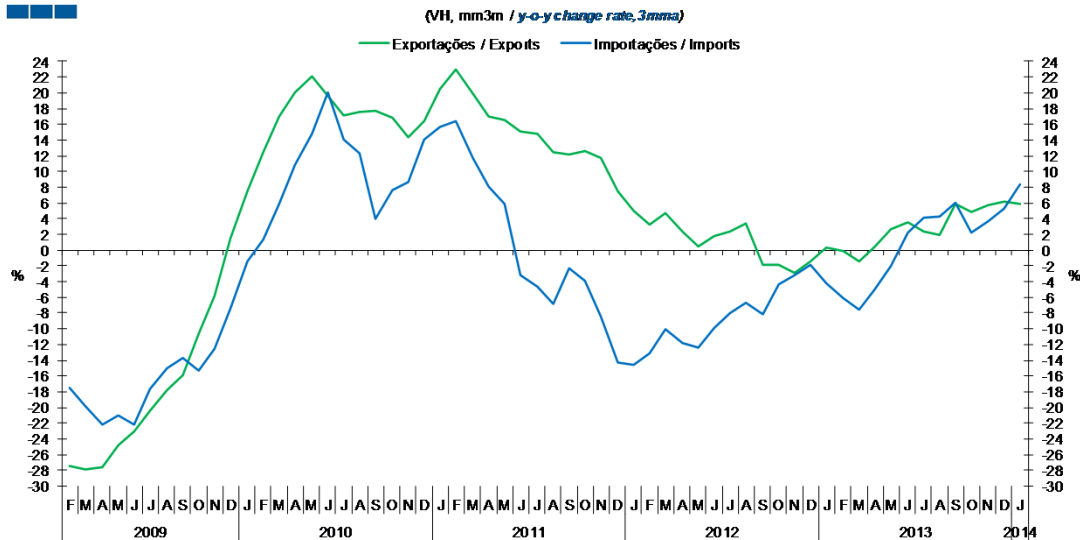
Gráfico / Graph 2.3.
 Saldo
 Balance



	2012												2013												2014	
	F	M	A	M	J	J	A	S	O	N	D	J	F	M	A	M	J	J	A	S	O	N	D	J	J	
Exportações / Exports	2.4	2.5	2.2	2.4	2.5	2.5	1.8	2.2	2.4	2.3	1.9	2.4	2.3	2.4	2.4	2.5	2.4	2.6	1.8	2.3	2.5	2.5	2.0	2.4		
Importações / Imports	3.1	3.3	2.9	3.1	3.0	3.1	2.6	3.0	3.4	3.2	2.8	2.9	2.8	3.0	3.1	3.2	3.1	3.4	2.6	3.2	3.5	3.2	3.2	3.1		
Saldo / Balance	-0.8	-0.8	-0.7	-0.7	-0.6	-0.6	-0.8	-0.8	-1.1	-0.8	-1.0	-0.5	-0.6	-0.6	-0.7	-0.7	-0.7	-0.8	-0.8	-0.9	-1.0	-0.8	-1.2	-0.7		

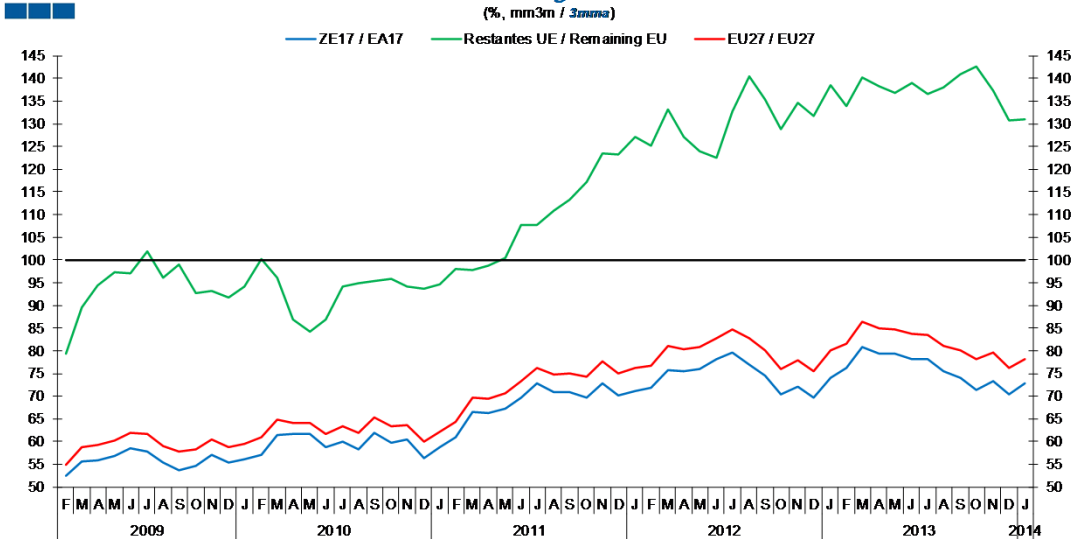
3. Intracomunitário / Intra-Community

Gráfico / Graph 3.1.
 Importações e Exportações
 Imports and Exports



	2012				2013				2014															
	F	M	A	M	J	J	A	S	O	N	D	J	F	M	A	M	J	J	A	S	O	N	D	J
Exportações / Exports	3.3	4.7	2.3	0.5	1.8	2.3	3.4	-1.9	-1.9	-2.9	-1.4	0.3	-0.1	-1.5	0.4	2.6	3.5	2.4	2.0	5.9	4.9	5.7	6.2	5.9
Importações / Imports	-13.2	-10.1	-11.8	-12.4	-9.9	-8.0	-6.7	-8.1	-4.3	-3.2	-1.8	-4.3	-6.1	-7.6	-4.9	-2.0	2.3	4.1	4.2	6.1	2.2	3.6	5.2	8.4

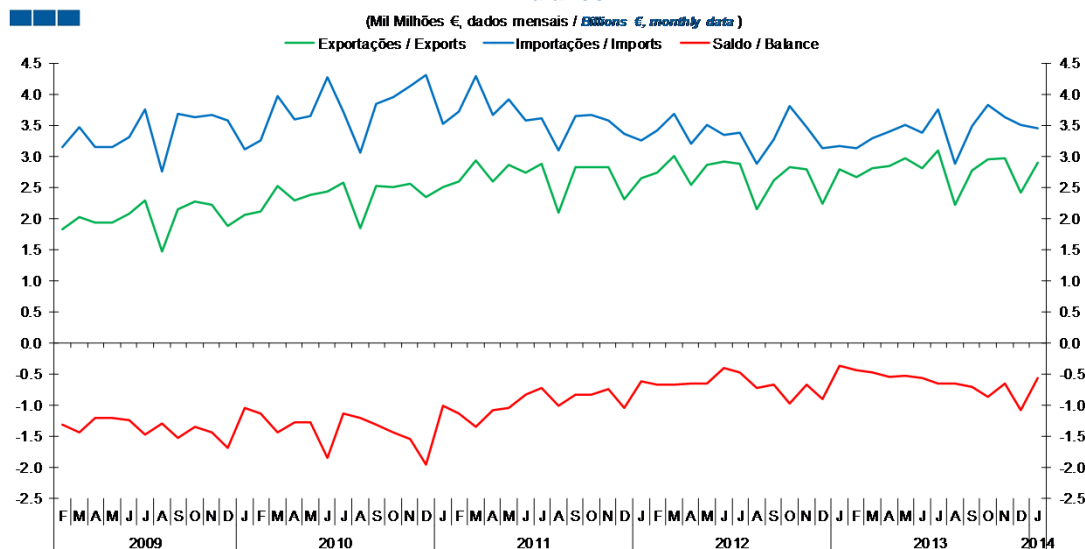
Gráfico / Graph 3.2.
 Taxa de Cobertura
 Coverage Rate



	2012				2013				2014															
	F	M	A	M	J	J	A	S	O	N	D	J	F	M	A	M	J	J	A	S	O	N	D	J
ZE 17 / EA 17	71.8	75.6	75.5	76	78.2	79.6	77	74.6	70.5	72.1	69.6	74.1	76.3	80.9	79.4	79.3	78.2	78	75.4	73.9	71.5	73.4	70.4	72.7
UE 27 / EU 27	76.7	81	80.5	80.8	82.8	84.7	82.9	80.1	76	78	75.4	80	81.6	86.4	84.9	84.7	83.8	83.4	81.1	80	78	79.5	76.1	78.2
Restantes UE / Remaining EU	125.2	133.2	127.1	123.9	122.5	132.8	140.4	135.3	128.9	134.7	131.8	138.6	133.9	140.1	138.3	136.9	138.9	136.7	137.9	141.0	142.5	137.3	130.7	130.9

3. Intracomunitário / Intra-Community

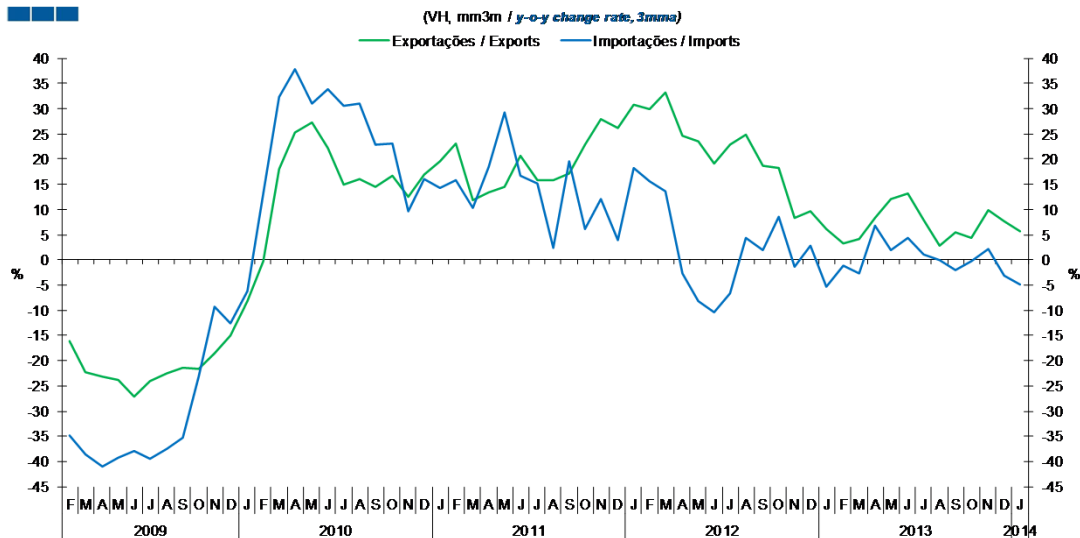
Gráfico / Graph 3.3.
 Saldo
 Balance



	2012												2013												2014
	F	M	A	M	J	J	A	S	O	N	D	J	F	M	A	M	J	J	A	S	O	N	D	J	
Exportações / Exports	2.7	3.0	2.5	2.9	2.9	2.9	2.1	2.6	2.8	2.8	2.2	2.8	2.7	2.8	2.8	3.0	2.8	3.1	2.2	2.8	3.0	3.0	2.4	2.9	
Importações / Imports	3.4	3.7	3.2	3.5	3.3	3.4	2.9	3.3	3.8	3.5	3.1	3.2	3.1	3.3	3.4	3.5	3.4	3.7	2.9	3.5	3.8	3.6	3.5	3.5	
Saldo / Balance	-0.7	-0.7	-0.7	-0.7	-0.4	-0.5	-0.7	-0.7	-1.0	-0.7	-0.9	-0.4	-0.5	-0.5	-0.6	-0.5	-0.6	-0.7	-0.7	-0.7	-0.9	-0.7	-1.1	-0.6	

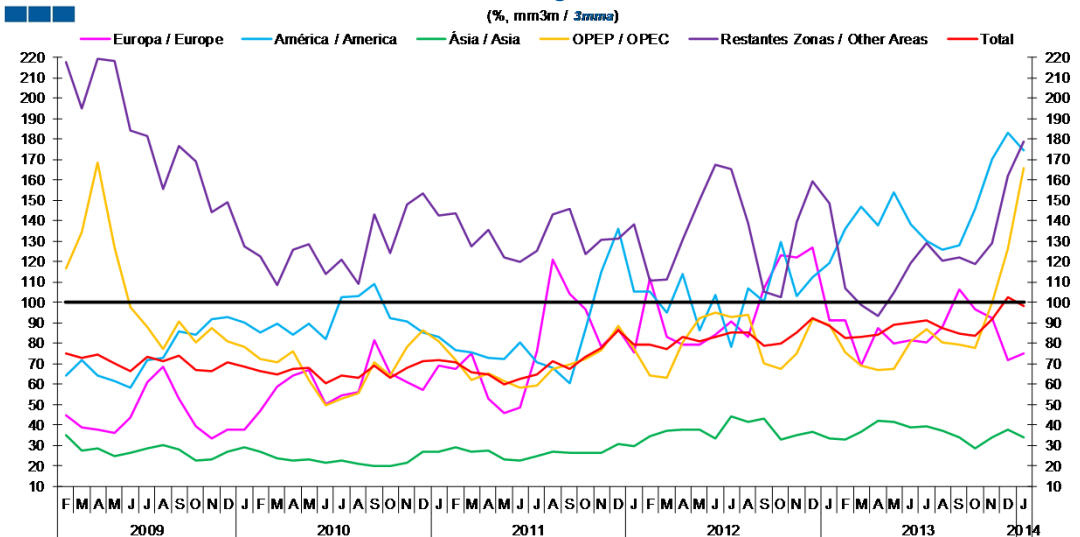
4. Extracomunitário / Extra-Community

Gráfico / Graph 4.1.
 Importações e Exportações
 Imports and Exports



	2012					2013					2014													
	F	M	A	M	J	J	A	S	O	N	D	J	F	M	A	M	J	J	A	S	O	N	D	J
Exportações / Exports	29.8	33.2	24.7	23.5	19.1	22.8	24.9	18.7	18.2	8.3	9.7	6.2	3.3	4.2	8.3	12.1	13.1	7.9	2.8	5.5	4.4	9.8	7.6	5.6
Importações / Imports	15.6	13.6	-2.6	-8.1	-10.3	-6.7	4.4	2.0	8.6	-1.3	2.8	-5.3	-1.2	-2.7	6.8	1.9	4.3	1.1	0.1	-1.9	-0.3	2.2	-3.1	-4.9

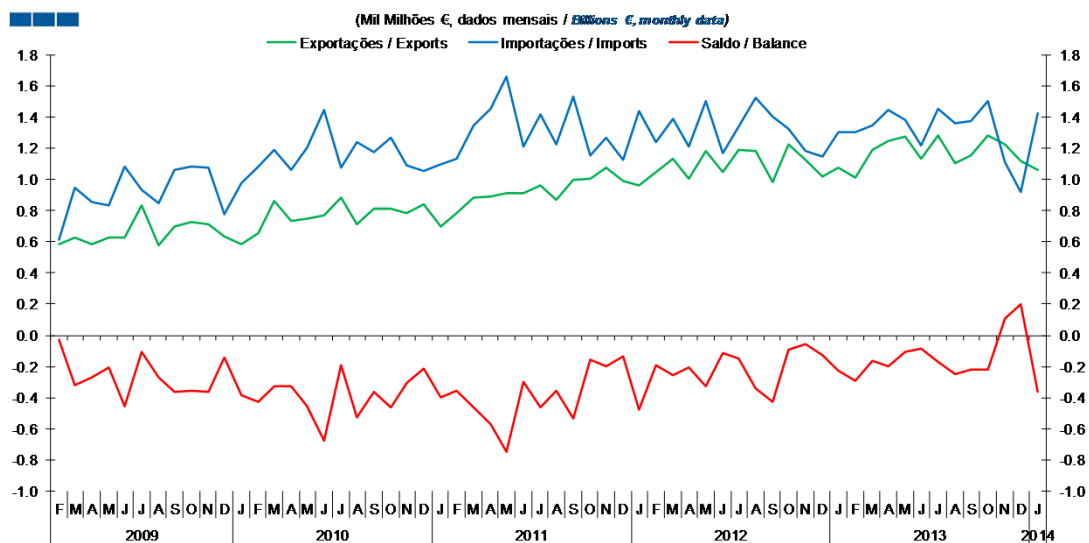
Gráfico / Graph 4.2.
 Taxa de Cobertura
 Coverage Rate



	2012					2013					2014													
	F	M	A	M	J	J	A	S	O	N	D	J	F	M	A	M	J	J	A	S	O	N	D	J
Europa / Europe	112.0	83.1	79.3	79.5	84.2	90.7	83.1	106.8	123.1	122.0	126.6	91.4	91.1	69.2	87.5	79.7	81.3	80.4	88.2	106.6	96.5	92.2	71.6	74.8
América / America	105.5	95.2	114.0	86.3	103.5	78.3	106.9	100.6	129.4	103.0	112.0	119.5	135.9	146.6	137.8	153.9	138.0	130.0	125.5	127.8	145.7	170.1	183.2	174.6
Ásia / Asia	34.4	37.4	38.0	38.0	33.5	44.0	41.5	43.4	33.1	35.2	36.5	33.4	33.1	36.9	42.0	41.3	38.6	39.3	37.0	33.7	28.7	34.2	37.7	33.8
OPEP / OPEC	64.1	63.1	80.3	92.3	94.9	92.9	94.1	70.1	67.7	74.7	91.9	89.1	75.3	69.0	67.0	67.6	81.2	86.8	80.3	79.4	77.6	99.9	126.5	165.7
Restantes Zonas / Other Areas	110.6	111.2	130.8	150.1	167.4	165.2	138.9	105.4	102.4	139.4	159.1	148.7	106.9	98.7	93.3	104.9	119.1	129.2	120.3	122.0	118.9	129.0	162.0	178.6
Total	79.1	77.4	83.0	80.8	83.3	85.3	85.1	78.7	79.8	85.3	92.3	88.7	82.8	82.9	84.2	88.9	90.4	91.1	87.4	84.7	83.6	91.6	102.5	98.5

4. Extracomunitário / Extra-Community

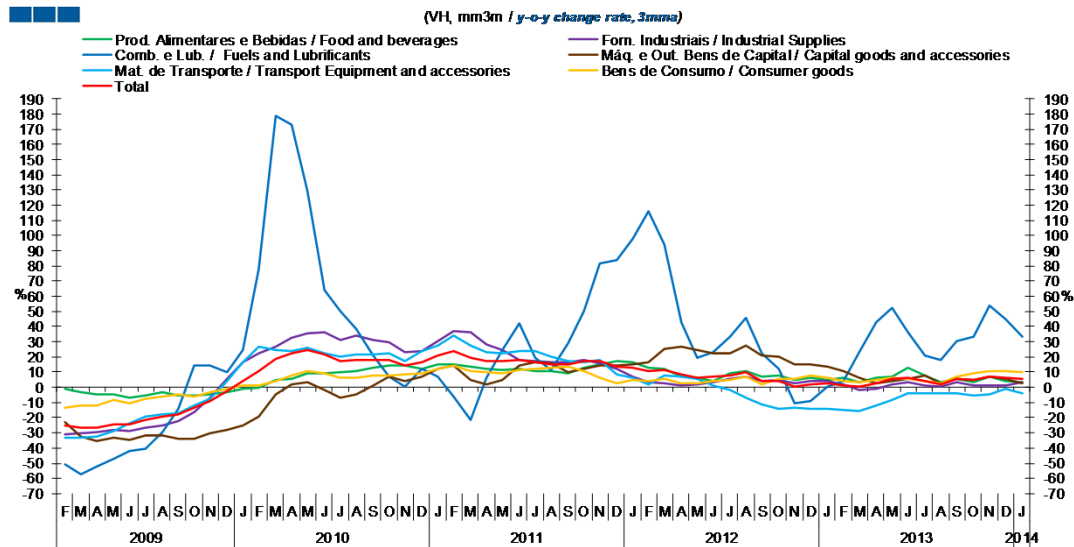
Gráfico / Graph 4.3.
 Saldo
 Balance



	2012				2013												2014							
	F	M	A	M	J	J	A	S	O	N	D	J	F	M	A	M	J	J	A	S	O	N	D	J
Exportações / Exports	1.0	1.1	1.0	1.2	1.0	1.2	1.2	1.0	1.2	1.1	1.0	1.1	1.0	1.2	1.2	1.3	1.1	1.3	1.1	1.2	1.3	1.2	1.1	1.1
Importações / Imports	1.2	1.4	1.2	1.5	1.2	1.3	1.5	1.4	1.3	1.2	1.1	1.3	1.3	1.3	1.4	1.4	1.2	1.4	1.4	1.4	1.5	1.1	0.9	1.4
Saldo / Balance	-0.2	-0.3	-0.2	-0.3	-0.1	-0.1	-0.3	-0.4	-0.1	-0.1	-0.1	-0.2	-0.3	-0.2	-0.2	-0.1	-0.1	-0.2	-0.3	-0.2	-0.2	0.1	0.2	-0.4

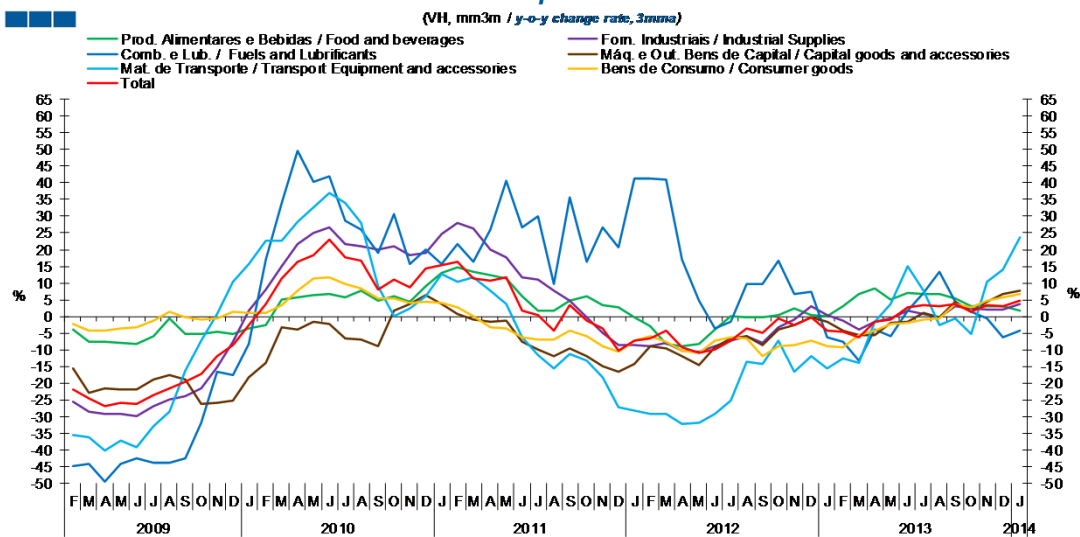
5. Grandes Categorias Económicas / Broad Economic Categories

Gráfico / Graph 5.1.
Exportações
Exports



	2012			2013			2014																	
	F	M	A	M	J	J	A	S	O	N	D	J	F	M	A	M	J	J	A	S	O	N	D	J
Produtos Alimentares e Bebidas / Food and Beverages	13.0	12.3	6.9	6.4	4.2	9.0	10.6	7.1	7.6	4.6	5.9	4.8	6.2	3.5	6.4	7.3	12.8	8.0	3.3	5.2	3.5	7.3	4.4	3.7
Comb. e Lub. / Fuels and Lubricants	115.8	94.0	42.7	19.3	23.2	33.2	45.6	22.4	12.2	-10.5	-8.8	0.8	4.3	23.0	42.6	52.1	36.3	20.7	18.2	30.2	33.5	54.1	44.7	33.5
Mat. de Transporte / Transport equipment and accessories	1.9	7.8	6.8	5.2	0.9	-1.5	-7.1	-11.6	-14.3	-13.7	-14.4	-13.9	-14.9	-15.9	-12.3	-8.4	-3.7	-3.6	-4.0	-3.6	-5.7	-4.8	-1.1	-3.7
Forn. Industriais / Industrial Supplies	3.3	2.7	1.5	1.7	3.6	5.3	6.7	3.8	4.7	2.4	4.3	4.3	1.9	-1.4	-1.0	1.6	3.3	1.3	0.1	3.2	0.9	1.3	1.4	3.1
Máq. e Out. Bens de Capital / Capital Goods and Accessories	16.6	25.4	26.8	24.4	22.3	22.6	27.7	21.1	20.3	15.1	15.3	13.3	10.5	6.5	2.8	4.0	5.4	8.1	2.5	5.7	4.7	7.3	5.7	2.9
Bens de Consumo / Consumer Goods	4.2	5.8	2.5	2.8	4.1	4.5	6.7	1.6	5.6	5.3	8.0	6.3	4.1	3.2	5.1	6.6	5.4	3.9	2.3	7.0	9.0	11.0	10.3	9.9
Total	10.7	11.7	8.2	6.6	6.6	7.9	9.6	4.2	4.1	0.6	2.2	2.3	1.0	0.1	2.6	5.3	6.2	4.0	2.2	5.8	4.8	6.9	6.6	5.8

Gráfico / Graph 5.2.
Importações
Imports



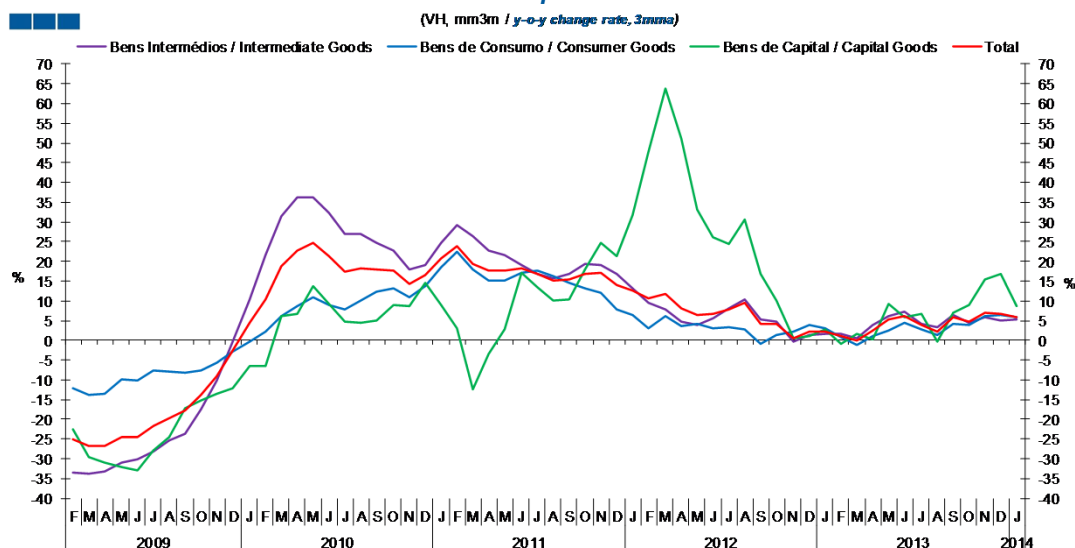
	2012			2013			2014																	
	F	M	A	M	J	J	A	S	O	N	D	J	F	M	A	M	J	J	A	S	O	N	D	J
Produtos Alimentares e Bebidas / Food and Beverages	-2.9	-8.4	-9.0	-8.1	-4.1	0.0	-0.2	-0.3	0.6	2.3	0.4	0.2	3.1	6.6	8.5	4.9	7.0	6.7	6.8	5.4	2.9	3.1	3.2	1.6
Comb. e Lub. / Fuels and Lubricants	41.4	41.0	17.0	4.8	-3.5	-1.5	9.7	9.9	16.6	6.6	7.4	-6.3	-7.5	-13.3	-3.8	-5.8	1.6	7.0	13.2	4.4	1.6	-0.5	-6.1	-4.3
Mat. de Transporte / Transport equipment and accessories	-29.1	-29.0	-32.0	-31.9	-29.3	-25.1	-13.4	-14.3	-7.3	-16.7	-12.0	-15.7	-12.5	-14.0	-1.7	3.8	15.0	7.8	-2.7	-0.7	-5.3	10.4	13.9	23.7
Forn. Industriais / Industrial Supplies	-8.8	-7.9	-10.4	-10.4	-8.9	-7.3	-5.9	-7.7	-3.3	-0.8	3.1	0.5	-1.1	-4.0	-1.6	-0.7	1.8	0.7	-0.3	3.0	2.5	2.1	2.0	3.6
Máq. e Out. Bens de Capital / Capital Goods and Accessories	-8.9	-9.4	-11.8	-14.5	-9.3	-6.5	-6.0	-8.7	-3.8	-2.5	-0.3	-1.5	-4.1	-5.5	-5.6	-1.9	-1.6	1.0	-0.3	4.5	1.3	4.3	6.7	7.7
Bens de Consumo / Consumer Goods	-5.8	-7.7	-10.1	-10.7	-7.2	-6.2	-6.6	-11.8	-8.8	-8.7	-7.4	-9.0	-9.1	-5.7	-4.3	-2.3	-2.0	-0.8	-0.8	3.8	2.6	4.6	5.7	6.6
Total	-6.5	-4.3	-9.2	-11.0	-9.8	-7.4	-3.5	-5.0	-0.5	-2.4	-0.4	-4.4	-4.7	-6.2	-1.7	-0.9	2.8	3.2	3.0	3.6	1.4	3.2	3.1	4.8

Nota: Não inclui Bens N.E. Outra Categoria devido ao seu reduzido valor relativo e elevada variabilidade.

Note: Does not include Goods Not Elsewhere Specified because of its small relative value and high variability

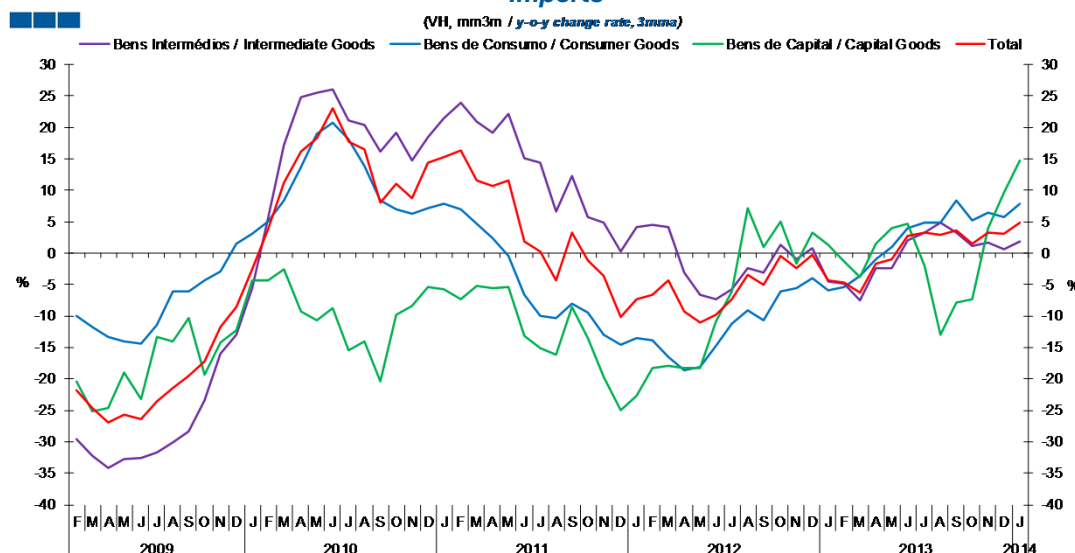
6. Classes Básicas de Bens do Sistema Europeu de Contas Nacionais / Basic Classes of Goods in the European System of Accounts

Gráfico / Graph 6.1.
 Exportações
 Exports



	2012												2013												2014																							
	F	M	A	M	J	J	A	S	O	N	D	J	F	M	A	M	J	J	A	S	O	N	D	J	F	M	A	M	J	J	A	S	O	N	D	J												
Bens Intermediários / Intermediate Goods	9.7	7.9	4.7	3.9	5.5	8.0	10.5	5.4	4.6	-0.4	1.3	1.7	1.5	0.5	3.8	6.1	7.2	4.1	3.2	6.6	4.5	5.8	4.9	5.3	9.7	7.9	4.7	3.9	5.5	8.0	10.5	5.4	4.6	-0.4	1.3	1.7	1.5	0.5	3.8	6.1	7.2	4.1	3.2	6.6	4.5	5.8	4.9	5.3
Bens de Consumo / Consumer Goods	3.1	6.2	3.7	4.1	3.1	3.3	2.8	-1.0	1.4	2.3	3.9	3.0	0.8	-1.2	1.1	2.4	4.6	2.8	1.4	4.1	3.9	6.2	6.3	5.8	3.1	6.2	3.7	4.1	3.1	3.3	2.8	-1.0	1.4	2.3	3.9	3.0	0.8	-1.2	1.1	2.4	4.6	2.8	1.4	4.1	3.9	6.2	6.3	5.8
Bens de Capital / Capital Goods	47.6	63.9	51.0	33.1	26.0	24.4	30.7	16.9	10.1	0.5	1.1	2.8	-0.8	1.5	0.4	9.3	5.8	6.6	-0.3	6.9	9.1	15.5	16.8	8.8	47.6	63.9	51.0	33.1	26.0	24.4	30.7	16.9	10.1	0.5	1.1	2.8	-0.8	1.5	0.4	9.3	5.8	6.6	-0.3	6.9	9.1	15.5	16.8	8.8
Total	10.7	11.7	8.2	6.6	6.6	7.9	9.6	4.2	4.1	0.6	2.2	2.3	1.0	0.1	2.6	5.3	6.2	4.0	2.2	5.8	4.8	6.9	6.6	5.8	10.7	11.7	8.2	6.6	6.6	7.9	9.6	4.2	4.1	0.6	2.2	2.3	1.0	0.1	2.6	5.3	6.2	4.0	2.2	5.8	4.8	6.9	6.6	5.8

Gráfico / Graph 6.2.
 Importações
 Imports



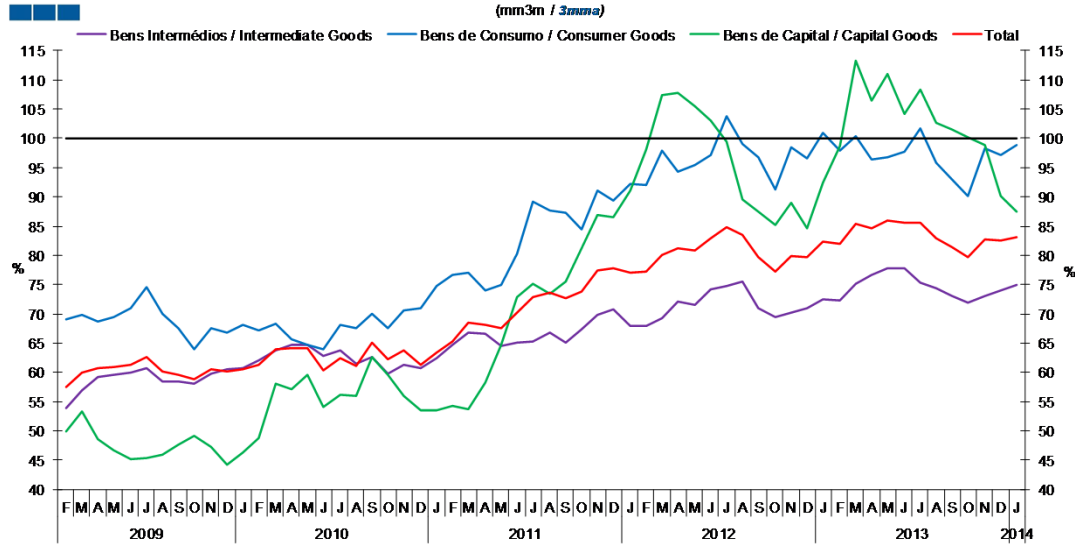
	2012												2013												2014																							
	F	M	A	M	J	J	A	S	O	N	D	J	F	M	A	M	J	J	A	S	O	N	D	J	F	M	A	M	J	J	A	S	O	N	D	J												
Bens Intermediários / Intermediate Goods	4.5	4.2	-3.1	-6.6	-7.4	-5.8	-2.4	-3.2	1.4	-1.1	0.8	-4.6	-4.8	-7.5	-2.5	-2.4	2.1	3.3	4.8	3.3	1.1	1.7	0.7	1.8	4.5	4.2	-3.1	-6.6	-7.4	-5.8	-2.4	-3.2	1.4	-1.1	0.8	-4.6	-4.8	-7.5	-2.5	-2.4	2.1	3.3	4.8	3.3	1.1	1.7	0.7	1.8
Bens de Consumo / Consumer Goods	-13.9	-16.5	-18.7	-18.2	-14.8	-11.2	-9.1	-10.7	-6.1	-5.5	-3.9	-5.9	-5.5	-3.7	-1.0	1.0	4.1	4.9	4.8	8.4	5.2	6.5	5.8	7.9	-13.9	-16.5	-18.7	-18.2	-14.8	-11.2	-9.1	-10.7	-6.1	-5.5	-3.9	-5.9	-5.5	-3.7	-1.0	1.0	4.1	4.9	4.8	8.4	5.2	6.5	5.8	7.9
Bens de Capital / Capital Goods	-18.4	-18.0	-18.3	-18.3	-10.9	-6.1	7.2	1.0	5.0	-1.7	3.3	1.3	-1.4	-3.8	1.6	3.9	4.7	-2.1	-13.0	-7.9	-7.2	3.9	9.7	14.8	-18.4	-18.0	-18.3	-18.3	-10.9	-6.1	7.2	1.0	5.0	-1.7	3.3	1.3	-1.4	-3.8	1.6	3.9	4.7	-2.1	-13.0	-7.9	-7.2	3.9	9.7	14.8
Total	-6.5	-4.3	-9.2	-11.0	-9.8	-7.4	-3.5	-5.0	-0.5	-2.4	-0.4	-4.4	-4.7	-6.2	-1.7	-0.9	2.8	3.2	3.0	3.6	1.4	3.2	3.1	4.8	-6.5	-4.3	-9.2	-11.0	-9.8	-7.4	-3.5	-5.0	-0.5	-2.4	-0.4	-4.4	-4.7	-6.2	-1.7	-0.9	2.8	3.2	3.0	3.6	1.4	3.2	3.1	4.8

Nota: Não inclui a série Outros Bens devido ao seu baixo valor relativo e elevada variabilidade.

Note: Does not include Other Goods because of its small relative value and high variability.

6. Classes Básicas de Bens do Sistema Europeu de Contas Nacionais / Basic Classes of Goods in the European System of Accounts

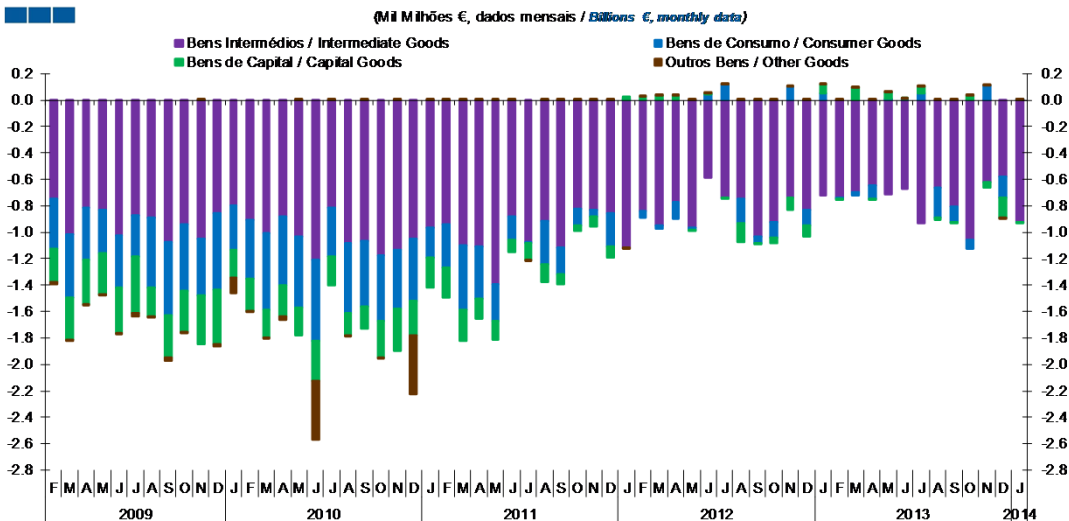
Gráfico / Graph 6.3.
Taxa de Cobertura
Coverage Rate



	2012												2013												2014											
	F	M	A	M	J	J	A	S	O	N	D	J	F	M	A	M	J	J	A	S	O	N	D	J												
Bens Intermediários / Intermediate Goods	67.8	69.2	72.0	71.6	74.1	74.8	75.5	70.9	69.5	70.2	71.0	72.4	72.4	75.2	76.7	77.8	77.8	75.4	74.3	73.1	71.8	73.0	74.0	74.9												
Bens de Consumo / Consumer Goods	91.9	97.9	94.4	95.4	97.2	103.7	99.0	96.8	91.2	98.5	96.7	100.9	98.0	100.4	96.3	96.8	97.7	101.7	95.8	92.9	90.0	98.2	97.2	98.9												
Bens de Capital / Capital Goods	98.1	107.4	107.7	105.5	103.1	99.5	89.6	87.4	85.2	88.9	84.6	92.4	98.7	113.3	106.5	110.9	104.1	108.4	102.6	101.5	100.2	98.8	90.1	87.5												
Total	77.3	80.0	81.1	80.8	82.9	84.9	83.5	79.7	77.1	79.9	79.8	82.4	81.9	85.4	84.7	85.9	85.7	85.5	82.9	81.4	79.7	82.8	82.5	83.2												

Nota: Não inclui a série Outros Bens devido ao seu baixo valor relativo e elevada variabilidade.
Note: Does not include Other Goods because of its small relative value and high variability.

Gráfico / Graph 6.4.
Saldo de Bens
Balance of Goods



	2012												2013												2014											
	F	M	A	M	J	J	A	S	O	N	D	J	F	M	A	M	J	J	A	S	O	N	D	J												
Bens Intermediários / Intermediate Goods	-0.8	-0.9	-0.8	-1.0	-0.6	-0.7	-0.7	-1.0	-0.9	-0.7	-0.8	-0.7	-0.7	-0.7	-0.6	-0.7	-0.7	-0.9	-0.7	-0.8	-1.1	-0.6	-0.6	-0.9												
Bens de Consumo / Consumer Goods	-0.1	0.0	-0.1	0.0	0.0	0.1	-0.2	0.0	-0.1	0.1	-0.1	0.1	0.0	0.0	-0.1	0.0	0.1	-0.2	-0.1	-0.1	0.1	-0.2	0.0													
Bens de Capital / Capital Goods	0.0	0.0	0.0	0.0	0.0	0.0	0.0	0.0	0.0	0.0	0.1	0.0	0.1	0.0	0.1	0.0	0.0	0.0	0.0	0.0	0.0	0.0	0.0													
Outros Bens / Other Goods	0.0	0.0	0.0	0.0	0.0	0.0	0.0	0.0	0.0	0.0	0.0	0.0	0.0	0.0	0.0	0.0	0.0	0.0	0.0	0.0	0.0	0.0	0.0													
Total	-0.9	-0.9	-0.9	-1.0	-0.5	-0.6	-1.1	-1.1	-1.1	-0.7	-1.0	-0.6	-0.7	-0.6	-0.7	-0.6	-0.7	-0.8	-0.9	-0.9	-1.1	-0.5	-0.9	-0.9												

6. Classes Básicas de Bens do Sistema Europeu de Contas Nacionais / Basic Classes of Goods in the European System of Accounts

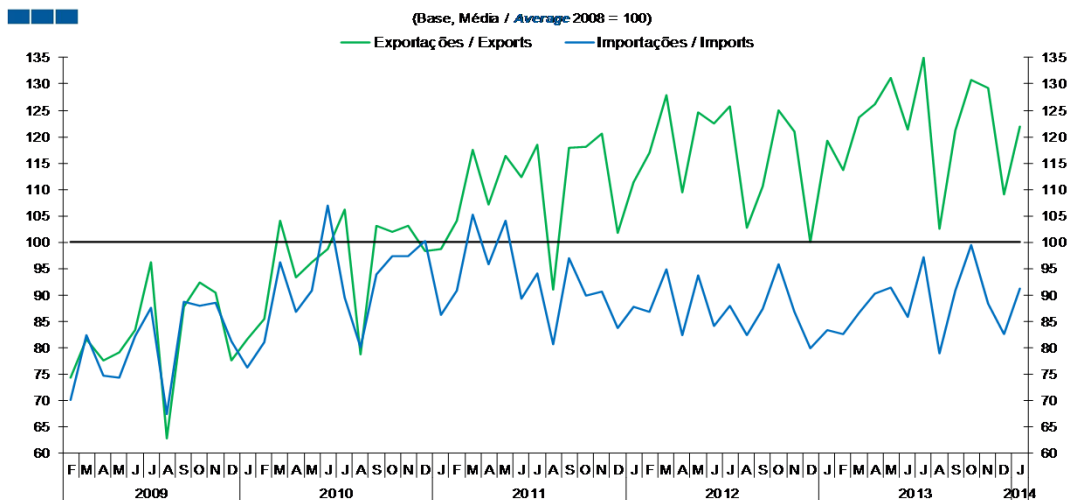
Tabela / Table 1.1.
Estrutura do Saldo
Balance Structure

Milhões de euros \ Millions of euros

		2013																				2014			
		F		M		A		M		J		J		A		S		O		N		D		J	
		M€	%	M€	%	M€	%	M€	%	M€	%	M€	%	M€	%	M€	%	M€	%	M€	%	M€	%	M€	%
Bens Intermedios / Intermediate Goods	Prod. alim. e bebidas / <i>Foods and beverages</i>	-147	20	-163	26	-146	19	-104	16	-146	22	-154	19	-142	16	-140	15	-158	14	-139	25	-119	13	-101	11
	Forn. industriais NE noutra categoria / <i>Industrial supplies NE specified</i>	-87	12	9	-1	34	-5	6	-1	-12	2	11	-1	70	-8	-19	2	-81	7	-8	2	-69	8	-55	6
	Comb. e lubrificantes / <i>Fuel and lubricants</i>	-543	73	-581	92	-533	71	-603	94	-511	77	-742	90	-618	68	-651	70	-801	74	-429	78	-317	36	-737	80
	Máquinas, outros bens de capital (Partes e acessórios) / <i>Capital goods and parts and accessories</i>	-48	6	-32	5	-65	9	-66	10	-36	5	-66	8	-36	4	-50	5	-78	7	-61	11	-88	10	-75	8
	Material de transportes (Partes e acessórios) / <i>Transport equipment (Parts and accessories)</i>	87	-12	73	-12	66	-9	58	-9	33	-5	23	-3	65	-7	52	-6	64	-6	13	-2	12	-1	45	-5
Total		-738	99	-693	109	-644	86	-709	110	-672	102	-928	113	-662	73	-807	87	-1,053	97	-624	114	-580	65	-924	100
Bens de Consumo / Consumption Goods	Prod. alim. e bebidas destinados ao consumo dos particulares / <i>Food and beverages mainly for household consumption</i>	-113	15	-113	18	-142	19	-147	23	-133	20	-152	19	-195	21	-93	10	-82	8	-21	4	-102	12	-103	11
	Material de transporte / <i>Transport equipment</i>	30	-4	35	-6	21	-3	57	-9	22	-3	22	-3	-71	8	8	-1	-17	2	11	-2	-67	8	-30	3
	Bens de consumo NE noutra categoria / <i>Consumption goods NE specified</i>	77	-10	47	-7	21	-3	96	-15	117	-18	186	-23	36	-4	-31	3	29	-3	122	-22	10	-1	137	-15
Total		-6	1	-31	5	-100	13	6	-1	6	-1	56	-7	-230	25	-117	13	-70	6	111	-20	-159	18	4	0
Bens de Capital / Capital Goods	Carburantes para motor / <i>Motor spirit</i>	55	-7	100	-16	87	-12	68	-11	36	-5	64	-8	48	-5	48	-5	55	-5	86	-16	63	-7	71	-8
	Máquinas, outros bens de capital (exceto material de transporte) / <i>Capital goods (except transport equipment)</i>	-63	8	-59	9	-63	8	-56	9	-75	11	-94	11	-70	8	-81	9	-52	5	-116	21	-199	22	-80	9
	Material de transportes destinado à indústria / <i>Transport equipment, industrial</i>	5	-1	49	-8	-31	4	46	-7	42	-6	77	-9	4	0	22	-2	30	-3	-8	2	-12	1	3	0
Total		-3	0	90	-14	-6	1	58	-9	3	0	48	-6	-18	2	-11	1	32	-3	-38	7	-148	17	-7	1
Outros / Others		2	0	1	0	3	0	2	0	1	0	2	0	2	0	3	0	2	0	3	-1	0	0	2	0
Total		-745	100	-634	100	-747	100	-643	100	-662	100	-823	100	-908	100	-932	100	-1,090	100	-548	100	-888	100	-925	100

7. Índice GEE de Comércio Internacional de Bens / *GEE Index of International Trade of Goods*

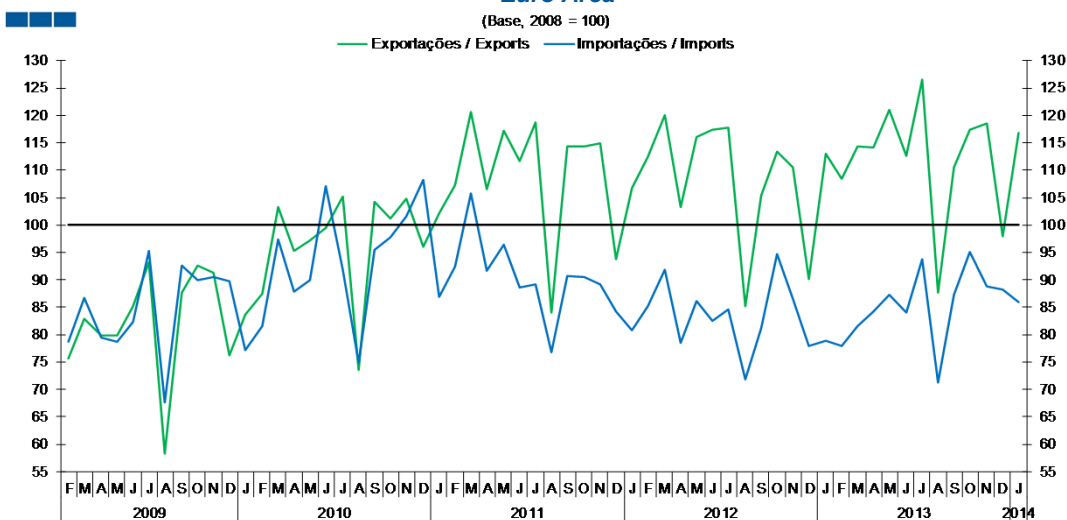
Gráfico / Graph 7.1.
 Total



Fonte / Source: INE

	2012												2013												2014
	F	M	A	M	J	J	A	S	O	N	D	J	F	M	A	M	J	J	A	S	O	N	D	J	
Exportações / Exports	117.0	127.8	109.4	124.6	122.6	125.7	102.8	110.6	125.1	121.0	100.1	119.3	113.6	123.6	126.2	131.1	121.4	135.1	102.5	121.2	130.9	129.2	109.1	122.0	
Importações / Imports	86.9	94.9	82.4	93.7	84.1	87.9	82.3	87.4	95.8	86.8	79.9	83.4	82.7	86.7	90.3	91.4	85.8	97.1	79.0	90.8	99.6	88.4	82.6	91.1	

Gráfico / Graph 7.2.
 Zona Euro
 Euro Area

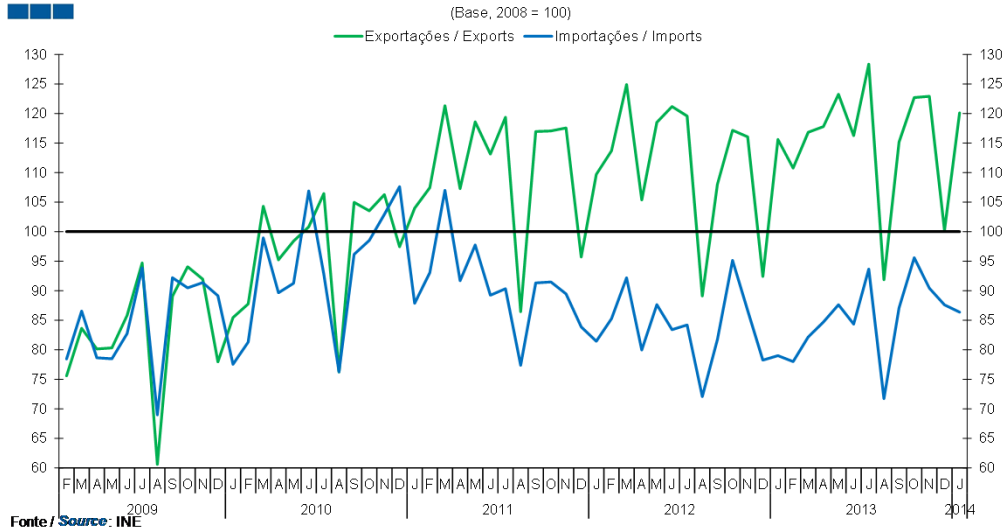


Fonte / Source: INE

	2012												2013												2014
	F	M	A	M	J	J	A	S	O	N	D	J	F	M	A	M	J	J	A	S	O	N	D	J	
Exportações / Exports	112.5	120.2	103.3	116.0	117.4	117.9	85.2	105.4	113.4	110.6	90.0	113.1	108.5	114.3	114.2	121.0	112.6	126.6	87.6	110.6	117.5	118.6	97.9	116.8	
Importações / Imports	85.2	91.8	78.5	86.2	82.5	84.6	71.8	81.2	94.6	86.5	77.8	78.9	77.9	81.6	84.3	87.4	84.0	93.8	71.3	87.2	95.1	88.9	88.3	86.0	

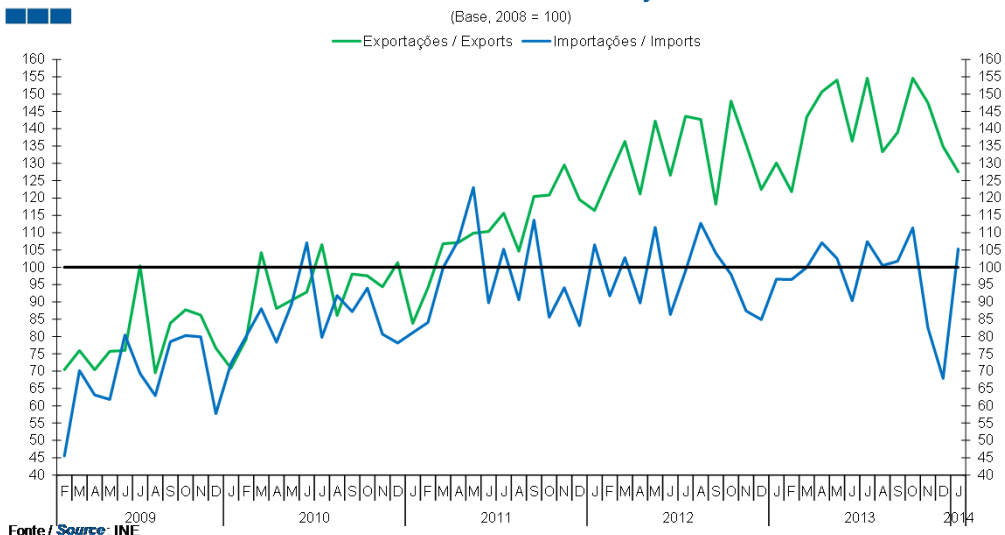
7. Índice GEE de Comércio Internacional de Bens / *GEE Index of International Trade of Goods*

Gráfico / Graph 7.3.
Intracomunitário
Intra-Community



	2012												2013												2014
	F	M	A	M	J	J	A	S	O	N	D	J	F	M	A	M	J	J	A	S	O	N	D	J	
Exportações / Exports	113.7	124.9	105.4	118.5	121.2	119.6	89.1	108.0	117.2	116.0	92.4	115.6	110.8	116.8	117.8	123.3	116.3	128.3	91.9	115.2	122.7	122.9	100.2	120.1	
Importações / Imports	85.2	92.2	80.0	87.6	83.4	84.2	72.1	81.7	95.1	86.7	78.2	79.0	78.0	82.2	84.7	87.6	84.3	93.7	71.7	87.1	95.6	90.4	87.6	86.4	

Gráfico / Graph 7.4.
Extracomunitário
Extra-Community



	2012												2013												2014
	F	M	A	M	J	J	A	S	O	N	D	J	F	M	A	M	J	J	A	S	O	N	D	J	
Exportações / Exports	126.5	136.3	121.2	142.2	126.6	143.6	142.7	118.2	148.0	135.5	122.5	130.1	121.8	143.4	150.7	154.1	136.5	154.6	133.4	138.9	154.6	147.5	134.9	127.6	
Importações / Imports	91.7	102.7	89.7	111.5	86.4	99.0	112.7	104.1	97.9	87.4	84.9	96.5	96.5	100.0	107.1	102.5	90.3	107.4	100.5	101.8	111.4	82.5	67.9	105.3	