

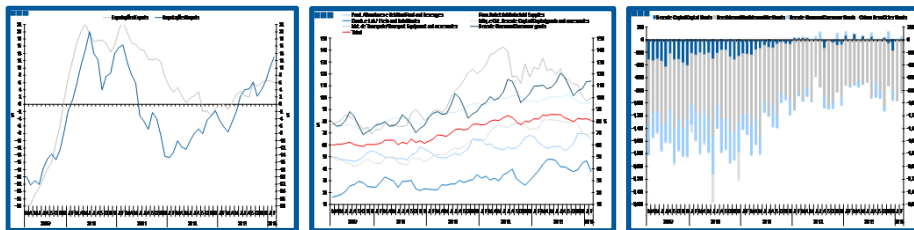
# Estatísticas Temáticas de Conjuntura

## *Short-term Thematic Statistics*

- Nº 4/2014 -

11 de abril de 2014

*April, 11, 2014*



## Comércio Internacional de Bens

### *International Trade of Goods*

- Fevereiro de 2014 -

*- February, 2014 -*

Fonte: Instituto Nacional de Estatística

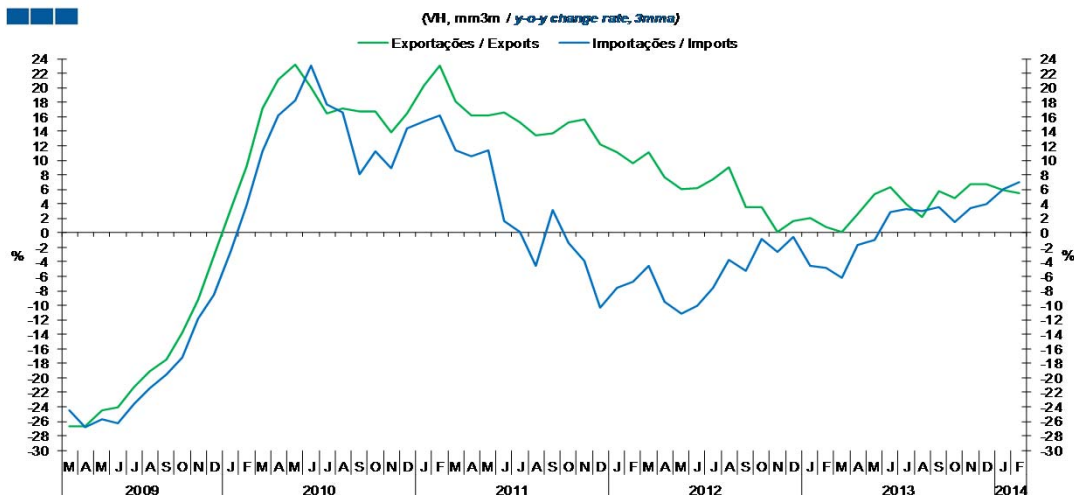
*Source: Statistics Portugal*

## Índice / Index

	Página / Page
<b>1. Total</b>	
Importações e Exportações / <i>Imports and Exports</i>	3
Taxa de Cobertura / <i>Coverage Rate</i>	3
Saldo / <i>Balance</i>	4
<b>2. Zona Euro-17 / <i>Euro Area-17</i></b>	
Importações e Exportações / <i>Imports and Exports</i>	5
Taxa de Cobertura / <i>Coverage Rate</i>	5
Saldo / <i>Balance</i>	6
<b>3. Intracomunitário / <i>Intra-Community</i></b>	
Importações e Exportações / <i>Imports and Exports</i>	7
Taxa de Cobertura / <i>Coverage Rate</i>	7
Saldo / <i>Balance</i>	8
<b>4. Extracomunitário / <i>Extra-Community</i></b>	
Importações e Exportações / <i>Imports and Exports</i>	9
Taxa de Cobertura / <i>Coverage Rate</i>	9
Saldo / <i>Balance</i>	10
<b>5. Grandes Categorias Económicas / <i>Broad Economic Categories</i></b>	
Exportações / <i>Exports</i>	11
Importações / <i>Imports</i>	11
Taxa de Cobertura / <i>Coverage Rate</i>	12
Saldo / <i>Balance</i>	12
<b>6. Classes Básicas de Bens do Sistema Europeu de Contas Nacionais / <i>Basic Classes of Goods in the European System of Accounts</i></b>	
Exportações / <i>Exports</i>	13
Importações / <i>Imports</i>	13
Taxa de Cobertura / <i>Coverage Rate</i>	14
Saldo / <i>Balance</i>	14
Estrutura do Saldo / <i>Balance Structure</i>	15
<b>7. Índice GEE de Comércio Internacional de Bens / <i>GEE Index of International Trade of Goods</i></b>	
Total / <i>Total</i>	16
Zona Euro / <i>Euro Area</i>	16
Intracomunitário / <i>Intra-Community</i>	17
Extracomunitário / <i>Extra-Community</i>	17

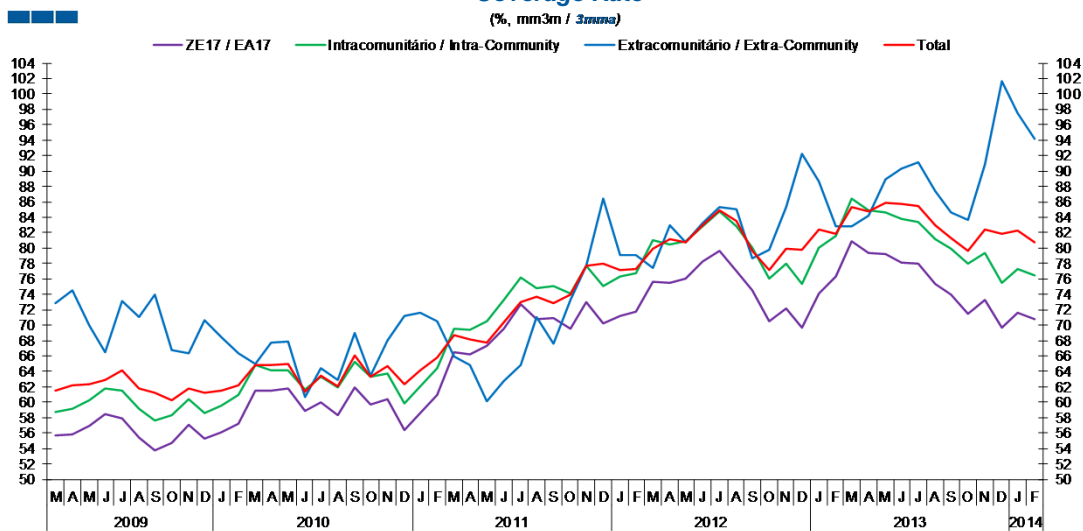
## 1. Total

Gráfico / Graph 1.1.  
Importações e Exportações  
Imports and Exports



	2012												2013												2014	
	M	A	M	J	J	A	S	O	N	D	J	F	M	A	M	J	J	A	S	O	N	D	J	F		
Exportações / Exports	11.2	7.7	6.0	6.1	7.4	9.1	3.6	3.5	0.1	1.7	2.0	0.9	0.1	2.6	5.3	6.2	4.0	2.2	5.8	4.7	6.7	6.7	5.9	5.4		
Importações / Imports	-4.5	-9.5	-11.2	-10.0	-7.6	-3.7	-5.2	-0.8	-2.7	-0.6	-4.5	-4.8	-6.2	-1.7	-0.9	2.8	3.2	3.0	3.6	1.4	3.5	4.0	6.1	7.0		

Gráfico / Graph 1.2.  
Taxa de Cobertura  
Coverage Rate

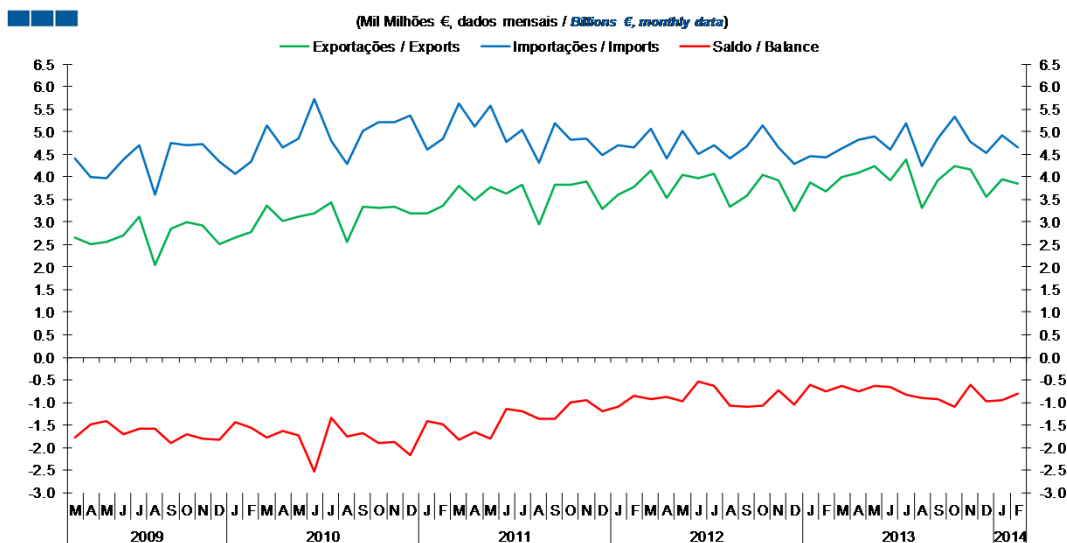


Fonte / Source: INE

	2012												2013												2014	
	M	A	M	J	J	A	S	O	N	D	J	F	M	A	M	J	J	A	S	O	N	D	J	F		
ZE 17 / EA 17	75.6	75.5	76.0	78.2	79.6	77.0	74.6	70.5	72.1	69.6	74.1	76.3	80.9	79.4	79.3	78.2	78.0	75.4	73.9	71.5	73.3	69.7	71.7	70.7		
Intracomunitário / Intra-community	81.0	80.5	80.8	82.8	84.7	82.9	80.1	76.0	78.0	75.4	80.0	81.6	86.4	84.9	84.7	83.8	83.4	81.1	80.0	78.0	79.4	75.5	77.3	76.4		
Extracomunitário / Extra-community	77.4	83.0	80.8	83.3	85.3	85.1	78.7	79.8	85.3	92.3	88.7	82.8	82.9	84.2	88.9	90.4	91.1	87.4	84.7	83.6	90.9	101.7	97.6	94.1		
Total	80.0	81.1	80.8	82.9	84.9	83.5	79.7	77.1	79.9	79.8	82.3	81.9	85.4	84.7	85.9	85.7	85.5	82.9	81.4	79.7	82.4	81.8	82.2	80.7		

# 1. Total

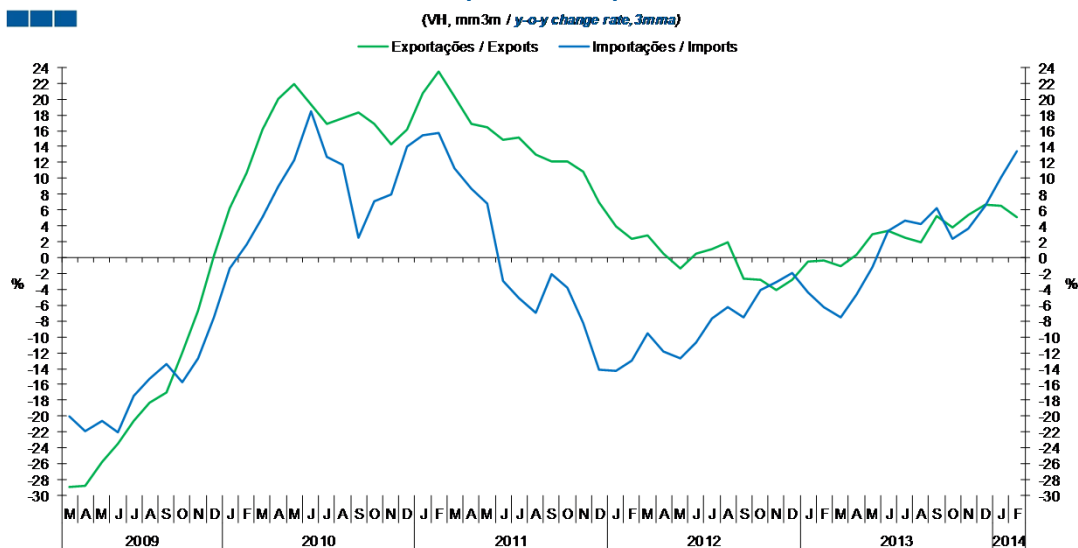
Gráfico / Graph 1.3.  
**Saldo**  
**Balance**



	2012												2013												2014	
	M	A	M	J	J	A	S	O	N	D	J	F	M	A	M	J	J	A	S	O	N	D	J	F		
Exportações / Exports	4.1	3.5	4.0	4.0	4.1	3.3	3.6	4.0	3.9	3.2	3.9	3.7	4.0	4.1	4.2	3.9	4.4	3.3	3.9	4.2	4.2	3.6	4.0	3.9		
Importações / Imports	5.1	4.4	5.0	4.5	4.7	4.4	4.7	5.1	4.6	4.3	4.5	4.4	4.6	4.8	4.9	4.6	5.2	4.2	4.9	5.3	4.8	4.5	4.9	4.6		
Saldo / Balance	-0.9	-0.9	-1.0	-0.5	-0.6	-1.1	-1.1	-1.1	-0.7	-1.0	-0.6	-0.7	-0.6	-0.7	-0.6	-0.7	-0.8	-0.9	-0.9	-1.1	-0.6	-1.0	-1.0	-0.8		

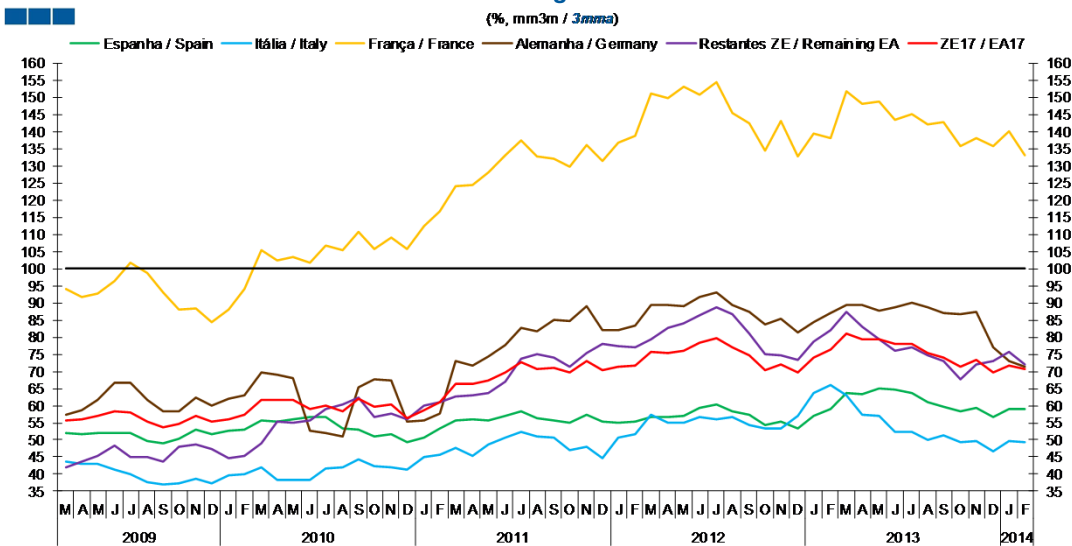
## 2. Zona Euro-17 / Euro Area-17

Gráfico / Graph 2.1.  
Importações e Exportações  
Imports and Exports



	2012				2013												2014							
	M	A	M	J	J	A	S	O	N	D	J	F	M	A	M	J	J	A	S	O	N	D	J	F
Exportações / Exports	2.8	0.5	-1.4	0.4	1.1	2.0	-2.7	-2.8	-4.1	-2.8	-0.5	-0.4	-1.0	0.3	2.9	3.3	2.6	2.0	5.3	3.8	5.4	6.6	6.6	5.2
Importações / Imports	-9.6	-11.8	-12.7	-10.6	-7.7	-6.2	-7.5	-4.1	-3.0	-1.9	-4.3	-6.2	-7.5	-4.6	-1.3	3.4	4.6	4.2	6.2	2.4	3.7	6.5	10.1	13.4

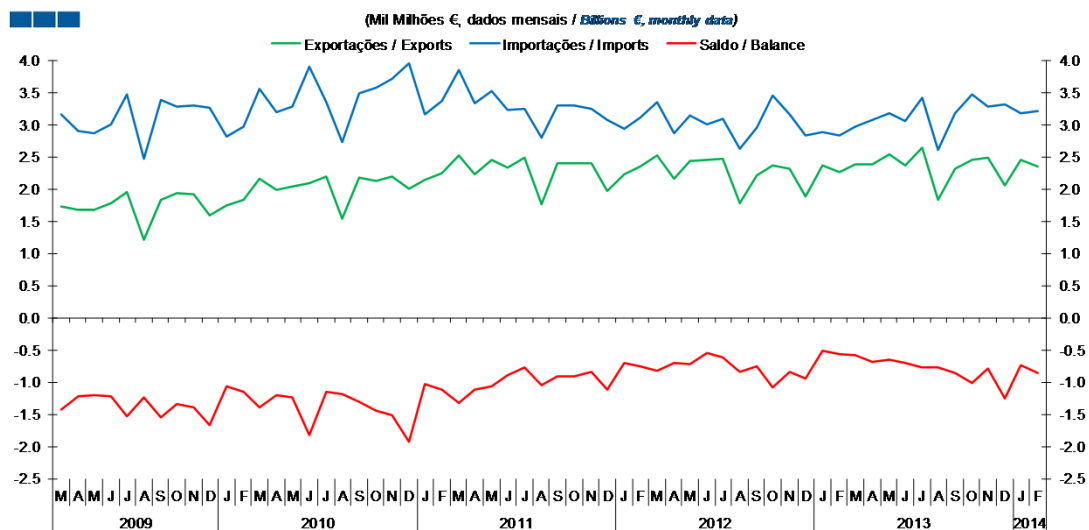
Gráfico / Graph 2.2.  
Taxa de Cobertura  
Coverage Rate



	2012				2013												2014							
	M	A	M	J	J	A	S	O	N	D	J	F	M	A	M	J	J	A	S	O	N	D	J	F
Espanha / Spain	56.8	56.7	57.0	59.4	60.4	58.5	57.3	54.5	55.4	53.4	57.0	59.0	63.6	63.4	64.9	64.8	63.8	61.1	59.6	58.3	59.3	56.6	58.9	59.2
Itália / Italy	57.4	55.0	55.1	56.6	55.9	56.6	54.2	53.3	53.2	57.1	63.6	65.9	63.0	57.5	57.0	52.4	52.4	50.0	51.4	49.2	49.6	46.6	49.5	49.4
França / France	151.1	149.7	153.3	150.8	154.6	145.4	142.5	134.5	143.1	132.7	139.5	138.2	151.9	148.2	148.7	143.5	145.1	142.2	142.7	135.8	138.0	135.9	139.9	133.2
Alemanha / Germany	89.5	89.3	89.0	91.8	92.9	89.5	87.5	83.5	85.4	81.2	84.3	87.0	89.5	89.5	87.6	88.8	90.0	88.8	86.9	86.6	87.3	77.1	72.9	71.3
Restantes ZE / Remaining EA	79.3	82.8	84.1	86.2	88.7	86.6	81.0	74.9	74.7	73.5	78.6	82.1	87.2	83.1	79.4	76.0	77.0	74.6	72.9	67.7	72.0	73.0	75.6	72.1
ZE 17 / EA 17	75.6	75.5	76.0	78.2	79.6	77.0	74.6	70.5	72.1	69.6	74.1	76.3	80.9	79.4	79.3	78.2	78.0	75.4	73.9	71.5	73.3	69.7	71.7	70.7

## 2. Zona Euro-17 / Euro Area-17

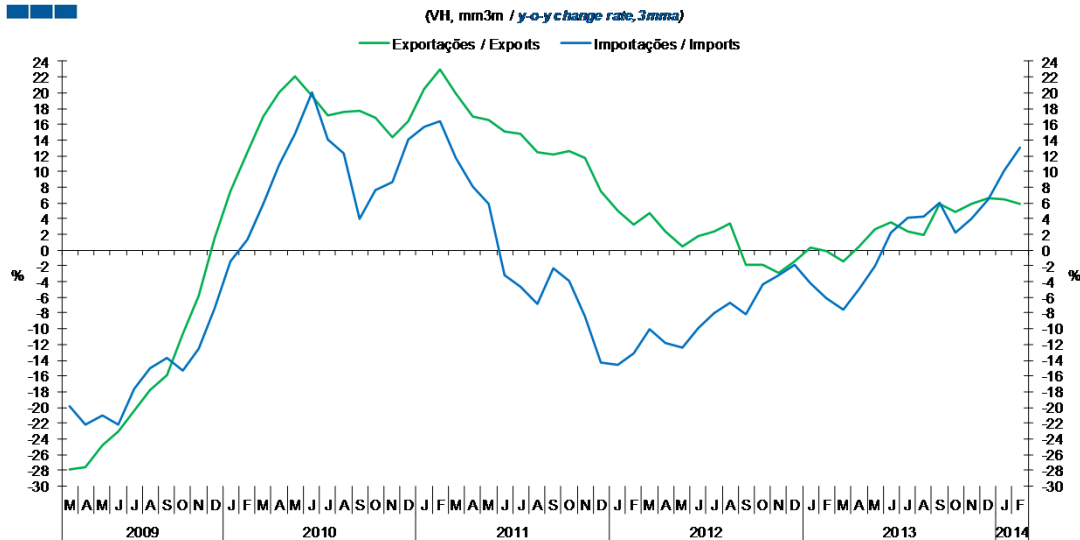
Gráfico / Graph 2.3.  
**Saldo**  
 Balance



	2012				2013												2014							
	M	A	M	J	J	A	S	O	N	D	J	F	M	A	M	J	J	A	S	O	N	D	J	F
Exportações / Exports	2.5	2.2	2.4	2.5	2.5	1.8	2.2	2.4	2.3	1.9	2.4	2.3	2.4	2.4	2.5	2.4	2.6	1.8	2.3	2.5	2.5	2.1	2.4	2.4
Importações / Imports	3.3	2.9	3.1	3.0	3.1	2.6	3.0	3.4	3.2	2.8	2.9	2.8	3.0	3.1	3.2	3.1	3.4	2.6	3.2	3.5	3.3	3.3	3.2	3.2
Saldo / Balance	-0.8	-0.7	-0.7	-0.6	-0.6	-0.8	-0.8	-1.1	-0.8	-1.0	-0.5	-0.6	-0.6	-0.7	-0.7	-0.7	-0.8	-0.8	-0.9	-1.0	-0.8	-1.3	-0.7	-0.8

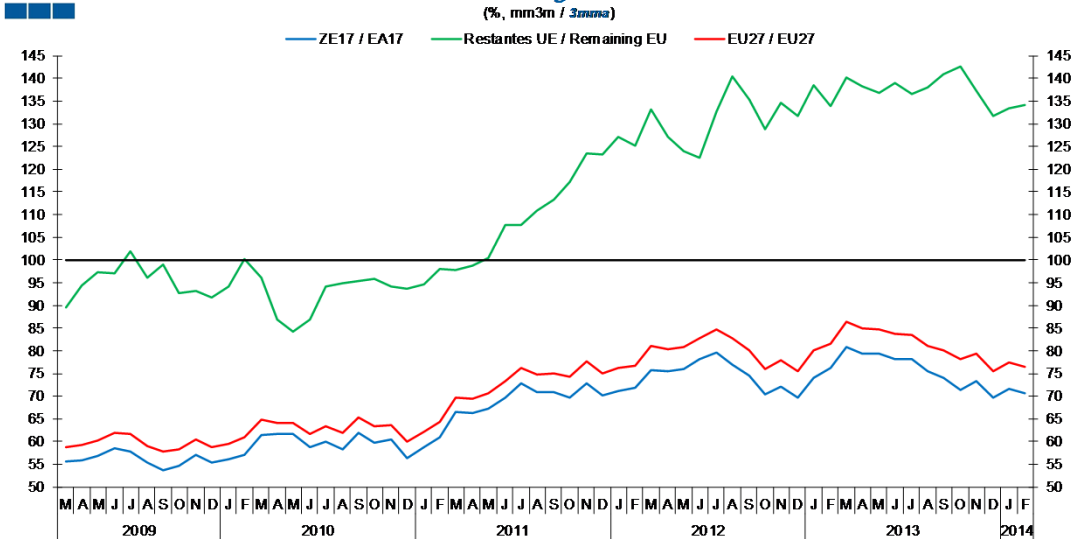
### 3. Intracomunitário / Intra-Community

Gráfico / Graph 3.1.  
 Importações e Exportações  
 Imports and Exports



	2012		2013		2014	
	M	A	M	J	M	J
Exportações / Exports	4.7	2.3	0.5	1.8	2.3	3.4
Importações / Imports	-10.1	-11.8	-12.4	-9.9	-8.0	-6.7

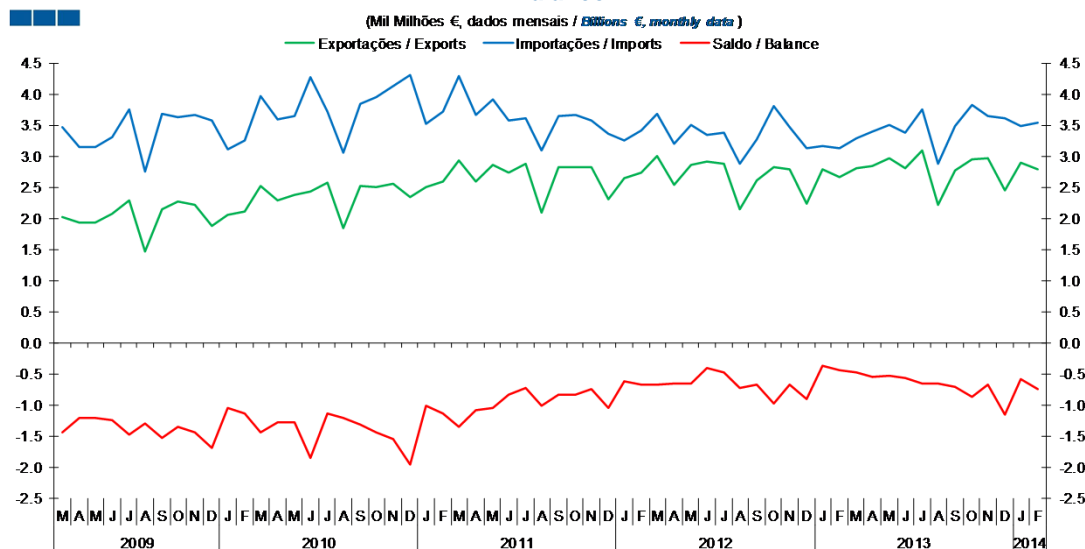
Gráfico / Graph 3.2.  
 Taxa de Cobertura  
 Coverage Rate



	2012		2013		2014	
	M	A	M	J	M	J
ZE 17 / EA 17	75.6	75.5	76	78.2	79.6	77
UE 27 / EU 27	81	80.5	80.8	82.8	84.7	82.9
Restantes UE / Remaining EU	133.2	127.1	123.9	122.5	132.8	140.4

### 3. Intracomunitário / Intra-Community

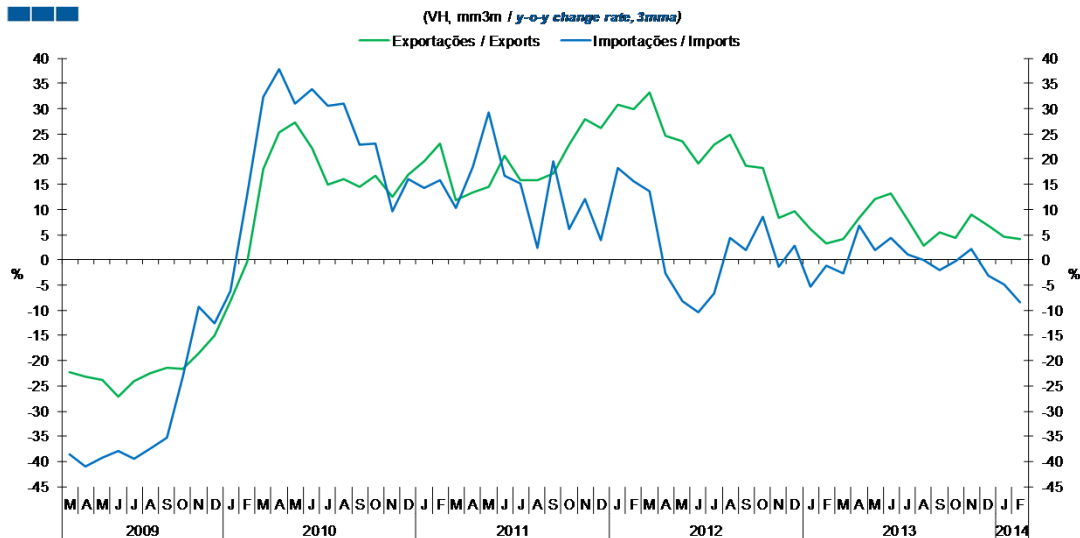
Gráfico / Graph 3.3.  
 Saldo  
 Balance



	2012												2013												2014	
	M	A	M	J	J	A	S	O	N	D	J	F	M	A	M	J	J	A	S	O	N	D	J	F		
Exportações / Exports	3.0	2.5	2.9	2.9	2.9	2.1	2.6	2.8	2.8	2.2	2.8	2.7	2.8	2.8	3.0	2.8	3.1	2.2	2.8	3.0	3.0	2.4	2.9	2.8		
Importações / Imports	3.7	3.2	3.5	3.3	3.4	2.9	3.3	3.8	3.5	3.1	3.2	3.1	3.3	3.4	3.5	3.4	3.7	2.9	3.5	3.8	3.7	3.6	3.5	3.5		
Saldo / Balance	-0.7	-0.7	-0.7	-0.4	-0.5	-0.7	-0.7	-1.0	-0.7	-0.9	-0.4	-0.5	-0.5	-0.6	-0.5	-0.6	-0.7	-0.7	-0.7	-0.9	-0.7	-1.2	-0.6	-0.8		

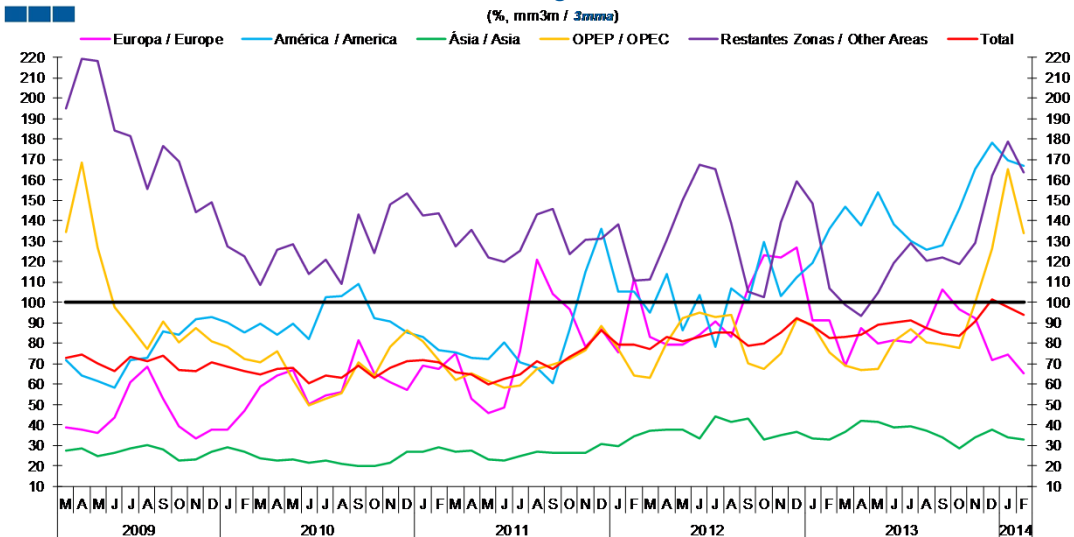
## 4. Extracomunitário / Extra-Community

Gráfico / Graph 4.1.  
Importações e Exportações  
Imports and Exports



	2012					2013					2014													
	M	A	M	J	J	A	S	O	N	D	J	F	M	A	M	J	J	A	S	O	N	D	J	F
Exportações / Exports	33.2	24.7	23.5	19.1	22.8	24.9	18.7	18.2	8.3	9.7	6.2	3.3	4.2	8.3	12.1	13.1	7.9	2.8	5.5	4.4	8.9	6.7	4.6	4.2
Importações / Imports	13.6	-2.6	-8.1	-10.3	-6.7	4.4	2.0	8.6	-1.3	2.8	-5.3	-1.2	-2.7	6.8	1.9	4.3	1.1	0.1	-1.9	-0.3	2.2	-3.1	-4.9	-8.4

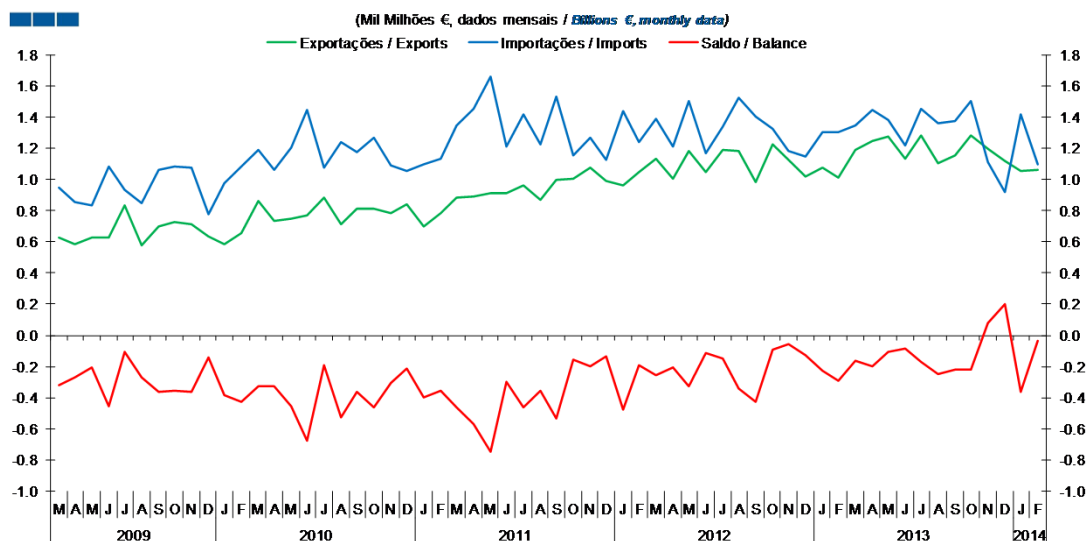
Gráfico / Graph 4.2.  
Taxa de Cobertura  
Coverage Rate



	2012					2013					2014													
	M	A	M	J	J	A	S	O	N	D	J	F	M	A	M	J	J	A	S	O	N	D	J	F
Europa / Europe	83.1	79.3	79.5	84.2	90.7	83.1	106.8	123.1	122.0	126.6	91.4	91.1	69.2	87.5	79.7	81.3	80.4	88.2	106.6	96.5	92.1	71.5	74.6	65.5
América / America	95.2	114.0	86.3	103.5	78.3	106.9	100.6	129.4	103.0	112.0	119.5	135.9	146.6	137.8	153.9	138.0	130.0	125.5	127.8	145.7	165.3	178.0	169.4	166.7
Ásia / Asia	37.4	38.0	38.0	33.5	44.0	41.5	43.4	33.1	35.2	36.5	33.4	33.1	36.9	42.0	41.3	38.6	39.3	37.0	33.7	28.7	34.2	37.7	33.8	33.1
OPEP / OPEC	63.1	80.3	92.3	94.9	92.9	94.1	70.1	67.7	74.7	91.9	89.1	75.3	69.0	67.0	67.6	81.2	86.8	80.3	79.4	77.6	99.8	126.4	165.4	133.7
Restantes Zonas / Other Areas	111.2	130.8	150.1	167.4	165.2	138.9	105.4	102.4	139.4	159.1	148.7	106.9	98.7	93.3	104.9	119.1	129.2	120.3	122.0	118.9	128.9	161.9	178.4	163.7
Total	77.4	83.0	80.8	83.3	85.3	85.1	78.7	79.8	85.3	92.3	88.7	82.8	82.9	84.2	88.9	90.4	91.1	87.4	84.7	83.6	90.9	101.7	97.6	94.1

## 4. Extracomunitário / Extra-Community

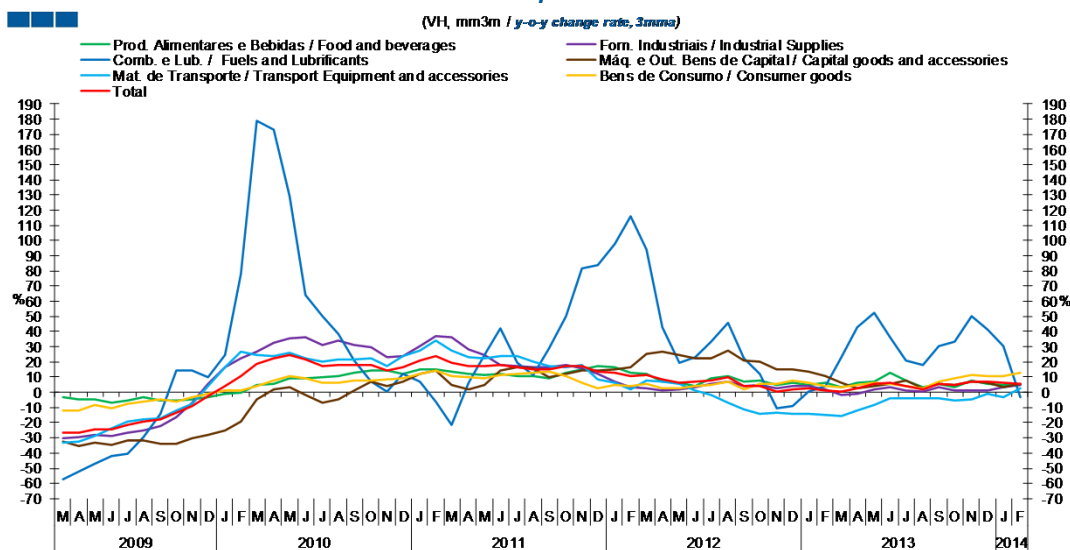
Gráfico / Graph 4.3.  
 Saldo  
 Balance



	2012		2013		2014	
	M	A	M	A	M	A
Exportações / Exports	1.1	1.0	1.2	1.0	1.2	1.0
Importações / Imports	1.4	1.2	1.5	1.2	1.3	1.5
Saldo / Balance	-0.3	-0.2	-0.3	-0.1	-0.1	-0.5

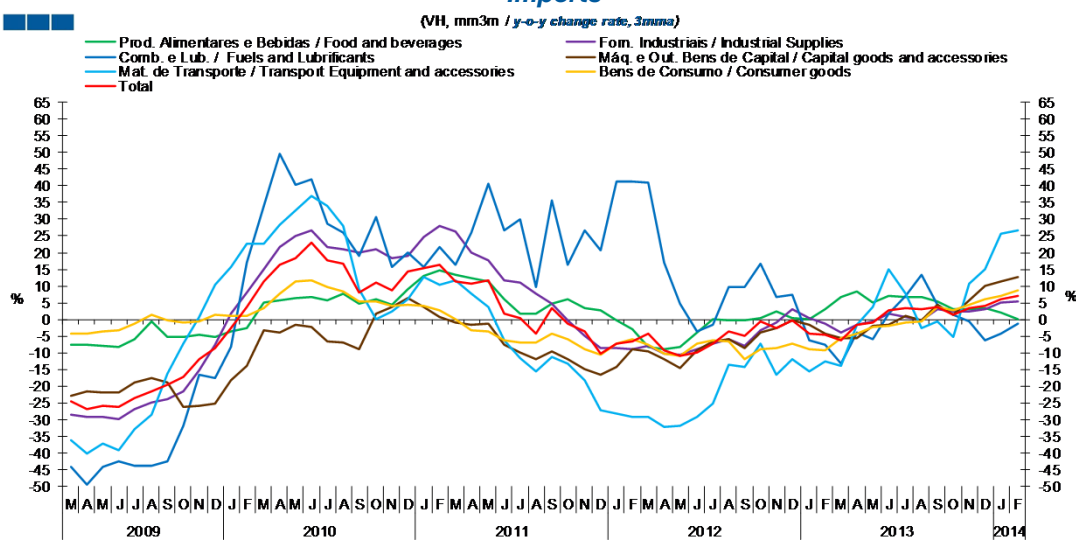
## 5. Grandes Categorias Económicas / Broad Economic Categories

Gráfico / Graph 5.1.  
Exportações  
Exports



	2012		2013		2014																			
	M	A	M	J	M	J																		
Produtos Alimentares e Bebidas / Food and Beverages	12.3	6.9	6.4	4.2	9.0	10.6	7.1	7.6	4.6	5.9	4.8	6.2	3.5	6.4	7.3	12.8	8.0	3.3	5.2	3.5	7.8	5.2	4.6	5.0
Comb. e Lub. / Fuels and Lubricants	94.0	42.7	19.3	23.2	33.2	45.6	22.4	12.2	-10.5	-8.8	0.8	4.3	23.0	42.6	52.1	36.3	20.7	18.2	30.2	33.5	50.2	41.0	30.2	-2.9
Mat. de Transporte / Transport equipment and accessories	7.8	6.8	5.2	0.9	-1.5	-7.1	-11.6	-14.3	-13.7	-14.4	-13.9	-14.9	-15.9	-12.3	-8.4	-3.7	-3.6	-4.0	-3.6	-5.7	-4.8	-0.7	-3.1	2.7
Forn. Industriais / Industrial Supplies	2.7	1.5	1.7	3.6	5.3	6.7	3.8	4.7	2.4	4.3	4.3	1.9	-1.4	-1.0	1.6	3.3	1.3	0.1	3.2	0.9	1.4	1.4	3.0	4.7
Máq. e Out. Bens de Capital / Capital Goods and Accessories	25.4	26.8	24.4	22.3	22.6	27.7	21.1	20.3	15.1	15.3	13.3	10.5	6.5	2.8	4.0	5.4	8.1	2.5	5.7	4.7	7.2	6.2	3.2	5.3
Bens de Consumo / Consumer Goods	5.8	2.5	2.8	4.1	4.5	6.7	1.6	5.6	5.3	8.0	6.3	4.1	3.2	5.1	6.6	5.4	3.9	2.3	7.0	9.0	11.1	10.8	10.7	12.9
<b>Total</b>	<b>11.7</b>	<b>8.2</b>	<b>6.6</b>	<b>6.6</b>	<b>7.9</b>	<b>9.6</b>	<b>4.2</b>	<b>4.1</b>	<b>0.6</b>	<b>2.2</b>	<b>2.3</b>	<b>1.0</b>	<b>0.1</b>	<b>2.6</b>	<b>5.3</b>	<b>6.2</b>	<b>4.0</b>	<b>2.2</b>	<b>5.8</b>	<b>4.8</b>	<b>6.7</b>	<b>6.7</b>	<b>5.9</b>	<b>5.4</b>

Gráfico / Graph 5.2.  
Importações  
Imports



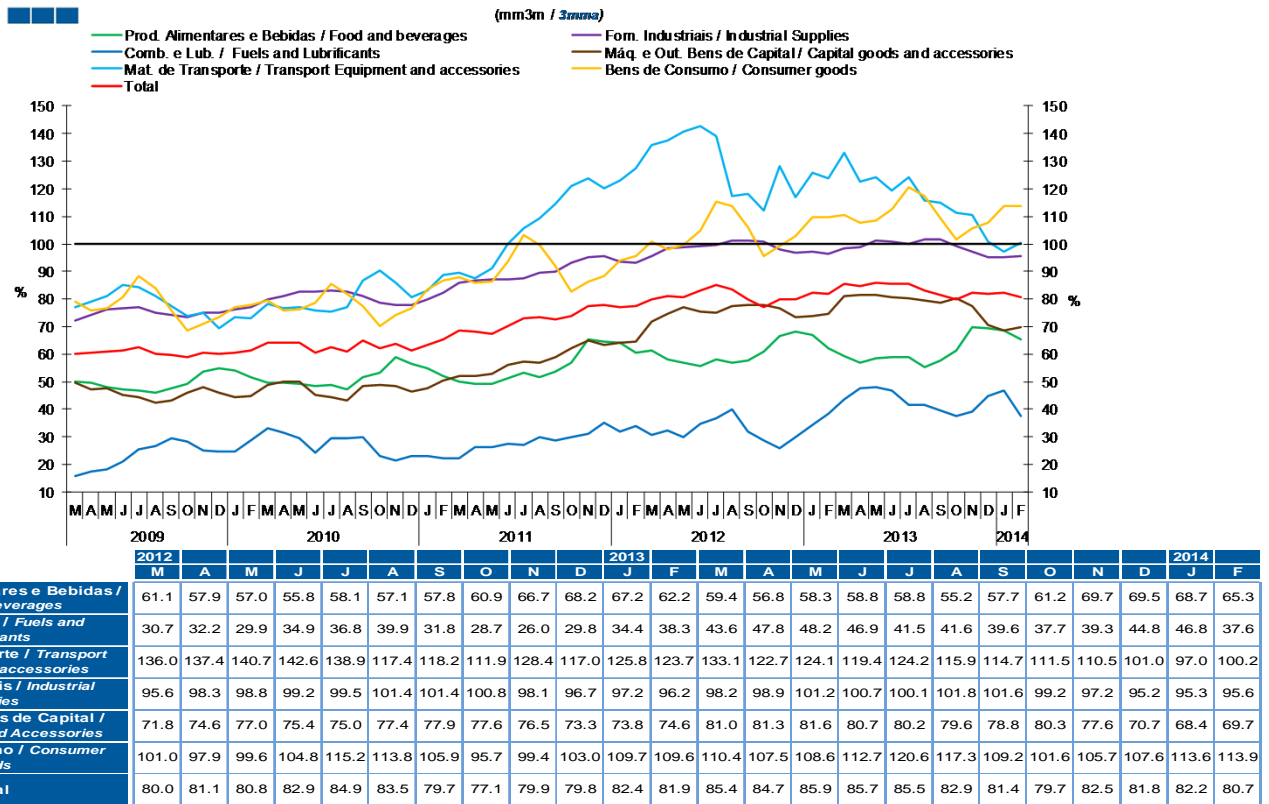
	2012		2013		2014																			
	M	A	M	J	M	J																		
Produtos Alimentares e Bebidas / Food and Beverages	-8.4	-9.0	-8.1	-4.1	0.0	-0.2	-0.3	0.6	2.3	0.4	0.2	3.1	6.6	8.5	4.9	7.0	6.7	6.8	5.4	2.9	3.0	3.4	2.2	0.1
Comb. e Lub. / Fuels and Lubricants	41.0	17.0	4.8	-3.5	-1.5	9.7	9.9	16.6	6.6	7.4	-6.3	-7.5	-13.3	-3.8	-5.8	1.6	7.0	13.2	4.4	1.6	-0.5	-6.2	-4.3	-1.2
Mat. de Transporte / Transport equipment and accessories	-29.0	-32.0	-31.9	-29.3	-25.1	-13.4	-14.3	-7.3	-16.7	-12.0	-15.7	-12.5	-14.0	-1.7	3.8	15.0	7.8	-2.7	-0.7	-5.3	10.6	15.1	25.6	26.7
Forn. Industriais / Industrial Supplies	-7.9	-10.4	-10.4	-8.9	-7.3	-5.9	-7.7	-3.3	-0.8	3.1	0.5	-1.1	-4.0	-1.6	-0.7	1.8	0.7	-0.3	3.0	2.5	2.3	3.0	5.1	5.4
Máq. e Out. Bens de Capital / Capital Goods and Accessories	-9.4	-11.8	-14.5	-9.3	-6.5	-6.0	-8.7	-3.8	-2.5	-0.3	-1.5	-4.1	-5.5	-5.6	-1.9	-1.6	1.0	-0.3	4.5	1.3	5.8	10.1	11.2	12.7
Bens de Consumo / Consumer Goods	-7.7	-10.1	-10.7	-7.2	-6.2	-6.6	-11.8	-8.8	-8.7	-7.4	-9.0	-9.1	-5.7	-4.3	-2.3	-2.0	-0.8	-0.8	3.8	2.6	4.4	6.0	6.9	8.6
<b>Total</b>	<b>-4.3</b>	<b>-9.2</b>	<b>-11.0</b>	<b>-9.8</b>	<b>-7.4</b>	<b>-3.5</b>	<b>-5.0</b>	<b>-0.5</b>	<b>-2.4</b>	<b>-0.4</b>	<b>-4.4</b>	<b>-4.7</b>	<b>-6.2</b>	<b>-1.7</b>	<b>-0.9</b>	<b>2.8</b>	<b>3.2</b>	<b>3.0</b>	<b>3.6</b>	<b>1.4</b>	<b>3.5</b>	<b>4.0</b>	<b>6.1</b>	<b>7.0</b>

Nota: Não inclui Bens N.E. Outra Categoria devido ao seu reduzido valor relativo e elevada variabilidade.

Note: Does not include Goods Not Elsewhere Specified because of its small relative value and high variability

## 5. Grandes Categorias Económicas / Broad Economic Categories

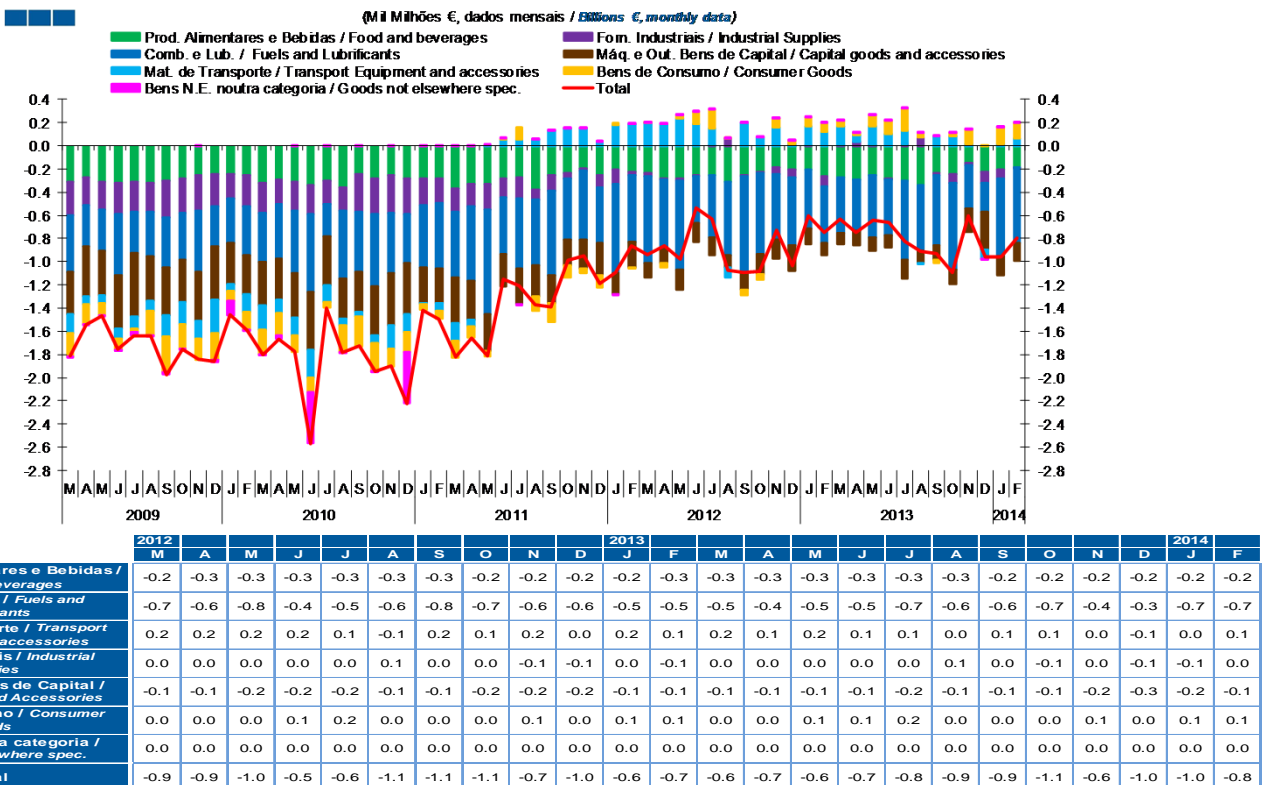
Gráfico / Graph 5.3.  
 Taxa de Cobertura  
 Coverage Rate



Nota: Não inclui Bens N.E. Outra Categoria devido ao seu reduzido valor relativo e elevada variabilidade.

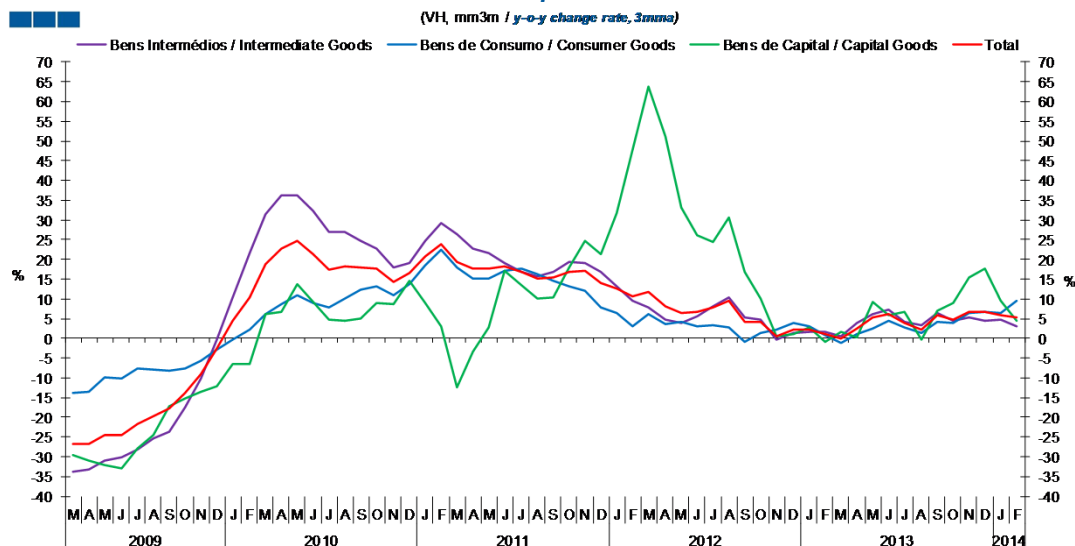
Note: Does not include Goods Not Elsewhere Specified because of its small relative value and high variability

Gráfico / Graph 5.4.  
 Saldo  
 Balance



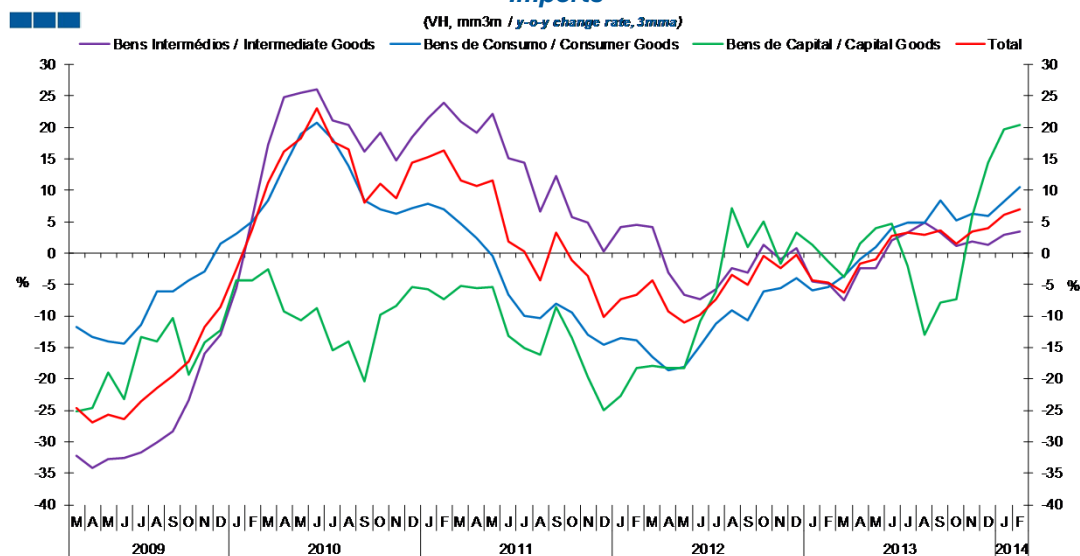
## 6. Classes Básicas de Bens do Sistema Europeu de Contas Nacionais / Basic Classes of Goods in the European System of Accounts

Gráfico / Graph 6.1.  
 Exportações  
 Exports



	2012												2013												2014																																															
	M	A	M	J	J	A	S	O	N	D	J	F	M	A	M	J	J	A	S	O	N	D	J	F	M	A	M	J	J	A	S	O	N	D	J	F																																				
Bens Intermediários / Intermediate Goods	7.9	4.7	3.9	5.5	8.0	10.5	5.4	4.6	-0.4	1.3	1.7	1.5	0.5	3.8	6.1	7.2	4.1	3.2	6.6	4.5	5.3	4.5	4.8	3.1	63.9	51.0	33.1	26.0	24.4	30.7	16.9	10.1	0.5	1.1	2.8	-0.8	1.5	0.4	9.3	5.8	6.6	-0.3	6.9	9.1	15.5	17.7	9.6	4.5	11.7	8.2	6.6	6.6	7.9	9.6	4.2	4.1	0.6	2.2	2.3	1.0	0.1	2.6	5.3	6.2	4.0	2.2	5.8	4.8	6.7	6.7	5.9	5.4
Bens de Consumo / Consumer Goods	6.2	3.7	4.1	3.1	3.3	2.8	-1.0	1.4	2.3	3.9	3.0	0.8	-1.2	1.1	2.4	4.6	2.8	1.4	4.1	3.9	6.4	6.8	6.5	9.6																																																
Bens de Capital / Capital Goods	63.9	51.0	33.1	26.0	24.4	30.7	16.9	10.1	0.5	1.1	2.8	-0.8	1.5	0.4	9.3	5.8	6.6	-0.3	6.9	9.1	15.5	17.7	9.6	4.5																																																
Total	11.7	8.2	6.6	6.6	7.9	9.6	4.2	4.1	0.6	2.2	2.3	1.0	0.1	2.6	5.3	6.2	4.0	2.2	5.8	4.8	6.7	6.7	5.9	5.4																																																

Gráfico / Graph 6.2.  
 Importações  
 Imports



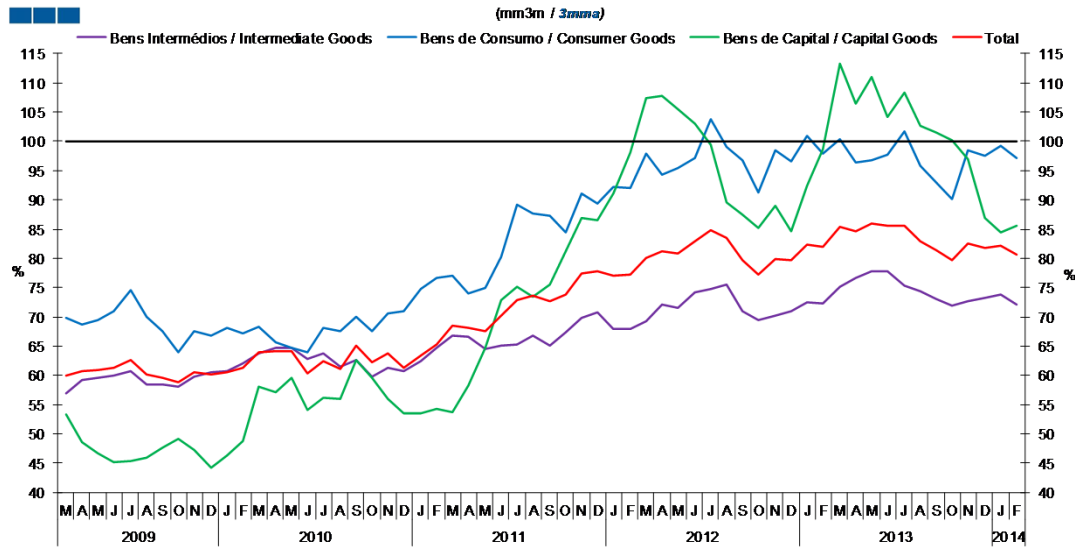
	2012												2013												2014																																															
	M	A	M	J	J	A	S	O	N	D	J	F	M	A	M	J	J	A	S	O	N	D	J	F	M	A	M	J	J	A	S	O	N	D	J	F																																				
Bens Intermediários / Intermediate Goods	4.2	-3.1	-6.6	-7.4	-5.8	-2.4	-3.2	1.4	-1.1	0.8	-4.6	-4.8	-7.5	-2.5	-2.4	2.1	3.3	4.8	3.3	1.1	1.8	1.3	2.8	3.4	-16.5	-18.7	-18.2	-14.8	-11.2	-9.1	-10.7	-6.1	-5.5	-3.9	-5.9	-5.5	-3.7	-1.0	1.0	4.1	4.9	4.8	8.4	5.2	6.3	6.0	8.3	10.5	-18.0	-18.3	-18.3	-10.9	-6.1	7.2	1.0	5.0	-1.7	3.3	1.3	-1.4	-3.8	1.6	3.9	4.7	-2.1	-13.0	-7.9	-7.2	5.9	14.5	19.7	20.4
Bens de Consumo / Consumer Goods	-16.5	-18.7	-18.2	-14.8	-11.2	-9.1	-10.7	-6.1	-5.5	-3.9	-5.9	-5.5	-3.7	-1.0	1.0	4.1	4.9	4.8	8.4	5.2	6.3	6.0	8.3	10.5																																																
Bens de Capital / Capital Goods	-18.0	-18.3	-18.3	-10.9	-6.1	7.2	1.0	5.0	-1.7	3.3	1.3	-1.4	-3.8	1.6	3.9	4.7	-2.1	-13.0	-7.9	-7.2	5.9	14.5	19.7	20.4																																																
Total	-4.3	-9.2	-11.0	-9.8	-7.4	-3.5	-5.0	-0.5	-2.4	-0.4	-4.4	-4.7	-6.2	-1.7	-0.9	2.8	3.2	3.0	3.6	1.4	3.5	4.0	6.1	7.0																																																

Nota: Não inclui a série Outros Bens devido ao seu baixo valor relativo e elevada variabilidade.

Note: Does not include Other Goods because of its small relative value and high variability.

## 6. Classes Básicas de Bens do Sistema Europeu de Contas Nacionais / Basic Classes of Goods in the European System of Accounts

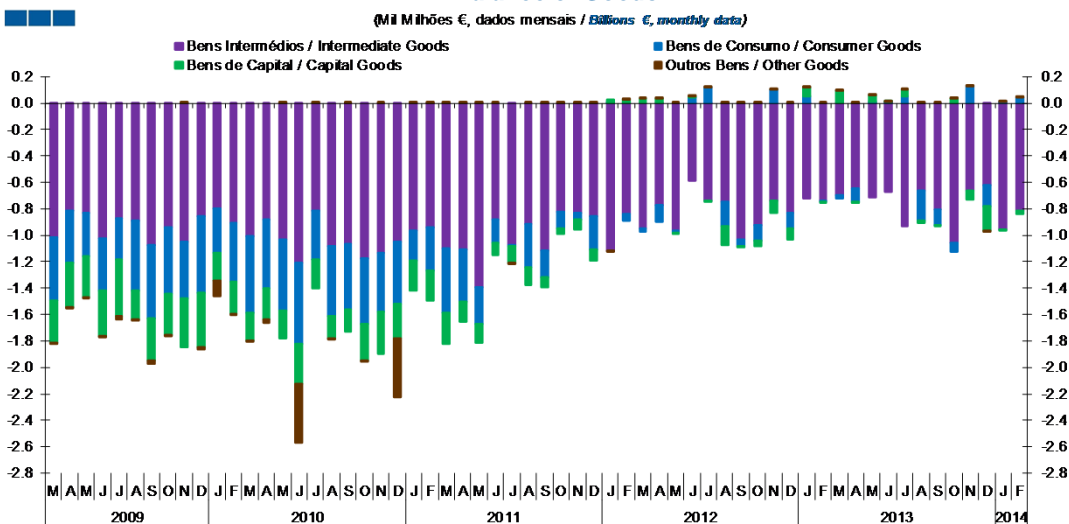
Gráfico / Graph 6.3.  
Taxa de Cobertura  
Coverage Rate



	2012												2013												2014											
	M	A	M	J	J	A	S	O	N	D	J	F	M	A	M	J	J	A	S	O	N	D	J	F	M	A	M	J	J	A	S	O	N	D	J	F
Bens Intermediários / Intermediate Goods	69.2	72.0	71.6	74.1	74.8	75.5	70.9	69.5	70.2	71.0	72.4	72.4	75.2	76.7	77.8	77.8	75.4	74.3	73.1	71.8	72.6	73.3	73.8	72.2												
Bens de Consumo / Consumer Goods	97.9	94.4	95.4	97.2	103.7	99.0	96.8	91.2	98.5	96.7	100.9	98.0	100.4	96.3	96.8	97.7	101.7	95.8	92.9	90.0	98.6	97.4	99.2	97.2												
Bens de Capital / Capital Goods	107.4	107.7	105.5	103.1	99.5	89.6	87.4	85.2	88.9	84.6	92.4	98.7	113.3	106.5	110.9	104.1	108.4	102.6	101.5	100.2	97.0	87.0	84.5	85.7												
Total	80.0	81.1	80.8	82.9	84.9	83.5	79.7	77.1	79.9	79.8	82.4	81.9	85.4	84.7	85.9	85.7	85.5	82.9	81.4	79.7	82.5	81.8	82.2	80.7												

Nota: Não inclui a série Outros Bens devido ao seu baixo valor relativo e elevada variabilidade.  
Note: Does not include Other Goods because of its small relative value and high variability.

Gráfico / Graph 6.4.  
Saldo de Bens  
Balance of Goods



	2012												2013												2014											
	M	A	M	J	J	A	S	O	N	D	J	F	M	A	M	J	J	A	S	O	N	D	J	F	M	A	M	J	J	A	S	O	N	D	J	F
Bens Intermediários / Intermediate Goods	-0.9	-0.8	-1.0	-0.6	-0.7	-0.7	-1.0	-0.9	-0.7	-0.8	-0.7	-0.7	-0.7	-0.6	-0.7	-0.7	-0.9	-0.7	-0.8	-1.1	-0.7	-0.6	-1.0	-0.8												
Bens de Consumo / Consumer Goods	0.0	-0.1	0.0	0.0	0.1	-0.2	0.0	-0.1	0.1	-0.1	0.1	0.0	0.0	-0.1	0.0	0.0	0.1	-0.2	-0.1	-0.1	0.1	-0.2	0.0	0.0												
Bens de Capital / Capital Goods	0.0	0.0	0.0	0.0	0.0	-0.1	0.0	0.0	-0.1	-0.1	0.1	0.0	0.1	0.0	0.1	0.0	0.0	0.0	0.0	0.0	-0.1	-0.2	0.0	0.0												
Outros Bens / Other Goods	0.0	0.0	0.0	0.0	0.0	0.0	0.0	0.0	0.0	0.0	0.0	0.0	0.0	0.0	0.0	0.0	0.0	0.0	0.0	0.0	0.0	0.0	0.0	0.0												
Total	-0.9	-0.9	-1.0	-0.5	-0.6	-1.1	-1.1	-1.1	-0.7	-1.0	-0.6	-0.7	-0.6	-0.7	-0.6	-0.7	-0.8	-0.9	-0.9	-1.1	-0.6	-1.0	-1.0	-0.8												

## 6. Classes Básicas de Bens do Sistema Europeu de Contas Nacionais / Basic Classes of Goods in the European System of Accounts

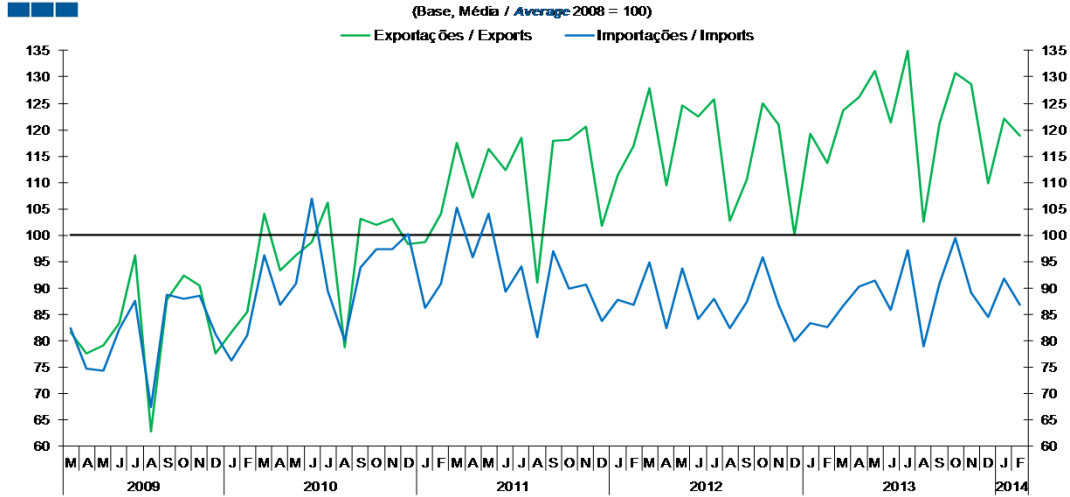
Tabela / Table 1.1.  
 Estrutura do Saldo  
 Balance Structure

Milhões de euros \ Millions of euros

		2013																		2014					
		M		A		M		J		J		A		S		O		N		D		J		F	
		M€	%	M€	%	M€	%	M€	%	M€	%	M€	%	M€	%	M€	%	M€	%	M€	%	M€	%	M€	%
<b>Bens Intermedios / Intermediate Goods</b>	Prod. alim. e bebidas / <i>Foods and beverages</i>	-163	26	-146	19	-104	16	-146	22	-154	19	-142	16	-140	15	-158	14	-140	23	-119	12	-104	11	-99	12
	Forn. industriais NE noutra categoria / <i>Industrial supplies NE specified</i>	9	-1	34	-5	6	-1	-12	2	11	-1	70	-8	-19	2	-81	7	-17	3	-99	10	-76	8	-2	0
	Comb. e lubrificantes / <i>Fuel and lubricants</i>	-581	92	-533	71	-603	94	-511	77	-742	90	-618	68	-651	70	-801	74	-457	76	-315	33	-741	78	-685	86
	Máquinas, outros bens de capital (Partes e acessórios) / <i>Capital goods and parts and accessories</i>	-32	5	-65	9	-66	10	-36	5	-66	8	-36	4	-50	5	-78	7	-64	11	-95	10	-78	8	-63	8
	Material de transportes (Partes e acessórios) / <i>Transport equipment (Parts and accessories)</i>	73	-12	66	-9	58	-9	33	-5	23	-3	65	-7	52	-6	64	-6	12	-2	10	-1	42	-4	37	-5
<b>Total</b>		-693	109	-644	86	-709	110	-672	102	-928	113	-662	73	-807	87	-1,053	97	-666	111	-618	64	-957	100	-811	102
<b>Bens de Consumo / Consumption Goods</b>	Prod. alim. e bebidas destinados ao consumo dos particulares / <i>Food and beverages mainly for household consumption</i>	-113	18	-142	19	-147	23	-133	20	-152	19	-195	21	-93	10	-82	8	-12	2	-104	11	-107	11	-86	11
	Material de transporte / <i>Transport equipment</i>	35	-6	21	-3	57	-9	22	-3	22	-3	-71	8	8	-1	-17	2	10	-2	-66	7	-31	3	-1	0
	Bens de consumo NE noutra categoria / <i>Consumption goods NE specified</i>	47	-7	21	-3	96	-15	117	-18	186	-23	36	-4	-31	3	29	-3	127	-21	8	-1	144	-15	133	-17
<b>Total</b>		-31	5	-100	13	6	-1	6	-1	56	-7	-230	25	-117	13	-70	6	125	-21	-163	17	6	-1	45	-6
<b>Bens de Capital / Capital Goods</b>	Carburantes para motor / <i>Motor spirit</i>	100	-16	87	-12	68	-11	36	-5	64	-8	48	-5	48	-5	55	-5	86	-14	63	-7	70	-7	28	-4
	Máquinas, outros bens de capital (exceto material de transporte) / <i>Capital goods (except transport equipment)</i>	-59	9	-63	8	-56	9	-75	11	-94	11	-70	8	-81	9	-52	5	-141	23	-227	24	-79	8	-87	11
	Material de transportes destinado à indústria / <i>Transport equipment, industrial</i>	49	-8	-31	4	46	-7	42	-6	77	-9	4	0	22	-2	30	-3	-9	2	-18	2	2	0	29	-4
<b>Total</b>		90	-14	-6	1	58	-9	3	0	48	-6	-18	2	-11	1	32	-3	-64	11	-181	19	-6	1	-30	4
<b>Outros / Others</b>		1	0	3	0	2	0	1	0	2	0	2	0	3	0	2	0	3	0	0	0	2	0	1	0
<b>Total</b>		-634	100	-747	100	-643	100	-662	100	-823	100	-908	100	-932	100	-1,090	100	-602	100	-962	100	-956	100	-794	100

## 7. Índice GEE de Comércio Internacional de Bens / *GEE Index of International Trade of Goods*

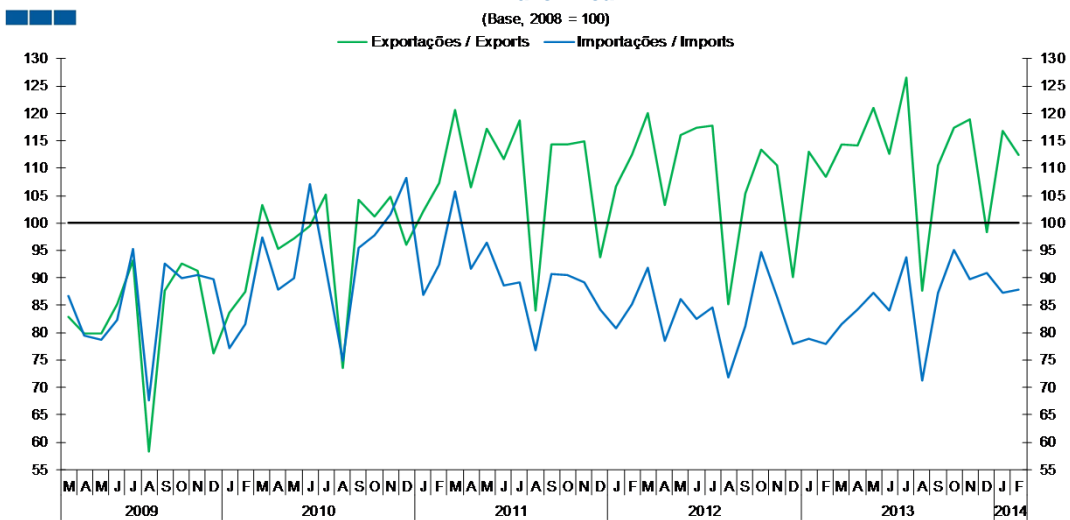
Gráfico / Graph 7.1.  
 Total



Fonte / Source: INE

	2012												2013												2014	
	M	A	M	J	J	A	S	O	N	D	J	F	M	A	M	J	J	A	S	O	N	D	J	F		
Exportações / Exports	127.8	109.4	124.6	122.6	125.7	102.8	110.6	125.1	121.0	100.1	119.3	113.6	123.6	126.2	131.1	121.4	135.1	102.5	121.2	130.9	128.6	109.9	122.2	118.9		
Importações / Imports	94.9	82.4	93.7	84.1	87.9	82.3	87.4	95.8	86.8	79.9	83.4	82.7	86.7	90.3	91.4	85.8	97.1	79.0	90.8	99.6	89.1	84.5	91.8	86.8		

Gráfico / Graph 7.2.  
 Zona Euro  
 Euro Area

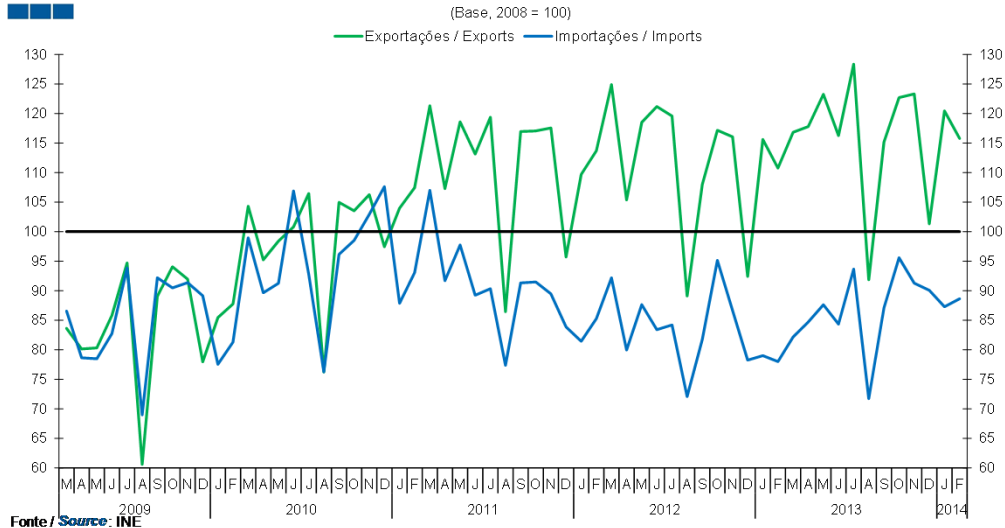


Fonte / Source: INE

	2012												2013												2014	
	M	A	M	J	J	A	S	O	N	D	J	F	M	A	M	J	J	A	S	O	N	D	J	F		
Exportações / Exports	120.2	103.3	116.0	117.4	117.9	85.2	105.4	113.4	110.6	90.0	113.1	108.5	114.3	114.2	121.0	112.6	126.6	87.6	110.6	117.5	119.0	98.4	116.9	112.4		
Importações / Imports	91.8	78.5	86.2	82.5	84.6	71.8	81.2	94.6	86.5	77.8	78.9	77.9	81.6	84.3	87.4	84.0	93.8	71.3	87.2	95.1	89.8	90.9	87.2	87.9		

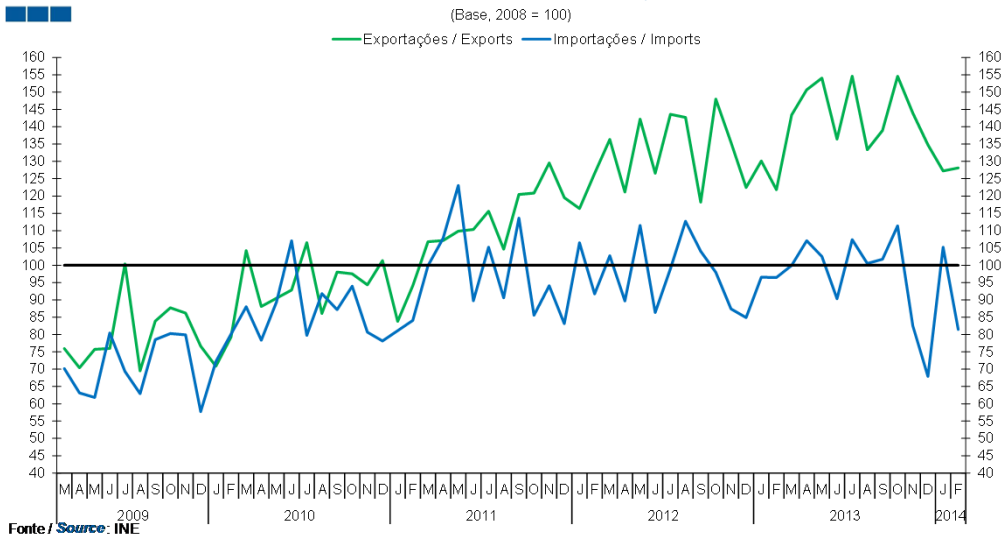
## 7. Índice GEE de Comércio Internacional de Bens / *GEE Index of International Trade of Goods*

**Gráfico / Graph 7.3.**  
**Intracomunitário**  
*Intra-Community*



	2012												2013												2014	
	M	A	M	J	J	A	S	O	N	D	J	F	M	A	M	J	J	A	S	O	N	D	J	F		
Exportações / Exports	124.9	105.4	118.5	121.2	119.6	89.1	108.0	117.2	116.0	92.4	115.6	110.8	116.8	117.8	123.3	116.3	128.3	91.9	115.2	122.7	123.3	101.3	120.4	115.8		
Importações / Imports	92.2	80.0	87.6	83.4	84.2	72.1	81.7	95.1	86.7	78.2	79.0	78.0	82.2	84.7	87.6	84.3	93.7	71.7	87.1	95.6	91.3	90.1	87.3	88.6		

**Gráfico / Graph 7.4.**  
**Extracomunitário**  
*Extra-Community*



	2012												2013												2014	
	M	A	M	J	J	A	S	O	N	D	J	F	M	A	M	J	J	A	S	O	N	D	J	F		
Exportações / Exports	136.3	121.2	142.2	126.6	143.6	142.7	118.2	148.0	135.5	122.5	130.1	121.8	143.4	150.7	154.1	136.5	154.6	133.4	138.9	154.6	144.0	134.8	127.3	128.1		
Importações / Imports	102.7	89.7	111.5	86.4	99.0	112.7	104.1	97.9	87.4	84.9	96.5	96.5	100.0	107.1	102.5	90.3	107.4	100.5	101.8	111.4	82.5	67.9	105.2	81.5		